

Postgraduate Certificate Animal Welfare during Transportation



Postgraduate Certificate Animal Welfare during Transportation

- » Modality: online
- » Duration: 12 weeks
- » Certificate: TECH Technological University
- » Dedication: 16h/week
- » Schedule: at your own pace
- » Exams: online

Website: www.techtute.com/pk/veterinary-medicine/postgraduate-certificate/animal-welfare-transportation

Index

01

Introduction

p. 4

02

Objectives

p. 8

03

Course Management

p. 12

04

Structure and Content

p. 16

05

Methodology

p. 20

06

Certificate

p. 28

01

Introduction

This intensive program addresses how animals should be handled during transportation by following behavioral guidelines to reduce stress responses in the animals and to increase efficiency in loading, transport and unloading.





“

A complete and total update on animal welfare with the most complete and effective online program on the market”

The Postgraduate Certificate in Animal Welfare during Transportation is a new and up-to-date program that arises from the growing demand among veterinary professionals for specialized knowledge in animal welfare to minimize animal suffering, since, nowadays, consumers demand not only healthier and safer food, but also food obtained through practices that ensure animal protection and welfare.

It addresses the concept of Animal Welfare, its evolution and applied ethology, one of the main welfare problems in all animal facilities.

It also covers animal ethics, or bioethics, as a differentiating element with respect to other similar specialization courses. Since this topic is usually included in philosophy programs, it is usually addressed very superficially in health sciences. This highly relevant ethical aspect today will be extensively discussed in depth throughout this Postgraduate Certificate in Animal Welfare during Transportation.

The program will help veterinary professionals acquire specialized and up-to-date knowledge in the field of animal welfare, which is increasingly in demand in society, as conflicts between animal advocates and food producers are the order of the day.

This **Postgraduate Certificate in Animal Welfare during Transportation** contains the most complete and up-to-date scientific program on the market. The most important features include:

- ◆ The latest technology in online teaching software
- ◆ A highly visual teaching system, supported by graphic and schematic contents that are easy to assimilate and understand
- ◆ Practical cases presented by practising experts
- ◆ State-of-the-art interactive video systems
- ◆ Teaching supported by telepractice
- ◆ Continuous updating and recycling systems
- ◆ Autonomous learning: full compatibility with other occupations
- ◆ Practical exercises for self-evaluation and learning verification
- ◆ Support groups and educational synergies: questions to the expert, debate and knowledge forums
- ◆ Communication with the teacher and individual reflection work
- ◆ Content that is available from any fixed or portable device with an Internet connection
- ◆ Supplementary documentation databases are permanently available, even after finishing the course



Join the elite, with this highly effective program and open new paths to help you advance in your professional progress"

“

With a methodological design based on proven teaching techniques, this innovative program will take you through different teaching approaches to allow you to learn in a dynamic and effective way”

Our teaching staff is made up of professionals from different fields related to this specialty. That way we are sure to offer the training update we intend to provide. A multidisciplinary team of professionals trained and experienced in different environments, who will impart the theoretical knowledge in an efficient way, but above all, who will bring the practical knowledge from their own experience to the course: one of the differential qualities of this refresher program.

The efficiency of the methodological design of this Postgraduate Certificate enhances the student's understanding of the subject. Developed by a multidisciplinary team of e-learning experts, it integrates the latest advances in educational technology. This way, you will be able to study with a range of comfortable and versatile multimedia tools that will give you the operability you need in.

The design of this program is based on Problem-Based Learning: an approach that conceives learning as a highly practical process. To achieve this remotely, we will use telepractice learning: with the help of an innovative interactive video system, and learning from an expert, you will be able to acquire the knowledge as if you were actually dealing with the scenario you are learning about. A concept that will allow you to integrate and fix learning in a more realistic and permanent way.

A complete program that will allow you to acquire the most advanced knowledge in all the areas of intervention of a specialized veterinarian.

Our innovative telepractice concept will give you the opportunity to learn through an immersive experience, which will provide you with a faster integration and a much more realistic view of the contents: learning from an expert.



02 Objectives

Our objective is to train highly qualified professionals for the working An objective that is complemented, moreover, in a global manner, by promoting human development that lays the foundations for a better society. This objective is materialized in helping professionals to reach a much higher level of competence and control. A goal that students will be able to achieve in just a few months, with a high-intensity and effective specialization program.





“

If you seek to broaden your skill set to include new paths of success and development, this is your Postgraduate Certificate: A renewal of knowledge that aspires to excellence”



General Objectives

- ♦ Analyze the concept of animal welfare
- ♦ Examine human involvement in animal welfare
- ♦ Establish animal welfare assessment systems
- ♦ Discuss proper handling guidelines for effective livestock transportation
- ♦ Examine the factors involved in livestock transportation
- ♦ Relate transportation to health and productivity

“*A path to achieve training and professional growth that will propel you towards a greater level of competitiveness in the employment market”*





Specific Objectives

- ♦ Examine the concept of animal welfare in all its implications
- ♦ Analyze the physiological stress response in animals and its quantification
- ♦ Develop the concepts of stress and acute and chronic stress responses
- ♦ Fundamentalize the concepts of "eustress" and "distress"
- ♦ Determine the animal welfare implications in this stress response
- ♦ Develop the concept of freedoms and needs to understand animal welfare
- ♦ Examine the concept of animal welfare assessment
- ♦ Specify current animal welfare assessment systems
- ♦ Examine the behavior of animals in relation to transportation
- ♦ Establish the environmental and management factors that affect welfare during transportation
- ♦ Identify the correct handling and transportation guidelines for cattle and swine
- ♦ Determine the correct handling and transportation guidelines for poultry
- ♦ Examine the correct handling and transportation guidelines for fish
- ♦ Assess differences in Animal Welfare as a function of means of transportation
- ♦ Present the relation between animal transportation and health and productivity

03

Course Management

Within the concept of total quality of our program, we are proud to put at your disposal a Teaching Staff of the highest level, chosen for their proven experience. Professionals from different areas and fields of expertise that make up a complete, multidisciplinary team. A unique opportunity to learn from the best.



“

*Our teaching team will help you
achieve professional success”*

Management



Dr. De la Fuente Vázquez, Jesús

- ♦ Doctor in Veterinary Medicine, Complutense University, Madrid, 2003
- ♦ Master's Degree in Pig Production Science, University of Aberdeen 1998
- ♦ Degree in Veterinary Medicine from the Complutense University, Madrid, 1997
- ♦ Assistant Professor in the Department of Animal Production, Faculty of Veterinary Medicine, UCM, since 2005
- ♦ Collaboration grant holder in teaching and research tasks, Department of Animal Production, Faculty of Veterinary Medicine, UCM, 1997
- ♦ European Social Fund predoctoral training fellow, Department of Agriculture, University of Aberdeen, 1998
- ♦ FPU predoctoral training grant, Complutense University, Madrid, 1999-2002
- ♦ Three-month stay in the Department of Animal Science, Texas A&M University, 2001
- ♦ Contract Researcher in the Department of Food Technology, National Institute of Agricultural and Food Research and Technology, INIA, 2004
- ♦ Participation as a collaborating professor in more than 40 national and international courses on Animal Welfare
- ♦ Participated in more of 35 research articles in journals indexed in the Journal Citation Report
- ♦ Participation in more than 14 publicly and privately funded research projects
- ♦ Participation in ten book chapters and complete books
- ♦ Contribution in more than 60 communications to national and international congresses

Professors

Dr. Díaz Díaz-Chirón, María Teresa

- ♦ Doctor in Veterinary Medicine, Complutense University, Madrid, 2002
- ♦ Degree in Veterinary Medicine, Complutense University, Madrid, 1997
- ♦ Assistant Professor in the Department of Animal Production, Faculty of Veterinary Medicine, UCM, 2019-2020

Dr. González de Chavarri Echaniz, Elisabeth

- ♦ Doctor in Veterinary Medicine, Complutense University, Madrid, 1991
- ♦ Degree in Veterinary Medicine, Complutense University, Madrid, 1987
- ♦ Assistant Professor in the Department of Animal Production, Faculty of Veterinary Medicine, UCM, since 2004

Dr. Pérez Marcos, Concepción

- ♦ Doctor in Veterinary Medicine, Complutense University, Madrid, 1986
- ♦ Degree in Veterinary Medicine, Complutense University of Madrid, 1979
- ♦ Assistant Professor in the Department of Animal Physiology, Faculty of Veterinary Medicine, UCM, since 1987

Dr. Arroyo Lambaer, Ana Alejandra

- ♦ Founder Yolcati, Animal Welfare Veterinary consultancy specializing in Ethology and Animal Welfare
- ♦ Degree in Veterinary Medicine and Zootechnics, National Autonomous University, Mexico
- ♦ Caregiving and Training Instructor at Oasis Wildlif



Leading professionals on the subject have come together to offer you the most comprehensive knowledge in the field so you can develop with total guarantees of success”

04

Structure and Content

The contents have been developed by different experts, with a clear purpose: to ensure that our students acquire each and every one of the skills necessary to become true experts in this field.

A complete and well-structured program that will take you to the highest standards of quality and success.





“

A comprehensive teaching program, structured in well-developed teaching units, oriented towards learning that is compatible with your personal and professional life"

Module 1. Animal Welfare. Concepts and Evolution

- 1.1. Evolution of the Concept of Animal Welfare, from Antiquity to Present Day
 - 1.1.1. Animal Welfare in Antiquity
 - 1.1.2. Introduction to the Concept of Welfare
 - 1.1.3. Animal Welfare Today
- 1.2. Vision of the Concept of Animal Welfare from Different Cultures
 - 1.2.1. Buddhism
 - 1.2.2. Catholicism
 - 1.2.3. Islam
 - 1.2.4. Judaism
 - 1.2.5. Orthodox Church
 - 1.2.6. Protestantism
- 1.3. Concept of Animal Welfare, Approaches to Understanding It
 - 1.3.1. Definitions of Animal Welfare
 - 1.3.2. Emotion-Based Approach
 - 1.3.3. Function-Based Approach
 - 1.3.4. Ethology-Based Approach
- 1.4. Physiological Responses to Stress
 - 1.4.1. Hypothalamus-Pituitary-Adrenal-Glands Axis
- 1.5. Acute and Chronic Stress Response
 - 1.5.1. Physiological Responses to Chronic Stress
 - 1.5.2. Physiological Responses to Acute Stress
- 1.6. Concepts of "Eustress" and "Distress"
 - 1.6.1. Eustress: Optimal Stress
 - 1.6.2. Distress: Negative Stress
- 1.7. The Role of Stress Response in Welfare
- 1.8. Freedoms and Needs
 - 1.8.1. Concept of Freedoms
 - 1.8.2. The Role of Freedoms in Animal Welfare
 - 1.8.3. Concept of Needs
- 1.9. Animal Welfare Assessment Systems
 - 1.9.1. Direct Indicators
 - 1.9.2. Indirect Indicators



- 1.10. Developing Animal Welfare Assessment Protocols
 - 1.10.1. TGI 35 L
 - 1.10.2. WelfareQuality ®
 - 1.10.3. AWIN (Animal Welfare Indicators)

Module 2. Animal Well-being during Transportation

- 2.1. Animal Behavior during Handling and Transportation
 - 2.1.1. Animal Handling
 - 2.1.2. Behavioral Features in Animals
 - 2.1.3. Fear Response and Interaction with the Environment
- 2.2. Animal Transportation by Road: Vehicles and Drivers
 - 2.2.1. Features of Road Transportation Vehicles
 - 2.2.2. Driver Aptitude in Animal Transportation
- 2.3. Environmental Factors involved in Welfare during Transportation
 - 2.3.1. Temperature
 - 2.3.2. Dampness
 - 2.3.3. Ventilation
- 2.4. Handling Factors Involved in Welfare during Transportation
 - 2.4.1. Loading and Unloading
 - 2.4.2. Social Mixing
 - 2.4.3. Fasting
- 2.5. Transportation and Handling in Swine and Beef Cattle
 - 2.5.1. Temperature in Swine Transportation
 - 2.5.2. Loading Density, Diet and Microclimate in Swine Transportation
 - 2.5.3. Cattle Behavior in Moving Vehicles
 - 2.5.4. Loading Density and Diet in Cattle Transportation
- 2.6. Poultry Transportation and Handling
 - 2.6.1. Loading and Unloading Poultry
 - 2.6.2. Heat Stress: Energy Balance, Hunger, Thirst and Fatigue
 - 2.6.3. Behavioral Responses: Fear, Aversion
- 2.7. Fish Transportation and Handling
 - 2.7.1. Transportation Systems
 - 2.7.2. The Impact of Transportation on Fish Welfare
 - 2.7.3. Minimizing the Impact of Transportation on Welfare
- 2.8. Transportation and Handling in Other Species
 - 2.8.1. Horse Transportation
 - 2.8.2. Sheep Transportation
 - 2.8.3. Rabbit Transportation
 - 2.8.4. Dog Transportation
 - 2.8.5. Wildlife Transportation
- 2.9. Animal Welfare in Rail, Air and Ship Transportation
 - 2.9.1. Animal Transportation by Rail
 - 2.9.2. Animal Transportation by Aircraft
 - 2.9.3. Animal Transportation by Ship
- 2.10. Impact of Transportation on Animals: Health and Productivity
 - 2.10.1. Consequences of Transportation and Handling on Health
 - 2.10.2. Consequences of Transportation and Handling on Carcass and Meat Quality



This program will allow you to advance in your career comfortably"

05

Methodology

This academic program offers students a different way of learning. Our methodology uses a cyclical learning approach: **Relearning.**

This teaching system is used, for example, in the most prestigious medical schools in the world, and major publications such as the **New England Journal of Medicine** have considered it to be one of the most effective.





“

Discover Relearning, a system that abandons conventional linear learning, to take you through cyclical teaching systems: a way of learning that has proven to be extremely effective, especially in subjects that require memorization"

At TECH we use the Case Method

What should a professional do in a given situation? Throughout the program you will be presented with multiple simulated clinical cases based on real patients, where you will have to investigate, establish hypotheses and, finally, resolve the situation. There is an abundance of scientific evidence on the effectiveness of the method. Specialists learn better, faster, and more sustainably over time.

With TECH you will experience a way of learning that is shaking the foundations of traditional universities around the world.



According to Dr. Gervas, the clinical case is the annotated presentation of a patient, or group of patients, which becomes a "case", an example or model that illustrates some peculiar clinical component, either because of its teaching power or because of its uniqueness or rarity. It is essential that the case is based on current professional life, in an attempt to recreate the actual conditions in a veterinarian's professional practice.

“

Did you know that this method was developed in 1912, at Harvard, for law students? The case method consisted of presenting students with real-life, complex situations for them to make decisions and justify their decisions on how to solve them. In 1924, Harvard adopted it as a standard teaching method”

The effectiveness of the method is justified by four fundamental achievements:

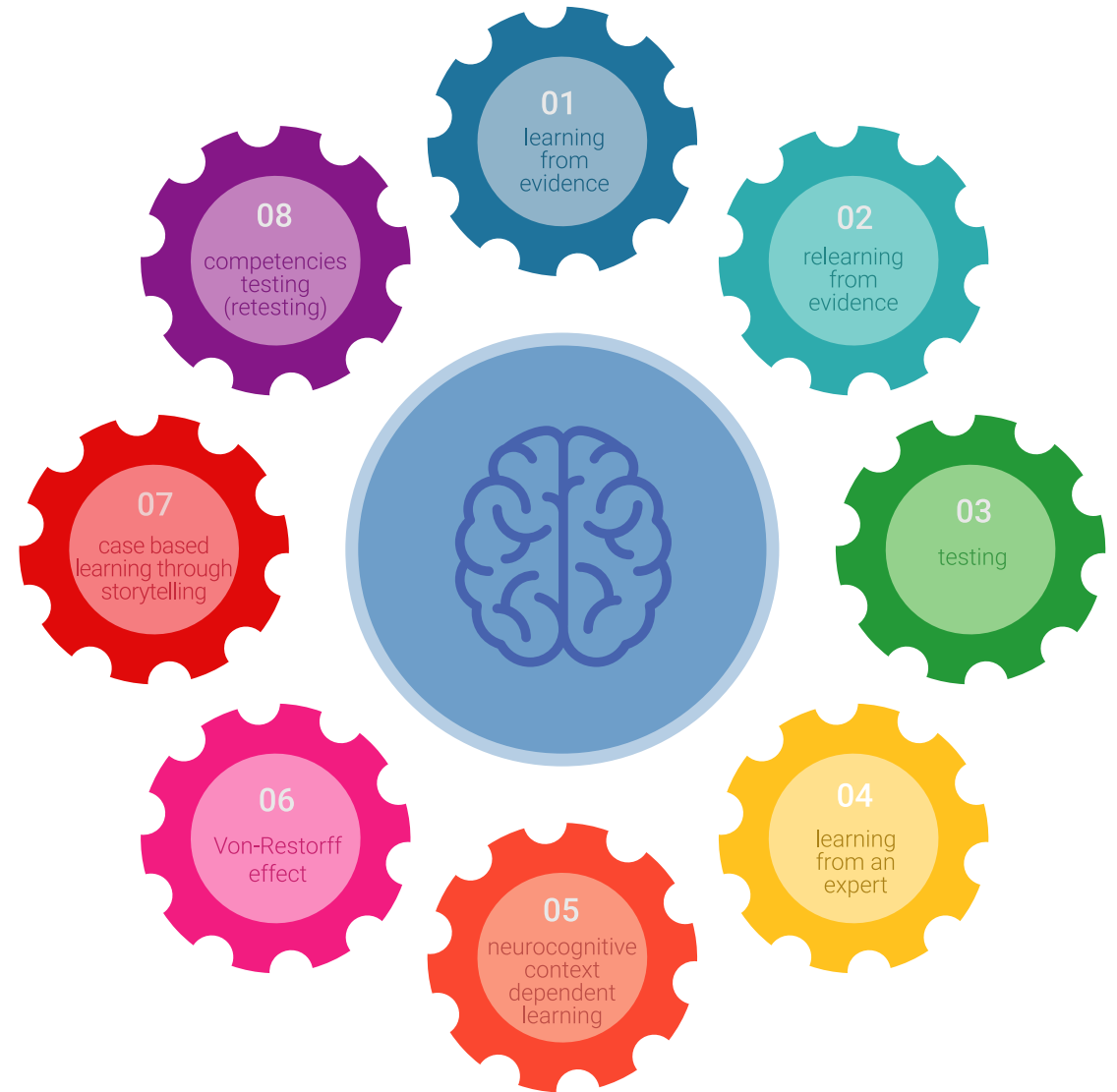
1. Veterinarians who follow this method not only manage to assimilate concepts, but also develop their mental capacity through exercises to evaluate real situations and knowledge application
2. Learning is solidly translated into practical skills that allow the student to better integrate into the real world.
3. Ideas and concepts are understood more efficiently, given that the example situations are based on real-life.
4. The feeling that the effort invested is effective becomes a very important motivation for veterinarians, which translates into a greater interest in learning and an increase in the time dedicated to working on the course.



Relearning Methodology

At TECH we enhance the case method with the best 100% online teaching methodology available: Relearning.

This university is the first in the world to combine the study of clinical cases with a 100% online learning system based on repetition, combining a minimum of 8 different elements in each lesson, a real revolution with respect to the mere study and analysis of cases.



Veterinarians will learn through real cases and by resolving complex situations in simulated learning environments. These simulations are developed using state-of-the-art software to facilitate immersive learning.

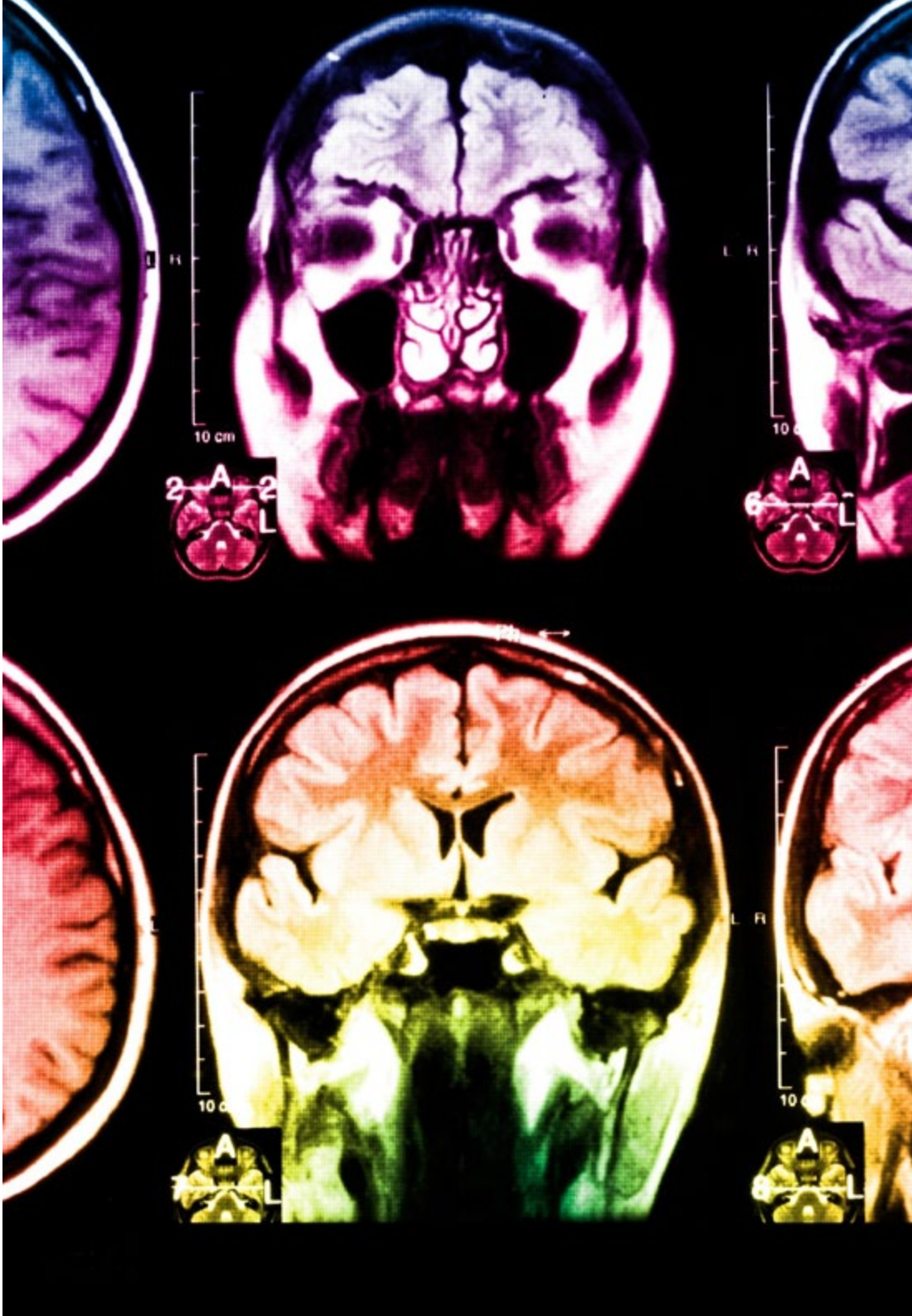
At the forefront of world teaching, the Relearning method has managed to improve the overall satisfaction levels of professionals who complete their studies, with respect to the quality indicators of the best online university (Columbia University).

With this methodology more than 65,000 veterinarians have been trained with unprecedented success in all clinical specialties, regardless of the surgical load. Our teaching method is developed in a highly demanding environment, where the students have a high socio-economic profile and an average age of 43.5 years.

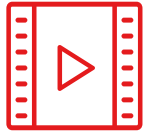
Relearning will allow you to learn with less effort and better performance, involving you more in your training, developing a critical mindset, defending arguments, and contrasting opinions: a direct equation for success.

In our program, learning is not a linear process, but rather a spiral (learn, unlearn, forget, and re-learn). Therefore, we combine each of these elements concentrically.

The overall score obtained by TECH's learning system is 8.01, according to the highest international standards.



This program offers the best educational material, prepared with professionals in mind:



Study Material

All teaching material is produced by the specialists who teach the course, specifically for the course, so that the teaching content is highly specific and precise.

These contents are then applied to the audiovisual format, to create the TECH online working method. All this, with the latest techniques that offer high quality pieces in each and every one of the materials that are made available to the student.



Latest Techniques and Procedures on Video

TECH introduces students to the latest techniques, the latest educational advances and to the forefront of current and procedures of veterinary techniques. All of this in direct contact with students and explained in detail so as to aid their assimilation and understanding. And best of all, you can watch the videos as many times as you like.



Interactive Summaries

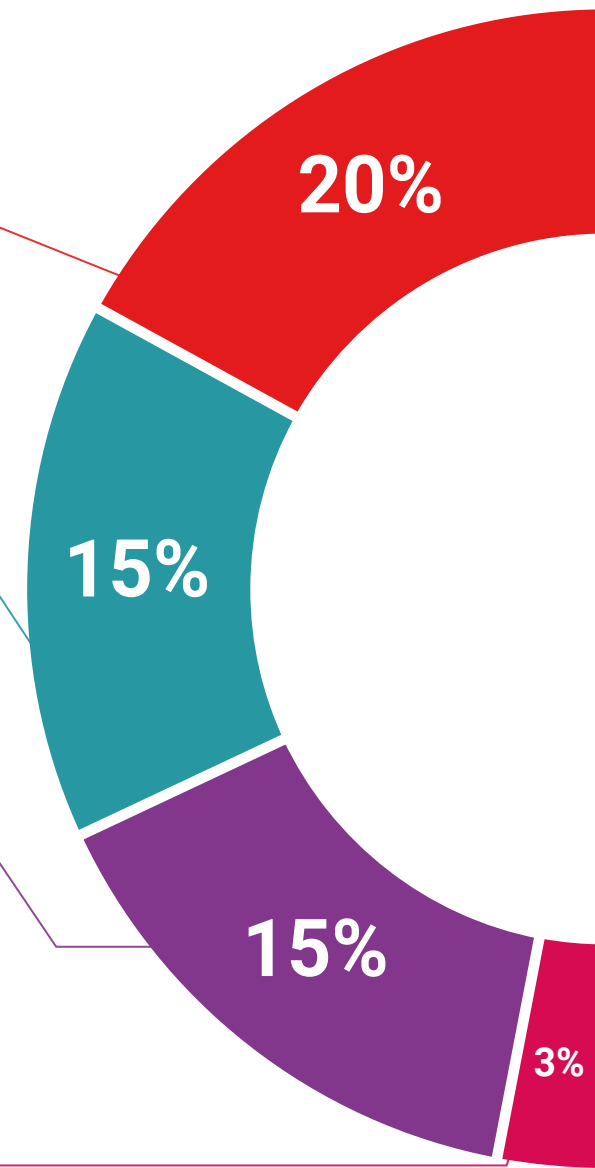
The TECH team presents the contents attractively and dynamically in multimedia lessons that include audio, videos, images, diagrams, and concept maps in order to reinforce knowledge.

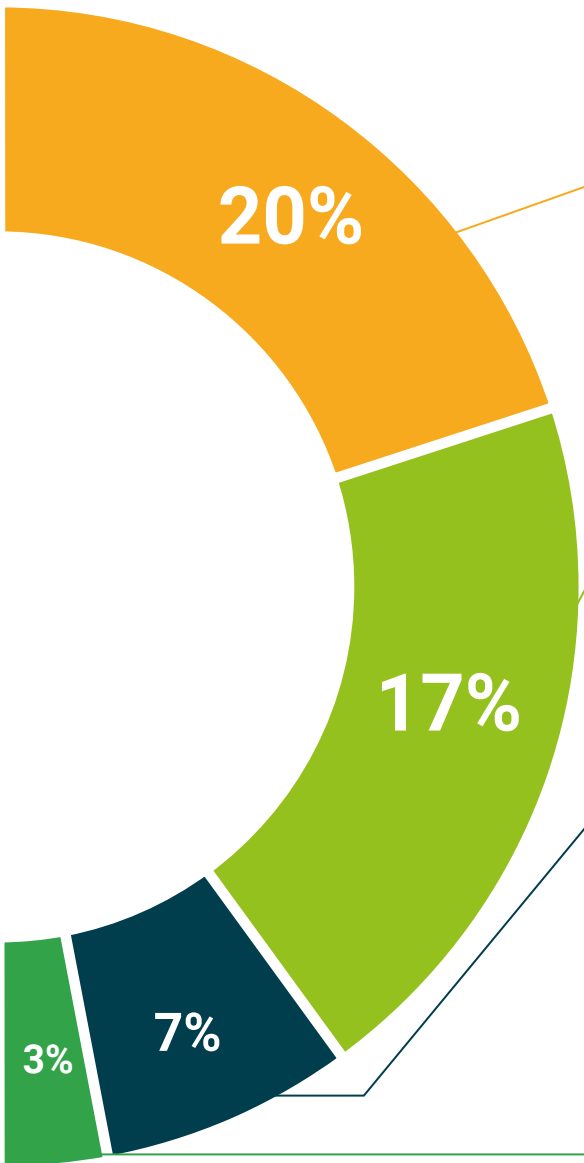
This exclusive educational system for presenting multimedia content was awarded by Microsoft as a "European Success Story".



Additional Reading

Recent articles, consensus documents and international guidelines, among others. In TECH's virtual library, students will have access to everything they need to complete their course.





Expert-Led Case Studies and Case Analysis

Effective learning ought to be contextual. Therefore, TECH presents real cases in which the expert will guide students, focusing on and solving the different situations: a clear and direct way to achieve the highest degree of understanding.



Testing & Retesting

We periodically evaluate and re-evaluate students' knowledge throughout the program, through assessment and self-assessment activities and exercises, so that they can see how they are achieving their goals.



Classes

There is scientific evidence suggesting that observing third-party experts can be useful.

Learning from an Expert strengthens knowledge and memory, and generates confidence in future difficult decisions.



Quick Action Guides

TECH offers the most relevant contents of the course in the form of worksheets or quick action guides. A synthetic, practical, and effective way to help students progress in their learning.



06

Certificate

The Postgraduate Certificate in Animal Welfare during Transportation guarantees students, in addition to the most rigorous and up-to-date education, access to a Postgraduate Certificate issued by TECH Technological University.



“

*Successfully complete this program
and receive your university qualification
without having to travel or fill out
laborious paperwork”*

This **Postgraduate Certificate in Animal Welfare during Transportation** contains the most complete and up-to-date scientific program on the market.

After the student has passed the assessments, they will receive their corresponding **Postgraduate Certificate** issued by **TECH Technological University** via tracked delivery*.

The certificate issued by **TECH Technological University** will reflect the qualification obtained in the Postgraduate Certificate, and meets the requirements commonly demanded by labor exchanges, competitive examinations and professional career evaluation committees.

Title: **Postgraduate Certificate in Animal Welfare during Transportation**

Official Number of Hours: **300 h.**



*Apostille Convention. In the event that the student wishes to have their paper certificate issued with an apostille, TECH EDUCATION will make the necessary arrangements to obtain it, at an additional cost.

future
health confidence people
education information tutors
guarantee accreditation teaching
institutions technology learning
community commitment
personalized service innovation
knowledge present
online training
development languages
classroom



Postgraduate Certificate Animal Welfare during Transportation

- » Modality: online
- » Duration: 12 weeks
- » Certificate: TECH Technological University
- » Dedication: 16h/week
- » Schedule: at your own pace
- » Exams: online

Postgraduate Certificate

Animal Welfare during Transportation

