

# CEFR B2 Portuguese Exam



“

*We prepare you for a global society, characterized by the unstoppable expansion of new markets; extraordinary cultural, social and linguistic diversity, innovation and technology as generators of opportunities; immediacy and proximity, collaboration and constant change. We prepare you to join this new reality, by helping you achieve linguistic mastery"*

**tech** global  
university



**CEFR**  
**B2 Portuguese**  
**Exam**

Website: [www.techtitute.com/us/school-of-languages/language-certification-exam/language-certification-exam-cefr-b2-portuguese](http://www.techtitute.com/us/school-of-languages/language-certification-exam/language-certification-exam-cefr-b2-portuguese)

# Index

01

Welcome

---

*p. 4*

02

Why Is it Important to Obtain  
B2 Certification?

---

*p. 8*

03

Methodology and Criteria for  
Exam Evaluation

---

*p. 12*

04

Who Can Take the Exam?

---

*p. 26*

05

Assessment  
and Certification

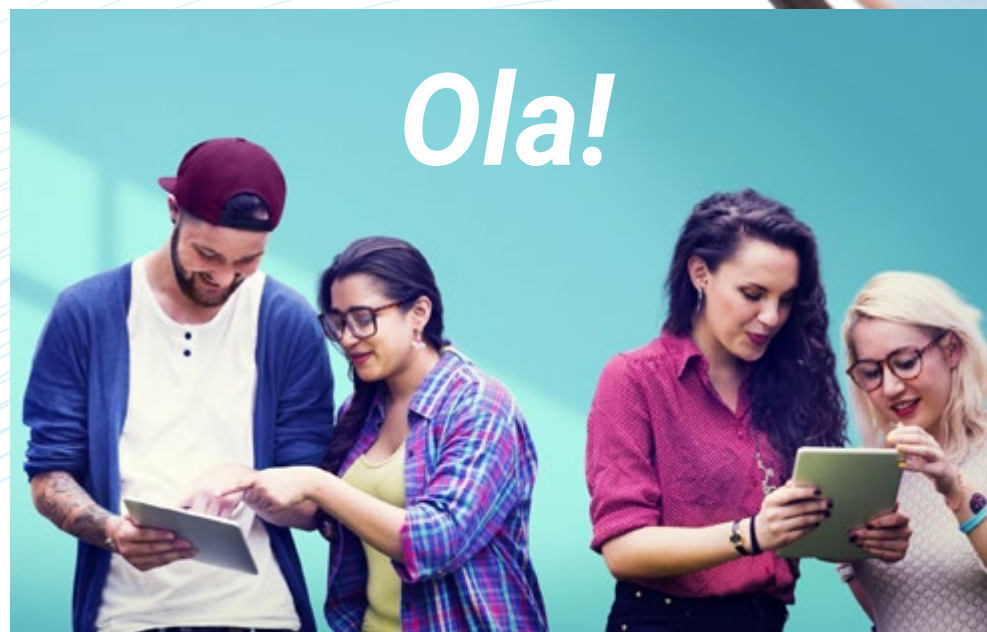
---

*p. 30*



# 01 Welcome

Portuguese is an essential language in the contemporary world. It is spoken by almost 300 million inhabitants and is the main language of countries such as Brazil. Therefore, having the opportunity to certify your Level B2 Portuguese according to the Common European Framework of Reference for Languages can bring great personal, academic and professional progress to those who achieve it. This exam provides this opportunity, since whoever passes it will obtain a CEFR Portuguese Level B2 qualification.





“

*This exam gives students the opportunity to certify their Portuguese Level B2 with the only reference that is valid and recognized worldwide: the CEFR"*

## Introduction

Having the accreditation of Portuguese Level B2 is essential in today's world. Countries such as Brazil are economically and culturally leading the way and it is a region with enormous opportunities of all kinds. Therefore, this upper intermediate level will be a great boost for those who have been certified.

*TECH has thoroughly prepared the language exam course in an individualized way and with all the guarantees, according to the CEFR guidelines*

*We perform the exam with all the guarantees, according to the CEFR guidelines and on an individualized basis*





“

*It is proven that learning languages increases your intelligence. Learning a foreign language strengthens the brain's neural networks”*

**José Antonio Marina.**  
*Philosopher, writer, and teacher.*



### Flexible and Tailored

Take your exam in person at any of our accredited locations or online from wherever you want.



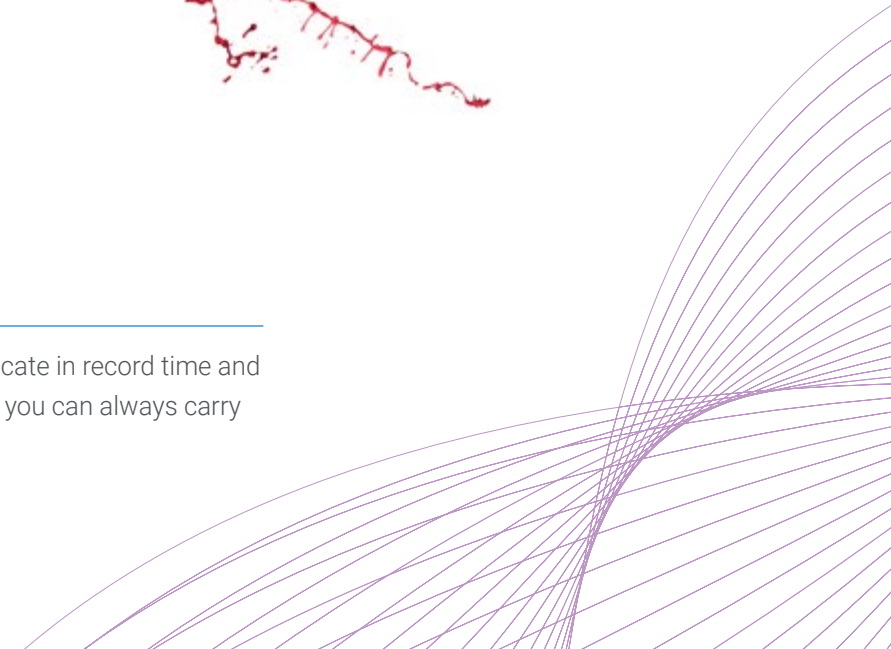
### No Stress

Are you nervous about waiting in long lines to register for the exam and take the different tests? At TECH you can register online and take your test with a tutor just for you.



### No Waiting

Receive your certificate in record time and in digital format so you can always carry it with you.



02

# Why Is it Important to Obtain B2 Certificate?

TECH presents this university exam, endorsed by the Common European Framework of Reference for Languages, a system of international prestige, to help students obtain their Portuguese certification at Level B2. In this way, you will be able to access better job opportunities in Brazil, a country that has become a worldwide reference for its economic and cultural progress.

Broaden your professional, academic and cultural horizons by getting certified with this TECH university exam.







“

*The fact that, in the last year, around 4 million candidates, in more than 130 countries, took the tests leading to certification at this level is a clear sign of its importance”*

## tech 10 | Why Is it Important to Obtain B2 Certificate?

### TECH Global University

The Common European Framework of Reference for Languages is the only recognized and accredited system for assessing a student's level of proficiency. Although there are other certification systems, these come from private institutions and are, therefore, not valid. The CEFR establishes a single criterion to determine the difficulty of the courses and awards certificates that are recognized throughout the European Union.

At TECH we offer you the test to obtain your level certificate based 100% on the CEFR, the only system recognized and accepted throughout Europe.

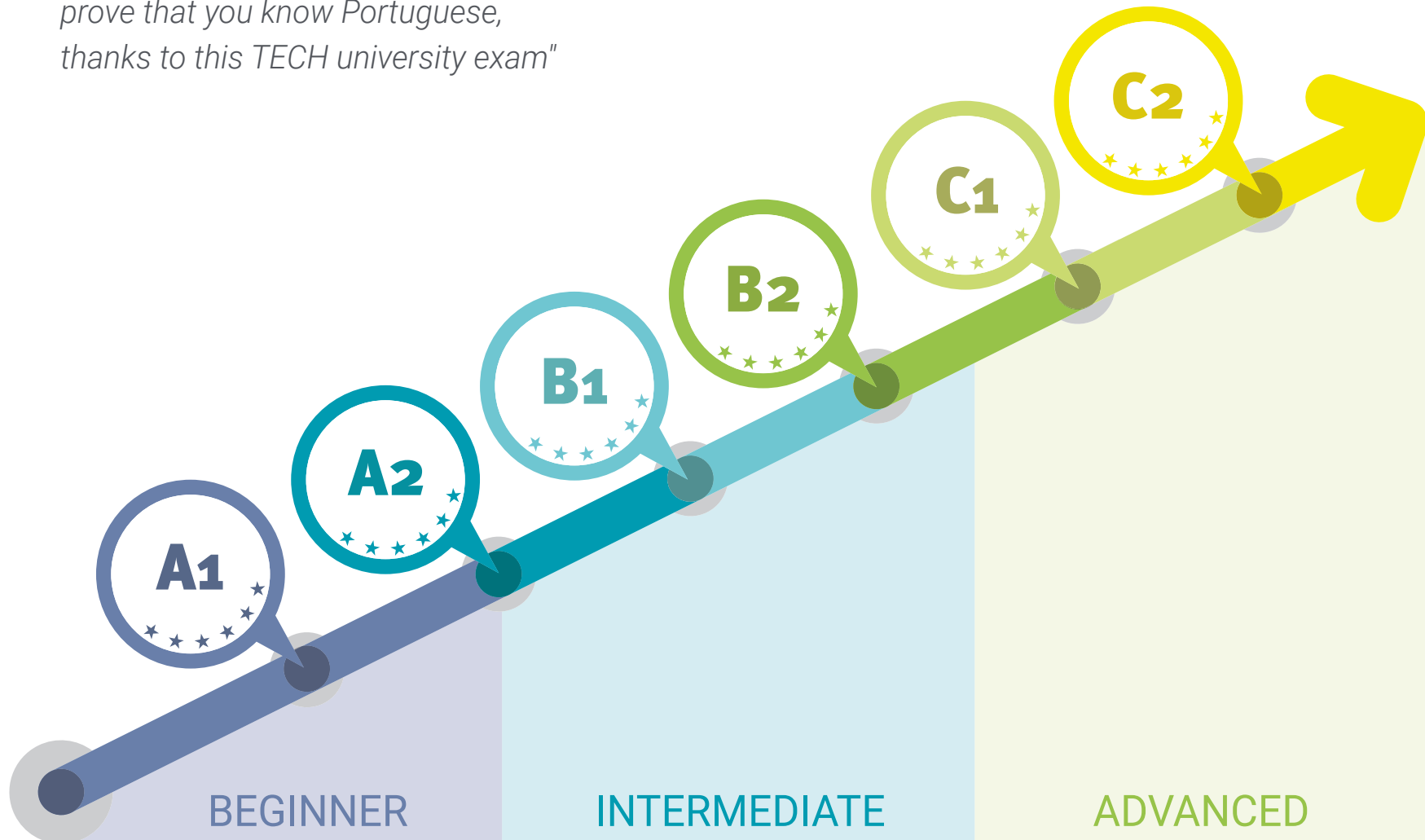
*Travel to new cities in Brazil and become fluent in Portuguese, thanks to this B2 language certification*

*By having the endorsement and recognition of the Common European Framework of Reference for Languages, you will be able to present your application letter to a Brazilian university*



“

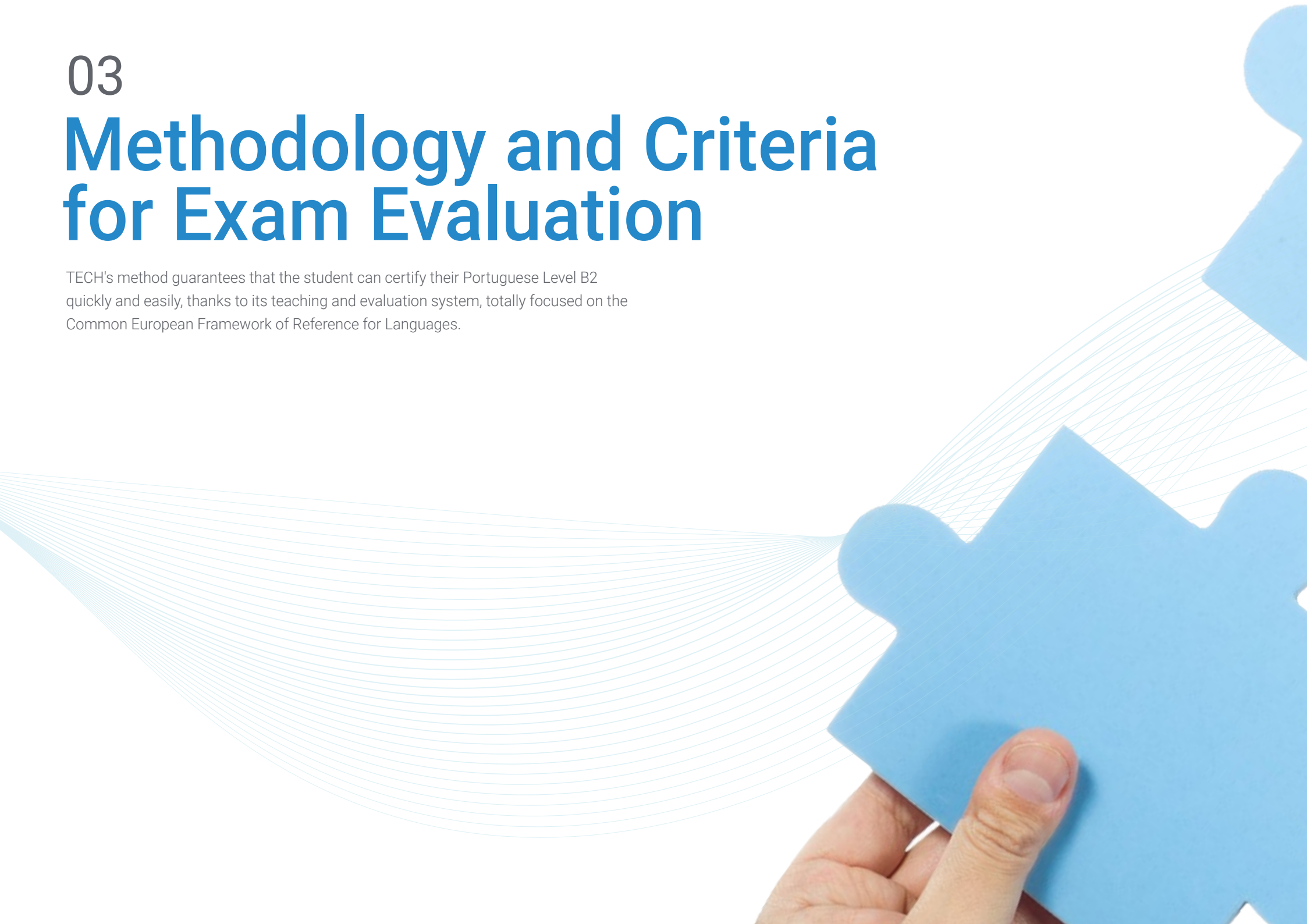
*It's time to continue to improve your profile at an international level and prove that you know Portuguese, thanks to this TECH university exam"*



03

# Methodology and Criteria for Exam Evaluation

TECH's method guarantees that the student can certify their Portuguese Level B2 quickly and easily, thanks to its teaching and evaluation system, totally focused on the Common European Framework of Reference for Languages.





“

*The oral and written comprehension and written expression tests are performed by computer. The speaking test is conducted with one or two examiners”*

## What are the B2 Level Skills?

The B2 level accreditation test corresponds to the fourth level of the six levels that make up the Common European Framework of Reference for Languages. At this level, the user is predisposed to an advanced proficiency in the language, being able to develop numerous linguistic characteristics:



01

Understand the main ideas in complex texts which deal with both concrete and abstract topics, even if they are of a technical nature, as long as they are within their field of expertise

02

Interact with native speakers with a sufficient degree of fluency and naturalness, so that communication is effortless for the interlocutors



*Language School certificates are only valid in the country of origin. Not in Europe or anywhere else in the world. That's why you need a CEFR qualification with TECH: It's valid worldwide!"*

03

Produce clear and detailed texts on a range of diverse topics, as well as defend their point of view on general topics, indicating the pros and cons or different options

04

Describe experiences, events, desires and aspirations, as well as briefly justify their opinions or explain their plans

## B2 Level Self-Assessment Chart

### What will students be able to do after completing the course?

Comprehension	Speaking	Writing
<p><b>Listening Comprehension</b></p> <ul style="list-style-type: none"><li>• Understand long speeches and lectures, and even follow complex lines of argument as long as the subject matter is relatively well known.</li><li>• Understand almost all television news and current affairs programs</li><li>• Understand most films in which the language is spoken at a standard language level</li></ul> <p><b>Reading Comprehension</b></p> <ul style="list-style-type: none"><li>• Read articles and reports related to contemporary issues in which the authors adopt specific positions or points of view</li><li>• Understand contemporary literary prose</li></ul>	<p><b>Oral Interaction</b></p> <ul style="list-style-type: none"><li>• Participate in a conversation with some fluency and spontaneity, enabling normal communication with native speakers</li><li>• Take an active part in debates developed in everyday situations, explaining and defending their points of view</li></ul> <p><b>Oral Expression</b></p> <ul style="list-style-type: none"><li>• Present clear and detailed descriptions of a wide range of topics related to their specialty</li><li>• Explain a point of view on an issue by outlining the advantages and disadvantages of various options</li></ul>	<p><b>Written Expression</b></p> <ul style="list-style-type: none"><li>• Write clear and detailed texts on a wide range of topics related to their interests</li><li>• Writing essays or reports conveying information or proposing reasons to support or refute a particular point of view</li><li>• Write letters that emphasize the importance given to certain events and experiences</li></ul>

*Now is the time, certify your level and finally complete your resume with your Portuguese qualification. At TECH we make it easy for you to get it*



## Qualitative aspects of spoken language usage for Level B2

(According to the Common European Framework of Reference for Languages)

### What is expected to be achieved with this level?



#### Scope

---

- Have a sufficiently broad level of language to be able to give clear descriptions and express points of view on general topics without evidencing word search, and use complex sentences to to achieve this

#### Correction

---

- Demonstrate relatively high grammatical control
- Do not make mistakes that cause misunderstanding and corrects almost all their errors

#### Fluency

---

- Be able to produce fragments of speech with a fairly even rate; although may hesitate while searching for structures or expressions.
- Few long pauses are observed

#### Interaction

---

- Initiate speech, take their turn to speak at the right time, and end a conversation when they have to, although they may not always do so gracefully
- Collaborate in discussions on everyday topics, confirm their understanding, invite others to participate, etc.

#### Coherence

---

- Use a limited number of cohesion mechanisms to turn their sentences into a clear and coherent speech, although they may show some "nervousness" if the speech is long

## Objectives

01

### Listening comprehension objectives

The candidate is able to:

- ◆ Understand the main ideas of a linguistically complex discourse, dealing with both concrete and abstract topics delivered at a standard language level, including technical discussions within their field of specialization
- ◆ Understand long speeches and complex lines of reasoning as long as the subject matter is reasonably familiar and the development of the speech is facilitated by explicit markers
- ◆ Understand any type of speech, both face-to-face conversations and broadcast speeches, on topics, usual or not, of personal, social, academic or professional life Only excessive background noise, inadequate structuring of speech or idiomatic use of language affect their ability to understand
- ◆ Understand with some effort much of what is being said around them, but may find it difficult to participate effectively in a discussion with several native speakers if they do not modify their speech in some way
- ◆ Follow lively conversations between native speakers
- ◆ Understand the main ideas of linguistically complex lectures, talks and reports, and other forms of academic and professional presentation
- ◆ Understand statements and messages on concrete and abstract topics, in standard language and at a normal pace





02

**Reading comprehension objectives**

The candidate is able to:

- ♦ Understand most radio documentaries and other recorded or rebroadcast material spoken in standard language, and be able to identify the speaker's mood and tone
- ♦ Understand recordings in standard language that may be encountered in social, professional or academic life, and identify the speaker's points of view and attitudes, as well as the content of the information

- ♦ Read with a high degree of independence, adapt reading style and speed to different texts and purposes, and use appropriate reference sources selectively. Have a large active reading vocabulary, but may have some difficulty with uncommon idioms
- ♦ Read correspondence related to their field of expertise and easily grasp the essential meaning
- ♦ Quickly search through long and complex texts to locate relevant details.
- ♦ Quickly identify the content and significance of news stories, articles and reports on a wide range of professional topics and decide whether further analysis is appropriate
- ♦ Understand articles and reports related to current problems in which the authors express specific viewpoints
- ♦ Obtain information, ideas and opinions from highly specialized sources within their field of interest

- ♦ Understand specialized articles that are not in their field of expertise as long as they can use a dictionary from time to time to confirm their interpretation of the terminology
- ♦ Understand lengthy and complex instructions that are within their expertise, including details about conditions and warnings as long as they can re-read difficult sections
- ♦ Understand most television news and current affairs programs, including documentaries, live interviews, debates, theatrical plays and most standard-language films

- ♦ Speak fluently, accurately and effectively on a wide range of general, academic, professional or leisure topics, clearly marking the relationship between ideas
- ♦ Communicate spontaneously and have good grammatical control without showing many signs of having to restrict what to say and adopting a level of formality appropriate to the circumstances
- ♦ Understand in detail what is said in standard language, even in an environment with background noise
- ♦ Approach extensive conversations on most general topics, even in a noisy environment, in a clearly participatory manner
- ♦ Hold conversations with native speakers, without unintentionally amusing or annoying them, and without requiring them to behave differently than they would with a native speaker
- ♦ Convey a certain emotion and highlight the personal importance of facts and experiences
- ♦ Follow the rhythm of lively discussions between native speakers
- ♦ Express ideas and opinions with precision, present complex lines of argument convincingly and respond to them
- ♦ Take an active part in informal discussions that occur in everyday situations by making comments, clearly expressing their points of view, evaluating alternative proposals, making hypotheses and responding to them

03

**Speaking objectives**

The candidate is able to:

- ♦ Participate in conversations with a degree of fluency and spontaneity that enables regular interaction with native speakers without strain for either party
- ♦ Emphasize the personal importance of certain facts and experiences, express and defend points of view with clarity, providing adequate explanations and arguments

- With some effort, pick up much of what is said in discussions going on around them, but may find it difficult to participate effectively in discussions with several native speakers if they do not modify their speech in some way
- Express and sustain their opinions in discussions by providing appropriate explanations, arguments, and comments
- Keep up with lively discussions and accurately identify the arguments of different points of view. Express ideas and opinions accurately, presenting complex lines of argument and responding to them with conviction
- Understand, with complete certainty, detailed instructions. Contribute to the progress of the work by inviting others to participate, speak up, etc
- Outline an issue or problem clearly, speculating on the causes or consequences and comparing the advantages and disadvantages of different approaches
- Negotiate the resolution of conflicts, such as claiming an unfair traffic fine, claiming financial responsibility for damages caused in an apartment or for fault in an accident
- Develop their case for damages, using persuasive language to claim compensation, and clearly establish the limits of any concession they are willing to make
- Explain a problem that has arisen and make it clear that the service provider or customer must make concessions

- Understand and exchange complex information and advice on all matters related to their profession. Communicate detailed information with complete certainty
- Make clear and detailed descriptions of how to carry out a procedure. Synthesize and communicate information and arguments from a variety of sources
- Conduct effective and fluent interviews, even spontaneously departing from prepared questions, follow the thread and give interesting answers
- Take the initiative in an interview, and expand and develop their ideas, either with little help or getting it if needed from the interviewer

## 04

### Writing objectives

The candidate is able to:

- Express news and points of view effectively when writing and establish a relationship with other people's points of view.
- Write letters that convey some emotion and highlight the personal significance of events and experiences; comment on the news and views of the person you are writing to.

## Features of the B2 Portuguese Exam

### 1 What does the TECH Global University test assess?

---

- ♦ The contents of the exams and the evaluation criteria will be those corresponding to the CEFR descriptors
- ♦ No published assignments or test materials will be used
- ♦ The four skills (oral and written expression, oral and written comprehension) will be evaluated together or separately. Use of language tasks may also be included
- ♦ All test tasks, with the possible exception of the use of language tasks, will be close to real-world tasks and the text materials will be authentic, as far as possible and according to the level tested. This will be the case from level B1 onwards

### 2 How long does the test last?

---

- ♦ The exams, whatever the level, shall not be less than 142 minutes or more than 200 minutes long



### 3 How is the test carried out?

- The oral and written comprehension tests, as well as the written expression test, are conducted via computer
- The speaking test consists of an interview, whenever possible, with two examiners and recorded
- The written and oral expression tests, whenever possible, will be evaluated by two examiners according to the procedures established by TECH

*Candidates must obtain at least a 6 on each part of the exam in order to obtain a PASS grade*

*If you do not pass all areas, you will not get your certificate, but we will give you a detailed report of your skills in each area and competency*

### 4 What are the assessment criteria?

With regard to grades, TECH, following the recommendations, uses the following criteria:



Candidates who obtain at least 60% in each of the 4 parts of the exam will pass the exam. Based on the overall score, a grade will be awarded that will appear on the certificate issued by TECH, according to the following scale:



In the event that a candidate does not pass any of the 4 parts of the test, they must retake the entire exam.

## Structure, duration and weighting of the 4 parts of the examination

Below is a table with the sections, characteristics and duration of the different parts of the test.

Duration	Sections		Instructions
	Skill	Time	
B2 142-200 minutes	Speaking	Monologue and directed questions	12-15 minutes
	Listening comprehension	Short audios which may be short dialogues or monologues related to topics of the level.	35-45 minutes
	Writing	Various written expression activities; may include use of language activities.	50-70 minutes
	Reading comprehension	Various reading comprehension activities	45-70 minutes
			Instructions in mother tongue

## Structure of the Level B2 Portuguese exam

It consists of 4 parts:

### Listening, Speaking, Reading and Writing

The total duration of the exam is 142 to 200 minutes, with the first three parts taking place one after the other (1st Listening, 2nd Writing, 3rd Reading). There will be a minimum of 20 minutes of rest between the first three parts and the 4th part (Speaking), which can be done on the same day, or on a different day, with a maximum limit of 7 days after the other block has been completed.

### Listening (Duration 35-45 minutes)

Listening consists of 4 exercises, each of which is based on an audio recording that can be a monologue or a conversation between 2 or more people. Exercises include: multiple response, sentence completion, completion of charts, graphs or diagrams, and short answer in one or two sentences.

In this part of the exam, it should be noted that accents from any part of the world can be heard, which adds a substantial degree of difficulty.

### Reading (Duration: 45-70 minutes)

It consists of 40 questions grouped in 3 sections. Each text is 1.300 and 2.100 words long and several questions are asked about it. The texts are excerpts from books, research articles, newspapers and scientific journals. The type of questions, as in the oral part, is highly varied: multiple answers, completing tables, graphs or diagrams, locating information in the text, indicating the writer's opinion, etc.

### Writing (Duration: 50-70 minutes)

This part consists of two exercises, an essay between 125 and 250 words and another between 300 and 450 words. As a first draft, a small report is usually requested on a piece of information provided to the examinee in any format (text, graph, table or diagram).

Regarding the 300-450 word essay, a piece of information is usually presented very briefly (a couple of lines), followed by a statement about it, and then the candidate is asked to explain whether they agree or disagree with the statement, briefly stating the necessary arguments. The second exercise accounts for two thirds of the "Writing" grade and the first exercise for one third.

### Speaking (Duration: 12-15 minutes)

In this last part, a conversation is held with an examiner, and it is designed to be as realistic as possible. It is divided into 3 subsections. In the first, the candidate responds to personal, family and/or everyday questions. In the second, the candidate discusses a specific topic indicated by the examiner. In this case, the ability to produce a coherent and orderly discourse is valued. In the third and final one, both the examiner and the candidate have a conversation on a specific topic, where oral interaction and discussion skills are assessed. The entire speaking part is recorded for later review purposes.



## Detailed Description of the B2 Portuguese Exam

Parts of the Exam	Duration	Tests	Scoring
<p><b>Reading Comprehension</b></p> <p>The texts or documents will be authentic (between 1.300 and 2.100 words in total) and of different types: informative, argumentative, narrative, opinion, descriptive. The candidate will be required to perform 3/4 tasks which may include:</p> <ul style="list-style-type: none"> <li>♦ Multiple choice</li> <li>♦ Matching or relating sentences or statements to different parts of the text</li> <li>♦ Reintegration of a fragment into a text</li> </ul>	45-70 minutes	3 or 4 tasks min 20 items	25% (1 point per item)
<p><b>Listening Comprehension</b></p> <p>The auditory texts can be a conversation, an interview or a talk of formal, informal or academic register, and will be listened to twice. The candidate will have to do 3 or 4 tasks that can be:</p> <ul style="list-style-type: none"> <li>♦ Multiple choice</li> <li>♦ Matching or relating phrases or statements to the different parts of the audition</li> </ul>	35-45 minutes	3 or 4 tasks min 20 items	25% (1 point per item)
<p><b>Writing</b></p> <p>The candidate will have to complete 2 tasks (minimum 300 words in total):</p> <ul style="list-style-type: none"> <li>♦ Write a formal or informal letter or e-mail. The candidate will have to perform some of the following functions: ask for or give information, complain, make recommendations or suggestions, give advice, give instructions, etc. 140/160 words</li> <li>♦ Develop a written text of between 160/210 words. You will be able to choose between 2 options of the following types: narrative, essay, article, review.</li> </ul>	50-70 minutes	2 tasks	25% (each text is evaluated out of 10)
<p><b>Speaking</b></p> <p>(Monologue and interaction in pairs) The candidate will have to perform 4 parts that will be recorded with their consent:</p> <ul style="list-style-type: none"> <li>♦ General questions about personal information (family, work, leisure time, possible future plans, past experiences etc.)</li> <li>♦ Compare 2 photos on the same topic and answer a question related to the two photos. The candidate will have to speak alone for approximately 1 minute.</li> <li>♦ Interaction in pairs. The 2 candidates will have to talk about a hypothetical situation, represented in images. Express opinions, preferences, agreement and disagreement, make suggestions. Questions related to the topic of part 3</li> </ul>	12-15 minutes	4 tasks	25% (each text is evaluated out of 10)

04

# Who Can Take the Exam?

Candidates for the Level B2 accreditation test may be members of the university community, as well as nationals or foreigners (over 16 years of age) who wish to accredit their level of linguistic competence for academic, educational, professional or personal purposes.

Although the interests and motivations of our students are different, they all have a common goal: to improve and certify their level of Portuguese.





“

*TECH provides you with access to your exam and helps you to pass it. Don't keep thinking about it and certify your level!"*

## Why are our students interested in certifying their level?



Academic 25%

- ♦ Access to a university degree
- ♦ Access to doctoral studies
- ♦ Access to an official Master's Degree or Postgraduate program



Educational 13%

- ♦ Continuation of language studies
- ♦ Improve language skills



Personal 12%

- ♦ Improve CV
- ♦ Confirmation of skills



Professional 50%

- ♦ Access to a new position
- ♦ Promotion or job improvement





“

*TECH supports you to take the exam online, providing you with everything you need so that you can focus on taking the test”*

# 05

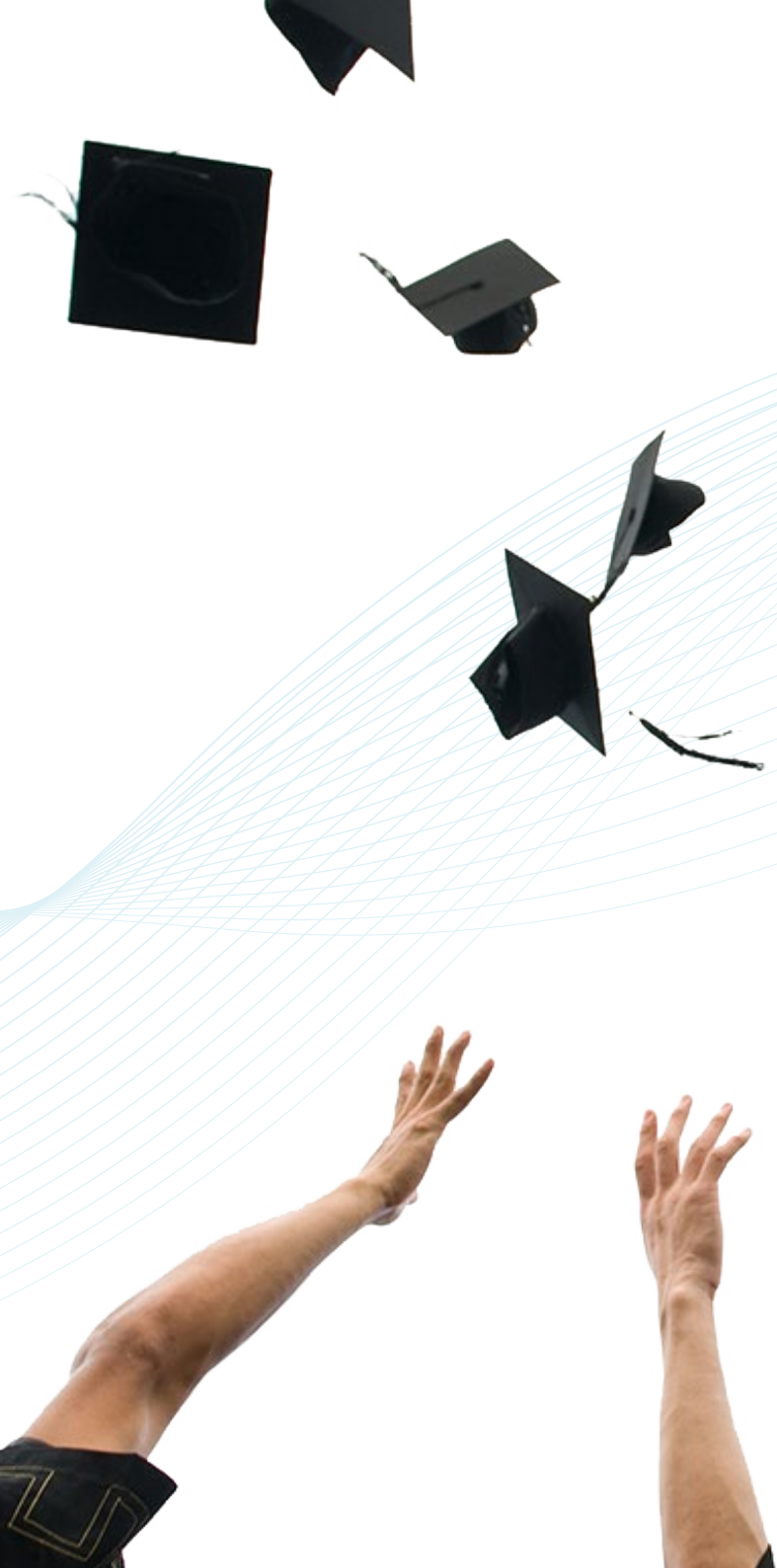
# Assessment and Certification

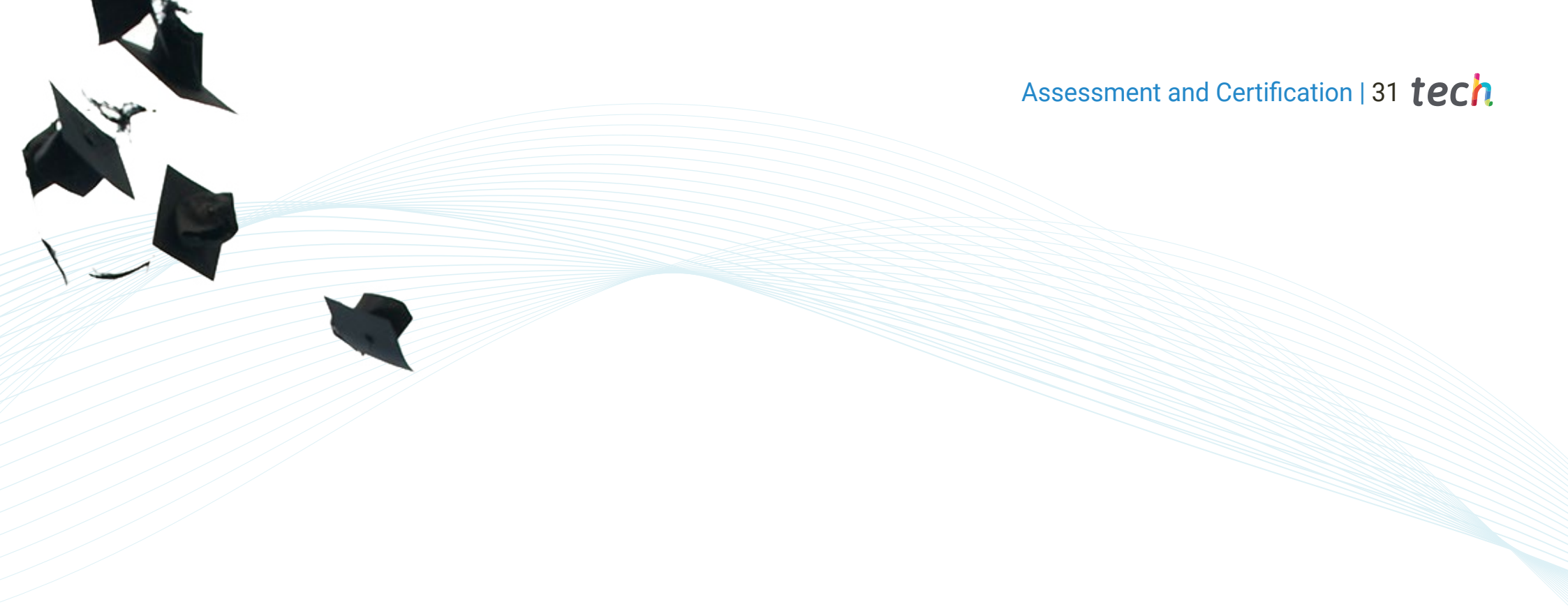
Each part of the exam accounts for 25% of the total grade. Candidates must obtain a minimum grade of 6 to pass each part of the exam.

- To obtain an overall PASS in the exam, it is necessary to pass all the tests and obtain an average of more than 6
- To obtain the overall grade of GOOD in the exam, you must pass all the tests with a grade higher than 6, and obtain an average between 7, 8 and 9
- To obtain the overall grade of EXCELLENT in the exam, you must pass all the tests with a grade higher than 6, and obtain an average between 9 and 10
- Only those who have obtained the qualification of PASS may request a certificate of aptitude issued by TECH Global University

The level will be considered acquired if the final total score is greater than or equal to 60% of the total possible score. No average will be made if a minimum of 60% of the possible score is not reached in each of the evaluated skills.

Certificates will only be issued if the level has been reached.





“

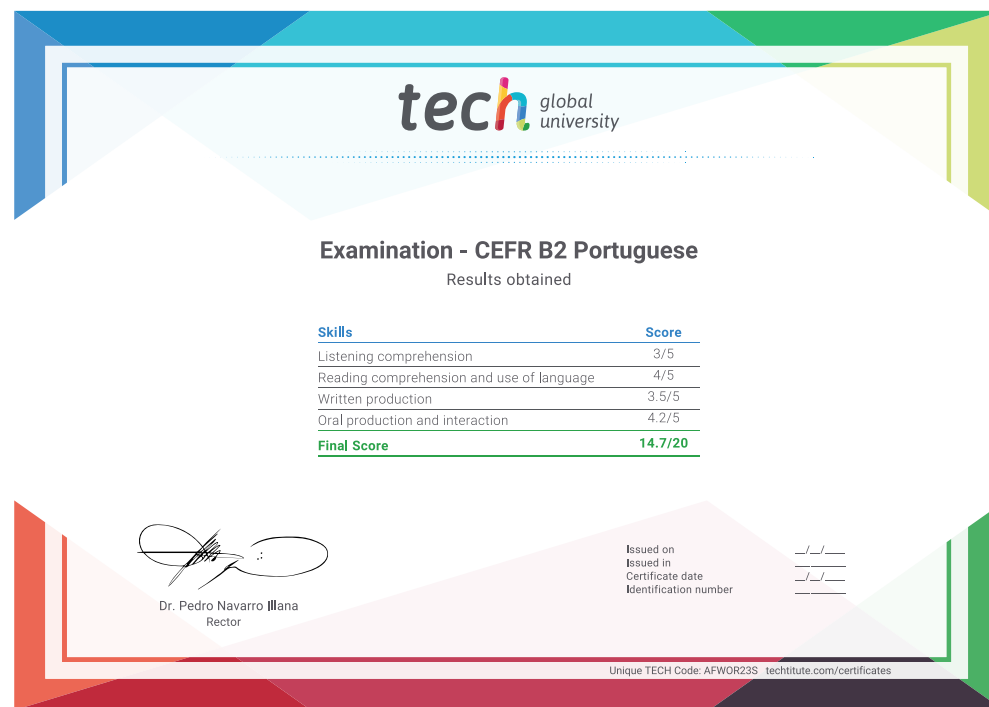
*To obtain the certificate, a score equal to or higher than 6 must be obtained in each of the 4 sections of the exam"*



*Take your exam online, with an expert tutor who will accompany you throughout the process. Come and certify your level!"*

## Certification

After successfully passing the exam, the student will receive a certificate of recognition that guarantees their preparation and proficiency at this level of the CEFR.



\*Apostille Convention. In the event that the student wishes to have their paper diploma issued with an apostille, TECH Global University will make the necessary arrangements to obtain it, at an additional cost.



## Instructions for the exam



---

Only candidates who have registered during the registration period and are on the official lists may sit for the examination.



---

It is compulsory to present a valid identification document or passport at the exam. No person without identification will be allowed access to the examination.



---

The language accreditation tests may be adapted to candidates with special needs. For this purpose, the type of disability (motor, visual, hearing, etc.) and the degree of disability, duly justified with a medical report, must be reported at the time of registration. Applications will be accepted depending on how far in advance the center is informed and the availability of resources at the center.



**tech** global  
university



**CEFR**  
**B2 Portuguese**  
Exam



**CEFR**  
**B2 Portuguese**  
Exam