

CEFR B1 Portuguese Exam



“

We prepare you for a global society, characterized by the unstoppable expansion of new markets; extraordinary cultural, social and linguistic diversity, innovation and technology as generators of opportunities; immediacy and proximity and, collaboration and constant change. We prepare you to join this new reality, by helping you achieve linguistic mastery"

tech global
university



CEFR
Level B1 Portuguese
Exam

Website: www.techtitute.com/us/school-of-languages/language-certification-exam/language-certification-exam-cefr-level-b1-portuguese

Index

01

Welcome

p. 4

02

Why Is it Important to Obtain
B1 Certification?

p. 8

03

Methodology and Criteria for
Exam Evaluation

p. 12

04

Who Can Take the Exam?

p. 26

05

Assessment
and Certification

p. 30



01

Welcome

Passing this exam awards the candidate with the B1 level of Portuguese according to the Common European Framework of Reference for Languages. Portuguese, especially Brazilian Portuguese, is a very useful language in today's world and TECH offers the opportunity to become accredited in it, so that those who pass the test can obtain certification quickly and easily, opening the doors to numerous professional options.





“

This exam grants to those who pass it a certificate of the only valid and worldwide recognized reference: the CEFR”

Introduction

Level accreditations are essential nowadays: they allow access to jobs, scholarships and positions in different institutions. In addition, Brazilian Portuguese is highly valued, so having a B1 certificate is of great value.

Are you ready? At TECH we offer you the official exam so that you can finally prove your level of Portuguese.

TECH carries out the B1 Portuguese exam with all the guarantees, according to the CEFR guidelines and on an individualized basis.





“

It is proven that learning languages increases your Intelligence. Learning a foreign language strengthens the brain's neural networks”

José Antonio Marina.
Philosopher, writer, and teacher.



Flexible and Tailored

Take your Language Certification Exam in person at any of our accredited locations or online from wherever you want.



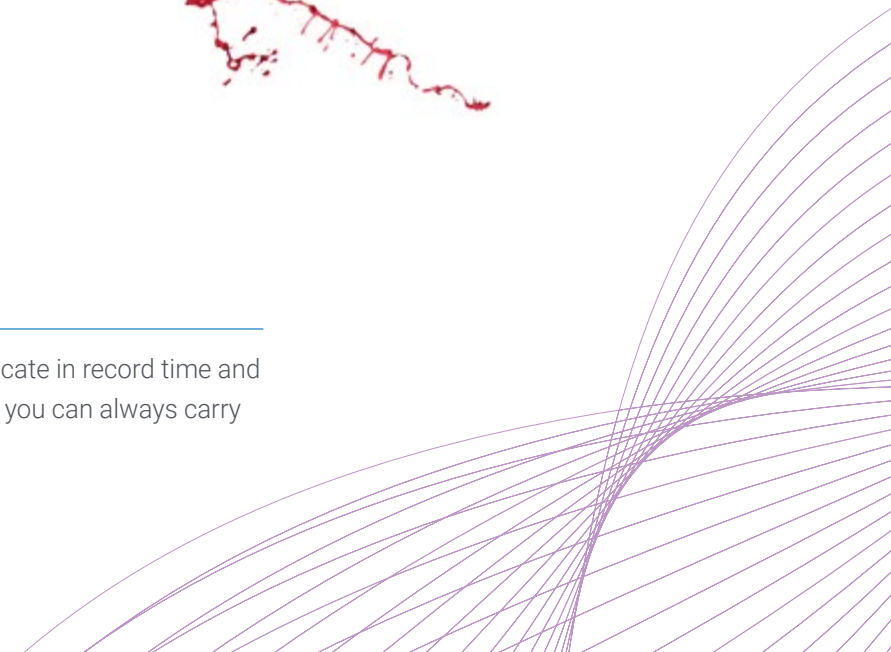
No Stress

Are you nervous about waiting in long lines to register for the exam and take the different tests? At TECH you can register online and take your test with a tutor just for you.



No Waiting

Receive your certificate in record time and in digital format so you can always carry it with you.



02

Why Is it Important to Obtain B1 Certification?

The B1 certificate is the first certificate recognized by most public administrations and companies in Brazil. It is becoming increasingly common to encounter the following phrase in thousands of job advertisements: "Must have a B1 level of Portuguese"

It is estimated that at least 200 hours of formal language study are needed to achieve this level, so anyone who sets their mind to it and has the time for adequate training can reach this level in a few months.





“

To be admitted to master's and doctoral academic programs at universities throughout Brazil, it is necessary to have Level B1 accreditation. Thanks to this university exam you will be able to achieve it"

TECH - Technological University

The Common European Framework of Reference for Languages is the only recognized and accredited system for assessing a student's level of proficiency. Although there are other certification systems, these come from private institutions and are, therefore, not valid. The CEFR establishes a single criterion to determine the difficulty of the courses and awards diplomas that are recognized throughout the European Union.

At TECH we offer you the test to obtain your level certificate based 100% on the CEFR, the only system recognized and accepted throughout Europe.

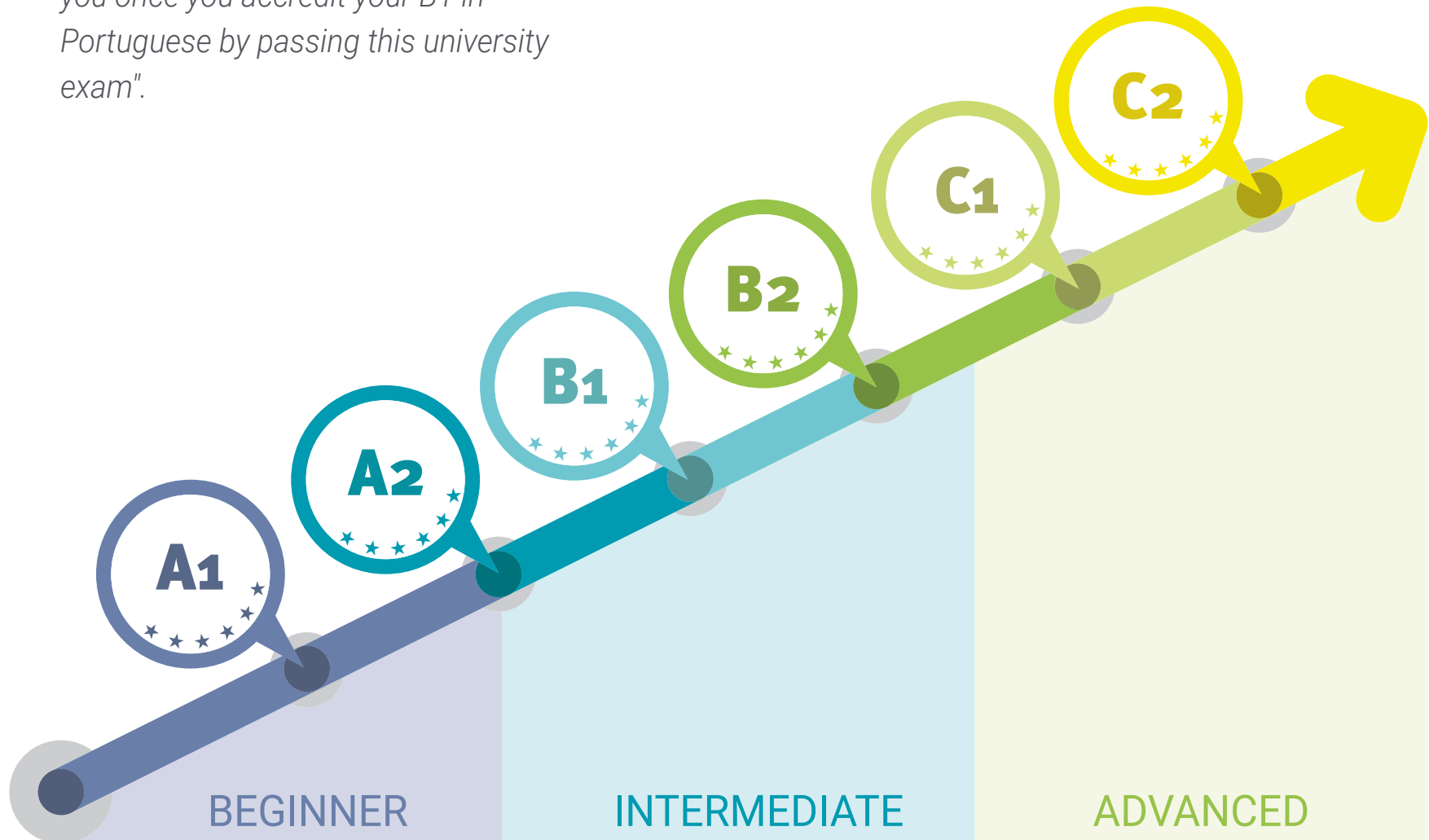
*The CEFR certificate is for life.
You will not need to update or
renew it.*

*This university test will allow you to progress
both personally and professionally thanks to
the wide international recognition afforded
by the CEFR, the world's most important
language reference system.*



“

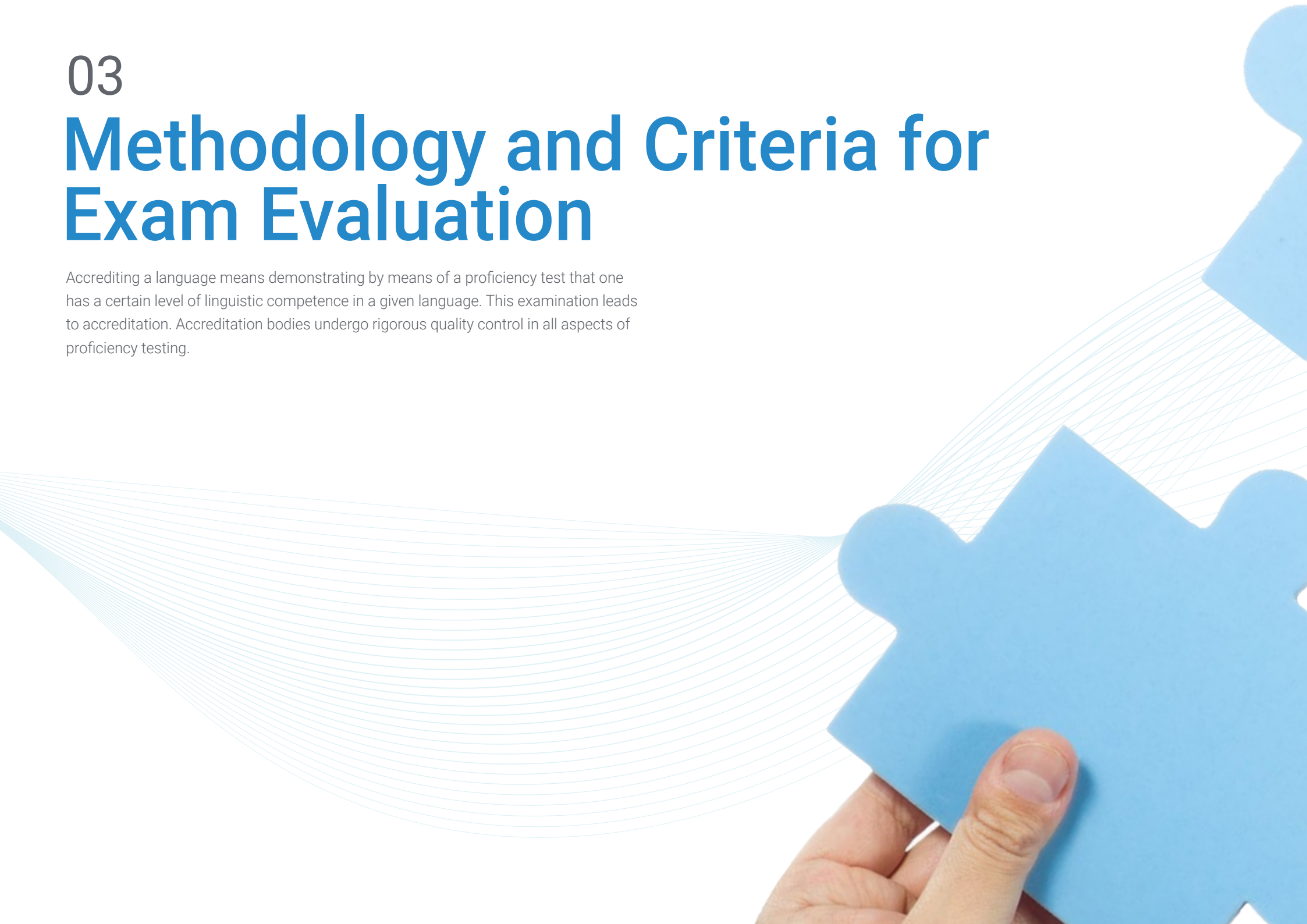
Large Brazilian and international companies will want to count on you once you accredit your B1 in Portuguese by passing this university exam”.



03

Methodology and Criteria for Exam Evaluation

Accrediting a language means demonstrating by means of a proficiency test that one has a certain level of linguistic competence in a given language. This examination leads to accreditation. Accreditation bodies undergo rigorous quality control in all aspects of proficiency testing.





“

TECH Global University complies with these standards and bases its examination methodology 100% on the recommendations of the CEFR”.

What are the B1 Level Skills?

Level B1 reflects the Threshold Level specification for a traveler going to a foreign country, and has perhaps two main features. The first is the ability to maintain interaction and make oneself understood in a variety of situations, for example:

- Generally understands the main ideas of extended discussions around them, provided the discourse is clearly articulated at a standard language level.
- Offers and asks for personal opinions in an informal discussion with friends
- Expresses in an understandable way the main idea you want to get across
- Flexibly uses broad and simple language to express much of what it wants to express
- Able to hold a conversation or debate, but can sometimes be difficult to understand when they try to say exactly what they want to say.
- Express themselves comprehensibly, although their pauses for some grammatical and lexical planning and some correction are evident, especially in long periods of free production.

The second characteristic is the ability to know how to deal flexibly with everyday problems such as, for example:

- Confronts less common situations on public transport than the typical situations that arise when booking travel through an agency or when traveling
- Participates in conversations on regular topics without having planned to do so
- Is able to raise complaints
- Takes the initiative in an interview or consultation (e.g., knows how to initiate a new topic), yet is still noted to be dependent on the interviewer during the interaction
- Knows how to ask someone to clarify or elaborate on what has just been said



At TECH you can take your Language Exam from home, with a personal tutor and with all the guarantees of a 100% CEFR certificate"

“Level B1 is the 4th level of the CEFR, and certifies a medium-high linguistic competence”.



At this level, as defined by the Common European Framework of Reference for Languages, students progress in language skills to develop what are considered "Basic User" skills with the ability to:

- 01 Can understand the main points of clear, standard language texts on familiar matters, whether in work, study or leisure situations.
- 02 Knows how to deal with most of the situations that may arise during a trip in areas where the language is used
- 03 Produce simple and coherent texts on topics that are familiar to him/her or in which he/she has a personal interest
- 04 Can describe experiences, events, desires and aspirations, as well as briefly justify their opinions or explain their plans

B1 level Self-Assessment Chart

What is a person with this level able to do?

Comprehension	Speaking	Writing
<p>Listening comprehension</p> <ul style="list-style-type: none">• Can understand the main ideas when the speech is clear and normal and deals with everyday matters that take place at work, at school, during leisure time, etcetera.• Understands the main idea of many radio or television programs dealing with current affairs or matters of personal or professional interest, when the articulation is relatively slow and clear.	<p>Oral interaction</p> <ul style="list-style-type: none">• Get by in almost all situations that arise when traveling to places where the language is spoken.• Can spontaneously engage in conversation on everyday topics of personal interest or that are relevant to daily life (e.g., family, hobbies, work, travel, and current events) <p>Oral expression</p> <ul style="list-style-type: none">• Knows how to link sentences in a simple way in order to describe experiences and facts, my dreams, hopes and ambitions.• Explain and briefly justify their opinions and projects.• Narrate a story or tale, the plot of a book or movie, and describe their reactions.	<p>Written Expression</p> <ul style="list-style-type: none">• Write simple and well linked texts on topics that are familiar or of personal interest.• Write personal letters describing experiences and impressions.

Now is the time, certify your level and finally complete your CV with your official Portuguese qualification. At TECH we make it easy for you to get it.

Qualitative aspects of spoken language usage for Level B1

(According to the Common European Framework of Reference for Languages)

What is expected to be achieved with this level?

Scope

- ◆ Possesses a large enough linguistic repertoire to get by and an adequate vocabulary to express themselves, albeit hesitantly and with circumlocutions, on topics such as their family, hobbies and interests, work, travel and current events.

Correction

- ◆ Uses with reasonable accuracy a repertoire of commonly used formulas and structures associated with predictable situations.

Fluency

- ◆ Can continue to speak in a comprehensible manner, although pauses for grammatical and lexical planning and correction are evident, especially during long periods of free speech.

Interaction

- ◆ Is able to initiate, maintain and end simple face-to-face conversations on everyday topics of personal interest.
- ◆ Can repeat part of what someone has said to confirm mutual understanding.

Coherence

- ◆ Link a series of short, distinct and simple elements to enable a linear sequence of related ideas.



Objectives

01

Listening comprehension objectives

The candidate is able to:

- ◆ Understand concrete, everyday or work-related information and identify both the general message and specific details as long as the speech is clearly articulated and with a normal accent.
- ◆ Understand the main ideas of clear, standard speech on everyday topics related to work, school or leisure time, including short narratives.
- ◆ Generally follow the main ideas of a long discussion going on around them, provided that the discourse is clearly articulated at a standard language level
- ◆ Understand, in general terms, simple and short speeches on everyday topics provided they are delivered with standard and clear pronunciation.
- ◆ Understand a lecture or talk that deals with their area of expertise, provided that the subject matter is familiar and the presentation is simple and clearly structured
- ◆ Understand simple technical information, such as operating instructions for frequently used appliances, as well as follow detailed instructions
- ◆ Understand the main ideas of radio news and other simpler recorded material dealing with everyday topics delivered relatively slowly and clearly.
- ◆ Understand the information content of most recorded or broadcast material related to topics of personal interest with clear, standard pronunciation.





02

Reading comprehension objectives

The candidate is able to:

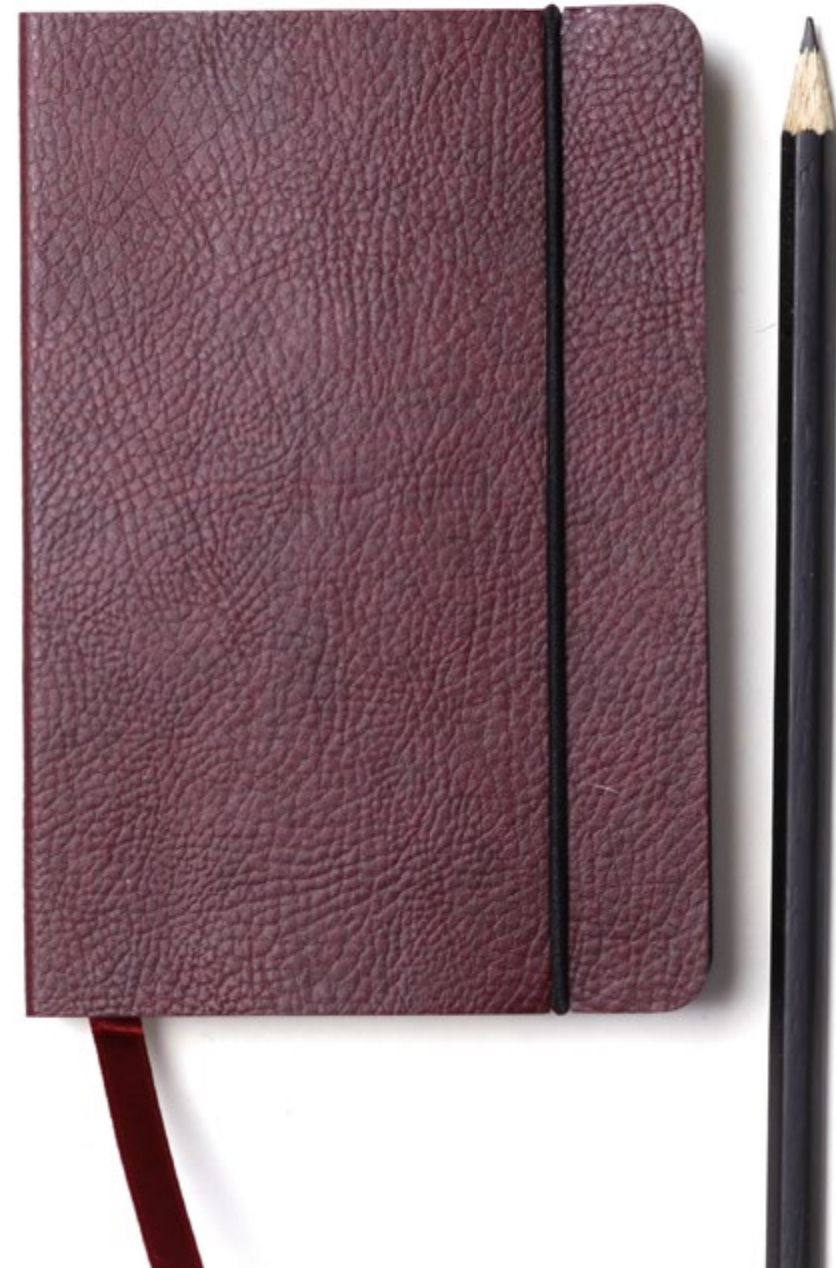
- Read simple factual texts on topics related to their area of expertise with a satisfactory level of comprehension
- Understand the description of facts, feelings and wishes in personal letters well enough to correspond regularly with a foreign friend.
- Find and understand relevant information in everyday written material, such as letters, catalogs, and short official documents.
- Consult long texts in order to find the desired information, and to know how to gather information from different parts of a text or from different texts in order to perform a specific task.
- Recognize significant ideas from simple newspaper articles that deal with everyday issues
- Identify the main conclusions in clearly argumentative texts. Recognize the line of argument in the treatment of the issue presented, though not necessarily in full detail
- Understand simple, clearly written instructions related to an appliance
- Understand many films where visuals and action drive much of the storyline and are articulated clearly and with a simple level of language
- Capture the main ideas of television programs dealing with everyday topics when they are articulated relatively slowly and clearly

03

Speaking objectives

The candidate is able to:

- ♦ Carry out, with a reasonable degree of fluency, a simple description of a variety of topics that are of interest to them, presenting them as a linear sequence of elements
- ♦ Give simple descriptions on a variety of common topics within your specialty
- ♦ Give simple narratives or descriptions with a reasonable degree of fluency, following a linear sequence of elements
- ♦ Make detailed accounts of experiences describing feelings and reactions.
- ♦ Report the details of unpredictable events, such as, for example, an accident
- ♦ Relate book or movie plots and describe your reactions to them
- ♦ Describe dreams, hopes and ambitions
- ♦ Describe real or imagined events and tell stories.
- ♦ Provide brief rationales and explanations for opinions, plans and actions.
- ♦ Develop arguments well enough so that they can be understood without difficulty most of the time.
- ♦ Make short rehearsed statements on a relevant topic within their specialty, which are clearly intelligible, despite being accompanied by an unmistakably foreign accent and intonation.
- ♦ Deliver a brief, prepared presentation on a topic within their specialty, with sufficient clarity to be followed without difficulty most of the time and whose main ideas are explained with reasonable accuracy. Can also answer supplemental questions, but may have to ask for repetition if spoken quickly

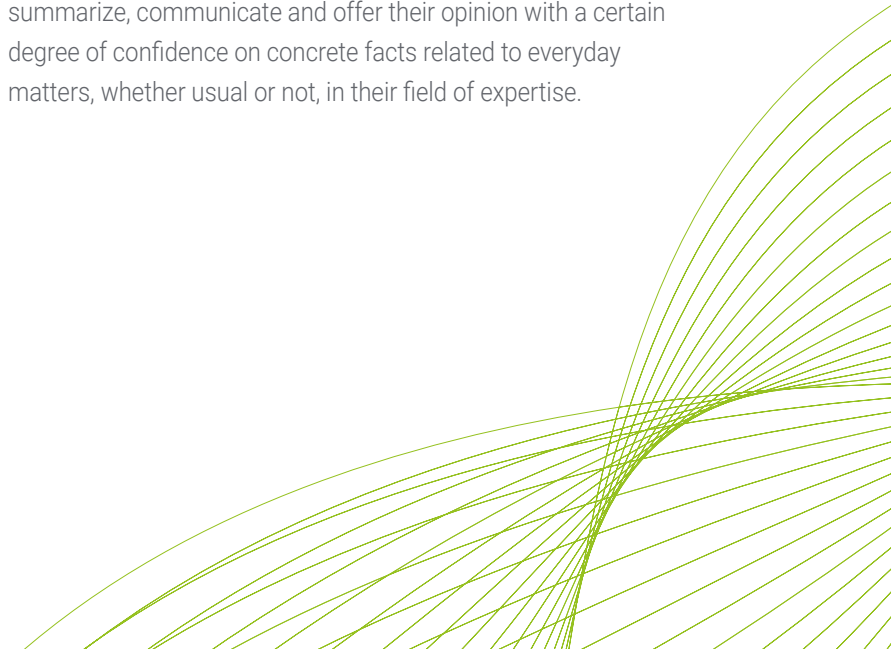


04

Writing objectives

The candidate is able to:

- Write simple, cohesive texts on a range of everyday topics within their field of interest, linking a series of different short items in a linear sequence
- Write simple and detailed descriptions of a range of everyday topics within their specialty
- Write accounts of experiences describing feelings and reactions in simple, structured texts
- Write a description of a specific event, a recent trip, real or imagined, and narrate a story.
- Write very brief reports in conventional format with information about common events and the reasons for certain actions
- Write short and simple essays on topics of interest. Can summarize, communicate and offer their opinion with a certain degree of confidence on concrete facts related to everyday matters, whether usual or not, in their field of expertise.



Features of the B1 Portuguese Exam

1 What does the TECH - Technological University test assess?

- ♦ The contents of the exams and the evaluation criteria will be those corresponding to the CEFR descriptors.
- ♦ No published assignments or test materials will be used.
- ♦ The four skills (oral and written expression, oral and written comprehension) will be evaluated together or separately. Use of language tasks may also be included.
- ♦ All test tasks, with the possible exception of the use of language tasks, will be close to real-world tasks and the text materials will be authentic, as far as possible and according to the level tested. This will be the case from level B1 onwards

2 How long does the test last?

- ♦ The exams, whatever the level, shall not be less than 137 minutes or more than 195 minutes long.



3 How is the test carried out?

- The oral and written comprehension tests, as well as the written expression test, are conducted via computer.
- The speaking test consists of an interview, whenever possible, with two examiners and recorded.
- The written and oral expression tests, whenever possible, will be evaluated by two examiners according to the procedures established by TECH.

Candidates must obtain at least a 6 on each part of the exam in order to obtain a PASS grade.

If you do not pass all areas, you will not get your certificate but we will give you a detailed report of your skills in each area and competency.

4 What are the assessment criteria?

- Candidates must obtain at least a 6 on each part of the exam in order to obtain a PASS grade



Candidates who obtain at least 60% in each of the 4 parts of the exam will pass the exam. Based on the overall score, a grade will be awarded that will appear on the certificate, according to the following scale:



In the event that a candidate does not pass any of the 4 parts of the test, they must retake the entire exam.

Structure, duration and weighting of the 4 parts of the exam

Below is a table with the sections, characteristics and duration of the different parts of the test.

Duration	Sections			Instructions
	Skill		Time	
B1 137-195 minutes	Speaking	Monologue and directed questions	12-15 minutes	Instructions in mother tongue
	Listening comprehension	2 audio/video documents of 5 min. Maximum 2 playbacks per document	30-40 minutes	
	Writing	Production of 2 different types of texts of at least 250 words in total	50-70 minutes	
	Reading comprehension	2 authentic documents of at least 900 words	45-70 minutes	



Knowing the nature of the test before you take it will facilitate optimal preparation"

Structure of the Level B1 Portuguese exam

It consists of 4 parts:

Listening, Speaking, Reading and Writing

The total duration of the exam is 137 to 195 minutes, with the first three parts taking place one after the other (1st Listening, 2nd Writing, 3rd Reading). There will be a minimum of 20 minutes of rest between the first three parts and the 4th part (Speaking), which can be done on the same day, or on a different day, with a maximum limit of 7 days after the other block has been completed.

Listening (Duration 30-40 minutes)

Listening consists of 4 exercises, each of which is based on an audio recording that can be a monologue or a conversation between 2 or more people. Exercises include, multiple choice, sentence completion, completion of charts, graphs or diagrams, and short answers in one or two sentences. In this part of the exam, it should be noted that accents from any part of the world can be heard, which adds a substantial degree of difficulty.

Reading (Duration: 45-70 minutes)

It consists of 40 questions grouped in 3 sections. Each text is between one and two pages long and several questions are asked about it. The texts are actual excerpts from books, research articles, newspapers and scientific journals. The type of questions, as in the oral part, is highly varied: multiple answers, completing tables, graphs or diagrams, locating information in the text, indicating the writer's opinion, etc.

Writing (Duration: 50-70 minutes)

This part consists of two exercises, an essay between 200 and 350 words and another between 450 and 600 words. As a first draft a small report is usually requested on a piece of information provided to the examinee in any format (text, graph, table or diagram).

Regarding the 450-600 word essay, a piece of information is usually presented very briefly (a couple of lines), followed by a statement about it, and then the candidate is asked to explain whether they agree or disagree with the statement, briefly stating the necessary arguments. The second exercise accounts for two thirds of the "Writing" grade and the first exercise for one third.

Speaking (Duration: 12-15 minutes)

In this last part, a conversation is held with an examiner, and it is designed to be as realistic as possible. It is divided into 3 subsections. In the first, the candidate responds to personal, family and/or everyday questions. In the second, the candidate discusses a specific topic indicated by the examiner. In this case, the ability to produce a coherent and orderly discourse is valued. In the third and last one, both the examiner and the candidate have a conversation on a specific topic, where oral interaction and discussion skills are assessed. The entire speaking part is recorded for later review purposes.

Sections						
Duration	Skills	Observations	Items	Tasks	Time	Instructions
B1 137-195 minutes	Oral expression and interaction	Monologue and directed questions. Oral examinations must be recorded		Minimum 2	12-15 minutes	Instructions in mother tongue
	Listening comprehension	Various audio/video documents (min. 2 documents.) Maximum of 2 playbacks per document. Minimum duration of 1min. and maximum of 4 min. per document	Minimum of 5 items and maximum of 10 items per task. Minimum total of 15 items, recommended 20	Minimum 2, maximum 4. Dichotomous tasks are not accepted.	30-40 minutes	
	Written Expression	Production of different types of texts	Minimum 30 words, maximum 80 words	Minimum of 2 tasks	50-70 minutes	
	Reading Comprehension	Several authentic documents; minimum of 800, maximum of 1300 words total	Minimum of 5 items and maximum of 10 items per task. Minimum total of 15 items, recommended 20	Minimum 2, maximum 4. Dichotomous tasks are not accepted.	45-70 minutes	

04

Who Can Take the Exam?

Candidates for the Level B1 accreditation test may be members of the university community, as well as nationals or foreigners (over 16 years of age) who wish to accredit their level of linguistic competence for academic, educational, professional or personal purposes.

Although the interests and motivations of our students are different, they all have a common goal: to improve and certify their level of Portuguese.





“

TECH facilitates access to your official exam and helps you to pass it. Don't keep thinking about it and certify your level!"

Why are our students interested in certifying their level?



Academic 25%

- ♦ Access to a university degree
- ♦ Access to doctoral studies
- ♦ Access to an official Master's Degree or postgraduate training program



Educational 13%

- ♦ Continuation of language studies
- ♦ Improve language skills



Personal 12%

- ♦ Improve CV
- ♦ Confirmation of skills



Professional 50%

- ♦ Access to a new position
- ♦ Promotion or job improvement





“

TECH supports you to take the exam online, putting all the means at your disposal so that you can focus on taking the test”

05

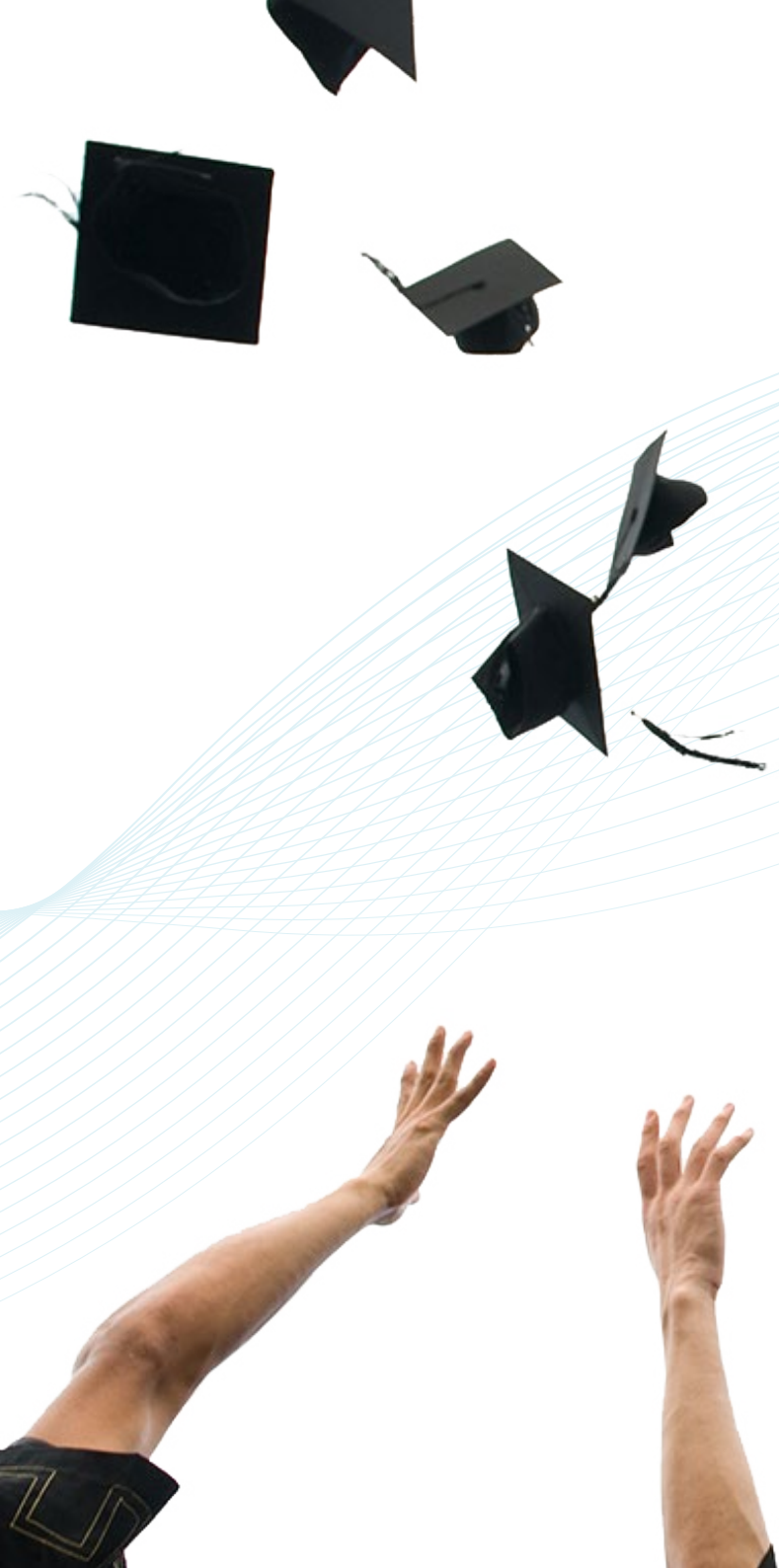
Assessment and Certification

Each part of the exam accounts for 25% of the total grade. Candidates must obtain a minimum grade of 6 to pass each part of the course.

- To obtain an overall PASS in the exam, it is necessary to pass all the tests and obtain an average of more than 6.
- To obtain the overall grade of GOOD in the exam, you must pass all the tests with a grade higher than 6 and obtain an average between 7, 8 and 9.
- To obtain the overall grade of EXCELLENT in the exam, you must pass all the tests with a grade higher than 6, and obtain an average between 9 and 10.
- Only those who have passed may request a certificate of aptitude issued by TECH - Technological University.

The level will be considered acquired if the final total score is greater than or equal to 60% of the total possible score. No average will be made if a minimum of 60% of the possible score is not reached in each of the evaluated skills.

Certificates will only be issued if the level has been reached.





“

To obtain the certificate, a score equal to or higher than 6 must be obtained in each of the 4 sections of the exam”



Take your exam online, with an expert tutor who will accompany you throughout the process. Come and certify your level!"

Certification

After successfully passing the exam, the student will receive a certificate of recognition that guarantees their preparation and proficiency at this level of the CEFR.

tech global university

This certificate hereby acknowledges that

Mr./Ms. _____
has passed the corresponding tests for

Language Certification Exam in B1 Portuguese

This is a CEFR qualification
obtained on __/__/__


Dr. Pedro Navarro Illana
Rector

Unique TECH Code: AFWOR23S techtute.com/certificates

tech global university

Examination - CEFR B1 Portuguese
Results obtained

Skills	Score
Listening comprehension	3/5
Reading comprehension and use of language	4/5
Written production	3.5/5
Oral production and interaction	4.2/5
Final Score	14.7/20

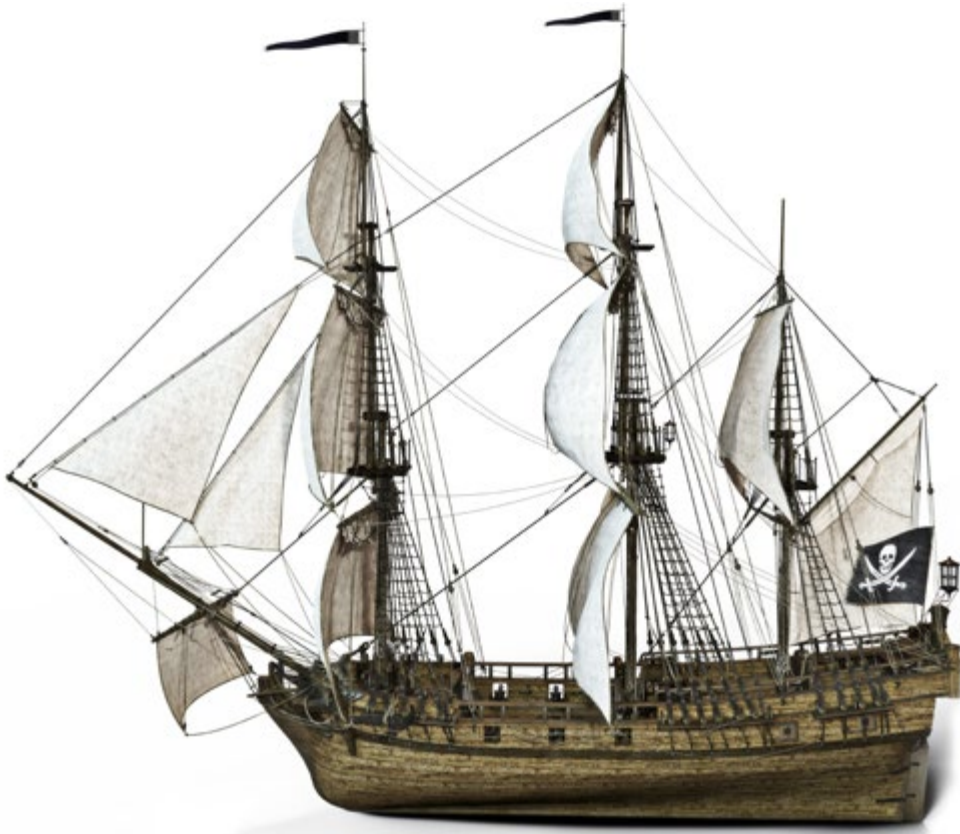

Dr. Pedro Navarro Illana
Rector

Issued on _____
Issued in _____
Certificate date _____
Identification number _____

Unique TECH Code: AFWOR23S techtute.com/certificates

*Apostille Convention. In the event that the student wishes to have their paper diploma issued with an apostille, TECH Global University will make the necessary arrangements to obtain it, at an additional cost.

Instructions for the exam



Only candidates who have registered during the registration period and are on the official lists may sit for the examination.



It is compulsory to present a valid identification document or passport at the exam. No person without identification will be allowed access to the examination.



The language accreditation tests may be adapted to candidates with special needs. For this purpose, the type of disability (motor, visual, hearing, etc.) and the degree of disability, duly justified with a medical report, must be reported at the time of registration. Applications will be accepted depending on how far in advance the center is informed and the availability of resources at the center.



tech global
university



CEFR
B1 Portuguese
Exam

CEFR
B1 Portuguese
Exam