

# Postgraduate Certificate

## Medical Department in Pharma Biotech





## Postgraduate Certificate Medical Department in Pharma Biotech

- » Modality: Online
- » Duration: 6 weeks
- » Certificate: TECH Global University
- » Accreditation: 6 ECTS
- » Schedule: at your own pace
- » Exams: online
- » Target Group: University graduates and postgraduates who have previously completed any of the programs in the fields of Business, Economics, Medicine, Pharmaceuticals, Biology, Chemistry

Website: [www.techitute.com/us/school-of-business/postgraduate-certificate/medical-department-pharma-biotech](http://www.techitute.com/us/school-of-business/postgraduate-certificate/medical-department-pharma-biotech)

# Index

01

Welcome

p. 4

02

Why Study at TECH?

p. 6

03

Why Our Program?

p. 10

04

Objectives

p. 14

05

Structure and Content

p. 20

06

Study Methodology

p. 26

07

Our Students' Profiles

p. 34

08

Course Management

p. 38

09

Impact on Your Career

p. 42

10

Benefits for Your Company

p. 46

11

Certificate

p. 50

# 01 Welcome

In order to guarantee the safety, efficacy and quality of the company's medical products, it is essential to have a department specialized in this area. In this way, the solid scientific expertise of its members supports drug development, product surveillance, effective communication and continuing medical education. This is why it has become important for business professionals to be at the forefront of all matters related to this area and to know how it works. In this sense, TECH has developed a 100% online program that will give the students the possibility of coordinating their daily responsibilities with their studies, since they will not be subject to established schedules.



Postgraduate Certificate in Medical Department in Pharma Biotech  
TECH Global University



*You will learn about the structure of the Medical Departments and their functions in different companies, thanks to this Postgraduate Certificate only offered by TECH"*

02

# Why Study at TECH?

TECH is the world's largest 100% online business school. It is an elite business school, with a model based on the highest academic standards. A world-class center for intensive managerial skills education.

“

*TECH is a university at the forefront of technology, and puts all its resources at the student's disposal to help them achieve entrepreneurial success"*



### At TECH Global University



#### Innovation

The university offers an online learning model that balances the latest educational technology with the most rigorous teaching methods. A unique method with the highest international recognition that will provide students with the keys to develop in a rapidly-evolving world, where innovation must be every entrepreneur's focus.

"Microsoft Europe Success Story", for integrating the innovative, interactive multi-video system.



#### The Highest Standards

Admissions criteria at TECH are not economic. Students don't need to make a large investment to study at this university. However, in order to obtain a qualification from TECH, the student's intelligence and ability will be tested to their limits. The institution's academic standards are exceptionally high...

**95%**

of TECH students successfully complete their studies



#### Networking

Professionals from countries all over the world attend TECH, allowing students to establish a large network of contacts that may prove useful to them in the future.

**+100000**

executives prepared each year

**+200**

different nationalities



#### Empowerment

Students will grow hand in hand with the best companies and highly regarded and influential professionals. TECH has developed strategic partnerships and a valuable network of contacts with major economic players in 7 continents.

**+500**

collaborative agreements with leading companies



#### Talent

This program is a unique initiative to allow students to showcase their talent in the business world. An opportunity that will allow them to voice their concerns and share their business vision.

After completing this program, TECH helps students show the world their talent.



#### Multicultural Context

While studying at TECH, students will enjoy a unique experience. Study in a multicultural context. In a program with a global vision, through which students can learn about the operating methods in different parts of the world, and gather the latest information that best adapts to their business idea.

TECH students represent more than 200 different nationalities.



#### Learn with the best

In the classroom, TECH's teaching staff discuss how they have achieved success in their companies, working in a real, lively, and dynamic context. Teachers who are fully committed to offering a quality specialization that will allow students to advance in their career and stand out in the business world.

Teachers representing 20 different nationalities.



*At TECH, you will have access to the most rigorous and up-to-date case analyses in academia"*

TECH strives for excellence and, to this end, boasts a series of characteristics that make this university unique:



#### Analysis

TECH explores the student's critical side, their ability to question things, their problem-solving skills, as well as their interpersonal skills.



#### Academic Excellence

TECH offers students the best online learning methodology. The university combines the Relearning method (postgraduate learning methodology with the best international valuation) with the Case Study. Tradition and vanguard in a difficult balance, and in the context of the most demanding educational itinerary.



#### Economy of Scale

TECH is the world's largest online university. It currently boasts a portfolio of more than 10,000 university postgraduate programs. And in today's new economy, **volume + technology = a ground-breaking price**. This way, TECH ensures that studying is not as expensive for students as it would be at another university.

03

# Why Our Program?

Studying this TECH program means increasing the chances of achieving professional success in senior business management.

It is a challenge that demands effort and dedication, but it opens the door to a promising future. Students will learn from the best teaching staff and with the most flexible and innovative educational methodology.

“

*We have highly qualified teachers and the most complete syllabus on the market, which allows us to offer you education of the highest academic level”*

This program will provide you with a multitude of professional and personal advantages, among which we highlight the following:

01

### A Strong Boost to Your Career

By studying at TECH, students will be able to take control of their future and develop their full potential. By completing this program, students will acquire the skills required to make a positive change in their career in a short period of time.

*70% of students achieve positive career development in less than 2 years.*

02

### Develop a strategic and global vision of the company

TECH offers an in-depth overview of general management to understand how each decision affects each of the company's different functional fields.

*Our global vision of companies will improve your strategic vision.*

03

### Consolidate the student's senior management skills

Studying at TECH means opening the doors to a wide range of professional opportunities for students to position themselves as senior executives, with a broad vision of the international environment.

*You will work on more than 100 real senior management cases.*

04

### You will take on new responsibilities

The program will cover the latest trends, advances and strategies, so that students can carry out their professional work in a changing environment.

*45% of graduates are promoted internally.*

05

### Access to a powerful network of contacts

TECH connects its students to maximize opportunities. Students with the same concerns and desire to grow. Therefore, partnerships, customers or suppliers can be shared.

*You will find a network of contacts that will be instrumental for professional development.*

06

### Thoroughly develop business projects.

Students will acquire a deep strategic vision that will help them develop their own project, taking into account the different fields in companies.

*20% of our students develop their own business idea.*

07

### Improve soft skills and management skills

TECH helps students apply and develop the knowledge they have acquired, while improving their interpersonal skills in order to become leaders who make a difference.

*Improve your communication and leadership skills and enhance your career.*

08

### You will be part of an exclusive community

Students will be part of a community of elite executives, large companies, renowned institutions, and qualified teachers from the most prestigious universities in the world: the TECH Global University community.

*We give you the opportunity to study with a team of world-renowned teachers.*



# 04 Objectives

The main objective of this program is to provide the business professional with the knowledge and tools necessary to work in clinical areas. This will enable you to use your business skills to contribute to the company's success in the medical and pharmaceutical field. In this way, you can ensure regulatory compliance, efficient project management, marketing strategy development and effective communication with healthcare professionals.

“

*You will become an expert in clinical trials, their fundamentals, phases and the legislation that surrounds them, through this 100% virtual program"*



**TECH makes the goals of their students their own goals too**  
**Working together to achieve them**

The **Postgraduate Certificate in Medical Department in Pharma Biotech** enables the student to:

01

Acquire knowledge about the history of strategic Management

04

Optimize working capital management

05

Understand the different types of healthcare systems, such as public, private/private insurance, and managed health care

06

Assess unmet patient needs and chronicity management

02

Categorize the different definitions over time



07

Understand what Market Access is and how the need for this function arises in the pharmaceutical industry

03

Evaluate financial efficiency

08

Know about the structure, organization and functions of the National Health System

09

Delve into the steps to be followed to plan the market access of a new drug

12

Understand the essence of Coaching and its approach to learning

13

Acquire basic knowledge about the fundamental concepts of leadership and its application in the pharmaceutical industry

14

Understand and categorize leadership theories, exploring the leadership process and the different existing styles and models

10

Review the points to be analyzed in a phase prior to the development of the access plan to know about the environment and competitors



15

Obtain an effective tool to achieve results

11

Know about the capabilities and ethics of the Coach

16

Define unique and differentiated value propositions

05

# Structure and Content

The program brings together a diversity of key concepts so that the business professional has a broad knowledge in important clinical areas. In this way, the operation and responsibilities of the Medical Department in the pharmaceutical industry will be comprehensively addressed. Likewise, the importance of this area in the organizational environment will be stand out, highlighting its informative work on treatment advances and the need for scientific and communicative skills.

“

*With TECH, you will immerse yourself in the world of clinical trial monitoring and master the most advanced monitoring and control techniques"*



## Syllabus

Following this approach, TECH has designed the Postgraduate Certificate in Medical Department in Pharma Biotech. The student will delve into clinical trials, standing out their importance, the phases that conform them, the legislation that regulates them and the objectives they pursue. In addition, clinical trial methodologies will be discussed, including the necessary documentation and strategies for dealing with the challenges inherent in this process.

It will also focus on clinical trial monitoring and follow-up, highlighting the relevance of efficient project management. In the same sense, participants will be able to explore clinical practice studies based on real data, as well as the importance of collaboration with healthcare professionals.

Consistent with the above, a quality educational experience will be offered, which will provide students with a wide range of teaching materials, available in an exclusive virtual library. All this added to the implementation of the Relearning method, which will ensure the professional an enriching and effective learning experience. Moreover, the fact that this program will be offered with a virtual methodology will allow participants to adjust their time in a more flexible way. In view of the fact that they will be able to access the content at any time and from anywhere, since they will only need a device with an Internet connection, which will allow them to adapt easily without fixed schedules.

This Postgraduate Certificate takes place over 6 weeks and consists of 1 module:

### Module 1

#### The Medical Department



## Where, When and How is it Taught?

TECH offers the possibility of developing this Postgraduate Certificate in Medical Department in Pharma Biotech completely online. During the 6 weeks of the specialization, the student will be able to access all the contents of this program at any time, which will allow them to self-manage their study time.

*A unique, key, and decisive educational experience to boost your professional development and make the definitive leap.*



**Module 1. The Medical Department**

<p><b>1.1. The Medical Department</b></p> <p>1.1.1. General Structure of the Medical Department in Different Companies</p> <p>1.1.2. Purpose and Functions of the Department</p> <p>1.1.3. Roles in the Medical Department</p> <p>1.1.4. How They Relate to Other Departments: Marketing, Access, Sales, etc.</p> <p>1.1.5. Career Opportunities for the Medical Department in the Pharmaceutical Industry</p>	<p><b>1.2. Monitoring</b></p> <p>1.2.1. Fundamentals of Clinical Development</p> <p>1.2.2. Legislation in Clinical Trials</p> <p>1.2.3. Types of Clinical Trials</p> <p>1.2.4. Clinical Trials Phases</p> <p>1.2.4.1. Phase I Clinical Studies</p> <p>1.2.4.2. Phase II Clinical Studies</p> <p>1.2.4.3. Phase III Clinical Studies</p> <p>1.2.4.4. Phase IV Clinical Studies</p>	<p><b>1.3. Clinical Trials Methodology</b></p> <p>1.3.1. Clinical Trial Design</p> <p>1.3.2. Stages in the Development of Clinical Trials</p> <p>1.3.3. Clinical Trials Viability</p> <p>1.3.4. Identification and Selection of Researcher Centers</p> <p>1.3.5. Recruitment Materials and Strategies</p> <p>1.3.6. Contracts with Research Centers</p> <p>1.3.7. Protocol</p> <p>1.3.8. Patient Information Sheet and Informed Consent</p>	<p><b>1.4. Trial Monitoring: Monitoring and Control</b></p> <p>1.4.1. Monitoring Visit</p> <p>1.4.1.1. Pre-Study Visit</p> <p>1.4.1.2. Initiation Visit</p> <p>1.4.1.3. Monitoring Visit</p> <p>1.4.1.4. Closing Visit</p> <p>1.4.2. Remote Monitoring</p> <p>1.4.3. Monitoring Visit Reports</p> <p>1.4.4. Data Management Obtaining Results</p>
<p><b>1.5. Real Clinical Practice Studies RWE</b></p> <p>1.5.1. RWE Studies: Design, Analysis, Minimization of Bias.</p> <p>1.5.2. Types of RWE Study</p> <p>1.5.3. Integration in the Medical Plan</p> <p>1.5.4. Inquiry and Communication of Results</p> <p>1.5.5. Current Challenges in the Use of Evidence and Knowledge of RWE</p> <p>1.5.6. How RWE Can Support Decision Making Throughout the Product Life Cycle</p> <p>1.5.7. Initiated Studies/Trials and Research Collaborations Investigator</p>	<p><b>1.6. The Medical Affairs Department</b></p> <p>1.6.1. What is the Medical Affairs Department?</p> <p>1.6.1.1. Purpose and Functions of the Department</p> <p>1.6.1.2. General Structure of the Department in Different Companies</p> <p>1.6.1.3. Interactions Between Medical Affairs and Other Departments (Clinical Operations &amp; Commercial Departments)</p> <p>1.6.1.4. The Relationship of Medical Issues in Terms of Product Life Cycle</p>	<p>1.6.2. Creation of State-of-the-Art Data Generation Programs</p> <p>1.6.3. Medical's Co-Leadership Role</p> <p>1.6.4. Affairs in cross-functional pharmaceutical organizations</p>	<p><b>1.7. Roles in The Medical Affairs Department</b></p> <p>1.7.1. Role of the Medical Advisor</p> <p>1.7.2. Functions of the Medical Advisor</p> <p>1.7.3. Participation Tactics with HCP</p> <p>1.7.3.1. <i>Advisory Board</i> and promotion programs</p> <p>1.7.3.2. Scientific Publications</p> <p>1.7.3.3. Planning of Scientific Congresses</p> <p>1.7.4. Elaboration of a Medical Communication Plan</p> <p>1.7.5. Design of Medical Product Strategy</p>
<p>1.7.6. Management of Medical Projects and Studies Based on Real Clinical Practice Data (RWE).</p> <p>1.7.7. Role of the Medical Science Liaison</p> <p>1.7.7.1. MSL Functions: Medical Communication and Interlocutors</p> <p>1.7.7.2. Implementation of Medical Projects and Territorial Management</p> <p>1.7.7.3. Investigator <i>Initiated Studies/Trials and Research Collaborations</i></p> <p>1.7.7.4. Scientific Communication and <i>Insights</i> Gathering</p>	<p><b>1.8. Compliance In the Medical Affairs Department</b></p> <p>1.8.1. Concept of Compliance in the Medical Department</p> <p>1.8.1.1. Promotion of Prescription Drugs</p> <p>1.8.1.2. Interrelation with Health Professionals and Organizations</p> <p>1.8.1.3. Interrelation with Patient Organizations</p> <p>1.8.2. Definition of <i>On Label/Off Label</i></p> <p>1.8.3. Differences Between Commercial Department and Medical Affairs</p> <p>1.8.4. Code of Good Clinical Practice in Medical Promotion and Information</p>	<p><b>1.9. Medical Reports</b></p> <p>1.9.1. Comprehensive Communication Plan</p> <p>1.9.2. Media and Omnichannel Plan</p> <p>1.9.3. Integration of the Communication Plan in the Medical Plan</p> <p>1.9.4. Information Resources in Biomedicine</p> <p>1.9.4.1. International Sources: Pubmed, Embase, WOS, etc</p> <p>1.9.4.2. Sources in Latin America: CSIC, Ibecs, LILACS, Indexes etc.</p> <p>1.9.4.3. Sources for Locating Clinical Trials: WHO, ClinicalTrials, Cochrane CENTRAL, etc.</p>	<p>1.9.4.4. Drug Information Sources: Bot Plus Web, FDA, etc</p> <p>1.9.4.5. Other Resources: Official Bodies, Web Pages, Scientific Societies, Associations, Evaluation Agencies, etc.</p>

**1.10. Pharmacovigilance**

1.10.1. Pharmacovigilance in Clinical Trials

1.10.1.1. BORRAR

1.10.1.2. Adverse Event Management

1.10.2. Notification of Adverse Events, Eudravigilance.

1.10.3. Periodic Security Reports

1.10.4. Pharmacovigilance in Other Clinical Trials: Post-Authorization Studies



*You will learn how to collect and communicate results to improve medical care in the Biotech field"*

06

# Study Methodology

TECH is the world's first university to combine the **case study** methodology with **Relearning**, a 100% online learning system based on guided repetition.

This disruptive pedagogical strategy has been conceived to offer professionals the opportunity to update their knowledge and develop their skills in an intensive and rigorous way. A learning model that places students at the center of the educational process giving them the leading role, adapting to their needs and leaving aside more conventional methodologies.

“

*TECH will prepare you to face new challenges in uncertain environments and achieve success in your career”*



### The student: the priority of all TECH programs

In TECH's study methodology, the student is the main protagonist.

The teaching tools of each program have been selected taking into account the demands of time, availability and academic rigor that, today, not only students demand but also the most competitive positions in the market.

With TECH's asynchronous educational model, it is students who choose the time they dedicate to study, how they decide to establish their routines, and all this from the comfort of the electronic device of their choice. The student will not have to participate in live classes, which in many cases they will not be able to attend. The learning activities will be done when it is convenient for them. They can always decide when and from where they want to study.



*At TECH you will NOT have live classes (which you might not be able to attend)"*



### The most comprehensive study plans at the international level

TECH is distinguished by offering the most complete academic itineraries on the university scene. This comprehensiveness is achieved through the creation of syllabi that not only cover the essential knowledge, but also the most recent innovations in each area.

By being constantly up to date, these programs allow students to keep up with market changes and acquire the skills most valued by employers. In this way, those who complete their studies at TECH receive a comprehensive education that provides them with a notable competitive advantage to further their careers.

And what's more, they will be able to do so from any device, pc, tablet or smartphone.



*TECH's model is asynchronous, so it allows you to study with your pc, tablet or your smartphone wherever you want, whenever you want and for as long as you want"*

### Case Studies and Case Method

The case method has been the learning system most used by the world's best business schools. Developed in 1912 so that law students would not only learn the law based on theoretical content, its function was also to present them with real complex situations. In this way, they could make informed decisions and value judgments about how to resolve them. In 1924, Harvard adopted it as a standard teaching method.

With this teaching model, it is students themselves who build their professional competence through strategies such as Learning by Doing or Design Thinking, used by other renowned institutions such as Yale or Stanford.

This action-oriented method will be applied throughout the entire academic itinerary that the student undertakes with TECH. Students will be confronted with multiple real-life situations and will have to integrate knowledge, research, discuss and defend their ideas and decisions. All this with the premise of answering the question of how they would act when facing specific events of complexity in their daily work.



### Relearning Methodology

At TECH, case studies are enhanced with the best 100% online teaching method: Relearning.

This method breaks with traditional teaching techniques to put the student at the center of the equation, providing the best content in different formats. In this way, it manages to review and reiterate the key concepts of each subject and learn to apply them in a real context.

In the same line, and according to multiple scientific researches, reiteration is the best way to learn. For this reason, TECH offers between 8 and 16 repetitions of each key concept within the same lesson, presented in a different way, with the objective of ensuring that the knowledge is completely consolidated during the study process.

*Relearning will allow you to learn with less effort and better performance, involving you more in your specialization, developing a critical mindset, defending arguments, and contrasting opinions: a direct equation to success.*





### A 100% online Virtual Campus with the best teaching resources

In order to apply its methodology effectively, TECH focuses on providing graduates with teaching materials in different formats: texts, interactive videos, illustrations and knowledge maps, among others. All of them are designed by qualified teachers who focus their work on combining real cases with the resolution of complex situations through simulation, the study of contexts applied to each professional career and learning based on repetition, through audios, presentations, animations, images, etc.

The latest scientific evidence in the field of Neuroscience points to the importance of taking into account the place and context where the content is accessed before starting a new learning process. Being able to adjust these variables in a personalized way helps people to remember and store knowledge in the hippocampus to retain it in the long term. This is a model called Neurocognitive context-dependent e-learning that is consciously applied in this university qualification.

In order to facilitate tutor-student contact as much as possible, you will have a wide range of communication possibilities, both in real time and delayed (internal messaging, telephone answering service, email contact with the technical secretary, chat and videoconferences).

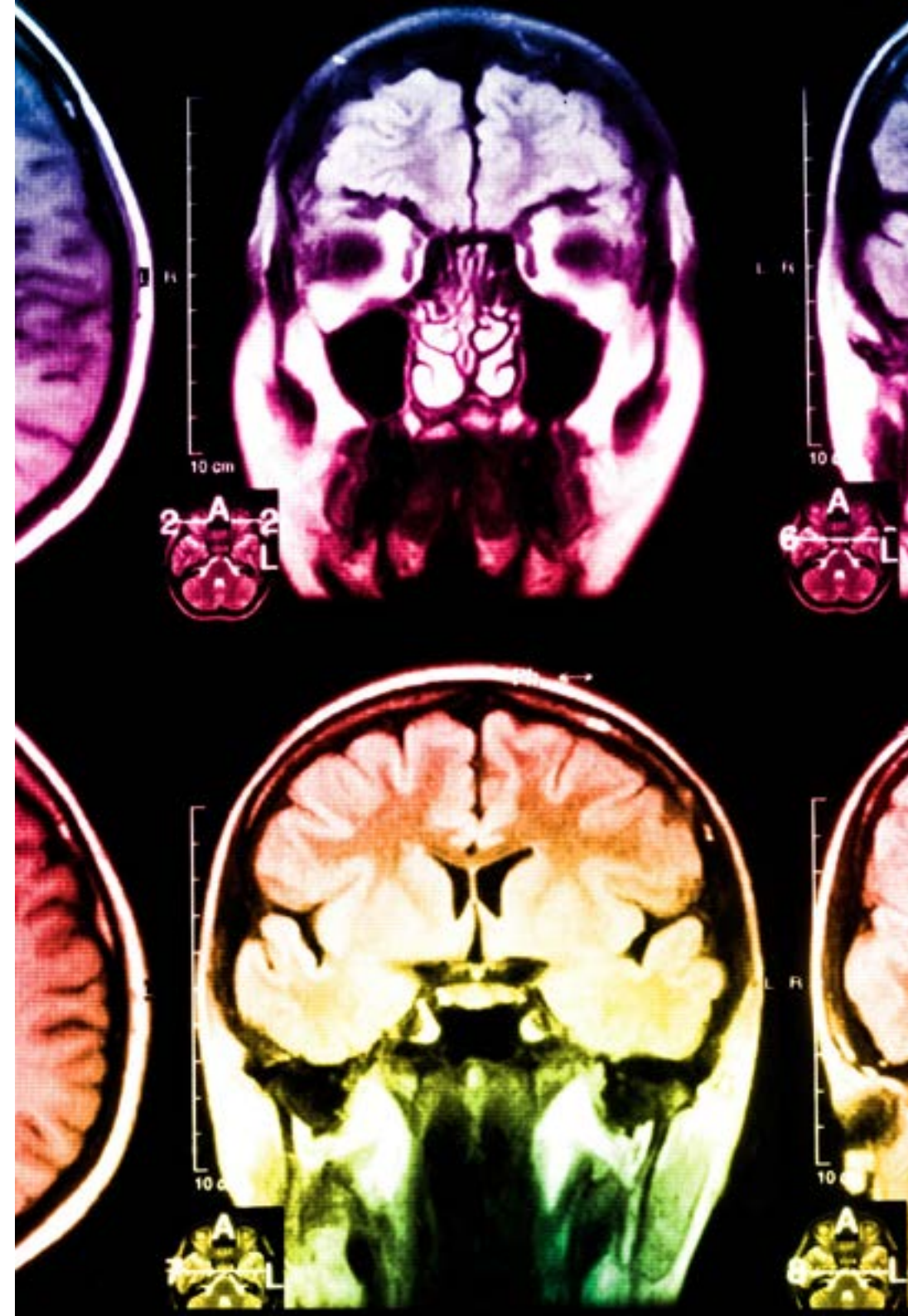
Likewise, this very complete Virtual Campus will allow TECH students to organize their study schedules according to their personal availability or work obligations. In this way, they will have global control of the academic content and teaching tools, based on their fast-paced professional update.

“

*The online study mode of this program will allow you to organize your time and learning pace, adapting it to your schedule”*

#### The effectiveness of the method is justified by four fundamental achievements:

1. Students who follow this method not only achieve the assimilation of concepts, but also a development of their mental capacity, through exercises that assess real situations and the application of knowledge.
2. Learning is solidly translated into practical skills that allow the student to better integrate into the real world.
3. Ideas and concepts are understood more efficiently, given that the example situations are based on real-life.
4. Students like to feel that the effort they put into their studies is worthwhile. This then translates into a greater interest in learning and more time dedicated to working on the course.



### The university methodology top-rated by its students

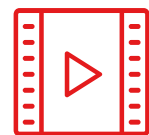
The results of this innovative teaching model can be seen in the overall satisfaction levels of TECH graduates.

The students' assessment of the quality of teaching, quality of materials, course structure and objectives is excellent. Not surprisingly, the institution became the best rated university by its students on the Trustpilot review platform, obtaining a 4.9 out of 5.

*Access the study contents from any device with an Internet connection (computer, tablet, smartphone) thanks to the fact that TECH is at the forefront of technology and teaching.*

*You will be able to learn with the advantages that come with having access to simulated learning environments and the learning by observation approach, that is, Learning from an expert.*

As such, the best educational materials, thoroughly prepared, will be available in this program:



**Study Material**

All teaching material is produced by the specialists who teach the course, specifically for the course, so that the teaching content is highly specific and precise.

This content is then adapted in an audiovisual format that will create our way of working online, with the latest techniques that allow us to offer you high quality in all of the material that we provide you with.



**Practicing Skills and Abilities**

You will carry out activities to develop specific competencies and skills in each thematic field. Exercises and activities to acquire and develop the skills and abilities that a specialist needs to develop within the framework of the globalization we live in.



**Interactive Summaries**

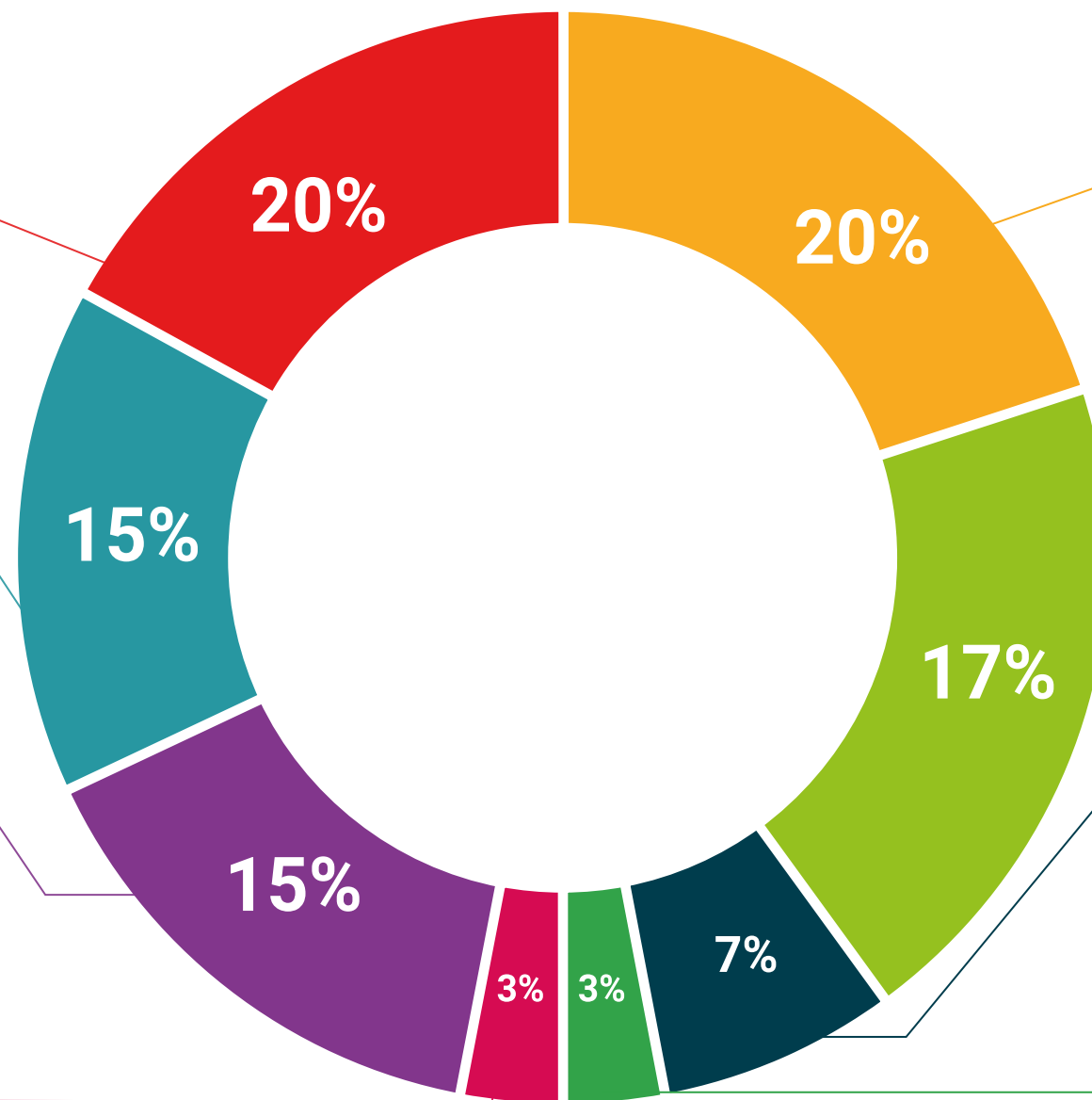
We present the contents attractively and dynamically in multimedia lessons that include audio, videos, images, diagrams, and concept maps in order to reinforce knowledge.

This exclusive educational system for presenting multimedia content was awarded by Microsoft as a "European Success Story".



**Additional Reading**

Recent articles, consensus documents, international guides... In our virtual library you will have access to everything you need to complete your education.



**Case Studies**

Students will complete a selection of the best case studies in the field. Cases that are presented, analyzed, and supervised by the best specialists in the world.



**Testing & Retesting**

We periodically assess and re-assess your knowledge throughout the program. We do this on 3 of the 4 levels of Miller's Pyramid.



**Classes**

There is scientific evidence suggesting that observing third-party experts can be useful. Learning from an expert strengthens knowledge and memory, and generates confidence for future difficult decisions.



**Quick Action Guides**

TECH offers the most relevant contents of the course in the form of worksheets or quick action guides. A synthetic, practical and effective way to help students progress in their learning.



# Our Students' Profiles

The Postgraduate Certificate is aimed at university graduates and postgraduates who have previously completed any of the programs in the fields of Business, Economics, Medicine, Pharmaceuticals, Biology, Chemistry.

This program uses a multidisciplinary approach as the students have a diverse set of academic profiles and represent multiple nationalities.

The Postgraduate Certificate can also be taken by professionals who, being university graduates in any area, have two years of work experience in the medical or pharmaceutical field.

“

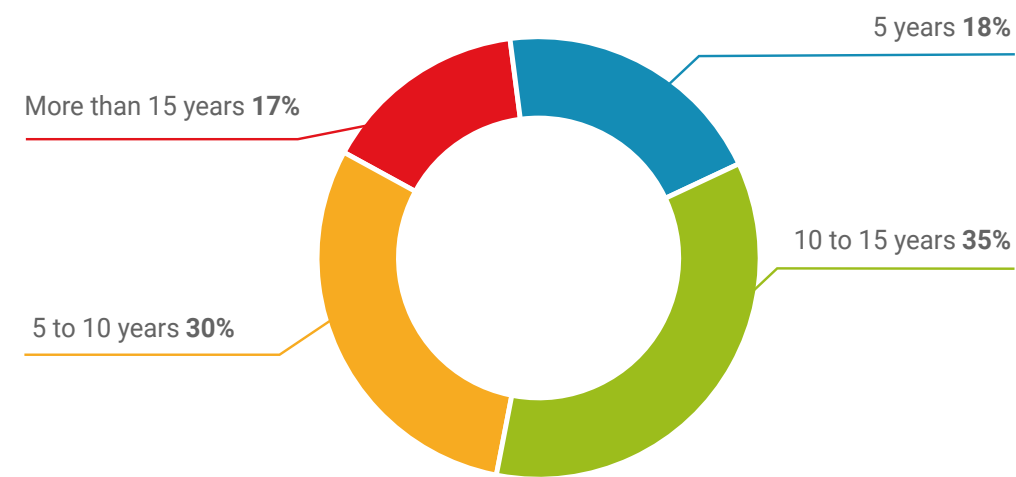
*With the Relearning method you will learn complex concepts with less effort and more performance"*



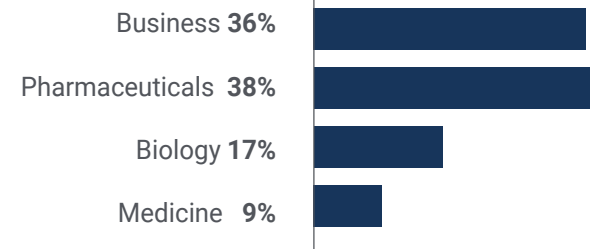
Average Age

Between **35** and **45** years old

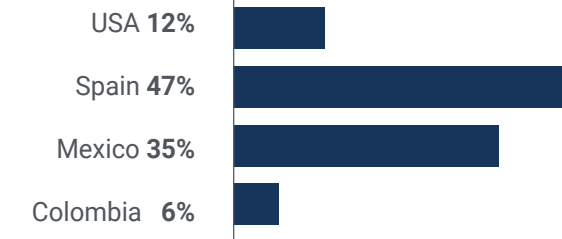
Years of Experience



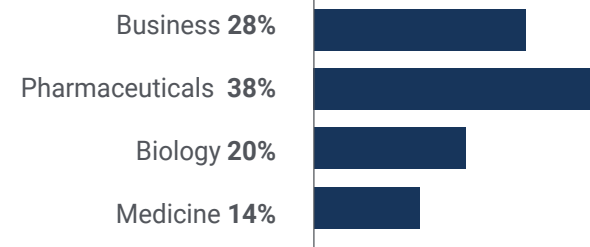
Training



Geographical Distribution



Educational Profile



**Cecilia Russi**

Deputy Director of Medical Projects

*"Today as a graduate, I feel prepared and confident to face professional challenges. The comprehensive education I received and the experiences I had in college have provided me with the necessary tools to stand out in my field and achieve my professional goals"*



08

# Course Management

This program is distinguished for having a team of teachers of excellence that will teach classes from a cutting-edge educational point of view. The professors are recognized specialists in the fields of Pharmaceutical Industry, Medicine and Business, and have extensive work experience. In this way, students will have the guarantee of acquiring quality knowledge directly from outstanding professionals in their respective fields.

“

*You will have the most prestigious teacher and the most complete syllabus in the market with which you will develop skills to design and carry out research studies in the pharmaceutical industry"*

## Management



### Mr. Cardenal Otero, César

- Pharmabiomedical Executive at Amgen
- Author of the book "Personal Brand Communication through Social Networks by Professionals in the Health Sector"
- Degree in Marketing from Prifysgol Cymru University in Wales
- Distinction degree in the course Inspiring Leadership through Emotional Intelligence from Case Western Reserve University
- Postgraduate Degree in Management and Health of the Pharmaceutical Industry from the European University
- Master's Degree in SME Administration from the Polytechnic School of Management
- Specialization in Social Media Marketing from Northwestern University
- University Expert in: International Trade and Transport by the University of Cantabria



## Professors

### Ms. Rodríguez Fernández, Silvia

- Project Manager Scientific Communications at Boehringer Ingelheim Medical Unit
- Senior Scientific Advisor for R&D at Ahead Therapeutics
- Medical Advisor at Ahead Therapeutics
- Product Manager in Amgen's Inflammation Marketing team
- Doctor in Advanced Immunology from the Autonomous University of Barcelona
- MBA from the Pharmaceutical and Biotechnology Industry
- Master's Degree in Advanced Immunology from the Autonomous University of Barcelona
- Degree in Biomedical Sciences from the Autonomous University of Barcelona

“ A unique, key, and decisive learning experience to boost your professional development”



# Impact on Your Career

Pursuing this program will provide the business professional with an exciting and rewarding career, with ample job opportunities, the ability to combine interdisciplinary expertise and a significant impact on public health.



*You will understand how the Medical Advisor and Medical Science Liaison play a crucial role in scientific communication and collaboration with healthcare professionals"*

**Are you ready to take the leap?  
Excellent professional development awaits you.**

TECH's Postgraduate Certificate in Medical Department in Pharma Biotech is an intensive program that prepares you to face challenges and business decisions in the medical and pharmaceutical field. The main objective is to promote your personal and professional growth. Helping you achieve success.

If you want to improve yourself, make a positive change at a professional level, and network with the best, then this is the place for you.

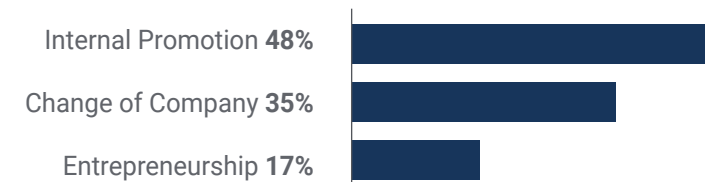
*In just 6 weeks  
you can discover  
specialized resources  
to stay on the cutting  
edge of biomedicine*

*You will ensure  
regulatory compliance  
within the organization  
and understand how  
it differs from the  
commercial department.*

**Time of Change**



**Type of change**



**Salary increase**

This program represents a salary increase of more than **27.19%** for our students





# Benefits for Your Company

Having a business professional in the organization, who also has specific knowledge in Medical Departments, will benefit the company by providing expertise and ensuring regulatory compliance. In this way, it will build strong relationships with healthcare professionals and drive product development and improve medical communication and education. These benefits will contribute to the company's success and competitiveness in the pharmaceutical and biotechnology industry.

“

*You will delve into the field of pharmacovigilance and learn how to manage adverse events in clinical trials"*

Developing and retaining talent in companies is the best long-term investment.

01

### Growth of talent and intellectual capital

The professional will introduce the company to new concepts, strategies, and perspectives that can bring about significant changes in the organization.

---

02

### Retaining high-potential executives to avoid talent drain

This program strengthens the link between the company and the professional and opens new avenues for professional growth within the company.

03

### Building agents of change

You will be able to make decisions in times of uncertainty and crisis, helping the organization overcome obstacles.

---

04

### Increased international expansion possibilities

Thanks to this program, the company will come into contact with the main markets in the world economy.

05

### Project Development

The professional can work on a real project or develop new projects in the field of R & D or business development of your company.

---

06

### Increased competitiveness

This program will equip students with the skills to take on new challenges and drive the organization forward.



11

# Certificate

The Postgraduate Certificate in Medical Department in Pharma Biotech guarantees, in addition to the most accurate and up-to-date education, access to a Postgraduate Certificate issued by TECH Global University.

“

*Successfully complete this program and receive your university qualification without having to travel or fill out laborious paperwork"*

This private qualification will allow you to obtain a **Postgraduate Certificate in Medical Department in Pharma Biotech** endorsed by **TECH Global University**, the world's largest online university.

**TECH Global University** is an official European University publicly recognized by the Government of Andorra ([official bulletin](#)). Andorra is part of the European Higher Education Area (EHEA) since 2003. The EHEA is an initiative promoted by the European Union that aims to organize the international training framework and harmonize the higher education systems of the member countries of this space. The project promotes common values, the implementation of collaborative tools and strengthening its quality assurance mechanisms to enhance collaboration and mobility among students, researchers and academics.

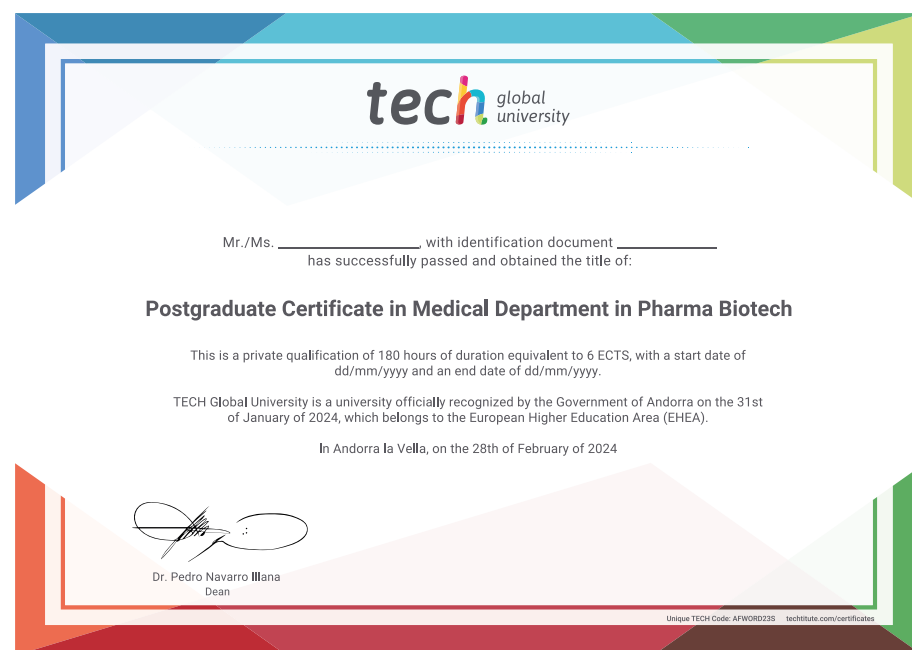
This **TECH Global University** private qualification is a European program of continuing education and professional updating that guarantees the acquisition of competencies in its area of knowledge, providing a high curricular value to the student who completes the program.

Title: **Postgraduate Certificate in Medical Department in Pharma Biotech**

Modality: **online**

Duration: **6 weeks**

Accreditation: **6 ECTS**



## Postgraduate Certificate Medical Department in Pharma Biotech

- » Modality: **online**
- » Duration: **6 weeks**
- » Certificate: **TECH Global University**
- » Accreditation: **6 ECTS**
- » Schedule: **at your own pace**
- » Exams: **online**



# Postgraduate Certificate

## Medical Department in Pharma Biotech