

# Postgraduate Diploma

## Psychosocial Action in Psychotic Disorders



## Postgraduate Diploma Psychosocial Action in Psychotic Disorders

- » Modality: online
- » Duration: 6 months
- » Certificate: TECH Global University
- » Accreditation: 17 ECTS
- » Schedule: at your own pace
- » Exams: online

Website: [www.techtute.com/us/psychology/postgraduate-diploma/postgraduate-diploma-psychosocial-action-psychotic-disorders](http://www.techtute.com/us/psychology/postgraduate-diploma/postgraduate-diploma-psychosocial-action-psychotic-disorders)

# Index

01

Introduction

---

*p. 4*

02

Objectives

---

*p. 8*

03

Course Management

---

*p. 12*

04

Structure and Content

---

*p. 20*

05

Methodology

---

*p. 24*

06

Certificate

---

*p. 32*

01

# Introduction

Psychosocial intervention is fundamental in the treatment of psychotic disorders by offering a comprehensive intervention that addresses both clinical and social aspects of the patient. In fact, by combining therapeutic strategies based on psychotherapy, emotional support and psychosocial rehabilitation, this treatment modality promotes recovery, stability and improvement in the quality of life of affected individuals. In addition, it helps reduce psychotic symptoms, strengthens coping skills, promotes autonomy and favors social integration, thus facilitating the individual's successful reintegration into his or her family, work and community environment. In this context, TECH has developed a comprehensive program to turn psychologists into highly qualified specialists in this field.



Psychos



“

*Update your knowledge in Psychosocial Action in Psychotic Disorders through this complete program, where you will find the best didactic material with real clinical cases”*

Through therapeutic approaches, which integrate both emotional support and the ability to cope with the practical challenges of daily life, Psychosocial Acting promotes the recovery and integral well-being of individuals. Therefore, by providing tools to improve social skills, autonomy and self-esteem, this form of intervention not only helps to manage psychotic symptoms, but also strengthens the adaptive capacity and improves the quality of life of those suffering from psychotic disorders.

This is how this Postgraduate Diploma was created, which will address the intervention from the most relevant models, focusing on the identification and mastery of the clinical and prognosis of personality and psychotic disorders. In addition, the psychologist will be trained to use the specific pharmacological intervention for these disorders and to determine the appropriate moment to involve other professionals in the therapeutic process.

The syllabus will also focus on psychosocial intervention in Psychotic Disorders, emphasizing the importance of discerning between significant problems and the natural evolution in the family context. Skills will also be developed to manage the systemic psychopathology associated with these disorders, allowing a deeper understanding of the family and social dynamics that may influence the course of the illness.

In this way, TECH has designed a curriculum in a 100% online and totally flexible format, which adapts to the needs of professionals. They will only need an electronic device with an Internet connection to access all the contents anywhere and at any time. To this we must add the use of the revolutionary Relearning methodology, consisting of the reiteration of key concepts for an optimal and organic assimilation of knowledge.

On the other hand, this program boasts the participation of a prestigious international specialist in Psychology, who will give a series of exclusive and complementary Masterclasses, with the objective of delving into Psychotic Disorders.

The **Postgraduate Diploma in Psychosocial Action in Psychotic Disorders** contains the most complete and up-to-date scientific program on the market. The most important features include:

- ◆ The development of case studies presented by experts in Psychosocial Action in Psychotic Disorders
- ◆ The graphic, schematic and eminently practical contents with which it is conceived gather scientific and practical information on those disciplines that are indispensable for professional practice
- ◆ Practical exercises where the self-assessment process can be carried out to improve learning
- ◆ Its special emphasis on innovative methodologies
- ◆ Theoretical lessons, questions to the expert, debate forums on controversial topics, and individual reflection assignments
- ◆ Content that is accessible from any fixed or portable device with an Internet connection



*A series of additional Masterclasses will be given by an internationally renowned expert to explain the most appropriate actions to take to care for patients with Psychotic Disorders”*



*You will delve into follow-up models that reflect changes in pathologies related to stress and chronic mental states, providing practical tools for monitoring”*

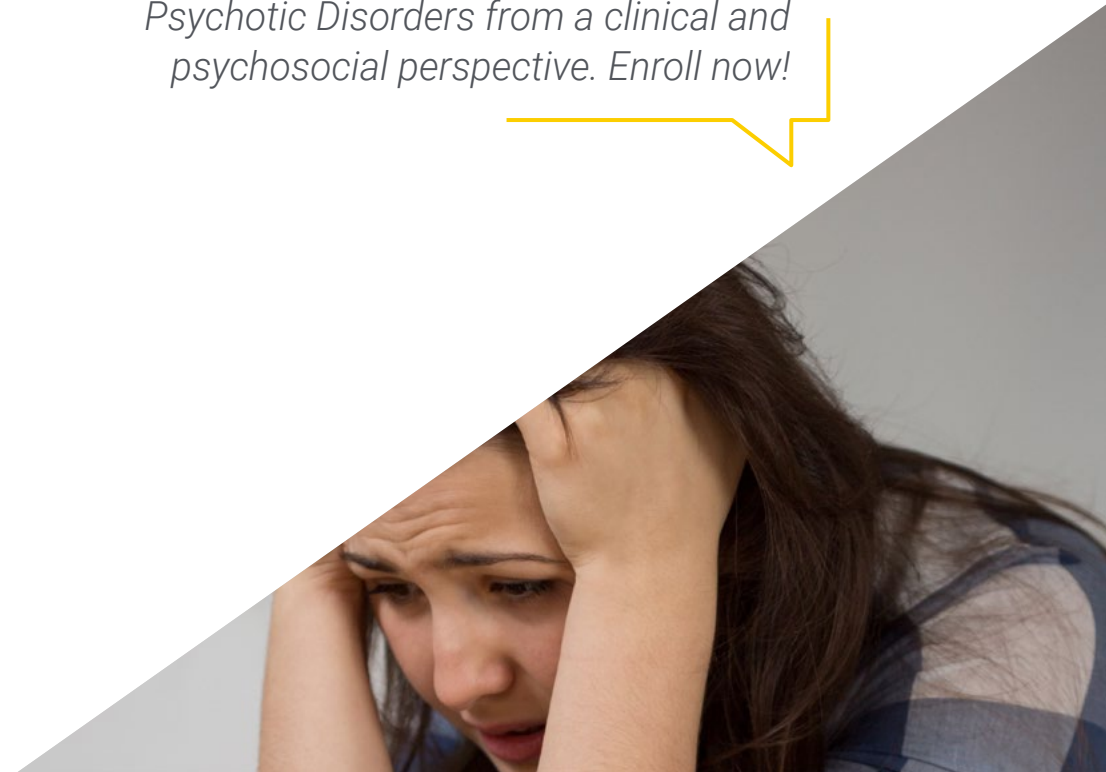
The program’s teaching staff includes professionals from the field who contribute their work experience to this educational program, as well as renowned specialists from leading societies and prestigious universities.

The multimedia content, developed with the latest educational technology, will provide the professional with situated and contextual learning, i.e., a simulated environment that will provide immersive education programmed to learn in real situations.

This program is designed around Problem-Based Learning, whereby the professional must try to solve the different professional practice situations that arise during the course. For this purpose, students will be assisted by an innovative interactive video system created by renowned experts in the field of educational coaching with extensive experience.

*You will focus on mutations and new forms of illness in Personality Disorders, providing a solid foundation for a comprehensive approach to these cases.*

*This 100% online Postgraduate Diploma will provide you with comprehensive training to effectively address Psychotic Disorders from a clinical and psychosocial perspective. Enroll now!*



# 02

# Objectives

The main objective of this Postgraduate Diploma will be to train psychologists with the necessary skills and knowledge to understand, assess and comprehensively address Psychotic Disorders. With an interdisciplinary approach, they will also develop skills to intervene, both at individual, family and community level, to promote recovery, adaptation and improvement in the quality of life of those affected. In addition, they will deepen their understanding of the psychopathology associated with psychotic disorders, creating effective psychosocial intervention strategies and promoting coordination and collaboration with other health professionals in the therapeutic process.







“

*TECH will offer you the best training, with the use of the best didactic materials, at the forefront of technology and education, contributing with quality and safety to decision making in a clinical environment”*



## General Objectives

---

- ♦ Describe the fundamentals of psychodiagnosis of psychotic disorders and personality disorders
- ♦ Perform differential diagnosis between personality disorders and psychotic disorders
- ♦ Describe the different sub-specialties in the field of psychosis and personality disorders
- ♦ Manage the current knowledge of drugs used in psychiatry and neurology
- ♦ Train to achieve the therapist-patient-medication link
- ♦ Identify the absorption properties of medication
- ♦ Develop mastery of the positive and negative symptoms of psychotic disorders
- ♦ Describe in protocols the intervention programs, taking into account the characteristics and specific aspects of these disorders
- ♦ Identify the evolution of the different disorders listed in the DSM-5 or ICD-10
- ♦ Master the fields of medical-psychologist interaction in family intervention
- ♦ Train the professional on all the updated references on the diagnosis, intervention and therapeutic process in order to interact with the medication
- ♦ Describe with decision protocols the individualized study of family members in order to perform a rigorous psychopathological study
- ♦ Use decision trees to make a permanent differential diagnosis
- ♦ Frame all the information within a multidisciplinary framing model in the study of the bio-psychosocial framework of the psychotherapy-pharmacology relationship in psychotic disorders and personality disorders





## Specific Objectives

---

### **Module 1. Intervention in personality disorders and psychotic disorders from the most relevant models**

- ◆ Identify and master the clinical and prognostic features of the different childhood and adolescent disorders with pharmacological intervention due to these disorders
- ◆ Use the intervention to determine when it is necessary for other professionals to join process
- ◆ Developing and understanding mutations and new forms of disease in personality disorders

### **Module 2. Psychosocial Intervention in Psychotic Disorders**

- ◆ Develop knowledge that discriminates an important problem of natural evolution within the process of family coexistence
- ◆ Manage and master the systemic psychopathology that causes these disorders
- ◆ Develop monitoring models that express the changes of stress pathologies and chronic pathological mental states



*Thanks to this comprehensive academic program, you will contribute to the emotional, social and functional well-being of people with Psychotic Disorders, as well as to the promotion of comprehensive and individual-centered care”*



# 03

# Course Management

This program has an outstanding faculty, composed of experts in the field of Psychology. With this, TECH seeks to ensure the highest level of training and adapted to the latest developments in this specialty. In fact, the teaching team has been selected taking into account their experience and relevance in the sector, specializing in the health field and in the management of patients with psychotic and personality disorders. In addition, they are active professionals who are familiar with the latest developments in the psychosocial field.



“

*You will reach your professional goals thanks to the support of the teaching team that TECH has selected to accompany you during the course of this program. What are you waiting for to enroll?"*



## International Guest Director

With a renowned trajectory in the field of **Mental Health**, Kirsten W. Bolton is a professional specialized in the treatment of **Psychotic Disorders and Serious Mental Illnesses**. She has been a member of the team of the **Division of Psychiatric Disorders at McLean Hospital in Belmont, United States**, one of the most prestigious institutions in the field of Psychiatry.

As such, her commitment to the well-being of her patients has propelled her to become the **Director of the Appleton program**, a residential initiative dedicated to the **supervision** of individuals facing **major mental illnesses**. In fact, her focus on **rehabilitation and comprehensive treatment** has proven to be an effective model of care for individuals with **Severe Psychotic Disorders**. She also excels in her role as a **clinical social worker** in the **Schizophrenia and Bipolar Inpatient Program**, where she has excelled in her ability to address complex cases and provide effective therapeutic interventions.

In addition, Kirsten W. Bolton has launched the successful **"McLean OnTrack"** program to address **First Episode Psychosis** in young adults. This innovative project has been instrumental in the **early diagnosis and treatment** of young adults experiencing their first onset of **Bipolar Disorders** and the **Schizophrenia** spectrum. In addition, it has become a highly effective multidisciplinary referral, which has benefited hundreds of patients and their families.

It is worth mentioning his participation in the **International Certification Training Program in Dialogic Practice**, becoming part of an exclusive group of specialists with advanced training in this **therapeutic approach**. Due to all of the above, it is clear that her commitment to excellence in the **treatment of psychotic disorders**, as well as her extensive **clinical experience**, have consolidated her reputation as one of the most respected leaders in this field.



## Ms. Bolton, Kirsten W.

---

- ♦ Director of the Appleton Program at McLean Hospital, Belmont, United States
- ♦ Psychologist in the Division of Psychotic Disorders, at McLean Hospital
- ♦ Clinical Social Worker in the Inpatient Program for Schizophrenia and Bipolar Disorder
- ♦ International Training Program in Dialogical Practice
- ♦ Master's Degree in Social Work at Simmons College
- ♦ Bachelor's Degree in Psychology from Simmons College

“

*Thanks to TECH, you will be able to learn with the best professionals in the world”*

## International Guest Director

With an extensive background in Psychology, Matthias Schwannauer has been noted for his research on psychological interventions for Bipolar Disorders. This work included the implementation of a randomized controlled trial of Interpersonal Cognitive Therapy and a study on the role of interpersonal and cognitive factors in mood regulation in bipolar disorders and the recovery process.

After graduating in Philosophy and Psychology from the University of Marburg, he worked as a Clinical Psychologist in the NHS Adolescent Mental Health Services in Glasgow. He has also been Head of Clinical and Health Psychology and Director of the Doctoral Program in Clinical Psychology at the University of Edinburgh. In addition, he has worked as a Clinical Psychologist in the Early Psychosis Support Service at CAMHS Lothian. Subsequently, he has held the position of Director of the School of Health and Social Sciences at the University of Edinburgh.

In particular, Matthias Schwannauer has led the Contextual Mental Health Research Group, which focuses on studying the evolutionary trajectories of mental health and well-being across the lifespan. He has also focused on investigating the development of psychological models of emotional distress. One of his main areas of interest is the advancement of specific psychological interventions for the mental health of young people.

Moreover, he is principal investigator of several randomized controlled trials to develop and evaluate psychological interventions for serious mental health problems. In addition, he has published numerous scientific articles. His research interests include the application of attachment theory, reflective function and recovery to major mental health problems in adolescence, particularly psychosis and recurrent mood disorders.



## Dr. Schwannauer, Matthias

---

- ♦ Director of the School of Health and Social Sciences, University of Edinburgh, Scotland
- ♦ Consultant Clinical Psychologist in the Early Psychosis Support Service at CAMHS Lothian
- ♦ Clinical Psychologist in the NHS Adolescent Mental Health Services
- ♦ Director of the Doctoral Program in Clinical Psychology at the University of Edinburgh
- ♦ Head of Clinical and Health Psychology at the University of Edinburgh
- ♦ Doctorate in Clinical Psychology from the University of Edinburgh
- ♦ Bachelor of Arts in Philosophy and Psychology from the University of Marburg

“

*Thanks to TECH you will be able to learn with the best professionals in the world"*

## Management



### **Dr. Segovia Garrido, Domingo**

- ♦ Director of the Tinte23 Psychology Center
- ♦ General Health Psychologist at the European Institute of Limited Time Psychotherapies (IEPTL)
- ♦ Psychologist at the Mentas Abiertas Association of La Roda
- ♦ President of the LASSUS Association for Help against Depressive Syndrome
- ♦ Psychologist of the LASSUS Association of Help against Depressive Syndrome
- ♦ Degree in Psychology from the University of Murcia
- ♦ Master's Degree in Occupational Risk Prevention
- ♦ Master's Degree in Integrated Systems Management
- ♦ Master's Degree in Clinical and Health Psychology





04

# Structure and Content

The Postgraduate Diploma in Psychosocial Action in Psychotic Disorders will cover content to provide psychologists with the necessary tools to understand, assess and effectively treat these disorders. Therefore, this program will include key aspects such as a deep understanding of the psychopathology associated with these disorders, the early identification of symptoms and signs, as well as the application of evidence-based psychosocial interventions. In addition, it will address the importance of working with the affected individual, as well as their family and social environments, promoting recovery, autonomy and community integration.

A 3D rendering of a filing cabinet with several folders. The top folder is labeled 'DISORDERS' in large, bold, black capital letters. Below it, another folder is partially visible, labeled 'DEPRE' in similar bold, black capital letters. The cabinet is light gray with a metallic finish. The background is white with a large, diagonal, magenta-colored shape on the left side. The overall image has a clean, modern aesthetic.

OLAR

DEPRE





“

*You will develop prevention strategies, manage stress and perform long-term follow-ups, all to improve the quality of life and well-being of people with Psychotic Disorders”*

## Module 1. Intervention in Personality and Psychotic Disorders From the Most Relevant Models

- 1.1. Behavioral Therapy in Personality and Psychotic Disorders
- 1.2. Cognitive Therapy in Personality and Psychotic Disorders
- 1.3. Rational Emotive Behavior Therapy in Personality and Psychotic Disorders
- 1.4. Stress Management Therapy in Personality and Psychotic Disorders
- 1.5. Beck's Cognitive Therapy in Personality and Psychotic Disorders
- 1.6. Lesson in Cognitive Video Therapies
- 1.7. Human Therapies in Personality and Psychotic Disorders
- 1.8. Gestalt Therapy and Psychodynamic Therapies in Personality and Psychotic Disorders
- 1.9. Interpersonal Therapy in Personality and Psychotic Disorders
- 1.10. Lesson in Humanist Video Therapies
- 1.11. Time-Limited Psychotherapy (Eclectic Psychotherapy) in Personality and Psychotic Disorders
- 1.12. Clinical Cases

## Module 2. Psychosocial Intervention in Psychotic Disorders

- 2.1. Family Mediation
  - 2.1.1. Pre-Mediation
  - 2.1.2. Negotiation
  - 2.1.3. Mediation
    - 2.1.3.1. Reconciliation
    - 2.1.3.2. Reparation
- 2.2. Notion of Conflict
  - 2.2.1. Changing the Attitude Towards Team Cooperation
  - 2.2.2. Improve Attitude
  - 2.2.3. Emphasizing Performance
- 2.3. Types of Conflict
  - 2.3.1. Attraction-Attraction
  - 2.3.2. Evasion-Evasion
  - 2.3.3. Attraction-Evasion



- 2.4. Mediation, Arbitration and Neutral Evaluation
  - 2.4.1. Mediator is Present, Does Not Have an Influence
  - 2.4.2. Arbitration Makes Decisions by Listening to the Parties
  - 2.4.3. Neutral Evaluation Draw Consequences From the Data Obtained
- 2.5. Coaching and Psychology
  - 2.5.1. Equalities
  - 2.5.2. Differences
  - 2.5.3. Contradictions
  - 2.5.4. Impersonation
- 2.6. Learning in Coaching
  - 2.6.1. Declaring Bankruptcy
  - 2.6.2. Stripping Off the Masks
  - 2.6.3. Re-Engineering Ourselves
  - 2.6.4. Focusing on the Task
- 2.7. Facing Challenges that Can Be Taken on
  - 2.7.1. Locus of Control
  - 2.7.2. Expectations
- 2.8. Focused on the Activity
  - 2.8.1. Focusing Techniques
  - 2.8.2. Thought Control techniques
- 2.9. Clear Goals
  - 2.9.1. Definition of Where We Are
  - 2.9.2. Definition of Where We Want to Go
- 2.10. Feeding Back on the Activity
  - 2.10.1. Placing the Attitude in Action and Not in Anticipatory Thinking
  - 2.10.2. Verbalizing Small Achievements
  - 2.10.3. Being Flexible and Allow for Frustration
- 2.11. Working on Self-Deception
  - 2.11.1. Knowing that We Are Lying to Ourselves
  - 2.11.2. Knowing that We Modify Reality
  - 2.11.3. Knowing that We Conform Reality to Our Beliefs

- 2.12. Conflict Management
  - 2.12.1. Emotional Management
  - 2.12.2. Saying What I Think, but From HOME Emotions
- 2.13. Dialogue With Beliefs
  - 2.13.1. Self-Dialogue
  - 2.13.2. Cognitive Restructuring
- 2.14. Managing Stress
  - 2.14.1. Breathing Techniques
  - 2.14.2. Emotional Management Techniques
  - 2.14.3. Relaxation Techniques
- 2.15. Emotional Management
  - 2.15.1. Identifying Emotions
  - 2.15.2. Identifying Suitable Emotions
  - 2.15.3. Changing Emotions for Others
- 2.16. Biology of the Stress Response
- 2.17. Biochemistry of Stress



*You will explore topics related to psychosocial rehabilitation, relapse prevention, crisis management, and promoting long-term recovery, all through an extensive library of multimedia resources”*



05

# Methodology

This academic program offers students a different way of learning. Our methodology uses a cyclical learning approach: **Relearning**.

This teaching system is used, for example, in the most prestigious medical schools in the world, and major publications such as the **New England Journal of Medicine** have considered it to be one of the most effective.



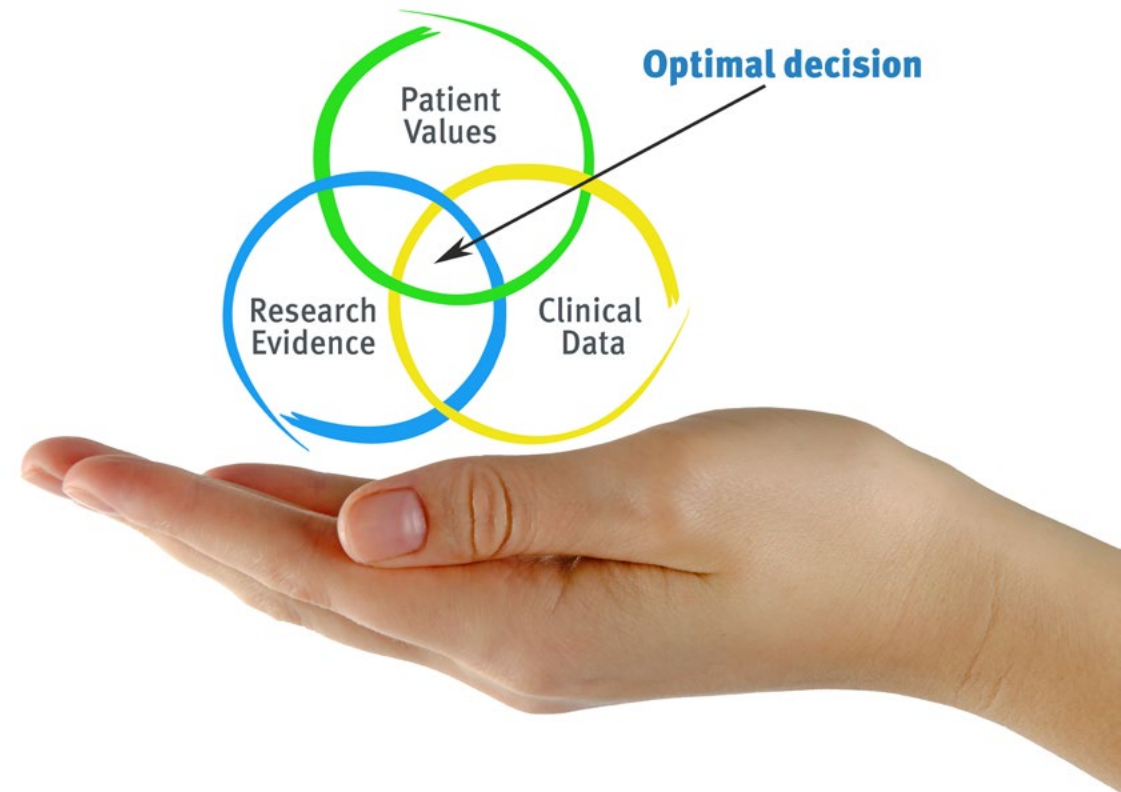
“

*Discover Relearning, a system that abandons conventional linear learning, to take you through cyclical teaching systems: a way of learning that has proven to be extremely effective, especially in subjects that require memorization"*

## At TECH we use the Case Method

What should a professional do in a given situation? Throughout the program, students will face multiple simulated clinical cases, based on real patients, in which they will have to do research, establish hypotheses, and ultimately resolve the situation. There is an abundance of scientific evidence on the effectiveness of the method. Specialists learn better, faster, and more sustainably over time.

*With TECH the psychologist experiences a way of learning that is shaking the foundations of traditional universities around the world.*



According to Dr. Gérvas, the clinical case is the annotated presentation of a patient, or group of patients, which becomes a "case", an example or model that illustrates some peculiar clinical component, either because of its teaching power or because of its uniqueness or rarity. It is essential that the case is based on current professional life, trying to recreate the real conditions in the psychologist's professional practice.



“

*Did you know that this method was developed in 1912, at Harvard, for law students? The case method consisted of presenting students with real-life, complex situations for them to make decisions and justify their decisions on how to solve them. In 1924, Harvard adopted it as a standard teaching method”*

The effectiveness of the method is justified by four fundamental achievements:

1. Psychologists who follow this method not only master the assimilation of concepts, but also develop their mental capacity by means of exercises to evaluate real situations and apply their knowledge.
2. Learning is solidly translated into practical skills that allow the psychologist to better integrate knowledge into clinical practice.
3. Ideas and concepts are understood more efficiently, given that the example situations are based on real-life.
4. Students like to feel that the effort they put into their studies is worthwhile. This then translates into a greater interest in learning and more time dedicated to working on the course.



## Relearning Methodology

At TECH we enhance the case method with the best 100% online teaching methodology available: Relearning.

Our university is the first in the world to combine the study of clinical cases with a 100% online learning system based on repetition, combining a minimum of 8 different elements in each lesson, which is a real revolution compared to the simple study and analysis of cases.

*The psychologist will learn through real cases and by solving complex situations in simulated learning environments. These simulations are developed using state-of-the-art software to facilitate immersive learning.*





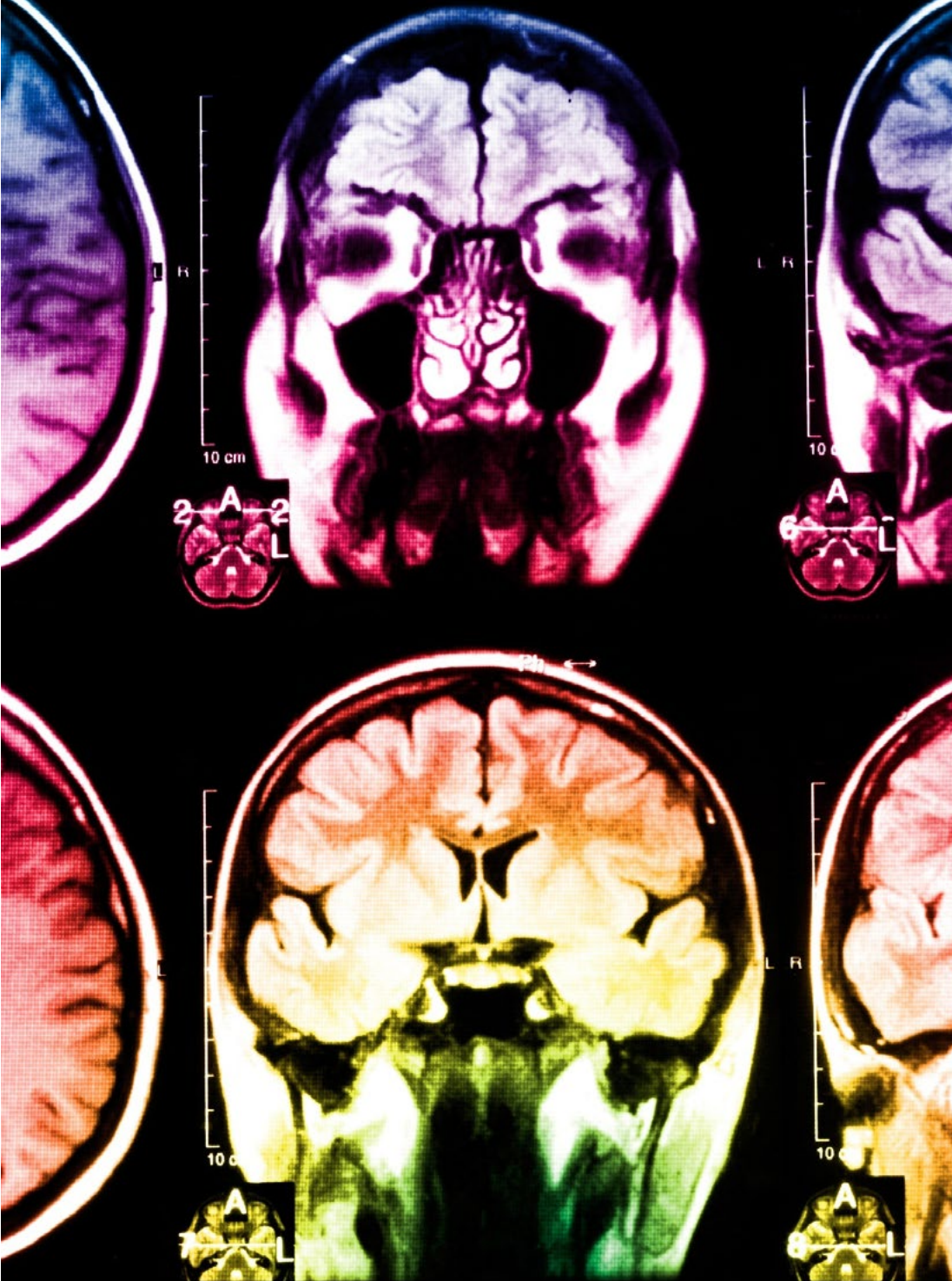
At the forefront of world teaching, the Relearning method has managed to improve the overall satisfaction levels of professionals who complete their studies, with respect to the quality indicators of the best online university (Columbia University).

This methodology has trained more than 150,000 psychologists with unprecedented success in all clinical specialties. Our pedagogical methodology is developed in a highly competitive environment, with a university student body with a strong socioeconomic profile and an average age of 43.5 years old.

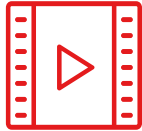
*Relearning will allow you to learn with less effort and better performance, involving you more in your training, developing a critical mindset, defending arguments, and contrasting opinions: a direct equation for success.*

In our program, learning is not a linear process, but rather a spiral (learn, unlearn, forget, and re-learn). Therefore, we combine each of these elements concentrically.

The overall score obtained by our learning system is 8.01, according to the highest international standards.



This program offers the best educational material, prepared with professionals in mind:



### Study Material

All teaching material is produced by the specialists who teach the course, specifically for the course, so that the teaching content is highly specific and precise.

These contents are then applied to the audiovisual format, to create the TECH online working method. All this, with the latest techniques that offer high quality pieces in each and every one of the materials that are made available to the student.



### Latest Techniques and Procedures on Video

TECH introduces students to the latest techniques, to the latest educational advances, to the forefront of current psychology. All of this in direct contact with students and explained in detail so as to aid their assimilation and understanding. And best of all, you can watch the videos as many times as you like.



### Interactive Summaries

The TECH team presents the contents attractively and dynamically in multimedia lessons that include audio, videos, images, diagrams, and concept maps in order to reinforce knowledge.

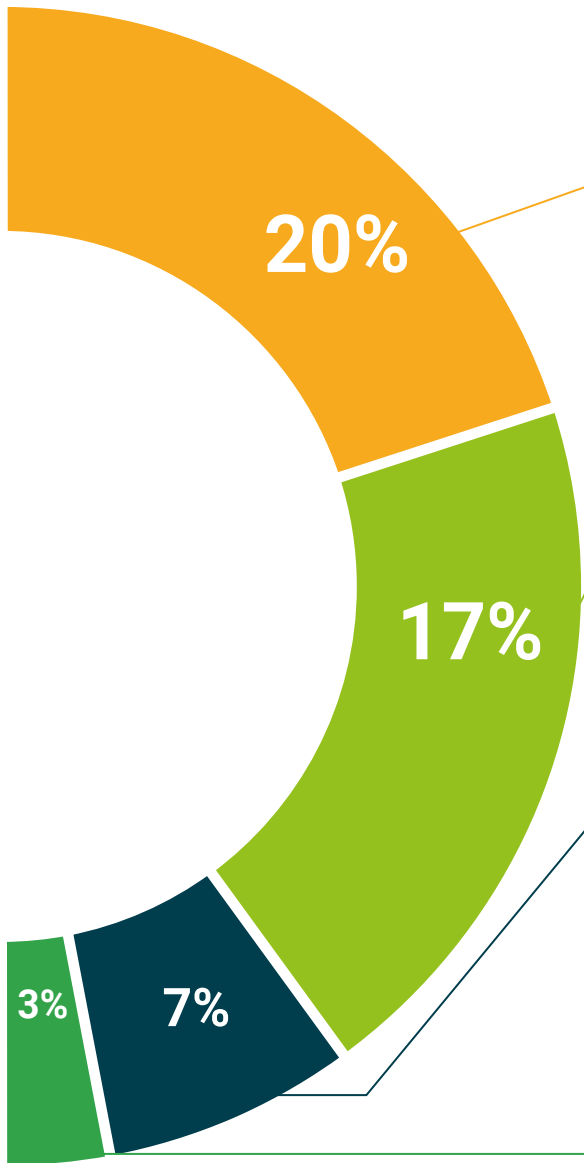
This exclusive educational system for presenting multimedia content was awarded by Microsoft as a "European Success Story".



### Additional Reading

Recent articles, consensus documents and international guidelines, among others. In TECH's virtual library, students will have access to everything they need to complete their course.





**Expert-Led Case Studies and Case Analysis**

Effective learning ought to be contextual. Therefore, TECH presents real cases in which the expert will guide students, focusing on and solving the different situations: a clear and direct way to achieve the highest degree of understanding.



**Testing & Retesting**

We periodically evaluate and re-evaluate students' knowledge throughout the program, through assessment and self-assessment activities and exercises, so that they can see how they are achieving their goals.



**Classes**

There is scientific evidence suggesting that observing third-party experts can be useful.  
Learning from an Expert strengthens knowledge and memory, and generates confidence in future difficult decisions.



**Quick Action Guides**

TECH offers the most relevant contents of the course in the form of worksheets or quick action guides. A synthetic, practical, and effective way to help students progress in their learning.





06

# Certificate

The Postgraduate Diploma in Psychosocial Action in Psychotic Disorders guarantees students, in addition to the most rigorous and up-to-date education program, access to a Postgraduate Diploma issued by TECH Global University.





*Successfully complete this program and receive your university qualification without having to travel or fill out laborious paperwork"*

This private qualification will allow you to obtain a **Postgraduate Diploma in Psychosocial Action in Psychotic Disorders** endorsed by **TECH Global University**, the world's largest online university.

**TECH Global University** is an official European University publicly recognized by the Government of Andorra ([official bulletin](#)). Andorra is part of the European Higher Education Area (EHEA) since 2003. The EHEA is an initiative promoted by the European Union that aims to organize the international training framework and harmonize the higher education systems of the member countries of this space. The project promotes common values, the implementation of collaborative tools and strengthening its quality assurance mechanisms to enhance collaboration and mobility among students, researchers and academics.

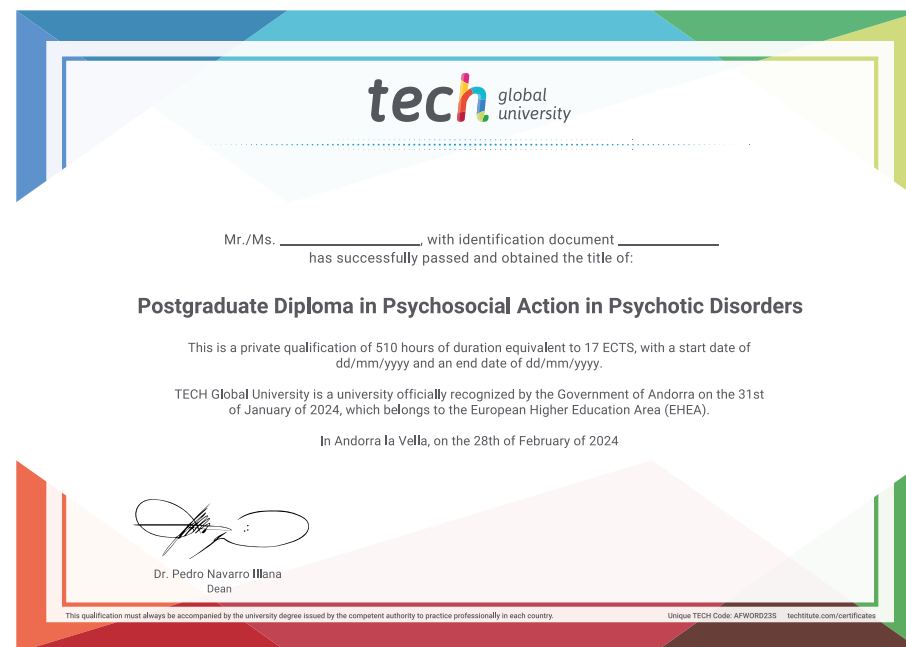
This **TECH Global University** private qualification is a European program of continuing education and professional updating that guarantees the acquisition of competencies in its area of knowledge, providing a high curricular value to the student who completes the program.

Title: **Postgraduate Diploma in Psychosocial Action in Psychotic Disorders**

Modality: **online**

Duration: **6 months**

Accreditation: **17 ECTS**



\*Apostille Convention. In the event that the student wishes to have their paper diploma issued with an apostille, TECH Global University will make the necessary arrangements to obtain it, at an additional cost.



future  
health confidence people  
education information tutors  
guarantee accreditation teaching  
institutions technology learning  
community commitment  
personalized service innovation  
knowledge present  
development language  
classroom



## Postgraduate Diploma Psychosocial Action in Psychotic Disorders

- » Modality: **online**
- » Duration: **6 months**
- » Certificate: **TECH Global University**
- » Accreditation: **17 ECTS**
- » Schedule: **at your own pace**
- » Exams: **online**

# Postgraduate Diploma

## Psychosocial Action in Psychotic Disorders

