

Postgraduate Certificate Psychotic Psychopathology





Postgraduate Certificate Psychotic Psychopathology

- » Modality: online
- » Duration: 6 weeks
- » Certificate: TECH Technological University
- » Dedication: 16h/week
- » Schedule: at your own pace
- » Exams: online

Website: www.techtitute.com/pk/psychology/postgraduate-certificate/psychotic-psychopathology

Index

01

Introduction

p. 4

02

Objectives

p. 8

03

Course Management

p. 12

04

Structure and Content

p. 16

05

Methodology

p. 22

06

Certificate

p. 30

01

Introduction

It is clear that the predominant symptom in these chronic patients is impaired social performance. Therefore, psychosocial care of schizophrenic patients is of fundamental importance, since most of them have to learn or relearn social and personal skills in order to survive in the community.



“

This Postgraduate Certificate is unique in that it presents a whole arsenal of technology that the psychologist can offer to Psychotic and Personality Disorders Always within a multidisciplinary environment, combining psychological and social intervention with pharmacotherapy”

It is not easy or quick to establish a differential diagnosis of Personality Disorders with specific psychiatric diseases. Detecting this alteration in medical practice is of utmost importance. In most patients the abnormal features become apparent as early as childhood and adolescence, and remain hidden or ignored until adulthood. Personality traits are considered abnormal only to the extent that they are conflicting for the subject or society. Undoubtedly, the most frequent additional diagnosis in subjects with personality disorders is depression (or affective disorders). An important trend in current psychopathological research is the description of Personality Disorders in terms that allow for a reliable differential diagnosis.

The term schizophrenia was introduced by Bleuler in 1911, who considered it more appropriate to emphasize the splitting that occurs in the association of ideas, emotions and contact with reality and social life. Today schizophrenia is still one of the greatest challenges of science, affecting, as is well known, about 1% of the population. Much progress has been made in the knowledge of this disease (or diseases), but if we analyze what is currently known and what is ignored, we could conclude that we know more and more, but we continue to ignore many of the enigmas of this or these diseases.

It is clear that the predominant symptom in these chronic patients is impaired social performance. Therefore, psychosocial care of schizophrenic patients is of fundamental importance, since most of them have to learn or relearn social and personal skills in order to survive in the community. Neuroleptics cannot teach the patient to develop vital and defensive resources nor can they improve a person's quality of life, except indirectly through their effect on cognitive disorganization and suppression of positive symptoms.

There is still a huge gap between our knowledge of certain mental illnesses and our knowledge of personality disorders. That is so, in part, because these appear to be quantitative rather than qualitative variants of the person. However, some personality disorders classically considered to be character-dependent (e.g., depressive, anxious, etc.) have actually been shown to be subsyndromal forms of specific diseases. Most patients tend to show behaviors (and problems) suggestive of a personality disorder, which may make the clinician forget syndromes unrelated to personality.

This **Postgraduate Certificate in Psychotic Psychopathology** contains the most complete and up-to-date scientific program on the market. The most important features of the course are:

- ♦ Clinical cases presented by experts in the different specialties. The graphic, schematic, and eminently practical contents with which they are created provide scientific and practical information on the disciplines that are essential for professional practice.
- ♦ The latest diagnostic and therapeutic information on how to approach Psychotic Psychopathology.
- ♦ Algorithm-based interactive learning system for decision-making in the presented clinical situations.
- ♦ With special emphasis on evidence-based psychology and research methodologies in Psychology.
- ♦ All of this will be complemented by theoretical lessons, questions to the expert, debate forums on controversial topics, and individual reflection assignments..
- ♦ Content that is accessible from any fixed or portable device with an Internet connection.



Expand your knowledge through the Postgraduate Certificate in Psychotic Psychopathology adapted to your needs”

“

This course may be the best investment you can make when choosing a refresher program for two reasons: in addition to updating your knowledge in Psychotic Psychopathology, you will obtain a Postgraduate Certificate from TECH Technological University"

Forming part of the teaching staff is a group of professionals in the world of Psychotic Psychopathology who bring to this training their work experience, as well as a group of renowned specialists, recognised by esteemed scientific communities.

The multimedia content developed with the latest educational technology will provide the professional with situated and contextual learning, i.e., a simulated environment that will provide immersive training program to train in real situations.

This program is designed around Problem Based Learning, whereby the physician must try to solve the different professional practice situations that arise during the course. For this reason, you will be assisted by an innovative, interactive video system created by renowned and experienced experts in the field of Psychotic Psychopathology with extensive teaching experience.

The course includes real clinical cases and exercises to bring the course closer to the psychologist's clinical practice



02

Objectives

The program's primary objective is focused on theoretical and practical learning, so that the psychologist is able to master, in both a practical and rigorous manner, psychotic psychopathology.



“

This updating program will provide you with a sense of confidence in the practice of psychology, which will help you grow both personally and professionally”



General Objectives

- ♦ Describe the fundamentals of psychodiagnosis of psychotic disorders and personality disorders.
- ♦ Perform differential diagnosis between personality disorders and psychotic disorders.
- ♦ Describe the different subspecialties in the field of psychosis and personality disorders,
- ♦ Manage the current knowledge of drugs used in psychiatry and neurology.
- ♦ Training to achieve the therapist-patient-medication link.
- ♦ Identify the absorption properties of drugs.
- ♦ Develop mastery of the positive and negative symptoms of psychotic disorders.
- ♦ Describe in protocols the intervention programs, taking into account the characteristics and specific aspects of these disorders.
- ♦ Identify the evolution of the different disorders listed in the DSM-5 or ICD-10.
- ♦ Master the fields of medical-psychologist interaction in family intervention.



Seize the opportunity and take the step to get up to date on the latest developments in Tools Used in the Diagnosis of Psychotic and Personality Disorders"





Specific learning objectives of each module:

- ♦ Manage the clinical practice stage of the patient, as well as to provide the necessary skills to work multidisciplinary.
- ♦ Identify and make decisions about patients taking into account the social and emotional environment in which they find themselves.
- ♦ Master the course within a framework of intervention in psychotic disorders and personality disorders.
- ♦ Performing and adapting intervention protocols psychological within an interdisciplinary framework.
- ♦ Addressing the clinical use of the drug.
- ♦ Manage the therapy time dynamic.
- ♦ Employ knowledge about the side effects of drugs so that they do not disable psychotherapy intervention with psychotic disorders.
- ♦ Management of emotional crises with psychotropic drugs in these diseases.
- ♦ Developing and understanding mutations and new forms of disease in personality disorders.
- ♦ Develop the knowledge to identify an important problem of natural evolution within the process of a family home.
- ♦ Manage and master the systemic psychopathology that causes these disorders.
- ♦ Develop monitoring models that express the changes of stress pathologies and chronic pathological mental states.



03

Course Management

This program includes highly regarded health professionals in the field of psychology in its teaching staff, who bring the experience of their work to this training.

In addition, renowned specialists, members of prestigious national and international scientific communities, are involved in designing and preparing the program.



“

*Learn the latest advances in Tools Used in the
Diagnosis of Psychotic and Personality Disorders”*

Management



Segovia Garrido, Domingo.

- Degree in Psychology. Murcia University. 1994-1999
- Master's Degree in Occupational Hazard Prevention F.E.C.M.E.S. 2003.
- Master's Degree in Integrated Systems Management. FEDA. 2005
- Master's Degree in Clinical and Health Psychology. ISEP. 2004-05.
- Psychologist at LASSUS Association for help against Depressive Syndrome. 2003-2012.
- Former President of the LASSUS Association for help against Depressive Syndrome. 2006-2010.
- Director-Psychologist of the Tinte23 Psychology Center. Since 2014.
- Psychologist at Asociación Mentes Abiertas of La Roda (Association that works with family members and people with severe mental illness). Since 2015.

Coordinator



Aguado Romo, Roberto.

- Psychologist specialized in clinical psychology.
- European specialist psychologist in psychotherapy.
- Managing Director of the evaluation and psychotherapy centers in Madrid, Bilbao, and Talavera de la Reina.
- Author of Time-Limited Psychotherapy
- Researcher at CerNet, Emotional Network, and European Institute for Time-Limited Psychotherapies.

Professors

De Dios González, Antonio.

- ♦ Director of Avatar Psychologists.
- ♦ Head of Psychology Department in Quirón Hospital in Marbella.
- ♦ Master's degree in Time-Limited Psychotherapy and Health Psychology by the European Institute of Time-Limited Psychotherapy.
- ♦ Transpersonal Therapist of the Spanish School of Transpersonal Development.
- ♦ Specialist in E.F.T. by the World Center for EFT.
- ♦ Master's Degree in Neuro-Linguistic Programming (N.L.P.) from Richard Bandler's Society of Neuro-Linguistic Programming.
- ♦ Specialist in Clinical Hypnosis and Relaxation.

González, Mónica.

- ♦ Psychologist in charge of the Department of Child and Adolescent Psychology of the Quirón Hospital and Avatar Psychologists in Marbella.
- ♦ Master's degree in Time-Limited Psychotherapy and Health Psychology by the European Institute of Time-Limited Psychotherapy.

Martínez-Lorca, Manuela.

- ♦ Doctorate in Psychology from the University of Castilla-La Mancha.
- ♦ Health Psychologist.
- ♦ Lecturer in the Department of Psychology at the UCLM.
- ♦ Master's degree in Time-Limited Psychotherapy and Health Psychology by the European Institute of Time-Limited Psychotherapy.
- ♦ Specialist in Clinical Hypnosis and Relaxation.

Roldán, Lucía.

- ♦ Health Psychologist
- ♦ Cognitive-behavioral intervention specialist.
- ♦ Master's Degree in Time-Limited Psychotherapy and Health Psychology.
- ♦ Expert in energy therapy intervention.

04

Structure and Content

The structure of the contents has been designed by a team of professionals knowledgeable about the implications of training in daily medical practice of tools used in the diagnosis of psychotic and personality disorders, aware of the relevance of today training in order to be able to act before the patient with psychotic and personality disorders with quality teaching through new educational technologies.



“

This Postgraduate Certificate in Psychotic Psychopathology contains the most complete and up-to-date scientific program on the market”

Module 1. Psychotic Psychopathology

- 1.1. Schizophrenia.
 - 1.1.1. Comorbidity
 - 1.1.2. Etiopathogenesis.
 - 1.1.3. Genetics
 - 1.1.4. Biochemist
 - 1.1.5. Neurophysiology
 - 1.1.6. Neuroanatomy
 - 1.1.7. Evolution and Prognosis
 - 1.1.8. Predisposition.
 - 1.1.9. Psychological Treatment for Schizophrenia.
 - 1.1.9.1. Psychosocial Intervention
 - 1.1.9.2. Psychosocial Rehabilitation.
 - 1.1.9.2.1. Rehabilitative Psychosocial Interventions
 - 1.1.9.2.2. Assistential Devices
 - 1.1.10. Diagnostic Criteria dsm v for Schizophrenia 295.90 (F20.9) .
- 1.2. Schizophreniform Disorder
 - 1.2.1. Diagnostic Criteria dsm v for Schizophreniform Disorder 295.40 (F20.81).
- 1.3. Schizoaffective Disorder.
 - 1.3.1. Diagnostic Criteria dsm v for Schizoaffective Disorder
- 1.4. Delusional Disorder.
 - 1.4.1. Diagnostic Criteria dsm v for Delusional Disorder 297.1 (F22)
- 1.5. Brief Psychotic Disorder.
 - 1.5.1. Diagnostic Criteria dsm v for Brief Psychotic Disorder 298.8 (F23).
- 1.6. Substance-Induced Psychotic Disorder.
 - 1.6.1. Diagnostic Criteria dsm v for Substance/Medication-Induced Psychotic Disorder
- 1.7. Catatonia.
 - 1.7.1. Diagnostic Criteria dsm v for Catatonia 293.89 .
- 1.8. Bipolar Disorder.
 - 1.8.1. Epidemiology.
 - 1.8.2. Etiology.
 - 1.8.3. Clinical Manifestations
 - 1.8.4. Type I.
 - 1.8.4.1. dsm v Criteria for Bipolar Disorder i.
 - 1.8.5. Type II.
 - 1.8.5.1. Criteria dsm v for Bipolar Disorder II 296.89 (F31.81).
 - 1.8.6. Type III.
- 1.9. Cyclothymic Disorder.
 - 1.9.1. With Anxiety.
- 1.10. Delirium
 - 1.10.1. For Substance Intoxication.
 - 1.10.2. For Substance Withdrawal.
 - 1.10.3. Medication-Induced.
- 1.11. Alzheimer's Disease.
- 1.12. Frontotemporal Lobe Degeneration.
- 1.13. Traumatic Brain Injury.
- 1.14. Vascular Disease.
- 1.15. Parkinson's Disease.
- 1.16. Huntington's Disease.
- 1.17. Neurological Malignant Syndrome.
- 1.18. Disorders Caused by Medications.
 - 1.18.1. Acute Dystonia
 - 1.18.2. Acetasis
 - 1.18.3. Tardive Dyskinesia
 - 1.18.4. Antidepressant Discontinuation Syndrome.



“

*A unique, key, and decisive
Training experience to boost your
professional development”*

05

Methodology

Our Postgraduate Certificate in Psychotic Psychopathology offers you an innovative method to strengthen your clinical skills based on the study of clinical cases and content in a cyclical way. This method has been the most widely used learning system by the most prestigious medical and psychology schools in the world and by relevant publications such as the New England Journal of Medicine.





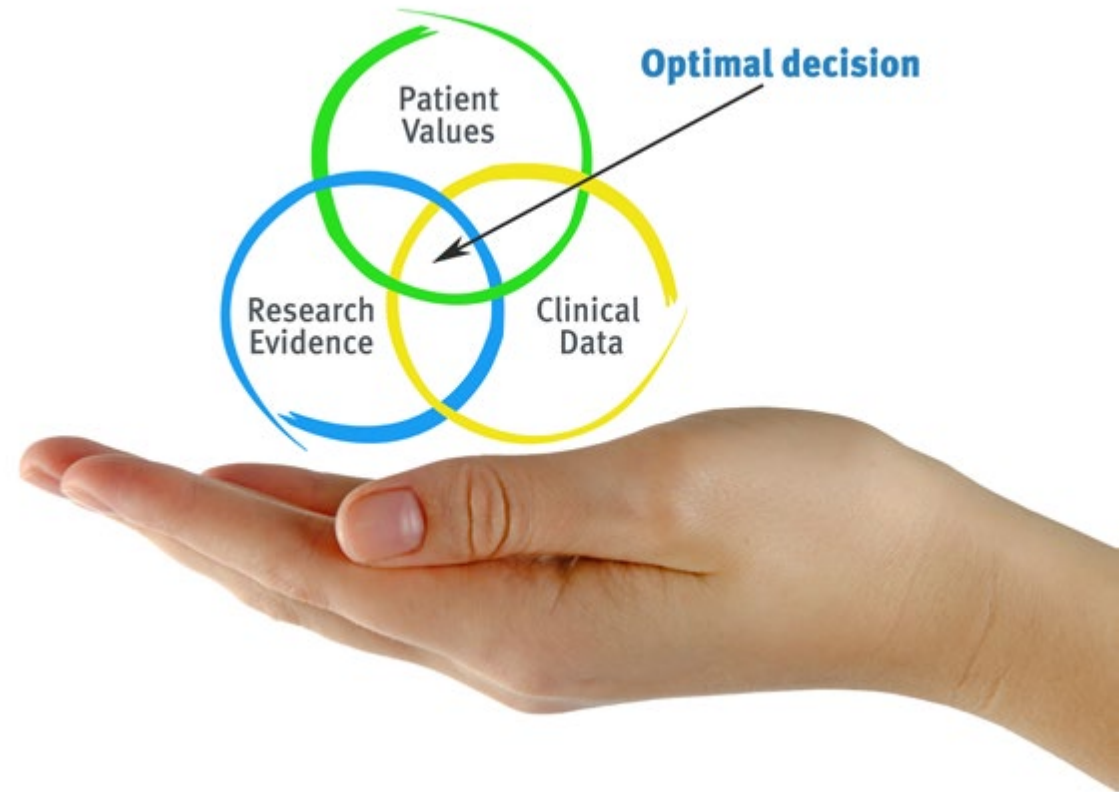
“

This type of teaching-learning encourages curiosity and skill development, as well as allowing the psychologist to feel an active part of the process".

In a given situation, what would you do? Throughout these months, the psychologist will face multiple simulated clinical cases based on real patients in which he/she will have to investigate, establish hypotheses and finally, resolve the situation. This method makes psychologists learn better as they accept more responsibility and get closer to the reality of their professional future.



Did you know that this method was developed in 1912 for Law Students? The case method consisted of presenting students with real-life, complex situations for them to make decisions and justify their decisions on how to solve them. In 1924, Harvard adopted it as a standard teaching method”



According to Dr Gervas, the clinical case is the annotated presentation of a patient, or group of patients, which becomes a "case", an example or model that illustrates some peculiar clinical component, either because of its teaching power or because of its uniqueness or rarity. It is essential that the case is based on current professional life, trying to recreate the real conditions in the psychologist's professional practice.

It is a technique that develops the critical spirit and prepares the psychologist to make decisions, defend arguments, and contrast opinions

According to Reynolds, there are four fundamental reasons that support the effectiveness of the case method applicable to psychology:

01

Psychologists develop their mental capacities better by evaluating real situations and applying concepts.

02

Psychologists will be better prepared for the development of their professional activity.

03

Ideas and concepts are better assimilated when they are analyzed in situations that have arisen from reality.

04

Psychologists voluntarily dedicate more time to work because they find it more interesting to work with cases.



Re-learning Methodology

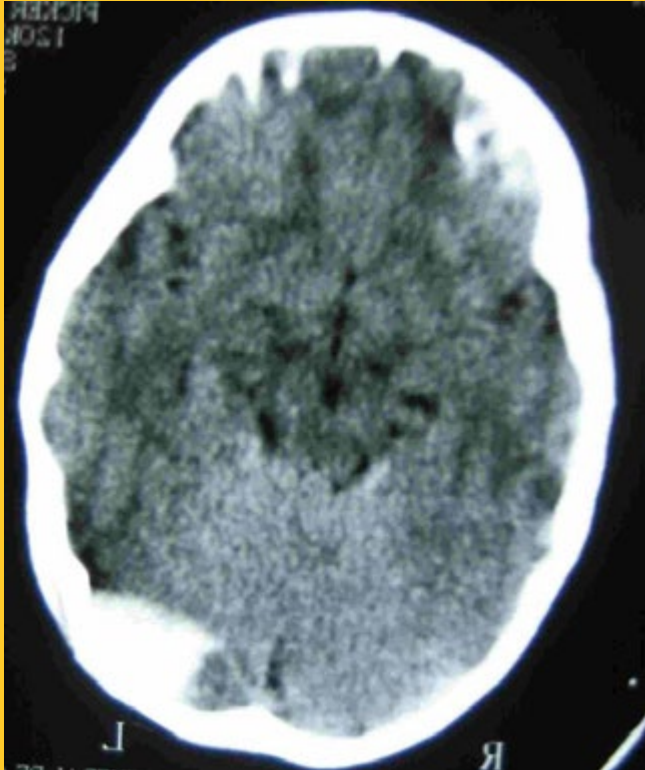


The psychologist will learn through real cases and by solving complex situations in simulated learning environments. These simulations are developed using state-of-the-art software to facilitate immersive learning”

...we enhance them with the best 100% online teaching method: Relearning...

Our university is the first in the world to combine the study of clinical cases with a 100% online learning system based on repetition, combining 8 different elements in each lesson, which represent a revolution with respect to simply studying and analyzing cases.





This methodology, at the forefront of world teaching, is called Re-learning. Our school is the first in the world licensed to use this successful method, having achieved in 2015 to improve the overall satisfaction levels (teaching quality, quality of materials, course structure, objectives...) of psychologists who complete the courses with respect to the indicators of the best online university in Spanish-speaking countries.

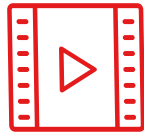
The overall score obtained by our learning system is 8.01, according to the highest international standards

In our **Postgraduate Certificate in Psychotic Psychopathology** learning is not a linear process, but happens in a spiral (we learn-unlearn (forget) and relearn); that is why we combine each of these elements in a concentric way.

With this methodology we have trained more than 40,000 health professionals with unprecedented success, in areas such as pediatrics, surgery, infectious diseases, hepatology, etc. All this in a highly demanding environment, with a university student body with a high socioeconomic profile and an average age of 42 years.

...and all this with the best learning materials at the forefront of technology and pedagogy...

In this course you will have access to the best educational material, prepared with you in mind:



Study Material

After a complex production process, we transform the best content into high-quality educational and audiovisual multimedia. We select the best syllabus and make it available to you. Everything you need to acquire in-depth knowledge of a discipline, from A to Z. Lessons written and chosen by specialists in each of the disciplines.



Surgical techniques and clinical procedures on video

We bring you closer to the newest techniques, to the latest scientific advances, to the forefront of nursing news. All this, in first person, with the maximum rigor, explained and detailed for your assimilation and understanding. And best of all, you can watch them as many times as you want.



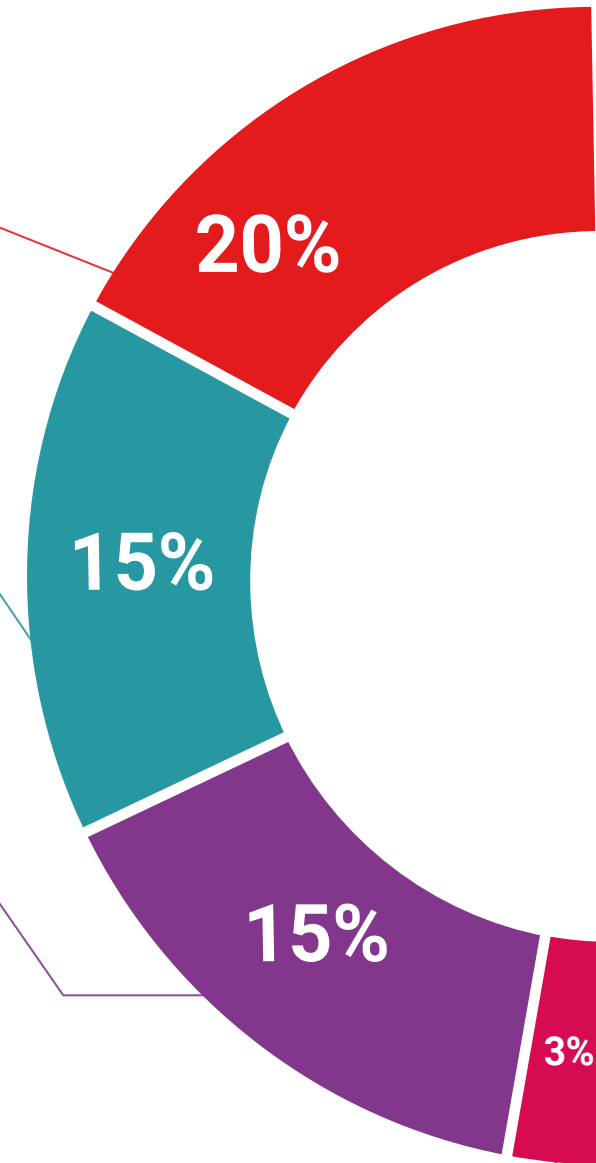
Interactive Summaries

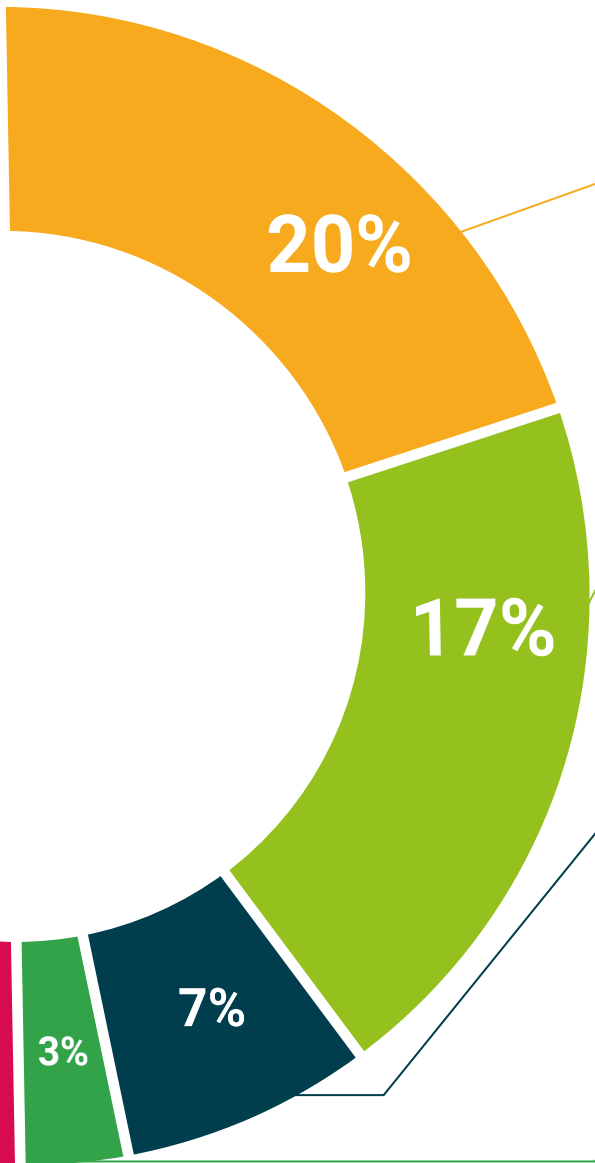
We present the contents attractively and dynamically in multimedia lessons that include audio, videos, images, diagrams, and concept maps in order to reinforce knowledge. This unique training system for presenting multimedia content was awarded by Microsoft as a "European Success Story".



Additional Reading

Recent articles, consensus documents, international guides... in our virtual library you will have access to everything you need to complete your training.





Expert-Led Case Studies and Case Analysis

Through the narratives of expert professionals, it is possible to acquire a high degree of understanding of the most frequent problematic situations. The professional's healthcare practice is not alien to the context in which it takes place. If we want to train ourselves to improve our professional practice, this training must be situated within the context in which it takes place.



Testing & Retesting

We periodically evaluate and re-evaluate your knowledge throughout this program through activities and evaluative exercises.



Classes

There is scientific evidence suggesting that observing third-party experts can be useful. Learning from an expert strengthens knowledge and recall, and generates confidence in our future difficult decisions



Quick Action Guides

One of the most important functions of our team is to select those contents considered essential and present them in the form of worksheets or quick action guides to facilitate their understanding.



06

Certificate

The Postgraduate Certificate in Psychotic Psychopathology guarantees you, as well as the most rigorous and updated training, access to a postgraduate certificate issued by TECH Technological University.



The image features two graduation caps (mortarboards) against a blue sky with light clouds. One cap is in the foreground on the left, and another is slightly behind it on the right. The background is split diagonally into a white lower-left section and a magenta upper-right section.

“

Successfully complete this course and receive your university certificate without travel or laborious paperwork”

This Postgraduate Certificate in Psychotic Psychopathology contains the most complete and up-to-date scientific program on the market.

After the student has passed the evaluations, they will receive by mail with acknowledgment of receipt their corresponding Postgraduate Certificate Degree issued by TECH Technological University.

The certificate issued by TECH Technological University will express the qualification obtained in the course, and meets the requirements commonly demanded by labor exchanges, competitive examinations and professional career evaluation committees.

Title: **Postgraduate Certificate in Psychotic Psychopathology**

ECTS: **9**

Official Number of Hours: **225 hours**



*Apostille Convention. In the event that the student wishes to have their paper certificate Apostilled, TECH EDUCATION will make the necessary arrangements to obtain it at an additional cost of €140 plus shipping costs of the Apostilled diploma.

future
health confidence people
education information tutors
guarantee accreditation teaching
institutions technology learning
community commitment
personalized service innovation
knowledge present quality
development languages
classroom



Postgraduate Certificate Psychotic Psychopathology

- » Modality: online
- » Duration: 6 weeks
- » Certificate: TECH Technological University
- » Dedication: 16h/week
- » Schedule: at your own pace
- » Exams: online

Postgraduate Certificate Psychotic Psychopathology

