

Postgraduate Certificate

Neuropsychological Assessment



Postgraduate Certificate

Neuropsychological Assessment

- » Modality: online
- » Duration: 6 weeks
- » Certificate: TECH Global University
- » Credits: 6 ECTS
- » Schedule: at your own pace
- » Exams: online

Website: www.techtute.com/us/psychology/postgraduate-certificate/neuropsychological-assessment

Index

01

Introduction

p. 4

02

Objectives

p. 8

03

Structure and Content

p. 12

04

Methodology

p. 16

05

Certificate

p. 24

01

Introduction

Using all the procedures of neuropsychological assessment requires a complete knowledge base in this area, including theoretical developments that provide explanations and answers, and practical forms of intervention. This program offers you all of them in a course of the highest quality, so that you acquire the skills of an expert in just a few weeks of work.





“

This Postgraduate Certificate will broaden your horizons as a psychologist and will allow you to grow personally and professionally"

This Postgraduate Certificate provides extensive knowledge in advanced models and techniques in Neuropsychological Assessment. For this, you will have a teaching faculty that stands out for its extensive professional experience in the different fields in which psychology has developed and in different sectors of the population.

Throughout this program, you will learn the current and newest approaches on this topic. You will learn to describe and measure variables (personality, intelligence and other skills) and cognitive, emotional, psychobiological and behavioral processes.

We will not only take you through the theoretical knowledge we offer, but we will introduce you to another way of studying and learning, one which is simpler, more organic and more efficient. We will work to keep you motivated and to develop your passion for learning, helping you to analyze and to develop critical thinking skills.

A high-level step that will become a process of improvement, not only on a professional level, but also on a personal level.

This **Postgraduate Certificate in Neuropsychological Assessment** contains the most complete and up-to-date program on the market. The most important features include:

- ♦ The development of 100 case studies presented by experts in Developmental Psychology
- ♦ The graphic, schematic, and practical contents provide students with scientific and practical information on the disciplines that are essential for Psychologist
- ♦ New developments and innovations in the different areas of psychology
- ♦ Practical exercises where self-assessment can be used to improve learning
- ♦ Algorithm-based interactive learning system for decision-making in the situations that are presented to the student
- ♦ Special emphasis on cutting-edge methodologies
- ♦ Theoretical lessons, questions to the expert, debate forums on controversial topics, and individual reflection assignments
- ♦ Content that is accessible from any fixed or portable device with an Internet connection



An educational program created for professionals who aspire for excellence, and that will enable you to acquire new skills and strategies easily and effectively"



A totally efficiency-focused approach that will allow you to learn in a real, constant and efficient way"

It includes a very broad teaching staff made up of experts in psychology, who share their work experience in this program, as well as recognized specialists from leading communities and prestigious universities.

The multimedia content, developed with the latest educational technology, will provide the professional with situated and contextual learning, i.e., a simulated environment that will provide an immersive program designed to learn in real situations.

This program is designed around Problem-Based Learning, where the student must try to solve the different professional practice situations that arise during the course. For this purpose, the professional will be assisted by an innovative interactive video system created by renowned and experienced research experts.

Increase your confidence as a psychologist, updating your knowledge through this program.

This Postgraduate Certificate makes the difference between a professional with a lot of knowledge and a truly competent professional.



02

Objectives

The objectives of this program have been established as a guide for the development of all training with the specific mission of offering the students a very intensive specialization that really boosts their professional progression. A journey of personal growth that will take you to the top in your intervention as a psychologist.





“

If your goal is to improve in your profession, to acquire a qualification that will enable you to compete among the best, then look no further. This training will give your career the boost it needs"

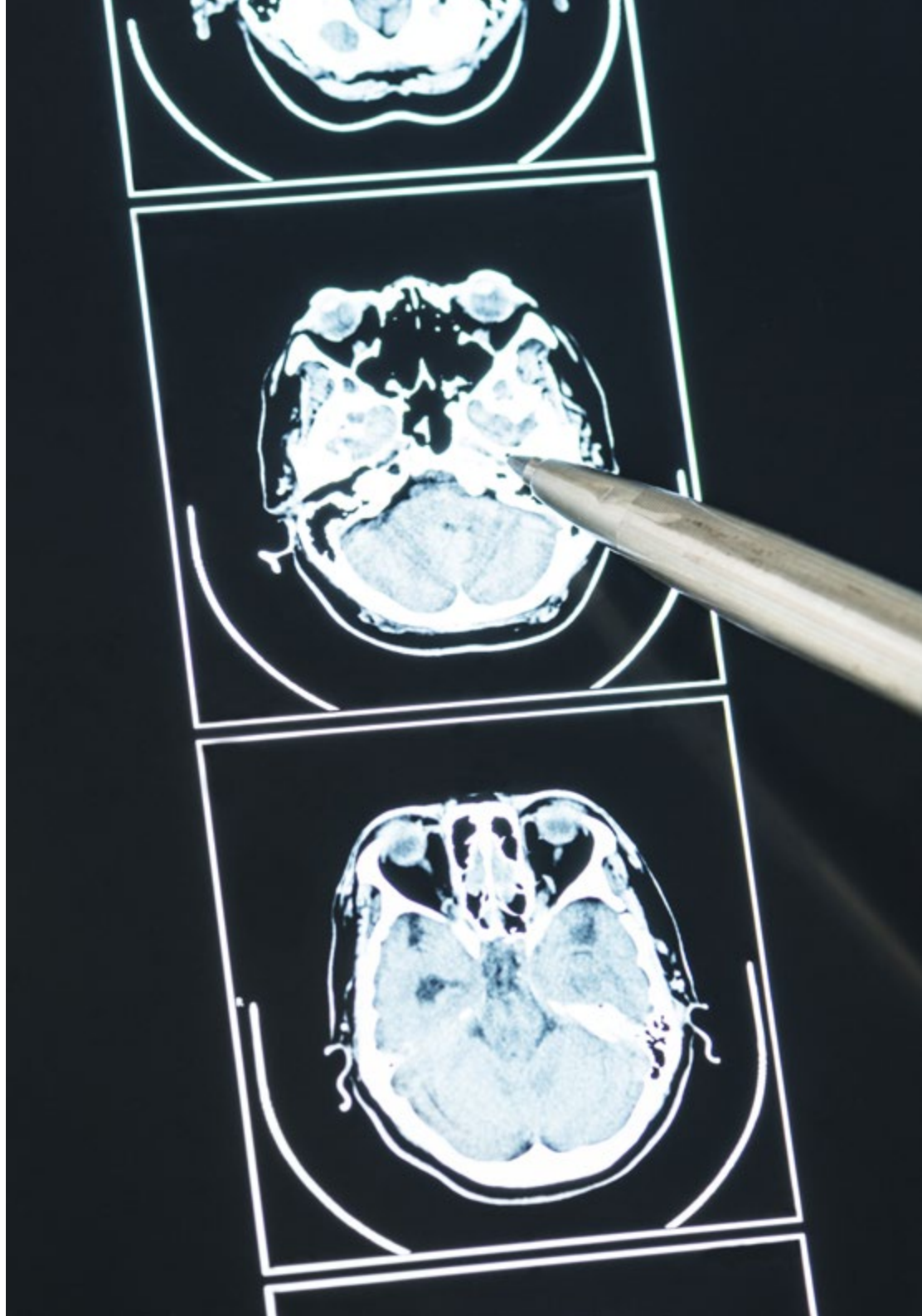


General Objective

- Train professionals qualified for the practice of psychology who can intervene with real working capacity and optimal results, supported by the complete management of ethics and deontology, with the most updated and useful theoretical and practical knowledge



This Postgraduate Certificate is aimed at psychologists who are looking for an increase in their assistance capacity and a boost to their career"





Specific Objectives

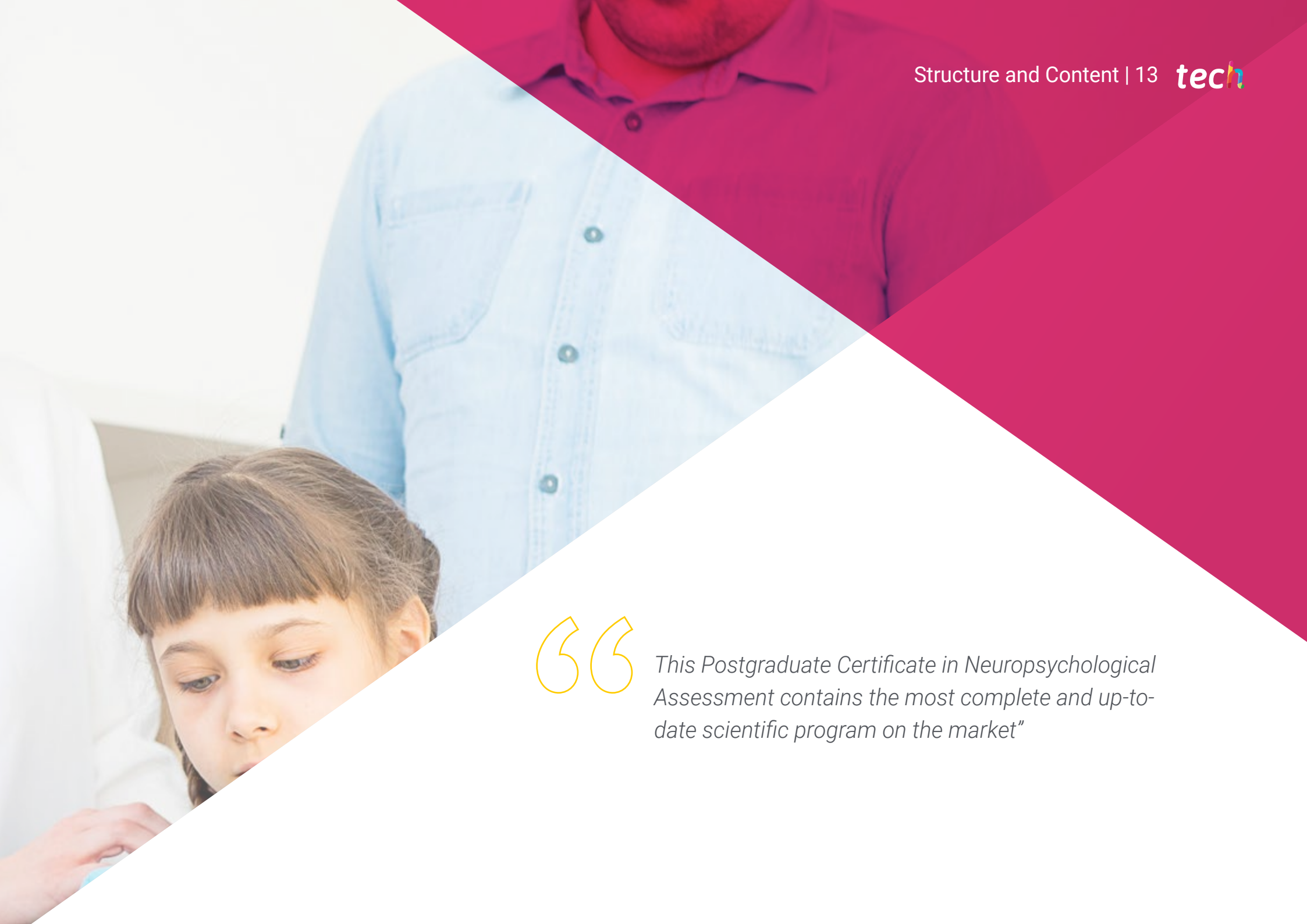
- ♦ Make differential diagnoses
- ♦ Study the nature of neuropsychological deficits in order to characterize impairments, plan interventions and make expert judgments
- ♦ Learn the fundamentals of neuropsychological assessment, processes and phases of neuropsychological assessment, to know and better understand the relationships between cognitive and behavioral dysfunctions and brain alterations
- ♦ Understand the different procedures and tools for assessment, correction, interpretation, neuropsychological diagnosis and reporting
- ♦ Carry out the design of a psychological evaluation appropriate to the characteristics of the target audience

03

Structure and Content

The contents of this comprehensive training program have been developed by the sector's most competent professionals, with a high quality criterion at every stage of the course. For this purpose, the most relevant and comprehensive topics have been selected, with the latest and most interesting updates.





“

This Postgraduate Certificate in Neuropsychological Assessment contains the most complete and up-to-date scientific program on the market”

Module 1. Neuropsychological Assessment

- 1.1. Theoretical Foundations of Neuropsychological Assessment
 - 1.1.1. Definition and objectives of neuropsychological assessment
 - 1.1.2. Contents of the Neuropsychological Evaluation
 - 1.1.3. Approach to the neuropsychological assessment process
 - 1.1.4. Generalities of the neuropsychological evaluation process
- 1.2. Anamnesis or Medical History
 - 1.2.1. Introduction and Role of the Clinical History
 - 1.2.2. Compilation of Clinical History
 - 1.2.3. History Content
- 1.3. Clinical Interview and Behavioral Observation
 - 1.3.1. Clinical Interview
 - 1.3.2. Behavioral observation
 - 1.3.3. Conclusions
- 1.4. Essential Elements of Selection, Administration and Proofreading
 - 1.4.1. Optimization of performance, motivation and alertness
 - 1.4.2. Record Keeping and Note Taking
 - 1.4.3. Test Standards Procedures
 - 1.4.4. Proofreading
 - 1.4.5. Levels of interpretation of neuropsychological tests
- 1.5. Special Populations in Neuropsychological Evaluation
 - 1.5.1. Input and output channels: application of tests to patients with visual or hearing impairments
 - 1.5.2. Application of Tests to Patients with Aphasia
 - 1.5.3. Application of Tests to Patients with Motor Impairment
 - 1.5.4. Bilingualism and cultural aspects
 - 1.5.5. Child Neuropsychological Evaluations
 - 1.5.6. Geroneuropsychology
 - 1.5.7. Psychiatric Behaviours
 - 1.5.8. Forensics Neuropsychological Evaluations
- 1.6. Neuropsychological report writing
 - 1.6.1. Introduction
 - 1.6.2. Guidelines for the correct drafting of a neuropsychological report
 - 1.6.3. Organisation of a Neuropsychological Report
- 1.7. Instruments for the assessment of general intelligence or cognitive ability
 - 1.7.1. Wechsler Scale
 - 1.7.2. Reynolds Scales
 - 1.7.3. Kauffman Scales
 - 1.7.4. Stanford-Binet Scales
 - 1.7.5. Raven Scales
- 1.8. Instruments for care assessment
 - 1.8.1. Color Trail Test
 - 1.8.2. Trail-Making Test
 - 1.8.3. Conners continuous performance test
 - 1.8.4. Digit Span
 - 1.8.5. Face Difference Perception Test
 - 1.8.6. Attention and concentration capacity test d2
 - 1.8.7. 5-digit test FDT
 - 1.8.8. Figure matching test MFF-20
- 1.9. Instruments for the assessment of executive functions
 - 1.9.1. Behavioural assessment of the disexecutive syndrome BADS
 - 1.9.2. Tower of Hanoi/Seville, Ring Test, Tower of London, and Mexico Pyramid
 - 1.9.3. Stroop Color and Word Test
 - 1.9.4. Neuropsychological Evaluation of Executive Functions in Children ENFEN
 - 1.9.5. Wisconsin Card Sorting Test
 - 1.9.6. Porteus Maze Test
- 1.10. Learning and memory assessment instruments
 - 1.10.1. California Verbal Learning Test (CVLT)
 - 1.10.2. Weschler-iv memory scales
 - 1.10.3. Spain-Complutense Verbal Learning Test TAVEC and TAVECI
 - 1.10.4. TOMAL Memory and Learning Test
 - 1.10.5. Immediate and delayed reproduction test of the figure of King Osterrieth



“

Our syllabus has been designed with teaching effectiveness in mind: so that you learn faster, more efficiently, and on a more permanent basis”

04

Methodology

This academic program offers students a different way of learning. Our methodology uses a cyclical learning approach: **Relearning**.

This teaching system is used, for example, in the most prestigious medical schools in the world, and major publications such as the **New England Journal of Medicine** have considered it to be one of the most effective. w



“

Discover Relearning, a system that abandons conventional linear learning, to take you through cyclical teaching systems: a way of learning that has proven to be extremely effective, especially in subjects that require memorization"

At TECH we use the Case Method

What should a professional do in a given situation? Throughout the program, students will face multiple simulated clinical cases, based on real patients, in which they will have to do research, establish hypotheses, and ultimately resolve the situation. There is an abundance of scientific evidence on the effectiveness of the method. Specialists learn better, faster, and more sustainably over time.

With TECH the psychologist experiences a way of learning that is shaking the foundations of traditional universities around the world.



According to Dr. Gérvas, the clinical case is the annotated presentation of a patient, or group of patients, which becomes a "case", an example or model that illustrates some peculiar clinical component, either because of its teaching power or because of its uniqueness or rarity. It is essential that the case is based on current professional life, trying to recreate the real conditions in the psychologist's professional practice.

“

Did you know that this method was developed in 1912, at Harvard, for law students? The case method consisted of presenting students with real-life, complex situations for them to make decisions and justify their decisions on how to solve them. In 1924, Harvard adopted it as a standard teaching method”

The effectiveness of the method is justified by four fundamental achievements:

1. Psychologists who follow this method not only master the assimilation of concepts, but also develop their mental capacity by means of exercises to evaluate real situations and apply their knowledge.
2. Learning is solidly translated into practical skills that allow the psychologist to better integrate knowledge into clinical practice.
3. Ideas and concepts are understood more efficiently, given that the example situations are based on real-life.
4. Students like to feel that the effort they put into their studies is worthwhile. This then translates into a greater interest in learning and more time dedicated to working on the course.



Relearning Methodology

At TECH we enhance the case method with the best 100% online teaching methodology available: Relearning.

Our university is the first in the world to combine the study of clinical cases with a 100% online learning system based on repetition, combining a minimum of 8 different elements in each lesson, which is a real revolution compared to the simple study and analysis of cases.

The psychologist will learn through real cases and by solving complex situations in simulated learning environments. These simulations are developed using state-of-the-art software to facilitate immersive learning.



At the forefront of world teaching, the Relearning method has managed to improve the overall satisfaction levels of professionals who complete their studies, with respect to the quality indicators of the best online university (Columbia University).

This methodology has trained more than 150,000 psychologists with unprecedented success in all clinical specialties. Our pedagogical methodology is developed in a highly competitive environment, with a university student body with a strong socioeconomic profile and an average age of 43.5 years old.

Relearning will allow you to learn with less effort and better performance, involving you more in your training, developing a critical mindset, defending arguments, and contrasting opinions: a direct equation for success.

In our program, learning is not a linear process, but rather a spiral (learn, unlearn, forget, and re-learn). Therefore, we combine each of these elements concentrically.

The overall score obtained by our learning system is 8.01, according to the highest international standards.



This program offers the best educational material, prepared with professionals in mind:



Study Material

All teaching material is produced by the specialists who teach the course, specifically for the course, so that the teaching content is highly specific and precise.

These contents are then applied to the audiovisual format, to create the TECH online working method. All this, with the latest techniques that offer high quality pieces in each and every one of the materials that are made available to the student.



Latest Techniques and Procedures on Video

TECH introduces students to the latest techniques, to the latest educational advances, to the forefront of current psychology. All of this in direct contact with students and explained in detail so as to aid their assimilation and understanding. And best of all, you can watch the videos as many times as you like.



Interactive Summaries

The TECH team presents the contents attractively and dynamically in multimedia lessons that include audio, videos, images, diagrams, and concept maps in order to reinforce knowledge.

This exclusive educational system for presenting multimedia content was awarded by Microsoft as a "European Success Story".



Additional Reading

Recent articles, consensus documents and international guidelines, among others. In TECH's virtual library, students will have access to everything they need to complete their course.





Expert-Led Case Studies and Case Analysis

Effective learning ought to be contextual. Therefore, TECH presents real cases in which the expert will guide students, focusing on and solving the different situations: a clear and direct way to achieve the highest degree of understanding.



Testing & Retesting

We periodically evaluate and re-evaluate students' knowledge throughout the program, through assessment and self-assessment activities and exercises, so that they can see how they are achieving their goals.



Classes

There is scientific evidence suggesting that observing third-party experts can be useful.

Learning from an Expert strengthens knowledge and memory, and generates confidence in future difficult decisions.



Quick Action Guides

TECH offers the most relevant contents of the course in the form of worksheets or quick action guides. A synthetic, practical, and effective way to help students progress in their learning.



05

Certificate

The Postgraduate Certificate in Neuropsychological Assessment guarantees students, in addition to the most rigorous and up-to-date education, access to a Postgraduate Certificate issued by TECH Global University.



“

Include on your specialization a Postgraduate Certificate in Neuropsychological Assessment: A huge step forward in your competitiveness in the sector”

This program will allow you to obtain your **Postgraduate Certificate in Neuropsychological Assessment** endorsed by **TECH Global University**, the world's largest online university.

TECH Global University is an official European University publicly recognized by the Government of Andorra ([official bulletin](#)). Andorra is part of the European Higher Education Area (EHEA) since 2003. The EHEA is an initiative promoted by the European Union that aims to organize the international training framework and harmonize the higher education systems of the member countries of this space. The project promotes common values, the implementation of collaborative tools and strengthening its quality assurance mechanisms to enhance collaboration and mobility among students, researchers and academics.

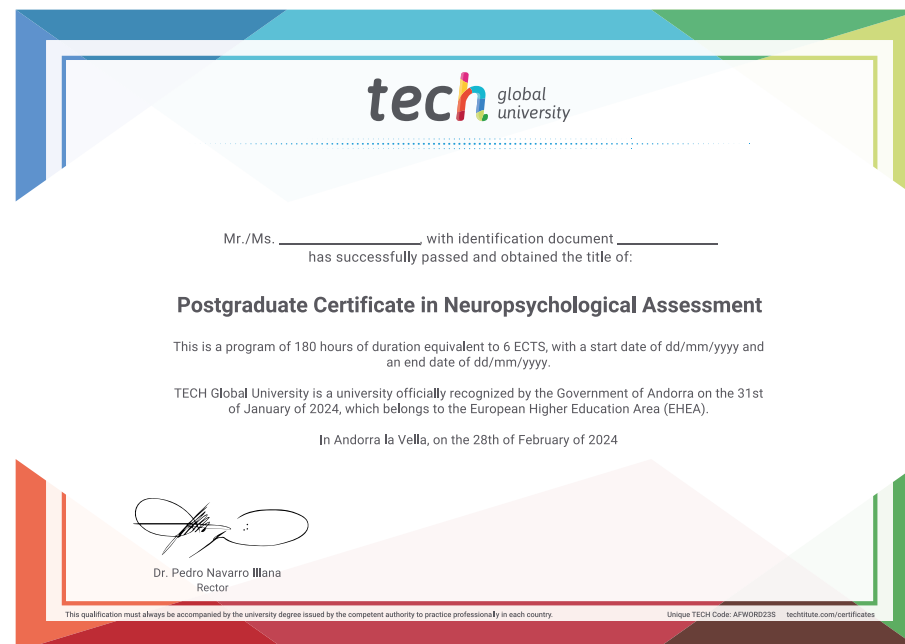
This **TECH Global University** title is a European program of continuing education and professional updating that guarantees the acquisition of competencies in its area of knowledge, providing a high curricular value to the student who completes the program.

Title: **Postgraduate Certificate in Neuropsychological Assessment**

Modality: **online**

Duration: **6 weeks**

Accreditation: **6 ECTS**



*Apostille Convention. In the event that the student wishes to have their paper diploma issued with an apostille, TECH Global University will make the necessary arrangements to obtain it, at an additional cost.



Postgraduate Certificate Neuropsychological Assessment

- » Modality: online
- » Duration: 6 weeks
- » Certificate: TECH Global University
- » Credits: 6 ECTS
- » Schedule: at your own pace
- » Exams: online

Postgraduate Certificate Neuropsychological Assessment

