

# Postgraduate Certificate

## Judicial Expertise and Assessment of Physical Damage in Forensic Psychology





## Postgraduate Certificate Judicial Expertise and Assessment of Physical Damage in Forensic Psychology

- » Modality: online
- » Duration: 6 Week
- » Certificate: TECH Technological University
- » Dedication: 16h/week
- » Schedule: at your own pace
- » Exams: online

Website: [www.techtute.com/pk/psychology/postgraduate-certificate/judicial-expertise-assessment-physical-damage-forensic-psychology](http://www.techtute.com/pk/psychology/postgraduate-certificate/judicial-expertise-assessment-physical-damage-forensic-psychology)

# Index

01

Introduction

---

*p. 4*

02

Objectives

---

*p. 8*

03

Structure and Content

---

*p. 12*

04

Methodology

---

*p. 16*

05

Certificate

---

*p. 24*

01

# Introduction

The expert opinion is a basic evidence that is provided in court, since it is the assessment of a professional on some fact that is brought to trial. This makes it imperative for forensic psychologists to expand their knowledge in this field. In this case, this program specializes in Judicial Expertise and Assessment of Physical Damage in Forensic Psychology. Professionals should not miss this opportunity and learn at the largest private Spanish-speaking university in the world.





“

*Improve your knowledge in Judicial Expertise and Physical Damage Assessment in Forensic Psychology, through this program, where you will find the best didactic material with real clinical cases”*

Psychology is the science that studies human behavior, tries to give explanations to the behaviors we perform, and infers which behavior is more likely to occur under certain circumstances, The specialty of Forensic Psychology studies all this applied to the field of justice.

The objective of the Postgraduate Certificate in Judicial Expertise and Physical Damage Assessment in Forensic Psychology is to cover a field of research that is booming thanks to the professionals who want to continue their training in this area. This program aims to provide knowledge about the multiple topics that are developed within Forensic Psychology, as well as the explanation and implementation of various questionnaires used in professional practice that help to know the current pathologies in the individual, to be able to make the assessment of them when appropriate.

In this training we will study topics related to the world of Forensic Psychology and its relationship with the courts. Specifically, it has several theoretical blocks where topics related to the assessment of physical damage will be developed.

In addition, this 100% online training will allow students to continue with their training while they carry out other obligations in their daily lives, as they can organize themselves and choose when and where to study, since they only need a device with an internet connection. The professionals should join this community of learners and will notice how their career progresses.

This **Postgraduate Certificate in Judicial Expertise and Assessment of Physical Damage in Forensic Psychology** contains the most complete and updated academic program in the university scene. Its most outstanding features are:

- ♦ The development of case studies presented by experts in psychology and scientific research
- ♦ Its graphic, schematic and eminently practical contents provide scientific and practical information on those disciplines that are essential for the practice of research
- ♦ New developments and innovations in research in the different fields of Psychology
- ♦ Practical exercises where self-assessment can be used to improve learning
- ♦ Algorithm-based interactive learning system for decision-making in the situations that are presented to the student
- ♦ Special emphasis on research methodologies
- ♦ Theoretical lessons, questions to the expert, debate forums on controversial topics, and individual reflection assignments
- ♦ Content that is accessible from any fixed or portable device with an Internet connection



*Update your knowledge through the Postgraduate Certificate in Judicial Expertise and Assessment of Physical Damage in Forensic Psychology"*

“

*This Postgraduate Certificate is the best investment you can make in the selection of a refresher program for two reasons: in addition to updating your knowledge in Forensic Psychology, you will obtain a degree from TECH Technological University"*

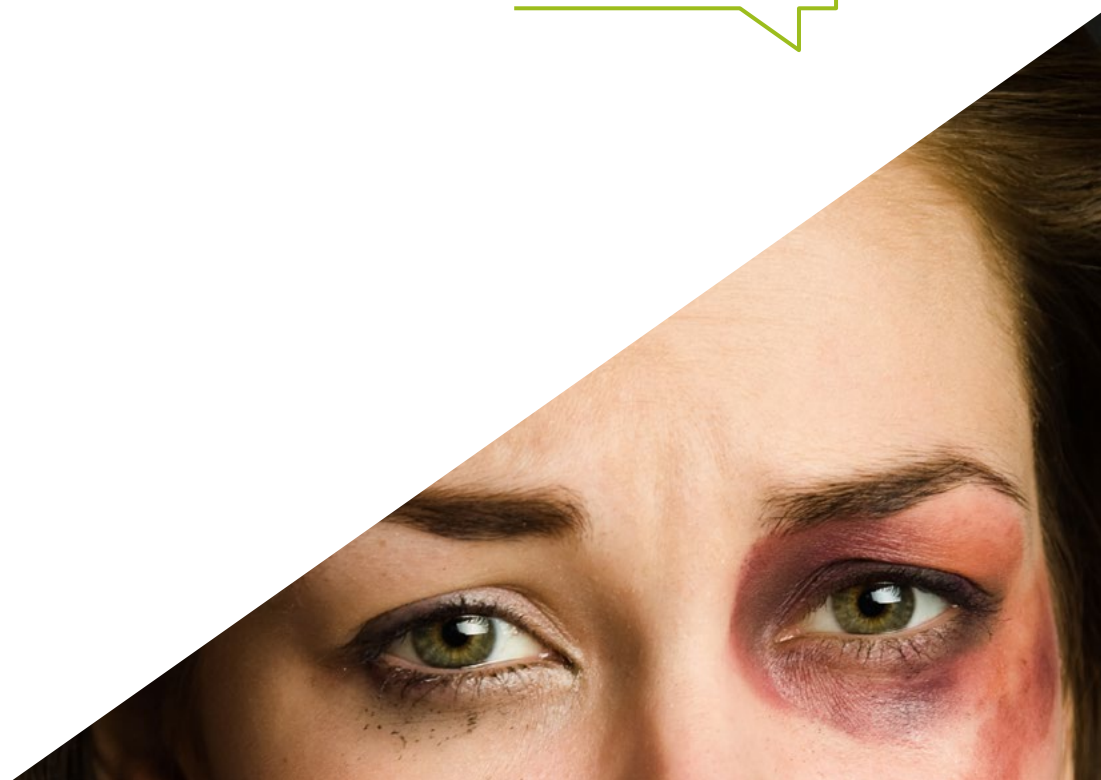
The program includes in its teaching staff professionals belonging to the field of legal and forensic psychology, who bring to this training the experience of their work, in addition to recognized specialists from leading scientific societies.

The multimedia content, developed with the latest educational technology, will provide the professional with situated and contextual learning, i.e., a simulated environment that will provide an immersive program designed to learn in real situations.

The design of this program is based on Problem-Based Learning, by means of which the psychologist must try to solve the different professional practice situations that arise. For this purpose, the professional will be assisted by an innovative interactive video system developed by renowned experts in the field of Judicial Expertise and Assessment of Physical Damage in Forensic Psychology with extensive experience.

*Increase your decision-making confidence by updating your knowledge through this Postgraduate Certificate.*

*Take the opportunity to learn about the latest advances in Judicial Expertise and Assessment of Physical Damage in Forensic Psychology and develop yourself in this exciting field.*



02

# Objectives

The Postgraduate Certificate in Judicial Expertise and Assessment of Physical Damage in Forensic Psychology is aimed at facilitating the psychologist's performance in expert and legal environments in which his or her clinical experience is required.





“

*This Postgraduate Certificate will allow you to update your knowledge in Judicial Expertise and Physical Damage Assessment in Forensic Psychology with the use of the latest educational technology, to contribute with quality and security to decision making"*



## General Objectives

---

- ♦ To broaden the knowledge of Psychology applied to the legal field
- ♦ To facilitate the acquisition of knowledge about Forensic Psychology, as well as to assess the different cases presented
- ♦ Promote the acquisition of skills and abilities in the forensic field
- ♦ To encourage the study of this training through a theoretical-practical basis



*Take the step to get up to date on the latest developments in Judicial Expertise and Assessment of Physical Damage in Forensic Psychology"*





## Specific Objectives

---

- ♦ To review the legal foundations of damages in the history of personal injury valuation
- ♦ To study community legislation and medical assessment of bodily injury, as well as the scales used
- ♦ To classify the scales according to their scope of application, the nature of the sequelae considered or the scoring method To define the medico-legal framework of injuries and their legal classification
- ♦ To study the reparation of damages in cases of victims of terrorism or armed gangs and victims of violent crimes or crimes against sexual freedom
- ♦ To establish the qualities of the personal injury appraisal report, as well as its scope, application, addressee and formal aspects

03

# Structure and Content

The structure of the contents has been designed by a team of professionals from the best forensic centers and universities in the national territory, aware of the relevance of current training to be able to intervene in situations that require the legal and forensic psychological approach, committed to quality teaching through new educational technologies.





“

*We have the most complete and up-to-date academic program in the market. We strive for excellence and for you to achieve it too"*

## Module 1. Judicial Expertise - Physical Damage Assessment

- 1.1. Medical Assessment of Damage to the Person
  - 1.1.1. Damage Repair
- 1.2. Psychological Assessment
  - 1.2.1. Deficiency
  - 1.2.2. Disability
  - 1.2.3. Handicap
- 1.3. Medical and Psychological Assessment.
  - 1.3.1. Other Criminal Damages
- 1.4. Medical and Psychological Assessment.
  - 1.4.1. Other Civil Damages (I)
- 1.5. Economic and Patrimonial Damages
  - 1.5.1. Assessment
  - 1.5.2. Understanding the Official State Gazette (BOE).
- 1.6. Medical Assessment
  - 1.6.1. Other Civil Damages (II)
- 1.7. Medical Assessment
  - 1.7.1. Occupational Damages
    - 1.7.1.1. Classification of Accidents
    - 1.7.1.2. Occupational Risk Prevention (ORP)
    - 1.7.1.3. Negligence
- 1.8. The Medical Expert's Mission in Personal Injury Appraisal
  - 1.8.1. Evaluation Guide
  - 1.8.2. BOE
- 1.9. Methodology in the Valuation of Damage
  - 1.9.1. Evaluation Guide
  - 1.9.2. BOE
- 1.10. The Medical Report in the Valuation of Damage





“

*A unique, key, and decisive experience to boost your professional development”*

04

# Methodology

This academic program offers students a different way of learning. Our methodology uses a cyclical learning approach: ***Relearning***.

This teaching system is used, for example, in the most prestigious medical schools in the world, and major publications such as the ***New England Journal of Medicine*** have considered it to be one of the most effective.





“

*Discover Relearning, a system that abandons conventional linear learning to take you through cyclical teaching systems: a way of learning that has proven to be extremely effective, especially in subjects that require memorization”*

## At TECH we use the Case Method

What should a professional do in a given situation? Throughout the program, students will face multiple simulated clinical cases, based on real patients, in which they will have to do research, establish hypotheses, and ultimately resolve the situation. There is an abundance of scientific evidence on the effectiveness of the method. Specialists learn better, faster, and more sustainably over time.

*With TECH the psychologist experiences a way of learning that is shaking the foundations of traditional universities around the world.*



According to Dr. Gérvas, the clinical case is the annotated presentation of a patient, or group of patients, which becomes a "case", an example or model that illustrates some peculiar clinical component, either because of its teaching power or because of its uniqueness or rarity. It is essential that the case is based on current professional life, trying to recreate the real conditions in the psychologist's professional practice.

“

*Did you know that this method was developed in 1912, at Harvard, for law students? The case method consisted of presenting students with real-life, complex situations for them to make decisions and justify their decisions on how to solve them. In 1924, Harvard adopted it as a standard teaching method”*

The effectiveness of the method is justified by four fundamental achievements:

1. Psychologists who follow this method not only master the assimilation of concepts, but also develop their mental capacity by means of exercises to evaluate real situations and apply their knowledge.
2. Learning is solidly translated into practical skills that allow the psychologist to better integrate knowledge into clinical practice.
3. Ideas and concepts are understood more efficiently, given that the example situations are based on real-life.
4. Students like to feel that the effort they put into their studies is worthwhile. This then translates into a greater interest in learning and more time dedicated to working on the course.



This program offers the best educational material, prepared with professionals in mind:



#### Study Material

All teaching material is produced by the specialists who teach the course, specifically for the course, so that the teaching content is highly specific and precise.

These contents are then applied to the audiovisual format, to create the TECH online working method. All this, with the latest techniques that offer high quality pieces in each and every one of the materials that are made available to the student.



#### Latest Techniques and Procedures on Video

TECH introduces students to the latest techniques, to the latest educational advances, to the forefront of current psychology. All of this in direct contact with students and explained in detail so as to aid their assimilation and understanding. And best of all, you can watch the videos as many times as you like.



#### Interactive Summaries

The TECH team presents the contents attractively and dynamically in multimedia lessons that include audio, videos, images, diagrams, and concept maps in order to reinforce knowledge.

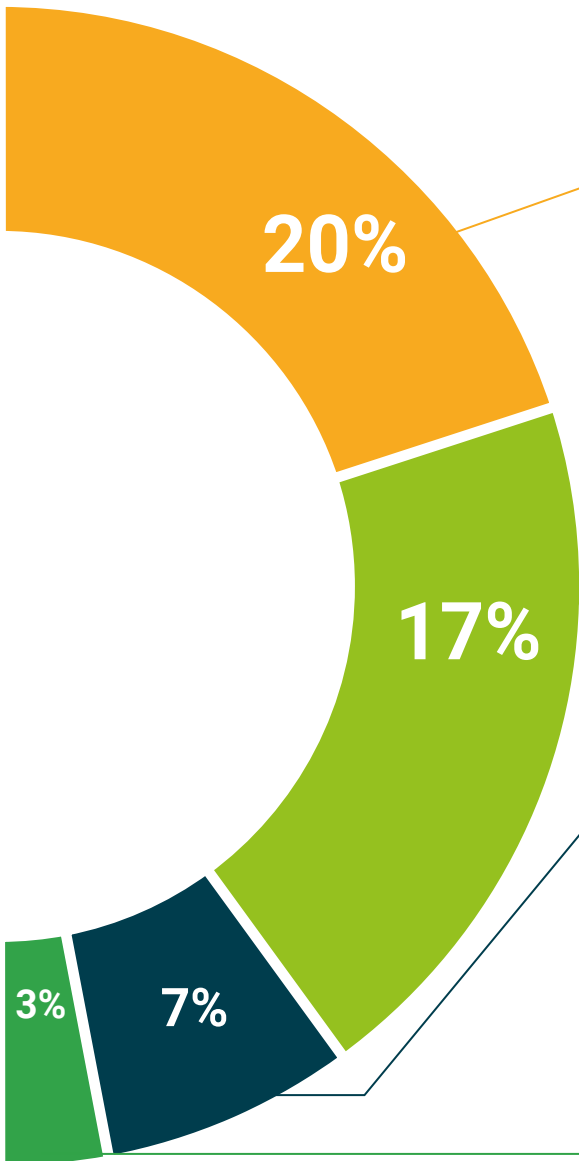
This exclusive educational system for presenting multimedia content was awarded by Microsoft as a "European Success Story".



#### Additional Reading

Recent articles, consensus documents and international guidelines, among others. In TECH's virtual library, students will have access to everything they need to complete their course.





#### Expert-Led Case Studies and Case Analysis

Effective learning ought to be contextual. Therefore, TECH presents real cases in which the expert will guide students, focusing on and solving the different situations: a clear and direct way to achieve the highest degree of understanding.



#### Testing & Retesting

We periodically evaluate and re-evaluate students' knowledge throughout the program, through assessment and self-assessment activities and exercises, so that they can see how they are achieving their goals.



#### Classes

There is scientific evidence suggesting that observing third-party experts can be useful.

Learning from an Expert strengthens knowledge and memory, and generates confidence in future difficult decisions.



#### Quick Action Guides

TECH offers the most relevant contents of the course in the form of worksheets or quick action guides. A synthetic, practical, and effective way to help students progress in their learning.



This program offers the best educational material, prepared with professionals in mind:



#### Study Material

All teaching material is produced by the specialists who teach the course, specifically for the course, so that the teaching content is highly specific and precise.

These contents are then adapted in audiovisual format, to create the TECH online working method. All this, with the latest techniques that offer high-quality pieces in each and every one of the materials that are made available to the student.



#### Latest Techniques and Procedures on Video

TECH introduces students to the latest techniques, to the latest educational advances, to the forefront of current psychology. All of this in direct contact with students and explained in detail so as to aid their assimilation and understanding. And best of all, you can watch the videos as many times as you like.



#### Interactive Summaries

The TECH team presents the contents attractively and dynamically in multimedia lessons that include audio, videos, images, diagrams, and concept maps in order to reinforce knowledge.

This exclusive educational system for presenting multimedia content was awarded by Microsoft as a "European Success Story".



#### Additional Reading

Recent articles, consensus documents and international guidelines, among others. In TECH's virtual library, students will have access to everything they need to complete their course.





#### Expert-Led Case Studies and Case Analysis

Effective learning ought to be contextual. Therefore, TECH presents real cases in which the expert will guide students, focusing on and solving the different situations: a clear and direct way to achieve the highest degree of understanding.



#### Testing & Retesting

We periodically assess and re-assess students' knowledge throughout the program, through assessment and self-assessment activities and exercises, so that they can see how they are achieving their goals.



#### Classes

There is scientific evidence suggesting that observing third-party experts can be useful.

Learning from an Expert strengthens knowledge and memory, and generates confidence in future difficult decisions.



#### Quick Action Guides

TECH offers the most relevant contents of the course in the form of worksheets or quick action guides. A synthetic, practical and effective way to help students progress in their learning.



05

# Certificate

The Postgraduate Certificate in Forensic Psychology and Assessment of Physical Damage in Forensic Psychology guarantees students, in addition to the most rigorous and up-to-date education, access to a Postgraduate Certificate issued by TECH Technological University.







*Successfully complete this program and receive your university qualification without having to travel or fill out laborious paperwork"*

This **Postgraduate Certificate in Judicial Expertise and Assessment of Physical Damage in Forensic Psychology** contains the most complete and up-to-date scientific on the market.

After the student has passed the assessments, they will receive their corresponding **Postgraduate Certificate** issued by **TECH Technological University** via tracked delivery.

The certificate issued by **TECH Technological University** will express the qualification obtained in the Postgraduate Certificate, and meets the requirements commonly demanded by labor exchanges, competitive examinations, and professional career evaluation committees.

Title: **Postgraduate Certificate in Judicial Expertise and Assessment of Physical Damage in Forensic Psychology**

Official No. of Hours: **225 h.**



\*Apostille Convention. In the event that the student wishes to have their paper certificate issued with an apostille, TECH EDUCATION will make the necessary arrangements to obtain it, at an additional cost.



## Postgraduate Certificate

### Judicial Expertise and Assessment of Physical Damage in Forensic Psychology

- » Modality: online
- » Duration: 6 Week
- » Certificate: TECH Technological University
- » Dedication: 16h/week
- » Schedule: at your own pace
- » Exams: online

# Postgraduate Certificate

## Judicial Expertise and Assessment of Physical Damage in Forensic Psychology