

# Postgraduate Certificate

## Introduction to Learning Difficulties and Developmental Disorders





## Postgraduate Certificate

### Introduction to Learning Difficulties and Developmental Disorders

- » Modality: online
- » Duration: 6 weeks
- » Certificate: TECH Technological University
- » Dedication: 16h/week
- » Schedule: at your own pace
- » Exams: online

Website: [www.techtute.com/in/psychology/postgraduate-certificate/introduction-learning-difficulties-developmental-disorders](http://www.techtute.com/in/psychology/postgraduate-certificate/introduction-learning-difficulties-developmental-disorders)

# Index

01

Introduction

---

*p. 4*

02

Objectives

---

*p. 8*

03

Course Management

---

*p. 12*

04

Structure and Content

---

*p. 16*

05

Methodology

---

*p. 20*

06

Certificate

---

*p. 28*

# 01

# Introduction

The function of the educational and psycho-pedagogical guidance teams is developed jointly with the teaching staff of the education centers. The educational health of students who show cognitive deficiencies in learning will depend on their coordination. In addition, the diversity of abilities, interests and motivations of children will depend on this psychological team. Therefore, TECH offers a complete and rigorous program that addresses the characteristics of the different types of learning disorders, the protocols of care for specific cases under the formal education system and the role of the EOEPS, among other issues. This is a 100% online program, which is aimed at graduates in Psychology who wish to focus on this educational field, with flexible hours to set their own pace of study.



“

*Thanks to this Postgraduate Certificate, you will be able to analyze the changes and future perspectives of public policies and local management in order to intervene in them with guarantees of success"*

The psycho-pedagogical teams are essential in collaboration with the educational work of teachers in the classroom. Cooperation in the educational field with the different disciplines taught is necessary to be able to intervene assertively in cases of developmental disorders. Therefore, schools, both public and private, demand highly qualified specialists. This expert team must be able to deal with problems such as dyslexia, dysgraphia, dysorthography and even mathematics learning disorders, adapting to the technological environment implemented in schools.

This is the reason why TECH offers a complete and rigorous program aimed at graduates in Psychology who wish to specialize in the field of learning difficulties and developmental disorders, in order to promote the rehabilitation of those affected in the classroom. This instruction is possible through a 100% online modality, which has the support of a teaching team versed in the field of psychology and education in order to ensure proper theoretical and practical education of students.

In addition, the Postgraduate Certificate has a theoretical-practical approach, which will introduce students to developmental disorders and their classifications, basic learning processes and the role of the EOEPS. In addition, this program is highly dynamic, thanks to TECH's *Relearning* methodology. A method that allows the professional to advance progressively, while reducing the long hours of study so frequent in other orthodox teaching methods. In addition, the downloadable content of the virtual classroom will be available to the students, even after completion of the program.

This **Postgraduate Certificate in Introduction to Learning Disabilities and Developmental Disorders** contains the most complete and up-to-date program on the market. The most important features include:

- ♦ The development of case studies presented by experts in psychology and education
- ♦ The graphic, schematic, and practical contents with which they are created, provide scientific and practical information on the disciplines that are essential for professional practice
- ♦ Practical exercises where self-assessment can be used to improve learning.
- ♦ Its special emphasis on innovative methodologies
- ♦ Theoretical lessons, questions to the expert, debate forums on controversial topics, and individual reflection assignments
- ♦ Content that is accessible from any fixed or portable device with an Internet connection



*Enjoy a program that is based on the experience of its teachers and adapts to you so that you can follow it from anywhere"*

“

*Learn about the characteristics and consequences of dyslexia and dysgraphia at an early age"*

The program's teaching staff includes professionals from sector who contribute their work experience to this educational program, as well as renowned specialists from leading societies and prestigious universities.

The multimedia content, developed with the latest educational technology, will provide the professional with situated and contextual learning, i.e., a simulated environment that will provide immersive education programmed to learn in real situations.

This program is designed around Problem-Based Learning, whereby the professional must try to solve the different professional practice situations that arise throughout the program. For this purpose, the student will be assisted by an innovative interactive video system created by renowned and experienced experts.

*Be part of the current guidance teams in education centers to detect disorders associated with AD.*

*Discover now the new techniques and scientific evidence on the pathologies related to dysorthography and complete your development as a professional.*



# 02

## Objectives

The main objective of this Postgraduate Certificate in Introduction to Learning Difficulties and Developmental Disorders is to broaden and update the theoretical and practical knowledge of professionals specialized in Psychology so that they can foresee cases of AD, ADD, ADHD and other learning pathologies. In addition, the innovative teaching material offered by TECH in all its programs will bring students closer to the protocols of action in the classroom so that they can plan their professional careers, together with a teaching team with whom they can discuss and carry out an exhaustive monitoring of the subject.







“

*Research cases with learning difficulties in Mathematics in order to develop prevention programs in the educational field"*



## General Objectives

---

- Understand the neurobiological and cognitive bases involved in learning
- Know the different categories of LD in the formal and non-formal framework, their assessment and diagnosis
- Make reliable diagnoses and provide appropriate interventions in each psycho-educational setting
- Identify the differences in the pathologies related to AD and AMD
- Apply specific intervention techniques and programs for Learning Difficulties
- Know the function of the educational and psycho-pedagogical guidance teams in order to be part of this team in educational centers





## Specific Objectives

---

- ♦ Delve into the concepts of learning disabilities and developmental disorders
- ♦ Examine the main characteristics and associated disorders of dyslexia, dysgraphia and dysorthography
- ♦ Provide support to guidance teams in education centers, as well as specialized EOEPS

“

*Reach your goals thanks to  
TECH's innovative tools and the  
mentoring of great professionals  
versed in Psychology”*

03

# Course Management

TECH has relied on a team of professionals specialized in educational development disorders to transmit not only the theoretical knowledge of this degree, but also their practical experience. Thanks to their collaboration, students will enjoy personalized and individual tutorials and will also be able to discuss with teachers through the Virtual Classroom. This field experience is essential for the psychologist to obtain an education that meets the demands of the sector.



“

*It studies the basic processes of learning with the support of psychologists who have developed over the years in this profession with a focus on education"*

## Management



### Ms. Torres García, Cathaysa

- ♦ Dynamizadora de talleres infantojuveniles de Animación a la Lectura en PIALTE
- ♦ Educational psychologist and Early Childhood Education teacher at Centro Infantil Higopico
- ♦ Psychologist at Hamelín Children's Center
- ♦ Freelance Educational Psychologist
- ♦ University Lecturer
- ♦ Bachelor's Degree in Pedagogy, University of La Laguna
- ♦ Master's Degree in Educational Psychology at the University of La Laguna
- ♦ University Specialist in Early Childhood Care at the Antonio de Nebrija University

## Professors

### Ms. López, Ana Karina

- ♦ Psychologist, trainer and facilitator in the field of social participation of the elderly program of the Fundación la Caixa
- ♦ Clinical psychologist in the field of child and adolescent psychotherapy at the Psychological Office María Auxiliadora
- ♦ Graduate in Psychology at Arturo Michelena University
- ♦ Master's Degree in General Health Psychology at the University of La Laguna
- ♦ Certificate in Organizational Psychology and Human Resources at the University of Carabobo



# 04

## Structure and Content

The syllabus of this Postgraduate Certificate has been developed by a specialized teaching team whose main objective is to provide students with the most comprehensive content on AD as a diagnostic category. With a theoretical-practical approach, students will learn about the basic learning processes and the distinctive characteristics of AD, as well as evolutionary and school milestones in childhood and adolescence related to these pathologies, among other issues. In addition, the Relearning system, based on the repetition of content, facilitates the assimilation of content, making it constant and progressive.



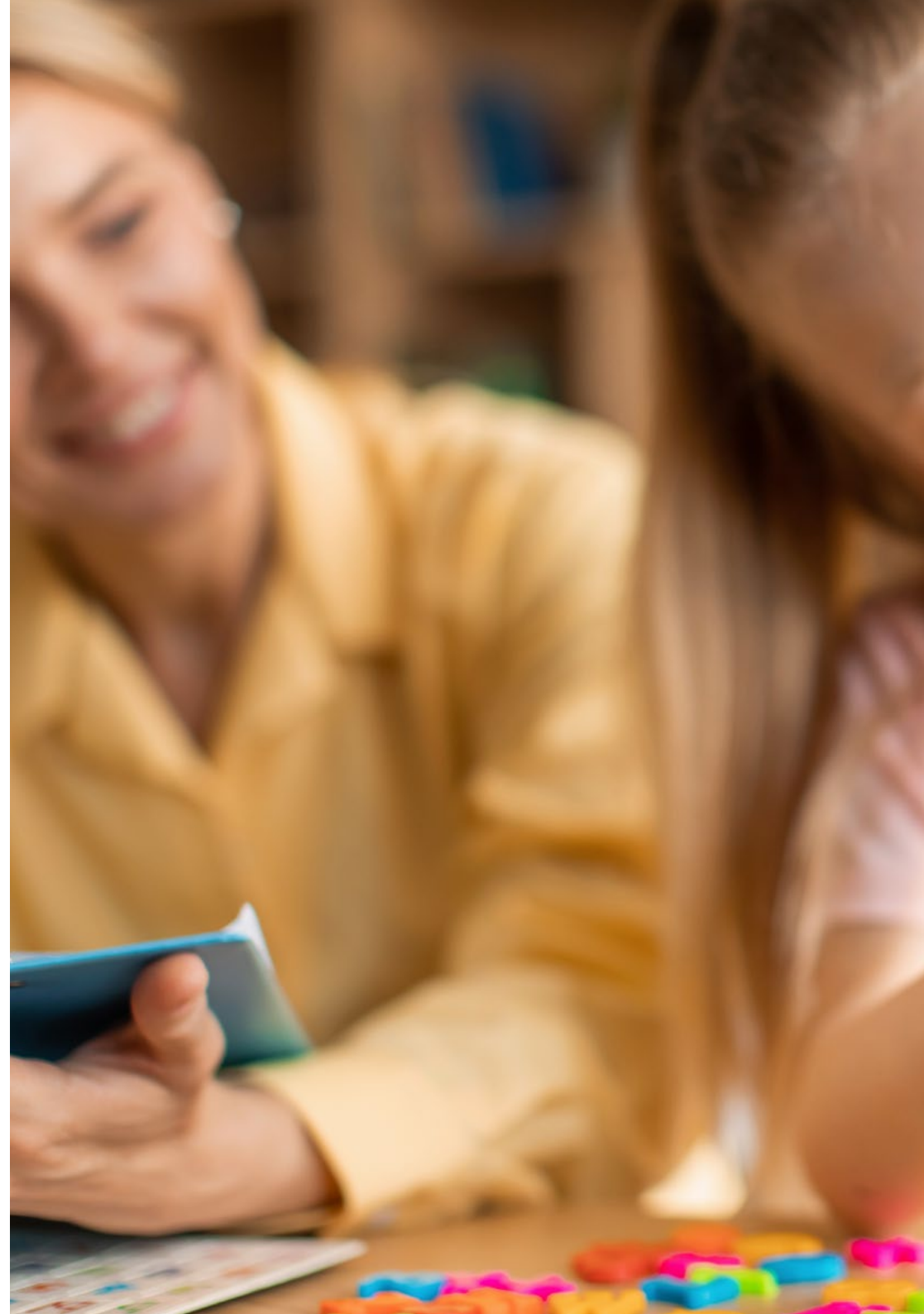


“

*Distribute the pace of study without having to dispense with other obligations in your personal or professional environment, thanks to TECH's 100% online mode"*

**Module 1. Introduction to Learning Difficulties and Developmental Disorders**

- 1.1. The Historical Evolution of Learning Difficulties
  - 1.1.1. Historical Background and Emergence of the Concept of Learning Difficulties
  - 1.1.2. Current Conceptualization and LD Considerations as a Diagnostic Category
  - 1.1.3. Areas of Application and Fields of Psychological Intervention in LD Today
- 1.2. Concept of Learning Difficulties and Developmental Disorders, Definition and Classification
  - 1.2.1. Learning Difficulty Concept and Definition as a Diagnostic Category
  - 1.2.2. Developmental Disorder Concept and Definition of Major Disorders
  - 1.2.3. The Relationship between Developmental Disorders and LD Classification
- 1.3. Basic Learning Processes and Distinctive Characteristics of LD Detection Principles
  - 1.3.1. Introduction to the Basic Learning Processes: Memorization, Attention and Perception
  - 1.3.2. Memory: Phases and Memory Types
  - 1.3.3. Attention and Perception: Attention Types
  - 1.3.4. Introduction to Detection and Distinguishing Characteristics of LDs
- 1.4. Developmental and School Characteristics and Milestones in Childhood and Adolescence in Relationship with LD
  - 1.4.1. Childhood Developmental Milestones
  - 1.4.2. Adolescent Developmental Milestones
  - 1.4.3. School Skills to Achieve in Childhood and Adolescence
  - 1.4.4. LD Detection Based on Milestone Detection or Unmet Competency
- 1.5. Dyslexia Concept and Characteristics
  - 1.5.1. Dyslexia Definition
  - 1.5.2. Dyslexia Main Characteristics
  - 1.5.3. Dyslexia and Related Disorders
  - 1.5.4. Research and Scientific Evidence on Dyslexia
- 1.6. Dysgraphia Concept and Characteristics
  - 1.6.1. Dysgraphia Definition
  - 1.6.2. Main Features of Dysgraphia
  - 1.6.3. Dysgraphia and Related Disorders
  - 1.6.4. Research and Scientific Evidence on Dysgraphia



- 1.7. Dysorthography: Concept and Characteristics
  - 1.7.1. Definition of Dysorthography
  - 1.7.2. Main Features of Dysorthography
  - 1.7.3. Dysorthography and Related Disorders
  - 1.7.4. Research and Scientific Evidence on Dysorthography
- 1.8. Math Learning Difficulty Concept
  - 1.8.1. MD Definition
  - 1.8.2. Main Features of Math Learning Difficulties (MD)
  - 1.8.3. MD and Related Disorders
  - 1.8.4. Research and Scientific Evidence on MD
  - 1.8.5. Classroom Detection and Initial Actions
  - 1.8.6. LD Prevention Programs in the Educational Setting
- 1.9. Introduction to Learning Difficulties in the Formal Education System
  - 1.9.1. Guidance Teams in Educational Centers: Organization and Operation
  - 1.9.2. Specialized EOEPS Guidance Teams. Organization and Operation
  - 1.9.3. LD Attention According to Categorization: Available Resources from Educational Centers

“

*Learn about the historical evolution of Learning Difficulties, thanks to the multimedia content provided by TECH”*

05

# Methodology

This academic program offers students a different way of learning. Our methodology uses a cyclical learning approach: **Relearning**.

This teaching system is used, for example, in the most prestigious medical schools in the world, and major publications such as the **New England Journal of Medicine** have considered it to be one of the most effective.



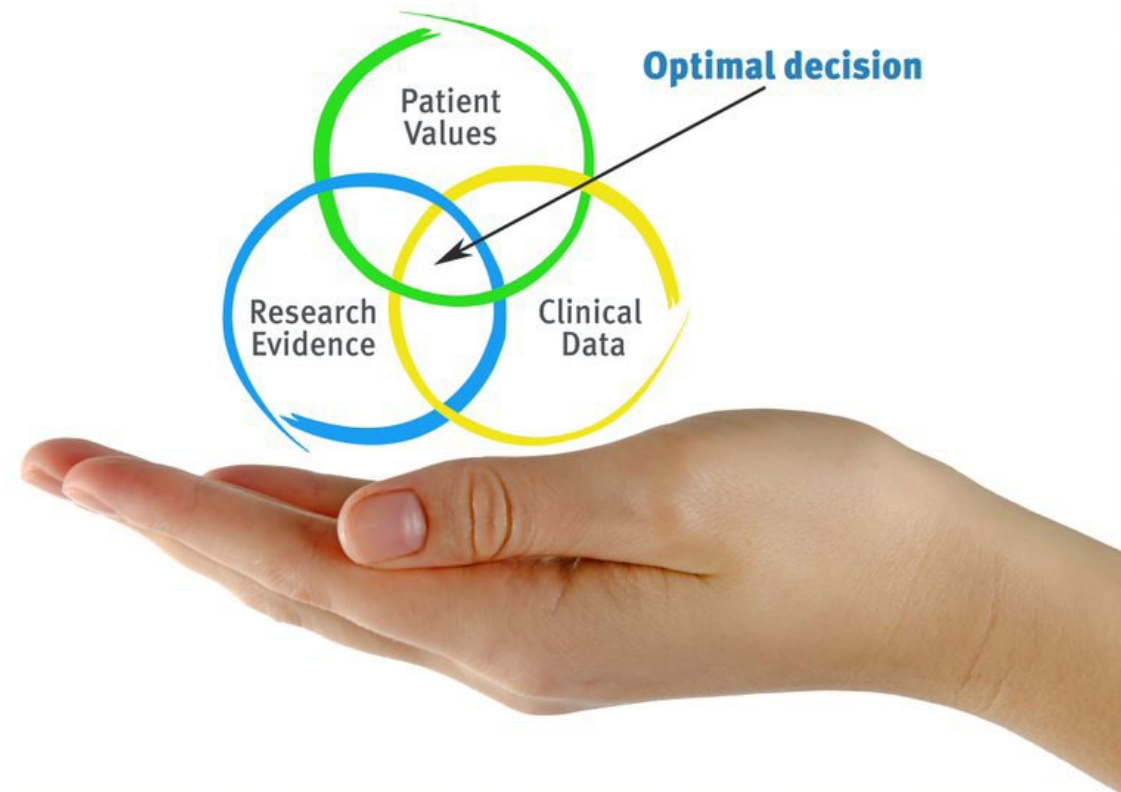
“

*Discover Relearning, a system that abandons conventional linear learning, to take you through cyclical teaching systems: a way of learning that has proven to be extremely effective, especially in subjects that require memorization"*

## At TECH we use the Case Method

What should a professional do in a given situation? Throughout the program, students will face multiple simulated clinical cases, based on real patients, in which they will have to do research, establish hypotheses, and ultimately resolve the situation. There is an abundance of scientific evidence on the effectiveness of the method. Specialists learn better, faster, and more sustainably over time.

*With TECH the psychologist experiences a way of learning that is shaking the foundations of traditional universities around the world.*



According to Dr. Gervas, the clinical case is the annotated presentation of a patient, or group of patients, which becomes a "case", an example or model that illustrates some peculiar clinical component, either because of its teaching power or because of its uniqueness or rarity. It is essential that the case is based on current professional life, trying to recreate the real conditions in the psychologist's professional practice.

“

*Did you know that this method was developed in 1912, at Harvard, for law students? The case method consisted of presenting students with real-life, complex situations for them to make decisions and justify their decisions on how to solve them. In 1924, Harvard adopted it as a standard teaching method”*

The effectiveness of the method is justified by four fundamental achievements:

1. Psychologists who follow this method not only master the assimilation of concepts, but also develop their mental capacity by means of exercises to evaluate real situations and apply their knowledge.
2. Learning is solidly translated into practical skills that allow the psychologist to better integrate knowledge into clinical practice.
3. Ideas and concepts are understood more efficiently, given that the example situations are based on real-life.
4. Students like to feel that the effort they put into their studies is worthwhile. This then translates into a greater interest in learning and more time dedicated to working on the course.



## Relearning Methodology

At TECH we enhance the case method with the best 100% online teaching methodology available: Relearning.

Our university is the first in the world to combine the study of clinical cases with a 100% online learning system based on repetition, combining a minimum of 8 different elements in each lesson, which is a real revolution compared to the simple study and analysis of cases.

*The psychologist will learn through real cases and by solving complex situations in simulated learning environments. These simulations are developed using state-of-the-art software to facilitate immersive learning.*





At the forefront of world teaching, the Relearning method has managed to improve the overall satisfaction levels of professionals who complete their studies, with respect to the quality indicators of the best online university (Columbia University).

This methodology has trained more than 150,000 psychologists with unprecedented success in all clinical specialties. Our pedagogical methodology is developed in a highly competitive environment, with a university student body with a strong socioeconomic profile and an average age of 43.5 years old.

*Relearning will allow you to learn with less effort and better performance, involving you more in your training, developing a critical mindset, defending arguments, and contrasting opinions: a direct equation for success.*

In our program, learning is not a linear process, but rather a spiral (learn, unlearn, forget, and re-learn). Therefore, we combine each of these elements concentrically.

The overall score obtained by our learning system is 8.01, according to the highest international standards.



This program offers the best educational material, prepared with professionals in mind:



#### Study Material

All teaching material is produced by the specialists who teach the course, specifically for the course, so that the teaching content is highly specific and precise.

These contents are then applied to the audiovisual format, to create the TECH online working method. All this, with the latest techniques that offer high quality pieces in each and every one of the materials that are made available to the student.



#### Latest Techniques and Procedures on Video

TECH introduces students to the latest techniques, to the latest educational advances, to the forefront of current psychology. All of this in direct contact with students and explained in detail so as to aid their assimilation and understanding. And best of all, you can watch the videos as many times as you like.



#### Interactive Summaries

The TECH team presents the contents attractively and dynamically in multimedia lessons that include audio, videos, images, diagrams, and concept maps in order to reinforce knowledge.

This exclusive educational system for presenting multimedia content was awarded by Microsoft as a "European Success Story".



#### Additional Reading

Recent articles, consensus documents and international guidelines, among others. In TECH's virtual library, students will have access to everything they need to complete their course.





#### Expert-Led Case Studies and Case Analysis

Effective learning ought to be contextual. Therefore, TECH presents real cases in which the expert will guide students, focusing on and solving the different situations: a clear and direct way to achieve the highest degree of understanding.



#### Testing & Retesting

We periodically evaluate and re-evaluate students' knowledge throughout the program, through assessment and self-assessment activities and exercises, so that they can see how they are achieving their goals.



#### Classes

There is scientific evidence suggesting that observing third-party experts can be useful.

Learning from an Expert strengthens knowledge and memory, and generates confidence in future difficult decisions.



#### Quick Action Guides

TECH offers the most relevant contents of the course in the form of worksheets or quick action guides. A synthetic, practical, and effective way to help students progress in their learning.



06

# Certificate

The Postgraduate Certificate in Introduction to Learning Difficulties and Developmental Disorders guarantees students, in addition to the most rigorous and up-to-date education, access to a Postgraduate Certificate issued by TECH Technological University.



The image features two graduation caps against a blue sky with light clouds. One cap is black with a gold tassel, and the other is maroon with a black tassel. The background is split into a white diagonal section and a magenta section.

“

*Successfully complete this program and receive your university qualification without having to travel or fill out laborious paperwork”*

This **Postgraduate Certificate in Introduction to Learning Difficulties and Developmental Disorders** contains the most complete and up-to-date program on the market.

After the student has passed the assessments, they will receive their corresponding **Postgraduate Certificate** issued by **TECH Technological University** via tracked delivery\*.

The certificate issued by **TECH Technological University** will reflect the qualification obtained in the Postgraduate Certificate, and meets the requirements commonly demanded by labor exchanges, competitive examinations, and professional career evaluation committees.

Title: **Postgraduate Certificate in Introduction to Learning Difficulties and Developmental Disorders**

Official N° of Hours: **150 h.**



\*Apostille Convention. In the event that the student wishes to have their paper certificate issued with an apostille, TECH EDUCATION will make the necessary arrangements to obtain it, at an additional cost.

future  
health confidence people  
education information tutors  
guarantee accreditation teaching  
institutions technology learning  
community commitment  
personalized service innovation  
knowledge present  
online training  
development language  
virtual classroom



## Postgraduate Certificate

### Introduction to Learning Difficulties and Developmental Disorders

- » Modality: online
- » Duration: 6 weeks
- » Certificate: TECH Technological University
- » Dedication: 16h/week
- » Schedule: at your own pace
- » Exams: online

# Postgraduate Certificate

## Introduction to Learning Difficulties and Developmental Disorders

