

# Postgraduate Certificate

History of Psychology:

Child and Adolescent  
Psychopathology



## Postgraduate Certificate

### History of Psychology: Child and Adolescent Psychopathology

- » Modality: online
- » Duration: 6 weeks
- » Certificate: TECH Global University
- » Credits: 6 ECTS
- » Schedule: at your own pace
- » Exams: online

Website: [www.techtute.com/us/psychology/postgraduate-certificate/history-psychology-child-adolescent-psychopathology](http://www.techtute.com/us/psychology/postgraduate-certificate/history-psychology-child-adolescent-psychopathology)

# Index

01

Introduction

---

*p. 4*

02

Objectives

---

*p. 8*

03

Structure and Content

---

*p. 12*

04

Methodology

---

*p. 16*

05

Certificate

---

*p. 24*

# 01

# Introduction

Data provided by the World Health Organization reveal that, in the world, one out of every seven young people between 10 and 19 years of age suffers from a mental disorder. The lack of concern for the health of the child and adolescent population is a thing of the past. This evolution has led to progress, but it is also necessary to be aware of it in order to understand the current reality and continue to make progress in this field. This course provides the psychology professional with the most exhaustive and recent knowledge about the historical development in the study of child and adolescent psychopathology. All this with innovative multimedia content that can be accessed at any time.





“

*Thanks to this Postgraduate Certificate you will obtain an advanced knowledge on the evolution of the study of Child and Adolescent Psychopathology”*

This Postgraduate Certificate is aimed primarily at psychology professionals who wish to improve their knowledge of the history of psychology, especially in the approach to child and adolescent psychopathology. For this purpose, it will have a specialized teaching team that has been selected by TECH due to its experience in this area and its human quality.

A program where the students will go through during the 6 weeks of duration of this course, the transition from what is considered normal and what is classified as pathological, the general etiology of disorders in childhood or the identification of symptoms of somatic and psychopathological disease at this stage of human development. All this with an actualized content shown in an innovative didactic material, according to the present academic teaching. This way, the psychology professionals will have at their disposal video summaries, complementary readings and simulations of real clinical cases that will help them to renew their knowledge and apply it in their daily practice.

TECH provides an excellent opportunity for psychology professionals who wish not only to renew their knowledge, but also to make quality teaching compatible with their work and/or personal responsibilities. This is possible thanks to the 100% online mode of this Postgraduate Certificate, where students will have access to the entire syllabus from the first day, accessing it through an electronic device with internet connection (computer, Tablet or cell phone) without fixed schedules and distributing the teaching load according to their needs.

This **Postgraduate Certificate in History of Psychology: Child and Adolescent Psychopathology** contains the most complete and up-to-date program on the market. The most important features include:

- ♦ Practical cases presented by experts in Psychology
- ♦ The graphic, schematic, and practical contents with which they are created, provide scientific and practical information on the disciplines that are essential for professional practice
- ♦ Practical exercises where self-assessment can be used to improve learning
- ♦ Its special emphasis on innovative methodologies
- ♦ Theoretical lessons, questions to the expert, debate forums on controversial topics, and individual reflection assignments
- ♦ Content that is accessible from any fixed or portable device with an Internet connection



*A 100% online course that you can access from and when you want with your computer or tablet"*

“

*Enroll in a degree that will allow you to renew your knowledge of the symptoms and signs of somatic and psychopathological disease”*

*An ideal academic program to combine your professional responsibilities with high-level teaching.*

*A teaching team will immerse you in the main etiologies of psychopathological disorders in childhood.*

The program's teaching staff includes professionals from the sector who contribute their work experience to this educational program, as well as renowned specialists from leading societies and prestigious universities.

Its multimedia content, developed with the latest educational technology, will provide the professional with situated and contextual learning, i.e., a simulated environment that will provide an immersion education programmed to learn in real situations.

The design of this program focuses on Problem-Based Learning, by means of which the professional must try to solve the different professional practice situations that are presented throughout the academic course. For this purpose, the student will be assisted by an innovative interactive video system created by renowned experts.



# 02

# Objectives

This Postgraduate Certificate provides the psychology professional with intensive content that will serve, at the end of this course, to have acquired a complete renewal of knowledge about the evolution of Child and Adolescent Psychopathology and its transcendence in the techniques and treatments applied nowadays. The expert teaching team in this area will be in charge of providing the most recent and accurate information on this field, so that students can achieve their objectives of actualizing their knowledge.





“

*The Relearning system will facilitate the acquisition of improved knowledge in a more agile way”*



## General Objectives

---

- Describe the therapeutic bond between the psychotherapist and the child
- Analyze the changes in behavior during the life cycle
- Differentiate between the evolutionary adaptation and adaptability of human beings
- Explain the framing of the family system in a single-therapist, single-patient psychotherapy
- Master psychodiagnosis and evaluation in the child and adolescent framework
- Control personality assessment at these ages
- Identify the role of the family in child and adolescent diagnosis
- Specify the intervention in clinical psychology at these age groups
- Develop sufficient skills to manage a child and adolescent clinic





## Specific Objectives

---

- ♦ Get to know the most influential currents of psychology in the history of the discipline of clinical psychology
- ♦ Study the origins of clinical child and adolescent psychology and the importance of the study of children and adolescents in the field of psychology
- ♦ Study and learn about the emergence of clinical child and adolescent psychology and the importance of the study of children and adolescents in the field of psychology
- ♦ Study the influential theories of child development in relation to their influence on child and adolescent psychopathology



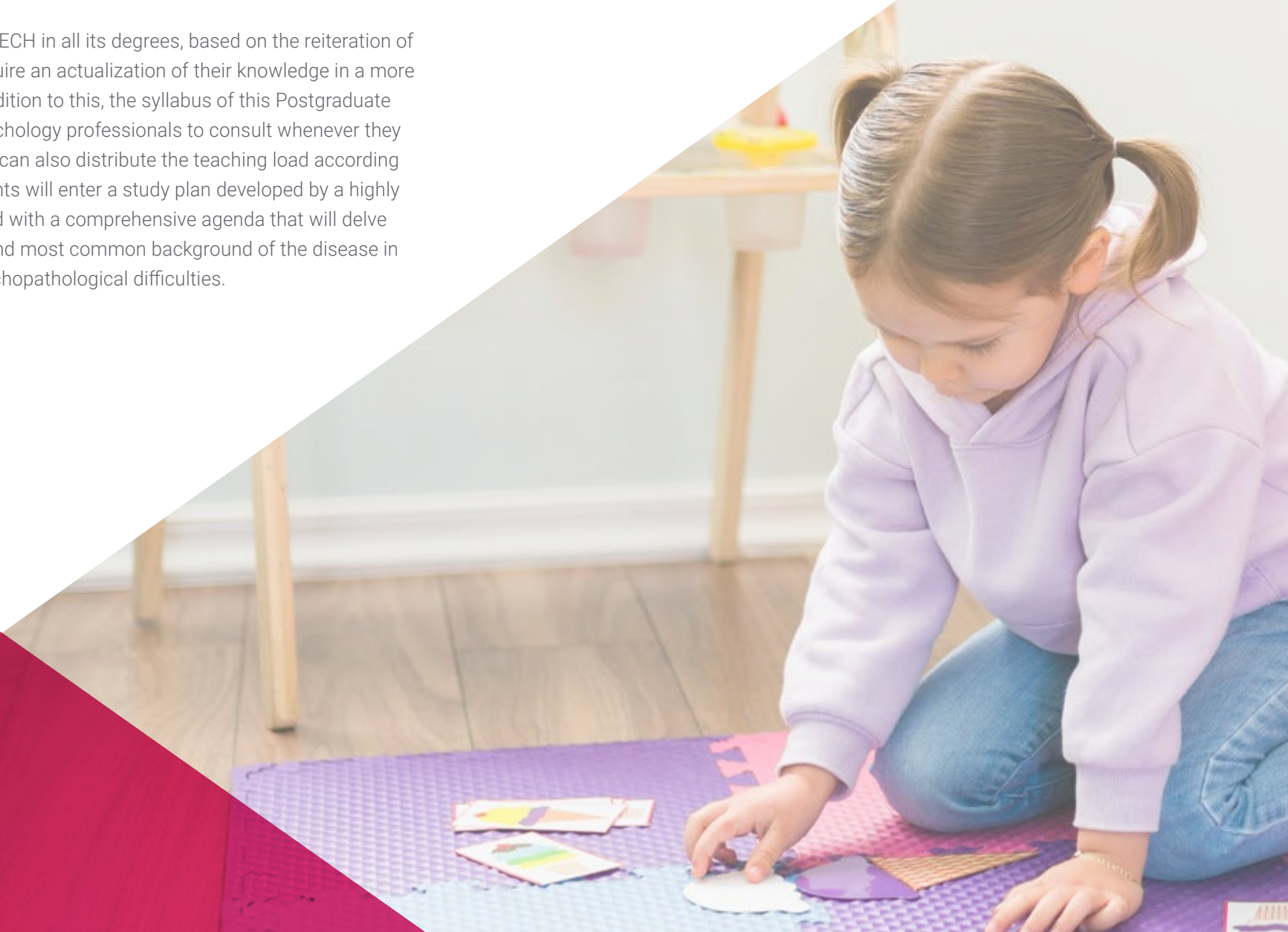
*A Postgraduate Certificate that delves into the most influential currents of psychology in the history of the discipline of clinical psychology*



# 03

## Structure and Content

The *Relearning* system offered by TECH in all its degrees, based on the reiteration of content, will allow students to acquire an actualization of their knowledge in a more natural and progressive way. In addition to this, the syllabus of this Postgraduate Certificate will be available for psychology professionals to consult whenever they consider it necessary, so that they can also distribute the teaching load according to their needs. This way, the students will enter a study plan developed by a highly competent professional in this field with a comprehensive agenda that will delve into the personal characteristics and most common background of the disease in childhood or major and minor psychopathological difficulties.





“

*Access the multimedia resource library with the most recent scientific studies related to child development theories”*

## Module 1. History of Psychology: Child and Adolescent Psychopathology

- 1.1. Background of General Psychology
  - 1.1.1. The Birth of Scientific Psychology
  - 1.1.2. Psychology In the first Half of the 20th Century
  - 1.1.3. Psychology In the Second Half of the 20th Century
- 1.2. Child psychology: Why study children?
  - 1.2.1. What is Child Psychology?
  - 1.2.2. Developmental Psychology
  - 1.2.3. Why Should We Study Children?
  - 1.2.4. Topics of Study in Developmental Psychology
- 1.3. Historical Evolution of Child and Adolescent Psychopathology
  - 1.3.1. What is Child and Adolescent Psychopathology?
  - 1.3.2. Historical Evolution of Child and Adolescent Psychopathology
  - 1.3.3. Methodological Foundations of Child Psychopathology
- 1.4. Normal Psychological Development
  - 1.4.1. What is Normal Psychological Development?
  - 1.4.2. Factors Influencing Normal Psychological Development
- 1.5. Theories of Child Development
  - 1.5.1. What Are Child Development Theories?
  - 1.5.2. Main Theories of Child Development
- 1.6. Evolution and Transitions between Normal and Pathological
  - 1.6.1. What is Normal?
  - 1.6.2. What is a Psychopathological Problem?
  - 1.6.3. Transitions between Normal and Pathological
- 1.7. General Etiology of Psychopathological Disorders in Childhood
  - 1.7.1. Introduction and Concept of "Etiology"
  - 1.7.2. Main Etiologies of Psychopathological Disorders in Childhood



- 1.8. Understanding Symptoms in Child Psychopathology
  - 1.8.1. Concept of Symptoms and Signs of Somatic and Psychopathological Illness
  - 1.8.2. How to Identify Symptoms in Child Psychopathology
  - 1.8.3. Possible Masks of Childhood and Adolescent Psychopathology
- 1.9. Personal Characteristics and Most Common History of the Disease in Childhood
  - 1.9.1. Background of Disease in the Childhood
  - 1.9.2. Inheritance-Environment
  - 1.9.3. Personal Characteristics Influencing the Development of Disease in Childhood
- 1.10. Major or Minor Psychopathological Problems and Difficulties
  - 1.10.1. Minor Psychopathological Problems
  - 1.10.2. Major Psychopathological Problems



*Renew your knowledge with this Postgraduate Certificate on major psychopathological problems"*



04

# Methodology

This academic program offers students a different way of learning. Our methodology uses a cyclical learning approach: **Relearning**.

This teaching system is used, for example, in the most prestigious medical schools in the world, and major publications such as the **New England Journal of Medicine** have considered it to be one of the most effective.





“

*Discover Relearning, a system that abandons conventional linear learning, to take you through cyclical teaching systems: a way of learning that has proven to be extremely effective, especially in subjects that require memorization"*

## At TECH we use the Case Method

What should a professional do in a given situation? Throughout the program, students will face multiple simulated clinical cases, based on real patients, in which they will have to do research, establish hypotheses, and ultimately resolve the situation. There is an abundance of scientific evidence on the effectiveness of the method. Specialists learn better, faster, and more sustainably over time.

*With TECH the psychologist experiences a way of learning that is shaking the foundations of traditional universities around the world.*



According to Dr. Gérvas, the clinical case is the annotated presentation of a patient, or group of patients, which becomes a "case", an example or model that illustrates some peculiar clinical component, either because of its teaching power or because of its uniqueness or rarity. It is essential that the case is based on current professional life, trying to recreate the real conditions in the psychologist's professional practice.

“

*Did you know that this method was developed in 1912, at Harvard, for law students? The case method consisted of presenting students with real-life, complex situations for them to make decisions and justify their decisions on how to solve them. In 1924, Harvard adopted it as a standard teaching method”*

The effectiveness of the method is justified by four fundamental achievements:

1. Psychologists who follow this method not only master the assimilation of concepts, but also develop their mental capacity by means of exercises to evaluate real situations and apply their knowledge.
2. Learning is solidly translated into practical skills that allow the psychologist to better integrate knowledge into clinical practice.
3. Ideas and concepts are understood more efficiently, given that the example situations are based on real-life.
4. Students like to feel that the effort they put into their studies is worthwhile. This then translates into a greater interest in learning and more time dedicated to working on the course.



## Relearning Methodology

At TECH we enhance the case method with the best 100% online teaching methodology available: Relearning.

Our university is the first in the world to combine the study of clinical cases with a 100% online learning system based on repetition, combining a minimum of 8 different elements in each lesson, which is a real revolution compared to the simple study and analysis of cases.

*The psychologist will learn through real cases and by solving complex situations in simulated learning environments. These simulations are developed using state-of-the-art software to facilitate immersive learning.*



At the forefront of world teaching, the Relearning method has managed to improve the overall satisfaction levels of professionals who complete their studies, with respect to the quality indicators of the best online university (Columbia University).

This methodology has trained more than 150,000 psychologists with unprecedented success in all clinical specialties. Our pedagogical methodology is developed in a highly competitive environment, with a university student body with a strong socioeconomic profile and an average age of 43.5 years old.

*Relearning will allow you to learn with less effort and better performance, involving you more in your training, developing a critical mindset, defending arguments, and contrasting opinions: a direct equation for success.*

In our program, learning is not a linear process, but rather a spiral (learn, unlearn, forget, and re-learn). Therefore, we combine each of these elements concentrically.

The overall score obtained by our learning system is 8.01, according to the highest international standards.



This program offers the best educational material, prepared with professionals in mind:



#### Study Material

All teaching material is produced by the specialists who teach the course, specifically for the course, so that the teaching content is highly specific and precise.

These contents are then applied to the audiovisual format, to create the TECH online working method. All this, with the latest techniques that offer high quality pieces in each and every one of the materials that are made available to the student.



#### Latest Techniques and Procedures on Video

TECH introduces students to the latest techniques, to the latest educational advances, to the forefront of current psychology. All of this in direct contact with students and explained in detail so as to aid their assimilation and understanding. And best of all, you can watch the videos as many times as you like.



#### Interactive Summaries

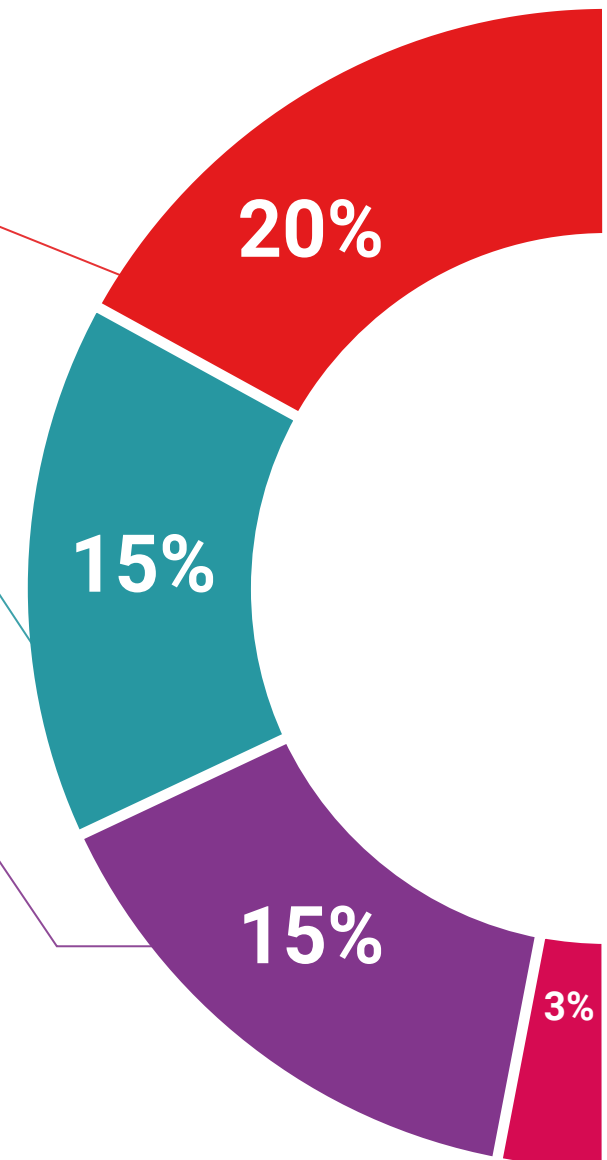
The TECH team presents the contents attractively and dynamically in multimedia lessons that include audio, videos, images, diagrams, and concept maps in order to reinforce knowledge.

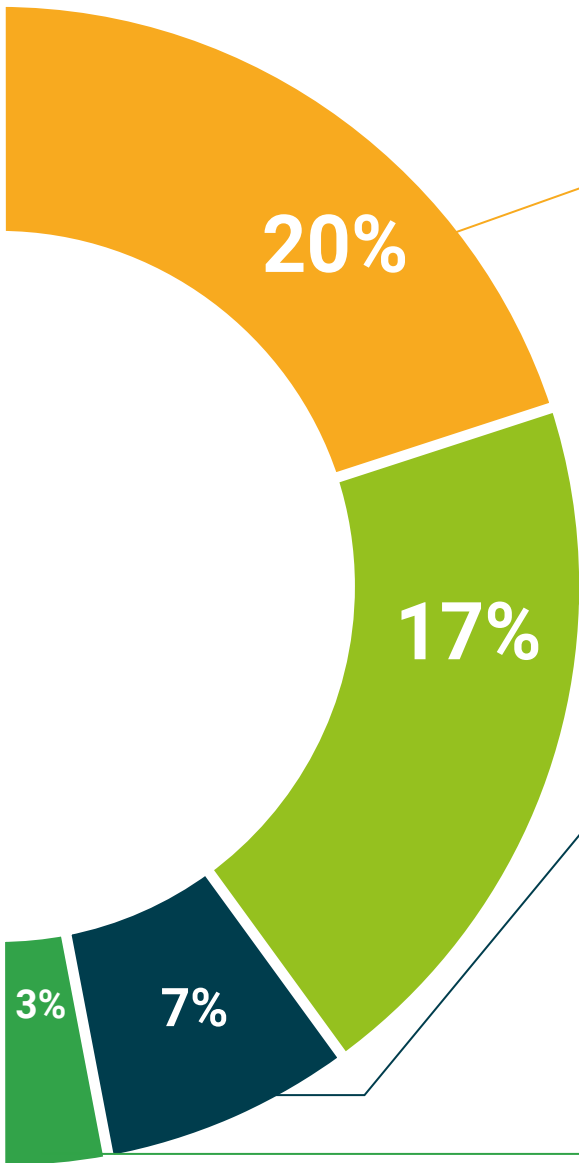
This exclusive educational system for presenting multimedia content was awarded by Microsoft as a "European Success Story".



#### Additional Reading

Recent articles, consensus documents and international guidelines, among others. In TECH's virtual library, students will have access to everything they need to complete their course.





**Expert-Led Case Studies and Case Analysis**

Effective learning ought to be contextual. Therefore, TECH presents real cases in which the expert will guide students, focusing on and solving the different situations: a clear and direct way to achieve the highest degree of understanding.



**Testing & Retesting**

We periodically evaluate and re-evaluate students' knowledge throughout the program, through assessment and self-assessment activities and exercises, so that they can see how they are achieving their goals.



**Classes**

There is scientific evidence suggesting that observing third-party experts can be useful.

Learning from an Expert strengthens knowledge and memory, and generates confidence in future difficult decisions.



**Quick Action Guides**

TECH offers the most relevant contents of the course in the form of worksheets or quick action guides. A synthetic, practical, and effective way to help students progress in their learning.



05

# Certificate

The Postgraduate Certificate in History of Psychology: Child and Adolescent Psychopathology guarantees students, in addition to the most rigorous and up-to-date education, access to a Postgraduate Certificate issued by TECH Global University.





“

*Successfully complete this program  
and receive your university qualification  
without having to travel or fill out  
laborious paperwork”*

This program will allow you to obtain your **Postgraduate Certificate in History of Psychology: Child and Adolescent Psychopathology** endorsed by **TECH Global University**, the world's largest online university.

**TECH Global University** is an official European University publicly recognized by the Government of Andorra ([official bulletin](#)). Andorra is part of the European Higher Education Area (EHEA) since 2003. The EHEA is an initiative promoted by the European Union that aims to organize the international training framework and harmonize the higher education systems of the member countries of this space. The project promotes common values, the implementation of collaborative tools and strengthening its quality assurance mechanisms to enhance collaboration and mobility among students, researchers and academics.

This **TECH Global University** title is a European program of continuing education and professional updating that guarantees the acquisition of competencies in its area of knowledge, providing a high curricular value to the student who completes the program.

Title: **Postgraduate Certificate in History of Psychology: Child and Adolescent Psychopathology**

Modality: **online**

Duration: **6 weeks**

Accreditation: **6 ECTS**



\*Apostille Convention. In the event that the student wishes to have their paper diploma issued with an apostille, TECH Global University will make the necessary arrangements to obtain it, at an additional cost.



## Postgraduate Certificate

History of Psychology:  
Child and Adolescent  
Psychopathology

- » Modality: online
- » Duration: 6 weeks
- » Certificate: TECH Global University
- » Credits: 6 ECTS
- » Schedule: at your own pace
- » Exams: online

# Postgraduate Certificate

History of Psychology:  
Child and Adolescent  
Psychopathology

