

Postgraduate Certificate Education of Intelligence and Affectivity



Postgraduate Certificate Education of Intelligence and Affectivity

- » Modality: online
- » Duration: 6 weeks
- » Certificate: TECH Global University
- » Credits: 6 ECTS
- » Schedule: at your own pace
- » Exams: online

Website: www.techtitute.com/us/psychology/postgraduate-certificate/education-intelligence-affectivity

Index

01

Introduction

p. 4

02

Objectives

p. 8

03

Structure and Content

p. 12

04

Methodology

p. 16

05

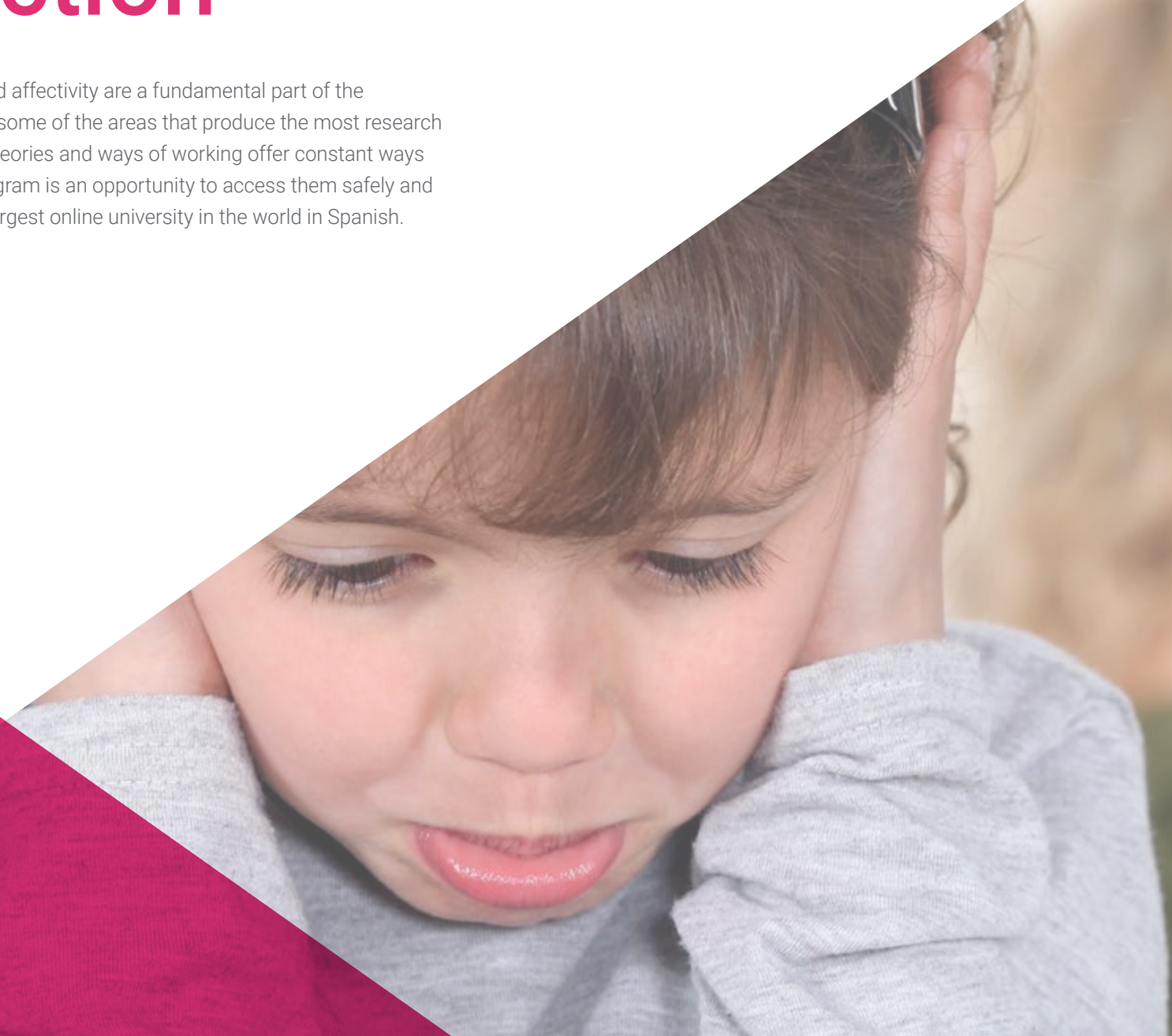
Certificate

p. 24

01

Introduction

The development of intelligence and affectivity are a fundamental part of the psychologist's work and, therefore, some of the areas that produce the most research and advances in this sector. New theories and ways of working offer constant ways of updating professionals. This program is an opportunity to access them safely and completely with the quality of the largest online university in the world in Spanish.



“

This Postgraduate Certificate will broaden your horizons as a psychologist and will allow you to grow personally and professionally”

This Postgraduate Certificate provides extensive knowledge in models and advanced techniques in the intervention in everything related to the Education of Intelligence and Affectivity, from psychological intervention. To do this, you will have a faculty that stands out for its extensive professional experience in the different areas in which psychology is developed and in different sectors of the population.

Throughout this program, you will learn the current and newest approaches on this topic. Learn the characteristics and fundamental aspects of pharmacology.

We will not only take you through the theoretical knowledge we offer, but we will introduce you to another way of studying and learning, one which is simpler, more organic and more efficient. We will work to keep you motivated and to develop your passion for learning, helping you to think and develop critical thinking skills.

A high-level step that will become a process of improvement, not only on a professional level, but also on a personal level.

This **Postgraduate Certificate in Education of Intelligence and Affectivity** contains the most complete and up-to-date program on the market. The most important features include:

- ◆ The development of 100 practical cases presented by experts
- ◆ The graphic, schematic, and practical contents provide students with scientific and practical information on the disciplines that are essential for Psychologist
- ◆ New developments and innovations in the different areas of psychology
- ◆ Practical exercises where self-assessment can be used to improve learning
- ◆ Algorithm-based interactive learning system for decision-making in the situations that are presented to the student
- ◆ Special emphasis on cutting-edge methodologies
- ◆ Theoretical lessons, questions to the expert, debate forums on controversial topics, and individual reflection assignments
- ◆ Content that is accessible from any fixed or portable device with an Internet connection



A program created for professionals who aspire to excellence and that will allow them to acquire new skills and strategies in a smooth and effective way”

“

A totally efficiency-focused approach that will allow you to learn in a real, constant and efficient way”

Forget the obsolete ways of studying the traditional way and make your learning easier and more motivating.

This Postgraduate Certificate makes the difference between a professional with a lot of knowledge and a professional who knows how to apply it in a real way.

It includes a very broad teaching staff of professionals belonging to the field of psychology, who pour into this program the experience of their work, in addition to recognized specialists of reference societies and prestigious universities

The multimedia content, developed with the latest educational technology, will provide the professional with situated and contextual learning, i.e., a simulated environment that will provide an immersive program designed to learn in real situations.

This program is designed around Problem-Based Learning, whereby the student must try to solve the different professional practice situations that arise throughout the program. For this purpose, the professional will be assisted by an innovative interactive video system created by renowned and experienced experts.

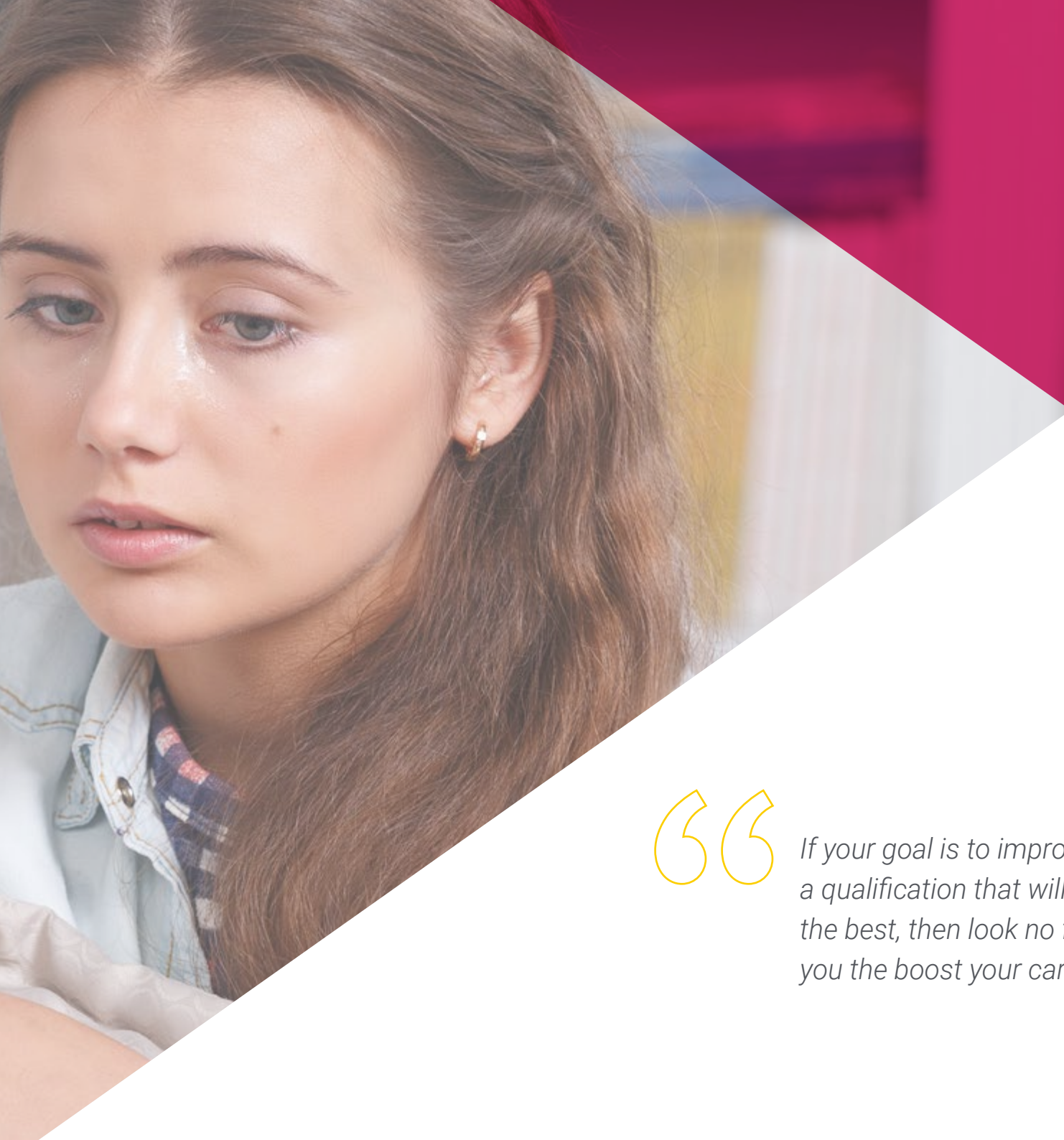


02

Objectives

The objectives of this program have been established as a guide for the development of the entire course, with the specific mission of offering students very intensive training that will really boost their professional progression. A journey of personal growth that will take you to the top in your intervention as a psychologist.





“

If your goal is to improve in your profession, to acquire a qualification that will enable you to compete among the best, then look no further. This program will give you the boost your career needs”



General Objective

- ◆ Train professionals qualified in the practice of Education of Intelligence and Affectivity, who can intervene with real working capacity and optimal results, supported by the most updated and useful theoretical and practical knowledge for their profession

“

This Postgraduate Certificate is aimed at all psychologists who want to achieve a high level of specialization in the field of Education of Intelligence and Affectivity”





Specific Objectives

- ◆ Understand the definition and uses of Emotional Intelligence
- ◆ Understand the components, evolution, and the way in which EQ is evaluated
- ◆ Differentiate personal relationships in Emotional Intelligence

03

Structure and Content

The structure of the contents has been designed by a team of professional experts in Psychology, in Education of Intelligence and Affectivity, aware of the relevance of the current relevance of the training in order to deepen the area of knowledge and make publications of academic quality.



“

This Postgraduate Certificate in Education of Intelligence and Affectivity contains the most complete and updated scientific program on the market”

Module 1. Education of Intelligence and Affectivity

- 1.1. Emotional Intelligence Concept
 - 1.1.1. Introduction to Intelligence
 - 1.1.2. Approach to Multiple Intelligences
 - 1.1.3. Defining Emotional Intelligence
 - 1.1.4. Characteristics of Emotional Intelligence
 - 1.1.5. Relationship between Emotional Intelligence and Academic Performance
- 1.2. Emotional Intelligence Theories and Models
 - 1.2.1. Discovering the basis of intelligence
 - 1.2.2. The origins of Emotional Intelligence
 - 1.2.3. New contributions of Emotional Intelligence
- 1.3. Components of Emotional Intelligence
 - 1.3.1. Defining the Elements of Emotional Intelligence
 - 1.3.2. Sensation in Emotional Intelligence
 - 1.3.3. Attention in Emotional Intelligence
 - 1.3.4. The Perception of Emotional Intelligence
 - 1.3.5. Memory in Emotional Intelligence
 - 1.3.6. The Motivation in Emotional Intelligence
 - 1.3.7. Language in Emotional Intelligence
- 1.4. Physiology of Emotional Intelligence
 - 1.4.1. Neural basis
 - 1.4.2. Brain and Intelligence
 - 1.4.3. Brain and Emotion
 - 1.4.4. Brain and Emotional Intelligence
- 1.5. Evolution of Emotional Intelligence
 - 1.5.1. Evolution of Intelligence
 - 1.5.2. Emotional development
 - 1.5.3. Development of Emotional Intelligence
- 1.6. Emotional Intelligence Assessment
 - 1.6.1. Features of the evaluation
 - 1.6.2. Intelligence Quotient Evaluation
 - 1.6.3. Emotional Intelligence Assessment



- 1.7. Emotional Intelligence Gender Differences
 - 1.7.1. Male-female genetic differences
 - 1.7.2. The role of hormones in gender differentiation
 - 1.7.3. Emotional differences between men and women
 - 1.7.4. Gender differences in Compassion
 - 1.7.5. Gender Differences in Empathy
- 1.8. The social influence of Emotional Intelligence
 - 1.8.1. Emotional disorders in adolescence
 - 1.8.2. Emotional problems within the classroom
 - 1.8.3. Emotional Intelligence applied to adolescents
 - 1.8.4. Emotional Intelligence Training in the Classroom
- 1.9. Family and Emotional Intelligence
 - 1.9.1. The individual and family
 - 1.9.2. Intelligence and the family
 - 1.9.3. Parenting styles
 - 1.9.4. Family and emotional issues
 - 1.9.5. Emotional Intelligence within the family
- 1.10. Myths and Truths of Emotional Intelligence
 - 1.10.1. Emotional Intelligence and physical health: myths and realities
 - 1.10.2. Emotional Intelligence and mental health: myths and facts
 - 1.10.3. Alexithymia, the absence of Emotional Intelligence: Myths and Realities

“*Our syllabus has been designed with teaching effectiveness in mind: so that you learn faster, more efficiently, and on a more permanent basis”*



04

Methodology

This academic program offers students a different way of learning. Our methodology uses a cyclical learning approach: **Relearning**.

This teaching system is used, for example, in the most prestigious medical schools in the world, and major publications such as the **New England Journal of Medicine** have considered it to be one of the most effective.



“

Discover Relearning, a system that abandons conventional linear learning, to take you through cyclical teaching systems: a way of learning that has proven to be extremely effective, especially in subjects that require memorization”

At TECH we use the Case Method

What should a professional do in a given situation? Throughout the program, students will face multiple simulated clinical cases, based on real patients, in which they will have to do research, establish hypotheses, and ultimately resolve the situation. There is an abundance of scientific evidence on the effectiveness of the method. Specialists learn better, faster, and more sustainably over time.

With TECH the psychologist experiences a way of learning that is shaking the foundations of traditional universities around the world.



According to Dr. Gérvas, the clinical case is the annotated presentation of a patient, or group of patients, which becomes a “case”, an example or model that illustrates some peculiar clinical component, either because of its teaching power or because of its uniqueness or rarity. It is essential that the case is based on current professional life, trying to recreate the real conditions in the psychologist's professional practice.

“

Did you know that this method was developed in 1912, at Harvard, for law students? The case method consisted of presenting students with real-life, complex situations for them to make decisions and justify their decisions on how to solve them. In 1924, Harvard adopted it as a standard teaching method”

The effectiveness of the method is justified by four fundamental achievements:

1. Psychologists who follow this method not only master the assimilation of concepts, but also develop their mental capacity by means of exercises to evaluate real situations and apply their knowledge.
2. Learning is solidly translated into practical skills that allow the psychologist to better integrate knowledge into clinical practice.
3. Ideas and concepts are understood more efficiently, given that the example situations are based on real-life.
4. Students like to feel that the effort they put into their studies is worthwhile. This then translates into a greater interest in learning and more time dedicated to working on the course.



Relearning Methodology

At TECH we enhance the case method with the best 100% online teaching methodology available: Relearning.

Our university is the first in the world to combine the study of clinical cases with a 100% online learning system based on repetition, combining a minimum of 8 different elements in each lesson, which is a real revolution compared to the simple study and analysis of cases.

The psychologist will learn through real cases and by solving complex situations in simulated learning environments. These simulations are developed using state-of-the-art software to facilitate immersive learning.



At the forefront of world teaching, the Relearning method has managed to improve the overall satisfaction levels of professionals who complete their studies, with respect to the quality indicators of the best online university (Columbia University).

This methodology has trained more than 150,000 psychologists with unprecedented success in all clinical specialties. Our pedagogical methodology is developed in a highly competitive environment, with a university student body with a strong socioeconomic profile and an average age of 43.5 years old.

Relearning will allow you to learn with less effort and better performance, involving you more in your training, developing a critical mindset, defending arguments, and contrasting opinions: a direct equation for success.

In our program, learning is not a linear process, but rather a spiral (learn, unlearn, forget, and re-learn). Therefore, we combine each of these elements concentrically.

The overall score obtained by our learning system is 8.01, according to the highest international standards.



This program offers the best educational material, prepared with professionals in mind:



Study Material

All teaching material is produced by the specialists who teach the course, specifically for the course, so that the teaching content is highly specific and precise.

These contents are then applied to the audiovisual format, to create the TECH online working method. All this, with the latest techniques that offer high quality pieces in each and every one of the materials that are made available to the student.



Latest Techniques and Procedures on Video

TECH introduces students to the latest techniques, to the latest educational advances, to the forefront of current psychology. All of this in direct contact with students and explained in detail so as to aid their assimilation and understanding. And best of all, you can watch the videos as many times as you like.



Interactive Summaries

The TECH team presents the contents attractively and dynamically in multimedia lessons that include audio, videos, images, diagrams, and concept maps in order to reinforce knowledge.

This exclusive educational system for presenting multimedia content was awarded by Microsoft as a "European Success Story".



Additional Reading

Recent articles, consensus documents and international guidelines, among others. In TECH's virtual library, students will have access to everything they need to complete their course.





Expert-Led Case Studies and Case Analysis

Effective learning ought to be contextual. Therefore, TECH presents real cases in which the expert will guide students, focusing on and solving the different situations: a clear and direct way to achieve the highest degree of understanding.



Testing & Retesting

We periodically evaluate and re-evaluate students' knowledge throughout the program, through assessment and self-assessment activities and exercises, so that they can see how they are achieving their goals.



Classes

There is scientific evidence suggesting that observing third-party experts can be useful. Learning from an Expert strengthens knowledge and memory, and generates confidence in future difficult decisions.



Quick Action Guides

TECH offers the most relevant contents of the course in the form of worksheets or quick action guides. A synthetic, practical, and effective way to help students progress in their learning.



05

Certificate

The Postgraduate Certificate in Education of Intelligence and Affectivity guarantees students, in addition to the most rigorous and up-to-date education, access to a Postgraduate Certificate issued by TECH Global University.



“

Successfully complete this program and receive your university qualification without having to travel or fill out laborious paperwork”

This program will allow you to obtain your **Postgraduate Certificate in Education of Intelligence and Affectivity** endorsed by **TECH Global University**, the world's largest online university.

TECH Global University is an official European University publicly recognized by the Government of Andorra ([official bulletin](#)). Andorra is part of the European Higher Education Area (EHEA) since 2003. The EHEA is an initiative promoted by the European Union that aims to organize the international training framework and harmonize the higher education systems of the member countries of this space. The project promotes common values, the implementation of collaborative tools and strengthening its quality assurance mechanisms to enhance collaboration and mobility among students, researchers and academics.

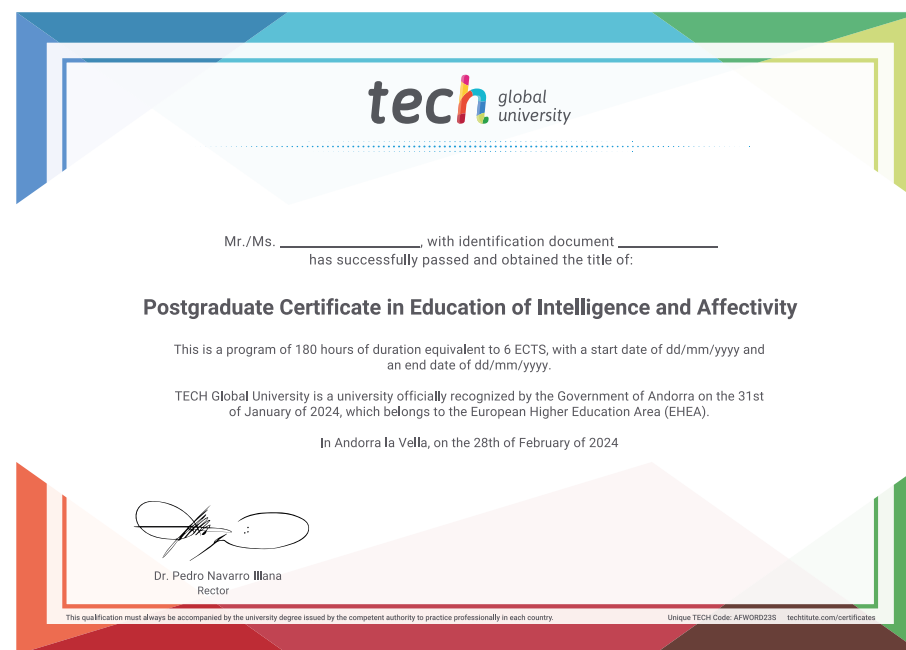
This **TECH Global University** title is a European program of continuing education and professional updating that guarantees the acquisition of competencies in its area of knowledge, providing a high curricular value to the student who completes the program.

Title: **Postgraduate Certificate in Education of Intelligence and Affectivity**

Modality: **online**

Duration: **6 weeks**

Accreditation: **6 ECTS**



*Apostille Convention. In the event that the student wishes to have their paper certificate issued with an apostille, TECH Global University will make the necessary arrangements to obtain it, at an additional cost.

future

health confidence people

education information tutors

guarantee accreditation teaching

institutions technology learning

community commitment

tech global
university

personalized service innovation

knowledge present
Education of Intelligence
and Affectivity

online track

development languages

virtual classroom

- » Modality: online
- » Duration: 6 weeks
- » Certificate: TECH Global University
- » Credits: 6 ECTS
- » Schedule: at your own pace
- » Exams: online

Postgraduate Certificate Education of Intelligence and Affectivity