

Postgraduate Certificate

Clinical Features and Manifestations of Eating Disorders





Postgraduate Certificate Clinical Features and Manifestations of Eating Disorders

- » Modality: online
- » Duration: 6 weeks
- » Certificate: TECH Technological University
- » Dedication: 16h/week
- » Schedule: at your own pace
- » Exams: online

Website: www.techtitute.com/us/postgraduate-certificate/clinical-features-manifestations-eating-disorders

Index

01

Introduction

p. 4

02

Objectives

p. 8

03

Course Management

p. 12

04

Structure and Content

p. 16

05

Methodology

p. 20

06

Certificate

p. 28

01

Introduction

The reality of eating disorders has been changing over the last thirty years. Nowadays, there are many different groups of individuals who are very concerned about their figure, both women and men, although eating disorders are still more common in women. Anorexia Nervosa (AN) or Bulimia Nervosa (BN) generally affect more women, although the same is not true for Bigorexia, where the percentage of men is three times that of women.



“

Improve your knowledge through this program, where you will find the best didactic material with real clinical cases. Learn here about the latest advances in the specialty to be able to perform a quality psychological praxis”

Eating disorders represent a challenge for the health sector, due to their increasing impact and the number of people exposed, mostly adolescents and young adults. The disruptions are often manifested through body image, weight, behavior and aggressiveness. However, to manage these disturbances, a professional with extensive knowledge in behavioral management and the latest updates that facilitate the treatment of the sick person is required.

For this reason, TECH has created this program so that the professional acquires a series of competencies that allow them to define a course of action for each specific case. In order to identify a priori the main disorders and manage them from different methodologies. It will also delve into fundamental aspects of personality and those complications that require clinical treatment.

This is a completely online program, designed according to the current needs of the sector. Therefore, the student will find within it, a compendium of up-to-date and innovative information on the management of disorders through the clinical field. It is also worth mentioning the amount of audiovisual resources offered, such as, for example, readings, exercises based on real cases and interactive videos. Therefore, this Postgraduate Certificate is presented as a unique opportunity, since the psychologist will not need to go to any on-site center and will be able to develop the program from the comfort of their home, needing only a device with an Internet connection.

This **Postgraduate Certificate in Clinical Features and Manifestations of Eating Disorders** contains the most complete and up-to-date program on the market. The most important features include:

- ♦ Development of clinical cases presented by courses in psychology
- ♦ The graphic, schematic, and practical contents with which they are created, provide scientific and practical information on the disciplines that are essential for professional practice
- ♦ Updates on the diagnostic and therapeutic on the Clinical Features and Manifestations of Eating Disorders
- ♦ Decision-making on the clinical situations raised
- ♦ With a special emphasis on evidence-based medicine and research methodologies in emergencies
- ♦ All of this will be complemented by theoretical lessons, questions to the expert, debate forums on controversial topics, and individual reflection assignments
- ♦ Content that is accessible from any fixed or portable device with an Internet connection

“Expand your knowledge through the Postgraduate Certificate in Clinical Features and Manifestations of Eating Disorders in a practical way and adapted to your needs”

“

This Postgraduate Certificate may be the best investment you can make when selecting a refresher program, for two reasons: in addition to updating your knowledge in Clinical Features and Manifestations of Eating Disorders, you will obtain a qualification from the largest digital university in the world, TECH Technological University"

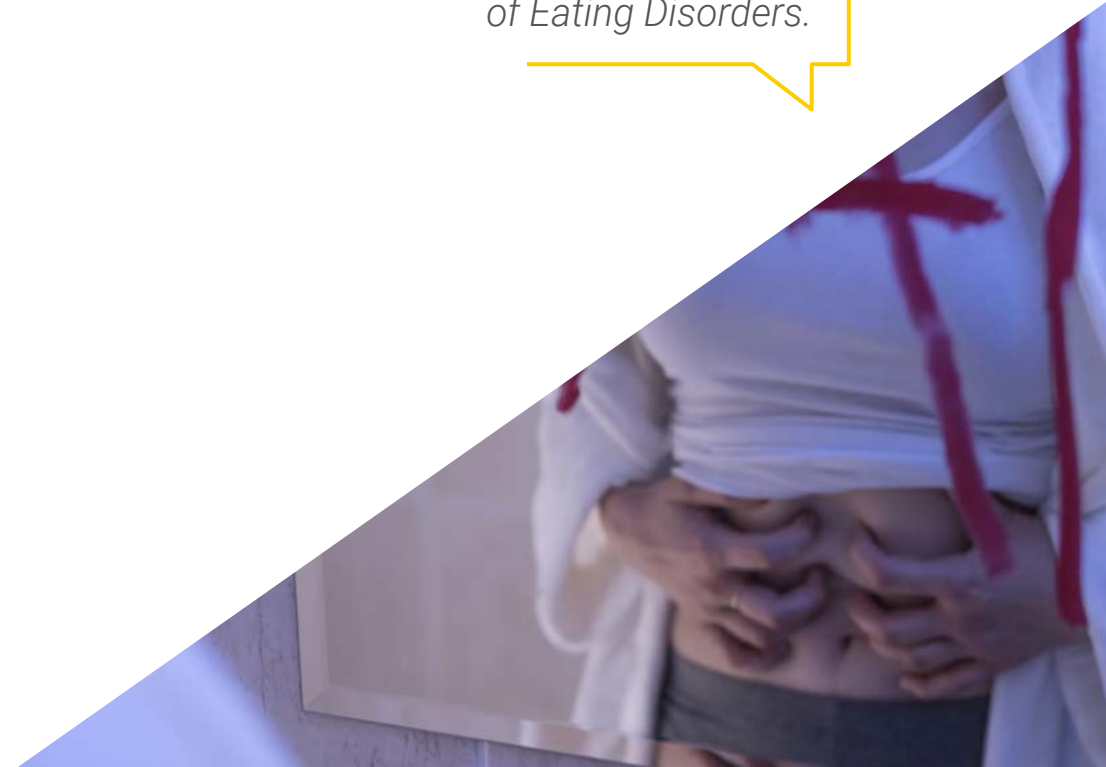
Forming part of the teaching staff is a group of professionals in the world of Psychology who bring to this training their work experience, as well as a group of renowned specialists, recognised by esteemed scientific communities.

Thanks to its multimedia content developed with the latest educational technology, they will allow the professional a situated and contextual learning, that is to say, a simulated environment that will provide an immersive learning programmed to prepare in real situations.

This program is designed around Problem-Based Learning, where students must try to solve the different professional practice situations that arise during this academic course. For this reason, you will be assisted by an innovative, interactive video system created by renowned and experienced experts in the field of psychology with extensive teaching experience.

The program includes real clinical cases and exercises to bring the development of the Postgraduate Certificate closer to the psychologist's clinical practice.

Make the most of this opportunity to learn about the latest advances in Clinical Features and Manifestations of Eating Disorders.



02

Objectives

The structure of the contents has been designed by a team of professionals knowledgeable about the implications of training in the daily practice of psychologists, aware of the current relevance of specialization to be able to act before the patient with mental pathology or psychological needs with quality teaching through new educational technologies.





“

This Postgraduate Certificate in Clinical Features and Manifestations of Eating Disorders contains the most complete and up-to-date scientific program on the market”



General Objectives

- ♦ Describe the fundamentals of psychodiagnosis of Eating Disorders
- ♦ Conduct reports as a health professional or within the Eating Disorders setting
- ♦ Describe the different sub-specialties in the field of eating disorders
- ♦ Identify the family profiles of eating disorders
- ♦ Describe the workings of the mind within the context of eating disorders
- ♦ Develop intervention procedures in eating disorders
- ♦ Use multidisciplinary protocols to guide the psychosocial intervention of eating disorders
- ♦ Research into studies on eating disorders
- ♦ Apply instruments to discriminate between simulation and lying, as well as to know how to contain the emotional state of the patient performing
- ♦ Explain from the code of ethics the procedures used to help with Eating Disorders





Specific Objectives

- ♦ Identify the main characteristics of a patient with an eating disorder a priori
- ♦ Develop a guide to identify the main anomalies that occur in a diagnosed patient
- ♦ Design an action plan for the patient with the disorder in the event of a relapse

“

A unique, key, and decisive educational experience to boost your professional development”



03

Course Management

This program includes highly regarded health professionals in the field of psychology in its teaching staff, who bring their work experience to this program. In addition, renowned specialists, members of prestigious national and international scientific communities, are involved in designing and preparing the program.



“

Learn from leading professionals the latest advances in Clinical Features and Manifestations of Eating Disorders"

Management



Ms. Gascón Martín, Laura

- ♦ Director of the Assessment and Psychotherapy Center of Talavera de la Reina
- ♦ Forensic and Legal Psychology Specialist
- ♦ Psychologist of Courts 1 and 2 of Toledo
- ♦ Coordinator in Toledo of the emergency intervention and psychological assistance plan
- ♦ Coordinator of the national gender violence plan of the Society for Time-Limited Psychotherapies
- ♦ Master in Time-Limited Psychotherapy and Health Psychology
- ♦ Adult Psychotherapy Expert



Dr. Aguado Romo, Roberto

- ♦ President of the European Institute for Time-Limited Psychotherapy Psychologist in private practice
- ♦ Researcher in Time Limited Psychotherapy
- ♦ Guidance team coordinator for many schools
- ♦ Author of several books on Psychology
- ♦ Communicator and expert in Psychology in the media.
- ♦ University courses and postgraduate studies teacher.
- ♦ President of the European Institute of Time-Limited Psychotherapies
- ♦ Master's Degree in Clinical and Health Psychology
- ♦ Specialist in Clinical Psychology
- ♦ Selective Dissociation Targeting Specialist

Professors

Dr. De Dios González, Antonio

- ♦ Director of Avatar Psychologists
- ♦ Director of the Psychology Department of the Hospital Quirón in Marbella
- ♦ Master's Degree in Time-Limited Psychotherapy and Health Psychology by the European Institute of Time-Limited Psychotherapies
- ♦ Transpersonal Therapist by the Spanish School of Transpersonal Development
- ♦ EFT Specialist by the World Center for EFT
- ♦ Master's Degree in Neuro-Linguistic Programming (NLP) by Richard Bandler's Society of Neuro-Linguistic Programming
- ♦ Specialist in Clinical Hypnosis and Relaxation

Dr. Fernández, Ángel

- ♦ European specialist psychologist in Psychotherapy from the EFPA
- ♦ Health Psychologist
- ♦ Master's Degree in Clinical and Health Psychology
- ♦ Director of the Evaluation and Psychotherapy Center of Madrid
- ♦ Tutor in charge of the Psychodiagnosis and Psychological Intervention area of the CEP
- ♦ Author of the TEN technique
- ♦ Head of studies on the Master's Degree in Time-Limited Psychotherapy and Health Psychology
- ♦ Specialist in Clinical Hypnosis and Relaxation

Dr. Martínez Lorca, Manuela

- ♦ Doctorate in Psychology, University of Castilla-La Mancha
- ♦ Health Psychologist
- ♦ Lecturer in the Department of Psychology at the UCLM
- ♦ Master's Degree in Time-Limited Psychotherapy and Health Psychology by the European Institute of Time-Limited Psychotherapies. Specialist in Clinical Hypnosis and Relaxation

Dr. Otero, Verónica

- ♦ European specialist psychologist in Psychotherapy at the CEP health center in Bilbao
- ♦ Head of the children and youth area of intervention with PTL in the CEP of Bilbao
- ♦ Master in Time-Limited Psychotherapy and Health Psychology
- ♦ Child and Adolescent Specialist

Dr. Zabala Baños, María Carmen

- ♦ PhD in Psychology, University of Castilla La Mancha
- ♦ Health Psychologist. Master's Degree in Clinical and Health Psychology
- ♦ Master in Time-Limited Psychotherapy and Health Psychology
- ♦ Psychosocial and Work Rehabilitation Specialist
- ♦ Specialist in Clinical Hypnosis and Relaxation

04

Structure and Content

The structure of the contents has been designed by a team of professionals who recognise the course implications in the daily praxis of psychologists, aware of the relevance in current skills needed to treat patients with psychological disorders and are committed to quality teaching using new educational technologies.



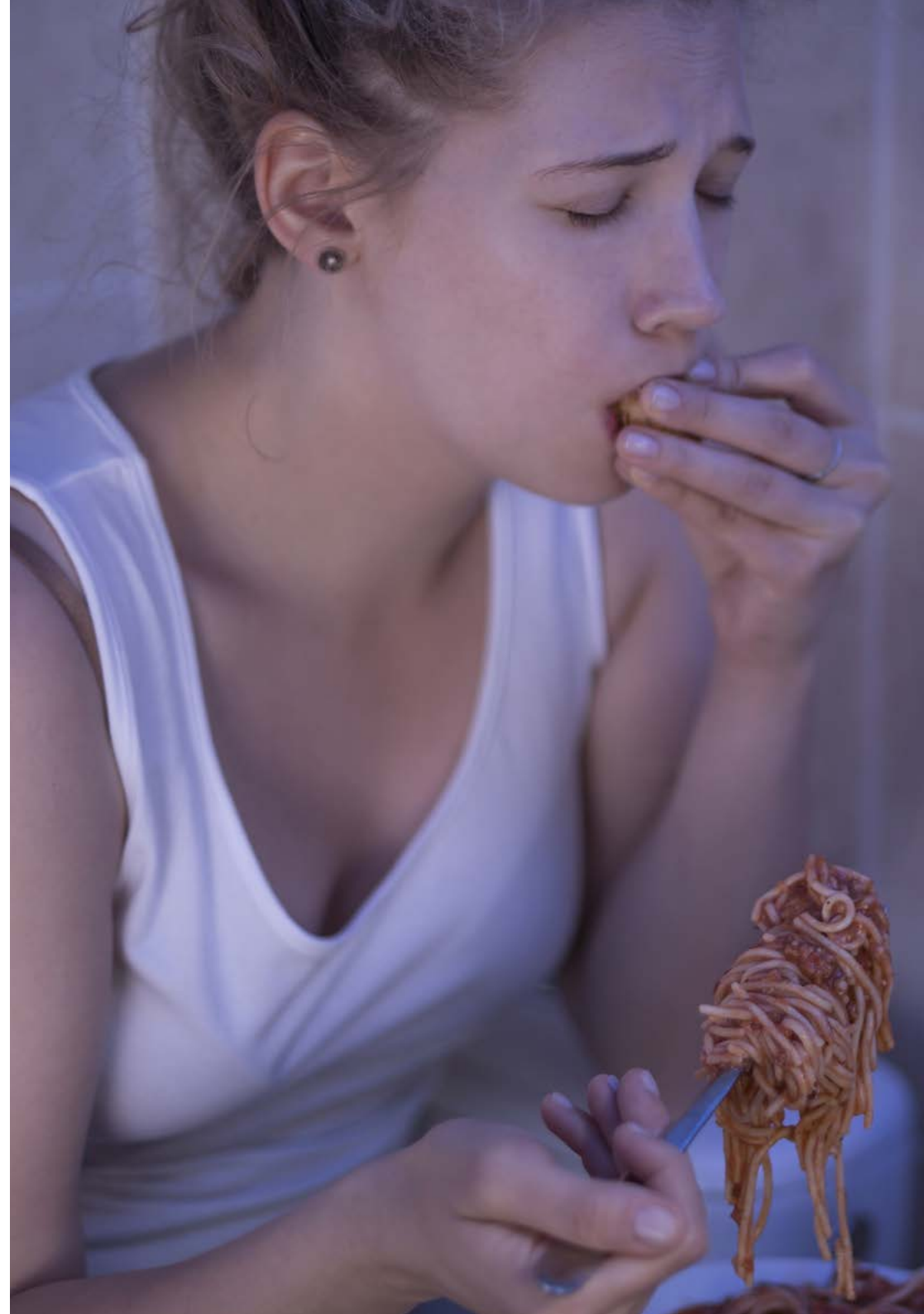


“

This Postgraduate Certificate in Clinical Features and Manifestations of Eating Disorders contains the most complete and up-to-date program on the market”

Module 1. Clinical Features and Manifestations of Eating Disorders

- 1.1. Body Weight Rejection
- 1.2. Fear of Gaining Weight
- 1.3. Weight Perception Disorder
- 1.4. Psychophysiological Patterns in Anorexia
 - 1.4.1. Concept
 - 1.4.2. Purpose
 - 1.4.3. Structure
- 1.5. Restraint and Purges
 - 1.5.1. Laxatives
 - 1.5.2. Diuretics
 - 1.5.3. Purges
 - 1.5.4. Special Cooking Treatment
 - 1.5.5. Increased Physical Activity
- 1.6. Dynamism
 - 1.6.1. Increased Study Hours
 - 1.6.2. Reduced Sleeping Hours
 - 1.6.3. Irritability
 - 1.6.4. Depression
- 1.7. Cognitive Symptoms
 - 1.7.1. Obsessive Worrying
 - 1.7.2. Fear of Gaining Weight
 - 1.7.3. Denial of Feelings of Hunger
 - 1.7.4. Sexual Disinterest
 - 1.7.5. Disinterest in Recreational Activities



- 1.8. Physiological Symptoms
 - 1.8.1. Anaemia
 - 1.8.2. Leukopenia
 - 1.8.3. High Levels of Urea
 - 1.8.4. Metabolic Alkalosis
 - 1.8.5. Metabolic Acidosis
 - 1.8.6. Hyperadrenocorticism
 - 1.8.7. High Levels of Estrogens
 - 1.8.8. Sinus Bradycardia
 - 1.8.9. Constipation
 - 1.8.10. Hypotension
 - 1.8.11. Dry Skin
- 1.9. Behavioral Symptoms of Bulimia
 - 1.9.1. Binge Eating
 - 1.9.2. Dietary Restriction
 - 1.9.3. Food Storage
 - 1.9.4. Binge Drinking
 - 1.9.5. Polytoxicomania
 - 1.9.6. Vomiting
 - 1.9.7. Refusal to Swallow
- 1.10. Cognitive Symptoms of Bulimia
 - 1.10.1. Fear of Gaining Weight
 - 1.10.2. Poor Reasoning
 - 1.10.3. Fear of Losing Control
 - 1.10.4. Depressive Thoughts
 - 1.10.5. Low self-esteem
 - 1.10.6. Persistent Feeling of Emptiness
 - 1.10.7. Difficulty in Understanding Personal Interaction Cues
- 1.11. Physiological Symptoms
- 1.12. Urinary System
- 1.13. Genital System

05

Methodology

This academic program offers students a different way of learning. Our methodology uses a cyclical learning approach: **Relearning**.

This teaching system is used, for example, in the most prestigious medical schools in the world, and major publications such as the **New England Journal of Medicine** have considered it to be one of the most effective.



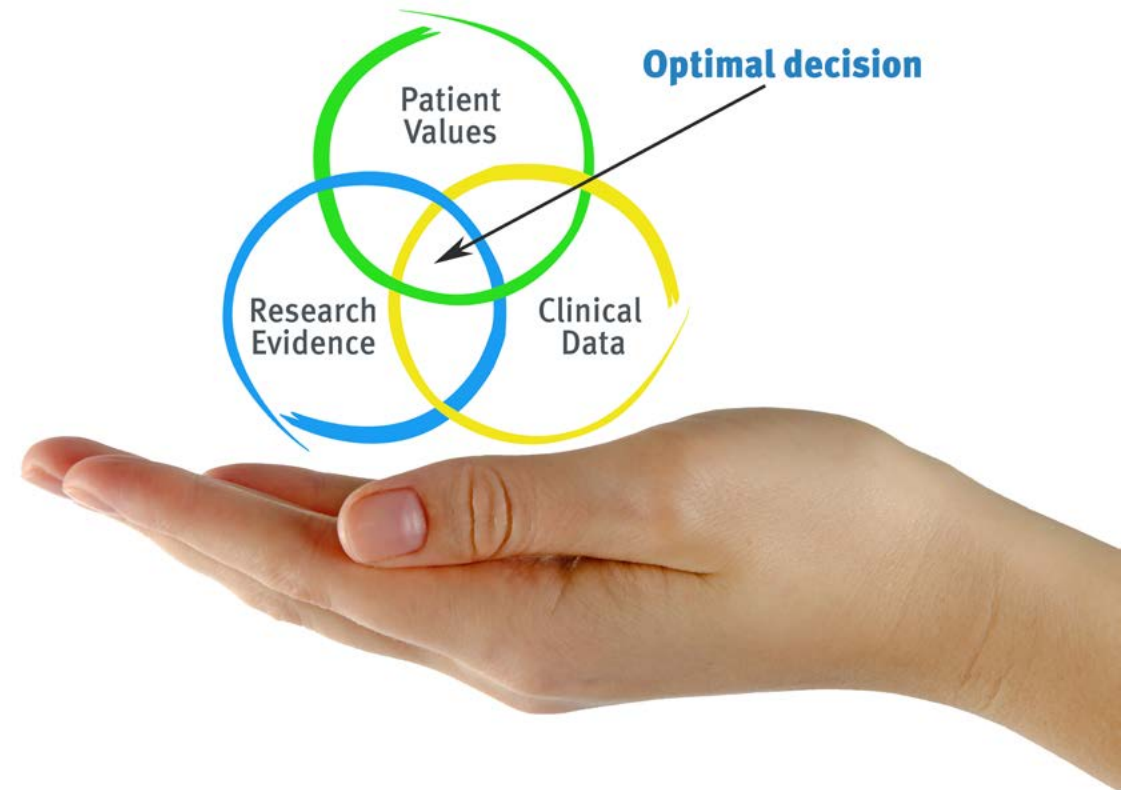
“

Discover Relearning, a system that abandons conventional linear learning, to take you through cyclical teaching systems: a way of learning that has proven to be extremely effective, especially in subjects that require memorization"

At TECH we use the Case Method

What should a professional do in a given situation? Throughout the program, students will face multiple simulated clinical cases, based on real patients, in which they will have to do research, establish hypotheses, and ultimately resolve the situation. There is an abundance of scientific evidence on the effectiveness of the method. Specialists learn better, faster, and more sustainably over time.

With TECH the psychologist experiences a way of learning that is shaking the foundations of traditional universities around the world.



According to Dr. Gérvas, the clinical case is the annotated presentation of a patient, or group of patients, which becomes a "case", an example or model that illustrates some peculiar clinical component, either because of its teaching power or because of its uniqueness or rarity. It is essential that the case is based on current professional life, trying to recreate the real conditions in the psychologist's professional practice.

“

Did you know that this method was developed in 1912, at Harvard, for law students? The case method consisted of presenting students with real-life, complex situations for them to make decisions and justify their decisions on how to solve them. In 1924, Harvard adopted it as a standard teaching method”

The effectiveness of the method is justified by four fundamental achievements:

1. Psychologists who follow this method not only master the assimilation of concepts, but also develop their mental capacity by means of exercises to evaluate real situations and apply their knowledge.
2. Learning is solidly translated into practical skills that allow the psychologist to better integrate knowledge into clinical practice.
3. Ideas and concepts are understood more efficiently, given that the example situations are based on real-life.
4. Students like to feel that the effort they put into their studies is worthwhile. This then translates into a greater interest in learning and more time dedicated to working on the course.



Relearning Methodology

At TECH we enhance the case method with the best 100% online teaching methodology available: Relearning.

Our university is the first in the world to combine the study of clinical cases with a 100% online learning system based on repetition, combining a minimum of 8 different elements in each lesson, which is a real revolution compared to the simple study and analysis of cases.

The psychologist will learn through real cases and by solving complex situations in simulated learning environments. These simulations are developed using state-of-the-art software to facilitate immersive learning.



At the forefront of world teaching, the Relearning method has managed to improve the overall satisfaction levels of professionals who complete their studies, with respect to the quality indicators of the best online university (Columbia University).

This methodology has trained more than 150,000 psychologists with unprecedented success in all clinical specialties. Our pedagogical methodology is developed in a highly competitive environment, with a university student body with a strong socioeconomic profile and an average age of 43.5 years old.

Relearning will allow you to learn with less effort and better performance, involving you more in your training, developing a critical mindset, defending arguments, and contrasting opinions: a direct equation for success.

In our program, learning is not a linear process, but rather a spiral (learn, unlearn, forget, and re-learn). Therefore, we combine each of these elements concentrically.

The overall score obtained by our learning system is 8.01, according to the highest international standards.



This program offers the best educational material, prepared with professionals in mind:



Study Material

All teaching material is produced by the specialists who teach the course, specifically for the course, so that the teaching content is highly specific and precise.

These contents are then applied to the audiovisual format, to create the TECH online working method. All this, with the latest techniques that offer high quality pieces in each and every one of the materials that are made available to the student.



Latest Techniques and Procedures on Video

TECH introduces students to the latest techniques, to the latest educational advances, to the forefront of current psychology. All of this in direct contact with students and explained in detail so as to aid their assimilation and understanding. And best of all, you can watch the videos as many times as you like.



Interactive Summaries

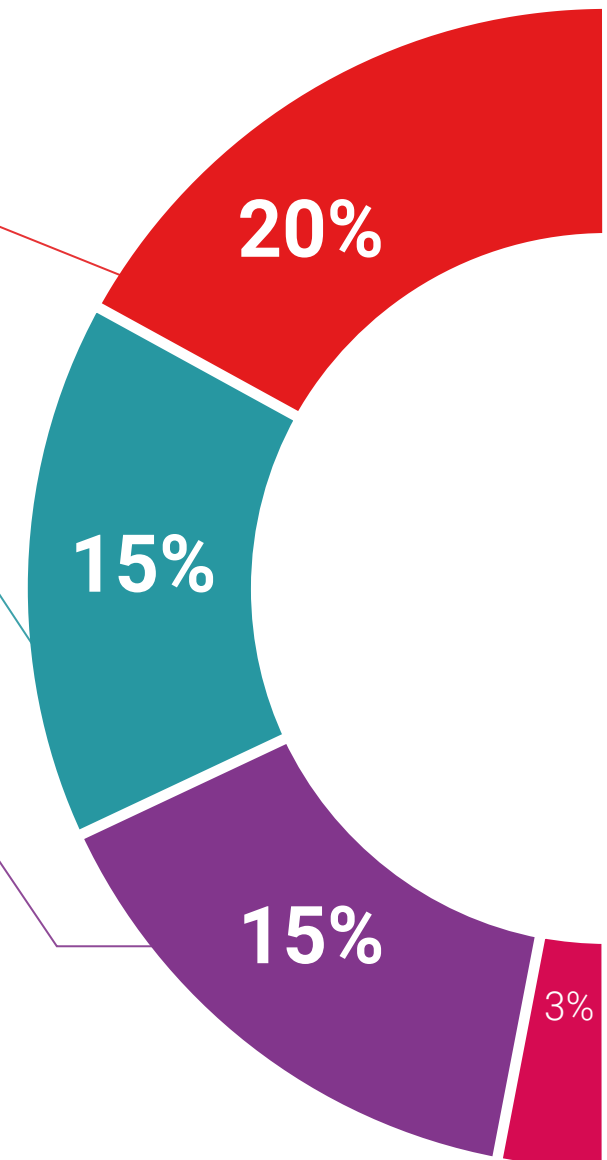
The TECH team presents the contents attractively and dynamically in multimedia lessons that include audio, videos, images, diagrams, and concept maps in order to reinforce knowledge.

This exclusive educational system for presenting multimedia content was awarded by Microsoft as a "European Success Story".



Additional Reading

Recent articles, consensus documents and international guidelines, among others. In TECH's virtual library, students will have access to everything they need to complete their course.





Expert-Led Case Studies and Case Analysis

Effective learning ought to be contextual. Therefore, TECH presents real cases in which the expert will guide students, focusing on and solving the different situations: a clear and direct way to achieve the highest degree of understanding.



Testing & Retesting

We periodically evaluate and re-evaluate students' knowledge throughout the program, through assessment and self-assessment activities and exercises, so that they can see how they are achieving their goals.



Classes

There is scientific evidence suggesting that observing third-party experts can be useful.

Learning from an Expert strengthens knowledge and memory, and generates confidence in future difficult decisions.



Quick Action Guides

TECH offers the most relevant contents of the course in the form of worksheets or quick action guides. A synthetic, practical, and effective way to help students progress in their learning.



06

Certificate

The Postgraduate Certificate in Clinical Features and Manifestations of Eating Disorders guarantees students, in addition to the most rigorous and up-to-date education, access to a Postgraduate Certificate issued by TECH Technological University.



The image features two graduation caps against a blue sky with light clouds. One cap is in the foreground, tilted upwards, and the other is slightly behind it. The background is split into a white diagonal section and a magenta section.

“

Successfully complete this program and receive your university qualification without having to travel or fill out laborious paperwork”

This **Postgraduate Certificate in Clinical Features and Manifestations of Eating Disorders** contains the most complete and up-to-date program on the market.

After the student has passed the assessments, they will receive their corresponding **Postgraduate Certificate** issued by **TECH Technological University** via tracked delivery*.

The diploma issued by **TECH Technological University** will reflect the qualification obtained in the Postgraduate Certificate, and meets the requirements commonly demanded by labor exchanges, competitive examinations, and professional career evaluation committees.

Title: **Postgraduate Certificate in Clinical Features and Manifestations of Eating Disorders**

Official N° of Hours: **200 h.**



*Apostille Convention. In the event that the student wishes to have their paper diploma issued with an apostille, TECH EDUCATION will make the necessary arrangements to obtain it, at an additional cost.

future
health confidence people
education information tutors
guarantee accreditation teaching
institutions technology learning
community commitment
personalized service innovation
knowledge present
online training
development language
virtual classroom



Postgraduate Certificate Clinical Features and Manifestations of Eating Disorders

- » Modality: **online**
- » Duration: **6 weeks**
- » Certificate: **TECH Technological University**
- » Dedication: **16h/week**
- » Schedule: **at your own pace**
- » Exams: **online**

Postgraduate Certificate

Clinical Features and Manifestations of Eating Disorders

