

Postgraduate Certificate

Attachment and Social Relationships in School Bullying



Postgraduate Certificate

Attachment and Social Relationships in School Bullying

- » Modality: online
- » Duration: 6 weeks
- » Certificate: TECH Global University
- » Credits: 6 ECTS
- » Schedule: at your own pace
- » Exams: online

Website: www.techtitute.com/us/psychology/postgraduate-certificate/attachment-social-relationships-school-bullying

Index

01

Introduction

p. 4

02

Objectives

p. 8

03

Course Management

p. 12

04

Structure and Content

p. 16

05

Methodology

p. 20

06

Certificate

p. 28

01

Introduction

The emotional bonds that children develop with their parents and close relatives in their first years of life contribute directly to the way they relate to other young people at school. These ties, in turn, can lead to difficulties in forming friendships and greater vulnerability to bullying. Therefore, the psychologists must have a deep knowledge of attachment and social relationships to improve the quality of life of these children and prevent possible cases of bullying. Consequently, TECH has designed this program which, in a 100% online mode, will allow the students to delve into the theories of attachment and updated techniques to generate personal identity in childhood and adolescence.





“

Be able to know the updated techniques to prevent antisocial behavior in children through this Postgraduate Certificate"

The attachment of children to their close relatives greatly conditions the way these children behave in the school environment. Excessive emotional dependence can significantly affect young people's social interactions with others, making it difficult for them to make friends and making them more likely to be victims of bullying. Therefore, psychologists specialized in the care of younger patients must have a broad understanding of this emotional field in order to address bullying cases from a holistic perspective.

Consequently, TECH has focused its efforts in carrying out this program, which provides the student with the most relevant and updated knowledge on Attachment and Social Relationships in School Bullying. Through it, you will investigate the aspects that make up the affection or its evolution throughout the different periods of childhood and adolescence. You will also delve into the development of personal identity and cutting-edge interventions to prevent antisocial behavior in minors.

All this, in a 100% online format, which allows the psychologists to optimize their learning without the need to stick to uncomfortable study schedules. In the same way, you will enjoy the best didactic resources of the academic market, among which stand out supports such as case studies, interactive summaries and explanatory videos that will perfect this educational experience.

This **Postgraduate Certificate in Attachment and Social Relationships in School Bullying** contains the most complete and up-to-date program on the market. The most important features include:

- ♦ The development of case studies presented by experts in Psychology, Personality Psychology and Psychopathology
- ♦ Graphic, schematic, and practical contents with which they are created, provide scientific and practical information on the disciplines that are essential for professional practice
- ♦ Practical exercises where self-assessment can be used to improve learning
- ♦ Its special emphasis on innovative methodologies
- ♦ Theoretical lessons, questions to the expert, debate forums on controversial topics, and individual reflection assignments
- ♦ Content that is accessible from any fixed or portable device with an Internet connection



Through this program, you will identify cutting-edge methods to promote the development of personal identity in children"

“

Update yourself in this field of Psychology in only 6 weeks and through the most avant-garde didactic materials of the educational panorama”

The program’s teaching staff includes professionals from sector who contribute their work experience to this educational program, as well as renowned specialists from leading societies and prestigious universities.

Its multimedia content, developed with the latest educational technology, will provide the professionals with situated and contextual learning, i.e., a simulated environment that will provide an immersive education programmed to learn in real situations.

The design of this program focuses on Problem-Based Learning, by means of which the professionals must try to solve the different professional practice situations that are presented throughout the academic course. For this purpose, the students will be assisted by an innovative interactive video system created by renowned experts.

TECH offers you a 100% online methodology that allows you to study at your own pace without fixed schedules.

Learn, with this program, the current theories of the development of social relationships during adolescence.



02

Objectives

The objective of this Postgraduate Certificate is to update psychologists in the prevention and effective approach to bullying through a comprehensive understanding of the progress of attachment and social connections. Students will have access to didactic tools that will allow them to broaden their vision about this type of attachment and relationships throughout the life cycle. In addition, you will achieve this learning in just 6 weeks of intensive study.



“

*Achieve your professional goals with
this 100% online program from TECH”*



General Objectives

- ♦ Delve into the prevention and intervention in school bullying
- ♦ Delve into the different areas in which school bullying has an impact
- ♦ Offer a system of in-depth study for a comprehensive approach to school bullying
- ♦ Inquire into the educational, psychological, social and legal aspects of school bullying
- ♦ Acquire in-depth knowledge of the relationship between school bullying and its psychological consequences
- ♦ Describe school conflict management, assertive communication and problem solving tools
- ♦ Explain the tools to know how to prevent school bullying
- ♦ Explain the tools to know how to intervene in school bullying
- ♦ Enable to work collaboratively with all the actors involved in school bullying





Specific Objectives

- Delve into what attachment is and to take into account what produces it
- Take into account the skills necessary to develop attachment
- Delve into the types of attachment
- Describe all the aspects involved in attachment
- Explain what social relationships are
- Discover how social relationships are produced
- Understand the impact of social relationships

“

Update yourself in this field of Psychology in only 6 weeks of intensive study”

03

Course Management





“

Learn from leading professionals the latest advances in intervention with Attachment and Social Relationships in School Bullying”

Management



Dr. González Rivas, Maria José

- ♦ Specialist in Pre-school Education, Politics and Educational Psychology
- ♦ PhD in Education from the University of Salamanca
- ♦ Master's Degree in Coaching and Emotional Intelligence certified by Bureau Veritas and AICM
- ♦ Master's Degree in University Teaching by CEU Cardenal Herrera University
- ♦ Degree in Philosophy and Educational Sciences and Pedagogy from the University of Salamanca
- ♦ Diploma in Teaching from the University of Santiago de Compostela



04

Structure and Content

The Postgraduate Certificate in Attachment and Social Relationships in School Bullying is structured in different topics to address in a thorough and complete way the development of this type of attachment and its close relationship with *bullying*. In this way, the different attachment theories and their evolution during childhood and adult life, as well as the construction of personal identity, are studied in depth. All this, gathered in a complete multimedia material, available in a 100% online format and at the students' disposal whenever they wish.

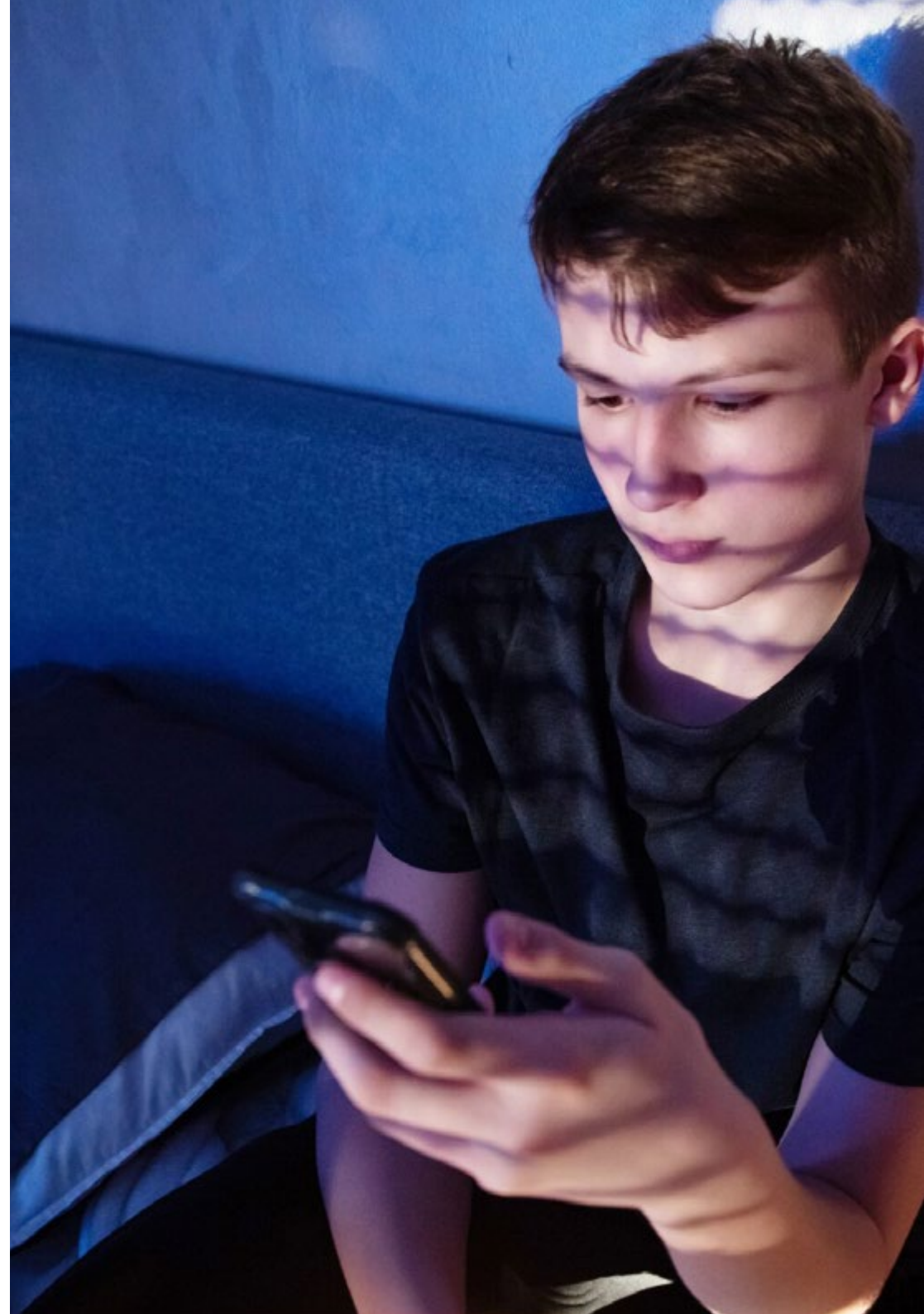


“

Enjoy the most complete syllabus of the pedagogical panorama in Attachment and Social Relationships in School Bullying"

Module 1. Importance of attachment development and social relationships in school bullying

- 1.1. Introduction to the Study of Affective and Social Development
 - 1.1.1. Bowlby's attachment theory
 - 1.1.2. Later contributions to attachment theory
 - 1.1.3. Types of Attachment
- 1.2. Beginning of Affective Relationships
 - 1.2.1. Conditions Necessary for an Attachment to Form
 - 1.2.2. The Formation of the First Attachment
 - 1.2.3. Components of the Attachment Relationship
 - 1.2.4. Evolution of Attachment During Childhood
- 1.3. Development and Evolution of Attachment in Infancy
 - 1.3.1. Theories on Affective Development
 - 1.3.2. Affective Development
 - 1.3.3. Emotional development
- 1.4. Development of Attachment from Adolescence to Adulthood
 - 1.4.1. Attachment in Adolescence
 - 1.4.2. Attachment in Young Adults
 - 1.4.3. Attachment in middle-aged and elderly adults
 - 1.4.4. Differences in Attachment in Adulthood
- 1.5. Development of Personal Identity
 - 1.5.1. The Development of the Self-Concept
 - 1.5.2. Self-Esteem: the Evaluation Component of Self-Esteem
 - 1.5.3. The Development of Self-Control
 - 1.5.4. Concept of Identity
 - 1.5.5. Social Cognition
- 1.6. Peer-to-Peer Relationships
 - 1.6.1. Relationships between colleagues
 - 1.6.2. Sibling relationships
 - 1.6.3. Relationships between friends
 - 1.6.4. Social interactions in play, aggression, and prosocial behavior
 - 1.6.5. Peer power relationships
 - 1.6.6. Factors of social experience



- 1.7. Social Development in Adolescence
 - 1.7.1. Theories of development of social relationships
 - 1.7.2. Self-Concept and Self-Esteem
 - 1.7.3. Family Relationships
 - 1.7.4. Relationships with Peers
- 1.8. Moral in Childhood
 - 1.8.1. Development of Moral Concept
 - 1.8.2. Moral Thinking
 - 1.8.3. Moral Behavior
 - 1.8.4. Values
- 1.9. Early Promotion of Emotional Development
 - 1.9.1. Factors that Determine Parental Performance
 - 1.9.2. Intervention Models
 - 1.9.3. Parental Educational Styles
- 1.10. Intervention in Social Development
 - 1.10.1. Family Education and Social Competence
 - 1.10.2. Assessment of social competence in children
 - 1.10.3. Development of social competence in children
 - 1.10.4. Prevention of Antisocial Behavior



Enroll in this Postgraduate Certificate and learn in a completely effective and entertaining way, through videos, interactive summaries or self-assessment exercises"

05

Methodology

This academic program offers students a different way of learning. Our methodology uses a cyclical learning approach: **Relearning**.

This teaching system is used, for example, in the most prestigious medical schools in the world, and major publications such as the **New England Journal of Medicine** have considered it to be one of the most effective.



“

Discover Relearning, a system that abandons conventional linear learning, to take you through cyclical teaching systems: a way of learning that has proven to be extremely effective, especially in subjects that require memorization"

At TECH we use the Case Method

What should a professional do in a given situation? Throughout the program, students will face multiple simulated clinical cases, based on real patients, in which they will have to do research, establish hypotheses, and ultimately resolve the situation. There is an abundance of scientific evidence on the effectiveness of the method. Specialists learn better, faster, and more sustainably over time.

With TECH the psychologist experiences a way of learning that is shaking the foundations of traditional universities around the world.



According to Dr. Gérvas, the clinical case is the annotated presentation of a patient, or group of patients, which becomes a "case", an example or model that illustrates some peculiar clinical component, either because of its teaching power or because of its uniqueness or rarity. It is essential that the case is based on current professional life, trying to recreate the real conditions in the psychologist's professional practice.

“

Did you know that this method was developed in 1912, at Harvard, for law students? The case method consisted of presenting students with real-life, complex situations for them to make decisions and justify their decisions on how to solve them. In 1924, Harvard adopted it as a standard teaching method”

The effectiveness of the method is justified by four fundamental achievements:

1. Psychologists who follow this method not only master the assimilation of concepts, but also develop their mental capacity by means of exercises to evaluate real situations and apply their knowledge.
2. Learning is solidly translated into practical skills that allow the psychologist to better integrate knowledge into clinical practice.
3. Ideas and concepts are understood more efficiently, given that the example situations are based on real-life.
4. Students like to feel that the effort they put into their studies is worthwhile. This then translates into a greater interest in learning and more time dedicated to working on the course.



Relearning Methodology

At TECH we enhance the case method with the best 100% online teaching methodology available: Relearning.

Our university is the first in the world to combine the study of clinical cases with a 100% online learning system based on repetition, combining a minimum of 8 different elements in each lesson, which is a real revolution compared to the simple study and analysis of cases.

The psychologist will learn through real cases and by solving complex situations in simulated learning environments. These simulations are developed using state-of-the-art software to facilitate immersive learning.



At the forefront of world teaching, the Relearning method has managed to improve the overall satisfaction levels of professionals who complete their studies, with respect to the quality indicators of the best online university (Columbia University).

This methodology has trained more than 150,000 psychologists with unprecedented success in all clinical specialties. Our pedagogical methodology is developed in a highly competitive environment, with a university student body with a strong socioeconomic profile and an average age of 43.5 years old.

Relearning will allow you to learn with less effort and better performance, involving you more in your training, developing a critical mindset, defending arguments, and contrasting opinions: a direct equation for success.

In our program, learning is not a linear process, but rather a spiral (learn, unlearn, forget, and re-learn). Therefore, we combine each of these elements concentrically.

The overall score obtained by our learning system is 8.01, according to the highest international standards.



This program offers the best educational material, prepared with professionals in mind:



Study Material

All teaching material is produced by the specialists who teach the course, specifically for the course, so that the teaching content is highly specific and precise.

These contents are then applied to the audiovisual format, to create the TECH online working method. All this, with the latest techniques that offer high quality pieces in each and every one of the materials that are made available to the student.



Latest Techniques and Procedures on Video

TECH introduces students to the latest techniques, to the latest educational advances, to the forefront of current psychology. All of this in direct contact with students and explained in detail so as to aid their assimilation and understanding. And best of all, you can watch the videos as many times as you like.



Interactive Summaries

The TECH team presents the contents attractively and dynamically in multimedia lessons that include audio, videos, images, diagrams, and concept maps in order to reinforce knowledge.

This exclusive educational system for presenting multimedia content was awarded by Microsoft as a "European Success Story".



Additional Reading

Recent articles, consensus documents and international guidelines, among others. In TECH's virtual library, students will have access to everything they need to complete their course.





Expert-Led Case Studies and Case Analysis

Effective learning ought to be contextual. Therefore, TECH presents real cases in which the expert will guide students, focusing on and solving the different situations: a clear and direct way to achieve the highest degree of understanding.



Testing & Retesting

We periodically evaluate and re-evaluate students' knowledge throughout the program, through assessment and self-assessment activities and exercises, so that they can see how they are achieving their goals.



Classes

There is scientific evidence suggesting that observing third-party experts can be useful.

Learning from an Expert strengthens knowledge and memory, and generates confidence in future difficult decisions.



Quick Action Guides

TECH offers the most relevant contents of the course in the form of worksheets or quick action guides. A synthetic, practical, and effective way to help students progress in their learning.



06

Certificate

The Postgraduate Certificate in Attachment and Social Relationships in School Bullying guarantees students, in addition to the most rigorous and up-to-date education, access to a Postgraduate Certificate issued by TECH Global University.



“

Successfully complete this program and receive your university qualification without having to travel or fill out laborious paperwork”

This program will allow you to obtain your **Postgraduate Certificate in Attachment and Social Relationships in School Bullying** endorsed by **TECH Global University**, the world's largest online university.

TECH Global University is an official European University publicly recognized by the Government of Andorra ([official bulletin](#)). Andorra is part of the European Higher Education Area (EHEA) since 2003. The EHEA is an initiative promoted by the European Union that aims to organize the international training framework and harmonize the higher education systems of the member countries of this space. The project promotes common values, the implementation of collaborative tools and strengthening its quality assurance mechanisms to enhance collaboration and mobility among students, researchers and academics.

This **TECH Global University** title is a European program of continuing education and professional updating that guarantees the acquisition of competencies in its area of knowledge, providing a high curricular value to the student who completes the program.

Title: **Postgraduate Certificate in Attachment and Social Relationships in School Bullying**

Modality: **online**

Duration: **6 weeks**

Accreditation: **6 ECTS**



*Apostille Convention. In the event that the student wishes to have their paper diploma issued with an apostille, TECH Global University will make the necessary arrangements to obtain it, at an additional cost.

future
health confidence people
education information tutors
guarantee accreditation teaching
institutions technology learning
community commitment
personalized service innovation
knowledge present
development language
virtual classroom



Postgraduate Certificate

Attachment and Social
Relationships in
School Bullying

- » Modality: online
- » Duration: 6 weeks
- » Certificate: TECH Global University
- » Credits: 6 ECTS
- » Schedule: at your own pace
- » Exams: online

Postgraduate Certificate

Attachment and Social Relationships in School Bullying

