

Postgraduate Certificate

Assessment in General Health Psychology



MEDICAL PATIENT INFORMATION

Date of birth _____ Zip _____
City/State _____ Secondary _____



Postgraduate Certificate Evaluation in General Health Psychology

- » Modality: online
- » Duration: 6 weeks
- » Certificate: TECH Global University
- » Credits: 6 ECTS
- » Schedule: at your own pace
- » Exams: online

Website: www.techtute.com/us/psychology/postgraduate-certificate/evaluation-general-health-psychology

Index

01

Introduction

p. 4

02

Objectives

p. 8

03

Course Management

p. 12

04

Structure and Content

p. 16

05

Methodology

p. 20

06

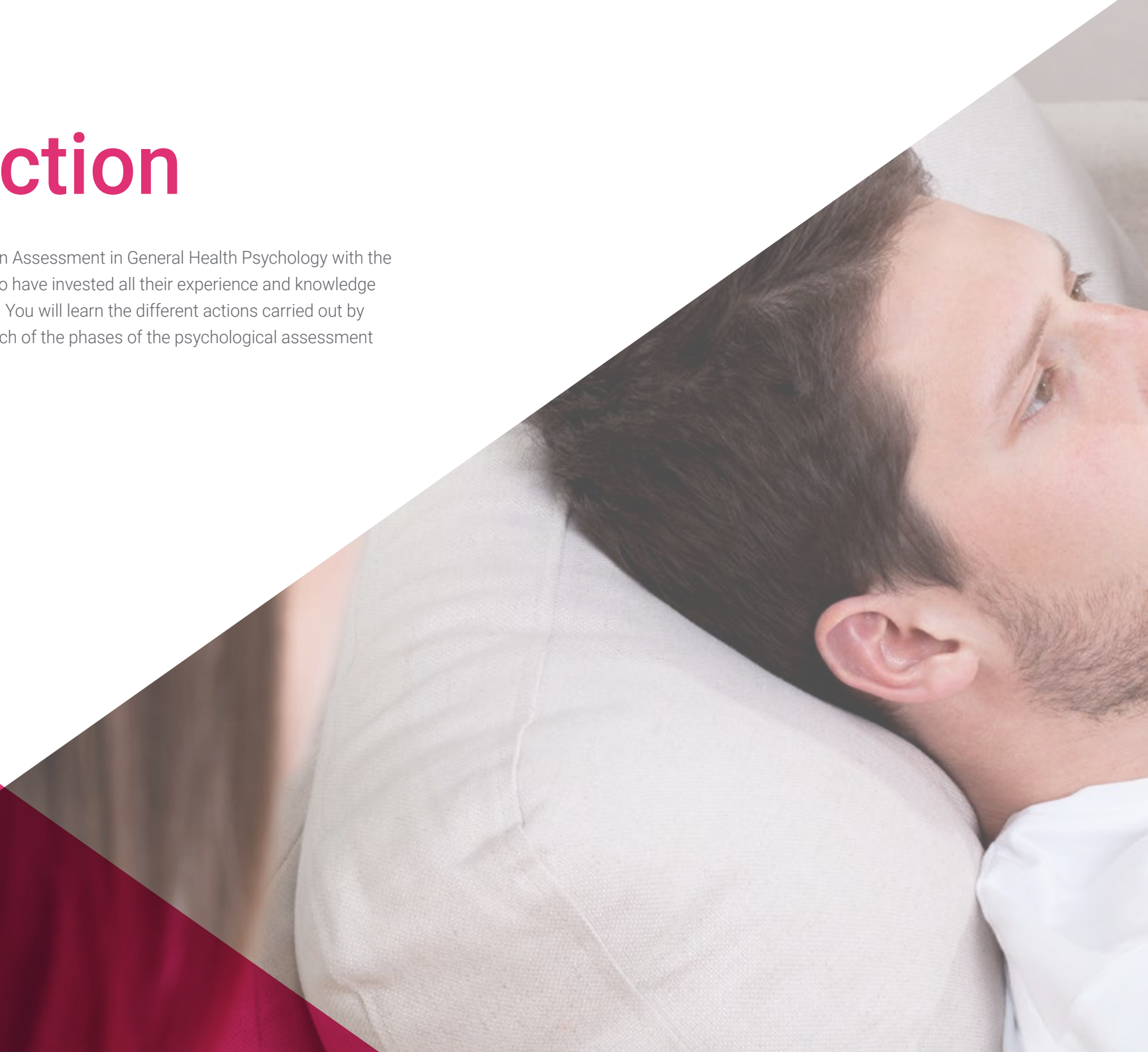
Certificate

p. 28

01

Introduction

Develop your skills and knowledge in Assessment in General Health Psychology with the best professionals in the sector, who have invested all their experience and knowledge in the development of this program. You will learn the different actions carried out by a General Health Psychologist in each of the phases of the psychological assessment process.



“

A deep and comprehensive dive into strategies and approaches in Assessment in General Health Psychology”

Psychologists play a fundamental role in healthcare when it comes to improving people's physical, mental and social well-being. Today, they are an essential component in resolving different psychological disorders.

This Course provides extensive knowledge in advanced models and techniques in assessment, diagnosis and psychological intervention in this field of health. For this, you will have a teaching faculty that stands out for its extensive professional experience in the different fields in which psychology has developed and in different sectors of the population.

Throughout this educational program, the student will cover all the current approaches in the work carried out by health psychologists. The correct approach to psychological assessments and interviews; the implementation of psychological techniques for stress prevention or the assimilation of the different phases of the research process in Psychology. These will be some of the many topics of work and study that students will be able to integrate into their education with this comprehensive program.

We will not only take you through the theoretical knowledge we offer, but we will introduce you to another way of studying and learning, one which is simpler, more organic and more efficient. We will work to keep you motivated and to develop your passion for learning, helping you to think and develop critical thinking skills.

A high-level step that will become a process of improvement, not only on a professional level, but also on a personal level.

This **Postgraduate Certificate in Assessment in General Health Psychology** contains the most complete and up-to-date academic program on the market. The most important features of the program include:

- ♦ Developing 100 practical cases presented by experts in General Health Psychology
- ♦ The graphic, schematic, and practical contents with which they are created provide scientific and practical information on the disciplines that are essential for carrying out research
- ♦ News and innovations on research in the different fields of psychology
- ♦ Practical exercises where self-assessment can be used to improve learning.
- ♦ Algorithm-based interactive learning system for decision-making in the situations that are presented to the student.
- ♦ Special emphasis on research methodologies
- ♦ Theoretical lessons, questions to the expert, debate forums on controversial topics, and individual reflection assignments
- ♦ Content that is accessible from any fixed or portable device with an Internet connection



An educational program created for professionals who aspire to excellence that will allow you to acquire new skills and strategies in a smooth and effective way".



Access deep insights in Assessment in General Health Psychology and its multiple implications, in a comprehensive Postgraduate Certificate designed to propel you to another professional level"

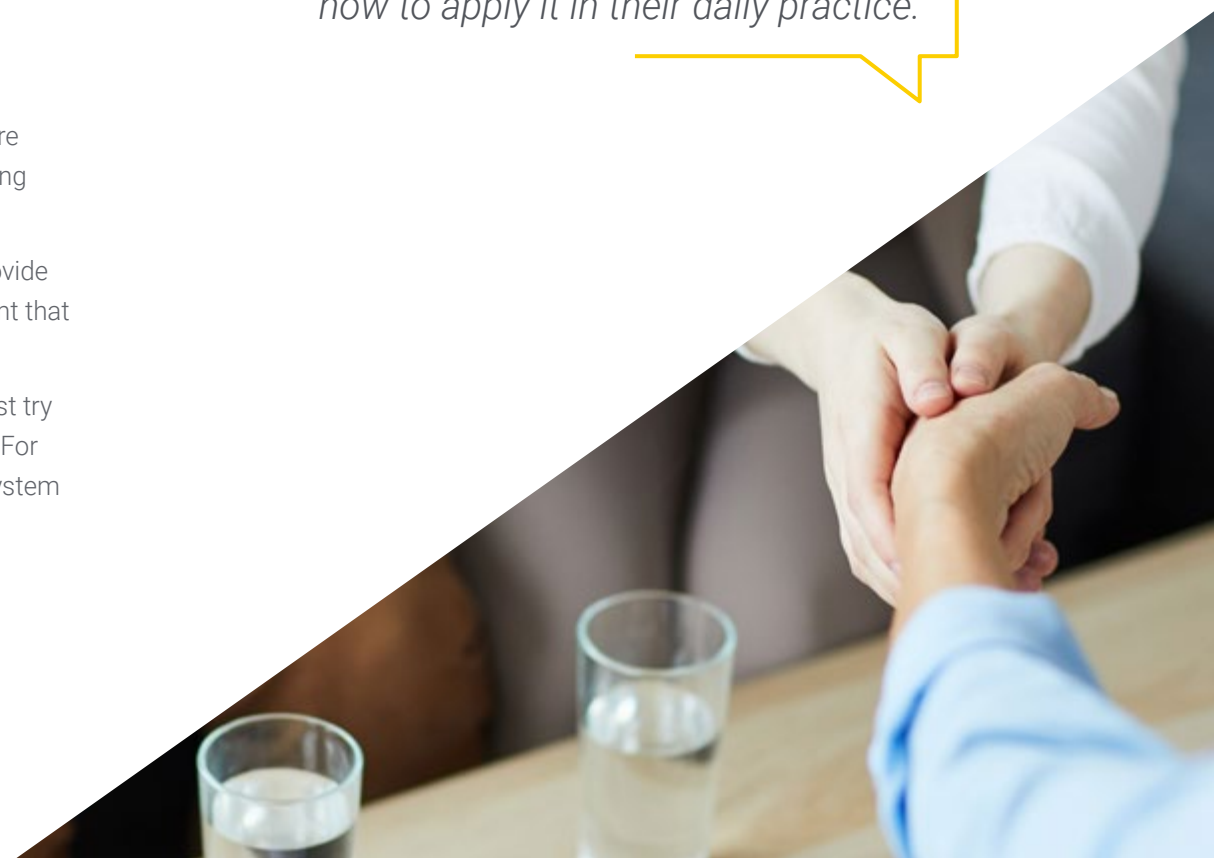
It includes a very broad teaching staff made up of experts in psychology, who share their work experience in this program, as well as recognized specialists from leading communities and prestigious universities.

The multimedia content, developed with the latest educational technology, will provide the professional with situated and contextual learning, i.e., a simulated environment that will provide an immersive program designed to learn in real situations.

This program is designed around Problem-Based Learning, where the student must try to solve the different professional practice situations that arise during the course. For this purpose, the professional will be assisted by an innovative interactive video system created by renowned and experienced research experts.

Increase your confidence as a healthcare psychiatrist by updating your knowledge through this course.

This Postgraduate Certificate marks the difference between a professional with a lot of knowledge, and a professional who knows how to apply it in their daily practice.



02

Objectives

This program is aimed at healthcare psychologists, so that they can acquire the necessary tools to develop in the field, learning about the latest trends and delving into the issues that are at the forefront of this branch of knowledge. Researchers will only be able to carry out their objectives successfully if they are adequately prepared.



“

If your goal is to improve in your profession and acquire a qualification that will enable you to compete with the best, then look no further. This program will give your career the boost it needs”



General Objective

- ◆ Prepare professionals qualified to perform the Assessment in General Health Psychology with the ability to carry out effective assessments and treatments in people's behavior and activity in order to promote and improve their general state of health.



This Postgraduate Certificate is aimed at all psychologists who want to achieve a high degree of specialization in the healthcare sector”





Specific Objectives

- ◆ Identify the phases of the psychological evaluation process and the different actions carried out by a General Health Psychologist in each of them
- ◆ Know the types of assessment techniques that exist in health psychology
- ◆ Describe the characteristics of psychological interviews, their stages and the peculiarities of the different types of interviews, especially the initial interview and the return interview
- ◆ Mention the main changes and controversies in the latest edition of the DSM
- ◆ Detail the assessment techniques necessary for problem identification and psychopathological diagnoses
- ◆ Understand the usefulness of a clinical formulation within the psychological assessment process, as well as the different formulation models that exist
- ◆ Know the most commonly used instruments for evaluating quality of life, lifestyles and stress
- ◆ Understand the characteristics of the most common chronic conditions and the most commonly used assessment tools for these problems
- ◆ Know the criteria for diagnosing the main mental and behavioral disorders
- ◆ Study the most commonly used assessment instruments for the main mental and behavioral disorders

03

Course Management

As General Health Psychology is a broad field of action, TECH has relied on a teaching staff with extensive academic and clinical experience in this field. In this way, all the theoretical content has an eminent practical focus on relevant issues such as assessment techniques in health psychology or assessment in chronic conditions. All this provided by a team of the

of the highest level, which seeks a deep and quality update for the psychologist.



“

You will be able to solve all your doubts directly with the teachers, so you will have a personalized academic experience according to your concerns and professional interests in the field

of General Health Psychology”

Management



Dr. Sánchez Padrón, Nuria Ester

- ♦ Psychologist with experience in educational attention to children at risk, teaching and training.
- ♦ Degree in Psychology from the University of La Laguna
- ♦ Master's Degree in General Health Psychology from the University of La Rioja
- ♦ Training in Emergency Psychological Care
- ♦ Training in Psychological Care in Penitentiary Institutions



04

Structure and Content

The structure of the contents has been designed by a team of professionals in Assessment in General Health Psychology who are aware of the importance of keeping up to date to be able to delve deeper into this field of knowledge and produce publications of academic quality.





“

This Postgraduate Certificate in Assessment in General Health Psychology contains the most complete and up-to-date scientific program in the market”

Module 1. Assessment in General Health Psychology

- 1.1. Psychological Assessment Process
 - 1.1.1. Descriptive-Predictive Process
 - 1.1.2. Intervention-Assessment Process
- 1.2. Assessment Techniques in Health Psychology
 - 1.2.1. Features of the Assessment Techniques
 - 1.2.2. Types of Assessment Techniques
- 1.3. The Interview as an Assessment Technique
 - 1.3.1. Conceptualization of the Psychological Interview
 - 1.3.2. Interview Process
- 1.4. Observation
 - 1.4.1. Observation Features
 - 1.4.2. Observation Process
- 1.5. Diagnosis in Health Psychology
 - 1.5.1. Features and Limitations of the DSM-5
 - 1.5.2. Assessment for Problem Identification
- 1.6. Clinical Formulation
 - 1.6.1. Clinical Case Formulation
 - 1.6.2. Functional Analysis (Conceptual and Empirical Foundations)
 - 1.6.3. Functional Analysis (Strategies)
- 1.7. Communication of Results in Health Psychology
 - 1.7.1. Return Interview
 - 1.7.2. Written Report
- 1.8. Quality of Life, Lifestyle and Stress Assessment
 - 1.8.1. Assessment of Quality of Life and the Intervention Process
 - 1.8.2. Lifestyle and Self-Efficacy for Health Assessment
 - 1.8.3. Stress Evaluation
- 1.9. Assessment in Chronic Conditions.
 - 1.9.1. Psychological Assessment in HIV
 - 1.9.2. Psychological Assessment in Chronic Pain
 - 1.9.3. Psychological Assessment in Oncology Patients
- 1.10. Assessment in Schizophrenia Spectrum Disorders
 - 1.10.1. Theoretical and Conceptual Aspects in the Assessment of Schizophrenia Spectrum Disorders
 - 1.10.2. Assessment Tools for Schizophrenia Spectrum Disorders
- 1.11. Assessment in Depressive and Bipolar Disorders
 - 1.11.1. Theoretical and Conceptual Aspects in the Assessment of Depressive and Bipolar Disorders
 - 1.11.2. Assessment Tools in Depressive and Bipolar Disorders
- 1.12. Assessment in Anxiety Disorders
 - 1.12.1. Theoretical and Conceptual Aspects in the Assessment of Anxiety Disorders
 - 1.12.2. Anxiety Disorders Assessment Tools
- 1.13. Assessment in Trauma-Related, Dissociative, Somatic Symptom and OCD Disorders
 - 1.13.1. Trauma-Related Disorders and Dissociative Disorders
 - 1.13.2. Somatic Symptom Disorders
 - 1.13.3. Obsessive-Compulsive Disorder and Related Disorders
- 1.14. Assessment of Eating, Sleep and Excretory System Disorders
 - 1.14.1. Eating Disorders
 - 1.14.2. Sleep Disorders
 - 1.14.3. Excretory System Disorders
- 1.15. Assessment in Sexual and Paraphilic Disorders
 - 1.15.1. Sexual Dysfunctions
 - 1.15.2. Paraphilic Disorders
- 1.16. Assessment in Addictive Disorders
 - 1.16.1. Diagnostic Criteria for Addictive Disorders
 - 1.16.2. Addictive Disorders Assessment Tools
 - 1.16.3. Personality Disorders



“

Our syllabus has been designed with teaching effectiveness in mind: so that you learn faster, more efficiently, and on a more permanent basis"

05

Methodology

This academic program offers students a different way of learning. Our methodology uses a cyclical learning approach: **Relearning**.

This teaching system is used, for example, in the most prestigious medical schools in the world, and major publications such as the **New England Journal of Medicine** have considered it to be one of the most effective.



“

Discover Relearning, a system that abandons conventional linear learning, to take you through cyclical teaching systems: a way of learning that has proven to be extremely effective, especially in subjects that require memorization"

At TECH, we use the Case Method

What should a professional do in a given situation? Throughout the program, students will face multiple simulated clinical cases, based on real patients, in which they will have to do research, establish hypotheses, and ultimately resolve the situation. There is an abundance of scientific evidence on the effectiveness of the method. Specialists learn better, faster, and more sustainably over time.

With TECH the psychologist experiences a way of learning that is shaking the foundations of traditional universities around the world.



According to Dr. Gérvas, the clinical case is the annotated presentation of a patient, or group of patients, which becomes a "case", an example or model that illustrates some peculiar clinical component, either because of its teaching power or because of its uniqueness or rarity. It is essential that the case is based on current professional life, trying to recreate the real conditions in the psychologist's professional practice.

“

Did you know that this method was developed in 1912, at Harvard, for law students? The case method consisted of presenting students with real-life, complex situations for them to make decisions and justify their decisions on how to solve them. In 1924, Harvard adopted it as a standard teaching method.

The effectiveness of the method is justified by four fundamental achievements:

1. Psychologists who follow this method not only master the assimilation of concepts, but also develop their mental capacity by means of exercises to evaluate real situations and apply their knowledge.
2. Learning is solidly translated into practical skills that allow the psychologist to better integrate knowledge into clinical practice.
3. Ideas and concepts are understood more efficiently, given that the example situations are based on real-life.
4. Students like to feel that the effort they put into their studies is worthwhile. This then translates into a greater interest in learning and more time dedicated to working on the course.



Relearning Methodology

At TECH we enhance the Harvard case method with the best 100% online teaching methodology available: Relearning.

Our university is the first in the world to balance the study of clinical cases with a 100% online learning system based on repetition, combining a minimum of 8 different elements in each lesson, which is a real revolution compared to the simple study and analysis of cases.



The psychologist will learn through real cases and by solving complex situations in simulated learning environments.

These simulations are developed using state-of-the-art software to facilitate immersive learning.

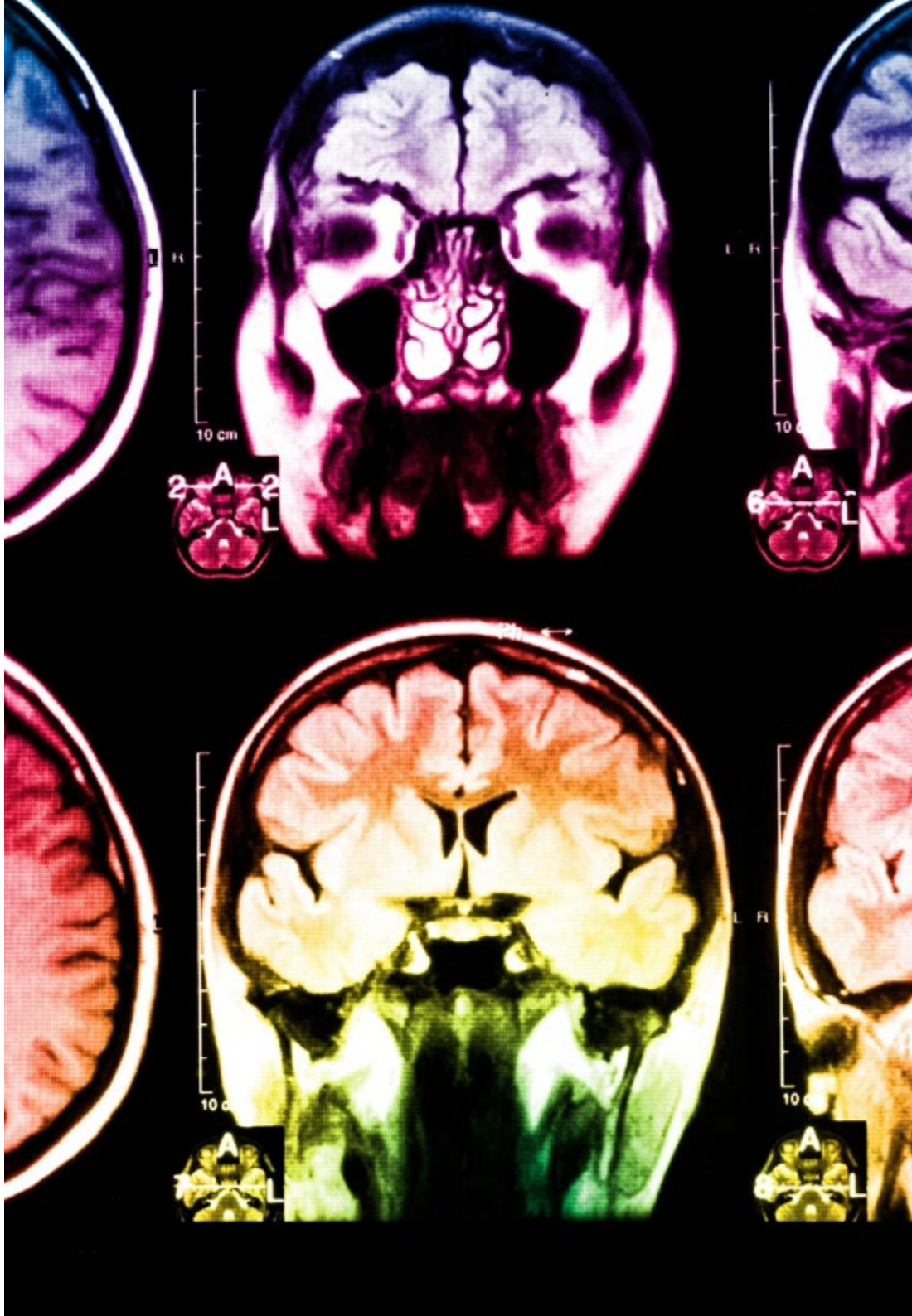
At the forefront of world teaching, the Relearning method has managed to improve the overall satisfaction levels of professionals who complete their studies, with respect to the quality indicators of the best online university (Columbia University).

This methodology has enabled more than 150,000 psychologists with unprecedented success in all clinical specialties. Our pedagogical methodology is developed in a highly competitive environment, with a university student body with a strong socioeconomic profile and an average age of 43.5 years old.

Relearning will allow you to learn with less effort and better performance, involving you more in your study, developing a critical mindset, defending arguments, and contrasting opinions: a direct equation for success.

In our program, learning is not a linear process, but rather a spiral (learn, unlearn, forget, and re-learn). Therefore, we balance each of these elements concentrically.

The overall score obtained by our learning system is 8.01, according to the highest international standards.



This program offers the best educational material, prepared with professionals in mind:



Study Material

All teaching material is produced by the specialists who teach the course, specifically for the course, so that the teaching content is highly specific and precise.

These contents are then adapted in audiovisual format, to create the TECH online working method. All this, with the latest techniques that offer high-quality pieces in each and every one of the materials that are made available to the student.



Latest Techniques and Procedures on Video

TECH introduces students to the latest techniques, to the latest educational advances, to the forefront of current psychology. All of this in direct contact with students and explained in detail so as to aid their assimilation and understanding. And best of all, you can watch the videos as many times as you like.



Interactive Summaries

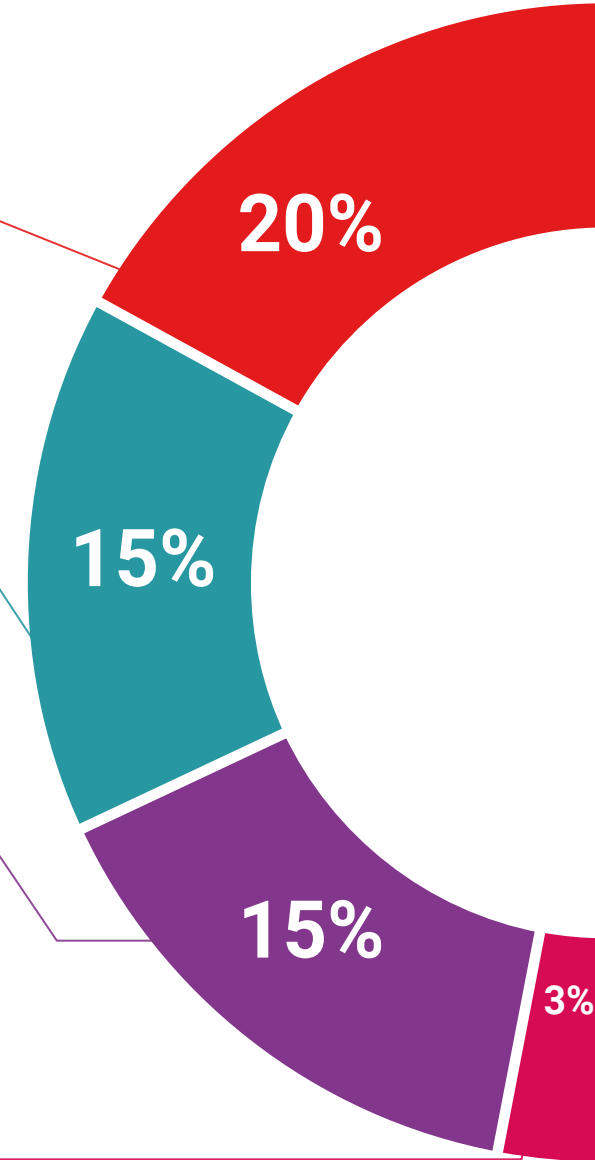
The TECH team presents the contents attractively and dynamically in multimedia lessons that include audio, videos, images, diagrams, and concept maps in order to reinforce knowledge.

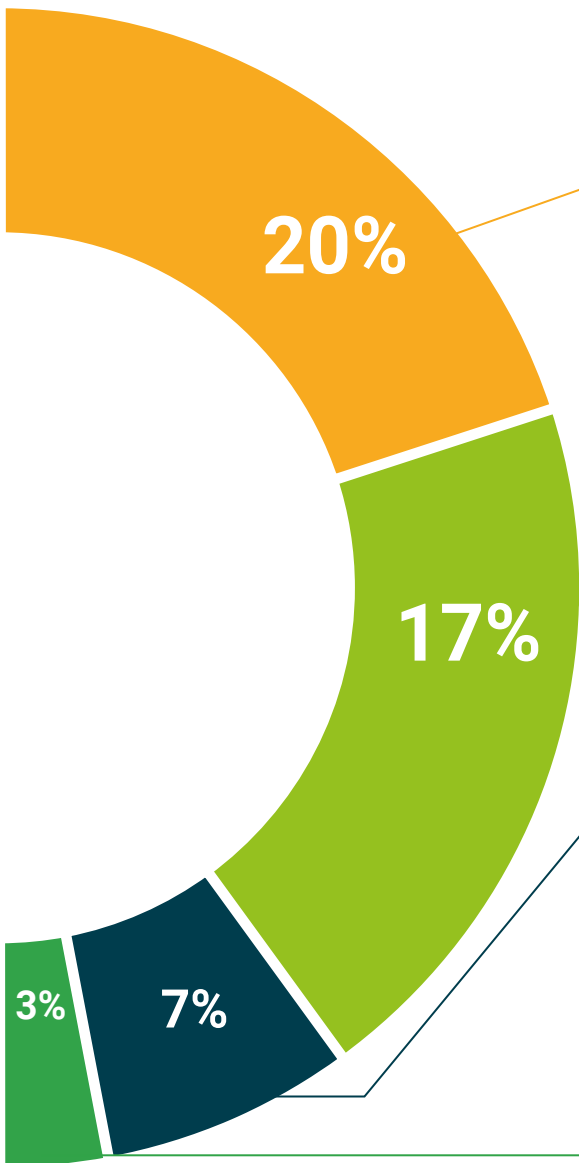
This exclusive educational system for presenting multimedia content was awarded by Microsoft as a "European Success Story".



Additional Reading

Recent articles, consensus documents and international guidelines, among others. In TECH's virtual library, students will have access to everything they need to complete their course.





Expert-Led Case Studies and Case Analysis

Effective learning ought to be contextual. Therefore, TECH presents real cases in which the expert will guide students, focusing on and solving the different situations: a clear and direct way to achieve the highest degree of understanding.



Testing & Retesting

We periodically assess and re-assess students' knowledge throughout the program, through assessment and self-assessment activities and exercises, so that they can see how they are achieving their goals.



Classes

There is scientific evidence suggesting that observing third-party experts can be useful.

Learning from an Expert strengthens knowledge and memory, and generates confidence in future difficult decisions.



Quick Action Guides

TECH offers the most relevant contents of the course in the form of worksheets or quick action guides. A synthetic, practical and effective way to help students progress in their learning.



06

Certificate

The Postgraduate Certificate in Assessment in General Health Psychology guarantees students, in addition to the most rigorous and up-to-date education, access to a Postgraduate Certificate issued by TECH Global University.



“

Include on your resume a Postgraduate Certificate in Assessment in General Health Psychology: A huge step forward in your competitiveness in the sector”

This program will allow you to obtain your **Postgraduate Certificate in Assessment in General Health Psychology** endorsed by **TECH Global University**, the world's largest online university.

TECH Global University is an official European University publicly recognized by the Government of Andorra ([official bulletin](#)). Andorra is part of the European Higher Education Area (EHEA) since 2003. The EHEA is an initiative promoted by the European Union that aims to organize the international training framework and harmonize the higher education systems of the member countries of this space. The project promotes common values, the implementation of collaborative tools and strengthening its quality assurance mechanisms to enhance collaboration and mobility among students, researchers and academics.

This **TECH Global University** title is a European program of continuing education and professional updating that guarantees the acquisition of competencies in its area of knowledge, providing a high curricular value to the student who completes the program.

Title: **Postgraduate Certificate in Assessment in General Health Psychology**

Modality: **online**

Duration: **6 weeks**

Accreditation: **6 ECTS**



*Apostille Convention. In the event that the student wishes to have their paper diploma issued, with an apostille, TECH Global University will make the necessary arrangements to obtain it, at an additional



Postgraduate Certificate Evaluation in General Health Psychology

- » Modality: online
- » Duration: 6 weeks
- » Certificate: TECH Global University
- » Credits: 6 ECTS
- » Schedule: at your own pace
- » Exams: online

Postgraduate Certificate

Assessment in General Health Psychology

