

Internship Program

Psychology Research



tech global
university

Internship Program
Psychology Research

Index

01

Introduction

p. 4

02

Why Study an
Internship Program?

p. 6

03

Objectives

p. 8

04

Educational Plan

p. 12

05

Where Can I Do the
Internship Program?

p. 14

06

General Conditions

p. 18

07

Certificate

p. 20

01

Introduction

The main objective of Psychology Research is to help understand and treat the mental and emotional disorders that people suffer from. Given the proliferation of these disorders in recent years, psychologists with high and up-to-date skills in this area are increasingly needed by health institutions, in order to contribute to improving the mental well-being of society. For this reason, TECH has created this 100% practical program, through which the student will master new research methodologies or use sophisticated techniques to extract and analyze data. All this, enjoying a 3-week experience in a first class hospital center and integrated into an excellent multidisciplinary team.

“

Master, through this program, the cutting-edge methodologies that allow the design of first level psychological research”





Psychology is a scientific discipline that focuses on the study of human behavior and the mind. In this line, research is fundamental to advance in the knowledge of how people think, feel and behave, as well as in the improvement of therapeutic methods used to address mental disorders with maximum effectiveness. As a result of their relevance to ensure Mental Health, psychologists with a high command of up-to-date techniques for designing and extracting research results are increasingly needed in the healthcare environment.

Faced with this situation, TECH has created this Internship Program, through which the professional will acquire the most up-to-date skills in the field of Psychology Research. Throughout 120 hours, they will be integrated into an excellent multidisciplinary work team, within a first level hospital environment. In this way, they will be able to effectively design a psychological research or to use the most effective techniques to analyze the data extracted. In addition, they will study in depth the mental disorders that occur during adolescence.

During the whole internship process, in addition to being part of a great clinical team, the student will be guided by a tutor specially designated for them. This expert will be responsible for ensuring the quality of their learning and for resolving all their doubts, with the aim of ensuring that their teaching fully meets their academic expectations.

02

Why Study an Internship Program?

In the vast majority of fields, practical experience is essential to achieve outstanding professional success. In the world of Psychology, it is not enough to have theoretical knowledge about advances in Psychology Research, but it is essential to know how to apply it in the daily work environment. In order to meet this need, TECH has created this program, which gives students the opportunity to be part of a cutting-edge clinical environment for 3 weeks. Together with expert professionals in this field, students will acquire skills that will boost their professional development in this area of Mental Health.



TECH offers you a great opportunity to develop your research skills through an excellent practical experience in a prestigious hospital center"

1. Updating from the latest technology available

In recent years, Psychology Research has undergone significant changes due to the emergence of new techniques that improve the processes of sample selection, information extraction and data analysis. With the aim of enabling students to incorporate these strategies into their daily practice in just 3 weeks, TECH has developed this program.

2. Gaining In-Depth Knowledge from the Experience of Top Specialists

Throughout the program, students will have the opportunity to work alongside a team of outstanding professionals in the field of Psychology, who will teach them the most up-to-date research skills. In addition, each student will receive personalized advice from a tutor who will help them improve their skills in this field.

3. Entering First-Class Professional Environment

TECH carries out a rigorous selection process of the centers where the Internship Program will take place, in order to ensure that students can be up-to-date in a first-class clinical environment. In this way, they will have the opportunity to collaborate with highly demanding teams of high professional quality.

4. Putting the acquired knowledge into daily practice from the very first moment

Nowadays, it is common to find educational programs that do not meet the daily needs of professionals, as they offer theoretical contents with little practical application. That is why TECH has developed a program with an innovative pedagogical approach, focused on internships, which will allow students to solidly improve their skills in a high-level clinical environment.

5. Expanding the Boundaries of Knowledge

TECH offers students the opportunity to take the Internship Program in renowned hospitals, with the objective of learning from professionals with extensive experience in psychological research. This is a unique opportunity that only this educational institution can provide to the students.



*You will have full practical immersion
at the center of your choice"*

03 Objectives

This Internship Program has been carried out with the aim of providing students with the most advanced skills in the field of Psychology Research. Through it, they will handle the state-of-the-art techniques of data analysis, selection of representative samples or master the efficient protocols to design studies in this discipline. In this way, they will be trained to perform with competence in this area.



General Objectives

- Raise the psychologist's methodological and performance level in the field of research
- Use the most avant-garde tools within the research context



*Incorporate the latest advances
in Psychology Research into your
daily practice in just 3 weeks”*





Specific Objectives

- ◆ Know the different techniques of data analysis in applied Psychology Research: univariate and multivariate analysis and the fundamentals of structural equation models
- ◆ Learn about the most relevant advances in the field of test design and analysis in Psychology
- ◆ Know the most relevant methodological advances for the analysis of significant change in studies on social, clinical or educational intervention programs
- ◆ Adequately analyze and interpret data from different research questions, with the help of specialized software
- ◆ Analyze and interpret data from both qualitative and quantitative studies with the help of specialized software
- ◆ Know the basics of the different sampling procedures and their applications in behavioral science research
- ◆ Know the fundamentals and basic indicators of the data provided by systematic reviews and meta-analyses
- ◆ Know the deontological and ethical foundations of research in Applied Psychology
- ◆ Be able to determine the sample size necessary to carry out a research project in a population
- ◆ Know how to plan a research project, identifying and operationalizing the hypothesis
- ◆ Know how to correctly select the appropriate measurement instruments, as well as the participating subjects
- ◆ Be able to search for information using the databases of our discipline and other related disciplines
- ◆ Know how to adequately select relevant research results in relation to the object of study

- ♦ Adequately manage the bibliography through specialized software
- ♦ Know the basics of scientific writing style based on the APA standards
- ♦ Know the importance of publishing the results obtained in scientific research
- ♦ Discriminate the type of journal to which a future publication should be addressed
- ♦ Know how to adequately apply scientific criteria in the analysis of published works
- ♦ Acquire specialized, up-to-date and scientific knowledge about emotional intelligence applied to the socio-educational field
- ♦ Critically discern the different theoretical models that support the term 'emotional intelligence', as well as the different factors that define it
- ♦ Be able to design and develop a research project on emotional intelligence under the principles of the scientific method
- ♦ Know the skills related to academic achievement and the tools to favor the development of a good emotional intelligence in the educational and family context
- ♦ Know and understand the psychological models used for the analysis of environmental problems
- ♦ Develop a critical conscience in relation to the potential articulation of the fields of research on environmental problems
- ♦ Learn about the reciprocal relationships between the individual and the socio-physical environment from the perspective of Environmental Psychology
- ♦ Have basic scientific, theoretical and methodological knowledge to implement psychosocial assessment and intervention programs to deal with problems arising from the relationship of the individual with his physical space and the environment
- ♦ Know the theoretical-conceptual tools and the basic methodological principles of research on psychological development in childhood
- ♦ Analyze the problems of research on beliefs and prejudice with children, as well as the most notable empirical results in countries
- ♦ Know the different multidisciplinary fields and current lines of research in relation to early intervention
- ♦ Differentiate between feasible research project designs in early intervention and to know the steps to carry them out
- ♦ Be able to carry out a research design to develop an empirical study on a specific aspect of child psychological development
- ♦ Know and understand the neuropsychological functioning of attentional processes and human memory
- ♦ Know and discriminate adequately between the different memory systems
- ♦ Be able to analyze and interpret a research report related to the neuropsychology of attention and memory
- ♦ Design an experimental task in neuropsychology for the neuropsychological assessment of attention and memory
- ♦ Design and implement a treatment or intervention program for the improvement of attention and memory
- ♦ Know the analysis necessary for the neuropsychological assessment of attention and memory
- ♦ Know the processes related to cognitive impairment and mood states in old age
- ♦ Acquire basic knowledge on the assessment, prevention and effective intervention in memory functioning in the elderly
- ♦ Learn about the heterogeneity and diversity of cognitive processes in aging
- ♦ Design and carry out a memory intervention program aimed exclusively at the elderly



- ♦ Critically analyze the importance of the current social perception of issues related to the elderly and old age
- ♦ Learn the use of basic assessment and intervention tools in different areas of adolescent health
- ♦ Know the main risk factors that affect adolescence and how they can influence the onset of eating disorders or drug use in this important stage of development
- ♦ Learn to adequately apply different intervention techniques aimed at reducing anxiety responses to different stressful situations
- ♦ Be able to design intervention programs in psychology aimed exclusively at the adolescent population
- ♦ Learn how to design and evaluate an intervention program for some of the most frequent adolescent disorders
- ♦ Recognize the different psychological problems of adolescence, as well as their manifestations at the physiological, cognitive and motor levels
- ♦ Know the different fields of intervention in health psychology in clinical and educational contexts
- ♦ Learn to use the basic tools of evaluation and intervention in Health Psychology in an adequate way
- ♦ Be able to design and evaluate the results of intervention programs in Health Psychology
- ♦ Know the existing advances on intervention techniques with proven effectiveness in Health Psychology
- ♦ Know the functioning and applications of intervention techniques based on biofeedback and transcranial magnetic stimulation

04

Educational Plan

This Internship Program will last for 3 consecutive weeks, with a daily workday of 8 hours from Monday to Friday, in which students will join a highly prestigious multidisciplinary team in a clinical center. During this period, they will have the opportunity to work in a real and fully demanding work environment, using cutting-edge techniques and tools in Psychology Research.

In this completely practical Internship Program, the activities are aimed at developing and perfecting the skills necessary to provide psychological care in areas and conditions that require highly qualified professionals, and are oriented towards specific expertise for practicing the activity, in a safe environment for the patient and with highly professional performance.

Thanks to this innovative educational methodology, students will be trained to successfully face the most current challenges that arise in their profession, acquiring state-of-the-art skills to ensure the success and thoroughness of the results obtained in their psychological research.

The student will actively participate by performing activities and procedures related to each area of competence (learning to learn and learning to do), with the support and guidance of the teachers and other classmates to facilitate teamwork and multidisciplinary integration as transversal competencies for the practice of Psychology (learning to be and learning to relate to others).





The procedures described below will be the basis of the practical part of the training, and their implementation will be subject to the center’s own availability and workload, the proposed activities being the following:

Module	Practical Activity
Advanced Techniques of Data Analysis in Psychology	Use the different data analysis techniques applicable in Psychology Research
	Adequately interpret data from different research questions, using specialized software
	Interpret data from both qualitative and quantitative studies
Psychology Research Methods	Carry out the determination of the sample size needed to conduct a research project
	Plan a research project, identifying and operationalizing the hypotheses
	Correctly select the appropriate measurement instruments to carry out a research project
Documentation Techniques and Preparation of Publications in Psychology	Use databases to extract relevant information for publications on Psychology
	Adequately select relevant research results in relation to the object of study
	Adequately manage the bibliography through specialized software
Advances in Research on Psychological Development in Childhood and Adolescence	Carry out a research design that allows the development of a study on different aspects of child psychological development
	Manage the basic assessment and intervention tools in different areas of adolescent Mental Health
	Design intervention programs in psychology aimed at the adolescent population

05

Where Can I Do the Internship Program?

This educational institution provides the possibility to carry out the Internship Program in a first-class hospital, located in different geographical locations, in order to guarantee the student's comfort. Throughout a period of 3 weeks, students will be able to develop their skills in Psychology Research in a high quality clinical environment.

“

Take this Internship Program in a first-class hospital, known for its state-of-the-art technology”





The student will be able to do this program at the following centers:



Psychology

Hospital HM Modelo

Country	City
Spain	La Coruña

Address: Rúa Virrey Osorio, 30, 15011, A Coruña

Network of private clinics, hospitals and specialized centers distributed throughout Spain.

Related internship programs:

- Anaesthesiology and Resuscitation
- Palliative Care



Psychology

Hospital HM Rosaleda

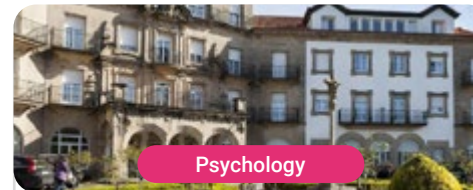
Country	City
Spain	La Coruña

Address: Rúa de Santiago León de Caracas, 1, 15701, Santiago de Compostela, A Coruña

Network of private clinics, hospitals and specialized centers distributed throughout Spain.

Related internship programs:

- Hair Transplantation
- Orthodontics and Dentofacial Orthopedics



Psychology

Hospital HM La Esperanza

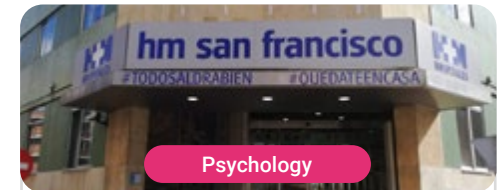
Country	City
Spain	La Coruña

Address: Av. das Burgas, 2, 15705, Santiago de Compostela, A Coruña

Network of private clinics, hospitals and specialized centers distributed throughout Spain.

Related internship programs:

- Oncology Nursing
- Clinical Ophthalmology



Psychology

Hospital HM San Francisco

Country	City
Spain	León

Address: C. Marqueses de San Isidro, 11, 24004, León

Network of private clinics, hospitals and specialized centers distributed throughout Spain.

Related internship programs:

- Update in Anesthesiology and Resuscitation
- Trauma Nursing



Psychology

Hospital HM Regla

Country	City
Spain	León

Address: Calle Cardenal Landázuri, 2, 24003, León

Network of private clinics, hospitals and specialized centers distributed throughout Spain.

Related internship programs:

- Update on Psychiatric Treatment in Minor Patients



Psychology

Hospital HM Montepríncipe

Country	City
Spain	Madrid

Address: Av. de Montepríncipe, 25, 28660, Boadilla del Monte, Madrid

Network of private clinics, hospitals and specialized centers distributed throughout Spain.

Related internship programs:

- Palliative Care
- Aesthetic Medicine



Psychology

Hospital HM Torrelodones

Country	City
Spain	Madrid

Address: Av. Castillo Olivares, s/n, 28250, Torrelodones, Madrid

Network of private clinics, hospitals and specialized centers distributed throughout Spain.

Related internship programs:

- Anaesthesiology and Resuscitation
- Palliative Care



Psychology

Hospital HM Sanchinarro

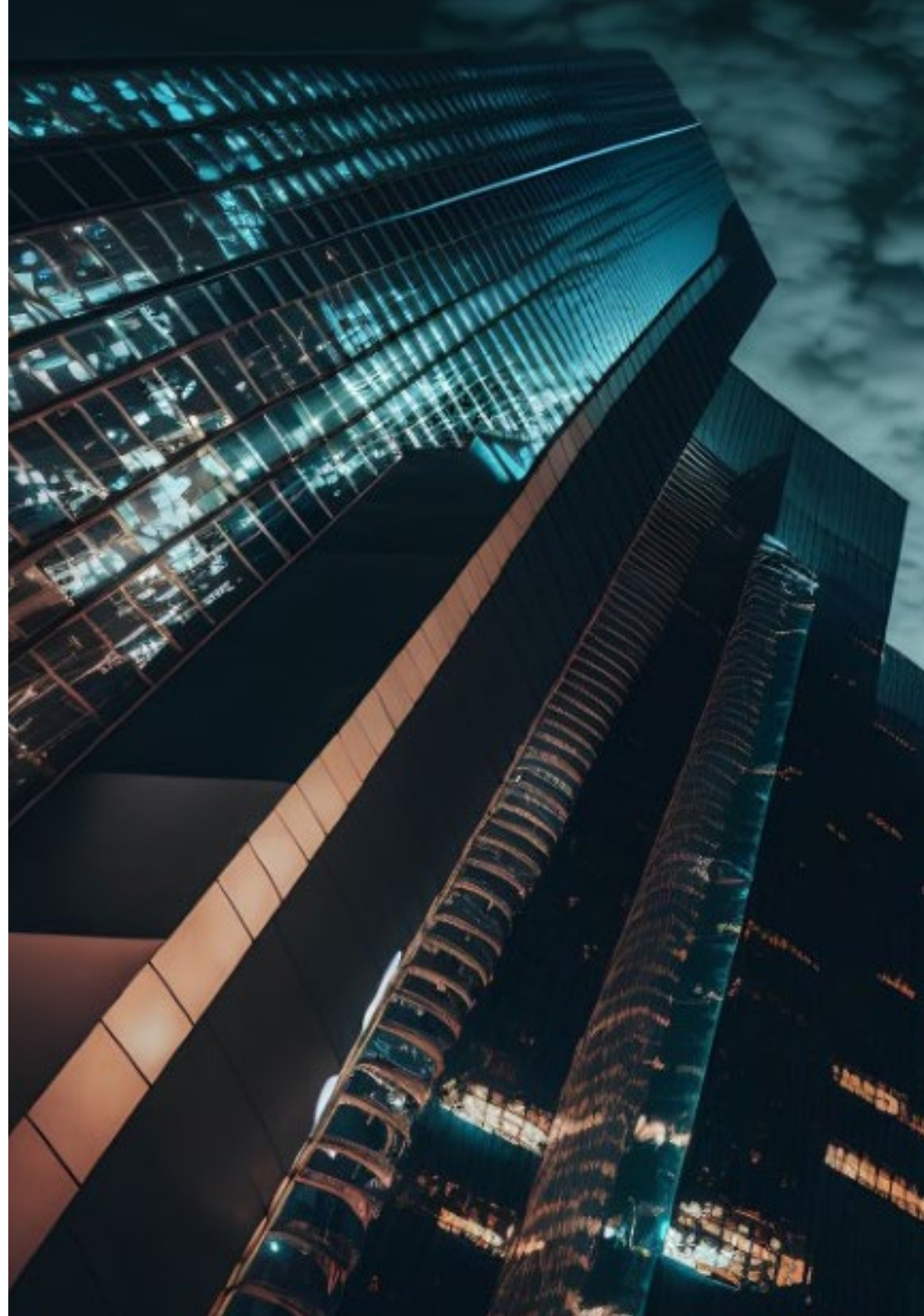
Country	City
Spain	Madrid

Address: Calle de Oña, 10, 28050, Madrid

Network of private clinics, hospitals and specialized centers distributed throughout Spain.

Related internship programs:

- Anaesthesiology and Resuscitation
- Palliative Care





Psychology

Policlínico HM Gabinete Velázquez

Country	City
Spain	Madrid

Address: C. de Jorge Juan, 19, 1° 28001, 28001, Madrid

Network of private clinics, hospitals and specialized centers distributed throughout Spain.

Related internship programs:

- Clinical Nutrition in Medicine
- Aesthetic Plastic Surgery



Psychology

Policlínico HM La Paloma

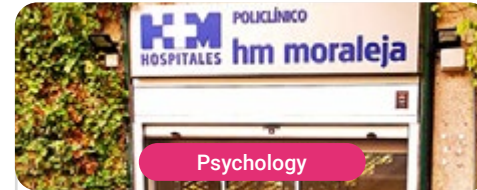
Country	City
Spain	Madrid

Address: Calle Hilados, 9, 28850, Torrejón de Ardoz, Madrid

Network of private clinics, hospitals and specialized centers distributed throughout Spain.

Related internship programs:

- Advanced Operating Room Nursing
- Orthodontics and Dentofacial Orthopedics



Psychology

Policlínico HM Moraleja

Country	City
Spain	Madrid

Address: Pº de Alcobendas, 10, 28109, Alcobendas, Madrid

Network of private clinics, hospitals and specialized centers distributed throughout Spain.

Related internship programs:

- Rehabilitation Medicine in Acquired Brain Injury Management



Psychology

Policlínico HM Sanchinarro

Country	City
Spain	Madrid

Address: Av. de Manoteras, 10, 28050, Madrid

Network of private clinics, hospitals and specialized centers distributed throughout Spain.

Related internship programs:

- Gynecological Care for Midwives
- Nursing in the Digestive Tract Department



Psychology

Policlínico HM Virgen del Val

Country	City
Spain	Madrid

Address: Calle de Zaragoza, 6, 28804, Alcalá de Henares, Madrid

Network of private clinics, hospitals and specialized centers distributed throughout Spain.

Related internship programs:

- Diagnosis in Physiotherapy
- Physiotherapy in Early Care



Psychology

Policlínico HM Rosaleda Lalín

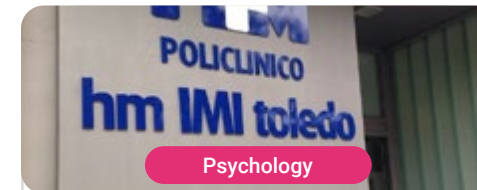
Country	City
Spain	Pontevedra

Address: Av. Buenos Aires, 102, 36500, Lalín, Pontevedra

Network of private clinics, hospitals and specialized centers distributed throughout Spain.

Related internship programs:

- Advances in Hematology and Hemotherapy
- Neurological Physiotherapy



Psychology

Policlínico HM Imi Toledo

Country	City
Spain	Toledo

Address: Av. de Irlanda, 21, 45005, Toledo

Network of private clinics, hospitals and specialized centers distributed throughout Spain.

Related internship programs:

- Electrotherapy in Rehabilitation Medicine
- Hair Transplantation

06

General Conditions

Civil Liability Insurance

This institution's main concern is to guarantee the safety of the trainees and other collaborating agents involved in the internship process at the company. Among the measures dedicated to achieve this is the response to any incident that may occur during the entire teaching-learning process.

To this end, this entity commits to purchasing a civil liability insurance policy to cover any eventuality that may arise during the course of the internship at the center.

This liability policy for interns shall have broad coverage and shall be taken out prior to the start of the practical internship period. That way professionals will not have to worry in case of having to face an unexpected situation and will be covered until the end of the internship program at the center.



General Conditions of the Internship Program

The general terms and conditions of the internship agreement for the program are as follows:

1. TUTOR: During the Internship Program, students will be assigned with two tutors who will accompany them throughout the process, answering any doubts and questions that may arise. On the one hand, there will be a professional tutor belonging to the internship center who will have the purpose of guiding and supporting the student at all times. On the other hand, they will also be assigned with an academic tutor, whose mission will be to coordinate and help the students during the whole process, solving doubts and facilitating everything they may need. In this way, the student will be accompanied and will be able to discuss any doubts that may arise, both clinical and academic.

2. DURATION: The internship program will have a duration of three continuous weeks, in 8-hour days, 5 days a week. The days of attendance and the schedule will be the responsibility of the center and the professional will be informed well in advance so that they can make the appropriate arrangements.

3. ABSENCE: If the students does not show up on the start date of the Internship Program, they will lose the right to it, without the possibility of reimbursement or change of dates. Absence for more than two days from the internship, without justification or a medical reason, will result in the professional's withdrawal from the internship, therefore, automatic termination of the internship. Any problems that may arise during the course of the internship must be urgently reported to the academic tutor.

4. CERTIFICATION: Professionals who pass the Internship Program will receive a certificate accrediting their stay at the center.

5. EMPLOYMENT RELATIONSHIP: The Internship Program shall not constitute an employment relationship of any kind.

6. PRIOR EDUCATION: Some centers may require a certificate of prior education for the Internship Program. In these cases, it will be necessary to submit it to the TECH internship department so that the assignment of the chosen center can be confirmed.

7. DOES NOT INCLUDE: The Internship Program will not include any element not described in the present conditions. Therefore, it does not include accommodation, transportation to the city where the internship takes place, visas or any other items not listed.

However, students may consult with their academic tutor for any questions or recommendations in this regard. The academic tutor will provide the student with all the necessary information to facilitate the procedures in any case.

07 Certificate

This program will allow you to obtain your **Internship Program diploma in Psychology Research** endorsed by **TECH Global University**, the world's largest online university.

TECH Global University is an official European University publicly recognized by the Government of Andorra ([official bulletin](#)). Andorra is part of the European Higher Education Area (EHEA) since 2003. The EHEA is an initiative promoted by the European Union that aims to organize the international training framework and harmonize the higher education systems of the member countries of this space. The project promotes common values, the implementation of collaborative tools and strengthening its quality assurance mechanisms to enhance collaboration and mobility among students, researchers and academics.

This **TECH Global University** title is a European program of continuing education and professional updating that guarantees the acquisition of competencies in its area of knowledge, providing a high curricular value to the student who completes the program.

Title: **Internship Program in Psychology Research**

Duration: **3 weeks**

Attendance: **Monday to Friday, 8-hour consecutive shifts**

Accreditation: **5 ECTS**





Internship Program
Psychology Research

Internship Program Psychology Research