

# Internship Program

## Psychological Intervention in Learning Disabilities



**tech** global  
university

Internship Program  
Psychological Intervention  
in Learning Disabilities

# Index

01

Introduction

---

p. 4

02

Why Study an  
Internship Program?

---

p. 6

03

Objectives

---

p. 8

04

Educational Plan

---

p. 10

05

Where Can I Do the  
Internship Program?

---

p. 12

06

General Conditions

---

p. 16

07

Certificate

---

p. 18

# 01

## Introduction

Learning disabilities are usually related to problems in reading, writing, attention or memory, aspects that have a negative influence on school performance and the ability to acquire new knowledge in children. As a result, techniques for detection and intervention have been enhanced from a psychological perspective, which means that professionals must apply them in their daily practice to optimize care for their patients. Because of this, TECH has developed this program, which will provide the psychologist with an excellent handling of the leading methods to evaluate and treat ADHD or visual and hearing impairment. All of this while enjoying exclusively practical experience in a first level clinical center.



*Through this program, you will master the leading mechanisms to assess and intervene psychologically in cases of patients with ADHD or visual and hearing impairment”*







Learning disabilities usually lead to a decrease in the ability to understand, process and retain information in young people who experience them. This fact can have a negative impact on both their academic performance and their ability to cope in their daily lives, impacting the mental health of children and adolescents. Therefore, psychologists are obliged to handle recent techniques that allow them to assess and treat with solvency these disorders, in order to contribute to improve the quality of life of these patients.

This is why TECH has chosen to design this program, which will enable the professional to obtain the most up-to-date competences in the field of Psychological Intervention in Learning Disabilities, in an exclusively practical way. During 3 weeks, you will enjoy the possibility of accessing a highly prestigious clinical environment. With the help of the best specialists in this area of Psychology, you will master the performance of advanced tests to diagnose LD or therapeutic strategies to address Dyslexia or motor disability. Likewise, you will delve into the management of disorders related to attention and memory disorders.

Throughout this practical experience, the student will be accompanied and guided at all times by a specially assigned tutor. Thanks to the role of the experts, the high quality of the learning process will be guaranteed, since they will be responsible both for ensuring the correct teaching and for resolving any doubts you may have.

# 02

## Why Study an Internship Program?

In the vast majority of fields, practical experience is fundamental to achieve outstanding professional success. In the area of Psychology, it is not enough to have theoretical knowledge about the advances in Psychological Intervention in Learning Disabilities, but it is essential to know how to apply them in the daily work. In order to meet this need, TECH has developed this program, with which students will have the opportunity to be part of a leading clinical environment for 3 weeks. Along with expert professionals in this field, they will acquire skills that will boost their professional development in this branch of Mental Health.



*Enjoy the unique opportunity to perfect and update your competencies in Psychological Intervention in Learning Disabilities in an exclusively practical way”*

### **1. Updating from the Latest Technology Available**

In recent years, the field of Psychological Intervention in Learning Disabilities has evolved significantly thanks to advances in the methods of evaluation, approach and treatment of these disorders. Because of this, TECH has created this Internship Program, which will enable the students to incorporate these innovations into their daily practice and place themselves at the forefront of Psychology.

### **2. Gaining In-depth Knowledge from the Experience of Top Specialists**

Throughout the duration of the program, students will have the opportunity to be part of an exceptional work team, composed of the most prominent experts in the world of Psychology, who will teach them the most up-to-date skills in Psychological Intervention in Learning Disabilities. In addition, each student will receive personalized guidance from a tutor who will help them improve their skills.

### **3. Entering first-class Professional environments**

TECH carries out an exhaustive selection process of the centers where the Internship Program will take place, with the objective of guaranteeing that the students can develop in a first class clinical environment. In this way, they will be able to work in highly demanding teams and with an exceptional professional quality.





#### **4. Putting the acquired knowledge into daily practice from the very first moment**

Nowadays, it is common to find educational programs that do not meet the daily needs of workers, providing theoretical content with little real application. For this reason, TECH has created a program with an innovative pedagogical approach, based on internships, which will allow students to solidly improve their skills in a high-level professional environment.

#### **5. Expanding the Boundaries of Knowledge**

TECH offers students the opportunity to take this Internship Program in prestigious hospitals, in order to learn from professionals with extensive experience in Psychological Intervention in Learning Disabilities. This is an exclusive opportunity that only this educational institution can offer its students.



*You will have full practical immersion at the center of your choice"*

# 03

## Objectives

The objective of this Internship Program is to provide a complete update to the professional in the field of Psychological Intervention in Learning Disabilities. Therefore, students will have the opportunity to delve into the manifestations of these disorders, handle the most advanced techniques for their assessment and master the latest techniques for their intervention. All this, in only 120 hours and in an exclusively practical way.



### General Objectives

---

- Make reliable diagnoses and provide appropriate interventions in each psycho-educational setting
- Apply specific intervention techniques and programs for Learning Disabilities
- Carry out psycho-pedagogical reports and intervention proposals for learning disabilities



*This is the best opportunity to get up to date on Psychological Intervention in Learning Disabilities”*







## Specific Objectives

---

- ♦ Delve into the concepts of learning disabilities and developmental disorders
- ♦ Examine the main characteristics and associated disorders of dyslexia, dysgraphia and dysorthography
- ♦ Provide support to guidance teams in education centers, as well as specialized EOEPS
- ♦ Analyze the different learning theories, with the main authors and studies on the subject
- ♦ Study cognitive learning models, as well as constructivist teaching models
- ♦ Discern the specificities of diversity care and the psycho-educational challenges it raises
- ♦ Study the concept of memory, as well as its implication in Learning Disabilities
- ♦ Delve into the cognitive and neurofunctional models of numerical processing
- ♦ Study, in-depth, the main neuropsychological and psycholinguistic models in reading and writing
- ♦ Study Dyslexia, Dyscalculia, Dysgraphia, ADHD, Severe Behavioral Disorder and more possible Learning Disabilities
- ♦ Analyze the characteristics of high abilities and why it is considered a Learning Disability
- ♦ Assess the role of socio-educationally disadvantaged children
- ♦ Outline the evaluation protocols to be followed by formal education centers at different educational levels
- ♦ Examine different standardized assessment tests in reading and writing
- ♦ Analyze assessment protocols in non-formal education, higher education or teaching skills
- ♦ Study the characteristics of speech disorders such as aphasia, dyslalia, dysglossia or dysphonia
- ♦ Diagnose intellectual disability, in conjunction with psycho-educational assessment and classroom intervention
- ♦ Classify psycho-educational intervention guidelines in classrooms with visually and hearing-impaired children
- ♦ Assess Learning Disabilities with respect to visual impairments, motor impairments and intellectual disabilities
- ♦ Understand the areas of psycho-pedagogy in reading, writing and mathematics
- ♦ Distinguish between Learning Disabilities and Specific Learning Disabilities
- ♦ Introduce the creation and writing of pedagogical reports with criteria for intervention proposal selection
- ♦ Assess psycho-educational programs in terms of Learning Disabilities
- ♦ Study individualized educational programs from a theoretical perspective
- ♦ Conceptualize Learning Disabilities intervention, with different levels
- ♦ Develop reading and writing intervention programs
- ♦ Analyze Learning Disabilities in adults and post-compulsory education
- ♦ Study the ethical and deontological aspects in the issuance of multidisciplinary psycho-pedagogical reports
- ♦ Analyze school psychologist's competencies
- ♦ Understand the role of the school psychologist in the educational future

# 04 Educational Plan

This Internship Program will take place during 3 consecutive weeks, with daily 8-hour days from Monday to Friday, in which students will join a prestigious multidisciplinary team in a clinical center. During this period, they will have the opportunity to deal with real patients, in an exceptional work environment, using the most advanced techniques and tools for Psychological Intervention in Learning Disabilities.

In this completely practical Internship Program, the activities are aimed at developing and perfecting the skills necessary to provide psychological attention in areas and conditions that require highly qualified professionals, and are oriented towards specific expertise for practicing the activity, in a safe environment for the patient and with highly professional performance.

With this innovative pedagogical approach, students will be prepared to successfully face the up-to-date challenges of their profession, with the latest skills to ensure the mental wellbeing and cognitive development of their patients.

The practical education will be carried out with the active participation of the student performing the activities and procedures of each area of competence (learning to learn and learning to do), with the accompaniment and guidance of teachers and other fellow trainees that facilitate teamwork and multidisciplinary integration as transversal competencies for psychology praxis (learning to be and learning to relate).





The procedures described below will be the basis of the practical part of the program, and their implementation will be subject to the center's own availability and workload, the proposed activities being the following:

Module	Practical Activity
Action protocols for the diagnosis and assessment of Learning Disabilities in educational centers	Outline the evaluation protocols to be followed by formal education different educational levels
	Perform different assessment tests to detect possible reading and writing disabilities
Assessment and intervention in developmental disorders in Compulsory the stage of Education	Diagnose cases of intellectual disability
	Carry out effective interventions in patients with aphasia, Dyslalia or Dysphonia
	Perform Psychological Intervention with Children with Visual and Hearing Impairments
Differential diagnosis and intervention in Learning Disabilities	Undertake the assessment of different types of learning disabilities
	Develop intervention programs for patients with reading and writing disabilities
Intervention programs in learning disabilities	Create and write a pedagogical report with criteria for the selection of intervention proposals
	Carry out the issuance of a multidisciplinary psycho-pedagogical report
	Assess psycho-educational programs in terms of Learning Disabilities



# 05

## Where Can I Do the Internship Program?

TECH offers the opportunity to carry out the Internship Program in a first level hospital center, located in different geographical locations to ensure the student's comfort. During 3 weeks, students will have the opportunity to improve their skills in Psychological Intervention in Learning Disabilities in a high quality clinical environment.



*Do your Internship Program in prestigious hospitals located in different geographical locations, choosing the one that best suits your needs".*





The student will be able to do this program at the following centers:



Psychology

### Hospital HM Modelo

Country: Spain  
City: La Coruña

Address: Rúa Virrey Osorio, 30, 15011, A Coruña

Network of private clinics, hospitals and specialized centers distributed throughout Spain.

**Related internship programs:**

- Anaesthesiology and Resuscitation
- Palliative Care



Psychology

### Hospital HM Rosaleda

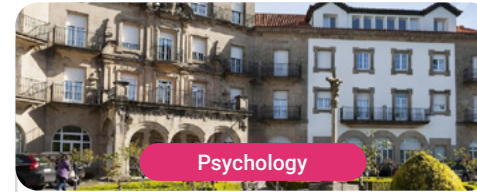
Country: Spain  
City: La Coruña

Address: Rúa de Santiago León de Caracas, 1, 15701, Santiago de Compostela, A Coruña

Network of private clinics, hospitals and specialized centers distributed throughout Spain.

**Related internship programs:**

- Hair Transplantation
- Orthodontics and Dentofacial Orthopedics



Psychology

### Hospital HM La Esperanza

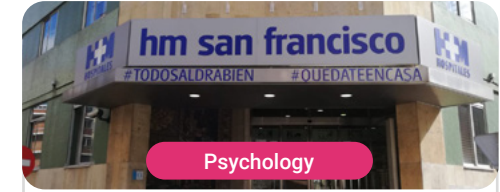
Country: Spain  
City: La Coruña

Address: Av. das Burgas, 2, 15705, Santiago de Compostela, A Coruña

Network of private clinics, hospitals and specialized centers distributed throughout Spain.

**Related internship programs:**

- Oncology Nursing
- Clinical Ophthalmology



Psychology

### Hospital HM San Francisco

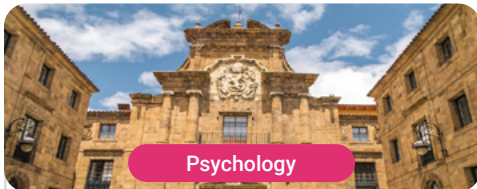
Country: Spain  
City: León

Address: C. Marqueses de San Isidro, 11, 24004, León

Network of private clinics, hospitals and specialized centers distributed throughout Spain.

**Related internship programs:**

- Update in Anesthesiology and Resuscitation
- Nursing in the Traumatology Department



Psychology

### Hospital HM Regla

Country: Spain  
City: León

Address: Calle Cardenal Landázuri, 2, 24003, León

Network of private clinics, hospitals and specialized centers distributed throughout Spain.

**Related internship programs:**

- Update on Psychiatric Treatment in Minor Patients



Psychology

### Hospital HM Montepríncipe

Country: Spain  
City: Madrid

Address: Av. de Montepríncipe, 25, 28660, Boadilla del Monte, Madrid

Network of private clinics, hospitals and specialized centers distributed throughout Spain.

**Related internship programs:**

- Palliative Care
- Aesthetic Medicine



Psychology

### Hospital HM Torrelodones

Country: Spain  
City: Madrid

Address: Av. Castillo Olivares, s/n, 28250, Torrelodones, Madrid

Network of private clinics, hospitals and specialized centers distributed throughout Spain.

**Related internship programs:**

- Anaesthesiology and Resuscitation
- Palliative Care



Psychology

### Hospital HM Sanchinarro

Country: Spain  
City: Madrid

Address: Calle de Oña, 10, 28050, Madrid

Network of private clinics, hospitals and specialized centers distributed throughout Spain.

**Related internship programs:**

- Anaesthesiology and Resuscitation
- Palliative Care





Psychology

### Policlínico HM Gabinete Velázquez

Country	City
Spain	Madrid

Address: C. de Jorge Juan, 19, 1° 28001, 28001, Madrid

Network of private clinics, hospitals and specialized centers distributed throughout Spain.

**Related internship programs:**

- Clinical Nutrition in Medicine
- Aesthetic Plastic Surgery



Psychology

### Policlínico HM La Paloma

Country	City
Spain	Madrid

Address: Calle Hilados, 9, 28850, Torrejón de Ardoz, Madrid

Network of private clinics, hospitals and specialized centers distributed throughout Spain.

**Related internship programs:**

- Advanced Operating Room Nursing
- Orthodontics and Dentofacial Orthopedics



Psychology

### Policlínico HM Virgen del Val

Country	City
Spain	Madrid

Address: Calle de Zaragoza, 6, 28804, Alcalá de Henares, Madrid

Network of private clinics, hospitals and specialized centers distributed throughout Spain.

**Related internship programs:**

- Diagnosis in Physiotherapy
- Physiotherapy in Early Care



Psychology

### Policlínico HM Rosaleda Lalín

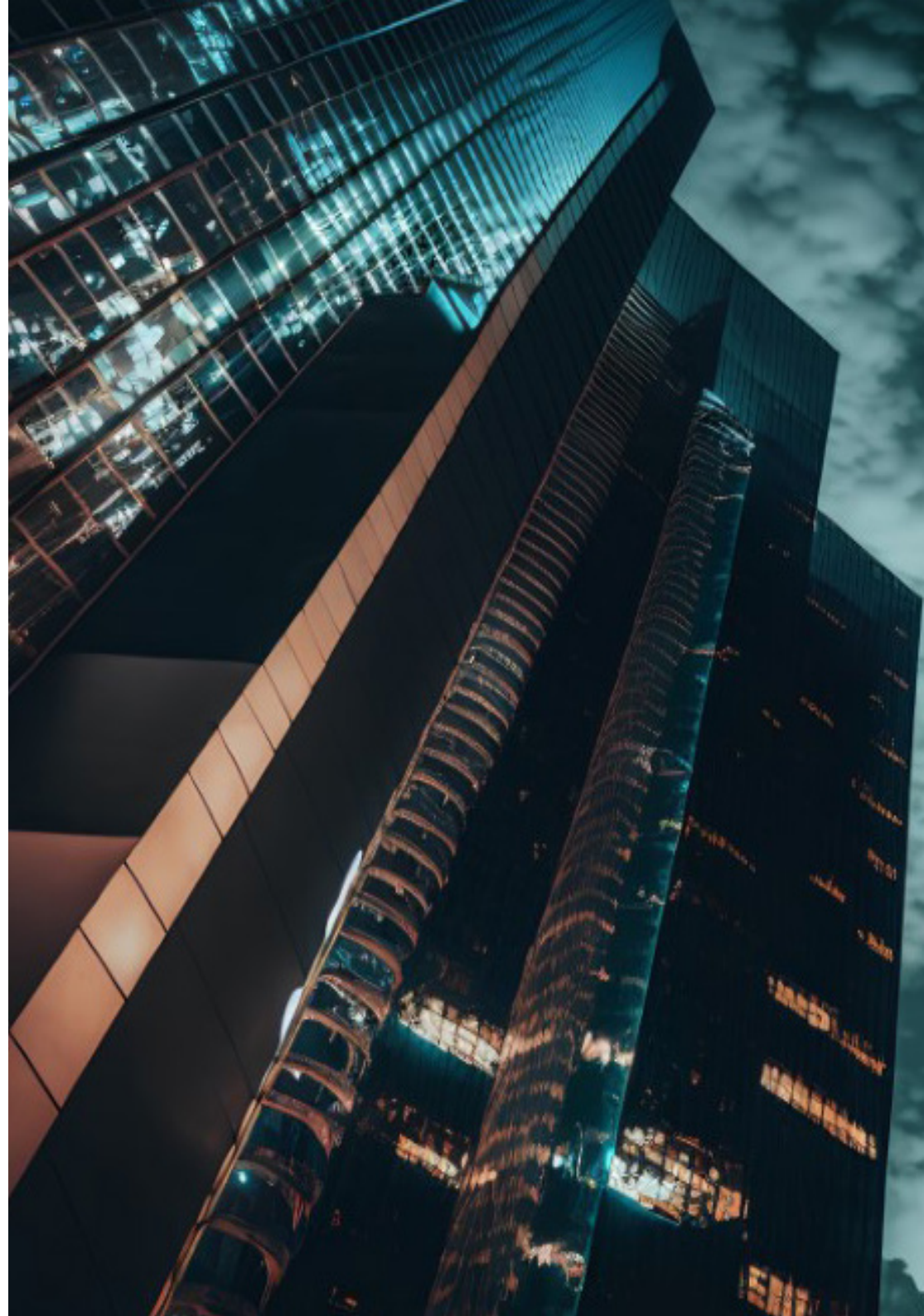
Country	City
Spain	Pontevedra

Address: Av. Buenos Aires, 102, 36500, Lalín, Pontevedra

Network of private clinics, hospitals and specialized centers distributed throughout Spain.

**Related internship programs:**

- Advances in Hematology and Hemotherapy
- Neurological Physiotherapy







Psychology

### Policlínico HM Moraleja

Country City  
Spain Madrid

Address: P.º de Alcobendas, 10, 28109, Alcobendas, Madrid

Network of private clinics, hospitals and specialized centers distributed throughout Spain.

**Related internship programs:**

- Rehabilitation Medicine in Acquired Brain Injury Management



Psychology

### Policlínico HM Sanchinarro

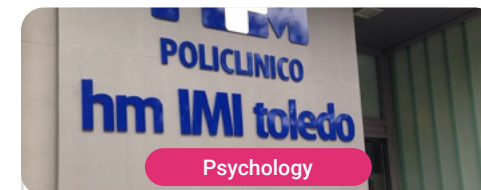
Country City  
Spain Madrid

Address: Av. de Manoteras, 10, 28050, Madrid

Network of private clinics, hospitals and specialized centers distributed throughout Spain.

**Related internship programs:**

- Gynecological Care for Midwives
- Nursing in the Digestive Tract Department



Psychology

### Policlínico HM Imi Toledo

Country City  
Spain Toledo

Address: Av. de Irlanda, 21, 45005, Toledo

Network of private clinics, hospitals and specialized centers distributed throughout Spain.

**Related internship programs:**

- Electrotherapy in Rehabilitation Medicine
- Hair Transplantation

# 06

## General Conditions

### Civil Liability Insurance

This institution's main concern is to guarantee the safety of the trainees and other collaborating agents involved in the internship process at the company. Among the measures dedicated to achieve this is the response to any incident that may occur during the entire teaching-learning process.

To this end, this entity commits to purchasing a civil liability insurance policy to cover any eventuality that may arise during the course of the internship at the center.

This liability policy for interns will have broad coverage and will be taken out prior to the start of the Internship Program period. That way professionals will not have to worry in case of having to face an unexpected situation and will be covered until the end of the internship program at the center.



## General Conditions of the Internship Program

The general terms and conditions of the internship agreement for the program are as follows:

**1. TUTOR:** During the Internship Program, students will be assigned with two tutors who will accompany them throughout the process, answering any doubts and questions that may arise. On the one hand, there will be a professional tutor belonging to the internship center who will have the purpose of guiding and supporting the student at all times. On the other hand, they will also be assigned with an academic tutor, whose mission will be to coordinate and help the students during the whole process, solving doubts and facilitating everything they may need. In this way, the student will be accompanied and will be able to discuss any doubts that may arise, both clinical and academic.

**2. DURATION:** The internship program will have a duration of three continuous weeks, in 8-hour days, 5 days a week. The days of attendance and the schedule will be the responsibility of the center and the professional will be informed well in advance so that they can make the appropriate arrangements.

**3. ABSENCE:** If the students does not show up on the start date of the Internship Program, they will lose the right to it, without the possibility of reimbursement or change of dates. Absence for more than two days from the internship, without justification or a medical reason, will result in the professional's withdrawal from the internship, therefore, automatic termination of the internship. Any problems that may arise during the course of the internship must be urgently reported to the academic tutor.

**4. CERTIFICATION:** Professionals who pass the Internship Program will receive a certificate accrediting their stay at the center.

**5. EMPLOYMENT RELATIONSHIP:** The Internship Program shall not constitute an employment relationship of any kind.

**6. PRIOR EDUCATION:** Some centers may require a certificate of prior education for the Internship Program. In these cases, it will be necessary to submit it to the TECH internship department so that the assignment of the chosen center can be confirmed.

**7. DOES NOT INCLUDE:** The Internship Program will not include any element not described in the present conditions. Therefore, it does not include accommodation, transportation to the city where the internship takes place, visas or any other items not listed.

However, students may consult with their academic tutor for any questions or recommendations in this regard. The academic tutor will provide the student with all the necessary information to facilitate the procedures in any case.



# 07 Certificate

This program will allow you to obtain your **Internship Program diploma in Psychological Intervention in Learning Disabilities** endorsed by **TECH Global University**, the world's largest online university.

**TECH Global University** is an official European University publicly recognized by the Government of Andorra ([official bulletin](#)). Andorra is part of the European Higher Education Area (EHEA) since 2003. The EHEA is an initiative promoted by the European Union that aims to organize the international training framework and harmonize the higher education systems of the member countries of this space. The project promotes common values, the implementation of collaborative tools and strengthening its quality assurance mechanisms to enhance collaboration and mobility among students, researchers and academics.

This **TECH Global University** title is a European program of continuing education and professional updating that guarantees the acquisition of competencies in its area of knowledge, providing a high curricular value to the student who completes the program.

Title: **Internship Program in Psychological Intervention in Learning Disabilities**

Duration: **3 weeks**

Attendance: **Monday to Friday, 8-hour consecutive shifts**

Accreditation: **4 ECTS**





**Internship Program**  
Psychological Intervention  
in Learning Disabilities

# Internship Program Psychological Intervention in Learning Disabilities

