

Hybrid Professional Master's Degree Time-Limited Psychotherapy





Hybrid Professional Master's Degree

Time-Limited Psychotherapy

Modality: Hybrid (Online + Clinical Internship)

Duration: 12 months

Certificate: TECH Global University

Accreditation: 60 + 4 ECTS

Website: www.techtute.com/us/psychology/hybrid-professional-master-degree/hybrid-professional-master-degree-time-limited-psychotherapy

Index

01

Introduction

p. 4

02

Why Study this Hybrid
Professional Master's
Degree?

p. 8

03

Objectives

p. 12

04

Skills

p. 18

05

Course Management

p. 22

06

Structure and Content

p. 26

07

Clinical Internship

p. 30

08

Where Can I Do the Clinical
Internship?

p. 36

09

Study Methodology

p. 40

10

Certificate

p. 50

01

Introduction

Time-Limited Psychotherapy has gained great importance nowadays due to its effectiveness in the treatment of mental, emotional and behavioral disorders. Its brief approach, focused on specific goals and problem solving, makes it a very valuable option for patients and therapists. In that sense, TECH has developed this program in Time-Limited Psychotherapy as an excellent option for psychology professionals who wish to update their skills in this innovative therapeutic area. The combination of 100% online study with the guidance of expert tutors and practical training in prestigious clinical centers guarantees a complete and up-to-date training in the latest techniques and approaches in TLP, allowing students to provide cutting-edge psychological care to their patients.



“

To stand out in the Clinical Psychology environment, this Hybrid Professional Master's Degree in Time-Limited Psychotherapy is an innovative solution. Enroll now and know all the advantages it can offer you”

Today, Time Limited Psychotherapy (TLP) has established itself as one of the most effective options for the treatment of psychological disorders. This therapy, which focuses on achieving rapid and significant changes in a limited number of sessions, has gained popularity thanks to its effectiveness in the treatment of emotional and behavioral problems.

In this context, TECH, the world's largest online university offers the Hybrid Professional Master's Degree in Time-Limited Psychotherapy, a degree designed for psychology professionals to update their skills in this innovative therapeutic area.

The structure of the program is designed for students to acquire a complete and updated theoretical education in the scientific and technological advances in TLP, through a 100% online study with the guidance of expert tutors. In addition, the program includes a 3-week internship program in a reference clinical center, where students will be able to apply in practice the techniques and approaches learned in the program.

During the theoretical period, students will have access to the latest advances in TLP, including the scientific and neurobiological principles of this therapy, the characteristics of TLP and the role of the therapist, and the contexts in the development of self-concept, among other relevant topics. The internship program, on the other hand, will allow them to approach clinical case studies and learn from the best professionals in a state-of-the-art environment. In addition, they will be guided by expert tutors, who will help them resolve any doubts they may have throughout the process.

The program will have a renowned International Guest Director as part of the teaching team. Thanks to her extensive research experience, the specialist will offer 10 exclusive Masterclasses to explore with students the latest trends in the field of Psychotherapy.

This **Hybrid Professional Master's Degree in Time-Limited Psychotherapy** contains the most complete and up-to-date program on the market. The most important features include:

- Development of more than 100 clinical cases presented by professionals in Time-Limited Psychotherapy and experienced university professors
- The graphic, schematic, and practical contents with which they are created, provide scientific and practical information on the disciplines that are essential for professional practice
- The program offers a holistic approach that allows the student to acquire competencies to provide comprehensive psychological care to their patients, addressing not only the symptoms but also the underlying causes of psychological disorders
- The possibility of applying in practice the techniques and approaches learned in the program
- Quality, up-to-date teaching of the latest techniques and approaches is guaranteed
- An algorithm-based interactive learning system for decision-making in the clinical situations presented throughout the course
- Practical clinical guides on approaching different pathologies
- Special emphasis on test-based medicine and research methodologies in Psychological Intervention
- All this will be complemented by theoretical lessons, questions to the expert, debate forums on controversial topics, and individual reflection assignments
- Content that is accessible from any fixed or portable device with an Internet connection
- In addition, you will be able to carry out a clinical internship in one of the best hospital centers in the world

“Update your knowledge through the Physical Therapy Intervention of Acquired Brain Injury for the Rehabilitation Physician program”

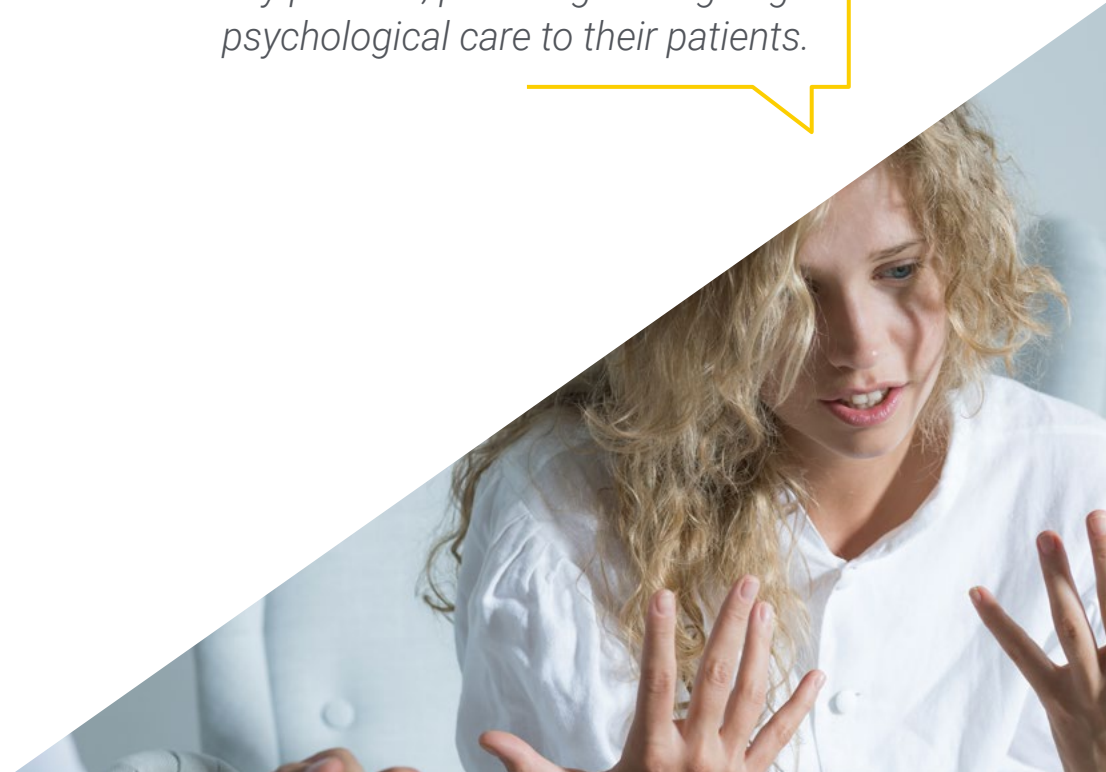
“ *This Hybrid Professional Master's Degree in Time-Limited Psychotherapy provides the opportunity to update knowledge in this innovative therapeutic area, through a complete theoretical program and practical training in prestigious clinical centers*”

In this proposed Master's Degree, of professionalizing character and blended learning modality, the program is aimed at updating psychology professionals who develop their functions in time-limited psychotherapy intervention, and who require a high level of qualification. The contents are based on the latest scientific evidence, and oriented in a didactic way to integrate the theoretical knowledge in the specialized practice and the theoretical-practical elements will facilitate the updating of knowledge and will allow decision making in patient management.

Thanks to the multimedia content, developed with the latest educational technology, Psychology professionals will benefit from situated and contextual learning, i.e., a simulated environment that will provide immersive learning programmed to train in real situations. This program is designed around Problem-Based Learning, whereby the professional must try to solve the different professional practice situations that arise throughout the program. For this purpose, students will be assisted by an innovative interactive video system created by renowned experts.

Take an intensive 3-week internship program in a prestigious center and acquire all the knowledge to grow personally and professionally.

This program offers a holistic approach that will allow the specialist to apply the latest techniques and approaches in their daily practice, providing cutting-edge psychological care to their patients.



02

Why Study this Hybrid Professional Master's Degree?

The Hybrid Professional Master's Degree in Time-Limited Psychotherapy is an excellent opportunity for psychology professionals to update their knowledge in this innovative therapeutic area. This program offers a complete theoretical education in the characteristics of Time-Limited Psychotherapy, the role of the therapist in the therapeutic process and the contexts in the development of the patient's self-concept. In addition, the curriculum also includes a solid training in the scientific and neurobiological basis of Time-Limited Psychotherapy. This holistic approach will allow the specialist to apply the latest techniques and approaches in their daily practice, providing cutting-edge psychological care to their patients.

“

TECH offers you the opportunity to enter into real clinical environments and maximum demand to delve, with the help of the best specialists, into the latest advances in Time-Limited Psychotherapy”

1. Updating from the latest technology available

Time-Limited Psychotherapy has been revolutionized in recent years thanks to technological advances, such as the application of artificial intelligence in the identification of emotional patterns and neuroscience applied to the understanding of cognitive processes. For this reason, TECH has created this program so that the specialist can enter cutting-edge clinical environments, accessing state-of-the-art technology in the field of Time-Limited Psychotherapy.

2. Gaining in-depth knowledge from the experience of top specialists

The teaching team that accompanies the specialist during the practical training in Time-Limited Psychotherapy is made up of highly trained and recognized professionals in the field. Each student has a specifically designated mentor to guide them through each step of the process, from patient assessment to the development of the therapeutic plan. The opportunity to see real patients in a state-of-the-art setting allows the specialist to incorporate the most effective procedures and approaches in Time-Limited Psychotherapy into their daily practice.

3. Entering first-class clinical environments

TECH carefully selects the clinical centers available for practical training in Time-Limited Psychotherapy, ensuring that specialists have access to a prestigious clinical environment. In these environments, students can experience the day-to-day of a demanding, rigorous and comprehensive area of work, always applying the latest scientific theses and postulates in their work methodology.





4. Combining the best theory with state-of-the-art practice

TECH's Time-Limited Psychotherapy Internship Program is 100% hands-on, allowing students to learn state-of-the-art therapeutic procedures and put them into professional practice in just three weeks. In this way, the best theory is combined with the most advanced practice, so that specialists can update their therapeutic skills and provide the best care to their patients.

5. Expanding the boundaries of knowledge

TECH offers students the opportunity to undertake practical training in prestigious international centers. With this option, specialists can broaden their experience and learn from the best professionals working in first class hospitals in different parts of the world. A unique opportunity offered only by the world's largest online university: TECH.

“

You will have full practical immersion at the center of your choice”

03

Objectives

The Hybrid Professional Master's Degree in Time-Limited Psychotherapy aims to train students in the fundamental concepts of Time-Limited Psychotherapy intervention. Students will learn to master the neurological and biochemical laws that influence the patient's emotional response to therapeutic intervention. In addition, the program will enable students to describe and utilize the array of technologies available for the change of traumatic memories to memories of recollection. Consequently, the program addresses the reciprocal interaction between therapist and patient, enabling students to understand and explain this bonding relationship. The three-week hands-on training complements theoretical learning and allows students to apply the acquired knowledge in real clinical care situations.



“

Get the most cutting-edge knowledge conveniently 100% online and put it into practice for 3 weeks face-to-face”



General Objective

- The Hybrid Professional Master's Degree in Time-Limited Psychotherapy aims to provide theoretical and practical training exclusively focused on updating the diagnostic and therapeutic procedures of the specialty. The theoretical part involves the rigorous study of an academic itinerary designed by experts and the practical training is carried out through a rigorous and academically designed hospital stay in a hospital center of high scientific quality and technological innovation, with recognized professionals. Students will have the opportunity to perfect and improve their skills in the medical care of patients requiring psychological assistance, addressing the main interventions of the specialist.



This program is flexible and is taught online, without face-to-face classes with fixed schedules. It is a program specially designed for psychology professionals like you”



Specific Objectives

Module 1. Features in Time-Limited Psychotherapy

- ◆ Know the model of Time-Limited Psychotherapy
- ◆ Know the origin of Time-Limited Psychotherapy
- ◆ Identify the different intervention scenarios
- ◆ Study the dynamics in the micro, meso and macro contexts
- ◆ Delve into the bases of interaction

Module 2. Establishment of the Therapeutic Bond

- ◆ Change the patient's beliefs for verifiable facts
- ◆ Admire unconditionally, without judgment, without criticism, just contemplating
- ◆ Get the patient to be able to imagine their desires
- ◆ Make listening the bridge to building therapeutic relationships
- ◆ Know how to be always present

Module 3. The Therapist's Role

- ◆ Contain with safety and craft
- ◆ Identify the role of the therapist as the main engine of the therapy
- ◆ Implement the mentor therapist, indispensable to achieve the right bonding
- ◆ Describe the territory of the family therapist and of the mentor therapist
- ◆ Teach how to live together in an intervention where multidisciplinary work is totally normal

Module 4. Role of Clinical Hypnosis in Time-Limited Psychotherapy

- ♦ Know how to disconnect the patient from their thoughts and place them in their bodily sensations
- ♦ Identify the illness and the disorder as a way of expressing a poorly adapted form of survival
- ♦ Know how to settle in the emotional sphere of the patient without having a contamination that affects the therapist's balance
- ♦ Know the whole process with induced head movements

Module 5. Contexts in the Development of Self-Concept

- ♦ Allow the disease to be a messenger that tells us where the pain and harm is
- ♦ Prevent the patient from connecting only with the symptom
- ♦ Know that the reality for the patient is what they record in their brain, and not so much what could have happened
- ♦ Discover how in the relationships of the mesocontext, micro deficiencies are maintained
- ♦ Detect indicators of health and disease in relationships in the mesocontext

Module 6. Scientific and Neurobiological Principles of T.L.P.

- ♦ Know that the territory of intervention is more in the virtual realm than in what happens
- ♦ Discover that what is important is not what happens but what the patient does with what happens
- ♦ Know that the reality for the patient is what they record in their brain, and not so much what could have happened
- ♦ Identify the chemical families and interactions between them





Module 7. Phases in the Intervention with T.L.P.

- ♦ Emphasize what we feel with the patient and above all what the patient feels with our actions
- ♦ Empower the student not to have protocols for disorders, but to make a different intervention protocol for each patient
- ♦ Not be so much in solving as in building
- ♦ Develop the different phases of intervention with T.L.P.

Module 8. Universe of Intervention with T.L.P.

- ♦ Propose from the first moment, to be present, to accompany and to intervene in the traumatic emotional memory, in return the patient is the one who executes the whole process
- ♦ Appreciate the importance of love and emotion in the solution
- ♦ Take into account not only what produced the problem, but also what maintains it
- ♦ Organize the patient's own mechanisms to manage their conflict

04 Skills

With the purpose of strengthening the skills of professionals who wish to incorporate the methods of Time-Limited Psychotherapy in their daily practice. Throughout the program, students will have the opportunity to improve their skills to become an important referential figure for the patient, to induce altered states of consciousness in the patient so that they can face their traumatic experiences, and to accompany and guide them in the therapeutic dialectic. In addition, clinical case studies will provide valuable support to achieve these goals.



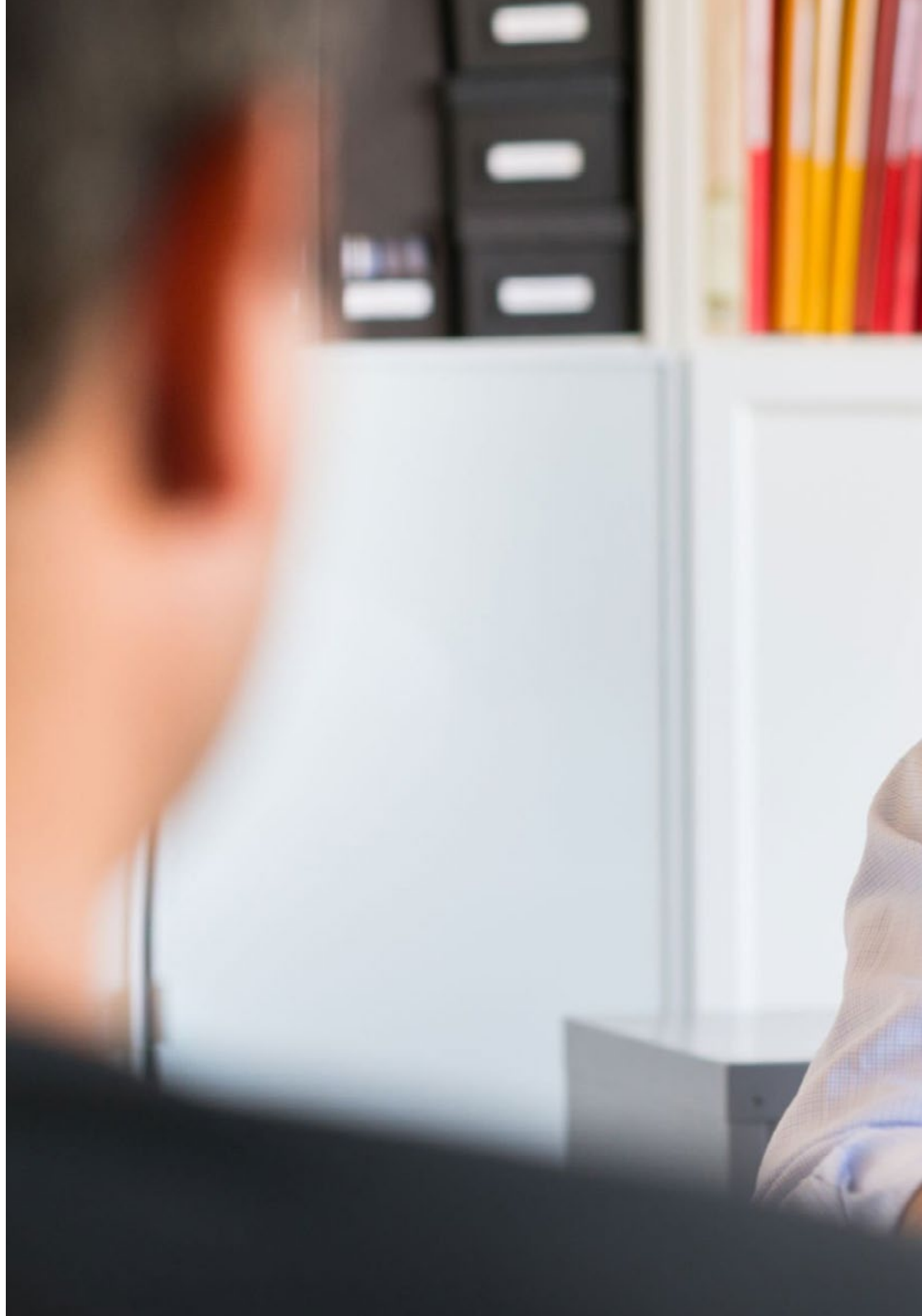
“

Develop an ideal intellectual background to carry out quality psychological interventions. Acquire the necessary skills to excel in the application of Time-Limited Psychotherapy”



General Skills

- ♦ Describe the importance of the link in health and disease
- ♦ Enable the therapist to emerge as a basic referential person in the patient
- ♦ Develop a relationship with the patient that culminates in safety and trust
- ♦ Allow the patients to express their ignominious side
- ♦ Learn to admire without judging, without criticizing, just contemplating the patient
- ♦ Teach skills to induce altered states of consciousness so that they can settle in the representation of their traumatic experiences
- ♦ Carry out the therapeutic work effectively, in an average of 12 one-hour sessions
- ♦ Know how to free the patients from the emotional sequestration in which they find themselves
- ♦ Be able to move the patient from suffering to satisfaction
- ♦ Develop within the profession in terms of working with other health professionals, acquiring skills to work as a team
- ♦ Recognize the need to maintain your professional skills and keep them up to date, with special emphasis on autonomous and continuous learning of new information
- ♦ Develop the capacity for critical analysis and research in the field of their profession





Specific Skills

- ♦ Describe and integrate the hallmarks of time-limited psychotherapy
- ♦ Develop all the theorization of this model
- ♦ Understand that what is important is not so much what is said or done, but what is felt and sensed
- ♦ Discover that magical space between patient and therapist that we call the bond
- ♦ Review the background on Time-Limited Psychotherapy
- ♦ Find in the patient's history the current state of things happening in the subject's life
- ♦ Discover the errors of other models that do not allow therapeutic change
- ♦ Obtain and train to achieve an adequate therapeutic link for each patient
- ♦ Emphasize the maneuver of accompanying and leading in the therapeutic dialectic
- ♦ Know how to escort and contain the patient
- ♦ Allow patients to talk about their reason for consultation without interrupting them during the first sessions
- ♦ Place the reason for consultation as a guide for the intervention process

05

Course Management

TECH's Hybrid Professional Master's Degree in Time-Limited Psychotherapy has a highly qualified teaching staff in this field of psychotherapy. This faculty offers students the opportunity to obtain the latest information and techniques in this field 100% online. Students will have access to the best specialists in the area of time-limited psychotherapy, which guarantees high quality teaching. In addition, the proximity and human quality of the teachers will allow students to resolve any doubts they may have about the content of the program.





“

The most recognized experts in the field of Time-Limited Psychotherapy will offer you the latest technological and scientific advances in this area”

International Guest Director

Dr. Robin Gay is a clinical psychologist specialized in the treatment of **substance use disorders and co-occurring conditions**. With a particular focus on the effects of these conditions on **cognitive functioning**, her work has sought to understand how these influences impact treatment outcomes. In addition, her interest in enhancing the recovery of her patients has led her to develop innovative programs in **mental health and addiction care**.

Throughout her professional career, she has held significant roles in prestigious institutions. As such, she has been the **Director of Psychological Services** at Fernside, an **addiction recovery program** unique to **McLean Hospital**, which specializes in the treatment of **substance use disorders and co-occurring conditions**, where she has led diverse teams to provide comprehensive and personalized treatment. Likewise, her **research** work has been presented at numerous **congresses and conferences**, having received the prestigious **Sidney Orgel Award**, given by the **New York State Psychological Association**, where she has also been elected **Secretary** and served on the **board of directors**, demonstrating her commitment to the development and promotion of **mental health**.

In turn, she has published several **articles in peer-reviewed journals**, exploring the relationship between **substance use and cognitive functioning**. In fact, her **research** has brought new approaches to **addiction treatment** and has significantly influenced **clinical practice** nationally and internationally. On the other hand, her **academic career** has included a **doctorate in Clinical Psychology** from the **New School for Social Research in New York**, as well as a **pre-doctoral internship** at **Mount Sinai Hospital in Manhattan**, where she acquired valuable skills in the management of **complex disorders**.



Dr. Gay, Robin

- ♦ Director of Psychological Services at the Fernside Program at McLean Hospital, Boston, USA.
- ♦ Secretary of the New York State Psychological Association
- ♦ Doctor in Clinical Psychology from the New School for Social Research
- ♦ Bachelor's Degree in Psychology from Marlboro College
- ♦ Sidney Orgel Award of the New York State Psychological Association
- ♦ Member of: Commonwealth of Massachusetts Board of Registration of Psychologists

“

Thanks to TECH, you will be able to learn with the best professionals in the world"

06

Structure and Content

TECH's Hybrid Professional Master's Degree in Time-Limited Psychotherapy combines online theoretical instruction with a 3-week practical training at a clinical referral center. Students will have the opportunity to learn from expert teachers in the field of Time-Limited Psychotherapy in an online teaching environment. The three-week hands-on training will allow students to apply their knowledge and skills in a real clinical setting, working alongside renowned professionals. This program offers a unique combination of theoretical and practical teaching to prepare students for a successful clinical practice in Psychotherapy.



“

Learn hands-on, accompanied by professionals with great expertise in the application of Time-Limited Psychotherapy”

Module 1. Features in Time-Limited Psychotherapy

- 1.1. What Is Time-Limited Psychotherapy?
- 1.2. Background on Time-Limited Psychotherapy
- 1.3. Singular Relationship
- 1.4. A Single Therapist and a Single Patient
- 1.5. Mentor Therapist
- 1.6. The Basis of Interaction
- 1.7. Dealing with Relational Aspects
- 1.8. Subject Interaction with the World in the Here and Now
- 1.9. Careful Study of Multi-Level Communication between Therapists and Patients
- 1.10. Theoretical Basis
- 1.11. Regulatory Mechanisms
- 1.12. Basic Needs
- 1.13. Determinant
- 1.14. Communication
- 1.15. Intervention Scenario
- 1.16. Study of Micro, Meso and Macro Dynamics
- 1.17. Basic Assumptions

Module 2. Establishment of the Therapeutic Bond

- 2.1. Accompaniment
- 2.2. Containment
- 2.3. Escort
- 2.4. The Impossibility Not to Influence
- 2.5. Influencing Only the Problem
- 2.6. Not Influencing Personality Structure
- 2.7. Getting Patients to Influence Change
- 2.8. Influence Not So Much What Happens as What the Patient Does with What Happens to Them
- 2.9. Integrate Emotions and Affective Experiences within Current Reality
- 2.10. Focus on Solutions and Healthy Aspects in Subjects
- 2.11. Address the Cause for Consultation and for Basic Conflicts
- 2.12. Use the Cause for Consultation as a Guide for Therapy

Module 3. The Therapist's Role

- 3.1. Therapists as Referential Figures
- 3.2. Asymmetrical Relationships
- 3.3. Detecting Basic Conflicts
- 3.4. Mentor Therapist
- 3.5. Family Therapist
- 3.6. Interdisciplinary Interventions
- 3.7. Therapeutic Styles
- 3.8. Experience What Patients Have Experienced as Much as Possible
- 3.9. Commitment to Patients
- 3.10. Therapist Presence Even When Not Present: Therapist Introjection

Module 4. Role of Clinical Hypnosis in Time-Limited Psychotherapy

- 4.1. Clinical Hypnosis as an Exploratory Tool
- 4.2. Neurological Resemblance of Clinical Hypnosis and Trauma
- 4.3. Axes of Clinical Hypnosis in TLP
- 4.4. What Does it Feel Like to Be in a Hypnotic State?
- 4.5. Different Methods of Hypnotic Induction at the Present Time
- 4.6. Psycho-Educational Phase
- 4.7. Hypnotic Induction Phase with Classical Techniques
- 4.8. Complete Process with Ericksonian or Post Ericksonian Inductions
- 4.9. Complete Process with Induced Head Movements (M.C.I. © R. Aguado 2004-07)

Module 5. Contexts in the Development of Self-Concept

- 5.1. Microcontext
- 5.2. The Self, the You and the Other
- 5.3. Basic Reference Person
- 5.4. Vital Script that Sculpts our Destiny
- 5.5. Traumatic Emotional Memory
- 5.6. Self-Dialogue
- 5.7. Channels of Conflict Expression
- 5.8. Basic Desires
- 5.9. Basic Desire or Need for Attachment (Bowlby 1969), or Companionship (José Miguel Román 2004)
- 5.10. Containment
- 5.11. Delimitation
- 5.12. Endogenous Primary Basic Desires
- 5.13. Secondary Desires
- 5.14. Mesocontext
- 5.15. Macro Context

Module 6. Scientific and Neurobiological Principles of T.L.P.

- 6.1. Globalizing Model of Brain Functioning
- 6.2. Hemispheric Specialization
- 6.3. Hemispheric Lateralization in Hypnosis
- 6.4. More Cerebral Verticality than Horizontality
- 6.5. Rivers of Chemistry
- 6.6. Chemical Families and Interactions Between Them
- 6.7. Theory of the Etiology of Mental Health and Mental Illness
- 6.8. Health Model: Conscious Emotional Bonding
- 6.9. Illness Model: Time-Limited Psychotherapy

Module 7. Phases in the Intervention with T.L.P.

- 7.1. Introduction to Intervention with Time-Limited Psychotherapy
- 7.2. Discovering Suffering. Showing Compassion
- 7.3. Valuing Introspection
- 7.4. Reciprocal Admiration Phase
- 7.5. Meeting and Marking Phase
- 7.6. Unframing and Displacement Phase
- 7.7. Restoration and Resolution Phase
- 7.8. Therapeutic Turning Point Phase
- 7.9. Contemplation Phase
- 7.10. Interventions in Time-Limited Psychotherapy
- 7.11. Collecting T.L.P Information
- 7.12. Importance of Bonding in T.L.P.

Module 8. Universe of Intervention with T.L.P.

- 8.1. Simple Phobias
- 8.2. Agoraphobia
- 8.3. Panic Disorders
- 8.4. Generalized Anxiety Disorder
- 8.5. Obsessive Compulsive Disorder
- 8.6. Post-Traumatic Stress Disorder
- 8.7. Affective Disorders
- 8.8. Eating Disorders
- 8.9. Psychosomatic Disorders



This program will allow you to advance in your career comfortably"

07

Clinical Internship

Once the student has completed the theoretical part online, the program includes a period of practical training in a prestigious clinical center. During this period, the student will have a tutor who will accompany them at all times, from the preparation to the completion of the clinical internship.





“

This exclusive TECH program allows you to combine theory and practice in an avant-garde way”

This Psychology training program includes a three-week internship at a referral clinical center, where students will work with real patients alongside a team of renowned professionals. During these three weeks, students will have the opportunity to apply the most innovative diagnostic procedures and plan the most up-to-date therapy for each pathology. The days will be eight consecutive hours of practical training Monday through Friday, allowing students to gain valuable and meaningful experience in the real world of Clinical Psychology.

This practical period is designed to develop and refine the skills necessary to provide psychological care in areas and conditions that require a high level of qualification. All activities are geared towards specific training for practice in a safe environment for the patient and high professional performance. The training program is completely practical and aims to prepare students for psychological care in complex situations, ensuring the safety and well-being of the patient.

For all these reasons, this program offers a unique opportunity to learn alongside experts and with state-of-the-art technological resources. It is an innovative way to integrate the processes of Time-Limited Psychotherapy in a teaching environment ideal for the improvement of professional medical skills for the 21st century. Students will gain valuable experience in psychological care in real situations and will be prepared to face challenges in the field of clinical psychology in a safe and professional manner.

The practical part will be carried out with the active participation of the student performing the activities and procedures of each area of competence (learning to learn and learning to do), with the accompaniment and guidance of professors and other fellow trainees that facilitate teamwork and multidisciplinary integration as transversal competencies for the praxis of Clinical Psychology (learning to be and learning to relate).

The procedures described below will form the basis of the practical part of the training, and their realization is subject to both the suitability of the patients and the availability of the center and its workload, the proposed activities being the following:



Don't miss the opportunity to acquire exceptional skills in a state-of-the-art hospital that offers an innovative academic program, supported by a highly trained team. Enroll now and get ready to achieve your career goals!"



Module	Practical Activity
Application of Time-Limited Psychotherapy	Conduct individual psychotherapy sessions with a patient under the supervision of an experienced psychotherapist
	Design and plan of a TLP treatment plan for a specific clinical case
	Develop skills to set clear and achievable therapeutic goals in the TLP setting
	Learn techniques for managing resistance and non-adherence to treatment in patients receiving TLP
	Participate in clinical supervision sessions with an expert psychotherapist to discuss TLP cases
Use of Advanced Tools and Techniques in Time-Limited Psychotherapy	Train in advanced cognitive-behavioral techniques to treat specific disorders in the TLP setting
	Apply mindfulness and meditation techniques in TLP sessions
	Develop skills for working with patients presenting personality problems in the context of TLP
	Learn problem-solving and decision-making techniques in the TLP setting
	Use psychoeducation techniques to improve adherence to treatment in patients receiving TLP
Scientific and Neurobiological Principles of TLP	Discussion and analysis of recent scientific studies on the efficacy of TLP to treat different disorders
	Training in neuroimaging techniques to better understand the neurobiological mechanisms involved in TLP
	Critical analysis of the main theories underpinning TLP
	Learn neuropsychological assessment techniques to be applied to patients receiving TLP
	Training in psychophysiology techniques to assess the emotional state of patients undergoing TLP
Assessment of the Patient to Apply Time-Limited Psychotherapy	Learn psychological assessment techniques to identify the main symptoms and disorders present in TLP patients
	Development of skills to establish rapport with TLP patients
	Development of skills to establish rapport with TLP patients
	Use of personality assessment techniques to better understand the behavior and thinking patterns of patients receiving TLP
	Participation in clinical case discussion sessions to learn how to assess and diagnose TLP recipients

Civil Liability Insurance

This institution's main concern is to guarantee the safety of the trainees and other collaborating agents involved in the internship process at the company. Among the measures dedicated to achieve this is the response to any incident that may occur during the entire teaching-learning process.

To this end, this entity commits to purchasing a civil liability insurance policy to cover any eventuality that may arise during the course of the internship at the center.

This liability policy for interns will have broad coverage and will be taken out prior to the start of the Internship Program period. That way professionals will not have to worry in case of having to face an unexpected situation and will be covered until the end of the internship program at the center.



General Conditions of the Internship Program

The general terms and conditions of the internship agreement for the program are as follows:

1. TUTOR: During the Hybrid Professional Master's Degree, students will be assigned two tutors who will accompany them throughout the process, answering any doubts and questions that may arise. On the one hand, there will be a professional tutor belonging to the internship center who will have the purpose of guiding and supporting the student at all times. On the other hand, they will also be assigned an academic tutor whose mission will be to coordinate and help the students during the whole process, solving doubts and facilitating everything they may need. In this way, the student will be accompanied and will be able to discuss any doubts that may arise, both clinical and academic.

2. DURATION: The internship program will have a duration of three continuous weeks, in 8-hour days, 5 days a week. The days of attendance and the schedule will be the responsibility of the center and the professional will be informed well in advance so that they can make the appropriate arrangements.

3. ABSENCE: If the student does not show up on the start date of the Hybrid Professional Master's Degree, they will lose the right to it, without the possibility of reimbursement or change of dates. Absence for more than two days from the internship, without justification or a medical reason, will result in the professional's withdrawal from the internship, therefore, automatic termination of the internship. Any problems that may arise during the course of the internship must be urgently reported to the academic tutor.

4. CERTIFICATION: Professionals who pass the Hybrid Professional Master's Degree will receive a certificate accrediting their stay at the center.

5. EMPLOYMENT RELATIONSHIP: the Hybrid Professional Master's Degree shall not constitute an employment relationship of any kind.

6. PRIOR EDUCATION: Some centers may require a certificate of prior education for the Hybrid Professional Master's Degree. In these cases, it will be necessary to submit it to the TECH internship department so that the assignment of the chosen center can be confirmed.

7. DOES NOT INCLUDE: The Hybrid Professional Master's Degree will not include any element not described in the present conditions. Therefore, it does not include accommodation, transportation to the city where the internship takes place, visas or any other items not listed

However, students may consult with their academic tutor for any questions or recommendations in this regard. The academic tutor will provide the student with all the necessary information to facilitate the procedures in any case.

08

Where Can I Do the Clinical Internship?

The Hybrid Professional Master's Degree curriculum includes a practical placement in a recognized hospital center, where students will be able to apply their knowledge of Time-Limited Psychotherapy. In order to make this degree more accessible to a wider public, TECH offers the possibility of studying it in different locations around the globe. In this way, this institution reaffirms its commitment to excellence and accessible education for all.



“

Complete your theoretical education with the best practical internship in the market. Only in this way will you achieve success in your daily practice”



The student will be able to complete the practical part of this Hybrid Professional Master's Degree at the following centers:



Psychology

Hospital HM Modelo

Country	City
Spain	La Coruña

Address: Rúa Virrey Osorio, 30, 15011, A Coruña

Network of private clinics, hospitals and specialized centers distributed throughout Spain.

Related internship programs:

- Anaesthesiology and Resuscitation
- Spine Surgery



Psychology

Hospital HM Rosaleda

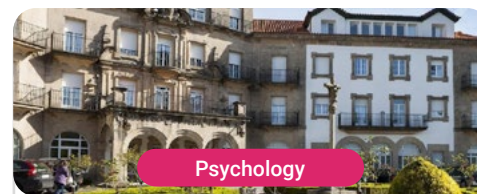
Country	City
Spain	La Coruña

Address: Rúa de Santiago León de Caracas, 1, 15701, Santiago de Compostela, A Coruña

Network of private clinics, hospitals and specialized centers distributed throughout Spain.

Related internship programs:

- Hair Transplantation
- Orthodontics and Dentofacial Orthopedics



Psychology

Hospital HM La Esperanza

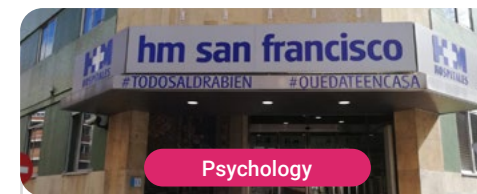
Country	City
Spain	La Coruña

Address: Av. das Burgas, 2, 15705, Santiago de Compostela, A Coruña

Network of private clinics, hospitals and specialized centers distributed throughout Spain.

Related internship programs:

- Oncology Nursing
- Clinical Ophthalmology



Psychology

Hospital HM San Francisco

Country	City
Spain	León

Address: C. Marqueses de San Isidro, 11, 24004, León

Network of private clinics, hospitals and specialized centers distributed throughout Spain.

Related internship programs:

- Update in Anesthesiology and Resuscitation
- Nursing in the Traumatology Department



Psychology

Hospital HM Regla

Country	City
Spain	León

Address: Calle Cardenal Landázuri, 2, 24003, León

Network of private clinics, hospitals and specialized centers distributed throughout Spain.

Related internship programs:

- Psychiatric Treatments Update in Minor Patients



Psychology

Hospital HM Montepíncipe

Country	City
Spain	Madrid

Address: Av. de Montepíncipe, 25, 28660, Boadilla del Monte, Madrid

Network of private clinics, hospitals and specialized centers distributed throughout Spain.

Related internship programs:

- Child Orthopedics
- Aesthetic Medicine



Psychology

Hospital HM Torrelodones

Country	City
Spain	Madrid

Address: Av. Castillo Olivares, s/n, 28250, Torrelodones, Madrid

Network of private clinics, hospitals and specialized centers distributed throughout Spain.

Related internship programs:

- Anaesthesiology and Resuscitation
- Hospital Pediatrics



Psychology

Hospital HM Sanchinarro

Country	City
Spain	Madrid

Address: Calle de Oña, 10, 28050, Madrid

Network of private clinics, hospitals and specialized centers distributed throughout Spain.

Related internship programs:

- Anaesthesiology and Resuscitation
- Sleep Medicine



Psychology

Policlínico HM Gabinete Velázquez

Country	City
Spain	Madrid

Address: C. de Jorge Juan, 19, 1º 28001, 28001, Madrid

Network of private clinics, hospitals and specialized centers distributed throughout Spain.

Related internship programs:

- Clinical Nutrition in Medicine
- Aesthetic Plastic Surgery



Psychology

Policlínico HM La Paloma

Country	City
Spain	Madrid

Address: Calle Hilados, 9, 28850, Torrejón de Ardoz, Madrid

Network of private clinics, hospitals and specialized centers distributed throughout Spain.

Related internship programs:

- Advanced Operating Room Nursing
- Orthodontics and Dentofacial Orthopedics



Psychology

Policlínico HM Moraleja

Country	City
Spain	Madrid

Address: P.º de Alcobendas, 10, 28109, Alcobendas, Madrid

Network of private clinics, hospitals and specialized centers distributed throughout Spain.

Related internship programs:

- Rehabilitation Medicine in Acquired Brain Injury Management



Psychology

Policlínico HM Sanchinarro

Country	City
Spain	Madrid

Address: Av. de Manoteras, 10, 28050, Madrid

Network of private clinics, hospitals and specialized centers distributed throughout Spain.

Related internship programs:

- Gynecological Care for Midwives
- Nursing in the Digestive Tract Department



Psychology

Policlínico HM Virgen del Val

Country	City
Spain	Madrid

Address: Calle de Zaragoza, 6, 28804, Alcalá de Henares, Madrid

Network of private clinics, hospitals and specialized centers distributed throughout Spain.

Related internship programs:

- Diagnosis in Physiotherapy
- Physiotherapy in Early Care



Psychology

Policlínico HM Rosaleda Lalín

Country	City
Spain	Pontevedra

Address: Av. Buenos Aires, 102, 36500, Lalín, Pontevedra

Network of private clinics, hospitals and specialized centers distributed throughout Spain.

Related internship programs:

- Advances in Hematology and Hemotherapy
- Neurological Physiotherapy



Psychology

Policlínico HM Imi Toledo

Country	City
Spain	Toledo

Address: Av. de Irlanda, 21, 45005, Toledo

Network of private clinics, hospitals and specialized centers distributed throughout Spain.

Related internship programs:

- Electrotherapy in Rehabilitation Medicine
- Hair Transplantation

09

Study Methodology

TECH is the world's first university to combine the **case study** methodology with **Relearning**, a 100% online learning system based on guided repetition.

This disruptive pedagogical strategy has been conceived to offer professionals the opportunity to update their knowledge and develop their skills in an intensive and rigorous way. A learning model that places students at the center of the educational process giving them the leading role, adapting to their needs and leaving aside more conventional methodologies.



“

TECH will prepare you to face new challenges in uncertain environments and achieve success in your career”

The student: the priority of all TECH programs

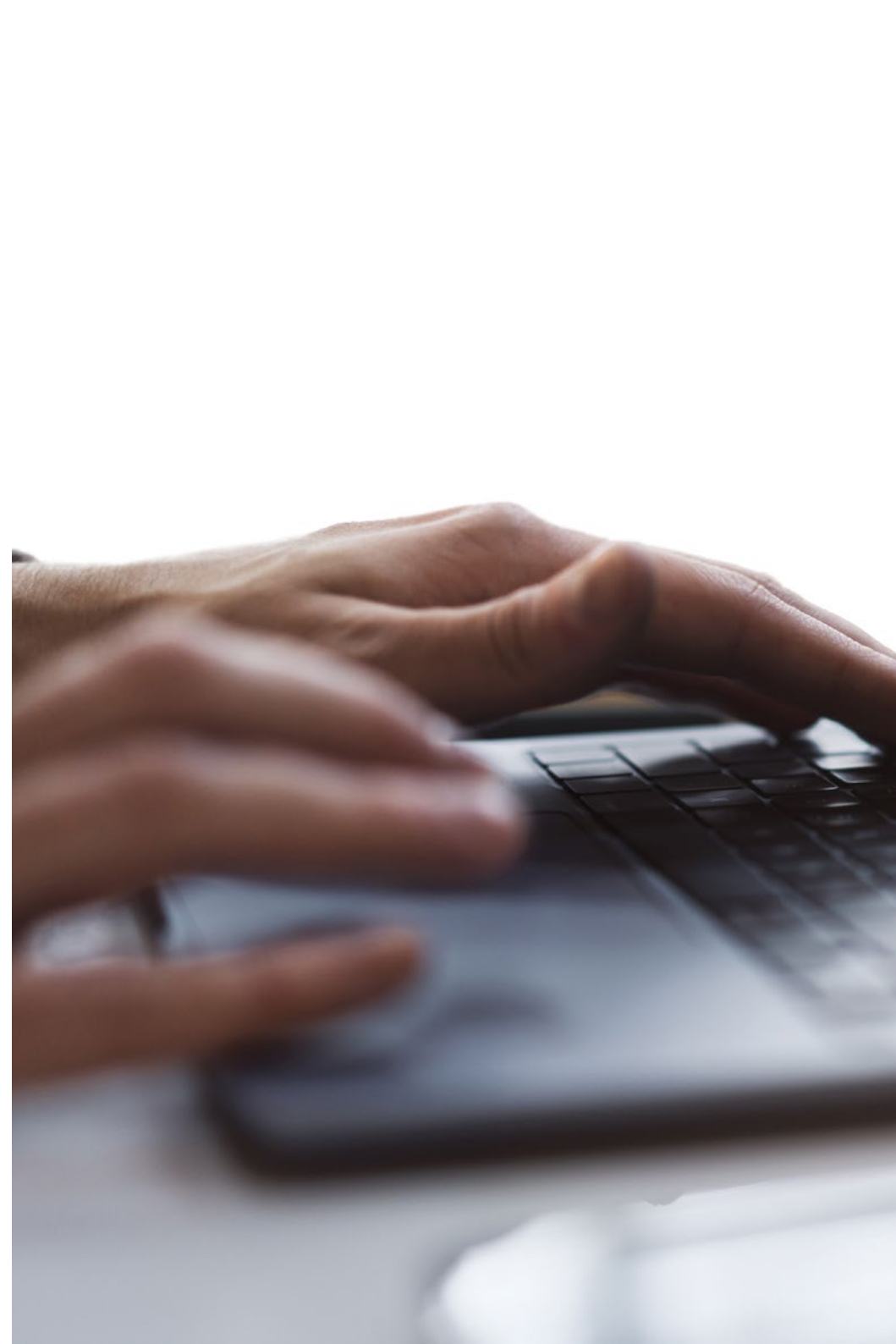
In TECH's study methodology, the student is the main protagonist.

The teaching tools of each program have been selected taking into account the demands of time, availability and academic rigor that, today, not only students demand but also the most competitive positions in the market.

With TECH's asynchronous educational model, it is students who choose the time they dedicate to study, how they decide to establish their routines, and all this from the comfort of the electronic device of their choice. The student will not have to participate in live classes, which in many cases they will not be able to attend. The learning activities will be done when it is convenient for them. They can always decide when and from where they want to study.

“

*At TECH you will NOT have live classes
(which you might not be able to attend)”*



The most comprehensive study plans at the international level

TECH is distinguished by offering the most complete academic itineraries on the university scene. This comprehensiveness is achieved through the creation of syllabi that not only cover the essential knowledge, but also the most recent innovations in each area.

By being constantly up to date, these programs allow students to keep up with market changes and acquire the skills most valued by employers. In this way, those who complete their studies at TECH receive a comprehensive education that provides them with a notable competitive advantage to further their careers.

And what's more, they will be able to do so from any device, pc, tablet or smartphone.

“*TECH's model is asynchronous, so it allows you to study with your pc, tablet or your smartphone wherever you want, whenever you want and for as long as you want*”

Case Studies and Case Method

The case method has been the learning system most used by the world's best business schools. Developed in 1912 so that law students would not only learn the law based on theoretical content, its function was also to present them with real complex situations. In this way, they could make informed decisions and value judgments about how to resolve them. In 1924, Harvard adopted it as a standard teaching method.

With this teaching model, it is students themselves who build their professional competence through strategies such as Learning by Doing or Design Thinking, used by other renowned institutions such as Yale or Stanford.

This action-oriented method will be applied throughout the entire academic itinerary that the student undertakes with TECH. Students will be confronted with multiple real-life situations and will have to integrate knowledge, research, discuss and defend their ideas and decisions. All this with the premise of answering the question of how they would act when facing specific events of complexity in their daily work.



Relearning Methodology

At TECH, case studies are enhanced with the best 100% online teaching method: Relearning.

This method breaks with traditional teaching techniques to put the student at the center of the equation, providing the best content in different formats. In this way, it manages to review and reiterate the key concepts of each subject and learn to apply them in a real context.

In the same line, and according to multiple scientific researches, reiteration is the best way to learn. For this reason, TECH offers between 8 and 16 repetitions of each key concept within the same lesson, presented in a different way, with the objective of ensuring that the knowledge is completely consolidated during the study process.

Relearning will allow you to learn with less effort and better performance, involving you more in your specialization, developing a critical mindset, defending arguments, and contrasting opinions: a direct equation to success.



A 100% online Virtual Campus with the best teaching resources

In order to apply its methodology effectively, TECH focuses on providing graduates with teaching materials in different formats: texts, interactive videos, illustrations and knowledge maps, among others. All of them are designed by qualified teachers who focus their work on combining real cases with the resolution of complex situations through simulation, the study of contexts applied to each professional career and learning based on repetition, through audios, presentations, animations, images, etc.

The latest scientific evidence in the field of Neuroscience points to the importance of taking into account the place and context where the content is accessed before starting a new learning process. Being able to adjust these variables in a personalized way helps people to remember and store knowledge in the hippocampus to retain it in the long term. This is a model called Neurocognitive context-dependent e-learning that is consciously applied in this university qualification.

In order to facilitate tutor-student contact as much as possible, you will have a wide range of communication possibilities, both in real time and delayed (internal messaging, telephone answering service, email contact with the technical secretary, chat and videoconferences).

Likewise, this very complete Virtual Campus will allow TECH students to organize their study schedules according to their personal availability or work obligations. In this way, they will have global control of the academic content and teaching tools, based on their fast-paced professional update.



The online study mode of this program will allow you to organize your time and learning pace, adapting it to your schedule”

The effectiveness of the method is justified by four fundamental achievements:

1. Students who follow this method not only achieve the assimilation of concepts, but also a development of their mental capacity, through exercises that assess real situations and the application of knowledge.
2. Learning is solidly translated into practical skills that allow the student to better integrate into the real world.
3. Ideas and concepts are understood more efficiently, given that the example situations are based on real-life.
4. Students like to feel that the effort they put into their studies is worthwhile. This then translates into a greater interest in learning and more time dedicated to working on the course.

The university methodology top-rated by its students

The results of this innovative teaching model can be seen in the overall satisfaction levels of TECH graduates.

The students' assessment of the quality of teaching, quality of materials, course structure and objectives is excellent. Not surprisingly, the institution became the best rated university by its students on the Trustpilot review platform, obtaining a 4.9 out of 5.

Access the study contents from any device with an Internet connection (computer, tablet, smartphone) thanks to the fact that TECH is at the forefront of technology and teaching.

You will be able to learn with the advantages that come with having access to simulated learning environments and the learning by observation approach, that is, Learning from an expert.



As such, the best educational materials, thoroughly prepared, will be available in this program:



Study Material

All teaching material is produced by the specialists who teach the course, specifically for the course, so that the teaching content is highly specific and precise.

This content is then adapted in an audiovisual format that will create our way of working online, with the latest techniques that allow us to offer you high quality in all of the material that we provide you with.



Practicing Skills and Abilities

You will carry out activities to develop specific competencies and skills in each thematic field. Exercises and activities to acquire and develop the skills and abilities that a specialist needs to develop within the framework of the globalization we live in.



Interactive Summaries

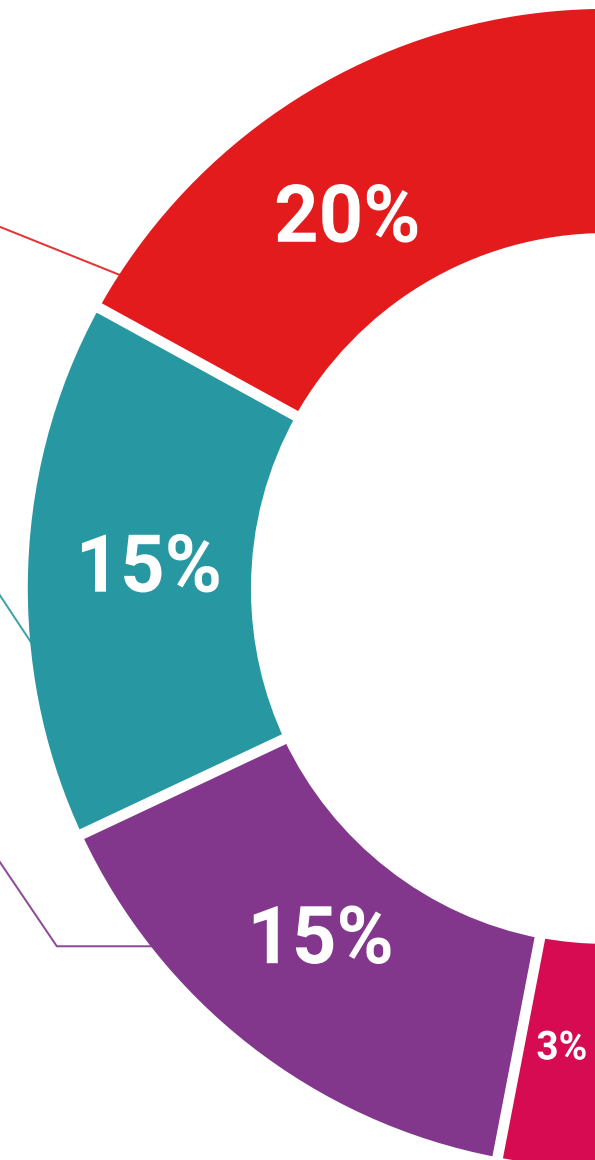
We present the contents attractively and dynamically in multimedia lessons that include audio, videos, images, diagrams, and concept maps in order to reinforce knowledge.

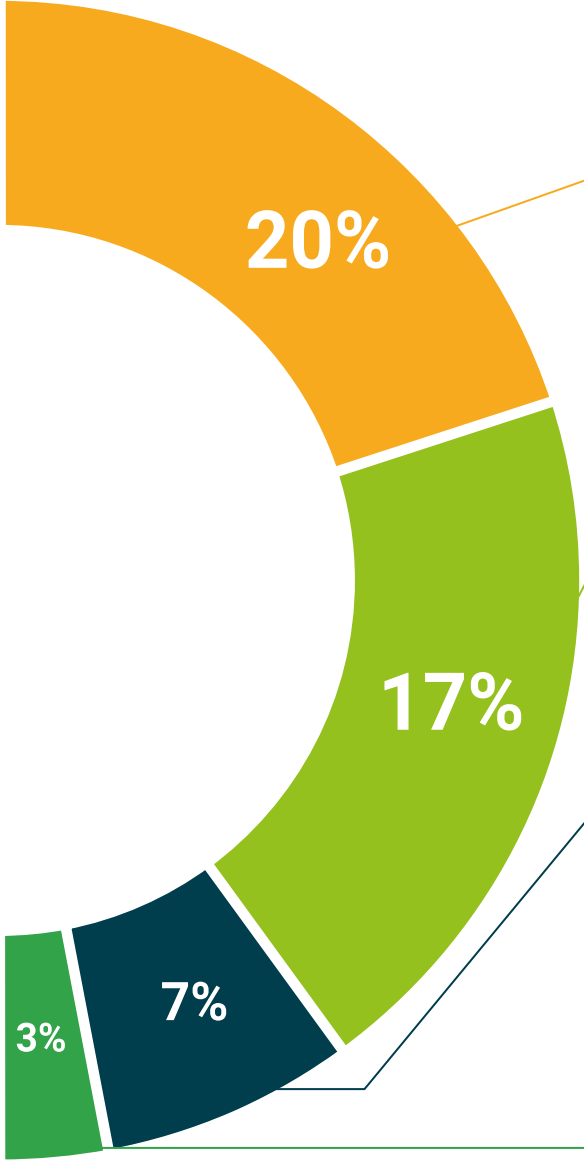
This exclusive educational system for presenting multimedia content was awarded by Microsoft as a "European Success Story".



Additional Reading

Recent articles, consensus documents, international guides... In our virtual library you will have access to everything you need to complete your education.





Case Studies

Students will complete a selection of the best case studies in the field. Cases that are presented, analyzed, and supervised by the best specialists in the world.



Testing & Retesting

We periodically assess and re-assess your knowledge throughout the program. We do this on 3 of the 4 levels of Miller's Pyramid.



Classes

There is scientific evidence suggesting that observing third-party experts can be useful.
Learning from an expert strengthens knowledge and memory, and generates confidence for future difficult decisions.



Quick Action Guides

TECH offers the most relevant contents of the course in the form of worksheets or quick action guides. A synthetic, practical and effective way to help students progress in their learning.



10

Certificate

The Hybrid Professional Master's Degree in Time-Limited Psychotherapy guarantees students, in addition to the most rigorous and up-to-date education, access to a Hybrid Professional Master's Degree issued by TECH Global University.



“

*Successfully complete this program
and receive your university qualification
without having to travel or fill out
laborious paperwork”*

This private qualification will allow you to obtain a **Hybrid Professional Master's Degree diploma in Time-Limited Psychotherapy** endorsed by **TECH Global University**, the world's largest online university.

TECH Global University, is an official European University publicly recognized by the Government of Andorra ([official bulletin](#)). Andorra is part of the European Higher Education Area (EHEA) since 2003. The EHEA is an initiative promoted by the European Union that aims to organize the international training framework and harmonize the higher education systems of the member countries of this space. The project promotes common values, the implementation of collaborative tools and strengthening its quality assurance mechanisms to enhance collaboration and mobility among students, researchers and academics.

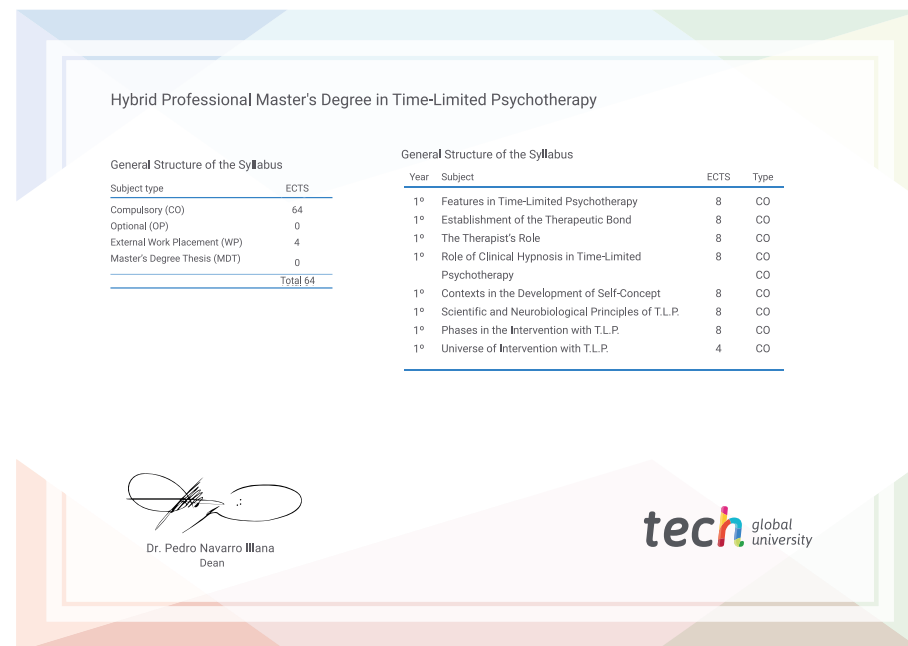
This **TECH Global University** private qualification, is a European program of continuing education and professional updating that guarantees the acquisition of competencies in its area of knowledge, providing a high curricular value to the student who completes the program.

Title: **Hybrid Professional Master's Degree in Time-Limited Psychotherapy**

Modality: **Hybrid (Online + Clinical Internship)**

Duration: **12 months**

Accreditation: **60 + 4 ECTS**



*Apostille Convention. In the event that the student wishes to have their paper diploma issued with an apostille, TECH Global University will make the necessary arrangements to obtain it, at an additional cost.



Hybrid Professional Master's Degree

Time-Limited Psychotherapy

Modality: Hybrid (Online + Clinical Internship)

Duration: 12 months

Certificate: TECH Global University

Accreditation: 60 + 4 ECTS

Hybrid Professional Master's Degree Time-Limited Psychotherapy

