

Postgraduate Certificate

Therapeutic Relationship with the Child,
Evaluation and Diagnostic Process in
Child and Adolescent Psychopathology



Postgraduate Certificate

Therapeutic Relationship with the Child, Evaluation and Diagnostic Process in Child and Adolescent Psychopathology

- » Modality: online
- » Duration: 6 weeks
- » Certificate: TECH Global University
- » Credits: 6 ECTS
- » Schedule: at your own pace
- » Exams: online

Website: www.techtute.com/us/psychology/postgraduate-certificate/therapeutic-relationship-child-evaluation-diagnostic-process-child-adolescent-psychopathology



Index

01

Introduction

p. 4

02

Objectives

p. 8

03

Course Management

p. 12

04

Structure and Content

p. 16

05

Methodology

p. 20

06

Certificate

p. 28

01

Introduction

Mental health problems affect all areas of children's lives, their early diagnosis and intervention are essential to improve the prognosis. In this process, the therapeutic relationship with the child is key to its proper development, as well as the involvement of the family during therapy. In this program, taught 100% online, the psychology professional will find the most advanced and scientifically based knowledge in the field of evaluation and diagnosis, thanks to the multimedia didactic material provided by the specialized teaching team that conforms this degree.



“

*With this Postgraduate Certificate you
will obtain the most advanced knowledge
in infant diagnostics in only 6 weeks”*

This 6-week Postgraduate Certificate delves into the Therapeutic Relationship with the Child, emphasizing the process of evaluation and diagnosis in child and adolescent psychopathology. An intensive knowledge in charge of specialized professionals, who will pour in this teaching all their knowledge with the final objective of providing an actualized knowledge to the students.

This way, the psychology professionals who take this university degree will be able to be aware of the recent studies that address the different techniques and skills of every therapist in the relationship with the child, always thinking about the success of the therapy itself in this infantile and juvenile stage. Likewise, this program will allow students to renew their knowledge about evaluation tools, the areas that should be taken into account at this stage, as well as the framing of the family system in psychological therapy.

The syllabus with a theoretical-practical approach will allow through innovative didactic material to provide information on recent advances in this area of psychology, at the same time that it will allow the clinical practice of clinical case simulations shown in this degree to be put into practice.

A Postgraduate Certificate that also allows the psychology professional to access the entire syllabus in a comfortable way, whenever and wherever they wish to do so. You only need an electronic device with internet connection to access the entire syllabus, without attendance or fixed schedules. A flexible program, ideal for students who wish to combine their work and/or personal responsibilities with an education that is at the forefront of the academic world.

This **Postgraduate Certificate in Therapeutic Relationship with the Child, Evaluation and Diagnostic Process in Child and Adolescent Psychopathology** contains the most complete and up-to-date program on the market. The most important features include:

- ♦ Practical cases presented by experts in Psychology
- ♦ The graphic, schematic, and practical contents with which they are created, provide scientific and practical information on the disciplines that are essential for professional practice
- ♦ Practical exercises where the self-assessment process can be carried out to improve learning
- ♦ Its special emphasis on innovative methodologies
- ♦ Theoretical lessons, questions to the expert, debate forums on controversial topics, and individual reflection assignments
- ♦ Content that is accessible from any fixed or portable device with an Internet connection



*A Postgraduate Certificate
with practical clinical cases of
great utility in the therapeutic
relationship with the infant"*

“

An academic program where you will be able to deepen in the evaluation process and clinical diagnosis used with patients in the infantile and juvenile stage”

Download the content of this Postgraduate Certificate and access it whenever you need it.

Access from any electronic device to the most innovative syllabus and the most recent scientific studies on diagnosis in Juvenile Psychopathology.

The program's teaching staff includes professionals from sector who contribute their work experience to this educational program, as well as renowned specialists from leading societies and prestigious universities.

Its multimedia content, developed with the latest educational technology, will provide the professional with situated and contextual learning, i.e., a simulated environment that will provide an immersion education programmed to learn in real situations.

The design of this program focuses on Problem-Based Learning, by means of which the professional must try to solve the different professional practice situations that are presented throughout the academic course. For this purpose students will be assisted by an innovative interactive video system developed by renowned experts.



02 Objectives

This Postgraduate Certificate provides the psychology professionals with an advanced and renewed knowledge in the field of the therapeutic relationship with the infant. For this purpose, you will have multimedia content based on video summaries, complementary readings and real case studies that will lead to the development of a broad knowledge within the framework of evaluation and diagnosis in the stage of childhood and adolescence. The faculty that teaches this degree will be in charge of guiding the students to achieve their goals.



“

Reach your knowledge development goals with a flexible university education that you can access 24 hours a day”



General Objectives

- ♦ Describe the therapeutic bond between the psychotherapist and the child
- ♦ Analyze the changes in behavior during the life cycle
- ♦ Differentiate between the evolutionary adaptation and adaptability of human beings
- ♦ Explain the framing of the family system in a single-therapist, single-patient psychotherapy
- ♦ Master psychodiagnosis and evaluation in the child and adolescent framework
- ♦ Control personality assessment at these ages
- ♦ Identify the role of the family in child and adolescent diagnosis
- ♦ Specify the intervention in clinical psychology at these age groups
- ♦ Develop sufficient skills to manage a child and adolescent clinic





Specific Objectives

- ♦ Know the process of the therapeutic relationship with the infant and adolescent in clinical child and adolescent psychology, and know the most appropriate forms of communication for successful therapy in early stages
- ♦ Identify the assessment and clinical diagnosis process used with patients in the child and adolescent stage
- ♦ Study the evaluation instruments and the areas of importance that should be evaluated in the early stages
- ♦ Study how the family is involved in therapy with minors



A Postgraduate Certificate that will allow you to be aware of the most common communication and language techniques for the success of psychological therapy with the infant"

03

Course Management

This academic program includes the most specialized teaching staff in the current educational market. They are specialists selected by TECH to develop the whole syllabus. In this way, starting from their own existence and the latest evidence, they have designed the most up-to-date content that provides a guarantee of quality in such a relevant subject.



“

*TECH offers the most specialized
teaching staff in the field of study.
Enroll now and enjoy the quality
you deserve”*

International Guest Director

Dr. Amy Elizabeth West is a renowned clinical psychologist with an outstanding international career in the field of Child and Adolescent Mental Health. She has held a leadership position at Children's Hospital Los Angeles (CHLA), where she has directed the Clinical Child and Adolescent Psychology Internship. Here, her work has focused on providing evidence-based psychosocial treatments, with a special focus on vulnerable and underserved populations, such as ethnic minorities and socioeconomically disadvantaged families.

Likewise, throughout her career, she has led innovative research on Mood and Anxiety Disorders in children, the prevention of Suicidal Behavior and Perinatal Mental Health, obtaining funding from prestigious institutions, such as the National Institute of Mental Health (NIMH), the Patient-Centered Outcomes Research Institute (PCORI) and the Substance Abuse and Mental Health Services Administration (SAMHSA).

Likewise, her integrative approach has been instrumental in developing treatments such as Child and Family Focused Cognitive Behavioral Therapy (CFF-CBT), known as RAINBOW therapy, which has been widely validated as an effective treatment for Pediatric Bipolar Disorder, with manuals published by Oxford University Press in the "Treatments that Work" series. She has also been involved in research on Substance and Opioid Use Prevention in Native American and Alaska Native communities.

In addition to her work and research, Dr. Amy Elizabeth West has been an active personality in several professional organizations, holding leadership roles in the Association for Cognitive and Behavioral Therapy, the Society for Prevention Research, and the Anxiety and Depression Association of America. In doing so, she aims to improve access to mental health care for vulnerable populations, establishing herself as an expert in her field.



Dr. Bolton, West, Amy Elizabeth

- Director of Clinical Child and Pediatric Psychology, Children's Hospital Los Angeles, United States
- Co-investigator and Director of the Implementation of Cognitive-Behavioral Techniques
- Psychologist and Researcher of the Community Mental Health Program at Children's Hospital of Los Angeles
- Member of the Study on Prevention and Treatment of Opioid and Substance Use in Urban and Rural AIAN Tribal Communities in California at the University of Southern California
- Associate Editor of the Journal of Clinical Child and Adolescent Psychology
- Adolescent Medicine Fellow at Harvard Medical School and Boston Children's Hospital
- Clinical and Pediatric Child Psychology Fellow, Harvard Medical School and Boston Children's Hospital
- Ph.D. in Clinical Psychology from the University of Virginia
- B.A. in Psychology from Stanford University
- Clinical Research Loan Repayment Program Award from the National Institutes of Health (NIH)
- Career Development Award from the National Institute of Mental Health (NIMH)
- Member of:
 - University of Southern California Interdisciplinary Center for Family Change

“

Thanks to TECH, you will be able to learn with the best professionals in the world”

04

Structure and Content

The psychology professionals who take this Postgraduate Certificate will have access to a syllabus that has been prepared by specialists in psychology and in the approach to child and adolescent psychopathology. Through the Relearningsystem, based on the reiteration of content, students will delve in a more natural and progressive way in the therapeutic relationship with the child and adolescent, the importance of the family figure, as well as the different techniques and tools used for the evaluation and diagnosis of the patient. Students will also be provided with complementary material that will allow them to extend the syllabus.



“

A university education that will allow you to renew your knowledge of the most frequent errors in the diagnosis of children and adolescents”

Module 1. Therapeutic relationship with the infant, process of evolution and diagnosis in child and adolescent psychopathology

- 1.1. Therapeutic Relationship with Children and Adolescents
 - 1.1.1. Infant and Adolescent Characteristics
 - 1.1.2. Establishment of a Therapeutic Alliance with the Minor
 - 1.1.3. Keys in the Therapeutic Relationship
- 1.2. Communication and Language Techniques in the Therapeutic Relationship in Childhood and Adolescence
 - 1.2.1. Importance of Communication and Language Techniques in the Therapeutic Relationship with the Minor
 - 1.2.2. Most Common Communication and Speech Techniques for Successful Psychological Therapy with the Infant
 - 1.2.3. Communication Difficulties in Therapy
- 1.3. Clinical Assessment and Diagnosis Process in Childhood: Phases
 - 1.3.1. The Clinical Assessment Process in the Childhood and Adolescence Stage
 - 1.3.2. Clinical Diagnosis in Childhood and Adolescence
 - 1.3.3. Keys to an Accurate Diagnosis
- 1.4. Areas of Psychological Functioning to be Assessed
 - 1.4.1. Main Areas of Psychological Functioning to be Assessed in the Child and Adolescent Stage
 - 1.4.2. Other Areas of Functioning to be Considered by the Therapist
- 1.5. Diagnostic Objectives
 - 1.5.1. Keys to an Accurate Diagnosis
 - 1.5.2. Main Objectives in the Diagnosis of the Most Common Psychopathologies in Childhood and Adolescence
- 1.6. The Assessment and Diagnostic Process: Means for Assessment and Diagnosis
 - 1.6.1. Interview
 - 1.6.2. Main Instruments Used in the Diagnosis of Psychopathologies in Childhood and Adolescence



- 1.7. Evolution of Assessment and Diagnostic Instruments
 - 1.7.1. Introduction to the Most Common Assessment and Diagnostic Instruments
 - 1.7.2. New Lines of Assessment and Diagnosis
- 1.8. Errors in Diagnosis in the Childhood and Adolescence Stage
 - 1.8.1. When Can Errors in Diagnosis Occur?
 - 1.8.2. Modulating Factors
 - 1.8.3. Most common mistakes
- 1.9. Framing of the Family System in Psychological Therapy
 - 1.9.1. Concept of Family System
 - 1.9.2. The Family System in Psychological Therapy
 - 1.9.3. Problems Related to Family Involvement in the Minor's Therapy
- 1.10. Family Evaluation
 - 1.10.1. Family Therapy vs. Individual Therapy
 - 1.10.2. Key Aspects for Family Assessment
 - 1.10.3. Measuring Instruments in Family Assessment



This Postgraduate Certificate will allow you to delve into the most recent instruments used in family assessment"

05

Methodology

This academic program offers students a different way of learning. Our methodology uses a cyclical learning approach: **Relearning**.

This teaching system is used, for example, in the most prestigious medical schools in the world, and major publications such as the **New England Journal of Medicine** have considered it to be one of the most effective.



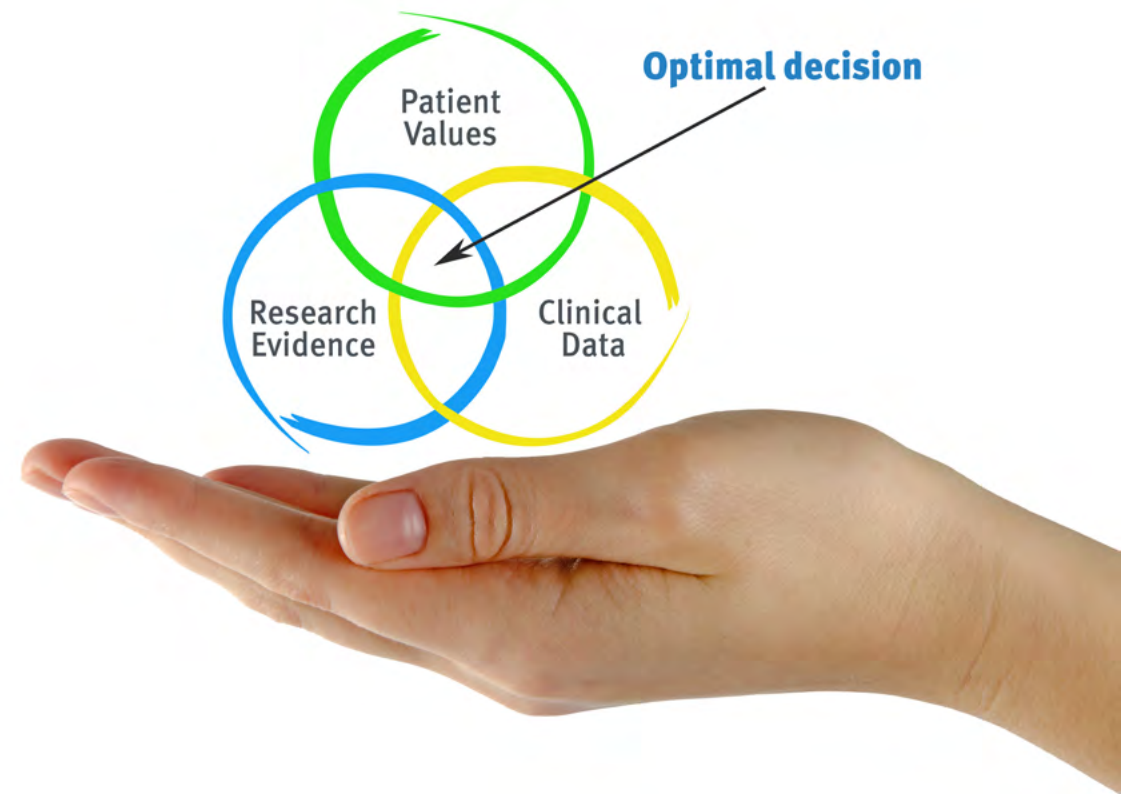
“

Discover Relearning, a system that abandons conventional linear learning, to take you through cyclical teaching systems: a way of learning that has proven to be extremely effective, especially in subjects that require memorization”

At TECH we use the Case Method

What should a professional do in a given situation? Throughout the program, students will face multiple simulated clinical cases, based on real patients, in which they will have to do research, establish hypotheses, and ultimately resolve the situation. There is an abundance of scientific evidence on the effectiveness of the method. Specialists learn better, faster, and more sustainably over time.

With TECH the psychologist experiences a way of learning that is shaking the foundations of traditional universities around the world.



According to Dr. Gervas, the clinical case is the annotated presentation of a patient, or group of patients, which becomes a “case”, an example or model that illustrates some peculiar clinical component, either because of its teaching power or because of its uniqueness or rarity. It is essential that the case is based on current professional life, trying to recreate the real conditions in the psychologist's professional practice.

“

Did you know that this method was developed in 1912, at Harvard, for law students? The case method consisted of presenting students with real-life, complex situations for them to make decisions and justify their decisions on how to solve them. In 1924, Harvard adopted it as a standard teaching method”

The effectiveness of the method is justified by four fundamental achievements:

1. Psychologists who follow this method not only master the assimilation of concepts, but also develop their mental capacity by means of exercises to evaluate real situations and apply their knowledge.
2. Learning is solidly translated into practical skills that allow the psychologist to better integrate knowledge into clinical practice.
3. Ideas and concepts are understood more efficiently, given that the example situations are based on real-life.
4. Students like to feel that the effort they put into their studies is worthwhile. This then translates into a greater interest in learning and more time dedicated to working on the course.



Relearning Methodology

At TECH we enhance the case method with the best 100% online teaching methodology available: Relearning.

Our university is the first in the world to combine the study of clinical cases with a 100% online learning system based on repetition, combining a minimum of 8 different elements in each lesson, which is a real revolution compared to the simple study and analysis of cases.

The psychologist will learn through real cases and by solving complex situations in simulated learning environments. These simulations are developed using state-of-the-art software to facilitate immersive learning.



At the forefront of world teaching, the Relearning method has managed to improve the overall satisfaction levels of professionals who complete their studies, with respect to the quality indicators of the best online university (Columbia University).

This methodology has trained more than 150,000 psychologists with unprecedented success in all clinical specialties. Our pedagogical methodology is developed in a highly competitive environment, with a university student body with a strong socioeconomic profile and an average age of 43.5 years old.

*Relearning will allow you to learn with less effort
and better performance, involving you more
in your training, developing a critical mindset,
defending arguments, and contrasting opinions: a
direct equation for success.*

In our program, learning is not a linear process, but rather a spiral (learn, unlearn, forget, and re-learn). Therefore, we combine each of these elements concentrically.

The overall score obtained by our learning system is 8.01, according to the highest international standards.



This program offers the best educational material, prepared with professionals in mind:



Study Material

All teaching material is produced by the specialists who teach the course, specifically for the course, so that the teaching content is highly specific and precise.

These contents are then applied to the audiovisual format, to create the TECH online working method. All this, with the latest techniques that offer high quality pieces in each and every one of the materials that are made available to the student.



Latest Techniques and Procedures on Video

TECH introduces students to the latest techniques, to the latest educational advances, to the forefront of current psychology. All of this in direct contact with students and explained in detail so as to aid their assimilation and understanding. And best of all, you can watch the videos as many times as you like.



Interactive Summaries

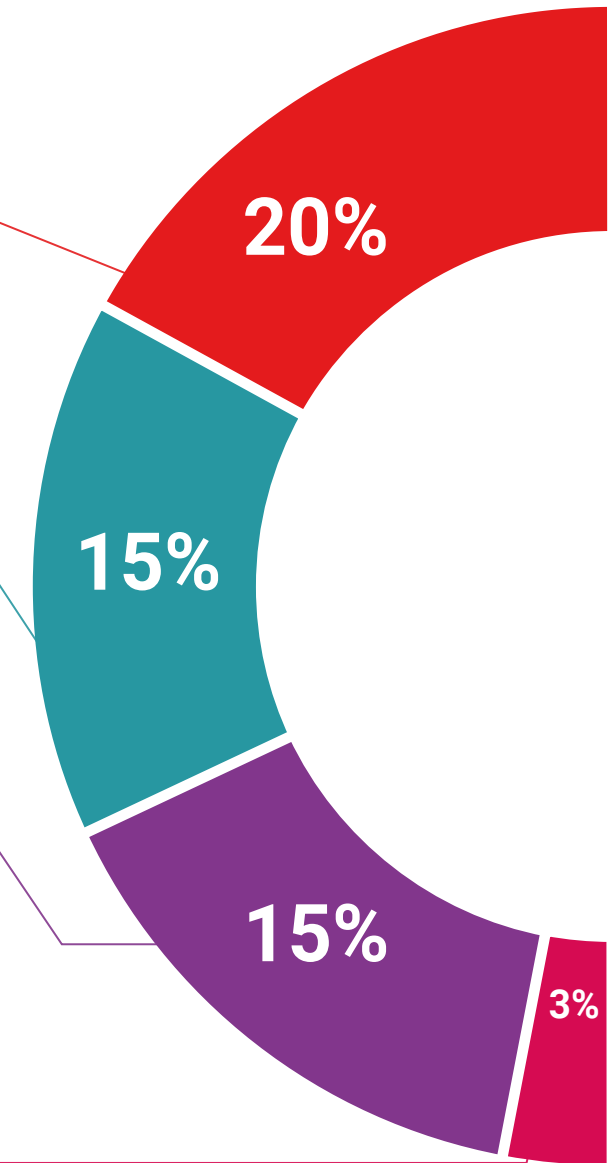
The TECH team presents the contents attractively and dynamically in multimedia lessons that include audio, videos, images, diagrams, and concept maps in order to reinforce knowledge.

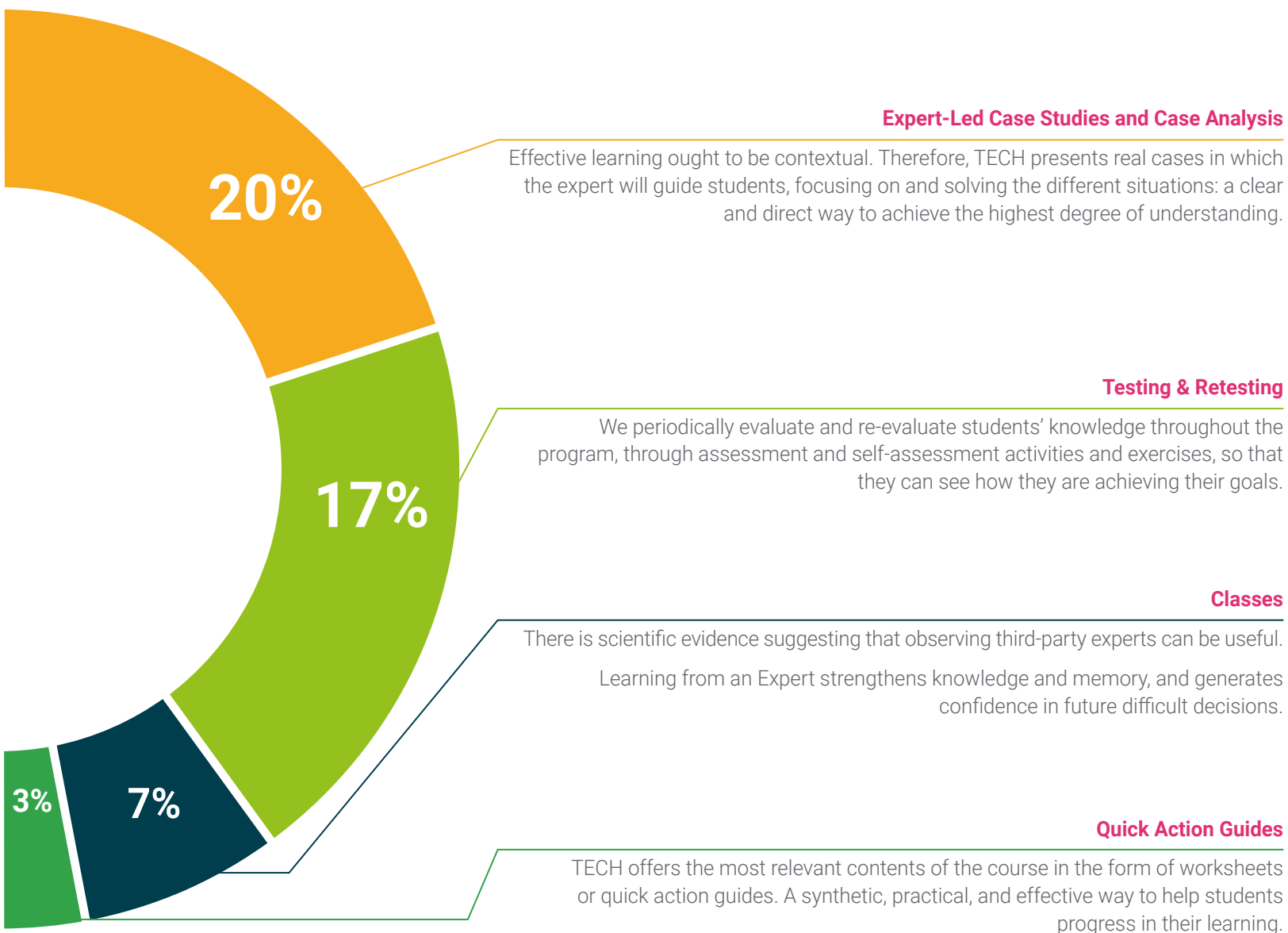
This exclusive educational system for presenting multimedia content was awarded by Microsoft as a "European Success Story".



Additional Reading

Recent articles, consensus documents and international guidelines, among others. In TECH's virtual library, students will have access to everything they need to complete their course.





06

Certificate

The Postgraduate Certificate in Therapeutic Relationship with the Child, Evaluation and Diagnostic Process in Child and Adolescent Psychopathology guarantees students, in addition to the most rigorous and up-to-date education, access to a Postgraduate Certificate issued by TECH Global University.



“

*Successfully complete this program and
receive your university qualification without
having to travel or fill out laborious paperwork”*

This program will allow you to obtain your **Postgraduate Certificate in Therapeutic Relationship with the Child, Evaluation and Diagnostic Process in Child and Adolescent Psychopathology** endorsed by **TECH Global University**, the world's largest online university.

TECH Global University is an official European University publicly recognized by the Government of Andorra ([official bulletin](#)). Andorra is part of the European Higher Education Area (EHEA) since 2003. The EHEA is an initiative promoted by the European Union that aims to organize the international training framework and harmonize the higher education systems of the member countries of this space. The project promotes common values, the implementation of collaborative tools and strengthening its quality assurance mechanisms to enhance collaboration and mobility among students, researchers and academics.

This **TECH Global University** title is a European program of continuing education and professional updating that guarantees the acquisition of competencies in its area of knowledge, providing a high curricular value to the student who completes the program.

Title: **Postgraduate Certificate in Therapeutic Relationship with the Child, Evaluation and Diagnostic Process in Child and Adolescent Psychopathology**

Modality: **online**

Duration: **6 weeks**

Accreditation: **6 ECTS**





Postgraduate Certificate

Therapeutic Relationship
with the Child, Evaluation
and Diagnostic Process
in Child and Adolescent
Psychopathology

- » Modality: online
- » Duration: 6 weeks
- » Certificate: TECH Global University
- » Credits: 6 ECTS
- » Schedule: at your own pace
- » Exams: online

Postgraduate Certificate

Therapeutic Relationship with the Child,
Evaluation and Diagnostic Process in
Child and Adolescent Psychopathology

