

# Postgraduate Certificate

## Approach to Complications in Acquired Brain Injury in Physiotherapy

Endorsed by the NBA





## Postgraduate Certificate Approach to Complications in Acquired Brain Injury in Physiotherapy

- » Modality: online
- » Duration: 6 weeks
- » Certificate: TECH Global University
- » Credits: 7 ECTS
- » Schedule: at your own pace
- » Exams: online

Website: [www.techtute.com/us/physiotherapy/postgraduate-certificate/approach-complications-acquired-brain-injury-physiotherapy](http://www.techtute.com/us/physiotherapy/postgraduate-certificate/approach-complications-acquired-brain-injury-physiotherapy)

# Index

01

Introduction

---

*p. 4*

02

Objectives

---

*p. 8*

03

Course Management

---

*p. 12*

04

Structure and Content

---

*p. 16*

05

Methodology

---

*p. 20*

06

Certificate

---

*p. 28*

# 01

# Introduction

The increase in the incidence of Acquired Brain Injury (ABI), especially stroke, and its survival, make neurorehabilitation and, therefore, physiotherapy, an indispensable element, since stroke is currently a leading cause of disability. This, coupled with the public's awareness of the need for specialized professionals, is leading to an increase in the demand for physiotherapists who are able to understand how the nervous system works after an injury and how to get the most out of it to minimize the after-effects of the injury.





“

*This Postgraduate Certificate in Approach to Complications in Acquired Brain Injury in Physiotherapy will generate a sense of confidence in the performance of your profession, which will help you to grow personally and professionally”*

In addition, we are living a time of great advances in the field of Neuroscience, as well as Physiotherapy as a science, which compels to update students' knowledge both about the functioning of the nervous system, as well as how to evaluate and therapeutically approach a person with ABI, since each injury is different and will manifest itself in a different way in each patient.

This Postgraduate Certificate in Approach to Complications in Acquired Brain Injury in Physiotherapy aims to be a compendium of the most up-to-date evidence and scientific knowledge of the nervous system and its rehabilitation when it is injured in a unexpected way. Thanks to this, it is presented as a program capable of providing specialist training to physiotherapists who have never dealt with people with ABI, but who are interested in steering their professional future towards this type of patient.

Equally, professionals that are already neurological physiotherapists, whether or not they deal with ABI, will find the opportunity to update their knowledge and achieve a more advanced specialization in this type of patients.

In addition, by understanding so much information about Neuroscience and functionality, it can be a useful tool for the physiotherapist whose target patient is not specifically one suffering from an ABI or a neurological pathology, yet needs to know the ins and outs of the nervous system to better understand and address the injury or therapeutic need of the patient.

This **Postgraduate Certificate in Approach to Complications in Acquired Brain Injury in Physiotherapy** contains the most complete and up-to-date scientific program on the market. The most important features include:

- ♦ Practical cases presented by experts in the Approach to Complications in Acquired Brain Injury for Physiotherapy
- ♦ The graphic, schematic, and eminently practical contents with which they are created provide scientific and practical information on the disciplines that are essential for professional practice
- ♦ Latest innovations in the Approach to Complications in Acquired Brain Injury in Physiotherapy
- ♦ Practical exercises where the self-assessment process can be carried out to improve learning
- ♦ Special emphasis on innovative methodologies in the Approach to Complications in Acquired Brain Injury in Physiotherapy
- ♦ Theoretical lessons, questions to the expert, debate forums on controversial topics, and individual reflection assignments
- ♦ Content that is accessible from any fixed or portable device with an Internet connection



*Update your knowledge with this Postgraduate Certificate in Approach to Complications in Acquired Brain Injury in Physiotherapy”*

“

*This Postgraduate Certificate may be the best investment you can make when choosing a refresher program, for two reasons: in addition to updating your knowledge in the Approach to Complications in Acquired Brain Injury in Physiotherapy you will obtain a qualification from TECH Global University"*

The teaching staff includes professionals from the field of Approach to Complications in Acquired Brain Injury in Physiotherapy, who bring their experience to training, as well as renowned specialists from leading societies and prestigious universities.

The multimedia content developed with the latest educational technology will provide the professional with situated and contextual learning, i.e., a simulated environment that will provide an immersive training program to train in real situations.

This program is designed around Problem Based Learning, whereby the student must try to solve the different professional practice situations that arise during the academic year. For this reason, the student will be assisted by an innovative, interactive video system created by renowned and experienced experts in the field of Approach to Complications in Acquired Brain Injury in Physiotherapy with extensive teaching experience.

*Increase your decision-making confidence by updating your knowledge through this Postgraduate Certificate.*

*Make the most of the opportunity to learn about the latest advances in the Approach to Complications in Acquired Brain Injury in Physiotherapy and improve your patient care*



# 02 Objectives

The Postgraduate Certificate in the Approach to Complications in Acquired Brain Injury in Physiotherapy is oriented to facilitate the practice of the physiotherapist in their daily work.





“

*This program is designed to help you update your knowledge of the Approach to Complications in Acquired Brain Injury in Physiotherapy, with the use of the latest educational technology, to contribute with quality and confidence to the decision making and monitoring of your students”*



## General Objectives

---

- Learn to locate the different anatomical structures of the region
- Identify pathologies to ensure correct ultrasound guided physiotherapy treatment
- Define the limits of ultrasound
- Learn about the use of ultrasound in the framework of physiotherapist skills



*At TECH we are committed to your future and for that reason we make the effort to bring you the most complete program on the market"*





## Specific Objectives

---

- ♦ Revise the most frequent complication of patients with ABI to prevent them or alleviate them
- ♦ Learn to identify pain and how to approach it
- ♦ Identify the factors which provoke shoulder pain, how to prevent it and how to approach it once it appears
- ♦ Recognize respiratory complications and know their approach from a physiotherapy point of view
- ♦ Learn to identify the signs and symptoms of complications that must be referred to other professionals

03

# Course Management

The program includes in its teaching staff leading specialists in the Approach to Complications in Acquired Brain Injury in Physiotherapy, who bring to this training the experience from their work. In addition, other specialists of recognized prestige participate in its design and elaboration, completing the program in an interdisciplinary manner.



“

*Learn the latest advances in the procedures in the field of the Approach to Complications in Acquired Brain Injury in Physiotherapy from leading professionals”*

## Management



### Ms. De Andrés Garrido, Berta

- ♦ Neurophysiotherapist at the Neurological Rehabilitation Center in Neurointegra
- ♦ Diploma in Physiotherapy
- ♦ Master's Degree in Neurological Physiotherapy of Adults and Children
- ♦ Master's Degree in Neurological Physiotherapy

## Professors

### Dr. Gómez Soriano, Julio

- ♦ Head of the Research Group in Physiotherapy Toledo (GIFTO) University School of Nursing and Physiotherapy of Toledo University of Castilla La Mancha(UCLM)
- ♦ Sensory-Motor function National Hospital of Paraplegics Toledo
- ♦ Diploma in Physiotherapy
- ♦ Degree in Physical Activity and Sports Sciences from UCLM.
- ♦ Master's Degree in Neurological Pathology and PhD from Rey Juan Carlos University
- ♦ Currently studying a PhD in Health Psychology from the National University of Remote Education

### Dr. Bravo, Elisabeth

- ♦ University School of Nursing and Physiotherapy in Toledo University of Castilla La Mancha,
- ♦ Member of the CSIC bioengineering group and completed her thesis at the Sensory-motor function group of the National Hospital of Paraplegics
- ♦ Associate PhD Professor
- ♦ Master's Degree in Study and Treatment of Pain



**Dr. De la Fuente, Rebeca**

- ◆ Attending Physician in the Neurology Unit of the Leon University Care Complex
- ◆ Degree in Medicine from the University of Salamanca
- ◆ Neurology Specialist in Salamanca University Hospital
- ◆ Master's Degree in Neuro-immunology from the Autonomous University Madrid

**Dr. Lara, Lidia**

- ◆ Attending Physician in the Neurology Department of León Care Complex
- ◆ Degree in Medicine and Surgery
- ◆ Specialist Degree in Neurology

**Dr. Mendoza González, Lucrecia**

- ◆ Medical Specialist in Physical Medicine and Rehabilitation
- ◆ Master's Degree in Evaluative Medicine and Medical Expertise
- ◆ Specialist Degree in Child Disability
- ◆ Expert in Child Rehabilitation
- ◆ Expert in Musculoskeletal Ultrasound

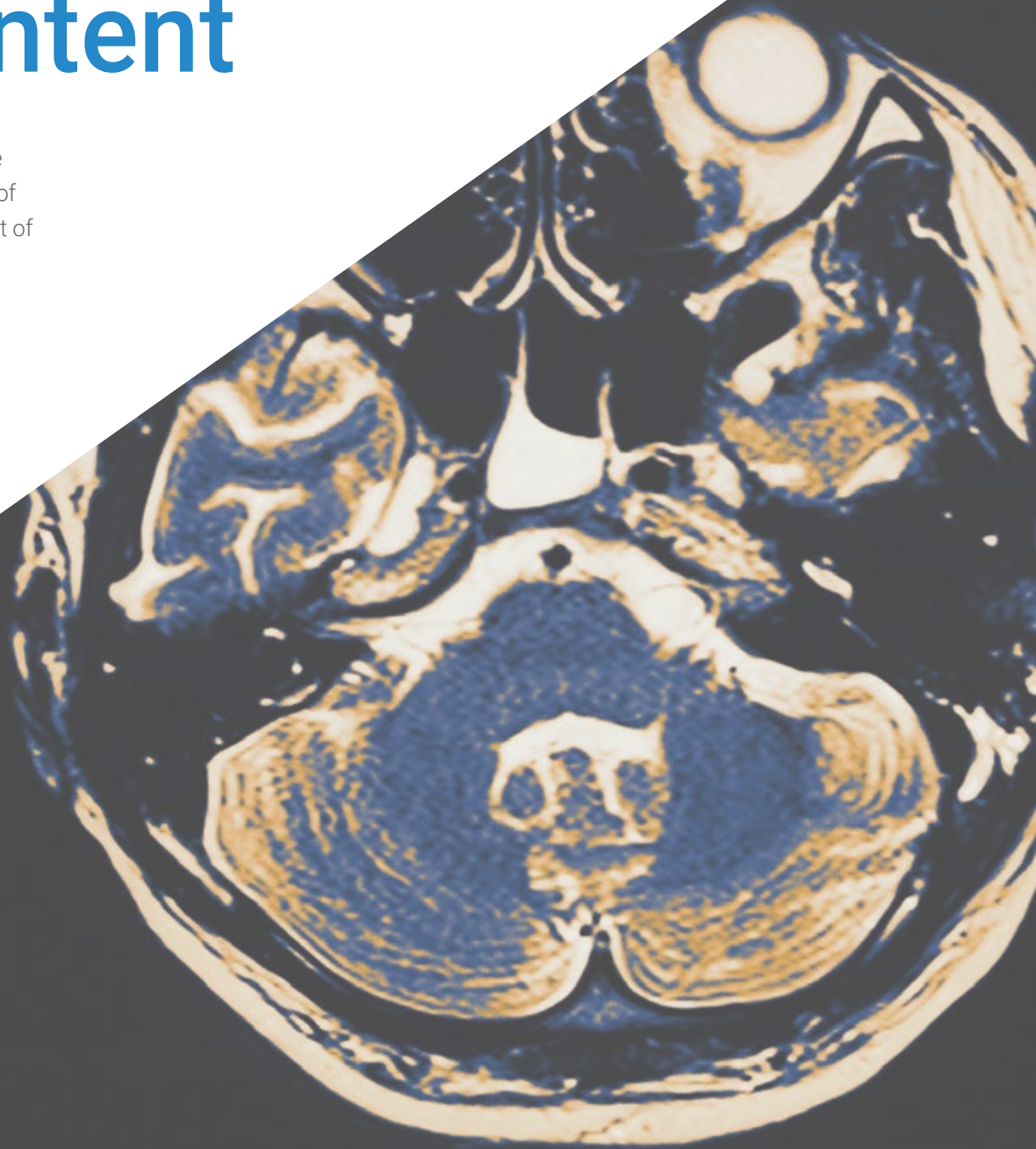
**Mr. Moreno Martínez, Alejandro**

- ◆ Physiotherapy in Pediatrics and Early Care Dry Needling in Myofascial Pain Syndrome
- ◆ Specialist in Orthopedic Manual Therapy
- ◆ Master's Degree in Advanced Manual Physiotherapy
- ◆ Postgraduate Diploma Respiratory Physiotherapy

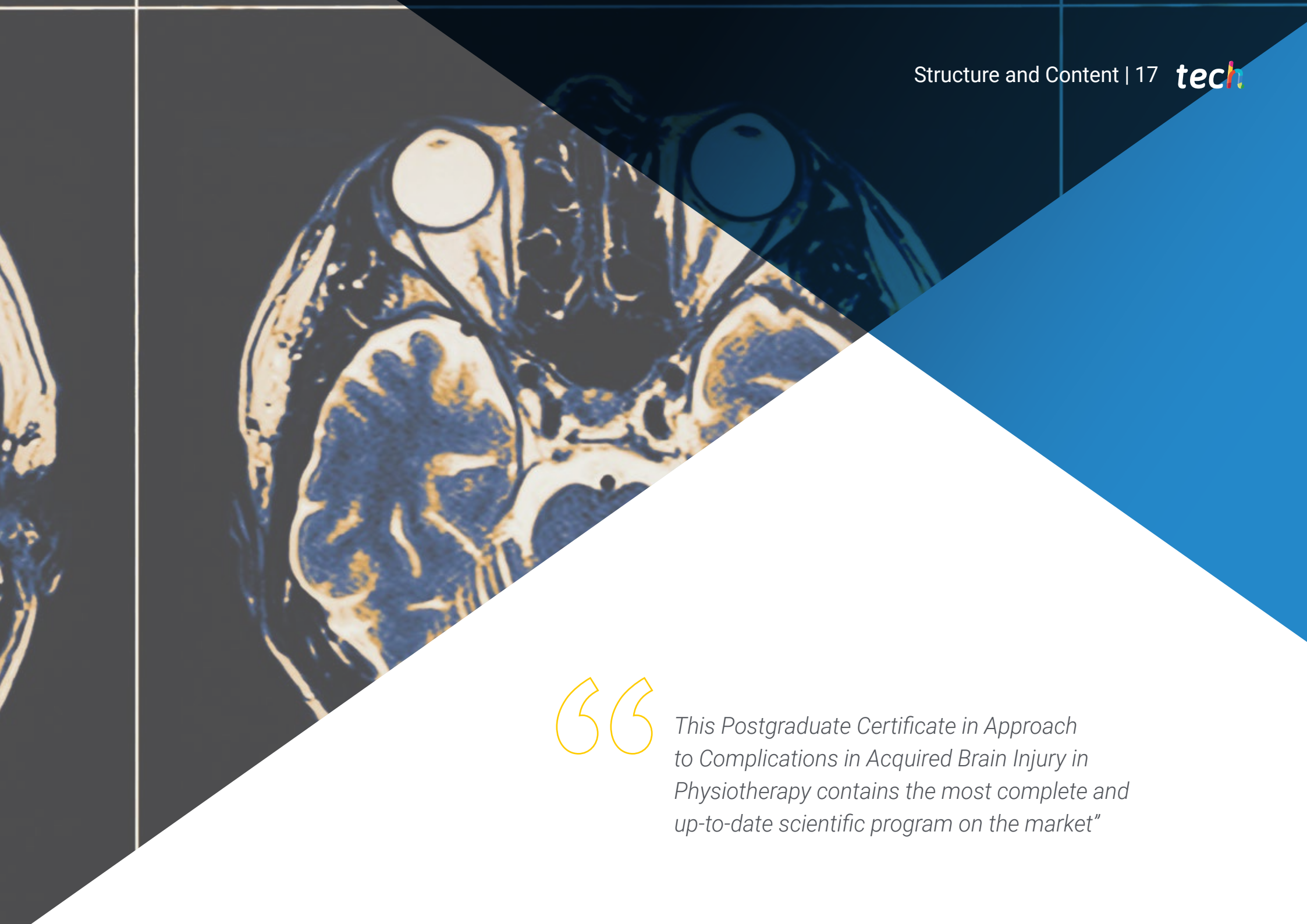
04

# Structure and Content

The structure of the contents has been designed by a team of professionals from the best educational centers, universities, and companies in the national territory, aware of the relevance of current specialization in order to intervene in the training and support of students, and committed to quality teaching through new educational technologies







“

*This Postgraduate Certificate in Approach to Complications in Acquired Brain Injury in Physiotherapy contains the most complete and up-to-date scientific program on the market”*

## Module 1. Complications in Patients with ABI

- 1.1. Pain
  - 1.1.1. Painful Shoulder
  - 1.1.2. Neuropathic Pain
- 1.2. Respiratory System
  - 1.2.1. Respiratory Physiotherapy
- 1.3. Epilepsy
- 1.4. Musculoskeletal Complications
- 1.5. Complications of Spinal Cord Injury





“

*A unique, key, and decisive training experience to boost your professional development”*

# 05 Methodology

This academic program offers students a different way of learning. Our methodology uses a cyclical learning approach: **Relearning**.

This teaching system is used, for example, in the most prestigious medical schools in the world, and major publications such as the **New England Journal of Medicine** have considered it to be one of the most effective.





“

*Discover Relearning, a system that abandons conventional linear learning, to take you through cyclical teaching systems: a way of learning that has proven to be extremely effective, especially in subjects that require memorization"*

## At TECH we use the Case Method

What should a professional do in a given situation? Throughout the program, students will face multiple simulated clinical cases, based on real patients, in which they will have to do research, establish hypotheses, and ultimately resolve the situation. There is an abundance of scientific evidence on the effectiveness of the method. Physiotherapists/kinesiologists learn better, faster, and more sustainably over time.

*With TECH you will experience a way of learning that is shaking the foundations of traditional universities around the world.*



According to Dr. Gérvas, the clinical case is the annotated presentation of a patient, or group of patients, which becomes a "case", an example or model that illustrates some peculiar clinical component, either because of its teaching power or because of its uniqueness or rarity. It is essential that the case is based on current professional life, trying to recreate the real conditions of professional physiotherapy practice.

“

*Did you know that this method was developed in 1912, at Harvard, for law students? The case method consisted of presenting students with real-life, complex situations for them to make decisions and justify their decisions on how to solve them. In 1924, Harvard adopted it as a standard teaching method.*

The effectiveness of the method is justified by four fundamental achievements:

1. Physiotherapists/kinesiologists who follow this method not only grasp concepts, but also develop their mental capacity, by evaluating real situations and applying their knowledge.
2. The learning process has a clear focus on practical skills that allow the physiotherapist/kinesiologist to better integrate into the real world.
3. Ideas and concepts are understood more efficiently, given that the example situations are based on real-life.
4. Students like to feel that the effort they put into their studies is worthwhile. This then translates into a greater interest in learning and more time dedicated to working on the course.



## Relearning Methodology

At TECH we enhance the Harvard case method with the best 100% online teaching methodology available: Relearning.

This university is the first in the world to combine the study of clinical cases with a 100% online learning system based on repetition, combining a minimum of 8 different elements in each lesson, a real revolution with respect to the mere study and analysis of cases.



*The physiotherapist/kinesiologist will learn through real cases and by solving complex situations in simulated learning environments. These simulations are developed using state-of-the-art software to facilitate immersive learning.*



At the forefront of world teaching, the Relearning method has managed to improve the overall satisfaction levels of professionals who complete their studies, with respect to the quality indicators of the best online university (Columbia University).

With this methodology we trained more than 65,000 physiotherapists/kinesiologists with unprecedented success in all clinical specialties, regardless of the workload. Our pedagogical methodology is developed in a highly competitive environment, with a university student body with a strong socioeconomic profile and an average age of 43.5 years old.

*Relearning will allow you to learn with less effort and better performance, involving you more in your training, developing a critical mindset, defending arguments, and contrasting opinions: a direct equation for success.*

In our program, learning is not a linear process, but rather a spiral (learn, unlearn, forget, and re-learn). Therefore, we combine each of these elements concentrically.

The overall score obtained by our learning system is 8.01, according to the highest international standards.



This program offers the best educational material, prepared with professionals in mind:



#### Study Material

All teaching material is produced by the specialists who teach the course, specifically for the course, so that the teaching content is really specific and precise.

These contents are then applied to the audiovisual format, to create the TECH online working method. All this, with the latest techniques that offer high quality pieces in each and every one of the materials that are made available to the student.



#### Physiotherapy Techniques and Procedures on Video

TECH brings students closer to the latest techniques, the latest educational advances and to the forefront of current Physiotherapy techniques and procedures. All of this in direct contact with students and explained in detail so as to aid their assimilation and understanding. And best of all, you can watch them as many times as you want.



#### Interactive Summaries

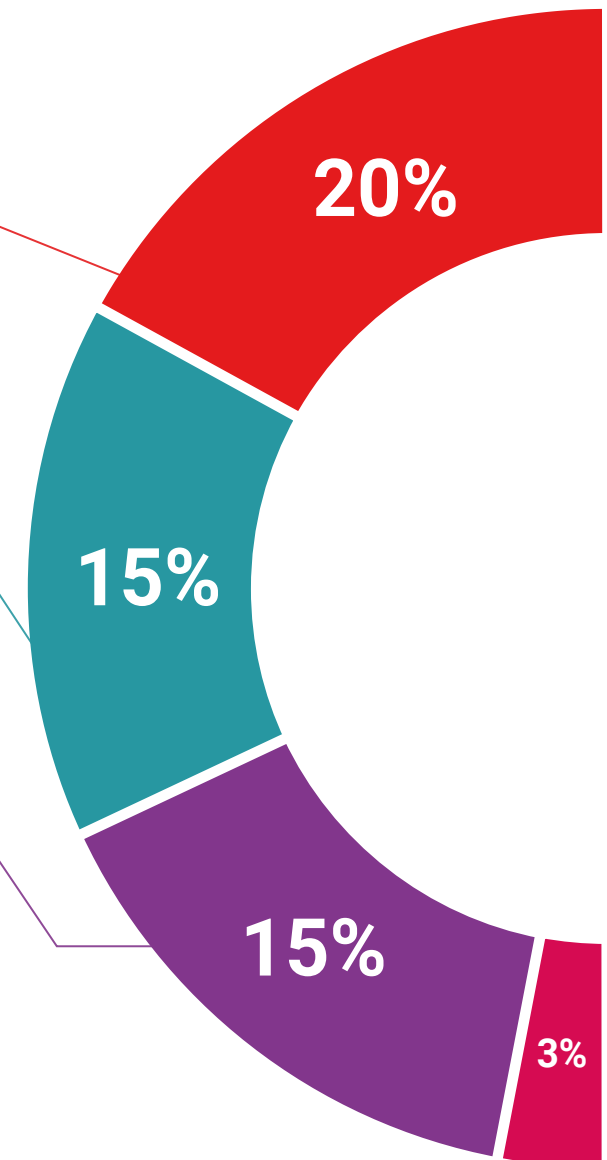
The TECH team presents the contents attractively and dynamically in multimedia lessons that include audio, videos, images, diagrams, and concept maps in order to reinforce knowledge.

This unique multimedia content presentation training system was awarded by Microsoft as a "European Success Story".



#### Additional Reading

Recent articles, consensus documents and international guidelines, among others. In TECH's virtual library, students will have access to everything they need to complete their course.





#### Expert-Led Case Studies and Case Analysis

Effective learning ought to be contextual. Therefore, TECH presents real cases in which the expert will guide students, focusing on and solving the different situations: a clear and direct way to achieve the highest degree of understanding.



#### Testing & Retesting

We periodically evaluate and re-evaluate students' knowledge throughout the program, through assessment and self-assessment activities and exercises, so that they can see how they are achieving their goals.



#### Classes

There is scientific evidence on the usefulness of learning by observing experts. The system known as Learning from an Expert strengthens knowledge and memory, and generates confidence in future difficult decisions.



#### Quick Action Guides

TECH offers the most relevant contents of the course in the form of worksheets or quick action guides. A synthetic, practical, and effective way to help students progress in their learning.



06

# Certificate

The Postgraduate Certificate in the Approach to Complications in Acquired Brain Injury in Physiotherapy guarantees you, in addition to the most rigorous and up-to-date training, access to a Postgraduate Certificate issued by TECH Global University.



“

*Successfully complete this training program and receive your university certificate without travel or laborious paperwork”*

This program will allow you to obtain your **Postgraduate Certificate in Approach to Complications in Acquired Brain Injury in Physiotherapy** endorsed by **TECH Global University**, the world's largest online university.

**TECH Global University** is an official European University publicly recognized by the Government of Andorra ([official bulletin](#)). Andorra is part of the European Higher Education Area (EHEA) since 2003. The EHEA is an initiative promoted by the European Union that aims to organize the international training framework and harmonize the higher education systems of the member countries of this space. The project promotes common values, the implementation of collaborative tools and strengthening its quality assurance mechanisms to enhance collaboration and mobility among students, researchers and academics.

This **TECH Global University** title is a European program of continuing education and professional updating that guarantees the acquisition of competencies in its area of knowledge, providing a high curricular value to the student who completes the program.

Title: **Postgraduate Certificate in Approach to Complications in Acquired Brain Injury in Physiotherapy**

Modality: **online**

Duration: **6 weeks**

Accreditation: **7 ECTS**



health future  
confidence people  
education information tutors  
guarantee accreditation teaching  
institutions technology learning  
community commitment  
personalized service innovation  
knowledge present  
development lang  
virtual classroom



**Postgraduate Certificate**  
Approach to Complications  
in Acquired Brain Injury  
in Physiotherapy

- » Modality: **online**
- » Duration: **6 weeks**
- » Certificate: **TECH Global University**
- » Credits: **7 ECTS**
- » Schedule: **at your own pace**
- » Exams: **online**

# Postgraduate Certificate

## Approach to Complications in Acquired Brain Injury in Physiotherapy

Endorsed by the NBA

