

Postgraduate Certificate Pharmaceutical Care in Community Pharmacies





Postgraduate Certificate Pharmaceutical Care in Community Pharmacies

- » Modality: online
- » Duration: 6 weeks
- » Certificate: TECH Technological University
- » Dedication: 16h/week
- » Schedule: at your own pace
- » Exams: online

Website: www.techtute.com/us/pharmacy/postgraduate-certificate/pharmaceutical-care-community-pharmacies

Index

01

Introduction

p. 4

02

Objectives

p. 8

03

Course Management

p. 12

04

Structure and Content

p. 18

05

Methodology

p. 22

06

Certificate

p. 30

01

Introduction

The role played by community pharmacy is increasing in society. The ability of professionals to adequately transmit pharmacological information, the preparation of formulations or home care has made it possible to improve the health of patients. For this reason, more and more pharmacists choose to continuously update their knowledge about their functions in this field. Thus, this program is born, which leads students to delve through innovative teaching materials on recent advances in Professional Pharmaceutical Care Services and the current situation in different countries around the world. A complete syllabus 100% online, without classes with fixed schedules, which facilitates the self-management of time to be able to take this program.





“

A Postgraduate Certificate in Pharmaceutical Care in Community Pharmacy compatible with your professional and personal responsibilities"

The Community Pharmacy plays an essential role for people by being able to guide them on the suitability of certain medications, provide health information close and always at the service of the health of all citizens. In addition, it is a necessary space to detect certain diseases at their first symptoms, to deal with them and to control their epidemiology.

For this reason, the role of pharmacists who perform their functions in this area is increasingly valued by society. A reality that has led TECH to design a complete Postgraduate Certificate that focuses on Pharmaceutical Care in Community Pharmacy through an intensive 6-week program.

It is an advanced syllabus that covers the Pharmaceutical Care (PA) and the Professional Pharmaceutical Care Services, to later delve into these tasks developed in the social-healthcare field or in Home Pharmaceutical Care. A complete content that brings the most current information in this field, accompanied by first class teaching material: video summaries, In Focus videos, specialized readings or case studies.

In addition, thanks to the *Relearning* method used by TECH, the graduate will not have to dedicate a large number of hours to study and memorization. With this system, the continuous repetition of key concepts will allow them to consolidate the most important subjects.

In this way, this academic institution provides an excellent opportunity to be able to carry out an effective upgrade in Pharmaceutical Care in Community Pharmacy through a flexible program. Students only need an electronic device with an internet connection to be able to view the content hosted on the virtual platform at any time. An ideal option for those who are looking for a quality Postgraduate Certificate that is compatible with their daily activities.

This **Postgraduate Certificate in Pharmaceutical Care in Community Pharmacy** contains the most complete and up-to-date scientific program on the market. The most important features include:

- ♦ The examination of practical cases presented by experts in Community Pharmacy
- ♦ The graphic, schematic and practical contents with which it is conceived scientific and practical information on those disciplines that are essential for professional practice
- ♦ Practical exercises where the self-assessment process can be carried out to improve learning
- ♦ Its special emphasis on innovative methodologies
- ♦ Theoretical lessons, questions to the expert, debate forums on controversial topics, and individual reflection assignments
- ♦ Content that is accessible from any fixed or portable device with an Internet connection



Delve whenever you want into the current state of Pharmaceutical Care in Community Pharmacy in different parts of the world"

“

Reduce the hours of memorization and focus on the most relevant concepts thanks to the Relearning system of this program"

The program includes in its teaching staff a team of professionals from the sector who pour into this course the experience of their work, in addition to recognized specialists from reference societies and prestigious universities.

Its multimedia content, developed with the latest educational technology, will provide the professional with situated and contextual learning, i.e., a simulated environment that will provide an immersion education programmed to learn in real situations.

The design of this program focuses on Problem-Based Learning, by means of which the professional must try to solve the different professional practice situations that are presented throughout the academic course. For this purpose, the student will be assisted by an innovative interactive video system created by renowned and experienced experts.

An academic option that takes you dynamically into the advances in Pharmaceutical Health and Social Care.

Delve into the latest lines of research focused on Professional Pharmaceutical Services.



02 Objectives

This program has been designed with the main objective of offering professionals the latest information on Pharmaceutical Care in Community Pharmacy. All this under a theoretical-practical approach given by the didactic materials of this degree and the need to provide an update that will have a direct impact on their daily work. In order to achieve this objective, students will be assisted by the support of a teaching staff with an excellent background in this field.





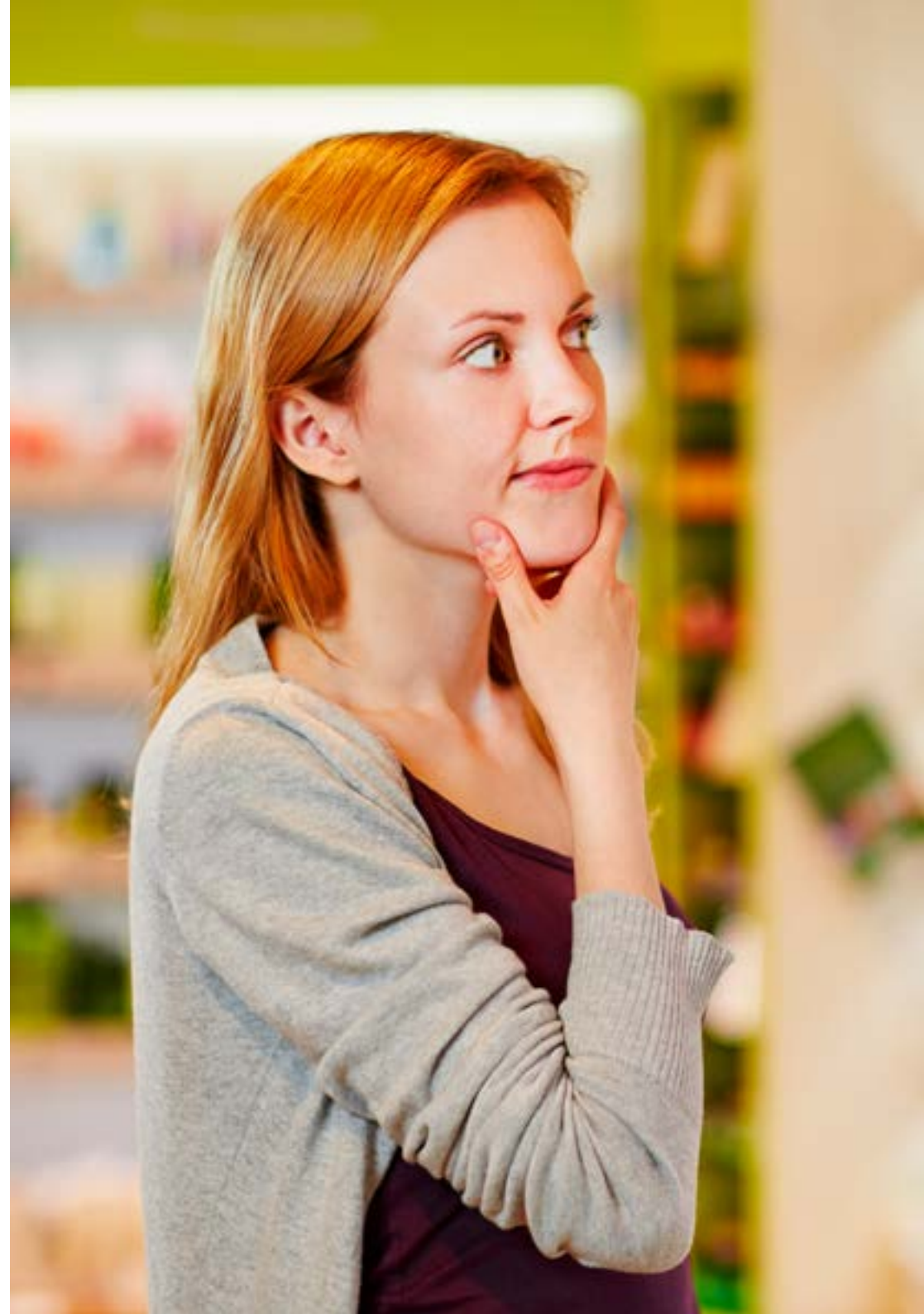
“

Investigate the new challenges facing Community Pharmacy and the services it provides to citizens”



General Objectives

- ♦ Update the knowledge of community pharmacists in the different professional pharmaceutical care services
- ♦ Promote pharmaceutical care strategies based on the approach to the patient from the community pharmacy in the socio-health and home environment
- ♦ Encourage the acquisition of skills, through a powerful audiovisual system, and also allows development through online simulation workshops and/or specific
- ♦ Encourage the professional stimulation of community pharmacists through following continuous education and research
- ♦ Incorporate the provision of the different Professional Pharmaceutical Care Services to the usual pharmaceutical practice of the Community Pharmacy
- ♦ Promote the professional development of the community pharmacist professional in the field of Community Pharmacy





Specific Objectives

- ♦ Analyze the influence of pharmaceutical care in community pharmacy, its contributions and scope
- ♦ Differentiate between the various services provided in community pharmacy
- ♦ Reconsider new pharmaceutical services in patient healthcare
- ♦ Identify the Professional Pharmaceutical Care Services that can be provided to the patient from the Community Pharmacy in the different care settings
- ♦ Differentiate the role of the community pharmacist in each of the different healthcare settings
- ♦ Identify PPS related to veterinary drugs provided in the community pharmacy

“

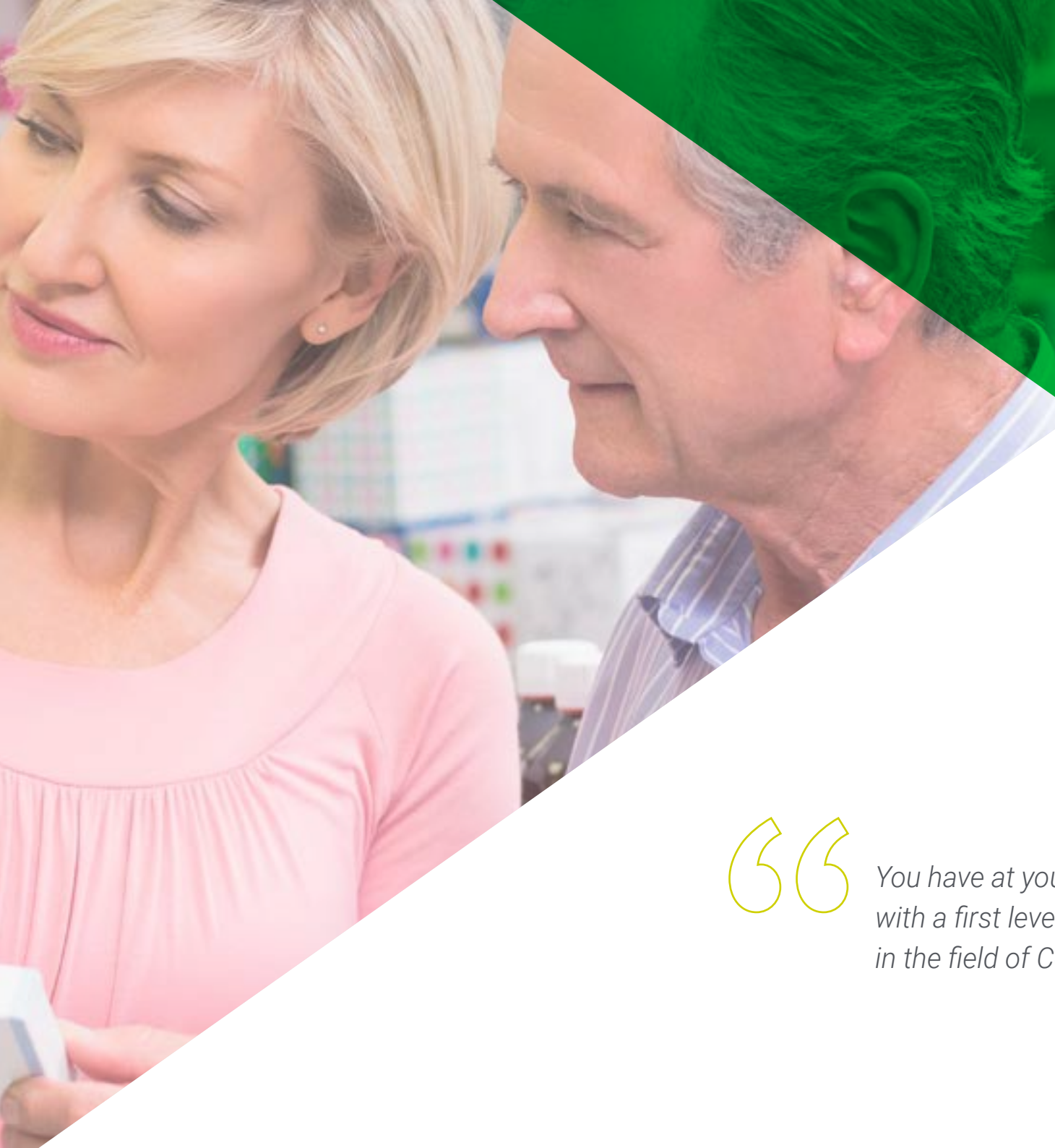
Enhance your competencies and skills to be able to offer people the most rigorous information on the use of medicines”

03

Course Management

TECH considers it essential to have the best experts in each of its programs, so that students receive the most relevant and quality information. For this reason, TECH has brought together a complete team of professionals with solid experience in Community Pharmacy. Their vision of this field and the possibilities that currently exist mark the syllabus that makes up this program. In addition, thanks to their proximity, the graduate will be able to resolve any doubts they may have about the content of the syllabus.





“

You have at your disposal a teaching staff with a first level professional background in the field of Community Pharmacy”

Management



Dr. Baixauli Fernández, Vicente Javier

- ♦ Community Pharmacist
- ♦ Pharmacist owner of a community pharmacy in Valencia
- ♦ Vice-president of the Spanish Society of Community Pharmacy (SEFAC)
- ♦ Member of the governing board of the micof of valencia
- ♦ PhD in Pharmacy from CEU Cardenal Herrera University
- ♦ Degree in Food Science and Technology from the E.T.S. of Agricultural Engineers of the Polytechnic University of Valencia
- ♦ University expert in pharmacotherapeutic monitoring from the University of Granada
- ♦ Experience teaching in several editions of university masters and educational courses
- ♦ Author of ACOFAR, El Farmacéutico, Offarm, Pharmaceutical Care Spain, Community Pharmacists
- ♦ Co-author of more than 23 books

Professors

Mr. Acosta Gómez, Jaime Antonio

- ♦ Pharmacist at Acosta Pharmacy
- ♦ Co-Chair of the FIP Technology Forum
- ♦ Audit at the Hermandad Farmacéutica of the Mediterranean
- ♦ Degree in Pharmacy from the Complutense University of Madrid
- ♦ Senior Management Program in Management Institutions at IESE Business School
- ♦ Master's Degree in Pharmaceutical Care by the University of Granada
- ♦ FIP Fellow Award
- ♦ Member of: Official College of Pharmacists of Madrid and FIP

Ms. Andraca Iturbe, Leire

- ♦ Secretary of Spanish Society of Clinical, Family and Community Pharmacy
- ♦ Coordinator of the SEFAC Women working group
- ♦ Attendance at numerous national congresses as a speaker
- ♦ Co-author of articles in several journals of the sector
- ♦ Co-author of SEFAC and Cofbi training courses
- ♦ Participant in several SEFAC and Cofbi research studies
- ♦ Speaker at workshops and training courses in Cofbizkaia, Gipuzkoa and Araba
- ♦ Degree in Pharmacy. UNAV
- ♦ Bachelor's Degree in Communication Sciences. UPV
- ♦ Master's Degree in Pharmaceutical Attention. University of Valencia
- ♦ Specialization course in orthopedics. University of Salamanca
- ♦ Member of: Working Groups: Hypertension and VR, Pain and Immunology, Cofbi Working Group Cofbi's Working Group "Update of Pharmaceutical Practice" and SEFAC Secretary. Community pharmacist in Barakaldo

Ms. Gutiérrez Muñoz, Lucrecia

- ♦ Community Pharmacist
- ♦ Graduate in Pharmacy from the Complutense University of Madrid
- ♦ Postgraduate in Dermocosmetics applied to the Pharmacy Office
- ♦ Collaborator in the training department at the Official College of Pharmacists in Madrid
- ♦ Technical Director in of El Boalo from Pharmacy
- ♦ Member of: Spanish Society of Clinical, Family and Community Pharmacy.(SEFAC)

Dr. Molinero Crespo, Ana

- ♦ Doctor of Pharmacy specialized in Strategic Organization of Scientific Medical Societies
- ♦ Vice President of the Spanish Society of Clinical, Family and Community Pharmacy (SEFAC)
- ♦ Technical Director at Molinero Pharmacy
- ♦ Community Pharmacist Fuenlabrada, Madrid
- ♦ Associate Professor in Biomedical Sciences, Alcalá University
- ♦ Doctor in Pharmacy, Complutense University of Madrid
- ♦ Graduate in Pharmacy from the Complutense University of Madrid
- ♦ Work in the Strategic Organization of Scientific Medical Societies. Esade
- ♦ Master's Degree in Tobacco Cessation from the University of Barcelona
- ♦ Master's Degree in Pharmacy Office Management from the University of Alcalá
- ♦ Specialist in Clinical Analysis by the Complutense University of Madrid

Ms. Mora Luque, María José

- ♦ Community and Academic Pharmacist
- ♦ Academician at the Royal Sevillian Academy of Veterinary Science
- ♦ Community Pharmacist in Seville
- ♦ Speaker at courses and workshops on smoking
- ♦ Technical Commercial Delegate and Pharmaceutical Guarantor at Laboratorios Ovejero SA
- ♦ Degree in Pharmacy from the University of Seville
- ♦ Master's Degree in Smoking from the University of Seville
- ♦ Master's Degree in Health Promotion and Psychosocial Support for Patients, University of Seville
- ♦ Nutritional Pharmaceutical Care in Frequent Pathologies at the General Council of Official Associations of Pharmacists
- ♦ Advances in Pharmacology and Pharmacotherapy at the Spanish General Council of Pharmacists Colleges
- ♦ Member of: Spanish Society of Family and Community Medicine Anti-tobacco Group

Ms. Morillo Lisa, Rosa María

- ♦ Community Pharmacist
- ♦ Community Pharmacist in Alcalá de Ebro
- ♦ Member of Rural Pharmacy in the Official College of Pharmacists of Zaragoza
- ♦ Degree in Pharmacy

Dr. Murillo Fernández, María Dolores

- ♦ Community Pharmacist Seville
- ♦ Doctor of Pharmacy
- ♦ Member of: Research Group in Pharmacotherapy and Primary Care





Dr. Moreno Royo, Lucrecia

- ◆ Researcher and professor
- ◆ Professor of Pharmacology at the University CEU Cardenal Herrera
- ◆ Honorary Member of the Valencian Medical Institute
- ◆ British Medical Journal Case Reports Reviewer
- ◆ Doctor of Pharmacy from the University of Valencia
- ◆ Degree in Pharmacy from the University of Valencia
- ◆ Acknowledgements: 21st Sandalio Miguel-María Aparicio Prize, awarded by the Domus Cultural Institution Foundation, 1st Prize in the Distribution section for the *Neuroprotected Cities* project, by the Go Health Awards, Prize from the Royal Academy of Medicine and Surgery of Valencia
- ◆ Member of the scientific committee of: Young Pharmaceutical Care Spain Ars Pharmaceutica
- ◆ Community Pharmacists Pharmaceutical Care



Take the opportunity to learn about the latest advances in this field in order to apply it to your daily practice"

04

Structure and Content

The syllabus of this Postgraduate Certificate has been designed to be able to condense, in only 6 weeks, the most exhaustive and rigorous content about the most exhaustive and rigorous content on the current panorama of Pharmaceutical Care in Community Pharmacy. A study plan, planned and designed by real specialists in the sector that will allow students to obtain a complete upgrade. In addition, thanks to the virtual library, accessible 24 hours a day, 7 days a week, the professional will be able to access this information whenever and however they wish.





“

A unique academic experience in the current university panorama, which will bring you up to date with the new role of the pharmacist"

Module 1. Pharmaceutical Care in Community Pharmacies

- 1.1. Introduction
 - 1.1.1. Pharmaceutical Care (PC)
 - 1.1.2. PPS in CP and Professional Pharmaceutical Care Services (PPCS)
- 1.2. PPS
 - 1.2.1. PPS in Community PC
 - 1.2.2. PPS in Sociosanitary PA. Community Pharmacy Service
 - 1.2.3. PPS in Home PC
- 1.3. Environment
 - 1.3.1. Situation in Different Countries
 - 1.3.2. BORRAR
 - 1.3.3. Research in PPS





“

Inquire through the virtual library on SPFs related to veterinary medications to be loaned in Community Pharmacy”

05

Methodology

This academic program offers students a different way of learning. Our methodology uses a cyclical learning approach: **Relearning**.

This teaching system is used, for example, in the most prestigious medical schools in the world, and major publications such as the **New England Journal of Medicine** have considered it to be one of the most effective.





Discover Relearning, a system that abandons conventional linear learning, to take you through cyclical teaching systems: a way of learning that has proven to be extremely effective, especially in subjects that require memorization"

At TECH we use the Case Method

What should a professional do in a given situation? Throughout the program, students will be confronted with multiple simulated clinical cases based on real patients, in which they will have to investigate, establish hypotheses and ultimately, resolve the situation. There is an abundance of scientific evidence on the effectiveness of the method. Pharmacists learn better, more quickly and more sustainably over time.

With TECH you will experience a way of learning that is shaking the foundations of traditional universities around the world.



According to Dr. Gervas, the clinical case is the annotated presentation of a patient, or group of patients, which becomes a "case", an example or model that illustrates some peculiar clinical component, either because of its teaching power or because of its uniqueness or rarity. It is essential that the case is based on current professional life, attempting to recreate the actual conditions in a pharmacist's professional practice.

“

Did you know that this method was developed in 1912, at Harvard, for law students? The case method consisted of presenting students with real-life, complex situations for them to make decisions and justify their decisions on how to solve them. In 1924, Harvard adopted it as a standard teaching method”

The effectiveness of the method is justified by four fundamental achievements:

1. Pharmacists who follow this method not only grasp concepts, but also develop their mental capacity, by evaluating real situations and applying their knowledge.
2. Learning is solidly translated into practical skills that allow the student to better integrate into the real world.
3. Ideas and concepts are understood more efficiently, given that the example situations are based on real-life.
4. Students like to feel that the effort they put into their studies is worthwhile. This then translates into a greater interest in learning and more time dedicated to working on the course.



Relearning Methodology

At TECH we enhance the case method with the best 100% online teaching methodology available: Relearning.

Our University is the first in the world to combine the study of clinical cases with a 100% online learning system based on repetition, combining a minimum of 8 different elements in each lesson, which represent a real revolution with respect to simply studying and analyzing cases.

Pharmacists will learn through real cases and by solving complex situations in simulated learning environments. These simulations are developed using state-of-the-art software to facilitate immersive learning.



At the forefront of world teaching, the Relearning method has managed to improve the overall satisfaction levels of professionals who complete their studies, with respect to the quality indicators of the best online university (Columbia University).

With this methodology, more than 115,000 pharmacists have been trained with unprecedented success in all clinical specialties, regardless of the surgical load. This pedagogical methodology is developed in a highly demanding environment, with a university student body with a high socioeconomic profile and an average age of 43.5 years.

Relearning will allow you to learn with less effort and better performance, involving you more in your specialization, developing a critical mindset, defending arguments, and contrasting opinions: a direct equation to success.

In our program, learning is not a linear process, but rather a spiral (learn, unlearn, forget, and re-learn). Therefore, we combine each of these elements concentrically.

The overall score obtained by TECH's learning system is 8.01, according to the highest international standards.



This program offers the best educational material, prepared with professionals in mind:



Study Material

All teaching material is created specifically for the course by specialist pharmacists who will be teaching the course, so that the didactic development is highly specific and accurate.

These contents are then applied to the audiovisual format, to create the TECH online working method. All this, with the latest techniques that offer high quality pieces in each and every one of the materials that are made available to the student.



Video Techniques and Procedures

TECH introduces students to the latest techniques, to the latest educational advances, to the forefront of current pharmaceutical care procedures. All of this, first hand, and explained and detailed with precision to contribute to assimilation and a better understanding. And best of all, you can watch them as many times as you want.



Interactive Summaries

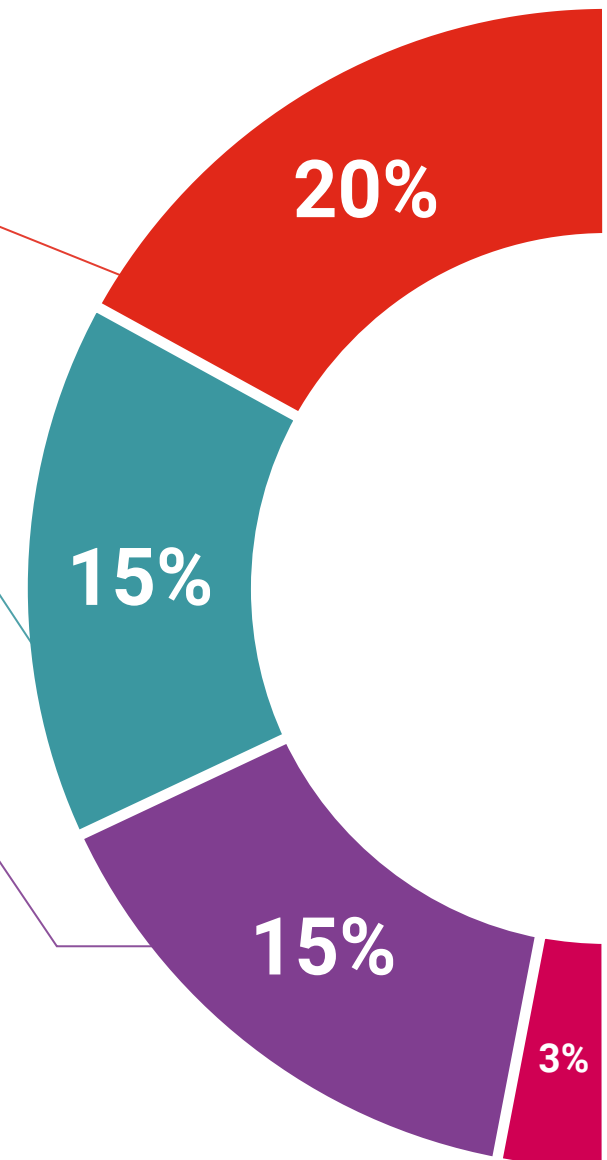
The TECH team presents the contents attractively and dynamically in multimedia lessons that include audio, videos, images, diagrams, and concept maps in order to reinforce knowledge.

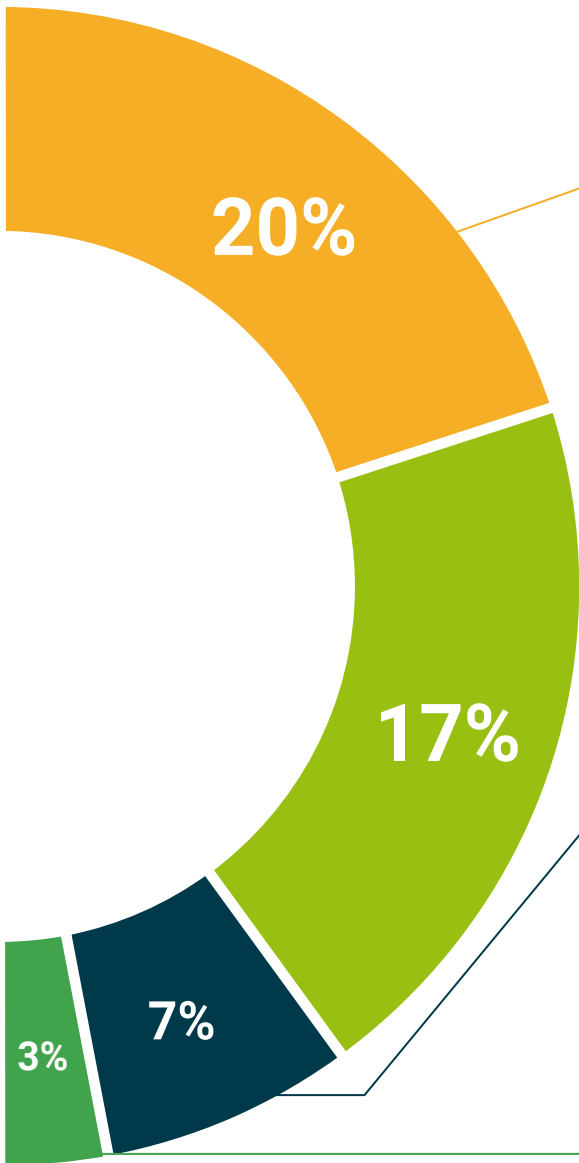
This unique multimedia content presentation training system was awarded by Microsoft as a "European Success Story".



Additional Reading

Recent articles, consensus documents and international guidelines, among others. In TECH's virtual library, students will have access to everything they need to complete their course.





Expert-Led Case Studies and Case Analysis

Effective learning ought to be contextual. Therefore, we will present you with real case developments in which the expert will guide you through focusing on and solving the different situations: a clear and direct way to achieve the highest degree of understanding.



Testing & Retesting

We periodically evaluate and re-evaluate students' knowledge throughout the program, through assessment and self-assessment activities and exercises, so that they can see how they are achieving their goals.



Classes

There is scientific evidence on the usefulness of learning by observing experts. The system known as Learning from an Expert strengthens knowledge and memory, and generates confidence in future difficult decisions.



Quick Action Guides

TECH offers the most relevant contents of the course in the form of worksheets or quick action guides. A synthetic, practical, and effective way to help students progress in their learning.



06

Certificate

The Postgraduate Certificate in in Pharmaceutical Care in Community Pharmacy guarantees, in addition to the most rigorous and up-to-date education, access to a Postgraduate Certificate diploma issued by TECH Technological University.



“

Successfully complete this program and receive your university qualification without having to travel or fill out laborious paperwork”

This **Postgraduate Certificate in Pharmaceutical Care in Community Pharmacy** contains the most complete and up-to-date scientific on the market.

After the student has passed the assessments, they will receive their corresponding **Postgraduate Certificate** issued by **TECH Technological University** via tracked delivery*.

The diploma issued by **TECH Technological University** will reflect the qualification obtained in the Postgraduate Certificate, and meets the requirements commonly demanded by labor exchanges, competitive examinations, and professional career evaluation committees.

Title: **Postgraduate Certificate in Pharmaceutical Care in Community Pharmacies**

Official N° of Hours: **200 h.**



*Apostille Convention. In the event that the student wishes to have their paper diploma issued with an apostille, TECH EDUCATION will make the necessary arrangements to obtain it, at an additional cost.

future
health confidence people
education information tutors
guarantee accreditation teaching
institutions technology learning
community commitment
personalized service innovation
knowledge present
development language
virtual classroom

tech technological
university

Postgraduate Certificate
Pharmaceutical Care
in Community Pharmacies

- » Modality: online
- » Duration: 6 weeks
- » Certificate: TECH Technological University
- » Dedication: 16h/week
- » Schedule: at your own pace
- » Exams: online

Postgraduate Certificate Pharmaceutical Care in Community Pharmacies

