

Professional Master's Degree Breastfeeding for Nursing





Professional Master's Degree Breastfeeding for Nursing

- » Modality: online
- » Duration: 12 months
- » Certificate: TECH Global University
- » Credits: 60 ECTS
- » Schedule: at your own pace
- » Exams: online

Website: www.techtute.com/us/nursing/professional-master-degree/master-breastfeeding-nursing

Index

01

Introduction

p. 4

02

Objectives

p. 8

03

Skills

p. 14

04

Course Management

p. 18

05

Structure and Content

p. 22

06

Methodology

p. 30

07

Certificate

p. 38

01

Introduction

Studies have confirmed the importance of breastfeeding for the baby's health, and it is recommended for up to 6 months of age and complementary for up to 2 years of age. Relevant information for breastfeeding mothers who may have questions about this process during this period. It is, therefore, a crucial time for both and where nursing professionals play a crucial role by providing comprehensive knowledge from the first feeding to weaning. Given its relevance, this 100% online program has been created to offer the healthcare professional the most recent key elements on women's health care during breastfeeding, the latest news on medication suitable for infants, as well as breastfeeding in maternal-fetal conditions. All this through multimedia teaching material prepared by a specialized teaching team.



A close-up photograph of a baby's chest. A clear plastic breast pump is attached to the baby's chest. The pump has a white circular base and a clear tube. The baby is wearing a blue and white patterned onesie. The background is a soft, out-of-focus light color.

“

This Professional Master's Degree will bring you up to speed with the most up-to-date and scientifically rigorous content from breastfeeding after birth to weaning”

Child obesity is among one of the main concerns of healthcare professionals. Numerous studies focus their attention on the origin and consequences, but some investigate how to prevent it from the moment the child is born. Scientific evidence has shown that breastfeeding prevents this disease in adulthood, highlighting, once again, the benefits of the mother's milk in the baby.

In today's informed society, the role of nursing professionals has become essential in reassuring mothers, dispelling false myths and providing them with exhaustive knowledge based on the latest developments in this field. Given the growing demand and interest of nursing staff in breastfeeding, TECH has designed this Professional Master's Degree, which has brought together a team of top professionals and references in this field.

Thus, through innovative content, in which the latest pedagogical technology has been used, the professional will be able to delve into the evolution of the concept of breastfeeding, the latest techniques and postures, the most appropriate medication at this stage, as well as news on the approach of patients with cancer or special situations in the newborn that make breastfeeding difficult

Professionals will also progress through this syllabus in a much more natural way, thanks to the Relearning system, used by this academic institution in all its programs. It also has case studies that will bring you closer to the reality that you may encounter in your daily clinical practice

As such, students who take this 100% online program have an excellent opportunity to update their knowledge through a quality university education that is compatible with the most demanding responsibilities. You will only need an electronic device (computer, tablet or mobile phone) with an internet connection to access the syllabus on the virtual campus. Classes without fixed schedules means professionals will also be able to distribute the teaching load according to their needs. Therefore, this Professional Master's Degree is an ideal academic option for professionals

This **Professional Master's Degree in Breastfeeding for Nursing** contains the most complete and up-to-date educational program on the market. Its most notable features are:

- ♦ The development of case studies presented by experts in Breastfeeding
- ♦ The graphic, schematic, and practical contents with which they are created, provide scientific and practical information on the disciplines that are essential for professional practice
- ♦ Practical exercises where the self-assessment process can be carried out to improve learning
- ♦ Its special emphasis on innovative methodologies
- ♦ Theoretical lessons, questions to the expert, debate forums on controversial topics, and individual reflection assignments
- ♦ Content that is accessible from any fixed or portable device with an Internet connection



A flexible program giving you the freedom to distribute the teaching load according to your personal needs"

“

Access the clinical case studies on breastfeeding provided by specialists and integrate them into your daily practice”

The program’s teaching staff includes professionals from the sector who contribute their work experience to this training program, as well as renowned specialists from leading societies and prestigious universities.

The multimedia content, developed with the latest educational technology, will provide the professional with situated and contextual learning, i.e., a simulated environment that will provide immersive education programmed to learn in real situations.

This program is designed around Problem-Based Learning, whereby the professional must try to solve the different professional practice situations that arise during the academic year. For this purpose, the student will be assisted by an innovative interactive video system created by renowned and experienced experts.

A qualification that will enable you to learn about the latest developments in infant nutritional needs and complementary feeding.

This 100% online university program will allow you to acquire further knowledge on infant colic, attachment or the kangaroo mother method.



02 Objectives

Nursing professionals enrolled in this program will gain the latest information on breastfeeding and the latest scientific evidence attesting to its extensive benefits for both mother and infant. This way, at the end of this online program, students will be aware of the pathologies that contraindicate breastfeeding, the advances to achieve prolonged breastfeeding and the approach to stress once the mother joins the working market. All this will be much easier thanks to the team of specialized professionals who teach this Professional Master's Degree 100% online.





“

In 12 months you will have all the up-to-date information you are looking for on breastfeeding, its properties and the mechanisms to adapt it to the baby's pathologies"



General Objectives

- ◆ Update knowledge in Breastfeeding
- ◆ Promote work strategies based on a comprehensive approach to care for breastfeeding-conscious mothers as a reference model for achieving excellence in care
- ◆ Encourage the acquisition of technical skills and abilities, through a powerful audiovisual system, and the possibility of development through online simulation workshops and/or specific training
- ◆ Encourage professional stimulation through continuous education and research





Specific Objectives

Module 1. Breastfeeding Today and Throughout History

- ◆ Conduct a review of the current global epidemiology of breastfeeding
- ◆ Foster the proper development of the mother-child relationship, reducing the number of children who are assaulted, abandoned and who fail to progress without organic cause
- ◆ Encourage breastfeeding to achieve adequate growth and development, preventing future health problems

Module 2. Physiology and Clinical History in Breastfeeding

- ◆ Update knowledge about the Physiology of Breastfeeding
- ◆ Describe the anatomy of the lactating breast
- ◆ Define the characteristics of a milk bank

Module 3. Breastfeeding Care and Breastfeeding Women's Health

- ◆ Provide information on nutrition for the breastfeeding mother

Module 4. The Healthy Newborn

- ◆ Explain the benefits of breastfeeding for women's postpartum and long-term recovery
- ◆ Explain the different breastfeeding positions and their indications

Module 5. Problems During Breastfeeding

- ◆ Train mothers in newborn care and in the resolution of common infant health problems
- ◆ Detect bad latching positions of the baby that may alter the development of feeding

Module 6. Other Types of Breastfeeding

- ◆ Explain other types of infant feeding and their substitution or combination with breastfeeding
- ◆ Explain the different bottle preparation techniques and their advantages and disadvantages

Module 7. Breastfeeding in Special Situations

- ◆ Explain the benefits of physical activity during Breastfeeding
- ◆ Describe the main contraindications of breastfeeding

Module 8. Common Situations During Breastfeeding

- ◆ Counsel the mother who works outside the home and wishes to continue breastfeeding
- ◆ Teach the steps to be followed to achieve successful exclusive breastfeeding

Module 9. Drugs and Breastfeeding

- ♦ Obtain knowledge about the transfer of drugs to breast milk in order to guide women in their doubts when taking medications
- ♦ Define appropriate treatment of breast and nipple associated complications

Module 10. Associations of Breastfeeding Initiatives and Legislation

- ♦ Describe paternal involvement in the breastfeeding process
- ♦ Promote active participation in the care of the RN and in the monitoring of its growth and development

Module 11. Diseases and Breastfeeding

- ♦ Debunk false myths and false contraindications regarding breastfeeding
- ♦ Coverage of HIV and Hepatitis condition with respect to breastfeeding
- ♦ Study the possible difficulties of the newborn in special breastfeeding situations
- ♦ Understand the impact of breastfeeding on maternal conditions

Module 12. Maternal Inhibition or Weaning

- ♦ Define strategies to counsel and accompany women who do not wish to breastfeed
- ♦ Explain erroneous beliefs about breastfeeding





“

It provides an engaging insight into the diet and physical activity that a mother should follow during the breastfeeding process”

03 Skills

This Professional Master's Degree has been designed to enhance the skills of nursing professionals in the management of the breastfeeding process starting from the birth of the baby. In addition, it will allow students to expand their counseling skills to mothers, who are faced with difficulties such as mastitis, hypogalactia or the different pathologies that may present in the child and interfere with breastfeeding, such as cleft lips.



“

Multimedia content is available 24 hours a day to keep you up to date on breastfeeding resources”



General Skills

- Describe all the advances regarding breastfeeding in the international panorama
- Act in support of the nursing mother at all stages of the process
- Promote the establishment of successful breastfeeding
- Promote the prolonged maintenance of breastfeeding
- Intervene in special cases of the mother and infant
- Support during the end of the breastfeeding process
- Know about medications and their compatibility with breastfeeding
- Support for the mothers with breastfeeding disorders
- Support for the mother with an infant who is having difficulty or is unable to breastfeed





Specific Skills

- ♦ Describe the historical processes of breastfeeding
- ♦ Use of human milk banks
- ♦ Supporting the woman who does or does not want to breastfeed
- ♦ Describe the benefits of breast milk for the baby
- ♦ Ensure proper latching on and advise on it
- ♦ Teaching correct and incorrect postures
- ♦ Performing a care regimen during pregnancy
- ♦ List the foods that benefit breastfeeding
- ♦ Know what type of exercise is recommended during lactation
- ♦ Describe the nutritional needs of the infant
- ♦ Perform an infant growth curve and interpret it
- ♦ Intervene and advise on infant colic.
- ♦ Know the benefits of skin-to-skin systems
- ♦ Describe the contraindications to breastfeeding
- ♦ Recognize contraindicated maternal pathologies
- ♦ Recognize contraindicated childhood pathologies
- ♦ Know and intervene in breast engorgement
- ♦ Know and intervene in mastitis
- ♦ Know which breastfeeding support devices to use and how to use them
- ♦ Mastering breastfeeding techniques

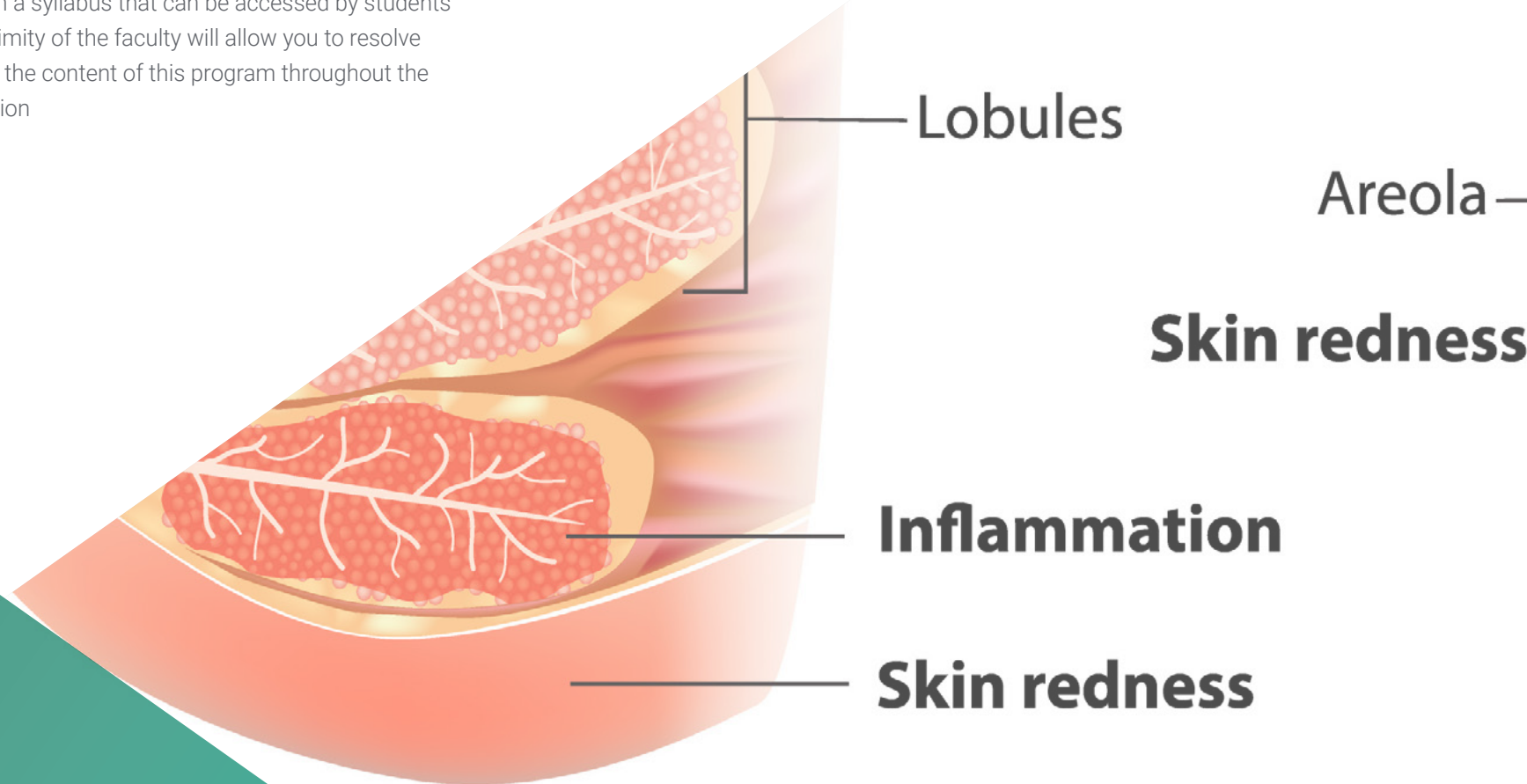


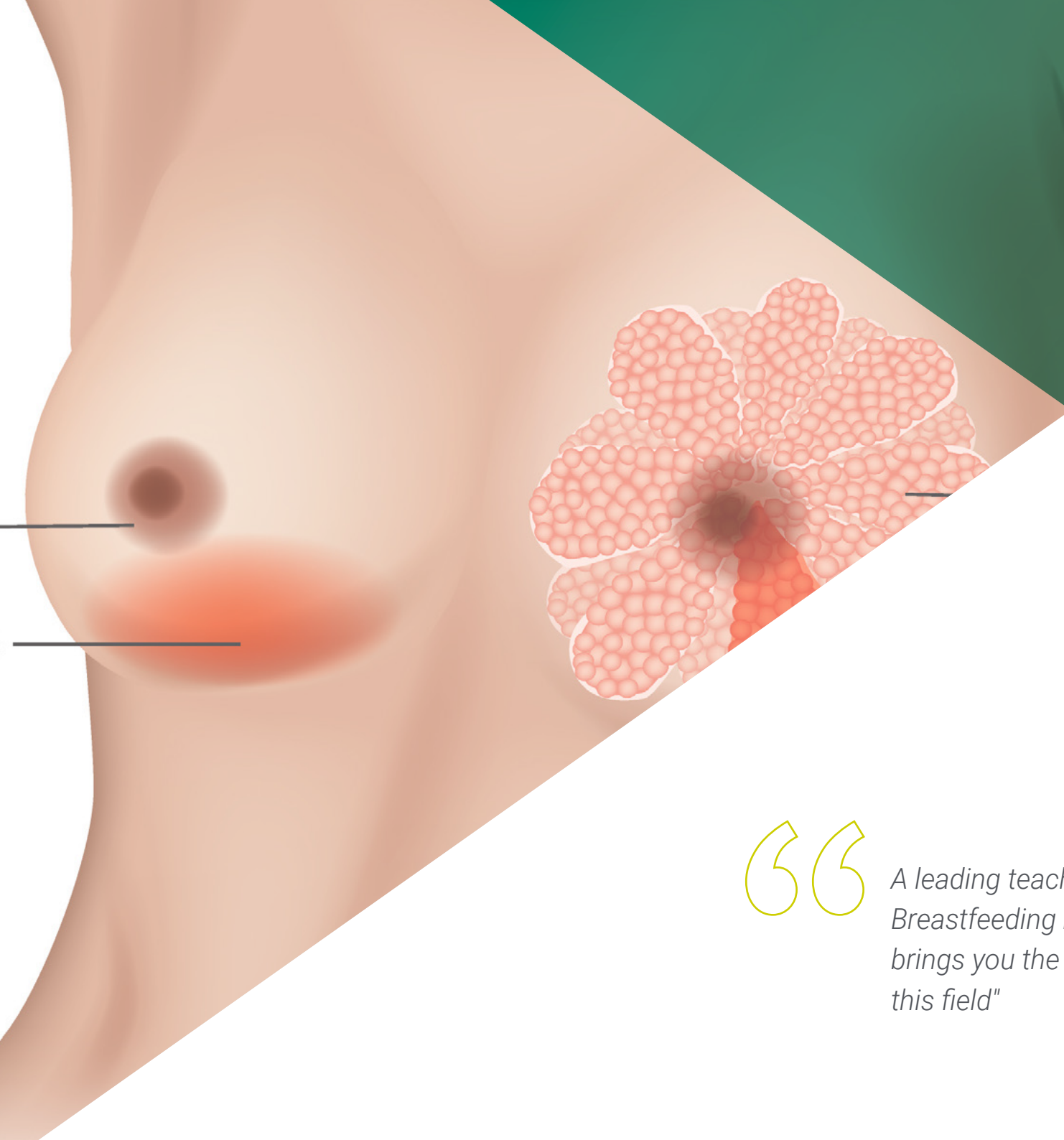
Expand your skills to achieve a successful relactation through the techniques applied today"

04

Course Management

In this Professional Master's Degree, nursing professionals have at their disposal a management and teaching staff that is a reference in its field with professional prestige due to their excellent work in the breastfeeding process. Their advanced knowledge in this field is reflected in a syllabus that can be accessed by students 24 hours a day. In addition, the proximity of the faculty will allow you to resolve any questions that may arise about the content of this program throughout the 12 months of this university education.





“

A leading teaching team in the field of Breastfeeding in relevant hospital centers brings you the latest developments in this field"

Management



Ms. Aguilar Ortega, Juana María

- ◆ Breastfeeding Nurse Coordinator at Hospital 12 de Octubre
- ◆ Neonatal Nurse at the 12 de Octubre Hospital
- ◆ Specialist in Pediatric Nursing by the Ministry of Education, Culture and Sports
- ◆ Clinical practice tutor of Family and Community EIR Madrid
- ◆ Professional Master's Degree in Gender and Health, Rey Juan Carlos University
- ◆ Degree in Nursing from the Complutense University of Madrid

Teachers

Dr. Rodríguez Díaz, Luciano

- ♦ Midwife at the University Hospital of Ceuta
- ♦ Responsible for Perinatal Health: Reproductive Sexual Health and Normal Childbirth of Ingesa
- ♦ Lecturer at the University Centre of Nursing of Ronda
- ♦ Lecturer in the Ceuta Midwifery Teaching Unit
- ♦ SEEUE obstetric-gynecologic emergencies group member
- ♦ Member of the Clinical Commission for Research and Continuing Education of the University Hospital of Ceuta
- ♦ PhD from the University of Granada
- ♦ Diploma in Nursing

Dr. Vázquez Lara, Juana María

- ♦ Nurse of the 061 of Ceuta
- ♦ Midwife in the Ceuta Health Area
- ♦ Head of Studies of the Ceuta Midwifery Teaching Unit
- ♦ Professor of the Ceuta Midwifery Teaching Unit
- ♦ Coordinator of SEEUE obstetric-gynecologic emergencies group
- ♦ Diploma in Nursing
- ♦ PhD from the University of Granada

Ms. Armijo Navarro, Elena

- ♦ Midwife San Sebastián Hospital

D. Carrasco Guerrero, Manuel

- ♦ Midwife Ceuta University Hospital

Ms. De Dios Pérez, María Isabel

- ♦ Midwife. Hospital Universitario de Ceuta

Ms. De la Cabeza Molina Castillo, María

- ♦ Midwife Ceuta University Hospital

Ms. Del Pozo Álvarez, Lidia

- ♦ Midwife Ceuta University Hospital

Ms. Díaz Lozano, Paula

- ♦ Midwife Ceuta University Hospital

Ms. Gómez González, Irene

- ♦ Midwife Ceuta University Hospital

Ms. Hachero Rodríguez, Carmen María

- ♦ Midwife Zaragoza Hospital

05

Structure and Content

Given the relevance of breastfeeding in the mother and baby's health, this Professional Master's Degree has been designed to offer, through an advanced and exhaustive syllabus, the most up-to-date information. For this purpose, the professional has multimedia resources (video summaries, detailed videos, diagrams) and specialized readings that will help them to keep up-to-date with the latest developments in tandem breastfeeding counseling, newborn support or support for women who do not wish to breastfeed. In addition, this program will allow you to delve into recent scientific evidence revealing the multiple benefits of breast milk. All this with a program taught exclusively online and compatible with professional responsibilities.



“

A Professional Master's Degree that takes you through the latest scientific evidence that demonstrates the multiple benefits of breast milk for babies"

Module 1. Breastfeeding Today and Throughout History

- 1.1. Concepts Related to Breastfeeding
 - 1.1.1. Evolution of the Concept of Breastfeeding
 - 1.1.2. Breastfeeding Concepts
- 1.2. History of Breastfeeding
 - 1.2.1. Natural History of Breastfeeding
 - 1.2.2. Historical Development of The Importance of Breastfeeding
- 1.3. Myths
 - 1.3.1. Breastfeeding Misconceptions
 - 1.3.2. Breastfeeding Facts
- 1.4. Care Strategy for Normal Childbirth
 - 1.4.1. Encouraging Breastfeeding after Childbirth
 - 1.4.2. Benefits of Breastfeeding in Childbirth
- 1.5. Epidemiology
 - 1.5.1. Epidemiological Course of Breastfeeding Development
 - 1.5.2. Social Evolution of Breastfeeding
- 1.6. Human Milk Banks
 - 1.6.1. Milk Bank Concept
 - 1.6.2. Characteristics of a Milk Bank
- 1.7. Counseling and Support for Women Who Do Not Wish to Breastfeed
 - 1.7.1. Health Education for Women Do Not Wish to Breastfeed
 - 1.7.2. Specific Information on Care for Non-Lactating Women
- 1.9. Paternal Involvement in Breastfeeding
 - 1.9.1. The Father as a Supporting Figure in Breastfeeding
 - 1.9.2. The Father as a Breastfeeding Consultant
- 1.10. Protection of Breastfeeding Worldwide: WHO Recommendations
 - 1.10.1. WHO Recommendations
 - 1.10.2. Global Protection in Breastfeeding

Module 2. Physiology and Clinical History in Breastfeeding

- 2.1. Anatomy of the Breast
 - 2.1.1. Bone Structure Surrounding the Breast
 - 2.1.2. Muscular Structure of the Breast
- 2.2. Physiology of Breastfeeding
 - 2.2.1. Physiological Development of Breastfeeding
 - 2.2.2. Hormonal Circuit of Breastfeeding
- 2.3. Benefits of Breastfeeding for the Mother
 - 2.3.1. Concept
 - 2.3.2. The Benefits for the Mother in Breastfeeding
- 2.4. Benefits of Breastfeeding for Babies
 - 2.4.1. Concept
 - 2.4.2. Benefits of Breastfeeding in Babies
- 2.5. Evaluation of Intake
 - 2.5.1. Indications on Intake
 - 2.5.2. Inadequate Actions on Intake
- 2.6. Signs of Good and Bad Hitching
 - 2.6.1. The Concept of Latching
 - 2.6.2. Benefits of a Good Latch
- 2.7. Recommended Positions
 - 2.7.1. Proper Breastfeeding Positions
 - 2.7.2. Inadequate Breastfeeding Positions

Module 3. Breastfeeding Care and Breastfeeding Women's Health

- 3.1. First Recommendations during Pregnancy
 - 3.1.1. Evolution of Breastfeeding in Pregnancy
 - 3.1.2. Breastfeeding Care in Pregnancy
- 3.2. Breast Care during Breastfeeding
 - 3.2.1. General Care.
 - 3.2.2. Specific Advice
- 3.3. Proper Techniques for Breastfeeding
 - 3.3.1. Different Breastfeeding Techniques
 - 3.3.2. Incorrect Breastfeeding Measures



- 3.4. Effects of Breastfeeding on Women's Health in the Short Term
 - 3.4.1. Immediate Benefits of Breastfeeding in Women
 - 3.4.2. Positive Breastfeeding Tips
- 3.5. Effects of Breastfeeding on Women's Health in the Mid- and Long-Term
 - 3.5.1. Long-Term Benefits of Breastfeeding
 - 3.5.2. Medium-Term Benefits of Breastfeeding
- 3.6. Maternal Diet and Breastfeeding
 - 3.6.1. Foods that alter Breast Milk
 - 3.6.2. Foods that benefit Breastfeeding
- 3.7. Physical Activity and Breastfeeding
 - 3.7.1. Encouraging Physical Activity During Breastfeeding
 - 3.7.2. Contraindications to Physical Activity During Breastfeeding

Module 4. The Healthy Newborn

- 4.1. Anatomical and Physiological Characteristics
 - 4.1.1. Anatomy of the Newborn
 - 4.1.2. Physiology of the Newborn
- 4.2. Nutritional Requirements of the Infant
 - 4.2.1. Infant Nutrition
 - 4.2.2. Dietary Advice
- 4.3. Growth of Breastfed Infants
 - 4.3.1. WHO Curves
 - 4.3.2. Normality in the Curve
- 4.4. Infantile Colic
 - 4.4.1. Concept
 - 4.4.2. Indications to Avoid Infant Colic
- 4.5. Early Skin-to-skin Contact
 - 4.5.1. The Skin-to-Skin Start
 - 4.5.2. Immediate Skin-to-skin Benefits
- 4.6. First Intake Attachment
 - 4.6.1. Concept of Attachment
 - 4.6.2. Indications of Onset of Contact

- 4.7. Breastfeeding and Kangaroo Mother Method
 - 4.7.1. Kangaroo Method Approach
 - 4.7.2. Start of the Technique
- 4.8. Nipples and Pacifiers During Breastfeeding
 - 4.8.1. Description of Nipples and Pacifiers
 - 4.8.2. Precautions for Nipples and Pacifiers

Module 5. Problems During Breastfeeding

- 5.1. Contraindications for Breastfeeding
 - 5.1.1. Situations that Contraindicate Breastfeeding
 - 5.1.2. Nutritional
- 5.2. Maternal Pathologies that Contraindicate Breastfeeding
 - 5.2.1. List Maternal Pathologies that Contraindicate Breastfeeding
 - 5.2.2. Counseling on Contraindications to Breastfeeding
- 5.3. Newborn Pathologies that Contraindicate Breastfeeding
 - 5.3.1. List Neonatal Pathologies that Contraindicate Breastfeeding
 - 5.3.2. Counseling on Contraindications to Breastfeeding
- 5.4. Nipple Problems
 - 5.4.1. Different Types of Nipples
 - 5.4.2. Support for the Mother
- 5.5. Mammary Ingurgitation
 - 5.5.1. Concept
 - 5.5.2. Adequate Treatment
- 5.6. Mastitis
 - 5.6.1. Concept
 - 5.6.2. Adequate Treatment
- 5.7. Aids and Devices to Assist in Breastfeeding
 - 5.7.1. Different Breastfeeding Devices
 - 5.7.2. How to Help Breastfeeding?

Module 6. Other Types of Breastfeeding

- 6.1. Artificial Breastfeeding
 - 6.1.1. Concept
 - 6.1.2. Development of the Technique
- 6.2. Formula Milk: Handling and Disadvantages
 - 6.2.1. Formula Milk Preparation
 - 6.2.2. Benefits and Drawbacks
- 6.3. Preparation of a Baby Bottle
 - 6.3.1. Technique for Preparing a Baby Bottle
 - 6.3.2. Sterilizing Baby Bottles
- 6.4. Mixed Breastfeeding
 - 6.4.1. Concept
 - 6.4.2. How to Carry It Out
- 6.5. Relactation
 - 6.5.1. Concept
 - 6.5.2. Indications
- 6.6. Combination of Breastfeeding with Nutrition
 - 6.6.1. Complementary Nutrition
 - 6.6.2. Nutritional Needs

Module 7. Breastfeeding in Special Situations

- 7.1. Hypogalactia
 - 7.1.1. Concept
 - 7.1.2. Treatment Measures
- 7.2. Sick Newborns
 - 7.2.1. Different Pathologies
 - 7.2.2. Breastfeeding in Children with Pathologies
- 7.3. Prematurity
 - 7.3.1. Definition of Prematurity
 - 7.3.2. Breastfeeding in Premature Infants

- 7.4. Teenage Mothers
 - 7.4.1. Breastfeeding in Teenage Mothers
 - 7.4.2. Problems in Teenage Mothers
- 7.5. Breastfeeding and LAM
 - 7.5.1. Concept
 - 7.5.2. LAM Method Benefits
- 7.6. Cleft Lip and Lip Malformations
 - 7.6.1. Concept
 - 7.6.2. Support for Newborns and Breastfeeding Mothers
- 7.7. Breastfeeding and New Pregnancy
 - 7.7.1. Tandem Breastfeeding
 - 7.7.2. Nutritional
- 7.8. Breastfeeding and Stress
 - 7.8.1. Stress as a Detriment to Breastfeeding
 - 7.8.2. Measures to Cope with Stress

Module 8. Common Situations During Breastfeeding

- 8.1. Crying and Breast Refusal
 - 8.1.1. Concept
 - 8.1.2. Immediate Attention
- 8.2. Breastfeeding Strike
 - 8.2.1. Concept
 - 8.2.2. Strike Counseling
- 8.3. Prolonged and Tandem Breastfeeding
 - 8.3.1. Concept
 - 8.3.2. Benefits
- 8.4. Co-Sleeping
 - 8.4.1. Concept
 - 8.4.2. Benefits of Co-sleeping
- 8.5. Working Outside the Home and Breastfeeding
 - 8.5.1. Incorporation into Work
 - 8.5.2. Support in this Situation

- 8.6. Milk Extraction: Methods and Tools
 - 8.6.1. Parts of the Breast Pump
 - 8.6.2. Use of the Breast Pump
- 8.7. Transport and Storage of Breast Milk
 - 8.7.1. Milk Storage Mechanisms
 - 8.7.2. Milk Transport

Module 9. Drugs and Breastfeeding

- 9.1. Transfer of Drugs and Other Elements into Breast Milk
 - 9.1.1. Concept
 - 9.1.2. Medication Administration Contraindications
- 9.2. Drug Interaction and Breastfeeding
 - 9.2.1. Drug Interaction
 - 9.2.2. Medication administration
- 9.3. Most Commonly Used Drugs During Breastfeeding
 - 9.3.1. Drugs Indicated for Breastfeeding
 - 9.3.2. Indications
- 9.4. Web-Based Resources and Tools on Drugs and Breastfeeding
 - 9.4.1. The Web on Breastfeeding and Drugs
 - 9.4.2. How to Search Online?
- 9.5. Harmful Substances and Breastfeeding
 - 9.5.1. Different Harmful Substances in Breastfeeding
 - 9.5.2. Attitude Towards the Ingestion of Harmful Substances

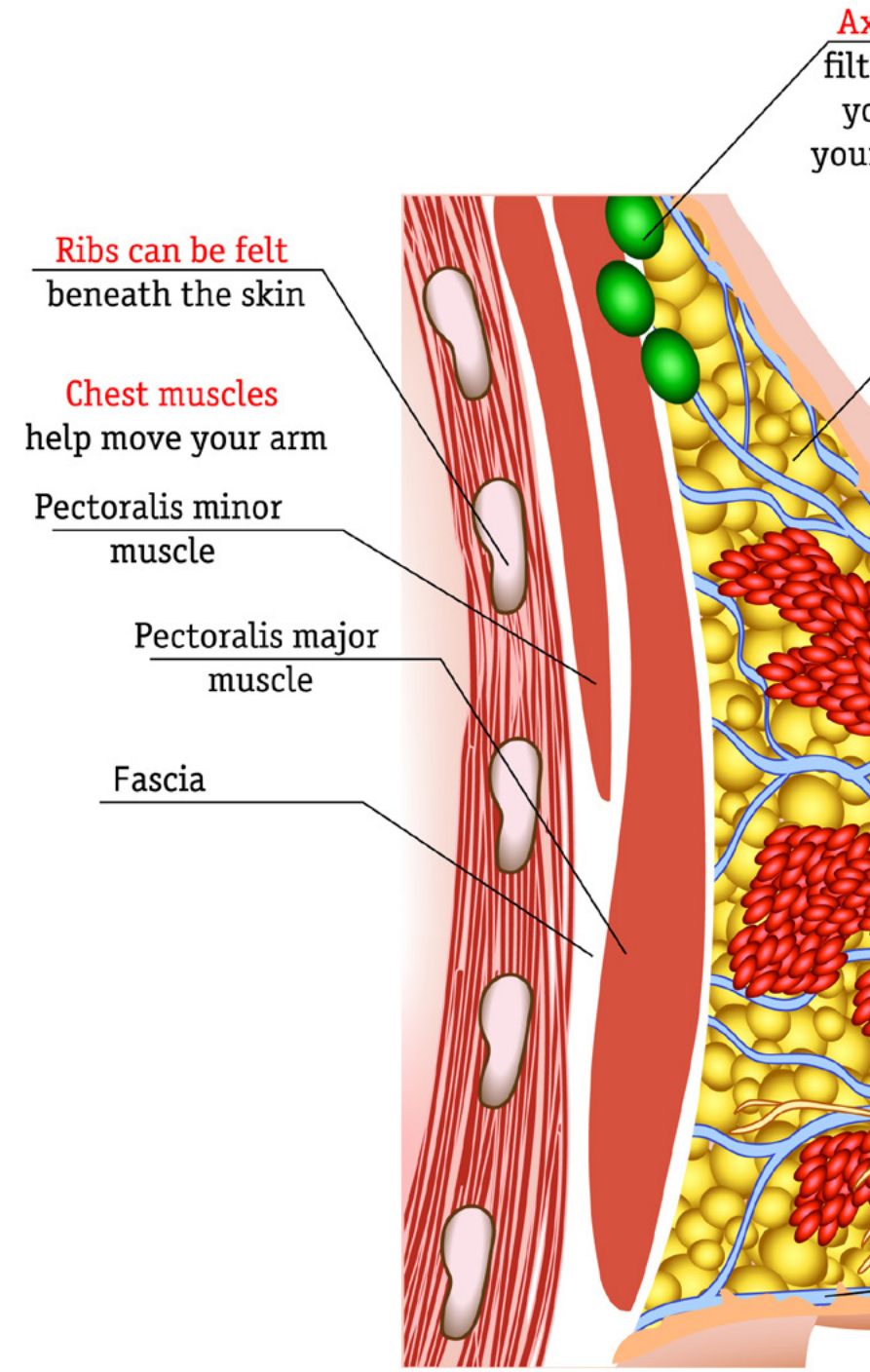
Module 10. Breastfeeding Associations Initiatives and Legislation

- 10.1. Support Groups
 - 10.1.1. Concept
 - 10.1.2. Different Support Groups
- 10.2. Lactation Consultants
 - 10.2.1. Concept of Consultants
 - 10.2.2. Consultant's Roles

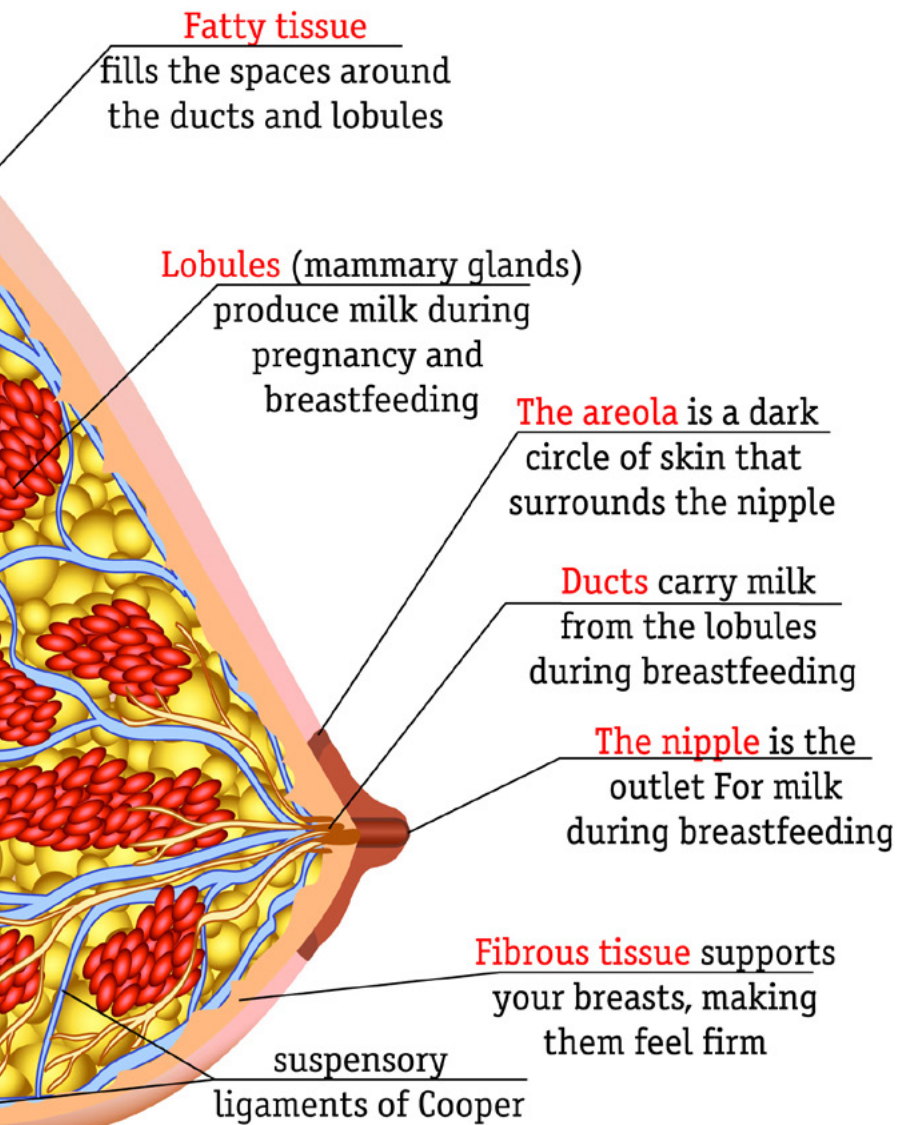
- 10.3. Innocenti Declaration
 - 10.3.1. Protecting Breastfeeding Globally
 - 10.3.2. Protection Treaty
- 10.4. WHO Baby-Friendly Hospital Initiative (BFHI)
 - 10.4.1. Characteristics of the Initiative
 - 10.4.2. Objectives to be Met
- 10.6. Recommended Websites
 - 10.6.1. Online Consultations
 - 10.6.2. Web Credibility

Module 11. Diseases and Breastfeeding

- 11.1. Concept
 - 11.1.1. Definition of Diseases and Breastfeeding
 - 11.1.2. Performance
- 11.2. Absolute and False Contraindications
 - 11.2.1. Contraindications
 - 11.2.2. Myths
- 11.3. HIV and Breastfeeding
 - 11.3.1. Concept
 - 11.3.2. Indications for Breastfeeding
- 11.4. Hepatitis and Breastfeeding
 - 11.4.1. Concept
 - 11.4.2. Indications for Breastfeeding
- 11.5. Oncological Processes and Breastfeeding
 - 11.5.1. Cancer and Breastfeeding
 - 11.5.2. Indications for Oncologic Process and Breastfeeding Mother
- 11.6. Special Situations in the Newborn that make Breastfeeding Difficult
 - 11.6.1. Newborn Special Situations
 - 11.6.2. Mechanisms for Adapting Special Situations and Breastfeeding
- 11.7. How to Promote Breastfeeding in Maternal-Fetal Conditions?
 - 11.7.1. Concept
 - 11.7.2. Encourage Breastfeeding In Situ



axillary lymph nodes
filter lymph fluid from
your breast and help
your body fight infection



Module 12. Maternal Inhibition or Weaning

- 12.1. Concept and Types
 - 12.1.1. Types of Inhibition
 - 12.1.2. Mechanism for Progressive Weaning
- 12.2. Physiology of Breastfeeding Inhibition
 - 12.2.1. Physiology of Inhibition
 - 12.2.2. Indications to Inhibit Breastfeeding
- 12.3. Ways to Speed Weaning
 - 12.3.1. How and When to Wean
 - 12.3.2. How to Start Progressive Weaning?
- 12.4. Prolonged Breastfeeding
 - 12.4.1. Concept
 - 12.4.2. Benefits and Detriments
- 12.5. Medications Associated with Breastfeeding Inhibition
 - 12.5.1. Medication for Inhibition
 - 12.5.2. Indications
- 12.6. Entering Labor Market
 - 12.6.1. Stressful Situation on Incorporation
 - 12.6.2. Advice and Assistance



A 100% online program that allows you to update your knowledge on the most suitable medication for breastfeeding mothers"

06

Methodology

This academic program offers students a different way of learning. Our methodology uses a cyclical learning approach: **Relearning**.

This teaching system is used, for example, in the most prestigious medical schools in the world, and major publications such as the **New England Journal of Medicine** have considered it to be one of the most effective.



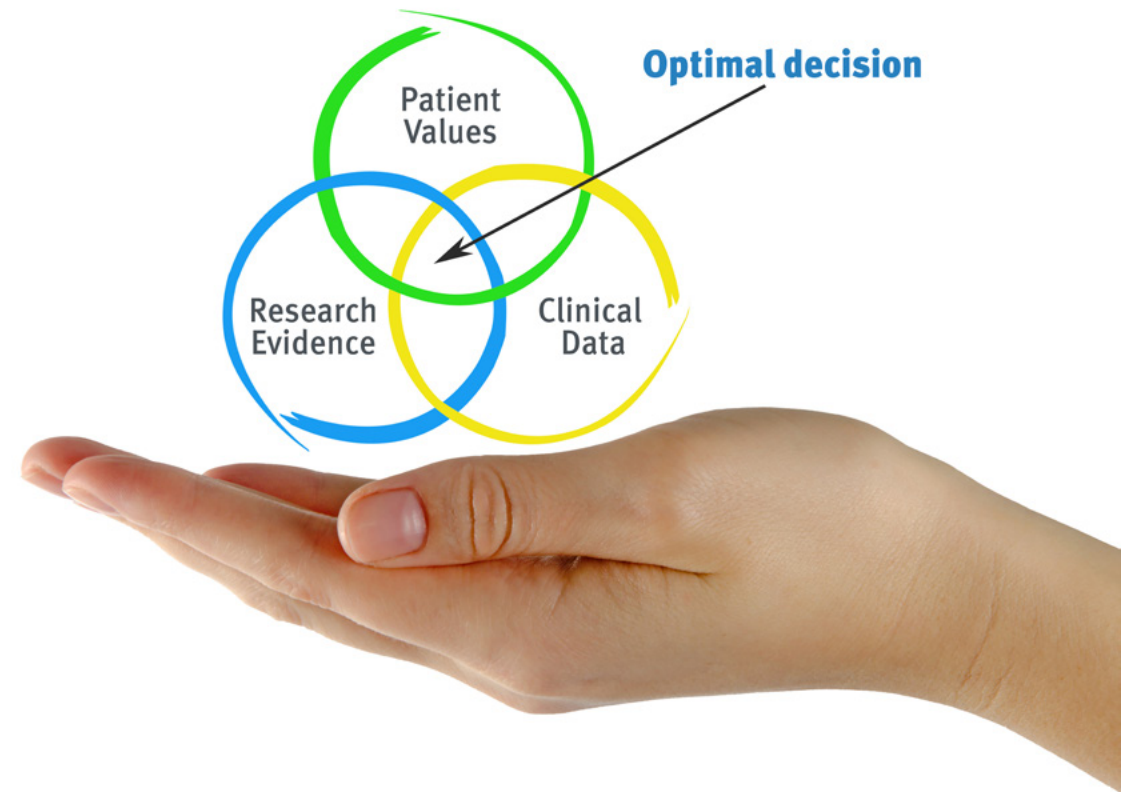
“

Discover Relearning, a system that abandons conventional linear learning, to take you through cyclical teaching systems: a way of learning that has proven to be extremely effective, especially in subjects that require memorization"

At TECH Nursing School we use the Case Method

In a given situation, what should a professional do? Throughout the program, students will face multiple simulated clinical cases, based on real patients, in which they will have to do research, establish hypotheses, and ultimately resolve the situation. There is an abundance of scientific evidence on the effectiveness of the method. Nurses learn better, faster, and more sustainably over time.

With TECH, nurses can experience a learning methodology that is shaking the foundations of traditional universities around the world.



According to Dr. Gérvas, the clinical case is the annotated presentation of a patient, or group of patients, which becomes a "case", an example or model that illustrates some peculiar clinical component, either because of its teaching power or because of its uniqueness or rarity. It is essential that the case is based on current professional life, in an attempt to recreate the real conditions in professional nursing practice.

“

Did you know that this method was developed in 1912, at Harvard, for law students? The case method consisted of presenting students with real-life, complex situations for them to make decisions and justify their decisions on how to solve them. In 1924, Harvard adopted it as a standard teaching method”

The effectiveness of the method is justified by four fundamental achievements:

1. Nurses who follow this method not only grasp concepts, but also develop their mental capacity, by evaluating real situations and applying their knowledge.
2. The learning process has a clear focus on practical skills that allow the nursing professional to better integrate knowledge acquisition into the hospital setting or primary care.
3. Ideas and concepts are understood more efficiently, given that the example situations are based on real-life.
4. Students like to feel that the effort they put into their studies is worthwhile. This then translates into a greater interest in learning and more time dedicated to working on the course.



Relearning Methodology

At TECH we enhance the case method with the best 100% online teaching methodology available: Relearning.

This university is the first in the world to combine case studies with a 100% online learning system based on repetition combining a minimum of 8 different elements in each lesson, which is a real revolution compared to the simple study and analysis of cases.



The nurse will learn through real cases and by solving complex situations in simulated learning environments. These simulations are developed using state-of-the-art software to facilitate immersive learning.

At the forefront of world teaching, the Relearning method has managed to improve the overall satisfaction levels of professionals who complete their studies, with respect to the quality indicators of the best online university (Columbia University).

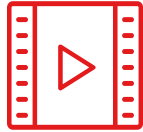
With this methodology we have trained more than 175,000 nurses with unprecedented success in all specialities regardless of practical workload. Our pedagogical methodology is developed in a highly competitive environment, with a university student body with a strong socioeconomic profile and an average age of 43.5 years old.

Relearning will allow you to learn with less effort and better performance, involving you more in your specialization, developing a critical mindset, defending arguments, and contrasting opinions: a direct equation to success.

In our program, learning is not a linear process, but rather a spiral (learn, unlearn, forget, and re-learn). Therefore, we combine each of these elements concentrically. The overall score obtained by TECH's learning system is 8.01, according to the highest international standards.



This program offers the best educational material, prepared with professionals in mind:



Study Material

All teaching material is produced by the specialists who teach the course, specifically for the course, so that the teaching content is really specific and precise.

These contents are then applied to the audiovisual format, to create the TECH online working method. All this, with the latest techniques that offer high quality pieces in each and every one of the materials that are made available to the student.



Nursing Techniques and Procedures on Video

We introduce you to the latest techniques, to the latest educational advances, to the forefront of current medical techniques. All of this in direct contact with students and explained in detail so as to aid their assimilation and understanding. And best of all, you can watch them as many times as you want.



Interactive Summaries

The TECH team presents the contents attractively and dynamically in multimedia lessons that include audio, videos, images, diagrams, and concept maps in order to reinforce knowledge.

This exclusive educational system for presenting multimedia content was awarded by Microsoft as a "European Success Story".



Additional Reading

Recent articles, consensus documents and international guidelines, among others. In TECH's virtual library, students will have access to everything they need to complete their course.





Expert-Led Case Studies and Case Analysis

Effective learning ought to be contextual. Therefore, TECH presents real cases in which the expert will guide students, focusing on and solving the different situations: a clear and direct way to achieve the highest degree of understanding.



Testing & Retesting

We periodically evaluate and re-evaluate students' knowledge throughout the program, through assessment and self-assessment activities and exercises, so that they can see how they are achieving their goals.



Classes

There is scientific evidence suggesting that observing third-party experts can be useful.

Learning from an Expert strengthens knowledge and memory, and generates confidence in future difficult decisions.



Quick Action Guides

TECH offers the most relevant contents of the course in the form of worksheets or quick action guides. A synthetic, practical, and effective way to help students progress in their learning.



07

Certificate

The Professional Master's Degree in Breastfeeding for Nursing guarantees you, in addition to the most rigorous and updated training, access to a Professional Master's Degree issued by TECH Global University.



“

*Successfully complete this program
and receive your university degree
without travel or laborious paperwork”*

This private qualification will allow you to obtain a **Professional Master's Degree diploma in Breastfeeding for Nursing** endorsed by **TECH Global University**, the world's largest online university.

TECH Global University is an official European University publicly recognized by the Government of Andorra ([official bulletin](#)). Andorra is part of the European Higher Education Area (EHEA) since 2003. The EHEA is an initiative promoted by the European Union that aims to organize the international training framework and harmonize the higher education systems of the member countries of this space. The project promotes common values, the implementation of collaborative tools and strengthening its quality assurance mechanisms to enhance collaboration and mobility among students, researchers and academics.

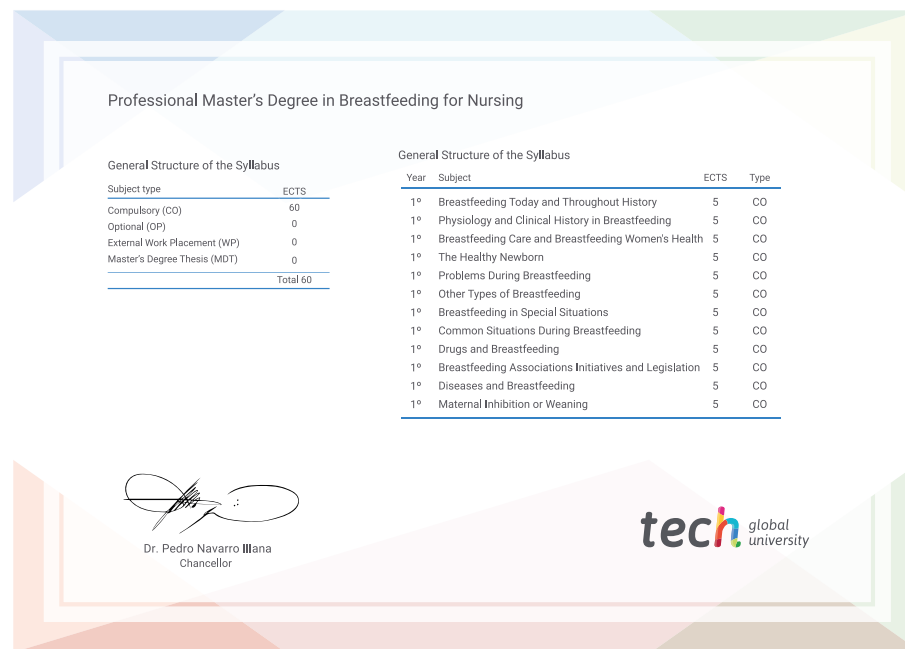
This **TECH Global University** private qualification is a European program of continuing education and professional updating that guarantees the acquisition of competencies in its area of knowledge, providing a high curricular value to the student who completes the program.

Title: **Professional Master's Degree in Breastfeeding for Nursing**

Modality: **online**

Duration: **12 months**

Accreditation: **60 ECTS**



*Apostille Convention. In the event that the student wishes to have their paper diploma issued with an apostille, TECH Global University will make the necessary arrangements to obtain it, at an additional cost.



Professional Master's Degree Breastfeeding for Nursing

- » Modality: online
- » Duration: 12 months
- » Certificate: TECH Global University
- » Credits: 60 ECTS
- » Schedule: at your own pace
- » Exams: online

Professional Master's Degree Breastfeeding for Nursing

