

# Postgraduate Diploma

## Palliative Care in Oncology Patients for Nursing





## Postgraduate Diploma Palliative Care in Oncology Patients for Nursing

- » Modality: online
- » Duration: 6 months
- » Certificate: TECH Global University
- » Credits: 18 ECTS
- » Schedule: at your own pace
- » Exams: online

Website: [www.techtitute.com/us/nursing/postgraduate-diploma/postgraduate-diploma-palliative-care-oncology-patients-nursing](http://www.techtitute.com/us/nursing/postgraduate-diploma/postgraduate-diploma-palliative-care-oncology-patients-nursing)

# Index

01

Introduction

---

*p. 4*

02

Objectives

---

*p. 8*

03

Course Management

---

*p. 12*

04

Structure and Content

---

*p. 16*

05

Methodology

---

*p. 22*

06

Certificate

---

*p. 30*

# 01

# Introduction

Faced with the increasing prevalence of Cancer worldwide, Nursing plays a crucial role in the administration of palliative care, which not only seeks to alleviate pain and other physical symptoms, but also to address psychological, social and spiritual needs. That is why ongoing specialization in effective communication techniques, pain and symptom management associated with Cancer, as well as ethical and emotional support issues, is essential for Nurses to provide comprehensive and personalized care. This 100% online program has been created by highly specialized and experienced experts in palliative care, based on the innovative Relearning methodology, which is a pioneer in TECH.



“

*With this 100% online Postgraduate Diploma, you will develop advanced skills in the assessment and management of pain, symptoms and psychosocial problems associated with Cancer"*

Nursing professionals play a fundamental role in pain management, symptom control and improving the patient's quality of life at all stages of the disease. In fact, the person-centered approach and holistic care are fundamental pillars in the provision of palliative care, where Nursing plays an essential role in relieving suffering and promoting well-being in this vulnerable population.

In this context, a Postgraduate Diploma is born, which will focus on familiarizing the nurse with the functioning of Oncology services, providing a comprehensive understanding of how these services operate within the healthcare system. In addition, a detailed review of the different types of Cancer, classified by apparatus and systems, will be addressed, allowing to identify and understand the specific characteristics and management needs of each type of Cancer.

Likewise, professionals will delve into the anatomy of pain and the methodologies for its exploration and evaluation, which is fundamental for an effective management. In this way, not only conventional pain treatments will be covered, but also alternative and innovative techniques, offering a broader and more updated perspective on the treatment options available.

Finally, graduates will be immersed in the management and care of palliative patients, including knowledge and application of the standardized languages NIC (Nursing Interventions) and NOC (Nursing Outcomes). In addition, they will be able to apply various assessment scales to adequately assess patients' needs and progress.

Therefore, TECH has implemented a complete and fully online program, which offers flexibility and adjusts to the specific needs of the students. In this sense, to access the educational material, they will only need a device with an Internet connection. In addition, it incorporates the innovative Relearning methodology, which emphasizes the repetition of key concepts for a deep and natural assimilation of the content.

This **Postgraduate Diploma in Palliative Care in Oncology Patients for Nursing** contains the most complete and up-to-date scientific program on the market. The most important features include:

- ♦ Practical cases presented by experts in Palliative Care in Oncology Patients for Nursing.
- ♦ The graphic, schematic and practical contents with which it is conceived gather scientific and practical information on those disciplines that are essential for professional practice.
- ♦ Practical exercises where the self-assessment process can be carried out to improve learning.
- ♦ Its special emphasis on innovative methodologies
- ♦ Theoretical lessons, questions to the expert, debate forums on controversial topics, and individual reflection assignments
- ♦ Content that is accessible from any fixed or portable device with an Internet connection.



*The interdisciplinary approach of this program will allow you to understand the complexity of the physical, emotional, social and spiritual needs of patients and their families"*



“

*You will be able to apply a variety of strategies to relieve pain and improve the quality of life of oncology patients in advanced stages, through the best didactic materials, at the technological and educational forefront"*

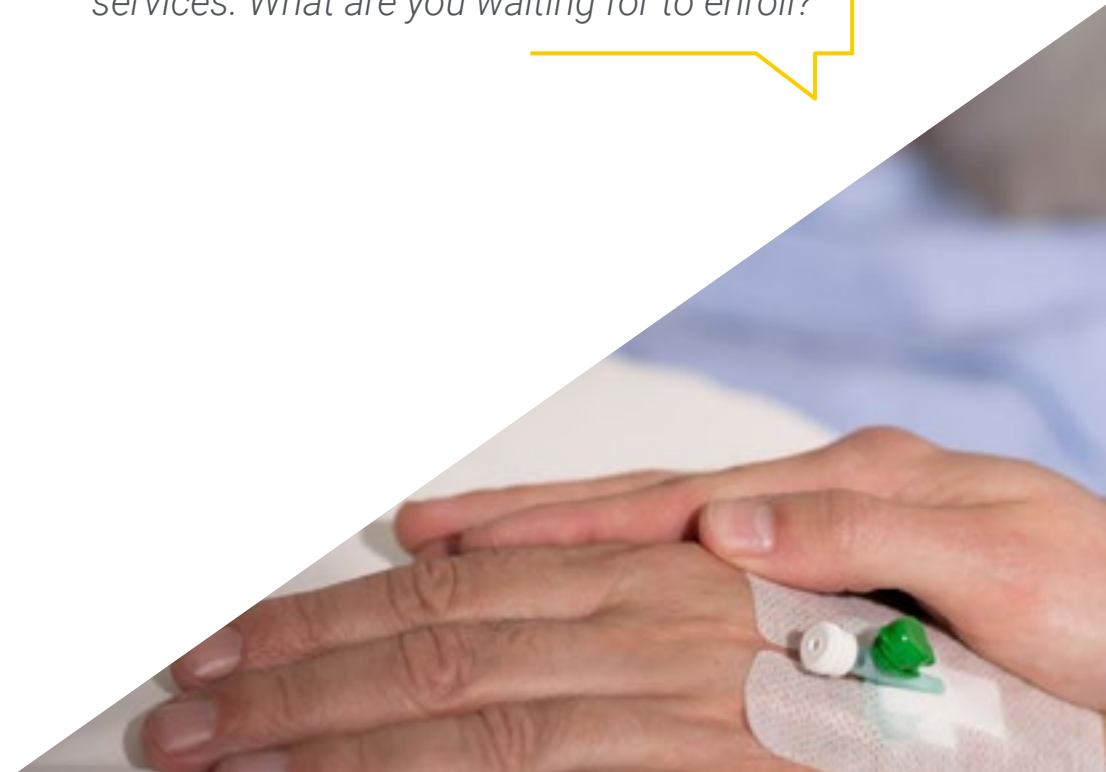
The program's teaching staff includes professionals from the sector who contribute their work experience to this specializing program, as well as renowned specialists from leading societies and prestigious universities.

The multimedia content, developed with the latest educational technology, will provide the professional with situated and contextual learning, i.e., a simulated environment that will provide immersive education programmed to learn in real situations.

This program is designed around Problem-Based Learning, whereby the professional must try to solve the different professional practice situations that arise during the course. For this purpose, students will be assisted by an innovative interactive video system created by renowned and experienced experts.

*You will master advanced techniques in the care of complex ulcers and the management of endovenous and subcutaneous pumps, expanding your competencies to apply treatments that can be vital in the management of symptoms.*

*You will deepen your knowledge of cancer as a disease, including its pathophysiology, types by systems and the functioning of oncology services. What are you waiting for to enroll?*



# 02 Objectives

The main objective of the Postgraduate Diploma will be to enable nurses to provide specialized and compassionate care to Cancer patients in advanced stages of their disease. Therefore, it will provide profound knowledge of Cancer and its different manifestations, as well as the advanced management of pain and other complex symptoms. It will also focus on equipping professionals with the practical and technical skills necessary to improve the quality of life of patients and their families, promoting person-centered care.





“

*You will upgrade your communication and ethical decision-making to meet the challenges of palliative care, ensuring comprehensive and respectful care in the context of advanced illness”*



## General Objectives

---

- ♦ Have a solid understanding of the fundamentals and models of care in Palliative Care, as well as aspects such as epidemiology or pathophysiology of chronic diseases
- ♦ Enhance clinical skills for the comprehensive assessment of patients, including the management of complex symptoms and the approach to total suffering
- ♦ Adopt an individualized approach to care, focusing on both the preferences and values of users, respecting their autonomy at all stages of pathology
- ♦ Obtain empathetic and effective communication skills with both affected individuals and their families
- ♦ Apply knowledge of specific nutrition to improve prognosis and reduce complications in patients with advanced disease
- ♦ Keep abreast of innovations in matters such as diagnostic and therapeutic techniques most relevant to the follow-up of palliative patients



*You will strengthen your ability to manage pain, control symptoms, apply specific nursing procedures, and provide empathetic and compassionate companionship"*





## Specific Objectives

---

### Module 1. Palliative Care in Oncology Patients

- ◆ Understand the functioning of the Oncology services
- ◆ Know the different types of Cancer by apparatus and systems

### Module 2. Pain Treatment

- ◆ Delve into the knowledge of pain
- ◆ Analyze conventional treatments
- ◆ Provide patients with information about their pain condition, as well as self-regulation and self-care strategies to manage it effectively
- ◆ Investigate alternative and innovative techniques for implementation in clinical practice

### Module 3. Palliative Care Nursing Procedures

- ◆ Know the importance of nursing in the management and care of palliative patients
- ◆ Know the ICN and NOTC
- ◆ Know how to apply assessment scales to palliative patients
- ◆ Discover the new techniques in complex ulcer care
- ◆ Know nursing techniques with therapeutic potential
- ◆ Delve into the management of endovenous and subcutaneous pumps



03

# Course Management

The faculty is composed of highly qualified and experienced professionals in palliative care and oncology. Therefore, this team will share updated theory and practice, as well as share real experiences and clinical cases that will enrich learning, preparing graduates to face the daily challenges in the care of terminal oncology patients and ensuring superior quality specialization. In addition, its interdisciplinary approach will provide a comprehensive perspective, which will prepare nursing professionals to face the challenges and demands of this area of health care with excellence and compassion.





“

*The commitment of the faculty is reflected in the transmission of the latest scientific advances, innovative techniques and best practices in the care of oncology patients”*

## Management



### Dr. Lafuente Sanchis, Manuel Pablo

- ♦ Head of the Home Hospitalization and Palliative Care Service at La Ribera University Hospital, Valencia
- ♦ Specialist in Family and Community Medicine at the Virgen de los Lirios Hospital, Alcoy
- ♦ Clinical Simulation Instructor, Catholic University of Murcia
- ♦ University Professor in Nursing Studies
- ♦ Expert in Palliative Care, International University of La Rioja
- ♦ University Expert in University Teaching from the Catholic University of Valencia
- ♦ Degree in Medicine and Surgery from the University of Valencia
- ♦ Member of: Spanish Society of Home Hospitalization and Spanish Society of Clinical Simulation

## Professors

### Dr. Santander López, Jorge

- ♦ Assistant Physician of the Home Hospitalization and Palliative Care Unit at La Fe Hospital
- ♦ Specialist in Family and Community Medicine
- ♦ Specialist in Home Hospitalization and Palliative Care
- ♦ Degree in Medicine and Surgery from the University of Mendoza, Argentina
- ♦ University Expert in Pain

### Dr. Vila Herranz, Mireia

- ♦ Nurse Case Manager in La Ribera University Hospital
- ♦ Home Hospitalization Nurse in La Ribera University Hospital
- ♦ Emergency Nurse at La Ribera University Hospital
- ♦ Diploma in Nursing from the Catholic University of Valencia



**Dr. Martín Marco, Antonio**

- ◆ Internal Medicine Specialist at Arnau de Vilanova Hospital, Valencia
- ◆ Attending Physician in the Home Hospitalization and Palliative Care Unit
- ◆ Head of Teaching and Research in the Palliative Care in Unit
- ◆ Master's Degree in Emergency Medical Care
- ◆ Master's Degree in Emergency Medical Care
- ◆ Degree in Medicine and Surgery from the University of Zaragoza
- ◆ Member of: Spanish Society of Medical Oncology and Spanish Society of Internal Medicine

**Ms. Sanchís Aguilar, Paula**

- ◆ Nurse in Home Hospitalization and Palliative Care Unit of La Ribera University Hospital
- ◆ Nurse at Solimar Tavernes Nursing Home
- ◆ Case Manager of Complex Chronic Patients at the Valencian School of Health Studies (EVES)
- ◆ University Diploma in Nursing from the University of Valencia

**Dr. Esparza Chust, Miryam Pau**

- ◆ Nurse in the Home Hospitalization Unit at La Ribera University Hospital
- ◆ Specialist in Internal Medicine Hospitalization
- ◆ Master's Degree in School Health Education from the University of Valencia.
- ◆ Diploma in Nursing from the University of Valencia
- ◆ Regular speaker at Health Congresses such as the "XI Jornada de la Sociedad Valenciana de Hospitalización a Domicilio" (XI Conference of the Valencian Society of Home Hospitalization)

**Dr. Tarraso Gómez, Luisa**

- ◆ Assistant Physician of the Home Hospitalization and Palliative Care Unit of La Ribera University Hospital
- ◆ Specialist Physician of the Pain Unit of La Ribera University Hospital
- ◆ Specialist in Family and Community Medicine. Residency at Dr. Peset Hospital
- ◆ Master's Degree in Palliative Care from the University of Valladolid
- ◆ Degree in Medicine and Surgery from the University of Valencia
- ◆ Member of: Valencian Society of Home Hospitalization and Palliative Group of the Spanish Multidisciplinary Society of Pain



*A unique, key, and decisive educational experience to boost your professional development"*

# 04

## Structure and Content

The program will include, from the detailed study of cancer, classification by type and understanding its impact on the body's systems and apparatuses, to advanced and up-to-date methods for the management of pain and other debilitating symptoms. It will also focus on practical skills and specific nursing procedures, such as infusion pump management and complex ulcer care, as well as the implementation of specialized assessment scales for palliative patients.



“

*You will delve into specific Nursing procedures for the care of palliative patients, highlighting the importance of the nursing role, the management of assessment scales and the application of advanced techniques”*

## Module 1. Palliative Care in Oncology Patients

- 1.1. Biology and Cancer Epidemiology
  - 1.1.1. Epidemiology
  - 1.1.2. Genetic and Environmental Factors
  - 1.1.3. Evolution Over the Years
  - 1.1.4. Chronification of Cancer
- 1.2. Medical oncology
  - 1.2.1. Development of the Specialty
  - 1.2.2. Organization
  - 1.2.3. Expectations for the Future
- 1.3. Anti-cancer Treatments
  - 1.3.1. Chemotherapy
  - 1.3.2. Radiotherapy
  - 1.3.3. Immunotherapy
- 1.4. Cancer-related Syndromes
  - 1.4.1. Hypercalcemia
  - 1.4.2. Vena Cava Syndrome
  - 1.4.3. Oral complications
  - 1.4.4. Paraneoplastic Syndromes
  - 1.4.5. Coagulation Disorders
- 1.5. Respiratory Cancer
  - 1.5.1. Most Common Types
  - 1.5.2. Treatment
  - 1.5.3. Frequent Complications
- 1.6. ORL Cancer
  - 1.6.1. Most Common Types
  - 1.6.2. Treatment
  - 1.6.3. Frequent Complications
- 1.7. Breast and Genitourinary Cancer
  - 1.7.1. Most Common Types
  - 1.7.2. Treatment
  - 1.7.3. Frequent Complications

- 1.8. Digestive Cancer
  - 1.8.1. Most Common Types
  - 1.8.2. Treatment
  - 1.8.3. Frequent Complications
- 1.9. Neurological Cancer
  - 1.9.1. Most Common Types
  - 1.9.2. Treatment
  - 1.9.3. Frequent Complications
- 1.10. Hematologic Cancer
  - 1.10.1. Most Common Types
  - 1.10.2. Treatment
  - 1.10.3. Frequent Complications

## Module 2. Pain Treatment

- 2.1. Pain in Palliative Care
  - 2.1.1. Approach to Pain in Palliative Care
  - 2.1.2. Epidemiology
  - 2.1.3. Most Common Types of Pain in Palliative Care Patients
- 2.2. Anatomy of Pain
  - 2.2.1. Topographic Atlas
  - 2.2.2. Pain Pathways
- 2.3. Classification
  - 2.3.1. According to Duration
  - 2.3.2. According to Origin
  - 2.3.3. According to Severity
  - 2.3.4. According to Pathophysiology
- 2.4. Pain assessment and Diagnosis
  - 2.4.1. Anamnesis and Examination
  - 2.4.2. Scales and Algorithms
  - 2.4.3. Imaging Techniques





- 2.5. Pharmacological Treatment of Pain in the Palliative Patient
  - 2.5.1. Usual Pharmacological Treatment
  - 2.5.2. Pharmacological Treatment of the Most Frequent Comorbidities: IR, CHF, Hepatic Insufficiency, Cognitive Impairment
  - 2.5.3. Opioid Rotation
- 2.6. Non-Pharmacological Treatment
  - 2.6.1. Physical Therapy
  - 2.6.2. Radiotherapy
  - 2.6.3. Rehabilitation
- 2.7. Pain in the Palliative Oncology Patient
  - 2.7.1. Consultation Approach
  - 2.7.2. Most frequent Types of Pain
  - 2.7.3. Treatment and Follow-up Guidelines
- 2.8. Intervention Techniques
  - 2.8.1. Ganglion Ablation
  - 2.8.2. Infiltrations
  - 2.8.3. Plexus
  - 2.8.4. Drug Infusion Pumps
  - 2.8.5. Neuro-Modulators
- 2.9. Pain Associated with Antineoplastic Treatment
  - 2.9.1. Hypercalcemia
  - 2.9.2. Tumor lysis
  - 2.9.3. Related to Radiotherapy
- 2.10. Repercussions of Pain
  - 2.10.1. On the Quality of Life
  - 2.10.2. On the Emotional Sphere
  - 2.10.3. Economic Repercussions

### Module 3. Palliative Care Nursing Procedures

- 3.1. Nursing Assessment
  - 3.1.1. Nursing Consultation
  - 3.1.2. Anamnesis in Nursing
  - 3.1.3. Examination in Nursing
  - 3.1.4. NIC-NOC
- 3.2. Nursing Scales
  - 3.2.1. Norton
  - 3.2.2. Barthel
  - 3.2.3. EVA Pain
  - 3.2.4. CONUT Index
  - 3.2.5. MUST
  - 3.2.6. MNA
  - 3.2.7. Pfeiffer
  - 3.2.8. APGAR Family Scale
  - 3.2.9. Risk of Caregiver Overload
- 3.3. Health education
  - 3.3.1. Skin Care
  - 3.3.2. Hygiene
  - 3.3.3. Nutrition and Physical Activity
- 3.4. Advanced Cures
  - 3.4.1. VAC
  - 3.4.2. Larval Therapy
  - 3.4.3. Mechanical and Chemical Debriding
- 3.5. Stomata
  - 3.5.1. Stomata Management
  - 3.5.2. Change of Stomata
  - 3.5.3. Cures
- 3.6. Management of Intravenous Pumps
  - 3.6.1. Types of Pumps
  - 3.6.2. Pump Handling
  - 3.6.3. Compatible Drugs





- 3.7. Nutrition
  - 3.7.1. Pumps
  - 3.7.2. Bolus Nutrition
  - 3.7.3. PEG
- 3.8. Subcutaneous Medication Management
  - 3.8.1. Elastomeric Infusers
  - 3.8.2. Subcutaneous Treatments
  - 3.8.3. Compatible Mixtures in Infusers
- 3.9. Non-invasive Techniques in Pain Control
  - 3.9.1. Capsaicin
  - 3.9.2. Radiofrequency
  - 3.9.3. Physical exercise
- 3.10. Midline-PICC
  - 3.10.1. Use of Ultrasound in Nursing
  - 3.10.2. Midline Cannulation in the Office or at Home
  - 3.10.3. Pathway Dressing

“ *The goal of the program will be to equip you with a thorough and practical understanding of palliative care, providing compassionate and effective care that improves the quality of life of patients and their families*”



# 05

# Methodology

This academic program offers students a different way of learning. Our methodology uses a cyclical learning approach: **Relearning.**

This teaching system is used, for example, in the most prestigious medical schools in the world, and major publications such as the **New England Journal of Medicine** have considered it to be one of the most effective.



“

*Discover Relearning, a system that abandons conventional linear learning, to take you through cyclical teaching systems: a way of learning that has proven to be extremely effective, especially in subjects that require memorization"*

## At TECH Nursing School we use the Case Method

In a given situation, what should a professional do? Throughout the program, students will face multiple simulated clinical cases, based on real patients, in which they will have to do research, establish hypotheses, and ultimately resolve the situation. There is an abundance of scientific evidence on the effectiveness of the method. Nurses learn better, faster, and more sustainably over time.

*With TECH, nurses can experience a learning methodology that is shaking the foundations of traditional universities around the world.*



According to Dr. Gérvas, the clinical case is the annotated presentation of a patient, or group of patients, which becomes a "case", an example or model that illustrates some peculiar clinical component, either because of its teaching power or because of its uniqueness or rarity. It is essential that the case is based on current professional life, in an attempt to recreate the real conditions in professional nursing practice.



“

*Did you know that this method was developed in 1912, at Harvard, for law students? The case method consisted of presenting students with real-life, complex situations for them to make decisions and justify their decisions on how to solve them. In 1924, Harvard adopted it as a standard teaching method”*

The effectiveness of the method is justified by four fundamental achievements:

1. Nurses who follow this method not only grasp concepts, but also develop their mental capacity, by evaluating real situations and applying their knowledge.
2. The learning process has a clear focus on practical skills that allow the nursing professional to better integrate knowledge acquisition into the hospital setting or primary care.
3. Ideas and concepts are understood more efficiently, given that the example situations are based on real-life.
4. Students like to feel that the effort they put into their studies is worthwhile. This then translates into a greater interest in learning and more time dedicated to working on the course.



## Relearning Methodology

At TECH we enhance the case method with the best 100% online teaching methodology available: Relearning.

This university is the first in the world to combine case studies with a 100% online learning system based on repetition combining a minimum of 8 different elements in each lesson, which is a real revolution compared to the simple study and analysis of cases.



*The nurse will learn through real cases and by solving complex situations in simulated learning environments. These simulations are developed using state-of-the-art software to facilitate immersive learning.*



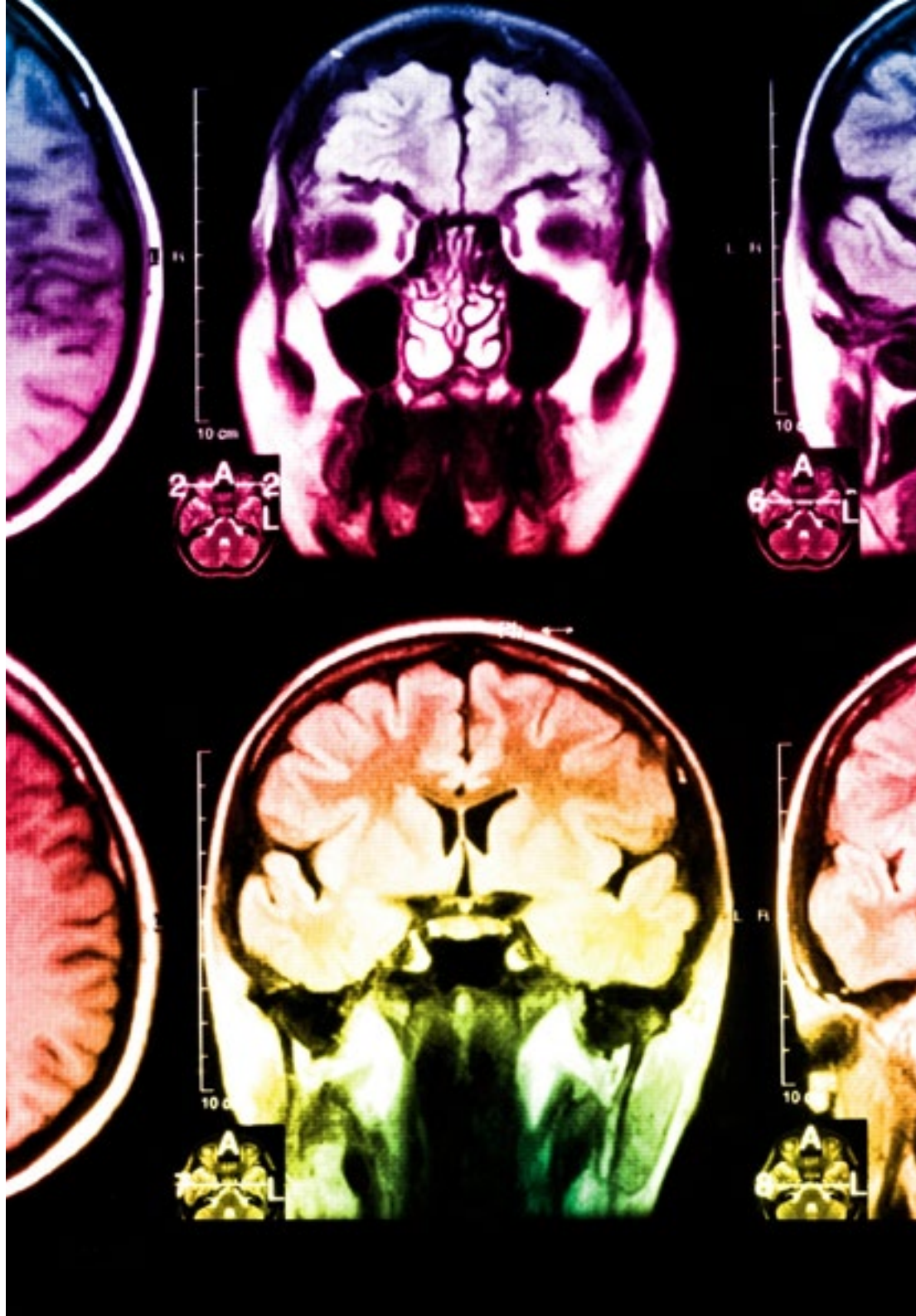
At the forefront of world teaching, the Relearning method has managed to improve the overall satisfaction levels of professionals who complete their studies, with respect to the quality indicators of the best online university (Columbia University).

With this methodology we have trained more than 175,000 nurses with unprecedented success in all specialities regardless of practical workload. Our pedagogical methodology is developed in a highly competitive environment, with a university student body with a strong socioeconomic profile and an average age of 43.5 years old.

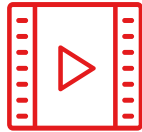
*Relearning will allow you to learn with less effort and better performance, involving you more in your specialization, developing a critical mindset, defending arguments, and contrasting opinions: a direct equation to success.*

In our program, learning is not a linear process, but rather a spiral (learn, unlearn, forget, and re-learn). Therefore, we combine each of these elements concentrically.

The overall score obtained by TECH's learning system is 8.01, according to the highest international standards.



This program offers the best educational material, prepared with professionals in mind:



### Study Material

All teaching material is produced by the specialists who teach the course, specifically for the course, so that the teaching content is really specific and precise.

These contents are then applied to the audiovisual format, to create the TECH online working method. All this, with the latest techniques that offer high quality pieces in each and every one of the materials that are made available to the student.



### Nursing Techniques and Procedures on Video

We introduce you to the latest techniques, to the latest educational advances, to the forefront of current medical techniques. All of this in direct contact with students and explained in detail so as to aid their assimilation and understanding. And best of all, you can watch them as many times as you want.



### Interactive Summaries

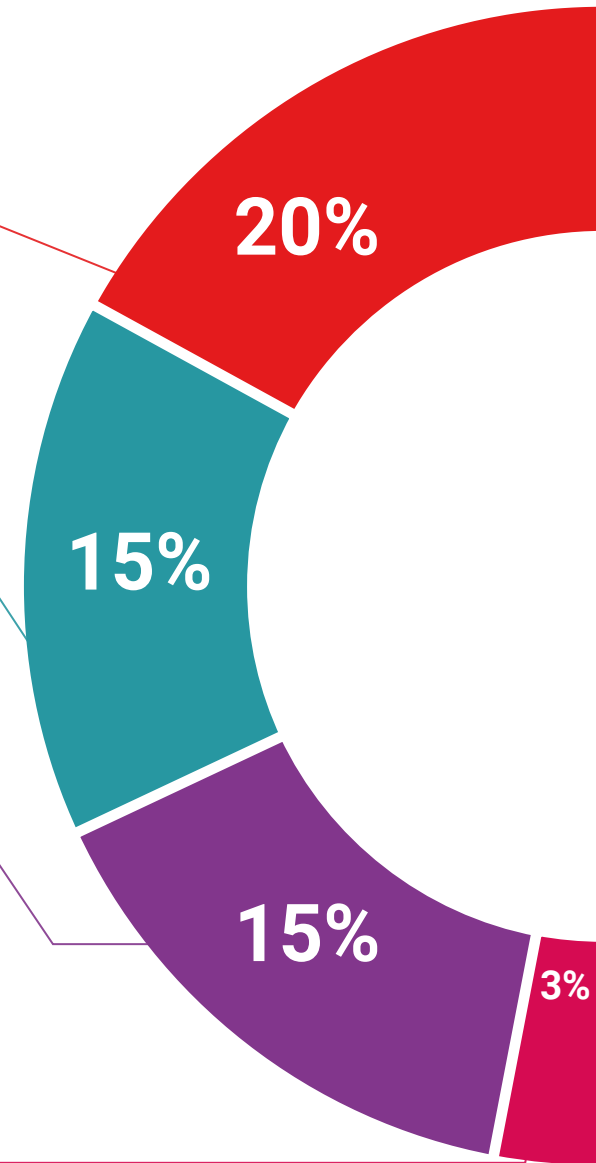
The TECH team presents the contents attractively and dynamically in multimedia lessons that include audio, videos, images, diagrams, and concept maps in order to reinforce knowledge.

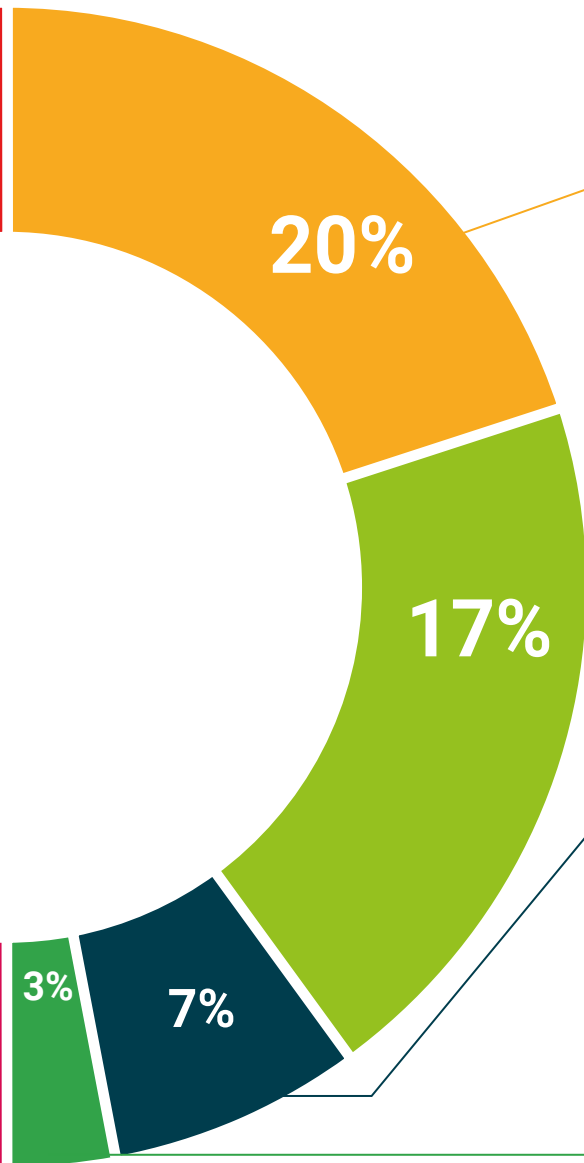
This exclusive educational system for presenting multimedia content was awarded by Microsoft as a "European Success Story".



### Additional Reading

Recent articles, consensus documents and international guidelines, among others. In TECH's virtual library, students will have access to everything they need to complete their course.





#### Expert-Led Case Studies and Case Analysis

Effective learning ought to be contextual. Therefore, TECH presents real cases in which the expert will guide students, focusing on and solving the different situations: a clear and direct way to achieve the highest degree of understanding.



#### Testing & Retesting

We periodically evaluate and re-evaluate students' knowledge throughout the program, through assessment and self-assessment activities and exercises, so that they can see how they are achieving their goals.



#### Classes

There is scientific evidence suggesting that observing third-party experts can be useful.

Learning from an Expert strengthens knowledge and memory, and generates confidence in future difficult decisions.



#### Quick Action Guides

TECH offers the most relevant contents of the course in the form of worksheets or quick action guides. A synthetic, practical, and effective way to help students progress in their learning.



06

# Certificate

The Postgraduate Diploma in Palliative Care in Oncology Patients for Nursing guarantees, in addition to the most rigorous and updated education, access to a Postgraduate Diploma issued by TECH Global University.





“

*Successfully complete this program and receive your university qualification without having to travel or fill out laborious paperwork"*

This program will allow you to obtain a **Postgraduate Diploma in Palliative Care in Oncology Patients for Nursing** endorsed by **TECH Global University**, the world's largest online university.

**TECH Global University**, is an official European University publicly recognized by the Government of Andorra ([official bulletin](#)). Andorra is part of the European Higher Education Area (EHEA) since 2003. The EHEA is an initiative promoted by the European Union that aims to organize the international training framework and harmonize the higher education systems of the member countries of this space. The project promotes common values, the implementation of collaborative tools and strengthening its quality assurance mechanisms to enhance collaboration and mobility among students, researchers and academics.

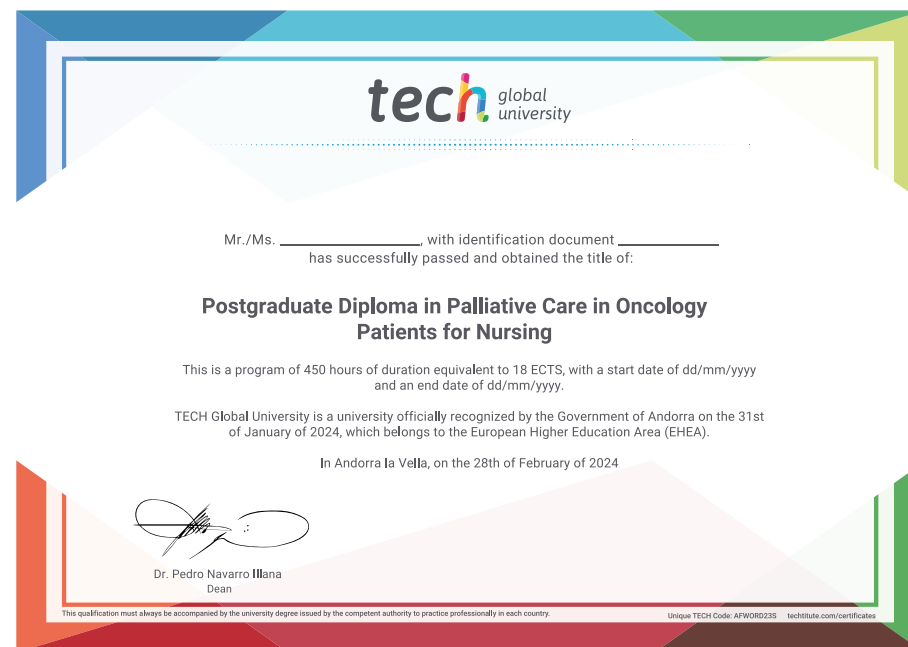
This **TECH Global University title**, is a European program of continuing education and professional updating that guarantees the acquisition of competencies in its area of knowledge, providing a high curricular value to the student who completes the program.

Title: **Postgraduate Diploma in Palliative Care in Oncology Patients for Nursing**

Modality: **online**

Duration: **6 months**

Accreditation: **18 ECTS**





future  
health confidence people  
education information tutors  
guarantee accreditation teaching  
institutions technology learning  
community commitment  
personalized service innovation  
knowledge present  
development languages  
virtual classroom



**Postgraduate Diploma**  
Palliative Care in Oncology  
Patients for Nursing

- » Modality: online
- » Duration: 6 months
- » Certificate: TECH Global University
- » Credits: 18 ECTS
- » Schedule: at your own pace
- » Exams: online

# Postgraduate Diploma Palliative Care in Oncology Patients for Nursing