

Postgraduate Diploma Nursing in Outpatient Emergencies





Postgraduate Diploma Nursing in Outpatient Emergencies

- » Modality: online
- » Duration: 6 months
- » Certificate: TECH Global University
- » Accreditation: 25 ECTS
- » Schedule: at your own pace
- » Exams: online

Website: www.techtute.com/us/nursing/postgraduate-diploma/postgraduate-diploma-nursing-outpatient-emergencies

Index

01

Introduction

p. 4

02

Objectives

p. 8

03

Course Management

p. 16

04

Structure and Content

p. 20

05

Methodology

p. 26

06

Certificate

p. 34

01

Introduction

A recent report by the World Health Organization reveals that approximately 1.19 million people die annually as a result of traffic accidents. In addition, the document reflects that 50% of people suffer non-fatal traumas that cause permanent disabilities such as amputations, brain injuries or post-traumatic stress disorders. Faced with this scenario, it is essential that nursing professionals provide specialized care in critical situations to optimize both the stabilization of patients and improve their prognosis for recovery. In order to facilitate this work, TECH presents an innovative university program focused on the most effective and safe therapeutic procedures to manage Outpatient emergencies. Also, this is taught in a convenient 100% online mode.





“

Thanks to this 100% online Postgraduate Diploma, you will provide excellent quality care to individuals who require immediate clinical care outside the hospital setting”

Outpatient emergencies are an ever-expanding field that requires comprehensive preparation of nurses. In this sense, professionals must respond effectively and promptly to different critical conditions ranging from Deep Venous Thrombosis or Hemoptysis to Central Nervous System Infections. In the face of this, experts need to update their clinical skills frequently to ensure an improvement in the condition of users and to reduce mortality in these severe scenarios. However, this updating can be challenging given their heavy workload.

For this reason, TECH has developed a revolutionary Postgraduate Diploma in Nursing in Outpatient Emergencies. Designed by references in this field, the academic itinerary will delve into the most cutting-edge diagnostic techniques to stabilize patients (including drug administration, catheterization or management of Non-Invasive Mechanical Ventilation). In line with this, the syllabus will deal with the management of a wide range of pathologies, among which cardiovascular, neurological or digestive disorders stand out. In this way, graduates will obtain clinical skills to identify signs early and apply the most appropriate therapies in each case. In addition, the program will emphasize the multidisciplinary approach to Multiple-Victim Incidents, offering state-of-the-art triage techniques.

In terms of methodology, the program is taught completely online so that nurses can plan their own schedules. In addition, TECH uses its innovative learning system: Relearning. This allows professionals to consolidate the concepts of the syllabus in a progressive and natural way, without the need to resort to costly traditional techniques such as memorization. To access the Virtual Campus, all graduates will need is an electronic device with an Internet connection. In this way, experts will be able to enjoy the most pragmatic didactic materials on the academic scene.

This **Postgraduate Diploma in Nursing in Outpatient Emergencies** contains the most complete and up-to-date scientific program on the market. The most important features include:

- ♦ The development of practical cases presented by experts in Emergencies and Medical Emergencies in the outpatient setting
- ♦ The graphic, schematic and eminently practical contents with which it is conceived gather scientific and practical information on those disciplines that are indispensable for professional practice
- ♦ Practical exercises where self-assessment can be used to improve learning.
- ♦ Its special emphasis on innovative methodologies
- ♦ Theoretical lessons, questions to the expert, debate forums on controversial topics, and individual reflection assignments
- ♦ Content that is accessible from any fixed or portable device with an Internet connection



With TECH you have the comfort in your hands by having the time flexibility to perform your sessions at any time of the day. What are you waiting for to enroll?"

“

You will delve into the clinical care of terminally ill patients, which will allow you to develop mobilization strategies to prevent Pressure Ulcers”

The program's teaching staff includes professionals from the sector who contribute their work experience to this specializing program, as well as renowned specialists from leading societies and prestigious universities.

The multimedia content, developed with the latest educational technology, will provide the professional with situated and contextual learning, i.e., a simulated environment that will provide immersive education programmed to learn in real situations.

This program is designed around Problem-Based Learning, whereby the professional must try to solve the different professional practice situations that arise during the course. For this purpose, students will be assisted by an innovative interactive video system created by renowned and experienced experts.

You will incorporate into your daily practice the most sophisticated triage techniques to efficiently manage Multiple Casualty Incidents.

The innovative Relearning methodology will allow you to assimilate the most complex concepts of the syllabus in a progressive and natural way.



02 Objectives

Through this Postgraduate Diploma, nurses will stand out for their holistic knowledge regarding the approach to Outpatient Emergency situations. Therefore, professionals will be able to recognize the signs of a variety of conditions (such as Arrhythmias, Syncope, Renal Lithiasis, etc.). At the same time, graduates will develop advanced skills for the performance of therapeutic procedures such as drug dosage, Non Invasive Mechanical Ventilation techniques or continuous monitoring of clinical signs. In this way, experts will contribute to stabilize patients until their arrival at the hospital center and improve their recovery prognosis.



“

You will acquire advanced skills aimed at the comprehensive management of trauma patients, from their initial assessment to the safe transfer to the hospital center”



General Objectives

- ♦ Analyze the management of multiple casualty incidents and catastrophes
- ♦ Identify diagnostic and therapeutic techniques in emergency situations
- ♦ Delve into the principles of pharmacology as applied to medical emergencies
- ♦ Examine the most innovative emergency protocols and procedures

“

The program will include several case studies that will bring you closer to the methodologies used in Psychiatric Emergencies”





Specific Objectives

Module 1. Generalities

- ◆ Define the fundamental concepts related to emergencies, including comprehensive care
- ◆ Delineate the principles of bioethics as applied to emergency situations, evaluating their importance in medical decision making
- ◆ Delve into current legislation related to emergency care, identifying key regulations and their impact on clinical practice
- ◆ Clarify knowledge of bioethics and legislation in practical cases of emergencies, ensuring appropriate ethical and legal care

Module 2. Advanced Cardiovascular Support

- ◆ Identify the essential techniques and procedures for basic and advanced life support in adults, including bradyarrhythmias and tachyarrhythmias
- ◆ Describe the principles and methods of basic and advanced life support in pediatric and neonatal patients, focusing on the recognition and management of the critically ill child and advanced airway management
- ◆ Analyze the strategies and algorithms of neonatal resuscitation and advanced life support in severe trauma patients, emphasizing neonatal stabilization and neonatal transport
- ◆ Differentiate effective advanced life support interventions in special cases, applying the acquired knowledge to provide adequate and timely treatment

Module 3. Mass Casualty Incidents (MCI) and Catastrophes

- ♦ Differentiate the general concepts related to mass casualty incidents (MCI) and disasters, as well as the importance of effective management in these situations
- ♦ Address the sectorization, deployment and logistic procedures necessary for an organized and efficient response to MCIs and disasters
- ♦ Delineate triage and multiple casualty care techniques, ensuring appropriate prioritization of patients according to the severity of their conditions
- ♦ Evaluate emergency plans and evacuation strategies, as well as the management of MCI in a hospital environment, including response to NBCR (Nuclear, Biological, Chemical and Radiological) incidents

Module 4. Diagnostic and Therapeutic Techniques (HSE and Catastrophic)

- ♦ Analyze invasive and non-invasive procedures such as catheterization, peripheral and central venous cannulation, intraosseous line, and advanced airway management techniques (IOT and difficult airway)
- ♦ Evaluate invasive and non-invasive mechanical ventilation techniques, as well as critical interventions such as pericardiocentesis and thoracocentesis, ensuring correct application in emergency situations
- ♦ Identify diagnostic tools such as emergency ultrasound, hemodynamic monitoring, electrocardiography, capnography and pulse oximetry, to properly assess and manage the patient's status
- ♦ Determine the neurological and sedoanalgesia status, applying electrical and oxygen therapy, and collecting analytical samples, using scales and physiological parameters in adults and children for a comprehensive care in emergencies

Module 5. Emergency Pharmacology

- ♦ Define the basic concepts of pharmacology as applied to emergency situations, including pharmacokinetics and pharmacodynamics of the used drugs
- ♦ Identify the different routes of administration of drugs in emergencies, ensuring the appropriate selection according to the patient's condition and the urgency of treatment
- ♦ Delve into safe practices in drug administration, emphasizing the importance of fluid therapy and precautions to avoid medical errors
- ♦ Gain knowledge in formulas and dosage calculations for the most frequent drugs in emergencies, ensuring an accurate and effective dosage in patient management

Module 6. Cardiovascular Emergencies

- ♦ Define the different arrhythmias, syncope and acute chest pains, using the appropriate tools and methods to identify each condition
- ♦ Address the immediate management of serious cardiovascular emergencies, such as acute coronary syndrome (code infarction), pericarditis with cardiac tamponade, and heart failure, ensuring rapid and effective intervention
- ♦ Delve into management protocols for critical conditions such as acute pulmonary edema, deep vein thrombosis (DVT), and pulmonary thromboembolism (PTE), based on updated clinical guidelines
- ♦ Analyze high-risk situations such as aortic dissection, hypertensive emergencies, and shock, applying best practices and therapeutic strategies to stabilize the patient and improve clinical outcomes

Module 7. Respiratory Emergencies

- ♦ Define the main respiratory emergencies, understanding their clinical manifestations and diagnostic criteria for timely intervention
- ♦ Examine the different approaches to Pneumonia and exacerbations of COPD, applying clinical guidelines to improve prognosis and patient recovery
- ♦ Delve into how to properly treat conditions such as pleuritis and pleural effusion, as well as pneumothorax, using specific techniques and procedures to alleviate symptoms and prevent complications
- ♦ Analyze cases of hemoptysis, applying appropriate therapeutic strategies to control hemorrhage and stabilize the patient, ensuring safe and effective care

Module 8. Neurological Emergencies

- ♦ Delve into the comprehensive neurological assessment of the critically ill patient, using assessment tools and techniques to identify and monitor serious neurological conditions
- ♦ Define how to address neurological vascular disorders, applying the stroke code protocol to ensure rapid and effective intervention in cases of stroke
- ♦ Identify alterations in the level of consciousness and intracranial hypertension, using appropriate therapeutic strategies to stabilize the patient and prevent further neurological damage
- ♦ Address the treatment of central nervous system infections, seizures and status epilepticus, headaches and vertiginous syndrome (vertigo), applying clinical guidelines and best practices to improve the patient's prognosis and quality of life

Module 9. Digestive Emergencies

- ♦ Evaluate acute abdominal pain, using clinical assessment techniques and diagnostic tools to identify the underlying cause and determine appropriate treatment
- ♦ Determine emergencies such as acute gastrointestinal bleeding and vascular disorders, implementing prompt and effective interventions to control blood loss and stabilize the patient
- ♦ Delve into intestinal obstruction and acute gastroenteritis, applying best-practice management protocols to alleviate symptoms and prevent complications
- ♦ Delve into acute pancreatitis, acute biliary pathology and acute anal pathology, using condition-specific therapeutic approaches to ensure comprehensive and effective patient care

Module 10. Nephrologic Emergencies

- ♦ Identify the major nephro-urologic emergencies, understanding their clinical manifestations and diagnostic methods for early and effective intervention
- ♦ Address conditions such as renal and excretory system lithiasis, and urinary retention, using appropriate techniques to alleviate symptoms and prevent complications
- ♦ Define urinary tract infections and acute renal failure, applying evidence-based treatment protocols to improve patient prognosis
- ♦ Analyze cases of hematuria, acute scrotal syndrome and urethral pathology, implementing therapeutic strategies specific to each condition and ensuring integrated and effective care

Module 11. Endocrinometabolic Emergencies

- ♦ Delve into disorders of glucose metabolism, such as hypoglycemia and diabetic ketoacidosis, applying rapid and effective interventions to stabilize the patient
- ♦ Assess thyroid emergencies, such as thyroid crises and myxedema, using appropriate clinical protocols to control symptoms and prevent complications
- ♦ Evaluate acid-base balance disorders, identifying underlying causes and applying specific therapies to restore physiologic balance
- ♦ Define water and electrolyte balance disorders, applying therapeutic strategies to adjust fluid and electrolyte levels, ensuring homeostasis and patient stability

Module 12. Psychiatric Emergencies

- ♦ Recognize the main psychopathologies that may occur in emergency situations, using diagnostic tools to identify and differentiate the various mental disorders
- ♦ Delve into psychomotor agitation and anxiety crises, applying appropriate therapeutic and containment interventions to ensure the safety of the patient and the health personnel
- ♦ Delve into acute alcoholic pathology and autolytic attempts, implementing detoxification, stabilization and emotional support protocols to prevent relapses and complications
- ♦ Assess neuroleptic malignant syndrome, applying the necessary therapeutic measures to control symptoms and stabilize the patient effectively



Module 13. Pediatric Emergencies

- ◆ Address infant colic and febrile syndrome, applying appropriate strategies to alleviate symptoms and ensure the well-being of the pediatric patient
- ◆ Define seizures in children, using quick and effective interventions to prevent complications and stabilize the patient
- ◆ Identify respiratory tract pathologies and exanthematous diseases in the pediatric setting, applying treatment protocols based on best clinical practices
- ◆ Evaluate cases of child abuse, ensuring a comprehensive approach that includes patient protection and emotional support of the patient, as well as the safe transport of the pediatric critically ill patient to receive specialized care

Module 14. Toxicological Emergencies

- ◆ Evaluate the general aspects of the poisoned patient, including the identification of signs and symptoms of poisoning and the application of appropriate diagnostic methods to determine the toxic substance involved
- ◆ Identify the protocols for initial management and stabilization of the poisoned patient, ensuring the administration of appropriate treatments such as antidotes and advanced life support
- ◆ Prevent long-term complications in poisoned patients by providing education on poison prevention and safe handling of toxic substances in both the hospital setting and at home

Module 15. Severe Trauma Care (Catastrophic or HSE)

- ◆ Understand the general concepts and biomechanics of accidents, analyzing how different types of trauma affect the human body to apply a comprehensive approach to their management
- ◆ Delve into effective primary and secondary assessment in patients with severe trauma, quickly identifying critical injuries and prioritizing in care
- ◆ Address the different mobilization and immobilization techniques using appropriate materials and methods, ensuring proper analgesia and sedation
- ◆ Delineate the basics of health care in special situations, such as confined and remote locations, as well as in pediatric and pregnant patients

Module 16. Other Important Aspects in Emergencies

- ◆ Differentiate patient safety practices and protocols, identifying and minimizing risks to ensure a safe and efficient environment in emergency situations
- ◆ Integrate new technologies in emergency management, assessing their impact and applicability to improve diagnostic accuracy, operational efficiency and clinical outcomes

Module 17. Other Emergencies

- ◆ Address the urgent complications of the terminally ill patient, applying interventions that alleviate suffering and improve quality of life in critical situations
- ◆ Analyze dermatologic emergencies in the emergency setting, using specific knowledge of dermatology to address acute and severe skin conditions
- ◆ Delve into the process of organ and tissue donation, understanding the ethical, legal and clinical aspects involved, and coordinating with the appropriate teams to ensure a successful and respectful procedure

03

Course Management

TECH's philosophy is to offer the most complete and renewed university programs in the academic landscape. To achieve this, the institution carries out a thorough process to form its teaching staff. Thanks to this, the present Postgraduate Diploma has the participation of distinguished experts in the field of Outpatient Emergencies. These professionals have a vast professional career, where they have contributed to optimize the quality of life of many patients. Therefore, nurses will have access to an intensive experience that will allow them to provide excellent care to individuals in critical conditions.



“

You will have access to a study plan designed by a renowned teaching staff specialized in Outpatient Emergencies, which will guarantee you a successful knowledge update”

Management



Dr. Sendra Más, Juan Amaro

- ♦ Assistant Physician of the Emergency Service at the Vega Baja Hospital. Alicante, Spain
- ♦ Emergency Physician in the Specialized Medical Unit (UME 1)
- ♦ Doctor in the Emergency Medical Attention Service (SAMU)
- ♦ Medical Helicopter Doctor
- ♦ Degree in Medicine and Surgery from the University of Alicante
- ♦ Specialist in Family and Community Medicine
- ♦ Accredited Professor of the Spanish Society of Emergency Medicine
- ♦ Member of the Spanish Society of Emergency Medicine

Professors

Dr. Perales Cano, Raquel

- ♦ Specialist in Family and Community Medicine
- ♦ Primary Care Physician at La Loma Health Center
- ♦ Specialist of the Emergency Department at the Vega Baja Hospital
- ♦ Physician of the Emergency Medicalized Unit 1 of the Murcian Health Service
- ♦ Health Professional of Samu

Dr. López Llames, Aurora

- ♦ Medical Specialist in Otorhinolaryngology
- ♦ Head of the Department of Otorhinolaryngology at the University Hospital of Torrevieja
- ♦ Specialist Physician in Menorca Ib-Salut
- ♦ Otorhinolaryngologist at Asturias Central University Hospital
- ♦ Master's Degree in Clinical Management from the Open University of Catalonia
- ♦ Graduate in Medicine and Surgery from the University of Oviedo

Dr. Zazo Menargues, Juan Manuel

- ♦ Primary Care Physician specialized in the Family and Community area
- ♦ Medical Coordinator of El Raval Health Center in Elche
- ♦ Primary Care Physician at the San Fermín Health Center
- ♦ Researcher of the Department of Clinical Medicine of CEU Cardenal Herrera University

Dr. Fernández Martínez, María Ángeles

- ♦ Biochemist-Nutritionist-Phytotherapist Responsible for Natural Life Nutrition Center
- ♦ Manager of the Parapharmacy, Dermopharmacy, Nutricosmetics and Phytotherapy Line
- ♦ Degree in Biochemistry from the University of Valencia
- ♦ University Expert in Nutrition, Dietetics and Diet Therapy
- ♦ University Expert in Microbiological Analysis of Foodstuffs
- ♦ Expert in Prevention and Treatment with Nutrition, Diet and Cancer
- ♦ Expert in Vegetarian, Clinical, and Sports Nutrition
- ♦ Specialist in Food Intolerances and the Study of the Intestinal Microbiota
- ♦ Numerous courses of study in Intestinal Microbiota, Analysis Methods and Applications
- ♦ Diploma in Natural and Orthomolecular Medicine
- ♦ Expert in the current use of Nutricosmetics and Nutraceuticals in general.
- ♦ Expert in Point of Sale Management in the Pharmacy and Parapharmacy Office
- ♦ Member of: Spanish Society of Probiotics and Prebiotics (SEPyP), Spanish Society of Dietetics (SEDCA) and Spanish Society of Nutrition (SEÑ)

Dr. Medina Martínez, María Ángeles

- ♦ Medical Director and Cofounder of Healthy Blue Bits
- ♦ Family and Community Medicine Specialist of the Ministry of Universal Health of the Valencian Government
- ♦ Co-founder of Toubabs Team
- ♦ Degree in Medicine from the University of Miguel Hernández de Elche
- ♦ Postgraduate degree in Clinical Management from the Open University of Catalonia
- ♦ Postgraduate degree in Public and Community Health from the University of Murcia
- ♦ Member of: ASD (Vocal), SoVaMFIC (President) and Forum of Primary Care Physicians of the Valencian Region

Dr. Gavilán Martín, Cristina

- ♦ Assistant Physician of Pediatric Emergencies at the Elche General University Hospital
- ♦ Specialist in Family and Community Medicine
- ♦ Doctor in Medicine by the Miguel Hernández University of Elche
- ♦ Degree in Medicine and Surgery from the University of Alicante
- ♦ APLS credential by the American Academy of Pediatrics and the American College of Pediatrics
- ♦ Professor of Master's Degrees and postgraduate courses
- ♦ Member of: The Spanish Society of Pediatric Emergencies (SEUP)

Dr. Pérez Marín, Estefanía

- ♦ Medical Specialist in Mental Health
- ♦ Medical Specialist in Psychiatry at the General University Hospital of Elche
- ♦ Degree in Medicine and Surgery from Miguel Hernández University of Elche
- ♦ Expert in Mental Health Emergencies

04

Structure and Content

Through this university program, nursing professionals will have a comprehensive understanding of the management of Outpatient Emergencies. To this end, the syllabus will delve into both Advanced Cardiovascular Support techniques and diagnostic procedures to identify the severity of patients. In addition, the syllabus will delve into the management of emergencies such as Pneumonias, Intracranial Hypertension, Hematuria or Acute Gastroenteritis. Therefore, graduates will be highly qualified to carry out therapies such as catheterization, drug administration or even continuous monitoring of the hemodynamic status of users.





“

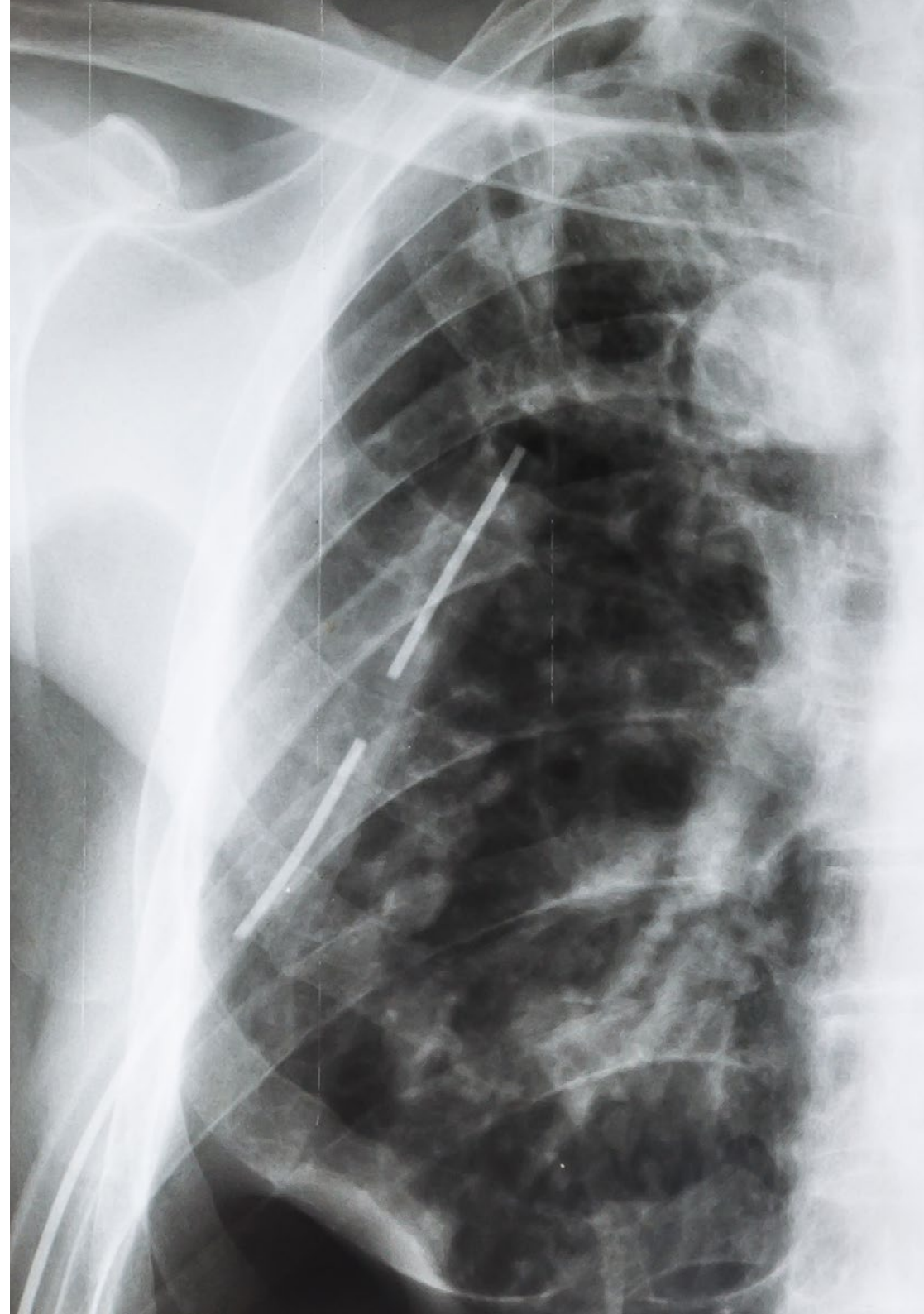
You will provide personalized care to patients with Traumatic Injuries in the outpatient setting, ensuring proper posture to prevent clinical complications such as Fractures”

Module 1. Generalities

- 1.1. Definitions and Concepts
- 1.2. Comprehensive Care
- 1.3. Bioethics and Legislation in Emergency Medicine
- 1.4. Bioethics
- 1.5. Legislation

Module 2. Advanced Cardiovascular Support

- 2.1. Basic Life Support in Adults
 - 2.1.1. Generalities
- 2.2. Advanced Life Support in Adults
 - 2.2.1. Action in Case of Bradyarrhythmia
 - 2.2.2. Action in Response to Tachyarrhythmias
- 2.3. Basic Pediatric Life Support
- 2.4. Pediatric and Neonatal Advanced Life Support
 - 2.4.1. Recognition and Management of Critically Ill Children
 - 2.4.2. Advanced Airway Management
 - 2.4.3. Basics of Mechanical Ventilation in Pediatrics
 - 2.4.4. Infusion Routes and Drugs in Pediatric CPR
 - 2.4.5. Pediatric VAS Algorithms and Arrhythmia Treatment
- 2.5. Neonatal Resuscitation
 - 2.5.1. Post-Resuscitation Stabilization and Neonatal Transport
- 2.6. Advanced Life Support in Serious Trauma Patients
- 2.7. Advanced Life Support in Special Cases



Module 3. Mass Casualty Incidents (MCI) and Catastrophes

- 3.1. Generalities
- 3.2. MCI and Disaster Management
- 3.3. Sectorization
- 3.4. Deployment and Logistics
- 3.5. Triage
- 3.6. Multiple Victim Care
- 3.7. Evacuation
- 3.8. MVI Management in a Hospital
- 3.9. CBRN Incidents
- 3.10. Emergency Planning

Module 4. Diagnostic and Therapeutic Techniques (HSE and Catastrophic)

- 4.1. Probes
- 4.2. Peripheral and Central Vein Cannulation
- 4.3. Intraosseous Route
- 4.4. OTI (Orotracheal Intubation)
- 4.5. Difficult Airway
- 4.6. Invasive Mechanical Ventilation
- 4.7. Management of Noninvasive Mechanical Ventilation
- 4.8. Pericardiocentesis
- 4.9. Thoracocentesis and Pleural Drainage
- 4.10. Emergency Department Ultrasonography
- 4.11. Electrical Therapy (MP, CV, DF)
- 4.12. Monitoring of Hemodynamic Status and Electrocardiography
- 4.13. Capnography and Pulse Oximetry
- 4.14. Oxygen Therapy
- 4.15. Monitoring of Neurological Status
- 4.16. Monitoring of Sedoanalgesia
- 4.17. Collecting Analytical Samples
- 4.18. Frequently Used Scales in Accident and Emergency Medicine
- 4.19. Physiological Parameters in Adults and Children

Module 5. Pharmacology in Emergencies

- 5.1. Basic Concepts
- 5.2. Drug Administration Routes in Accidents and Emergencies
- 5.3. Drug Administration Safety
- 5.4. Fluid Therapy
- 5.5. Most Common Drugs Used in Accident and Emergency Care
- 5.6. Formulas and Dosage Calculation

Module 6. Cardiovascular Emergencies

- 6.1. Arrhythmias
- 6.2. Syncope
- 6.3. Acute Chest Pain
- 6.4. Acute Coronary Syndrome The Heart Attack Code
- 6.5. Pericarditis, Cardiac Tamponade
- 6.6. Heart Failure
- 6.7. Acute Pulmonary Edema
- 6.8. Deep Vein Thrombosis (DVT)
- 6.9. Pulmonary Thromboembolism (PTE)
- 6.10. Aortic Dissection
- 6.11. Hypertensive Emergencies
- 6.12. Shock

Module 7. Respiratory Emergencies

- 7.1. Respiratory Emergencies
- 7.2. Pneumonia
- 7.3. COPD Exacerbation
- 7.4. Pleuritis and Pleural Effusion
- 7.5. Pneumothorax
- 7.6. Hemoptysis

Module 8. Neurological Emergencies

- 8.1. Neurological Assessment of a Critically Ill Patient
- 8.2. Vascular Disorders, Ictus Code
- 8.3. Alterations in the Level of Consciousness
- 8.4. Intracranial Hypertension
- 8.5. Central Nervous System Infections
- 8.6. Seizures and Status Epilepticus
- 8.7. Headaches
- 8.8. Vertiginous Syndrome (Vertigo)

Module 9. Digestive Emergencies

- 9.1. Acute Abdominal Pain
- 9.2. Acute Gastrointestinal Hemorrhage and Vascular Disorders
- 9.3. Intestinal Obstruction
- 9.4. Acute Gastroenteritis
- 9.5. Acute Pancreatitis
- 9.6. Acute Biliary Pathology
- 9.7. Acute Anal Pathology

Module 10. Nephrologic Emergencies

- 10.1. Nephro-urological Emergencies
- 10.2. Renal and Excretory System Lithiasis
- 10.3. Urinary Retention
- 10.4. Urinary Tract Infections
- 10.5. Acute Renal Failure
- 10.6. Hematuria
- 10.7. Acute Scrotal Syndrome
- 10.8. Urethral Pathology

Module 11. Endocrinometabolic Emergencies

- 11.1. Glucose Metabolism Disorders
- 11.2. Thyroid Emergencies
- 11.3. Acid-Base Balance Disorders
- 11.4. Water Balance Disorders
- 11.5. Electrolyte Balance Disorders

Module 12. Psychiatric Emergencies

- 12.1. Psychopathologies
- 12.2. Psychomotor Agitation
- 12.3. Acute Alcoholic Pathology
- 12.4. Self-Harm Attempt
- 12.5. Anxiety Attack
- 12.6. Neuroleptic Malignant Syndrome

Module 13. Pediatric Emergencies

- 13.1. Infantile Colic
- 13.2. Febrile Syndrome
- 13.3. Seizures
- 13.4. Airway Pathology
- 13.5. Exanthematous Diseases
- 13.6. Digestive Pathology
- 13.7. Child Abuse
- 13.8. Transport of Critical Pediatric Patients

Module 14. Toxicological Emergencies

- 14.1. General Aspects of an Intoxicated Patient
- 14.2. Most Common Intoxications

Module 15. Severe Trauma Care (Catastrophic or HSE)

- 15.1. Generalities
- 15.2. Biomechanics of Accidents
- 15.3. Primary and Secondary Assessment
- 15.4. TBI
- 15.5. Thoracic Trauma
- 15.6. Abdominal Trauma
- 15.7. Vertebral Trauma and Spinal Cord Injury
- 15.8. Trauma of the Locomotor System
- 15.9. Injuries
- 15.10. Hypovolemic Shock
- 15.11. Pediatric Trauma
- 15.12. Trauma During Pregnancy
- 15.13. Special Traumas
- 15.14. Injuries due to Physical and Environmental Agents
- 15.15. Bites and Stings
- 15.16. Analgesia and Sedation
- 15.17. Mobilization and Immobilization Materials and Techniques
- 15.18. Rescue and Medical Care in Confined and Remote Places

Module 16. Other Important Aspects in Emergencies

- 16.1. Communication Skills in Emergencies
- 16.2. Patient Safety
- 16.3. New Skills of the Emergency Professional
- 16.4. New Technologies in Emergencies

Module 17. Other Emergencies

- 17.1. Emergency Complications in Terminal Patients
- 17.2. Attention to the Situation in the Last Few Days of a Terminal Patient's Life
- 17.3. Dermatology in Emergencies
- 17.4. Organ and Tissue Donation

05 Methodology

This academic program offers students a different way of learning. Our methodology uses a cyclical learning approach: **Relearning**.

This teaching system is used, for example, in the most prestigious medical schools in the world, and major publications such as the **New England Journal of Medicine** have considered it to be one of the most effective.



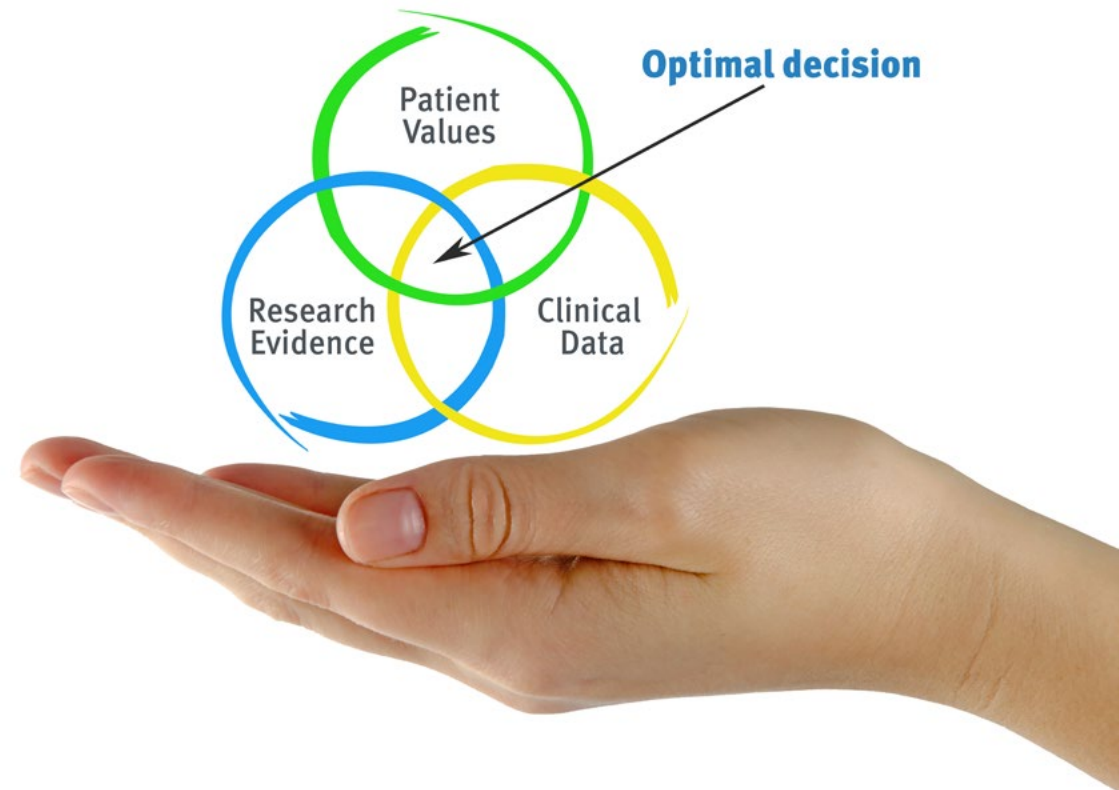
“

Discover Relearning, a system that abandons conventional linear learning, to take you through cyclical teaching systems: a way of learning that has proven to be extremely effective, especially in subjects that require memorization"

At TECH Nursing School we use the Case Method

In a given situation, what should a professional do? Throughout the program, students will face multiple simulated clinical cases, based on real patients, in which they will have to do research, establish hypotheses, and ultimately resolve the situation. There is an abundance of scientific evidence on the effectiveness of the method. Nurses learn better, faster, and more sustainably over time.

With TECH, nurses can experience a learning methodology that is shaking the foundations of traditional universities around the world.



According to Dr. Gérvas, the clinical case is the annotated presentation of a patient, or group of patients, which becomes a "case", an example or model that illustrates some peculiar clinical component, either because of its teaching power or because of its uniqueness or rarity. It is essential that the case is based on current professional life, in an attempt to recreate the real conditions in professional nursing practice.

“

Did you know that this method was developed in 1912, at Harvard, for law students? The case method consisted of presenting students with real-life, complex situations for them to make decisions and justify their decisions on how to solve them. In 1924, Harvard adopted it as a standard teaching method”

The effectiveness of the method is justified by four fundamental achievements:

1. Nurses who follow this method not only grasp concepts, but also develop their mental capacity, by evaluating real situations and applying their knowledge.
2. The learning process has a clear focus on practical skills that allow the nursing professional to better integrate knowledge acquisition into the hospital setting or primary care.
3. Ideas and concepts are understood more efficiently, given that the example situations are based on real-life.
4. Students like to feel that the effort they put into their studies is worthwhile. This then translates into a greater interest in learning and more time dedicated to working on the course.



Relearning Methodology

At TECH we enhance the case method with the best 100% online teaching methodology available: Relearning.

This university is the first in the world to combine case studies with a 100% online learning system based on repetition combining a minimum of 8 different elements in each lesson, which is a real revolution compared to the simple study and analysis of cases.



The nurse will learn through real cases and by solving complex situations in simulated learning environments. These simulations are developed using state-of-the-art software to facilitate immersive learning.

At the forefront of world teaching, the Relearning method has managed to improve the overall satisfaction levels of professionals who complete their studies, with respect to the quality indicators of the best online university (Columbia University).

With this methodology we have trained more than 175,000 nurses with unprecedented success in all specialities regardless of practical workload. Our pedagogical methodology is developed in a highly competitive environment, with a university student body with a strong socioeconomic profile and an average age of 43.5 years old.

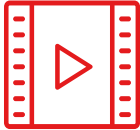
Relearning will allow you to learn with less effort and better performance, involving you more in your specialization, developing a critical mindset, defending arguments, and contrasting opinions: a direct equation to success.

In our program, learning is not a linear process, but rather a spiral (learn, unlearn, forget, and re-learn). Therefore, we combine each of these elements concentrically.

The overall score obtained by TECH's learning system is 8.01, according to the highest international standards.



This program offers the best educational material, prepared with professionals in mind:



Study Material

All teaching material is produced by the specialists who teach the course, specifically for the course, so that the teaching content is really specific and precise.

These contents are then applied to the audiovisual format, to create the TECH online working method. All this, with the latest techniques that offer high quality pieces in each and every one of the materials that are made available to the student.



Nursing Techniques and Procedures on Video

We introduce you to the latest techniques, to the latest educational advances, to the forefront of current medical techniques. All of this in direct contact with students and explained in detail so as to aid their assimilation and understanding. And best of all, you can watch them as many times as you want.



Interactive Summaries

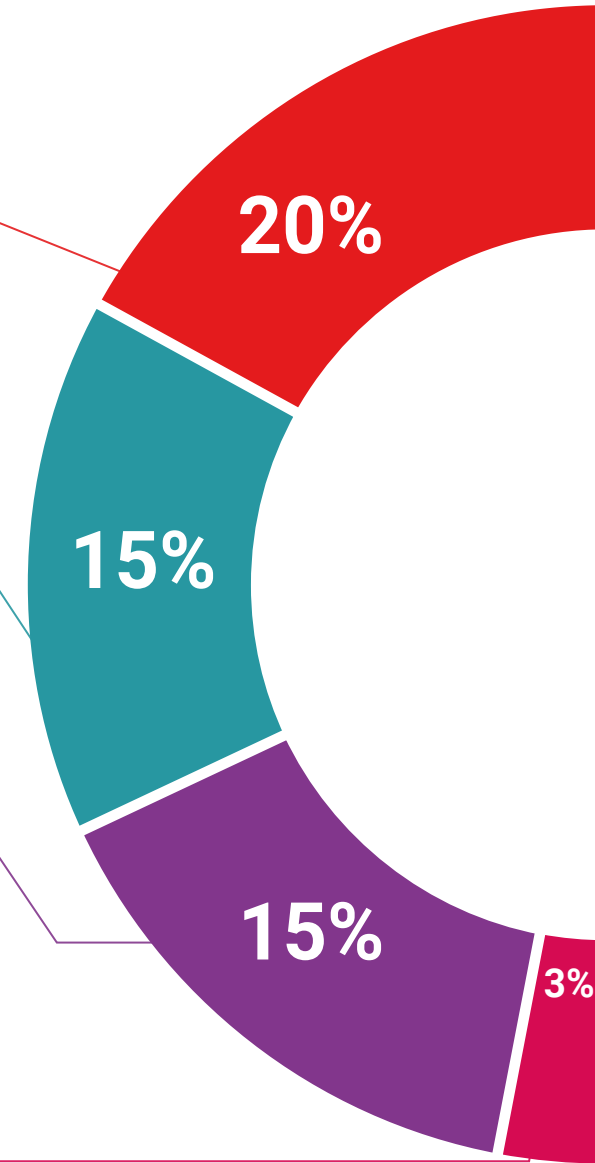
The TECH team presents the contents attractively and dynamically in multimedia lessons that include audio, videos, images, diagrams, and concept maps in order to reinforce knowledge.

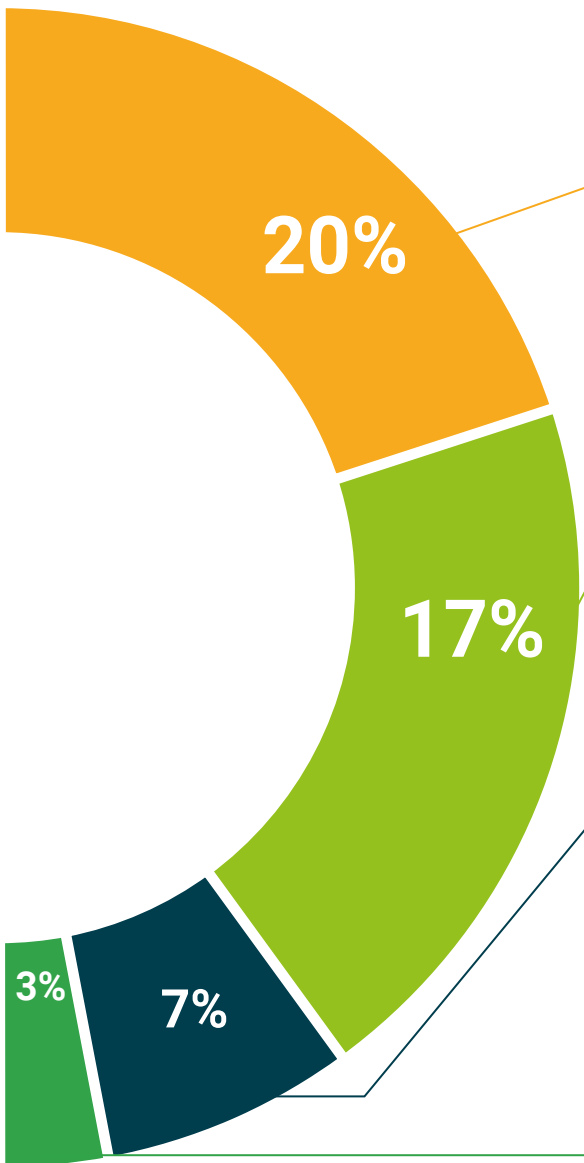
This exclusive educational system for presenting multimedia content was awarded by Microsoft as a "European Success Story".



Additional Reading

Recent articles, consensus documents and international guidelines, among others. In TECH's virtual library, students will have access to everything they need to complete their course.





Expert-Led Case Studies and Case Analysis

Effective learning ought to be contextual. Therefore, TECH presents real cases in which the expert will guide students, focusing on and solving the different situations: a clear and direct way to achieve the highest degree of understanding.



Testing & Retesting

We periodically evaluate and re-evaluate students' knowledge throughout the program, through assessment and self-assessment activities and exercises, so that they can see how they are achieving their goals.



Classes

There is scientific evidence suggesting that observing third-party experts can be useful.

Learning from an Expert strengthens knowledge and memory, and generates confidence in future difficult decisions.



Quick Action Guides

TECH offers the most relevant contents of the course in the form of worksheets or quick action guides. A synthetic, practical, and effective way to help students progress in their learning.



06 Certificate

The Postgraduate Diploma in Nursing in Outpatient Emergencies guarantees students, in addition to the most rigorous and up-to-date education program, access to a Postgraduate Diploma issued by TECH Global University.





Successfully complete this program and receive your university qualification without having to travel or fill out laborious paperwork"

This private qualification will allow you to obtain a **Postgraduate Diploma in Nursing in Outpatient Emergencies** endorsed by **TECH Global University**, the world's largest online university.

TECH Global University is an official European University publicly recognized by the Government of Andorra ([official bulletin](#)). Andorra is part of the European Higher Education Area (EHEA) since 2003. The EHEA is an initiative promoted by the European Union that aims to organize the international training framework and harmonize the higher education systems of the member countries of this space. The project promotes common values, the implementation of collaborative tools and strengthening its quality assurance mechanisms to enhance collaboration and mobility among students, researchers and academics.

This **TECH Global University** private qualification is a European program of continuing education and professional updating that guarantees the acquisition of competencies in its area of knowledge, providing a high curricular value to the student who completes the program.

Title: **Postgraduate Diploma in Nursing in Outpatient Emergencies**

Modality: **online**

Duration: **6 months**

Accreditation: **25 ECTS**



*Apostille Convention. In the event that the student wishes to have their paper diploma issued with an apostille, TECH Global University will make the necessary arrangements to obtain it, at an additional cost.

future
health confidence people
education information tutors
guarantee accreditation teaching
institutions technology learning
community commitment
personalized service innovation
knowledge present quality
online
development languages
classroom



Postgraduate Diploma Nursing in Outpatient Emergencies

- » Modality: Online
- » Duration: 6 months.
- » Certificate: TECH Global University
- » Accreditation: 25 ECTS
- » Schedule: at your own pace
- » Exams: online

Postgraduate Diploma Nursing in Outpatient Emergencies

