

Postgraduate Diploma

Clinical Manifestations and Oncology Nursing Research





Postgraduate Diploma Clinical Manifestations and Oncology Nursing Research

- » Modality: online
- » Duration: 6 months
- » Certificate: TECH Global University
- » Credits: 18 ECTS
- » Schedule: at your own pace
- » Exams: online

Website: www.techtute.com/in/nursing/postgraduate-diploma/postgraduate-diploma-clinical-manifestations-oncology-nursing-research

Index

01

Introduction

p. 4

02

Objectives

p. 8

03

Course Management

p. 12

04

Structure and Content

p. 16

05

Methodology

p. 22

06

Certificate

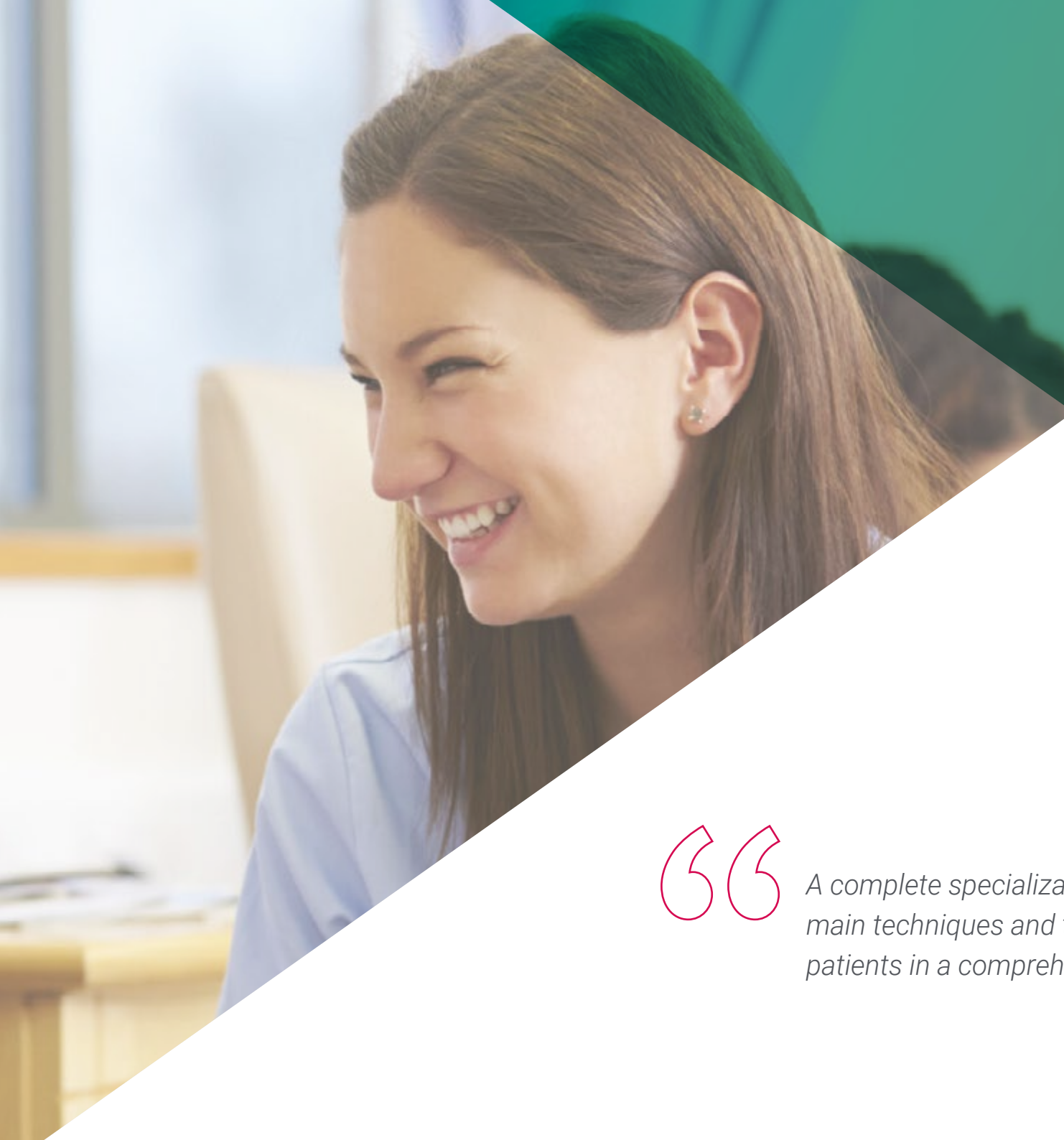
p. 30

01

Introduction

Nursing professionals are undoubtedly a key player in the development of preventive activities in the oncology setting. Their knowledge of vaccination and early detection programs is fundamental for both the patient and the health system as a whole, and one of the most demanded professional competencies in oncology care teams. The purpose of this program is to specialize the professional with a complete, global and practical learning process.





“

A complete specialization that will help you learn the main techniques and therapies to care for cancer patients in a comprehensive and professional manner”

The Postgraduate Diploma in Clinical Manifestations and Oncology Nursing Research has been designed according to the need for nurses' knowledge of genetics, cell biology or tumor markers, including advanced histological and biological concepts that will allow the student to understand the mechanisms that cause cancer and the factors involved in its appearance.

The student will also become familiar with the risk factors involved in cancer development and epidemiology. Cancer prevention, as well as the strategies to be implemented at each of its levels will be a fundamental topic in this Postgraduate Diploma.

It should be taken into account that oncology patients can present a wide variety of symptoms due to the evolution and pathophysiology of their disease. Their coexistence with adverse effects attributable to antineoplastic treatments is frequent, so it is essential to carry out an exhaustive, methodical and correct evaluation of the manifestations presented by the oncologic patient. To ensure proper patient monitoring, it is essential that the student learns to determine the causes and factors related to the onset of symptoms.

Finally, another of the fundamental aspects on which this program focuses is research, a basic pillar in the development of any discipline. The specialization of oncology in different areas and the evolution in the diagnosis and treatment of tumors are the result of the knowledge acquired through this research.

The combination of multimedia resources, real clinical cases and up-to-date contents will complete the specialization of the student, who will also acquire skills in communication, psychosocial approach and research, essential to provide quality care based on scientific research.

The up-to-date contents of this Postgraduate Diploma and its integrative approach will give rise to a complete vision of all aspects related to oncology nursing. The contents will provide a journey through the diverse needs of cancer patients, whose particularities require personalized attention.

Both the design of the program and the educational material used will facilitate the understanding of concepts, and the realization of practical cases will help to adapt what has been learned to clinical practice. In this way, this educational program will provide immersive learning in order to prepare professionals for real situations in their daily professional practice.

This **Postgraduate Diploma in Clinical Manifestations and Oncology Nursing Research** contains the most complete and up-to-date scientific program on the market. The most important features include:

- ♦ The development of case studies presented by experts in Oncology Nursing
- ♦ The graphic, schematic, and practical contents with which they are created, provide scientific and practical information on the disciplines that are essential for professional practice
- ♦ News on clinical manifestations and research in oncology nursing
- ♦ Practical exercises where self-assessment can be used to improve learning
- ♦ Special emphasis on innovative methodologies in Oncology Nursing
- ♦ Theoretical lessons, questions to the expert, debate forums on controversial topics, and individual reflection assignments
- ♦ Content that is accessible from any fixed or portable device with an Internet connection



*Don't miss this opportunity
to study in the biggest
private online university"*

“

This Postgraduate Diploma is the best investment you can make in selecting a refresher program to update your knowledge in Clinical Manifestations and Oncology Nursing Research”

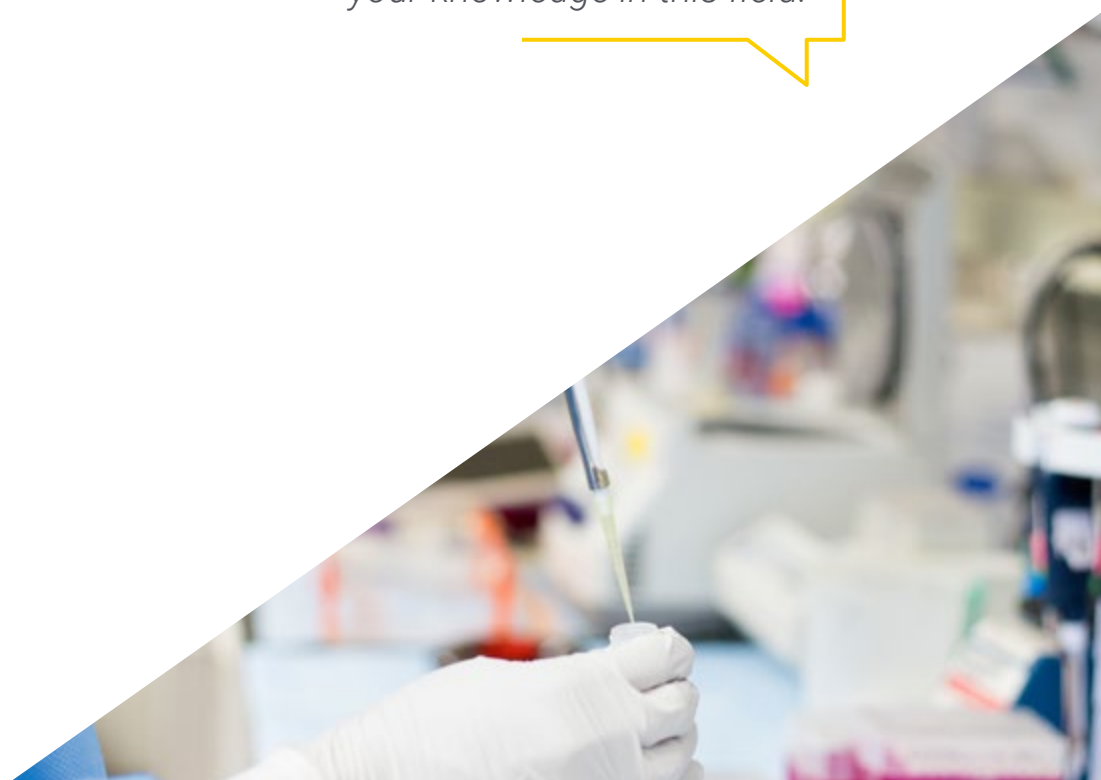
The teaching staff includes professionals from the field of Oncology Nursing, who bring their experience to this specialization program, as well as renowned specialists from leading societies and prestigious universities.

The multimedia content, developed with the latest educational technology, will provide the professional with situated and contextual learning, i.e., a simulated environment that will provide immersive learning programmed to study in real situations.

This program is designed around Problem-Based Learning, whereby the specialist must try to solve the different professional practice situations that arise throughout the program. For this purpose, the professional will be assisted by an innovative interactive video system created by renowned and experienced experts in Oncology Nursing with extensive experience.

This specialisation comes with the best didactic material, providing you with a contextual approach that will facilitate your learning.

This 100% online Postgraduate Diploma will allow you to balance your studies with your professional work while expanding your knowledge in this field.



02

Objectives

The Postgraduate Diploma in Clinical Manifestations and Oncology Nursing Research is oriented to prepare health professionals for their daily work when caring for cancer patients, following the highest quality standards in the performance of their work.



Cancer Treatment

ment

University of Modern

“

*Our goal is to help you succeed
in your career”*



General Objectives

- ♦ Expand the professional's knowledge, facilitating the acquisition of advanced competencies that will enable them to provide specialized care to complex oncology patients
- ♦ Incorporate theoretical and pathophysiological fundamentals in nursing practice, assuming the particularities of pediatric, adult and elderly patients
- ♦ Define the specific competencies of the nurse in the oncology setting to increase effectiveness and efficiency in the organization and acquire skills in coordination and management of the nursing team
- ♦ Design patient and family care plans integrating knowledge, attitudes and skills acquired during the program
- ♦ Apply the theoretical knowledge acquired in relation to the oncology patient and the management and administration of treatment, guaranteeing patient safety at all times
- ♦ Delve into the development of interpersonal relationships between the professional and the patient-family, as well as with the rest of the members of the multidisciplinary team
- ♦ Integrate emotional management strategies in the different stages of the disease process, incorporating the psychosocial and spiritual approach in the care and assuming death as a natural process in the terminal patient
- ♦ Acquire the necessary education to act with autonomy and provide the best care based on scientific evidence
- ♦ Implement research into routine nursing practice as a basis for professional development and effective and efficient management of complex cases



Specific Objectives

Module 1. Introduction to Oncology. Oncology Nursing

- ♦ Describe the professional competencies of Oncology Nursing
- ♦ Become familiar with the main etiopathogenic theories of cancer, as well as the most important mechanisms of malignant transformation
- ♦ Differentiate and understand the alterations involved in the processes of carcinogenesis
- ♦ Determine the risk factors related to the occurrence of oncologic diseases and their effects on health
- ♦ Know the epidemiological data of the main malignant tumors
- ♦ Recognize the different levels of cancer prevention, as well as the activities and strategies for each type of prevention
- ♦ Acquire information on the characteristics and development of the main cancer early detection programs
- ♦ Perform a complete assessment of the oncology patient, which allows to detect needs and implement strategies to solve problems

Module 2. Clinical manifestations and emergencies in the oncologic patient

- ♦ Apply the Nursing Care Process (NCP) in the oncology patient, establishing a comprehensive and individualized care plan
- ♦ Detect the main symptoms that may compromise the health of the oncology patient imminently
- ♦ Determine the most appropriate and up-to-date nursing care to act on the symptoms that have the greatest impact on the quality of life of the oncology patient
- ♦ Perform a comprehensive and systematic assessment of the person health status
- ♦ Explain the pathophysiological basis of pain in the oncologic patient and know its repercussion on the patient

- ♦ List the methods and tools for pain exploration and their appropriateness according to the patients characteristics
- ♦ Assess pain as a multidimensional entity and not only for its intensity
- ♦ Recognize the existing myths and prejudices regarding the use of opioid analgesics, both in patients and health professionals
- ♦ Establish the analgesic needs of an oncology patient based on the most recent evidence available
- ♦ Observe the individual's responses to analgesic treatment, assess its effectiveness and the occurrence of adverse effects

Module 3. Oncology Nursing Research

- ♦ Expose the fundamentals of research in health sciences and its importance in the field of oncology
- ♦ Distinguish the various areas of research in Oncology and Oncology Nursing, and their contribution to improving the quality of life of patients
- ♦ Deepen in the characteristics of translational research and its importance in Oncology
- ♦ Determine the main lines of nursing research in Oncology, both nationally and internationally
- ♦ Direct, organize and assess individual research projects and nursing or multidisciplinary work groups
- ♦ Understand and cope with the challenges and difficulties that new staff may face, based on different institutional support strategies

- ♦ Reflect on one's own practice, making critical judgments, showing a constructive attitude and taking into account the latest knowledge
- ♦ Differentiate the main models of critical reading, according to the type of study to be analyzed
- ♦ Interpret the information contained in the scientific literature to provide the patient with contrasted and quality evidence
- ♦ Use new information and communication technologies
- ♦ to improve daily practice and teamwork



*Catch up on the latest developments
in Clinical Manifestations and
Oncology Nursing Research”*

03

Course Management

The program's teaching staff includes leading experts in Oncology Nursing who contribute their vast work experience to this program. Additionally, other recognized specialists participate in its design and preparation, which means that the program is developed in an interdisciplinary manner.



“

We have an excellent team of professionals who have come together to teach you the latest advances in Oncology Nursing”

Management



Ms. Morán López, Marina

- ♦ Nurse in the Medical Oncology, General Surgery, Digestive and Traumatology
- ♦ Departments of the University Hospital Infanta Elena.
- ♦ Nurse at the Valdemoro Medical Center and La Paz University Hospital

Professors

Ms. Martínez Camacho, Minerva

- ♦ Nurse in the Oncology, Hematology and Nuclear Medicine Department of the Infanta Elena Hospital
- ♦ Nurse in the Internal Medicine Department of the Clínica Universal, in Madrid.
- ♦ Nurse in the Emergency Department of Gregorio Marañón Hospital, in Madrid
- ♦ Nurse in the Neurology Service of the Ramón y Cajal Hospital

Ms. Soriano Ruiz, Teresa

- ♦ Nurse at the Infanta Elena University Hospital
- ♦ Nurse at the General Surgery Department of Infanta Elena University Hospital
- ♦ Nurse at Amma Humanes, Nuestra Señora de La Soledad and Personalia Day Care Centers



04

Structure and Content

The structure of the contents has been designed by the best professionals in the field of Oncology Nursing, with extensive experience and recognized prestige in the profession, backed by the volume of cases reviewed and studied, and with extensive knowledge of new technologies applied to healthcare.



“

We have the most complete and up-to-date academic program in the market. We strive for excellence and for you to achieve it too”

Module 1. Introduction to Oncology. Oncology Nursing

- 1.1. Oncology and Oncology Nursing
 - 1.1.1. Introduction to Oncology Nursing
 - 1.1.2. Cancer Definition
 - 1.1.3. Essential Histological Concepts
- 1.2. Etiopathogenesis and Biology of Cancer
 - 1.2.1. Etiopathogenic Theories
 - 1.2.1.1. Viral Theory
 - 1.2.1.2. Oncogene Theory
 - 1.2.1.3. Suppressor Genes Theory
 - 1.2.1.4. Gene Theory
 - 1.2.1.5. Inflammatory Theory
 - 1.2.2. Biology of Cancer
 - 1.2.2.1. Concepts in Cell Biology
 - 1.2.2.2. Mechanisms of Malignant Transformation
- 1.3. Carcinogenesis
 - 1.3.1. Genetic Alterations
 - 1.3.1.1. Proto-Oncogenes
 - 1.3.1.2. Tumor Repair Genes
 - 1.3.1.3. DNA Repair Genes
 - 1.3.2. Epigenetic Alterations
 - 1.3.3. Carcinogenic Agents
- 1.4. Classification and Nomenclature of Tumors
 - 1.4.1. Benign Tumors
 - 1.4.2. Malignant tumours
- 1.5. Tumor Progression Staging
 - 1.5.1. Tumor Dissemination Routes
 - 1.5.2. Staging
 - 1.5.2.1. Depending on the Size
 - 1.5.2.2. Depending on the Level of Differentiation
- 1.6. Risk Factors
 - 1.6.1. Genetic Factors
 - 1.6.2. Hormonal Factors
 - 1.6.3. Radiation
 - 1.6.4. Tobacco
 - 1.6.5. Alcohol
 - 1.6.6. Diet
 - 1.6.7. Drugs:
 - 1.6.8. Physical Agents
 - 1.6.9. Chemical Agents
 - 1.6.10. Biological Agents
 - 1.6.11. Occupational Exposure
- 1.7. Epidemiology of Cancer
 - 1.7.1. Cancer Epidemiology Worldwide
 - 1.7.2. Cancer Epidemiology in Spain
 - 1.7.2.1. Incidence
 - 1.7.2.2. Prevalence
 - 1.7.2.3. Mortality
 - 1.7.2.4. Survival
- 1.8. Cancer Prevention
 - 1.8.1. Types of Prevention
 - 1.8.2. Primary prevention
 - 1.8.2.1. Intervention Against Smoking
 - 1.8.2.2. Intervention Against Alcohol Consumption
 - 1.8.2.3. Promotion of Healthy Diet
 - 1.8.3. Secondary prevention
 - 1.8.4. Tertiary prevention
 - 1.8.5. Quaternary Prevention
- 1.9. Early Detection Programs
 - 1.9.1. Colorectal Cancer Early Detection Program
 - 1.9.2. Breast Cancer Early Detection Program
 - 1.9.3. Cervical Cancer Early Detection Program

- 1.10. Global Assessment the Oncologic Patient
 - 1.10.1. Tumor Markers
 - 1.10.2. Imaging Tests
 - 1.10.3. Neurological Assessment Scales
 - 1.10.3.1. Quality of Life Rating Scales
 - 1.10.3.1.1. Symptom Assessment
 - 1.10.3.1.2 Functional Assessment
 - 1.10.3.1.3. Quality of life Assessment

Module 2. Clinical manifestations and emergencies in the oncologic patient.

- 2.1. Introduction to Semiology in the Oncologic Patient
 - 2.1.1. Nurse Assessment of the Oncologic Patient
 - 2.1.2. NANDA-NOC-NIC Care Plan
- 2.2. Respiratory Manifestations
 - 2.2.1. Dyspnoea
 - 2.2.2. Cough
 - 2.2.3. Hiccup
 - 2.2.4. Hemoptysis.
 - 2.2.5. Neoplastic Pleural Effusion
- 2.3. Digestive System Manifestations
 - 2.3.1. Dry Mouth
 - 2.3.2. Nausea and Vomiting
 - 2.3.3. Constipation. Fecaloma
 - 2.3.4. Diarrhea
 - 2.3.5. Gastric Crush Syndrome
 - 2.3.6. Dysphagia
 - 2.3.7. Sialorrhoea
 - 2.3.8. Intestinal Obstruction
 - 2.3.9. Neoplastic Ascites
- 2.4. Urinary Manifestations
 - 2.4.1. Bladder Spasm
 - 2.4.2. Urinary Incontinence.
 - 2.4.3. Vesical Tenesmus
 - 2.4.4. Dysuria
 - 2.4.5. Hematuria.
- 2.5. Psychological Manifestations
 - 2.5.1. Acute Confusional Syndrome
 - 2.5.2. Anxiety
 - 2.5.3. Depression
 - 2.5.4. Insomnia
- 2.6. Nervous System Manifestations
 - 2.6.1. Seizures.
 - 2.6.2. Spinal Cord Compression
 - 2.6.3. Intracranial Hypertension.
 - 2.6.4. Muscle Spasms
 - 2.6.5. Metabolic Encephalopathy
- 2.7. Hematologic and Circulatory Manifestations
 - 2.7.1. Hemorrhages
 - 2.7.2. Anaemia
 - 2.7.3. Superior Vena Cava Syndrome
 - 2.7.4. Neoplastic Pericardial Effusion
- 2.8. Miscellaneous: Systemic Symptoms and Constitutional Syndrome
 - 2.8.1. Asthenia
 - 2.8.2. Anorexia. Cachexia
 - 2.8.3. Diaphoresis
 - 2.8.4. Neoplastic Lymphedema
 - 2.8.5. Tumor Ulcers
 - 2.8.6. Pruritus
 - 2.8.7. Neoplastic Fever

- 2.9. Basis of Pain in Oncologic Patients
 - 2.9.1. Anatomophysiology
 - 2.9.2. Etiology
 - 2.9.3. Subjective Assessment
 - 2.9.4. Objective Assessment
 - 2.9.5. Measuring Tools
- 2.10. Analgesic Treatment Importance
 - 2.10.1. Analgesic Treatment Myths
 - 2.10.2. Analgesia Modalities

Module 3. Oncology Nursing Research

- 3.1. Research Bases in Health Sciences
 - 3.1.1. The Scientific Method. Structure
 - 3.1.2. Quantitative and Qualitative Research Designs
 - 3.1.3. Variables Definition Sampling
 - 3.1.4. Data Analysis
 - 3.1.5. Presentation of Results
- 3.2. Oncology Applied Research
 - 3.2.1. Background
 - 3.2.2. Current Overview
- 3.3. Oncology Research Areas
 - 3.3.1. Surgical Oncology
 - 3.3.2. Radiotherapy oncology
 - 3.3.3. Medical oncology
- 3.4. Oncology Translational Research
 - 3.4.1. Basic and Clinical Research
 - 3.4.2. Translational Research as a Roadmap
- 3.5. Nursing Oncology Research Areas
 - 3.5.1. Nursing Care Research
 - 3.5.2. Research on Oncology Patient Problems
 - 3.5.3. Research in Activities Derived from Other Disciplines
 - 3.5.4. Resource Management and Leadership



- 3.6. Challenges for the Future of Oncology Nursing Research
 - 3.6.1. History of Nursing Research
 - 3.6.2. Nursing Research Difficulties
 - 3.6.3. Future Outlook
- 3.7. Guidelines for Junior Researchers
 - 3.7.1. Research Project Design
 - 3.7.2. Main Groups and Research Lines
 - 3.7.3. Resources for Junior Researchers
 - 3.7.4. Financing Means
- 3.8. Evidence-Based Nursing
 - 3.8.1. Evidence-Based Practices in Oncology
- 3.9. Critical Reading of Scientific Literature
 - 3.9.1. Principles of Critical Reading
 - 3.9.2. Models of Critical Reading
- 3.10. Research: ICT and *Apps* Applied to Oncology
 - 3.10.1. Use and Communication between Professionals
 - 3.10.2. Patient Outreach



This specialization will allow you to comfortably advance in your career ”

05

Methodology

This academic program offers students a different way of learning. Our methodology uses a cyclical learning approach: **Relearning.**

This teaching system is used, for example, in the most prestigious medical schools in the world, and major publications such as the **New England Journal of Medicine** have considered it to be one of the most effective.





“

Discover Relearning, a system that abandons conventional linear learning, to take you through cyclical teaching systems: a way of learning that has proven to be extremely effective, especially in subjects that require memorization"

At TECH Nursing School we use the Case Method

In a given situation, what should a professional do? Throughout the program, students will face multiple simulated clinical cases, based on real patients, in which they will have to do research, establish hypotheses, and ultimately resolve the situation. There is an abundance of scientific evidence on the effectiveness of the method. Nurses learn better, faster, and more sustainably over time.

With TECH, nurses can experience a learning methodology that is shaking the foundations of traditional universities around the world.



According to Dr. Gérvas, the clinical case is the annotated presentation of a patient, or group of patients, which becomes a "case", an example or model that illustrates some peculiar clinical component, either because of its teaching power or because of its uniqueness or rarity. It is essential that the case is based on current professional life, in an attempt to recreate the real conditions in professional nursing practice.

“

Did you know that this method was developed in 1912, at Harvard, for law students? The case method consisted of presenting students with real-life, complex situations for them to make decisions and justify their decisions on how to solve them. In 1924, Harvard adopted it as a standard teaching method”

The effectiveness of the method is justified by four fundamental achievements:

1. Nurses who follow this method not only grasp concepts, but also develop their mental capacity, by evaluating real situations and applying their knowledge.
2. The learning process has a clear focus on practical skills that allow the nursing professional to better integrate knowledge acquisition into the hospital setting or primary care.
3. Ideas and concepts are understood more efficiently, given that the example situations are based on real-life.
4. Students like to feel that the effort they put into their studies is worthwhile. This then translates into a greater interest in learning and more time dedicated to working on the course.



Relearning Methodology

At TECH we enhance the case method with the best 100% online teaching methodology available: Relearning.

This university is the first in the world to combine case studies with a 100% online learning system based on repetition combining a minimum of 8 different elements in each lesson, which is a real revolution compared to the simple study and analysis of cases.



The nurse will learn through real cases and by solving complex situations in simulated learning environments. These simulations are developed using state-of-the-art software to facilitate immersive learning.

At the forefront of world teaching, the Relearning method has managed to improve the overall satisfaction levels of professionals who complete their studies, with respect to the quality indicators of the best online university (Columbia University).

With this methodology we have trained more than 175,000 nurses with unprecedented success in all specialities regardless of practical workload. Our pedagogical methodology is developed in a highly competitive environment, with a university student body with a strong socioeconomic profile and an average age of 43.5 years old.

Relearning will allow you to learn with less effort and better performance, involving you more in your specialization, developing a critical mindset, defending arguments, and contrasting opinions: a direct equation to success.

In our program, learning is not a linear process, but rather a spiral (learn, unlearn, forget, and re-learn). Therefore, we combine each of these elements concentrically.

The overall score obtained by TECH's learning system is 8.01, according to the highest international standards.



This program offers the best educational material, prepared with professionals in mind:



Study Material

All teaching material is produced by the specialists who teach the course, specifically for the course, so that the teaching content is really specific and precise.

These contents are then applied to the audiovisual format, to create the TECH online working method. All this, with the latest techniques that offer high quality pieces in each and every one of the materials that are made available to the student.



Nursing Techniques and Procedures on Video

We introduce you to the latest techniques, to the latest educational advances, to the forefront of current medical techniques. All of this in direct contact with students and explained in detail so as to aid their assimilation and understanding. And best of all, you can watch them as many times as you want.



Interactive Summaries

The TECH team presents the contents attractively and dynamically in multimedia lessons that include audio, videos, images, diagrams, and concept maps in order to reinforce knowledge.

This exclusive educational system for presenting multimedia content was awarded by Microsoft as a "European Success Story".



Additional Reading

Recent articles, consensus documents and international guidelines, among others. In TECH's virtual library, students will have access to everything they need to complete their course.





Expert-Led Case Studies and Case Analysis

Effective learning ought to be contextual. Therefore, TECH presents real cases in which the expert will guide students, focusing on and solving the different situations: a clear and direct way to achieve the highest degree of understanding.



Testing & Retesting

We periodically evaluate and re-evaluate students' knowledge throughout the program, through assessment and self-assessment activities and exercises, so that they can see how they are achieving their goals.



Classes

There is scientific evidence suggesting that observing third-party experts can be useful.

Learning from an Expert strengthens knowledge and memory, and generates confidence in future difficult decisions.



Quick Action Guides

TECH offers the most relevant contents of the course in the form of worksheets or quick action guides. A synthetic, practical, and effective way to help students progress in their learning.



06

Certificate

The Postgraduate Diploma in Clinical Manifestations and Oncology Nursing Research guarantees students, in addition to the most rigorous and up-to-date education, access to a Postgraduate Diploma issued by TECH Global University.



“

Successfully complete this program and receive your university qualification without having to travel or fill out laborious paperwork”

This program will allow you to obtain your **Postgraduate Diploma in Clinical Manifestations and Oncology Nursing Research** endorsed by **TECH Global University**, the world's largest online university.

TECH Global University is an official European University publicly recognized by the Government of Andorra ([official bulletin](#)). Andorra is part of the European Higher Education Area (EHEA) since 2003. The EHEA is an initiative promoted by the European Union that aims to organize the international training framework and harmonize the higher education systems of the member countries of this space. The project promotes common values, the implementation of collaborative tools and strengthening its quality assurance mechanisms to enhance collaboration and mobility among students, researchers and academics.

This **TECH Global University** title is a European program of continuing education and professional updating that guarantees the acquisition of competencies in its area of knowledge, providing a high curricular value to the student who completes the program.

Title: **Postgraduate Diploma in Clinical Manifestations and Oncology Nursing Research**

Modality: **online**

Duration: **6 months**

Accreditation: **18 ECTS**



*Apostille Convention. In the event that the student wishes to have their paper diploma issued with an apostille, TECH Global University will make the necessary arrangements to obtain it, at an additional cost.



Postgraduate Diploma
Clinical Manifestations
and Oncology Nursing
Research

- » Modality: online
- » Duration: 6 months
- » Certificate: TECH Global University
- » Credits: 18 ECTS
- » Schedule: at your own pace
- » Exams: online

Postgraduate Diploma

Clinical Manifestations and Oncology Nursing Research

