

# Postgraduate Diploma

## Assessment and Psychodiagnosis in the Elderly for Nursing





## Postgraduate Diploma Assessment and Psychodiagnostics in the Elderly for Nursing

- » Modality: online
- » Duration: 6 months
- » Certificate: TECH Global University
- » Accreditation: 19 ECTS
- » Schedule: at your own pace
- » Exams: online

Website: [www.techtute.com/us/nursing/postgraduate-diploma/postgraduate-diploma-assessment-psychodiagnostics-elderly-nursing](http://www.techtute.com/us/nursing/postgraduate-diploma/postgraduate-diploma-assessment-psychodiagnostics-elderly-nursing)

# Index

01

Introduction

---

*p. 4*

02

Objectives

---

*p. 8*

03

Course Management

---

*p. 12*

04

Structure and Content

---

*p. 18*

05

Study Methodology

---

*p. 24*

06

Certificate

---

*p. 32*

01

# Introduction

Improvements in the quality of life and advances in medicine have favored the growth of an aging society. The elderly are living longer and longer and in better physical and psychological conditions. However, it is still important to continue research in this field from the perspective of all the actors who influence the well-being of the elderly. In this case, this Postgraduate Diploma is aimed at nurses, to increase their skills in the treatment of the elderly.







“

*Knowing the mind of our elders is a must for all health professionals who are in frequent contact with them”*

Nurses are people who must have extensive knowledge in different areas. Although their work as nurses can be considered to be equal, regardless of the area in which they develop, this is not entirely true, since the more specialized professionals are in their area of intervention, the more complete they will be and the better they will develop their work.

In this case, TECH has set out to improve the knowledge of nursing professionals in the evaluation and psychodiagnosis of old age, since nurses have direct and constant contact with elderly patients, so it is essential that they alert to any anomaly they may detect and, in addition, greater knowledge about the personality traits of patients will help them learn to manage them with full guarantees of success, and achieving the necessary confidence so that they feel protected with these professionals.

For this reason, TECH has designed this high quality Postgraduate Diploma, created by leading professionals in the field and with the most updated content, so that professionals only have to put the desire to study.

In addition, being a 100% online specialization, nurses will be able to combine the study of this Postgraduate Diploma with the rest of their daily obligations, choosing at all times where and when to study. A high-level qualification that will take nursing professionals to the highest level in their field of action.

This **Postgraduate Diploma in Assessment and Psychodiagnosis in the Elderly for Nursing** contains the most complete and up-to-date scientific program on the market. The most important features include:

- ♦ Practical cases presented by experts in Psychogeriatrics
- ♦ The graphic, schematic, and practical contents with which they are created, provide scientific and practical information on the disciplines that are essential for professional practice
- ♦ New developments in assessment and psychodiagnosis in the elderly
- ♦ Practical exercises where self-assessment can be used to improve learning
- ♦ Special emphasis on innovative methodologies in assessment and psychodiagnosis in the elderly
- ♦ Theoretical lessons, questions to the expert, debate forums on controversial topics, and individual reflection assignments
- ♦ Content that is accessible from any fixed or portable device with an Internet connection



*The care of the elderly requires specialized professionals. Don't think twice and become the best nurse for your patients"*

“

*This Postgraduate Diploma is the best investment you can make in the selection of a refresher program for two reasons: in addition to updating your knowledge in Assessment and Psychodiagnosis in the Elderly for Nursing, you will obtain a qualification by TECH Global University”*

The teaching staff includes professionals from the field of psychogeriatrics, who bring their experience to this educational program, as well as renowned specialists from leading societies and prestigious universities.

Its multimedia content, developed with the latest educational technology, will allow professionals to learn in a contextual and situated learning environment, i.e., a simulated environment that will provide immersive education programmed to prepare in real situations.

The design of this program focuses on Problem-Based Learning, through which nurses will have to try to solve different professional practice situations that will be presented to them throughout the academic program. To do this, professionals will have the help of an innovative interactive video system developed by recognized experts in Assessment and Psychodiagnosis in the Elderly, and with great experience.

*Continue your education with us and increase your decision-making confidence.*

*Don't miss the opportunity to improve your professional skills. We offer you the best teaching methodology and the latest educational technology.*



02

# Objectives

The Postgraduate Diploma in Assessment and Psychodiagnosis in the Elderly for Nursing is oriented to facilitate the performance of nurses, so that they can keep their knowledge up to date to exercise their professional practice with total confidence.





“

*This Postgraduate Diploma will allow you to update your knowledge, with the use of the latest educational technology, to contribute with quality and confidence to decision-making"*



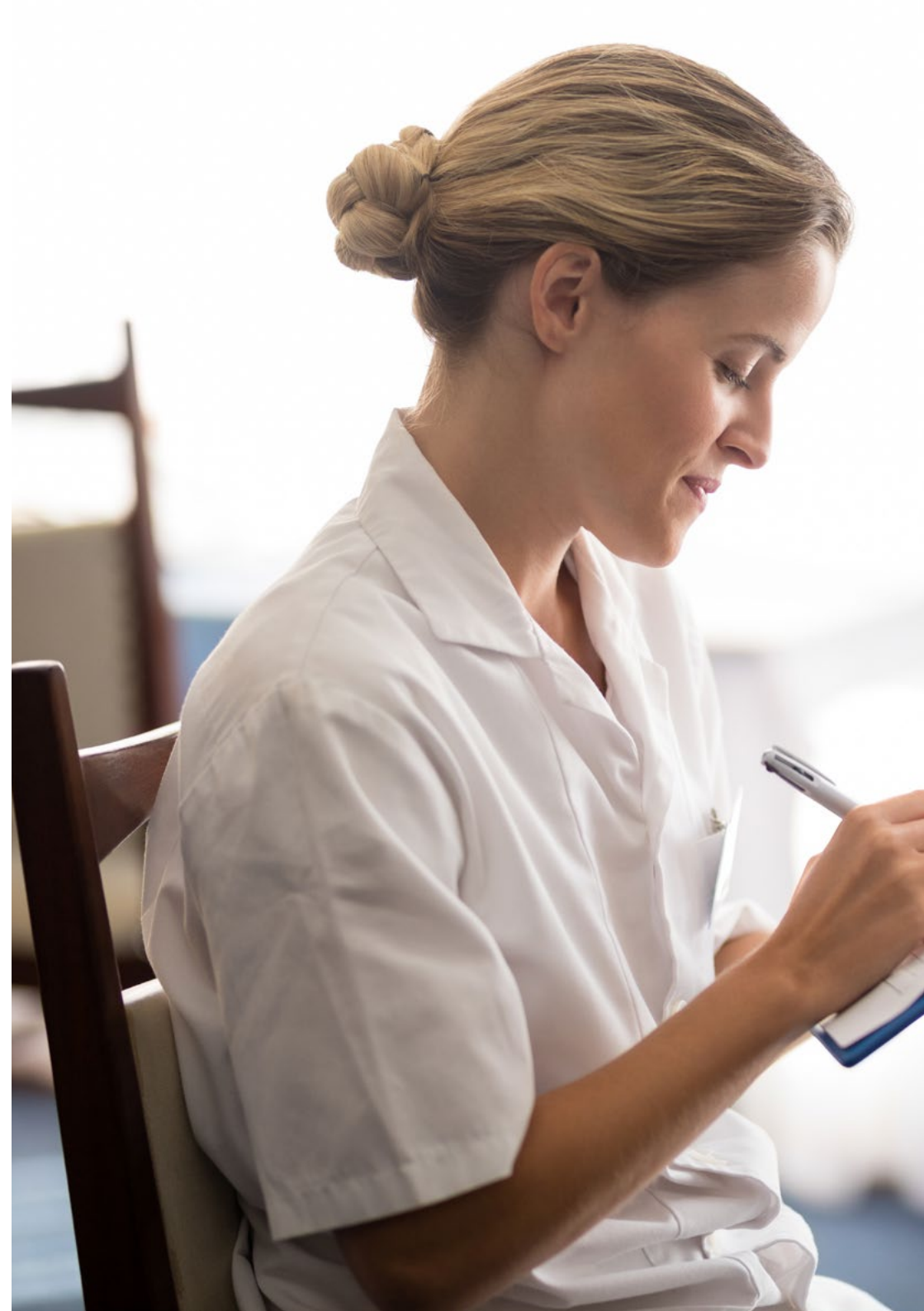
## General Objectives

---

- ♦ Promote the ability to relate to the psychological state of the elderly
- ♦ Innovate in the design of multidisciplinary intervention protocols for the elderly
- ♦ Enhance assessment, differential diagnosis and intervention of the elderly
- ♦ Provide the skills to support individuals in old age from the here and now
- ♦ Master the positive and negative personality changes that occur in the elderly



*Our goal is to achieve academic excellence and we will help you achieve it too"*





## Specific Objectives

---

### Module 1. Assessment of Health and Disease in Old Age

- ♦ Assess and diagnose, taking into account the social and affective surrounding in which the elderly person finds themselves
- ♦ Train in listening and managing silence with elderly patients

### Module 2. Aging from the Perspective of Personality Traits

- ♦ Perform and adapt intervention protocols within an interdisciplinary framework
- ♦ Develop psychosocial intervention protocols, taking into account the role of the patient in their family

### Module 3. Physiological and Neuropsychological Changes in the Elderly

- ♦ Understand and know the differential aspects of mental disorders at this age
- ♦ Know the clinical and prognostic features of the various disorders of old age
- ♦ Master and manage the interferences of aging in the mental disorders to be treated
- ♦ Learn intervention tools that use the patient's senses as a setting

03

# Course Management

Within the concept of total quality of this program, TECH is proud to provide professional nurses with a teaching staff of the highest level, chosen for their proven experience in the educational field. Professionals from different areas and fields of expertise that make up a complete, multidisciplinary team. A unique opportunity to learn from the best.







“

*Our teachers will put their experience and teaching skills at your disposal to offer you a stimulating and creative program”*

## International Guest Director

Dr. Abby Altman is a renowned **Psychologist** specialized in **Anthropology** and **Philosophy**. Her line of work focuses on providing personalized therapeutic plans to patients with conditions such as **Cognitive Impairment** or **Dementia** in order to optimize their long-term quality of life.

Her passion for integrating **behavioral health** into primary care has led her to lead important programs focused on **mental wellness**. One example is **iCBT**, which promotes **neurological resilience**. In addition, during her career, she has held strategic roles such as the **Director of Brain Support and Wellness Services** at Brigham and Women's Hospital in Massachusetts.

Moreover, her leadership skills in healthcare settings have allowed her to contribute to the comprehensive training of specialists. In this way, she has contributed to physicians developing a **multidisciplinary approach** based on behavioral change.

It should be noted that her work has been recognized internationally on multiple occasions. One of his main contributions is the **digital approach** in the field of **Geriatric Psychotherapy**. In this way, she has received a variety of awards for her work in improving access to **mental health** and the use of **motivational interviewing** to promote behavior change in users.

Firmly committed to progress in this area, she has balanced this work with her role as a **Clinical Researcher**. As such, she has conducted multiple exhaustive analyses on topics such as loneliness, behavioral patterns or the adaptation of **Cognitive-Behavioral Therapies**.

She is also a member of the **Motivational Interviewing Trainers Network**. In this organization she participates in the design of educational programs and didactic materials of this technique for different contexts, from Primary Care to Addictions management.



## Dr. Altman, Abby

---

- Co-director of Neurological Wellness at Brigham and Women's Hospital in Boston, United States
- Geropsychologist at Brigham and Women's Hospital
- Clinical Leader, iCBT program at Brigham and Women's Hospital
- Psychologist at Brigham and Women's Hospital
- Director of Psychology Education at Brigham and Women's Hospital
- Subject Matter Expert at Inflect Health Advisory
- Assistant Project Coordinator at Boston VA Research Institute
- Clinical Psychology Intern at Bay Pines VA Healthcare System
- Behavioral Specialist at Eldercare Assessment & Resources
- Ph.D. in Philosophy at Lehigh University

“

*Thanks to TECH, you will be able to learn with the best professionals in the world”*

## Management



### Dr. Aguado Romo, Roberto

- Psychologist specializing in Clinical Psychology
- Psychologist European specialist in Psychotherapy
- Managing Director of the evaluation and psychotherapy centers in Madrid, Bilbao and Talavera de la Reina
- Author of Time-Limited Psychotherapy
- Researcher at CerNet, Emotional Network, and European Institute for Time-Limited Psychotherapies

## Professors

### Dr. Fernandez, Angel

- ♦ Director of the Evaluation and Psychotherapy Center of Madrid
- ♦ European specialist psychologist in Psychotherapy from the EFPA
- ♦ Health Psychologist
- ♦ Master's Degree in Clinical and Health Psychology
- ♦ Tutor in charge of the Psychodiagnosis and Psychological Intervention area of the CEP
- ♦ Author of the TEN technique
- ♦ Head of studies on the Master's Degree in Time-Limited Psychotherapy and Health Psychology
- ♦ Specialist in Clinical Hypnosis and Relaxation

### Dr. Zabala-Baños, María Carmen

- ♦ PhD in Psychology from University of Castilla – La Mancha
- ♦ Health Psychologist Master's Degree in Clinical and Health Psychology
- ♦ Master's Degree in Time-Limited Psychotherapy and Health Psychology
- ♦ Psychosocial and Work Rehabilitation Specialist
- ♦ UCLM European specialist psychologist in psychotherapy EFPA
- ♦ Specialist in Clinical Hypnosis and Relaxation



**Dr. Anasagasti, Aritz**

- ♦ European specialist psychologist in Psychotherapy from the EFPA at the CEP health center in Bilbao
- ♦ President of Emotional Network
- ♦ Master's Degree in Time-Limited Psychotherapy and Health Psychology
- ♦ Psychogeriatrics Specialist
- ♦ Creator of the home-based intervention
- ♦ Member of the Basque Association of Gestalt Therapy
- ♦ Reciprocal Interaction Psychotherapist
- ♦ Specialist in neurodegenerative diseases from the University of the Basque Country
- ♦ Responsible for the computer development of Emotional Management and Treatment in the Elderly

**Dr. Kaisser, Carlos**

- ♦ Head of the Otolaryngology department at Segovia General Hospital
- ♦ Otolaryngology medical specialist
- ♦ Member of the Royal Academy of Medicine of Salamanca
- ♦ Master's Degree in Time-Limited Psychotherapy and Health Psychology. Expert in Psychosomatic Medicine

**Dr. Martínez-Lorca, Manuela**

- ♦ Doctorate in Psychology from the University of Castilla-La Mancha
- ♦ Health Psychologist Lecturer in the Department of Psychology at the UCLM
- ♦ Master's Degree in Time-Limited Psychotherapy and Health Psychology by the European Institute of Time-Limited Psychotherapies
- ♦ Specialist in Clinical Hypnosis and Relaxation

**Dr. Martínez Lorca, Alberto**

- ♦ Specialist in Nuclear Medicine
- ♦ Specialist in nuclear medicine area at the Rey Juan Carlos-Quirón University Hospital
- ♦ International Residency in Turku PET Centre
- ♦ Turku University Hospital. Finland
- ♦ Medical Education Manager
- ♦ Master's Degree in Time-Limited Psychotherapy and Health Psychology
- ♦ Coaching V.E.C.
- ♦ Director of Neurological Studies at CEP in Madrid
- ♦ Specialist in Neurology of Dreams and their Disorders
- ♦ Disseminator for the children's population (Teddy Bear Hospital)

**Dr. Otero, Verónica**

- ♦ European specialist psychologist in Psychotherapy at the CEP health center in Bilbao
- ♦ Head of the children and youth area of intervention with PTL in the CEP of Bilbao
- ♦ Master's Degree in Time-Limited Psychotherapy and Health Psychology
- ♦ Child and Adolescent Specialist

**Dr. Roldán, Lucía**

- ♦ Health Psychologist
- ♦ Cognitive-behavioral intervention specialist
- ♦ Master's Degree in Time-Limited Psychotherapy and Health Psychology
- ♦ Expert in energy therapy intervention

04

# Structure and Content

The structure of the contents has been designed by the best professionals in the psychogeriatrics sector, with extensive experience and recognized prestige in the profession, backed by the volume of reviewed, studied and diagnosed cases, and with extensive knowledge of new technologies applied to education.



“

*We have the most complete specialization in the market. We strive for excellence and for you to achieve it too"*




## Module 1. Assessment of Health and Disease in the Elderly

- 1.1. Physical and Mental Health Aging
- 1.2. Physical Evaluation
  - 1.2.1. Medical History
  - 1.2.2. General Physical Examination
  - 1.2.3. Analysis
  - 1.2.4. Neurological Examination
  - 1.2.5. Other Explorations
- 1.3. Psychic Assessment
  - 1.3.1. Medical History
  - 1.3.2. Life History
  - 1.3.3. Cognitive Assessment
  - 1.3.4. Assessment of Memory and Attention
  - 1.3.5. Behavioral Assessment
  - 1.3.6. Evaluation of the Most Common Psychological Disorders in Old Age
- 1.4. Social Assessment
  - 1.4.1. Social Network Shared
  - 1.4.2. Belonging to a Group
  - 1.4.3. How Many Friends Do They Have at This Moment?
  - 1.4.4. How Many Friends Did They Previously Have?
  - 1.4.5. Economic Capacity
  - 1.4.6. Recent and Previous Relationships
  - 1.4.7. Social Implication
- 1.5. Physical Aging
- 1.6. Physical Activity
  - 1.6.1. Autonomy of Movement
  - 1.6.2. Capacity to Travel or Move Around
  - 1.6.3. Motor Coordination
  - 1.6.4. Level of Tiredness and Fatigue
  - 1.6.5. Daily Life Activities





- 
- 1.7. Mental Activity
    - 1.7.1. Ability to Read
    - 1.7.2. Ability to Have a Discussion
    - 1.7.3. Flexibility/Rigidity in Reasoning
    - 1.7.4. Creativity in Old Age
  - 1.8. Problem Solving Activities
    - 1.8.1. Ability to Maintain a Conversation
    - 1.8.2. Break Out of the Monologue
    - 1.8.3. Empathize
    - 1.8.4. Conflict Resolution
    - 1.8.5. Allow Win-Win Relationships

## Module 2. Aging from the Perspective of Personality Traits

- 2.1. Personality Studies and Theories on the Process of Aging
- 2.2. Social Dynamics and Role of the Elderly Person
- 2.3. Experiences and Current Research in Psychogeriatrics
- 2.4. Negative Changes in Personality:
  - 2.4.1. Egocentrism
  - 2.4.2. Dependency
  - 2.4.3. Dogmatism
  - 2.4.4. Stiffness
  - 2.4.5. Intolerance
  - 2.4.6. Disobedience
  - 2.4.7. Pessimism
  - 2.4.8. Impatience
  - 2.4.9. Disrespectful
  - 2.4.10. Insecure
  - 2.4.11. Gnarly
  - 2.4.12. Associable

- 2.5. Positive Changes in Personality
  - 2.5.1. Sincerity
  - 2.5.2. Calmness
  - 2.5.3. Unconcerned
  - 2.5.4. Discrete
  - 2.5.5. Straightforward
  - 2.5.6. Generous
  - 2.5.7. Tender
  - 2.5.8. Honest
  - 2.5.9. Humble
  - 2.5.10. Kind
  - 2.5.11. Confident
  - 2.5.12. Understanding
- 2.6. How Do Personality Disorders Affect the Elderly?
- 2.7. Research in Personality Disorders in Old Age
  - 2.7.1. Schizoid Personality Disorder
  - 2.7.2. Dependency-Based Personality Disorder
  - 2.7.3. Obsessive Compulsive Personality Disorder
  - 2.7.4. Narcissistic Personality Disorder
  - 2.7.5. Paranoid Personality Disorder
- 2.8. The Aging Process Improves or Worsens Personality Disorders
- 2.9. Situation for the Study and Evaluation of Personality Disorders in Old Age





### Module 3. Physiological and Neuropsychological Changes in the Elderly

- 3.1. Changes to the Nervous System
  - 3.1.1. Neuropsychological and Psychopathological Alterations in Old Age
  - 3.1.2. Characteristics in the Elderly that Affect Drug Intervention
- 3.2. Psychopathology and Neuropathology in Consciousness and Perception Disorders in the Elderly
  - 3.2.1. Biopsychosocial Factors in Life Fatigue
  - 3.2.2. Stress in the Daily Life of an Elderly Person
  - 3.2.3. Attention, Learning and Memory
  - 3.2.4. Helplessness
  - 3.2.5. Insulation
  - 3.2.6. Loneliness
  - 3.2.7. Boredom
  - 3.2.8. Neglect
  - 3.2.9. Suicide in Elderly People
- 3.3. Affective Disorders in Elderly People
- 3.4. Sleep Disorders in Elderly People



*A unique, crucial and decisive learning experience to boost your professional development"*



05

# Study Methodology

TECH is the world's first university to combine the **case study** methodology with **Relearning**, a 100% online learning system based on guided repetition.

This disruptive pedagogical strategy has been conceived to offer professionals the opportunity to update their knowledge and develop their skills in an intensive and rigorous way. A learning model that places students at the center of the educational process giving them the leading role, adapting to their needs and leaving aside more conventional methodologies.





“

*TECH will prepare you to face new challenges in uncertain environments and achieve success in your career”*

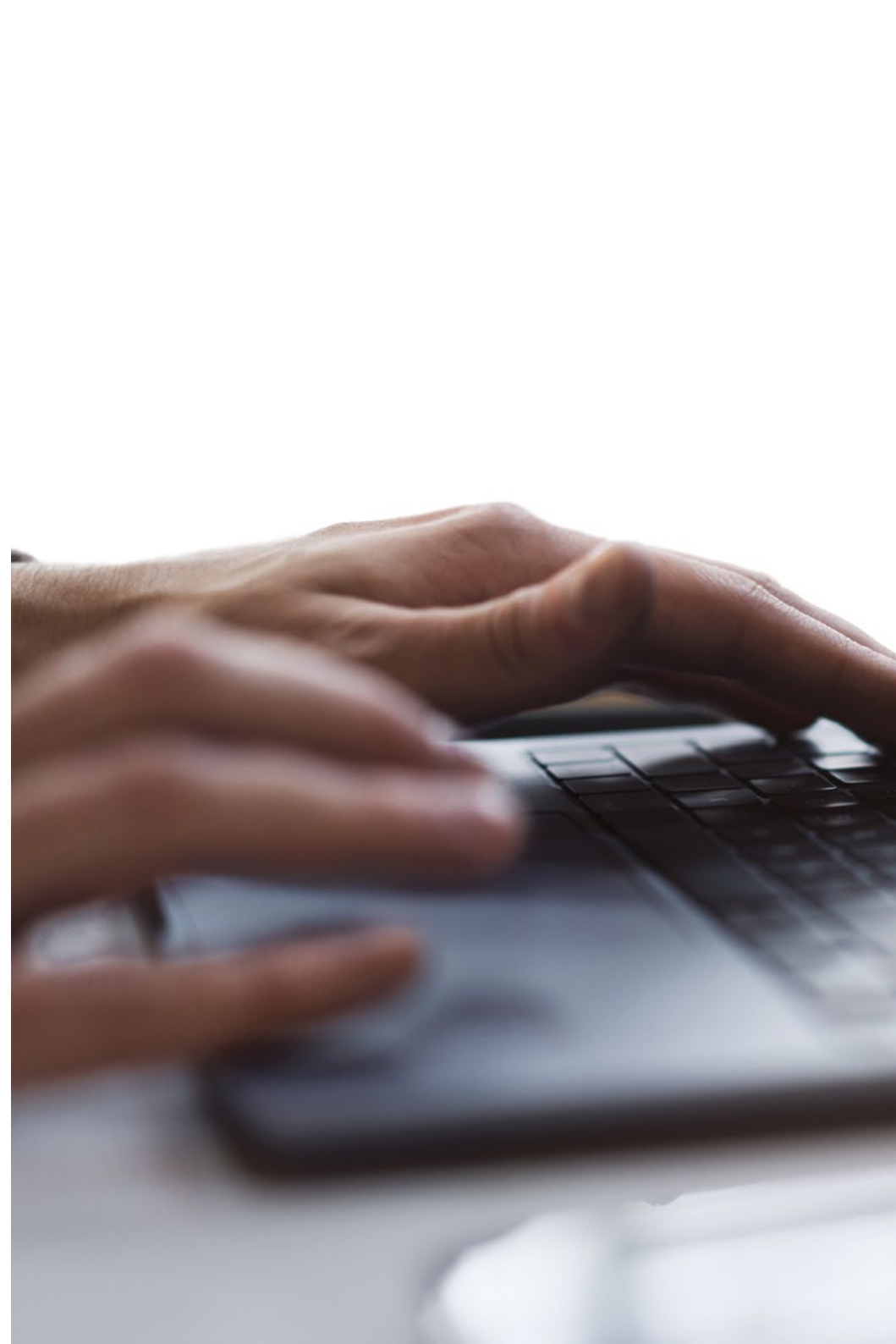
## The student: the priority of all TECH programs

In TECH's study methodology, the student is the main protagonist. The teaching tools of each program have been selected taking into account the demands of time, availability and academic rigor that, today, not only students demand but also the most competitive positions in the market.

With TECH's asynchronous educational model, it is students who choose the time they dedicate to study, how they decide to establish their routines, and all this from the comfort of the electronic device of their choice. The student will not have to participate in live classes, which in many cases they will not be able to attend. The learning activities will be done when it is convenient for them. They can always decide when and from where they want to study.

“

*At TECH you will NOT have live classes  
(which you might not be able to attend)”*



### The most comprehensive study plans at the international level

TECH is distinguished by offering the most complete academic itineraries on the university scene. This comprehensiveness is achieved through the creation of syllabi that not only cover the essential knowledge, but also the most recent innovations in each area.

By being constantly up to date, these programs allow students to keep up with market changes and acquire the skills most valued by employers. In this way, those who complete their studies at TECH receive a comprehensive education that provides them with a notable competitive advantage to further their careers.

And what's more, they will be able to do so from any device, pc, tablet or smartphone.

“*TECH's model is asynchronous, so it allows you to study with your pc, tablet or your smartphone wherever you want, whenever you want and for as long as you want*”



## Case Studies and Case Method

The case method has been the learning system most used by the world's best business schools. Developed in 1912 so that law students would not only learn the law based on theoretical content, its function was also to present them with real complex situations. In this way, they could make informed decisions and value judgments about how to resolve them. In 1924, Harvard adopted it as a standard teaching method.

With this teaching model, it is students themselves who build their professional competence through strategies such as Learning by Doing or Design Thinking, used by other renowned institutions such as Yale or Stanford.

This action-oriented method will be applied throughout the entire academic itinerary that the student undertakes with TECH. Students will be confronted with multiple real-life situations and will have to integrate knowledge, research, discuss and defend their ideas and decisions. All this with the premise of answering the question of how they would act when facing specific events of complexity in their daily work.





## Relearning Methodology

At TECH, case studies are enhanced with the best 100% online teaching method: Relearning.

This method breaks with traditional teaching techniques to put the student at the center of the equation, providing the best content in different formats. In this way, it manages to review and reiterate the key concepts of each subject and learn to apply them in a real context.

In the same line, and according to multiple scientific researches, reiteration is the best way to learn. For this reason, TECH offers between 8 and 16 repetitions of each key concept within the same lesson, presented in a different way, with the objective of ensuring that the knowledge is completely consolidated during the study process.

*Relearning will allow you to learn with less effort and better performance, involving you more in your specialization, developing a critical mindset, defending arguments, and contrasting opinions: a direct equation to success.*



## A 100% online Virtual Campus with the best teaching resources

In order to apply its methodology effectively, TECH focuses on providing graduates with teaching materials in different formats: texts, interactive videos, illustrations and knowledge maps, among others. All of them are designed by qualified teachers who focus their work on combining real cases with the resolution of complex situations through simulation, the study of contexts applied to each professional career and learning based on repetition, through audios, presentations, animations, images, etc.

The latest scientific evidence in the field of Neuroscience points to the importance of taking into account the place and context where the content is accessed before starting a new learning process. Being able to adjust these variables in a personalized way helps people to remember and store knowledge in the hippocampus to retain it in the long term. This is a model called Neurocognitive context-dependent e-learning that is consciously applied in this university qualification.

In order to facilitate tutor-student contact as much as possible, you will have a wide range of communication possibilities, both in real time and delayed (internal messaging, telephone answering service, email contact with the technical secretary, chat and videoconferences).

Likewise, this very complete Virtual Campus will allow TECH students to organize their study schedules according to their personal availability or work obligations. In this way, they will have global control of the academic content and teaching tools, based on their fast-paced professional update.



*The online study mode of this program will allow you to organize your time and learning pace, adapting it to your schedule”*

### The effectiveness of the method is justified by four fundamental achievements:

1. Students who follow this method not only achieve the assimilation of concepts, but also a development of their mental capacity, through exercises that assess real situations and the application of knowledge.
2. Learning is solidly translated into practical skills that allow the student to better integrate into the real world.
3. Ideas and concepts are understood more efficiently, given that the example situations are based on real-life.
4. Students like to feel that the effort they put into their studies is worthwhile. This then translates into a greater interest in learning and more time dedicated to working on the course.

## The university methodology top-rated by its students

The results of this innovative teaching model can be seen in the overall satisfaction levels of TECH graduates.

The students' assessment of the quality of teaching, quality of materials, course structure and objectives is excellent. Not surprisingly, the institution became the best rated university by its students on the Trustpilot review platform, obtaining a 4.9 out of 5.

*Access the study contents from any device with an Internet connection (computer, tablet, smartphone) thanks to the fact that TECH is at the forefront of technology and teaching.*

*You will be able to learn with the advantages that come with having access to simulated learning environments and the learning by observation approach, that is, Learning from an expert.*



As such, the best educational materials, thoroughly prepared, will be available in this program:



### Study Material

All teaching material is produced by the specialists who teach the course, specifically for the course, so that the teaching content is highly specific and precise.

This content is then adapted in an audiovisual format that will create our way of working online, with the latest techniques that allow us to offer you high quality in all of the material that we provide you with.



### Practicing Skills and Abilities

You will carry out activities to develop specific competencies and skills in each thematic field. Exercises and activities to acquire and develop the skills and abilities that a specialist needs to develop within the framework of the globalization we live in.



### Interactive Summaries

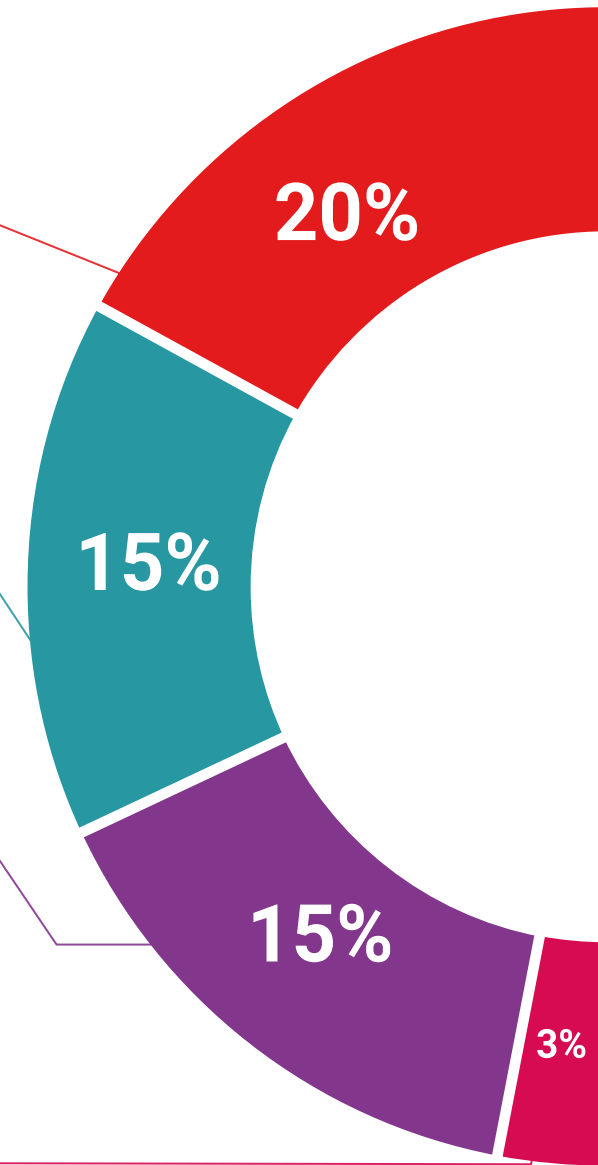
We present the contents attractively and dynamically in multimedia lessons that include audio, videos, images, diagrams, and concept maps in order to reinforce knowledge.

This exclusive educational system for presenting multimedia content was awarded by Microsoft as a "European Success Story".

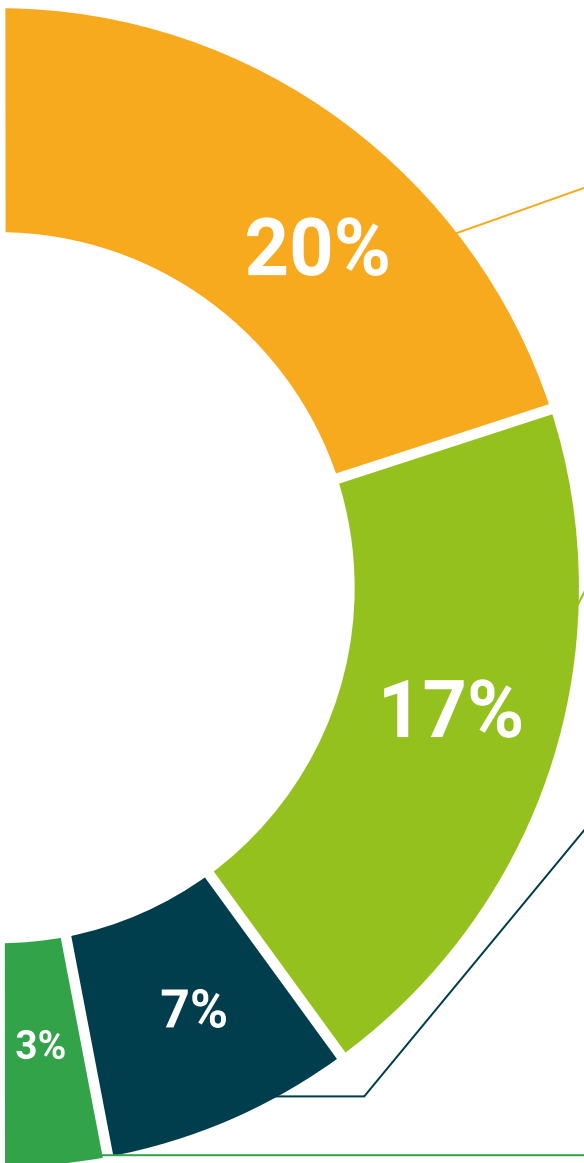


### Additional Reading

Recent articles, consensus documents, international guides... In our virtual library you will have access to everything you need to complete your education.







### Case Studies

Students will complete a selection of the best case studies in the field. Cases that are presented, analyzed, and supervised by the best specialists in the world.



### Testing & Retesting

We periodically assess and re-assess your knowledge throughout the program. We do this on 3 of the 4 levels of Miller's Pyramid.



### Classes

There is scientific evidence suggesting that observing third-party experts can be useful.

Learning from an expert strengthens knowledge and memory, and generates confidence for future difficult decisions.



### Quick Action Guides

TECH offers the most relevant contents of the course in the form of worksheets or quick action guides. A synthetic, practical and effective way to help students progress in their learning.



06

# Certificate

The Postgraduate Diploma in Assessment and Psychodiagnosis in the Elderly for Nursing guarantees students, in addition to the most rigorous and up-to-date education, access to a Postgraduate Diploma issued by TECH Global University.



“

*Successfully complete this program and receive your university qualification without having to travel or fill out laborious paperwork”*

This private qualification will allow you to obtain a **Postgraduate Diploma in Assessment and Psychodiagnosis in the Elderly for Nursing** endorsed by **TECH Global University**, the world's largest online university.

**TECH Global University** is an official European University publicly recognized by the Government of Andorra ([official bulletin](#)). Andorra is part of the European Higher Education Area (EHEA) since 2003. The EHEA is an initiative promoted by the European Union that aims to organize the international training framework and harmonize the higher education systems of the member countries of this space. The project promotes common values, the implementation of collaborative tools and strengthening its quality assurance mechanisms to enhance collaboration and mobility among students, researchers and academics.

This **TECH Global University** private qualification is a European program of continuing education and professional updating that guarantees the acquisition of competencies in its area of knowledge, providing a high curricular value to the student who completes the program.

Title: **Postgraduate Diploma in Assessment and Psychodiagnosis in the Elderly for Nursing**

Modality: **online**

Duration: **6 months**

Accreditation: **19 ECTS**







## Postgraduate Diploma Assessment and Psychodiagnosis in the Elderly for Nursing

- » Modality: online
- » Duration: 6 months
- » Certificate: TECH Global University
- » Accreditation: 19 ECTS
- » Schedule: at your own pace
- » Exams: online

# Postgraduate Diploma

## Assessment and Psychodiagnosis in the Elderly for Nursing

