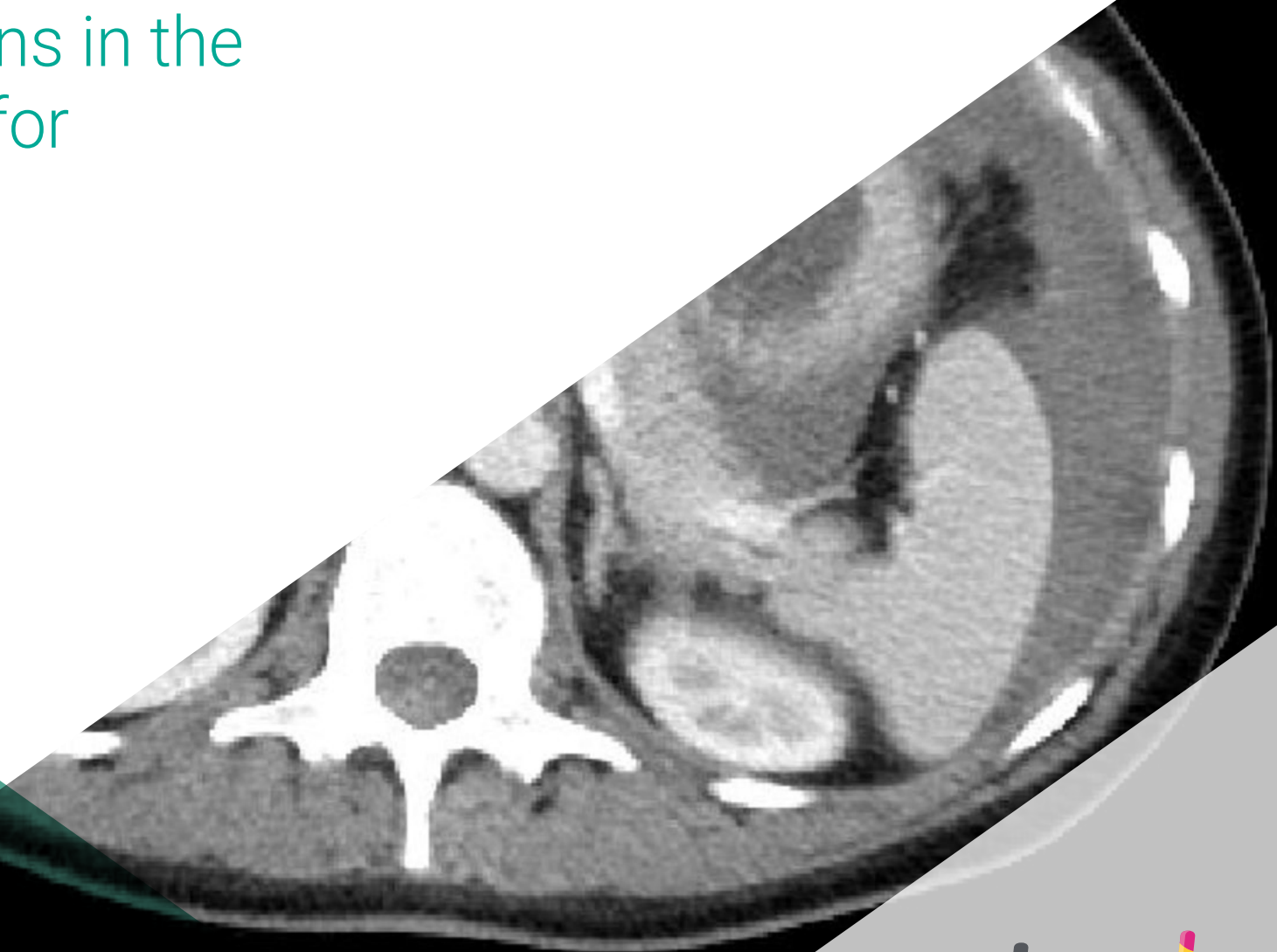


# Postgraduate Certificate

## Risk Situations in the Puerperium for Midwives





## Postgraduate Certificate Risk Situations in the Puerperium for Midwives

- » Modality: online
- » Duration: 6 weeks
- » Certificate: TECH Global University
- » Credits: 6 ECTS
- » Schedule: at your own pace
- » Exams: online

Website: [www.techtute.com/us/nursing/postgraduate-certificate/risk-situations-puerperium-midwives](http://www.techtute.com/us/nursing/postgraduate-certificate/risk-situations-puerperium-midwives)

# Index

01

Introduction

---

*p. 4*

02

Objectives

---

*p. 8*

03

Course Management

---

*p. 12*

04

Structure and Content

---

*p. 16*

05

Methodology

---

*p. 20*

06

Certificate

---

*p. 28*

# 01

# Introduction

The care of the woman and baby in the labor and delivery environment implies the possibility of the occurrence of various problems of varying severity, which can manifest even in low risk deliveries. The rapid and accurate identification of these problems and their management by the practitioner is crucial to ensure the safety of mother and baby. In this program we offer you the most updated knowledge in this area, with a vision focused on practice that will qualify you to intervene with the essential quality care.







“

*A high quality teaching diploma  
created to boost your midwifery  
skills in a quick and easy way”*

Thus, the main complications that may arise in the puerperium are reviewed, with emphasis on the identification of the clinic, the risk factors of these complications, the treatment and care of the midwife in each one of them.

Although in some hospitals it is less common to work with high risk patients or with associated pathologies in the puerperium it is essential for the midwife to be familiar with the pathological processes during this stage.

This module is of particular interest to midwives who work at the health center, as they are the first professional to assess the woman when she leaves the hospital and play a key role in the early detection of postpartum complications, both physical and mental.

Taking into account the importance of postpartum perineal trauma in puerperal management, both because of its high incidence and because of the implications it has on the physical and psychological health of the postpartum mother, it will only be listed in this module, since it will be developed extensively in the following module.

Both the design of the program and the didactic material used will facilitate the understanding of concepts, and the realization of practical cases will help to adapt what has been learned to clinical practice. In this way, the Postgraduate Certificate will provide immersive learning in order to train professionals in real situations of their daily professional practice.

This **Postgraduate Certificate in Risk Situations in the Puerperium for Midwives** contains the most complete and up to date scientific program on the market. The most important features of the program include:

- ♦ The development of case studies presented by Puerperium experts
- ♦ The graphic, schematic, and eminently practical contents with which they are created, provide scientific and practical information on the disciplines that are essential for professional practice.
- ♦ News about the puerperium period
- ♦ Practical exercises where the self assessment process can be carried out to improve learning
- ♦ Special emphasis on innovative methodologies in the Puerperium
- ♦ Theoretical lessons, questions to the expert, debate forums on controversial topics, and individual reflection assignments
- ♦ Access to content from any fixed or portable device with an Internet connection



*Update your knowledge and boost your capacity as an indispensable support in the postpartum period with this exceptional training"*



*A high impact step for your career path that will place you among the best trained in the industry"*

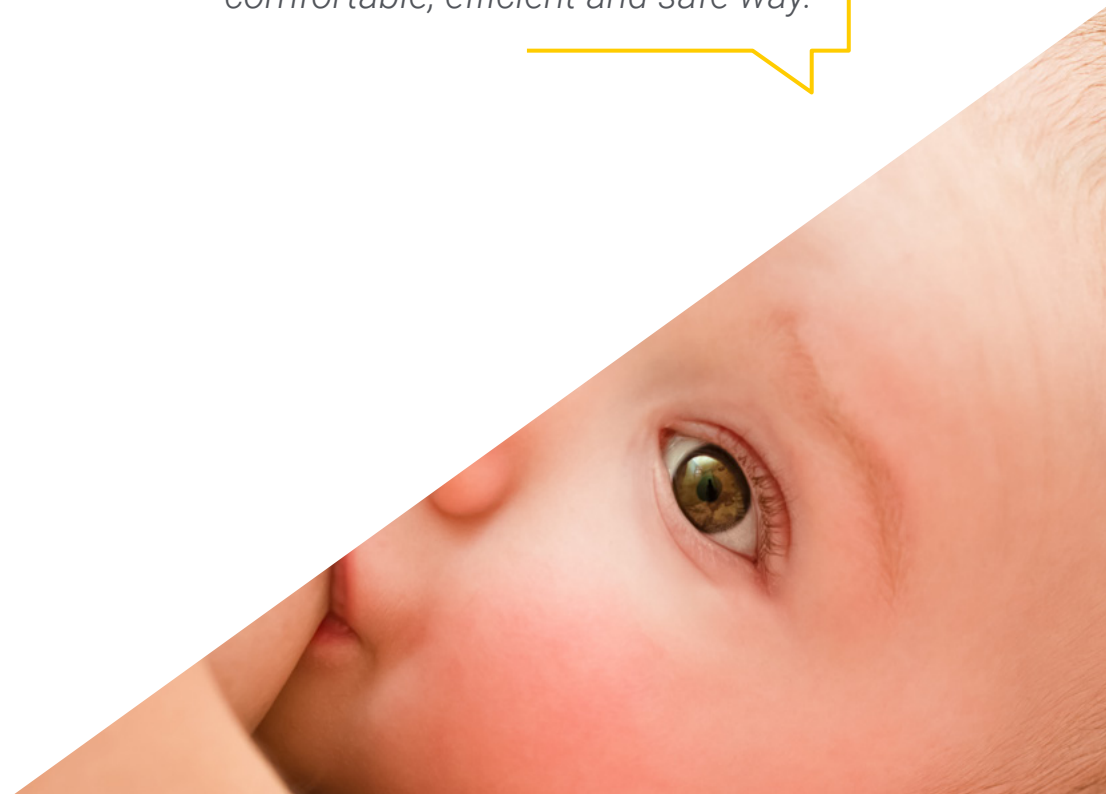
The teaching staff includes professionals from the field Puerperium, who bring their experience to this training program, as well as renowned specialists from leading societies and prestigious universities.

The multimedia content, developed with the latest educational technology, will provide the professional with situated and contextual learning, i.e., a simulated environment that will provide immersive training programmed to train in real situations.

This program is designed around Problem Based Learning, whereby the specialist must try to solve the different professional practice situations that arise during the academic year. For this purpose, the professional will be assisted by an innovative system of interactive videos made by recognized experts, with great experience in Risk Situations in the Puerperium for Midwives.

*The best didactic material at your disposal throughout the learning process, both on and offline.*

*The best online training resources that will allow you to combine your studies with your professional work in a comfortable, efficient and safe way.*





# 02 Objectives

The Postgraduate Certificate in Risk Situations in the Puerperium for Midwives is oriented to train midwives in their daily work during the care of women in the puerperium period.







“

*The objective of this training is to offer a complete update in the detection and approach to problems that may occur during the postpartum period for the mother and baby, in a specific diploma course for midwives"*



## General Objectives

---

- ♦ Update and expand the midwife's knowledge in the field of postpartum care in the hospital, in the health center and at home
- ♦ Obtain an integrated vision of the care required by women and their children during the Puerperium
- ♦ Understand the puerperium phase from a global and biopsychosocial point of view
- ♦ Facilitate the performance of the midwife dedicated to the care of the woman and the newborn in the postpartum phase
- ♦ Help provide quality postpartum care based on scientific evidence
- ♦ Contribute to the midwife's decision making in situations that deviate from normality
- ♦ Have the tools to achieve a multidisciplinary management in the puerperium
- ♦ Acquire the professional competencies necessary to offer a quality and updated healthcare practice
- ♦ Apply the knowledge obtained to solve problems that may arise in health care practice





## Specific Objectives

---

- ♦ Increase knowledge about the complications that may arise during the different stages of the puerperium
- ♦ Specific management of women's pathology in the Puerperium
- ♦ Improve the midwife's ability to act in the early management of the main complications that may appear during the puerperium
- ♦ Improve the midwife's ability to apply care in each of the pathologies in the puerperium from the hospital care setting and in the primary care office
- ♦ Know and manage perineal trauma caused by vaginal delivery
- ♦ Demonstrate competency in the application of midwifery care in perineal trauma



*Update your knowledge through the program Risk Situations in the Puerperium for Midwives"*



03

# Course Management

The program includes in its teaching staff reference experts in Puerperium, who bring to this training the experience of their work. Additionally, other recognized specialists participate in its design and preparation which means that the program is developed in an interdisciplinary manner.



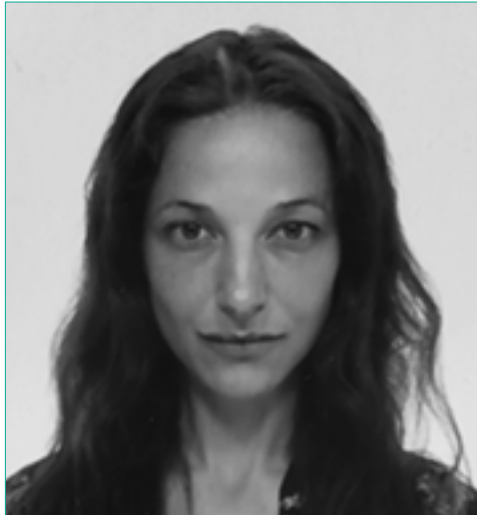




“

*Expert teachers in puerperium will be your teachers in this Postgraduate Certificate, putting at your service the real, current and complete experience you need to grow in your profession"*

## Management



### Ms. Grolimund Sánchez, Verónica

- ◆ Midwife at HGU Doctor Gregorio Marañón, Madrid Specialized in high-risk pregnancy and childbirth
- ◆ Diploma in Nursing from the Autonomous University of Madrid Red Cross School of Nursing
- ◆ Nurse Specialist in Obstetrics and Gynecology
- ◆ Professor in the Obstetrics and Gynecology Nursing Teaching Unit at HGU Gregorio Marañón since 2013
- ◆ Teaching collaborator at HGU Gregorio Marañón, tutoring and supervising EIR rotations in Family and Community Care
- ◆ Lecturer in the Practical Course on Obstetric Emergencies Obstetric Hemorrhage
- ◆ Nurse in special services such as emergency, URPA, ICU and neonatal ICU



### Ms. Pallarés Jiménez, Noelia

- ◆ Midwife Gregorio Marañón University Hospital
- ◆ University Diploma in Nursing from the University of Zaragoza
- ◆ Specialty in Obstetric-Gynecological Nursing (Midwife) at the Midwifery Teaching Unit of Catalonia, University of Barcelona
- ◆ Postgraduate in Sexual Health Educational and Community Intervention University of Lérida Foundation
- ◆ Collaborating professor at the Midwifery Resident Teaching Unit of the General University Hospital Gregorio Marañón as an expert in the area of maternal and newborn nursing
- ◆ Primary Care Midwife In Barcelona, Catalan Institute of Health
- ◆ Midwife at the University Hospital Clinic of Barcelona
- ◆ Obstetric-Gynecological Specialty at the Germans Trias i Pujol Hospital in Badalona as resident midwife
- ◆ Nurse in the puerperium ward at the Miguel Servet University Hospital in Zaragoza



## Professors

### Mr. Burgueño Antón, Adrián

- ♦ Specialist in Gynecology and Obstetrics. Supervisor in Maternal and Child Surgical Block at Hospital Universitario La Paz

### Ms. García Rodríguez, Laura

- ♦ Matron Goya Health Center

### Ms. Gutiérrez Munuera, Marta

- ♦ Midwife Infanta Leonor Hospital

### Ms. Hernando Orejudo, Isabel

- ♦ Matron University Hospital Clínico San Carlos in Obstetric Emergency Units, Delivery Room, High Obstetric Risk, Fetal Physiopathology and Breastfeeding

### Ms. López Collado, Irene

- ♦ Obstetric Gynecological Nurse

### Ms. Matesanz Jete, Consuelo

- ♦ Midwife General Hospital of Segovia
- ♦ Nurse specialized in Obstetrics and Gynecology

### Ms. Martín Jiménez, Beatriz

- ♦ Midwife in the delivery room and obstetric emergency services Getafe University Hospital

### Ms. Ramírez Sánchez-Carnerero, Rosa María

- ♦ Matron Virgen de Altagracia de Manzanares Hospital

### Ms. Sánchez Boza, Pilar

- ♦ Nurse specialized in Obstetrics and Gynecology

### Ms. Triviño de la Cal, Cristina

- ♦ Specialist in Gynecology and Obstetrics. Yébenes Health Center, Madrid



# 04

# Structure and Content

The structure of the contents has been designed by the best professionals in the sector. Midwives with extensive experience and recognized prestige in the profession, backed by the volume of cases reviewed, studied and diagnosed, and with extensive knowledge of new technologies applied to health.





“

*This Postgraduate Certificate in Risk Situations in the Puerperium for Midwives contains the most complete and up to date scientific program on the market”*

## Module 1. Risk Situations in the Puerperium

- 1.1. Postpartum Hemorrhage
  - 1.1.1. Concept, Classification, and Risk Factors
  - 1.1.2. Etiology
    - 1.1.2.1. Uterine Tone Disturbances
    - 1.1.2.2. Tissue Retention
    - 1.1.2.3. Trauma to the Birth Canal
    - 1.1.2.4. Coagulation Alterations
  - 1.1.3. Clinic and Management of Puerperal Hemorrhage
    - 1.1.3.1. Assessment and Quantification of Hemorrhage
    - 1.1.3.2. Medical and Surgical Treatment
    - 1.1.3.3. Midwifery Care
- 1.2. Infections in the Puerperium
  - 1.2.1. Puerperal Endometritis
  - 1.2.2. Perineal Infection
  - 1.2.3. Abdominal Wall Infection
  - 1.2.4. Mastitis
  - 1.2.5. Sepsis. Lethal Septic Shock Syndrome Staphylococcal or Streptococcal Toxic Shock
- 1.3. Thromboembolic Disease, Heart Disease and Severe Anemia in the Puerperium
  - 1.3.1. Thromboembolic Disease in the Puerperium
    - 1.3.1.1. Venous Thrombosis: Superficial, Deep and Pelvic
    - 1.3.1.2. Pulmonary Embolism
  - 1.3.2. Heart Disease in the Puerperium
  - 1.3.3. Severe Anemia in the Puerperium
- 1.4. Arterial Hypertension, Preeclampsia and HELLP in the Puerperium
  - 1.4.1. Management of the Woman with Arterial Hypertension in the Puerperium
  - 1.4.2. Management of Women in the Puerperium after Preeclampsia
  - 1.4.3. Management of Women in the Puerperium after HELLP



- 1.5. Endocrine Pathology in the Puerperium
  - 1.5.1. Management of the Woman with Gestational Diabetes in the Puerperium
  - 1.5.2. Thyroid Pathology in the Puerperium
  - 1.5.3. Sheehan Syndrome
- 1.6. Digestive and Urinary Pathology
  - 1.6.1. Main Digestive Pathology Conditions in the Puerperium
    - 1.6.1.1. Crohn's Disease and Ulcerative Colitis
    - 1.6.1.2. Fatty Liver
    - 1.6.1.3. Cholestasis
  - 1.6.2. Urinary Pathology in the Puerperium
    - 1.6.2.1. Urinary Infections
    - 1.6.2.2. Postpartum Urinary Retention
    - 1.6.2.3. Urinary Incontinence
- 1.7. Autoimmune, Neurological and Neuromuscular Diseases in the Puerperium
  - 1.7.1. Autoimmune Diseases in the Puerperium: Lupus
  - 1.7.2. Neurological and Neuromuscular Pathology in the Puerperium
    - 1.7.2.1. Post-puncture Headache
    - 1.7.2.2. Epilepsy
    - 1.7.2.3. Cerebrovascular Diseases (Subarachnoid Hemorrhage, Aneurysms, Cerebral Neoplasms)
    - 1.7.2.4. Amyotrophic Lateral Sclerosis
    - 1.7.2.5. Myasthenia Gravis
- 1.8. Infectious Diseases in the Puerperium
  - 1.8.1. Hepatitis B Virus Infection
    - 1.8.1.1. Management of the Postpartum Woman with Hepatitis B Virus Infection
    - 1.8.1.2. Care and Monitoring of the Newborn of a Mother with Hepatitis B Virus Infection
  - 1.8.2. Hepatitis C Virus Infection
    - 1.8.2.1. Management of the Postpartum Woman with Hepatitis C Virus Infection
    - 1.8.2.2. Care and Monitoring of the Newborn of a Mother with Hepatitis C Virus Infection
  - 1.8.3. Human Immunodeficiency Virus Infection
    - 1.8.3.1. Management of the Postpartum Woman with HIV Infection
    - 1.8.3.2. Care and Monitoring of Newborns Born to HIV-Positive Mothers
- 1.9. Perineal Trauma and Abdominal Scar Dehiscence after Caesarean Section
  - 1.9.1. Perineal Tears: Degrees of Tearing and Care
  - 1.9.2. Episiotomy: Types and Midwifery Care
  - 1.9.3. Abdominal Scar Dehiscence after Caesarean Section: Midwifery Care
  - 1.9.4. Perineal Hematomas
- 1.10. Psychiatric Illness
  - 1.10.1 Postpartum Depression (PPD)
    - 1.10.1.1. Definition, Etiology, Detection of PPD
    - 1.10.1.2. Medical Treatment and Midwifery Care
  - 1.10.2 Puerperal Psychosis
    - 1.10.2.1. Definition, Etiology, Detection of Puerperal Psychosis
    - 1.10.2.2. Medical Treatment and Midwifery Care



*This training will allow you to  
advance in your career comfortably"*

# 05 Methodology

This academic program offers students a different way of learning. Our methodology uses a cyclical learning approach: **Relearning**.

This teaching system is used, for example, in the most prestigious medical schools in the world, and major publications such as the **New England Journal of Medicine** have considered it to be one of the most effective.







“

*Discover Relearning, a system that abandons conventional linear learning, to take you through cyclical teaching systems: a way of learning that has proven to be extremely effective, especially in subjects that require memorization"*

## At TECH Nursing School we use the Case Method

In a given situation, what should a professional do? Throughout the program, students will face multiple simulated clinical cases, based on real patients, in which they will have to do research, establish hypotheses, and ultimately resolve the situation. There is an abundance of scientific evidence on the effectiveness of the method. Nurses learn better, faster, and more sustainably over time.

*With TECH, nurses can experience a learning methodology that is shaking the foundations of traditional universities around the world.*



According to Dr. Gervas, the clinical case is the annotated presentation of a patient, or group of patients, which becomes a "case", an example or model that illustrates some peculiar clinical component, either because of its teaching power or because of its uniqueness or rarity. It is essential that the case is based on current professional life, in an attempt to recreate the real conditions in professional nursing practice.

“

*Did you know that this method was developed in 1912, at Harvard, for law students? The case method consisted of presenting students with real-life, complex situations for them to make decisions and justify their decisions on how to solve them. In 1924, Harvard adopted it as a standard teaching method”*

The effectiveness of the method is justified by four fundamental achievements:

1. Nurses who follow this method not only grasp concepts, but also develop their mental capacity, by evaluating real situations and applying their knowledge.
2. The learning process has a clear focus on practical skills that allow the nursing professional to better integrate knowledge acquisition into the hospital setting or primary care.
3. Ideas and concepts are understood more efficiently, given that the example situations are based on real-life.
4. Students like to feel that the effort they put into their studies is worthwhile. This then translates into a greater interest in learning and more time dedicated to working on the course.





## Relearning Methodology

At TECH we enhance the case method with the best 100% online teaching methodology available: Relearning.

This university is the first in the world to combine case studies with a 100% online learning system based on repetition combining a minimum of 8 different elements in each lesson, which is a real revolution compared to the simple study and analysis of cases.



*The nurse will learn through real cases and by solving complex situations in simulated learning environments. These simulations are developed using state-of-the-art software to facilitate immersive learning.*

At the forefront of world teaching, the Relearning method has managed to improve the overall satisfaction levels of professionals who complete their studies, with respect to the quality indicators of the best online university (Columbia University).

With this methodology we have trained more than 175,000 nurses with unprecedented success in all specialities regardless of practical workload. Our pedagogical methodology is developed in a highly competitive environment, with a university student body with a strong socioeconomic profile and an average age of 43.5 years old.

*Relearning will allow you to learn with less effort and better performance, involving you more in your specialization, developing a critical mindset, defending arguments, and contrasting opinions: a direct equation to success.*

In our program, learning is not a linear process, but rather a spiral (learn, unlearn, forget, and re-learn). Therefore, we combine each of these elements concentrically.

The overall score obtained by TECH's learning system is 8.01, according to the highest international standards.



This program offers the best educational material, prepared with professionals in mind:



### Study Material

All teaching material is produced by the specialists who teach the course, specifically for the course, so that the teaching content is really specific and precise.

These contents are then applied to the audiovisual format, to create the TECH online working method. All this, with the latest techniques that offer high quality pieces in each and every one of the materials that are made available to the student.



### Nursing Techniques and Procedures on Video

We introduce you to the latest techniques, to the latest educational advances, to the forefront of current medical techniques. All of this in direct contact with students and explained in detail so as to aid their assimilation and understanding. And best of all, you can watch them as many times as you want.



### Interactive Summaries

The TECH team presents the contents attractively and dynamically in multimedia lessons that include audio, videos, images, diagrams, and concept maps in order to reinforce knowledge.

This exclusive educational system for presenting multimedia content was awarded by Microsoft as a "European Success Story".



### Additional Reading

Recent articles, consensus documents and international guidelines, among others. In TECH's virtual library, students will have access to everything they need to complete their course.







#### Expert-Led Case Studies and Case Analysis

Effective learning ought to be contextual. Therefore, TECH presents real cases in which the expert will guide students, focusing on and solving the different situations: a clear and direct way to achieve the highest degree of understanding.



#### Testing & Retesting

We periodically evaluate and re-evaluate students' knowledge throughout the program, through assessment and self-assessment activities and exercises, so that they can see how they are achieving their goals.



#### Classes

There is scientific evidence suggesting that observing third-party experts can be useful.

Learning from an Expert strengthens knowledge and memory, and generates confidence in future difficult decisions.



#### Quick Action Guides

TECH offers the most relevant contents of the course in the form of worksheets or quick action guides. A synthetic, practical, and effective way to help students progress in their learning.



06

# Certificate

The Postgraduate Certificate in Risk Situations in the Puerperium for Midwives, in addition to the most rigorous and up to date training, access to a Postgraduate Certificate issued by TECH Global University.





“

*Successfully complete this training  
and receive your diploma without  
travel or laborious paperwork”*



This private qualification will allow you to obtain a **Postgraduate Certificate in Risk Situations in the Puerperium for Midwives** endorsed by **TECH Global University**, the world's largest online university.

**TECH Global University** is an official European University publicly recognized by the Government of Andorra ([official bulletin](#)). Andorra is part of the European Higher Education Area (EHEA) since 2003. The EHEA is an initiative promoted by the European Union that aims to organize the international training framework and harmonize the higher education systems of the member countries of this space. The project promotes common values, the implementation of collaborative tools and strengthening its quality assurance mechanisms to enhance collaboration and mobility among students, researchers and academics.

This **TECH Global University** private qualification is a European program of continuing education and professional updating that guarantees the acquisition of competencies in its area of knowledge, providing a high curricular value to the student who completes the program.

Title: **Postgraduate Certificate in Risk Situations in the Puerperium for Midwives**

Modality: **online**

Duration: **6 weeks**

Accreditation: **6 ECTS**



\*Apostille Convention. In the event that the student wishes to have their paper diploma issued with an apostille, TECH Global University will make the necessary arrangements to obtain it, at an additional cost.

future  
health confidence people  
education information tutors  
guarantee accreditation teaching  
institutions technology learning  
community commitment  
personalized service innovation  
knowledge present  
online training  
development language  
classroom



**Postgraduate Certificate**  
Risk Situations in the  
Puerperium for Midwives

- » Modality: online
- » Duration: 6 weeks
- » Certificate: TECH Global University
- » Credits: 6 ECTS
- » Schedule: at your own pace
- » Exams: online

# Postgraduate Certificate

## Risk Situations in the Puerperium for Midwives

