

# Hybrid Professional Master's Degree Obstetrics for Midwives



## Hybrid Professional Master's Degree Obstetrics for Midwives

Modality: Hybrid (Online + Clinical Internship)

Duration: 12 months

Certificate: TECH Technological University

Teaching Hours: 1,620 h.

Website: [www.techtitute.com/us/nursing/hybrid-professional-master-degree/hybrid-professional-master-degree-obstetrics-midwives](http://www.techtitute.com/us/nursing/hybrid-professional-master-degree/hybrid-professional-master-degree-obstetrics-midwives)

# Index

01

Introduction

---

p. 4

02

Why Study this Hybrid  
Professional Master's Degree?

---

p. 8

03

Objectives

---

p. 12

04

Skills

---

p. 16

05

Course Management

---

p. 20

06

Educational Plan

---

p. 28

07

Clinical Internship

---

p. 36

08

Where Can I Do the Clinical  
Internship?

---

p. 42

09

Methodology

---

p. 48

10

Certificate

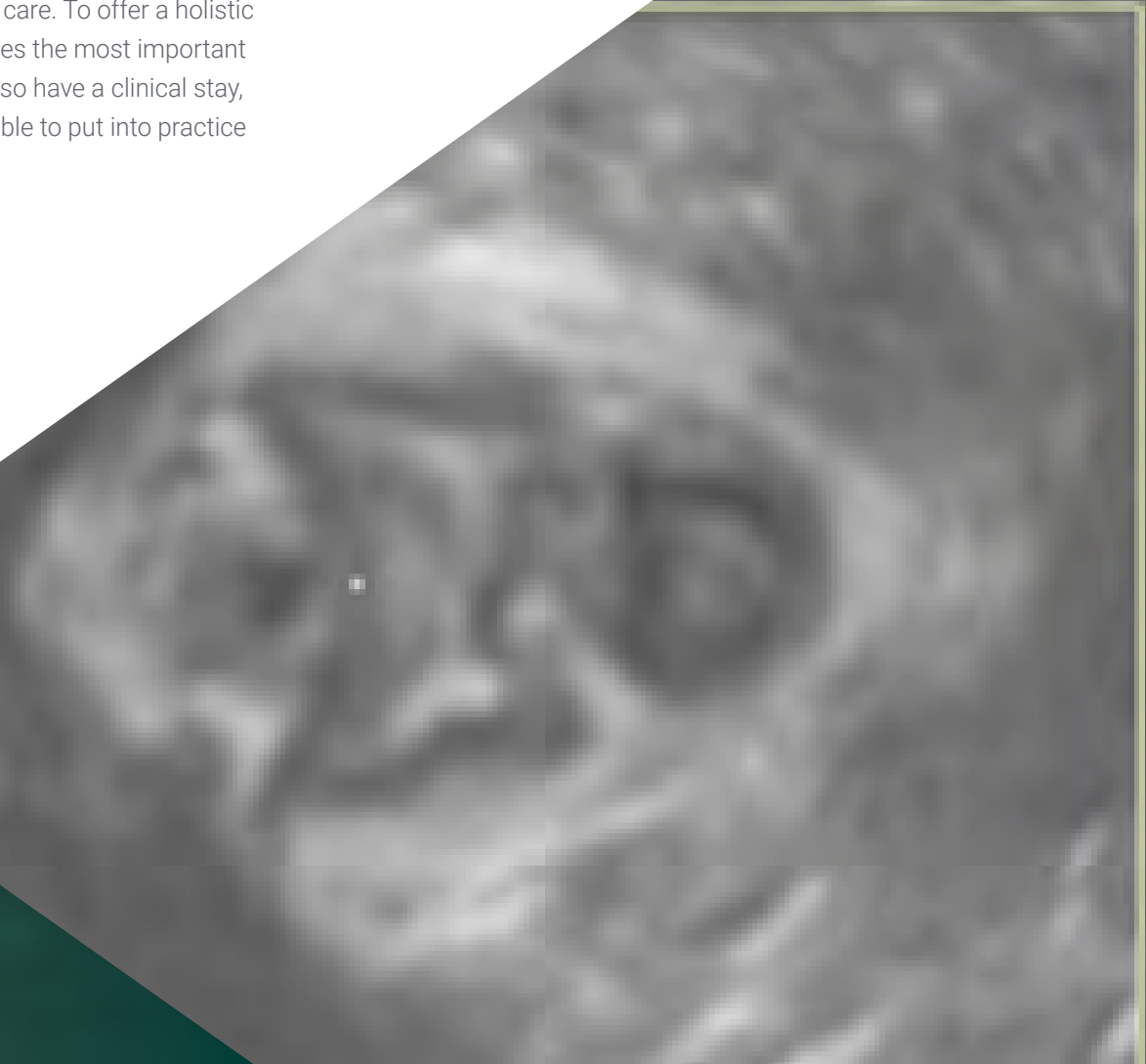
---

p. 56

# 01

# Introduction

Delivery care should be based on the principles of humanization, fetal control and pain relief, achieving the best patient outcomes. Midwives have become the main health care providers at the service of pregnant women during this process, as they are in constant contact with them, providing them with the necessary care. To offer a holistic update, TECH has designed this academic program that compiles the most important and innovative theory in this field. In addition, the midwife will also have a clinical stay, which will take place in a reference hospital where they will be able to put into practice everything they have learned, attending to real patients.



A	B
C	3D

“

*Get up-to-date in the most advanced obstetrics for the correct management of women during pregnancy and labor"*

Many midwives and health professionals wish to expand their knowledge and skills in the field of obstetrics in order to provide specialized and quality care to women during pregnancy, labor and delivery, and the postpartum period. However, they find it difficult to find educational programs that suit their needs, especially those that offer flexibility and allow them to combine theoretical learning with clinical practice.

For this reason, TECH has created the Hybrid Professional Master's Degree in Obstetrics for Midwives, which emerges as the ideal solution for these professionals who are looking to update their skills. This innovative and comprehensive program combines the convenience of online learning with the opportunity to gain practical experience in a privileged clinical setting.

During the Hybrid Professional Master's Degree in Obstetrics for Midwives, participants will be immersed in a rigorous and up-to-date syllabus that covers all key aspects of midwifery. Through a combination of online classes, interactive teaching materials and practical activities, midwives will acquire in-depth knowledge of obstetric procedures, prenatal and postnatal care, delivery care and emergency management.

The Hybrid Professional Master's Degree in Obstetrics for Midwives offers the flexibility necessary for participants to combine their instruction with their professional and personal responsibilities. With adjusted schedules, they will be able to access the online content at a time that is most convenient for them, as well as to conduct an internship in leading health centers and hospitals. Throughout this process they will be accompanied by a team of experts in the area, who will guide and advise them throughout the clinical practices.

This **Hybrid Professional Master's Degree in Obstetrics for Midwives** contains the most complete and up-to-date scientific program on the market. The most important features include:

- ◆ Development of more than 100 clinical cases presented by expert obstetrical nurses
- ◆ The graphic, schematic, and practical contents with which they are created, provide scientific and practical information on the disciplines that are essential for professional practice
- ◆ Acquire in-depth knowledge of obstetrical procedures, prenatal and postnatal care, labor management and emergency situations
- ◆ Consolidate specific obstetric skills through direct experience
- ◆ Keep up to date on the latest research, technological advances and best practices in the field of obstetrics
- ◆ Improve communication with pregnant women and their families, establishing relationships of trust and empathy
- ◆ Promote patient-centered care, taking into account the patient's needs, values and preferences
- ◆ All this will be complemented by theoretical lessons, questions to the expert, debate forums on controversial topics, and individual reflection assignments
- ◆ Content that is accessible from any fixed or portable device with an Internet connection
- ◆ In addition, you will be able to complete a clinical internship in one of the best hospitals in the country

“

*Complete a 3-week intensive internship at a prestigious center and acquire all the knowledge you need to grow personally and professionally”*

In this proposal for a Hybrid Professional Master's Degree, of a professionalizing nature and online format, the program is aimed at updating nursing professionals who perform their functions in intensive care units, and who require a high level of qualification. The contents are based on the latest scientific evidence, and oriented in a educational way to integrate theoretical Nurse practice, and the theoretical-practical elements will facilitate the updating of knowledge and will allow decision making in the patient management.

Thanks to the multimedia content, developed with the latest educational technology, nursing professionals will benefit from situated and contextual learning, i.e., a simulated environment that will provide immersive learning programmed to train in real situations. This program is designed around Problem-Based Learning, whereby the physician must try to solve the different professional practice situations that arise during the course. For this purpose, the students will be assisted by an innovative interactive video system created by renowned and experienced experts.

*This Hybrid Professional Master's Degree allows you to exercise in simulated environments, which provide immersive learning programmed to train in real situations.*

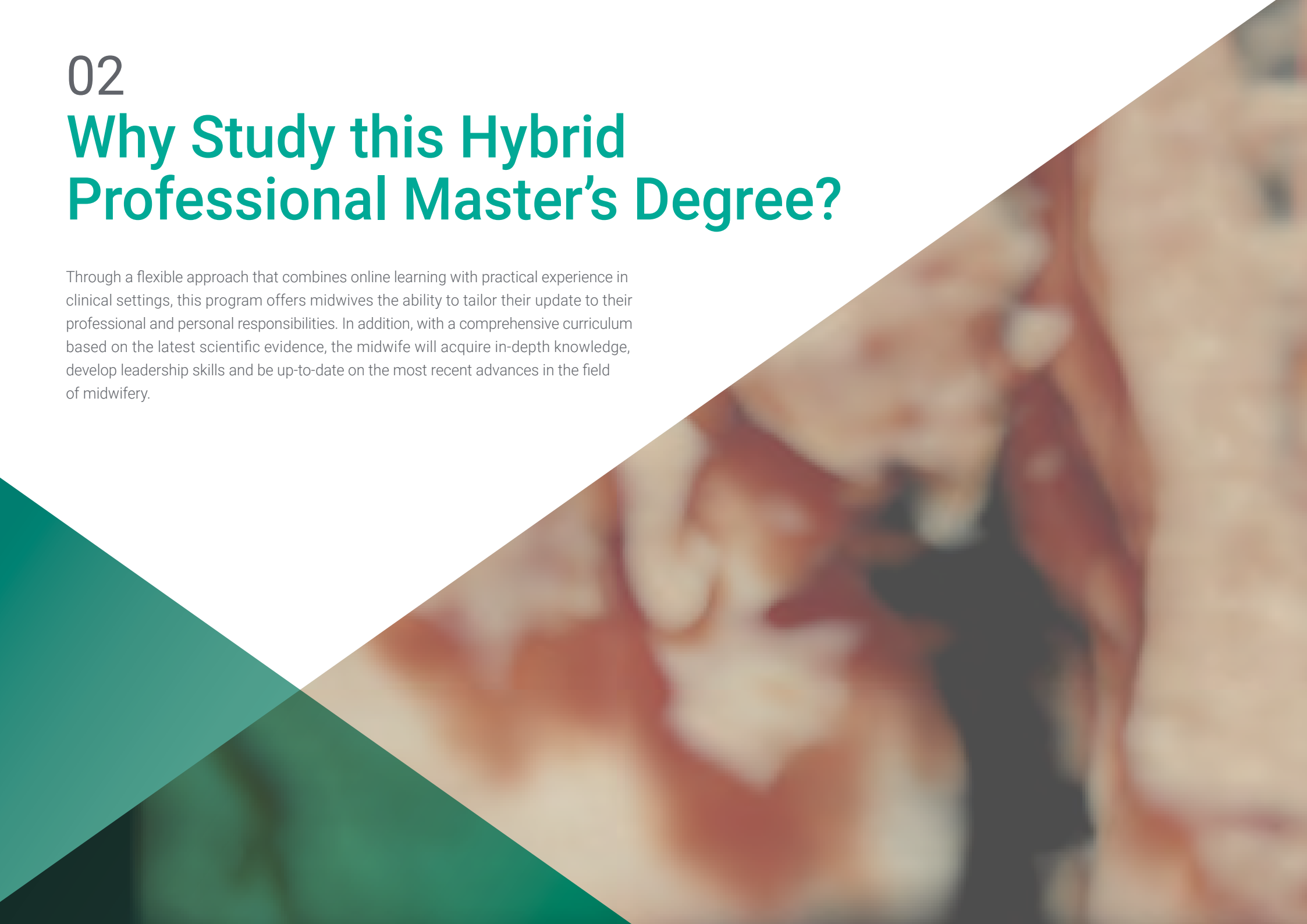
*Update your knowledge through the Hybrid Professional Master's Degree in Obstetrics for Midwives, in a practical way and adapted to your needs.*



02

# Why Study this Hybrid Professional Master's Degree?

Through a flexible approach that combines online learning with practical experience in clinical settings, this program offers midwives the ability to tailor their update to their professional and personal responsibilities. In addition, with a comprehensive curriculum based on the latest scientific evidence, the midwife will acquire in-depth knowledge, develop leadership skills and be up-to-date on the most recent advances in the field of midwifery.





“

*You will delve, together with the best specialists, into the most outstanding clinical practice in the obstetric field"*

### 1. Updating from the Latest Technology Available

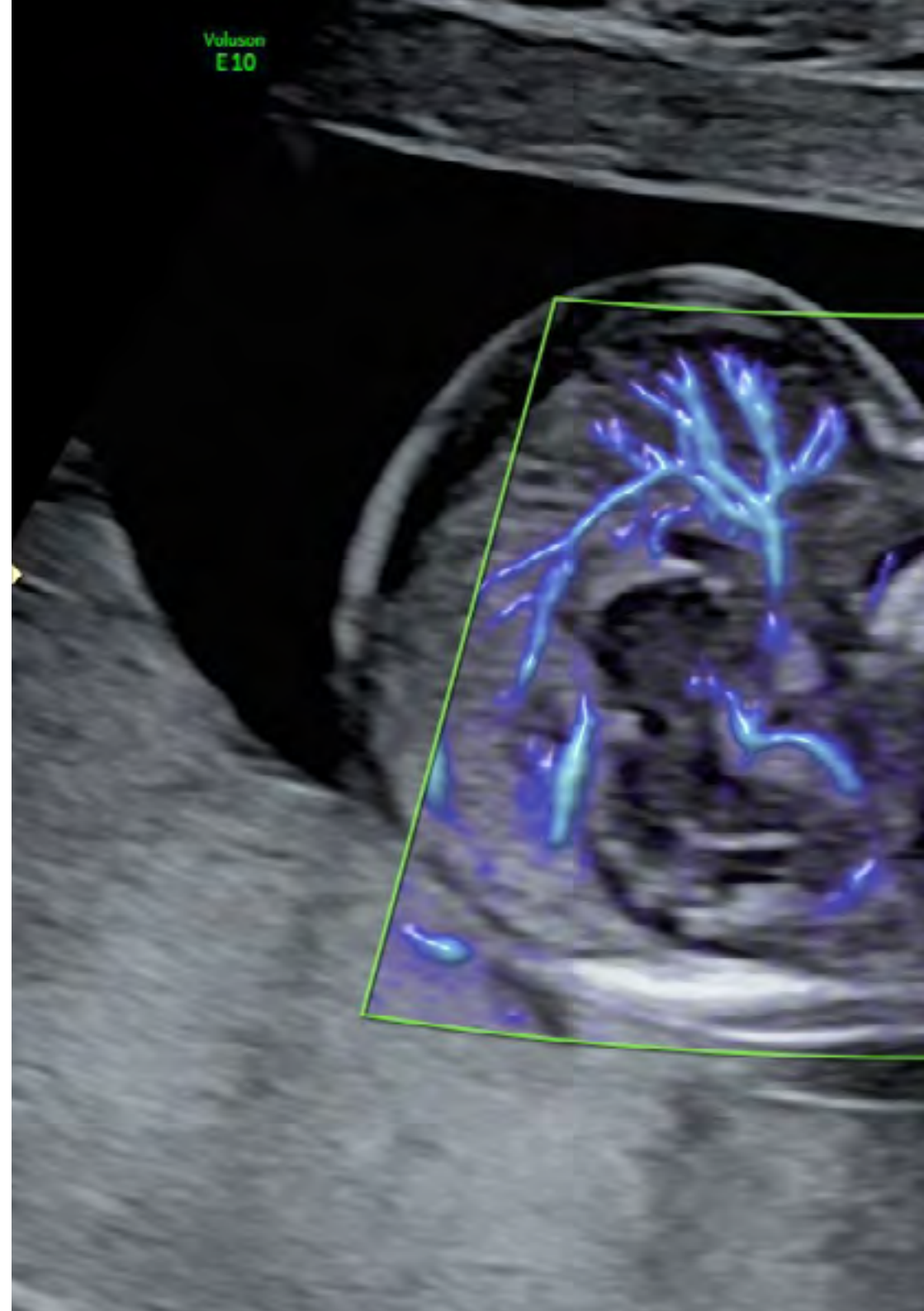
This program provides participants with the opportunity to be updated and familiarized with the latest technology available in the field of obstetrics. Through the integration of advanced technological tools in learning, midwives can acquire practical skills and up-to-date knowledge to meet the challenges in obstetric care.

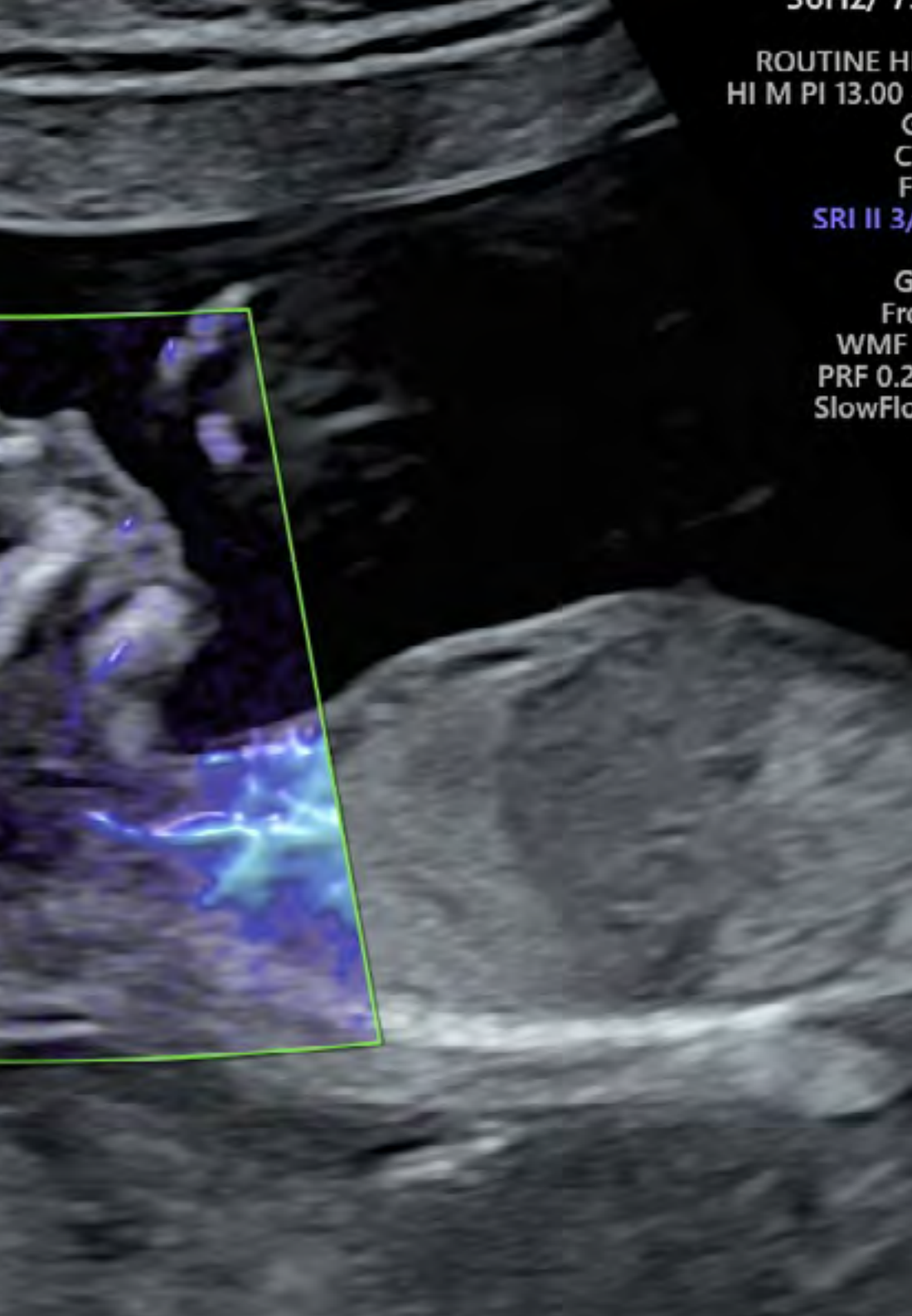
### 2. Gaining In-depth Knowledge from the Experience of Top Specialists

Participants have the invaluable opportunity to delve into obstetrics from the experience and knowledge of the best specialists in the field. With an exceptional faculty of experts with a wealth of obstetric experience, midwives gain a unique perspective that enriches their understanding and practice in obstetric care.

### 3. Entering First-Class Clinical Environments

This program offers midwives the opportunity to enter world-class clinical settings. Through collaborations with prestigious hospitals and health centers, participants have access to real-life obstetric care settings, where they can apply their acquired knowledge and skills in a supervised clinical setting.





#### 4. Combining the Best Theory with State-of-the-Art Practice

In this Hybrid Professional Master's Degree, midwives have the privilege of combining the best theory with the most advanced practice in the field of obstetrics. The program offers a solid theoretical foundation through up-to-date teaching materials and analysis of real cases. In addition, it focuses on the practical application of that knowledge through activities in advanced clinical settings, allowing midwives to integrate and strengthen their theoretical learning with practical experience.

#### 5. Expanding the Boundaries of Knowledge

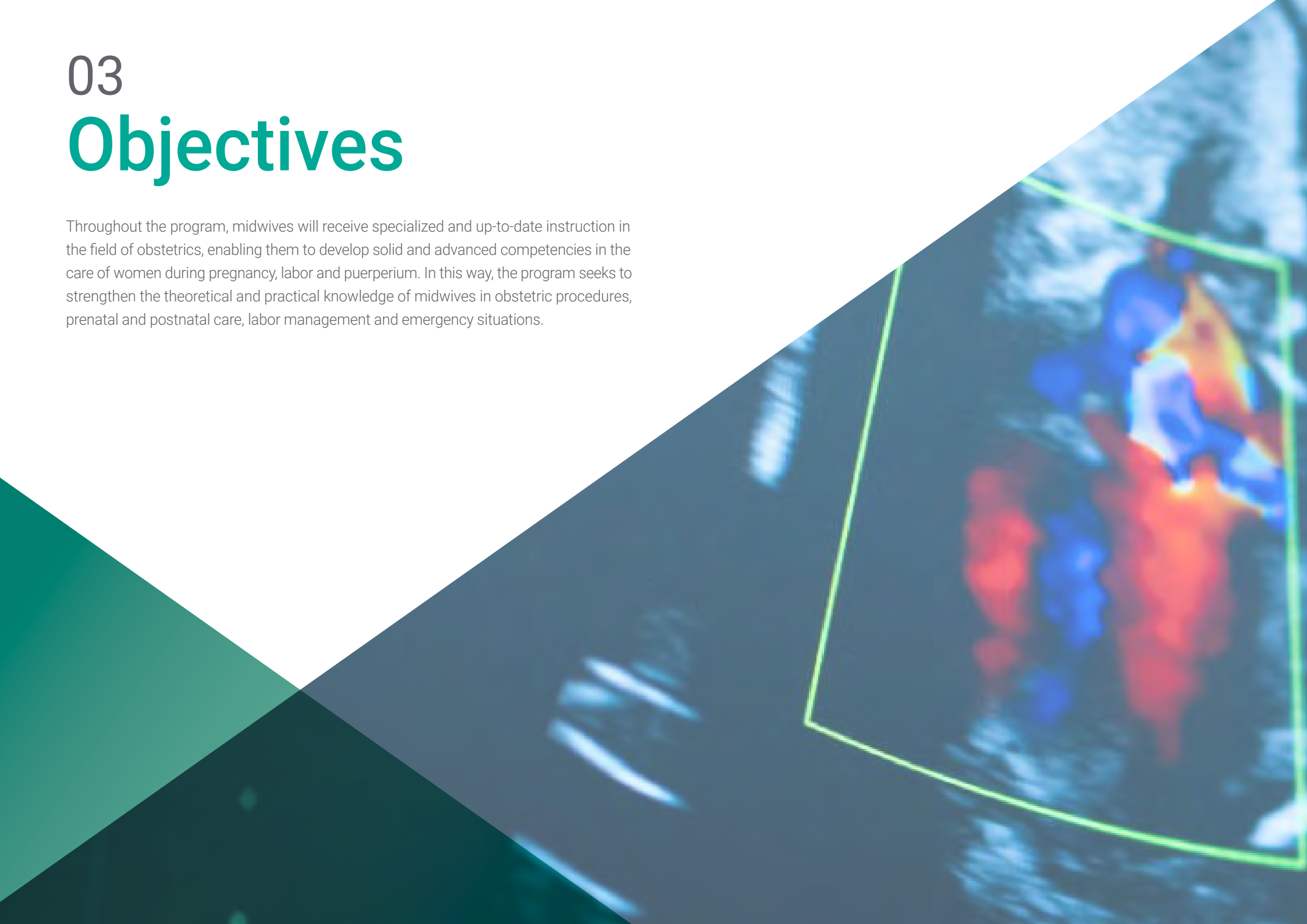
This program offers midwives the opportunity to expand the frontiers of their knowledge in the field of obstetrics. Through a comprehensive and up-to-date syllabus, participants explore the latest research and topics at the forefront of obstetrics. This allows them to acquire a broader view of the discipline, develop critical thinking and foster innovation in their professional practice, therefore contributing to the continuous advancement and development of obstetric care.



*You will have full practical immersion at the center of your choice"*

# 03 Objectives

Throughout the program, midwives will receive specialized and up-to-date instruction in the field of obstetrics, enabling them to develop solid and advanced competencies in the care of women during pregnancy, labor and puerperium. In this way, the program seeks to strengthen the theoretical and practical knowledge of midwives in obstetric procedures, prenatal and postnatal care, labor management and emergency situations.



“

*With this program you will be able to upgrade your knowledge in a real scenario and with the maximum scientific precision"*



## General Objective

---

- The general objective of the Hybrid Professional Master's Degree in Obstetrics for Midwives is to provide professionals with an up-to-date knowledge of the procedures of this specialty in a theoretical and practical way. Through a rigorous hospital internship from the clinical and academic point of view, participants will have the opportunity to be immersed in a hospital center of scientific excellence and technological innovation, accompanied by renowned professionals. In this way, the fundamental interventions of the specialist will be addressed, therefore perfecting and enhancing their skills in medical care in the obstetric area.



*Immediately, you will be able to put into your daily practice all the knowledge, techniques and procedures you acquire during this Hybrid Professional Master's Degree"*



## Specific Objectives

---

### Module 1. Midwifery Care in the Preconception Consultation

- Apply up-to-date scientific-technical and unified care criteria that ensure continuity of care
- Establish coordination strategies between the professionals involved in the process
- Diagnose with clear recommendations prior to labor
- Develop a protocol to be followed to facilitate labor for the new mother

### Module 2. Pregnancy

- Identify the educational needs that the pregnant woman and her family members may require
- Implement prevention strategies and promotion of obstetric health and, therefore, the health of the future child
- Describe the normal and pathological evolution of a breastfeeding patient

### Module 3. Maternity Education Program

- Develop communicative strategies to establish an appropriate therapeutic link with the woman and their family
- Design strategies that favor an environment of trust, security, and intimacy, respecting the privacy, dignity and confidentiality of the women involved
- Make a guide with the main care for newborns
- Develop strategies and action plans in case of neonatal complications

**Module 4. The Midwife in Labor**

- ♦ Explain the importance of facilitating the accessibility and participation of the accompanying person throughout the process
- ♦ Involve the woman in decision-making throughout the process

**Module 5. Assistance and Care of Woman in Childbirth**

- ♦ Provide close, respectful, empathetic, and professional treatment
- ♦ Establish strategies to offer on-demand consultations (queries)
- ♦ Identify the pregnant woman's condition and prioritize her well-being in order to continue the delivery process

**Module 6. Post-Partum Care for Midwives**

- ♦ Show the pregnant woman techniques and procedures in order to promote self-care during pregnancy and the post-partum period
- ♦ Describe the importance of providing a place where the woman can breastfeed her baby in comfort

**Module 7. Breastfeeding**

- ♦ Create protocols and strategies to encourage the promotion of breastfeeding
- ♦ Helping mothers to initiate breastfeeding
- ♦ Promote breastfeeding techniques for mothers who find it difficult or painful to feed their newborns
- ♦ Explain breast pumping tools for the new mother

**Module 8. Nursing Care in a Newborn**

- ♦ Identify protocols for newborn care
- ♦ Know the newborn's condition to know if they need any priority care or medical treatment
- ♦ Perform a rapid diagnosis to identify the health status of the newborn

**Module 9. Obstetric Emergencies**

- ♦ Identify emergencies that may occur during the delivery procedure and implement the appropriate measures to solve them
- ♦ Define the different treatments that the obstetrical patient may require, and any complications associated with them



*Boost your career path with holistic teaching, allowing you to advance both theoretically and practically"*

# 04 Skills

Throughout the program, participants of the Hybrid Professional Master's Degree in Obstetrics for Midwives will acquire a series of fundamental competencies for their professional performance in the field of obstetrics. In addition, the development of leadership skills, teamwork and decision-making based on scientific evidence will be encouraged. These competencies will enable midwives to provide comprehensive, quality care to women at all stages of their obstetric experience.







“

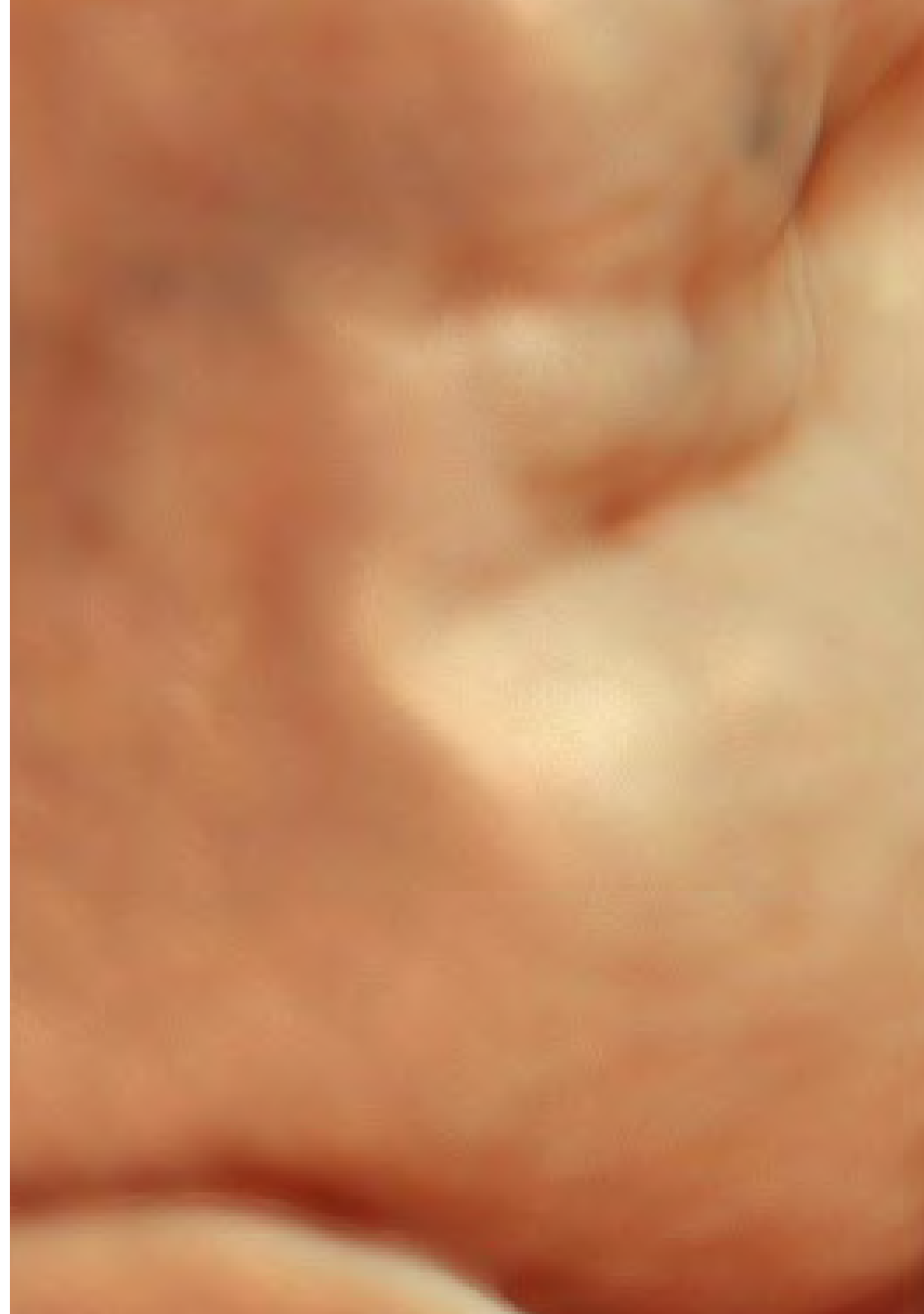
*Be up-to-date with the most advanced  
obstetric competencies, based on the  
most rigorous clinical practice"*



## General Skills

---

- ♦ Possess and understand knowledge that provides a basis or opportunity to be original in the development and/or application of ideas, often in a research context
- ♦ Apply acquired knowledge and problem-solving skills in new or unfamiliar environments within broader (or multidisciplinary) contexts related to the field of study
- ♦ Integrate knowledge and face the complexity of making judgments based on incomplete or limited information, including reflections on the social and ethical responsibilities linked to the application of student knowledge and judgments
- ♦ Communicate your findings to specialized and non-specialized audiences in a clear and unambiguous manner
- ♦ Acquire the learning skills that will enable them to continue studying in a manner that will be largely self-directed or autonomous





## Specific Skills

---

- ♦ Participate in and, where appropriate, lead and streamline mother and child health programs and women's health care
- ♦ Carry out appropriate health education for women, families and the community, identifying learning needs in relation to maternal and child health, carrying out the different educational programs related to the needs identified
- ♦ Promote a positive experience and a responsible attitude towards childbirth in the population and give advice on postpartum and breastfeeding
- ♦ Collaborate in the implementation of activities for the promotion, prevention, assistance, and postpartum recovery of women
- ♦ Detect risk factors and problems in childbirth in women
- ♦ Apply the principles of clinical reasoning, problem detection, decision-making, care and attention planning and appropriate assessment to the different clinical situations in the field of nursing care

05

# Course Management

The program's faculty is composed of an outstanding team of recognized experts in the field of obstetrics. These faculty members have extensive clinical and academic experience and are committed to providing quality, up-to-date teaching. Their solid knowledge and practical skills in the obstetrical field guarantee excellent instruction.





“

*You will have access to the expertise of an outstanding group of experts in the field of obstetric nursing”*

## Management



### Dr. Rodríguez Díaz, Luciano

- Nursing Specialist in Obstetrics and Gynecology
- Head of Studies of the Obstetric-Gynecological Nursing Teaching Unit at the University Hospital of Ceuta
- Midwife at the University Hospital of Ceuta
- Professor at the Centro Universitario de Enfermería Virgen de La Paz. Ronda, Spain
- Professor of the Ceuta Midwifery Teaching Unit
- Member of the Group of Obstetric and Gynecological Emergencies of the Spanish Society of Emergency Nursing (SEEUE)
- Responsible for Perinatal Health: Reproductive Sexual Health and Normal Childbirth of Ingresa Member of the Clinical Commission for Research and Continuing Education of the University Hospital of Ceuta
- Member of Instituto de Estudios Ceutíes, Editorial Board of the European Journal of Health Research, Spanish Society of Emergency Medicine and Emergencies
- PhD from the University of Granada
- Professional Master's Degree in Physical Education and Health from the University of Granada
- Professional Master's Degree in Gynecological Nursing from the CEU Cardenal Herrera University
- Professional Master's Degree in Obstetric Nursing, CEU Cardenal Herrera University
- Specialty in Obstetric and Gynecological Nursing from the University of Malaga
- Postgraduate Certificate in Nursing from the University of Cadiz
- Expert in Health Promotion in the Community by the National University of Distance Education (UNED)



### **Dr. Vázquez Lara, Juana María**

- Primary Care Nurse
- Nurse of the Emergency Service 061 of the Health Management Area of Ceuta
- PhD from the University of Granada
- Midwife at the Delivery Service of the University Hospital of Ceuta, Spain
- Head of Studies of the Ceuta Midwifery Teaching Unit
- Professor in the Ceuta Midwifery Teaching Unit
- National Coordinator of the Obstetrical-Gynecological Emergencies Working Group of the Spanish Society of Emergency Nursing (SEEUE)
- Master's Degree of the Official Doctoral Program in Physical Education and Health
- Postgraduate Diploma in Health Promotion in the Community by the UNED (UNED)
- Specialty in Obstetric and Gynecological Nursing (Midwife) at the Costa del Sol Hospital in Marbella, University School of Nursing and Midwifery of Malaga, University of Malaga
- Postgraduate Certificate in Nursing from the University School of Nursing Salus Infirmorum at the University of Cadiz

## Professors

### Dr. Andrés Núñez, Carmen Patricia

- ♦ Specialist in Obstetrics and Gynecology at the University Hospital of Ceuta
- ♦ Specialist in Gynecology and Obstetrics at the Hospital Quirónsalud Campo de Gibraltar
- ♦ INGESA Specialist Physician
- ♦ Gynecology Clinical Management Unit at the Hospital Universitario San Cecilio. Granada
- ♦ Degree in Medicine and Surgery

### Dr. Carrasco Racero, María Mercedes

- ♦ Nurse Practitioner in Gynecological Care
- ♦ Internship Coordinator at the University Center for Nursing. Ronda, Spain
- ♦ Degree in Nursing
- ♦ Teacher

### Ms. De Dios Pérez, María Isabel

- ♦ Midwife at the Zaragoza University Hospital
- ♦ Postgraduate Certificate in Nursing
- ♦ Nursing Specialist in Obstetrics and Gynecology

### Ms. Díaz Lozano, Paula

- ♦ Midwife at the University Hospital Virgen de Valme
- ♦ Midwife in the Ceuta Health Area
- ♦ Nurse Specialist in Obstetrics and Gynecology at the University Hospital of Ceuta
- ♦ Teacher specialized in Obstetrics
- ♦ Postgraduate Certificate in Nursing from the Faculty of Nursing and Physiotherapy of Cádiz

### Ms. Gilart Cantizano, Patricia

- ♦ Nurse specialized in Obstetrics and Gynecology
- ♦ Specialized Care Midwife in Campo de Gibraltar
- ♦ Midwife in the Hospital Quirónsalud Campo de Gibraltar
- ♦ EIR Midwife in the Andalusian Health Service
- ♦ Critical Care and Emergency Nurse in the Andalusian Health Service
- ♦ Teacher
- ♦ Postgraduate Certificate in Nursing
- ♦ Postgraduate Diploma in Community Nutrition by the UNED (UNED)
- ♦ Postgraduate Diploma in Cardiovascular Risks III by the UNED (UNED)
- ♦ University Expert in Accidents and Emergencies from the Complutense University of Madrid

### Mr. Mérida Téllez, Juan Manuel

- ♦ Nurse specialized in Obstetrics and Gynecology
- ♦ Midwife at Costa del Sol. Hospital Marbella, Spain
- ♦ Teacher
- ♦ Diploma in Nursing



**Mr. Márquez Díaz, Antonio**

- ♦ Midwife in Primary Care in the Junta de Andalucía
- ♦ Midwife at El Angel Hospital HLA Group
- ♦ Midwife in Vithas Hospital
- ♦ EIR Nursing Plan Tutor
- ♦ OPOSALUD Tutor
- ♦ Emergency DUE at El Angel Hospital
- ♦ DUE of the ICU Pediatrics and Neonatal Unit at El Angel Hospital
- ♦ Resident Midwife in the Junta de Andalucía
- ♦ Midwife at Costa del Sol Hospital
- ♦ Midwife at Quirón Campo de Gibraltar Hospital
- ♦ Professional Master's Degree in Health Economics, Health Management and Rational Use of Medicines from the University of Malaga
- ♦ Professional Master's Degree in New Trends in Health Sciences Research by the University of Malaga
- ♦ Professional Master's Degree in Public Health, University of Almeria, Spain
- ♦ Professional Master's Degree in Nurse Prescription and Pharmacotherapeutic Follow-up by the University of Valencia
- ♦ Professional Master's Degree in Pharmacotherapy from the University of Valencia
- ♦ Diploma in Nursing from the University of Malaga

**Dr. Mérida Yáñez, Beatriz**

- ♦ Nurse specialized in Obstetrics and Gynecology
- ♦ Midwife in the Andalusian Health Service
- ♦ Midwife in the Vithas Hospital
- ♦ Midwife in the Murcia Health Service
- ♦ Doctor in Health Sciences
- ♦ Postgraduate Certificate in Nursing
- ♦ Member of the Scientific Committee of the First International Congress of Research and Innovation in Nursing and Physiotherapy of Ceuta and Melilla, Scientific Committee of the Revista Nacional Sanitaria

**D. Muñoz Vela, Francisco Javier**

- ♦ Nurse specialized in Obstetrics and Gynecology
- ♦ Nursing Internship Coordinator at the Maternity and Infant Care Center of Malaga
- ♦ Midwife at the Carlos Haya University Regional Hospital
- ♦ Midwife at San Antonio Park Hospital
- ♦ Midwife in Specialized Care at the Maternity Hospital of Malaga
- ♦ Associate Professor of the Department of Nursing at the University of Malaga
- ♦ Diploma in Nursing from the University of Malaga

**Ms. Palomo Gómez, Rocío**

- ♦ Nurse specialized in Gynecology and Obstetrics
- ♦ Ceuta Specialized Care Midwife
- ♦ Midwife at the Carlos Haya University Regional Hospital. Malaga, Spain
- ♦ Teacher at the Malaga Midwifery Unit
- ♦ Postgraduate Certificate in Nursing

**Ms. Revidiego Pérez, María Dolores**

- ◆ Nurse specialized in Gynecology and Obstetrics
- ◆ Specialized Care Midwife in Campo de Gibraltar
- ◆ Midwife in the Hospital Quirónsalud Campo de Gibraltar
- ◆ Teacher
- ◆ Postgraduate Certificate in Nursing

**Dr. Rivero Gutiérrez, Carmen**

- ◆ Midwife in Primary Care of the Health Area of Ceuta
- ◆ Midwife at Ingesa Ceuta
- ◆ Midwife at the Puerta del Mar University Hospital Complex
- ◆ Professor and Tutor of the Ceuta Midwifery Teaching Unit
- ◆ Postgraduate Certificate in Nursing

**Mr. Rodríguez Díaz, David**

- ◆ Nurse at Nuestra Señora de Candelaria University Hospital
- ◆ Teacher
- ◆ Diploma in Nursing

**Dr. Vázquez Lara, Francisco José**

- ◆ Specialist in Biological Sciences
- ◆ Teacher
- ◆ PhD from the Polytechnic University of Valencia
- ◆ Degree in Biological Sciences





**Ms. Vázquez Lara, María Dolores**

- ◆ Nurse Practitioner in the Primary Care of Pregnant Women
- ◆ Campo de Gibraltar Primary Care Nurse
- ◆ Teacher
- ◆ Diploma in Nursing

**Ms. Llinás Prieto, Lucía**

- ◆ Nurse Practitioner in Gynecological Care
- ◆ Teacher
- ◆ Postgraduate Certificate in Nursing

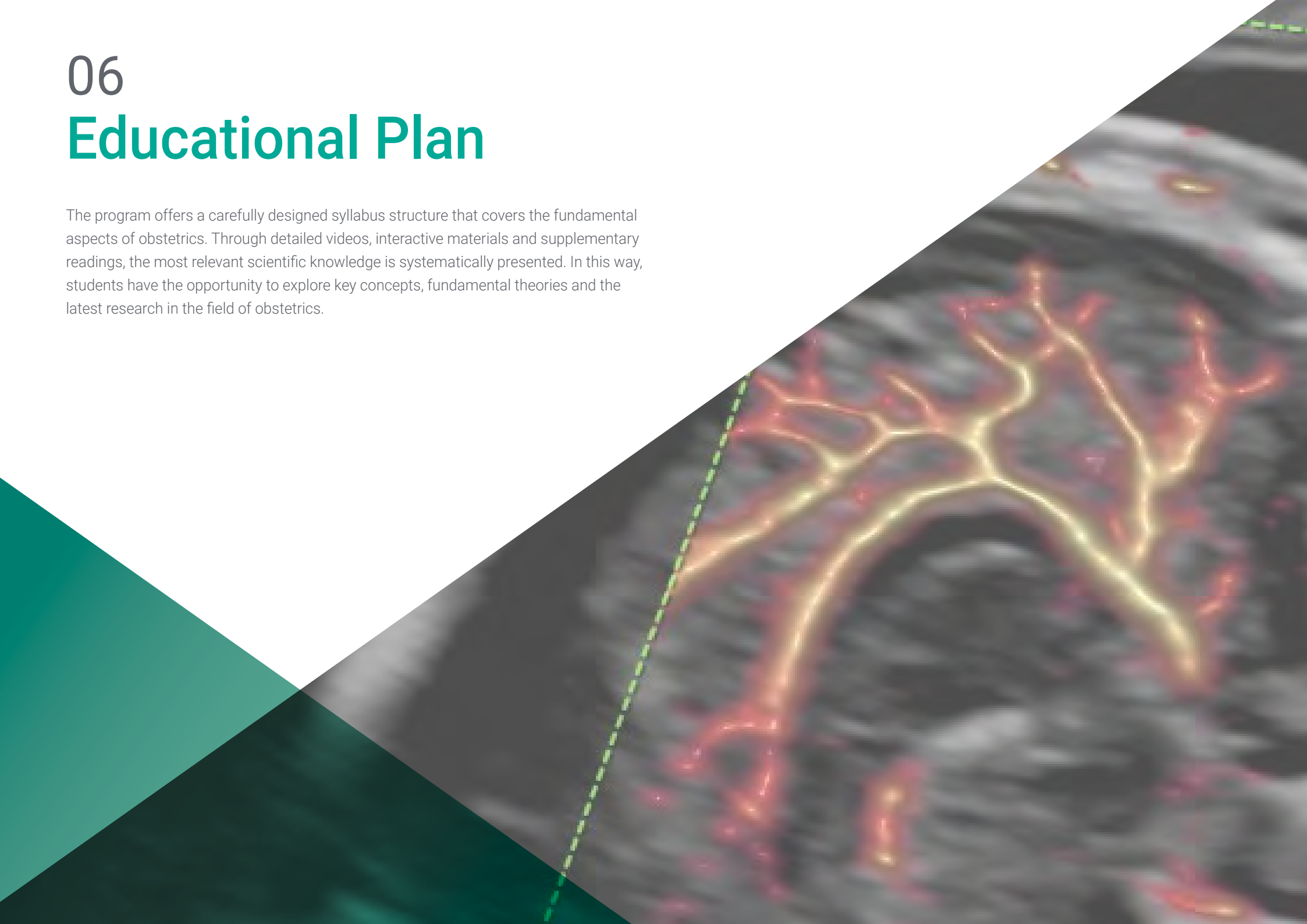
“

*You will combine theory and professional practice through a demanding and rewarding educational approach”*

# 06

## Educational Plan

The program offers a carefully designed syllabus structure that covers the fundamental aspects of obstetrics. Through detailed videos, interactive materials and supplementary readings, the most relevant scientific knowledge is systematically presented. In this way, students have the opportunity to explore key concepts, fundamental theories and the latest research in the field of obstetrics.





“

*Expand your obstetric knowledge and skills through a rigorous and updated academic program, taught by renowned professionals in the field"*

## Module 1. Midwifery Care in the Preconception Consultation

- 1.1. Need for a Preconception Consultation
- 1.2. Content of a Midwife Consultation
  - 1.2.1. Medical History
  - 1.2.2. Physical Examination
  - 1.2.3. Complementary Tests
- 1.3. Education and Promotion of Health on the Part of the Midwife
- 1.4. Pharmacological Supplements and Midwife Recommendations

## Module 2. Pregnancy

- 2.1. Duration of pregnancy. Nomenclature
- 2.2. Anatomic-Physiological Modifications
  - 2.2.1. Cardiovascular and Cardiac Changes
    - 2.2.1.1. Cardiac Changes
    - 2.2.1.2. Hematological Changes
    - 2.2.1.3. Vascular Changes
  - 2.2.2. Respiratory Changes
    - 2.2.2.1. Anatomical Changes
    - 2.2.2.2. Functional Changes
  - 2.2.3. Renal and Urinary Changes
    - 2.2.3.1. Anatomical Modifications
    - 2.2.3.2. Functional Modifications
  - 2.2.4. Metabolic Changes
    - 2.2.4.1. Weight Gain
    - 2.2.4.2. Basal Metabolism
    - 2.2.4.3. Carbohydrate Metabolism
    - 2.2.4.4. Lipid Metabolism
    - 2.2.4.5. Protein Metabolism
    - 2.2.4.6. Acid-base Equilibrium
    - 2.2.4.7. Water Metabolism
    - 2.2.4.8. Minerals and Vitamins



- 2.2.5. Genital and Mammary Changes
  - 2.2.5.1. External Genitalia
  - 2.2.5.2. Internal Genitals
  - 2.2.5.3. Breast Changes
- 2.2.6. Endocrine Changes
  - 2.2.6.1. Constitution of the Fetoplacental Unit
  - 2.2.6.2. Pituitary
  - 2.2.6.3. Thyroid
  - 2.2.6.4. Parathyroid
  - 2.2.6.5. Pancreas
  - 2.2.6.6. Adrenal Gland
- 2.2.7. Skin and Eye Changes
  - 2.2.7.1. Vascular Changes
  - 2.2.7.2. Pigmentation Changes
  - 2.2.7.3. Tegumentary System
  - 2.2.7.4. Eye Changes
- 2.2.8. Gastrointestinal Changes
  - 2.2.8.1. Mouth
  - 2.2.8.2. Esophagus and Stomach
  - 2.2.8.3. Intestine
  - 2.2.8.4. Liver
  - 2.2.8.5. Gallbladder
- 2.2.9. Musculoskeletal Changes
  - 2.2.9.1. Change of the Center of Gravity
  - 2.2.9.2. Pelvis
  - 2.2.9.3. Musculoskeletal Alterations
- 2.3. Diagnosis of Pregnancy for Midwives
  - 2.3.1. Diagnosis of Pregnancy
  - 2.3.2. Biochemical Tests
    - 2.3.2.1. Biological Tests
    - 2.3.2.2. Immunological Tests
  - 2.3.3. Ultrasound
  - 2.3.4. Signs and Symptoms
    - 2.3.4.1. Signs
    - 2.3.4.2. Symptoms
- 2.4. Prenatal Care. Midwife's program of gestational control
  - 2.4.1. Prenatal Care
  - 2.4.2. Pregnancy Control Program
    - 2.4.2.1. First Pregnancy Check-up Visit (< 10 weeks)
    - 2.4.2.2. Successive Prenatal Visits
  - 2.4.3. Perinatal Risk Assessment
  - 2.4.4. Prenatal Control Protocols
    - 2.4.4.1. Definition
    - 2.4.4.2. Objectives
    - 2.4.4.3. Personnel Involved
    - 2.4.4.4. Process
- 2.5. Prenatal Diagnosis
  - 2.5.1. Non-Invasive Techniques
  - 2.5.2. Invasive Techniques
  - 2.5.3. Couple Counselling in Prenatal Diagnosis
    - 2.5.3.1. Definition
    - 2.5.3.2. General Objectives
    - 2.5.3.3. Specific Objectives
    - 2.5.3.4. Targeted Population
    - 2.5.3.5. Description of the Process
- 2.6. Midwife's Health Education for the Pregnant Woman
  - 2.6.1. Health Education for the Pregnant Woman
  - 2.6.2. Healthy Habits
    - 2.6.2.1. Feeding
    - 2.6.2.2. Consumption of Harmful Substances
    - 2.6.2.3. Work
    - 2.6.2.4. Sports
    - 2.6.2.5. Travel
    - 2.6.2.6. Hygiene, Clothing, and Footwear
    - 2.6.2.7. Violence in Pregnancy
  - 2.6.3. Sexuality

- 2.6.4. Common Discomforts During Pregnancy
  - 2.6.4.1. Cardiovascular
  - 2.6.4.2. Dermatological
  - 2.6.4.3. Digestive
  - 2.6.4.4. Locomotor
  - 2.6.4.5. Respiratory
  - 2.6.4.6. Genitourinary
- 2.6.5. Warning Signs
- 2.6.6. Promotion of Breastfeeding
- 2.6.7. Birth Plan
- 2.7. Nutrition of the Pregnant Woman
  - 2.7.1. Evaluation of the Diet
    - 2.7.1.1. Energy Requirements
    - 2.7.1.2. Food Selection
    - 2.7.1.3. Supplements During Pregnancy
    - 2.7.1.4. Weight Gain
  - 2.7.2. Special Situations
    - 2.7.2.1. Medical Treatment
    - 2.7.2.2. Vegetarians
  - 2.7.3. Dietary Counseling During Pregnancy
- 2.8. Pharmaceuticals in Pregnancy
  - 2.8.1. Pharmaceuticals in Pregnancy
  - 2.8.2. Pharmacology in Pregnancy
  - 2.8.3. Mechanisms of Action in the Mother and Fetus
    - 2.8.3.1. Mother
    - 2.8.3.2. Placenta
    - 2.8.3.3. Fetus
  - 2.8.4. Use and Management of Pharmaceuticals in Pregnancy
  - 2.8.5. Indications, Pharmaceutical Interaction, and Dosage
    - 2.8.5.1. Anti-inflammatory, Analgesic, and Antipyretic Medications
    - 2.8.5.2. Gastroesophageal Reflux Prophylactics and Antiulcer Medications
    - 2.8.5.3. Anticoagulants
    - 2.8.5.4. Laxatives
    - 2.8.5.5. E. Vitamins
    - 2.8.5.6. Antianemic Medications
    - 2.8.5.7. Antiarrhythmics
    - 2.8.5.8. Antihypertensives
    - 2.8.5.9. Hormones
    - 2.8.5.10. Oral Contraceptives
    - 2.8.5.11. Oral Antidiabetics
    - 2.8.5.12. Corticoids
    - 2.8.5.13. Dermatological Treatments
    - 2.8.5.14. N. Antiviral Treatments
    - 2.8.5.15. Trichomonocides
    - 2.8.5.16. Antibiotics
    - 2.8.5.17. Antiasthmatics
    - 2.8.5.18. Antitussives
    - 2.8.5.19. Rhinologicals
    - 2.8.5.20. Antihistamines
    - 2.8.5.21. Antiepileptics
    - 2.8.5.22. Antidepressants
    - 2.8.5.23. Antipsychotics
  - 2.8.6. Annex. FDA Classification of the Different Groups of Medications
- 2.9. Psychosocial Aspects of Pregnancy
  - 2.9.1. Psychosocial Aspects of Pregnancy
  - 2.9.2. Cultural and Religious influences
  - 2.9.3. The Meaning and Impact of Pregnancy on the Couple and on the Family and Social Surroundings
  - 2.9.4. Psychological Changes in Pregnancy
    - 2.9.4.1. First Trimester
    - 2.9.4.2. Second Trimester
    - 2.9.4.3. Third Trimester
  - 2.9.5. Bonding



### Module 3. Maternity Education Program for Midwives

- 3.1. History
- 3.2. Objectives
  - 3.2.1. General Objective
  - 3.2.2. Specific Objectives
- 3.3. Theoretical and Practical Content
  - 3.3.1. Course Content
  - 3.3.2. Method
- 3.4. Physical Exercises, Pelvic Floor Exercises, and Body Statics
- 3.5. Breathing Techniques for Midwives
  - 3.5.1. Breathing Classification
  - 3.5.2. Current Trends
- 3.6. Relaxation Techniques Applied by the Midwife
  - 3.6.1. Theoretical Basis of Childbirth Education
  - 3.6.2. Different Schools
- 3.7. Use of the Birthing Ball or Spherodynamics
- 3.8. The Midwife and Aquatic Maternal Education
- 3.9. Pilates Method for Pregnant Women

### Module 4. The Midwife in Labor and Delivery

- 4.1. Physiology of uterine contraction. Uterine Activity
  - 4.1.1. Basic Physiological Aspects of Uterine Contraction
  - 4.1.2. Basic Biochemistry of Uterine Contraction
  - 4.1.3. Uterine Activity. Brief Historical Review
  - 4.1.4. Components of Uterine Activity
  - 4.1.5. Abdominal Muscles
  - 4.1.6. Causes of Onset of Labor
- 4.2. Factors Involved in Labor
  - 4.2.1. The Fetus. Fetal Head
  - 4.2.2. Fetal Statics
  - 4.2.3. Leopold's Maneuvers
  - 4.2.4. Obstetric Nomenclature Determined by Fetal Statics
  - 4.2.5. Diagnosis by Vaginal Examination
  - 4.2.6. Birth Canal
  - 4.2.7. Pelvic Axis
  - 4.2.8. Hodge Planes
  - 4.2.9. Soft Birth Canal
  - 4.2.10. Motor of Labor
- 4.3. Midwife's Assessment of Fetal Well-Being
  - 4.3.1. Evaluation of Fetal Activity
  - 4.3.2. Non-stress Test (NST)
  - 4.3.3. Stress Test or Contraction Tolerance Test
  - 4.3.4. Biophysical Profile
  - 4.3.5. Amnioscopy
  - 4.3.6. Ultrasound. Doppler Study
  - 4.3.7. Bioelectronic Monitoring in Labor
  - 4.3.8. Fetal Heart Rate Monitoring
  - 4.3.9. Fetal Heart Rate Parameters
  - 4.3.10. Biochemical Monitoring
- 4.4. Onset of Labor and Periods of Labor
  - 4.4.1. Onset of Labor. Prodromes of Labor
  - 4.4.2. Dilatation Period
  - 4.4.3. Birthing Period
  - 4.4.4. Delivery Period
- 4.5. Delivery Mechanism in Vertex Presentation
  - 4.5.1. Accommodation and Wedging in the Upper Strait
  - 4.5.2. Descent and Intrapelvic Rotation
  - 4.5.3. Flexion
  - 4.5.4. Detachment
  - 4.5.5. E. External Rotation and Delivery of the Shoulders
- 4.6. Pharmacology in Birth for Midwives
  - 4.6.1. Pharmacokinetic Principles
  - 4.6.2. Mechanisms of Action between Mother and Fetus
  - 4.6.3. Use and Management of Pharmaceuticals in Childbirth

## Module 5. Midwife's Assistance and Care of the Woman in Childbirth

- 5.1. Assessment and Care of the Woman on the Part of the Midwife
  - 5.1.1. Diagnosis of Labor
  - 5.1.2. The Partogram
  - 5.1.3. Assistance and Care of the Woman During Dilatation
  - 5.1.4. Assessment of the Evolution of Labor
  - 5.1.5. Assistance and Care of the Woman During Expulsion
  - 5.1.6. Episiotomy and Episiorrhaphy
  - 5.1.7. Assistance and Care of the Woman during Childbirth
  - 5.1.8. Collection and Donation of Umbilical Cord Blood
  - 5.1.9. Protocol for Delivery Assistance
- 5.2. Pain Relief in Labor. Physiology of Pain in Childbirth. Pain Perception
  - 5.2.1. Physiology of Pain in Childbirth
  - 5.2.2. Characteristics of Pain During Labor
  - 5.2.3. Gate Theory
  - 5.2.4. Perception of Pain in Childbirth
  - 5.2.5. Non-pharmacological Techniques for Pain Relief in Labor
- 5.3. Midwifery Care in Normal Childbirth Birth Plan
  - 5.3.1. Birth Plan
  - 5.3.2. Biomechanics of Childbirth
  - 5.3.3. Positions that Favor the Evolution of Labor
  - 5.3.4. Protocol for Normal Delivery Care
- 5.4. Analgesia and Obstetric Anesthesia for Midwives
  - 5.4.1. Nitrous Oxide
  - 5.4.2. Morphine
  - 5.4.3. Local anesthetics
  - 5.4.4. Pudendal Anesthesia
  - 5.4.5. Peridural Analgesia
  - 5.4.6. General Anesthesia
  - 5.4.7. Comparative Analysis of Anesthesia Techniques in Cesarean Section
- 5.5. Assistance of the Woman in Directed Childbirth
  - 5.5.1. Indications for Induction
  - 5.5.2. Elective Induction
  - 5.5.3. Contraindications for Induction
  - 5.5.4. Risks for Induction
  - 5.5.5. Recommendations on Induction Information. Decision Making
  - 5.5.6. Induction Methods
  - 5.5.7. Labor Stimulation
  - 5.5.8. Assistance and Care of the Woman
  - 5.5.9. Information
  - 5.5.10. Techniques and Movement Restriction
  - 5.5.11. Monitoring of Analgesia
  - 5.5.12. Hydration and Ingestion
  - 5.5.13. Expulsion Positions
- 5.6. Psychological Aspects of the Mother During Childbirth
  - 5.6.1. Family Relationship. Family and Professional Support During Childbirth
  - 5.6.2. Psychological Factors During Labor
  - 5.6.3. Psychological Factors During Expulsion
  - 5.6.4. Mother-Child Interactions
  - 5.6.5. Data on Early Skin-to-skin Contact
- 5.7. Different Alternatives in Obstetric Care
  - 5.7.1. Hospital Birth
  - 5.7.2. Birthing Centers
  - 5.7.3. Home Birth
  - 5.7.4. Maternal and Perinatal Risk Assessment

## Module 6. Post-Partum Care for Midwives

- 6.1. Assistance of the Midwife and Care of the Woman During Post-Partum Period
  - 6.1.1. Puerperium, Adaptations and Modifications
  - 6.1.2. Postpartum Care and Assistance
  - 6.1.3. General Examination
  - 6.1.4. Identification of Problems and Their Prevention
  - 6.1.5. Discharge Counselling
- 6.2. Psychosocial Aspects in the Puerperium
  - 6.2.1. Psychosocial Adaptation of the Puerpera
  - 6.2.2. Psychological Changes
  - 6.2.3. Assessment of the Emotional State: Detection of Postpartum Depression
  - 6.2.4. Mother/Partner/Newborn Relationship Bonds
  - 6.2.5. Family Adaptation
- 6.3. Pharmaceuticals in Puerperium
  - 6.3.1. Pharmaceuticals in Puerperium
  - 6.3.2. Use and Management of Pharmaceuticals in Postpartum. Indications, Pharmaceutical Interaction, and Dosage
- 6.4. Home Care by the Midwife During the Puerperium
  - 6.4.1. Characteristics of Home Care of the Mother and the Newborn During the Postpartum Period
  - 6.4.2. Home Care of the Mother and the Newborn during the Postpartum Period
- 6.5. Midwife Care in Postpartum Period
  - 6.5.1. Postpartum Program
  - 6.5.2. Counseling and Health Education for the Mother-Child Pair
  - 6.5.3. Maternal Recovery. Postpartum Groups
  - 6.5.4. Physical Exercises During Postpartum
  - 6.5.5. Pelvic floor recovery

## Module 7. Breastfeeding Training

- 7.1. Physiology
  - 7.1.1. Milk Secretion
  - 7.1.2. Physiology of Lactal Secretion
  - 7.1.3. Inhibition of Milk Secretion
- 7.2. Breastfeeding for Midwives
  - 7.2.1. Definition of Breastfeeding
  - 7.2.2. Breastfeeding Practices
  - 7.2.3. Breastfeeding Positions
  - 7.2.4. Manual Expression of Breast Milk
  - 7.2.5. Baby-friendly Hospital Initiative
  - 7.2.6. Advantages of Breastfeeding
  - 7.2.7. Breastfeeding Problems. Special Situations. Breastfeeding in Neonates with Health Problems
  - 7.2.8. Breastfeeding Support Groups (GALM)
- 7.3. Pharmaceuticals in Lactation
  - 7.3.1. Mechanisms of Action in the Mother and Fetus
  - 7.3.2. Use and Management of Pharmaceuticals in Lactation. Indications, Pharmaceutical Interaction, and Dosage

## Module 8. Caring for a Newborn for Midwives

- 8.1. Adaptation to Extrauterine Life
- 8.2. Assessment of the Neonate's Health Status
- 8.3. Immediate Care of the Newborn
- 8.4. Anatomical and Physiological Characteristics of the Newborn
- 8.5. General Care of the Newborn
- 8.6. Newborn Feeding
- 8.7. Discharge Counseling

## Module 9. Obstetric Emergencies

- 9.1. Gynecological bleeding
- 9.2. Threat of Preterm Birth
- 9.3. Hypertensive Status of Pregnancy
- 9.4. Obstetric bleeding

07

# Clinical Internship

After passing the online theoretical period, the program includes an internship program in a reference clinical center. The student will have at their disposal the support of a tutor who will accompany them during the whole process, both in the preparation and in the development of the clinical practice.



“

*Immerse yourself in a unique blended learning experience that combines the flexibility of online study with clinical practice in excellent settings”*

During the clinical internship period of the Hybrid Professional Master's Degree in Obstetrics for Midwives, participants have the opportunity to apply and consolidate the theoretical knowledge acquired in a real clinical setting. Together with experienced professionals, midwives are immersed in a variety of obstetric situations and scenarios, gaining valuable practical experience and strengthening their clinical skills. Through active participation in prenatal care, labor monitoring and postnatal care, midwives develop an in-depth understanding of obstetric procedures, management of emergency situations and comprehensive care of women during their obstetric experience.

The clinical internship is carried out in collaboration with prestigious health centers and hospitals, recognized for their excellence in maternal and child care. These institutions provide a clinical environment conducive to learning and applying practical skills. During the internship, midwives work closely with clinical staff, allowing them to receive direct guidance and feedback from professionals with extensive experience in the field.

The practical education will be carried out with the active participation of the student performing the activities and procedures of each area of competence (learning to learn and learning to do), with the accompaniment and guidance of teachers and other fellow trainees who facilitate teamwork and multidisciplinary integration as transversal competencies for the practice of home nursing (learning to be and learning to relate).

The procedures described below will form the basis of the practical part of the internship, and their implementation is subject to both the suitability of the patients and the availability of the center and its workload, with the proposed activities being as follows:





Module	Practical Activity
Preconception care	Conduct health and background assessments at the preconception visit
	Develop health education and promotion plans for couples wishing to conceive
	Apply pharmacological supplementation strategies according to the needs of each patient
Prenatal Care.	Diagnosis of pregnancy and monitoring of fetal development
	Participate in ultrasound education for prenatal evaluation
	Implement pregnancy monitoring programs and perform prenatal diagnostics
	Provide health education to pregnant women on care during pregnancy, including nutrition and management of common discomforts
	Advise on the safe use of medications during pregnancy
Preparation for Maternity	Advise pregnant women on physical exercises, pelvic floor exercises and body statics techniques
	Teaching breathing and relaxation techniques for pain management during labor and delivery
	Use the birth ball or spherodynamics as a tool in preparation for delivery
	Perform aquatic maternal education and apply the Pilates method adapted to pregnant women
Labor	Conduct assessments of fetal wellbeing during labor
	Follow the onset of labor and different periods of labor
	Acquire knowledge of the pharmacology used in labor and delivery
Assistance and care during labor and puerperium	Assess and care for the woman during labor and delivery
	Practice pain relief techniques for labor and delivery and understand physiology and perception of pain
	Provide care for normal labor and respect women's birth plans
	Master the administration of obstetric analgesia and anesthesia
	Apply different alternatives in obstetric assistance, such as the use of positions and non-pharmacological techniques

## Civil Liability Insurance

This institution's main concern is to guarantee the safety of the trainees and other collaborating agents involved in the internship process at the company. Among the measures dedicated to achieve this is the response to any incident that may occur during the entire teaching-learning process.

To this end, this entity commits to purchasing a civil liability insurance policy to cover any eventuality that may arise during the course of the internship at the center.

This liability policy for interns will have broad coverage and will be taken out prior to the start of the practical training period. That way professionals will not have to worry in case of having to face an unexpected situation and will be covered until the end of the internship program at the center.





## General Conditions of the Internship Program

The general terms and conditions of the internship agreement for the program are as follows:

**1. TUTOR:** During the Hybrid Professional Master's Degree, students will be assigned with two tutors who will accompany them throughout the process, answering any doubts and questions that may arise. On the one hand, there will be a professional tutor belonging to the internship center who will have the purpose of guiding and supporting the student at all times. On the other hand, they will also be assigned with an academic tutor whose mission will be to coordinate and help the students during the whole process, solving doubts and facilitating everything they may need. In this way, the student will be accompanied and will be able to discuss any doubts that may arise, both clinical and academic.

**2. DURATION:** The internship program will have a duration of three continuous weeks, in 8-hour days, 5 days a week. The days of attendance and the schedule will be the responsibility of the center and the professional will be informed well in advance so that they can make the appropriate arrangements.

**3. ABSENCE:** If the students does not show up on the start date of the Hybrid Professional Master's Degree, they will lose the right to it, without the possibility of reimbursement or change of dates. Absence for more than two days from the internship, without justification or a medical reason, will result in the professional's withdrawal from the internship, therefore, automatic termination of the internship. Any problems that may arise during the course of the internship must be urgently reported to the academic tutor.

**4. CERTIFICATION:** Professionals who pass the Hybrid Professional Master's Degree will receive a certificate accrediting their stay at the center.

**5. EMPLOYMENT RELATIONSHIP:** the Hybrid Professional Master's Degree shall not constitute an employment relationship of any kind.

**6. PRIOR EDUCATION:** Some centers may require a certificate of prior education for the Hybrid Professional Master's Degree. In these cases, it will be necessary to submit it to the TECH internship department so that the assignment of the chosen center can be confirmed.

**7. DOES NOT INCLUDE:** The Hybrid Professional Master's Degree will not include any element not described in the present conditions. Therefore, it does not include accommodation, transportation to the city where the internship takes place, visas or any other items not listed

However, students may consult with their academic tutor for any questions or recommendations in this regard. The academic tutor will provide the student with all the necessary information to facilitate the procedures in any case.

# 08

## Where Can I Do the Clinical Internship?

The Hybrid Professional Master's Degree in Obstetrics for Midwives offers participants the opportunity to carry out their clinical internships in renowned health centers and first-class hospitals. These centers are distinguished for their excellence in maternal and child care, as well as for their commitment to professional updating and development. During the internship, midwives will have access to the latest clinical environments, equipped with the latest technology and specialized resources.





“

*Join the daily and demanding work of a team of obstetricians who will detail the most advanced real clinical practice"*



The student will be able to complete the practical part of this Hybrid Professional Master's Degree at the following



Nurses

### Hospital Maternidad HM Belén

Country	City
Spain	La Coruña

Address: R. Filantropía, 3, 15011, A Coruña

Network of private clinics, hospitals and specialized centers distributed throughout Spain.

**Related internship programs:**

- Update in Assisted Reproduction
- Hospitals and Health Services Management



Nurses

### Hospital HM Rosaleda

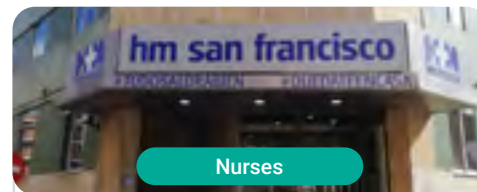
Country	City
Spain	La Coruña

Address: Rúa de Santiago León de Caracas, 1, 15701, Santiago de Compostela, A Coruña

Network of private clinics, hospitals and specialized centers distributed throughout Spain.

**Related internship programs:**

- Hair Transplantation
- Orthodontics and Dentofacial Orthopedics



Nurses

### Hospital HM San Francisco

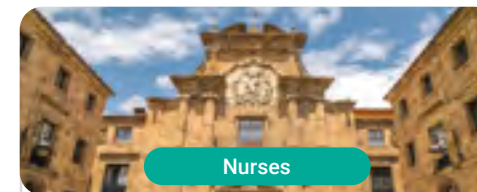
Country	City
Spain	León

Address: C. Marqueses de San Isidro, 11, 24004, León

Network of private clinics, hospitals and specialized centers distributed throughout Spain.

**Related internship programs:**

- Update in Anesthesiology and Resuscitation
- Nursing in the Traumatology Department



Nurses

### Hospital HM Regla

Country	City
Spain	León

Address: Calle Cardenal Landázuri, 2, 24003, León

Network of private clinics, hospitals and specialized centers distributed throughout Spain.

**Related internship programs:**

- Update on Psychiatric Treatment in Minor Patients



Nurses

### Hospital HM Nou Delfos

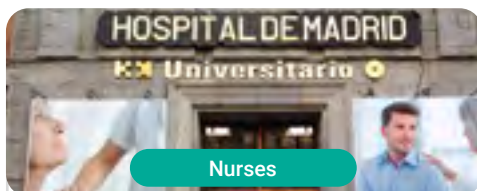
Country	City
Spain	Barcelona

Address: Avinguda de Vallcarca, 151, 08023 Barcelona

Network of private clinics, hospitals and specialized centers distributed throughout Spain.

**Related internship programs:**

- Aesthetic Medicine
- Clinical Nutrition in Medicine



Nurses

### Hospital HM Madrid

Country	City
Spain	Madrid

Address: Pl. del Conde del Valle de Súchil, 16, 28015, Madrid

Network of private clinics, hospitals and specialized centers distributed throughout Spain.

**Related internship programs:**

- Palliative Care
- Anaesthesiology and Resuscitation



Nurses

### Hospital HM Montepíncipe

Country	City
Spain	Madrid

Address: Av. de Montepíncipe, 25, 28660, Boadilla del Monte, Madrid

Network of private clinics, hospitals and specialized centers distributed throughout Spain.

**Related internship programs:**

- Palliative Care
- Aesthetic Medicine



Nurses

### Hospital HM Torrelodones

Country	City
Spain	Madrid

Address: Av. Castillo Olivares, s/n, 28250, Torrelodones, Madrid

Network of private clinics, hospitals and specialized centers distributed throughout Spain.

**Related internship programs:**

- Anaesthesiology and Resuscitation
- Palliative Care



### Hospital HM Sanchinarro

Country	City
Spain	Madrid

Address: Calle de Oña, 10, 28050, Madrid

Network of private clinics, hospitals and specialized centers distributed throughout Spain.

**Related internship programs:**

- Anaesthesiology and Resuscitation
- Palliative Care



### Hospital HM Nuevo Belén

Country	City
Spain	Madrid

Address: Calle José Silva, 7, 28043, Madrid

Network of private clinics, hospitals and specialized centers distributed throughout Spain.

**Related internship programs:**

- General and Digestive System Surgery
- Clinical Nutrition in Medicine



### Hospital HM Puerta del Sur

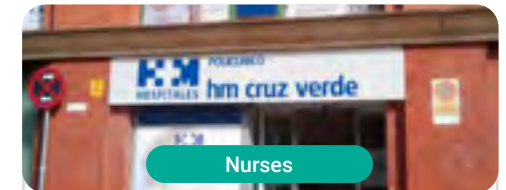
Country	City
Spain	Madrid

Address: Av. Carlos V, 70, 28938, Móstoles, Madrid

Network of private clinics, hospitals and specialized centers distributed throughout Spain.

**Related internship programs:**

- Palliative Care
- Clinical Ophthalmology



### Policlínico HM Cruz Verde

Country	City
Spain	Madrid

Address: Plaza de la Cruz Verde, 1-3, 28807, Alcalá de Henares, Madrid

Network of private clinics, hospitals and specialized centers distributed throughout Spain.

**Related internship programs:**

- Advanced Clinical Podiatry
- Optical Technologies and Clinical Optometry



Nurses

### Policlínico HM Distrito Telefónica

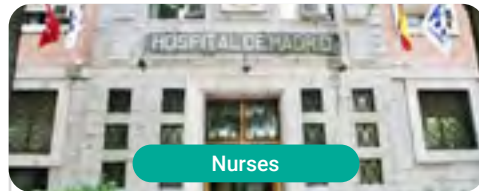
Country	City
Spain	Madrid

Address: Ronda de la Comunicación, 28050, Madrid

Network of private clinics, hospitals and specialized centers distributed throughout Spain.

**Related internship programs:**

- Optical Technologies and Clinical Optometry
- General and Digestive System Surgery



Nurses

### Policlínico HM Gabinete Velázquez

Country	City
Spain	Madrid

Address: C. de Jorge Juan, 19, 1º 28001, Madrid

Network of private clinics, hospitals and specialized centers distributed throughout Spain.

**Related internship programs:**

- Clinical Nutrition in Medicine
- Aesthetic Plastic Surgery



Nurses

### Policlínico HM La Paloma

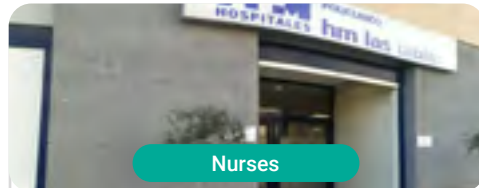
Country	City
Spain	Madrid

Address: Calle Hilados, 9, 28850, Torrejón de Ardoz, Madrid

Network of private clinics, hospitals and specialized centers distributed throughout Spain.

**Related internship programs:**

- Advanced Operating Room Nursing
- Orthodontics and Dentofacial Orthopedics



Nurses

### Policlínico HM Las Tablas

Country	City
Spain	Madrid

Address: C. de la Sierra de Atapuerca, 5, 28050, Madrid

Network of private clinics, hospitals and specialized centers distributed throughout Spain.

**Related internship programs:**

- Nursing in the Traumatology Department
- Diagnosis in Physiotherapy





Nurses

### Policlínico HM Moraleja

Country	City
Spain	Madrid

Address: P.º de Alcobendas, 10, 28109, Alcobendas, Madrid

Network of private clinics, hospitals and specialized centers distributed throughout Spain.

#### Related internship programs:

- Rehabilitation Medicine in Acquired Brain Injury Address



Nurses

### Policlínico HM Sanchinarro

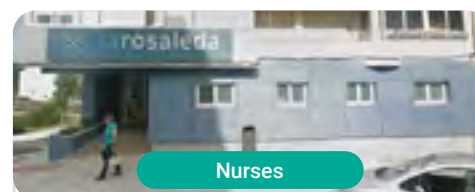
Country	City
Spain	Madrid

Address: Av. de Manoteras, 10, 28050, Madrid

Network of private clinics, hospitals and specialized centers distributed throughout Spain.

#### Related internship programs:

- Obstetrics for Midwives



Nurses

### Policlínico HM Rosaleda Lalín

Country	City
Spain	Pontevedra

Address: Av. Buenos Aires, 102, 36500, Lalín, Pontevedra

Network of private clinics, hospitals and specialized centers distributed throughout Spain.

#### Related internship programs:

- Advances in Hematology and Hemotherapy
- Neurological Physiotherapy



Nurses

### Policlínico HM Imi Toledo

Country	City
Spain	Toledo

Address: Av. de Irlanda, 21, 45005, Toledo

Network of private clinics, hospitals and specialized centers distributed throughout Spain.

#### Related internship programs:

- Electrotherapy in Rehabilitation Medicine
- Hair Transplantation

09

# Methodology

This academic program offers students a different way of learning. Our methodology uses a cyclical learning approach: **Relearning**.

This teaching system is used, for example, in the most prestigious medical schools in the world, and major publications such as the **New England Journal of Medicine** have considered it to be one of the most effective.





“

*Discover Relearning, a system that abandons conventional linear learning, to take you through cyclical teaching systems: a way of learning that has proven to be extremely effective, especially in subjects that require memorization"*

## At TECH Nursing School we use the Case Method

In a given situation, what should a professional do? Throughout the program, students will face multiple simulated clinical cases, based on real patients, in which they will have to do research, establish hypotheses, and ultimately resolve the situation. There is an abundance of scientific evidence on the effectiveness of the method. Nurses learn better, faster, and more sustainably over time.

*With TECH, nurses can experience a learning methodology that is shaking the foundations of traditional universities around the world.*



According to Dr. Gérvas, the clinical case is the annotated presentation of a patient, or group of patients, which becomes a "case", an example or model that illustrates some peculiar clinical component, either because of its teaching power or because of its uniqueness or rarity. It is essential that the case is based on current professional life, in an attempt to recreate the real conditions in professional nursing practice.

“

*Did you know that this method was developed in 1912, at Harvard, for law students? The case method consisted of presenting students with real-life, complex situations for them to make decisions and justify their decisions on how to solve them. In 1924, Harvard adopted it as a standard teaching method”*

The effectiveness of the method is justified by four fundamental achievements:

1. Nurses who follow this method not only grasp concepts, but also develop their mental capacity, by evaluating real situations and applying their knowledge.
2. The learning process has a clear focus on practical skills that allow the nursing professional to better integrate knowledge acquisition into the hospital setting or primary care.
3. Ideas and concepts are understood more efficiently, given that the example situations are based on real-life.
4. Students like to feel that the effort they put into their studies is worthwhile. This then translates into a greater interest in learning and more time dedicated to working on the course.



## Relearning Methodology

At TECH we enhance the case method with the best 100% online teaching methodology available: Relearning.

This university is the first in the world to combine case studies with a 100% online learning system based on repetition combining a minimum of 8 different elements in each lesson, which is a real revolution compared to the simple study and analysis of cases.



*The nurse will learn through real cases and by solving complex situations in simulated learning environments. These simulations are developed using state-of-the-art software to facilitate immersive learning.*

At the forefront of world teaching, the Relearning method has managed to improve the overall satisfaction levels of professionals who complete their studies, with respect to the quality indicators of the best online university (Columbia University).

With this methodology we have trained more than 175,000 nurses with unprecedented success in all specialities regardless of practical workload. Our pedagogical methodology is developed in a highly competitive environment, with a university student body with a strong socioeconomic profile and an average age of 43.5 years old.

*Relearning will allow you to learn with less effort and better performance, involving you more in your specialization, developing a critical mindset, defending arguments, and contrasting opinions: a direct equation to success.*

In our program, learning is not a linear process, but rather a spiral (learn, unlearn, forget, and re-learn). Therefore, we combine each of these elements concentrically.

The overall score obtained by TECH's learning system is 8.01, according to the highest international standards.



This program offers the best educational material, prepared with professionals in mind:



### Study Material

All teaching material is produced by the specialists who teach the course, specifically for the course, so that the teaching content is really specific and precise.

These contents are then applied to the audiovisual format, to create the TECH online working method. All this, with the latest techniques that offer high quality pieces in each and every one of the materials that are made available to the student.



### Nursing Techniques and Procedures on Video

We introduce you to the latest techniques, to the latest educational advances, to the forefront of current medical techniques. All of this in direct contact with students and explained in detail so as to aid their assimilation and understanding. And best of all, you can watch them as many times as you want.



### Interactive Summaries

The TECH team presents the contents attractively and dynamically in multimedia lessons that include audio, videos, images, diagrams, and concept maps in order to reinforce knowledge.

This exclusive educational system for presenting multimedia content was awarded by Microsoft as a "European Success Story".



### Additional Reading

Recent articles, consensus documents and international guidelines, among others. In TECH's virtual library, students will have access to everything they need to complete their course.





#### Expert-Led Case Studies and Case Analysis

Effective learning ought to be contextual. Therefore, TECH presents real cases in which the expert will guide students, focusing on and solving the different situations: a clear and direct way to achieve the highest degree of understanding.



#### Testing & Retesting

We periodically evaluate and re-evaluate students' knowledge throughout the program, through assessment and self-assessment activities and exercises, so that they can see how they are achieving their goals.



#### Classes

There is scientific evidence suggesting that observing third-party experts can be useful.

Learning from an Expert strengthens knowledge and memory, and generates confidence in future difficult decisions.



#### Quick Action Guides

TECH offers the most relevant contents of the course in the form of worksheets or quick action guides. A synthetic, practical, and effective way to help students progress in their learning.



# 10 Certificate

The Hybrid Professional Master's Degree in Obstetrics for Midwives guarantees students, guarantees students, in addition to the most rigorous and up-to-date education, access to a Hybrid Professional Master's Degree diploma issued by TECH Technological University.





“

*Successfully complete this program and receive your university qualification without having to travel or fill out laborious paperwork”*

This **Hybrid Professional Master's Degree in Obstetrics for Midwives** contains the most complete and up-to-date program on the professional and educational field.

After the student has passed the assessments, they will receive their corresponding Hybrid Professional Master's Degree diploma issued by TECH Technological University via tracked delivery\*.

In addition to the diploma, students will be able to obtain an academic transcript, as well as a certificate outlining the contents of the program. In order to do so, students should contact their academic advisor, who will provide them with all the necessary information.

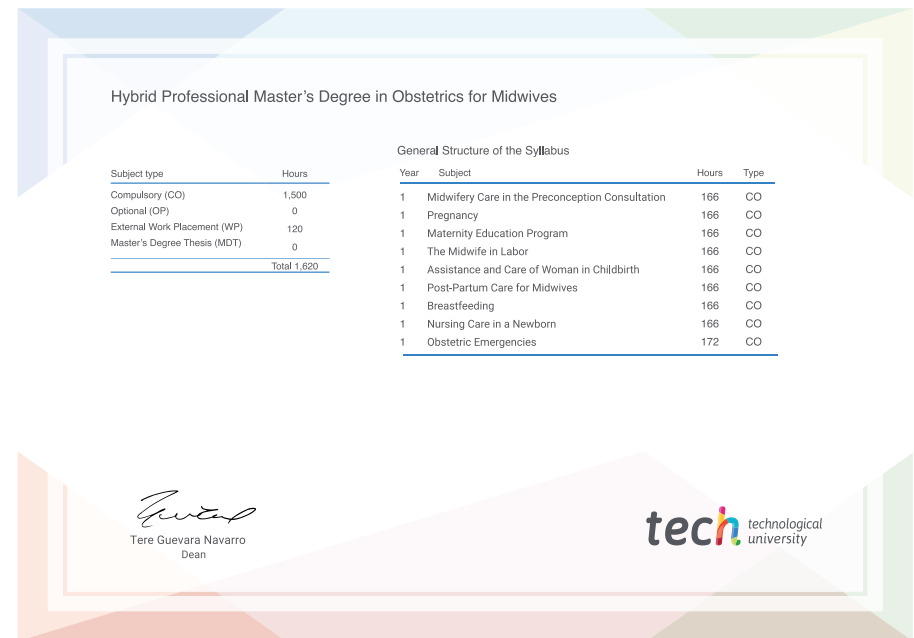
Title: **Hybrid Professional Master's Degree in Obstetrics for Midwives**

Modality: **Hybrid (Online + Clinical Internship)**

Duration: **12 months**

Certificate: **TECH Technological University**

Teaching Hours: **1,620 h.**



\*Apostille Convention. In the event that the student wishes to have their paper diploma issued with an apostille, TECH EDUCATION will make the necessary arrangements to obtain it, at an additional cost.



## Hybrid Professional Master's Degree Obstetrics for Midwives

Modality: Hybrid (Online + Clinical Internship)

Duration: 12 months

Certificate: TECH Technological University

Teaching Hours: 1,620 h.

# Hybrid Professional Master's Degree Obstetrics for Midwives

