

# Hybrid Professional Master's Degree

## Breastfeeding for Midwives



## Hybrid Professional Master's Degree

### Breastfeeding for Midwives

Course Modality: Hybrid (Online + Clinical Internship)

Duration: 12 months

Program: TECH Technological University

Teaching Hours: 1,620 h.

Website: [www.techtitute.com/pk/nursing/hybrid-professional-master-degree/hybrid-professional-master-degree-breastfeeding-midwives](http://www.techtitute.com/pk/nursing/hybrid-professional-master-degree/hybrid-professional-master-degree-breastfeeding-midwives)

# Index

01

Introduction

---

p. 4

02

Why Study this Hybrid  
Professional Master's Degree?

---

p. 8

03

Objectives

---

p. 12

04

Skills

---

p. 18

05

Course Management

---

p. 22

06

Educational Plan

---

p. 28

07

Clinical Internship

---

p. 36

08

Where Can I Do the Clinical  
Internship?

---

p. 42

09

Methodology

---

p. 48

10

Certificate

---

p. 56

# 01

# Introduction

In recent years, research on the composition of breast milk, on the techniques most conducive to promoting breastfeeding, as well as greater social awareness of this vital process for newborns have raised interest in this area. Undoubtedly, a relevant area for midwives, whose profile has acquired greater relevance, given their communication skills and competencies in this field. For this reason, TECH has designed this Hybrid Professional Master's Degree that offers the health care professional a complete update through the most advanced theoretical and 100% online framework and clinical experience, lasting 3 weeks, of first level in a hospital center that is at the forefront in this area.





“

*Thanks to this Hybrid Professional Master's Degree  
you will be at the forefront of Breastfeeding”*

The important benefits of breastfeeding for babies have led various international organizations to raise its importance within the different health systems. In addition, society is becoming more aware of these benefits and of the protection of women during this process of vital importance for the newborn.

In this sense, midwives have seen how research in this area has increased, allowing to know even more about the physical and psychological repercussions that this has for both the mother and the child. Faced with this reality, TECH has developed this 12-month Hybrid Professional Master's Degree that will lead midwives to achieve a complete update in this field.

To this end, this academic itinerary of 1,620 hours will lead the health care professional to delve into the latest scientific evidence on the promotion of breastfeeding, the techniques used, the clinical situations that advise against it, as well as the use of formulas in certain cases. All this through an advanced theoretical framework, complemented by first class didactic material. The culmination of this updating process will come with its practical phase, which will lead students to implement the concepts addressed in a leading hospital environment in this field.

A unique experience that will allow them to develop over 3 weeks in a unique health care environment and surrounded by real professionals in this field. Undoubtedly, it is an ideal opportunity to update your knowledge through an academic option that responds with its pedagogical methodology to the real needs of this health area.

This **Hybrid Professional Master's Degree in Breastfeeding for Midwives** contains the most complete and up-to-date scientific program on the market. The most important features include:

- ◆ More than 100 clinical cases presented by professional nursing experts in Breastfeeding
- ◆ The graphic, schematic, and practical contents with which they are created, provide scientific and practical information on the disciplines that are essential for professional practice
- ◆ Assessment of the patient and physical condition to be able to breastfeed
- ◆ Comprehensive systematized action plans for the main pathologies derived from breastfeeding
- ◆ Presentation of practical workshops on diagnostic and therapeutic techniques for the treatment of conditions caused by poor technique in the breastfeeding process
- ◆ An algorithm-based interactive learning system for decision-making in the clinical situations presented throughout the course
- ◆ Practical clinical guides on approaching different pathologies
- ◆ With a special emphasis on evidence-based medicine and breastfeeding research methodologies
- ◆ All this will be complemented by theoretical lessons, questions to the expert, debate forums on controversial topics, and individual reflection assignments
- ◆ Content that is accessible from any fixed or portable device with an Internet connection
- ◆ Furthermore, you will be able to carry out a clinical internship in one of the best centers on the international scene

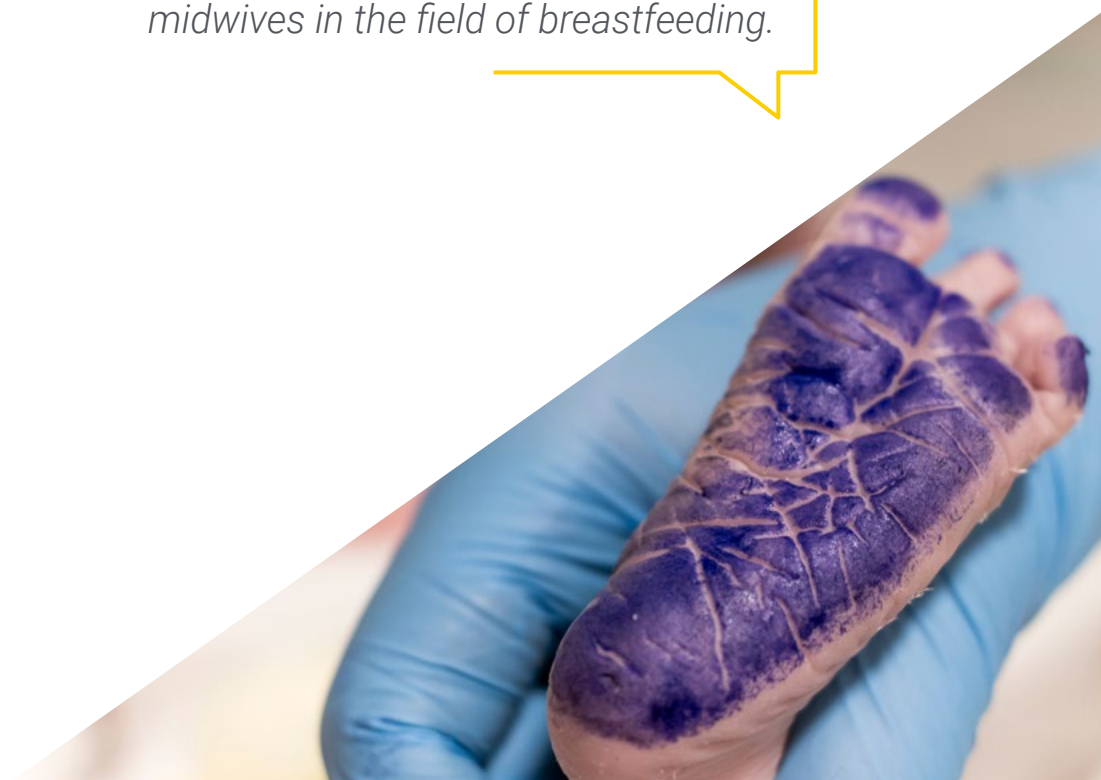
“*Take a 3-week intensive stay, surrounded by real professionals in the field of Breastfeeding*”

This Hybrid Professional Master’s Degree, which has a professional nature and a blended learning modality, is aimed at Nursing professionals who perform their functions in intensive care units, and who require a high level of qualification. The contents are based on the latest scientific evidence, and oriented in an educational way to integrate theoretical knowledge in the Nursing practice, and the theoretical-practical elements will facilitate the updating of knowledge and allow decision-making in patient management.

Thanks to its multimedia content elaborated with the latest educational technology, they will allow the Nursing professional a situated and contextual learning, that is, a simulated environment that will provide an immersive learning programmed to learn in real situations. This program is designed around Problem-Based Learning, whereby the physician must try to solve the different professional practice situations that arise during the course. For this purpose, students will be assisted by an innovative interactive video system created by renowned and experienced experts.

*TECH's Relearning methodology will allow you to consolidate the theoretical concepts in a much more effective way and in less time.*

*Access an academic option that provides a real answer to the needs of midwives in the field of breastfeeding.*



02

# Why Study this Hybrid Professional Master's Degree?

Theoretical knowledge is essential in the health field, but so is the direct care with the patient and its approach to various situations. For this reason, TECH has decided to create this Hybrid Professional Master's Degree that perfectly combines a theoretical phase 100% online, which will allow the graduate to delve into the care during breastfeeding and the most notorious advances, with a first class practical stay in a first class hospital center. In this way, the graduate will achieve, together with the best specialists in this field, a comprehensive update of their knowledge and skills in the field of breastfeeding.







“

*Get involved in a first class environment in the pediatric field and in only 12 months update your knowledge in Breastfeeding with the best”*

### 1. Updating from the latest technology available

New technologies have been integrated into the healthcare field in all its specialties. In this sense, the improvement of analysis, monitoring and breast milk extraction devices facilitates the feeding of the newborn. In this blended learning degree, students will have the opportunity to access the latest advances in this field and integrate them into their daily practice.

### 2. Gaining In-Depth Knowledge from the Experience of Top Specialists

The large team of professionals that will accompany the specialist throughout the entire practical period is a first-rate endorsement and a guarantee of unprecedented updating. With a specifically designated tutor, the student will be able to see real patients in a state-of-the-art environment, which will allow them to incorporate in their daily practice the most effective procedures and approaches in breastfeeding.

### 3. Entering First-Class Clinical Environments

This academic institution has carried out a meticulous process of selection of each of the centers that make up the practical phase, as well as the teaching team, responsible for developing the comprehensive agenda of this program. In this way, the midwife will have the guarantee of accessing an academic option that will allow them to be surrounded by real specialists in the field of midwifery and in a first-rate health care environment.





#### 4. Combining the Best Theory with State-of-the-Art Practice

The academic market is plagued by programs that are poorly adapted to the day-to-day routine of health care professionals. For this reason, TECH has opted for the fusion of the most advanced theory with the highest level of practice in a prestigious clinical center. Thus, the midwife will have access to a dynamic and 100% online theoretical phase and 100% on-site practical phase that will lead them to be up to date with the procedures and technical skills of all health professionals in this field.

#### 5. Expanding the Boundaries of Knowledge

The realization of this academic proposal will lead the midwife not only to obtain an update, but also to receive the most recent and rigorous information from the hand of professionals who have performed their functions in national and international hospitals. In this way, students will integrate into their practice, the most current therapeutics and thus expand the possibilities of professional growth in this field, anywhere in the world.



*You will have full practical immersion  
at the center of your choice”*

# 03 Objectives

The design of this Hybrid Professional Master's Degree has taken into account the most relevant aspects and the most recent scientific evidence on breastfeeding and the role of the midwife in this process. To this end, the teaching team has prepared innovative and rigorous didactic material that is complemented with multimedia pills, specialized readings and case studies. In addition, to complete this update, the practical stay will take place in a distinguished healthcare environment and will be guided by a professional with extensive experience in this field.



“

*Raise your level of care for mothers  
with breastfeeding difficulties”*



## General Objective

---

- The general objective of the Hybrid Professional Master's Degree in Breastfeeding for Midwives is for the professional to update the procedures of the specialty in a theoretical-practical way, through a hospital stay designed with clinical and academic rigor, under the guidance of renowned professionals, in a hospital center of the highest scientific quality and technological innovation. Therefore, the professional will address the main interventions of the specialist, which will allow them to improve and enhance their skills in the medical care of their patients



*Delves into the most relevant theory in this field, subsequently applying it in a real work environment"*





## Specific Objectives

---

### Module 1. Breastfeeding Today and Throughout History

- ◆ Conduct a review of the current global epidemiology of breastfeeding
- ◆ Encourage the proper development of the mother-child relationship, reducing the number of children who are assaulted, abandoned and who fail to progress without organic cause
- ◆ Encourage breastfeeding to achieve adequate growth and development, preventing future health problems

### Module 2. Physiology and Clinical History in Breastfeeding

- ◆ Update knowledge about the Physiology of Breastfeeding
- ◆ Describe the anatomy of the lactating breast
- ◆ Define the characteristics of a milk bank

### Module 3. Breastfeeding Care and Breastfeeding Women's Health

- ◆ Provide information on nutrition for the breastfeeding mother
- ◆ Describe the rights of women during Breastfeeding

### Module 4. The Healthy Newborn

- ◆ Explain the benefits of breastfeeding for women's postpartum and long-term recovery
- ◆ Explain the different breastfeeding positions and their indications

### Module 5. Problems During Breastfeeding

- ◆ Train mothers in the care of the newborn and in the resolution of common infant health problems
- ◆ Detect bad latching positions of the baby that may alter the baby's feeding development

#### **Module 6. Other Types of Breastfeeding**

- ♦ Explain other types of infant feeding and their substitution or combination with breastfeeding
- ♦ Explain the different bottle preparation techniques and their advantages and disadvantages

#### **Module 7. Breastfeeding in Special Situations**

- ♦ Explain the benefits of physical activity during Breastfeeding
- ♦ Describe the main contraindications of breastfeeding

#### **Module 8. Common Situations During Breastfeeding**

- ♦ Counsel the mother who works outside the home and wishes to continue breastfeeding
- ♦ Teach the steps to be followed to achieve successful exclusive breastfeeding

#### **Module 9. Drugs and Breastfeeding**

- ♦ Obtain knowledge about the transfer of drugs to breast milk in order to guide women in their doubts when taking medications
- ♦ Define appropriate treatment of breast and nipple associated complications

#### **Module 10. Associations of Breastfeeding Initiatives and Legislation**

- ♦ Describe paternal involvement in the breastfeeding process
- ♦ Promote active participation in the care of the newborn and in the monitoring of its growth and development





### **Module 11. Diseases and Breastfeeding**

- ◆ Debunk false myths and false contraindications of breastfeeding
- ◆ Coverage of HIV and Hepatitis condition with respect to breastfeeding
- ◆ Study the possible difficulties of the newborn in special breastfeeding situations
- ◆ Understand the impact of breastfeeding on maternal conditions

### **Module 12. Maternal Inhibition or Weaning**

- ◆ Define strategies to counsel and accompany women who do not wish to breastfeed
- ◆ Explain erroneous beliefs about breastfeeding

“

*Students have access to innovative teaching material 24 hours a day, 7 days a week”*

# 04 Skills

This Hybrid Professional Master's Degree in Breastfeeding for Midwives is configured to provide over 12 months, the skills and abilities to perform with guarantees in this area. All this leads to the provision of quality clinical care, responding to the needs of each patient and promoting communication skills in a natural process that can sometimes present difficulties for women or newborns.



“

*Update your knowledge on pharmacology suitable for breastfeeding women”*



## General Skills

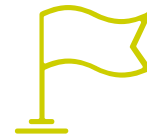
---

- ♦ Describe all the advances regarding breastfeeding in the international panorama
- ♦ Act in support of the nursing mother at all stages of the process
- ♦ Promoting successful breastfeeding implementation
- ♦ Promote prolonged maintenance of breastfeeding
- ♦ Intervene in special cases of the mother and infant
- ♦ Support during the end of the breastfeeding process
- ♦ Know about medications and their compatibility with breastfeeding
- ♦ Support for the mothers with breastfeeding disorders
- ♦ Support for the mother with an infant who is having difficulty or is unable to breastfeed



*With this degree you will have enough weapons to dismantle any myths or false beliefs about breastfeeding”*





## Specific Skills

---

- ♦ Describe the historical processes of breastfeeding
- ♦ Use of human milk banks
- ♦ Supporting the woman who does or does not want to breastfeed
- ♦ Describe the benefits of breast milk for the baby
- ♦ Make and advise on proper latch
- ♦ Teaching correct and incorrect postures
- ♦ Performing a care regimen during pregnancy
- ♦ List the foods that benefit breastfeeding
- ♦ Know what type of exercise is recommended during lactation
- ♦ Describe the nutritional needs of the infant
- ♦ Perform an infant growth curve and interpret it
- ♦ Intervene and advise on infant colic
- ♦ Know the benefits of skin-to-skin systems
- ♦ Describe the contraindications of breastfeeding
- ♦ Recognize contraindicated maternal pathologies
- ♦ Recognize contraindicated childhood pathologies
- ♦ Know and intervene in breast engorgement
- ♦ Know and intervene in mastitis
- ♦ Know which breastfeeding support devices to use and how to use them
- ♦ Mastering breastfeeding techniques

05

# Course Management

TECH has assembled a complete team of teachers with reputable knowledge in the area of breastfeeding. The conjunction of their practical skills with the latest scientific theory makes the program stand out and come close to the current reality of this health field. In addition, given its proximity, the alumni will be able to answer any questions you may have with the specialized teaching team that integrates this program.



“

*Professionals with extensive involvement in the field of Breastfeeding are responsible for the development of this Hybrid Professional Master's Degree”*

## Management



### **Ms. Aguilar Ortega, Juana María**

- Breastfeeding Coordinator at Hospital 12 de Octubre
- Neonatal Nurse at the 12 de Octubre Hospital
- Co-author of studies on Breastfeeding during Puerperium.
- Teacher in university studies of Nurses
- Certified Lactation Consultant



## Professors

### Dr. Vázquez Lara, Juana María

- ♦ Primary Care Nurse
- ♦ Emergency Service of 061 Nurse of the Ceuta Health Management Area
- ♦ PhD from the University of Granada
- ♦ Acting midwife of the Childbirth Department at the University Hospital of Ceuta
- ♦ Head of Studies of the Ceuta Midwifery Teaching Unit
- ♦ Professor in the Ceuta Midwifery Teaching Unit
- ♦ National Coordinator of the Obstetrical-Gynecological Emergencies Working Group of the Spanish Society of Emergency Nursing (SEEUE)
- ♦ Master's Degree of the Official Doctoral Program in Physical Education and Health
- ♦ Postgraduate Diploma on "Health Promotion in the Community" UNED
- ♦ Specialty in Obstetric and Gynecological Nursing (Midwife) at the Hospital Costa del Sol in Marbella of the University School of Nursing and Midwifery of Málaga at the University of Málaga
- ♦ Postgraduate Certificate in Nursing from the University School of Nursing Salus Infirmorum at the University of Cadiz

### Ms. Del Pozo Álvarez, Lidia

- ♦ Expert nurse midwife in Gynecology and Obstetrics
- ♦ Midwife at University Hospital of Ceuta
- ♦ Midwife in health centers in Cordoba
- ♦ Midwife in health centers in Lanzarote

### Dr. Rodríguez Díaz, Luciano

- ♦ Nurse Specialist in Obstetrics and Gynecology
- ♦ Head of Studies of the Obstetric-Gynecological Nursing Teaching Unit (Midwife) of the University Hospital of Ceuta
- ♦ Midwife at the University Hospital of Ceuta
- ♦ Teacher at the University Centre of Nursing Virgen of La Paz Ronda, Spain
- ♦ Professor of the Ceuta Midwifery Teaching Unit
- ♦ Obstetrical-Gynecological Emergencies Working Group of the Spanish Society of Emergency Nursing (SEEUE) Vocal
- ♦ Responsible for Perinatal Health: Reproductive Sexual Health and Normal Childbirth of Ingesa
- ♦ Member of the Clinical Commission for Research and Continuing Education of the University Hospital of Ceuta
- ♦ Member of the Instituto de Estudios Ceutíes, Editorial Board of the European Journal of Health Research and the Spanish Society of Emergency Medicine
- ♦ PhD from the University of Granada
- ♦ Professional Master's Degree in Physical Education and Health from the University of Granada
- ♦ Professional Master's Degree in Gynecological Nursing from the CEU Cardenal Herrera University
- ♦ Professional Master's Degree in Obstetric Nursing from the CEU Cardenal Herrera University
- ♦ Speciality in Nursing Obstetric and Gynecological from the University of Málaga
- ♦ Postgraduate Certificate in Nursing, University of Cádiz
- ♦ Postgraduate Diploma in Community Health Promotion from the National University of Distance Education (UNED)

**Ms. Armijo Navarro, Elena**

- ♦ Midwife San Sebastián Hospital

**Mr. Carrasco Guerrero, Manuel**

- ♦ Midwife at the University Hospital of Ceuta
- ♦ Obstetric-Gynecological Nursing Specialization
- ♦ Best oral communication Prize at the International Congress of Nursing and Physiotherapy of Ceuta and Melilla

**Ms. De Dios Pérez, María Isabel**

- ♦ Midwife at the University Hospital of Zaragoza
- ♦ Postgraduate Certificate in Nursing
- ♦ Nurse Specialist in Obstetrics and Gynecology

**Ms. Molina Castillo, María De la Cabeza**

- ♦ Midwife Ceuta University Hospital

**Ms. Díaz Lozano, Paula**

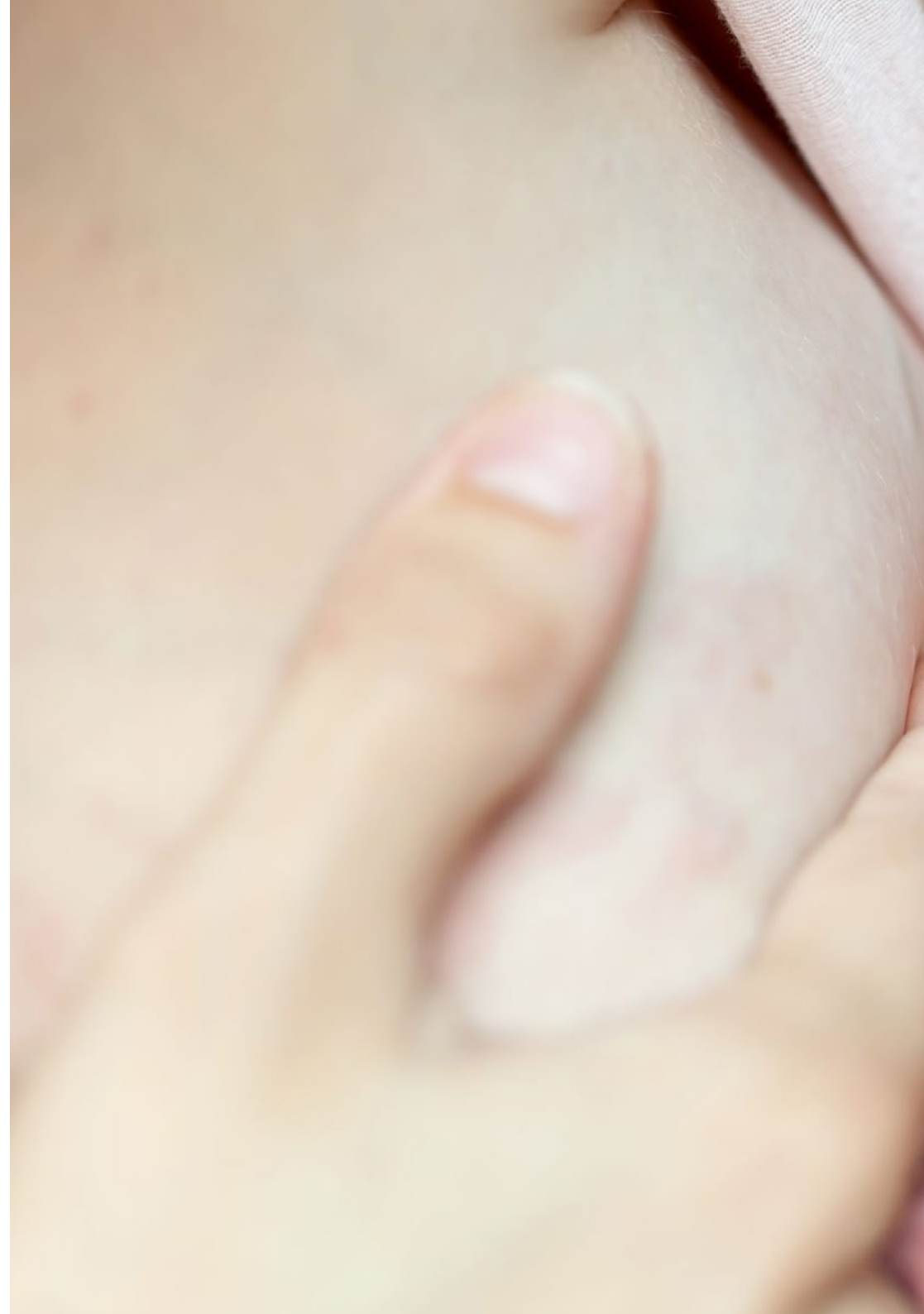
- ♦ Midwife in the University Hospital Virgen de Valme
- ♦ Midwife in the Ceuta Health Area
- ♦ Nurse Specialist in Obstetrics and Gynecology, University Hospital of Ceuta
- ♦ Teacher specialized in Obstetrics
- ♦ Diploma in Nursing by Faculty of Nursing and Physiotherapy of Cádiz

**Ms. Gómez González, Irene**

- ♦ Midwife Ceuta University Hospital

**Ms. Mohamed Mohamed, Dina**

- ♦ Midwife Ceuta University Hospital





**Ms. Hachero Rodríguez, Carmen María**

- ◆ Midwife at the Hospital of Zaragoza
- ◆ Member of the Board of Directors of the Andalusian Association of Midwives
- ◆ Training spokesperson

**Ms. Rojas Carmona, Belén**

- ◆ Midwife Ceuta University Hospital

**Ms. Ortega del Valle, Silvia**

- ◆ Midwife at the University Hospital of Salamanca
- ◆ Marqués de Valdecilla University Hospital Nurse
- ◆ Professional Master's Degree in Perinatal and of Early Childhood-Sanitary Care from the Autonomous University of Madrid FUDEN
- ◆ Professional Master's Degree in Breastfeeding for Midwives by the Cardenal Herrera University
- ◆ Nurse specialized in Obstetric-Gynecological Nursing by the UDM of Ceuta
- ◆ Postgraduate Certificate in Nursing from the Pontificia University of Salamanca

**Ms. Miquelajáuregui Espinosa, Araceli**

- ◆ Midwife Ceuta University Hospital

**Ms. Martínez Picón, Claudia**

- ◆ Midwife at Costa del Sol Hospital
- ◆ Midwife at the University Hospital of Ceuta
- ◆ Postgraduate Certificate in Nursing

**Ms. Martín Ansede, Esperanza**

- ◆ Pediatric nurse. University Hospital of Ceuta

# 06

## Educational Plan

The academic itinerary of this Hybrid Professional Master's Degree in Breastfeeding for Midwives leads health professionals to obtain a complete update, from the very first moment. In this sense, it will delve through innovative teaching resources on care during breastfeeding, breastfeeding women's health, diseases during this process, pharmacology appropriate to different clinical cases, among other aspects. A syllabus, accessible from any digital device with Internet connection. To conclude this refresher course, the students will have a practical stay that will lead them to verify in situ the concepts addressed in the theoretical framework.





“

*A complete syllabus that will take you 12 months to complete an exhaustive update on Breastfeeding”*

## Module 1. Breastfeeding Today and Throughout History

- 1.1. Concepts Related to Breastfeeding
  - 1.1.1. Evolution of the Concept of Breastfeeding
  - 1.1.2. Breastfeeding Concepts
- 1.2. History of Breastfeeding
  - 1.2.1. Natural History of Breastfeeding
  - 1.2.2. Historical Development of The Importance of Breastfeeding
- 1.3. False Myths
  - 1.3.1. Misconceptions About Breastfeeding
  - 1.3.2. Correct Beliefs About Breastfeeding
- 1.4. Care Strategy for Normal Childbirth
  - 1.4.1. Encouraging Breastfeeding after Childbirth
  - 1.4.2. Benefits of Breastfeeding in Childbirth
- 1.5. Epidemiology
  - 1.5.1. Epidemiological Course of Breastfeeding Development
  - 1.5.2. Social Evolution of Breastfeeding
- 1.6. Human Milk Banks
  - 1.6.1. Milk Bank Concept
  - 1.6.2. Characteristics of a Milk Bank
- 1.7. Counseling and Support for Women Who Do Not Wish to Breastfeed
  - 1.7.1. Health Education for Women Do Not Wish to Breastfeed
  - 1.7.2. Specific Information on Care for Non Lactating Women
- 1.8. Women's Rights During Breastfeeding
  - 1.8.1. The Immediate Rights of the Infant
  - 1.8.2. Social Benefits in Breastfeeding Women
- 1.9. Paternal Involvement in Breastfeeding
  - 1.9.1. The Father as a Supporting Figure in Breastfeeding
  - 1.9.2. The Father as a Breastfeeding Consultant
- 1.10. Protection of Breastfeeding Worldwide: WHO Recommendations
  - 1.10.1. WHO Recommendations
  - 1.10.2. Global Protection in Breastfeeding



## Module 2. Physiology and Clinical History in Breastfeeding

- 2.1. Anatomy of the Breast
  - 2.1.1. Surrounding Bony Structure of the Breast
  - 2.1.2. Muscular Structure of the Breast
- 2.2. Physiology of Breastfeeding
  - 2.2.1. Physiological Development of Breastfeeding
  - 2.2.2. Hormonal Circuit of Breastfeeding
- 2.3. Benefits of Breastfeeding for the Mother
  - 2.3.1. Concept
  - 2.3.2. The Benefits for the Mother in Breastfeeding
- 2.4. Benefits of Breastfeeding for the Baby
  - 2.4.1. Concept
  - 2.4.2. The Benefits for the Baby in Breastfeeding
- 2.5. Evaluation of the Intake
  - 2.5.1. Indications on the Intake
  - 2.5.2. Inadequate Actions on the Intake
- 2.6. Signs of Good and Bad Latching
  - 2.6.1. Latching Concept
  - 2.6.2. Benefits of a Good Latch
- 2.7. Recommended Positions
  - 2.7.1. Proper Breastfeeding Positions
  - 2.7.2. Inadequate Breastfeeding Positions

## Module 3. Breastfeeding Care and Breastfeeding Women's Health

- 3.1. First Recommendations during Pregnancy
  - 3.1.1. Evolution of Breastfeeding in Pregnancy
  - 3.1.2. Breastfeeding Care in Pregnancy
- 3.2. Breast Care during Breastfeeding
  - 3.2.1. General Care.
  - 3.2.2. Specific Advice
- 3.3. Proper Techniques for Breastfeeding
  - 3.3.1. Different Breastfeeding Techniques
  - 3.3.2. Incorrect Breastfeeding Measures

- 3.4. Effects of Breastfeeding on Women's Health in the Short Term
  - 3.4.1. Immediate Benefits of Breastfeeding in Women
  - 3.4.2. Positive Breastfeeding Tips
- 3.5. Effects of Breastfeeding on Women's Health in the Mid- and Long-Term
  - 3.5.1. Long-term Benefits of Breastfeeding
  - 3.5.2. Mid-term Benefits of Breastfeeding
- 3.6. Maternal Diet and Breastfeeding
  - 3.6.1. Foods that alter Breast Milk
  - 3.6.2. Foods that benefit Breastfeeding
- 3.7. Physical Activity and Breastfeeding
  - 3.7.1. Encouraging Physical Activity During Breastfeeding
  - 3.7.2. Contraindications to Physical Activity During Breastfeeding

## Module 4. The Healthy Newborn

- 4.1. Anatomical and Physiological Characteristics
  - 4.1.1. Anatomy of the Newborn
  - 4.1.2. Physiology of the Newborn
- 4.2. Nutritional Requirements of the Infant
  - 4.2.1. Infant Nutrition
  - 4.2.2. Dietary Advice
- 4.3. Growth of Breastfed Infants
  - 4.3.1. WHO Curves
  - 4.3.2. Normality in the Curve
- 4.4. Infantile Colic.
  - 4.4.1. Concept
  - 4.4.2. Indications to Avoid Infant Colic
- 4.5. Early Skin-to-skin Contact
  - 4.5.1. The Skin-to-skin Start
  - 4.5.2. Immediate Skin-to-skin Benefits
- 4.6. First Intake Attachment
  - 4.6.1. Concept of Attachment
  - 4.6.2. Indications of Onset of Contact

- 4.7. Breastfeeding and Kangaroo Mother Method
  - 4.7.1. Kangaroo Method Approach
  - 4.7.2. Start of the Technique
- 4.8. Nipples and Pacifiers During Breastfeeding
  - 4.8.1. Description of Nipples and Pacifiers
  - 4.8.2. Precautions for Nipples and Pacifiers

### Module 5. Problems During Breastfeeding

- 5.1. Contraindications for Breastfeeding
  - 5.1.1. Situations that Contraindicate Breastfeeding
  - 5.1.2. Nutritional
- 5.2. Maternal Pathologies that Contraindicate Breastfeeding
  - 5.2.1. List Maternal Pathologies that Contraindicate Breastfeeding
  - 5.2.2. Counseling on Contraindications to Breastfeeding
- 5.3. Newborn Pathologies that Contraindicate Breastfeeding
  - 5.3.1. List Neonatal Pathologies that Contraindicate Breastfeeding
  - 5.3.2. Counseling on Contraindications to Breastfeeding
- 5.4. Nipple Problems
  - 5.4.1. Different Types of Nipples
  - 5.4.2. Support for the Mother
- 5.5. Mammary Ingurgitation
  - 5.5.1. Concept
  - 5.5.2. Adequate Treatment
- 5.6. Mastitis
  - 5.6.1. Concept
  - 5.6.2. Adequate Treatment
- 5.7. Aids and Devices to Assist in Breastfeeding
  - 5.7.1. Different Breastfeeding Devices
  - 5.7.2. How to help Breastfeeding?

### Module 6. Other Types of Breastfeeding

- 6.1. Artificial Breastfeeding
  - 6.1.1. Concept
  - 6.1.2. Development of the Technique
- 6.2. Formula Milk: Handling and Disadvantages
  - 6.2.1. Formula Milk Preparation
  - 6.2.2. Benefits and Drawbacks
- 6.3. Preparation of a Baby Bottle
  - 6.3.1. Technique for Preparing a Baby Bottle
  - 6.3.2. Sterilizing Baby Bottles
- 6.4. Mixed Breastfeeding
  - 6.4.1. Concept
  - 6.4.2. How to Carry it Out?
- 6.5. Relactation
  - 6.5.1. Concept
  - 6.5.2. Indications
- 6.6. Combination of Breastfeeding with Nutrition
  - 6.6.1. Complementary Nutrition
  - 6.6.2. Nutritional Needs

### Module 7. Breastfeeding in Special Situations

- 7.1. Hypogalactia
  - 7.1.1. Concept
  - 7.1.2. Measures to Treat
- 7.2. Sick Newborns
  - 7.2.1. Different Pathologies
  - 7.2.2. Breastfeeding in Children with Pathologies
- 7.3. Prematurity
  - 7.3.1. Definition of Prematurity
  - 7.3.2. Breastfeeding in Premature Infants
- 7.4. Teenage Mothers
  - 7.4.1. Breastfeeding in Teenage Mothers
  - 7.4.2. Problems in Teenage Mothers



- 7.5. Breastfeeding and LAM
  - 7.5.1. Concept
  - 7.5.2. Benefits of LAM
- 7.6. Cleft Lip and Lip Malformations
  - 7.6.1. Concept
  - 7.6.2. Support for Newborns and Breastfeeding Mothers
- 7.7. Breastfeeding and New Pregnancy
  - 7.7.1. Tandem Breastfeeding
  - 7.7.2. Nutritional
- 7.8. Breastfeeding and Stress
  - 7.8.1. Stress as a Detriment to Breastfeeding
  - 7.8.2. Measures to Cope with Stress

## Module 8. Common Situations During Breastfeeding

- 8.1. Crying and Breast Refusal
  - 8.1.1. Concept
  - 8.1.2. Immediate Attention
- 8.2. Breastfeeding Strike
  - 8.2.1. Concept
  - 8.2.2. Strike Counseling
- 8.3. Prolonged and Tandem Breastfeeding
  - 8.3.1. Concept
  - 8.3.2. Benefits
- 8.4. Co-Sleeping
  - 8.4.1. Concept
  - 8.4.2. Benefits of Co-sleeping
- 8.5. Working Outside the Home and Breastfeeding
  - 8.5.1. Incorporation into Work
  - 8.5.2. Support in this Situation
- 8.6. Milk Extraction: Methods and Tools
  - 8.6.1. Parts of the Breast Pump
  - 8.6.2. Use of the Breast Pump
- 8.7. Transport and Storage of Breast Milk
  - 8.7.1. Milk Storage Mechanisms
  - 8.7.2. Milk Transport

## Module 9. Drugs and Breastfeeding

- 9.1. Transfer of Drugs and Other Elements into Breast Milk
  - 9.1.1. Concept
  - 9.1.2. Medication Administration Contraindications
- 9.2. Drug Interaction and Breastfeeding
  - 9.2.1. Drug Interaction
  - 9.2.2. Medication administration
- 9.3. Most Commonly Used Drugs During Breastfeeding
  - 9.3.1. Drugs Indicated for Breastfeeding
  - 9.3.2. Indications
- 9.4. Web-based Resources and Tools on Drugs and Breastfeeding
  - 9.4.1. Web about Breastfeeding and Drugs
  - 9.4.2. How to Search Online?
- 9.5. Harmful Substances and Breastfeeding
  - 9.5.1. Different Harmful Substances in Breastfeeding
  - 9.5.2. Attitude Towards the Ingestion of Harmful Substances

## Module 10. Associations of Breastfeeding Initiatives and Legislation

- 10.1. Support Groups
  - 10.1.1. Concept
  - 10.1.2. Different Support Groups
- 10.2. Lactation Consultants
  - 10.2.1. Concept of Consultants
  - 10.2.2. Consultant's Roles
- 10.3. Innocenti Statement
  - 10.3.1. Protecting Breastfeeding Globally
  - 10.3.2. Protection Treaty
- 10.4. WHO Baby-Friendly Hospital Initiative (BFHI)
  - 10.4.1. Characteristics of the Initiative
  - 10.4.2. Objectives to be Met

- 10.5. Legislation for the Protection of Breastfeeding
  - 10.5.1. Current Legislation
  - 10.5.2. Rights and Responsibilities
- 10.6. Recommended Websites
  - 10.6.1. Online queries
  - 10.6.2. Web Credibility

## Module 11. Diseases and Breastfeeding

- 11.1. Concept
  - 11.1.1. Definition of Diseases and Breastfeeding
  - 11.1.2. Performance
- 11.2. Absolute and False Contraindications
  - 11.2.1. Contraindications
  - 11.2.2. False Myths
- 11.3. HIV and Breastfeeding
  - 11.3.1. Concept
  - 11.3.2. Indications for Breastfeeding
- 11.4. Hepatitis and Breastfeeding
  - 11.4.1. Concept
  - 11.4.2. Indications for Breastfeeding
- 11.5. Oncological Processes and Breastfeeding
  - 11.5.1. Cancer and Breastfeeding
  - 11.5.2. Indications for Oncologic Process and Breastfeeding Mother
- 11.6. Special Situations in the Newborn that make Breastfeeding Difficult
  - 11.6.1. Newborn Special Situations
  - 11.6.2. Mechanisms for Adapting Special Situations and Breastfeeding
- 11.7. How to Promote Breastfeeding in Maternal-Fetal Conditions?
  - 11.7.1. Concept
  - 11.7.2. Encourage Breastfeeding In Situ



**Module 12. Maternal Inhibition or Weaning**

- 12.1. Concept and Types
  - 12.1.1. Types of Inhibition
  - 12.1.2. Mechanism for Progressive Weaning
- 12.2. Physiology of Breastfeeding Inhibition
  - 12.2.1. Physiology of Inhibition
  - 12.2.2. Indications to Inhibit Breastfeeding
- 12.3. Ways to Speed Weaning
  - 12.3.1. How and When to Wean?
  - 12.3.2. How to Start Progressive Weaning?
- 12.4. Prolonged Breastfeeding
  - 12.4.1. Concept
  - 12.4.2. Benefits and Detriments
- 12.5. Medications Associated with Breastfeeding Inhibition
  - 12.5.1. Medication for Inhibition
  - 12.5.2. Indications
- 12.6. Entering Labor Market
  - 12.6.1. Stressful Situation on Incorporation
  - 12.6.2. Advice and Assistance



*Thanks to this Hybrid Professional Master's Degree you will be up to date on the most effective weaning or inhibition strategies"*

07

# Clinical Internship

Once the online theoretical period is over, students will enter a stage marked by the presence in a prestigious clinical center. In this scenario, they will be guided at all times by a professional with experience in the care of nursing mothers and newborns. A favorable scenario to culminate a unique and effective updating process.



A close-up photograph of a baby's hand resting on a person's arm. The baby's hand is small and delicate, with visible skin texture. The person's arm is a warm, light brown color. The background is softly blurred, showing more of the person's arm and the baby's body. The image is partially obscured by a dark green diagonal overlay in the top right corner.

“

*TECH provides you with a clinical internship in one of the best hospitals in the area of Breastfeeding”*

The Internship Program of this program consists of a practical stay of 3 weeks from Monday to Friday, with 8 consecutive hours with a health professional with extensive knowledge of breastfeeding. This stay will take the students to attend real patients, in different situations, where they will have to apply the most effective techniques to promote breastfeeding or the most appropriate communication skills to inform about the breastfeeding process.

All this, moreover, in a health care environment that is at the forefront in this area and that is firmly committed to the updating of its own professionals in order to promote care and clinical attention. Likewise, this period leads to the most authentic practice, integrating the concepts covered in the theoretical framework, in first class clinical facilities.

Undoubtedly, TECH has developed a proposal that leads to the improvement of skills, surrounded by the best specialists in this field. In this way, the graduate will obtain an unparalleled experience that will allow him/her to practice the activity, in a safe environment for the patient and with a high professional performance.

The practical training will be carried out with the active participation of the student, performing the activities and procedures of each area of competence (learning to learn and learning to do), with the accompaniment and guidance of teachers and other fellow trainees to facilitate teamwork and multidisciplinary integration as transversal competencies for the practice of midwifery (learning to be and learning to relate).



The procedures described below will be the basis of the practical part of the training, and their implementation will be subject to the center's own availability and workload, the proposed activities being the following:

Module	Practical Activity
<b>Management techniques for breastfeeding difficulties in breastfeeding</b>	Simulate and practice techniques for resolving common problems during breastfeeding, such as engorgement or mastitis
	Practical demonstrations on the use of breastfeeding aids such as nipple shields or breast pumps
	Develop educational materials, such as brochures or videos, that address breastfeeding difficulties and offer solutions
<b>Breastfeeding in Special Situations</b>	Collaborate in discussions on breastfeeding in situations of hypogalactia or sick newborns
	Assisting in the care of premature breastfeeding cases, highlighting the strategies used and the benefits obtained
	Conduct awareness and support activities for adolescent mothers who wish to breastfeed, addressing their specific challenges
<b>Communication and counseling in breastfeeding</b>	Practice effective communication skills and empathy in the breastfeeding counseling consultation through role plays or simulations breastfeeding, through role-playing or simulations
	Conduct literature research on drugs and breastfeeding, and develop a reference guide for health professionals
	Design and carry out breastfeeding counseling workshops for mothers and fathers, providing information and resolving doubts



*Receive specialized education in an institution that can offer you all these possibilities, with an innovative academic program and a human team that will help you develop your full potential"*

## Civil Liability Insurance

This institution's main concern is to guarantee the safety of the trainees and other collaborating agents involved in the internship process at the company. Among the measures dedicated to achieve this is the response to any incident that may occur during the entire teaching-learning process.

To this end, this entity commits to purchase a civil liability insurance policy to cover any eventuality that may arise during the course of the internship at the center.

This liability policy for interns will have broad coverage and will be taken out prior to the start of the practical training period. That way professionals will not have to worry in case of having to face an unexpected situation and will be covered until the end of the program at the center.





## General Conditions of the Internship Program

The general terms and conditions of the internship program agreement shall be as follows:

**1. TUTOR:** During the Hybrid Professional Master's Degree, students will be assigned with two tutors who will accompany them throughout the process, answering any doubts and questions that may arise. On the one hand, there will be a professional tutor belonging to the internship center who will have the purpose of guiding and supporting the student at all times. On the other hand, they will also be assigned with an academic tutor whose mission will be to coordinate and help the students during the whole process, solving doubts and facilitating everything they may need. In this way, the student will be accompanied and will be able to discuss any doubts that may arise, both clinical and academic.

**2. DURATION:** The internship program will have a duration of three continuous weeks, in 8-hour days, 5 days a week. The days of attendance and the schedule will be the responsibility of the center and the professional will be informed well in advance so that they can make the appropriate arrangements.

**3. ABSENCE:** If the students does not show up on the start date of the Hybrid Professional Master's Degree, they will lose the right to it, without the possibility of reimbursement or change of dates. Absence for more than two days from the internship, without justification or a medical reason, will result in the professional's withdrawal from the internship, therefore, automatic termination of the internship. Any problems that may arise during the course of the internship must be urgently reported to the academic tutor.

**4. CERTIFICATION:** Professionals who pass the Hybrid Professional Master's Degree will receive a certificate accrediting their stay at the center.

**5. EMPLOYMENT RELATIONSHIP:** the Hybrid Professional Master's Degree shall not constitute an employment relationship of any kind.

**6. PRIOR EDUCATION:** Some centers may require a certificate of prior education for the Hybrid Professional Master's Degree. In these cases, it will be necessary to submit it to the TECH internship department so that the assignment of the chosen center can be confirmed.

**7. DOES NOT INCLUDE:** The Hybrid Professional Master's Degree will not include any element not described in the present conditions. Therefore, it does not include accommodation, transportation to the city where the internship takes place, visas or any other items not listed.

However, students may consult with their academic tutor for any questions or recommendations in this regard. The academic tutor will provide the student with all the necessary information to facilitate the procedures in any case.

# 08

## Where Can I Do the Clinical Internship?

This institution has taken into account the quality of care and the excellent profile of the professionals of the hospital centers for their selection. In this way, the students have a first class guarantee in the realization of this process of practical updating of their competences in the field of breastfeeding. A unique experience that will allow them to get involved in different clinical situations in a first class health care environment.





“

*Get a unique clinical experience with  
the best experts in Breastfeeding”*



The student will be able to complete the practical part of this Hybrid Professional Master's Degree at the following centers:



Nursing

### Hospital Maternidad HM Belén

Country	City
Spain	La Coruña

Address: R. Filantropía, 3, 15011, A Coruña

Network of private clinics, hospitals and specialized centers distributed throughout Spain.

**Related internship programs:**

- Update in Assisted Reproduction
- Hospitals and Health Services Management



Nursing

### Hospital HM Rosaleda

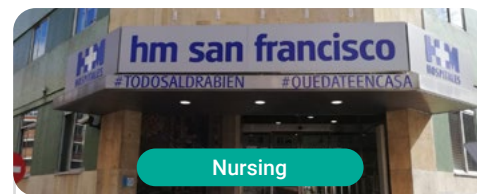
Country	City
Spain	La Coruña

Address: Rúa de Santiago León de Caracas, 1, 15701, Santiago de Compostela, A Coruña

Network of private clinics, hospitals and specialized centers distributed throughout Spain.

**Related internship programs:**

- Hair Transplantation
- Orthodontics and Dentofacial Orthopedics



Nursing

### Hospital HM San Francisco

Country	City
Spain	León

Address: C. Marqueses de San Isidro, 11, 24004, León

Network of private clinics, hospitals and specialized centers distributed throughout Spain.

**Related internship programs:**

- Update in Anesthesiology and Resuscitation
- Trauma Nursing



Nursing

### Hospital HM Regla

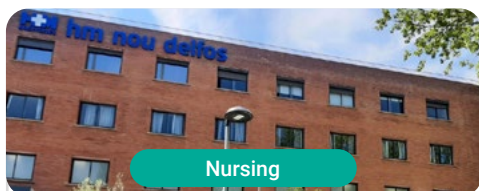
Country	City
Spain	León

Address: Calle Cardenal Landázuri, 2, 24003, León

Network of private clinics, hospitals and specialized centers distributed throughout Spain.

**Related internship programs:**

- Update on Psychiatric Treatment in Minor Patients



Nursing

### Hospital HM Nou Delfos

Country	City
Spain	Barcelona

Address: Avinguda de Vallcarca, 151, 08023 Barcelona

Network of private clinics, hospitals and specialized centers distributed throughout Spain.

**Related internship programs:**

- Aesthetic Medicine
- Clinical Nutrition in Medicine



Nursing

### Hospital HM Madrid

Country	City
Spain	Madrid

Address: Pl. del Conde del Valle de Súchil, 16, 28015, Madrid

Network of private clinics, hospitals and specialized centers distributed throughout Spain.

**Related internship programs:**

- Palliative Care
- Anaesthesiology and Resuscitation



Nursing

### Hospital HM Montepíncipe

Country	City
Spain	Madrid

Address: Av. de Montepíncipe, 25, 28660, Boadilla del Monte, Madrid

Network of private clinics, hospitals and specialized centers distributed throughout Spain.

**Related internship programs:**

- Palliative Care
- Aesthetic Medicine



Nursing

### Hospital HM Torrelodones

Country	City
Spain	Madrid

Address: Av. Castillo Olivares, s/n, 28250, Torrelodones, Madrid

Network of private clinics, hospitals and specialized centers distributed throughout Spain.

**Related internship programs:**

- Anaesthesiology and Resuscitation
- Palliative Care



### Hospital HM Sanchinarro

Country	City
Spain	Madrid

Address: Calle de Oña, 10, 28050, Madrid

Network of private clinics, hospitals and specialized centers distributed throughout Spain.

**Related internship programs:**

- Anaesthesiology and Resuscitation
- Palliative Care



### Hospital HM Nuevo Belén

Country	City
Spain	Madrid

Address: Calle José Silva, 7, 28043, Madrid

Network of private clinics, hospitals and specialized centers distributed throughout Spain.

**Related internship programs:**

- General and Digestive System Surgery
- Clinical Nutrition in Medicine



### Policlínico HM Distrito Telefónica

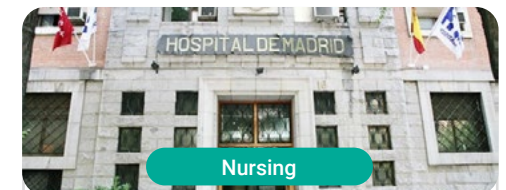
Country	City
Spain	Madrid

Address: Ronda de la Comunicación, 28050, Madrid

Network of private clinics, hospitals and specialized centers distributed throughout Spain.

**Related internship programs:**

- Optical Technologies and Clinical Optometry
- General and Digestive System Surgery



### Policlínico HM Gabinete Velázquez

Country	City
Spain	Madrid

Address: C. de Jorge Juan, 19, 1° 28001, Madrid

Network of private clinics, hospitals and specialized centers distributed throughout Spain.

**Related internship programs:**

- Clinical Nutrition in Medicine
- Aesthetic Plastic Surgery



Nursing

### Hospital HM Puerta del Sur

Country	City
Spain	Madrid

Address: Av. Carlos V, 70, 28938, Móstoles, Madrid

Network of private clinics, hospitals and specialized centers distributed throughout Spain.

**Related internship programs:**

- Palliative Care
- Clinical Ophthalmology



Nursing

### Policlínico HM Cruz Verde

Country	City
Spain	Madrid

Address: Plaza de la Cruz Verde, 1-3, 28807, Alcalá de Henares, Madrid

Network of private clinics, hospitals and specialized centers distributed throughout Spain.

**Related internship programs:**

- Advanced Clinical Podiatry
- Optical Technologies and Clinical Optometry



Nursing

### Policlínico HM La Paloma

Country	City
Spain	Madrid

Address: Calle Hilados, 9, 28850, Torrejón de Ardoz, Madrid

Network of private clinics, hospitals and specialized centers distributed throughout Spain.

**Related internship programs:**

- Advanced Operating Room Nursing
- Orthodontics and Dentofacial Orthopedics



Nursing

### Policlínico HM Las Tablas

Country	City
Spain	Madrid

Address: C. de la Sierra de Atapuerca, 5, 28050, Madrid

Network of private clinics, hospitals and specialized centers distributed throughout Spain.

**Related internship programs:**

- Trauma Nursing
- Diagnosis in Physiotherapy





Nursing

### Policlínico HM Moraleja

Country	City
Spain	Madrid

Address: P.º de Alcobendas, 10, 28109, Alcobendas, Madrid

Network of private clinics, hospitals and specialized centers distributed throughout Spain.

#### Related internship programs:

- Rehabilitation Medicine in Acquired Brain Injury Management



Nursing

### Policlínico HM Sanchinarro

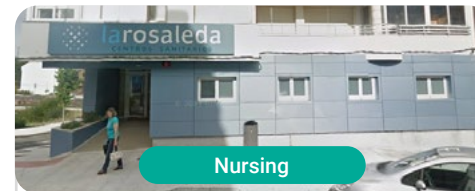
Country	City
Spain	Madrid

Address: Av. de Manoteras, 10, 28050, Madrid

Network of private clinics, hospitals and specialized centers distributed throughout Spain.

#### Related internship programs:

- Gynecological Care for Midwives
- Nursing in the Digestive Tract Department



Nursing

### Policlínico HM Rosaleda Lalín

Country	City
Spain	Pontevedra

Address: Av. Buenos Aires, 102, 36500, Lalín, Pontevedra

Network of private clinics, hospitals and specialized centers distributed throughout Spain.

#### Related internship programs:

- Advances in Hematology and Hemotherapy
- Neurological Physiotherapy



Nursing

### Policlínico HM Imi Toledo

Country	City
Spain	Toledo

Address: Av. de Irlanda, 21, 45005, Toledo

Network of private clinics, hospitals and specialized centers distributed throughout Spain.

#### Related internship programs:

- Electrotherapy in Rehabilitation Medicine
- Hair Transplantation

09

# Methodology

This academic program offers students a different way of learning. Our methodology uses a cyclical learning approach: **Relearning**.

This teaching system is used, for example, in the most prestigious medical schools in the world, and major publications such as the **New England Journal of Medicine** have considered it to be one of the most effective.





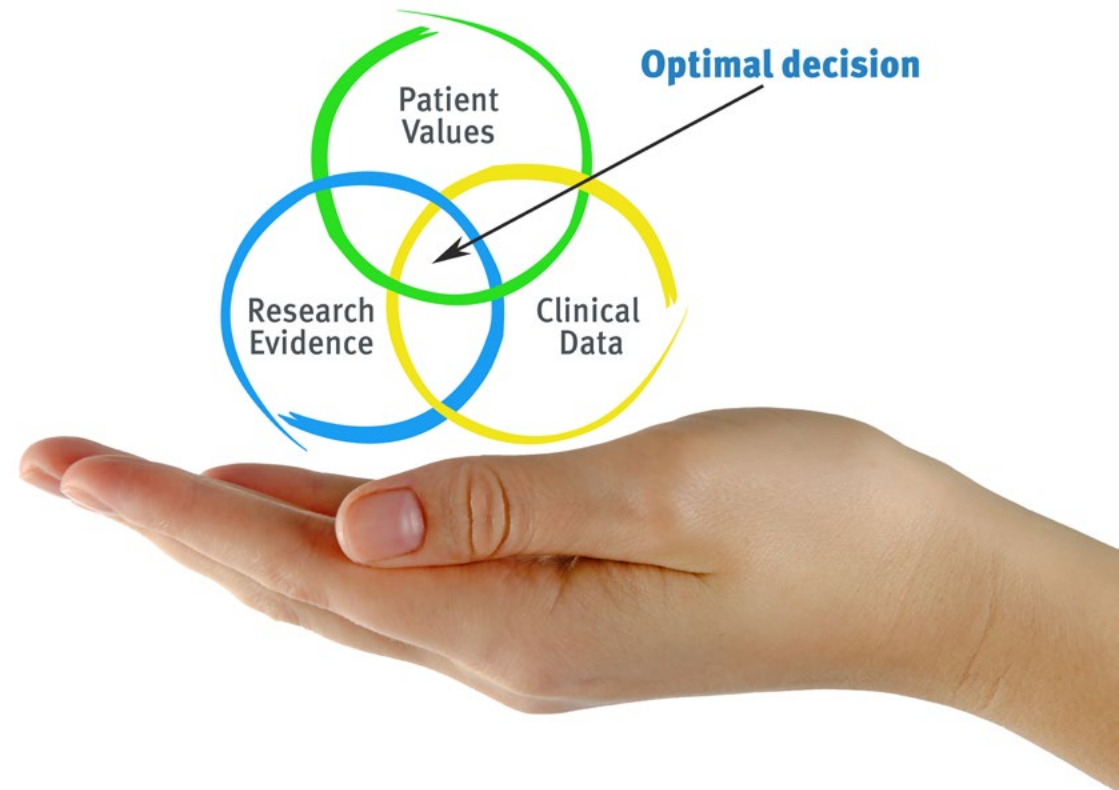
“

*Discover Relearning, a system that abandons conventional linear learning, to take you through cyclical teaching systems: a way of learning that has proven to be extremely effective, especially in subjects that require memorization"*

## At TECH Nursing School we use the Case Method

In a given situation, what should a professional do? Throughout the program, students will face multiple simulated clinical cases, based on real patients, in which they will have to do research, establish hypotheses, and ultimately resolve the situation. There is an abundance of scientific evidence on the effectiveness of the method. Nurses learn better, faster, and more sustainably over time.

*With TECH, nurses can experience a learning methodology that is shaking the foundations of traditional universities around the world.*



According to Dr. Gérvas, the clinical case is the annotated presentation of a patient, or group of patients, which becomes a "case", an example or model that illustrates some peculiar clinical component, either because of its teaching power or because of its uniqueness or rarity. It is essential that the case is based on current professional life, in an attempt to recreate the real conditions in professional nursing practice.

“

*Did you know that this method was developed in 1912, at Harvard, for law students? The case method consisted of presenting students with real-life, complex situations for them to make decisions and justify their decisions on how to solve them. In 1924, Harvard adopted it as a standard teaching method”*

The effectiveness of the method is justified by four fundamental achievements:

1. Nurses who follow this method not only grasp concepts, but also develop their mental capacity, by evaluating real situations and applying their knowledge.
2. The learning process has a clear focus on practical skills that allow the nursing professional to better integrate knowledge acquisition into the hospital setting or primary care.
3. Ideas and concepts are understood more efficiently, given that the example situations are based on real-life.
4. Students like to feel that the effort they put into their studies is worthwhile. This then translates into a greater interest in learning and more time dedicated to working on the course.



## Relearning Methodology

At TECH we enhance the case method with the best 100% online teaching methodology available: Relearning.

This university is the first in the world to combine case studies with a 100% online learning system based on repetition combining a minimum of 8 different elements in each lesson, which is a real revolution compared to the simple study and analysis of cases.



*The nurse will learn through real cases and by solving complex situations in simulated learning environments. These simulations are developed using state-of-the-art software to facilitate immersive learning.*

At the forefront of world teaching, the Relearning method has managed to improve the overall satisfaction levels of professionals who complete their studies, with respect to the quality indicators of the best online university (Columbia University).

With this methodology we have trained more than 175,000 nurses with unprecedented success in all specialities regardless of practical workload. Our pedagogical methodology is developed in a highly competitive environment, with a university student body with a strong socioeconomic profile and an average age of 43.5 years old.

*Relearning will allow you to learn with less effort and better performance, involving you more in your specialization, developing a critical mindset, defending arguments, and contrasting opinions: a direct equation to success.*

In our program, learning is not a linear process, but rather a spiral (learn, unlearn, forget, and re-learn). Therefore, we combine each of these elements concentrically.

The overall score obtained by TECH's learning system is 8.01, according to the highest international standards.



This program offers the best educational material, prepared with professionals in mind:



### Study Material

All teaching material is produced by the specialists who teach the course, specifically for the course, so that the teaching content is really specific and precise.

These contents are then applied to the audiovisual format, to create the TECH online working method. All this, with the latest techniques that offer high quality pieces in each and every one of the materials that are made available to the student.



### Nursing Techniques and Procedures on Video

We introduce you to the latest techniques, to the latest educational advances, to the forefront of current medical techniques. All of this in direct contact with students and explained in detail so as to aid their assimilation and understanding. And best of all, you can watch them as many times as you want.



### Interactive Summaries

The TECH team presents the contents attractively and dynamically in multimedia lessons that include audio, videos, images, diagrams, and concept maps in order to reinforce knowledge.

This exclusive educational system for presenting multimedia content was awarded by Microsoft as a "European Success Story".



### Additional Reading

Recent articles, consensus documents and international guidelines, among others. In TECH's virtual library, students will have access to everything they need to complete their course.





### Expert-Led Case Studies and Case Analysis

Effective learning ought to be contextual. Therefore, TECH presents real cases in which the expert will guide students, focusing on and solving the different situations: a clear and direct way to achieve the highest degree of understanding.



### Testing & Retesting

We periodically evaluate and re-evaluate students' knowledge throughout the program, through assessment and self-assessment activities and exercises, so that they can see how they are achieving their goals.



### Classes

There is scientific evidence suggesting that observing third-party experts can be useful.  
Learning from an Expert strengthens knowledge and memory, and generates confidence in future difficult decisions.



### Quick Action Guides

TECH offers the most relevant contents of the course in the form of worksheets or quick action guides. A synthetic, practical, and effective way to help students progress in their learning.



# 10 Certificate

The Hybrid Professional Master's Degree in Breastfeeding for Midwives guarantees students, in addition to the most rigorous and up-to-date education, access to a Professional Master's Degree diploma issued by TECH Technological University.





“

*Successfully complete this program and receive your university qualification without having to travel or fill out laborious paperwork”*

This **Hybrid Professional Master's Degree in Breastfeeding for Midwives** contains the most complete and up-to-date program on the professional and academic scene.

After the student has passed the assessments, they will receive their corresponding Hybrid Professional Master's Degree diploma issued by TECH Technological University via tracked delivery.

In addition to the certificate, students will be able to obtain an academic transcript, as well as a certificate outlining the contents of the program. In order to do so, students should contact their academic advisor, who will provide them with all the necessary information.

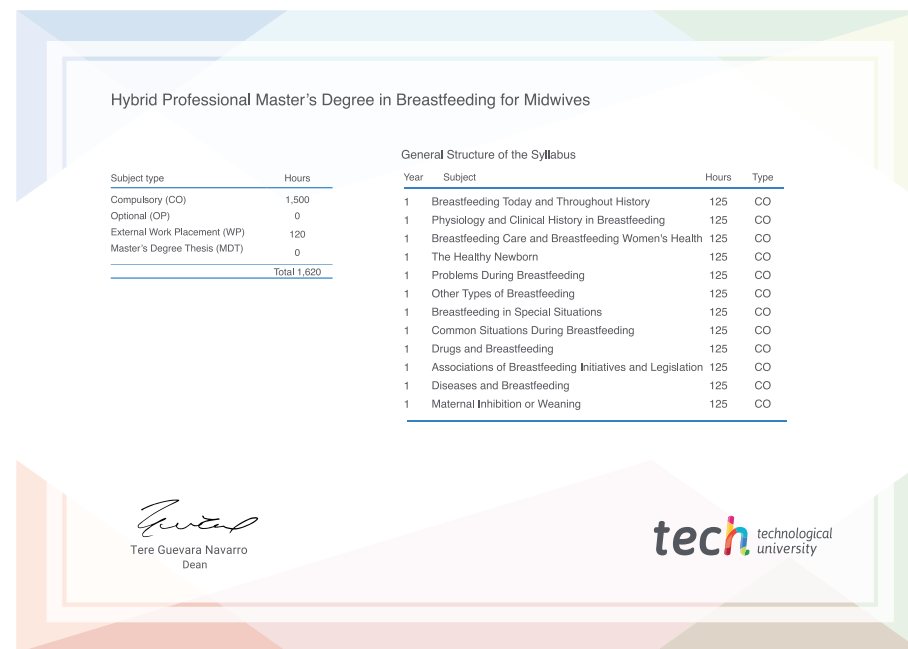
Title: **Hybrid Professional Master's Degree in Breastfeeding for Midwives**

Course Modality: **Hybrid (Online + Clinical Internship)**

Duration: **12 months**

Certificate: **TECH Technological University**

Teaching Hours: **1,620 h.**



\*Apostille Convention. In the event that the student wishes to have their paper certificate issued with an apostille, TECH EDUCATION will make the necessary arrangements to obtain it, at an additional cost.

future  
health confidence people  
education information tutors  
guarantee accreditation teaching  
institutions technology learning  
community commitment  
personalized service innovation  
knowledge present  
development languages  
virtual classroom



## Hybrid Professional Master's Degree

Breastfeeding  
for Midwives

Course Modality: Hybrid (Online + Clinical Internship)

Duration: 12 months

Program: TECH Technological University

Teaching Hours: 1,620 h.

# Hybrid Professional Master's Degree

## Breastfeeding for Midwives