

Professional Master's Degree

Autoimmune Diseases





Professional Master's Degree Autoimmune Diseases

- » Modality: online
- » Duration: 12 months
- » Certificate: TECH Global University
- » Credits: 60 ECTS
- » Schedule: at your own pace
- » Exams: online

Website: www.techtute.com/us/medicine/professional-master-degree/master-autoimmune-diseases

Index

01

Introduction

p. 4

02

Objectives

p. 8

03

Skills

p. 12

04

Course Management

p. 16

05

Structure and Content

p. 20

06

Methodology

p. 26

07

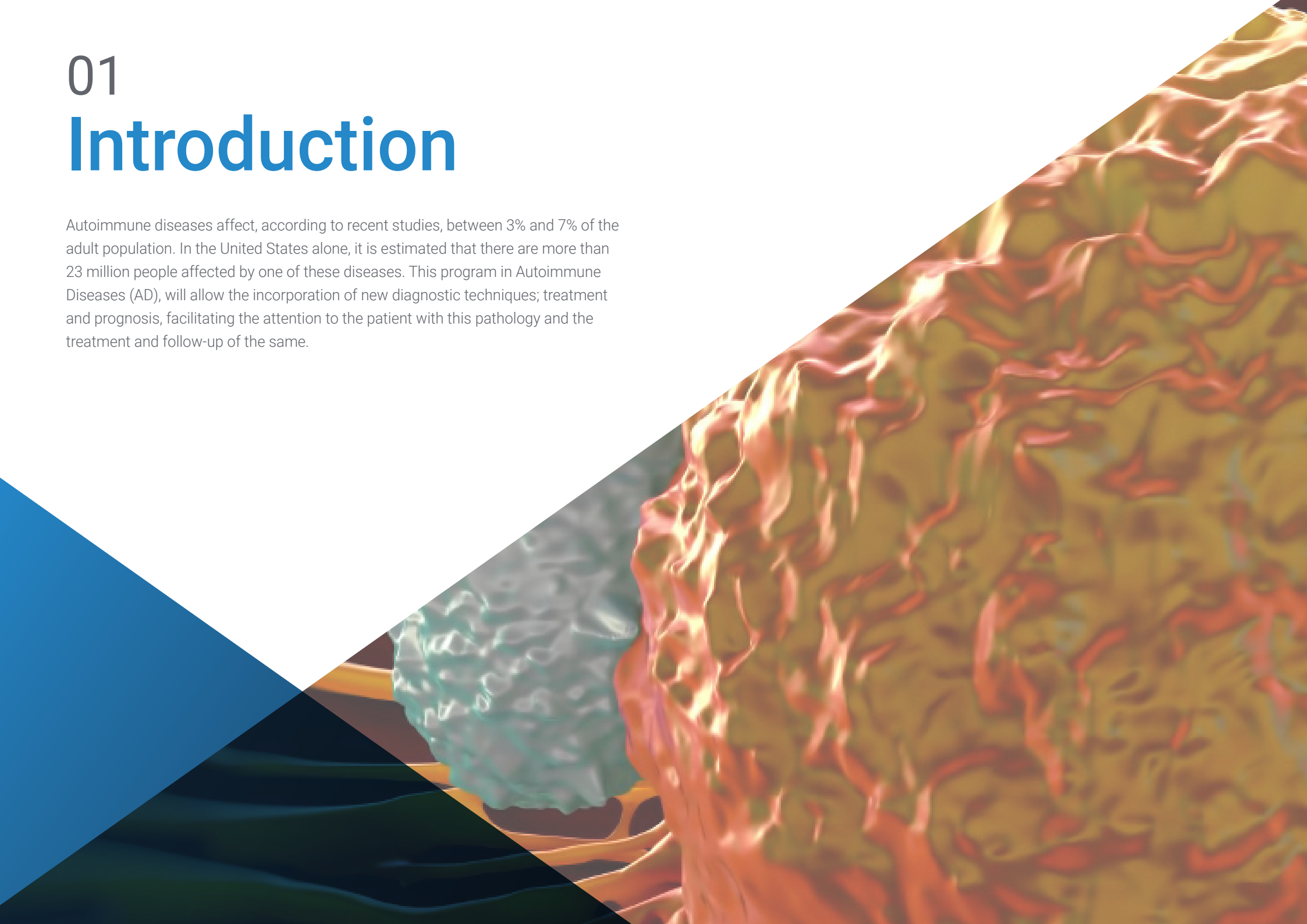
Certificate

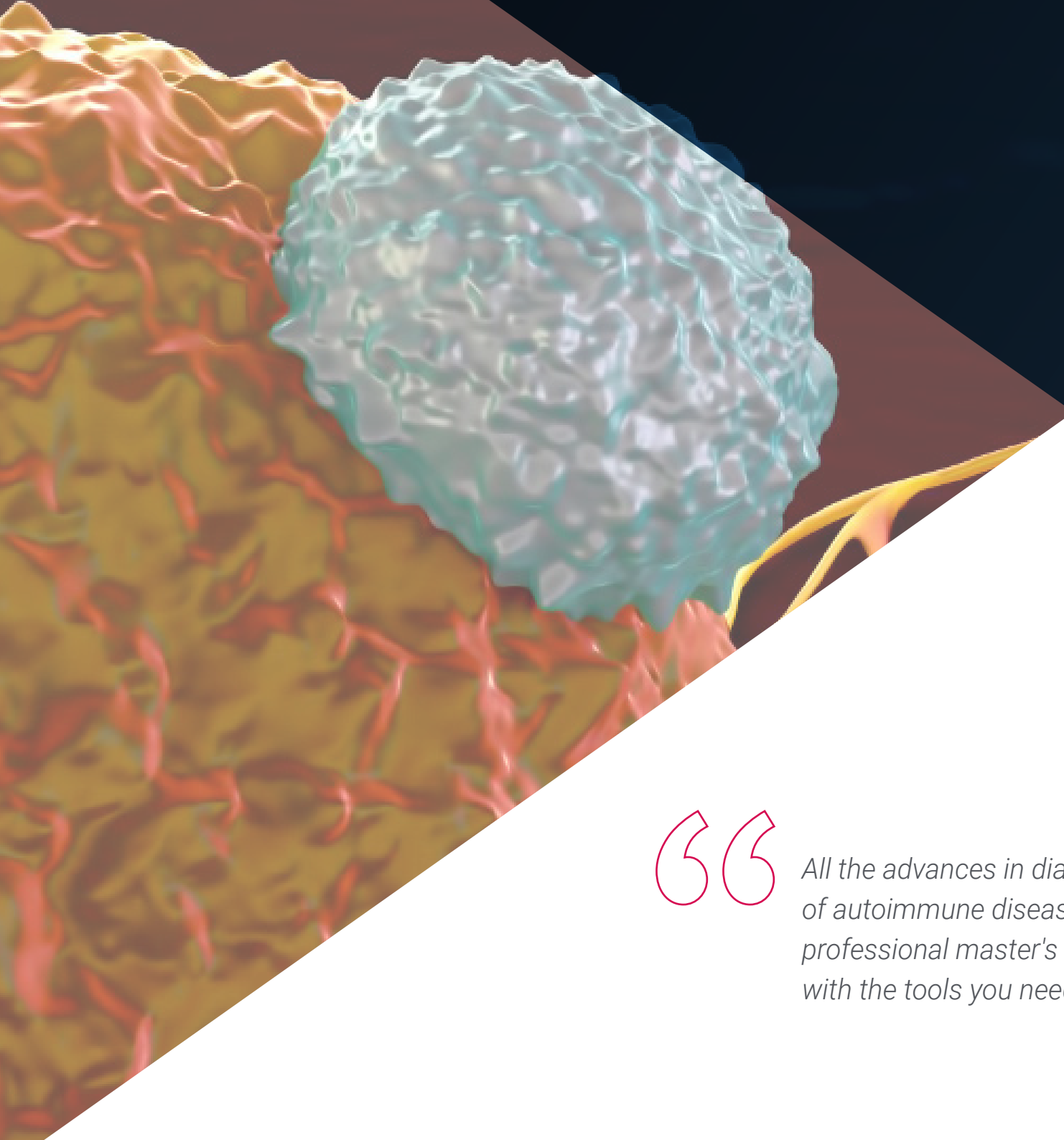
p. 34

01

Introduction

Autoimmune diseases affect, according to recent studies, between 3% and 7% of the adult population. In the United States alone, it is estimated that there are more than 23 million people affected by one of these diseases. This program in Autoimmune Diseases (AD), will allow the incorporation of new diagnostic techniques; treatment and prognosis, facilitating the attention to the patient with this pathology and the treatment and follow-up of the same.





“

All the advances in diagnosis, treatment, and prognosis of autoimmune diseases in an effective and realistic professional master's degree, designed to provide you with the tools you need in this exciting medical field”

In clinical practice, diagnosing, monitoring, and treating autoimmune diseases is not a straightforward task. The simultaneous or overlapping involvement of multiple organs and the presence of often vague or confusing symptoms require professionals to have a series of up-to-date and practical skills and knowledge that allow them to make quick and efficient decisions. Often, care in these cases involves dealing with long-term situations, in which the patient needs special personal, human and medical attention, both because of the absence of a diagnosis that provides an answer to their situation and because of the exhaustion inherent to long-term pathologies. During this complete Professional Master's Degree, the student will get the specialized and experienced vision that this type of diseases demands and needs. With solvency and seriousness that offers the teaching prestige of the largest online university in the world.

The content of this master's degree will cover, comprehensively and clearly, all aspects of the most relevant Systemic Autoimmune Diseases. Based on the study of Clinical Immunology as a basis for understanding the processes of development of autoimmune pathology, unraveling the different aspects of interest of this medical discipline. A specific and practical approach that will lead the medical professional to know in depth the different Autoimmune Diseases described so far, knowing and integrating their diagnostic and classificatory criteria in daily practice.

All these teacher developments are created with the objective of achieving educational efficiency for their students. An approach that focuses on offering the professional the possibility of making their learning compatible with their personal or professional life in a totally efficient way. A continuous Professional Master's Degree that includes highly specialized content, resulting from the latest trends and medical advances, such as its modules in Clinical Immunology, Multidisciplinary Assessment and Associated Pharmacology.

This objective of continuous education is also maintained after the course has been completed, thanks to the creation of an Online Learning Fund on Patients with Autoimmune Disease. A constantly up-to-date and revised resource to keep you informed of the latest developments in this field.

This **Professional Master's Degree in Autoimmune Diseases** contains the most complete and up-to-date scientific program on the market. Its most notable features are:

- The latest technology in online teaching software
- A highly visual teaching system, supported by graphic and schematic contents that are easy to assimilate and understand
- Practical cases presented by practising experts
- State-of-the-art interactive video systems
- Teaching supported by telepractice
- Continuous updating and recycling systems
- Autonomous learning: full compatibility with other occupations
- Practical exercises for self-evaluation and learning verification
- Support groups and educational synergies: questions to the expert, debate and knowledge forums
- Communication with the teacher and individual reflection work
- Content that is accessible from any fixed or portable device with an Internet connection
- Supplementary documentation databases are permanently available, even after the course



Discover a new way to keep your professional update in line with the medical vanguard with this highly demanding teaching program and the next step in your specialization"

“

Because of their particular nature, diagnosing systemic autoimmune diseases may be challenging for professionals. This Professional Master's Degree will provide professionals with the support of the most advanced medical processes, allowing them to make the quick decisions and interventions that clinical practice requires”

Our teaching staff is composed of medical professionals, practicing AD specialists. In this way, the intended objective of updating is ensured. A multidisciplinary team of doctors trained and experienced in different environments, who will develop the theoretical knowledge in an efficient way, but above all, they will put at the service of the course the practical knowledge derived from their own experience: one of the differential qualities of this Professional Master's Degree.

This mastery of the subject is complemented by the effectiveness of the methodology used in the design of this Master's Degree. Developed by a multidisciplinary team of E-Learning experts, it integrates the latest advances in educational technology. In this way, you will be able to study with a range of comfortable and versatile multimedia tools that will give you the operability you need in your education.

The design of this program is based on Problem-Based Learning: an approach that conceives learning as a highly practical process. To achieve this remotely, telepractice is used: with the help of an innovative system of interactive videos, you will be able to acquire knowledge as if you were facing the scenario you are learning at that moment. A concept that allows you to integrate learning in a more realistic and permanent way.

Our innovative telepractice concept will give you the opportunity to learn through an immersive experience, which will provide you with a faster integration and a much more realistic view of the contents.



02 Objectives

TECH Global University aims to prepare highly qualified professionals for the workplace. An objective that is also complemented, in a comprehensive manner, with the promotion of human development that lays the foundations for a better society. This objective, in this program in Autoimmune Diseases, is materialized in helping medical professionals to acquire knowledge that will keep them always updated in the latest techniques of approach, diagnosis and treatment of the AD. But also, by promoting integral patient care. A goal that, in just 12 months, can be achieved with a high-intensity and precision program.





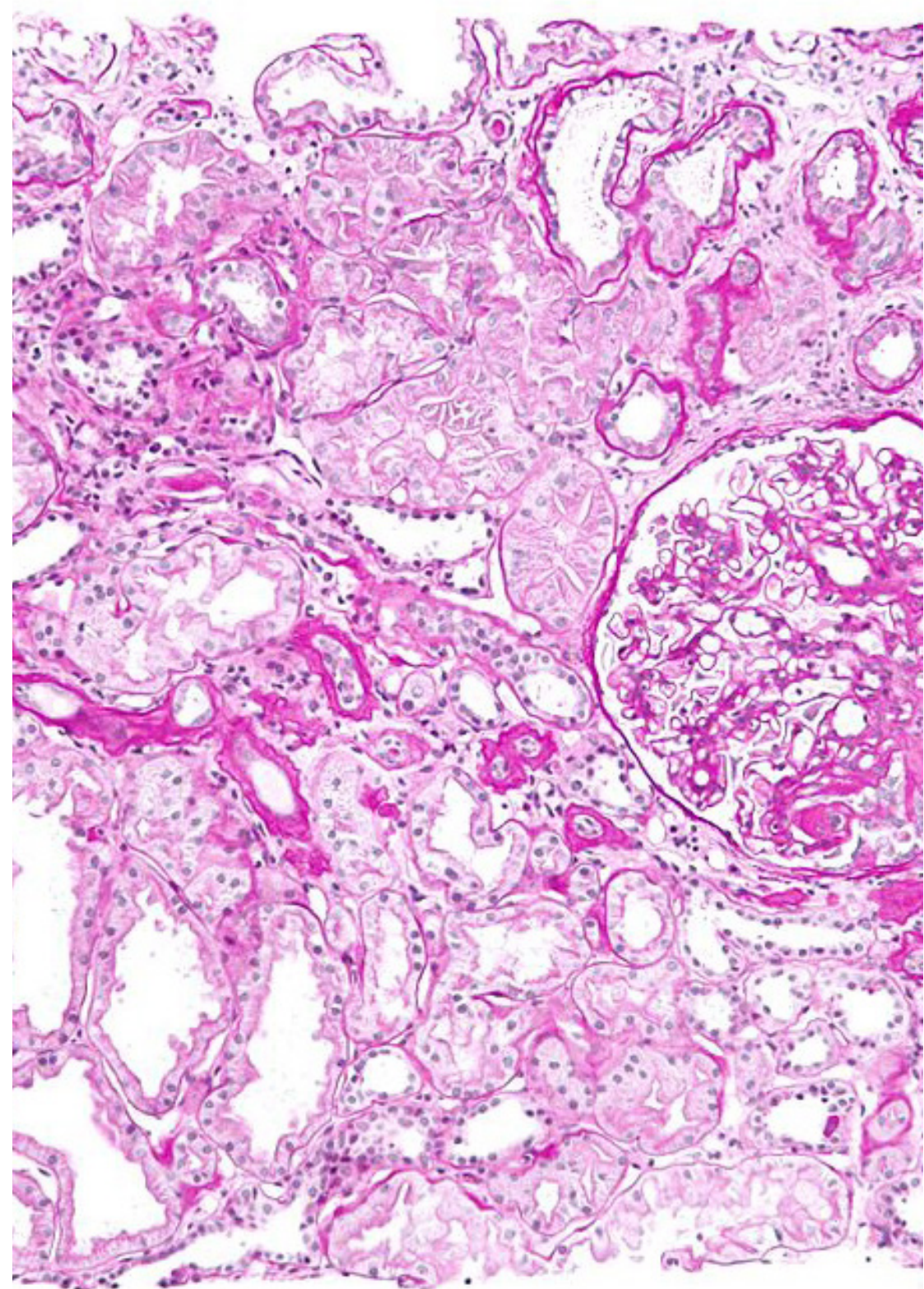
“

Our goal is yours: to provide you with the best online program and specialization in Autoimmune Diseases that is currently available on the market. A highly qualified step, from the hands of the best professionals in this specialty"



General objectives

- ♦ Identify the epidemiological, pathogenic, clinical, and therapeutic aspects of the main autoinflammatory diseases
- ♦ Acquire the skills required to provide up-to-date, scientific, and effective medical care for patients with ADs
- ♦ Create a constantly reviewed and up-to-date online learning resource on AD patients
- ♦ Facilitate the relationship between different services and professionals in our country and in Latin America that are dedicated, preferably, to comprehensive management of patients with ADs
- ♦ Acquire the knowledge required to recognize, interpret, and diagnose immune system alterations in the laboratory setting
- ♦ Learn how to prescribe and interpret complementary examinations applicable to the main autoinflammatory diseases





Specific objectives

Module 1. Clinical Immunology and Autoinflammatory Diseases

- ♦ Learn the ways to identify the epidemiological, pathogenic, clinical, and therapeutic aspects of the main autoinflammatory diseases
- ♦ Learn to determine the complementary examinations applicable to the main autoinflammatory diseases

Module 2. Systemic Lupus Erythematosus

- ♦ Understand all epidemiological, pathogenic, clinical, and therapeutic aspects of systemic lupus erythematosus
- ♦ Learn how to perform or schedule complementary examinations applicable to systemic lupus erythematosus

Module 3. Antiphospholipid Syndrome

- ♦ Understand all epidemiological, pathogenic, clinical, and therapeutic aspects of antiphospholipid syndrome
- ♦ Learn how to perform or to prescribe complementary examinations applicable in antiphospholipid syndrome

Module 4. Systemic Sclerosis

- ♦ Understand all epidemiological, pathogenic, clinical and therapeutic aspects of systemic sclerosis
- ♦ Learn how to perform or schedule complementary examinations applicable to systemic sclerosis

Module 5. Idiopathic Inflammatory Myopathy

- ♦ Understand all epidemiological, pathogenic, clinical, and therapeutic aspects of idiopathic inflammatory myopathy
- ♦ Learn how to perform or schedule complementary examinations applicable to idiopathic inflammatory myopathy

Module 6. Systemic Vasculitis

- ♦ Understand all epidemiological, pathogenic, clinical, and therapeutic aspects of systemic vasculitis
- ♦ Learn how to perform or schedule complementary examinations applicable to systemic vasculitis

Module 7. Primary Sjögren's Syndrome

- ♦ Understand all epidemiological, pathogenic, clinical, and therapeutic aspects of Primary Sjögren's Syndrome
- ♦ Learn how to perform or to prescribe complementary examinations applicable in Primary Sjögren's Syndrome

Module 8. Other Systemic Immune-Mediated Diseases

- ♦ Understand all epidemiological, pathogenic, clinical, and therapeutic aspects of other systemic immune-mediated diseases
- ♦ Learn how to perform or schedule complementary examinations applicable to these immune-mediated diseases

Module 9. Multidisciplinary Assessment of Patients with ADs

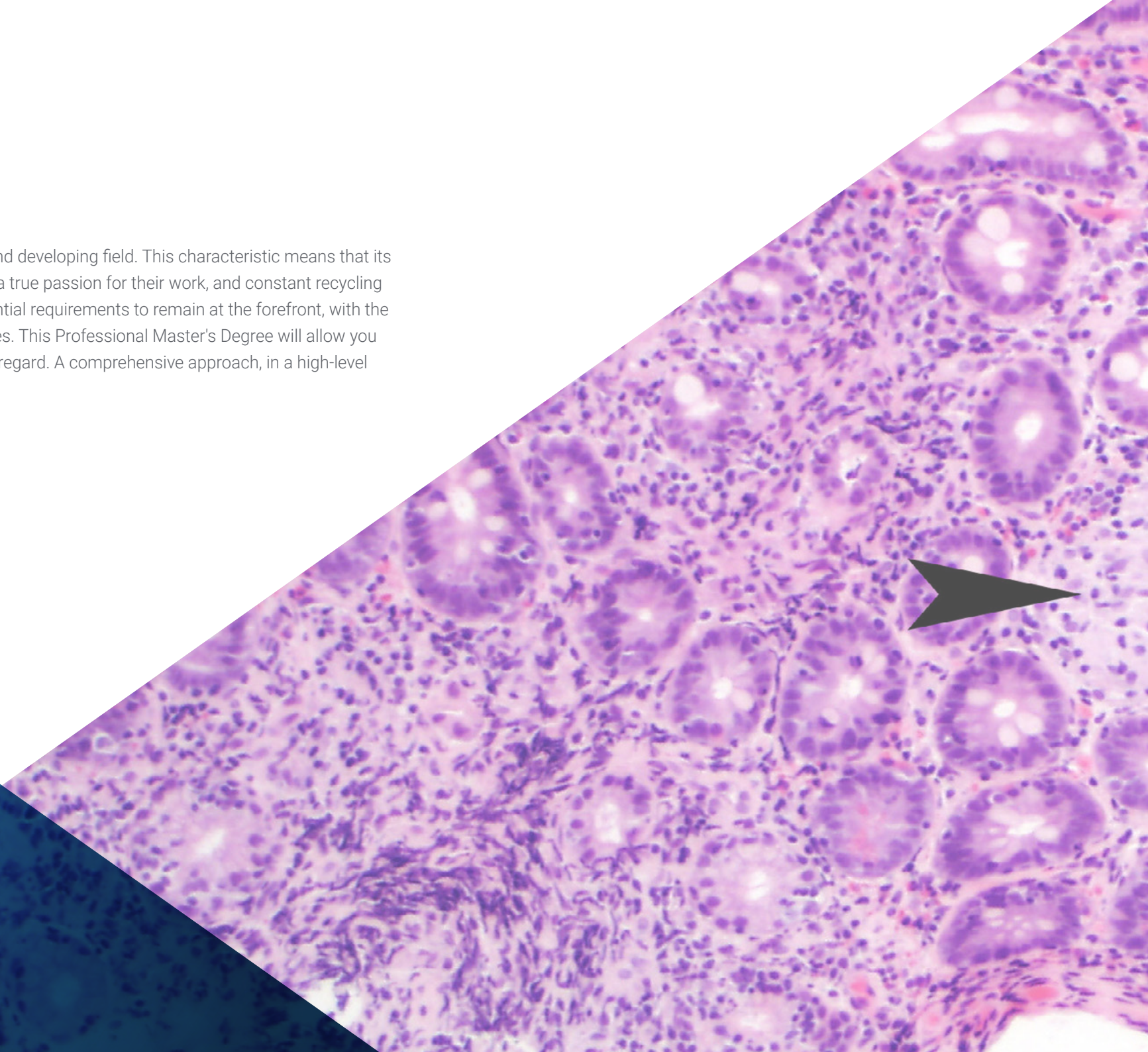
- ♦ Learn about the possibilities of multidisciplinary collaboration in the field of systemic autoimmune diseases

Module 10. Drugs in Systemic Autoimmune Diseases

- ♦ Learn the treatment options applicable to the management of systemic autoimmune diseases
- ♦ Identify the indications and contraindications of each of the drugs used
- ♦ Know the limitations of each one of them, as well as their correct treatment schedule

03 Skills

Medicine is a constantly evolving and developing field. This characteristic means that its professionals must be people with a true passion for their work, and constant recycling and updating are some of the essential requirements to remain at the forefront, with the quality that medical practice requires. This Professional Master's Degree will allow you to acquire the skills required in this regard. A comprehensive approach, in a high-level program that makes the difference.



A microscopic image showing glandular tissue, likely from the pancreas, stained with hematoxylin and eosin (H&E). The image displays numerous acini (glandular units) with prominent nuclei and cytoplasm, arranged in a lobular pattern. The background is a dark blue gradient.

“

Acquire the skills that will allow you to access a new way of approaching the comprehensive treatment of Autoimmune Diseases and start applying them in clinical practice, offering your patients the benefits of cutting-edge medicine in this field"



General Skills

- ♦ Be able to plan and execute collaborative relationships with other medical specialties
- ♦ Be able to work in multidisciplinary teams, collaborate with other researchers and, at the same time, act autonomously and with initiative
- ♦ Be able to transmit and disseminate knowledge in the social environment to audiences, both experts and non-experts, in a clear manner and in different languages
- ♦ Possess new knowledge and ways of dealing with complexity, and of making reflective judgments from limited information
- ♦ Be able to keep the knowledge acquired through various sources up to date
- ♦ Be able to apply and defend the bioethical and medico-legal principles of research and professional activities in the field of biomedicine





Specific Skills

- ♦ Be able to diagnose the most common ADs
- ♦ Be able to prescribe the necessary diagnostic interventions in order to determine the specific type of ailment and its progression
- ♦ Recognize and identify all clinical aspects of systemic lupus erythematosus in the patient in consultation
- ♦ Recognize and identify all clinical aspects of antiphospholipid syndrome in the patient in consultation
- ♦ Recognize and identify all clinical aspects of systemic sclerosis in the patient in consultation
- ♦ Recognize and identify all clinical aspects of idiopathic inflammatory myopathy in the patient in consultation
- ♦ Recognize and identify all clinical aspects of systemic vasculitis in the patient in consultation
- ♦ Recognize and identify all clinical aspects of primary Sjögren syndrome in the patient in consultation
- ♦ Recognize and identify all clinical aspects of other autoimmune diseases
- ♦ Know and determine the diagnostic protocol in lupus erythematosus
- ♦ Be able to correctly interpret diagnostic tests for all ADs in the laboratory setting
- ♦ Learn about the possibilities of multidisciplinary collaboration in the field of AD
- ♦ Be able to develop treatment indications in each of the ADs
- ♦ Identify the indications and contraindications of usable drugs
- ♦ Assess pharmacological limitations
- ♦ Be able to create an adequate treatment plan



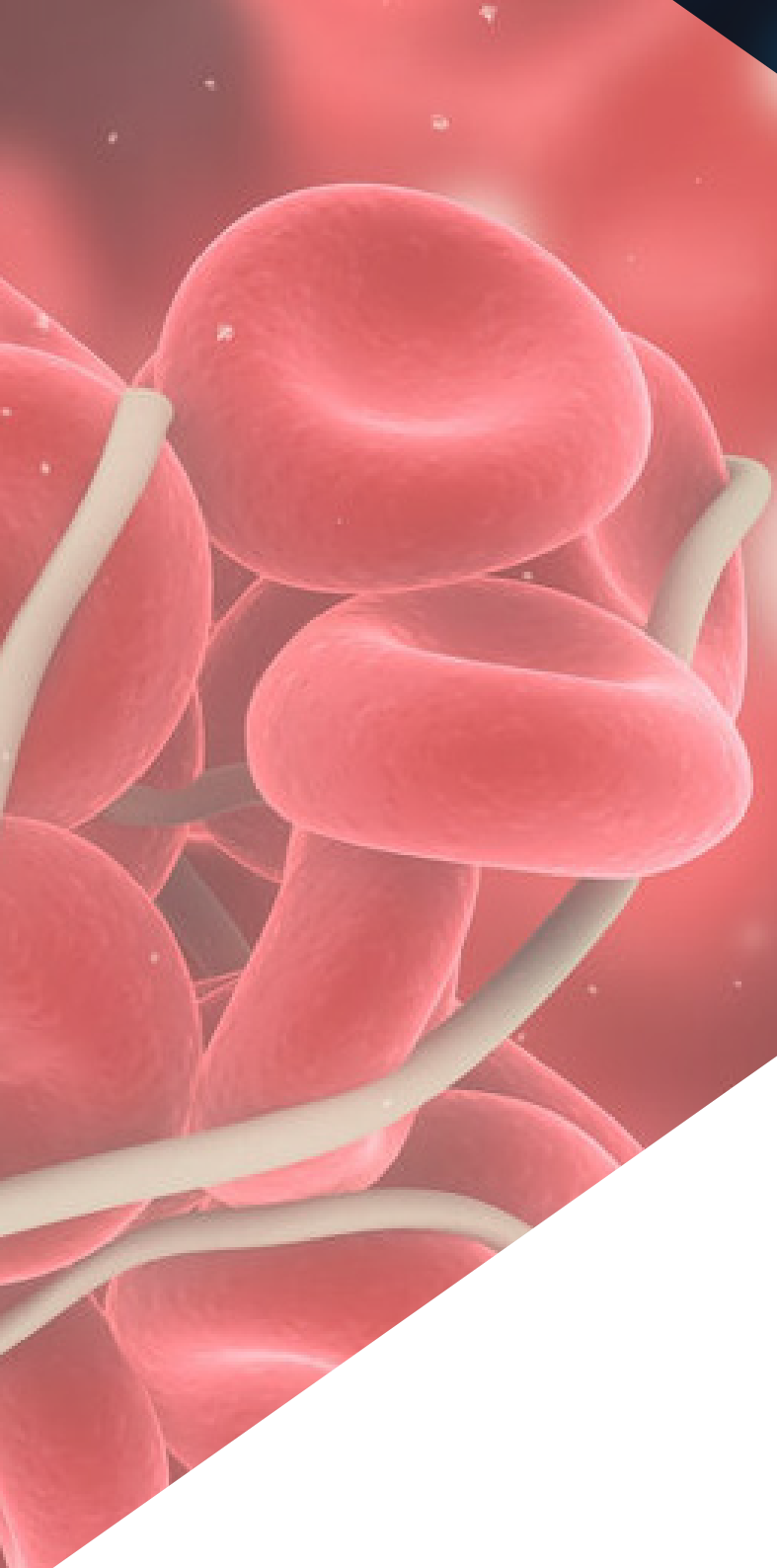
A unique, key and decisive program to boost your professional development”

04

Course Management

Within the concept of total quality of this program, TECH is proud to make available to the student a teaching staff of the highest level, chosen for their proven experience in the field of Autoimmune Diseases. A multidisciplinary team, made up of professionals who will contribute their vision and experience to this comprehensive course. A unique opportunity to learn from the best.





“

An impressive teaching staff, made up of professional experts in the field of Autoimmune Diseases, will be in charge of bringing their experience to your training: a unique opportunity not to be missed”

Management



Dr. Araújo Loperena, Olga

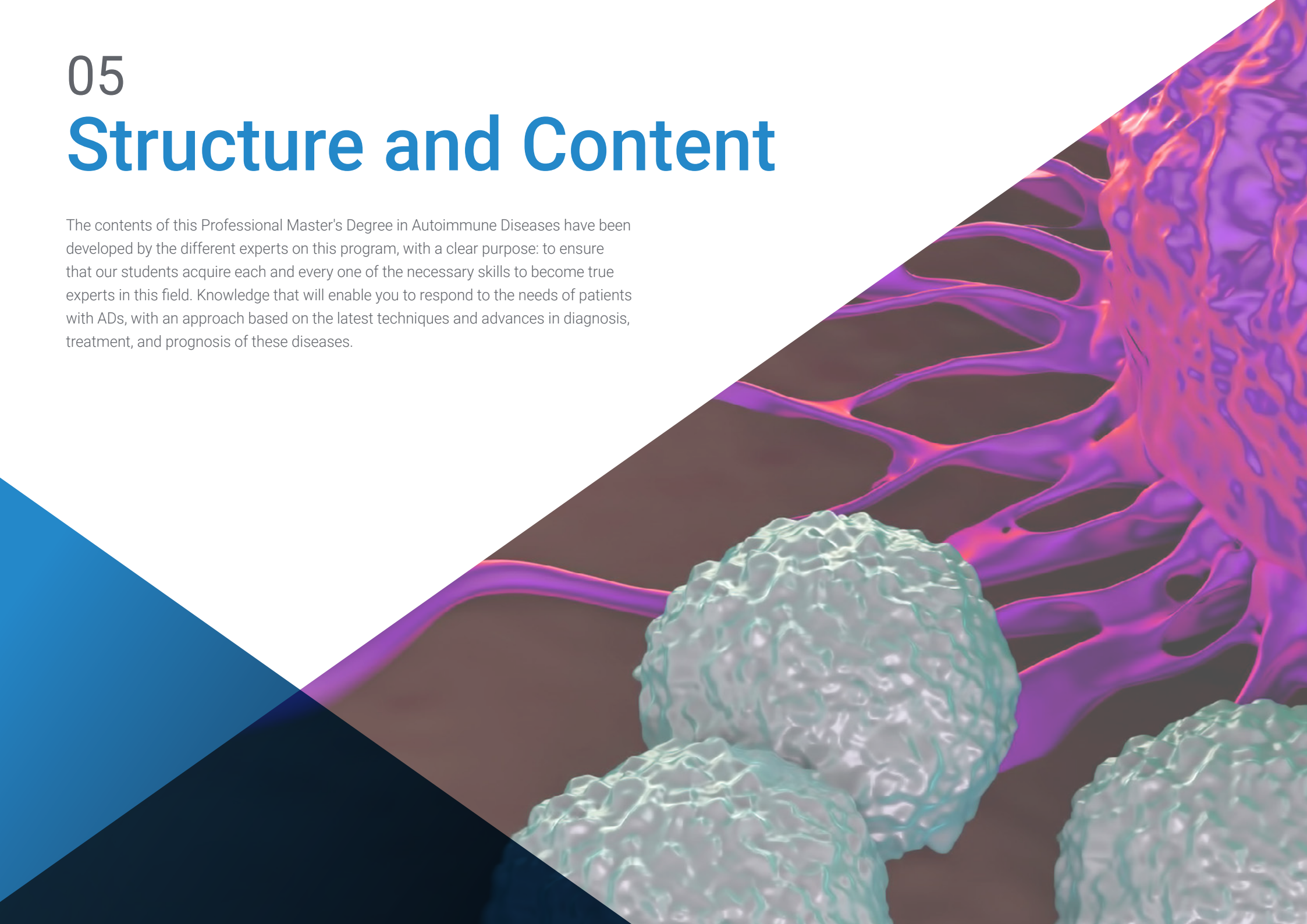
- ◆ Specialist in Internal Medicine
- ◆ Autoimmune Disease Consultation
- ◆ Head of Specialized Health Training Studies
- ◆ Master's Degree in Clinical Management of Patients with Systemic and Autoimmune Diseases. University of Barcelona
- ◆ Master's Degree in Advanced Medical Skills, specializing in Autoimmune Diseases. University of Barcelona
- ◆ Sant Pau i Santa Tecla Hospital Xarxa Sanitària i Social Santa Tecla. Tarragona



05

Structure and Content

The contents of this Professional Master's Degree in Autoimmune Diseases have been developed by the different experts on this program, with a clear purpose: to ensure that our students acquire each and every one of the necessary skills to become true experts in this field. Knowledge that will enable you to respond to the needs of patients with ADs, with an approach based on the latest techniques and advances in diagnosis, treatment, and prognosis of these diseases.



“

A comprehensive teaching program, structured in well-developed teaching units, oriented towards learning that is compatible with your personal and professional life"

Module 1. Clinical Immunology and Autoinflammatory Diseases

- 1.1. The Innate and Adaptive Immune Response
- 1.2. From Autoimmune Response to Systemic Autoimmune Disease
- 1.3. Types of Autoimmune Response
- 1.4. HLA Polymorphism
- 1.5. Autoantibodies in Autoimmune Disease Diagnosis
- 1.6. Autoinflammatory Diseases I: IL-1-Mediated Diseases
- 1.7. Autoinflammatory Diseases II: Autoinflammation and Autoimmunity. Interferonopathies
- 1.8. Autoinflammatory Diseases III: Autoinflammation and Immunodeficiency
- 1.9. Autoinflammatory Diseases IV: Ubiquitinopathies and Other Autoinflammatory Diseases
- 1.10. Immunomodulatory Therapies

Module 2. Systemic Lupus Erythematosus

- 2.1. Epidemiology
- 2.2. Clinical Manifestations
- 2.3. Diagnostic Criteria Classification Criteria
- 2.4. Lupus Nephritis
- 2.5. Neurolupus
- 2.6. Monitoring Patients with Lupus
- 2.7. Lupus Treatment I: Conventional Therapy
- 2.8. Lupus Treatment II: Immunosuppressive Therapy
- 2.9. Lupus Treatment III: Treatment according to the Organ Affected
- 2.10. Pregnancy and Lupus

Module 3. Antiphospholipid Syndrome

- 3.1. Antiphospholipid Antibodies
- 3.2. Clinical Manifestations of Antiphospholipid Syndrome
- 3.3. Catastrophic Antiphospholipid Syndrome
- 3.4. Seronegative Antiphospholipid Syndrome
- 3.5. Obstetric Antiphospholipid Syndrome
- 3.6. Cardiac Involvement in Antiphospholipid Syndrome
- 3.7. Monitoring Patients with Antiphospholipid Syndrome
- 3.8. Treating Antiphospholipid Syndrome
- 3.9. Treating Antiphospholipid Syndrome in Special Clinical Situations

Module 4. Systemic Sclerosis (SSc)

- 4.1. Epidemiology
- 4.2. Clinical Manifestations
- 4.3. Diagnostic Criteria. Classification Criteria
- 4.4. Renal Involvement in Systemic Sclerosis
- 4.5. Pulmonary Involvement in Systemic Sclerosis
- 4.6. Monitoring Patients with Systemic Sclerosis
- 4.7. SSc Treatment I: Conventional Therapy
- 4.8. SSc Treatment II: Immunosuppressive Therapy
- 4.9. SSc Treatment III: Treatment According to the Affected Organ
- 4.10. Treating Pulmonary Hypertension in Patients with Systemic Sclerosis



Module 5. Idiopathic Inflammatory Myopathy (IIM)

- 5.1. Epidemiology
- 5.2. Clinical Manifestations
- 5.3. Diagnostic Criteria. Classification Criteria
- 5.4. Differential Diagnosis of Idiopathic Inflammatory Myopathy
- 5.5. Pulmonary Involvement in Idiopathic Inflammatory Myopathy
- 5.6. Monitoring Patients with Idiopathic Inflammatory Myopathy
- 5.7. IIM Treatment - I: Conventional Therapy
- 5.8. IIM Treatment - II: Immunosuppressive Therapy
- 5.9. Inclusion Body Myositis
- 5.10. Myositis and Cancer

Module 6. Systemic Vasculitis

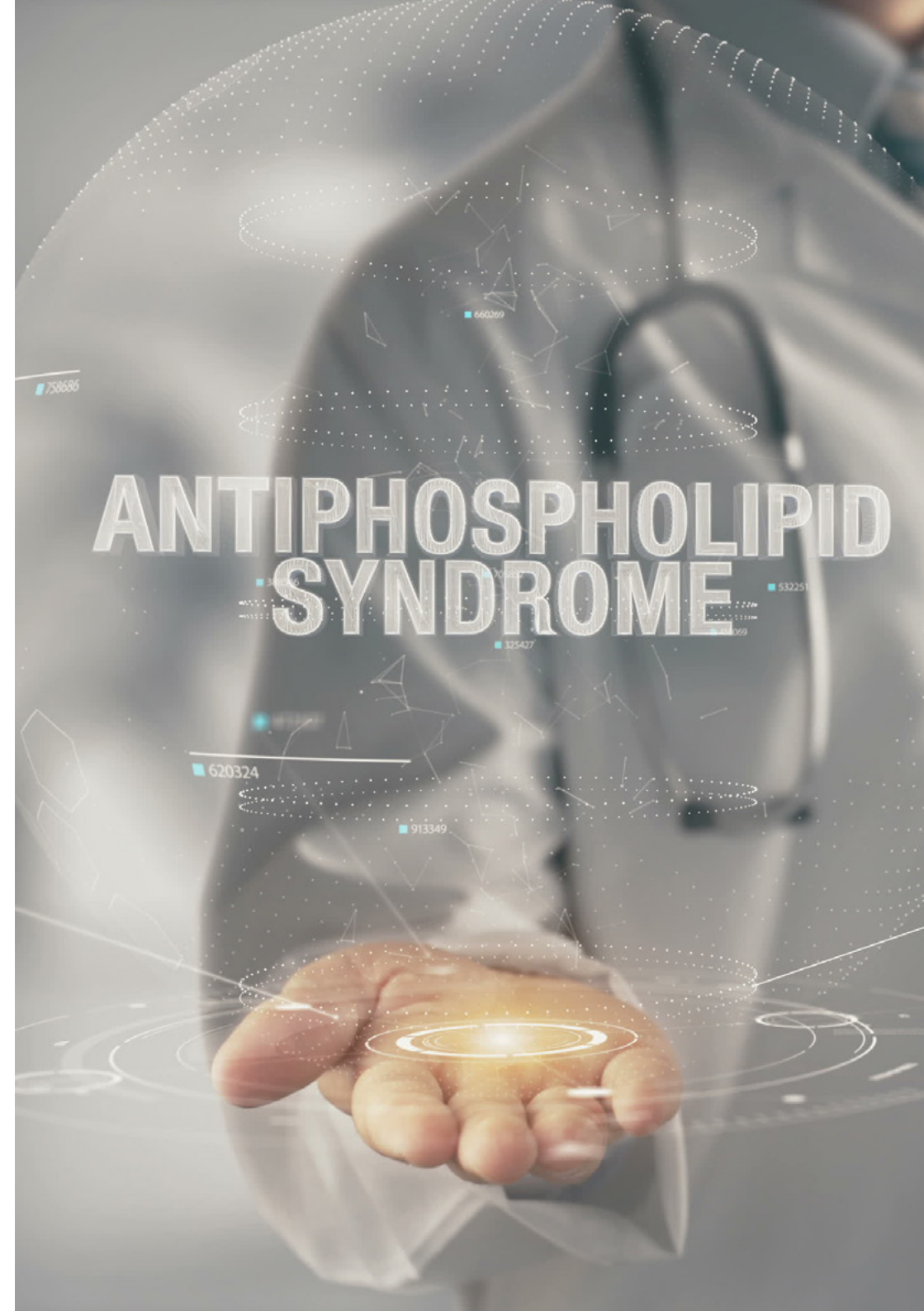
- 6.1. Epidemiology
- 6.2. Diagnostic Criteria. Classification Criteria
- 6.3. Monitoring Patients with Systemic Vasculitis
- 6.4. Giant Cell Arteritis and Polymyalgia Rheumatica
- 6.5. Takayasu's Arteritis
- 6.6. Polyarteritis Nodosa and Kawasaki Disease
- 6.7. ANCA-Associated Vasculitis: Granulomatosis with Polyangiitis (GPA) and Microscopic Polyangiitis (MPA)
- 6.8. ANCA-Associated Vasculitis: Eosinophilic Granulomatosis with Polyangiitis (EGPA)
- 6.9. Immune Complex Vasculitis. Cryoglobulinemic Vasculitis
- 6.10. CNS Vasculitis and Other Localized Vasculitis

Module 7. Primary Sjögren's Syndrome

- 7.1. Epidemiology
- 7.2. Clinical Manifestations
- 7.3. Diagnostic Criteria Classification Criteria
- 7.4. Minor Salivary Gland Biopsy and Other Complementary Tests
- 7.5. Extra-glandular Involvement in Primary Sjögren's Syndrome
- 7.6. Monitoring Patients with Primary Sjögren's Syndrome
- 7.7. Differential Diagnosis of Primary Sjögren's Syndrome
- 7.8. PSS Treatment I: Dryness Therapy
- 7.9. PSS Treatment II: Extra-glandular Manifestations Treatment
- 7.10. Primary Sjögren's Syndrome Prognosis

Module 8. Other Systemic Immune-Mediated Diseases

- 8.1. Relapsing Polychondritis
- 8.2. Sarcoidosis
- 8.3. Extrapulmonary Sarcoidosis
- 8.4. Hemophagocytic Syndrome
- 8.5. IgG4-Related Autoimmune Disease
- 8.6. Variable Vessel vasculitis: Behcet's Disease I
- 8.7. Variable Vessel Vasculitis: Behcet's Disease II
- 8.8. Rheumatoid Arthritis
- 8.9. Other Autoimmune Diseases of the Musculoskeletal System
- 8.10. Adult Still's Disease



Module 9. Multidisciplinary Assessment of Patients with ADs

- 9.1. Cardiovascular Risk Factors in Patients with ADs
- 9.2. Fever in Patients with ADs and Immunosuppressive Treatment
- 9.3. Pregnancy in Patients with ADs
- 9.4. Anti-Inflammatory, Immunosuppressive and Antithrombotic Treatment in Pregnancy
- 9.5. Emergencies in Patients with ADs
- 9.6. Vaccination in Patients with ADs
- 9.7. Non-Infectious Uveitis
- 9.8. Pulmonary Arterial Hypertension in ADs
- 9.9. The Use of Capillaroscopy in Patients with ADs
- 9.10. Renal Biopsy in ADs

Module 10. Drugs in Systemic Autoimmune Diseases

- 10.1. Nonsteroidal Anti-Inflammatory Drugs
- 10.2. Antimalarials
- 10.3. Glucocorticoids
- 10.4. Immunosuppressants
- 10.5. Immunoglobulins
- 10.6. Vasodilators
- 10.7. Anticoagulants
- 10.8. Biological Treatments Targeting B-Lymphocytes
- 10.9. Biological Treatments Targeting TNF- α
- 10.10. Other Biological Treatments

“

*Take the step to get up to date
on the latest developments in
Autoimmune Diseases”*

550624

06

Methodology

This academic program offers students a different way of learning. Our methodology uses a cyclical learning approach: **Relearning**.

This teaching system is used, for example, in the most prestigious medical schools in the world, and major publications such as the **New England Journal of Medicine** have considered it to be one of the most effective.



“

Discover Relearning, a system that abandons conventional linear learning, to take you through cyclical teaching systems: a way of learning that has proven to be extremely effective, especially in subjects that require memorization"

At TECH we use the Case Method

What should a professional do in a given situation? Throughout the program, students will face multiple simulated clinical cases, based on real patients, in which they will have to do research, establish hypotheses, and ultimately resolve the situation. There is an abundance of scientific evidence on the effectiveness of the method. Specialists learn better, faster, and more sustainably over time.

With TECH you will experience a way of learning that is shaking the foundations of traditional universities around the world.



According to Dr. Gérvas, the clinical case is the annotated presentation of a patient, or group of patients, which becomes a "case", an example or model that illustrates some peculiar clinical component, either because of its teaching power or because of its uniqueness or rarity. It is essential that the case is based on current professional life, trying to recreate the real conditions in the physician's professional practice.

“

Did you know that this method was developed in 1912, at Harvard, for law students? The case method consisted of presenting students with real-life, complex situations for them to make decisions and justify their decisions on how to solve them. In 1924, Harvard adopted it as a standard teaching method”

The effectiveness of the method is justified by four fundamental achievements:

1. Students who follow this method not only achieve the assimilation of concepts, but also a development of their mental capacity, through exercises that evaluate real situations and the application of knowledge.
2. Learning is solidly translated into practical skills that allow the student to better integrate into the real world.
3. Ideas and concepts are understood more efficiently, given that the example situations are based on real-life.
4. Students like to feel that the effort they put into their studies is worthwhile. This then translates into a greater interest in learning and more time dedicated to working on the course.



Relearning Methodology

At TECH we enhance the case method with the best 100% online teaching methodology available: Relearning.

This university is the first in the world to combine the study of clinical cases with a 100% online learning system based on repetition, combining a minimum of 8 different elements in each lesson, a real revolution with respect to the mere study and analysis of cases.

Professionals will learn through real cases and by resolving complex situations in simulated learning environments. These simulations are developed using state-of-the-art software to facilitate immersive learning.



At the forefront of world teaching, the Relearning method has managed to improve the overall satisfaction levels of professionals who complete their studies, with respect to the quality indicators of the best online university (Columbia University).

With this methodology, more than 250,000 physicians have been trained with unprecedented success in all clinical specialties regardless of surgical load. Our pedagogical methodology is developed in a highly competitive environment, with a university student body with a strong socioeconomic profile and an average age of 43.5 years old.

Relearning will allow you to learn with less effort and better performance, involving you more in your specialization, developing a critical mindset, defending arguments, and contrasting opinions: a direct equation to success.

In our program, learning is not a linear process, but rather a spiral (learn, unlearn, forget, and relearn). Therefore, we combine each of these elements concentrically.

The overall score obtained by TECH's learning system is 8.01, according to the highest international standards.



This program offers the best educational material, prepared with professionals in mind:



Study Material

All teaching material is produced by the specialists who teach the course, specifically for the course, so that the teaching content is highly specific and precise.

These contents are then applied to the audiovisual format, to create the TECH online working method. All this, with the latest techniques that offer high quality pieces in each and every one of the materials that are made available to the student.



Surgical Techniques and Procedures on Video

TECH introduces students to the latest techniques, the latest educational advances and to the forefront of current medical techniques. All of this in direct contact with students and explained in detail so as to aid their assimilation and understanding. And best of all, you can watch the videos as many times as you like.



Interactive Summaries

The TECH team presents the contents attractively and dynamically in multimedia lessons that include audio, videos, images, diagrams, and concept maps in order to reinforce knowledge.

This exclusive educational system for presenting multimedia content was awarded by Microsoft as a "European Success Story".



Additional Reading

Recent articles, consensus documents and international guidelines, among others. In TECH's virtual library, students will have access to everything they need to complete their course.





Expert-Led Case Studies and Case Analysis

Effective learning ought to be contextual. Therefore, TECH presents real cases in which the expert will guide students, focusing on and solving the different situations: a clear and direct way to achieve the highest degree of understanding.



Testing & Retesting

We periodically evaluate and re-evaluate students' knowledge throughout the program, through assessment and self-assessment activities and exercises, so that they can see how they are achieving their goals.



Classes

There is scientific evidence on the usefulness of learning by observing experts. The system known as Learning from an Expert strengthens knowledge and memory, and generates confidence in future difficult decisions.



Quick Action Guides

TECH offers the most relevant contents of the course in the form of worksheets or quick action guides. A synthetic, practical, and effective way to help students progress in their learning.



07

Certificate

This Professional Master's Degree in Autoimmune Diseases guarantees you, in addition to the most rigorous and updated training, access to a Professional Master's Degree issued by TECH Global University.



“

*Successfully complete this program
and receive your university degree
without travel or laborious paperwork”*

This private qualification will allow you to obtain a **Professional Master's Degree diploma in Autoimmune Diseases** endorsed by **TECH Global University**, the world's largest online university.

TECH Global University is an official European University publicly recognized by the Government of Andorra (**official bulletin**). Andorra is part of the European Higher Education Area (EHEA) since 2003. The EHEA is an initiative promoted by the European Union that aims to organize the international training framework and harmonize the higher education systems of the member countries of this space. The project promotes common values, the implementation of collaborative tools and strengthening its quality assurance mechanisms to enhance collaboration and mobility among students, researchers and academics.

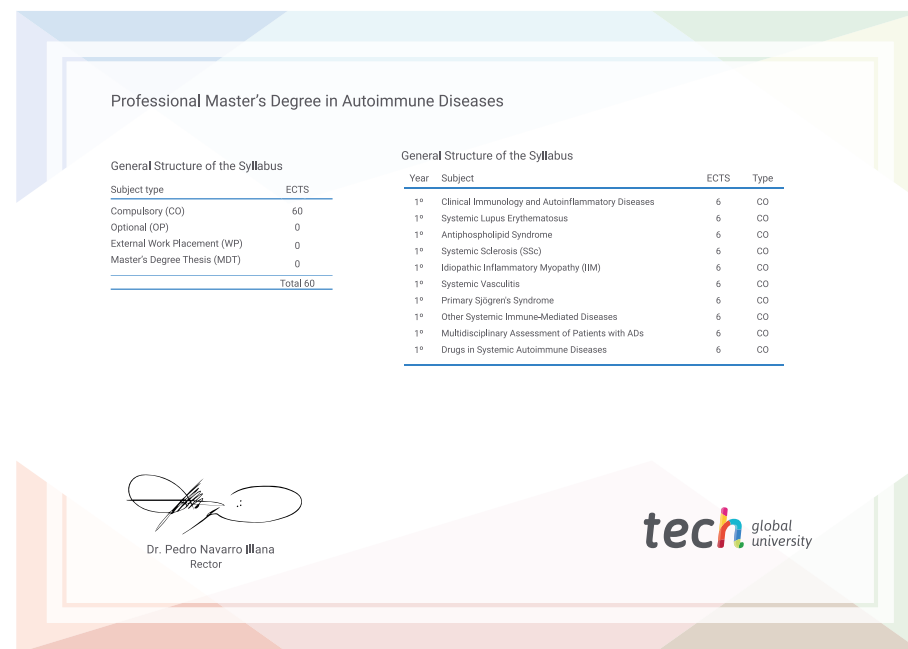
This **TECH Global University** private qualification is a European program of continuing education and professional updating that guarantees the acquisition of competencies in its area of knowledge, providing a high curricular value to the student who completes the program.

Title: **Professional Master's Degree in Autoimmune Diseases**

Modality: **online**

Duration: **12 months**

Accreditation: **60 ECTS**



*Apostille Convention. In the event that the student wishes to have their paper diploma issued with an apostille, TECH Global University will make the necessary arrangements to obtain it, at an additional cost.

future

health confidence people

education information tutors

guarantee accreditation teaching

institutions technology learning

community commitment

personalized service innovation

knowledge present quality

online training

development language

virtual classroom

tech global
university

Professional Master's Degree

Autoimmune Diseases

- » Modality: online
- » Duration: 12 months
- » Certificate: TECH Global University
- » Credits: 60 ECTS
- » Schedule: at your own pace
- » Exams: online

Professional Master's Degree

Autoimmune Diseases

