

Postgraduate Diploma Neuroendocrine Tumors





Postgraduate Diploma Neuroendocrine Tumors

- » Modality: online
- » Duration: 6 months
- » Certificate: TECH Global University
- » Credits: 18 ECTS
- » Schedule: at your own pace
- » Exams: online

Website: www.techtute.com/us/medicine/postgraduate-diploma/postgraduate-diploma-neuroendocrine-tumors

Index

01

Introduction

p. 4

02

Objectives

p. 8

03

Course Management

p. 12

04

Structure and Content

p. 20

05

Methodology

p. 24

06

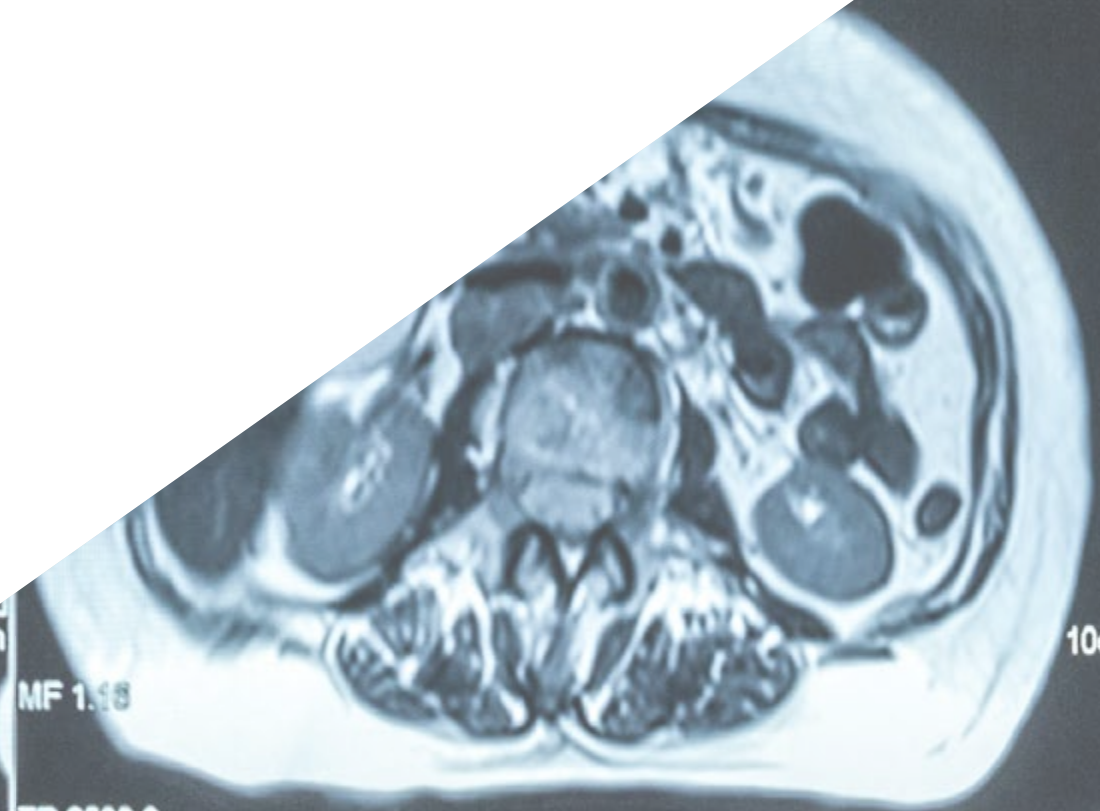
Certificate

p. 32

01

Introduction

Despite being rare, Neuroendocrine Tumors present slow growth and long survival, so they require physicians to do an extensive monitoring at all stages to provide the best possible care. Since the evolution of each tumor is different depending on the patient, health professionals must have extensive knowledge of how to approach each one of them. For this reason, TECH has developed a complete program for students to learn the diagnosis, monitoring and subsequent surgical or chemotherapy treatment applicable to each patient. Thanks to this program, elaborated based on the latest discoveries in Endocrine Oncology, students will have a decisive advantage to improve their Professional Station.



10cm
MF 1.18
D/E TR 2580.0
TP F14 TE 107.0
SP F33.4 TA 05.41*3
SL 7.0 BW 260.0
FoV 231*360 p2 M/NORM/DIS2D/FM/FIL
246*512 I
Tra>Sag(0.4)>Cor(-0.0) A1/SAT2
W 862 T:BO1,2;SP2-4
C 347 *tse2d1_29 / 150

10cm
D/E TR 2580.0
TP F14 TE 107.0
SP F41. TA 05.41*3
SL 7.0 BW 260.0
FoV 231*360 p2 M/NORM/DIS2D/FM/FIL
246*512 I
Tra>Sag(0.4)>Cor(-0.0) A1/SAT2
W 862 T:BO1,2;SP2-4
C 347 *tse2d1_29 / 150

AH

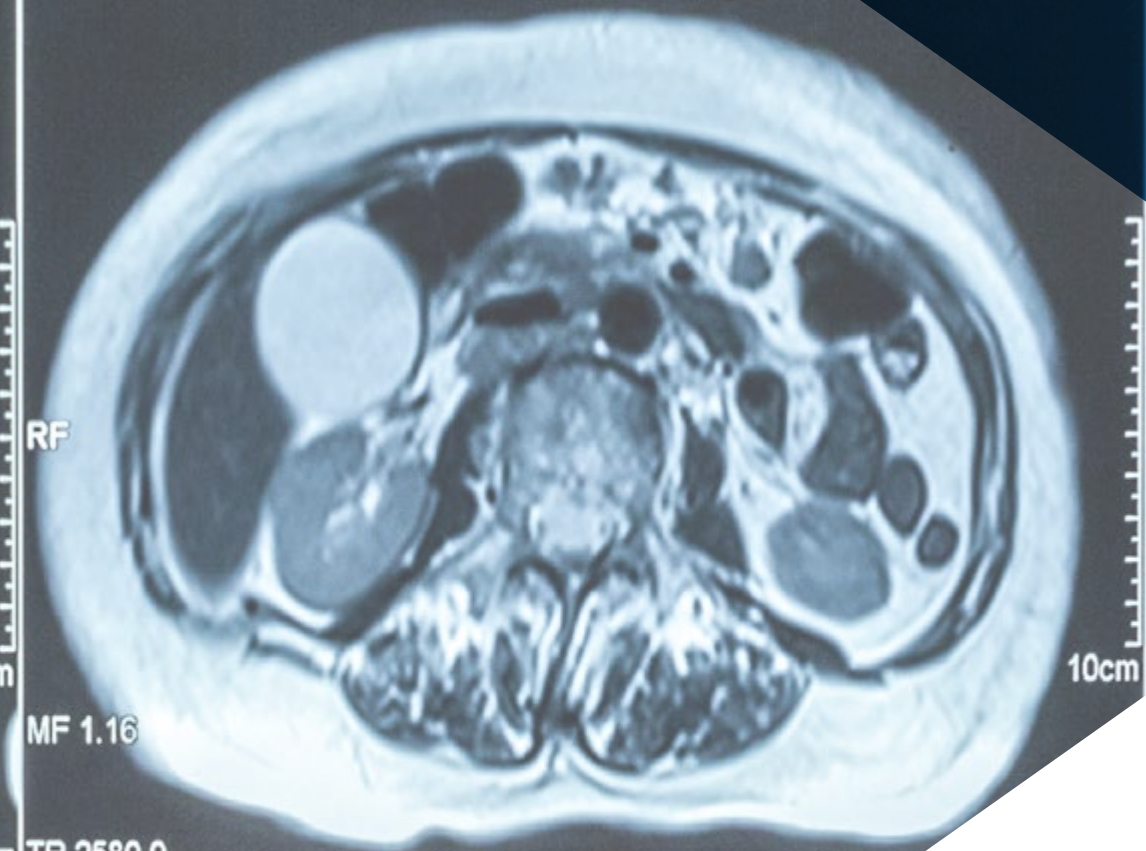
AH

MR B13
HFS
+LPH

STUDY 1
19.12.2012
11:26:24

MR B13
HFS
+LPH

BY 1
19.12.2012
11:26:24



RF

MF 1.16

TR 2580.0
TE 107.0
TA 05.41*3
BW 260.0
p2 M/NORM/DIS2D/FM/FIL

A1/SAT2
T:BO1,2;SP2-4
*tse2d1_29 / 150



RF

10cm



Patients with Neuroendocrine Tumors will require professionals like you, versed and prestigious thanks to your continuous effort to improve"

Since the Endocrine System is especially sensitive to Nutritional Alterations, Diabetes or Obesity, when these complications are added to Oncological issues such as Carcinoid Tumors, the attention of a specialized physician becomes crucial for the correct treatment of the patient.

Precisely Endocrine Oncology, and more specifically Neuroendocrine Tumors, can be a path to professional growth of special interest for students, since it is an area of specialization in which only physicians with the best knowledge can intervene given the delicacy of these conditions.

This TECH Postgraduate Diploma in Neuroendocrine Tumors is written following the most advanced educational methodologies on the market in order for students to not only achieve the specialization they seek, but to do so in the best possible way.

It also offers the possibility of taking the program completely online, which frees students from the constraints of face-to-face classes or fixed schedules. At TECH, it is the students who decide when, where and how to take on their own course load.

This **Postgraduate Diploma in Neuroendocrine Tumors** contains the most complete and up-to-date scientific program on the market. Its most notable features are:

- Case studies presented by experts in Endocrine Oncologic
- The graphic, schematic, and eminently practical contents with which they are created, provide scientific and practical information on the disciplines that are essential for professional practice
- Practical exercises where self-assessment can be used to improve learning
- Its special emphasis on innovative methodologies
- Theoretical lessons, questions to the expert, debate forums on controversial topics, and individual reflection assignments
- Content that is accessible from any fixed or portable device with an Internet connection



You are just one step away from achieving quality professional improvement. You won't regret it, join TECH today and start making a difference"

“

Be the reference in the field of Endocrine Oncology with a comprehensive and detailed study of the different Neuroendocrine Tumors”

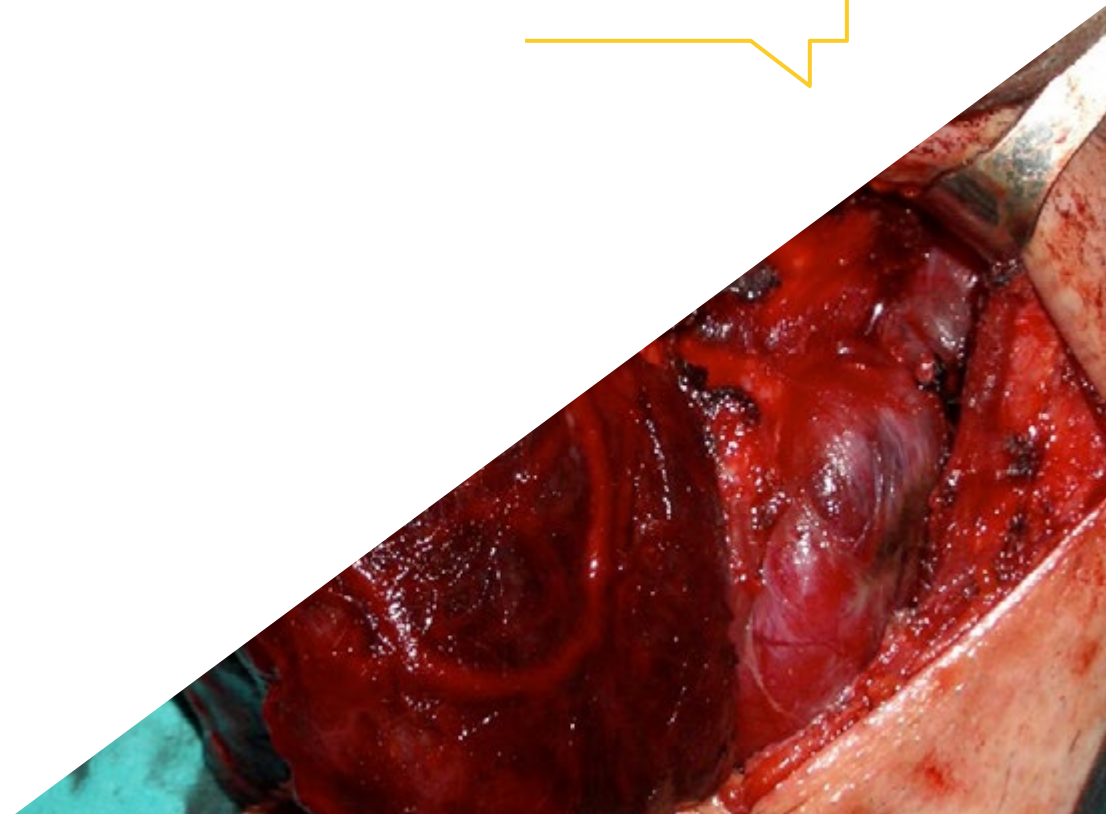
The program’s teaching staff includes professionals from the sector who contribute their work experience to this training program, as well as renowned specialists from leading societies and prestigious universities.

The multimedia content, developed with the latest educational technology, will provide the professional with situated and contextual learning, i.e., a simulated environment that will provide immersive training programmed to train in real situations.

This program is designed around Problem-Based Learning, whereby the professional must try to solve the different professional practice situations that arise during the academic year. For this purpose, the student will be assisted by an innovative interactive video system created by renowned and experienced experts.

This Oncology specialization will take you to a higher professional level, where you will rub shoulders with the best Medical Specialists.

There will be no secrets for you when dealing with any type of pathology related to Neuroendocrine Tumors.



02 Objectives

TECH is aware its students seek the best knowledge to excel in their field, so the effort is maximum to provide quality education that will lead them to achieve the professional improvement they want. Counting on the best professionals in Endocrine Oncology, students are guaranteed access to quality content to become distinguished professionals.





“

Your goals and TECH's goals are one and the same. You will be supported from the moment you sign up by a professional team that only wants to see you grow”

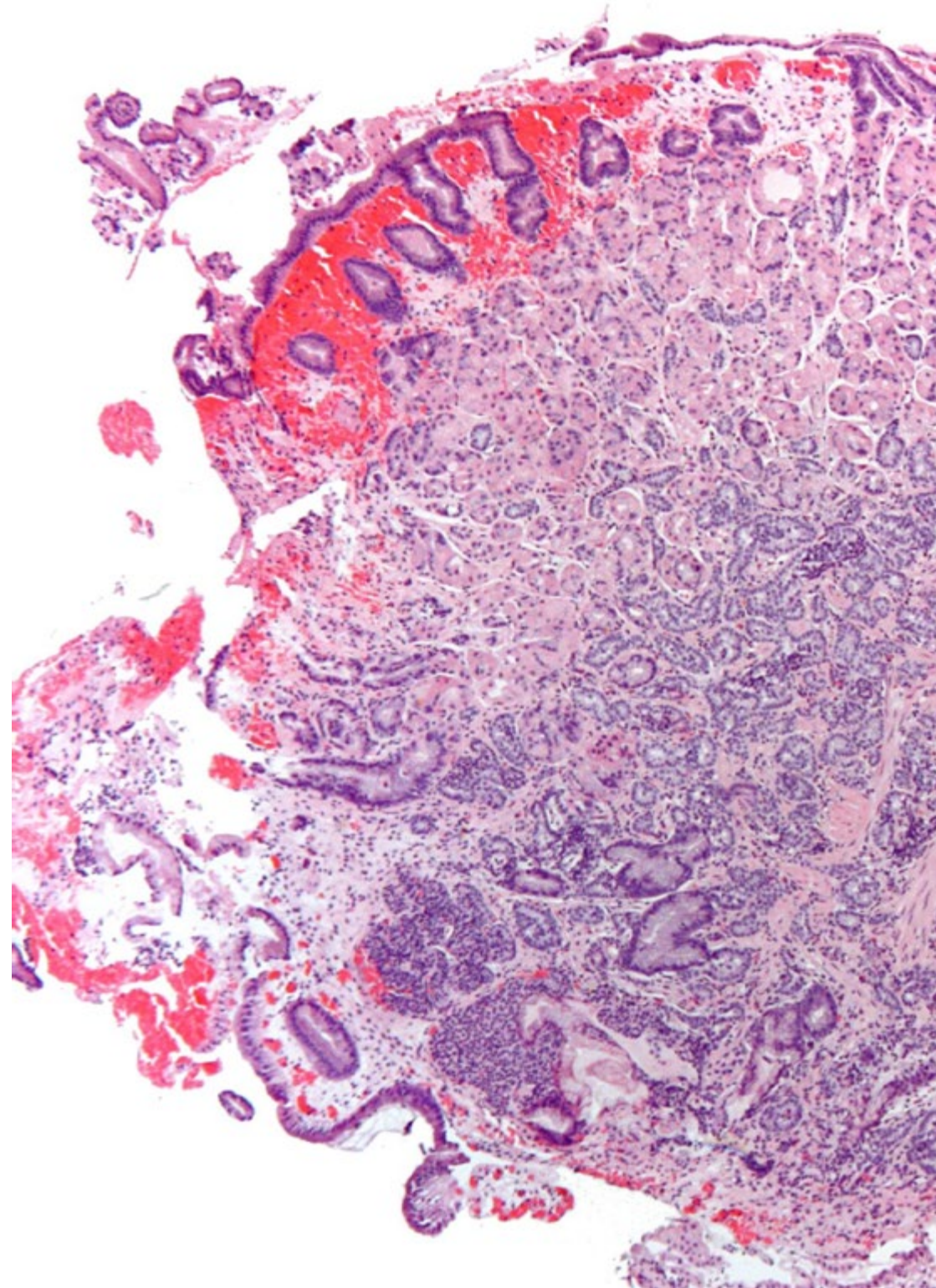


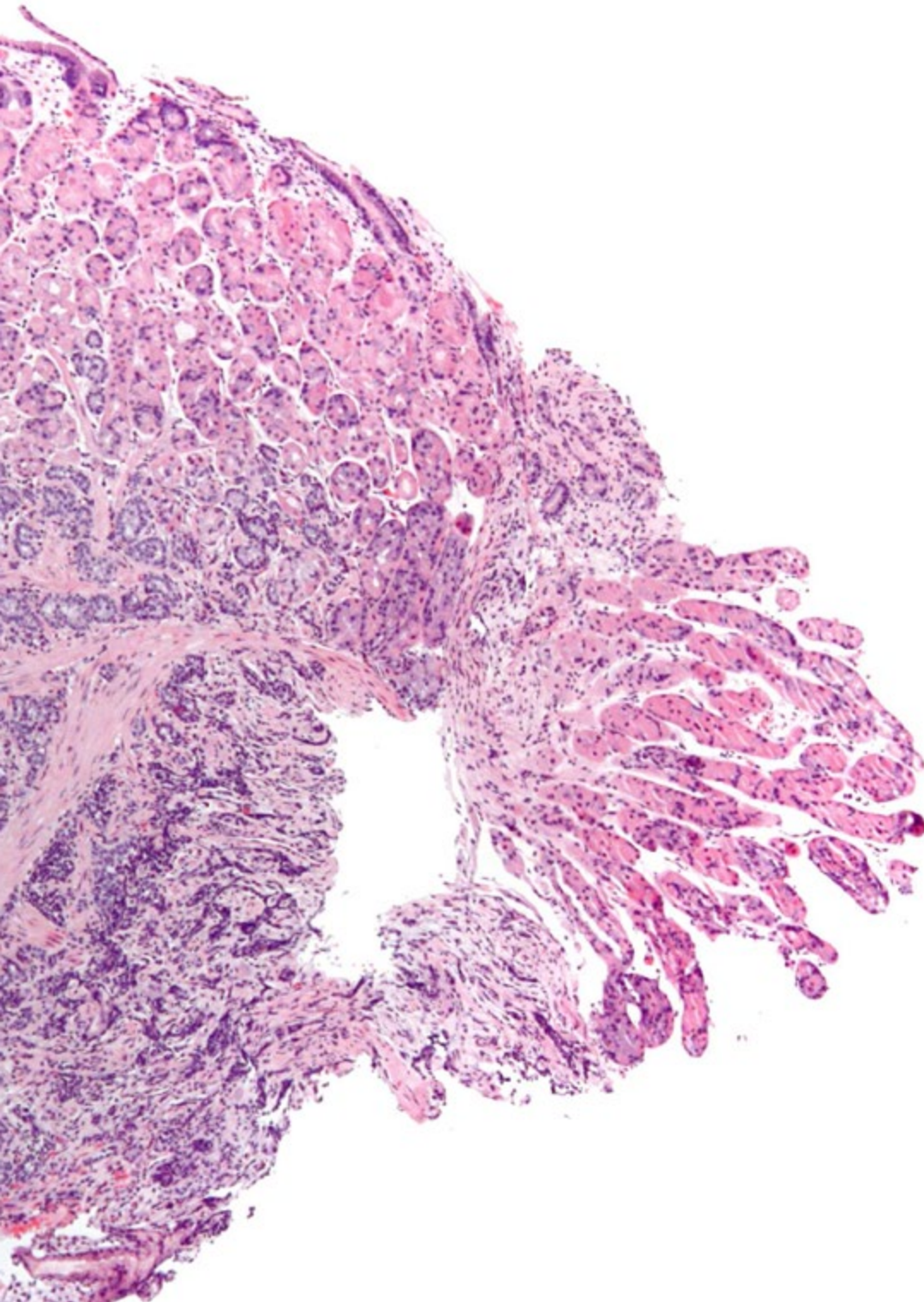
General Objectives

- ♦ Deepen the knowledge, diagnosis and treatment of Endocrine Oncologic Pathology
- ♦ Achieve an update in the most novel aspects in the Diagnosis and Treatment of Endocrine Oncologic Pathology
- ♦ Advance in the Multidisciplinary Approach essential for the Management of Endocrine Oncologic Pathology



Don't miss the opportunity to be at the forefront of Endocrine Oncology thanks to this Postgraduate Diploma in Neuroendocrine Tumors"





Specific Objectives

Module 1. Gastroenteropancreatic Neuroendocrine Tumors (GEP-NETs)

- ♦ Delve deeper into the Epidemiology and the Molecular and Cellular Bases for GEP-NETs
- ♦ Advance understanding of the diagnosis, treatment, monitoring and prognosis of GEP-NETs in different locations: pulmonary, gastric, intestinal and appendiceal

Module 2. GEP-NET: Anatomical and Functional Diagnosis Treating Locoregional Disease

- ♦ Advance the knowledge of Carcinoid Syndrome and Carcinoid Cardiopathy
- ♦ Delve deeper into the different types of Ectopic Hormone Secretion
- ♦ Approach the Diagnosis of GEP-NET: Molecular Markers, Echoendoscopy, and Imaging Tests
- ♦ Gain comprehensive knowledge of the Monitoring and Evaluation of Treatment Response
- ♦ Delve deeper into the Indications for the Treatment of G3 GEP-NETs

Module 3. Gastroenteropancreatic Neuroendocrine Tumors: Treating Advanced Stages of the Disease

- ♦ Know how to approach Advanced Stages of the Disease
- ♦ Gain deeper knowledge of the Surgical Treatment of Advanced Disease
- ♦ Advance knowledge of Pharmacological Treatments in Advanced Disease: Biological Treatments, Targeted Therapies, and Immunotherapy
- ♦ Acquire deeper knowledge of Radionuclide Therapy Treatment: Theragnosis
- ♦ Delve deeper into the Nutritional Approach potentially required by some Endocrine Tumor patients
- ♦ Advance in the Multidisciplinary Approach

03

Course Management

Students will find a teaching staff that, in addition to providing professional quality to its didactic content, also possesses a unique human quality to support students and guide them throughout the learning process. With personalized attention, focused on improving all the necessary skills in Neuroendocrine Tumors, students will be much closer to achieving their professional goals supported by the best possible teaching team.



A close-up photograph of a person's head and shoulder, wearing a blue surgical cap. The image is partially obscured by a diagonal white and blue graphic overlay.

“

TECH's professors has the teaching and professional experience necessary for you to succeed at being the best practitioner you can be”

International Guest Director

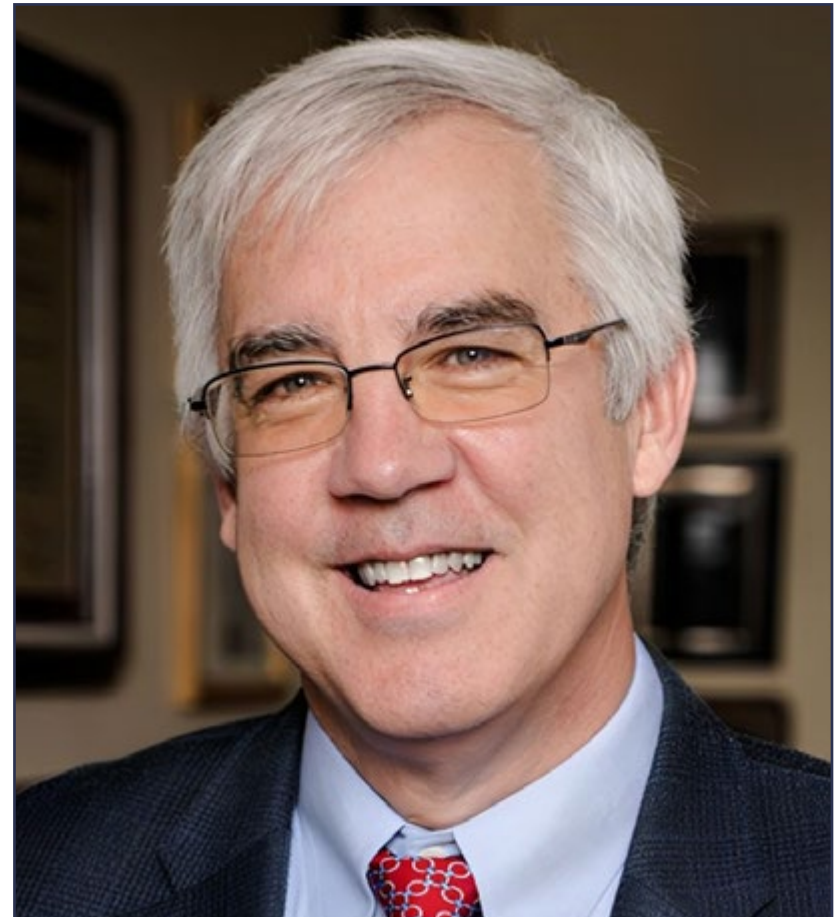
Dr. R. Michael Tuttle has developed, for more than 3 decades, a successful career in the medical field of Endocrinology. Thanks to his exceptional skills, this expert has received numerous international awards. He has received the Lewis Braverman Lectureship Award from the American Thyroid Association and the Knoll Pharmaceutical Mentor Award from the Endocrine Society.

He has also recently served as Clinical Director of the Endocrine Service at Memorial Sloan Kettering Hospital. He is also a permanent academic collaborator at Cornell University Medical School in New York.

In addition, Dr. Tuttle has distinguished himself on the clinical-research level. Specifically, he has delved deeply into the study of Thyroid Cancer and his work in this field has changed the paradigm regarding differentiated treatments (DTC) for this disease. Prior to his therapeutic innovations, all patients were treated with Total Thyroidectomy and Radioactive Iodine (RAI). However, this expert was one of the pioneers in using serum Thyroglobulin (Tg) as an indicator of residual DTC.

As such, he has led international studies that demonstrated the efficacy of recombinant thyrotropin (rhTSH) in determining TSH-stimulated Tg. This also led to the stratification of patients into risk categories and reduced the number of ionizing radiations. Together with his molecular analyses, his clinical work has opened a new scenario for multikinase inhibitor (TKI) therapies for radioiodine therapy-resistant DTC.

On the other hand, he has been a consultant to the Center for Disease Control for Radiation Exposure of Peoples in the Marshall Islands, the Hanford Downwinder Project, and a consultant to the National Academy of Sciences for Radiation Exposed Populations.



Dr. Tuttle, R. Michael

- Clinical Director of the Endocrinology Service at Memorial Sloan Kettering Cancer Center
- Specialist in Thyroid Cancer and Radioiodine Therapy.
- Academic Advisor, Cornell University Medical School, New York
- Fellowship at the Madigan Army Medical Center
- Residency in Medical Endocrinology at Dwight David Eisenhower Army Medical Center
- M.D. from the University of Louisville
- B.S. in Biology, Northern Kentucky University
- Member of:
 - Endocrine Society
 - American Thyroid Association
 - American Association of Endocrine Surgeons
 - American Association of Clinical Endocrinologists



Thanks to TECH, you will be able to learn with the best professionals in the world"

Management



Dr. Álvarez Escola, María Cristina

- Head of the Endocrinology and Nutrition Service at La Paz University Hospital
- Resident Tutor in the Endocrinology and Nutrition Service at the La Paz University Hospital
- Coordinator for the Endocrine Tumors Committee at La Paz University Hospital
- Coordinator for the Pituitary Tumors Committee and the Selar Area at La Paz University Hospital
- Coordinator for the SENDIMAD Neuroendocrinology Group
- Member of the National Commission of Endocrinology and Nutrition, Ministry of Health, Spain
- PhD in Medicine and Surgery from the University of Alcalá de Henares

Co-Direction**Dr. Fernández Martínez, Alberto**

- Assistant Physician Specialist in General Endocrinology at Móstoles University Hospital
- Attending physician specializing in Endocrinology and Nutrition at La Paz University Hospital
- Degree in Medicine from the University of Barcelona
- Postgraduate Specialization in Neuroendocrinology at the Oxford Centre for Diabetes, Endocrinology and Metabolism
- Endocrinology Team Assistant responsible for educational activities for diabetic patients at the Gran Canaria Diabetic Association
- Collaborating monitor for health education activities for diabetic patients

**Dr. Blanco Carrera, Concepción**

- Endocrinology and Nutrition Resident Tutor at Príncipe de Asturias Hospital
- Specialist Physician in Endocrinology and Nutrition, Area III Specialized Care
- Medical Specialist in the Endocrinology Service at Albacete General Hospital
- PhD in Medicine and Surgery from the Autonomous University of Madrid.
- Specialist in Endocrinology and Nutrition, MIR training at Puerta de Hierro Hospital
- Master's Degree in Health Care Unit Clinical Management from Universidad Internacional Menéndez Pelayo

Professors

Dr. Ángel Díaz, José

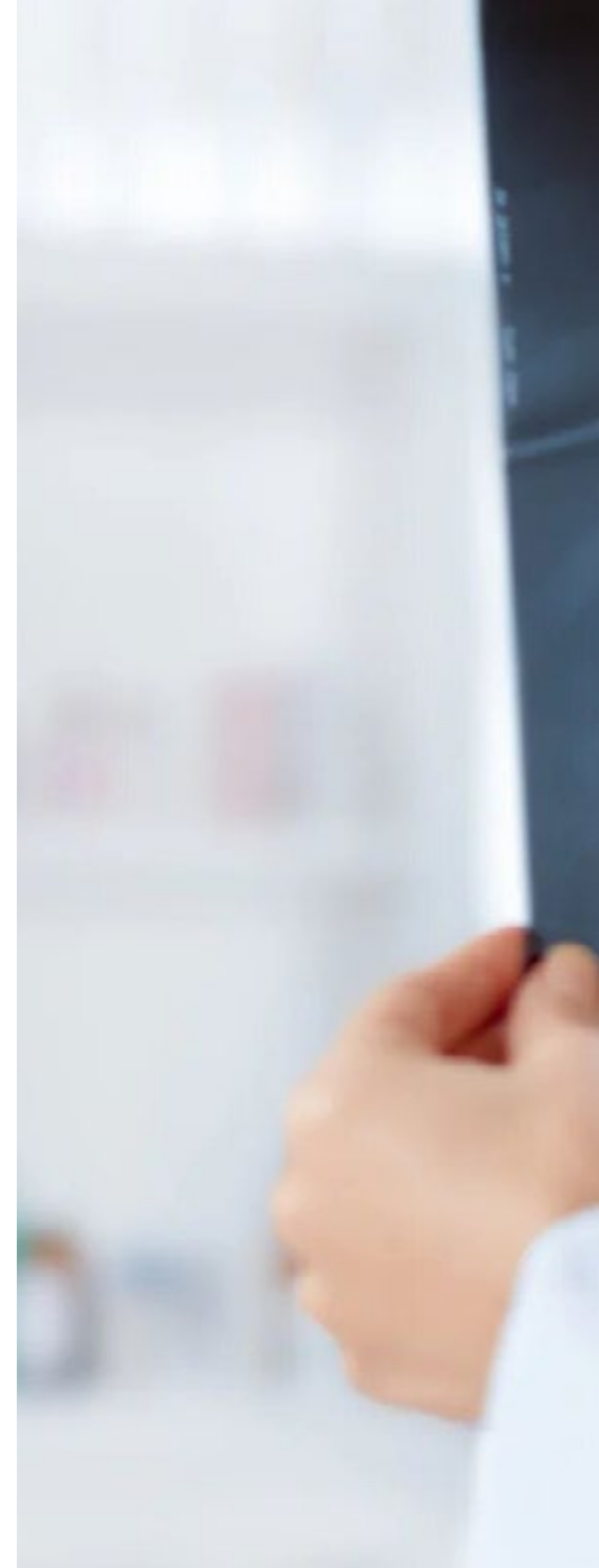
- ♦ Medical Specialist in Endocrinology and Nutrition at San Carlos Clinical Hospital
- ♦ Vice President of the Spanish Group of Neuroendocrine and Endocrine Tumors (GETNE)
- ♦ Member of the Tumor Committee at San Carlos Clinical Hospital
- ♦ Degree in Medicine and Surgery from the University of Santiago de Compostela
- ♦ PhD in Internal Medicine from the Complutense University of Madrid
- ♦ Master's Degree in Clinical Management

Dr. Custodio Carretero, Ana Belén

- ♦ Assistant Physician in the Medical Oncology Service, La Paz University Hospital
- ♦ Degree in Medicine and Surgery from the Complutense University of Madrid
- ♦ Official Doctoral Program in Internal Medicine from the Complutense University of Madrid
- ♦ Diploma in Advanced Studies in Medicine from the Complutense University of Madrid

Dr. Ayuela García, Susana

- ♦ Medical Specialist in General and Digestive System Surgery at La Paz University Hospital
- ♦ Assistant Physician in the General Surgery, Coloproctology Unit, La Paz University Hospital
- ♦ Head of Patient Safety, General Surgery Department, La Paz University Hospital
- ♦ Member of the Multidisciplinary Committee of Neuroendocrine Tumors, La Paz University Hospital
- ♦ Degree in Medicine and Surgery from the Autonomous University of Madrid
- ♦ Master's Degree in Bodily Injury Assessment at the Complutense University of Madrid



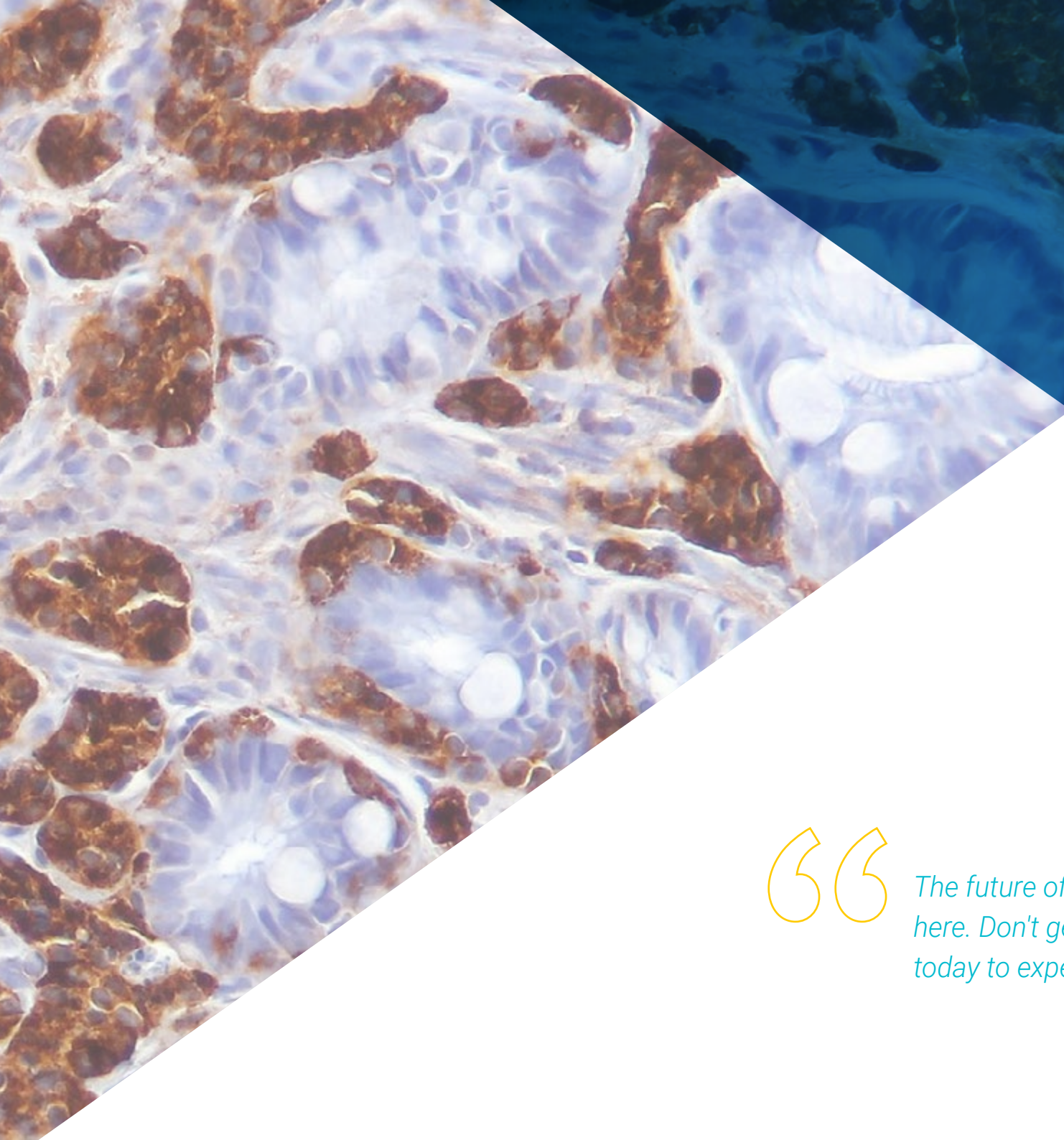


04

Structure and Content

TECH employs the best educational and didactic methodology for all its programs, ensuring that its students retain the concepts and typologies of Neuroendocrine Tumors through *relearning*. This teaching experience, developed and perfected over many years, ensures students will be prepared for a more demanding albeit more rewarding professional future, with transversal organizational and communication competencies to help them overcome all obstacles.





“

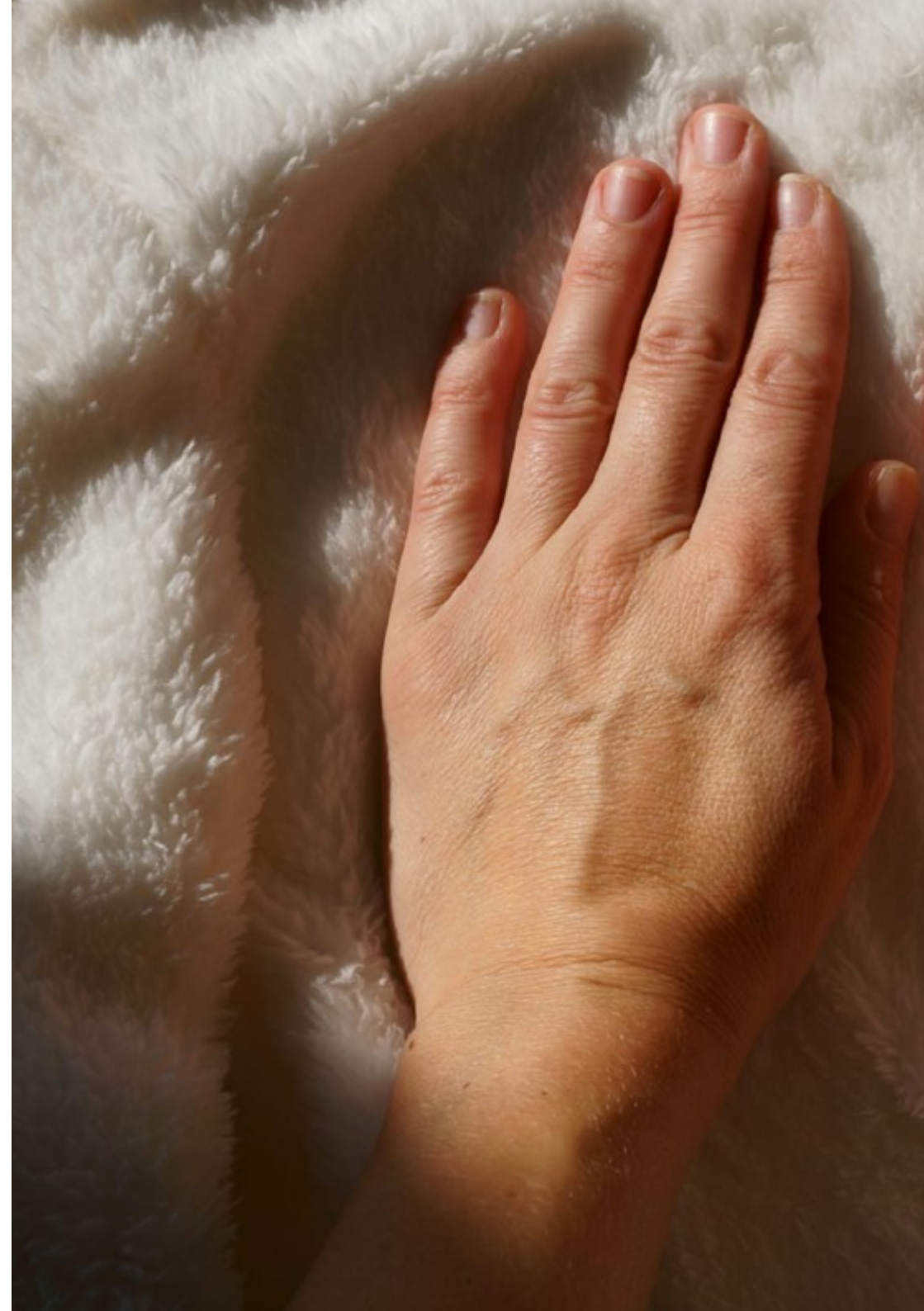
The future of education is already here. Don't get left behind and enroll today to experience it from the inside”

Module 1. Gastroenteropancreatic Neuroendocrine Tumors (GEP-NETs)

- 1.1. Gastroenteropancreatic Neuroendocrine Tumors
 - 1.1.1. Epidemiology
- 1.2. Molecular and Cellular Basis
- 1.3. Pathological Anatomy
 - 1.3.1. Classification Systems
- 1.4. Lung and Thymus NETs
- 1.5. Gastric NETs
- 1.6. Intestinal NETs: Appendix NET
- 1.7. Non-Functioning Pancreatic NETs
- 1.8. Gastrinoma
- 1.9. Insulinoma
- 1.10. Gucagonoma, Somatostatinoma, Vipoma: Other Functioning Tumors

Module 2. GEP-NET: Anatomical and Functional Diagnosis Treating Locoregional Disease

- 2.1. Carcinoid Syndrome: Carcinoid Cardiopathy
- 2.2. ACTH and Other Hormone Ectopic Secretion Syndromes
- 2.3. GEP-NET Diagnosis and Monitoring: Biological Markers
 - 2.3.1. Usefulness in Diagnosis and Monitoring
- 2.4. GEP-NET Diagnosis and Monitoring: Endoscopy and Echoendoscopy-Guided Fine Needle Aspiration Puncture (FNA) in the Diagnosis and Monitoring of GEP-NET
- 2.5. GEP-NET Diagnosis and Monitoring: Imaging Tests I
 - 2.5.1. Ultrasound, Computerized Tomography, Magnetic Resonance Imaging
 - 2.5.2. Treatment Response Criteria (RECIST, Choi, and Others)
- 2.6. GEP-NET Diagnosis and Monitoring: Imaging Tests II: Nuclear Medicine in the Diagnosis and Monitoring of GEP-NETs
- 2.7. Surgical Treatment for Pulmonary NET
- 2.8. Surgical Treatment for Gastric NET
- 2.9. Surgical Treatment for Intestinal NET
- 2.10. Surgical Treatment for Pancreatic NET
 - 2.10.1 Treatment for Incidentally Discovered Non-Functioning Pancreatic NETs: Surgery / Monitoring
- 2.11. Surgical Treatment for G3 Tumors: Surgical Treatment for MINEN



Module 3. Gastroenteropancreatic Neuroendocrine Tumors: Treating Advanced Stages of the Disease

- 3.1. Surgical Treatment in Advanced Stages of the Disease
 - 3.1.1. Surgical Treatment Indication for Primary Tumors
 - 3.1.2. Surgical Treatment for Liver and Other Metastases
- 3.2. Locoregional Treatments
 - 3.2.1. Embolization
 - 3.2.2. Radiofrequency
 - 3.2.3. Other Locoregional Treatments
- 3.3. Biological Treatments: Somatostatin Analogues and Others
- 3.4. Chemotherapy and Targeted Therapies
- 3.5. Theragnosis: Radionuclide Therapy
- 3.6. Treatment Sequencing
- 3.7. Nutritional Management for GEP-NET Patients
- 3.8. Importance of Tumor Committees and Patient Associations
 - 3.8.1. Multidisciplinary Approach
 - 3.8.2. Role of Patient Associations: NET Spain



You will have access to a complete, flexible curriculum designed to meet all your needs”

05

Methodology

This academic program offers students a different way of learning. Our methodology uses a cyclical learning approach: **Relearning**.

This teaching system is used, for example, in the most prestigious medical schools in the world, and major publications such as the **New England Journal of Medicine** have considered it to be one of the most effective.





“

Discover Relearning, a system that abandons conventional linear learning, to take you through cyclical teaching systems: a way of learning that has proven to be extremely effective, especially in subjects that require memorization"

At TECH we use the Case Method

What should a professional do in a given situation? Throughout the program, students will face multiple simulated clinical cases, based on real patients, in which they will have to do research, establish hypotheses, and ultimately resolve the situation. There is an abundance of scientific evidence on the effectiveness of the method. Specialists learn better, faster, and more sustainably over time.

With TECH you will experience a way of learning that is shaking the foundations of traditional universities around the world.



According to Dr. Gérvas, the clinical case is the annotated presentation of a patient, or group of patients, which becomes a "case", an example or model that illustrates some peculiar clinical component, either because of its teaching power or because of its uniqueness or rarity. It is essential that the case is based on current professional life, trying to recreate the real conditions in the physician's professional practice.

“

Did you know that this method was developed in 1912, at Harvard, for law students? The case method consisted of presenting students with real-life, complex situations for them to make decisions and justify their decisions on how to solve them. In 1924, Harvard adopted it as a standard teaching method”

The effectiveness of the method is justified by four fundamental achievements:

1. Students who follow this method not only achieve the assimilation of concepts, but also a development of their mental capacity, through exercises that evaluate real situations and the application of knowledge.
2. Learning is solidly translated into practical skills that allow the student to better integrate into the real world.
3. Ideas and concepts are understood more efficiently, given that the example situations are based on real-life.
4. Students like to feel that the effort they put into their studies is worthwhile. This then translates into a greater interest in learning and more time dedicated to working on the course.



Relearning Methodology

At TECH we enhance the case method with the best 100% online teaching methodology available: Relearning.

This university is the first in the world to combine the study of clinical cases with a 100% online learning system based on repetition, combining a minimum of 8 different elements in each lesson, a real revolution with respect to the mere study and analysis of cases.

Professionals will learn through real cases and by resolving complex situations in simulated learning environments. These simulations are developed using state-of-the-art software to facilitate immersive learning.



At the forefront of world teaching, the Relearning method has managed to improve the overall satisfaction levels of professionals who complete their studies, with respect to the quality indicators of the best online university (Columbia University).

With this methodology, more than 250,000 physicians have been trained with unprecedented success in all clinical specialties regardless of surgical load. Our pedagogical methodology is developed in a highly competitive environment, with a university student body with a strong socioeconomic profile and an average age of 43.5 years old.

Relearning will allow you to learn with less effort and better performance, involving you more in your specialization, developing a critical mindset, defending arguments, and contrasting opinions: a direct equation to success.

In our program, learning is not a linear process, but rather a spiral (learn, unlearn, forget, and re-learn). Therefore, we combine each of these elements concentrically.

The overall score obtained by TECH's learning system is 8.01, according to the highest international standards.



This program offers the best educational material, prepared with professionals in mind:



Study Material

All teaching material is produced by the specialists who teach the course, specifically for the course, so that the teaching content is highly specific and precise.

These contents are then applied to the audiovisual format, to create the TECH online working method. All this, with the latest techniques that offer high quality pieces in each and every one of the materials that are made available to the student.



Surgical Techniques and Procedures on Video

TECH introduces students to the latest techniques, the latest educational advances and to the forefront of current medical techniques. All of this in direct contact with students and explained in detail so as to aid their assimilation and understanding. And best of all, you can watch the videos as many times as you like.



Interactive Summaries

The TECH team presents the contents attractively and dynamically in multimedia lessons that include audio, videos, images, diagrams, and concept maps in order to reinforce knowledge.

This exclusive educational system for presenting multimedia content was awarded by Microsoft as a "European Success Story".



Additional Reading

Recent articles, consensus documents and international guidelines, among others. In TECH's virtual library, students will have access to everything they need to complete their course.





Expert-Led Case Studies and Case Analysis

Effective learning ought to be contextual. Therefore, TECH presents real cases in which the expert will guide students, focusing on and solving the different situations: a clear and direct way to achieve the highest degree of understanding.



Testing & Retesting

We periodically evaluate and re-evaluate students' knowledge throughout the program, through assessment and self-assessment activities and exercises, so that they can see how they are achieving their goals.



Classes

There is scientific evidence on the usefulness of learning by observing experts. The system known as Learning from an Expert strengthens knowledge and memory, and generates confidence in future difficult decisions.



Quick Action Guides

TECH offers the most relevant contents of the course in the form of worksheets or quick action guides. A synthetic, practical, and effective way to help students progress in their learning.



06

Certificate

The Postgraduate Diploma in Neuroendocrine Tumors guarantees, in addition to the most rigorous and up-to-date training, access to a qualification issued by TECH Global University.



“

Successfully complete this training program and receive your diploma without travel or laborious paperwork”

This program will allow you to obtain your **Postgraduate Diploma in Neuroendocrine Tumors** endorsed by **TECH Global University**, the world's largest online university.

TECH Global University is an official European University publicly recognized by the Government of Andorra (*official bulletin*). Andorra is part of the European Higher Education Area (EHEA) since 2003. The EHEA is an initiative promoted by the European Union that aims to organize the international training framework and harmonize the higher education systems of the member countries of this space. The project promotes common values, the implementation of collaborative tools and strengthening its quality assurance mechanisms to enhance collaboration and mobility among students, researchers and academics.

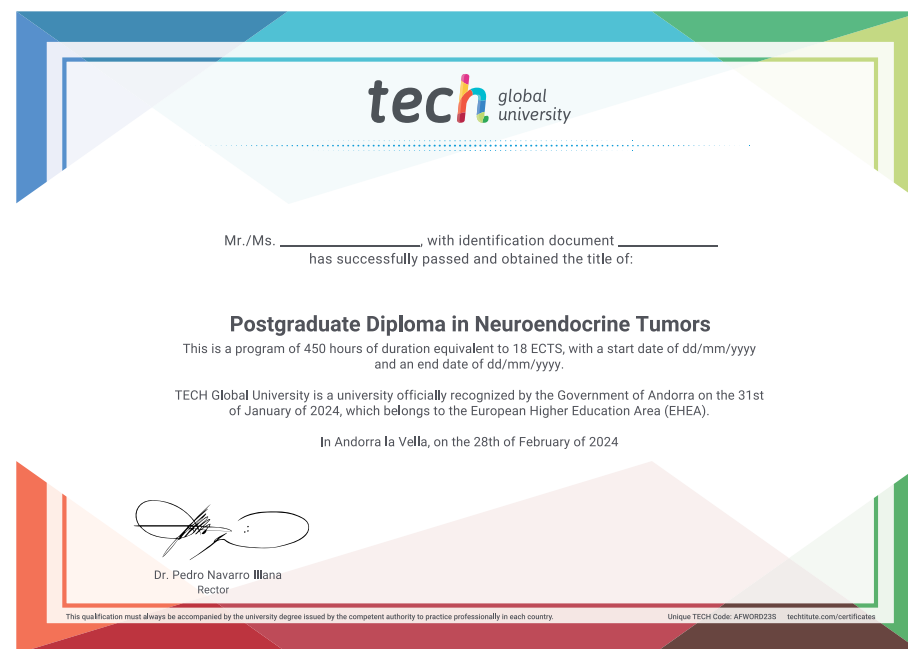
This **TECH Global University** title is a European program of continuing education and professional updating that guarantees the acquisition of competencies in its area of knowledge, providing a high curricular value to the student who completes the program.

Title: **Postgraduate Diploma in Neuroendocrine Tumors**

Modality: **online**

Duration: **6 months**

Accreditation: **18 ECTS**



*Apostille Convention. In the event that the student wishes to have their paper diploma issued with an apostille, TECH Global University will make the necessary arrangements to obtain it, at an additional cost.

future
health confidence people
education information tutors
guarantee accreditation teaching
institutions technology learning
community commitment
personalized service innovation
knowledge present quality
development language
virtual classroom



Postgraduate Diploma Neuroendocrine Tumors

- » Modality: online
- » Duration: 6 months
- » Certificate: TECH Global University
- » Credits: 18 ECTS
- » Schedule: at your own pace
- » Exams: online

Postgraduate Diploma Neuroendocrine Tumors

