

# Postgraduate Certificate

## Update on Ocular Surface and Cornea





## Postgraduate Certificate Update on Ocular Surface and Cornea

- » Modality: online
- » Duration: 6 weeks
- » Certificate: TECH Technological University
- » Dedication: 16h/week
- » Schedule: at your own pace
- » Exams: online

Website: [www.techtitute.com/in/medicine/postgraduate-certificate/update-ocular-surface-cornea](http://www.techtitute.com/in/medicine/postgraduate-certificate/update-ocular-surface-cornea)

# Index

01

Introduction

---

*p. 4*

02

Objectives

---

*p. 8*

03

Course Management

---

*p. 12*

04

Structure and Content

---

*p. 16*

05

Methodology

---

*p. 20*

06

Certificate

---

*p. 28*

# 01

# Introduction

Advances in diagnostic and therapeutic procedures for ocular surface and cornea pathology, as well as other eye diseases, push specialists to continually update their knowledge. This Postgraduate Certificate offers the opportunity to get up-to-date in a practical way, adapted to medical ophthalmologists and using the latest 100% online educational technology so that you can combine it with your professional work.



“

*Increase your knowledge of the procedures for addressing ocular surface and corneal disorders through this program, where you will find the best teaching material, high-definition images and real clinical cases. Learn about the latest advances in Diagnosis and Therapeutics techniques to provide quality care"*

Dry eye is a very common pathology in ophthalmology, with a prevalence that ranges between 10 and 20% of the world population, although in Eastern countries it can be as high as 33%, according to data from the Spanish Ocular Surface and Cornea Group (GESOC). It is the most frequent reason for ophthalmic consultation, and can affect the quality of life and well-being of people who suffer from it to a greater or lesser extent.

This Postgraduate Certificate aims to respond to growing interest in this pathology, as well as other ocular surface and cornea disorders, facilitating the acquisition of an advanced specialization in the diagnosis and treatment of eye diseases.

Throughout the Postgraduate Certificate, treatments on the physiology of the ocular surface and cornea are addressed, including the latest developments in the field of ocular surgery, and together with the latest developments in the area of amniotic membrane transplantation and stem cell surgery to treat ocular surface disorders.

This Postgraduate Certificate in Update on Ocular Surface and Cornea aims to update specialists on the advances that are being made in addressing surface pathologies, from the diagnostic to the therapeutic procedure, using the latest scientific evidence.

This **Postgraduate Certificate in Update on Ocular Surface and Cornea** comprises the most comprehensive and up-to-date scientific program on the market. The most important features of the Postgraduate Certificate are:

- ♦ Development of clinical cases presented by experts in eye surgery. The graphic, schematic, and eminently practical contents with which they are created contain clinical information that is indispensable for professional practice.
- ♦ Diagnostic and therapeutic innovations in the management of patients with ocular surface and corneal pathology.
- ♦ It uses practical exercises where learning can be improved through the self-evaluation process.
- ♦ An interactive learning system based on algorithms for decision making in corneal pathology procedures in the clinical situations presented.
- ♦ All of this will be complemented by theoretical lessons, questions to the expert, debate forums on controversial topics, and individual reflection assignments.
- ♦ Content that is accessible from any fixed or portable device with an Internet connection.



*Refresh your knowledge through the Postgraduate Certificate in Update on Ocular Surface and Cornea"*

“ *This Postgraduate Certificate may be the best investment you make in selecting an update program for two reasons: in addition to updating your knowledge on procedures for addressing ocular surface and cornea pathologies, you will obtain a Postgraduate Certificate certificate issued by TECH Technological University*”

The teaching staff includes healthcare professionals from the field of ophthalmology, who bring their work experience to this specialization program, as well as renowned professionals from other specialties.

The multimedia content developed with the latest educational technology will provide the professional with situated and contextual learning, i.e., a simulated environment that will provide immersive training program to train in real situations.

Problem-Based Learning underpins the design of this program, and doctors must use it to try and solve the different professional practice situations that arise throughout the Postgraduate Certificate. To this end, you will be assisted by an innovative, interactive video system created by renowned and experienced experts in the field of ophthalmology who have extensive teaching experience.

*This program offers training in simulated environments, which provides an immersive learning experience designed to prepare you for real-life situations.*

*It includes clinical cases to bring the program's degree as close as possible to the reality of medical care.*



# 02

# Objectives

The main objective of the program is the development of theoretical and practical learning, so that physicians can master in a practical and thorough way the approach to patients with Ocular Surface and Cornea pathologies.







“

*This update program will generate a sense of confidence when practising medicine, which will help you grow both personally and professionally”*



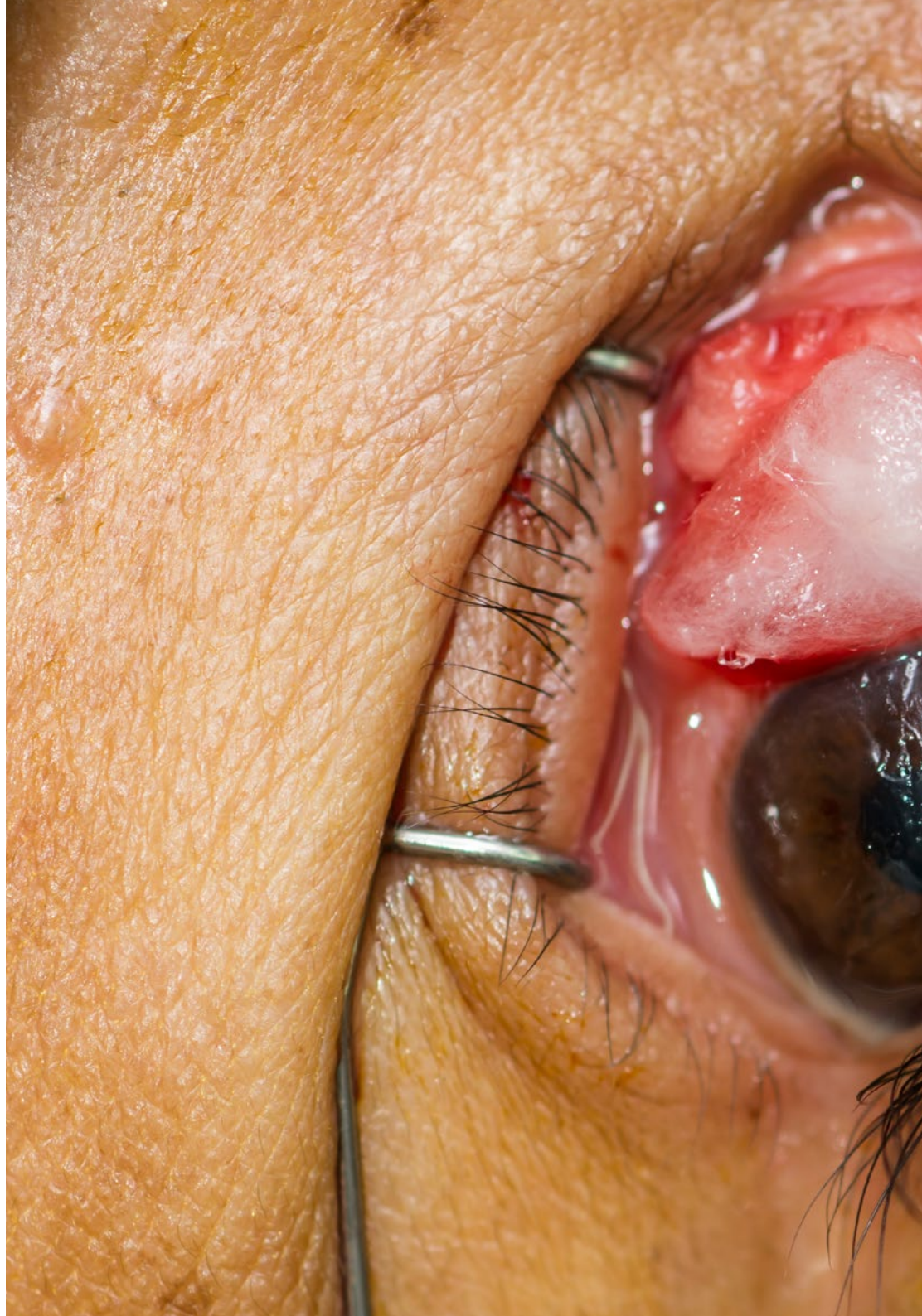
## General Objective

---

- Update specialists' knowledge and facilitate the acquisition of an advanced specialization in the diagnosis and latest advances in the treatment of ocular surface and cornea disease, so that patients can receive safe, quality treatment based on the latest scientific evidence.



*Make the most of the opportunity and get up to date on the latest developments in managing ocular surface and corneal disorder patients"*





## Specific Objectives

---

- ◆ Address the diagnosis and management of the main corneal syndromes (infectious keratitis, immunological keratitis, corneal dystrophies and degenerations, corneal leukomas, keratoconus...).
- ◆ Describe the pathology affecting the cornea-ocular surface unit and describe how it is managed.
- ◆ Point out the pharmacology of the ocular surface and cornea.
- ◆ Define the main complementary examinations used to study patients with ocular surface and cornea pathologies.
- ◆ List the signs and symptoms of ocular surface inflammatory diseases and address their medical and surgical management.
- ◆ Point out the different causes of corneal opacity, as well as the ideal timing for surgical intervention.
- ◆ Address the diagnosis and management of patients with keratoconus and other corneal ectasias.

03

# Course Management

This program includes on its teaching staff highly regarded health professionals in the field of ophthalmology, who bring their work experience to this specialization program. In addition, renowned specialists, members of prestigious national and international scientific communities, are involved designing and preparing the program.



“

*Learn from leading professionals the latest advances in diagnostic and therapeutic procedures in Ocular Surface and Cornea”*

## Management



### Dr. Navea Tejerina, Amparo

- ♦ FISABIO-Ophthalmology Medical Director (FOM)
- ♦ Doctor of Medicine. Specialist in Ophthalmology.
- ♦ President of the FOM Teaching Commission. Head of the Retina Unit of the FOM, Head of the Ophthalmology Collection, FISABIO Biobank.
- ♦ Associate Professor in charge of Ophthalmology at UCH-CEU Medicine in Castellón and Valencia.
- ♦ Extensive experience in scientific publications, communications and presentations at conferences. Extensive experience in research work, projects, and thesis direction.
- ♦ Member of the Spanish Society of Ophthalmology (SEO), the American Academy of Ophthalmology (AAO) and the Association for Research in Vision and Ophthalmology (ARVO). Sircova. IP OftaRed

## Academic Coordination



### Dr. Ruiz Moreno, José María

- ♦ Professor of Ophthalmology at the Faculty of Medicine at the UCLM (University of Castilla La Mancha).
- ♦ Head of Service of the Puerta de Hierro Hospital Majadahonda
- ♦ Medical Director of the Vissum Ophthalmologic Corporation
- ♦ Coordinator and Professor of the Doctorate Program in "Health Sciences" at UCLM.
- ♦ President of the Spanish Society of Retina and Vitreous (SERV)
- ♦ Extensive experience in scientific publications, communications, and presentations at national and international conferences.
- ♦ Development of lines of research in: Age-Related Macular Degeneration (AMD) and Pathological Myopia (PM).
- ♦ Member of the Spanish Society of Ophthalmology (SEO), the American Academy of Ophthalmology (AAO) and the European Society of Retina Specialists (EURETINA). IP OftaRed

## Professors

### **Dr. Del Buey Sayas, M<sup>a</sup> Ángeles**

- ♦ Degree in Medicine and Surgery
- ♦ Specialist in Ophthalmology.
- ♦ Zaragoza, Spain

### **Dr. Fandiño López, Adriana**

- ♦ Degree in Medicine and Surgery
- ♦ Specialist in Ophthalmology.
- ♦ FISABIO Medical Ophthalmology. Valencia, Spain

### **Dr. Fernández López, Ester**

- ♦ Degree in Medicine and Surgery
- ♦ Specialist in Ophthalmology.
- ♦ Cornea Unit
- ♦ FISABIO Medical Ophthalmology. Valencia, Spain

### **Dr. Pastor Pascual, Francisco**

- ♦ Degree in Medicine and Surgery
- ♦ Specialist in Ophthalmology.
- ♦ Cornea Specialist
- ♦ FISABIO Medical Ophthalmology. Valencia, Spain

### **Dr. Peris Martínez, Cristina**

- ♦ Degree in Medicine and Surgery
- ♦ Specialist in Ophthalmology.
- ♦ Cornea Specialist
- ♦ FISABIO Medical Ophthalmology. Valencia, Spain

### **Dr. Roig Revert, M<sup>a</sup> José**

- ♦ Degree in Medicine and Surgery
- ♦ Specialist in Ophthalmology.
- ♦ FISABIO Medical Ophthalmology. Valencia, Spain

# 04

# Structure and Content

The structure of the contents has been designed by a team of professionals who recognise the implications of medical training in ophthalmology, are aware of the relevance of current training to treat patients with vision problems, and are committed to quality teaching using new educational technologies.





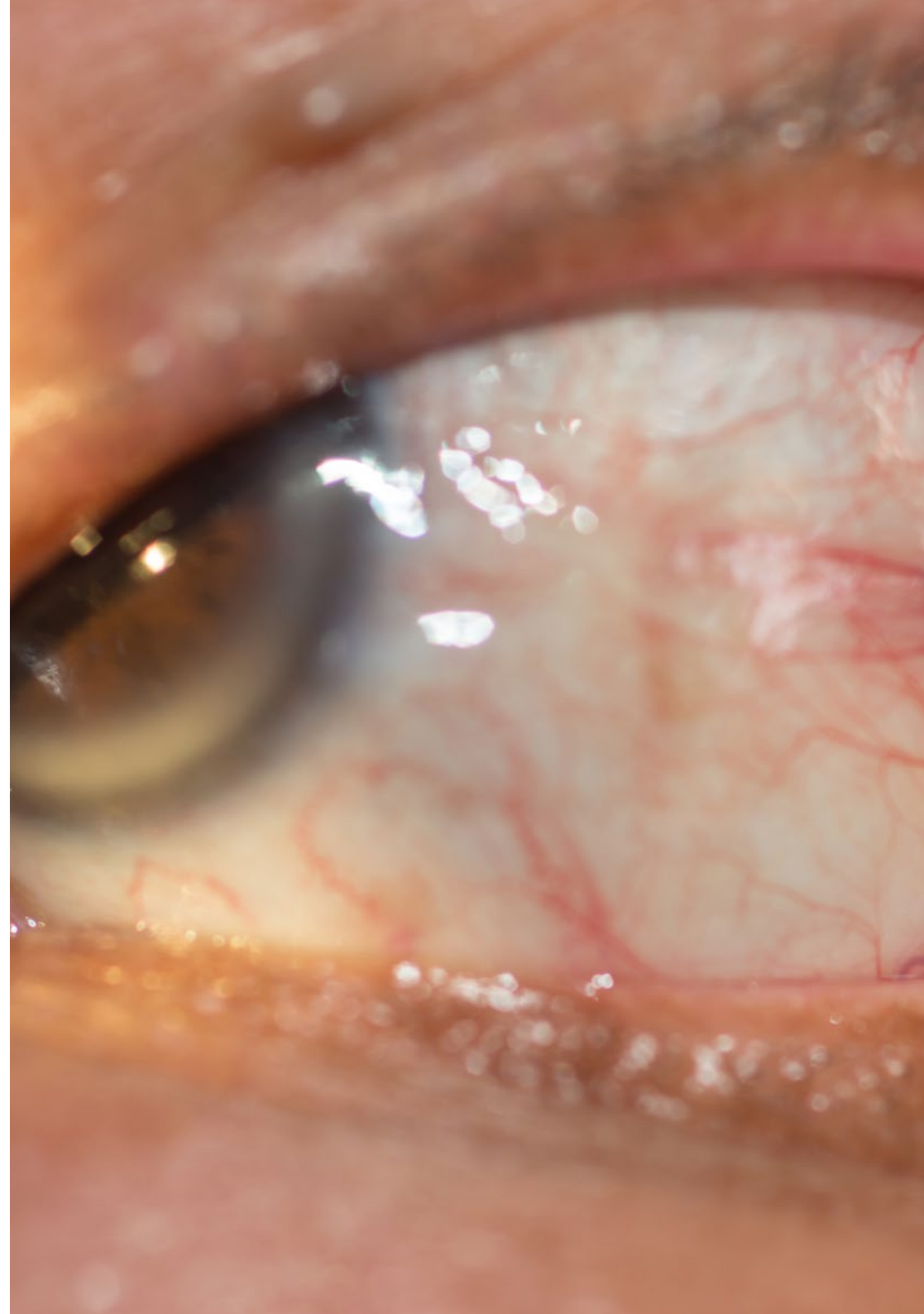


“

*This Postgraduate Certificate in Update on Ocular Surface and Cornea comprises the most comprehensive and up-to-date scientific program on the market”*

## Module 1. Ocular Surface and Cornea Update

- 1.1. Corneal Dystrophies.
- 1.2. Dry Eye and Ocular Surface Pathology.
- 1.3. Corneal Surgery (PPK, DALK, DSAEK, DMEK).
- 1.4. Corneal Crosslinking.
- 1.5. Conjunctival and Corneal Neoplasms.
- 1.6. Toxic and Traumatic Lesions of the Anterior Segment.
- 1.7. Ectasia (Keratoconus, Pellucid Marginal Degeneration, Post-LASIK Degenerations).
- 1.8. Corneal Infectious Pathology I.
- 1.9. Corneal Infectious Pathology II.





“

*A unique, key, and decisive master's degree experience to boost your professional development”*

05

# Methodology

This training program provides you with a different way of learning. Our methodology uses a cyclical learning approach: ***Re-learning***.

This teaching system is used in the most prestigious medical schools in the world, and major publications such as the ***New England Journal of Medicine*** have considered it to be one of the most effective.



“

*Discover Re-learning, a system that abandons conventional linear learning, to take you through cyclical teaching systems: a way of learning that has proven to be extremely effective, especially in subjects that require memorization"*

## At TECH we use the Case Method

In a given situation, what would you do? Throughout the education program you will be presented with multiple simulated clinical cases based on real patients, where you will have to research, establish hypotheses and, ultimately, resolve the situation. There is abundant scientific evidence on the effectiveness of the method. Specialists learn better, faster, and more sustainably over time.

*With TECH you can experience a way of learning that is shaking the foundations of traditional universities around the world.*



According to Dr. Gérvas, the clinical case is the annotated presentation of a patient, or group of patients, which becomes a "case", an example or model that illustrates some peculiar clinical component, either because of its teaching potential or because of its uniqueness or rarity. It is essential that the case is based on current professional life, trying to recreate the real conditions in professional medical practice.

“

*Did you know that this method was developed in 1912 at Harvard for law students? The case method consisted of presenting students with real-life, complex situations for them to make decisions and justify their decisions on how to solve them. In 1924, Harvard adopted it as a standard teaching method”*

The effectiveness of the method is justified by four fundamental achievements:

1. Students who follow this method not only grasp concepts, but also develop their mental capacity by evaluating real situations and applying their knowledge.
2. The learning process has a clear focus on practical skills that allow the student to better integrate into the real world.
3. Ideas and concepts are understood more efficiently, given that the example situations are based on real-life.
4. Students like to feel that the effort they put into their studies is worthwhile. This then translates into a greater interest in learning and more time dedicated to working on the course.



## Re-Learning Methodology

At TECH we enhance the Harvard case method with the best 100% online teaching methodology available: Re-learning.

Our University is the first in the world to combine the study of clinical cases with a 100% online learning system based on repetition, combining a minimum of 8 different elements in each lesson, which represent a real revolution with respect to simply studying and analyzing cases.



*The physician will learn through real cases and by solving complex situations in simulated learning environments. These simulations are developed using state-of-the-art software to facilitate immersive learning.*



At the forefront of world teaching, the Re-learning method has managed to improve the overall satisfaction levels of professionals who complete their studies, with respect to the quality indicators of the best Spanish-speaking online university (Columbia University).

With this methodology we have trained more than 250,000 physicians with unprecedented success, in all clinical specialties regardless of the surgical load. All this in a highly demanding environment, where the students have a strong socio-economic profile and an average age of 43.5 years.

*Re-learning will allow you to learn with less effort and better performance, involving you more in your specialization, developing a critical mindset, defending arguments, and contrasting opinions: a direct equation to success.*

In our program, learning is not a linear process, but rather a spiral (we learn, unlearn, forget, and re-learn). Therefore, we combine each of these elements concentrically.

The overall score obtained by our learning system is 8.01, according to the highest international standards.



In this program you will have access to the best educational material, prepared with you in mind:



#### Study Material

All teaching material is produced by the specialists who teach the course, specifically for the course, so that the teaching content is highly specific and precise.

This content is then adapted in an audiovisual format that will create our way of working online, with the latest techniques that allow us to offer you high quality in all of the material that we provide you with.



#### Latest Techniques and Procedures on Video

We introduce you to the latest techniques, to the latest educational advances, to the forefront of current medical techniques. All this, in first person, with the maximum rigor, explained and detailed for your assimilation and understanding. And best of all, you can watch them as many times as you want.



#### Interactive Summaries

We present the contents attractively and dynamically in multimedia lessons that include audio, videos, images, diagrams, and concept maps in order to reinforce knowledge.

This unique multimedia content presentation training system was awarded by Microsoft as a "European Success Story".



#### Additional Reading

Recent articles, consensus documents, international guides. in our virtual library you will have access to everything you need to complete your training.





#### Expert-Led Case Studies and Case Analysis

Effective learning ought to be contextual. Therefore, we will present you with real case developments in which the expert will guide you through focusing on and solving the different situations: a clear and direct way to achieve the highest degree of understanding.



#### Testing & Re-testing

We periodically evaluate and re-evaluate your knowledge throughout the program, through assessment and self-assessment activities and exercises: so that you can see how you are achieving your goals.



#### Classes

There is scientific evidence suggesting that observing third-party experts can be useful.

Learning from an expert strengthens knowledge and memory, and generates confidence in our future difficult decisions.



#### Quick Action Guides

We offer you the most relevant contents of the course in the form of worksheets or quick action guides. A synthetic, practical, and effective way to help you progress in your learning.



# 06 Certificate

The **Postgraduate Certificate in Update on Ocular Surface and Cornea** guarantees you, in addition to the most thorough and up-to-date training, access to a Postgraduate Certificate certificate issued by **TECH Technological University**.



“

*Successfully complete this specialisation and receive your university degree without travel or laborious paperwork"*

This **Postgraduate Certificate in Update on Ocular Surface and Cornea** contains the most complete and up-to-date program on the market.

After the student has passed the assessments, they will receive their corresponding **Postgraduate Certificate** issued by **TECH Technological University** via tracked delivery\*.

The certificate issued by **TECH Technological University** will reflect the qualification obtained in the Postgraduate Certificate, and meets the requirements commonly demanded by labor exchanges, competitive examinations, and professional career evaluation committees.

Title: **Postgraduate Certificate in Update on Ocular Surface and Cornea**

Official N° of Hours: **200 h.**



\*Apostille Convention. In the event that the student wishes to have their paper certificate issued with a Hague Apostille, TECH EDUCATION will make the necessary arrangements to obtain it, at an additional cost.

future  
health confidence people  
education information tutors  
guarantee accreditation teaching  
institutions technology learning  
community commitment  
personalized service innovation  
knowledge present quality  
online tra  
velopment languages  
virtual classroom



## Postgraduate Certificate Update on Ocular Surface and Cornea

- » Modality: online
- » Duration: 6 weeks
- » Certificate: TECH Technological University
- » Dedication: 16h/week
- » Schedule: at your own pace
- » Exams: online

# Postgraduate Certificate

## Update on Ocular Surface and Cornea

