

# Postgraduate Certificate

## Update on Glaucoma





## Postgraduate Certificate Update on Glaucoma

- » Modality: online
- » Duration: 6 weeks
- » Certificate: TECH Technological University
- » Dedication: 16h/week
- » Schedule: at your own pace
- » Exams: online

Website: [www.techtute.com/us/medicine/postgraduate-certificate/update-glaucoma](http://www.techtute.com/us/medicine/postgraduate-certificate/update-glaucoma)

# Index

01

Introduction

---

*p. 4*

02

Objectives

---

*p. 8*

03

Course Management

---

*p. 12*

04

Structure and Content

---

*p. 16*

05

Methodology

---

*p. 20*

06

Certificate

---

*p. 28*

# 01

# Introduction

Advances in diagnostic and therapeutic procedures for glaucoma, as well as in other significant ophthalmologic pathologies, oblige specialists to continually update their knowledge. This program offers the opportunity to get up-to-date in a practical way using the latest educational technology, adapted to medical ophthalmology, so that you can combine it with your professional work.





“

*Increase your knowledge of the procedure for addressing glaucoma through this program, where you will find the best teaching material, high-definition images and real clinical cases. Learn about the latest advances in Diagnosis and Therapeutics techniques to provide quality care”.*

According to INE data, there are about 250 new cases of infant glaucoma in Spain every year. Although it is not a very high incidence, its significant consequences for vision from the first months of life mean that immediate diagnosis and surgical treatment are essential.

Early diagnosis and treatment, before the eye fully develops, is crucial so that ocular defects can be corrected and do not leave life-long consequences.

The aim of this Glaucoma Update Postgraduate Certificate is to update the specialist on the advances that are being made in addressing glaucoma, both in the diagnostic procedure and from a therapeutic point of view, using the latest scientific evidence.

This **Update on Glaucoma Postgraduate Certificate** comprises the most comprehensive and up-to-date scientific program on the market. The most important features of the Postgraduate Certificate are:

- ♦ Development of clinical cases presented by experts in eye surgery. The graphic, schematic, and eminently practical contents with which they are created contain clinical information that is indispensable for professional practice.
- ♦ Diagnostic and therapeutic innovations in the management of glaucoma patients.
- ♦ It uses practical exercises where learning can be improved through the self-evaluation process.
- ♦ Algorithm-based interactive learning system or decision making in glaucoma procedures in clinical situations.
- ♦ All of this will be complemented by theoretical lessons, questions to the expert, debate forums on controversial topics, and individual reflection assignments.
- ♦ Content that is accessible from any fixed or portable device with an Internet connection.



*Refresh your knowledge through the Update on Glaucoma Postgraduate Certificate".*

“

*This Postgraduate Certificate may be the best investment you can make in selecting an update program for two reasons: in addition to updating your knowledge on procedures for addressing glaucoma, you will obtain a Postgraduate Certificate issued by TECH Technological University”.*

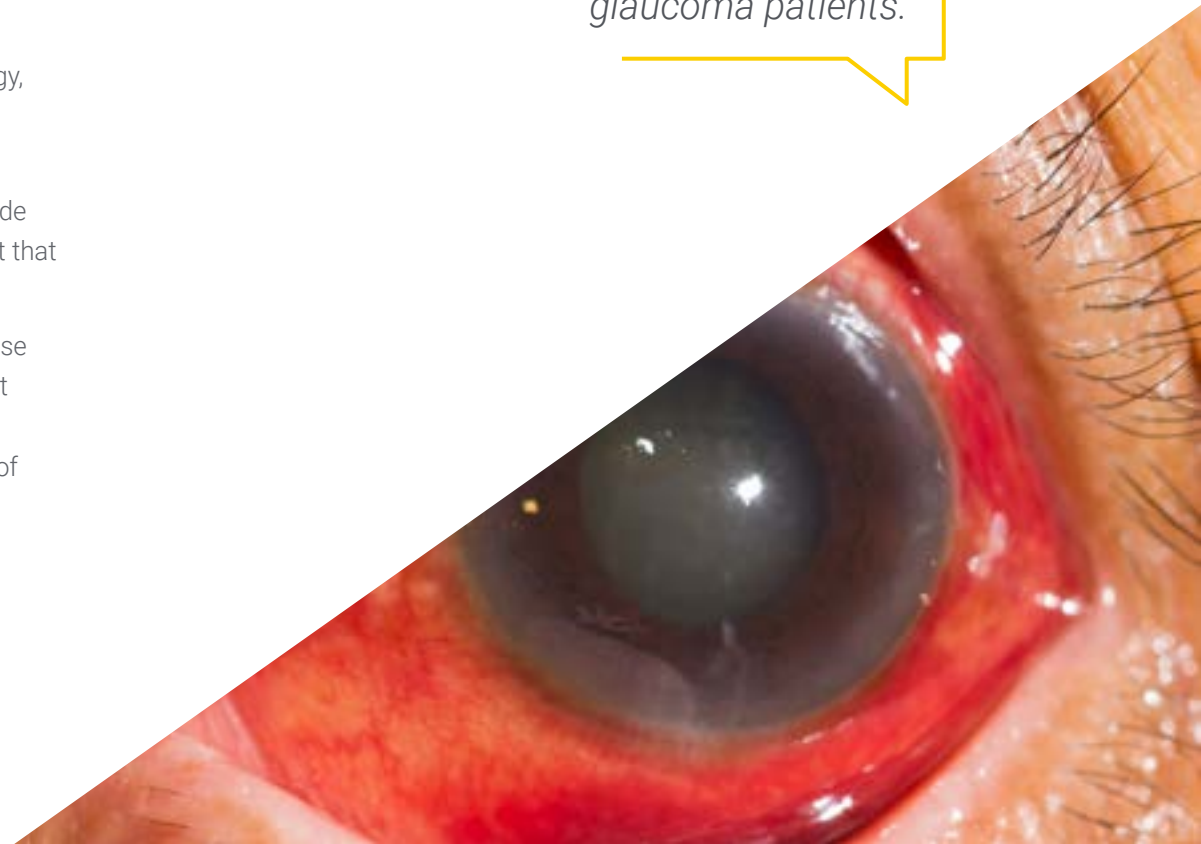
The teaching staff includes healthcare professionals from the field of ophthalmology, who bring their work experience to this training program, as well as renowned professionals from other specialties.

The multimedia content developed with the latest educational technology will provide the professional with situated and contextual learning, i.e., a simulated environment that will provide immersive training program to train in real situations.

Problem-Based Learning underpins the design of this program, and doctors must use it to try and solve the different professional practice situations that arise throughout the Postgraduate Certificate. To this end, you will be assisted by an innovative, interactive video system created by renowned and experienced experts in the field of ophthalmology who have extensive teaching experience.

*This program offers training in simulated environments, which provides an immersive learning experience designed to prepare you for real-life situations.*

*Take this opportunity to update your knowledge on the management of glaucoma patients.*



# 02 Objectives

The main objective of the program is the development of theoretical and practical learning, so that the physician can rigorously and practically master the care of Glaucoma patients.







“

*This update program will generate a sense of confidence when practising medicine, which will help you grow both personally and professionally”.*



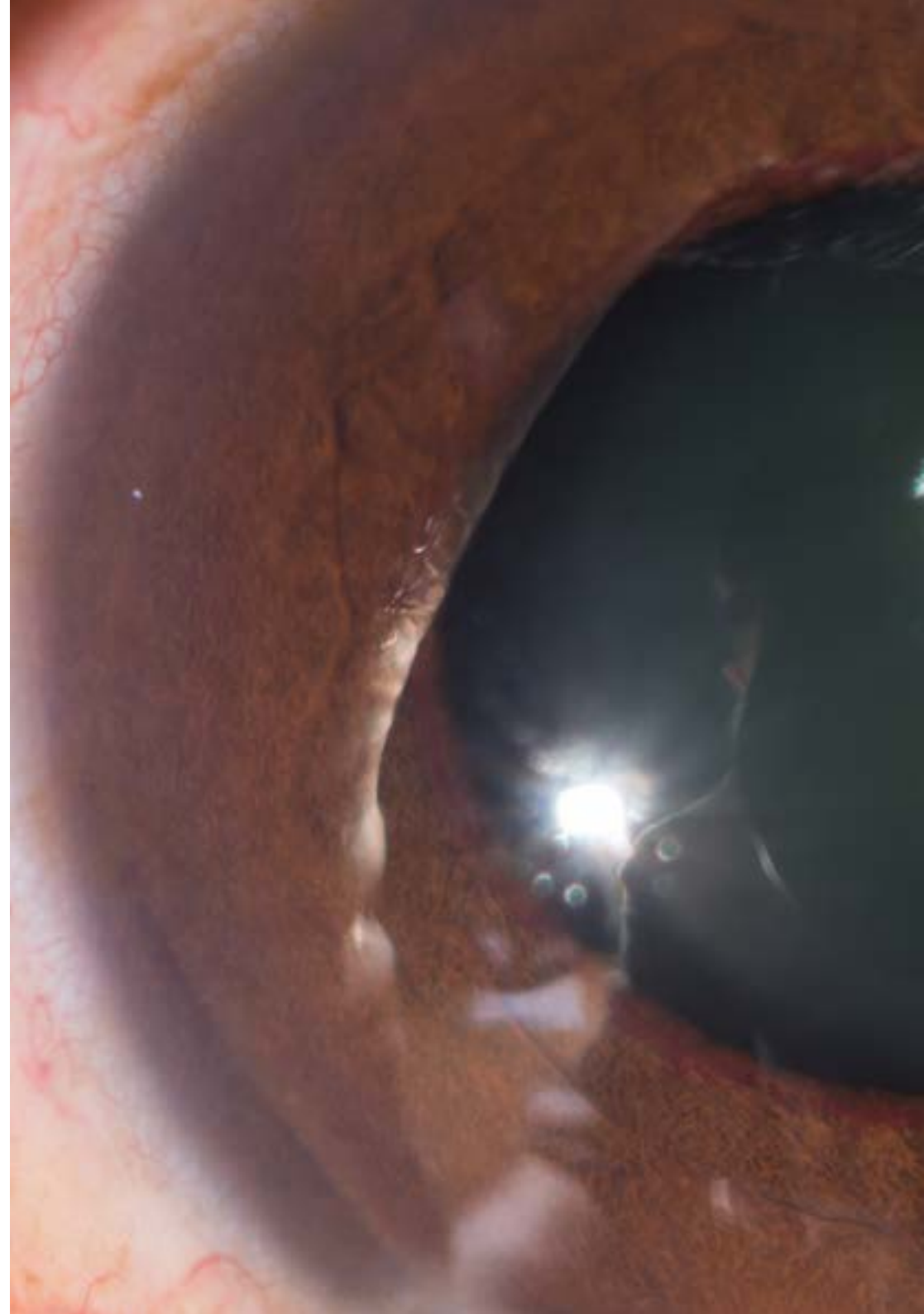
## General Objective

---

- Update specialists' knowledge and facilitate the acquisition of advanced specialized training in the diagnosis and latest advances in the treatment of glaucoma, so that patients can receive safe, quality treatment based on the latest scientific evidence.



*Make the most of the opportunity and get up to date on the latest developments in the management of glaucoma patients”.*





## Specific Objectives

---

- ◆ Describe the different diagnostic methods and techniques in glaucoma: intraocular pressure and pachymetry, campimetry and analysis of the papilla and nerve fiber layer.
- ◆ Establish the latest advances in the medical treatment of glaucoma.
- ◆ Describe in detail the technique of filtering surgery, valvular and cyclodestructive procedures.
- ◆ Define the types of laser and explain the different laser treatments.
- ◆ Explain the new perspectives for the future of glaucoma.

03

# Course Management

On its teaching staff, this program includes highly regarded health professionals in the field of ophthalmology, who bring their work experience this training program. In addition, renowned specialists, members of prestigious national and international scientific communities, are involved designing and preparing the program.





*Learn the latest advances in diagnostic and therapeutic procedures in Glaucoma from leading professionals".*

## Management



### Dr. Navea Tejerina, Amparo

- ♦ FISABIO-Ophthalmology Medical Director (FOM)
- ♦ Doctor of Medicine. Specialist in Ophthalmology.
- ♦ President of the FOM Teaching Commission. Head of the Retina Unit of the FOM, Head of the Ophthalmology Collection, FISABIO Biobank.
- ♦ Associate Professor in charge of Ophthalmology at UCH-CEU Medicine in Castellón and Valencia.
- ♦ Extensive experience in scientific publications, communications and presentations at conferences. Extensive experience in research work, projects, and thesis direction.
- ♦ Member of the Spanish Society of Ophthalmology (SEO), the American Academy of Ophthalmology (AAO) and the Association for Research in Vision and Ophthalmology (ARVO). Sircova. IP OftaRed

## Academic Coordination



### Dr. Ruiz Moreno, José María

- ♦ Professor of Ophthalmology at the Faculty of Medicine at the UCLM (University of Castilla La Mancha).
- ♦ Head of Service of the Puerta de Hierro Hospital Majadahonda
- ♦ Medical Director of the Vissum Ophthalmologic Corporation
- ♦ Coordinator and Professor of the Doctorate Program in "Health Sciences" at UCLM.
- ♦ President of the Spanish Society of Retina and Vitreous (SERV)
- ♦ Extensive experience in scientific publications, communications, and presentations at national and international conferences.
- ♦ Development of lines of research in: Age-Related Macular Degeneration (AMD) and Pathological Myopia (PM).
- ♦ Member of the Spanish Society of Ophthalmology (SEO), the American Academy of Ophthalmology (AAO) and the European Society of Retina Specialists (EURETINA). IP OftaRed

## Professors

### **Dr. Alcocer Yuste, Pablo**

- ◆ Degree in Medicine and Surgery
- ◆ Medical Specialist in Ophthalmology
- ◆ Glaucoma Specialist
- ◆ FISABIO Medical Ophthalmology. Valencia, Spain

### **Dr. Belda Sanchis, José**

- ◆ Degree in Medicine and Surgery
- ◆ Medical Specialist in Ophthalmology
- ◆ Clinical Chief of the Retina Clinical Unit
- ◆ University Hospital Complex, Albacete
- ◆ Head of the Ophthalmology Department at the Torrevieja University Hospital
- ◆ Glaucoma Department at OFTALICA.

### **Dr. Benítez del Castillo, Javier**

- ◆ Degree in Medicine and Surgery
- ◆ Medical Specialist in Ophthalmology
- ◆ El Puerto de Santa María and Jerez de la Frontera. Cádiz, Spain

### **Dr. Corsino Fernández-Vila, Pedro**

- ◆ Degree in Medicine and Surgery
- ◆ Medical Specialist in Ophthalmology
- ◆ Head of the Ophthalmology Department
- ◆ Pontevedra University Hospital. Galicia, Spain

### **Dr. Duch Tuesta, Susana**

- ◆ Degree in Medicine and Surgery
- ◆ Medical Specialist in Ophthalmology
- ◆ Specialist in Cataracts and Glaucoma

### **Dr. Güerri Monclús, Noemí**

- ◆ Degree in Medicine and Surgery
- ◆ Medical Specialist in Ophthalmology
- ◆ Specialist in Ophthalmology in Zaragoza, Spain

### **Dr. Lanzagorta Aresti, Aitor**

- ◆ Degree in Medicine and Surgery
- ◆ Medical Specialist in Ophthalmology
- ◆ Glaucoma Specialist
- ◆ FISABIO Medical Ophthalmology. Valencia, Spain

### **Dr. Schargel, Konrad**

- ◆ Degree in Medicine and Surgery
- ◆ Medical Specialist in Ophthalmology
- ◆ Central University of Venezuela. Venezuela

### **Dr. Urcola Carrera, Aritz**

- ◆ Degree in Medicine and Surgery
- ◆ Medical Specialist in Ophthalmology
- ◆ Anterior Segment Surgery Specialist, Glaucoma Treatment.
- ◆ San Sebastián, Spain

# 04

# Structure and Content

The structure of the contents has been designed by a team of professionals who recognise the implications of medical training in Ophthalmology, are aware of the relevance of current training to treat patients with vision problems, and are committed to quality teaching using new educational technologies.







“

*This Update on Glaucoma Postgraduate Certificate comprises the most comprehensive and up-to-date scientific program on the market”.*

## Module 1. Glaucoma Update

- 1.1. Diagnosis I: Intraocular Pressure and Pachymetry.
- 1.2. Diagnosis II: Angle Study: Gonioscopy and Other Methods.
- 1.3. Diagnosis III: Campimetry.
- 1.4. Diagnosis IV: Analysis of the Papilla and the Nerve Fiber Layer.
- 1.5. Pathophysiology and Classification of Glaucoma.
- 1.6. Treatment I: Medical.
- 1.7. Treatment II: Laser.
- 1.8. Treatment III: Filtering Surgery.
- 1.9. Treatment IV: Valvular Surgery and Cyclodestructive Procedures.
- 1.10. New Perspectives in Glaucoma: The Future.





“

*A unique, key, and decisive training experience to boost your professional development”.*

05

# Methodology

This training program provides you with a different way of learning. Our methodology uses a cyclical learning approach: ***Re-learning***.

This teaching system is used in the most prestigious medical schools in the world, and major publications such as the ***New England Journal of Medicine*** have considered it to be one of the most effective.



“

*Discover Re-learning, a system that abandons conventional linear learning, to take you through cyclical teaching systems: a way of learning that has proven to be extremely effective, especially in subjects that require memorization".*

## At TECH we use the Case Method

In a given situation, what would you do? Throughout the program you will be presented with multiple simulated clinical cases based on real patients, where you will have to investigate, establish hypotheses and, finally, resolve the situation. There is abundant scientific evidence on the effectiveness of the method. Specialists learn better, faster, and more sustainably over time.

*With TECH you can experience a way of learning that is shaking the foundations of traditional universities around the world.*



According to Dr. Gervas, the clinical case is the annotated presentation of a patient, or group of patients, which becomes a "case", an example or model that illustrates some peculiar clinical component, either because of its teaching potential or because of its uniqueness or rarity. It is essential that the case is based on current professional life, trying to recreate the real conditions in professional medical practice.

“

*Did you know that this method was developed in 1912 at Harvard for law students? The case method consisted of presenting students with real-life, complex situations for them to make decisions and justify their decisions on how to solve them. In 1924, Harvard adopted it as a standard teaching method”.*

The effectiveness of the method is justified by four fundamental achievements:

1. Students who follow this method not only grasp concepts, but also develop their mental capacity by evaluating real situations and applying their knowledge.
2. The learning process has a clear focus on practical skills that allow the student to better integrate into the real world.
3. Ideas and concepts are understood more efficiently, given that the example situations are based on real-life.
4. Students like to feel that the effort they put into their studies is worthwhile. This then translates into a greater interest in learning and more time dedicated to working on the course.



## Re-Learning Methodology

At TECH we enhance the Harvard case method with the best 100% online teaching methodology available: Re-learning.

Our University is the first in the world to combine the study of clinical cases with a 100% online learning system based on repetition, combining a minimum of 8 different elements in each lesson, which represent a real revolution with respect to simply studying and analyzing cases.



*The physician will learn through real cases and by solving complex situations in simulated learning environments. These simulations are developed using state-of-the-art software to facilitate immersive learning.*



At the forefront of world teaching, the Re-learning method has managed to improve the overall satisfaction levels of professionals who complete their studies, with respect to the quality indicators of the best Spanish-speaking online university (Columbia University).

With this methodology we have trained more than 250,000 physicians with unprecedented success, in all clinical specialties regardless of the surgical load. All this in a highly demanding environment, where the students have a strong socio-economic profile and an average age of 43.5 years.

*Re-learning will allow you to learn with less effort and better performance, involving you more in your specialization, developing a critical mindset, defending arguments, and contrasting opinions: a direct equation to success.*

In our program, learning is not a linear process, but rather a spiral (we learn, unlearn, forget, and re-learn). Therefore, we combine each of these elements concentrically.

The overall score obtained by our learning system is 8.01, according to the highest international standards.



In this program you will have access to the best educational material, prepared with you in mind:



#### Study Material

All teaching material is produced by the specialists who teach the course, specifically for the course, so that the teaching content is highly specific and precise.

This content is then adapted in an audiovisual format that will create our way of working online, with the latest techniques that allow us to offer you high quality in all of the material that we provide you with.



#### Latest Techniques and Procedures on Video

We introduce you to the latest techniques, to the latest educational advances, to the forefront of current medical techniques. All this, in first person, with the maximum rigor, explained and detailed for your assimilation and understanding. And best of all, you can watch them as many times as you want.



#### Interactive Summaries

We present the contents attractively and dynamically in multimedia lessons that include audio, videos, images, diagrams, and concept maps in order to reinforce knowledge.

This unique multimedia content presentation training system was awarded by Microsoft as a "European Success Story".



#### Additional Reading

Recent articles, consensus documents, international guides. in our virtual library you will have access to everything you need to complete your training.





**Expert-Led Case Studies and Case Analysis**

Effective learning ought to be contextual. Therefore, we will present you with real case developments in which the expert will guide you through focusing on and solving the different situations: a clear and direct way to achieve the highest degree of understanding.



**Testing & Re-testing**

We periodically evaluate and re-evaluate your knowledge throughout the program, through assessment and self-assessment activities and exercises: so that you can see how you are achieving your goals.



**Classes**

There is scientific evidence suggesting that observing third-party experts can be useful.

Learning from an expert strengthens knowledge and memory, and generates confidence in our future difficult decisions.



**Quick Action Guides**

We offer you the most relevant contents of the course in the form of worksheets or quick action guides. A synthetic, practical, and effective way to help you progress in your learning.



# 06 Certificate

The **Update on Glaucoma Postgraduate Certificate** guarantees you, in addition to the most rigorous and updated training, access to a Postgraduate Certificate issued by **TECH Technological University**.



“

*Successfully complete this training program and receive your university qualification without travel or laborious paperwork”.*

This **Update on Glaucoma Postgraduate Certificate** comprises the most comprehensive and up-to-date scientific program on the market.

After students have passed the assessments, they will receive by certified mail their **Postgraduate Certificate** issued by **TECH Technological University**.

The diploma issued by **TECH Technological University** will reflect the qualification obtained through the course program, and will meet the requirements commonly demanded by labor exchanges, competitive examinations and professionals from career evaluation committees.

**Title: Postgraduate Certificate Update on Glaucoma**

**Official Number of Hours: 200**



future

health

confidence people

education information tutors

guarantee accreditation teaching

institutions technology learning

community commitment

personalized service innovation

knowledge present quality

online training

development languages

virtual classroom

**tech** technological university

## Postgraduate Certificate Update on Glaucoma

- » Modality: online
- » Duration: 6 weeks
- » Certificate: TECH Technological University
- » Dedication: 16h/week
- » Schedule: at your own pace
- » Exams: online

# Postgraduate Certificate

## Update on Glaucoma

