

Postgraduate Certificate

Scientific Advances in the Study of Emotion



Postgraduate Certificate Scientific Advances in the Study of Emotion

- » Modality: online
- » Duration: 6 weeks
- » Certificate: TECH Global University
- » Accreditation: 6 ECTS
- » Schedule: at your own pace
- » Exams: online

Website: www.techtute.com/us/medicine/postgraduate-certificate/scientific-advances-study-emotion

Index

01

Introduction

p. 4

02

Objectives

p. 8

03

Course Management

p. 12

04

Structure and Content

p. 18

05

Study Methodology

p. 22

06

Certificate

p. 32

01

Introduction

In order to meet the current challenges of wellness therapy, the professional must have the best tools available. Therefore, in recent years, numerous scientific advances have been developed in the study of emotion. One of the most outstanding is Psychotherapy, which currently has a variety of functionalities. This program, therefore, offers the professional the opportunity to get up to date in the study of emotion. In this way, you will be able to help the patient to grow emotionally and lead a fuller life. All this, through a learning system composed of a 100% online phase.



“

The best way to assimilate new scientific advances is through practice, so this program is perfect for the physiotherapist who is looking for a complete and immediate update”

There is now a scientific basis to support the efficacy of many studies of emotion. The place that Psychotherapy should occupy in emotion should be that for which it has demonstrated its usefulness and safety. This program offers a current view of emotion, including the latest contributions and advances. The contents are guaranteed by the faculty involved in the Postgraduate Certificate, since in one way or another they all practice in the field of Psychology and Psychotherapy or are related to it.

The graduate will learn based on the experience of the teachers and will experience the latest scientific advances based on emotion, which results in the specialization of the student to be more effective and accurate. In this way, TECH ensures, from the professional and academic side, the necessary training to adequately face their future in this field.

Also, being a fully online program, the graduate is not conditioned by fixed schedules or the need to move to another physical location, but can access a rich content that will help you reach the elite of Psychotherapy based on emotion at any time of day, combining, at your own pace, your work and personal life with the academic. All this together with access to a Masterclass that will be given by an international expert in the area of Scientific Advances in the Study of Emotion.

This **Postgraduate Certificate in Scientific Advances in the Study of Emotion** contains the most complete and up-to-date scientific program on the market. The most important features include:

- ♦ The development of case studies presented by experts in emotion-based group psychotherapy
- ♦ The graphic, schematic and eminently practical contents with which it is conceived gather scientific and practical information on those disciplines that are indispensable for professional practice
- ♦ Practical exercises where self-assessment can be used to improve learning
- ♦ Its special emphasis on innovative methodologies
- ♦ Theoretical lessons, questions to the expert, debate forums on controversial topics, and individual reflection assignments
- ♦ Content that is accessible from any fixed or portable device with an Internet connection



Progress professionally thanks to this Postgraduate Certificate, with its innovative contents, international Masterclass and prestigious faculty”

“

This program is an excellent opportunity to develop yourself both theoretically and practically in the latest scientific advances and the newest techniques in wellness therapy”

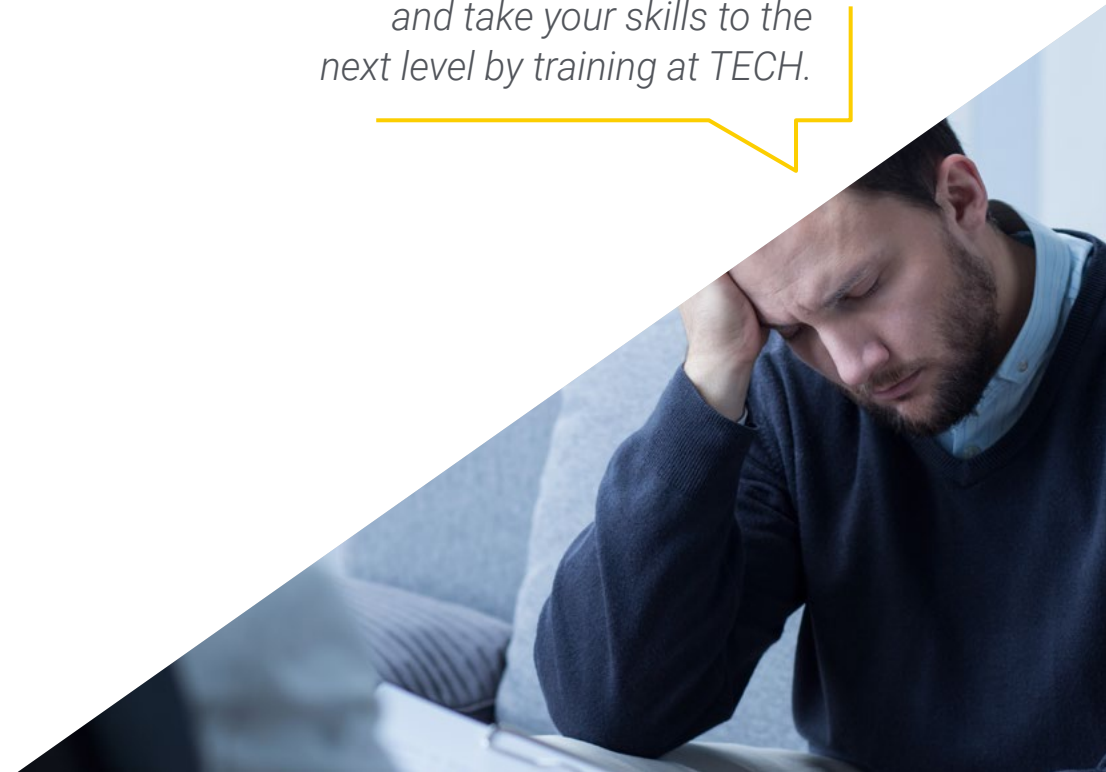
The program's teaching staff includes professionals from the industry who contribute their work experience to this program, as well as renowned specialists from leading societies and prestigious universities.

The multimedia content, developed with the latest educational technology, will provide the professional with situated and contextual learning, i.e., a simulated environment that will provide immersive education programmed to learn in real situations.

This program is designed around Problem-Based Learning, whereby the professional must try to solve the different professional practice situations that arise during the course. For this purpose, students will be assisted by an innovative interactive video system created by renowned experts in the field of educational coaching with extensive experience.

The skills you will obtain in this program will allow you to stand out at a professional level, since you will increase your prestige as a wellness therapist immediately.

Study, learn from the best and take your skills to the next level by training at TECH.



02

Objectives

The design of this program in Scientific Advances in the Study of Emotion is intended to help graduates to opt for new job opportunities within the wellness therapy sector. Therefore, students can count on a theoretical approach through which to understand the scientific basis of each of the diagnostic plans used in the specialty. In this way, they will improve their skills and abilities to care for their patients.



“

Study the latest Scientific Advances in the Study of Emotion, which will help you to treat the patient effectively in each session”



General Objectives

- ♦ Provide the student with the necessary knowledge to be able to offer real emotional wellness to their patients
- ♦ Get trained to generate a good therapist – patient bond
- ♦ Know and understand the functioning of the human being and the importance of emotional management in it
- ♦ Discover the different therapies and models based on emotion
- ♦ Develop intervention protocols adapted to the patient and reason for consultation
- ♦ Master the therapy from a multidisciplinary and biopsychosocial perspective, in order to be able to control the greatest number of variables that will influence the patient's discomfort or health





Specific Objectives

- Learn about the role of emotion and its historical evolution
- Know the scientific research related to emotions
- Know what a basic emotion is and its function
- Understand how emotion affects different cognitive processes



Thanks to this program you will be able to specialize in Physiotherapy in Geriatrics and learn about the latest advances applied in the best clinics"

03

Course Management

The teaching staff of this program includes a select group of professionals dedicated to Psychology and Psychotherapy. Therefore, they are more than qualified to guide the theoretical modality on this course. They have also participated in the design and structure of the program to meet the expectations of the students and help them in their professional growth.





“

You will be assisted at all times by a select group of professionals who will provide you with all their work experience”

International Guest Director

Dr. Claudia M. Christ is an eminent international expert with a distinguished track record in the field of Health and Emotional Wellness. Throughout her career, she has been a key figure in the promotion of innovative Psychotherapies, specializing in personal management, coaching and the development of interpersonal projects to improve the quality of life of her patients.

In addition, she founded and has directed the Akademie an den Quellen, from where she implements her own methods for the control of Burnout, promoting respectful work environments, where resilience and organizational development prevail. At the same time, she is accredited as an Executive Coach by the International Coach Federation and has been trained in Individual Crisis Assistance and Group Crisis Intervention at the University of Maryland.

On the other hand, Dr. Christ is noted for her continuous collaboration with the academic environment. For example, she is a permanent professor at the Frankfurt University of Applied Sciences and the Steinbeis University in Berlin. She is also a supervisor and member of the advisory board of the Wiesbaden (WIAP) and Cologne-Bonn (KBAP) Academies of Psychotherapies. She has also served as head of the Asklepios Kliniken, where she has implemented integrated care areas throughout the Asklepios Group.

In this way, her dedication and professional excellence have been recognized through numerous awards, including the prestigious prize awarded by the Landesärztekammer Hessen (Hessen State Medical Association), for her outstanding commitment in the field of Psychosomatic Primary Care. Likewise, her involvement in associations and her contribution to medical literature have consolidated her position as leader in her field, as well as an advocate for the psychological and physical well-being of her patients.



Dr. Christ, Claudia M.

- ♦ Chief Physician, Virchow Campus of Charité Berlin University Hospital, Berlin, Germany
- ♦ Director and Founder of the Akademie an den Quellen
- ♦ Former Medical Director of Central Services at Asklepios Kliniken GmbH, Königstein
- ♦ Psychotherapist
- ♦ Professional Coach from the International Coaching Federation (ICF)
- ♦ Doctor of Clinical Pharmacology at the Benjamin Franklin University Hospital
- ♦ Master's Degree in Public Health at the Technical University of Berlin
- ♦ Medical Degree from the Free University of Berlin
- ♦ Award of the Landesärztekammer Hessen (Hessian State Medical Association) for "Outstanding Commitment" in the field of Psychosomatic Primary Care
- ♦ Member of German Society of Pain Medicine, German Society of Cardiology, German Society for Psychotherapy based on Depth Psychology, World Association of Positive and Transcultural Psychotherapy Associations and Society for Positive and Transcultural Psychotherapy



Thanks to TECH you will be able to learn with the best professionals in the world"

Management



Dr. González Agüero, Mónica

- ♦ Psychologist in charge of the Department of Child and Adolescent Psychology at Quirónsalud Marbella Hospital and at Avatar Psychologists
- ♦ Psychologist and Teacher at the European Institute of Limited Time Psychotherapies (IEPTL)
- ♦ Degree in Psychology from the National University of Distance Education (UNED)

Professors

Dr. Aguado Romo, Roberto

- ♦ President of the European Institute of Time-Limited Psychotherapy
- ♦ Psychologist in private practice
- ♦ Researcher in Time Limited Psychotherapy
- ♦ Guidance team coordinator for many educational centers
- ♦ Author of several books on Psychology
- ♦ Communicator and expert in Psychology in the media
- ♦ University courses and studies teacher
- ♦ Master's Degree in Clinical and Health Psychology
- ♦ Specialist in Clinical Psychology
- ♦ Selective Dissociation Targeting Specialist



“

Take the opportunity to learn about the latest advances in this field in order to apply it to your daily practice"

04

Structure and Content

The syllabus of this program delves into issues such as the different classifications of emotions. To this end, it delves into fear, anger, guilt, disgust and sadness, among other feelings and moods. In this way, the curriculum includes all the aspects that a specialist in emotion should know. In this sense, the student will be able to evaluate, diagnose and provide treatment to patients who come to their office.





“

The best way to complement your professionalization in emotion studies is to have a program that adapts to the scientific advances of your profession”

Module 1. Emotion

- 1.1. What is an Emotion
 - 1.1.1. Definition
 - 1.1.2. Difference Between Emotion, Feeling and State of Mind
 - 1.1.3. Function, Are there Positive and Negative Emotions?
- 1.2. Different Classifications of Emotions
- 1.3. Fear
 - 1.3.1. Function
 - 1.3.2. Platform for Action
 - 1.3.3. Neurological Structures
 - 1.3.4. Associated Biochemistry
- 1.4. Rabies
 - 1.4.1. Function
 - 1.4.2. Platform for Action
 - 1.4.3. Neurological Structures
 - 1.4.4. Associated Biochemistry
- 1.5. Blame
 - 1.5.1. Function
 - 1.5.2. Platform for Action
 - 1.5.3. Neurological Structures
 - 1.5.4. Associated Biochemistry
- 1.6. Disgust
 - 1.6.1. Function
 - 1.6.2. Platform for Action
 - 1.6.3. Neurological Structures
 - 1.6.4. Associated Biochemistry
- 1.7. Sadness
- 1.8. Function
 - 1.8.1. Platform for Action
 - 1.8.2. Neurological Structures
 - 1.8.3. Associated Biochemistry





- 1.9. Surprise
 - 1.9.1. Function
 - 1.9.2. Platform for Action
 - 1.9.3. Neurological Structures
 - 1.9.4. Associated Biochemistry
- 1.10. Curiosity
 - 1.10.1. Function
 - 1.10.2. Platform for Action
 - 1.10.3. Neurological Structures
 - 1.10.4. Associated Biochemistry
- 1.11. Security
 - 1.11.1. Function
 - 1.11.2. Platform for Action
 - 1.11.3. Neurological Structures
 - 1.11.4. Associated Biochemistry
- 1.12. Admiration
 - 1.12.1. Function
 - 1.12.2. Platform for Action
 - 1.12.3. Neurological Structures
 - 1.12.4. Associated Biochemistry
- 1.13. Joy
 - 1.13.1. Function
 - 1.13.2. Platform for Action
 - 1.13.3. Neurological Structures
 - 1.13.4. Associated Biochemistry
- 1.14. Influence of Emotion in Cognitive Processes
- 1.15. Brain and Emotion in the Child
- 1.16. Brain and Emotion in the Adolescent

05

Study Methodology

TECH is the world's first university to combine the **case study** methodology with **Relearning**, a 100% online learning system based on guided repetition.

This disruptive pedagogical strategy has been conceived to offer professionals the opportunity to update their knowledge and develop their skills in an intensive and rigorous way. A learning model that places students at the center of the educational process giving them the leading role, adapting to their needs and leaving aside more conventional methodologies.



“

TECH will prepare you to face new challenges in uncertain environments and achieve success in your career”

The student: the priority of all TECH programs

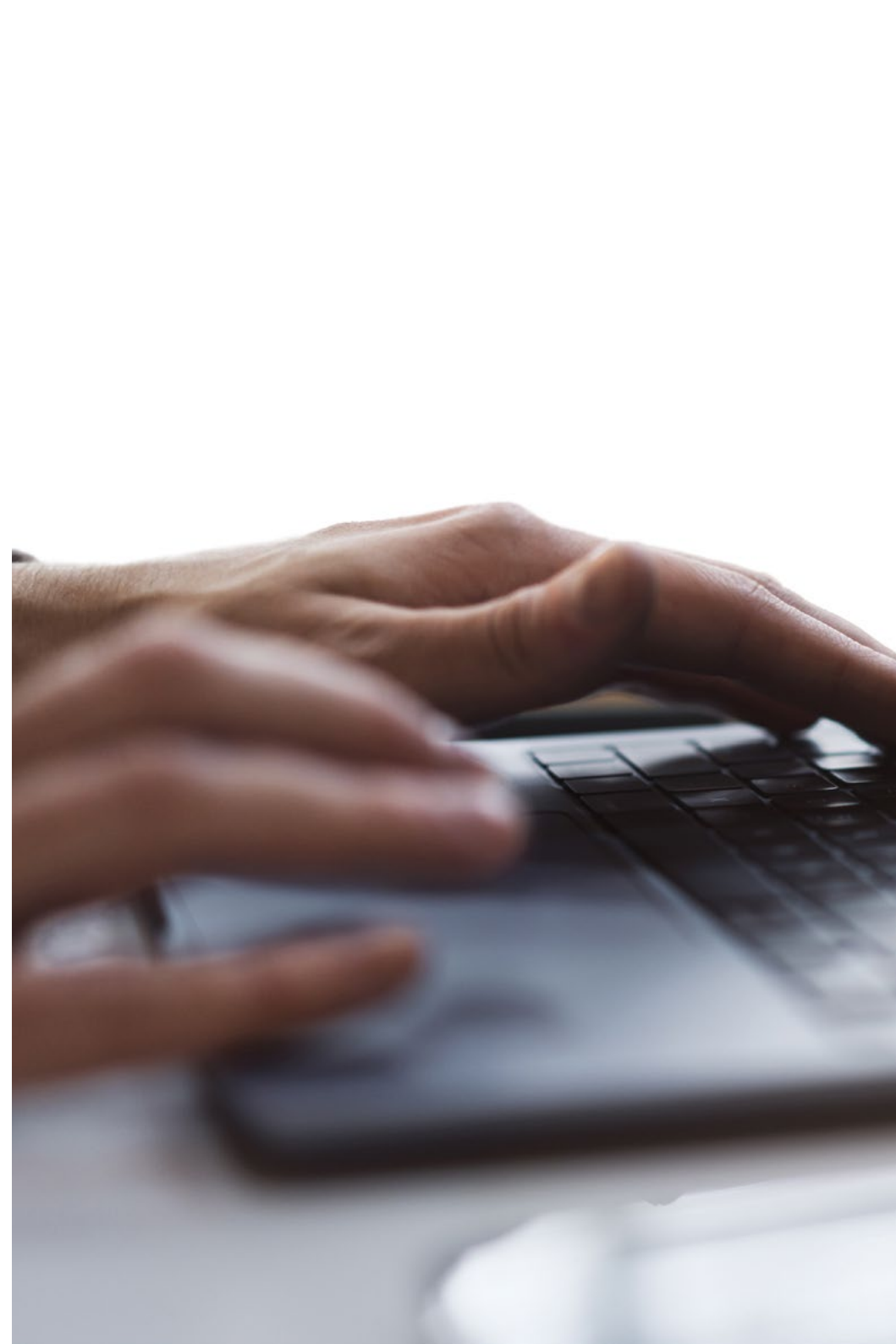
In TECH's study methodology, the student is the main protagonist.

The teaching tools of each program have been selected taking into account the demands of time, availability and academic rigor that, today, not only students demand but also the most competitive positions in the market.

With TECH's asynchronous educational model, it is students who choose the time they dedicate to study, how they decide to establish their routines, and all this from the comfort of the electronic device of their choice. The student will not have to participate in live classes, which in many cases they will not be able to attend. The learning activities will be done when it is convenient for them. They can always decide when and from where they want to study.

“

*At TECH you will NOT have live classes
(which you might not be able to attend)”*



The most comprehensive study plans at the international level

TECH is distinguished by offering the most complete academic itineraries on the university scene. This comprehensiveness is achieved through the creation of syllabi that not only cover the essential knowledge, but also the most recent innovations in each area.

By being constantly up to date, these programs allow students to keep up with market changes and acquire the skills most valued by employers. In this way, those who complete their studies at TECH receive a comprehensive education that provides them with a notable competitive advantage to further their careers.

And what's more, they will be able to do so from any device, pc, tablet or smartphone.

“*TECH's model is asynchronous, so it allows you to study with your pc, tablet or your smartphone wherever you want, whenever you want and for as long as you want*”

Case Studies and Case Method

The case method has been the learning system most used by the world's best business schools. Developed in 1912 so that law students would not only learn the law based on theoretical content, its function was also to present them with real complex situations. In this way, they could make informed decisions and value judgments about how to resolve them. In 1924, Harvard adopted it as a standard teaching method.

With this teaching model, it is students themselves who build their professional competence through strategies such as Learning by Doing or Design Thinking, used by other renowned institutions such as Yale or Stanford.

This action-oriented method will be applied throughout the entire academic itinerary that the student undertakes with TECH. Students will be confronted with multiple real-life situations and will have to integrate knowledge, research, discuss and defend their ideas and decisions. All this with the premise of answering the question of how they would act when facing specific events of complexity in their daily work.



Relearning Methodology

At TECH, case studies are enhanced with the best 100% online teaching method: Relearning.

This method breaks with traditional teaching techniques to put the student at the center of the equation, providing the best content in different formats. In this way, it manages to review and reiterate the key concepts of each subject and learn to apply them in a real context.

In the same line, and according to multiple scientific researches, reiteration is the best way to learn. For this reason, TECH offers between 8 and 16 repetitions of each key concept within the same lesson, presented in a different way, with the objective of ensuring that the knowledge is completely consolidated during the study process.

Relearning will allow you to learn with less effort and better performance, involving you more in your specialization, developing a critical mindset, defending arguments, and contrasting opinions: a direct equation to success.



A 100% online Virtual Campus with the best teaching resources

In order to apply its methodology effectively, TECH focuses on providing graduates with teaching materials in different formats: texts, interactive videos, illustrations and knowledge maps, among others. All of them are designed by qualified teachers who focus their work on combining real cases with the resolution of complex situations through simulation, the study of contexts applied to each professional career and learning based on repetition, through audios, presentations, animations, images, etc.

The latest scientific evidence in the field of Neuroscience points to the importance of taking into account the place and context where the content is accessed before starting a new learning process. Being able to adjust these variables in a personalized way helps people to remember and store knowledge in the hippocampus to retain it in the long term. This is a model called Neurocognitive context-dependent e-learning that is consciously applied in this university qualification.

In order to facilitate tutor-student contact as much as possible, you will have a wide range of communication possibilities, both in real time and delayed (internal messaging, telephone answering service, email contact with the technical secretary, chat and videoconferences).

Likewise, this very complete Virtual Campus will allow TECH students to organize their study schedules according to their personal availability or work obligations. In this way, they will have global control of the academic content and teaching tools, based on their fast-paced professional update.



The online study mode of this program will allow you to organize your time and learning pace, adapting it to your schedule”

The effectiveness of the method is justified by four fundamental achievements:

1. Students who follow this method not only achieve the assimilation of concepts, but also a development of their mental capacity, through exercises that assess real situations and the application of knowledge.
2. Learning is solidly translated into practical skills that allow the student to better integrate into the real world.
3. Ideas and concepts are understood more efficiently, given that the example situations are based on real-life.
4. Students like to feel that the effort they put into their studies is worthwhile. This then translates into a greater interest in learning and more time dedicated to working on the course.

The university methodology top-rated by its students

The results of this innovative teaching model can be seen in the overall satisfaction levels of TECH graduates.

The students' assessment of the quality of teaching, quality of materials, course structure and objectives is excellent. Not surprisingly, the institution became the best rated university by its students on the Trustpilot review platform, obtaining a 4.9 out of 5.

Access the study contents from any device with an Internet connection (computer, tablet, smartphone) thanks to the fact that TECH is at the forefront of technology and teaching.

You will be able to learn with the advantages that come with having access to simulated learning environments and the learning by observation approach, that is, Learning from an expert.



As such, the best educational materials, thoroughly prepared, will be available in this program:



Study Material

All teaching material is produced by the specialists who teach the course, specifically for the course, so that the teaching content is highly specific and precise.

This content is then adapted in an audiovisual format that will create our way of working online, with the latest techniques that allow us to offer you high quality in all of the material that we provide you with.



Practicing Skills and Abilities

You will carry out activities to develop specific competencies and skills in each thematic field. Exercises and activities to acquire and develop the skills and abilities that a specialist needs to develop within the framework of the globalization we live in.



Interactive Summaries

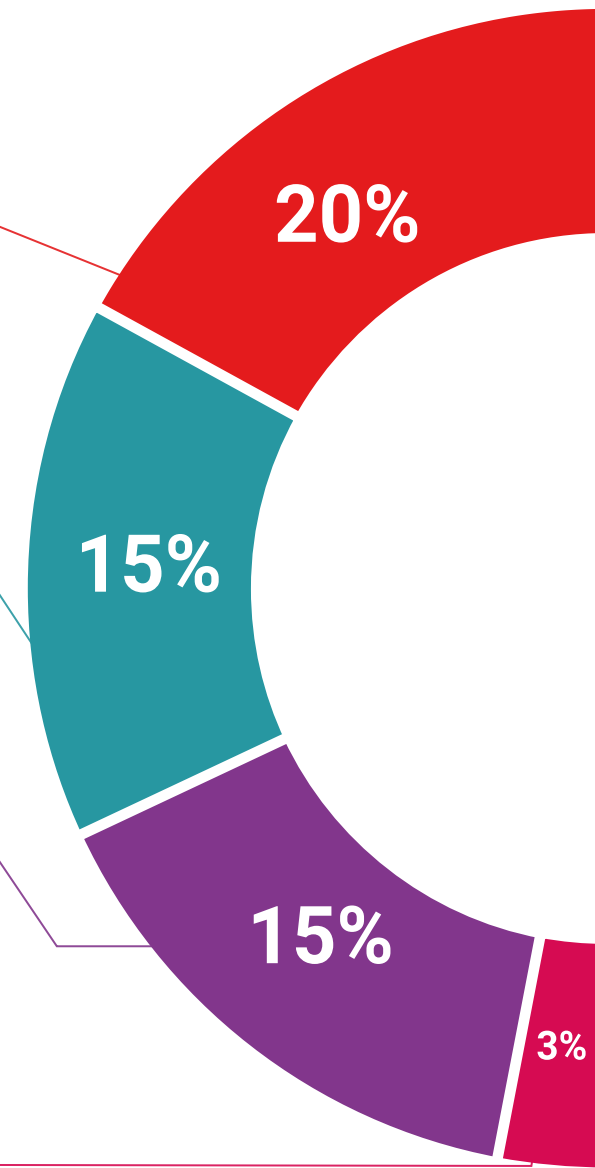
We present the contents attractively and dynamically in multimedia lessons that include audio, videos, images, diagrams, and concept maps in order to reinforce knowledge.

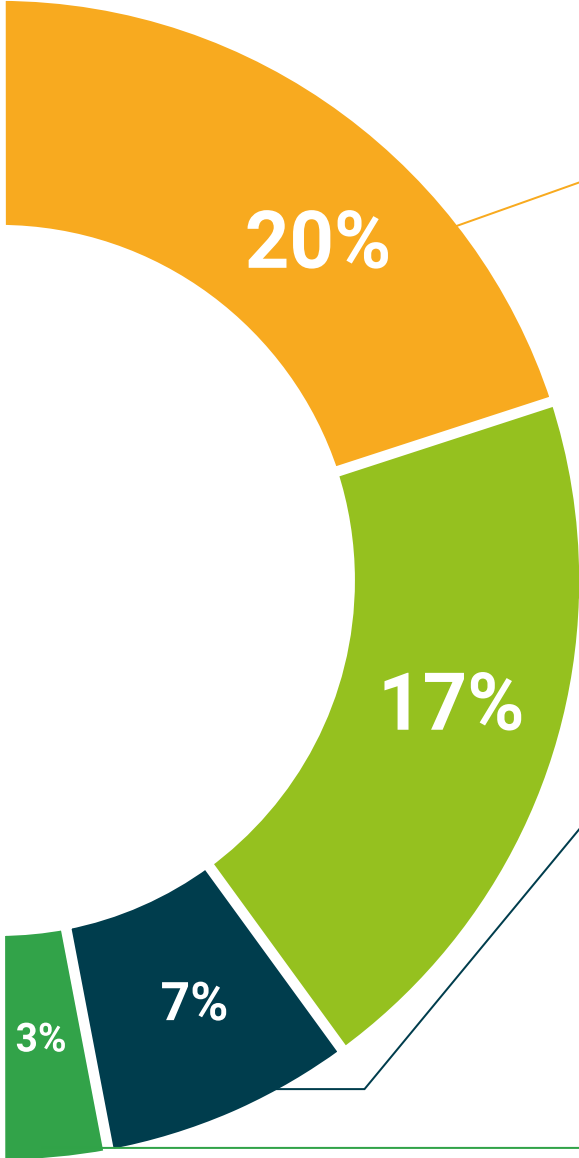
This exclusive educational system for presenting multimedia content was awarded by Microsoft as a "European Success Story".



Additional Reading

Recent articles, consensus documents, international guides... In our virtual library you will have access to everything you need to complete your education.





Case Studies

Students will complete a selection of the best case studies in the field. Cases that are presented, analyzed, and supervised by the best specialists in the world.



Testing & Retesting

We periodically assess and re-assess your knowledge throughout the program. We do this on 3 of the 4 levels of Miller's Pyramid.



Classes

There is scientific evidence suggesting that observing third-party experts can be useful.
Learning from an expert strengthens knowledge and memory, and generates confidence for future difficult decisions.



Quick Action Guides

TECH offers the most relevant contents of the course in the form of worksheets or quick action guides. A synthetic, practical and effective way to help students progress in their learning.



06 Certificate

The Postgraduate Certificate in Scientific Advances in the Study of Emotion guarantees, in addition to the most accurate and up-to-date education, access to a Postgraduate Certificate issued by TECH Global University.



“

*Successfully complete this program
and receive your university qualification
without having to travel or fill out
laborious paperwork”*

This private qualification will allow you to obtain a **Postgraduate Certificate in Scientific Advances in the Study of Emotion** endorsed by **TECH Global University**, the world's largest online university.

TECH Global University, is an official European University publicly recognized by the Government of Andorra ([official bulletin](#)). Andorra is part of the European Higher Education Area (EHEA) since 2003. The EHEA is an initiative promoted by the European Union that aims to organize the international training framework and harmonize the higher education systems of the member countries of this space. The project promotes common values, the implementation of collaborative tools and strengthening its quality assurance mechanisms to enhance collaboration and mobility among students, researchers and academics.

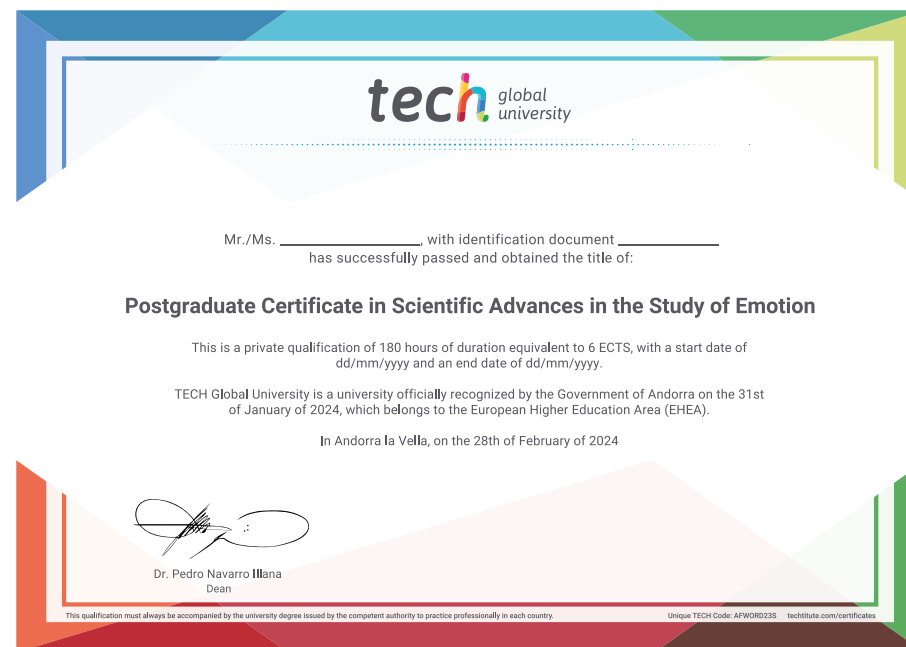
This **TECH Global University private qualification**, is a European program of continuing education and professional updating that guarantees the acquisition of competencies in its area of knowledge, providing a high curricular value to the student who completes the program.

Title: **Postgraduate Certificate in Scientific Advances in the Study of Emotion**

Modality: **online**

Duration: **6 weeks**

Accreditation: **6 ECTS**



*Apostille Convention. In the event that the student wishes to have their paper diploma issued with an apostille, TECH Global University will make the necessary arrangements to obtain it, at an additional cost.



Postgraduate Certificate
Scientific Advances in the
Study of Emotion

- » Modality: online
- » Duration: 6 weeks
- » Certificate: TECH Global University
- » Accreditation: 6 ECTS
- » Schedule: at your own pace
- » Exams: online

Postgraduate Certificate

Scientific Advances in the Study of Emotion