

# Postgraduate Certificate Radiology for Oncological Diagnosis





## Postgraduate Certificate Radiology for Oncological Diagnosis

- » Modality: online
- » Duration: 6 weeks
- » Certificate: TECH Global University
- » Credits: 7 ECTS
- » Schedule: at your own pace
- » Exams: online

Website: [www.techtute.com/us/medicine/postgraduate-certificate/postgraduate-certificate-radiology-oncological-diagnosis](http://www.techtute.com/us/medicine/postgraduate-certificate/postgraduate-certificate-radiology-oncological-diagnosis)

# Index

01

Introduction

---

*p. 4*

02

Objectives

---

*p. 8*

03

Course Management

---

*p. 12*

04

Structure and Content

---

*p. 18*

05

Methodology

---

*p. 22*

06

Certificate

---

*p. 30*

# 01

# Introduction

Radiological techniques play a fundamental role both in the initial diagnosis and in the final staging of oncologic disease. Radiology is key in the diagnosis of more than 85% of diseases. In the case of breast cancer, mammography is the only technique that has been shown to decrease cancer mortality, and it remains the technique of choice in patients over 40 years of age, while ultrasound is the initial test in patients under that age. Thus, it is necessary to continue with research and for specialists to update their information with courses such as these.



“

*Radiology plays an important role in the diagnosis of oncologic diseases”*

Cancer is considered a heterogeneous and multifocal disease, with unique and specific characteristics in each patient. In addition, we have new therapies that can be specifically directed towards specific targets in different tumors. In this scenario, oncologic imaging must "phenotype" this diversity of cancer, be able to study changes with different treatments and even predict which tumors are likely to receive one treatment or another. To this end, we now have different modalities of imaging techniques that allow us to study both the structure and function (physiology) of cancer, and we can generate quantitative biomarkers that allow us to objectify this information.

During the development of the modules, we will review the most important aspects from the radiological point of view for the diagnosis and staging of the main tumors for each organ, as well as those radiological systems for the follow-up of the disease.

Thus, this online Postgraduate Certificate in Radiology for Oncological Diagnosis offers the possibility of developing the competencies, abilities and skills that are conducive to the performance of the profession, generating greater added value to the physician.

The program, designed by prestigious professionals within the radiology specialty, is focused on practicality and the presentation of real cases based on the years of experience that the professionals have had throughout their careers. This is a great opportunity to learn first-hand about the advances, techniques and treatments that have been developed in recent times.

This Postgraduate Certificate in Oncological Radiology for Diagnosis contains the most complete and up-to-date scientific program on the market. The most outstanding features of the University Course are:

- ♦ The development of practical cases presented by experts in Oncological Radiology for Diagnosis.
- ♦ The graphic, schematic, and eminently practical contents with which they are created provide scientific and practical information on the disciplines that are essential for professional practice.
- ♦ The latest news on Radiology for Diagnostic Oncology.
- ♦ Practical exercises where the self-assessment process can be carried out to improve learning.
- ♦ With special emphasis on innovative methodologies in Oncological Radiology for diagnosis.
- ♦ Theoretical lessons, questions to the expert, debate forums on controversial topics, and individual reflection assignments.
- ♦ Content that is accessible from any fixed or portable device with an Internet connection.



*Do not miss the opportunity to study with us and improve in the diagnosis and treatment of oncological diseases"*

“

*This Postgraduate Certificate may be the best investment you can make in the selection of a refresher program for two reasons: in addition to updating your knowledge in Radiology for Oncological Diagnosis, you will obtain a Postgraduate Certificate issued by TECH Global University"*

Its teaching staff includes professionals belonging to the field of Oncological Radiology for Diagnostics, who bring to this training the experience of their work, in addition to recognized specialists belonging to prestigious reference societies and universities.

The multimedia content, developed with the latest educational technology, will provide the professional with situated and contextual learning, i.e., a simulated environment that will provide an immersive training program designed to train in real situations.

This program's design is based on problem-based learning, by means of which the professional must try to solve the different professional practice situations that arise during the course. For this purpose, the professional will be assisted by an innovative interactive video system created by renowned experts in the field of Oncological Radiology for diagnostics with extensive medical experience.

*This training will allow you to combine it with other activities as it is 100% online.*

*This Postgraduate Certificate is developed with the latest educational technology, which favors the study from a simulated environment to train for real situations.*



# 02 Objectives

This online Postgraduate Certificate in Oncological Radiology for Diagnosis is oriented to facilitate the performance of the professional dedicated to medicine with the latest advances and newest treatments in the sector.







“

*If you want to advance in your profession and improve in your daily practice, do not hesitate to take this Postgraduate Certificate in Radiology for Oncological Diagnosis with us"*

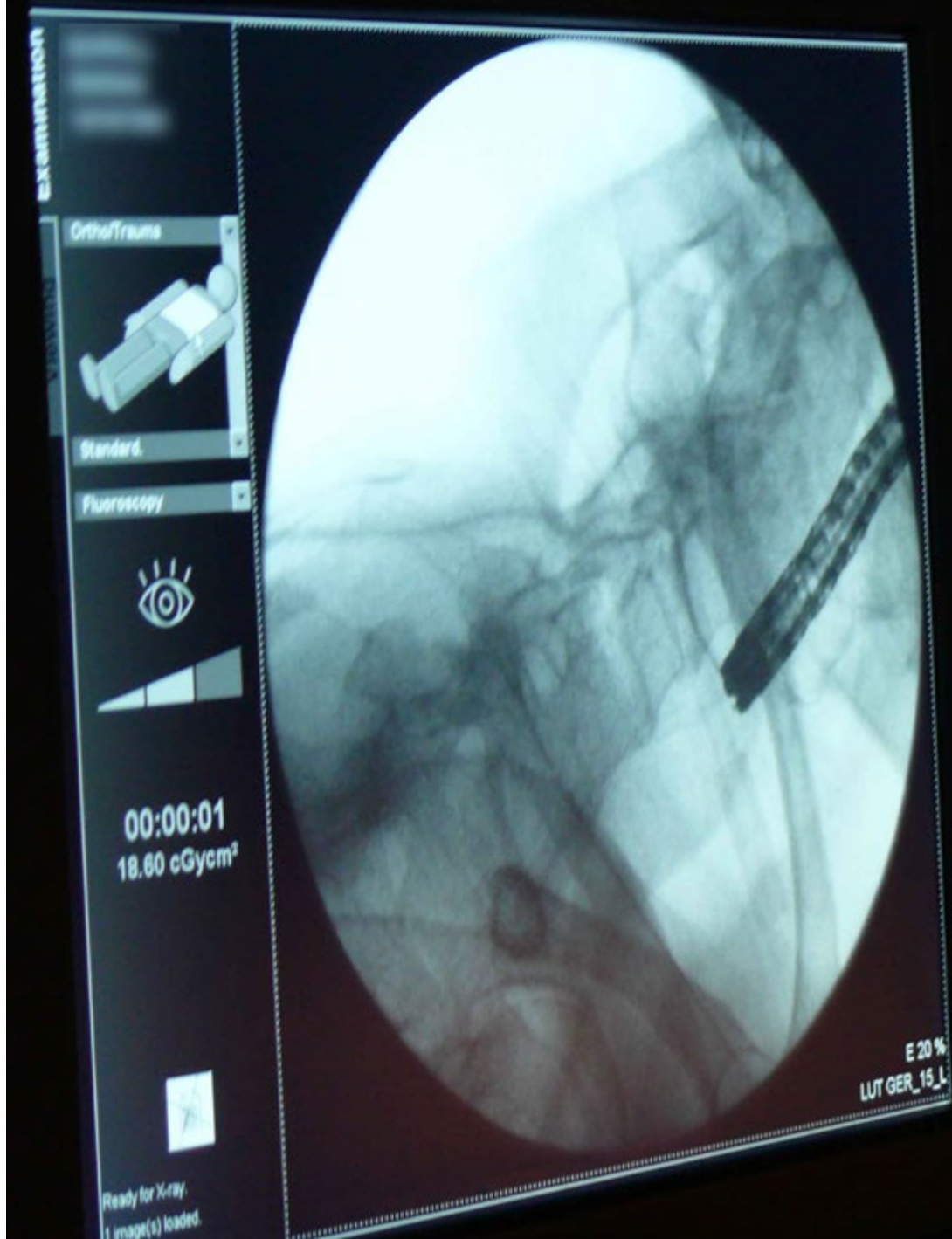


## General Objective

- The main goal of this training in Radiology for Oncological Diagnosis is to update the professional's knowledge on this subject, as well as the most advanced treatments and advances that are saving the lives of women affected by this disease.



*Update your knowledge through the program in Radiology for Oncological Diagnosis"*





## Specific Objectives

---

- ◆ Recognize the characteristics of malignant neoplasms, their classification according to their histogenesis, as well as aspects related to their biological behavior
- ◆ Acquire up-to-date knowledge on cancer epidemiological data worldwide
- ◆ Learn about screening methods in at-risk populations to diagnose cancerous lesions early.
- ◆ Recognize the environmental and occupational factors (mutagenic agents) that are directly and indirectly involved in cancer, and the carcinogenic capacity of some toxic substances found in food
- ◆ Relate DNA and RNA viruses known to cause cancer in humans
- ◆ Expose the mechanisms by which viruses are able to subjugate the normal activity of host cytoplasmic proteins, affecting key points in the control of the cell cycle, cell growth and differentiation, causing severe alterations in cell growth and cancer development.
- ◆ Recognize the role of H. pylori bacteria in the pathogenesis of gastric cancer.
- ◆ Understand cancer as a genetic disease resulting from mutations that accumulate in genes that are critical for the growth and development of somatic cells
- ◆ Describe the genes associated with cancer, and the importance of DNA analysis to identify individuals, detect predisposing gene polymorphisms, analyze mutations, and establish the diagnosis of cancer as a genetic disease
- ◆ Recognize the susceptibility genes involved in breast, lung, thyroid, colon, skin, bone, pancreatic, and neuroblastoma cancers, and by what mechanism they participate in tumorigenesis
- ◆ Know the symptoms and signs that are most frequently related to cancer, as well as the different systems for the staging of tumor disease and their importance
- ◆ Learn about aspects of the radiological diagnosis of the most common solid tumors in the body
- ◆ Learn about radiological techniques that are used in the functional study of malignant tumors
- ◆ Learn about the uses, contraindications, and complications of invasive diagnostic techniques performed by radiologists
- ◆ Know how to detect which radiological alterations are derived from antitumor treatment
- ◆ Possess detailed knowledge of the radiological techniques for monitoring tumor pathology

# 03

# Course Management

The program includes in its teaching staff leading experts in Radiology for a Oncological Diagnosis to this training the experience from their work. In addition, other experts of recognized prestige participate in its design and elaboration, completing the program in an interdisciplinary way.





“

*Learn about the latest advances in Oncological Radiology for Diagnostic procedures from the leading experts in the field"*

## International guest conductor

With more than 4 decades of professional career in the area of Pathology, Dr. Ignacio Wistuba is considered an international reference in this complex medical field. This prestigious researcher leads the Department of Translational Molecular Pathology at MD Anderson Cancer Center. He is also Director of the Khalifa Institute for Cancer Personalization, linked to the University of Texas.

In parallel, he directs the Thoracic Molecular Pathology Laboratory, the SPORE Lung Tissue Bank and the Institutional Tissue Bank. In turn, he is Director of the Biorepository and Pathology Core Network at the Eastern Cooperative Oncology Group, in conjunction with the American College of Radiology Imaging Network (ECOG-ACRIN).

One of the main lines of work of this pathologist in recent years has been Genomic and Precision Medicine. His multiple investigations in this field have allowed him to address the origin and complexities of different types of tumors, their incidence and their relationship with specific characteristics of the DNA of individuals. Specifically, he has delved into these issues in relation to lung neoplasms.

On the other hand, Wistuba maintains active research collaborations with other specialists from different parts of the world. An example of this is his participation in an exploratory analysis of cytokine levels in pleural fluid associated with immunotherapeutic protocols with the University for Development in Chile. He is also a member of global teams that, orchestrated by the Australian Royal Prince Alfred Hospital, have investigated different predictive biomarkers of lung cancer.

Likewise, the pathologist has sustained a continuous education since his initial studies in distinguished Chilean universities. Proof of this are his postdoctoral research internships in renowned institutions such as the Southwestern Medical Center and the Simmons Cancer Center in Dallas.



## Dr. Wistuba, Ignacio

---

- President of the Department of Translational Molecular Pathology, MD Anderson Cancer Center
- Director of the Division of Pathology/Laboratory Medicine at MD Anderson Cancer Center
- Specialty Pathologist in the Department of Thoracic/Head and Neck Medical Oncology at the University of Texas Medical Center
- Director, UT-Lung SPORE Tissue Bank
- Lung Cancer Pathologist for the Lung Cancer Committee at Southwestern Oncology Group (SWOG)
- Principal Investigator on several studies conducted by the Cancer Prevention and Research Institute of Texas
- Principal Investigator of the Translational Genomics and Precision Cancer Medicine Training Program at NIH/NCI
- Postdoctoral Fellow at the Hamon Center for Therapeutic Oncology Research Center
- Postdoctoral Fellow at Southwestern Medical Center and Simmons Cancer Center
- Pathologist at the Catholic University of Chile
- Medical Graduate at Universidad Austral de Chile
- Member of:

Academy of American and Canadian Pathologists  
Society for Cancer Immunotherapy

“

*Thanks to TECH, you will be able to learn with the best professionals in the world”*

## Management



### Dr. Rey Nodar, Severino

- ♦ Head of the Anatomy Pathology Department at Manises University Hospital, Synlab Pathology Europe. Valencia, Spain
- ♦ President of FORESC and FEBIP (Foundation for Sciences and Research USA/ Spanish Foundation for Training in Biomedical Sciences and Oncologic Pathology).
- ♦ Doctor Honoris Causa 2012 at Bircham International University, USA
- ♦ Chief Editor of Journal of Cancer and Tumor international
- ♦ Member of the Editorial Board of 6 international journals (topics related to oncopathology)
- ♦ Author: Glands Thyroid Pathology. Ed. Bubok 2012 y Endocrine Pathology. Text and Atlas. Ed. EdStudios, Spain, 2018
- ♦ Member of the New York Academy of Sciences (Sciences Academy of NY), 2011
- ♦ Integrand of the Power List 2019

## Professors

### Dr. Ángeles Franco, Tania María

- ♦ Head of Radiodiagnosis Service, Torre vieja and Vinalopó University Hospitals.
- ♦ Radiology Professor at UCAM.
- ♦ President of the Spanish Society of Radiodiagnosis and former Chief of Service of the Fundación Jiménez Díaz..

### Dr. Aldecoa Anzorregui, Iban

- ♦ Specialist in Anatomy and Pathology Barcelona Clinical Hospital
- ♦ Neuropathology Expert

### Dr. Barbella, Rosa

- ♦ Anatomopathologist attached to the Anatomy and Pathology Service at Albacete General Hospital. Resident tutor. Faculty of Medicine, Castilla La Mancha University. Expert in breast pathology

### D. Ballester Lozano, Gabriel

- ♦ Molecular Biologist at Vinalopó Hospital Ribera Salud Group



**Dr. Buendía Alcaraz, Ana**

- ♦ Female Anatomy
- ♦ Arcos del Mar Menor University Hospital
- ♦ (San Javier, Murcia)"

**Dr. Cuatrecasas, Miriam**

- ♦ Specialist in Anatomy and Pathology Barcelona Clinical Hospital
- ♦ Expert and Consultant in Gastrointestinal Pathology
- ♦ Coordinator of the Digestive Pathology SEAP working group.
- ♦ Coordinator of the Catalan Network of Tumor Banks (XBTC) and the Tumor Bank Clinic Hospital-IDIBAPS.
- ♦ IDIBAPS researcher

**Dr. Fernández, Iván**

- ♦ Neuropathologist of the Pathology Anatomy Service at Asturias Central University Hospital. Oviedo Spain.

**Dr. García Yllán, Verónica**

- ♦ Specialist in Pathological Anatomy and Master in Medicine and Education

**Dr. Labiano Miravalles, Tania**

- ♦ Specialist in Anatomy and Pathology, Pamplona Hospital Complex, Navarra, Spain.
- ♦ Cytology Expert

**Dr. Lozano, María Dolores**

- ♦ Specialist in Anatomy and Pathology
- ♦ Head of Female Anatomy Service, of Navarra University Clinical symptoms

**Dr. Machado, Isidro**

- ♦ Specialist in Pathological Anatomy, Valencian Institute of Oncology (IVO), Valencia.
- ♦ Expert in Soft Tissue Pathology and Sarcomas

**Dr. Ortiz Reina, Sebastián**

- ♦ Specialist in Pathological Anatomy.
- ♦ University Specialist in Electron Microscopy at Madrid Complutense University. University Specialist in Dermatopathology at Alcalá de Henares University. Associate Professor of Health Sciences in the subject of Pathological Anatomy at Madrid Complutense University.
- ♦ Lecturer in Histology and Cell Biology at the University School of Nursing at the Murcia University.
- ♦ University professor of practices for students of the career of Medicine at Murcia Catholic University.
- ♦ Tutor of residents of Anatomy Pathology of the University Complex of Cartagena

**Dr. Ribalta, Teresa**

- ♦ Anatomy and Pathology Professor, Barcelona University
- ♦ Expert in Neuropathology, currently Pediatric Pathology.
- ♦ Head of the Anatomy and Pathology Department, Sant Joan de Déu Hospital, Barcelona, Spain

**D. Rubio Fornés, Abel**

- ♦ Mathematician. Postgraduate Diploma in Statistics and Operations Research. University of Valencia

**Dña. Sansano Botella, Magdalena**

- ♦ Degree in Criminology at the Alicante University.
- ♦ Technician specializing in Anatomy and Pathology, Alicante University.

**Dr. Serrano Jiménez, María**

- ♦ Pathological Anatomy Physician
- ♦ Vinalopó Hospital

**Dr. Ribalta, Teresa**

- ♦ Anatomy and Pathology Professor, Barcelona University
- ♦ Expert in Neuropathology, currently Pediatric Pathology.
- ♦ Head of the Anatomy and Pathology Department, Sant Joan de Déu Hospital, Barcelona, Spain

**Dr. Rojas, Nohelia**

- ♦ Specialist in Anatomy Pathology, Vinalopó and Torrevieja University Hospitals.

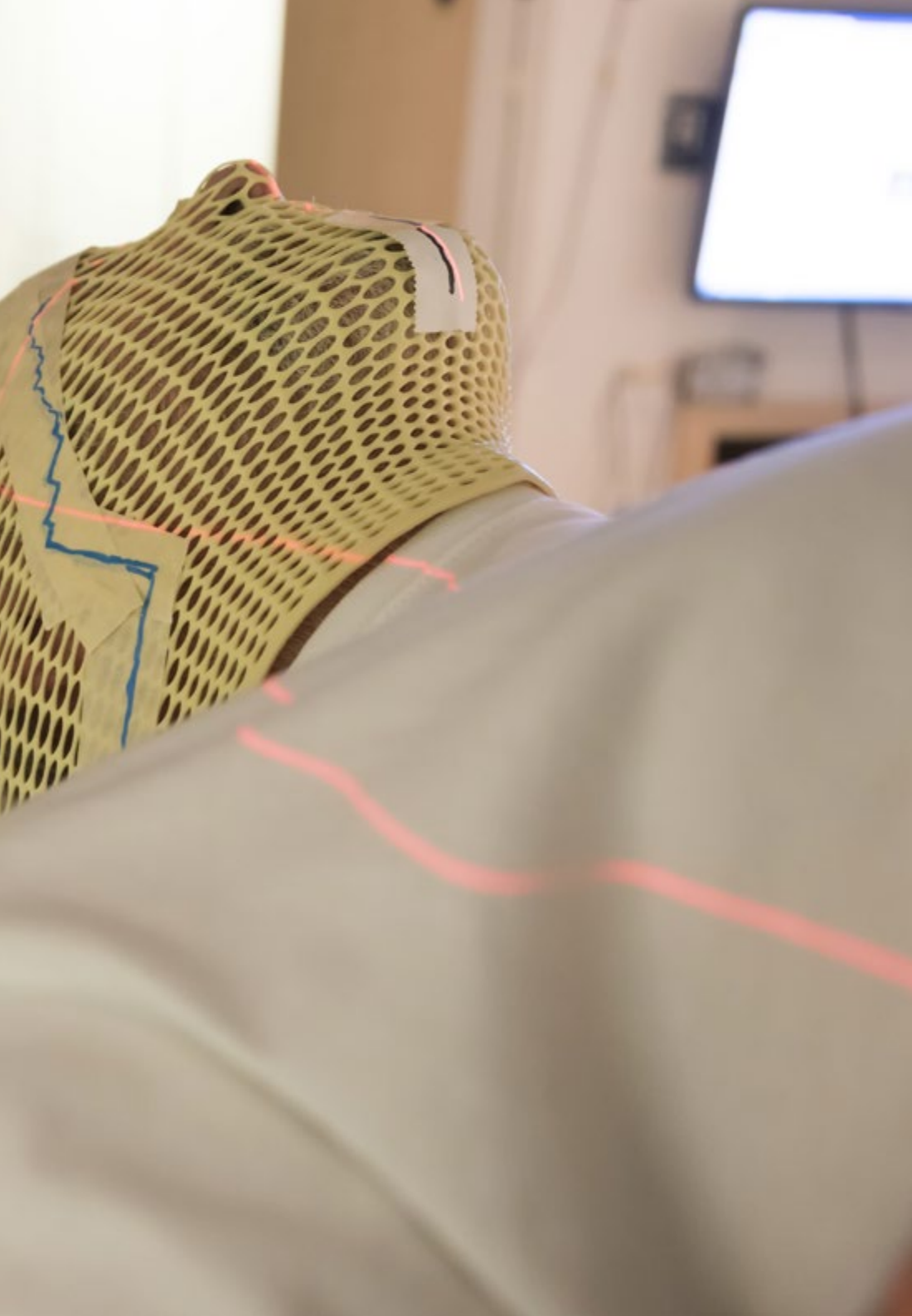
**Dr. Soto, Sara**

- ♦ Faculty Specialist. Torrevieja and Vinalopó University Hospitals

**Dr. Sua Villega MD, Luz Fernanda**

- ♦ Specialist in Anatomy and Clinical Pathology, Fundación Hospital Valle de Lili, Cali, Colombia.
- ♦ D. in Biomedical Sciences with emphasis in Solid Tumor Genomics.
- ♦ Medical Leader of the Special Hematology and Hemostasis Laboratory at Valle de Lili Hospital.





“

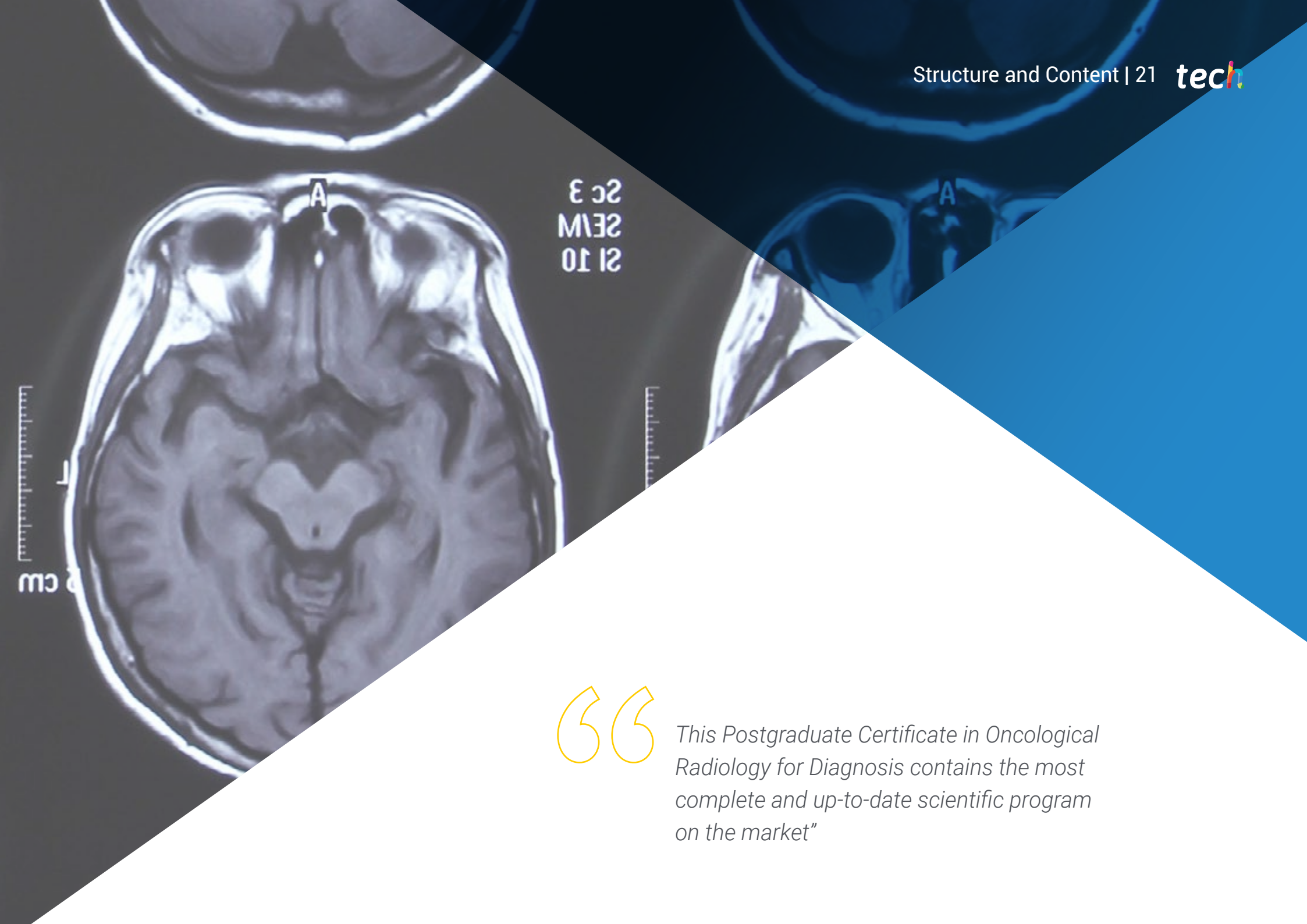
*Acquire the necessary skills to specialize in this field and give a boost to your profession"*

04

# Structure and Content

The contents structure has been designed by the best professionals in the field of Radiology for Oncological Diagnosis, with an extensive experience and recognized prestige in the profession, backed by the volume of cases reviewed, studied and diagnosed, and with a wide mastery of new technologies applied to toxicological diagnosis.





21 10  
ME2  
3 2

“

*This Postgraduate Certificate in Oncological Radiology for Diagnosis contains the most complete and up-to-date scientific program on the market”*

## Module 1. Cancer General Aspects. Risk Factors

### 1.1. Introduction.

#### 1.1.1. Overview of Malignant Neoplasms.

##### 1.1.1.1. Nomenclature.

##### 1.1.1.2. Features.

##### 1.1.1.3. How Metastases Spread.

##### 1.1.1.4. Prognostic Factors

#### 1.1.2. Epidemiology of Cancer.

##### 1.1.2.1. Incidence.

##### 1.1.2.2. Prevalence.

##### 1.1.2.3. Geographical Distribution

##### 1.1.2.4. Risk Factors.

##### 1.1.2.5. Prevention.

##### 1.1.2.6. Early Diagnosis.

#### 1.1.3. Mutagenic Agents.

##### 1.1.3.1. Environmental.

##### 1.1.3.2. Workplace.

##### 1.1.3.3. Toxic Substances in Food.

#### 1.1.4. Biological Agents and Cancer.

##### 1.1.4.1. RNA Virus.

##### 1.1.4.2. DNA Virus.

##### 1.1.4.3. H. pylori.

#### 1.1.5. Genetic Predisposition.

##### 1.1.5.1. Genes Linked to Cancer.

##### 1.1.5.2. Susceptibility Genes.

##### 1.1.5.2.1. Breast Tumors.

##### 1.1.5.2.2. Lung Tumors.

##### 1.1.5.2.3. Thyroid Tumors.

##### 1.1.5.2.4. Colon Tumors.

##### 1.1.5.2.5. Skin Tumors.

##### 1.1.5.2.6. Bone Tumors.

##### 1.1.5.2.7. Pancreas Tumors.

##### 1.1.5.2.8. Neuroblastoma.

#### 1.1.6. Clinical Aspects of Malignant Neoplasms.

##### 1.1.6.1. Introduction.

##### 1.1.6.2. Basic Principles.

#### 1.1.7. Staging of neoplastic disease.

##### 1.1.7.1. Introduction.

##### 1.1.7.2. Update.

## Module 2. Radiology and Pathology in Oncological Diagnosis

### 2.1. Diagnostic Imaging and Cancer Staging.

#### 2.1.1. Lung Neoplasia.

#### 2.1.2. Colorectal Neoplasia.

#### 2.1.3. Breast Neoplasia.

#### 2.1.4. Prostate Neoplasia.

#### 2.1.5. Gynecologic Neoplasia.

#### 2.1.6. Lymphoma.

#### 2.1.7. Melanoma.

#### 2.1.8. Other GI Tract Tumors.

#### 2.1.9. Hepatocarcinoma and Cholangiocarcinoma.

#### 2.1.10. Pancreas Tumors.

#### 2.1.11. Kidney Tumors.

#### 2.1.12. Thyroid Cancer.

#### 2.1.13. Brain Tumors.

### 2.2. Image-Guided FNA and CNB.

#### 2.2.1. Thyroid.

#### 2.2.2. Breast.

#### 2.2.3. Lung and Mediastinum.

#### 2.2.4. Liver and Abdominal Cavity.

#### 2.2.5. Prostate.



- 2.3. Follow up
  - 2.3.1. RECIST 1.1 and Chung.
  - 2.3.2. EASL, m-RECIST and RECICL.
  - 2.3.3. MacDonald and RANO Criteria.
  - 2.3.4. CHOI, MDA, and Lugano Criteria.
  - 2.3.5. Modified CHOI Criteria; SCAT and MASS.
  - 2.3.6. MET-RAD-P.
  - 2.3.7. PERCIST.
  - 2.3.8. Immunotherapy.
- 2.4. Treatment Complications.
  - 2.4.1. Oncologic Emergencies.
  - 2.4.2. Treatment Complications.

“ A unique, key, and decisive  
Training experience to boost your  
professional development”

05

# Methodology

This training provides you with a different way of learning. Our methodology uses a cyclical learning approach: ***Re-learning***.

This teaching system is used in the most prestigious medical schools in the world, and major publications such as the ***New England Journal of Medicine*** have considered it to be one of the most effective.





“

*Discover Re-learning, a system that abandons conventional linear learning, to take you through cyclical teaching systems: a way of learning that has proven to be extremely effective, especially in subjects that require memorization"*

## At TECH we use the Case Method

In a given situation, what would you do? Throughout the program you will be presented with multiple simulated clinical cases based on real patients, where you will have to investigate, establish hypotheses and, finally, resolve the situation. There is abundant scientific evidence on the effectiveness of the method. Specialists learn better, faster, and more sustainably over time.

*With TECH you can experience a way of learning that is shaking the foundations of traditional universities around the world.*



According to Dr. Gervas, the clinical case is the annotated presentation of a patient, or group of patients, which becomes a "case", an example or model that illustrates some peculiar clinical component, either because of its teaching potential or because of its uniqueness or rarity. It is essential that the case is based on current professional life, trying to recreate the real conditions in the physician's professional practice.

“

*Did you know that this method was developed in 1912 at Harvard for law students? The case method consisted of presenting students with real-life, complex situations for them to make decisions and justify their decisions on how to solve them. In 1924, Harvard adopted it as a standard teaching method”*

The effectiveness of the method is justified by four fundamental achievements:

1. Students who follow this method not only grasp concepts, but also develop their mental capacity by evaluating real situations and applying their knowledge.
2. The learning process has a clear focus on practical skills that allow the student to better integrate into the real world.
3. Ideas and concepts are understood more efficiently, given that the example situations are based on real-life.
4. Students like to feel that the effort they put into their studies is worthwhile. This then translates into a greater interest in learning and more time dedicated to working on the course.



## Re-Learning Methodology

At TECH we enhance the Harvard case method with the best 100% online teaching methodology available: Re-learning.

Our University is the first in the world to combine the study of clinical cases with a 100% online learning system based on repetition, combining a minimum of 8 different elements in each lesson, which represent a real revolution with respect to simply studying and analyzing cases.

*The physician will learn through real cases and by solving complex situations in simulated learning environments. These simulations are developed using state-of-the-art software to facilitate immersive learning.*



At the forefront of world teaching, the Re-learning method has managed to improve the overall satisfaction levels of professionals who complete their studies, with respect to the quality indicators of the best Spanish-speaking online university (Columbia University).

With this methodology we have trained more than 250,000 physicians with unprecedented success, in all clinical specialties regardless of the surgical load. All this in a highly demanding environment, where the students have a strong socio-economic profile and an average age of 43.5 years.

*Re-learning will allow you to learn with less effort and better performance, involving you more in your training, developing a critical mindset, defending arguments, and contrasting opinions: a direct equation to success.*

In our program, learning is not a linear process, but rather a spiral (we learn, unlearn, forget, and re-learn). Therefore, we combine each of these elements concentrically.

The overall score obtained by our learning system is 8.01, according to the highest international standards.



In this program you will have access to the best educational material, prepared with you in mind:



#### Study Material

All teaching material is produced by the specialists who teach the course, specifically for the course, so that the teaching content is highly specific and precise.

This content is then adapted in an audiovisual format that will create our way of working online, with the latest techniques that allow us to offer you high quality in all of the material that we provide you with.



#### Latest Techniques and Procedures on Video

We introduce you to the latest techniques, to the latest educational advances, to the forefront of current medical techniques. All this, in first person, with the maximum rigor, explained and detailed for your assimilation and understanding. And best of all, you can watch them as many times as you want.



#### Interactive Summaries

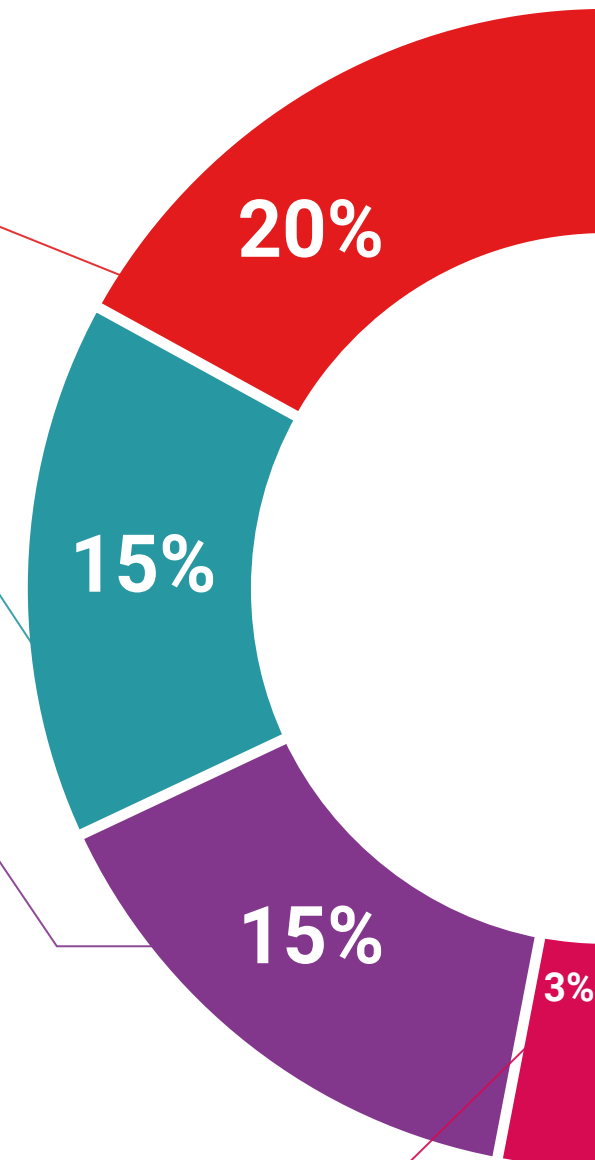
We present the contents attractively and dynamically in multimedia lessons that include audio, videos, images, diagrams, and concept maps in order to reinforce knowledge.

This unique training system for presenting multimedia content was awarded by Microsoft as a "European Success Story".



#### Additional Reading

Recent articles, consensus documents, international guides... in our virtual library you will have access to everything you need to complete your training.





**Expert-Led Case Studies and Case Analysis**

Effective learning ought to be contextual. Therefore, we will present you with real case developments in which the expert will guide you through focusing on and solving the different situations: a clear and direct way to achieve the highest degree of understanding.



**Testing & Re-testing**

We periodically evaluate and re-evaluate your knowledge throughout the program, through assessment and self-assessment activities and exercises: so that you can see how you are achieving your goals.



**Classes**

There is scientific evidence suggesting that observing third-party experts can be useful.

Learning from an expert strengthens knowledge and memory, and generates confidence in our future difficult decisions.



**Quick Action Guides**

We offer you the most relevant contents of the course in the form of worksheets or quick action guides. A synthetic, practical, and effective way to help you progress in your learning.



06

# Certificate

This **Postgraduate Certificate in Oncological Radiology for Diagnosis** guarantees you, in addition to the most rigorous and up-to-date training, the access to a Postgraduate Certificate issued by **TECH Global University**.





“

*Successfully complete this training and receive your university degree without travel or laborious paperwork”*

This program will allow you to obtain your **Postgraduate Certificate in Radiology for Oncological Diagnosis** endorsed by **TECH Global University**, the world's largest online university.

**TECH Global University** is an official European University publicly recognized by the Government of Andorra ([official bulletin](#)). Andorra is part of the European Higher Education Area (EHEA) since 2003. The EHEA is an initiative promoted by the European Union that aims to organize the international training framework and harmonize the higher education systems of the member countries of this space. The project promotes common values, the implementation of collaborative tools and strengthening its quality assurance mechanisms to enhance collaboration and mobility among students, researchers and academics.

This **TECH Global University** title is a European program of continuing education and professional updating that guarantees the acquisition of competencies in its area of knowledge, providing a high curricular value to the student who completes the program.

Title: **Postgraduate Certificate in Radiology for Oncological Diagnosis**

Modality: **online**

Duration: **6 weeks**

Accreditation: **7 ECTS**



future  
health confidence people  
education information tutors  
guarantee accreditation teaching  
institutions technology learning  
community commitment  
personalized service innovation  
knowledge present  
online training  
development languages  
virtual classroom



**Postgraduate Certificate**  
Radiology for  
Oncological Diagnosis

- » Modality: online
- » Duration: 6 weeks
- » Certificate: TECH Global University
- » Credits: 7 ECTS
- » Schedule: at your own pace
- » Exams: online

# Postgraduate Certificate

## Radiology for Oncological Diagnosis

