

Postgraduate Certificate

Palliative Care in Oncology Patients



Postgraduate Certificate Palliative Care in Oncology Patients

- » Modality: online
- » Duration: 6 weeks
- » Certificate: TECH Global University
- » Credits: 6 ECTS
- » Schedule: at your own pace
- » Exams: online

Website: www.techtitute.com/us/medicine/postgraduate-certificate/palliative-care-oncology-patients

Index

01

Introduction

p. 4

02

Objectives

p. 8

03

Course Management

p. 12

04

Structure and Content

p. 18

05

Methodology

p. 22

06

Certificate

p. 30

01

Introduction

Despite significant advances in the treatment of cancer, a large number of patients continue to experience debilitating symptoms and diminished quality of life during the advanced stages of the disease. In this regard, early integration of Palliative Care into cancer care has emerged as an effective strategy to address these unmet needs. In view of the growing number of patients, medical professionals need to have a thorough knowledge of the development of this pathology and update their skills to provide the most sophisticated therapeutic treatments. For this reason, TECH has developed an innovative program focused on the biology and epidemiology of Cancer. In addition, it is taught 100% online.





“

Through this Postgraduate Certificate supported by Relearning, you will have a holistic view on the care of Cancer Patients in Palliative Care and apply appropriate treatments to reduce their symptoms"

The integration of new technologies propelled by Industry 4.0 into clinical practice is transforming medical care, including the field of Palliative Care in Oncology Patients. From the use of mobile applications for symptom tracking to the implementation of telemedicine systems for remote consultation and care, emerging technologies are improving the accessibility, efficiency and quality of care in this clinical context. Despite this, this branch of healthcare presents a number of challenges for practitioners, including achieving adequate control of symptoms associated with Cancer (such as nausea, vomiting or dyspnea). In view of this, professionals need to adopt a multidisciplinary approach to promote therapeutic strategies that meet the individual needs of each patient.

Within this framework, TECH is developing a pioneering and revolutionary program in Palliative Care in Oncology Patients. Designed and taught by professionals in this field, the academic itinerary will address in detail the biology and epidemiology of cancer. In this line, the syllabus will delve into the most effective anticancer treatments to reduce the symptoms of users (among which Chemotherapy, Radiotherapy and Immunotherapy). Likewise, the didactic materials will analyze the most frequent symptoms related to Cancer and will provide the most appropriate therapies in each case. In this way, graduates will acquire advanced skills to manage patients' pain by means of analgesic drugs and other effective interventions.

Moreover, this university program is taught 100% online, which allows physicians to adapt the pace of learning to their needs and availability. In this sense, the Relearning pedagogical methodology, used in the program, focuses on active learning and problem solving through directed reiteration of the concepts, resulting in a faster internalization of them. In addition, this program includes a very complete and exclusive Masterclass given by a distinguished International Guest Director.

This **Postgraduate Certificate in Palliative Care in Oncology Patients** contains the most complete and up-to-date scientific program on the market. The most important features include:

- ♦ Practical cases presented by experts in Palliative Care
- ♦ The graphic, schematic and practical contents with which it is conceived provide scientific and practical information on those disciplines that are essential for professional practice
- ♦ Practical exercises where the self-assessment process can be carried out to improve learning
- ♦ Its special emphasis on innovative methodologies
- ♦ Theoretical lessons, questions to the expert, debate forums on controversial topics, and individual reflection assignments
- ♦ Content that is accessible from any fixed or portable device with an Internet connection



Get qualified with a renowned international expert and the Masterclass he will offer you, thanks to this 100% online TECH program"

“

You will address in detail the most common syndromes related to Cancer to optimize treatments and improve the welfare of your patients"

The program's teaching staff includes professionals from the sector who contribute their work experience to this specializing program, as well as renowned specialists from leading societies and prestigious universities.

The multimedia content, developed with the latest educational technology, will provide the professional with situated and contextual learning, i.e., a simulated environment that will provide immersive education programmed to learn in real situations.

This program is designed around Problem-Based Learning, whereby the professional must try to solve the different professional practice situations that arise during the course. For this purpose, students will be assisted by an innovative interactive video system created by renowned and experienced experts.

You will obtain advanced clinical skills aimed at the evaluation and effective management of a variety of symptoms, including pain or vomiting.

In order for you to achieve your academic goals TECH provides you with a 100% online methodology, based on free access to content and personalized learning.



02 Objectives

Thanks to this revolutionary university program, practitioners will master the fundamental principles of Palliative Care in Oncology Patients. In this way, specialists will develop advanced competencies to recognize the most common symptomatology among these individuals and make rigorous diagnoses. This will enable graduates to provide user-centered clinical care and perform holistic symptom management using both drugs and the main anticancer treatments (such as Chemotherapy or Radiotherapy). Additionally, professionals will strengthen their communication skills to interact with individuals and address issues ranging from prognosis to advance care planning.





You will develop skills in pain management of Oncology Patients in Palliative Care, including the appropriate use of analgesic medications and other interventions to reduce symptoms”



General Objectives

- ♦ Have a solid understanding of the fundamentals and models of care in Palliative Care, as well as aspects such as epidemiology or pathophysiology of chronic diseases
- ♦ Enhance clinical skills for the comprehensive assessment of patients, including the management of complex symptoms and the approach to total suffering
- ♦ Adopt an individualized approach to care, focusing on both the preferences and values of users, respecting their autonomy at all stages of pathology
- ♦ Obtain empathetic and effective communication skills with both affected individuals and their families
- ♦ Apply knowledge of specific nutrition to improve prognosis and reduce complications in patients with advanced disease
- ♦ Keep abreast of innovations in matters such as diagnostic and therapeutic techniques most relevant to the follow-up of palliative patients





Specific Objectives

- ◆ Understand the functioning of the Oncology Services
- ◆ Analyze the different types of Cancer by apparatus and systems

“

You will be able to accurately assess common physical symptoms in end-stage cancer patients, such as fatigue, dyspnea or nausea”

03

Course Management

TECH's priority is to offer everyone access to the most complete and up-to-date university programs available in the academic field. To achieve this, it carries out a rigorous selection process to recruit the best specialists. As a result, this Postgraduate Certificate brings together leading experts in the field of Palliative Care. These professionals have extensive work experience in major hospitals and have contributed significantly to improving the quality of life of many terminally ill patients. Therefore, this quality experience will raise the level of clinical practice of the graduates.





“

A teaching team specialized in Palliative Care in Oncology Patients will pour their extensive knowledge in this medical branch in this very complete university program"

International Guest Director

Dr. Blinderman is Associate Professor of Medicine and **Director of the Adult Palliative Medicine Service at Columbia University Medical Center/New York-Presbyterian Hospital**. He was previously an attending physician on the Palliative Care Service at Massachusetts General Hospital and co-directed the MGH Cancer Pain Clinic from 2007-2010.

He has published numerous original articles, reviews and chapters in the following areas: palliative care, early palliative care in lung cancer patients, palliative care for the dying patient, medical ethics, existential distress, symptom assessment and quality of life in patients with chronic pulmonary and heart failure, as well as cancer pain management and pain management in patients with a history of substance abuse. He is currently the editor of the Case Discussions section of the Journal of Palliative Medicine.

His academic resume includes an **MD in Medical School for International Health** from Ben Gurion University, as well as a **BA in Chemistry from Boston University**, a degree he earned Magna Cum Laude.



Dr. Blinderman, Craig David

- Director of Palliative Care at New York Presbyterian Hospital, New York, U.S.A.
- Specialist in Palliative Care at Massachusetts General Hospital
- Professor of Medicine at Harvard Medical School
- Degree in Chemistry, Boston University
- Associate Professor, Department of Medicine, Columbia University

“

Thanks to TECH you will be able to learn with the best professionals in the world"

Management



Dr. Lafuente Sanchis, Manuel Pablo

- ◆ Head of the Home Hospitalization and Palliative Care Service at La Ribera University Hospital, Valencia
- ◆ Specialist in Family and Community Medicine at the Virgen de los Lirios Hospital, Alcoy
- ◆ Clinical Simulation Instructor, Catholic University of Murcia
- ◆ University Professor in Nursing Studies
- ◆ Expert in Palliative Care, International University of La Rioja
- ◆ University Expert in University Teaching from the Catholic University of Valencia
- ◆ Degree in Medicine and Surgery from the University of Valencia
- ◆ Member of: Spanish Society of Home Hospitalization and Spanish Society of Clinical Simulation

Professors

Dr. Martín Marco, Antonio

- ◆ Internal Medicine Specialist at Arnau de Vilanova Hospital, Valencia
- ◆ Attending Physician in the Home Hospitalization and Palliative Care Unit
- ◆ Head of Teaching and Research in the Palliative Care in Unit
- ◆ Master's Degree in Emergency Medical Care
- ◆ Master's Degree in Emergency Medical Care
- ◆ Degree in Medicine and Surgery from the University of Zaragoza
- ◆ Member of: Spanish Society of Medical Oncology and Spanish Society of Internal Medicine



04

Structure and Content

With this university program, health professionals will have the knowledge and skills required to provide comprehensive care to patients with Cancer in advanced stages of the disease. The syllabus will analyze both the biology and oncology of this disease, taking into account genetic factors and the process of chronification. Likewise, the syllabus will delve into the main related syndromes and the most effective anticancer treatments (Chemotherapy, Radiotherapy and Immunotherapy). Therefore, graduates will develop individualized treatment plans based on the type of Cancer, the stage of the disease and other clinical factors.



“

A university program conducted by specialists in Palliative Care and high-level didactic materials are the key to a successful career"

Module 1. Palliative Care in Oncology Patients

- 1.1. Biology and Cancer Epidemiology
 - 1.1.1. Epidemiology
 - 1.1.2. Genetic and Environmental Factors
 - 1.1.3. Evolution Over the Years
 - 1.1.4. Chronification of Cancer
- 1.2. Medical oncology
 - 1.2.1. Development of the Specialty
 - 1.2.2. Organization
 - 1.2.3. Expectations for the Future
- 1.3. Anti-cancer Treatments
 - 1.3.1. Chemotherapy
 - 1.3.2. Radiotherapy
 - 1.3.3. Immunotherapy
- 1.4. Cancer-related Syndromes
 - 1.4.1. Hypercalcemia
 - 1.4.2. Vena Cava Syndrome
 - 1.4.3. Oral complications
 - 1.4.4. Paraneoplastic Syndromes
 - 1.4.5. Coagulation Disorders
- 1.5. Respiratory Cancer
 - 1.5.1. Most Common Types
 - 1.5.2. Treatment
 - 1.5.3. Frequent Complications
- 1.6. ORL Cancer
 - 1.6.1. Most Common Types
 - 1.6.2. Treatment
 - 1.6.3. Frequent Complications
- 1.7. Breast and Genitourinary Cancer
 - 1.7.1. Most Common Types
 - 1.7.2. Treatment
 - 1.7.3. Frequent Complications





- 1.8. Digestive Cancer
 - 1.8.1. Most Common Types
 - 1.8.2. Treatment
 - 1.8.3. Frequent Complications
- 1.9. Neurological Cancer
 - 1.9.1. Most Common Types
 - 1.9.2. Treatment
 - 1.9.3. Frequent Complications
- 1.10. Hematologic Cancer
 - 1.10.1. Most Common Types
 - 1.10.2. Treatment
 - 1.10.3. Frequent Complications

“Take the opportunity, to get up to date on the latest trends in Medical Oncology.”
Enroll now and experience a leap in quality in your clinical practice!”

05

Methodology

This academic program offers students a different way of learning. Our methodology uses a cyclical learning approach: **Relearning**.

This teaching system is used, for example, in the most prestigious medical schools in the world, and major publications such as the **New England Journal of Medicine** have considered it to be one of the most effective.



“

Discover Relearning, a system that abandons conventional linear learning, to take you through cyclical teaching systems: a way of learning that has proven to be extremely effective, especially in subjects that require memorization"

At TECH we use the Case Method

What should a professional do in a given situation? Throughout the program, students will face multiple simulated clinical cases, based on real patients, in which they will have to do research, establish hypotheses, and ultimately resolve the situation. There is an abundance of scientific evidence on the effectiveness of the method. Specialists learn better, faster, and more sustainably over time.

With TECH you will experience a way of learning that is shaking the foundations of traditional universities around the world.



According to Dr. Gérvas, the clinical case is the annotated presentation of a patient, or group of patients, which becomes a "case", an example or model that illustrates some peculiar clinical component, either because of its teaching power or because of its uniqueness or rarity. It is essential that the case is based on current professional life, trying to recreate the real conditions in the physician's professional practice.

“

Did you know that this method was developed in 1912, at Harvard, for law students? The case method consisted of presenting students with real-life, complex situations for them to make decisions and justify their decisions on how to solve them. In 1924, Harvard adopted it as a standard teaching method”

The effectiveness of the method is justified by four fundamental achievements:

1. Students who follow this method not only achieve the assimilation of concepts, but also a development of their mental capacity, through exercises that evaluate real situations and the application of knowledge.
2. Learning is solidly translated into practical skills that allow the student to better integrate into the real world.
3. Ideas and concepts are understood more efficiently, given that the example situations are based on real-life.
4. Students like to feel that the effort they put into their studies is worthwhile. This then translates into a greater interest in learning and more time dedicated to working on the course.



Relearning Methodology

At TECH we enhance the case method with the best 100% online teaching methodology available: Relearning.

This university is the first in the world to combine the study of clinical cases with a 100% online learning system based on repetition, combining a minimum of 8 different elements in each lesson, a real revolution with respect to the mere study and analysis of cases.

Professionals will learn through real cases and by resolving complex situations in simulated learning environments. These simulations are developed using state-of-the-art software to facilitate immersive learning.



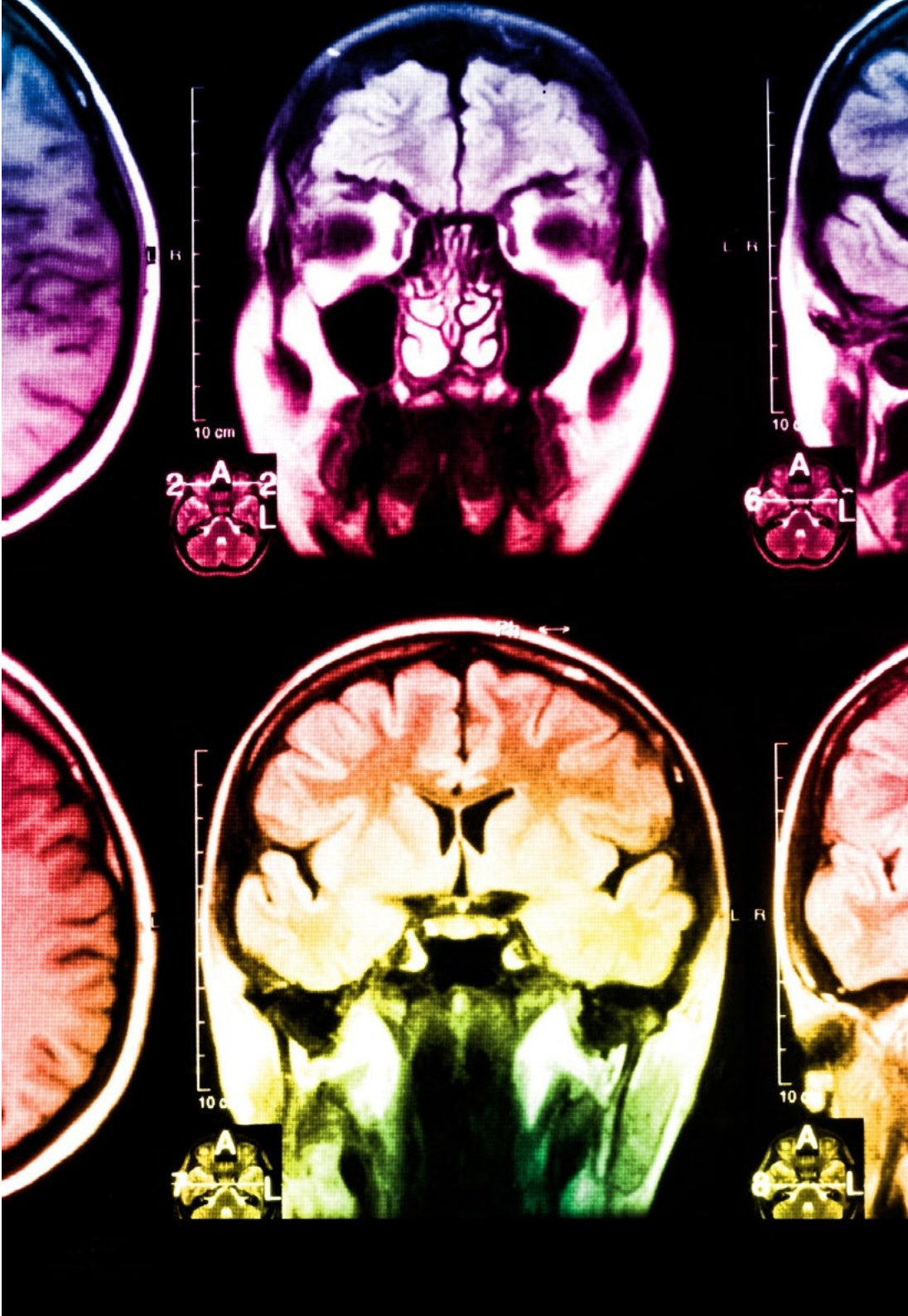
At the forefront of world teaching, the Relearning method has managed to improve the overall satisfaction levels of professionals who complete their studies, with respect to the quality indicators of the best online university (Columbia University).

With this methodology, more than 250,000 physicians have been trained with unprecedented success in all clinical specialties regardless of surgical load. Our pedagogical methodology is developed in a highly competitive environment, with a university student body with a strong socioeconomic profile and an average age of 43.5 years old.

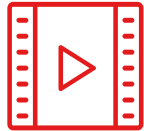
Relearning will allow you to learn with less effort and better performance, involving you more in your specialization, developing a critical mindset, defending arguments, and contrasting opinions: a direct equation to success.

In our program, learning is not a linear process, but rather a spiral (learn, unlearn, forget, and re-learn). Therefore, we combine each of these elements concentrically.

The overall score obtained by TECH's learning system is 8.01, according to the highest international standards.



This program offers the best educational material, prepared with professionals in mind:



Study Material

All teaching material is produced by the specialists who teach the course, specifically for the course, so that the teaching content is highly specific and precise.

These contents are then applied to the audiovisual format, to create the TECH online working method. All this, with the latest techniques that offer high quality pieces in each and every one of the materials that are made available to the student.



Surgical Techniques and Procedures on Video

TECH introduces students to the latest techniques, the latest educational advances and to the forefront of current medical techniques. All of this in direct contact with students and explained in detail so as to aid their assimilation and understanding. And best of all, you can watch the videos as many times as you like.



Interactive Summaries

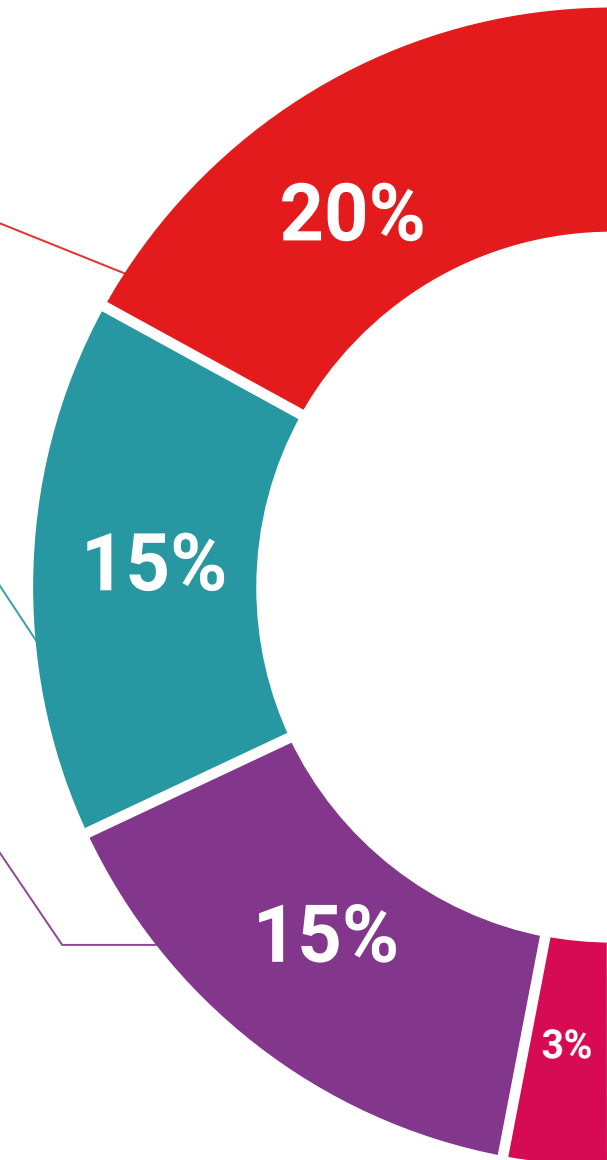
The TECH team presents the contents attractively and dynamically in multimedia lessons that include audio, videos, images, diagrams, and concept maps in order to reinforce knowledge.

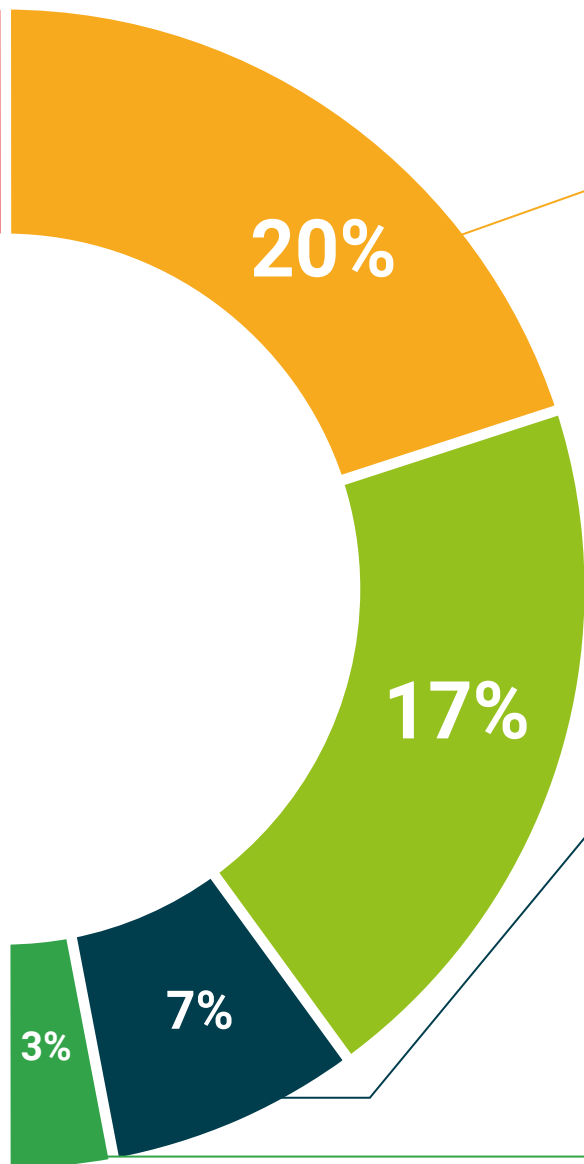
This exclusive educational system for presenting multimedia content was awarded by Microsoft as a "European Success Story".



Additional Reading

Recent articles, consensus documents and international guidelines, among others. In TECH's virtual library, students will have access to everything they need to complete their course.





Expert-Led Case Studies and Case Analysis

Effective learning ought to be contextual. Therefore, TECH presents real cases in which the expert will guide students, focusing on and solving the different situations: a clear and direct way to achieve the highest degree of understanding.



Testing & Retesting

We periodically evaluate and re-evaluate students' knowledge throughout the program, through assessment and self-assessment activities and exercises, so that they can see how they are achieving their goals.



Classes

There is scientific evidence on the usefulness of learning by observing experts. The system known as Learning from an Expert strengthens knowledge and memory, and generates confidence in future difficult decisions.



Quick Action Guides

TECH offers the most relevant contents of the course in the form of worksheets or quick action guides. A synthetic, practical, and effective way to help students progress in their learning.



06 Certificate

The Postgraduate Certificate in Palliative Care in Oncology Patients guarantees students, in addition to the most rigorous and up-to-date education program, access to a Postgraduate Certificate issued by TECH Global University.





“

Successfully complete this program and receive your university qualification without having to travel or fill out laborious paperwork”

This program will allow you to obtain a **Postgraduate Certificate in Palliative Care in Oncology Patients** endorsed by **TECH Global University**, the world's largest online university.

TECH Global University, is an official European University publicly recognized by the Government of Andorra (*official bulletin*). Andorra is part of the European Higher Education Area (EHEA) since 2003. The EHEA is an initiative promoted by the European Union that aims to organize the international training framework and harmonize the higher education systems of the member countries of this space. The project promotes common values, the implementation of collaborative tools and strengthening its quality assurance mechanisms to enhance collaboration and mobility among students, researchers and academics.

This **TECH Global University title**, is a European program of continuing education and professional updating that guarantees the acquisition of competencies in its area of knowledge, providing a high curricular value to the student who completes the program.

Title: **Postgraduate Certificate in Palliative Care in Oncology Patients**

Modality: **online**

Duration: **6 weeks**

Accreditation: **6 ECTS**



future
health confidence people
education information tutors
guarantee accreditation teaching
institutions technology learning
community commitment



Postgraduate Certificate

Palliative Care in Oncology Patients

- » Modality: online
- » Duration: 6 weeks
- » Certificate: TECH Global University
- » Credits: 6 ECTS
- » Schedule: at your own pace
- » Exams: online

Postgraduate Certificate

Palliative Care in Oncology Patients

