

Postgraduate Certificate

Nutrition in Palliative Care Patients



Postgraduate Certificate Nutrition in Palliative Care Patients

- » Modality: online
- » Duration: 6 weeks
- » Certificate: TECH Global University
- » Credits: 6 ECTS
- » Schedule: at your own pace
- » Exams: online

Website: www.techtute.com/us/medicine/postgraduate-certificate/nutrition-palliative-care-patients

Index

01

Introduction

p. 4

02

Objectives

p. 8

03

Course Management

p. 12

04

Structure and Content

p. 18

05

Methodology

p. 22

06

Certificate

p. 30

01

Introduction

Nutrition plays a key role in patients' well-being and quality of life in Palliative Care. However, the nutritional needs of this group of individuals are complex due to the symptoms associated with terminal illness and the side effects of treatment. For example, both chemotherapy and radiation therapy can cause a lack of appetite that significantly affects the overall well-being of individuals. In this context, Medical professionals need to stay at the forefront of recommendations in the field of nutrition oriented to Palliative Patients. In view of this, TECH is developing an innovative online program that will provide physicians with the most sophisticated tools to effectively address the nutritional needs of this population.





“

Thanks to this Postgraduate Certificate, based on Relearning, you will design nutritional plans adapted to the individual needs of Palliative Patients"

Anemia is one of the most common complications experienced by patients in Palliative Care and has a considerable impact on both their quality of life and prognosis. In this regard, Nutrition is a fundamental element in the management of this clinical condition, since certain nutrients are essential for the production of red blood cells and the optimal function of the hematopoietic system. However, the treatment of this condition in palliative individuals presents unique challenges due to the complexity of nutritional needs and the presence of other symptoms and comorbidities.

Aware of this reality, TECH implements a pioneering and cutting-edge program in Nutrition in Palliative Care Patients. The academic pathway will provide physicians with a solid understanding of Nutrition specific to terminally ill patients. To this end, the didactic materials will analyze different types of diets (such as hyperproteic, restrictive or hypercaloric) with the aim of enabling graduates to develop food plans that meet the nutritional needs of patients and promote their well-being. At the same time, the program will address specific conditions such as tumor cachexia, dysphagia, COPD or diabetes mellitus, providing specialists with dietary guidelines adapted to each situation. In addition, the program will focus on the effective management of Artificial Nutrition, providing experts with the necessary tools for its clinical application.

Furthermore, the university program is based on the Relearning method, of which TECH is a pioneer, and which guarantees the exhaustive assimilation of complex concepts. It should be noted that the only thing required for doctors to access this Virtual Campus is a device with Internet access (such as cell phones, tablets or computers) and it will provide them with a variety of multimedia resources such as explanatory videos and interactive summaries. Also, this program includes a comprehensive Masterclass, led by a renowned International Guest Director with maximum experience in Palliative Care.

This **Postgraduate Certificate in Nutrition in Palliative Care Patients** contains the most complete and up-to-date scientific program on the market. The most important features include:

- ♦ Practical cases presented by experts in Palliative Care
- ♦ The graphic, schematic and eminently practical contents with which it is conceived gather scientific and practical information on those disciplines that are indispensable for professional practice
- ♦ Practical exercises where the self-assessment process can be carried out to improve learning
- ♦ Its special emphasis on innovative methodologies
- ♦ Theoretical lessons, questions to the expert, debate forums on controversial topics, and individual reflection assignments
- ♦ Content that is accessible from any fixed or portable device with an Internet connection



Get up to date in an exclusive and exhaustive way with the very complete Masterclass that TECH offers you together with a renowned International Guest Director"



You will delve into the various modalities of Artificial Nutrition and how to apply them effectively to Palliative Patients"

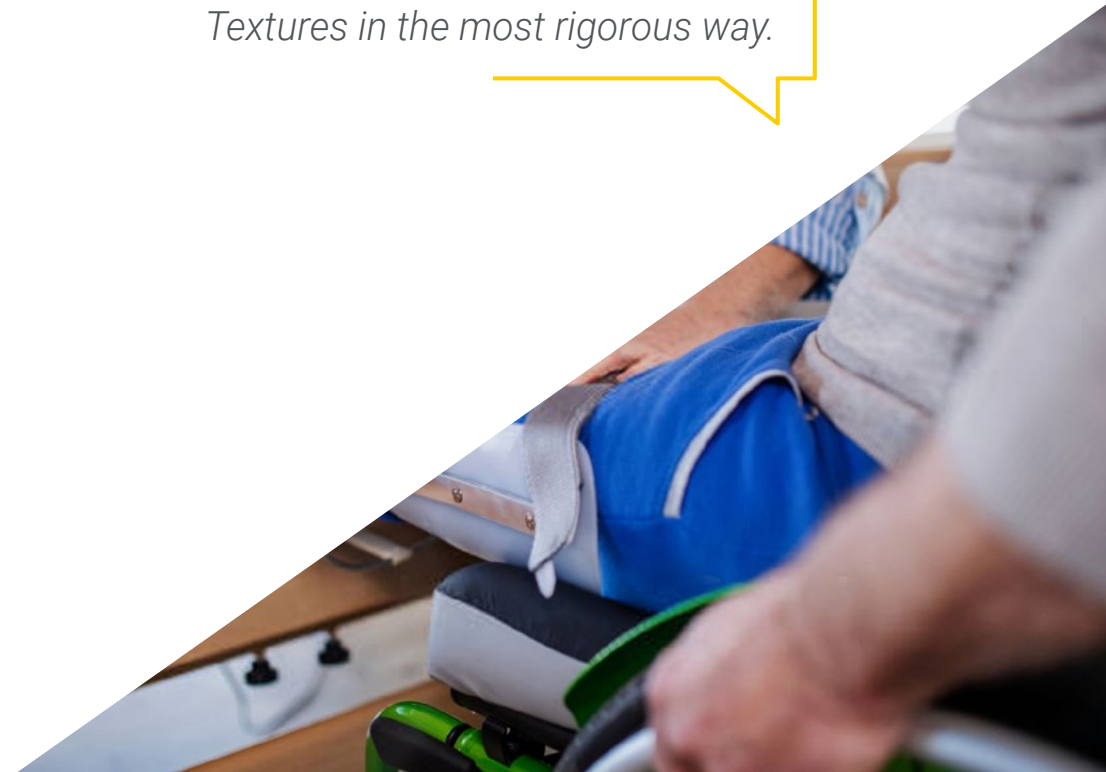
The program's teaching staff includes professionals from the sector who contribute their work experience to this specializing program, as well as renowned specialists from leading societies and prestigious universities.

The multimedia content, developed with the latest educational technology, will provide the professional with situated and contextual learning, i.e., a simulated environment that will provide immersive education programmed to learn in real situations.

This program is designed around Problem-Based Learning, whereby the professional must try to solve the different professional practice situations that arise during the course. For this purpose, students will be assisted by an innovative interactive video system created by renowned and experienced experts.

You will develop advanced clinical skills through real cases and resolution of complex situations in simulated learning environments.

TECH's exclusive Relearning system will allow you to update your knowledge on Diets with Adapted Textures in the most rigorous way.



02 Objectives

With this revolutionary program, Medical professionals will have a solid understanding of the specific nutritional needs of Palliative Patients; considering their symptoms and health conditions. Likewise, graduates will detect common nutritional challenges in these individuals (loss of appetite, Dysphagia, etc.) and develop strategies to manage them appropriately. In tune with this, they will handle the different methods of administration of Artificial Nutrition and its application in the care of terminal users. Specialists will also acquire skills to monitor the nutritional status of their patients over time and adjust feeding plans accordingly.



“

You will acquire skills to identify common nutritional challenges in palliative care patients and design strategies to effectively address them"



General Objectives

- ♦ Have a solid understanding of the fundamentals and models of care in palliative care, as well as aspects such as epidemiology or pathophysiology of chronic diseases
- ♦ Enhance clinical skills for the comprehensive assessment of patients, including the management of complex symptoms and the approach to total suffering
- ♦ Adopt an individualized approach to care, focusing on both the preferences and values of users, respecting their autonomy at all stages of pathology
- ♦ Obtain empathetic and effective communication skills with both affected individuals and their families
- ♦ Apply knowledge of specific nutrition to improve prognosis and reduce complications in patients with advanced disease
- ♦ Keep abreast of innovations in matters such as diagnostic and therapeutic techniques most relevant to the follow-up of palliative patients





Specific Objectives

- Acquire competences to diagnose malnutrition in palliative patients from early stages
- Perform an optimal approach to Cachexia and Sarcopenia
- Have a deep understanding of the types of diets depending on the pathology
- Master the method of average nutrition



You will have at your disposal a wide range of didactic resources to reinforce the concepts with dynamism, including interactive summaries, specialized readings or case studies"

03

Course Management

TECH's objective is that anyone can access its university programs, characterized by being the most complete and updated in the market. It therefore carefully chooses the members of its various teaching staffs. For this program, it brings together experts with extensive experience in Nutrition in Palliative Care Patients, who have also worked in prestigious hospitals. In this way, these specialists have improved the quality of life of numerous terminally ill patients. Therefore, graduates have the guarantees they demand to access a high quality experience that will optimize their clinical practice in an outstanding way.





“

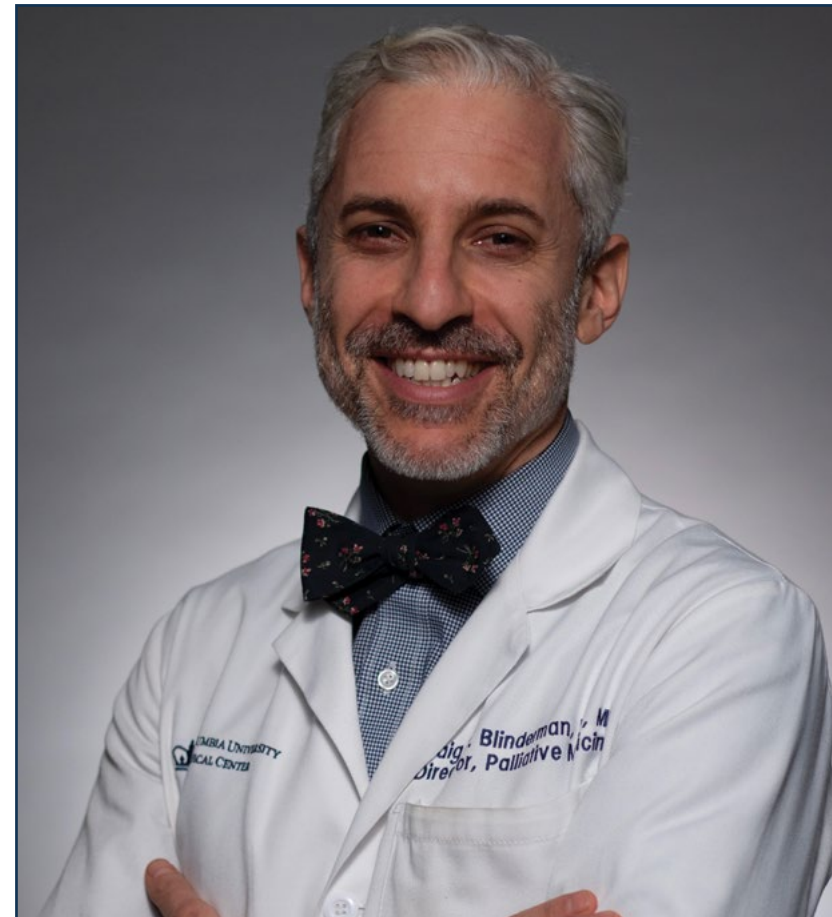
A teaching team specialized in Nutrition in Palliative Care Patients will pour their exhaustive knowledge of this health field into the didactic materials that make up this program"

Guest Director/International Guest Director

Dr. Blinderman is Associate Professor of Medicine and **Director of the Adult Palliative Medicine Service at Columbia University Medical Center/New York-Presbyterian Hospital**. He was previously an attending physician on the Palliative Care Service at Massachusetts General Hospital and co-directed the MGH Cancer Pain Clinic from 2007-2010.

He has published numerous original articles, reviews and chapters in the following areas: palliative care, early palliative care in lung cancer patients, palliative care for the dying patient, medical ethics, existential distress, symptom assessment and quality of life in patients with chronic pulmonary and heart failure, as well as cancer pain management and pain management in patients with a history of substance abuse. He is currently the editor of the Case Discussions section of the Journal of Palliative Medicine.

His academic resume includes an **MD in Medical School for International Health** from Ben Gurion University, as well as a **BA in Chemistry from Boston University**, a degree he earned Magna Cum Laude.



Dr. Blinderman, Craig David

- Specialist in Palliative Care at Massachusetts General Hospital
- Professor of Medicine at Harvard Medical School
- Degree in Chemistry, Boston University
- Associate Professor of the Department of Medicine from Columbia University

“

Thanks to TECH you will be able to learn with the best professionals in the world"

Management



Dr. Lafuente Sanchis, Manuel Pablo

- ♦ Head of the Home Hospitalization and Palliative Care Service at La Ribera University Hospital, Valencia
- ♦ Specialist in Family and Community Medicine at the Virgen de los Lirios Hospital, Alcoy
- ♦ Clinical Simulation Instructor, Catholic University of Murcia
- ♦ University Professor in Nursing Studies
- ♦ Expert in Palliative Care, International University of La Rioja
- ♦ University Expert in University Teaching from the Catholic University of Valencia
- ♦ Degree in Medicine and Surgery from the University of Valencia
- ♦ Member of: Spanish Society of Home Hospitalization and Spanish Society of Clinical Simulation

Professors

Dr. Martín Marco, Antonio

- ♦ Internal Medicine Specialist at Arnau de Vilanova Hospital, Valencia
- ♦ Attending Physician in the Home Hospitalization and Palliative Care Unit
- ♦ Head of Teaching and Research in the Palliative Care in Unit
- ♦ Master's Degree in Emergency Medical Care
- ♦ Master's Degree in Emergency Medical Care
- ♦ Degree in Medicine and Surgery from the University of Zaragoza.
- ♦ Member of: Spanish Society of Medical Oncology and Spanish Society of Internal Medicine



04

Structure and Content

Thanks to this program, physicians will have a solid understanding of the particularities of nutrition in terminally ill patients. The program will look at specific diets such as Hyperproteic, Restrictive or Hypercaloric diets. In this way, specialists will develop food plans that include the necessary nutrients to optimize the well-being of patients. In this line, the didactic materials will provide the graduates with the most adequate nutritional regimens for a variety of conditions such as Tumor Cachexias, Anemias, Dysphagia, COPD or Diabetes Mellitus. Likewise, the syllabus will delve into the keys for specialists to manage Artificial Nutrition effectively



“

A very complete and updated syllabus, configured as a high quality specialization tool of exceptional quality in the field of Nutrition in terminally ill patients"

Module 1. Nutrition in Palliative Care Patients

- 1.1. Disease-related Malnutrition
 - 1.1.1. Diagnosis
 - 1.1.2. Monitoring
 - 1.1.3. Treatment
- 1.2. Tumor Cachexia
 - 1.2.1. Diagnosis
 - 1.2.2. Monitoring
 - 1.2.3. Treatment
- 1.3. Specific Diets
 - 1.3.1. Hyperproteic
 - 1.3.2. Hypercaloric
 - 1.3.3. Restrictive
- 1.4. Diets for the Treatment of Anemias
 - 1.4.1. What do They Consist of?
 - 1.4.2. Iron Deficiency
 - 1.4.3. Megaloblastic Anemia
- 1.5. Objectives of Diabetes Mellitus Control
 - 1.5.1. Management in Special Situations (Fasting, Vomiting)
 - 1.5.2. Blood Sugar Levels
 - 1.5.3. Treatment
- 1.6. Diets for Specific Pathologies
 - 1.6.1. Chronic Heart Failure (CHF)
 - 1.6.2. COPD
 - 1.6.3. Liver Failure
 - 1.6.4. Renal Insufficiency
- 1.7. Dysphagia
 - 1.7.1. Diagnosis
 - 1.7.2. Diets with Adapted Textures
 - 1.7.3. Monitoring





- 1.8. Nutrition by SNG/PEG
 - 1.8.1. Types of Tubes
 - 1.8.2. Artificial Nutrition
 - 1.8.3. Treatment
 - 1.8.4. Monitoring
- 1.9. Interactions Between Nutrition and Drugs
 - 1.9.1. Incompatibilities
 - 1.9.2. Treatment Adjustments
 - 1.9.3. Monitoring
- 1.10. Hydration at the End of Life
 - 1.10.1. Medical Aspects
 - 1.10.2. Legal Aspects

“

If you have set the goal of updating your knowledge on Nutrition in Palliative Care Patients, TECH gives you the opportunity to achieve it while combining it with the rest of your responsibilities. Enroll now!”

05

Methodology

This academic program offers students a different way of learning. Our methodology uses a cyclical learning approach: **Relearning**.

This teaching system is used, for example, in the most prestigious medical schools in the world, and major publications such as the **New England Journal of Medicine** have considered it to be one of the most effective.



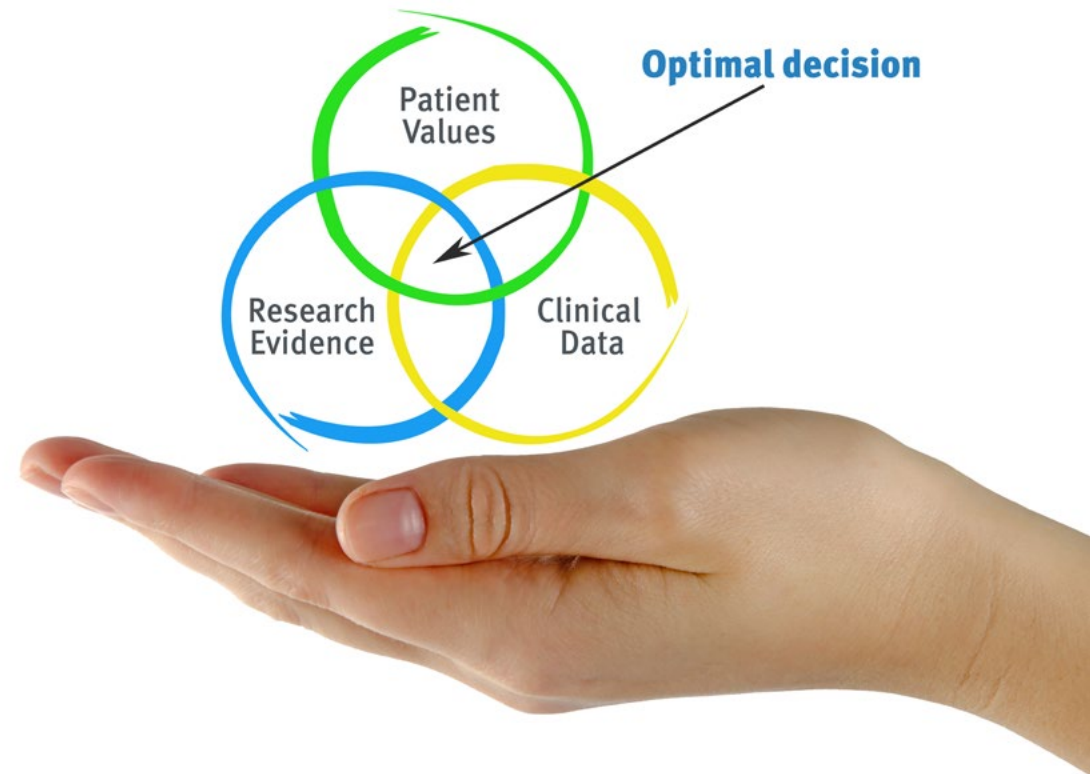
“

Discover Relearning, a system that abandons conventional linear learning, to take you through cyclical teaching systems: a way of learning that has proven to be extremely effective, especially in subjects that require memorization"

At TECH we use the Case Method

What should a professional do in a given situation? Throughout the program, students will face multiple simulated clinical cases, based on real patients, in which they will have to do research, establish hypotheses, and ultimately resolve the situation. There is an abundance of scientific evidence on the effectiveness of the method. Specialists learn better, faster, and more sustainably over time.

With TECH you will experience a way of learning that is shaking the foundations of traditional universities around the world.



According to Dr. Gérvas, the clinical case is the annotated presentation of a patient, or group of patients, which becomes a "case", an example or model that illustrates some peculiar clinical component, either because of its teaching power or because of its uniqueness or rarity. It is essential that the case is based on current professional life, trying to recreate the real conditions in the physician's professional practice.

“

Did you know that this method was developed in 1912, at Harvard, for law students? The case method consisted of presenting students with real-life, complex situations for them to make decisions and justify their decisions on how to solve them. In 1924, Harvard adopted it as a standard teaching method”

The effectiveness of the method is justified by four fundamental achievements:

1. Students who follow this method not only achieve the assimilation of concepts, but also a development of their mental capacity, through exercises that evaluate real situations and the application of knowledge.
2. Learning is solidly translated into practical skills that allow the student to better integrate into the real world.
3. Ideas and concepts are understood more efficiently, given that the example situations are based on real-life.
4. Students like to feel that the effort they put into their studies is worthwhile. This then translates into a greater interest in learning and more time dedicated to working on the course.



Relearning Methodology

At TECH we enhance the case method with the best 100% online teaching methodology available: Relearning.

This university is the first in the world to combine the study of clinical cases with a 100% online learning system based on repetition, combining a minimum of 8 different elements in each lesson, a real revolution with respect to the mere study and analysis of cases.

Professionals will learn through real cases and by resolving complex situations in simulated learning environments. These simulations are developed using state-of-the-art software to facilitate immersive learning.



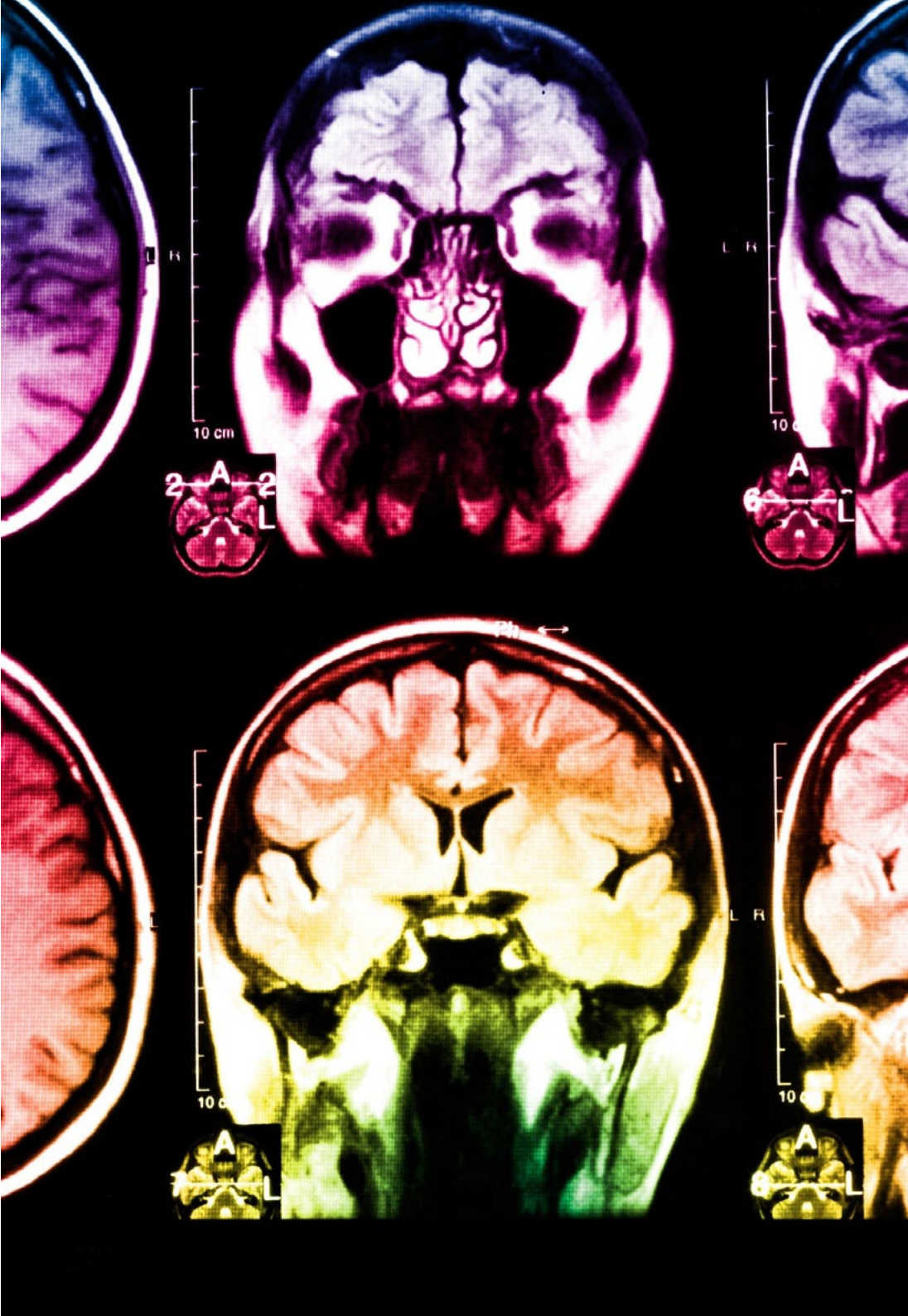
At the forefront of world teaching, the Relearning method has managed to improve the overall satisfaction levels of professionals who complete their studies, with respect to the quality indicators of the best online university (Columbia University).

With this methodology, more than 250,000 physicians have been trained with unprecedented success in all clinical specialties regardless of surgical load. Our pedagogical methodology is developed in a highly competitive environment, with a university student body with a strong socioeconomic profile and an average age of 43.5 years old.

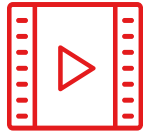
Relearning will allow you to learn with less effort and better performance, involving you more in your specialization, developing a critical mindset, defending arguments, and contrasting opinions: a direct equation to success.

In our program, learning is not a linear process, but rather a spiral (learn, unlearn, forget, and re-learn). Therefore, we combine each of these elements concentrically.

The overall score obtained by TECH's learning system is 8.01, according to the highest international standards.



This program offers the best educational material, prepared with professionals in mind:



Study Material

All teaching material is produced by the specialists who teach the course, specifically for the course, so that the teaching content is highly specific and precise.

These contents are then applied to the audiovisual format, to create the TECH online working method. All this, with the latest techniques that offer high quality pieces in each and every one of the materials that are made available to the student.



Surgical Techniques and Procedures on Video

TECH introduces students to the latest techniques, the latest educational advances and to the forefront of current medical techniques. All of this in direct contact with students and explained in detail so as to aid their assimilation and understanding. And best of all, you can watch the videos as many times as you like.



Interactive Summaries

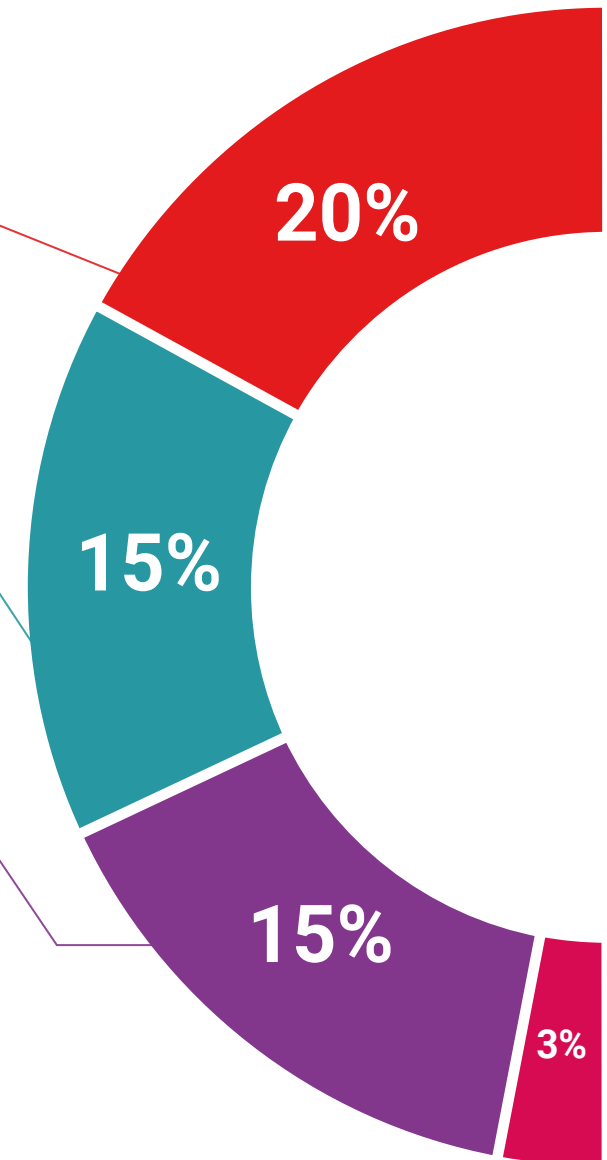
The TECH team presents the contents attractively and dynamically in multimedia lessons that include audio, videos, images, diagrams, and concept maps in order to reinforce knowledge.

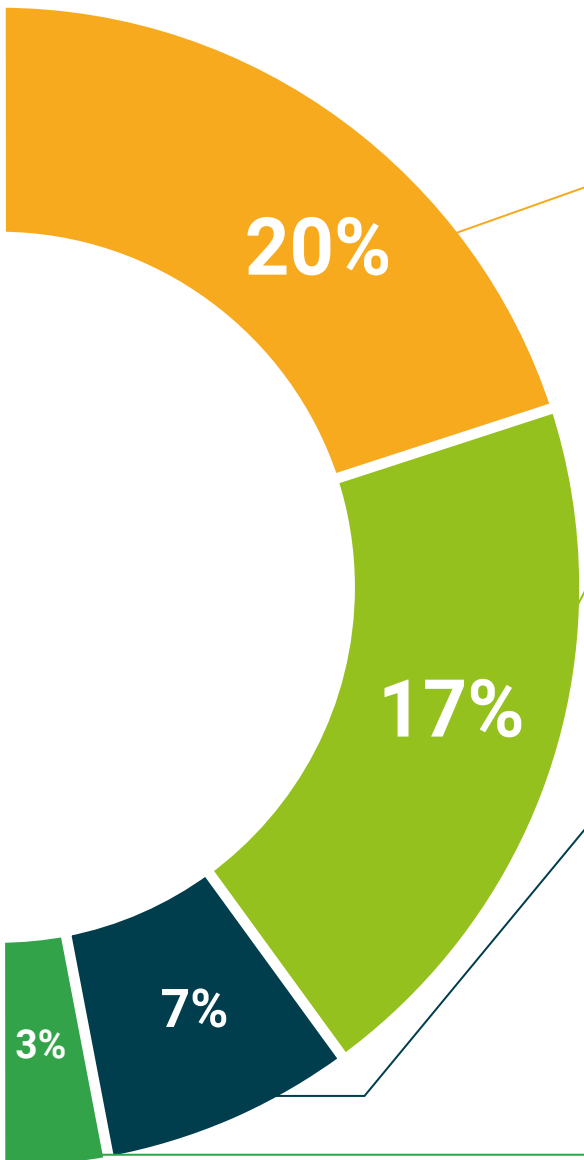
This exclusive educational system for presenting multimedia content was awarded by Microsoft as a "European Success Story".



Additional Reading

Recent articles, consensus documents and international guidelines, among others. In TECH's virtual library, students will have access to everything they need to complete their course.





Expert-Led Case Studies and Case Analysis

Effective learning ought to be contextual. Therefore, TECH presents real cases in which the expert will guide students, focusing on and solving the different situations: a clear and direct way to achieve the highest degree of understanding.



Testing & Retesting

We periodically evaluate and re-evaluate students' knowledge throughout the program, through assessment and self-assessment activities and exercises, so that they can see how they are achieving their goals.



Classes

There is scientific evidence on the usefulness of learning by observing experts. The system known as Learning from an Expert strengthens knowledge and memory, and generates confidence in future difficult decisions.



Quick Action Guides

TECH offers the most relevant contents of the course in the form of worksheets or quick action guides. A synthetic, practical, and effective way to help students progress in their learning.



06 Certificate

The Postgraduate Certificate in Nutrition in Palliative Care Patients guarantees students, in addition to the most rigorous and up-to-date education, access to a Postgraduate Certificate issued by TECH Global University.



“

Successfully complete this program and receive your university qualification without having to travel or fill out laborious paperwork”

This private qualification will allow you to obtain a **Postgraduate Certificate in Nutrition in Palliative Care Patients** endorsed by **TECH Global University**, the world's largest online university.

TECH Global University is an official European University publicly recognized by the Government of Andorra ([official bulletin](#)). Andorra is part of the European Higher Education Area (EHEA) since 2003. The EHEA is an initiative promoted by the European Union that aims to organize the international training framework and harmonize the higher education systems of the member countries of this space. The project promotes common values, the implementation of collaborative tools and strengthening its quality assurance mechanisms to enhance collaboration and mobility among students, researchers and academics.

This **TECH Global University** private qualification is a European program of continuing education and professional updating that guarantees the acquisition of competencies in its area of knowledge, providing a high curricular value to the student who completes the program.

Title: **Postgraduate Certificate in Nutrition in Palliative Care Patients**

Modality: **online**

Duration: **6 weeks**

Accreditation: **6 ECTS**



future
health confidence people
education information tutors
guarantee accreditation teaching
institutions technology learning
community commitment



Postgraduate Certificate

Nutrition in Palliative Care Patients

- » Modality: online
- » Duration: 6 weeks
- » Certificate: TECH Global University
- » Credits: 6 ECTS
- » Schedule: at your own pace
- » Exams: online

Postgraduate Certificate

Nutrition in Palliative Care Patients

