

Postgraduate Certificate Dysphagia Assessment





Postgraduate Certificate Dysphagia Assessment

- » Modality: online
- » Duration: 6 weeks
- » Certificate: TECH Global University
- » Credits: 6 ECTS
- » Schedule: at your own pace
- » Exams: online

Website: www.techtute.com/us/medicine/postgraduate-certificate/dysphagia-assessment

Index

01

Introduction

p. 4

02

Objectives

p. 8

03

Course Management

p. 12

04

Structure and Content

p. 16

05

Methodology

p. 20

06

Certificate

p. 28

01

Introduction

Scientific studies carried out in different health areas have allowed a better understanding of the causes of Dysphagia and the evaluation procedures. In this way, these advances have enabled professionals to improve diagnostic accuracy and design more personalized treatment plans. The whole process starts with the identification and assessment of the disorder itself, where techniques and methods have also been improved. For this reason, TECH has developed this 100% online university proposal that provides specialists with a complete update on evaluation procedures. For this purpose, it has advanced pedagogical tools and a syllabus based on the latest medical evidence, accessible 24 hours a day, from any electronic device with an Internet connection.



“

*Get a complete update in just 6 weeks on
the methods of Dysphagia Assessment”*

The development of more precise assessment instruments, better understanding of the symptoms associated with Dysphagia through clinical studies, and the improvement of complementary tests have favored the differential diagnosis of this disorder. In this way, the multidisciplinary nature of scientific research, as well as the daily work with patients, has favored optimal results in this initial process.

For this reason, it is essential for medical professionals to be aware of the most notorious advances in this field, as well as those processes used by other areas such as speech therapy. Under this approach arises this Postgraduate Certificate in Dysphagia Assessment of 180 teaching hours.

A program whose 6-week educational journey will lead the graduate to obtain an effective update on the identification of risk factors, the determination of swallowing efficiency and an overall assessment of the patient in order to improve swallowing function and quality of life of patients.

All this, moreover, with innovative teaching material and a Relearning method that favors the consolidation of the key concepts addressed and reduces the long hours of study and memorization that are so frequent in other pedagogical systems.

Undoubtedly, the professionals are, in this way, in front of an exceptional opportunity to obtain a complete update through a program that can be taken whenever and wherever they wish. All you need is a cell phone, tablet or computer with an Internet connection to consult, at any time of the day, the content of this program. In this way, with no classroom attendance or fixed class schedules, the students have an educational option that is compatible with their most demanding responsibilities.

This **Postgraduate Certificate in Dysphagia Assessment** contains the most complete and up-to-date scientific program on the market. The most important features include:

- The development of practical cases presented by experts in Otorhinolaryngology and Speech Therapy
- The graphic, schematic, and practical contents with which they are created, provide scientific and practical information on the disciplines that are essential for professional practice
- Practical exercises where self-assessment can be used to improve learning
- Its special emphasis on innovative methodologies
- Theoretical lessons, questions to the expert, debate forums on controversial topics, and individual reflection assignments
- Content that is accessible from any fixed or portable device with an Internet connection



TECH adapts to your professional needs and has designed a flexible and 100% online university program"

“

Get an update on your knowledge of the Clinical Examination Volume-Viscosity (MECV-V)”

The program's teaching staff includes professionals from the field who contribute their work experience to this educational program, as well as renowned specialists from leading societies and prestigious universities.

The multimedia content, developed with the latest educational technology, will provide the professional with situated and contextual learning, i.e., a simulated environment that will provide immersive education programmed to learn in real situations.

This program is designed around Problem-Based Learning, whereby the professional must try to solve the different professional practice situations that arise during the educational year. For this purpose, the students will be assisted by an innovative interactive video system created by renowned and experienced experts.

A Virtual Library is available 24 hours a day, 7 days a week.

Delve from the comfort of your home into the assessment of the anatomical structures involved in swallowing and the latest scientific evidence.



02 Objectives

The goal of this educational option is to provide the specialists with an update of their skills to perform comprehensive and accurate assessments and evaluations of patients with Dysphagia. All this, integrating in its clinical practice the most advanced and perfected procedures to determine the type and degree of this disorder and the risk factors. All this, in addition, in an educational process of updating through the best teaching material of the present educational landscape.





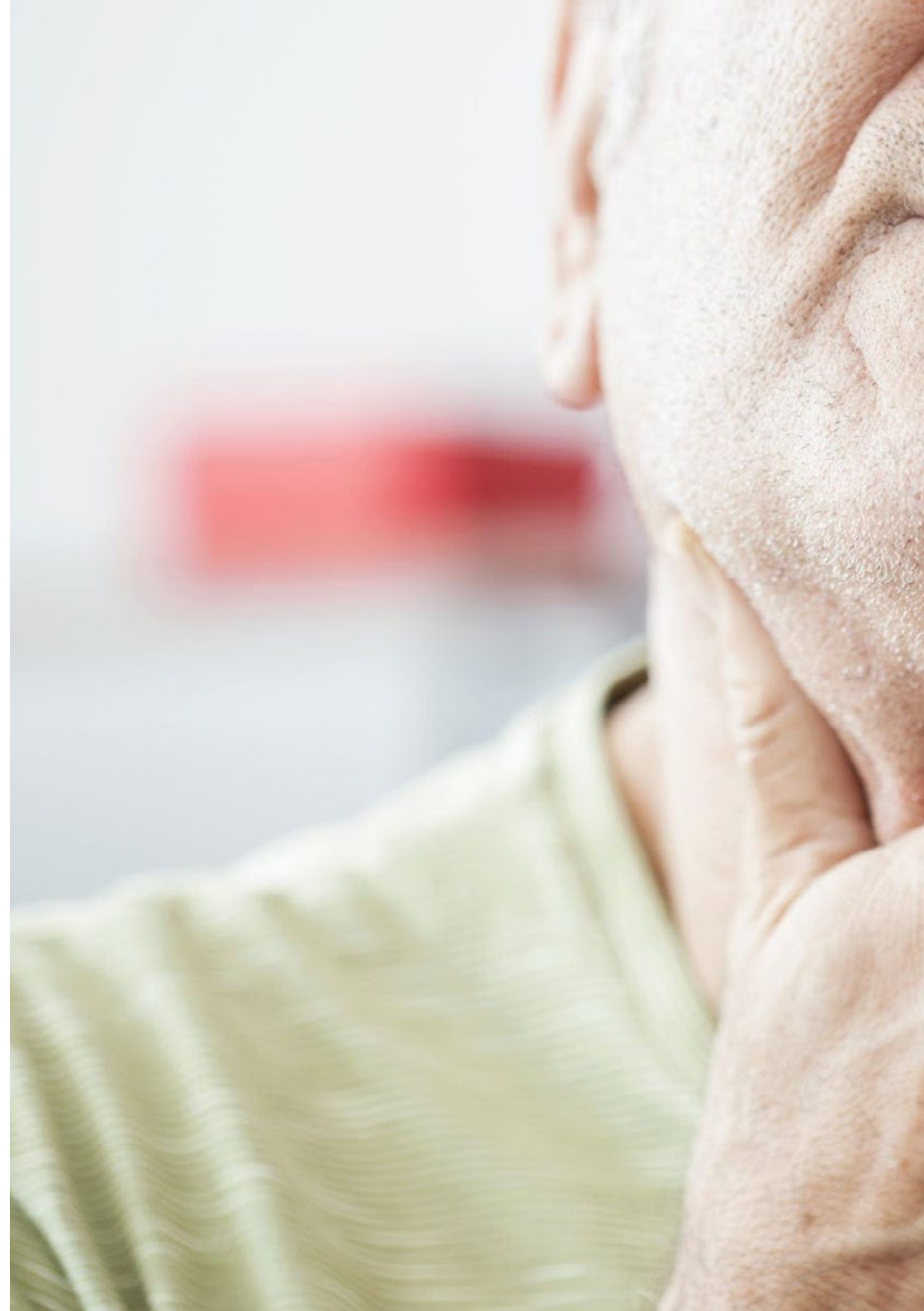
“

Integrate the most current pharyngolaryngeal assessment methods into your clinical practice”



General Objectives

- Update theoretical and practical knowledge about Dysphagia
- Develop clinical assessment skills
- Design and implement treatment plans according to the most current procedures
- Delve into the most up-to-date technologies and techniques
- Encourage interdisciplinary collaboration





Specific Objectives

- Delve into the different evaluation approaches and methods used in the field
- Identify the instrumental tests used in the evaluation of Dysphagia
- Learn how to interpret clinical assessment findings



Inquire whenever and wherever you wish into the different assessment approaches and methods used in the field"

03

Course Management

In its commitment to offer high quality programs, TECH carries out a meticulous selection process of the professionals that integrate its programs. In this way, the graduate will have access to a syllabus prepared by experts in the diagnosis and approach to patients with Dysphagia. Their extensive background in this field is also evident throughout this educational journey. Furthermore, given its proximity, the students will have the opportunity to resolve any doubts they may have about the content of this Postgraduate Certificate.





“

Solve any doubts you may have about the content of this Postgraduate Certificate with the excellent team of professionals that make it up”

International Guest Director

Julie Stierwalt, M.D., is a leading consultant in the Division of Speech Pathology within the Department of Neurology at the Mayo Clinic in Rochester. With an outstanding track record in the diagnosis and treatment of Speech, Language, Cognitive and Swallowing Disorders, she has set a standard of excellence in her field. Her clinical focus has been on optimizing communication for people with both acute and progressive conditions.

She has also been recognized internationally for her research and contributions in areas such as Aphasia, Frontotemporal Dementia, Amyotrophic Lateral Sclerosis (ALS) and Functional Speech Disorders. In fact, her publications in high impact scientific journals have provided valuable insights into the treatment and diagnosis of these disorders, significantly influencing clinical practice and health policy. In addition, her interest in telepractice has been crucial in expanding access to Speech Pathology services, especially in times of pandemic.

She has also been the recipient of numerous awards and honors throughout her career, including the Leadership Award from the College of Communication and Information at Florida State University, as well as her appointment as a Fellow of the American Speech-Language-Hearing Association (ASHA). In this way, with her unwavering commitment to improving the communication and quality of life of her patients, Dr. Julie Stierwalt has become a key figure in the field of Speech Pathology, as well as an international reference in the treatment of Speech, Language and Swallowing Disorders. In this regard, her work continues to inspire healthcare professionals and benefit countless patients around the world.



Dr. Stierwalt, Julie

- Consultant for the Division of Speech Pathology, Department of Neurology, Mayo Clinic, United States
- Speech-Language Pathologist at the Mayo Clinic
- Specialist in Neurological Disorders of Communication
- PhD in Speech-Language Pathology from the University of Iowa
- Master's Degree in Speech Pathology, University of Northern Iowa
- B.S. in Speech Pathology, University of Northern Iowa
- Member of: Alternative and Augmentative Communication Task Force (Division of Speech Pathology), Cognitive Evaluation Committee (Division of Speech Pathology), Dysphagia Research Society, American Speech-Language-Hearing Association

“

Thanks to TECH, you will be able to learn with the best professionals in the world”

Management



Dr. Maeso i Riera, Josep

- Director of the Otorhinolaryngology Section of the Otorhinolaryngology Ophthalmology Center of Egara
- Assistant Physician of the Otorhinolaryngology Service in the Head and Neck Section of the Mútua de Terrass University Hospital
- Physician in charge of the Dacryology Section (Ophthalmology Service) of the Delfos Medical Center
- Head of the Otorhinolaryngology Department at Sanitas CIMA Hospital
- Collaborating physician in the Otorhinolaryngology office of the Sanitas offices
- Specialist in Otorhinolaryngology
- Doctor in Medicine and Surgery from the Autonomous University of Barcelona
- Degree in Medicine and Surgery from the Autonomous University of Barcelona
- Diploma in Hospital Management from the School of Business Administration and Management
- Member of: Catalan Society of Oto-Rhino-Laryngology, Spanish Society of Otolaryngology and Cervico-Facial Pathology, and American Academy of Otolaryngology-Head and Neck Surgery



Ms. Marcos Galán, Victoria

- Director of the Crecemos contigo center and Neuro-logist
- Specialist in Voice Pathology and Myofunctional Therapy
- Professor, Department of Physiotherapy in Health Sciences, Castilla La Mancha University
- Trainer in health specialization courses in Speech Therapy Intervention
- Specialist in Voice Pathology from the University of Alcalá de Henares
- Degree in Speech Therapy from the Complutense University of Madrid



04

Structure and Content

Thanks to the effectiveness of the Relearning method, the graduate who takes this university program will not have to dedicate long hours to study and will obtain a much more agile process of updating knowledge. This will be possible due to the continuous reiteration throughout the academic itinerary of the most determinant concepts on Dysphagia Assessment. Furthermore, the extensive teaching material provided by TECH will allow you to obtain a complete update in a very short time.

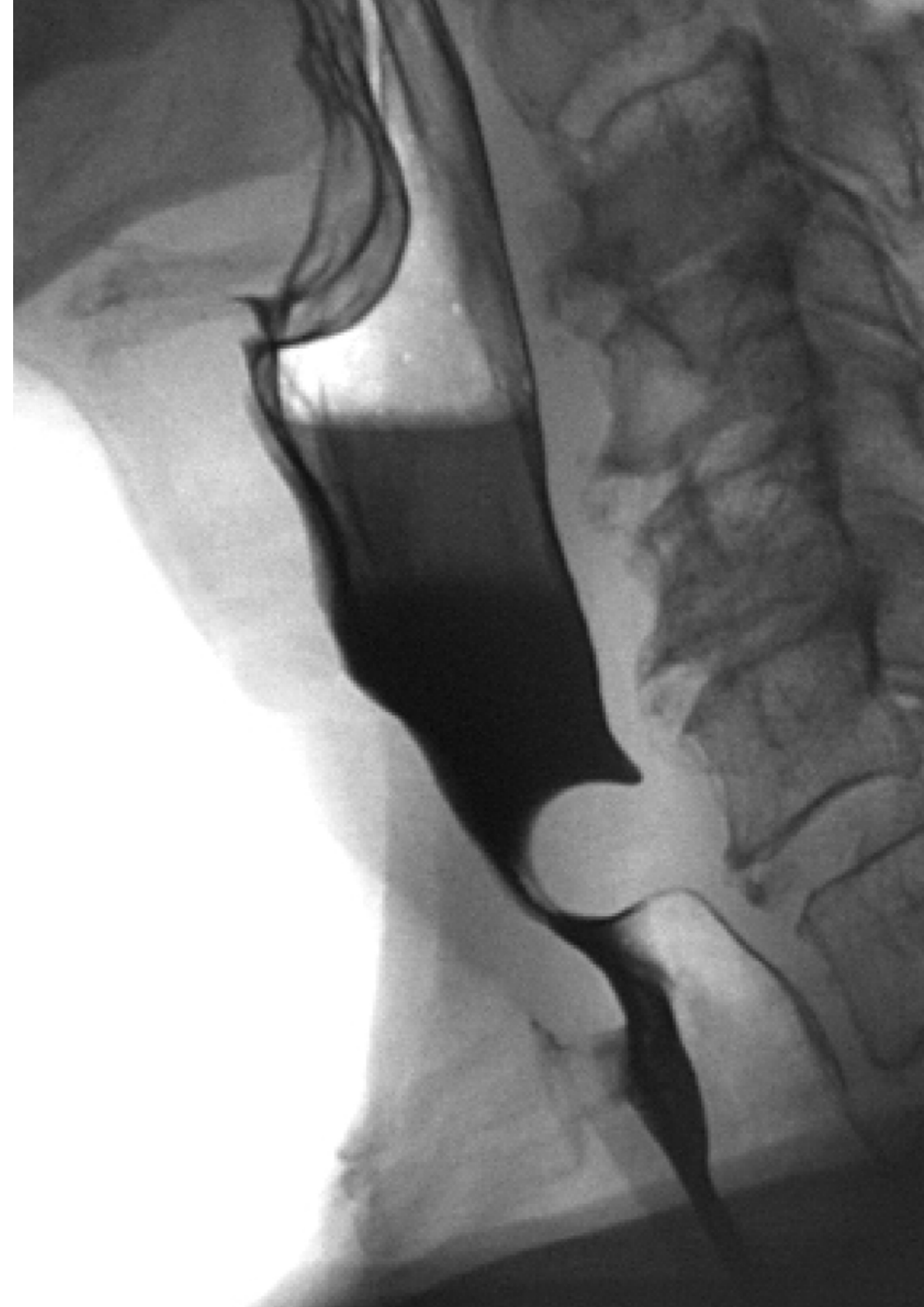




Get an update on the clinical assessment of Dysphagia with a syllabus that offers a theoretical and practical perspective"

Module 1. Assessment of Dysphagia

- 1.1. Detection of Dysphagia Symptoms
 - 1.1.1. Coughing During or Immediately after Eating
 - 1.1.2. Voice Changes
 - 1.1.3. Drooling and Difficulty in Controlling Salivation
 - 1.1.4. Difficulty in Forming the Alimentary Bolus
 - 1.1.5. Fractionated Swallowing
 - 1.1.6. Post-Deglutition Waste
 - 1.1.7. Increased Eating Time
 - 1.1.8. Fever
 - 1.1.9. Progressive Weight Loss
 - 1.1.10. Malnutrition and Dehydration
- 1.2. Initial Assessment of Dysphagia and Associated Symptoms
 - 1.2.1. Location of Symptoms
 - 1.2.2. Types of Food that Produce It
 - 1.2.3. Duration of Symptoms and Evolution
 - 1.2.4. Assessment if Progressive or Stable
 - 1.2.5. Assessment whether Continuous or Intermittent
- 1.3. Clinical Assessment of Dysphagia
 - 1.3.1. Complete Physical Examination
 - 1.3.2. Determine Risks and Swallowing Safety
 - 1.3.3. Accompanying Symptoms
 - 1.3.4. Test of Quality of Life
 - 1.3.5. Clinical Examination Volume-Viscosity (MECV-V)
- 1.4. Complementary Tests
 - 1.4.1. Rule Out Neoplasms
 - 1.4.2. Aspiration Study
 - 1.4.3. Endoscopy
 - 1.4.4. Specific Anatomical Studies
 - 1.4.5. Videofluoroscopy
 - 1.4.6. Videoendoscopy
 - 1.4.7. Magnetic Resonance
 - 1.4.8. Gastroduodenal Esophageal Transit
 - 1.4.9. Esofaogram Baryte
 - 1.4.10. Esophageal Manometry/High Resolution



- 1.4.11. Transnasal Esophagoscopy
- 1.4.12. PHmetry
- 1.4.13. Impedanciometry
- 1.5. Speech Therapy Assessment
 - 1.5.1. Myofunctional Speech Therapy Evaluation: Sucking, Salivation, Chewing, etc
 - 1.5.2. Speech-Language Assessment
 - 1.5.3. Speech Therapy Assessment
 - 1.5.4. Logopedic Assessment of Voice and Breathing
 - 1.5.5. Speech Therapy Assessment of Safe Feeding
- 1.6. Assessment of Anatomical Structures Involved in Swallowing
 - 1.6.1. Anatomophysiological Orofacial Evaluation
 - 1.6.2. Anatomophysiological Assessment of the Head and Neck
 - 1.6.3. Anatomophysiological Assessment of Thorax-Abdomen
 - 1.6.4. Conclusions
- 1.7. Assessment of the Oral Cavity of the Patient with Dysphagia
 - 1.7.1. Lip Assessment
 - 1.7.2. Tooth Assessment
 - 1.7.3. Palate Assessment
 - 1.7.4. Language Assessment
- 1.8. Pharyngolaryngeal Assessment
 - 1.8.1. Epiglottis Assessment
 - 1.8.2. Assessment of Motor Coordination in the Act of Swallowing
 - 1.8.3. General Assessment
 - 1.8.4. Conclusions
- 1.9. Sensitive Assessment
 - 1.9.1. Salivation Assessment
 - 1.9.2. Suction Assessment
 - 1.9.3. Assessment of Silent Aspiration
 - 1.9.4. Assessment of Painful Symptoms
- 1.10. Assessment of the Patient's General: Status
 - 1.10.1. Patient Understanding
 - 1.10.2. Swallowing Efficiency
 - 1.10.3. Swallowing Safety
 - 1.10.4. Motility. Sensitivity. Coordination

05

Methodology

This academic program offers students a different way of learning. Our methodology uses a cyclical learning approach: **Relearning**.

This teaching system is used, for example, in the most prestigious medical schools in the world, and major publications such as the **New England Journal of Medicine** have considered it to be one of the most effective.



“

Discover Relearning, a system that abandons conventional linear learning, to take you through cyclical teaching systems: a way of learning that has proven to be extremely effective, especially in subjects that require memorization"

At TECH we use the Case Method

What should a professional do in a given situation? Throughout the program, students will face multiple simulated clinical cases, based on real patients, in which they will have to do research, establish hypotheses, and ultimately resolve the situation. There is an abundance of scientific evidence on the effectiveness of the method. Specialists learn better, faster, and more sustainably over time.

With TECH you will experience a way of learning that is shaking the foundations of traditional universities around the world.



According to Dr. Gérvas, the clinical case is the annotated presentation of a patient, or group of patients, which becomes a "case", an example or model that illustrates some peculiar clinical component, either because of its teaching power or because of its uniqueness or rarity. It is essential that the case is based on current professional life, trying to recreate the real conditions in the physician's professional practice.

“

Did you know that this method was developed in 1912, at Harvard, for law students? The case method consisted of presenting students with real-life, complex situations for them to make decisions and justify their decisions on how to solve them. In 1924, Harvard adopted it as a standard teaching method”

The effectiveness of the method is justified by four fundamental achievements:

1. Students who follow this method not only achieve the assimilation of concepts, but also a development of their mental capacity, through exercises that evaluate real situations and the application of knowledge.
2. Learning is solidly translated into practical skills that allow the student to better integrate into the real world.
3. Ideas and concepts are understood more efficiently, given that the example situations are based on real-life.
4. Students like to feel that the effort they put into their studies is worthwhile. This then translates into a greater interest in learning and more time dedicated to working on the course.



Relearning Methodology

At TECH we enhance the case method with the best 100% online teaching methodology available: Relearning.

This university is the first in the world to combine the study of clinical cases with a 100% online learning system based on repetition, combining a minimum of 8 different elements in each lesson, a real revolution with respect to the mere study and analysis of cases.

Professionals will learn through real cases and by resolving complex situations in simulated learning environments. These simulations are developed using state-of-the-art software to facilitate immersive learning.



At the forefront of world teaching, the Relearning method has managed to improve the overall satisfaction levels of professionals who complete their studies, with respect to the quality indicators of the best online university (Columbia University).

With this methodology, more than 250,000 physicians have been trained with unprecedented success in all clinical specialties regardless of surgical load. Our pedagogical methodology is developed in a highly competitive environment, with a university student body with a strong socioeconomic profile and an average age of 43.5 years old.

Relearning will allow you to learn with less effort and better performance, involving you more in your specialization, developing a critical mindset, defending arguments, and contrasting opinions: a direct equation to success.

In our program, learning is not a linear process, but rather a spiral (learn, unlearn, forget, and re-learn). Therefore, we combine each of these elements concentrically.

The overall score obtained by TECH's learning system is 8.01, according to the highest international standards.



This program offers the best educational material, prepared with professionals in mind:



Study Material

All teaching material is produced by the specialists who teach the course, specifically for the course, so that the teaching content is highly specific and precise.

These contents are then applied to the audiovisual format, to create the TECH online working method. All this, with the latest techniques that offer high quality pieces in each and every one of the materials that are made available to the student.



Surgical Techniques and Procedures on Video

TECH introduces students to the latest techniques, the latest educational advances and to the forefront of current medical techniques. All of this in direct contact with students and explained in detail so as to aid their assimilation and understanding. And best of all, you can watch the videos as many times as you like.



Interactive Summaries

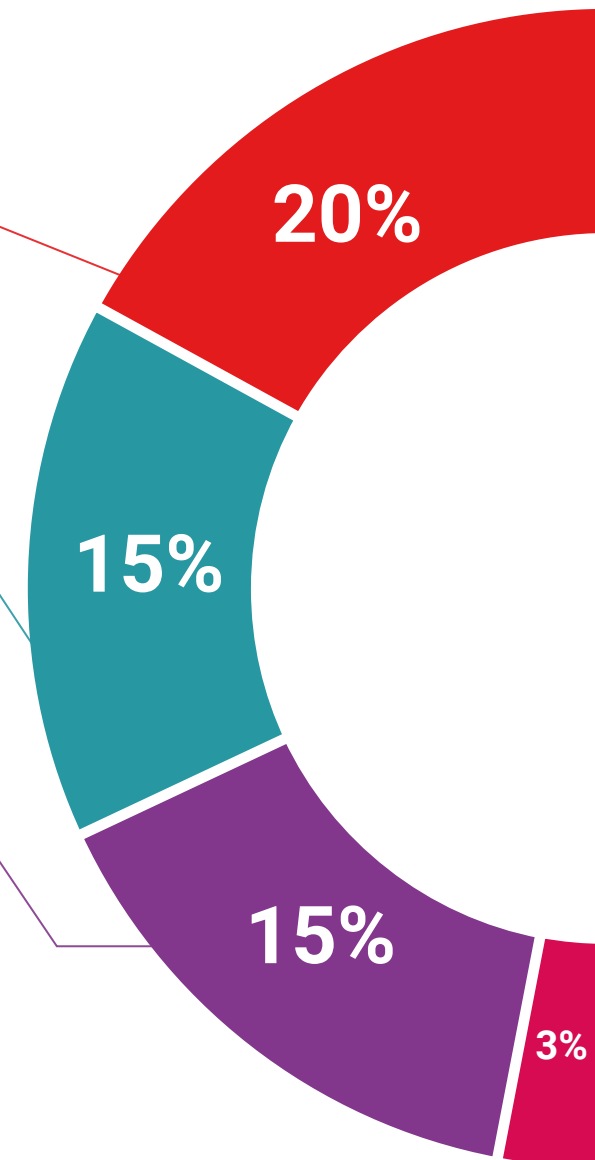
The TECH team presents the contents attractively and dynamically in multimedia lessons that include audio, videos, images, diagrams, and concept maps in order to reinforce knowledge.

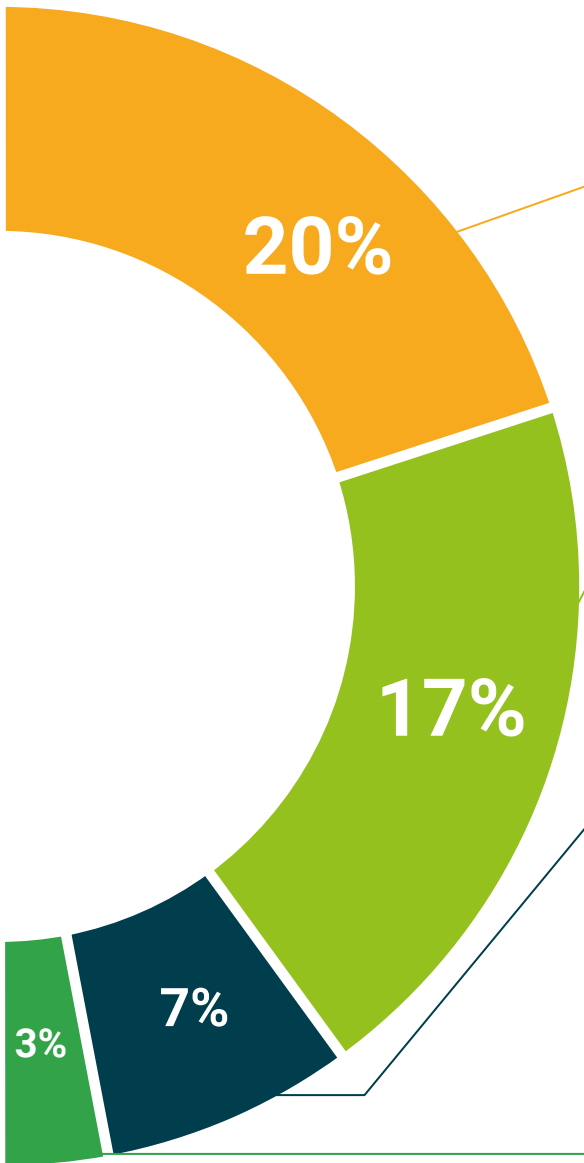
This exclusive educational system for presenting multimedia content was awarded by Microsoft as a "European Success Story".



Additional Reading

Recent articles, consensus documents and international guidelines, among others. In TECH's virtual library, students will have access to everything they need to complete their course.





Expert-Led Case Studies and Case Analysis

Effective learning ought to be contextual. Therefore, TECH presents real cases in which the expert will guide students, focusing on and solving the different situations: a clear and direct way to achieve the highest degree of understanding.



Testing & Retesting

We periodically evaluate and re-evaluate students' knowledge throughout the program, through assessment and self-assessment activities and exercises, so that they can see how they are achieving their goals.



Classes

There is scientific evidence on the usefulness of learning by observing experts. The system known as Learning from an Expert strengthens knowledge and memory, and generates confidence in future difficult decisions.



Quick Action Guides

TECH offers the most relevant contents of the course in the form of worksheets or quick action guides. A synthetic, practical, and effective way to help students progress in their learning.



06

Certificate

The Postgraduate Certificate in Dysphagia Assessment guarantees students, in addition to the most rigorous and up-to-date education, access to a Postgraduate Certificate issued by TECH Global University.





“

Successfully complete this program and receive your university qualification without having to travel or fill out laborious paperwork”

This program will allow you to obtain your **Postgraduate Certificate in Dysphagia Assessment** endorsed by **TECH Global University**, the world's largest online university.

TECH Global University is an official European University publicly recognized by the Government of Andorra ([official bulletin](#)). Andorra is part of the European Higher Education Area (EHEA) since 2003. The EHEA is an initiative promoted by the European Union that aims to organize the international training framework and harmonize the higher education systems of the member countries of this space. The project promotes common values, the implementation of collaborative tools and strengthening its quality assurance mechanisms to enhance collaboration and mobility among students, researchers and academics.

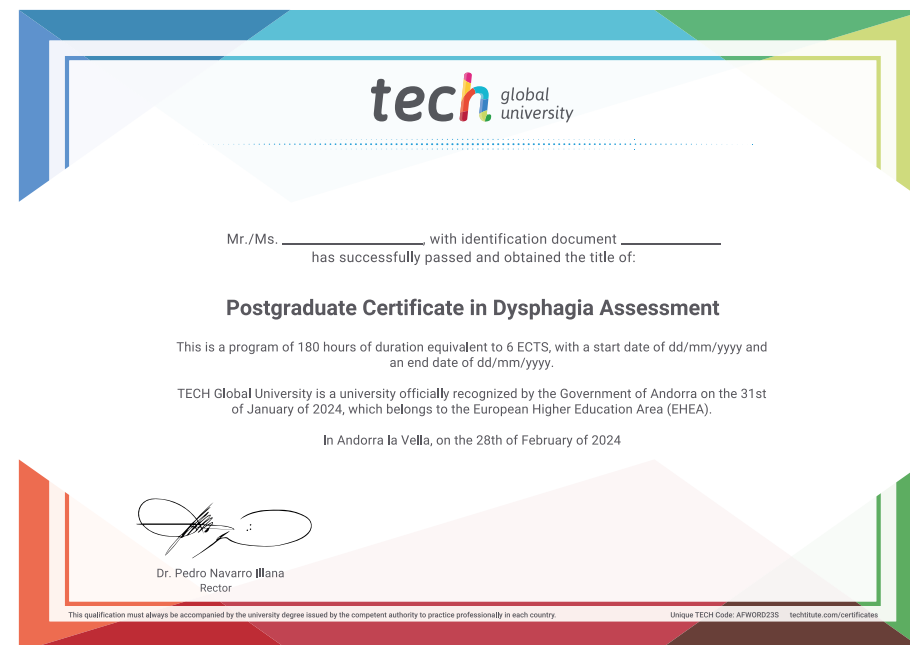
This **TECH Global University** title is a European program of continuing education and professional updating that guarantees the acquisition of competencies in its area of knowledge, providing a high curricular value to the student who completes the program.

Title: **Postgraduate Certificate in Dysphagia Assessment**

Modality: **online**

Duration: **6 weeks**

Accreditation: **6 ECTS**



*Apostille Convention. In the event that the student wishes to have their paper diploma issued with an apostille, TECH Global University will make the necessary arrangements to obtain it, at an additional cost.



Postgraduate Certificate Dysphagia Assessment

- » Modality: online
- » Duration: 6 weeks
- » Certificate: TECH Global University
- » Credits: 6 ECTS
- » Schedule: at your own pace
- » Exams: online

Postgraduate Certificate Dysphagia Assessment

