

# Postgraduate Certificate

## Clinical Evaluation of the Patient With Endometriosis





## Postgraduate Certificate Clinical Evaluation of the Patient With Endometriosis

Course Modality: **Online**

Duration: **6 weeks**

Certificate: **TECH Technological University**

**6 ECTS Credits**

Teaching Hours: **150 hours.**

Website: [www.techtitute.com/medicine/postgraduate-certificate/postgraduate-certificate-clinical-evaluation-patient-endometriosis](http://www.techtitute.com/medicine/postgraduate-certificate/postgraduate-certificate-clinical-evaluation-patient-endometriosis)

# Index

01

Introduction

---

*p. 4*

02

Objectives

---

*p. 8*

03

Course Management

---

*p. 12*

04

Structure and Content

---

*p. 16*

05

Methodology

---

*p. 20*

06

Certificate

---

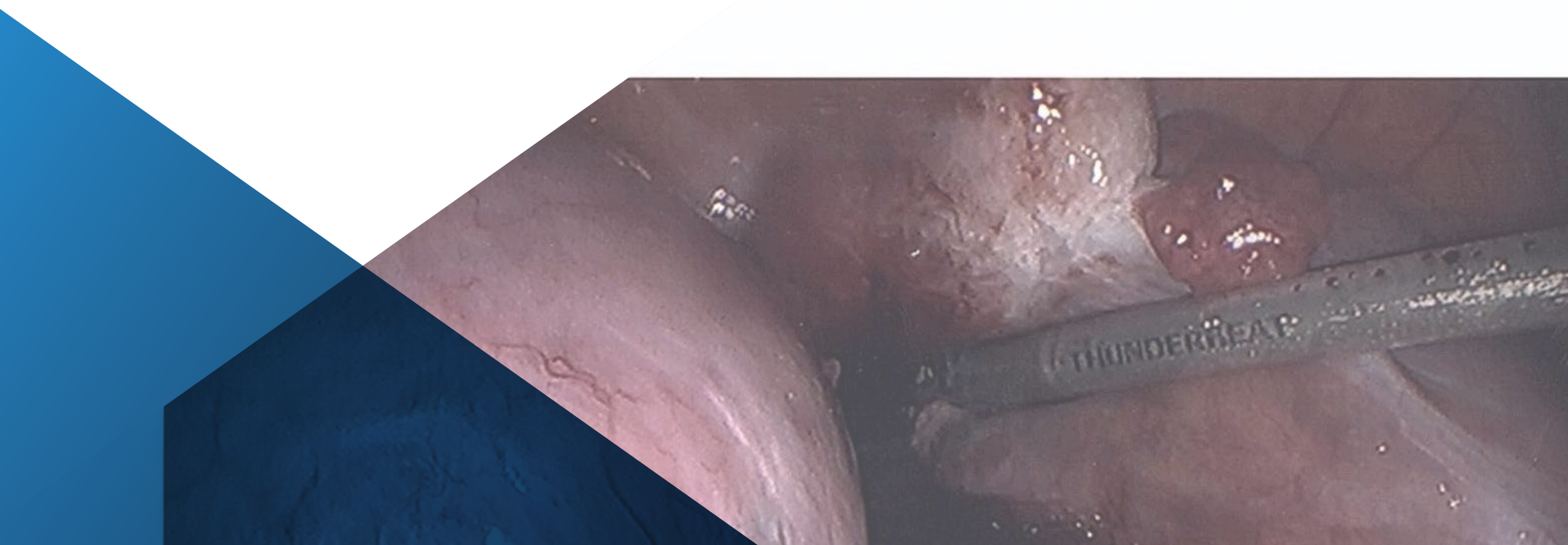
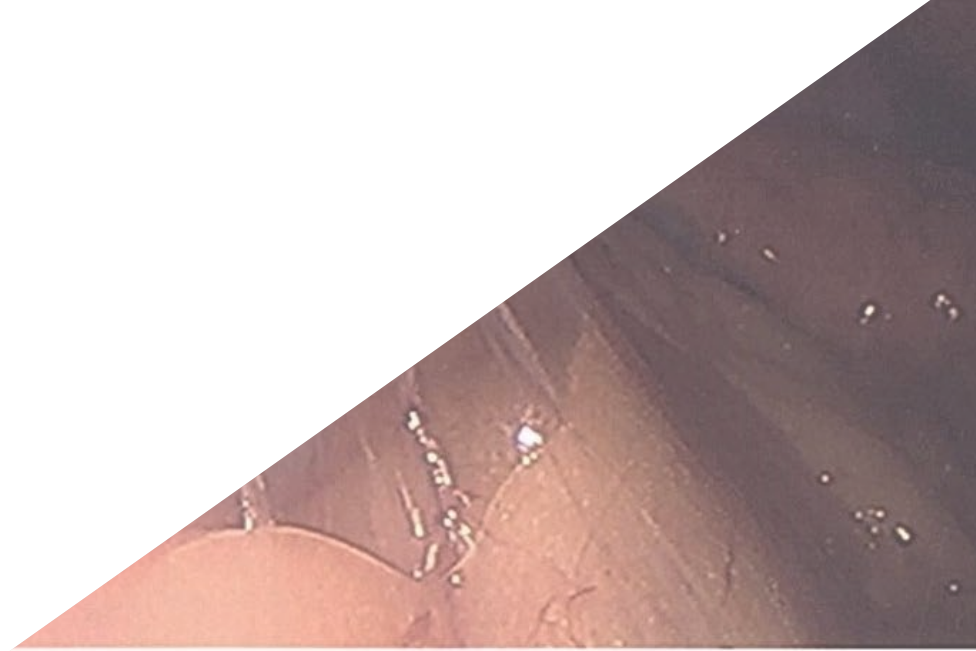
*p. 28*

# 01

# Introduction

This intensive program will deepen the clinical picture of the patient. Dysmenorrhea is the most frequent symptom, although it is very difficult to assess because of the normalization that exists in society about it. Therefore, it is necessary to know the surveys used in endometriosis in order to assess such symptomatology in an unbiased manner.

With this training you will specialize in the clinical evaluation of the patient with endometriosis, from the hand of prestigious professionals with extensive experience in the sector.



“

*With this program we want to meet your objective of acquiring superior training in this highly demanded field"*

Understanding the different symptoms that a patient may have is of vital importance both to make a diagnostic suspicion of the disease and to know the patient's condition.

The diagnostic accuracy of hypermenorrhea or menorrhagia is important in gynecologic assessment. The difficulty of knowing an objective status of this symptomatology makes survey strategies and complementary tests necessary.

Therefore, this program goes in depth into the anamnesis and tests that any patient suffering from this symptom will need. In addition, the correct evaluation of urinary disorders and, above all, the importance of their coincidence with the menstrual cycle will be a fundamental objective of this course. It is even more important to know the symptoms of the gastrointestinal tract because of how frequent they are. Differential diagnoses of both urinary and gastrointestinal disorders will be discussed in depth. Therefore, raising what the symptoms are and how to act accordingly will help to improve the quality of life of the patients.

Finally, it has been more recently that chronic fatigue and migraine have been associated with endometriosis, this module will address why it affects and how to improve it.

This program, led by professionals with the highest level of excellence, brings together all the specialties involved in the clinical evaluation of the patient with endometriosis. A unique multidisciplinary training is provided in order to acquire the highest degree of specialization in the disease.

This Postgraduate Certificate is designed to help professionals to better treat their patients affected by endometriosis. Effective education and training in the mechanisms of Clinical Assessment of the Endometriosis Patient is provided through practical and theoretical teaching by senior faculty.

The **Postgraduate Certificate in Clinical Evaluation of the Patient With Endometriosis** contains the scientific most complete and up-to-date educational program on the market. The most important features of the program include:

- ♦ The development of case studies presented by experts in Endometriosis.
- ♦ The graphic, schematic, and eminently practical contents with which they are created provide scientific and practical information on the disciplines that are essential for professional practice.
- ♦ New developments in Endometriosis Techniques.
- ♦ Practical exercises where the self-assessment process can be carried out to improve learning.
- ♦ Special emphasis on innovative methodologies in Endometriosis techniques..
- ♦ Theoretical lessons, questions to the expert, debate forums on controversial topics, and individual reflection assignments.
- ♦ Content that is accessible from any fixed or portable device with an Internet connection.



*Expand your knowledge through this Postgraduate Certificate and specialize in Endometriosis to achieve excellence in this field"*

“

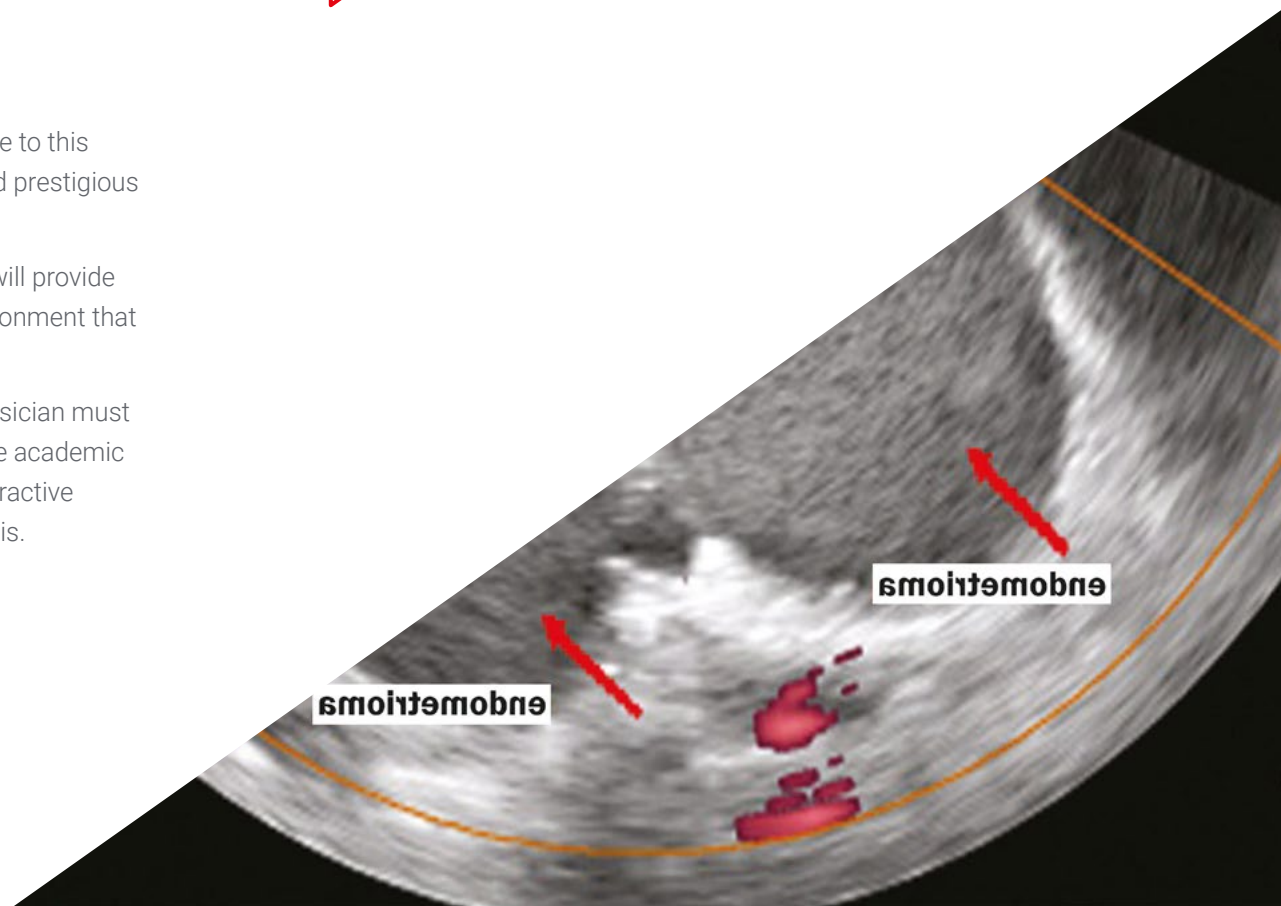
*A unique training that stands out for the quality of its contents and its excellent teaching staff, with which you will achieve professional success”*

*This Postgraduate Certificate 100% online course will allow you to combine your studies with your professional work while increasing your knowledge in this field.*

The teaching staff includes medical professionals who bring their experience to this training program, as well as renowned specialists from leading societies and prestigious universities.

The multimedia content, developed with the latest educational technology, will provide the professional with situated and contextual learning, i.e., a simulated environment that will provide immersive training programmed to train in real situations.

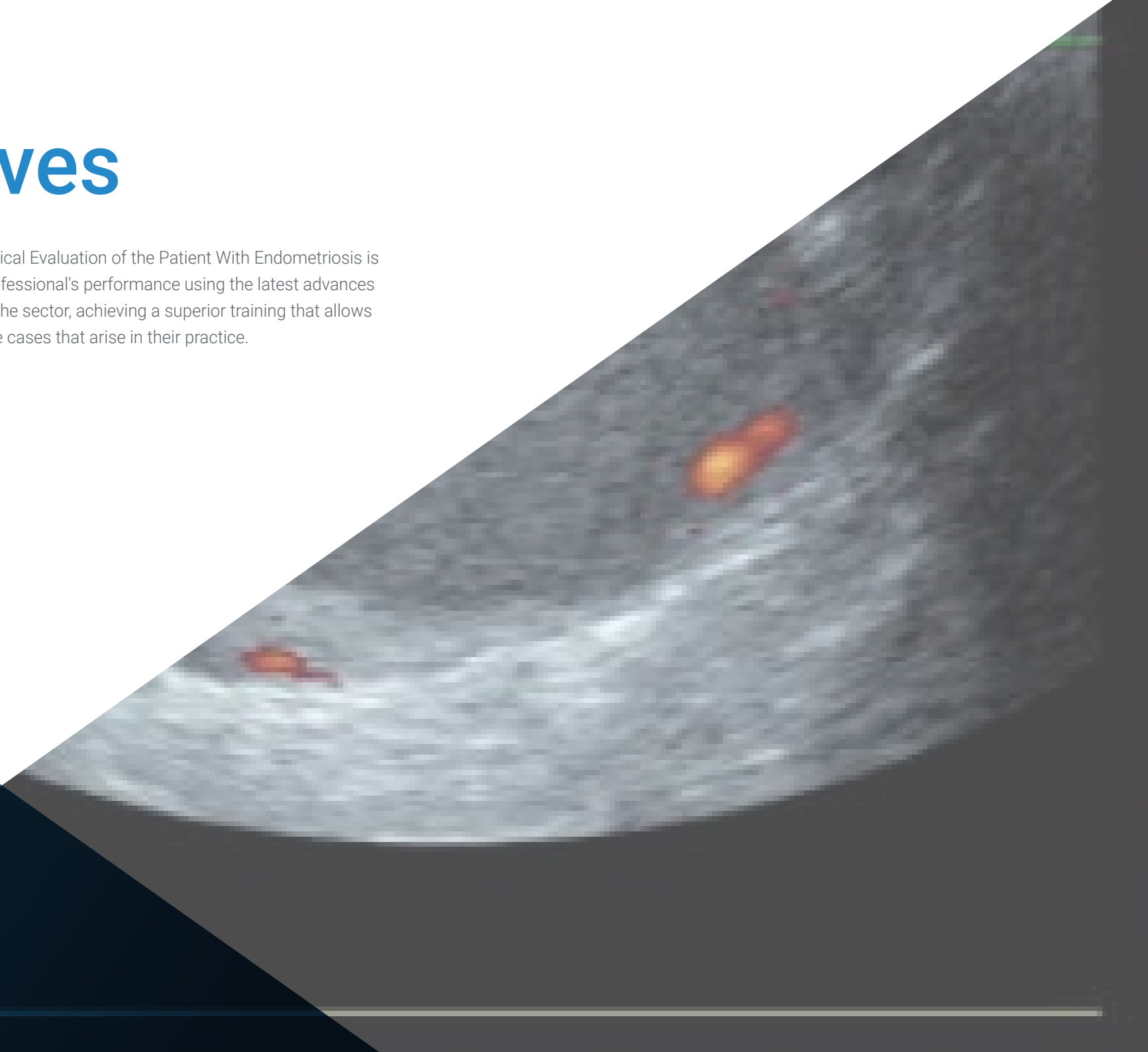
This program is designed around Problem Based Learning, whereby the physician must try to solve the different professional practice situations that arise during the academic year. For this purpose, the professional will be assisted by an innovative interactive video system created by renowned and experienced experts in Endometriosis.



02

# Objectives

The Postgraduate Certificate in Clinical Evaluation of the Patient With Endometriosis is oriented towards facilitating the professional's performance using the latest advances and most innovative treatments in the sector, achieving a superior training that allows them to act with total security in the cases that arise in their practice.





“

*At TECH, our objective is to offer you the most complete training in Endometriosis so that you reach a higher level of training which will propel you to elite professional level”*



## General Objectives

---

- ♦ Develop your educational and professional expertise in all the core areas of Endometriosis, giving you the appropriate knowledge, understanding and professional skills to improve the management of the patient with this chronic disease.
- ♦ Develop leadership skills in Endometriosis, so that you will be able to form a multidisciplinary team focused on this pathology.
- ♦ Acquire an understanding of the processes involved in the etiopathogenesis and pathophysiology of endometriosis, as well as their epidemiological aspects, which will provide adequate knowledge to provide a correct clinical history of the disease.
- ♦ Achieve sufficient skills to make a diagnostic approach to the patient through the clinical symptoms they present. Broaden knowledge about less frequent symptomatology.
- ♦ Explore in depth the different diagnostic approaches to Endometriosis from a critical perspective of routine clinical practice. Analyze combined diagnostic criteria.
- ♦ Gain knowledge of diagnostic techniques in research ranging from immunology to genetics and epigenetics. Develop competencies to know how to interpret results and in which situations to apply them.
- ♦ Achieve competent skills for the correct classification of Endometriosis. Know the types of Endometriosis and their severities according to different classifications.
- ♦ Develop the ability to have an integrative vision of adenomyosis. Ability to diagnose, follow up and treat patients affected by this disease. Know in depth the current fields of research.
- ♦ Gain an in-depth knowledge of Endometriosis from the treatment point of view. Deepen the knowledge of new medical therapies. Knowledge of new therapeutic lines of research.
- ♦ Acquire knowledge of the most appropriate surgical techniques depending on the patient's situation and the type of Endometriosis. Increase knowledge about complications and their treatment.
- ♦ Deepen knowledge about the medical and preventive aspects of the effects of Endometriosis from the field of reproductive medicine. Know the perspectives of embryology and the in vitro fertilization laboratory.
- ♦ Know in depth, the associations with different pathological situations. Expand knowledge of the management of Endometriosis associated with autoimmune diseases. Learn more about cancer risk and the different diagnostic and preventive approaches.



## Specific Objectives

---

- ◆ Deepen knowledge of the variability of symptomatology that occurs along with the disease Knowing the independence of this with the severity
- ◆ Exploring dysmenorrhea from a scientific point of view Know the surveys used Know the differential diagnosis with other diseases.
- ◆ Deepen in the Diagnosis of Hypermenorrhea Know the complementary tests used Know the differential diagnosis
- ◆ Evaluate chronic pelvic pain as a distinct entity, encompassing any pain that is independent of menstruation Deepen in the origins of pain and the tests to evaluate it.
- ◆ Acquire the skills to perform a scrupulous anamnesis of the urinary symptoms that may appear Knowing the differential diagnosis and which complementary tests are necessary
- ◆ Have a deep knowledge of the most frequent digestive tract symptomatology Deepen in the pathologies concomitant with endometriosis and to evaluate their diagnosis in an appropriate way.
- ◆ Evaluate symptoms coincident with menstruation and address possible extraperitoneal involvement of the disease Know the complementary tests and differential diagnosis.
- ◆ Deepen in the diagnosis of migraine associated with endometriosis Know the characteristics of migraine associated with endometriosis, as well as its prevalence
- ◆ Deepen the evaluation of fatigue as a symptom of endometriosis Know the impact that this symptom can have on the quality of life of patients and how to address it.
- ◆ Develop knowledge of psychological disorders affecting the disease..

03

# Course Management

The program includes in its teaching staff leading experts in Endometriosis, who bring to this training the experience from their work. Additionally, other recognized experts participate in its design and preparation, completing the program in an interdisciplinary manner.



A microscopic image of tissue, likely from the cervix, showing a dense population of cells with prominent nuclei and some elongated structures. The image is stained in shades of purple and pink. It is positioned in the top-left corner of the slide, partially overlapping a dark blue background.

“

*Leading experts in Gynecology and obstetrics  
have come together to share with you all their  
knowledge in this field"*

## Management



### Dr. Moliner Renau, Belén

- ◆ Director, Endometriosis Unit at Instituto Bernabeu
- ◆ Head of the Reproductive Medicine Ultrasound Department at Instituto Bernabeu.
- ◆ Coordinator of the "Image and Fertility" Working Group of the Spanish Fertility Society.
- ◆ Specialist in Obstetrics and Gynecology via MIR. Clinical University Hospital of Valencia
- ◆ Doctor in Medicine and "Cum Laude" Surgery. University of Valencia
- ◆ Master's Degree in Human Reproduction, Rey Juan Carlos University.
- ◆ Master's Degree in Research Methodology, Autonomous University of Barcelona.
- ◆ Advanced studies for the use of STATA in biomedical research. Autonomous University of Barcelona
- ◆ Expert in Medical Genetics. University of Valencia
- ◆ Master in autoimmune diseases
- ◆ University Certificate of Introduction to Regenerative Medicine: Biology and Applications of Human Stem Cells. University of Valencia

## Professors

### Dr. Herencia Rivero, Alicia

- ◆ Gynecologist specializing in Reproductive Medicine at Instituto Bernabeu in Madrid.

### Dr. Fuentes Rozalén, Ana

- ◆ Doctor specialized in Obstetrics and Gynecology. Master's Degree in Advanced Gynecological Endoscopic Surgery, University of Valencia in 2015. Gynecologist at Instituto Bernabeu.

### Dr. Gomis MD, Cristina

- ◆ Attending Physician, Gynecology and Obstetrics Service, Clinical Hospital of Valencia.

### Dr. De La Torre Pérez, Esperanza

- ◆ Specialist in Obstetrics and Gynecology. Instituto Bernabeu. Madrid

### Dr. Prieto Chaparro, Luis

- ◆ Urology Area Specialist, General University Hospital in Elche, Spain. Urologist, Bernabeu Institute of Alicante.

### Dr. Romera Agullo, Natalia

- ◆ General Health Psychologist, Instituto Bernabeu

### Dr. Albero Amoros, Sonia

- ◆ Gynecologist at Clínica Accuna in Alicante, Spain.



04

# Structure and Content

The structure of the contents has been designed by the best professionals in the field of endometriosis, with extensive experience and recognized prestige in the profession, backed by the volume of cases reviewed, studied and intervened in, and with ample command of new technologies applied to teaching.





“

*This Postgraduate Certificate contains the most complete and up-to-date scientific program on the market, which makes it your best study option"*

## Module 1. Clinical Evaluation of the Endometriosis Patient

- 1.1. Dysmenorrhea
- 1.2. Hypermenorrhea and Dysfunctional Uterine Hemorrhages
- 1.3. Chronic Pelvic Pain
- 1.4. Urinary Disorders
- 1.5. Gastrointestinal Disorders
- 1.6. Extraperitoneal Symptoms
- 1.7. Migraine
- 1.8. Fatigue
- 1.9. Psychological Disorders





“

*A unique, key, and decisive training experience to boost your professional development”*

05

# Methodology

This training program provides you with a different way of learning. Our methodology uses a cyclical learning approach: ***Re-learning***.

This teaching system is used in the most prestigious medical schools in the world, and major publications such as the ***New England Journal of Medicine*** have considered it to be one of the most effective.



“

*Discover Re-learning, a system that abandons conventional linear learning, to take you through cyclical teaching systems: a way of learning that has proven to be extremely effective, especially in subjects that require memorization"*

## At TECH we use the Case Method

In a given situation, what would you do? Throughout the program, you will be presented with multiple simulated clinical cases based on real patients, where you will have to investigate, establish hypotheses and, finally, resolve the situation. There is abundant scientific evidence on the effectiveness of the method. Specialists learn better, faster, and more sustainably over time.

*With TECH you can experience a way of learning that is shaking the foundations of traditional universities around the world.*



According to Dr. Gervas, the clinical case is the annotated presentation of a patient, or group of patients, which becomes a "case", an example or model that illustrates some peculiar clinical component, either because of its teaching potential or because of its uniqueness or rarity. It is essential that the case is based on current professional life, trying to recreate the real conditions in professional medical practice.

“

*Did you know that this method was developed in 1912 at Harvard for law students? The case method consisted of presenting students with real-life, complex situations for them to make decisions and justify their decisions on how to solve them. In 1924, Harvard adopted it as a standard teaching method”*

The effectiveness of the method is justified by four fundamental achievements:

1. Students who follow this method not only grasp concepts, but also develop their mental capacity by evaluating real situations and applying their knowledge.
2. The learning process has a clear focus on practical skills that allow the student to better integrate into the real world.
3. Ideas and concepts are understood more efficiently, given that the example situations are based on real-life.
4. Students like to feel that the effort they put into their studies is worthwhile. This then translates into a greater interest in learning and more time dedicated to working on the course.



## Re-Learning Methodology

At TECH we enhance the Harvard case method with the best 100% online teaching methodology available: Re-learning.

Our University is the first in the world to combine the study of clinical cases with a 100% online learning system based on repetition, combining a minimum of 8 different elements in each lesson, which represent a real revolution with respect to simply studying and analyzing cases.

*The physician will learn through real cases and by solving complex situations in simulated learning environments. These simulations are developed using state-of-the-art software to facilitate immersive learning.*





At the forefront of world teaching, the Re-learning method has managed to improve the overall satisfaction levels of professionals who complete their studies, with respect to the quality indicators of the best Spanish-speaking online university (Columbia University).

With this methodology we have trained more than 250,000 physicians with unprecedented success, in all clinical specialties regardless of the surgical load. All this in a highly demanding environment, where the students have a strong socio-economic profile and an average age of 43.5 years.

*Re-learning will allow you to learn with less effort and better performance, involving you more in your specialization, developing a critical mindset, defending arguments, and contrasting opinions: a direct equation to success.*

In our program, learning is not a linear process, but rather a spiral (we learn, unlearn, forget, and re-learn). Therefore, we combine each of these elements concentrically.

The overall score obtained by our learning system is 8.01, according to the highest international standards.



In this program you will have access to the best educational material, prepared with you in mind:



#### Study Material

All teaching material is produced by the specialists who teach the course, specifically for the course, so that the teaching content is highly specific and precise.

This content is then adapted in an audiovisual format that will create our way of working online, with the latest techniques that allow us to offer you high quality in all of the material that we provide you with.



#### Latest Techniques and Procedures on Video

We introduce you to the latest techniques, to the latest educational advances, to the forefront of current medical techniques. All this, in first person, with the maximum rigor, explained and detailed for your assimilation and understanding. And best of all, you can watch them as many times as you want.



#### Interactive Summaries

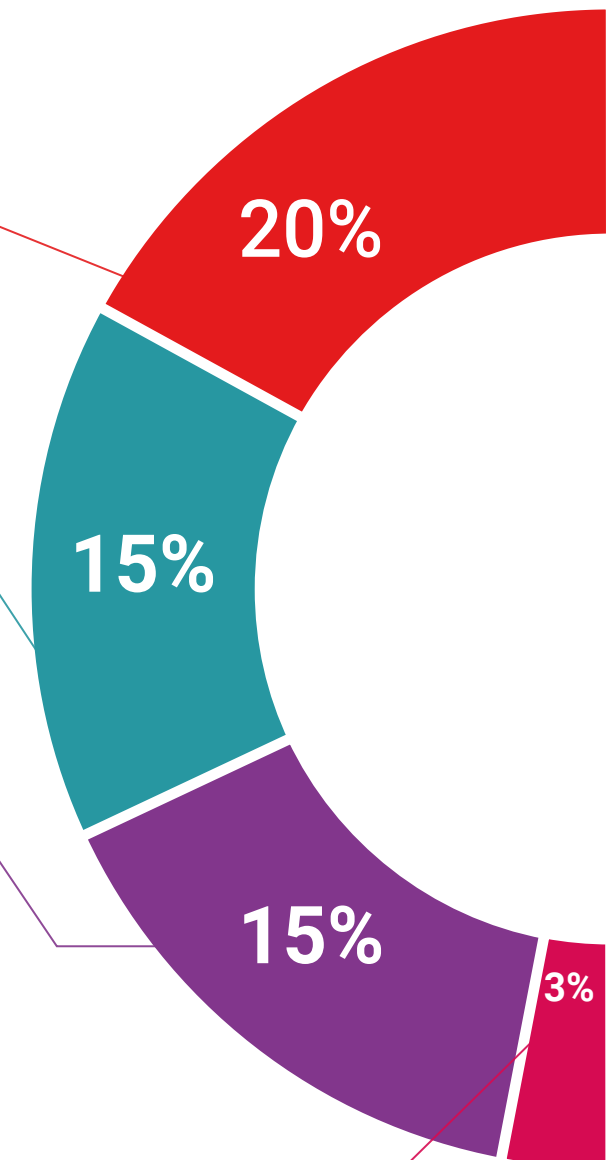
We present the contents attractively and dynamically in multimedia lessons that include audio, videos, images, diagrams, and concept maps in order to reinforce knowledge.

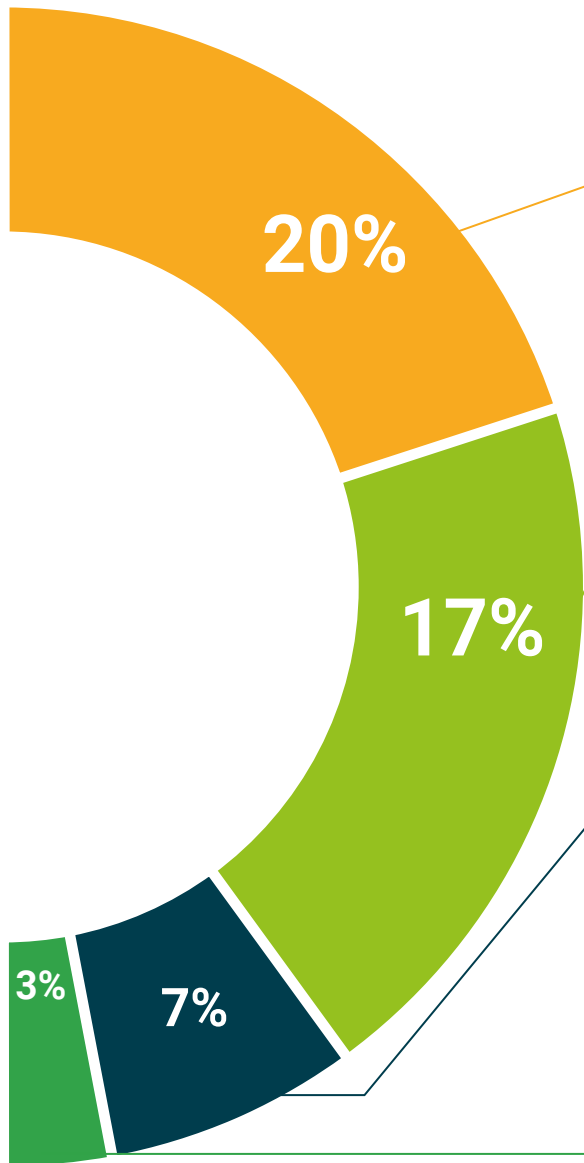
This unique multimedia content presentation training system was awarded by Microsoft as a "European Success Story".



#### Additional Reading

Recent articles, consensus documents, international guides. in our virtual library you will have access to everything you need to complete your training.





**Expert-Led Case Studies and Case Analysis**

Effective learning ought to be contextual. Therefore, we will present you with real case developments in which the expert will guide you through focusing on and solving the different situations: a clear and direct way to achieve the highest degree of understanding.



**Testing & Re-testing**

We periodically evaluate and re-evaluate your knowledge throughout the program, through assessment and self-assessment activities and exercises: so that you can see how you are achieving your goals.



**Classes**

There is scientific evidence suggesting that observing third-party experts can be useful.

Learning from an expert strengthens knowledge and memory, and generates confidence in our future difficult decisions.



**Quick Action Guides**

We offer you the most relevant contents of the course in the form of worksheets or quick action guides. A synthetic, practical, and effective way to help you progress in your learning.



06

# Certificate

The **Postgraduate Certificate in Clinical Evaluation of the Patient With Endometriosis** guarantees access to a Postgraduate Certificate certificate issued by **TECH Technological University**.



“

*Successfully complete this training and receive your university degree without travel or laborious paperwork"*

The **Postgraduate Certificate in Clinical Evaluation of the Patient With Endometriosis** contains the scientific most complete and up-to-date scientific program on the market.

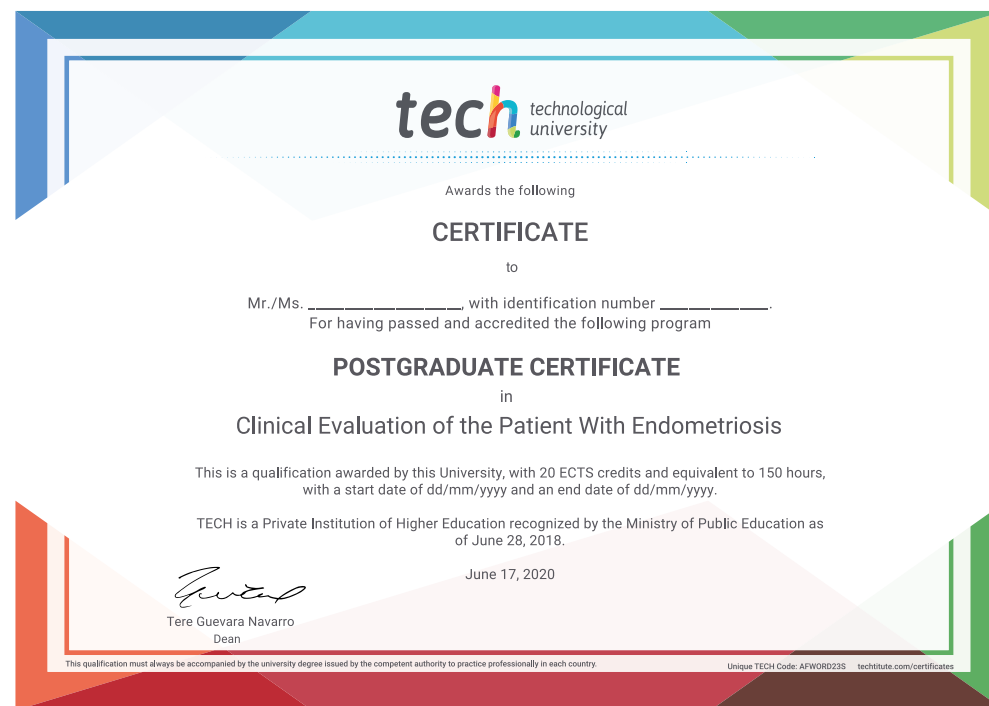
After students have passed the assessments, they will receive by certified mail their **Postgraduate Certificate** issued by **TECH Technological University**.

The certificate issued by **TECH Technological University** will specify the qualification obtained through the Postgraduate Certificate, and meets the requirements commonly demanded by labor exchanges, competitive examinations, and professional career evaluation committees.

Title: **Postgraduate Certificate in Clinical Evaluation of the Patient With Endometriosis**

ECTS: **6**

Official Number of Hours: **150**.



future  
health confidence people  
education information tutors  
guarantee accreditation teaching  
institutions technology learning  
community commitment  
personalized service innovation  
knowledge present quality  
development languages  
virtual classroom



**Postgraduate Certificate**  
Clinical Evaluation of the  
Patient With Endometriosis

Course Modality: Online

Duration: 6 weeks

Certificate: TECH Technological University

6 ECTS Credits

Teaching Hours: 150 hours.

# Postgraduate Certificate

## Clinical Evaluation of the Patient With Endometriosis