

Internship Program Psycho-Oncology



tech



tech

Internship Program
Psycho-Oncology

Index

01

Introduction

p. 4

02

Why Study an Internship Program?

p. 6

03

Objectives

p. 8

04

Educational Plan

p. 10

05

Where Can I Do the Internship Program?

p. 12

06

General Conditions

p. 14

07

Certificate

p. 16

01 Introduction

For several years, Psycho-oncology has tirelessly sought new care protocols to support patients, family members and doctors who must face cancer. Since the development of science and technology, these innovations have occurred constantly, demanding greater involvement and updating of these aspects from doctors. For this reason, TECH has designed this program, 100% practical and in-person. Through it, the specialist will be able to access a renowned hospital center and participate, for 3 weeks, in different clinical and psychological interventions for patients recovering from tumors. Upon completing this intensive stay, the graduate will add the most modern protocols adjusted to current scientific and technological developments to their daily practice.



Sign up for this intensive and immersive Internship Program that will provide you with the most up-to-date techniques in the psychological management of patients with oncological pathologies”





Psychological support for patients, family members and professionals involved in cancer treatment is currently a demand in this health discipline. This is because, in recent years, the specialty has implemented much more updated and sectorized protocols. In this way, the latest scientific evidence demonstrates the need to apply specific procedures to patients according to the types of tumors and their specific locations. Likewise, strategies for managing grief have evolved, among other trends.

However, it is not easy for doctors to keep up to date on all these criteria and it is extremely difficult for them to implement them in their daily practice because the pedagogical programs have a high theoretical load. To solve this problem, TECH has designed this highly up-to-date and rigorous Practical Training in Psycho-Oncology. The program is made up of a 3-week in-person stay where the health care professional will begin working in a renowned hospital center. From that entity, it will offer specialized care to real patients, always accompanied by experts of distinguished prestige.

This academic modality will also facilitate doctors' access to centers located in different latitudes. In this way, the professional will be trained according to international perspectives. Likewise, at all times, they will be accompanied by an assistant tutor who will guide their progress in a personalized way. Upon completing the 120 hours of study integrated into this program, the graduate will be ready to implement the most innovative health care strategies in their daily practice and offer it to patients with various complications in their consultations and units of work.

02

Why Study an Internship Program?

This academic update allows the doctors to their skills in Psycho-Oncology towards excellence. The program, composed of a practical, in-person and intensive stay, will provide the specialist with a holistic mastery of the most recent care protocols, based on the latest scientific evidence. In addition, this Internship Program will take place in specialized cancer centers that have an excellent team of experts. At the same time, an adjunct tutor will involve you in the dynamics of the clinical environment and help you get the most out of this immersive and comprehensive preparation.



TECH offers you the possibility of taking a 100% practical and specialized program in Psycho-Oncology in real and highly demanding clinical scenarios"

1. Updating from the latest technology available

Science and technology go hand in hand in the search for palliative treatments and more effective strategies in the treatment of cancer. At the same time, the implementation of the most modern work procedures and resources requires professionals properly trained to handle them. Therefore, this Internship Program offers the doctor the opportunity to expand their knowledge directly and in person, based on the direct psychological care of patients with different tumor pathologies.

2. Gaining In-Depth Knowledge from the Experience of Top Specialists

Through this study program, TECH wants to ensure that specialists have top-level practical skills in the psycho-oncological intervention of patients with different cancer diseases. For this reason, it has created the figure of the deputy tutor, who will be responsible for coordinating everyone's learning and the link between specialists and the most complex care dynamics.

3. Entering First-Class Clinical Environments

TECH maintains a close relationship with cutting-edge hospital centers from all over the world. In particular, it has coordinated this Internship Program with several prestigious institutions dedicated to the treatment of patients with oncological pathologies. These facilities, in addition to having the best specialists in the sector, have updated technologies that the doctor can manage from the first moment of the educational stay.



4. Putting the acquired knowledge into daily practice from the very first moment

The academic market does not offer enough pedagogical solutions for those specialists who wish to update their knowledge about Psycho-Oncology in a practical way. This 3-week in-person stay breaks with that scheme and, at the same time, allows the doctor to make the study compatible with other responsibilities or interests.

5. Expanding the Boundaries of Knowledge

This is possible thanks to TECH, the largest online educational institution in the world, which has a network of agreements and collaborators that will shorten the geographical latitudes for learning.

“

*You will have full practical immersion
at the center of your choice”*

03 Objectives

This Internship Program in Psycho-Oncology provides a first-level update on the most innovative procedures of that medical discipline, in an exclusively practical way. Achieve this goal, TECH has designed an in-person hospital stay, with the maximum clinical and academic rigor, led by renowned professionals.



General Objectives

- Manage the application of psychology to the care of cancer patients and deepen the knowledge of the area of study and the development of the profession
- Define the functions of a psycho-oncology unit and the role of the psycho-oncologist in the health care setting
- Gain in-depth knowledge of the different therapeutic options in the psychological treatment of cancer



Make the most of this opportunity to surround yourself with expert professionals and learn from their work methodology”





Specific Objectives

- ♦ Contribute to the control of mood alterations through appropriate psychological strategies
 - ♦ Assess and intervene in adaptive and maladaptive emotions and behaviors
 - ♦ Understand the influence of the psychological aspects of each type of tumor and to contribute to their control by means of psychological strategies
 - ♦ intervene in adaptive and maladaptive emotions and behaviors of the different Oncologic processes
 - ♦ Differentiate between adaptive and maladaptive emotions and behaviors at the end of life
 - ♦ Explore and apply strategies for emotional self-regulation
 - ♦ Evaluate, diagnose and intervene in the most prevalent psychological problems in palliative care
 - ♦ Explore personal, social and cultural beliefs and values of the family in relation to illness and death
 - ♦ Prepare for the loss, identifying the psychological reactions in the different phases of grief
 - ♦ Provide appropriate individual and family bereavement support, the pathological
 - ♦ Delve into the basics and acquire basic communication skills and the theoretical bases of the professional patient relationship
 - ♦ Be able to deliver bad news and answer difficult questions
 - ♦ Elaborate an initial assessment (detailed clinical history) and analysis of the social and spiritual emotional impact on the patient and their family
 - ♦ Know how to apply the instruments for the assessment of the patient and the family, useful and appropriate for each symptom and stage of the disease
- ♦ Comprehension the conceptual bases, the methodology, the systematics and the procedures related to research in psycho-oncology
 - ♦ Apply bioethical principles to daily clinical practice with special emphasis on the most complex and specific situations
 - ♦ Become proficient the conceptual and practical bases of ethics applied to the oncologic process
 - ♦ Analyze in a scientific, rigorous and systematic way, ethical problems from an interdisciplinary perspective
 - ♦ Handle the methodology of bioethics, rational and interdisciplinary, and know how to apply it to specific or general situations



This practical stay, with a duration of 120 hours, is ideal for you to expand your daily professional practice and acquire greater mastery of the most recent work protocols"

04

Educational Plan

The Internship Program consists of a practical stay in a prestigious center, a 3-week period, from Monday to Friday with 8 consecutive hours of work. During that period of time, the doctor will have the personalized guidance of an adjunct tutor. Moreover, the health care professional will have the best experts in the sector on their side and will acquire dynamic knowledge of the most recent skills in that medical discipline.

In this completely practical Internship Program, the activities are aimed at developing and perfecting the skills necessary to provide healthcare care in areas and conditions that require highly qualified professionals, and are oriented towards specific expertise for practicing the activity, in a safe environment for the patient and with highly professional performance.

Practical teaching will be carried out with the active participation of the student, carrying out the activities and procedures of each area of competence (learning to learn and learning to do), with the accompaniment and guidance of teachers and other training partners that facilitate teamwork. and multidisciplinary integration as transversal competencies for the praxis of medicine (learning to be and learning to relate).

The procedures described below will form the basis of the practical part of the training, and their implementation is subject to both the suitability of the patients and the availability of the center and its workload, with the proposed activities being as follows:





Module	Practical Activity
Methods evaluation in Psycho-Oncology	Personalize psychological interventions to adapt them to the individual needs of each patient
	Apply the Patient Needs Assessment Instrument to evaluate individualized patient requirements
	Implement Questionnaires to evaluate pain, fatigue and sleep quality in the patient under palliative care for aggressive tumors
	Assess the emotional state of the patient after receiving the cancer diagnosis through the Emotional Discomfort Detection Questionnaire
	Evaluate the coexistence and state of the family unit using specific sociological and psychological instruments such as the Family Relations Index
	Record the patient's response to their therapeutic intervention using the GES needs assessment and spiritual well-being scale and the Test Purpose in Life
Strategies intervention in Psycho-oncology	Identify and change negative thought and behavior patterns that can contribute to anxiety, depression and stress in people with cancer through Cognitive-Behavioral Therapy
	Provide a safe and confidential space for people with cancer to talk about their concerns, fears and doubts related to the disease through Supportive Therapy
	Teach people with cancer Mindfulness and Meditation techniques to be present and aware of their thoughts, emotions and sensations
	Indicate meaningful and rewarding activities through occupational therapy and Recreational therapy that help patients maintain their quality of life during and after treatment
	Implement psychological care through the internet, which can be useful for people with cancer who live in remote areas
Mechanisms for grief management in family of patients with cancer	Help family members process their emotions, adapt to change and learn strategies to manage grief through individual psychological care
	Implement Support Groups where family members can benefit from connecting with others who are going through similar situations
	Involve the patient's family members with alternative grief therapies such as F as Meditation, yoga and art therapy can help reduce stress and improve emotional well-being
	Improve the emotional well-being of children and adolescents who suffer from cancer, since these have specific needs
	Cope with the emotional and practical demands of cancer through sessions Family or couples therapy

05 Where Can I Do the Internship Program?

TECH works tirelessly to expand the academic horizons of specialists. For this reason, this Internship Program is taught in hospital centers located in different geographical latitudes. Also, these entities will have the best technology and a team of highly prestigious experts within their staff. In short, this is a unique opportunity that allows health care professionals to develop the best skills and bring them to their daily medical practice after just 3 weeks.



Apply in your daily practice the most important advances in Psycho-oncology, based on the latest scientific evidence, and that TECH will be in your hand from the best hospital centers"





The student will be able to do this program at the following centers:



Medicine

Hospital HM Torrelodones

Country City
Spain Madrid

Address: Av. Castillo Olivares, s/n, 28250 Torrelodones, Madrid

Network of private clinics, hospitals and specialized centers distributed throughout Spain.

Related internship programs:

- Anaesthesiology and Resuscitation
- Palliative Care



Medicine

HM CIOCC - Centro Integral Oncológico Clara Campal

Country City
Spain Madrid

Address: Calle de Oña, 10, 28050, Madrid

Network of private clinics, hospitals and specialized centers distributed throughout Spain.

Related internship programs:

- Gynecologic Oncology
- Clinical Ophthalmology



Medicine

HM CIOCC Barcelona

Country City
Spain Barcelona

Address: Avenida de Vallcarca, 151, 08023, Barcelona

Network of private clinics, hospitals and specialized centers distributed.

The Spanish Geography

Related internship programs:

- Advances in Hematology and Hemotherapy Oncology Nursing



Medicine

HM CIOCC Galicia

Country City
Spain La Coruña

Address: Avenida das Burgas, 2, 15705, Santiago de Compostela

Network of private clinics, hospitals and specialized centers distributed throughout Spain.

Related internship programs:

- Gynecologic Oncology
- Clinical Ophthalmology

06

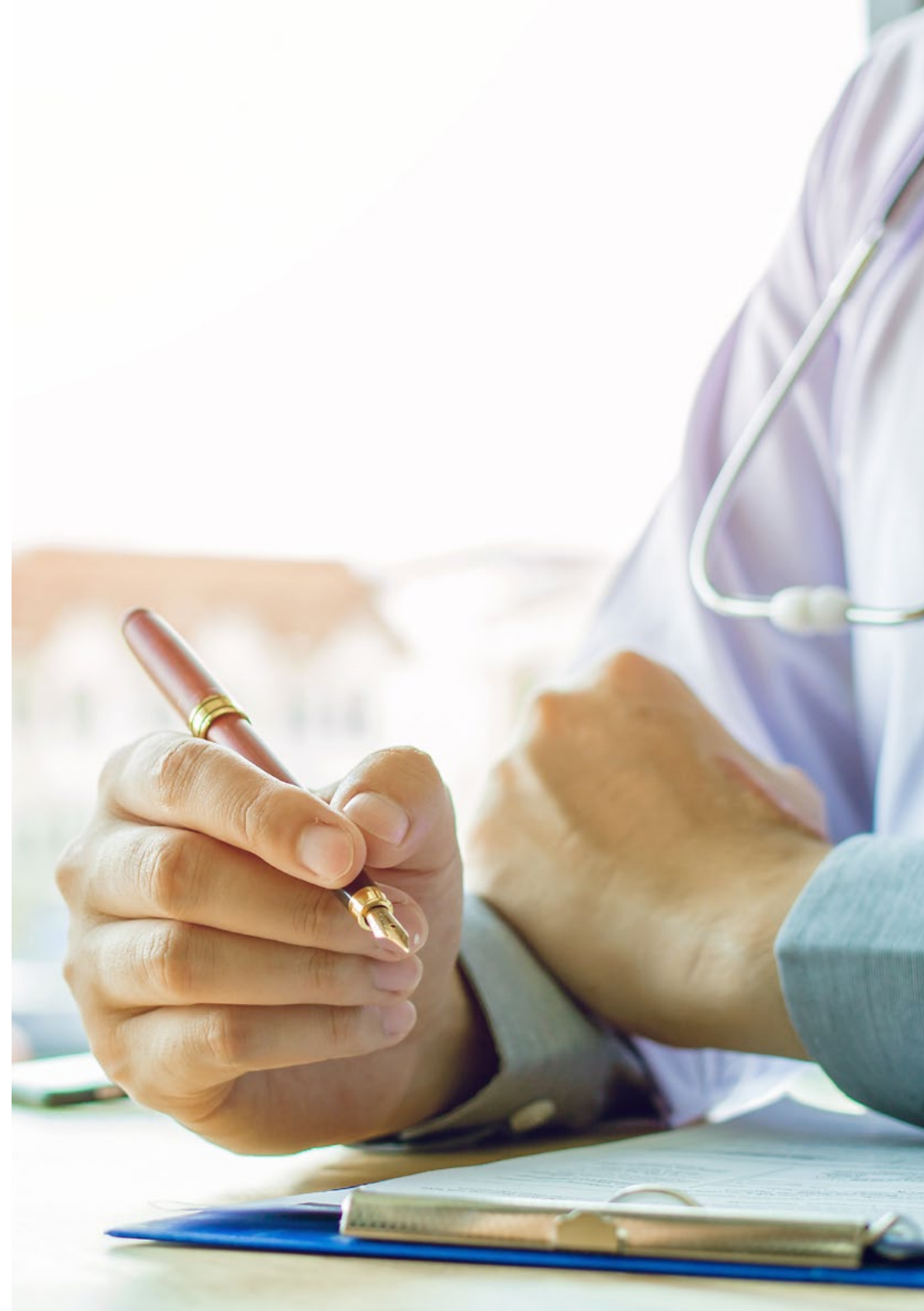
General Conditions

Civil Liability Insurance

This institution's main concern is to guarantee the safety of the trainees and other collaborating agents involved in the internship process at the company. Among the measures dedicated to achieve this is the response to any incident that may occur during the entire teaching-learning process.

To this end, this entity commits to purchasing a civil liability insurance policy to cover any eventuality that may arise during the course of the internship at the center.

This liability policy for interns will have broad coverage and will be taken out prior to the start of the practical training period. That way professionals will not have to worry in case of having to face an unexpected situation and will be covered until the end of the internship program at the center.



General Conditions of the Internship Program

The general terms and conditions of the internship program agreement shall be as follows:

1. TUTOR: During the Internship Program, students will be assigned with two tutors who will accompany them throughout the process, answering any doubts and questions that may arise. On the one hand, there will be a professional tutor belonging to the internship center who will have the purpose of guiding and supporting the student at all times. On the other hand, they will also be assigned with an academic tutor, whose mission will be to coordinate and help the students during the whole process, solving doubts and facilitating everything they may need. In this way, the student will be accompanied and will be able to discuss any doubts that may arise, both clinical and academic.

2. DURATION: The internship program will have a duration of three continuous weeks, in 8-hour days, 5 days a week. The days of attendance and the schedule will be the responsibility of the center and the professional will be informed well in advance so that they can make the appropriate arrangements.

3. ABSENCE: If the students does not show up on the start date of the Internship Program, they will lose the right to it, without the possibility of reimbursement or change of dates. Absence for more than two days from the internship, without justification or a medical reason, will result in the professional's withdrawal from the internship, therefore, automatic termination of the internship. Any problems that may arise during the course of the internship must be urgently reported to the academic tutor.

4. CERTIFICATION: Professionals who pass the Internship Program will receive a certificate accrediting their stay at the center.

5. EMPLOYMENT RELATIONSHIP: The Internship Program shall not constitute an employment relationship of any kind.

6. PRIOR EDUCATION: Some centers may require a certificate of prior education for the Internship Program. In these cases, it will be necessary to submit it to the TECH internship department so that the assignment of the chosen center can be confirmed.

7. DOES NOT INCLUDE: The Internship Program will not include any element not described in the present conditions. Therefore, it does not include accommodation, transportation to the city where the internship takes place, visas or any other items not listed.

However, students may consult with their academic tutor for any questions or recommendations in this regard. The academic tutor will provide the student with all the necessary information to facilitate the procedures in any case.

07 Certificate

This **Internship Program in Psycho-Oncology** contains the most complete and updated program on the professional and academic scene.

After the student has passed the evaluations, they will receive their corresponding TECH Internship Program issued by TECH Technological University via tracked delivery.

The certificate issued by TECH will reflect the grade obtained in the test.

Program: **Internship Program in Psycho-Oncology**

Duration: **3 weeks**

Attendance: **Monday to Friday, 8-hour consecutive shifts**

Total Hours: **120 h. of professional practice**



tech

Internship Program
Psycho-Oncology

Internship Program Psycho-Oncology



tech