

Internship Program

Medical Approach in Speech, Language, and Communication Disorders





tech global
university

Internship Program
Medical Approach in
Speech, Language, and
Communication Disorders

Index

01

Introduction

p. 4

02

Why Study an
Internship Program?

p. 6

03

Objectives

p. 8

04

Educational Plan

p. 10

05

Where Can I Do the
Internship Program?

p. 12

06

General Conditions

p. 14

07

Certificate

p. 16

01 Introduction

In terms of language development as a skill, each individual has a different rate of evolution. The average age for detecting signs of communication disorders is estimated to be 6 years old. Therefore, the importance of early detection, as well as the application of therapeutic methods in speech and communication disorders, will improve the symptoms of the affected person. Therefore, the specialist must be up to date with the most effective and updated methods that allow the patient to improve their quality of life. To this end, TECH has developed this 100% Internship Program that offers the professional an intensive 3-week stay in a prestigious specialized center, where he will develop all his knowledge in a setting equipped to care for patients with Speech, Language and Communication Disorders.



Get up to date with the advances in the Approach to Speech, Language and Communication Disorders with TECH's Internship Program"





Early interventions usually offer the most effective help in speech, language and communication disorders, even in cases of adults who have suffered stroke or other types of conditions that prevent fluency in their expression. The constant advances in science and the use of the resources that technology offers, allow the specialist to address more accurately this type of alteration. Speech and Language Disorders directly influence the patient's quality of life. It is estimated that 7% of the child population suffers from some type of alteration of this type, be it speech, language or voice disorders, linguistic alterations derived from a disability, among others, and various therapies have emerged to address them more effectively.

This Internship Program will allow the professional to improve his daily praxis through practice, incorporating new techniques and resources that will acquire over 120 hours of an intensive stay from Monday to Friday for 8 hours a day, in one of the most prestigious centers in the field. TECH has made a meticulous selection of highly prestigious scenarios with advanced, multidisciplinary and modern human and technical equipment that will provide the greatest innovation to the professionals who take this program.

During the stay you will have the support of an assistant tutor, who will set the guidelines to follow according to the objective of this program and ensure that all requirements are met to integrate in the professional the most innovative interventions to promote the cognitive, behavioral and physical abilities of the patient.

02

Why Study an Internship Program?

Physicians must be in constant training because science is one of the areas that is constantly evolving. Every day new discoveries emerge that provide great solutions to improve people's health and make society more prosperous. The best way to acquire them is by updating knowledge. That is why TECH, in its eagerness to offer dynamic and advanced academic alternatives to today's professionals, has created this new 100% practical teaching model. Therefore, the specialist will be able to see firsthand, and in a completely real working environment, the latest scientific findings and most effective methods to address the most recurrent cases and diverse casuistry in Speech, Language and Communication Disorders.



You will learn about new advances and therapies to address the various syndromes and types of language disorders in an avant-garde setting and with real cases"

1. Updating from the latest technology available

Thanks to the continuous advances in science and technology to address the most recurrent health conditions in the population, the physician has advanced alternatives to care for their patients. In the case of therapies and approaches to Speech, Language and Communication Disorders, there are many clinical advances that the professional will acquire with this Internship Program, since he will enter an avant-garde professional environment with state-of-the-art technology.

2. Gaining In-Depth Knowledge from the Experience of Top Specialists

The specialist will be accompanied by a multidisciplinary team of experts in medical approaches to Speech, Language and Communication Disorders who will provide their vision and perspective on the various therapies and interventions in real patients. Therefore, they will share an innovative space, equipped with the most advanced resources that will allow them to incorporate the most effective procedures and approaches in their daily practice.

3. Entering First-Class Clinical Environments

To implement this type of program, TECH has conducted a thorough study of the conditions and characteristics of each clinical center, to verify that it meets the requirements of the program and the needs of the student. Therefore, the doctor in this case will find an interdisciplinary team that will accompany him and nurture the academic experience 100% practical and with the use of the most modern resources.



4. Putting the acquired knowledge into daily practice from the very first moment

TECH offers a new learning model, 100% practical, that allows you to get in front of state-of-the-art procedures in the field of Medical Approaches to Speech, Language and Communication Disorders with real cases together with a team of specialists over 3 weeks, which will allow you to incorporate new techniques to your daily practice immediately.

5. Expanding the Boundaries of Knowledge

The specialist will be able to expand his frontiers and get up to date with the best professionals who practice in first class specialized health centers, and not only in the national territory but also internationally. An innovative and exclusive opportunity that only TECH could offer.



*You will have full practical immersion
at the center of your choice"*

03

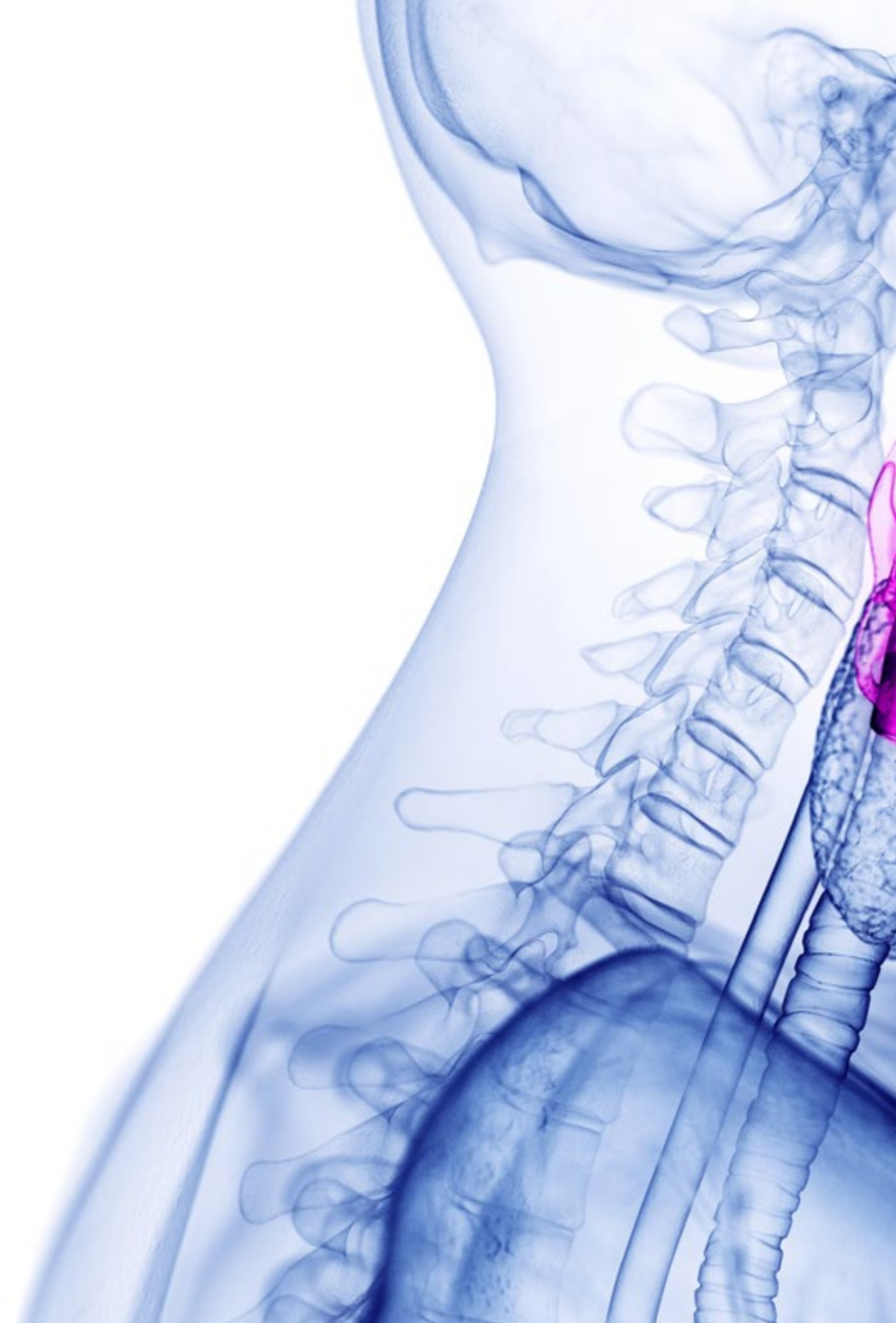
Objectives

During this Internship Program the professional will be able to update in the latest diagnostic and therapeutic procedures in an exclusively practical way, through an intensive stay of 120 hours, with a team of experts under a clinical and academic protocol, which will allow him to bring to his practice new methods that will broaden his perspective in terms of approaches to Speech, Language and Communication Disorders.



General Objectives

- Master the latest techniques, modern scientific postulates and the application of cutting-edge technologies in Speech, Language and Communication Therapies
- Incorporate into daily work the most effective methods, approaches and clinical analysis, endorsed by a team of prestigious experts in the area of Speech, Language and Communication Therapies
- Know the specific approach and common cases that occur in the current clinical environment regarding genetic syndromes and specific disorders that affect the correct expression of the individual





Specific Objectives

- ◆ Delve into the typical development of language, knowing its stages, as well as being able to identify the warning signs of language development
- ◆ Classify the different language pathologies, from the different approaches that exist currently
- ◆ Know the different tests available to be able to carry out a correct evaluation of the different areas of language
- ◆ Understand the importance and effectiveness of working with an interdisciplinary team, whenever necessary and favorable for the Patients's rehabilitation
- ◆ Delve into the knowledge of dyslalia and the different types of classifications and subtypes that exist
- ◆ Analyze and develop techniques for a correct reading process in the patient
- ◆ Identify the main language disorders and their therapeutic treatment
- ◆ Know the need for an intervention supported and endorsed by both the family and the child's school teaching team
- ◆ Know the different areas affected, as well as the first indicators within the therapeutic process
- ◆ Deepen in different intervention tools, including material and resources, both manual and computer devices, as well as the possible adaptations to be made
- ◆ Differentiate the symptomatology and characteristics of verbal apraxia and dysarthria, being able to identify both pathologies by carrying out an adequate assessment process
- ◆ Know the assessment and diagnostic tools to assess hearing loss and the importance of a multidisciplinary team to carry it out
- ◆ Study in depth the subject of executive functions and learn about their implications in the area of language

04

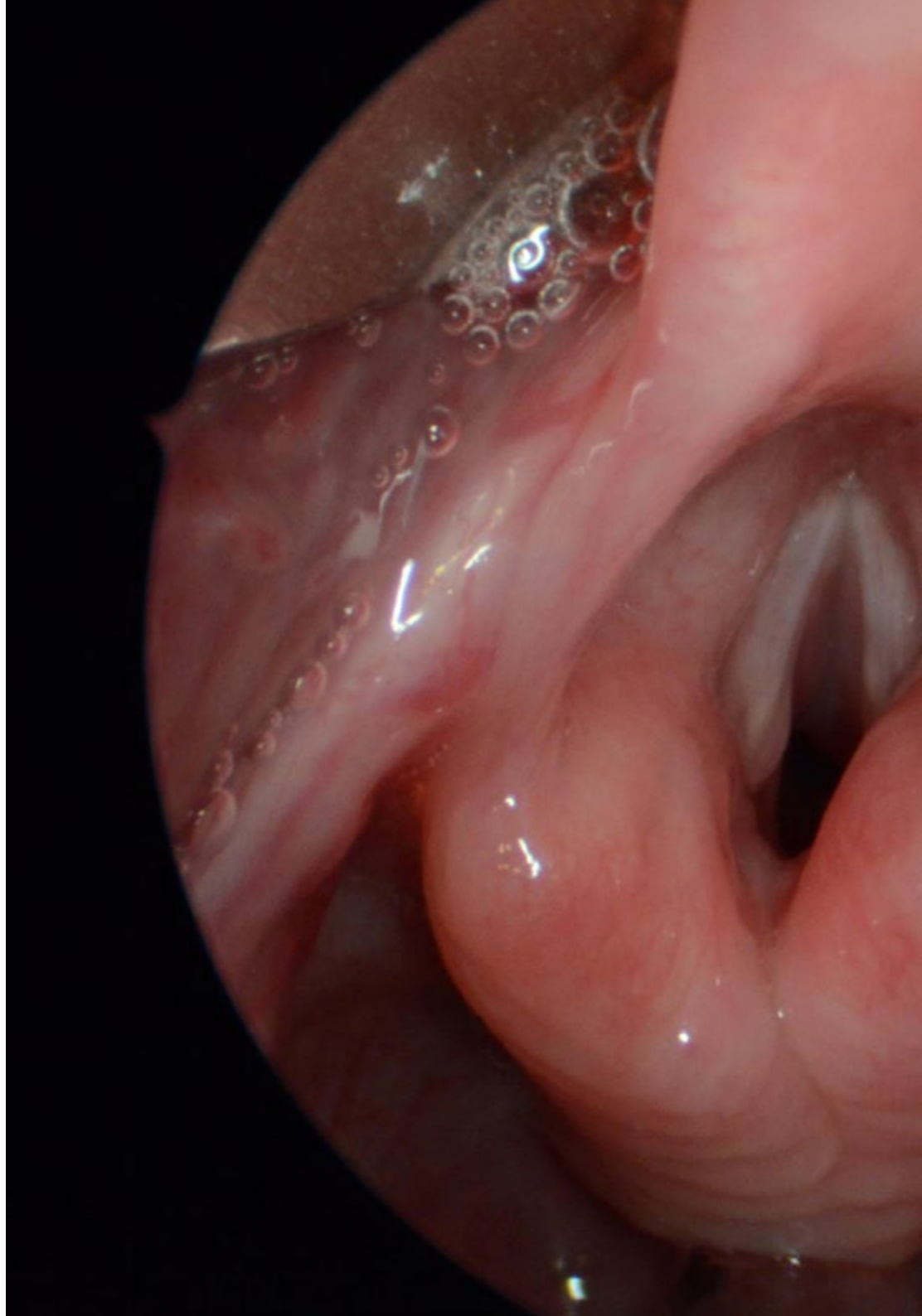
Educational Plan

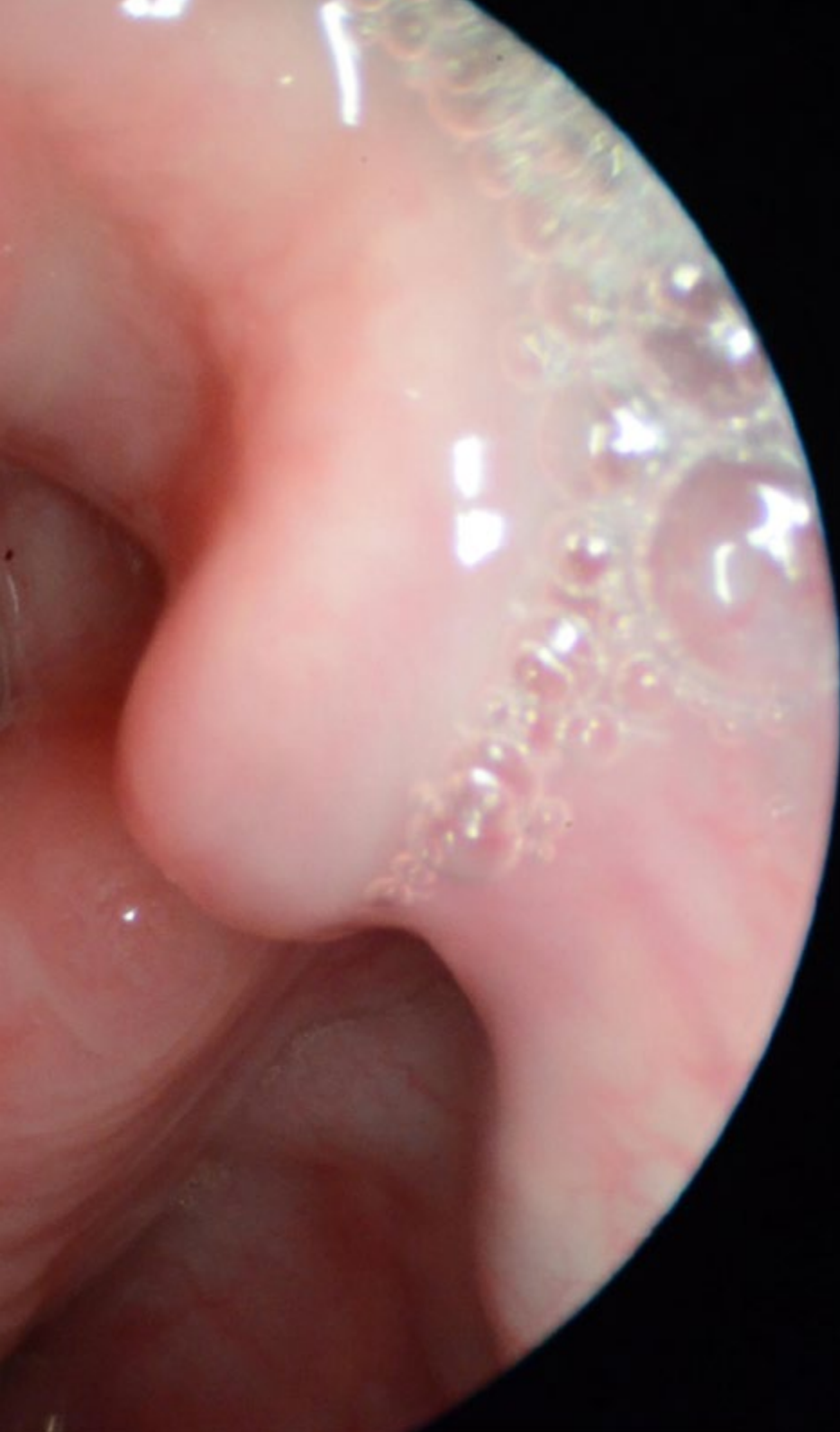
The Internship Program of this program in Medical Approach to Speech, Language and Communication Disorders consists of an intensive and 100% dynamic stay in a prestigious health center, where the professional will share a room with highly competent health professionals. For 8 hours a day, from Monday to Friday for a total of 120 hours of occupation, you will be with an assigned tutor who will provide you with all the guidance and support you need. Therefore, you will apply the most innovative therapies and interventions on real patients.

In this training proposal, of a completely practical nature, the activities are aimed at developing and perfecting the skills necessary for the provision of care in speech, language and communication disorders, in patients who require personalized attention, and are oriented to the specific training for the exercise of the activity, in an environment of safety for the patient and high professional performance.

A unique opportunity for the professional who wishes to renew his daily practice, in a different scenario with advanced resources, specialized medical staff and with the ability to offer the most effective approaches to patients who come to his office.

The practical teaching will be carried out with the active participation of the student performing the activities and procedures of each area of skill (learning to learn and learning to do), with the accompaniment and guidance of teachers and other fellow trainees that facilitate teamwork and multidisciplinary integration as transversal skills for medical practice (learning to be and learning to relate).





The procedures described below will be the basis of the practical part of the training, and their implementation is subject to both the suitability of the patients and the availability of the center and its volume of work, the proposed activities being the following:

Module	Practical Activity
Diagnostic methods in the detection of Speech, Language and Communication Disorders	Perform the PROLEC-R, PROLEC-SE, PROESC and TALE tests for the assessment of the patient's reading and writing skills
	Apply the Leter-3 international manipulative scale and the Arizona Articulation and Phonology Scale, 4th revision (Arizona 4)
	Perform Goldman-Fristoe Articulation Test 3 (GFTA-3) and screening test through prosodic speech profile
	Perform BLOC, ITPA, PLON-R, RFI, EDAF, ELA-R and Monfort Induced Phonological Record tests to assess the patient's oral language
	Perform audiometry and analyze audiograms
	Apply the Brunet-Lézine scale, the Haizea-Llevant scale, the Bayley Scale and the Battelle Developmental Inventory to assess the patient's development
	Perform orofacial motor assessment, verifying the state of the stomatognathic system
Diagnostic methods in the detection of Speech, Language and Communication Disorders	Use SAAC technological resources such as AraBoard Constructor, Talk Up, SPQR, DictaPicto, AraWord and Picto Selector as alternative communication proposals for patients with communication disorders
	Design activities for rehabilitation in Dyslalia, Dyslexia, Aphasia and other disorders,
	Use the game as a therapeutic method in the pediatric office
	Indicate facial, mouth and tongue exercises to manage conditions and syndromes that affect the correct oral communication
Techniques of social intervention in Speech, Language and Communication disorders	Elaborate specific clinical reports for patients with communication and speech disorders
	Use the different methods of interviewing professionals in the school environment and the child's relatives in order to detect other factors of affection
	Indicate materials and resources adapted to the speech therapy intervention in audition in the school context
	Indicate the implementation of the bimodal system in patients with hearing disorders

05 Where Can I Do the Internship Program?

In order to offer a modern and advanced space for the completion of this Internship Program to today's professionals, TECH has made a careful selection of health centers specialized in the care of patients with Speech, Language and Communication Disorders for the completion of this program, located both nationally and internationally. An exclusive experience for those who wish to continue growing in their career.



Enroll in this 100% practical program and incorporate new advanced techniques to address patients with Dyslalia, Dyslexia, Autism, Dysphemia, among other conditions that impede their fluid communication"





Medical Approach in Speech, Language, | 13 **tech** and Communication Disorders

The student will be able to do this program at the following centers:



Medicine

Hospital HM Modelo

Country City
Spain La Coruña

Address: Rúa Virrey Osorio, 30, 15011,
A Coruña

Network of private clinics, hospitals and private specialized centers distributed throughout Spain

Related internship programs:

- Anaesthesiology and Resuscitation
- Palliative Care



Medicine

Hospital HM Regla

Country City
Spain León

Address: Calle Cardenal Landázuri, 2,
24003, León

Network of private clinics, hospitals and private specialized centers distributed throughout Spain

Related internship programs:

- Update on Psychiatric Treatment in Minor Patients



Medicine

Hospital HM Torrelodones

Country City
Spain Madrid

Address: Av. Castillo Olivares, s/n, 28250,
Torrelodones, Madrid

Network of private clinics, hospitals and private specialized centers distributed throughout Spain

Related internship programs:

- Anaesthesiology and Resuscitation
- Palliative Care

06

General Conditions

Civil Liability Insurance

This institution's main concern is to guarantee the safety of the trainees and other collaborating agents involved in the internship process at the company. Among the measures dedicated to achieve this is the response to any incident that may occur during the entire teaching-learning process.

To this end, this entity commits to purchasing a civil liability insurance policy to cover any eventuality that may arise during the course of the internship at the center.

This liability policy for interns will have broad coverage and will be taken out prior to the start of the practical training period. In this way, the professional will not have to worry in case he has to face an unexpected situation and will be covered until the end of the internship program at the center.



General Conditions of the Internship Program

The general terms and conditions of the internship agreement for the program are as follows:

1. TUTOR: during the Internship Program, students will be assigned with two tutors who will accompany them throughout the process, answering any doubts and questions that may arise. On the one hand, there will be a professional tutor belonging to the internship center who will have the purpose of guiding and supporting the student at all times. On the other hand, they will also be assigned with an academic tutor, whose mission will be to coordinate and help the students during the whole process, solving doubts and facilitating everything they may need. In this way, the student will be accompanied and will be able to discuss any doubts that may arise, both clinical and academic.

2. DURATION: The internship program will have a duration of three continuous weeks, in 8-hour days, 5 days a week. The days of attendance and the schedule will be the responsibility of the center and the professional will be informed well in advance so that they can make the appropriate arrangements.

3. ABSENCE: If the students does not show up on the start date of the Internship Program, they will lose the right to it, without the possibility of reimbursement or change of dates. Absence for more than two days from the internship, without justification or a medical reason, will result in the professional's withdrawal from the internship, therefore, automatic termination of the internship. Any problems that may arise during the course of the internship must be urgently reported to the academic tutor.

4. CERTIFICATION: Professionals who pass the Internship Program will receive a certificate accrediting their stay at the center.

5. EMPLOYMENT RELATIONSHIP: The Internship Program shall not constitute an employment relationship of any kind.

6. PRIOR EDUCATION: Some centers may require a certificate of prior education for the Internship Program. In these cases, it will be necessary to submit it to the TECH internship department so that the assignment of the chosen center can be confirmed.

7. DOES NOT INCLUDE: The Internship Program will not include any element not described in the present conditions. Therefore, it does not include accommodation, transportation to the city where the internship takes place, visas or any other items not listed

However, students may consult with their academic tutor for any questions or recommendations in this regard. The academic tutor will provide the student with all the necessary information to facilitate the procedures in any case.

07 Certificate

This program will allow you to obtain your **Internship Program diploma in Medical Approach in Speech, Language, and Communication Disorders** endorsed by **TECH Global University**, the world's largest online university.

TECH Global University is an official European University publicly recognized by the Government of Andorra ([official bulletin](#)). Andorra is part of the European Higher Education Area (EHEA) since 2003. The EHEA is an initiative promoted by the European Union that aims to organize the international training framework and harmonize the higher education systems of the member countries of this space. The project promotes common values, the implementation of collaborative tools and strengthening its quality assurance mechanisms to enhance collaboration and mobility among students, researchers and academics.

This **TECH Global University** title is a European program of continuing education and professional updating that guarantees the acquisition of competencies in its area of knowledge, providing a high curricular value to the student who completes the program.

Title: **Internship Program in Medical Approach in Speech, Language, and Communication Disorders**

Duration: **3 weeks**

Attendance: **Monday to Friday, 8-hour consecutive shifts**

Accreditation: **5 ECTS**





Internship Program
Medical Approach in
Speech, Language, and
Communication Disorders

Internship Program

Medical Approach in Speech, Language, and Communication Disorders

