

Hybrid Professional Master's Degree

Update on Psychiatry





Hybrid Professional Master's Degree

Update on Psychiatry

Course Modality: Hybrid (Online + Clinical Internship)

Duration: 12 months

Certificate: TECH Technological University

Teaching Hours: 1,620 h.

Website: www.techtitute.com/in/medicine/hybrid-professional-master-degree/hybrid-professional-master-degree-update-psychiatry

Index

01

Introduction

p. 4

02

Why Study this Hybrid
Professional Master's Degree?

p. 8

03

Objectives

p. 12

04

Skills

p. 16

05

Course Management

p. 20

06

Educational Plan

p. 26

07

Clinical Internship

p. 32

08

Where Can I Do the Clinical
Internship?

p. 38

09

Methodology

p. 44

10

Certificate

p. 52

01

Introduction

The current enormous prevalence of psychiatric disorders, exacerbated by the social, health and economic situation in recent years, has led to the development of new diagnostic methods and treatments. Thus, in order to face the contemporary challenges of this medical area, it is necessary to have the latest knowledge, so that patients can obtain accurate and appropriate care. This program, therefore, has been designed to update the specialists in this discipline in two distinct phases. In the first phase, they will assimilate online the latest contents in this area and then they will carry out a face-to-face and practical stay in a clinical center of recognized prestige where they will be able to complete their professional update.





“

Update yourself in a practical and dynamic way with this Hybrid Professional Master's Degree, which contains an online learning phase and a face-to-face stay in a clinical center of great international prestige"

The current era is defined, to a large extent, by social, economic, labor and even health uncertainty. This produces a feeling of insecurity and stress in millions of people, who are susceptible to psychiatric and psychological disorders. Thus, these types of conditions have become very common in recent years and, for this reason, science and researchers have taken it upon themselves to seek new solutions by improving diagnostic processes and treatments.

This, in turn, has meant that the specialists in this area need to be updated in order to integrate these advances in their daily work. Thus, this Hybrid Professional Master's Degree in Update on Psychiatry is presented as a great option for the professionals, who will find in the program the latest contents in this area, while it offers the opportunity to carry out a practical stay in a center of recognized prestige in the psychiatric field.

Thus, this program is structured in two parts, the first of which is developed in a 100% online format, while the second is carried out in a face-to-face mode of 3 weeks in a clinic. The first phase will provide the physicians with the most up-to-date knowledge in this field, and TECH's online methodology will allow them to continue with their work and personal life without any interruption, since this program will be completely adapted to their circumstances.

The stay will be carried out in consecutive 8-hour days, from Monday to Friday, and will allow the professionals to come into contact with patients while receiving guidance from the center's professionals, allowing them to work in a real environment where they can apply the new methods of diagnosis, follow-up and treatments acquired throughout the learning process.

This **Hybrid Professional Master's Degree in Update on Psychiatry** contains the most complete and up-to-date scientific program on the market. The most important features include:

- ♦ Development of more than 100 clinical cases presented by psychiatry professionals
- ♦ The graphic, schematic, and practical contents with which they are created, provide scientific and practical information on the disciplines that are essential for professional practice
- ♦ Comprehensive systematized action plans for the main pathologies in the psychiatry unit
- ♦ Presentation of practical workshops on diagnostic and therapeutic techniques for psychiatric patients
- ♦ An algorithm-based interactive learning system for decision-making in the clinical situations presented throughout the course
- ♦ Clinical practice guidelines on the approach to different psychiatric pathologies
- ♦ All of this will be complemented by theoretical lessons, questions to the expert, debate forums on controversial topics, and individual reflection assignments
- ♦ Content that is accessible from any fixed or portable device with an Internet connection
- ♦ In addition, you will be able to carry out a clinical internship in one of the best hospitals in the world



This program will allow you to learn the most advanced diagnostic methods in the field of Psychiatry"

“*A prestigious teaching staff is waiting for you to teach you the latest psychiatric treatments*”

In this proposal for a Hybrid Professional Master's Degree, of a professionalizing nature and blended learning modality, the program is aimed at updating psychiatry professionals. The contents are based on the latest scientific evidence, and oriented in a didactic way to integrate theoretical knowledge into medical practice.

Thanks to their multimedia content developed with the latest educational technology, they will allow the medical professional to learn in a contextual and situated learning environment, that is, a simulated environment that will provide immersive learning programmed to train in real situations. This program is designed around Problem-Based Learning, whereby the physician must try to solve the different professional practice situations that arise during the course. For this purpose, the students will be assisted by an innovative interactive video system created by renowned experts.

You will be able to meet real patients while being accompanied by a team of renowned specialists in Psychiatry.

This Hybrid Professional Master's Degree is the most updated program in the market and will produce an immediate update in the specialists.



02

Why Study this Hybrid Professional Master's Degree?

In the medical field of Psychiatry, theoretical knowledge is not enough, since it depends on close contact with the patient, his psychosocial and family environment. Taking this need as a starting point, TECH has designed a program based on an innovative learning modality. It combines the theoretical mastery of the most updated contents in this specialty with a practical stay in a first level hospital, where the doctor will be guided by prestigious experts to develop new skills in a holistic way.



“

This high-level program will enable you to identify patients with Eating Disorders and how to treat these conditions based on the latest scientific evidence"

1. Updating from the latest technology available

In this academic program, the physicians will be updated on the most recent guidelines and procedures for the management of patients with different Psychotic Disorders such as Schizophrenia. Likewise, they will examine the most modern equipment that are now integrated and complement the diagnosis of neurocognitive problems that must also be attended by specialists in Psychiatry.

2. Gaining In-Depth Knowledge from the Experience of Top Specialists

This Hybrid Professional Master's Degree will be attended by multiple experts in Psychiatry. In a first educational stage, 100% online, TECH teachers will clarify doubts and concepts of interest. Subsequently, a team of professionals will host the doctors in a practical stay in prestigious health centers, where they will share their experiences with them from the direct assistance of real cases.

3. Entering First-Class Clinical Environments

TECH has carefully selected the medical facilities that will host its students during the 3-week clinical internship included in this program. These institutions have a high prestige thanks to the health personnel working in them and their high specialization. In addition, these centers have the most sought-after technological resources in the medical field today.





4. Combining the Best Theory with State-of-the-Art Practice

This program breaks several schemes in the current educational market, where degrees with little focus on the proper practical training of psychiatrists prevail. Thus, TECH presents an innovative learning model that facilitates 100% face-to-face and intensive access of its specialists to first level health institutions in the field of Psychiatry.

5. Expanding the Boundaries of Knowledge

During this Hybrid Professional Master's Degree, physicians will have access to centers of international scope, located in different latitudes. This availability will facilitate the access of psychiatrists to different standards and modalities of care in their specialty. In this way, they will expand their work horizons and enhance their resumes with a unique professional trajectory of its kind.



*You will have full practical immersion
at the center of your choice"*

03 Objectives

The main objective of this Hybrid Professional Master's Degree in Update on Psychiatry is to provide the professionals with the most advanced and innovative knowledge in this medical area. To achieve this, TECH has been responsible for bringing together the best teaching staff that, through numerous multimedia resources, will update the specialists in a comfortable and simple way. In this way, they will be fully prepared to put this new knowledge into practice both in the classroom and in their own practice.



“

This program will help you achieve your main objective: to update and offer the best psychiatric treatments in your clinic"

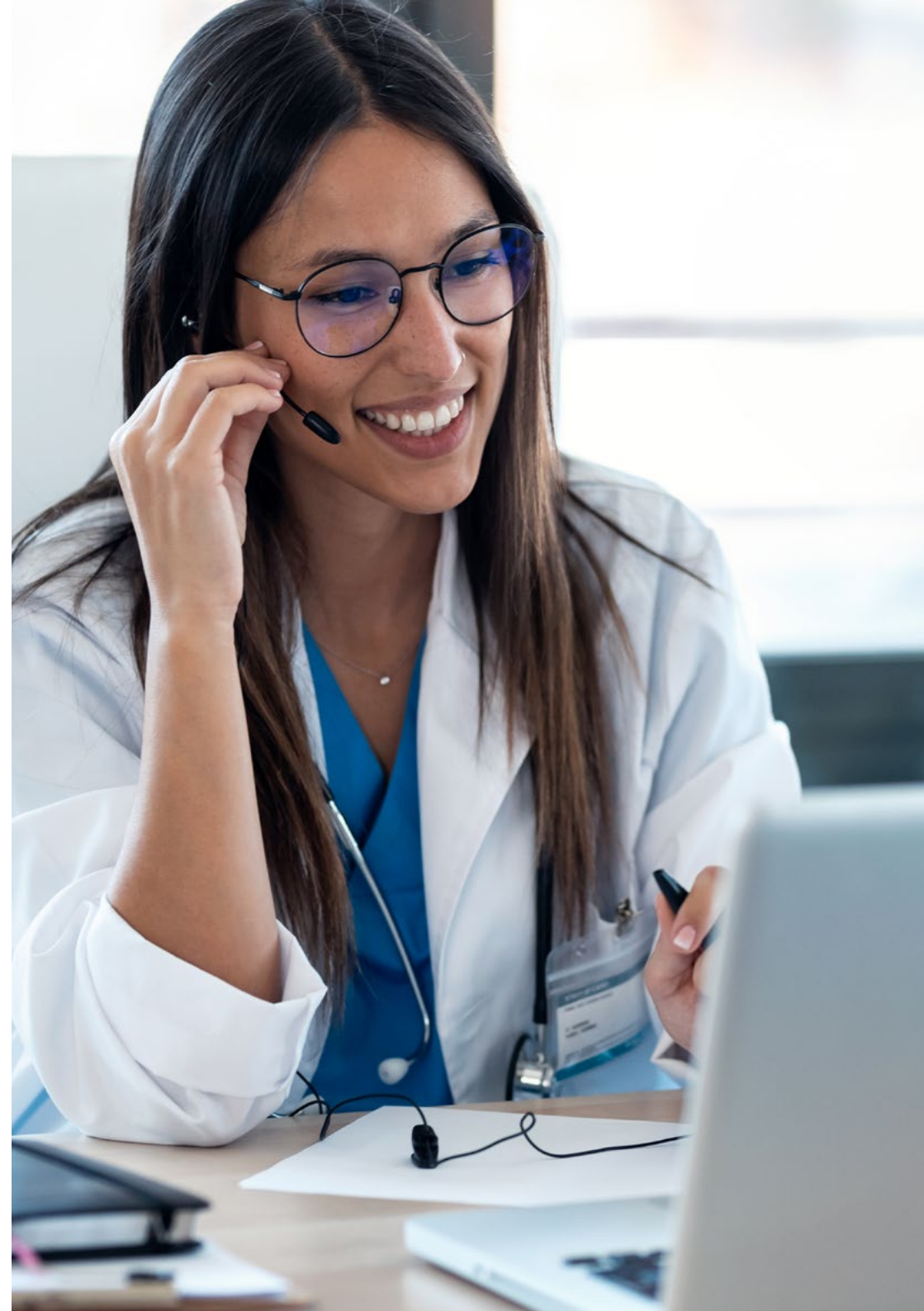


General Objective

- The general objective of this program is to perfect the professional's clinical interviewing, examination and diagnostic skills in Psychiatry, while providing new skills and clinical management strategies in this field. Likewise, this Hybrid Professional Master's Degree will allow you to master the skills of scientific research in Psychiatry and update therapeutic strategies to the latest advances in Psychiatry



The contents of this program have been elaborated according to the latest scientific evidence so that you can integrate the best diagnostic tools in your work"





Specific Objectives

Module 1. Schizophrenia and Other Psychotic Disorders

- ♦ Gain in-depth knowledge of the tools for differential diagnosis and the treatments for the main psychotic disorders
- ♦ Delve into antipsychotic pharmacology and the current evolution of these drugs

Module 2. Mood Disorders

- ♦ Gain in-depth knowledge in order to create a treatment plan for mood disorders
- ♦ Manage the most advanced therapeutic protocols for the care of the bipolar patient

Module 3. Anxiety or Fear-Related Disorders. Disorders Specifically Related to Stress. Dissociative Disorders

- ♦ Gain in-depth knowledge of the correct diagnosis oriented towards treatment
- ♦ Gain in-depth understanding of how anxiety disorders work

Module 4. Obsessive-Compulsive Disorder and Other Related Disorders

- ♦ Know the evolution of a framework in the classifications, as well as the pathophysiological data
- ♦ Establish advanced parameters to make a prognosis of response of the patient with body dysmorphic disorder from different therapeutic actions

Module 5. Eating Disorders

- ♦ Learn early identification of eating disorders
- ♦ Manage these disorders through psychosocial interventions and pharmacological therapy

Module 6. Disorders Due to Substance Use or Addictive Behaviors

- ♦ Gain in-depth knowledge of addictions to various substances
- ♦ Update students' knowledge of behavioral addictions such as pathological gambling

Module 7. Personality Disorders and Related Features

- ♦ Delve into the framework and classifications, as well as the correct formulation of the diagnosis and therapeutic plan
- ♦ Analyze the physical and clinical repercussions of personality disorders

Module 8. Neurocognitive Disorders

- ♦ Know the protocols for correct, early-on diagnosis, insisting on the differential diagnosis of potentially treatable disorders
- ♦ Monitor the diagnosed patient through close surveillance and the involvement of his psychosocial environment

Module 9. Sleep and Wakefulness Disorders

- ♦ Delve into the physiology of circadian cycles
- ♦ Evaluate the limits of normality and distinguish between primary and secondary sleep disorders

Module 10. Other Disorders

- ♦ Gain an in-depth and exhaustive perspective of mental health disorders
- ♦ Determining psychological or behavioral factors affecting diseases or disorders classified elsewhere

04 Skills

This Hybrid Professional Master's Degree in Update on Psychiatry will provide the professionals with a series of competencies that will allow them to continue performing their work with the utmost rigor, since this program includes the most updated and innovative knowledge in this medical area. Thus, this program is configured as the best option available to the professional to get up to date in a comfortable, simple and fast way.



“

This program will allow you to perfect your skills, updating them on the basis of the latest scientific advances in psychiatry"



General Skills

- ♦ Master the necessary tools to practice psychiatry from an up-to-date perspective that takes into account the new perspectives of the profession
- ♦ Apply the acquired knowledge and problem-solving skills in current and global environments within broader and more complex clinical contexts
- ♦ Be capable of integrating knowledge and gaining an in-depth vision of the different types of psychiatric disorders that a patient could suffer from
- ♦ Know how to correctly diagnose each type of disorder in function with its symptoms
- ♦ Understand and internalize the extent of psychiatric disorders and their impact on today's society
- ♦ Be able to perform a critical analysis, evaluation and synthesis of new and complex ideas related to the field of applied psychiatry
- ♦ Be able to promote progress in the treatment of psychiatric disorders in professional contexts





Specific Skills

- Be able to understand and work with different psychiatric disorders such as schizophrenia, delusional disorder or acute delusional disorder, among others
- Gain in-depth knowledge of the main changes in the evolution of the concept and therapeutic developments in mood disorders
- Know how to recognize anxiety disorders and work with them from primary care
- Know all the characteristics of Obsessive Compulsive Disorder and know how to treat it effectively
- Gain in-depth knowledge of the cultural, biological and social factors which have a direct effect on eating disorders
- Gain in-depth knowledge of the characteristics of different addiction that an individual could present
- Know the features related to personality disorders
- Know how to apply the protocols for a correct early diagnosis of neurocognitive disorders
- Understand the physiology of circadian cycles, evaluating the normal limits
- Acquire an in-depth and up-to-date perspective of eating disorders

05

Course Management

During learning, one of the most important elements is the teaching staff, and TECH is aware of this, so it has been responsible for selecting the best teaching staff in the area of Psychiatry. Thus, the specialists who take this Hybrid Professional Master's Degree will be in the best hands, since they will be able to update their knowledge in the company of active professionals who know perfectly the latest trends in this field of medicine.





“

The most prominent active professionals will transmit the latest advances in psychiatry, providing you with the most innovative and effective diagnostic tools”

Management



Dr. Baca García, Enrique

- ♦ Head of the Department of Psychiatry, University Hospital Fundación Jiménez Díaz, Madrid
- ♦ Full Professor at Columbia University, New York
- ♦ Full Professor of Psychiatry, Faculty of Medicine, Autonomous University of Madrid
- ♦ Degree in Medicine and Surgery from the Autonomous University of Madrid
- ♦ Doctor of Medicine and Surgery from the University of Alcalá

Professors

Dr. Peñuelas Calvo, Inmaculada

- ♦ Specialist Physician in the Psychiatry Department of the University Hospital Fundación Jiménez Díaz of Madrid
- ♦ Degree in Medicine from the University of Zaragoza
- ♦ Master's Degree in Autism from the University of San Jorge
- ♦ Master's Degree in Systemic Family Therapy from the Autonomous University of Barcelona
- ♦ Master's Degree in Clinical Practice in Child and Adolescent Psychiatry from the University of Barcelona
- ♦ Postgraduate Diploma in Bipolar Disorder from the University of Barcelona
- ♦ Postgraduate Diploma in Child and Adolescent Psychiatry from the University of Barcelona

Ms. Pérez Colmenero, Sonia

- ♦ Specialist in Clinical Psychology at the Child and Adolescent Mental Health Center of the Fundación Jiménez Díaz University Hospital in Madrid
- ♦ Specialist in Clinical Psychology at the University Hospital Rey Juan Carlos, Madrid
- ♦ Specialist in Clinical Psychology at the CHTD Anti-Drug Agency
- ♦ Author of numerous specialized publications
- ♦ Degree in Psychology from the University of Santiago de Compostela
- ♦ Master's Degree in Child and Adolescent Clinical Psychology
- ♦ Early Care Course through continued distance learning program
- ♦ Course in Psychiatry During and After the Health Emergency by COVID-19

Dr. Barrigón Estevez, María Luisa

- ◆ Psychiatrist at the Virgen del Rocío University Hospital
- ◆ Attending Physician in the Psychiatric Department in the FJD Health Research Institute Foundation
- ◆ Outpatient care in the Mental Health Team of Motril with on-call at the Clinic Hospital San Cecilio of Granada
- ◆ PhD in Psychiatry, University of Granada
- ◆ Degree in Medicine and Surgery from the University of Extremadura
- ◆ Specialist in Psychiatry with training completed in the Clinical University Hospital of Granada

Dr. Álvarez García, Raquel

- ◆ Associate Chief of Psychiatry at the University Hospital Rey Juan Carlos of Móstoles
- ◆ Associate Physician of Psychiatry of the Psychiatry Short Hospitalization Unit of the Rey Juan Carlos University Hospital
- ◆ PhD in Medicine and Surgery from the Autonomous University of Madrid
- ◆ Degree in Medicine from the Autonomous University Madrid
- ◆ Specialist in Psychiatry, Internal Medical Resident at the Jiménez Díaz foundation

Ms. Albarracín García, Lucía

- ◆ Researcher and Psychologist at the Fundación Jiménez Díaz University Hospital in Madrid
- ◆ Researcher in Psychology
- ◆ Participation in R&D projects related to Mental Health
- ◆ Degree in Psychology from the Complutense University Madrid
- ◆ Master's Degree in General Health Psychology from the Complutense University of Madrid

Dr. Guerrero Jiménez, Margarita

- ◆ Psychiatry Specialist at the Virgen de las Nieves Hospital
- ◆ Degree in Medicine from the University of Granada
- ◆ Master's Degree in Neuroscience and Pain from the University of Granada
- ◆ Master's Degree in Third Generation Psychotherapy from the International University of Valencia
- ◆ Postgraduate Diploma in Affective Disorders from the University of Alcalá de Henares

Dr. Izaguirre Gamir, Leire

- ◆ Specialist in Psychiatry at the Fundación Jiménez Díaz Hospital
- ◆ Collaborator in several scientific publications on Psychiatry

Dr. Brañas González, Antía

- ◆ Specialist in Psychiatry at the University Hospital Complex of Ourense
- ◆ Psychiatrist at the Virgen de la Salud Hospital in Toledo
- ◆ Psychiatrist at the Hospital Infanta Sofia in Madrid
- ◆ Psychiatrist at the Clinical Hospital San Carlos of Madrid
- ◆ PhD in Health Sciences from the University of Alcalá
- ◆ Degree in Medicine and Surgery from the University of Santiago de Compostela

Dr. Gota Garcés, José Miguel

- ◆ Specialist in Psychiatry
- ◆ Specialist in Community Mental Health Units
- ◆ Degree in Medicine from the University of Zaragoza
- ◆ Specialist in Psychiatry at the General Basic Hospital of Motril
- ◆ Member of the Intensive Community Treatment Team in the Mental Health Clinical Management Unit of the University Hospital Clínico San Cecilio, Granada

Dr. García Román, Cristina

- ♦ Specialist Physician in the Psychiatry Area of the University Hospital San Cecilio of Granada
- ♦ Psychiatrist at the Mental Health Hospitalization Unit of the Juan Ramón Jiménez Hospital
- ♦ Psychiatrist at the Mental Health Hospitalization Unit of the Hospital Nuestra Señora de la Montaña
- ♦ Degree in Medicine and Surgery from the University of Granada
- ♦ Master's Degree in Psychopathology and Health, UNED

Dr. De Granda-Beltrán, Ana María

- ♦ Medical Specialist in Mental Health
- ♦ Specialist Physician at the Institute of Health Research FJD
- ♦ Physician of the Suicidal Behavior Prevention and Treatment Consultation at the Moncloa Mental Health Center
- ♦ Author of numerous national scientific publications
- ♦ Degree in Medicine from the Complutense University of Madrid
- ♦ Master's Degree in Legal Psychiatry from the Complutense University of Madrid

Dr. González Rodríguez, Teresa

- ♦ Specialist in Psychiatry
- ♦ Medical specialist in Psychiatry at Psychiatry and Psychology Center Plaza España
- ♦ Doctor specializing in Psychiatry in Medical Center Averroes
- ♦ Degree in Medicine from the University of Seville
- ♦ Master's Degree in Clinical Medicine from the Camilo José Cela University
- ♦ Master's Degree in Legal Psychiatry from the Complutense University of Madrid

Dr. Porras Segovia, Alejandro

- ♦ Medical Specialist in Psychiatry at the University Hospital Fundación Jiménez Díaz in Madrid
- ♦ Attending Physician in Child and Adolescent Psychiatry at the Hospital Rey Juan Carlos de Móstoles
- ♦ Clinical researcher in the Health Research Institute of the Jiménez Díaz Foundation
- ♦ International stay at the INSERM of the University of Montpellier
- ♦ Author of more than 40 scientific articles
- ♦ Speaker at national and international psychiatry congresses and conferences
- ♦ PhD in Clinical Medicine and Public Health from the University of Granada
- ♦ Degree in Medicine and Surgery from the University of Granada
- ♦ Postgraduate Diploma in Affective Disorders from the University of Alcalá
- ♦ Postgraduate Diploma in Emergencies in Mental Health from the University of Alcalá

Dr. Pérez Fominaya, Margarita

- ♦ Assistant Physician in Outpatients at Nuestra Señora del Prado Hospital
- ♦ Responsible for the Psychogeriatrics Program at Nuestra Señora del Prado Hospital
- ♦ Responsible for the Psychiatry Interconsultation at the San José Institute Foundation
- ♦ Author of numerous scientific articles and book chapters
- ♦ Degree in Medicine and Surgery from the Complutense University of Madrid
- ♦ Specialist in Psychiatry from the Complutense University of Madrid
- ♦ Postgraduate Diploma in Psychoanalytical Psychotherapy and Clinical Management from the Pontificia Comillas University
- ♦ Master's Degree in Sex and Couple Therapy with a Gender Perspective by the University of Nebrija
- ♦ Postgraduate Diploma in Mental Health from the University of Alcalá de Henares
- ♦ Postgraduate Diploma in ADHD Throughout Life from the University of Alcalá de Henares



Dr. Carrillo de Albornoz Calahorro, Carmen Maura

- ♦ Assistant Specialist Physician in the Psychiatry Area of the Virgen de las Nieves University Hospital
- ♦ Specialist Physician in the Emergency Department of the Alto Guadalquivir High Resolution Hospital Complex
- ♦ Researcher in the Research Group E05-Bioenvironmental Psychiatry of the Biosanitary Research Institute of Granada
- ♦ Author of numerous scientific publications
- ♦ PhD in Clinical Medicine and Public Health
- ♦ Degree in Medicine from the University of Córdoba
- ♦ Postgraduate Diploma in ADHD Throughout Life from the Autonomous University of Alcalá de Henares
- ♦ Postgraduate Diploma in Mental Health from the Autonomous University of Alcalá de Henares
- ♦ Postgraduate Diploma in Affective Disorders from the Autonomous University of Alcalá de Henares
- ♦ University Expert in Psychogeriatrics at the European University Miguel de Cervantes

06

Educational Plan

The syllabus of this Hybrid Professional Master's Degree in Update on Psychiatry has been designed by leading specialists in this field, who have made sure to include the most in-depth and innovative content. Thus, the psychiatrists who takes this program will be able to delve into issues such as mood disorders, stress-related anxiety disorders, eating disorders or neurocognitive disorders.





“

This Hybrid Professional Master's Degree is supported by innovative teaching methods such as Relearning so that you can keep up to date with the latest developments in Psychiatry in a fast and flexible way"

Module 1. Schizophrenia and Other Psychotic Disorders

- 1.1. Epidemiology
 - 1.1.1. Risk Factors
 - 1.1.2. Etiopathogenesis of Psychosis
- 1.2. Classification
- 1.3. Schizophrenia
 - 1.3.1. Clinical Characteristics
- 1.4. Schizoaffective Disorder
 - 1.4.1. Clinical Characteristics
- 1.5. Schizotypal Disorder
 - 1.5.1. Clinical Characteristics
- 1.6. Acute and Transitory Psychotic Disorder
 - 1.6.1. Clinical Characteristics
- 1.7. Delusional Disorder
 - 1.7.1. Clinical Characteristics
- 1.8. Assessment and Diagnosis
- 1.9. Differential Diagnosis
- 1.10. Treatment

Module 2. Mood Disorders

- 2.1. Bipolar Disorders
 - 2.1.1. Epidemiology
 - 2.1.2. Risk Factors
 - 2.1.3. Etiopathogenesis
- 2.2. Bipolar Disorders
 - 2.2.1. Classification
 - 2.2.1.1. Clinical Characteristics
 - 2.2.1.2. Type I Bipolar Disorder
 - 2.2.1.3. Type II Bipolar Disorder
 - 2.2.2. Cyclothymia

- 2.3. Bipolar Disorders
 - 2.3.1. Assessment
 - 2.3.1.1. Diagnosis
- 2.4. Bipolar Disorders
 - 2.4.1. Evolution
 - 2.4.2. Prognosis
- 2.5. Bipolar Disorders
 - 2.5.1. Treatment
- 2.6. Depressive Disorders
 - 2.6.1. Epidemiology
 - 2.6.1.1. Risk Factors
 - 2.6.2. Etiopathogenesis
- 2.7. Depressive Disorders
 - 2.7.1. Classification
 - 2.7.2. Clinical Characteristics
 - 2.7.2.1. Depressive Disorder, Single Episode
 - 2.7.2.2. Recurring Depressive Disorder
 - 2.7.2.3. Dysthymic Disorder
 - 2.7.2.4. Mixed Anxiety and Depression Disorder
 - 2.7.3. Premenstrual Dysphoric Disorder
- 2.8. Depressive Disorders
 - 2.8.1. Assessment
 - 2.8.1.1. Diagnosis
 - 2.8.2. Differential Diagnosis
- 2.9. Depressive Disorders
 - 2.9.1. Evolution
 - 2.9.2. Prognosis
- 2.10. Depressive Disorders
 - 2.10.1. Treatment

Module 3. Anxiety or Fear-Related Disorders, Disorders Specifically Related to Stress, Dissociative Disorders

- 3.1. Anxiety or Fear-Related Disorders
 - 3.1.1. Epidemiology
 - 3.1.2. Risk Factors
 - 3.1.3. Etiopathogenesis
- 3.2. Anxiety or Fear-Related Disorders
 - 3.2.1. Classification
 - 3.2.2. Clinical Characteristics
- 3.3. Anxiety or Fear-Related Disorders
 - 3.3.1. Assessment
 - 3.3.2. Diagnosis
 - 3.3.3. Differential Diagnosis
- 3.4. Anxiety or Fear-Related Disorders
 - 3.4.1. Treatment
- 3.5. Disorders Specifically Related to Stress
 - 3.5.1. Classification
 - 3.5.2. Clinical Characteristics
- 3.6. Disorders Specifically Related to Stress
 - 3.6.1. Assessment
 - 3.6.2. Diagnosis
 - 3.6.3. Differential Diagnosis
- 3.7. Disorders Specifically Related to Stress
 - 3.7.1. Treatment
- 3.8. Dissociative Disorders
 - 3.8.1. Classification
 - 3.8.2. Clinical Characteristics
- 3.9. Dissociative Disorders
 - 3.9.1. Assessment
 - 3.9.2. Diagnosis
 - 3.9.3. Differential Diagnosis
- 3.10. Dissociative Disorders
 - 3.10.1. Treatment
 - 3.10.2. Prognosis

Module 4. Obsessive-Compulsive Disorder and Other Related Disorders

- 4.1. Obsessive Compulsive Disorder
 - 4.1.1. Epidemiology
 - 4.1.2. Risk Factors
 - 4.1.3. Etiopathogenesis
- 4.2. Obsessive Compulsive Disorder
 - 4.2.1. Assessment
 - 4.2.2. Diagnosis
 - 4.2.3. Differential Diagnosis
- 4.3. Obsessive Compulsive Disorder
 - 4.3.1. Treatment
 - 4.3.2. Prognosis
- 4.4. Body Dysmorphic Disorder
 - 4.4.1. Epidemiology
 - 4.4.2. Risk Factors
 - 4.4.3. Etiopathogenesis
- 4.5. Body Dysmorphic Disorder
 - 4.5.1. Assessment
 - 4.5.2. Diagnosis
 - 4.5.3. Differential Diagnosis
- 4.6. Body Dysmorphic Disorder
 - 4.6.1. Treatment
 - 4.6.2. Prognosis
- 4.7. Hypochondriasis
 - 4.7.1. Epidemiology
 - 4.7.2. Risk Factors
 - 4.7.3. Etiopathogenesis
- 4.8. Hypochondriasis
 - 4.8.1. Assessment
 - 4.8.2. Diagnosis
 - 4.8.3. Differential Diagnosis

- 4.9. Hypochondriasis
 - 4.9.1. Treatment
 - 4.9.2. Prognosis
- 4.10. Other Disorders
 - 4.10.1. Olfactory Reference Disorder
 - 4.10.2. Hoarding Disorder
 - 4.10.3. Body-Centered Repetitive Behavior Disorders

Module 5. Eating Disorders

- 5.1. Epidemiology
 - 5.1.1. Risk Factors
 - 5.1.2. Etiological Factors
- 5.2. Classification
- 5.3. Anorexia
 - 5.3.1. Clinical Characteristics
- 5.4. Bulimia
 - 5.4.1. Clinical Characteristics
- 5.5. Binge Eating Disorder
 - 5.5.1. Clinical Pathologies
- 5.6. Assessment
 - 5.6.1. Diagnosis
 - 5.6.2. Differential Diagnosis
- 5.7. Medical Aspects of Assertive Community Treatment
 - 5.7.1. Medical Complications
 - 5.7.2. Medical Assessment
 - 5.7.3. Analytical Results
- 5.8. Medical Treatment
- 5.9. Psychotherapeutic treatment
- 5.10. Other Specific Eating Disorders
 - 5.10.1. Avoidant or Restrictive Eating Disorder
 - 5.10.2. PICA Syndrome
 - 5.10.3. Rumination or Regurgitation Disorder

Module 6. Disorders Due to Substance Use or Addictive Behaviors

- 6.1. Disorders Due to Alcohol Consumption
- 6.2. Disorders Due to Cannabis Consumption
- 6.3. Disorders Due to Opioids Consumption
 - 6.3.1. Heroin
 - 6.3.2. Opioids Subject to Medical Prescription
- 6.4. Disorders Due to Cocaine Consumption
- 6.5. Disorders Due to Stimulants Consumption
- 6.6. Other Drugs
 - 6.6.1. Synthetic Cathinones
 - 6.6.2. Hallucinogens
 - 6.6.3. MDMA
 - 6.6.4. Dissociative Drugs (PCP and Ketamine)
 - 6.6.5. Inhalants
- 6.7. Disorders Due to Sedatives Consumption
 - 6.7.1. Hypnotics
 - 6.7.2. Anxiolytics
- 6.8. Disorders Due to Nicotine Consumption
- 6.9. Disorders Due to Caffeine Consumption
- 6.10. Disorders Due to Addictive Behavior
 - 6.10.1. Betting Disorders
 - 6.10.2. Disorders Due to Video Game Use

Module 7. Personality Disorders and Related Features

- 7.1. Theories of Personality
- 7.2. Personality: Traits Versus Disorder
- 7.3. Classifications of Personality Disorders
- 7.4. Epidemiology
- 7.5. Etiopathogenesis
- 7.6. Clinical Forms
- 7.7. Emotional Instability Disorder
- 7.8. Comorbidities in Personality Disorders
- 7.9. Evaluation, Diagnosis and Differential Diagnosis
 - 7.9.1. Diagnosis
 - 7.9.2. Differential Diagnosis
- 7.10. Treatment

Module 8. Neurocognitive Disorders

- 8.1. Classification
- 8.2. Delirium: Epidemiology
 - 8.2.1. Risk Factors
 - 8.2.2. Etiopathogenesis
- 8.3. Delirium: Evaluation
 - 8.3.1. Diagnosis
 - 8.3.2. Differential Diagnosis
- 8.4. Delirium: Treatment
 - 8.4.1. Non-Pharmacological
 - 8.4.2. Pharmacological
- 8.5. Dementia
 - 8.5.1. Common Aspects
- 8.6. Dementia Due to Alzheimer's Disease
- 8.7. Dementia Due to Cerebrovascular Disease
- 8.8. Dementia Due to Lewy's Disease
- 8.9. Frontotemporal Dementia
- 8.10. Other Specified Neurocognitive Disorders
 - 8.10.1. Mild Neurocognitive Disorder
 - 8.10.2. Amnestic Disorder
 - 8.10.3. Secondary Neurocognitive Syndrome

Module 9. Sleep and Wakefulness Disorders

- 9.1. Normal Sleep
 - 9.1.1. Basic Aspects
- 9.2. diagnostic assessment
- 9.3. Classification of Sleep and Wakefulness Disorders
- 9.4. Insomnia
 - 9.4.1. Clinical Symptoms
 - 9.4.2. Assessment
- 9.5. Insomnia
 - 9.5.1. Medical treatment

- 9.6. Insomnia
 - 9.6.1. Non-Pharmacological Treatment
- 9.7. Hypersomnia Disorders
- 9.8. Disorders of the Circadian Rhythm of Sleep and Wakefulness
- 9.9. Parasomnia Disorders
- 9.10. Monitoring Sleep

Module 10. Other Disorders

- 10.1. Catatonia
- 10.2. Impulse Control Disorder
- 10.3. Factitious Disorder
- 10.4. Mental or Behavioral Disorders Associated with Pregnancy
 - 10.4.1. Birth
 - 10.4.2. Post-Partum
- 10.5. Paraphilic Disorders
- 10.6. Sexual Dysfunctions
- 10.7. Attention Deficit Disorder
 - 10.7.1. Hyperactivity
- 10.8. Gender Conflict
- 10.9. Psychological or Behavioral Factors that Affect Illnesses or Diseases Classified in Another Part
- 10.10. Secondary Mental Health or Behavioral Syndromes Associated With Illnesses or Disorders Classified in Another Part



This syllabus will be accompanied by multimedia resources, such as infographics and videos, which will ideally complement this educational upgrade"

07

Clinical Internship

This program includes a clinical internship in a prestigious center in the field of Psychiatry. Throughout this internship, the professional will not only come into contact with real patients, but will also receive continuous guidance from specialists from the hospital itself. In this way, with this stay the professional will be able to consolidate the knowledge acquired during the online phase of the training.





“

The best way to consolidate the new knowledge acquired is through practice, and that is what this program offers: an on-site stay in a prestigious center"

This program includes an internship in a clinical center of recognized international prestige. These internships will be carried out over 3 weeks, and will have a schedule from Monday to Friday, with 8 consecutive hours of learning with a specialist. Thus, the professionals will be able to see real patients, observing live how diagnoses are made and how the corresponding psychiatric treatments are applied.

In this training proposal, completely practical in nature, the activities are aimed at the development and improvement of the competencies necessary for the provision of health care in areas and conditions that require a high level of qualification, and which are oriented to the specific training for the exercise of the activity, in an environment of safety for the patient and high professional performance.

Practical learning will be carried out with the active participation of the students, who will perform the appropriate and corresponding activities and procedures in each clinical case, with the accompaniment and guidance of the professors and other fellow trainees, facilitating teamwork and multidisciplinary integration as transversal competencies for the praxis of Psychiatry (learning to be and learning to relate).

The procedures described below will be the basis of the practical part of the training, and their implementation will be subject to the center's own availability and workload, the proposed activities being the following:



You will be able to complete immersive hands-on activities during the face-to-face stay, ensuring a great learning experience"



Module	Practical Activity
Management of psychotic and mood disorders	Applying long-acting injectable antipsychotics to patients with schizophrenia
	Indicate second-generation antipsychotics to control psychotic symptoms
	Evaluate the use of first-generation antipsychotics despite their side effects that result in motor limitations for the patient
	Perform psychosocial interventions through individual therapy, family therapy and vocational rehabilitation to help the patient find a job
	Treat patients who do not respond to drug therapy with electroconvulsive therapy.
Eating Disorders Update	Identifying side effects of panic attacks such as possible cardiovascular events
	Perform renal function tests and an electrocardiogram in the diagnosis of patients with possible eating disorders
	Indicate the use of antidepressants, antipsychotics, or mood stabilizers to treat some eating disorders
	Include cognitive behavioral approaches in individual, group, and/or family therapy sessions to help the patient identify and change negative and unhelpful thoughts
What's new on care for substance use disorders and addictive behaviors	Monitoring other complications associated with eating disorders such as low bone density (osteopenia or osteoporosis) and mild anemia
	Make a reliable diagnosis of the addictive disease or other emotional disorders or psychiatric disorders
	Define the most efficient and individualized therapeutic actions for each patient, according to their evolutionary stage
	Work with the patient on autonomy and assumption of responsibilities
Latest trends in the management of neurocognitive disorders and sleep/wakefulness disorders	Monitor the concurrence in the same person of a substance abuse disorder and a mental disorder
	Diagnose neurocognitive disorders based on neuropsychological tests
	Determine neurocognitive disorders based on electroencephalography and magnetic resonance imaging
	Assess patients with predisposing and precipitating risk factors for other pathologies
	Apply multiple sleep latency test and wakefulness conservation test for patients with different sleep disorders

Civil Liability Insurance

This institution's main concern is to guarantee the safety of the trainees and other collaborating agents involved in the internship process at the company. Among the measures dedicated to achieve this is the response to any incident that may occur during the entire teaching-learning process.

To this end, this educational entity undertakes to take out civil liability insurance to cover any eventuality that may arise during the internship during the stay at the internship center.

This liability policy for interns will have broad coverage and will be taken out prior to the start of the practical training period. That way professionals will not have to worry in case of having to face an unexpected situation and will be covered until the end of the internship program at the center.



General Conditions for Practical Training

The general terms and conditions of the internship agreement for the program are as follows:

1. TUTOR: During the Hybrid Professional Master's Degree, students will be assigned with two tutors who will accompany them throughout the process, answering any doubts and questions that may arise. On the one hand, there will be a professional tutor belonging to the internship center who will have the purpose of guiding and supporting the student at all times. On the other hand, they will also be assigned with an academic tutor whose mission will be to coordinate and help the students during the whole process, solving doubts and facilitating everything they may need. In this way, the student will be accompanied and will be able to discuss any doubts that may arise, both clinical and academic.

2. DURATION: The internship program will have a duration of three continuous weeks, in 8-hour days, 5 days a week. The days of attendance and the schedule will be the responsibility of the center and the professional will be informed well in advance so that they can make the appropriate arrangements.

3. ABSENCE: If the student does not show up on the start date of the Hybrid Professional Master's Degree, they will lose the right to it, without the possibility of reimbursement or change of dates. Absence for more than two days from the internship, without justification or a medical reason, will result in the professional's withdrawal from the internship, therefore, automatic termination of the internship. Any problems that may arise during the course of the internship must be urgently reported to the academic tutor.

4. CERTIFICATION: Professionals who pass the Hybrid Professional Master's Degree will receive a certificate accrediting their stay at the center.

5. EMPLOYMENT RELATIONSHIP: The Hybrid Professional Master's Degree shall not constitute an employment relationship of any kind.

6. PRIOR EDUCATION: Some centers may require a certificate of prior education for the Hybrid Professional Master's Degree. In these cases, it will be necessary to submit it to the TECH internship department so that the assignment of the chosen center can be confirmed.

7. DOES NOT INCLUDE: The Hybrid Professional Master's Degree will not include any element not described in the present conditions. Therefore, it does not include accommodation, transportation to the city where the internship takes place, visas or any other items not listed.

However, students may consult with their academic tutor for any questions or recommendations in this regard. The academic tutor will provide the student with all the necessary information to facilitate the procedures in any case.

08

Where Can I Do the Clinical Internship?

The specialists will be able to carry out their clinical internship in a center of recognized prestige in the field of Psychiatry. Thus, not only does they have the opportunity to be updated by the hand of great professionals, but they will also be able to increase their own medical reputation by participating for 3 intensive weeks in the hospital's activities.





“

This program will provide the specialists with an immediate update in the field of Psychiatry thanks to the clinical practices that will allow them to perform"



Students will be able to take the practical part of this Hybrid Professional Master's Degree in the following centers:



Medicine

Hospital HM Modelo

Country	City
Spain	La Coruña

Address: Rúa Virrey Osorio, 30, 15011, A Coruña

Network of private clinics, hospitals and specialized centers distributed throughout Spain.

Related internship programs:

- Anaesthesiology and Resuscitation
- Palliative Care



Medicine

Hospital HM Rosaleda

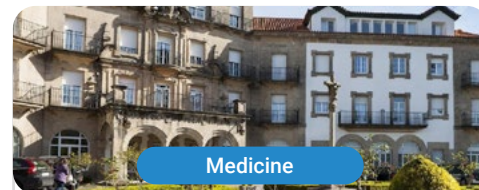
Country	City
Spain	La Coruña

Address: Rúa de Santiago León de Caracas, 1, 15701, Santiago de Compostela, A Coruña

Network of private clinics, hospitals and specialized centers distributed throughout Spain.

Related internship programs:

- Hair Transplantation
- Orthodontics and Dentofacial Orthopedics



Medicine

Hospital HM La Esperanza

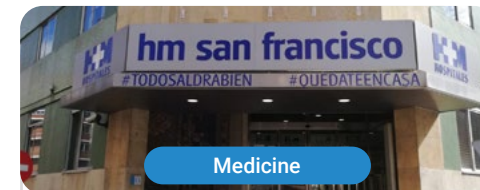
Country	City
Spain	La Coruña

Address: Av. das Burgas, 2, 15705, Santiago de Compostela, A Coruña

Network of private clinics, hospitals and specialized centers distributed throughout Spain.

Related internship programs:

- Oncology Nursing
- Clinical Ophthalmology



Medicine

Hospital HM San Francisco

Country	City
Spain	León

Address: C. Marqueses de San Isidro, 11, 24004, León

Network of private clinics, hospitals and specialized centers distributed throughout Spain.

Related internship programs:

- Update in Anesthesiology and Resuscitation
- Nursing in the Traumatology Service



Medicine

Hospital HM Regla

Country	City
Spain	León

Address: Calle Cardenal Landázuri, 2, 24003, León

Network of private clinics, hospitals and specialized centers distributed throughout Spain.

Related internship programs:

- Update on Psychiatric Treatment in Minor Patients



Medicine

Hospital HM Nou Delfos

Country	City
Spain	Barcelona

Address: Avinguda de Vallcarca, 151, 08023 Barcelona

Network of private clinics, hospitals and specialized centers distributed throughout Spain.

Related internship programs:

- Aesthetic Medicine
- Clinical Nutrition in Medicine



Medicine

Hospital HM Madrid

Country	City
Spain	Madrid

Address: Pl. del Conde del Valle de Súchil, 16, 28015, Madrid

Network of private clinics, hospitals and specialized centers distributed throughout Spain.

Related internship programs:

- Palliative Care
- Anaesthesiology and Resuscitation



Medicine

Hospital HM Montepíncipe

Country	City
Spain	Madrid

Address: Av. de Montepíncipe, 25, 28660, Boadilla del Monte, Madrid

Network of private clinics, hospitals and specialized centers distributed throughout Spain.

Related internship programs:

- Palliative Care
- Aesthetic Medicine



Medicine

Hospital HM Torrelodones

Country	City
Spain	Madrid

Address: Av. Castillo Olivares, s/n, 28250, Torrelodones, Madrid

Network of private clinics, hospitals and specialized centers distributed throughout Spain.

Related internship programs:

- Anaesthesiology and Resuscitation
- Palliative Care



Medicine

Hospital HM Sanchinarro

Country	City
Spain	Madrid

Address: Calle de Oña, 10, 28050, Madrid

Network of private clinics, hospitals and specialized centers distributed throughout Spain.

Related internship programs:

- Anaesthesiology and Resuscitation
- Palliative Care



Medicine

Hospital HM Nuevo Belén

Country	City
Spain	Madrid

Address: Calle José Silva, 7, 28043, Madrid

Network of private clinics, hospitals and specialized centers distributed throughout Spain.

Related internship programs:

- General and Digestive System Surgery
- Clinical Nutrition in Medicine



Medicine

Hospital HM Puerta del Sur

Country	City
Spain	Madrid

Address: Av. Carlos V, 70, 28938, Móstoles, Madrid

Network of private clinics, hospitals and specialized centers distributed throughout Spain.

Related internship programs:

- Palliative Care
- Clinical Ophthalmology



Medicine

Policlínico HM La Paloma

Country	City
Spain	Madrid

Address: Calle Hilados, 9, 28850, Torrejón de Ardoz, Madrid

Network of private clinics, hospitals and specialized centers distributed throughout Spain.

Related internship programs:

- Advanced Operating Room Nursing
- Orthodontics and Dentofacial Orthopedics



Medicine

Policlínico HM Sanchinarro

Country	City
Spain	Madrid

Address: Av. de Manoteras, 10, 28050, Madrid

Network of private clinics, hospitals and specialized centers distributed throughout Spain.

Related internship programs:

- Gynecological Care for Midwives
- Nursing in the Digestive System Service



Medicine

Policlínico HM Virgen del Val

Country	City
Spain	Madrid

Address: Calle de Zaragoza, 6, 28804, Alcalá de Henares, Madrid

Network of private clinics, hospitals and specialized centers distributed throughout Spain.

Related internship programs:

- Diagnosis in Physiotherapy
- Physiotherapy in Early Intervention



Medicine

Clínica El Jardín

Country	City
Argentina	Santiago del Estero

Address: Madre de Ciudades 4553, Barrio
Aeropuerto, 4200 Santiago del Estero

Clinic specializing in Mental Health

Related internship programs:

-Diagnosis and Psychiatric Treatment of Anxiety-Related
Disorders





“

Take advantage of this opportunity to surround yourself with expert professionals and learn from their work methodology”

09

Methodology

This academic program offers students a different way of learning. Our methodology uses a cyclical learning approach: **Relearning**.

This teaching system is used, for example, in the most prestigious medical schools in the world, and major publications such as the **New England Journal of Medicine** have considered it to be one of the most effective.



“

Discover Relearning, a system that abandons conventional linear learning, to take you through cyclical teaching systems: a way of learning that has proven to be extremely effective, especially in subjects that require memorization"

At TECH we use the Case Method

What should a professional do in a given situation? Throughout the program, students will face multiple simulated clinical cases, based on real patients, in which they will have to do research, establish hypotheses, and ultimately resolve the situation. There is an abundance of scientific evidence on the effectiveness of the method. Specialists learn better, faster, and more sustainably over time.

With TECH you will experience a way of learning that is shaking the foundations of traditional universities around the world.



According to Dr. Gérvas, the clinical case is the annotated presentation of a patient, or group of patients, which becomes a "case", an example or model that illustrates some peculiar clinical component, either because of its teaching power or because of its uniqueness or rarity. It is essential that the case is based on current professional life, trying to recreate the real conditions in the physician's professional practice.

“

Did you know that this method was developed in 1912, at Harvard, for law students? The case method consisted of presenting students with real-life, complex situations for them to make decisions and justify their decisions on how to solve them. In 1924, Harvard adopted it as a standard teaching method”

The effectiveness of the method is justified by four fundamental achievements:

1. Students who follow this method not only achieve the assimilation of concepts, but also a development of their mental capacity, through exercises that evaluate real situations and the application of knowledge.
2. Learning is solidly translated into practical skills that allow the student to better integrate into the real world.
3. Ideas and concepts are understood more efficiently, given that the example situations are based on real-life.
4. Students like to feel that the effort they put into their studies is worthwhile. This then translates into a greater interest in learning and more time dedicated to working on the course.



Relearning Methodology

At TECH we enhance the case method with the best 100% online teaching methodology available: Relearning.

This university is the first in the world to combine the study of clinical cases with a 100% online learning system based on repetition, combining a minimum of 8 different elements in each lesson, a real revolution with respect to the mere study and analysis of cases.

Professionals will learn through real cases and by resolving complex situations in simulated learning environments. These simulations are developed using state-of-the-art software to facilitate immersive learning.



At the forefront of world teaching, the Relearning method has managed to improve the overall satisfaction levels of professionals who complete their studies, with respect to the quality indicators of the best online university (Columbia University).

With this methodology, more than 250,000 physicians have been trained with unprecedented success in all clinical specialties regardless of surgical load. Our pedagogical methodology is developed in a highly competitive environment, with a university student body with a strong socioeconomic profile and an average age of 43.5 years old.

Relearning will allow you to learn with less effort and better performance, involving you more in your specialization, developing a critical mindset, defending arguments, and contrasting opinions: a direct equation to success.

In our program, learning is not a linear process, but rather a spiral (learn, unlearn, forget, and re-learn). Therefore, we combine each of these elements concentrically.

The overall score obtained by TECH's learning system is 8.01, according to the highest international standards.



This program offers the best educational material, prepared with professionals in mind:



Study Material

All teaching material is produced by the specialists who teach the course, specifically for the course, so that the teaching content is highly specific and precise.

These contents are then applied to the audiovisual format, to create the TECH online working method. All this, with the latest techniques that offer high quality pieces in each and every one of the materials that are made available to the student.



Surgical Techniques and Procedures on Video

TECH introduces students to the latest techniques, the latest educational advances and to the forefront of current medical techniques. All of this in direct contact with students and explained in detail so as to aid their assimilation and understanding. And best of all, you can watch the videos as many times as you like.



Interactive Summaries

The TECH team presents the contents attractively and dynamically in multimedia lessons that include audio, videos, images, diagrams, and concept maps in order to reinforce knowledge.

This exclusive educational system for presenting multimedia content was awarded by Microsoft as a "European Success Story".



Additional Reading

Recent articles, consensus documents and international guidelines, among others. In TECH's virtual library, students will have access to everything they need to complete their course.





Expert-Led Case Studies and Case Analysis

Effective learning ought to be contextual. Therefore, TECH presents real cases in which the expert will guide students, focusing on and solving the different situations: a clear and direct way to achieve the highest degree of understanding.



Testing & Retesting

We periodically evaluate and re-evaluate students' knowledge throughout the program, through assessment and self-assessment activities and exercises, so that they can see how they are achieving their goals.



Classes

There is scientific evidence on the usefulness of learning by observing experts. The system known as Learning from an Expert strengthens knowledge and memory, and generates confidence in future difficult decisions.



Quick Action Guides

TECH offers the most relevant contents of the course in the form of worksheets or quick action guides. A synthetic, practical, and effective way to help students progress in their learning.



10 Certificate

This Hybrid Professional Master's Degree in Update on Psychiatry guarantees, in addition to the most rigorous and updated training, access to a Hybrid Professional Master's Degree issued by TECH Technological University.



“

Successfully complete this program and receive your university qualification without having to travel or fill out laborious paperwork”

This **Hybrid Professional Master's Degree in Update on Psychiatry** contains the most complete and up-to-date program on the professional and educational field.

After the student has passed the assessments, they will receive their corresponding Hybrid Professional Master's Degree diploma issued by TECH Technological University via tracked delivery*.

In addition to the certificate, students will be able to obtain an academic transcript, as well as a certificate outlining the contents of the program. In order to do so, students should contact their academic advisor, who will provide them with all the necessary information.

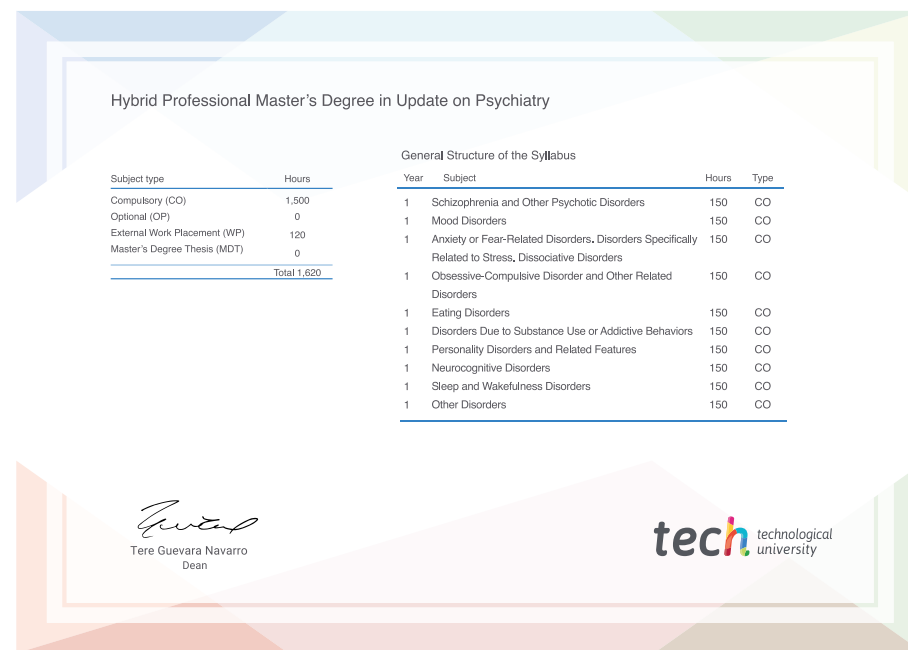
Title: Hybrid Professional Master's Degree in Update on Psychiatry

Course Modality: Hybrid (Online + Clinical Internship)

Duration: 12 months

Certificate: TECH Technological University

Teaching Hours: 1,620 h.



*Apostille Convention. In the event that the student wishes to have their paper certificate issued with an apostille, TECH EDUCATION will make the necessary arrangements to obtain it, at an additional cost.



Hybrid Professional Master's Degree

Update on Psychiatry

Course Modality: Hybrid (Online + Clinical Internship)

Duration: 12 months

Certificate: TECH Technological University

Teaching Hours: 1,620 h.

Hybrid Professional Master's Degree

Update on Psychiatry