

# Hybrid Professional Master's Degree

## Gynecologic Oncology





## Hybrid Professional Master's Degree

### Gynecologic Oncology

Modality: Hybrid (Online + Clinical Internship)

Duration: 12 months

Certificate: TECH Global University

60 + 5 créditos ECTS

Website: [www.techtute.com/us/medicine/hybrid-professional-master-degree/hybrid-professional-master-degree-gynecologic-oncology](http://www.techtute.com/us/medicine/hybrid-professional-master-degree/hybrid-professional-master-degree-gynecologic-oncology)

# Index

01

Introduction

---

*p. 4*

02

Why Study this Hybrid  
Professional Master's Degree?

---

*p. 8*

03

Objectives

---

*p. 12*

04

Skills

---

*p. 22*

05

Course Management

---

*p. 26*

06

Educational Plan

---

*p. 30*

07

Clinical Internship

---

*p. 40*

08

Where Can I Do the  
Clinical Internship

---

*p. 46*

09

Methodology

---

*p. 56*

10

Certificate

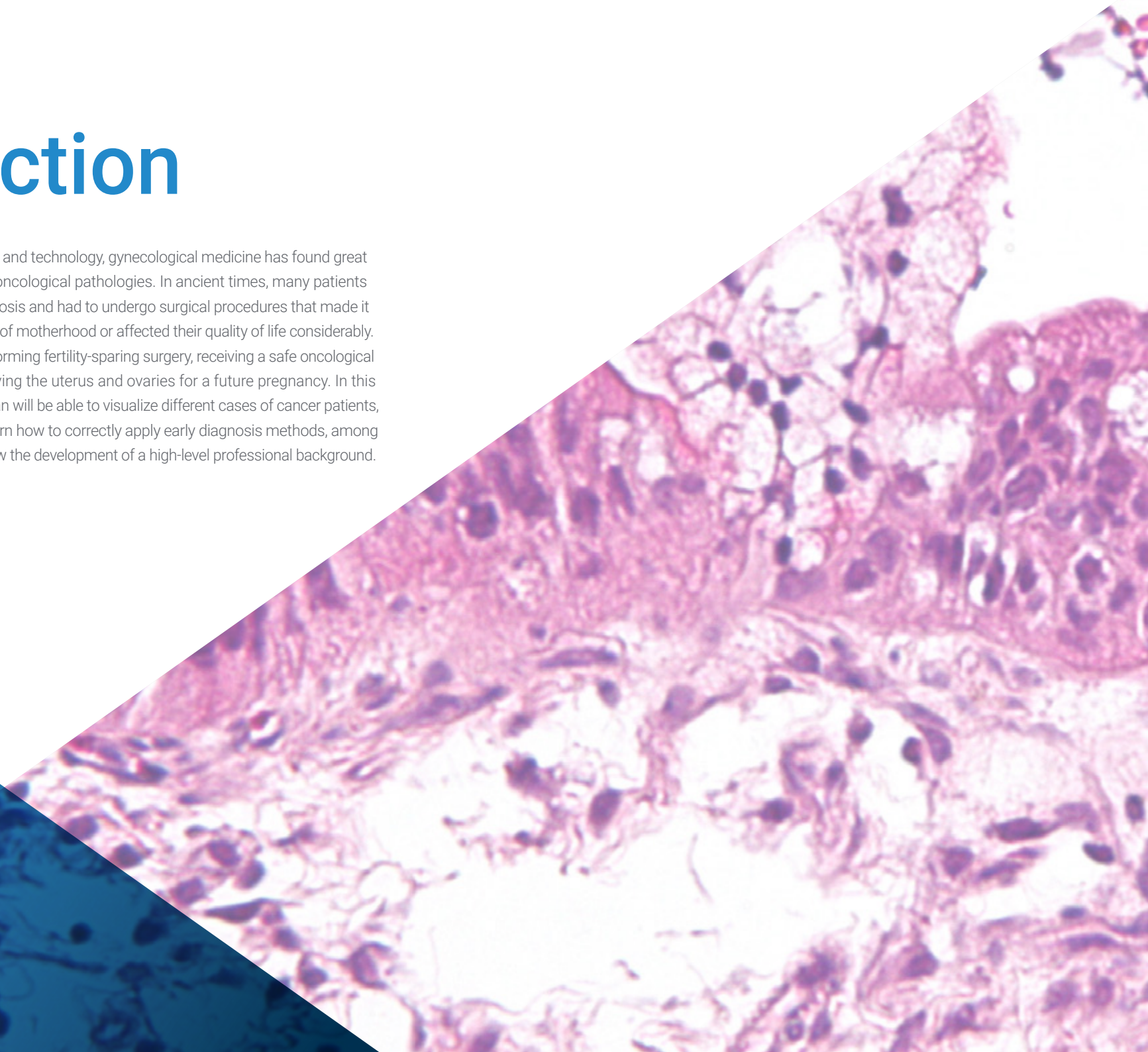
---

*p. 64*

# 01

# Introduction

Thanks to the many advances in science and technology, gynecological medicine has found great solutions for the health of women with oncological pathologies. In ancient times, many patients were in fertile stages at the time of diagnosis and had to undergo surgical procedures that made it impossible for them to achieve their goal of motherhood or affected their quality of life considerably. Nowadays, there is the possibility of performing fertility-sparing surgery, receiving a safe oncological treatment and at the same time preserving the uterus and ovaries for a future pregnancy. In this regard, in this TECH program the physician will be able to visualize different cases of cancer patients, differentiate cervical pathologies and learn how to correctly apply early diagnosis methods, among other very interesting details that will allow the development of a high-level professional background.





“

*Specialize in Gynecologic Oncology and stand out professionally in a booming sector. You will learn the latest developments in the industry from professionals”*

TECH presents this Hybrid Professional Master's Degree program that will allow you to develop, with a real patient and in a hospital setting with state-of-the-art resources, your maximum potential and growth in the area of gynecologic oncology. You will approach patients with oncologic pathology by the hand of the best specialists, using the latest techniques based on scientific evidence, and achieving results previously difficult to achieve.

The social and emotional burden that gynecological cancer has on today's society means that scientific and professional interest in this discipline is on the rise. But advances in surgery and gynecologic oncology make it essential for specialists to maintain constant training in order to continue providing quality care. This Hybrid Professional Master's Degree program offers the opportunity to update knowledge in a practical way.

Gynecologic Oncology has undergone remarkable development in the past few years. Both specialties, gynecology and oncology, face increasingly complex challenges associated with the development of diagnostic and therapeutic techniques. Not only this, but also technological and IT innovations, and the use of biomaterials and new, much more conservative, surgical procedures.

These new developments force the specialist to constantly update his knowledge, to study the available evidence and to develop new competencies, which allow him to keep up with the technological and social changes to improve the health of patients.

This program will allow the specialist to access this knowledge in a practical way, without renouncing scientific rigor, adapting the training process to their personal and professional needs. In this way, he will integrate into his daily clinical practice the latest advances in Gynecologic Oncology, marking a before and after in his professional career.

This **Hybrid Professional Master's Degree in Gynecologic Oncology** contains the most complete and up-to-date scientific program on the market. The most important features include:

- ♦ Development of more than 100 clinical cases, recorded with POV (*Point Of View*) systems from different angles, presented by experts in Gynecology and other specialties
- ♦ The graphic, schematic, and practical contents with which they are created, provide scientific and practical information on the disciplines that are essential for professional practice
- ♦ Presentation of practical workshops on procedures and techniques
- ♦ An algorithm-based interactive learning system for decision-making in the clinical situations presented throughout the course
- ♦ Action protocols and clinical practice guidelines, which cover the most important latest developments in this specialist area
- ♦ Special emphasis on test-based medicine and research methodologies in surgical procedures
- ♦ All of this will be complemented by theoretical lessons, questions to the expert, debate forums on controversial topics, and individual reflection assignments
- ♦ Content that is accessible from any fixed or portable device with an Internet connection
- ♦ In addition, you will be able to carry out a clinical internship in one of the best hospitals in the world

“

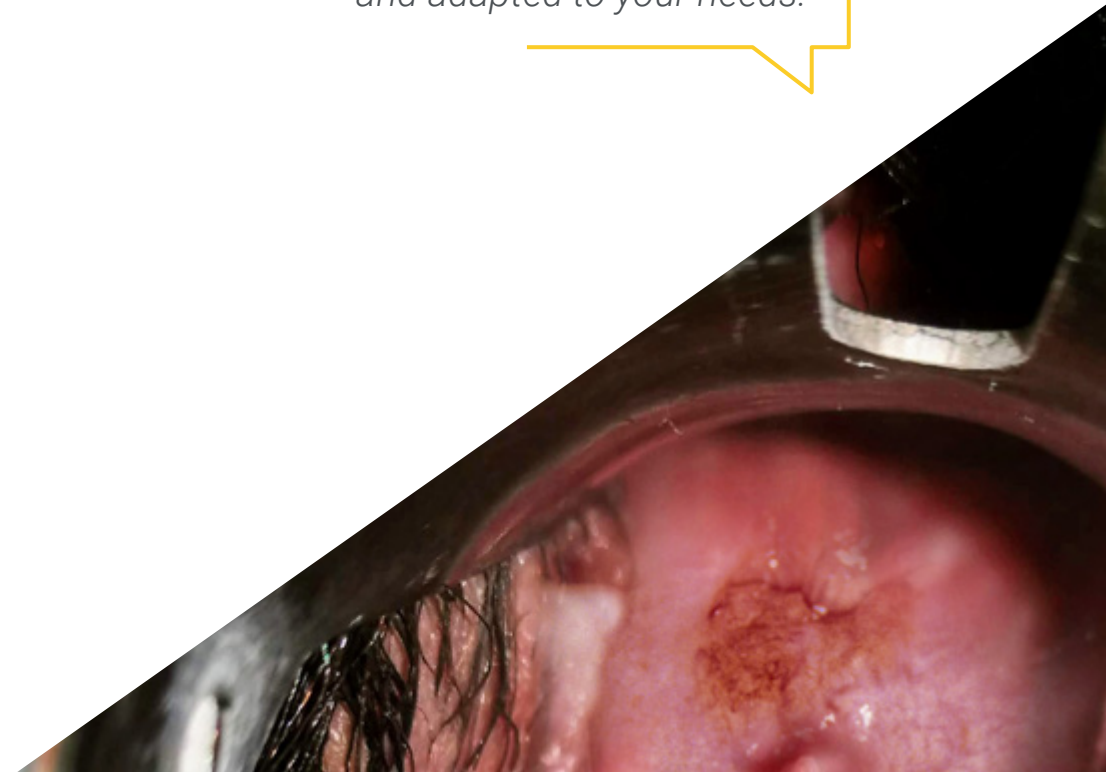
*The scientific evidence on which this program is based increases the quality of medical and surgical practice. Staying current is key to providing better patient care"*

In this Hybrid Professional Master's Degree proposal, of a professionalizing nature and blended learning modality, the program is aimed at updating medical professionals who perform their functions in the Gynecologic Oncology unit, and who require a high level of qualification. The contents are based on the latest scientific evidence, and oriented in a didactic way to integrate theoretical knowledge into medical practice, and the theoretical-practical elements will facilitate the updating of knowledge and will allow decision making in patient management.

Thanks to their multimedia content developed with the latest educational technology, they will allow medical professional a situated and contextual learning, that is, a simulated environment that will provide an immersive learning programmed to train in real situations. This program is designed around Problem-Based Learning, whereby the professional must try to solve the different professional practice situations that arise throughout the program. For this reason, you will be assisted by an innovative, interactive video system created by renowned and experienced experts in the field of Intensive Care units who also have extensive teaching experience.

*This highly scientifically rigorous training provides immersive learning programmed to train for real-life situations.*

*Update your knowledge through the Hybrid Professional Master's Degree in Gynecologic Oncology, in a practical way and adapted to your needs.*



02

# Why Study this Hybrid Professional Master's Degree?

Within the concept of total quality in professional performance, training plays an essential role. Knowing new methods and updating precepts about the diagnosis and therapy of diseases is an obligation of every physician. For this reason, TECH expands its catalog of programs with this Hybrid Professional Master's Degree that includes all the most updated content on Gynecologic Oncology 100% online and a 3-week on-site stay in a reference clinical center to live an unprecedented academic experience. This is how the student will be able to configure a profile according to the needs of today's patient and provide the best possible service from their practice.







“

*Only with TECH will you be able to enjoy this new training model that integrates the theoretical with the practical in an effective way for the perfection of your medical technique"*

### 1. Updating from the latest technology available

Nowadays, cancer patients find different options to recover their health. Thanks to advances in Gynecologic Oncology, including conservative fertility treatments, ovarian preservation, minimally invasive surgeries or the sentinel lymph node technique among many other methods offered by specialized centers. During this program, the student will be able to show in close-up the different treatments and techniques to improve the patient's quality of life together with experts in the field.

### 2. Gaining In-Depth Knowledge from the Experience of Top Specialists

All the content of this program has been designed by true experts in Gynecologic Oncology. Therefore, the student will find updated study material with the quality guarantees that they deserve. You will see from the experience of the experts who will accompany you throughout the process the importance of communication and decision-making skills in this area of Medicine

### 3. Entering First-Class Clinical Environments

TECH uses the best specialized centers in the area of study to offer these types of programs. Here the student will have the necessary resources to learn the latest treatments, diagnostic techniques and effective approaches in Gynecologic Oncology, even going beyond their own borders to acquire a broader professional background.





#### 4. Combining the Best Theory with State-of-the-Art Practice

Thanks to this differentiating teaching method, TECH has positioned itself as a leading institution in avant-garde education. The student will be able to participate in the daily clinical processes and, under the guidance of the most experienced physicians, test their theoretical learning put into practice from the first day, during the 3 weeks of the course.

#### 5. Expanding the Boundaries of Knowledge

With TECH there are no borders. Students from all over the world have benefited from this type of training, since they can access an enriching experience in one of the best clinical centers of their choice anywhere in the world, according to the program chosen. Broaden your knowledge from an innovative and modern point of view, leaving your comfort zone, but with everything you need to enjoy the experience.



*You will have full hands-on immersion at the center of your choice"*

# 03

## Objectives

Cancer of the female reproductive system is one of the most frequent pathologies. However, thanks to the intensive and prolonged study by countless professionals in Gynecologic Oncology, it has been possible to establish increasingly effective preventive, diagnostic and treatment guidelines. Given the importance of this fact, TECH has considered it necessary to develop a program through which specialists in this area can learn, in a multidisciplinary way, the new developments that have arisen in this area to apply them in their practice and improve their clinical service.





“

*A cutting-edge program to fight statistics and to perfect your medical skills in the diagnosis and treatment of cancer in women”*



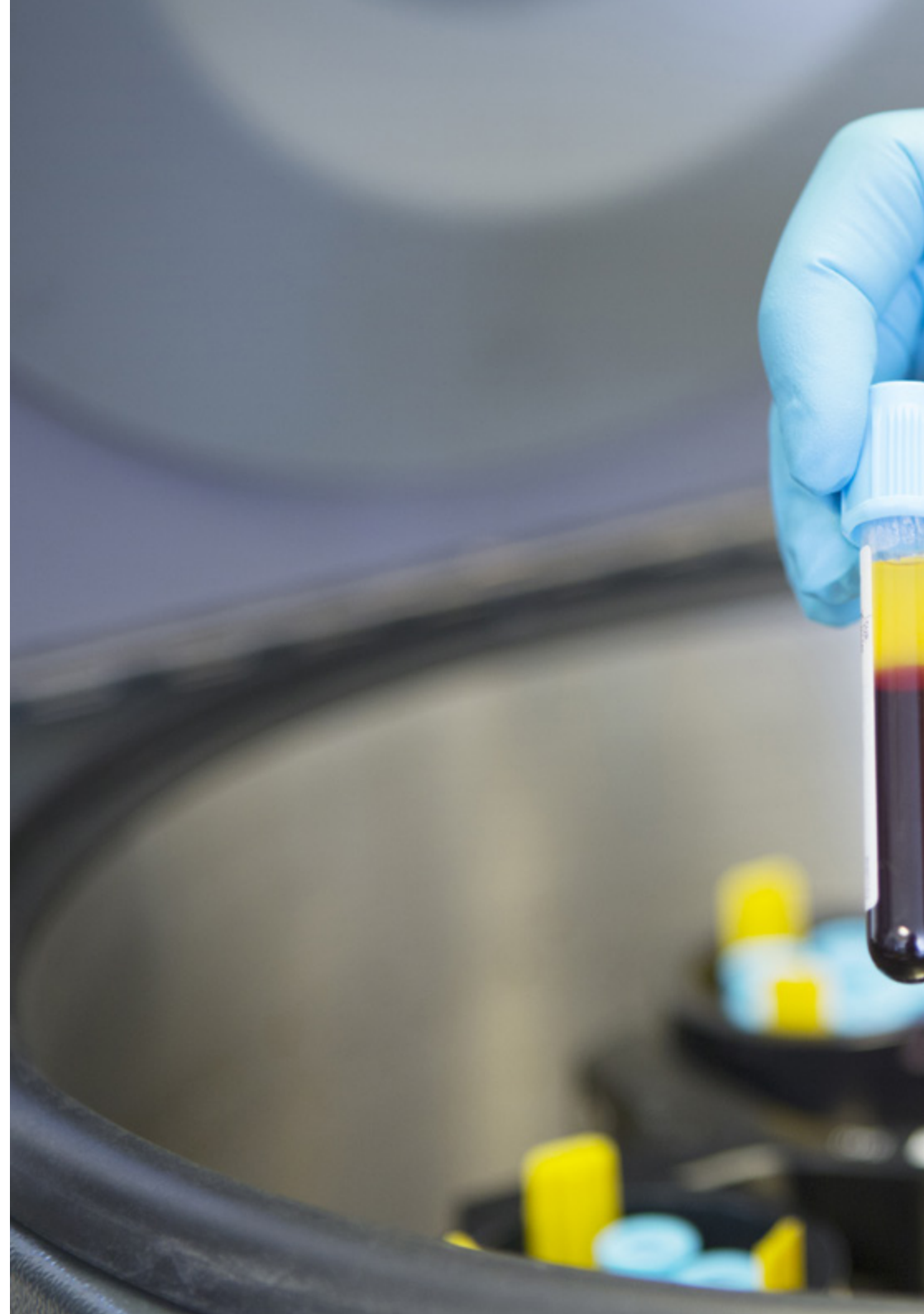
### General Objective

---

- The main objective of this Hybrid Professional Master's Degree, designed by experts in the field with years of experience in clinical management, is to provide the specialist with all the information and material they need to update their medical knowledge in the procedures and techniques performed in Gynecologic Oncology. In this way, you will be able to incorporate the advances of the discipline into your daily practice to increase the quality of your daily medical practice



*The best program in the health and medical field to update you on the different fertility preservation techniques in young patients and their oncological implications"*





## Specific Objectives

---

### Module 1. Biological Basis of Cancer

- ◆ Recognize and understand the molecular bases of carcinogenesis as well as its development and metastasis production
- ◆ Define the basis of cellular growth regulation
- ◆ Understand the role of carcinogens in the formation of genital cancer
- ◆ Gain up-to-date knowledge of cancer genetics
- ◆ Understand the cellular mechanisms of programmed cell death and apoptosis and their relationship and activity with malignant pathology
- ◆ Interpret the mechanisms of cancer production and distant metastasis at a molecular level
- ◆ Identify the origins of genetic alterations that provoke cancer
- ◆ Identify the epigenetic changes and oncogenes related with genital tract tumor pathology
- ◆ Explain the mechanisms tumor neof ormation in blood vessels
- ◆ Recognize respiratory symptomatology, such as that caused by pleural effusion, in the treatment of gynecologic cancer

### **Module 2. Basis of Chemotherapy Treatment, Adverse Effects and New Therapies**

- ♦ Identify the basis for the use of chemotherapeutics in gynecologic oncology, as well as their adverse effects and complications
- ♦ Identify the basic factors that are involved in chemotherapy treatment
- ♦ Highlight the influence of chemotherapy in the cellular cycle
- ♦ Identify the action mechanisms of antineoplastic agents
- ♦ Recognize the mechanisms for the resistance of medical treatments in gynecologic cancer
- ♦ Gain up-to-date knowledge of toxicity and side effects
- ♦ Review the available antineoplastic drugs and their characteristics
- ♦ Identify cases in which patient observation can be used without using adjuvant treatment
- ♦ Understand the role of new tests such as positron emission tomography for cervical cancer
- ♦ Evaluate the role of tumor markers such as SCC
- ♦ Acquire up-to-date knowledge of the role of laparoscopy in performing a radical hysterectomy and the para-aortic lymphadenectomy for non-early tumor stages
- ♦ Evaluate the use of medical and surgical therapy in metastatic, recurrent or persistent illness
- ♦ Study and analyze the postoperative care of patients to identify any complications early on
- ♦ Appropriately assess the role of chemotherapy in gestational trophoblastic disease
- ♦ Manage the progression of pelvic tumor disease in the most effective way

### **Module 3. Endometrial Cancer I**

- ♦ Identify the different types of endometrial cancer and perform the appropriate diagnostic and disease extension methods
- ♦ Gain up-to-date knowledge on the epidemiology etiopathogenesis of endometrial cancer
- ♦ Evaluate patients with a family history of hereditary carcinomas such as Lynch Syndrome
- ♦ Understand the diagnostic process for endometrial cancer
- ♦ Implement new molecular diagnostic tests for premalignant and malignant endometrial pathology
- ♦ Understand and implement surgical treatments in an appropriate way in the treatment of endometrial cancer
- ♦ Establish the different uses of the surgical approach both by laparotomy and laparoscopy in endometrial cancer, and update knowledge on the application of robotic surgery in endometrial cancer
- ♦ Review adjuvant therapeutic options after primary treatment of endometrial cancer
- ♦ Analyze the role of radiotherapy and adjuvant chemotherapy in endometrial cancer
- ♦ Understand the applications of hormonal treatment in endometrial cancer

### **Module 4. Endometrial Cancer II**

- ♦ Evaluate the distinct types of patients with endometrial cancer in order to implement the most appropriate treatment in each individual case
- ♦ Recognize precancerous endometrial lesions and apply the most appropriate treatment
- ♦ List the different histological types of endometrial cancer and the different tumor types
- ♦ Recognize and interpret the different imaging tests needed for the diagnosis and staging of endometrial cancer



- ♦ Interpret the distinct tumor markers and their use in the possible screening of endometrial cancer
- ♦ Classify endometrial pathology by FIGO prognostic classification
- ♦ Classify the different high and low-risk endometrial tumors
- ♦ Study the new surgical techniques for treating high-risk endometrial cancer
- ♦ Gain up-to-date knowledge on the treatment of some specific endometrial tumors such as the clear cell and serous papillary types
- ♦ Review how to deal with recurring endometrial cancer including surgery, radiotherapy and /or chemotherapy as well as evidence on the follow-up treatment and prognosis of endometrial tumors

#### **Module 5. Cervical Cancer I**

- ♦ Identify pre-invasive pathologies of the cervix and correctly apply early diagnosis methods
- ♦ Laparoscopic removal of pelvic sentinel lymph node
- ♦ Determine the etiology and etiopathogenesis of cervical cancer and its stages of development
- ♦ Gain up-to-date knowledge of the distant imaging techniques for diagnosing cervical cancer such as magnetic resonance and scanning
- ♦ Acquire up-to-date knowledge of the treatment for preinvasive cervical lesions including surgery and immunotherapy
- ♦ Identify the role of the sentinel node in cervical cancer and the pelvic sentinel node labeled with indocyanine green
- ♦ Gain up-to-date knowledge of the use of concurrent and neoadjuvant chemotherapy in cervical cancer
- ♦ Compare the characteristics of squamous cell carcinoma and cervical adenocarcinoma

#### **Module 6. Cervical Cancer II**

- ♦ Classify and treat cervical cancers in the most appropriate way
- ♦ Know the risk factors for contracting the human papillomavirus
- ♦ Review the application of techniques for early diagnosis of cervical cancer and hereditary-familial diseases affecting the cervix
- ♦ Evaluate the role of FIGO and TNM classification in cervical cancer and its prognostic role
- ♦ Revise the different invasive surgical techniques for cervical cancer, especially the different types of radical hysterectomy with or without nerve preservation
- ♦ Identify the indications of chemotherapy and radiotherapy in cervical cancer
- ♦ Gain up-to-date knowledge of the invasive cervical adenocarcinoma and adenocarcinoma in situ

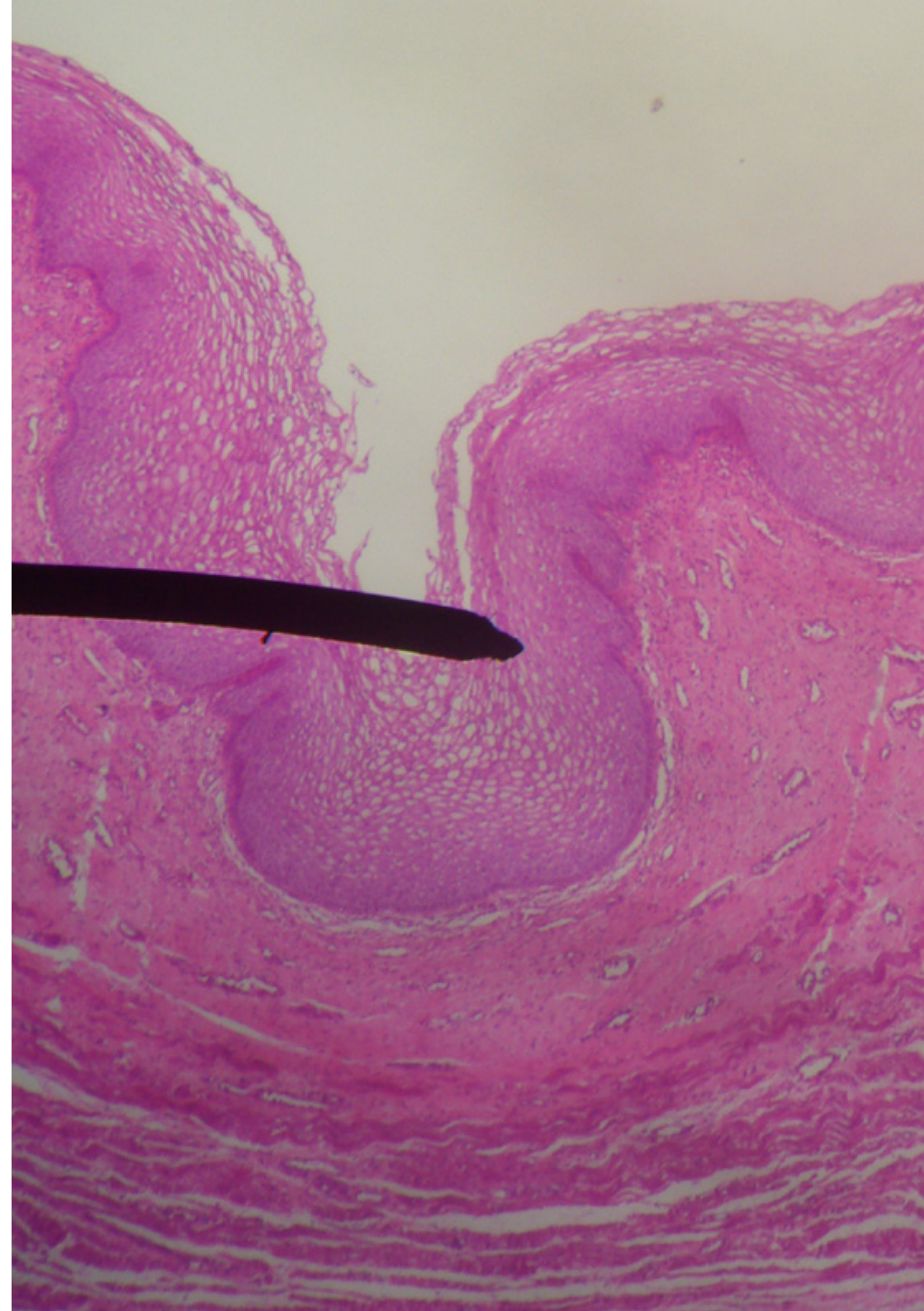
#### **Module 7. Ovarian Cancer I**

- ♦ Identify patients at risk of ovarian cancer and perform a precise preoperative diagnosis
- ♦ Review the epidemiology and etiopathogenesis of ovarian and fallopian tube cancer
- ♦ Review the possibilities of screening by ultrasound and the tumor markers for the early detection of ovarian cancer
- ♦ Establish the new criteria for pathological and molecular classification of ovarian cancer
- ♦ Evaluate the different clinical manifestations, highlighting the value of ultrasound, magnetic resonance imaging and scanning in the diagnosis of ovarian cancer

- ♦ Analyze the role of tumor serological markers CA125, CA19.9, CEA, HE4 and other rare tumor serological markers in ovarian cancer
- ♦ Specifically analyze the role of complete cytoreduction and its prognostic implications
- ♦ Analyze the role of interval surgery in ovarian cancer and establish the most appropriate adjuvant chemotherapy steps and biological treatments for each case
- ♦ Identify the possibilities available for the follow-up of patients with ovarian cancer
- ♦ Analyze the controversies on the management of ovarian and fallopian tube cancer

### Module 8. Ovarian Cancer II

- ♦ Apply the most appropriate surgical or chemotherapy treatment for each case of ovarian cancer
- ♦ To evaluate STIC tubal lesions as precursors of ovarian cancer
- ♦ Gain up-to-date knowledge on hereditary-familial ovarian cancer and new predisposing genetic mutations
- ♦ Indicate the distinct pathological types of ovarian and fallopian tube cancer and relate them to the different diagnostic tests for studying the extension and initial diagnosis of each one
- ♦ Classify the different types of ovarian cancer according to the FIGO classification and determine the general approach surgical procedures
- ♦ Evaluate when a patient should preferentially receive neoadjuvant chemotherapy for ovarian cancer
- ♦ Analyze the role of radiotherapy and hormone therapy in endometrial cancer
- ♦ Review and gain up-to-date knowledge on intraperitoneal chemotherapy treatments and hyperthermic therapy in ovarian and peritoneal cancer



**Module 9. Vulvar Cancer I**

- ♦ Identify the premalignant pathology in the vulva and apply the appropriate diagnostic techniques in each case
- ♦ Interpret normal colposcopic and vulvar examination, and interpret abnormal findings on both colposcopic and vulvosopic examination
- ♦ Describe the etiology of vulva cancer and its relationship to recurrent HPV infection
- ♦ Assess the role of possible vulvar cancer screening and hereditary risk factors in pathological alterations
- ♦ Describe the different histological types of vulvar cancer and the most efficient tests for diagnosis and extension study
- ♦ Review the use of tumor markers in vulvar cancer
- ♦ Review the procedure for addressing a primary vulvar lesion
- ♦ Update on the management of advanced vulvar cancer, both primary tumor and lymph node chains
- ♦ Evaluate how to deal with a recurrent vulva carcinoma
- ♦ Review the follow-up care of vulvar cancer patients for early detection of recurrences
- ♦ Study the characteristics and treatment of tumors of the Bartholin's glands and basal cell carcinomas of the vulva

**Module 10. Vulvar Cancer II**

- ♦ Diagnose Invasive Paget's Disease of the vulva. Assess the most appropriate management for each case of the disease
- ♦ Review the etiopathogenesis of precancerous lesions of the vulva and VIN and VAIN lesions
- ♦ Review staging of vulvar cancer according to FIGO classification

- ♦ Review the prevalence, and identify the types, clinical manifestations, diagnosis and treatment of non-invasive Paget's disease in the vulvar area
- ♦ Relate the clinical manifestations of invasive carcinoma of the vulva to its dissemination routes
- ♦ Revise the treatment and handling of the inguinal and pelvic ganglionic chains
- ♦ Assess the sentinel lymph node technique for vulvar pathology
- ♦ Analyze the role of chemotherapy and radiotherapy in advanced vulvar cancer
- ♦ Study the prognosis of the different types of vulva carcinoma
- ♦ Evaluate the clinical and diagnostic characteristics as well as how to manage melanoma of the vulva
- ♦ Review the clinical aspects of verrucous carcinoma of the vulva and the different types of vulvar sarcoma, as well as their characteristics and management

**Module 11. Uterine Sarcoma I**

- ♦ Identify and classify the different anatomopathological forms of uterine sarcoma
- ♦ Appropriately manage early and advanced stage sarcomatous pathology of the uterus and adequate assessment of its prognosis
- ♦ Revise the epidemiology of a uterine sarcoma
- ♦ Acquire up-to-date knowledge of the anatomopathologic characteristics of the different histologic types of uterine sarcoma
- ♦ Evaluate the role of tumor markers in sarcoma of the uterus
- ♦ Review the indications and surgical techniques, as well as radiotherapy and chemotherapy, for the treatment of early stage uterine leiomyosarcoma
- ♦ Study the prognostic factors in uterine leiomyosarcoma
- ♦ Revise the treatment and management of the early stages of endometrial stromal sarcoma

### **Module 12. Uterine Sarcoma II**

- ♦ Identify and classify the different anatomopathological forms of uterine sarcoma
- ♦ Identify the risk factors associated with the development of a uterine sarcoma
- ♦ Review the different clinical manifestations of uterine sarcomas and the use of magnetic resonance in the diagnosis procedures
- ♦ Classify the uterine sarcomas according to the international FIGO classification model
- ♦ Gain up-to-date knowledge on the management of recurrent or metastatic disease in uterine leiomyosarcoma
- ♦ Analyze the management of recurrent endometrial stromal sarcoma
- ♦ Study the treatment of a metastatic disease and the prognostic factors of an endometrial stromal sarcoma
- ♦ Review the treatment and management of the early stages of undifferentiated endometrial sarcoma

### **Module 13. Fertility Preservation**

- ♦ Determine the different fertility preservation techniques in young patients and their oncological implications
- ♦ Identify the options for preserving fertility in gynecologic cancer, as well as gamete preservation
- ♦ Revise the surgical techniques for preserving fertility in each of the cancers affecting the female genital tract
- ♦ Update on the management of pregnant patients with gynecologic cancer

- ♦ Review new options for preserving ovarian tissue
- ♦ Gain up-to-date knowledge on the current status of uterine transplantation and the most recent results obtained to date

### **Module 14. Uncommon Gynecologic Tumors**

- ♦ Identify the different types of less common genital tumors and the corresponding treatment and evolution
- ♦ Revise the clinical manifestations and diagnosis of vaginal cancer
- ♦ Review the different histological types and classify the different types of vaginal cancer
- ♦ Evaluate and create an appropriate diagnostic and management plan for vaginal cancer
- ♦ Establish the follow-up plan for vaginal cancer to be able to detect and recurrences
- ♦ Identify the prognosis for each type of vaginal cancer
- ♦ Review the epidemiology of gestational trophoblastic disease and the clinical features of hydatidiform mole
- ♦ Study the clinical characteristic of gestational trophoblastic neoplasia
- ♦ Appropriately evaluate the different forms of gestational trophoblastic disease with imaging techniques
- ♦ Gain up-to-date knowledge of the histologic shapes of molar and invasive forms
- ♦ Appropriately perform staging of placental invasive disease
- ♦ Study the different types of surgical treatment suitable for treating the different forms of molar disease in pregnancy

- ♦ Recognize and implement the most appropriate methods for follow-up treatment of molar disease in pregnancy
- ♦ Appropriately classify the prognosis of gestational trophoblastic disease
- ♦ Identify and assess the different tumors that can metastasize in the female genital tract
- ♦ Study the way to deal with metastasized cancers in the genital tract
- ♦ Analyze and treat neuroendocrine tumors in the female genital tract
- ♦ Review the way to deal with tumors of the rectovaginal septum, as well as symptomatology associated with gynecological tumors
- ♦ Evaluate the pain, the different types and the treatment of these types of tumors
- ♦ Assess the presence of ascites in the context of gynecologic tumors in an appropriate way
- ♦ Classify edema and manage it appropriately
- ♦ Identify deep vein thrombosis and evaluate the most appropriate anticoagulant treatment for each case

#### **Module 15. Palliative Care and Nutrition**

- ♦ Study and understand the basis of palliative care and terminal phase of an oncological illness
- ♦ Evaluate the usefulness of PET-CT for the assessment of metabolism in suspected malignant lesions
- ♦ Gain up-to-date knowledge of gastrointestinal symptomatology

- ♦ Identify the distant metastasis and assess how to manage it
- ♦ Describe the indications and the surgical technique specific to palliative pelvic exenteration
- ♦ Comprehensive care of a dying patient and learning how to help them in the final phase of the disease
- ♦ Study and treat patients with anxiety and depression in a specific way



*Enroll now and advance in your field of work with a comprehensive program that will allow you to put everything you have learned into practice”*

# 04 Skills

After passing the evaluations of the Hybrid Professional Master's Degree in Gynecologic Oncology, the medical professional will have acquired the professional skills necessary for quality medical care, and updated based on the latest scientific evidence.





“

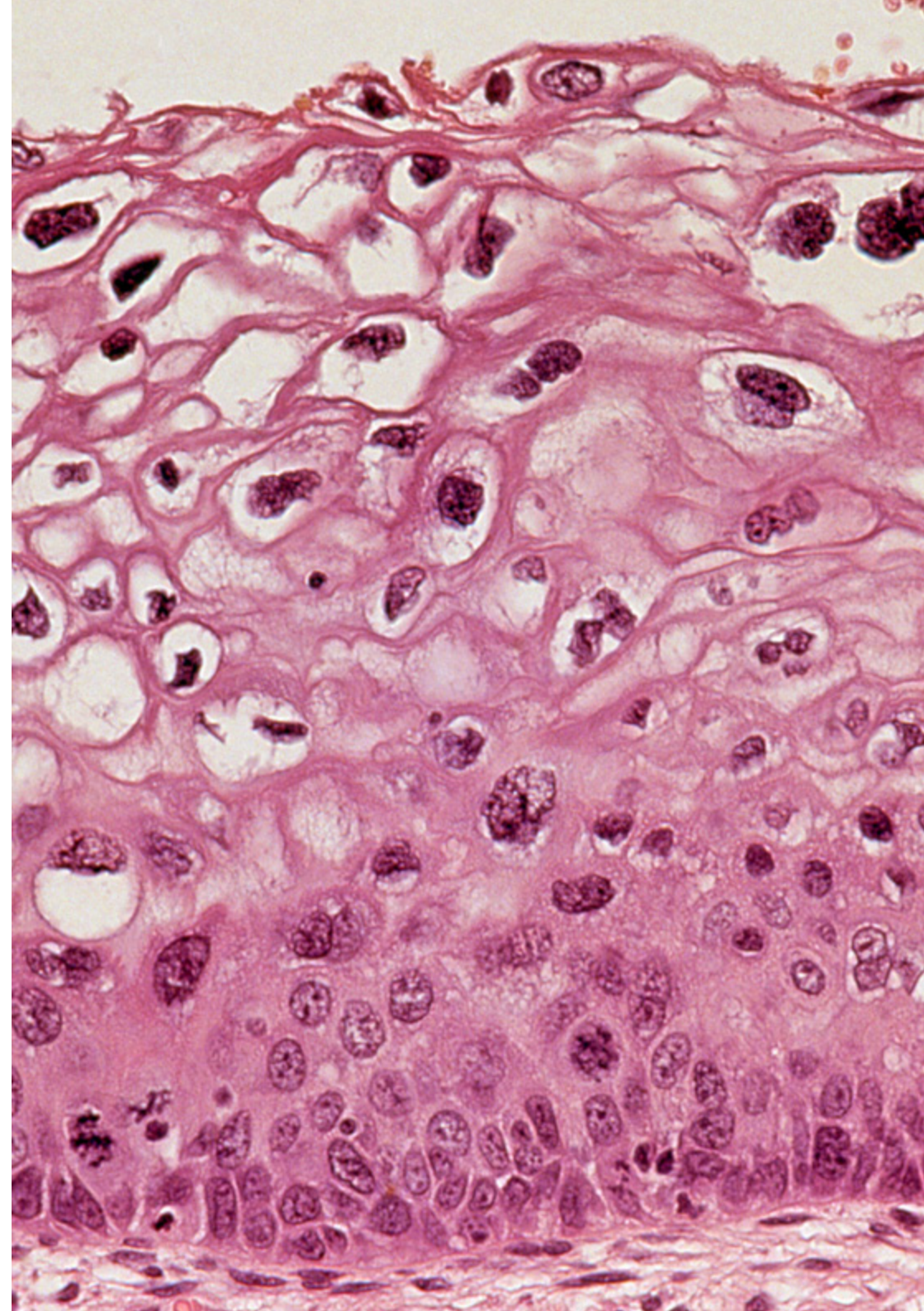
*Through this program you will be able to update your knowledge and be able to provide quality patient care based on the latest scientific evidence”*



## General Skills

---

- ♦ Possess and understand knowledge that provides a basis or opportunity to be original when developing and/or applying ideas, often in a research context
- ♦ Know how to apply the acquired knowledge and problem-solving skills in new or unfamiliar environments within broader (or multidisciplinary) contexts related to their area of study
- ♦ Integrate knowledge and deal with the complexity of making judgments based on incomplete or limited information, including reflections on the social and ethical responsibilities associated with the application of their knowledge and judgments
- ♦ Know how to communicate conclusions and the ultimate knowledge and reasons that support them to specialized and non-specialized audiences in a clear and unambiguous manner
- ♦ Acquire the learning skills that will enable to continue studying in a way that will be largely self-directed or autonomousDevelop within the profession in terms of working with other health professionals, acquiring skills to work as a team
- ♦ Recognize the need to maintain your professional skills and keep them up to date, with special emphasis on autonomous and continuous learning of new information
- ♦ Develop the capacity for critical analysis and research in the field of their profession







## Specific Skills

---

- ♦ Provide comprehensive care to the person to solve, individually or as members of a multidisciplinary team, the health problems affecting the patient and his or her immediate future
- ♦ Prioritizing situations and making decisions in the care of critically ill patients
- ♦ Plan and deliver medical care for critically ill patients, their families and caregivers, based on quality standards
- ♦ Establish effective communication with patients, families and groups served, as well as with the rest of the work team
- ♦ Through your work within a multidisciplinary team, contribute to the process of organ and tissue donation
- ♦ Safely and appropriately manage frequently used medications in the intensive care unit
- ♦ Use with rigor and safety the means of diagnostic support characterized by their complex technology
- ♦ Establish an effective therapeutic relationship with patients and their family members to be established. This will help them to cope more effectively with emergency situations
- ♦ Manage scientific databases for carrying out reviews and bibliographic searches of scientific studies
- ♦ Formulate, implement and evaluate standards, action guidelines and protocols specific to the practice of medicine in the intensive care unit
- ♦ Conduct a critical and in-depth study on a topic of scientific interest in the field of intensive care
- ♦ Communicate result findings after having analyzed, evaluated, and synthesized the data
- ♦ Manage healthcare resources with efficiency and quality criteria
- ♦ Work as part of a team providing expert knowledge in the field of Critical Care
- ♦ Educate users on health issues so that they acquire healthy lifestyles, in order to avoid situations that may compromise their health



*Boost your career path with holistic teaching, allowing you to advance both theoretically and practically”*

05

# Course Management

This program has renowned international directors and all its content is designed to focus on the most current clinical practice. Specialists will have access to privileged academic content, including a wide range of real examples and case studies analyzed to incorporate the most outstanding advances in Gynecologic Oncology into their daily practice. In addition, the program has recognized experts with multiple recognitions and accumulated clinical merits, which offers a valuable opportunity to be updated with new advances in the field.



“

*Get up to date with the latest advances in Gynecologic Oncology, drawing on the experience of leading experts in this area”*

## International Guest Director

Dr. Allan Covens is an international eminence in the field of **Gynecologic Oncology**. Throughout his distinguished professional career, the Postgraduate Diploma has investigated **germ cell tumors, Gestational Trophoblastic Disease, Cervical Cancer**, as well as radical and reconstructive surgical techniques. In particular, he is a reference for his medical innovations that, after different types of surgeries, aim at preserving the fertility of patients. Thanks to these contributions, he has accumulated more than 32 awards and grants.

In addition, this eminent specialist has performed **live interventions in several continents**, also taking his medical contributions to nearly 30 countries around the world through lectures. He is also the **author of more than 135 peer-reviewed publications** and has participated in 16 textbooks on Gynecologic Oncology. Another of his works is a DVD/book on **advanced laparoscopic techniques** in this field of women's health.

In turn, Dr. Covens has chaired the **Division of Gynecologic Oncology at the University of Toronto and Sunnybrook Health Sciences Centre**. At the latter institution, he directed his fellowship to train potential scientists for 13 years. He also serves on the board of the Global Curriculum Review Committee and coordinates the Rare Tumor Committee. He is also a member of MAGIC, a **multidisciplinary team developing protocols for malignant germ cell tumors**.



## Dr. Covens, Allan

---

- Director of the Division of Gynecologic Oncology at the University of Toronto.
- Advisor to Moi University, Eldoret, Kenya.
- Past President of the International Gynecologic Cancer Society (IGCS)
- Advisor to the Editorial Board of the journal Cancer
- Specialist in Obstetrics and Gynecology from the University of Western Ontario
- Medical Degree from the University of Toronto
- Research Fellowship in Gynecologic Oncology at the University of Toronto/McMaster's
- Degree in Gynecologic Oncology
- Member of: Rare Tumor Committee ,Gynecology, Cervical and Gestational Trophoblastic Committee of the NRG Postgraduate Certificate in Treatment and Management of Uterine Sarcoma



*Thanks to TECH you will be able to learn with the best professionals in the world"*

# 06

## Educational Plan

This innovative training model has been designed so that today's professionals can acquire theoretical knowledge at their own pace and without complications, and then test it in an on-site stage in one of the most prestigious clinical centers specialized in Gynecologic Oncology. For this reason, a curriculum has been established whose modules offer a broad perspective of the different types of cancer, their analysis, diagnoses, treatments and approaches from a global point of view for the sake of their application at an international level. In 15 study modules and an internship, students will expand their knowledge, which will allow them to stand out in their work environment.



“

*A unique program featuring the most cutting-edge curriculum in Gynecologic Oncology, which you will study alongside leading experts”*

### Module 1. Biological Basis of Cancer

- 1.1. Cell Growth Regulation
- 1.2. Carcinogenesis and Carcinogens
- 1.3. Genetics of Cancer
- 1.4. Mechanisms of Apoptosis and Programmed Cell Death
- 1.5. Molecular Mechanisms of Cancer Production and Metastasis
- 1.6. Origin of Genetic Alterations
- 1.7. Epigenetic Changes and Oncogenes
- 1.8. Angiogenesis

### Module 2. Basis of Chemotherapy Treatment, Adverse Effects and New Therapies

- 2.1. Introduction
- 2.2. Justification for the Use of Chemotherapy
- 2.3. Development of Cancer and the Influence of Chemotherapy
  - 2.3.1. Tumor Growth
  - 2.3.2. Cellular Cycle
  - 2.3.3. Specific Drugs for each of the Cellular Phases
- 2.4. Factors that Influence Treatment
  - 2.4.1. Tumor Characteristics
  - 2.4.2. Patient Tolerance
  - 2.4.3. Treatment Objectives
  - 2.4.4. Pharmacological Factors and Administration Routes
- 2.5. Principles of Resistance to Drugs
- 2.6. Combined Therapies
- 2.7. Treatment or Dosis Adjustments
- 2.8. Drug Toxicity
- 2.9. General Management of Secondary Effects and Complications of Chemotherapy

- 2.10. Antineoplastic Agents in Gynecology
  - 2.10.1. Alkylating Agents
  - 2.10.2. Antibiotics
  - 2.10.3. Anti-metabolites
  - 2.10.4. Plant Alkaloids
  - 2.10.5. Topoisomerase 1 Inhibitors
  - 2.10.6. Anti-Angiogenic Drugs
  - 2.10.7. PARP Inhibitors
  - 2.10.8. Tyrosine Kinase Inhibitors
  - 2.10.9. Other Drugs
- 2.11. Future Indications

### Module 3. Endometrial Cancer I

- 3.1. Epidemiology and Etiopathogenesis
- 3.2. Precancerous Lesions
- 3.3. Hereditary-Familial Carcinoma
- 3.4. Pathological Anatomy and Different Types of Tumors
- 3.5. Diagnostic Process
- 3.6. Imaging Tests, Tumor Markers and Possible Screening
- 3.7. Molecular Diagnostic Tests
- 3.8. FIGO Classification and Others

### Module 4. Endometrial Cancer II

- 4.1. Introduction
- 4.2. General Aspects of Surgical Treatment
- 4.3. Low Risk Tumors (Stage I, Grade 1)
- 4.4. High Risk Tumors (Grade 2-3, Serous or Clear Cells)
- 4.5. Laparotomy vs. Laparoscopy
- 4.6. Introduction of Robotic Surgery
- 4.7. Surgical Technique for High Risk Tumors



- 4.8. Adjuvant Treatment
  - 4.8.1. Observation without Additional Treatment
    - 4.8.1.1. Low Risk, Early Stage, Low Grade
  - 4.8.2. Adjuvant Radiotherapy
    - 4.8.2.1. Early Stage, Intermediate and High Risk
    - 4.8.2.2. Advanced Stages
  - 4.8.3. Adjuvant Chemotherapy
  - 4.8.4. Peculiarities of Serous Tumors and Clear Cells
- 4.9. Hormonal Treatment
- 4.10. Recurrent Endometrial Cancer
  - 4.10.1. Surgical Management
  - 4.10.2. Radiotherapy
  - 4.10.3. Chemotherapy
- 4.11. Follow-up Treatment of Endometrial Cancer
- 4.12. Prognosis

### Module 5. Cervical Cancer I

- 5.1. Epidemiology and Etiopathogenesis of the Disease
- 5.2. Precancerous Lesions and the Evolutionary Process
- 5.3. Risk Factors for Contracting the Disease
- 5.4. Notions about Cervical Pathology and HPV
- 5.5. Normal Colposcopy and Vulvoscopy
- 5.6. Abnormal Colposcopy and Vulvoscopy
- 5.7. Cervical Cancer Screening
- 5.8. Hereditary-Familial Carcinoma
- 5.9. Forms of Presentation in Anatomic Pathology
- 5.10. Diagnostic Process: Imaging Tests and Tumor Markers
- 5.11. Role of New Technologies such as PET-CT
- 5.12. FIGO and TNM Classification in Cervical Carcinoma

### Module 6. Cervical Cancer II

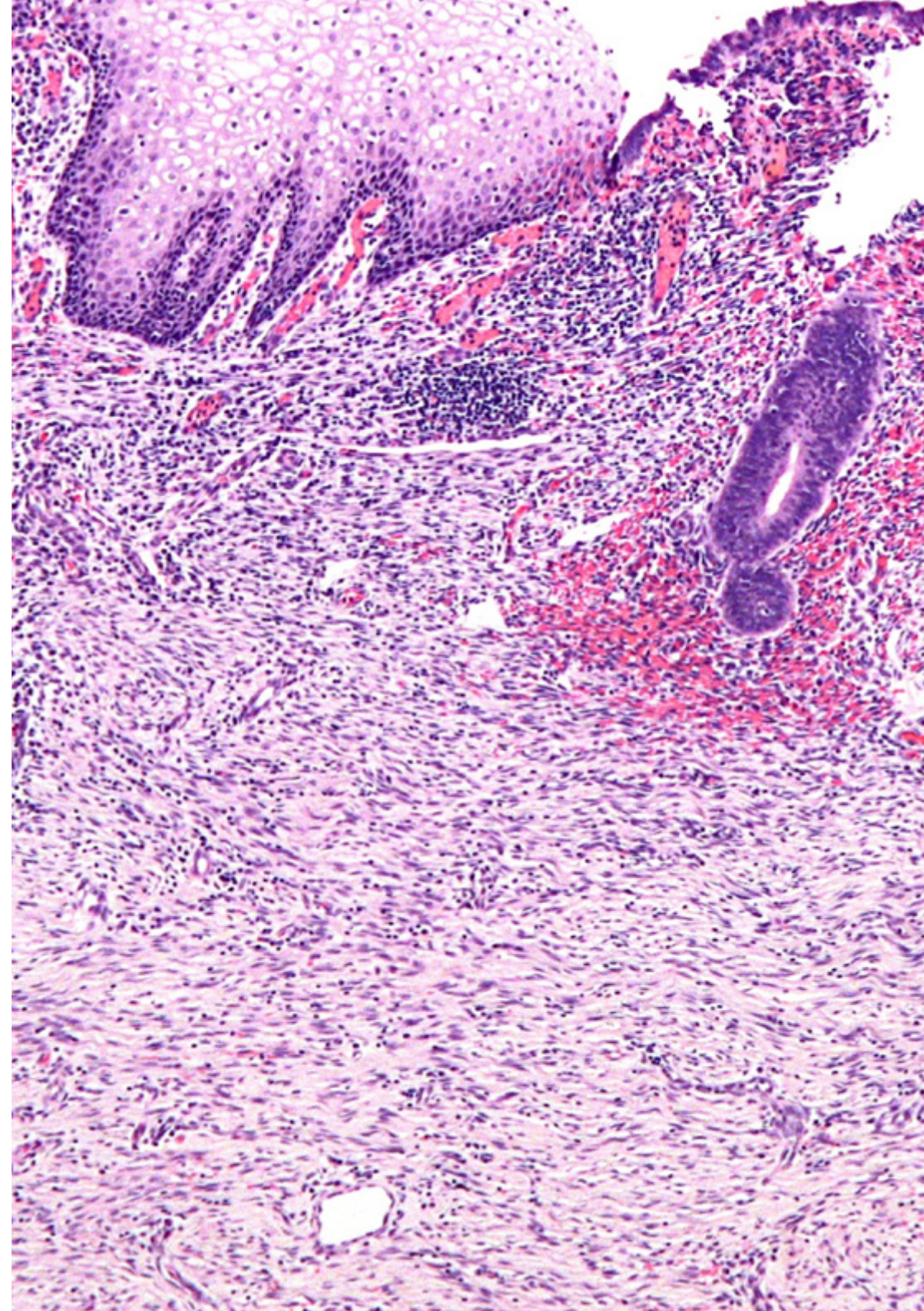
- 6.1. Treatment of Cervical Intraepithelial Neoplasia (CIN)
  - 6.1.1. CIN Surgery
  - 6.1.2. CIN Immunotherapy
- 6.2. Invasive Treatment of Cervical Cancer
  - 6.2.1. Radical Hysterectomy with Nerve Preservation
  - 6.2.2. Less Radical Hysterectomy
  - 6.2.3. Radical Endoscopic Hysterectomy
  - 6.2.4. Selective Sentinel Node Biopsy
  - 6.2.5. Para-aortic Advanced Stage Lymphadenectomy Staging
- 6.3. Radiotherapy and Chemotherapy
  - 6.3.1. Concurrent Chemoradiotherapy
  - 6.3.2. Enhanced Radiation Therapy Treatment Modalities
  - 6.3.3. Chemotherapy Modalities in Concurrent Treatment
  - 6.3.4. Preoperative Chemoradiotherapy
  - 6.3.5. Adjuvant Therapy after a Radical Hysterectomy
  - 6.3.6. Neoadjuvant Chemotherapy
  - 6.3.7. Adjuvant Therapy after Neoadjuvant and Previous Surgery
- 6.4. Treatment of Metastasis, Recurrent or Persistent Disease
  - 6.4.1. Surgical Management
  - 6.4.2. Chemotherapy
- 6.5. Management of Cervical Adenocarcinoma
  - 6.5.1. Adenocarcinoma in Situ (AIS)
  - 6.5.2. Comparison Between Squamous Cell Carcinomas and Adenocarcinomas
  - 6.5.3. Surgery vs. Radiotherapy in Invasive Adenocarcinoma
  - 6.5.4. Chemotherapy
- 6.6. Monitoring

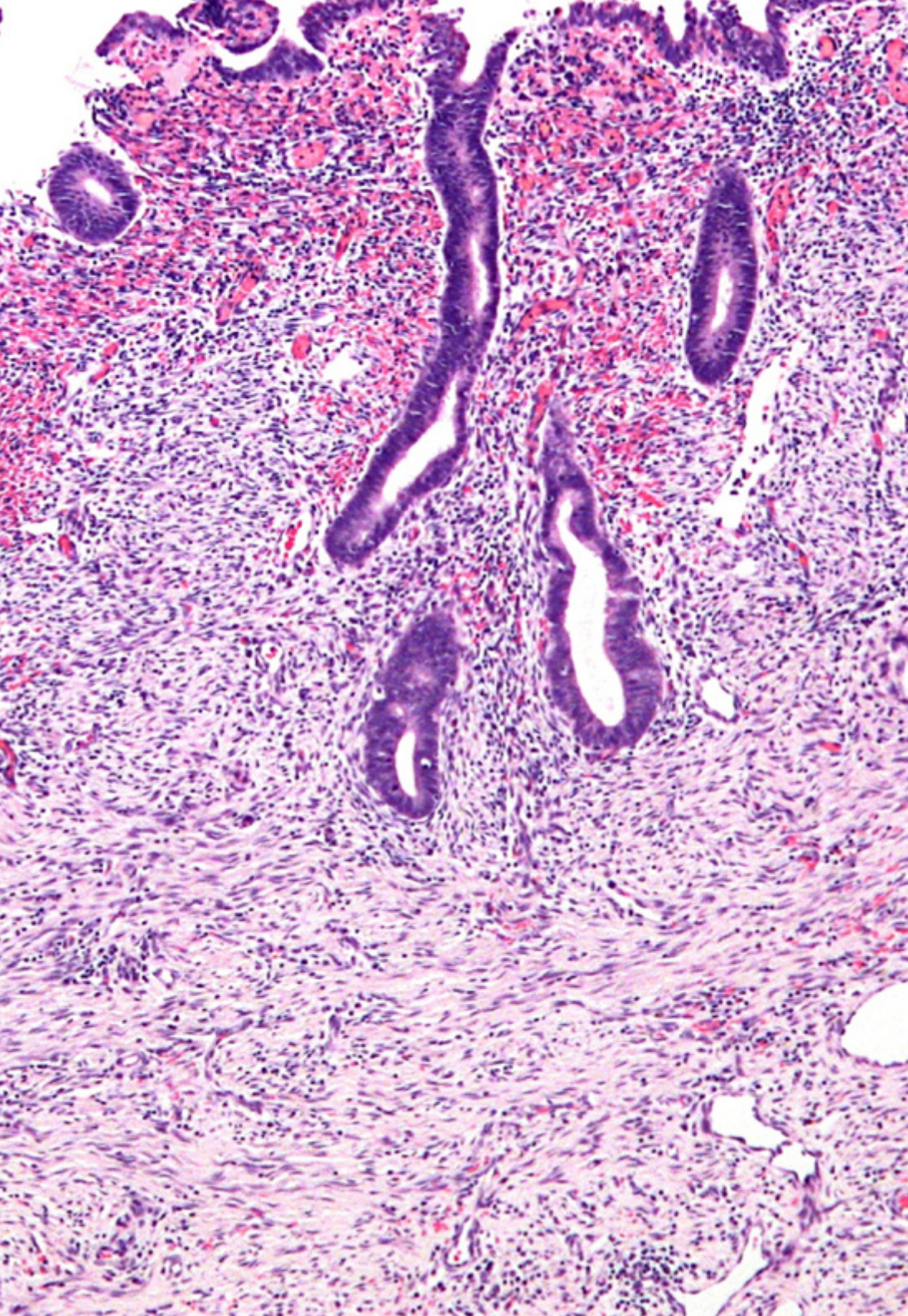
## Module 7. Ovarian Cancer I

- 7.1. Epidemiology of Ovarian and Fallopian Tube Cancer
- 7.2. Etiopathogenesis and tubal origin, new trends
- 7.3. Precancerous Lesions in the Fallopian Tubes
- 7.4. Ovarian Cancer Screening
- 7.5. Hereditary-Familial Carcinoma and How to Evaluate It
- 7.6. Histological Forms and Pathological Anatomy
- 7.7. Diagnostic Process
  - 7.7.1. Clinical Symptoms
  - 7.7.2. Ultrasound
  - 7.7.3. Computerized Tomography
  - 7.7.4. Magnetic Resonance
  - 7.7.5. Positron Emission Tomography
- 7.8. Serum Tumor Markers
  - 7.8.1. CA125
  - 7.8.2. HE4
  - 7.8.3. CA19.9.
  - 7.8.4. CEA
  - 7.8.5. Other Markers
- 7.9. FIGO Classification of the Disease

## Module 8. Ovarian Cancer II

- 8.1. General Surgical Treatment
- 8.2. Complete Cytoreduction and Primary Debulking
- 8.3. Neoadjuvant Treatment and When to Opt for It
- 8.4. Interval and Second Look Treatments
- 8.5. Adjuvant Therapy: Carboplatin-Taxol and Other Options
- 8.6. Radiotherapy: What Role Does it Play?
- 8.7. Hormonal Therapy Possibilities in Ovarian Cancer
- 8.8. Prognosis and Disease-Free Interval
- 8.9. Monitoring and Treatment of Relapses
- 8.10. Controversies in the Management of Ovarian Cancer
- 8.11. Peritoneal Carcinomas Hyperthermic Therapy
- 8.12. Intraperitoneal Chemotherapy, Indications and Results





### Module 9. Vulvar Cancer I

- 9.1. Epidemiology and Relationship with HPV
- 9.2. Etiopathogenesis and Precancerous Lesions
- 9.3. VIN I, II, III VAIN and Other Lesions
- 9.4. Vulvar Cancer Screening
- 9.5. Hereditary-Familial Carcinoma
- 9.6. Pathological Anatomy, Histological Types
- 9.7. Imaging Tests and Extension Study
- 9.8. Tumor Markers: SCC

### Module 10. Vulvar Cancer II

- 10.1. Introduction
- 10.2. Vulvar Paget's Disease
  - 10.2.1. General Aspects
  - 10.2.2. Paget's Disease Type 1
    - 10.2.2.1. Prevalence
    - 10.2.2.2. Clinical Characteristics
    - 10.2.2.3. Diagnosis
    - 10.2.2.4. Treatment
  - 10.2.3. Paget's Disease Type 2 and 3
- 10.3. Invasive Paget's Disease
  - 10.3.1. General Aspects
  - 10.3.2. Prognosis
- 10.4. Invasive Vulva Carcinoma
  - 10.4.1. Squamous Cell Carcinoma
  - 10.4.2. Clinical Characteristics
  - 10.4.3. Diagnosis
  - 10.4.4. Dissemination Pathways
  - 10.4.5. Staging

- 10.4.6. Treatment
  - 10.4.6.1. Primary Lesion Management
  - 10.4.6.2. Local Control after Primary Surgical Treatment
  - 10.4.6.3. Management of Ganglionic Chains
  - 10.4.6.4. Post-Operative Care
    - 10.4.6.4.1. Early postoperative complications
    - 10.4.6.4.2. Late Postoperative Complications
  - 10.4.6.5. Use of Sentinel Lymph Node
    - 10.4.6.5.1. Advanced Disease
    - 10.4.6.5.2. General Aspects
    - 10.4.6.5.3. Management of Ganglionic Chains
    - 10.4.6.5.4. Management of Primary Tumor
      - 10.4.6.5.4.1. Surgery
      - 10.4.6.5.4.2. Radiotherapy
      - 10.4.6.5.4.3. Chemotherapy
  - 10.4.6.6. Role of radiotherapy in vulvar cancer
- 10.4.7. Recurrent Vulvar Cancer
- 10.4.8. Prognosis
- 10.4.9. Monitoring
- 10.5. Vulva Melanoma
  - 10.5.1. Introduction
  - 10.5.2. Clinical Characteristics
  - 10.5.3. Pathologic Anatomy
  - 10.5.4. Staging
  - 10.5.5. Treatment
    - 10.5.5.1. Primary Lesion Management
    - 10.5.5.2. Management of Ganglionic Chains
  - 10.5.6. Prognosis
- 10.6. Carcinoma of Bartholin's Gland
  - 10.6.1. General Aspects
  - 10.6.2. Treatment
  - 10.6.3. Prognosis
- 10.7. Basal Cell Carcinoma
- 10.8. Verrucous Carcinoma

- 10.9. Vulva Sarcoma
  - 10.9.1. Introduction
  - 10.9.2. Leiomyosarcoma
  - 10.9.3. Epithelioid Sarcoma
  - 10.9.4. Rhabdomyosarcoma
  - 10.9.5. Merkel Cells Carcinoma

## Module 11. Uterine Sarcoma I

- 11.1. Introduction
- 11.2. Epidemiology
  - 11.2.1. Incidence
  - 11.2.2. Age
  - 11.2.3. Histological Distribution
  - 11.2.4. Racial Distribution
- 11.3. Risk Factors
  - 11.3.1. Heritage
  - 11.3.2. Hormone Therapy
  - 11.3.3. Radiation Exposure
- 11.4. Pathologic Anatomy
  - 11.4.1. Leiomyosarcoma
  - 11.4.2. STUMP
  - 11.4.3. Benign Metastasizing Leiomyoma
  - 11.4.4. Carcinosarcoma
  - 11.4.5. Endometrial Stromal Neoplasms
  - 11.4.6. Stromal Nodule
  - 11.4.7. Endometrial Stromal Sarcoma
  - 11.4.8. Mullerian Adenosarcoma
- 11.5. Clinical Manifestations
- 11.6. Imaging Tests
  - 11.6.1. Magnetic Resonance
  - 11.6.2. Tumor Markers
- 11.7. FIGO Staging
- 11.8. Conclusions

**Module 12. Uterine Sarcoma II**

- 12.1. Introduction
- 12.2. Uterine Leiomyosarcoma
  - 12.2.1. Early Stages
    - 12.2.1.1. Surgery
    - 12.2.1.2. Adjuvant Radiotherapy
    - 12.2.1.3. Chemotherapy
  - 12.2.2. Recurrent or Metastatic Disease
    - 12.2.2.1. Surgery
    - 12.2.2.2. Chemotherapy
    - 12.2.2.3. Hormone Therapy
  - 12.2.3. Prognostic Factors
- 12.3. Endometrial Stromal Sarcoma
  - 12.3.1. Early Stages
    - 12.3.1.1. Surgery
    - 12.3.1.2. Pelvic Radiotherapy
    - 12.3.1.3. Hormone Therapy
  - 12.3.2. Recurrent or Metastatic Disease
    - 12.3.2.1. Surgery
    - 12.3.2.2. Chemotherapy or Radiotherapy
  - 12.3.3. Prognostic Factors
- 12.4. Undifferentiated Endometrial Sarcoma
  - 12.4.1. Early Stages
    - 12.4.1.1. Surgery
    - 12.4.1.2. Adjuvant Radiotherapy
    - 12.4.1.3. Chemotherapy
  - 12.4.2. Recurrent or Metastatic Disease
    - 12.4.2.1. Surgery
    - 12.4.2.2. Chemotherapy or Radiotherapy
  - 12.4.3. Prognostic Factors
- 12.5. Conclusions

**Module 13. Fertility Preservation**

- 13.1. Indications of Fertility Preservation
- 13.2. Gametes Preservation
- 13.3. Role of Assisted Reproduction Techniques
- 13.4. Conservative Surgical Treatment
- 13.5. Oncological Prognosis after Fertility Conservation
- 13.6. Reproductive Results
- 13.7. Dealing with Pregnant Women with Gynecologic Cancer
- 13.8. New research paths and literature updates
- 13.9. Conservation of Ovarian Tissue
- 13.10. Uterine and Gonadal Tissue Transplantation

**Module 14. Uncommon Gynecologic Tumors**

- 14.1. Vagina Cancer
  - 14.1.1. Introduction
  - 14.1.2. Clinical Manifestations
  - 14.1.3. Diagnosis
  - 14.1.4. Pathologic Anatomy
    - 14.1.4.1. Squamous Carcinoma
    - 14.1.4.2. Adenocarcinoma
    - 14.1.4.3. Sarcoma
    - 14.1.4.4. Melanoma
  - 14.1.5. Tumor Staging
  - 14.1.6. Treatment of Disease
    - 14.1.6.1. Surgery
    - 14.1.6.2. Radiotherapy
    - 14.1.6.3. Treatment Complications
  - 14.1.7. Monitoring
  - 14.1.8. Prognosis

- 14.2. Gestational Trophoblastic Disease
  - 14.2.1. Introduction and Epidemiology
  - 14.2.2. Clinical Forms
    - 14.2.2.1. Hydatidiform Mole
      - 14.2.2.1.1. Complete Hydatidiform Mole
      - 14.2.2.1.2. Partial Hydatidiform Mole
    - 14.2.2.2. Gestational Trophoblastic Neoplasm
      - 14.2.2.2.1. After Molar Pregnancy
        - 14.2.2.2.1.1. Persistent Gestational Trophoblastic Neoplasm
      - 14.2.2.2.2. After Non-Molar Pregnancy
        - 14.2.2.2.2.1. Choriocarcinoma
        - 14.2.2.2.2.2. Placental Site Trophoblastic Tumor
  - 14.2.3. Diagnosis
    - 14.2.3.1. Human Chorionic Gonadotropin
    - 14.2.3.2. Ultrasound Study
      - 14.2.3.2.1. Complete Mole
      - 14.2.3.2.2. Partial Mole
      - 14.2.3.2.3. Invasive Mole
      - 14.2.3.2.4. Choriocarcinoma and Placental Site Tumor
    - 14.2.3.3. Other Imaging Techniques
  - 14.2.4. Pathologic Anatomy
    - 14.2.4.1. Hydatidiform Mole
      - 14.2.4.1.1. Complete Mole
      - 14.2.4.1.2. Partial Mole
    - 14.2.4.2. Invasive Mole
    - 14.2.4.3. Choriocarcinoma
    - 14.2.4.4. Placental Site Trophoblastic Tumor
    - 14.2.4.5. Epithelioid Trophoblastic Tumor
  - 14.2.5. Staging
  - 14.2.6. Treatment
    - 14.2.6.1. Chemotherapy
      - 14.2.6.1.1. Low Risk Disease
      - 14.2.6.1.2. High Risk Disease and Metastasis
      - 14.2.6.1.3. Chemoresistant Disease
    - 14.2.6.2. Surgery
      - 14.2.6.2.1. Molar Evacuation
      - 14.2.6.2.2. Hysterectomy
      - 14.2.6.2.3. Myometrial Resection
      - 14.2.6.2.4. Pulmonary Resection
      - 14.2.6.2.5. Craniotomy
      - 14.2.6.2.6. Other Surgical Procedures
      - 14.2.6.2.7. Selective Arterial Embolization
  - 14.2.7. Post-Treatment Monitoring
    - 14.2.7.1. Monitoring after Molar Evacuation
    - 14.2.7.2. Monitoring after Gestational Neoplasm Treatment
  - 14.2.8. Prognosis
- 14.3. Metastatic Tumor in the Genital Tract
  - 14.3.1. Introduction
  - 14.3.2. Clinical Manifestations
    - 14.3.2.1. Secondary Tumors in the Uterine Body or Cervix
      - 14.3.2.2.1. From Genital or Pelvic Organs
      - 14.3.2.2.2. From Extragenital or Pelvic Organs
    - 14.3.2.2. Secondary Tumors in the Vagina
    - 14.3.2.3. Secondary Tumors on the Vulva
    - 14.3.2.4. Secondary Tumors in the Ovaries

- 14.3.3. Diagnosis
- 14.3.4. Pathologic Anatomy
  - 14.3.4.1. Gastrointestinal Tumors
    - 14.3.4.1.1. Metastasis of Intestinal Cancer
    - 14.3.4.1.2. Krukenberg Tumor
  - 14.3.4.2. Ovarian Lymphoma
- 14.3.5. Treatment and Prognosis
- 14.4. Neuroendocrine Tumors
  - 14.4.1. Introduction
  - 14.4.2. Pathologic Anatomy
    - 14.4.2.1. Well-Differentiated Tumors
    - 14.4.2.2. Poorly-Differentiated Tumors
  - 14.4.3. Clinical Manifestations and Diagnosis
    - 14.4.3.1. Small Cell Tumor in the Vulva and Vagina
    - 14.4.3.2. Small Cell Tumor in the Uterus
    - 14.4.3.3. Neuroendocrine Tumors in the Cervix
      - 14.4.3.3.1. Small Cell Neuroendocrine Carcinoma
      - 14.4.3.3.2. Carcinoma neuroendocrino células grandes
    - 14.4.3.4. Ovarian, Fallopian Tube and Wide Ligament Tumor
      - 14.4.3.4.1. Ovarian Carcinoid
        - 14.4.3.4.1.1. Insular Carcinoid
        - 14.4.3.4.1.2. Trabecular Carcinoid
        - 14.4.3.4.1.3. Mucinous Carcinoid
        - 14.4.3.4.1.4. Strumal Carcinoid
      - 14.4.3.4.2. Small Cell Lung Type
      - 14.4.3.4.3. Undifferentiated Non-Small Cell Carcinoma
  - 14.4.4. Treatment
  - 14.4.5. Monitoring
  - 14.4.6. Prognosis
- 14.5. Tumors of the Recto-Vaginal Septum

## Module 15. Palliative Care and Nutrition

- 15.1. Introduction
  - 15.1.1. Symptomology Associated with Gynecologic Tumors
- 15.2. Pain
- 15.3. Gastrointestinal Symptoms
  - 15.3.1. Diarrhea
  - 15.3.2. Constipation
  - 15.3.3. Malignant Intestinal Obstruction
    - 15.3.3.1. Conservative Treatment
    - 15.3.3.2. Surgical Management
- 15.4. Ascites
- 15.5. Respiratory symptoms
  - 15.5.1. Pleural Effusion
- 15.6. Edema
- 15.7. Anorexia and Weight Loss
- 15.8. Deep Vein Thrombosis
- 15.9. Pelvic Disease Progression
  - 15.9.1. Vaginal Bleeding
  - 15.9.2. Fistulas
- 15.10. Palliative Pelvic Exenteration
- 15.11. Metastasis of Other Organs
  - 15.11.1. Liver
  - 15.11.2. Brain
  - 15.11.3. Bone
    - 15.11.3.1. Hypercalcemia
- 15.12. Anxiety and Depression
- 15.13. Dying Patient Care

07

# Clinical Internship

After passing the online theoretical training period, the program includes a period of Internship Program in a reference clinical center. The student will have at their disposal the support of a tutor who will accompany them during the whole process, both in the preparation and in the development of the clinical practice.







“

*Do your clinical internship in one of the best hospital centers, surrounded by specialists with extensive careers and experience”*

The Internship Program of this program consists of a practical stay in a prestigious clinical center, lasting 3 weeks, from Monday to Friday with 8 consecutive hours of practical training with an attending specialist. This stay will allow you to see real patients alongside a team of professionals of reference in the area of Gynecologic Oncology, applying the most innovative diagnostic procedures and planning the latest generation therapeutics for in each pathology.

In this completely practical Internship Program, the activities are aimed at developing and perfecting the skills necessary to provide healthcare care in areas and conditions that require highly qualified professionals, and are oriented towards specific expertise for practicing the activity, in a safe environment for the patient and with highly professional performance.

It is undoubtedly an opportunity to learn by working in the innovative hospital of the future where real-time health monitoring of patients is at the heart of the digital culture of its professionals. This is a new way of understanding and integrating health processes, making it the ideal teaching scenario for this innovative experience in the improvement of professional medical competencies for the 21st century.

The practical teaching will be carried out with the active participation of the student performing the activities and procedures of each area of competence (learning to learn and learning to do), with the accompaniment and guidance of the professors and other fellow trainees that facilitate teamwork and multidisciplinary integration as transversal competencies for medicine Analysis Clinical Analysis Care Medicine(learning to be and learning to relate).





The procedures described below will form the basis of the practical part of the training, and their completion is subject to the suitability of the patients and the availability of the center and its workload, with the proposed activities being as follows:

Module	Practical Activity
<b>Diagnostic Gynecologic Oncology</b>	Perform colposcopy, hysteroscopy, cystoscopy, rectoscopy, colonoscopy or tissue biopsy as appropriate
	Interpret the results obtained from diagnostic tests
	Evaluate the use of complementary tests when necessary
	Assess the nutritional status of the patient and possible complications of parental nutrition
<b>Surgical procedures in the Gynecologic Oncology Unit</b>	Proceed with the pre-surgical preparation of the patient, determining the possible position of the ostoma and indication of antibiotics and anticoagulant therapy
	Inform the patient and family in an appropriate manner, indicating possible antibiotics and anticoagulants
	Involvement in surgical procedures such as hysterectomies, radical ovarian cytotoreduction, vaginectomy, vulvectomy, etc
	Manage the main postoperative complications and perform an adequate follow-up of the patient
<b>Chemotherapy treatments and other therapies</b>	Use the most up-to-date pharmacology in chemotherapy processes
	Management of antineoplastic toxicity in the patient
	Analyze the genetic mechanisms involved in cancer in order to establish a solid working basis
	Evaluate the use of antineoplastic agents
<b>Endometrial, cervical, ovarian and vulvar cancer</b>	Classify and screen the different types of cancer that may present in the Gynecologic Oncology practice
	Use molecular diagnostic techniques, tumor markers and imaging to identify the type of cancer
	Addressing precancerous lesions through surgery and immunotherapy
	Use of hormone therapy in cases of endometrial cancer
	Use laparotomy or minimally invasive surgery as required for surgical treatment

## Civil Liability Insurance

This institution's main concern is to guarantee the safety of the trainees and other collaborating agents involved in the internship process at the company. Among the measures dedicated to achieve this is the response to any incident that may occur during the entire teaching-learning process.

To this end, this entity commits to purchasing a civil liability insurance policy to cover any eventuality that may arise during the course of the internship at the center.

This liability policy for trainees will have broad coverage and will be taken out prior to the start of the practical training period. That way professionals will not have to worry in case of having to face an unexpected situation and will be covered until the end of the internship program at the center.



## General Conditions of the Internship Program

The general terms and conditions of the internship program agreement shall be as follows:

**1. TUTOR:** During the Hybrid Professional Master's Degree, students will be assigned with two tutors who will accompany them throughout the process, answering any doubts and questions that may arise. On the one hand, there will be a professional tutor belonging to the internship center who will have the purpose of guiding and supporting the student at all times. On the other hand, they will also be assigned with an academic tutor whose mission will be to coordinate and help the students during the whole process, solving doubts and facilitating everything they may need. In this way, the student will be accompanied and will be able to discuss any doubts that may arise, both clinical and academic.

**2. DURATION:** The internship program will have a duration of three continuous weeks, in 8-hour days, 5 days a week. The days of attendance and the schedule will be the responsibility of the center and the professional will be informed well in advance so that they can make the appropriate arrangements.

**3. ABSENCE:** If the students does not show up on the start date of the Hybrid Professional Master's Degree, they will lose the right to it, without the possibility of reimbursement or change of dates. Absence for more than two days from the internship, without justification or a medical reason, will result in the professional's withdrawal from the internship, therefore, automatic termination of the internship. Any problems that may arise during the course of the internship must be urgently reported to the academic tutor.

**4. CERTIFICATION:** Professionals who pass the Hybrid Professional Master's Degree will receive a certificate accrediting their stay at the center.

**5. EMPLOYMENT RELATIONSHIP:** the Hybrid Professional Master's Degree shall not constitute an employment relationship of any kind.

**6. PRIOR EDUCATION:** Some centers may require a certificate of prior education for the Hybrid Professional Master's Degree. In these cases, it will be necessary to submit it to the TECH internship department so that the assignment of the chosen center can be confirmed.

**7. DOES NOT INCLUDE:** The Hybrid Professional Master's Degree will not include any element not described in the present conditions. Therefore, it does not include accommodation, transportation to the city where the internship takes place, visas or any other items not listed.

However, students may consult with their academic tutor for any questions or recommendations in this regard. The academic tutor will provide the student with all the necessary information to facilitate the procedures in any case.

08

# Where Can I Do the Clinical Internship?

To ensure that the updating process is the best possible, TECH proposes the realization of this on-site stay in a prestigious center that can provide the doctor with the latest advances in the field of Gynecologic Oncology. This is a very complex and broad field, so it requires updating by the specialist, and the role of the hospital institutions proposed here is vital in this process, since they will offer the most advanced knowledge in the specialty.



“

*You will obtain the most advanced knowledge  
in the field of Gynecologic Oncology”*



The student will be able to take the practical part of this Hybrid Professional Master's Degree in the following centers:



Medicine

### Hospital Recoletas Campo Grande

Country	City
Spain	Valladolid

Address: Pl. de Colón, s/n, 47007 Valladolid

Clinical center specialized in multidisciplinary healthcare

**Related internship programs:**

- Intensive Care Nursing
- Gynecologic Oncology



Medicine

### Hospital HM Vallés

Country	City
Spain	Madrid

Address: Calle Santiago, 14, 28801, Alcalá de Henares, Madrid

Network of private clinics, hospitals and specialized centers distributed throughout Spain.

**Related internship programs:**

- Gynecologic Oncology
- Clinical Ophthalmology



Medicine

### HM CIOCC - Centro Integral Oncológico Clara Campal

Country	City
Spain	Madrid

Address: Calle de Oña, 10, 28050, Madrid

Network of private clinics, hospitals and specialized centers distributed throughout Spain.

**Related internship programs:**

- Gynecologic Oncology
- Clinical Ophthalmology



Medicine

### HM CIOCC Barcelona

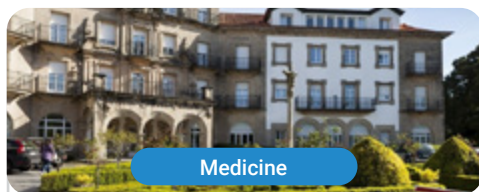
Country	City
Spain	Barcelona

Address: Avenida de Vallcarca, 151, 08023, Barcelona

Network of private clinics, hospitals and specialized centers distributed Spanish democracy

**Related internship programs:**

- Advances in Hematology and Hemotherapy
- Oncology Nursing



Medicine

### HM CIOCC Galicia

Country	City
Spain	La Coruña

Address: Avenida das Burgas, 2, 15705, Santiago de Compostela

Network of private clinics, hospitals and specialized centers distributed throughout Spain.

**Related internship programs:**

- Gynecologic Oncology
- Clinical Ophthalmology



Medicine

### Centro Médico Vithas Alzira

Country	City
Spain	Valence

Address: Gran Via Comunitat Valenciana, 4, 46600 Alzira

Leading group in the Spanish healthcare sector

**Related internship programs:**

- Update in Anesthesiology and Resuscitation
- Intensive Care Nursing



Medicine

### Centro Médico Vithas Castellón

Country	City
Spain	Castellón

Address: Calle Santa Maria Rosa Molas, 40, 12004 Castellón de la Plana

Leading group in the Spanish healthcare sector

**Related internship programs:**

- Update in Anesthesiology and Resuscitation
- Intensive Care Nursing



Medicine

### Centro Médico Vithas El Ejido

Country	City
Spain	Almería

Address: Avenida Ciavieja, 15, 04700 El Ejido

Leading group in the Spanish healthcare sector

**Related internship programs:**

- Update in Anesthesiology and Resuscitation
- Implantology and Oral Surgery





Medicine

### Centro Médico Vithas Fuengirola

Country: Spain City: Malaga

Address: Avenida de Ramón y Cajal, s/n, 29640 Fuengirola

Leading group in the Spanish healthcare sector

**Related internship programs:**

Update in Anesthesiology and Resuscitation  
- Intensive Care Nursing



Medicine

### Centro Médico Vithas Granada

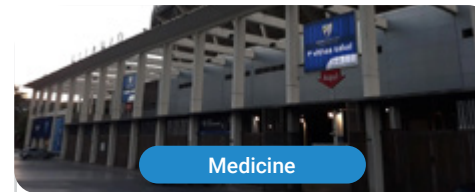
Country: Spain City: Granada

Address: Plaza Ciudad de los Cármenes, Bajo B, s/n, 18013 Granada

Leading group in the Spanish healthcare sector

**Related internship programs:**

Update in Anesthesiology and Resuscitation  
- Intensive Care Nursing



Medicine

### Centro Médico Vithas La Rosaleda

Country: Spain City: Malaga

Address: Paseo Martiricos, Estadio de Fútbol La Rosaleda s/n, 29011 Málaga

Leading group in the Spanish healthcare sector

**Related internship programs:**

Update in Anesthesiology and Resuscitation  
- Intensive Care Nursing



Medicine

### Centro Médico Vithas Limonar

Country: Spain City: Malaga

Address: Calle la Era, 6, 29016 Málaga

Leading group in the Spanish healthcare sector

**Related internship programs:**

Update in Anesthesiology and Resuscitation  
- Intensive Care Nursing



Medicine

### Centro Médico Vithas Lleida

Country: Spain City: Lérida

Address: Avenida de Tortosa 4, 25005 Lleida

Leading group in the Spanish healthcare sector

**Related internship programs:**

Update in Anesthesiology and Resuscitation  
- Intensive Care Nursing



Medicine

### Centro Médico Vithas Nerja

Country: Spain City: Malaga

Address: Calle Antonio Ferrandis, 'Edificio Chanquete', 5, 29780 Málaga

Leading group in the Spanish healthcare sector

**Related internship programs:**

Update in Anesthesiology and Resuscitation  
- Intensive Care Nursing



Medicine

### Centro Médico Vithas Playa Serena

Country: Spain City: Almería

Address: Avenida de Playa Serena, 40, 04740 Roquetas de Mar

Leading group in the Spanish healthcare sector

**Related internship programs:**

Update in Anesthesiology and Resuscitation  
- Intensive Care Nursing



Medicine

### Centro Médico Vithas Pontevedra

Country: Spain City: Pontevedra

Address: Avenida Eduardo Pondal, 68, 36003 Pontevedra

Leading group in the Spanish healthcare sector

**Related internship programs:**

Update in Anesthesiology and Resuscitation  
- Intensive Care Nursing



Medicine

### Centro Médico Vithas Rincón de la Victoria

Country: Spain  
City: Malaga

Address: Avenida de la Torre, 15, 29730 Rincón de la Victoria

Leading group in the Spanish healthcare sector

**Related internship programs:**

Update in Anesthesiology and Resuscitation  
- Intensive Care Nursing



Medicine

### Centro Médico Vithas Sevilla

Country: Spain  
City: Seville

Address: Calle Enramadilla, 8, 41018 Sevilla

Leading group in the Spanish healthcare sector

**Related internship programs:**

Update in Anesthesiology and Resuscitation  
- Intensive Care Nursing



Medicine

### Centro Médico Vithas Torre del Mar

Country: Spain  
City: Malaga

Address: Calle San Andrés, 23, 29740 Torre del Mar

Leading group in the Spanish healthcare sector

**Related internship programs:**

Update in Anesthesiology and Resuscitation  
- Intensive Care Nursing



Medicine

### Centro Médico Vithas Torremolinos

Country: Spain  
City: Malaga

Address: Calle Hoyo, 15, 29620 Torremolinos

Leading group in the Spanish healthcare sector

**Related internship programs:**

Update in Anesthesiology and Resuscitation  
- Intensive Care Nursing





Medicine

### Centro Médico Vithas Vitoria

Country: Spain  
City: Álava

Address: Avenida Beato Tomás de Zumárraga, 1, 01008 Vitoria

Leading group in the Spanish healthcare sector

**Related internship programs:**

Update in Anesthesiology and Resuscitation  
- Intensive Care Nursing



Medicine

### Centro Médico Vithas Madrid Aravaca

Country: Spain  
City: Madrid

Address: Calle La Salle, 12, 28023 Madrid

Leading group in the Spanish healthcare sector

**Related internship programs:**

Update in Anesthesiology and Resuscitation  
- Intensive Care Nursing



Medicine

### Hospital Universitario Vithas Madrid Arturo Soria

Country: Spain  
City: Madrid

Address: C. de Arturo Soria, 103, 28043 Madrid

Leading group in the Spanish healthcare sector

**Related internship programs:**

Update in Anesthesiology and Resuscitation  
- Intensive Care Nursing



Medicine

### Hospital Universitario Vithas La Milagrosa

Country: Spain  
City: Madrid

Address: Calle Modesto Lafuente, 14, 28010 Madrid

Leading group in the Spanish healthcare sector

**Related internship programs:**

Update in Anesthesiology and Resuscitation  
- Intensive Care Nursing



Medicine

### Hospital Vithas Aguas Vivas

Country	City
Spain	Valence

Address: Carretera Alzira-Tavernes de Valldigna, CV-50 Km 11, 46740 Carcaixent

Leading group in the Spanish healthcare sector

**Related internship programs:**

- Update in Anesthesiology and Resuscitation
- Intensive Care Nursing



Medicine

### Hospital Vithas Alicante

Country	City
Spain	Alicante

Address: Plaza Dr. Gómez Ulla, 15, 03013 Alicante

Leading group in the Spanish healthcare sector

**Related internship programs:**

- Endodontics and Apical Microsurgery
- Implantology Oral Surgery



Medicine

### Hospital Vithas Almería

Country	City
Spain	Almería

Address: Carretera del Mami, Km 1, 04120 Almería

Leading group in the Spanish healthcare sector

**Related internship programs:**

- Intensive Care Nursing
- Update in Anesthesiology and Resuscitation



Medicine

### Hospital Vithas Castellón

Country	City
Spain	Castellón

Address: Calle Santa María Rosa Molas, 25, 12004 Castellón de la Plana

Leading group in the Spanish healthcare sector

**Related internship programs:**

- Intensive Care Nursing
- Endodontics and Apical Microsurgery



Medicine

### Hospital Vithas Granada

Country	City
Spain	Granada

Address: Avenida de Santa María de la Alhambra, 6, 18008 Granada

Leading group in the Spanish healthcare sector

**Related internship programs:**

- Update in Anesthesiology and Resuscitation
- Intensive Care Nursing



Medicine

### Hospital Vithas Las Palmas

Country	City
Spain	Las Palmas

Address: Calle León y Castillo, 292, 35005 Las Palmas de Gran Canaria

Leading group in the Spanish healthcare sector

**Related internship programs:**

- Update in Anesthesiology and Resuscitation
- Intensive Care Nursing



Medicine

### Hospital Vithas Lleida

Country	City
Spain	Lérida

Address: Calle Bisbe Torres, 13, 25002 Lleida

Leading group in the Spanish healthcare sector

**Related internship programs:**

- Update in Anesthesiology and Resuscitation
- Intensive Care Nursing



Medicine

### Hospital Vithas Málaga

Country	City
Spain	Malaga

Address: Avenida Pintor Sorolla, 2, 29016 Málaga

Leading group in the Spanish healthcare sector

**Related internship programs:**

- Update in Anesthesiology and Resuscitation
- Intensive Care Nursing



Medicine

### Hospital Vithas Medimar

Country: Spain City: Alicante

Address: Avenida de Dénia, 78, 03016 Alicante

Leading group in the Spanish healthcare sector

**Related internship programs:**

- Gynecologic Oncology
- Intensive Care Nursing



Medicine

### Hospital Vithas Sevilla

Country: Spain City: Seville

Address: Avenida Plácido Fernández Viagas, s/n, 41950 Castilleja de la Cuesta

Leading group in the Spanish healthcare sector

**Related internship programs:**

- Update in Anesthesiology and Resuscitation
- Intensive Care Nursing



Medicine

### Hospital Vithas Tenerife

Country: Spain City: Santa Cruz de Tenerife

Address: Calle Enrique Wolfson, 8, 38006 Santa Cruz de Tenerife

Leading group in the Spanish healthcare sector

**Related internship programs:**

- Update in Anesthesiology and Resuscitation
- Esthetic Nursing



Medicine

### Hospital Vithas Valencia 9 de Octubre

Country: Spain City: Valence

Address: Calle Valle de la Balletera, 59, 46015 Valencia

Leading group in the Spanish healthcare sector

**Related internship programs:**

- Update in Anesthesiology and Resuscitation
- Intensive Care Nursing



Medicine

### Hospital Vithas Valencia Consuelo

Country: Spain City: Valence

Address: Calle Callosa d'En Sarrià, 12, 46007 Valencia

Leading group in the Spanish healthcare sector

**Related internship programs:**

- Update in Anesthesiology and Resuscitation
- Intensive Care Nursing



Medicine

### Hospital Vithas Vigo

Country: Spain City: Pontevedra

Address: Via Norte, 48, 36206 Vigo

Leading group in the Spanish healthcare sector

**Related internship programs:**

- Update in Anesthesiology and Resuscitation
- Intensive Care Nursing



Medicine

### Hospital Vithas Vitoria

Country: Spain City: Álava

Address: Calle Beato Tomás de Zumárraga, 10, 01008 Vitoria-Gasteiz

Leading group in the Spanish healthcare sector

**Related internship programs:**

- Endodontics and Apical Microsurgery
- Implantology Oral Surgery



Medicine

### Hospital Vithas Xanit Internacional

Country: Spain City: Malaga

Address: Avenida de los Argonautas, s/n, 29631 Benalmádena

Leading group in the Spanish healthcare sector

**Related internship programs:**

- Update in Anesthesiology and Resuscitation
- Intensive Care Nursing



Medicine

### Instituto Oftalmológico Vithas EuroCanarias

Country: Spain  
City: Las Palmas

Address: Calle León y Castillo, 211, 35005 Las Palmas de Gran Canaria

Leading group in the Spanish healthcare sector

**Related internship programs:**

- Intensive Care Nursing
- Update in Anesthesiology and Resuscitation



Medicine

### Vithas Centro Médico

Country: Spain  
City: Lérida

Address: Calle de les Astes de Sant Macari, 3, 25300 Tàrraga

Leading group in the Spanish healthcare sector

**Related internship programs:**

- Update in Anesthesiology and Resuscitation
- Intensive Care Nursing



Medicine

### Vithas Internacional

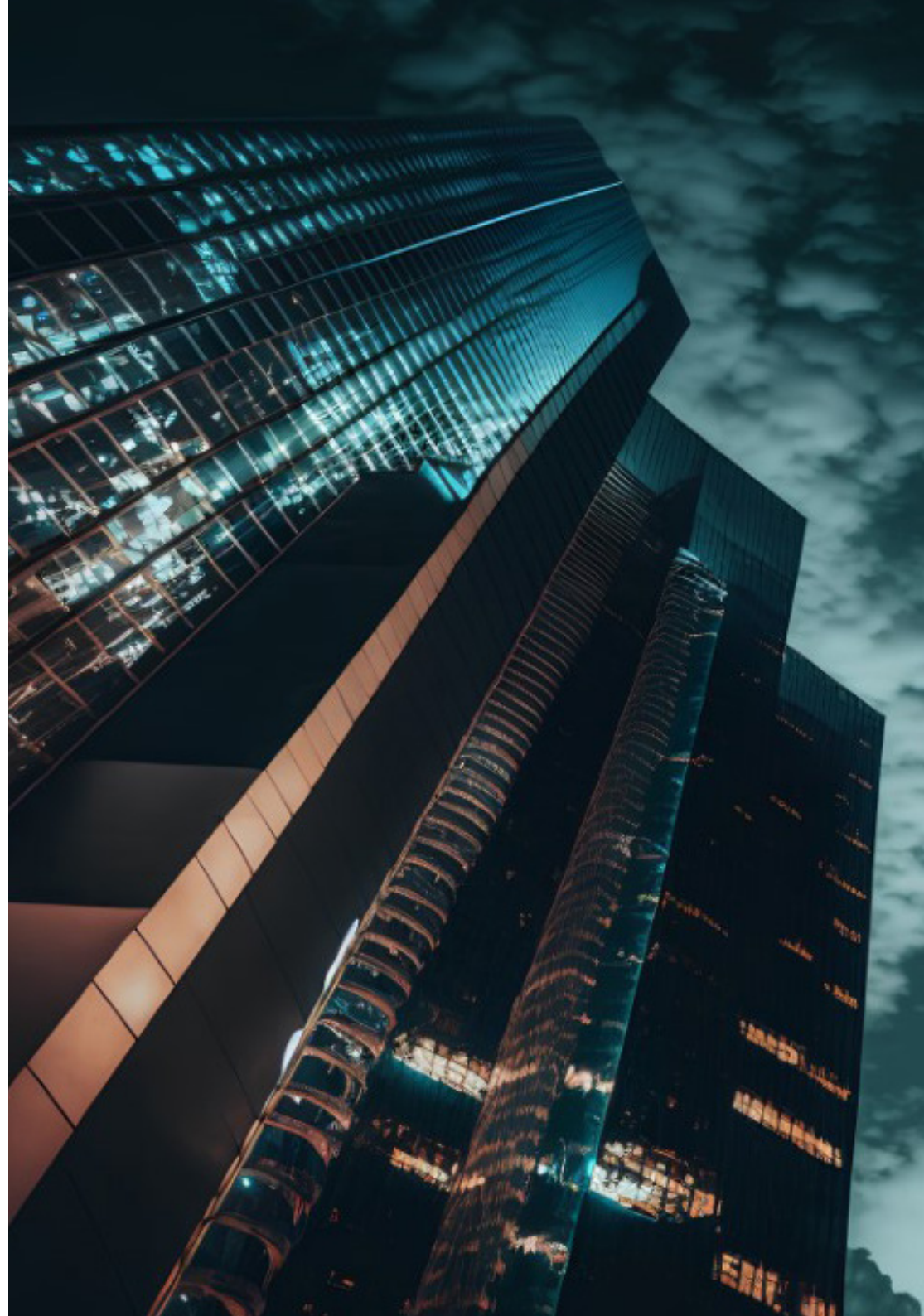
Country: Spain  
City: Madrid

Address: Calle Arturo Soria, 107, 28043 Madrid

Leading group in the Spanish healthcare sector

**Related internship programs:**

- Update in Anesthesiology and Resuscitation
- Intensive Care Nursing





Medicine

### Grupo Gamma

Country  
Argentina

City  
Santa Fe

Address: Entre Ríos 330, Rosario, Santa Fe

Polyclinic specialized in various medical specialties

---

**Related internship programs:**

Update in Anesthesiology and Resuscitation  
- Gynecologic Oncology



*You will obtain the most advanced knowledge in the field of Gynecologic Oncology"*

09

# Methodology

This academic program offers students a different way of learning. Our methodology uses a cyclical learning approach: **Relearning**.

This teaching system is used, for example, in the most prestigious medical schools in the world, and major publications such as the **New England Journal of Medicine** have considered it to be one of the most effective.





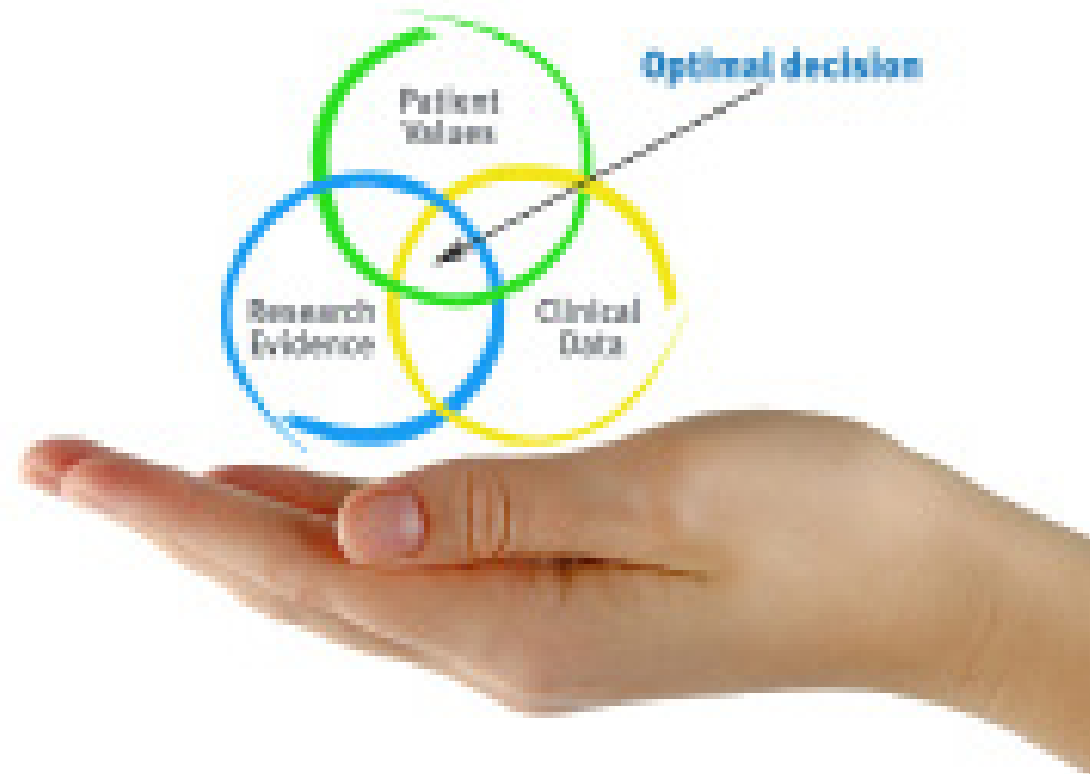
“

*Discover Relearning, a system that abandons conventional linear learning, to take you through cyclical teaching systems: a way of learning that has proven to be extremely effective, especially in subjects that require memorization"*

## At TECH we use the Case Method

What should a professional do in a given situation? Throughout the program, students will face multiple simulated clinical cases, based on real patients, in which they will have to do research, establish hypotheses, and ultimately resolve the situation. There is an abundance of scientific evidence on the effectiveness of the method. Specialists learn better, faster, and more sustainably over time.

*With TECH you will experience a way of learning that is shaking the foundations of traditional universities around the world.*



According to Dr. Gervas, the clinical case is the annotated presentation of a patient, or group of patients, which becomes a "case", an example or model that illustrates some peculiar clinical component, either because of its teaching power or because of its uniqueness or rarity. It is essential that the case is based on current professional life, trying to recreate the real conditions in the physician's professional practice.

“

*Did you know that this method was developed in 1912, at Harvard, for law students? The case method consisted of presenting students with real-life, complex situations for them to make decisions and justify their decisions on how to solve them. In 1924, Harvard adopted it as a standard teaching method”*

The effectiveness of the method is justified by four fundamental achievements:

1. Students who follow this method not only achieve the assimilation of concepts, but also a development of their mental capacity, through exercises that evaluate real situations and the application of knowledge.
2. Learning is solidly translated into practical skills that allow the student to better integrate into the real world.
3. Ideas and concepts are understood more efficiently, given that the example situations are based on real-life.
4. Students like to feel that the effort they put into their studies is worthwhile. This then translates into a greater interest in learning and more time dedicated to working on the course.



## Relearning Methodology

At TECH we enhance the case method with the best 100% online teaching methodology available: Relearning.

This university is the first in the world to combine the study of clinical cases with a 100% online learning system based on repetition, combining a minimum of 8 different elements in each lesson, a real revolution with respect to the mere study and analysis of cases.

*Professionals will learn through real cases and by resolving complex situations in simulated learning environments. These simulations are developed using state-of-the-art software to facilitate immersive learning.*



At the forefront of world teaching, the Relearning method has managed to improve the overall satisfaction levels of professionals who complete their studies, with respect to the quality indicators of the best online university (Columbia University).

With this methodology, more than 250,000 physicians have been trained with unprecedented success in all clinical specialties regardless of surgical load. Our pedagogical methodology is developed in a highly competitive environment, with a university student body with a strong socioeconomic profile and an average age of 43.5 years old.

*Relearning will allow you to learn with less effort and better performance, involving you more in your specialization, developing a critical mindset, defending arguments, and contrasting opinions: a direct equation to success.*

In our program, learning is not a linear process, but rather a spiral (learn, unlearn, forget, and re-learn). Therefore, we combine each of these elements concentrically.

The overall score obtained by TECH's learning system is 8.01, according to the highest international standards.



This program offers the best educational material, prepared with professionals in mind:



#### Study Material

All teaching material is produced by the specialists who teach the course, specifically for the course, so that the teaching content is highly specific and precise.

These contents are then applied to the audiovisual format, to create the TECH online working method. All this, with the latest techniques that offer high quality pieces in each and every one of the materials that are made available to the student.



#### Surgical Techniques and Procedures on Video

TECH introduces students to the latest techniques, the latest educational advances and to the forefront of current medical techniques. All of this in direct contact with students and explained in detail so as to aid their assimilation and understanding. And best of all, you can watch the videos as many times as you like.



#### Interactive Summaries

The TECH team presents the contents attractively and dynamically in multimedia lessons that include audio, videos, images, diagrams, and concept maps in order to reinforce knowledge.

This exclusive educational system for presenting multimedia content was awarded by Microsoft as a "European Success Story".



#### Additional Reading

Recent articles, consensus documents and international guidelines, among others. In TECH's virtual library, students will have access to everything they need to complete their course.





#### Expert-Led Case Studies and Case Analysis

Effective learning ought to be contextual. Therefore, TECH presents real cases in which the expert will guide students, focusing on and solving the different situations: a clear and direct way to achieve the highest degree of understanding.



#### Testing & Retesting

We periodically evaluate and re-evaluate students' knowledge throughout the program, through assessment and self-assessment activities and exercises, so that they can see how they are achieving their goals.



#### Classes

There is scientific evidence on the usefulness of learning by observing experts. The system known as Learning from an Expert strengthens knowledge and memory, and generates confidence in future difficult decisions.



#### Quick Action Guides

TECH offers the most relevant contents of the course in the form of worksheets or quick action guides. A synthetic, practical, and effective way to help students progress in their learning.



# 10 Certificate

The Hybrid Professional Master's Degree in Gynecologic Oncology guarantees students, in addition to the most rigorous and up-to-date education, access to a Hybrid Professional Master's Degree diploma issued by TECH Global University.





“

*Successfully complete this program and receive your university qualification without having to travel or fill out laborious paperwork”*

This program will allow you to obtain your **Hybrid Professional Master's Degree diploma in Gynecologic Oncology** endorsed by **TECH Global University**, the world's largest online university.

**TECH Global University** is an official European University publicly recognized by the Government of Andorra (**official bulletin**). Andorra is part of the European Higher Education Area (EHEA) since 2003. The EHEA is an initiative promoted by the European Union that aims to organize the international training framework and harmonize the higher education systems of the member countries of this space. The project promotes common values, the implementation of collaborative tools and strengthening its quality assurance mechanisms to enhance collaboration and mobility among students, researchers and academics.

This **TECH Global University** title is a European program of continuing education and professional updating that guarantees the acquisition of competencies in its area of knowledge, providing a high curricular value to the student who completes the program.

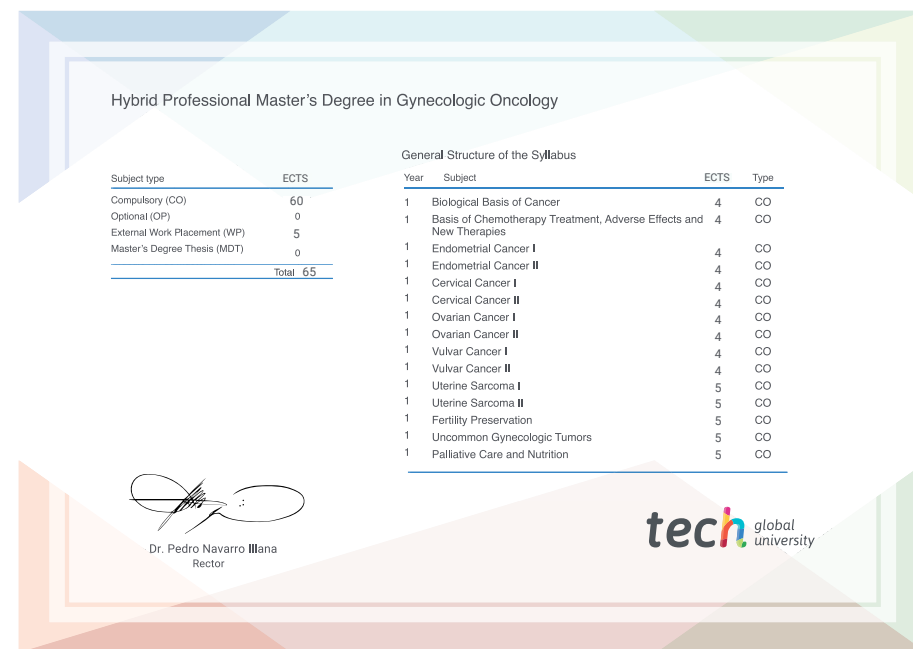
Title: **Hybrid Professional Master's Degree in Gynecologic Oncology**

Course Modality: **Hybrid (Online + Clinical Internship)**

Duration: **12 months**

Certificate: **TECH Global University**

Recognition: **60 + 5 ECTS Credits**



\*Apostille Convention. In the event that the student wishes to have their paper diploma issued with an apostille, TECH Global University will make the necessary arrangements to obtain it, at an additional cost.

future  
health confidence people  
education information tutors  
guarantee accreditation teaching  
institutions technology learning  
community commitment  
personalized service innovation  
knowledge present quality  
online training  
development languages  
virtual classroom



## Hybrid Professional Master's Degree

Gynecologic Oncology

Modality: Hybrid (Online + Clinical Internship)

Duration: 12 months

Certificate: TECH Global University

60 + 5 créditos ECTS

# Hybrid Professional Master's Degree

## Gynecologic Oncology

