

# Postgraduate Certificate Corporate Data Processing and Security



## Postgraduate Certificate Corporate Data Processing and Security

- » Modality: online
- » Duration: 2 months
- » Certificate: TECH Technological University
- » Dedication: 16h/week
- » Schedule: at your own pace
- » Exams: online

Website: [www.techtute.com/us/information-technology/postgraduate-certificate/corporate-data-processing-security](http://www.techtute.com/us/information-technology/postgraduate-certificate/corporate-data-processing-security)

# Index

01

Introduction

---

*p. 4*

02

Objectives

---

*p. 8*

03

Course Management

---

*p. 12*

04

Structure and Content

---

*p. 16*

05

Methodology

---

*p. 20*

06

Certificate

---

*p. 28*

# 01

# Introduction

Data is the fundamental raw material for research and knowledge advancement. In recent years, there has been an increase in initiatives that have made the creation, access, use and preservation of data as another axis within the work of communities linked to research in various areas of knowledge. This intensive program offers students specialized knowledge in data management and security, focusing on its typology and life cycle and practical approach through the available resources.



Net Revenue  
\$1.12M

↑ 7.7%

Breakdown

23	New Trials	
41	New Subscriptions	+ \$1,324.17
23	Expansions	+ \$837.70
3	Reactivations	+ \$92.37
1	Contraction	- \$90.00
45	Churns	- \$1,987.09

Other Revenue  
\$0

↓ 100.0%

Annual Run Rate  
\$15.1M

↑ 3.9%

Total Change  
+ \$1

RR Growth Rate  
3.2%

↑ 33.7%

Live Stream

“

*Comprehensive yet focused; this program will provide you with the specific knowledge IT professionals need to compete among the best in the sector”*

The information handled by companies or entities implies having information that, in many cases, requires the handling of personal data. Regulation (EU) 2016/679 of the European Parliament and of the Council of 27 April 2016 on the protection of individuals with regard to personal data processing and on the free movement of such data and repealing Directive 95/46/EC (General Data Protection Regulation), poses compliance challenges that must be observed at all stages of the data lifecycle, just as we discuss the lifecycle of any project.

Knowing the regulatory context in which the data driven economy is framed will help to focus the work of data analytics professionals so that they can have assessment criteria to identify the obligations imposed by the regulations; the rights of individuals, in relation with personal data processing and detect the inherent and residual risks of the project to be addressed, not only from compliance with legal aspects, but also from the design and implementation of technical and security requirements that must be observed.

Any project must ensure the legitimacy of massive personal data processing, validating both the data collected at source and the data derived or that may be inferred from them; there are legal peculiarities associated with profile generation and behavior monitoring, the exercise of certain rights by individuals and decision making based solely on automated data processing.

Finally, it should be noted that data protection is not only limited to regulatory compliance. Proper implementation of data protection principles in the project will also contribute to benefits related to ensuring that data analysts, as well as other fields involved such as marketing and innovation departments, have quality data that respect data retention and retention periods.

The main objective is to enable students to apply the knowledge acquired in this course to the real world, in a work environment that reproduces the conditions that may be encountered in the future, in a rigorous and realistic manner.

This **Postgraduate Certificate in Corporate Data Processing and Security** contains the most complete and up-to-date educational program on the market. The most important features include:

- ◆ Practical cases presented by experts in the field of Corporate Data Processing and Security
- ◆ The graphic, schematic, and practical contents with which they are created, provide scientific and practical information on the disciplines that are essential for professional practice
- ◆ Practical exercises where self-assessment can be used to improve learning
- ◆ Its special emphasis on innovative methodologies
- ◆ Theoretical lessons, questions to the expert, debate forums on controversial topics, and individual reflection assignments
- ◆ Content that is accessible from any fixed or portable device with an Internet connection



*With the best developed distance learning systems, this Postgraduate Certificate will allow you to learn in a contextual way, learning the practical skills that you need"*

“*A complete and cutting-edge program that will allow you to acquire the knowledge you need to work in this sector in a progressive and comprehensive manner*”

The program's teaching staff includes professionals from sector who contribute their work experience to this training program, as well as renowned specialists from leading societies and prestigious universities.

The multimedia content, developed with the latest educational technology, will provide the professional with situated and contextual learning, i.e., a simulated environment that will provide immersive education programmed to learn in real situations.

This program is designed around Problem-Based Learning, whereby the professional must try to solve the different professional practice situations that arise during the academic year. For this purpose, the student will be assisted by an innovative interactive video system created by renowned and experienced experts.

*An intensive professional growth program that will allow you to intervene in a sector with a growing demand for professionals.*

*A unique, key, and decisive specialization experience to boost your professional development.*

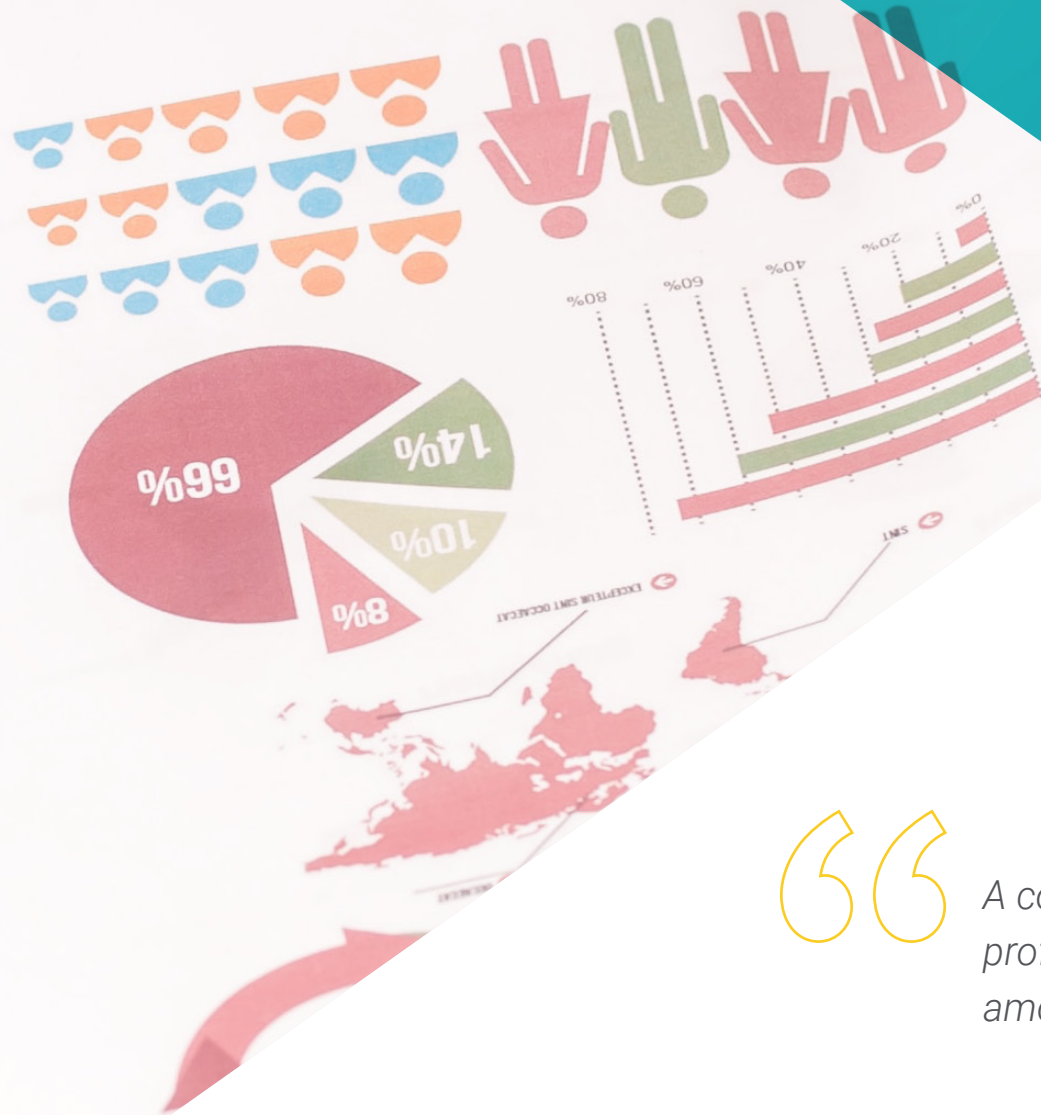


# 02 Objectives

The objective of this program is to prepare professionals in Corporate Data Processing and Security, with the necessary knowledge and skills to carry out their activity, using the most advanced protocols and techniques of today. Through a totally adaptable work approach, this Postgraduate Certificate will progressively lead students to acquire the skills that will propel them to a higher professional level. A unique program designed by professionals with extensive experience in the field.







“

*A comprehensive program for engineering professionals, which will allow them to compete among the most prepared in the sector"*



## General Objectives

---

- ◆ Develop each stage of the data lifecycle
- ◆ Determine the conditions to be met to optimize data use and quality
- ◆ Determine the principles that should guide Personal Data Processing
- ◆ Develop responsible data analytics projects
- ◆ Assess and manage privacy risks



*All the subjects and areas of knowledge have been compiled in a complete and up-to-date syllabus, in order to bring the student to the highest theoretical and practical level"*





## Specific Objectives

---

### Module 1. Data Types and Data Life Cycle

- ◆ Generate specialized knowledge to perform data analysis
- ◆ Unify diverse data, Achieving consistency of information
- ◆ Produce relevant, effective information, for decision making
- ◆ Establish best practices for data management according to their typology and uses
- ◆ Use data management tools (with R)

03

# Course Management

In accordance with its maxim of offering an elite education for all, TECH counts on renowned professionals in order for students to acquire solid knowledge in Corporate Data Processing and Security. This Postgraduate Certificate has a highly qualified and experienced team in the field, which will offer the best possible resources for students in developing their skills during the program. In this way, students have the guarantees they need to specialize at an international level in a booming sector that will catapult them to professional success.



“

*In this Postgraduate Certificate, you will be able to balance the efficiency of the most advanced learning methods with the flexibility of a program created to adapt to your possibilities of dedication, without losing quality"*

## Management



### Dr. Peralta Martín-Palomino, Arturo

- CEO and CTO at Prometheus Global Solutions
- CTO en Corporate Technologies in Corporate Technologies
- CTO in AI Shephers GmbH
- Director of Design and Development at DocPath Document Solutions
- Team Leader in DocPath Document Solutions
- Doctorate in Psychology from the University of Castilla La Mancha
- PhD in Economics, Business and Finance from the Camilo José Cela University
- Master's Degree in Advanced Information Technologies from the University of Castilla La Mancha
- Master MBA+E (Master's Degree in Business Administration and Organisational Engineering) from the University of Castilla la Mancha
- Associate lecturer, teaching undergraduate and master's degrees in Computer Engineering at the University of Castilla la Mancha
- Professor of the Master in Big Data and Data Science at the International University of Valencia
- Professor of the Master's in Industry 4.0 and of the Master's in Industrial Design and Development Member of the SMILe Research Group of the University of Castilla la Mancha

## Professors

### Ms. Fernández Meléndez, Galina

- ◆ Data Analyst. Aresi | Gestión de Fincas - Madrid-Spain
- ◆ Data Analyst. ADN Mobile Solution-Gijón-Spain
- ◆ ETL processes, data mining, data analysis and visualisation, establishment of KPI's, Dashboard design and implementation, management control. ADN Mobile Solution-Gijón-Spain R development, SQL management, among others. Pattern determination, predictive modelling, machine learning
- ◆ Bachelor's degree in Business Administration. Bicentennial University of Aragua-Caracas- Diploma in Planning and Public Finance. Venezuelan School of Planning, School of Finance
- ◆ Professional Master's Degree in Data Analysis and Business Intelligence. University of Oviedo
- ◆ MBA in Business Administration and Management (Escuela De Negocios Europea de Barcelona)
- ◆ Master in Big Data and Business Intelligence (Escuela de Negocios Europea de Barcelona)

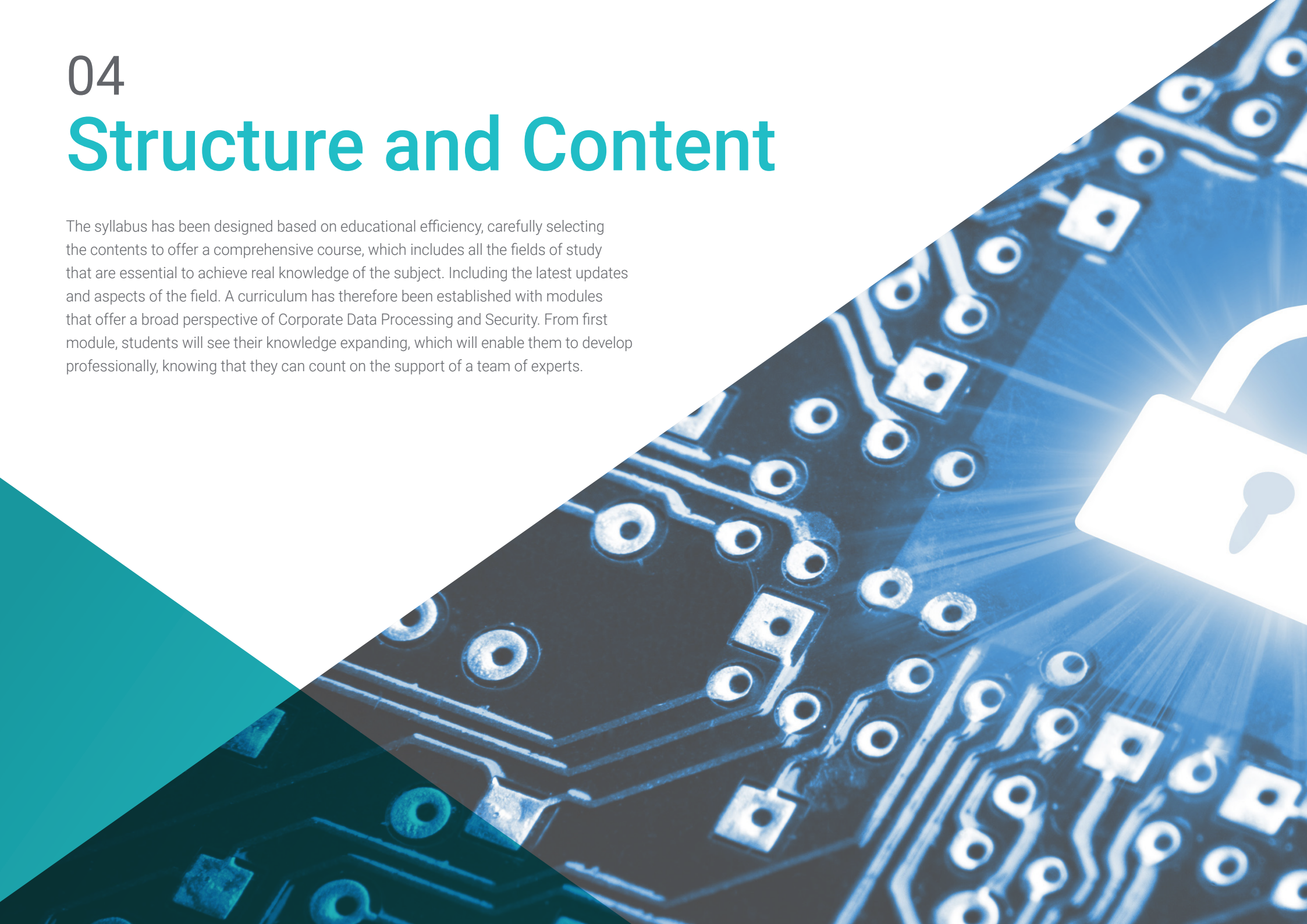
### Ms. Palomino Dávila, Cristina

- ◆ Consultant and Senior GRC Auditor. Compliance with legislation Data Protection, National Security Scheme and information security regulatory frameworks. Oesía Networks, S.L
- ◆ Consultant and Senior Auditor in Personal Data Protection and information society services Compliance with legislation. Criminal Compliance Helas Consultores, S.L
- ◆ Preparation of contents and delivery of numerous training and awareness-raising seminars on data protection and information security, in the area of company-client relations
- ◆ Internal audits Audit Sub-Directorate - General Secretariat. Internal data protection audit of CLH Group companies located in Spain and the United Kingdom. Compañía Logística de Hidrocarburos CLH, S.A
- ◆ Graduate in Law from the University of Castilla – La Mancha
- ◆ Master's Degree in Legal Consultancy for Businesses from the Instituto de Empresa
- ◆ Advanced Course in Digital Security and Crisis Management by the University of Alcalá and the Spanish Security and Crisis Alliance– AESYC
- ◆ Senior Graduate Corporate Legal Relations Area Madrid. Support to the Data Protection Delegate of the company and participated companies Canal de Isabel II, S.A


# 04

## Structure and Content

The syllabus has been designed based on educational efficiency, carefully selecting the contents to offer a comprehensive course, which includes all the fields of study that are essential to achieve real knowledge of the subject. Including the latest updates and aspects of the field. A curriculum has therefore been established with modules that offer a broad perspective of Corporate Data Processing and Security. From first module, students will see their knowledge expanding, which will enable them to develop professionally, knowing that they can count on the support of a team of experts.







“Succeed with the best and acquire the knowledge and skills you need to enter the field of Corporate Data Processing and Security”

## Module 1. Data Types and Data Life Cycle

- 1.1. Statistics
  - 1.1.1. Statistics: Descriptive Statistics, Statistical Inferences
  - 1.1.2. Population, Sample, Individual
  - 1.1.3. Variables: Definition, Measurement Scales
- 1.2. Types of Data Statistics
  - 1.2.1. According to Type
    - 1.2.1.1. Quantitative: Continuous Data and Discrete Data
    - 1.2.1.2. Qualitative: Binomial Data, Nominal Data and Ordinal Data
  - 1.2.2. According to their Shape
    - 1.2.2.1. Numeric
    - 1.2.2.2. Text
    - 1.2.2.3. Logical
  - 1.2.3. According to its Source
    - 1.2.3.1. Primary
    - 1.2.3.2. Secondary
- 1.3. Life Cycle of Data
  - 1.3.1. Stages of the Cycle
  - 1.3.2. Milestones of the Cycle
  - 1.3.3. FAIR Principles
- 1.4. Initial Stages of the Cycle
  - 1.4.1. Definition of Goals
  - 1.4.2. Determination of Resource Requirements
  - 1.4.3. Gantt Chart
  - 1.4.4. Data Structure
- 1.5. Data Collection
  - 1.5.1. Methodology of Data Collection
  - 1.5.2. Data Collection Tools
  - 1.5.3. Data Collection Channels
- 1.6. Data Cleaning
  - 1.6.1. Phases of Data Cleansing
  - 1.6.2. Data Quality
  - 1.6.3. Data Manipulation (with R)
- 1.7. Data Analysis, Interpretation and Evaluation of Results
  - 1.7.1. Statistical Measures
  - 1.7.2. Relationship Indices
  - 1.7.3. Data Mining
- 1.8. Data Warehouse
  - 1.8.1. Elements of a Data Warehouse
  - 1.8.2. Design
  - 1.8.3. Aspects to Consider
- 1.9. Data Availability
  - 1.9.1. Access
  - 1.9.2. Uses
  - 1.9.3. Security



*A high-quality Postgraduate Certificate that will allow students to advance quickly and steadily in knowledge acquisition, with the scientific rigor of a global quality teaching"*

```
2. Sep 15:53 ..
8. Sep 2015 bin -> usr/bin
19. Sep 09:31 boot
21. Sep 15:50 dev
19. Sep 09:32 etc
21. Sep 15:52 home
7 30. Sep 2015 lib -> usr/lib
7 30. Sep 2015 lib64 -> usr/lib
84 23. Jul 10:01 lost+found
96 1. Aug 22:45 mnt
96 30. Sep 2015 opt
16 21. Sep 15:52 private -> /home/encrypted
0 21. Sep 08:15 proc
4096 12. Aug 15:37 root
560 21. Sep 15:50 run
7 30. Sep 2015 sbin -> usr/bin
4096 30. Sep 2015 srv
0 21. Sep 15:51 sys
300 21. Sep 15:45 tmp
4096 12. Aug 15:39 usr
4096 23. Jul 10:25 var
```

# 05 Methodology

This academic program offers students a different way of learning. Our methodology uses a cyclical learning approach: **Relearning**.

This teaching system is used, for example, in the most prestigious medical schools in the world, and major publications such as the **New England Journal of Medicine** have considered it to be one of the most effective.



“

*Discover Relearning, a system that abandons conventional linear learning, to take you through cyclical teaching systems: a way of learning that has proven to be extremely effective, especially in subjects that require memorization"*

## Case Study to contextualize all content

Our program offers a revolutionary approach to developing skills and knowledge. Our goal is to strengthen skills in a changing, competitive, and highly demanding environment.

“

*At TECH, you will experience a learning methodology that is shaking the foundations of traditional universities around the world”*



*You will have access to a learning system based on repetition, with natural and progressive teaching throughout the entire syllabus.*



*The student will learn to solve complex situations in real business environments through collaborative activities and real cases.*

### A learning method that is different and innovative

This TECH program is an intensive educational program, created from scratch, which presents the most demanding challenges and decisions in this field, both nationally and internationally. This methodology promotes personal and professional growth, representing a significant step towards success. The case method, a technique that lays the foundation for this content, ensures that the most current economic, social and professional reality is taken into account.

“*Our program prepares you to face new challenges in uncertain environments and achieve success in your career”*

The case method has been the most widely used learning system among the world's leading Information Technology schools for as long as they have existed. The case method was developed in 1912 so that law students would not only learn the law based on theoretical content. It consisted of presenting students with real-life, complex situations for them to make informed decisions and value judgments on how to resolve them. In 1924, Harvard adopted it as a standard teaching method.

What should a professional do in a given situation? This is the question that you are presented with in the case method, an action-oriented learning method. Throughout the course, students will be presented with multiple real cases. They will have to combine all their knowledge and research, and argue and defend their ideas and decisions.

## Relearning Methodology

TECH effectively combines the Case Study methodology with a 100% online learning system based on repetition, which combines different teaching elements in each lesson.

We enhance the Case Study with the best 100% online teaching method: Relearning.

*In 2019, we obtained the best learning results of all online universities in the world.*

At TECH you will learn using a cutting-edge methodology designed to train the executives of the future. This method, at the forefront of international teaching, is called Relearning.

Our university is the only one in the world authorized to employ this successful method. In 2019, we managed to improve our students' overall satisfaction levels (teaching quality, quality of materials, course structure, objectives...) based on the best online university indicators.





In our program, learning is not a linear process, but rather a spiral (learn, unlearn, forget, and re-learn). Therefore, we combine each of these elements concentrically.

This methodology has trained more than 650,000 university graduates with unprecedented success in fields as diverse as biochemistry, genetics, surgery, international law, management skills, sports science, philosophy, law, engineering, journalism, history, and financial markets and instruments. All this in a highly demanding environment, where the students have a strong socio-economic profile and an average age of 43.5 years.

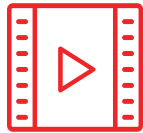
*Relearning will allow you to learn with less effort and better performance, involving you more in your training, developing a critical mindset, defending arguments, and contrasting opinions: a direct equation for success.*

From the latest scientific evidence in the field of neuroscience, not only do we know how to organize information, ideas, images and memories, but we know that the place and context where we have learned something is fundamental for us to be able to remember it and store it in the hippocampus, to retain it in our long-term memory.

In this way, and in what is called neurocognitive context-dependent e-learning, the different elements in our program are connected to the context where the individual carries out their professional activity.



This program offers the best educational material, prepared with professionals in mind:



### Study Material

All teaching material is produced by the specialists who teach the course, specifically for the course, so that the teaching content is highly specific and precise.

These contents are then applied to the audiovisual format, to create the TECH online working method. All this, with the latest techniques that offer high quality pieces in each and every one of the materials that are made available to the student.



### Classes

There is scientific evidence suggesting that observing third-party experts can be useful.

Learning from an Expert strengthens knowledge and memory, and generates confidence in future difficult decisions.



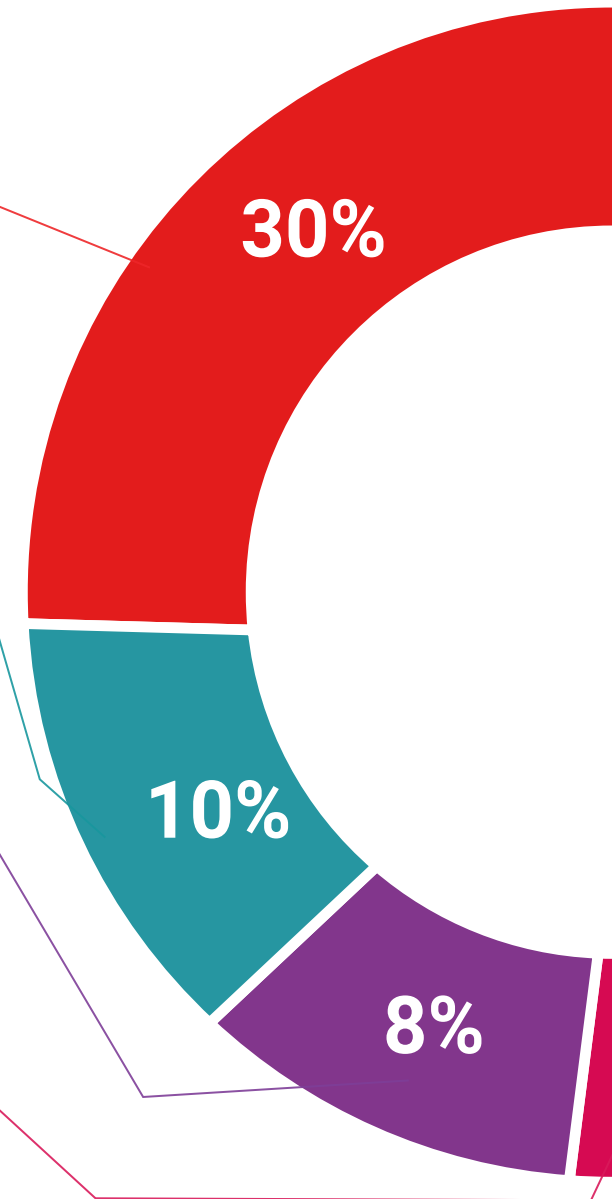
### Practising Skills and Abilities

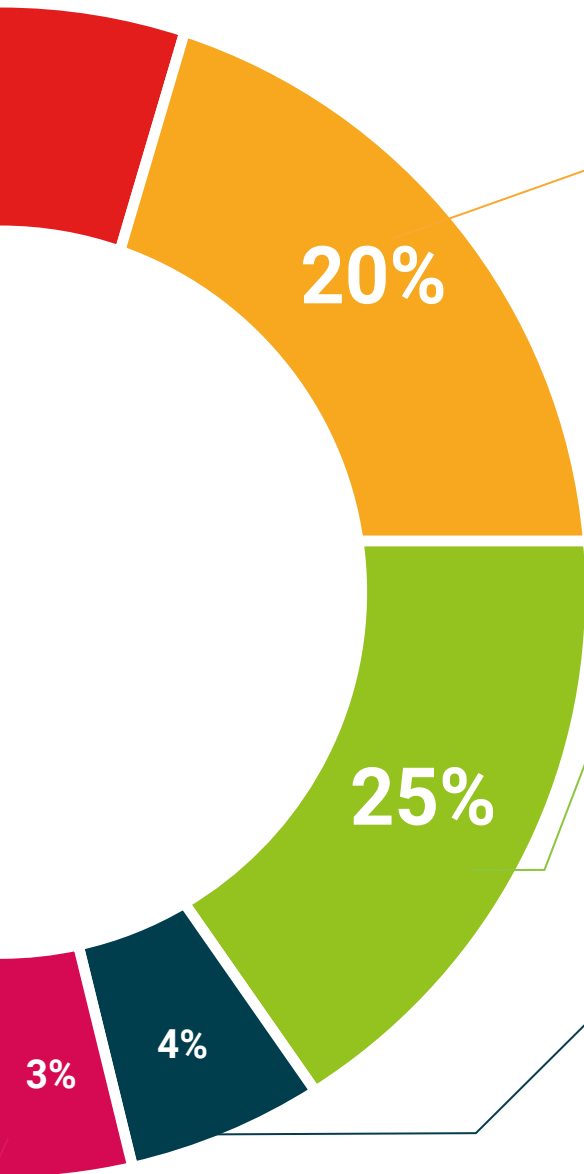
They will carry out activities to develop specific skills and abilities in each subject area. Exercises and activities to acquire and develop the skills and abilities that a specialist needs to develop in the context of the globalization that we are experiencing.



### Additional Reading

Recent articles, consensus documents and international guidelines, among others. In TECH's virtual library, students will have access to everything they need to complete their course.





#### Case Studies

Students will complete a selection of the best case studies chosen specifically for this program. Cases that are presented, analyzed, and supervised by the best specialists in the world.



#### Interactive Summaries

The TECH team presents the contents attractively and dynamically in multimedia lessons that include audio, videos, images, diagrams, and concept maps in order to reinforce knowledge.

This exclusive educational system for presenting multimedia content was awarded by Microsoft as a "European Success Story".



#### Testing & Retesting

We periodically evaluate and re-evaluate students' knowledge throughout the program, through assessment and self-assessment activities and exercises, so that they can see how they are achieving their goals.



06

# Certificate

This Postgraduate Certificate in Corporate Data Processing and Security guarantees students, in addition to the most rigorous and up-to-date education, access to a Postgraduate Certificate issued by TECH Technological University.



“

*Successfully complete this program and receive your university qualification without having to travel or fill out laborious paperwork”*

This **Postgraduate Certificate in Corporate Data Processing and Security** contains the most complete and up-to-date educational program on the market.

After the student has passed the assessments, they will receive their corresponding **Postgraduate Certificate** issued by **TECH Technological University** via tracked delivery\*.

The diploma issued by **TECH Technological University** will reflect the qualification obtained in the Postgraduate Certificate, and meets the requirements commonly demanded by labor exchanges, competitive examinations and professional career evaluation committees.

Title: **Postgraduate Certificate in Corporate Data Processing and Security**

Official N° of Hours: **300 h.**



\*Apostille Convention. In the event that the student wishes to have their paper diploma issued with an apostille, TECH EDUCATION will make the necessary arrangements to obtain it, at an additional cost..

future  
health confidence people  
education information tutors  
guarantee accreditation teaching  
institutions technology learning  
community commitment  
personalized service innovation  
knowledge present  
development languages  
virtual classroom



Postgraduate Certificate  
Corporate Data  
Processing and Security

- » Modality: online
- » Duration: 2 months
- » Certificate: TECH Technological University
- » Dedication: 16h/week
- » Schedule: at your own pace
- » Exams: online

# Postgraduate Certificate

## Corporate Data Processing and Security

