

Postgraduate Certificate Advanced Modeling in Rhino





Postgraduate Certificate Advanced Modeling in Rhino

- » Modality: online
- » Duration: 6 weeks
- » Certificate: TECH Technological University
- » Dedication: 16h/week
- » Schedule: at your own pace
- » Exams: online

Website: www.techtitute.com/in/information-technology/postgraduate-certificate/advanced-rhino-modeling

Index

01

Introduction

p. 4

02

Objectives

p. 8

03

Course Management

p. 12

04

Structure and Content

p. 16

05

Methodology

p. 20

06

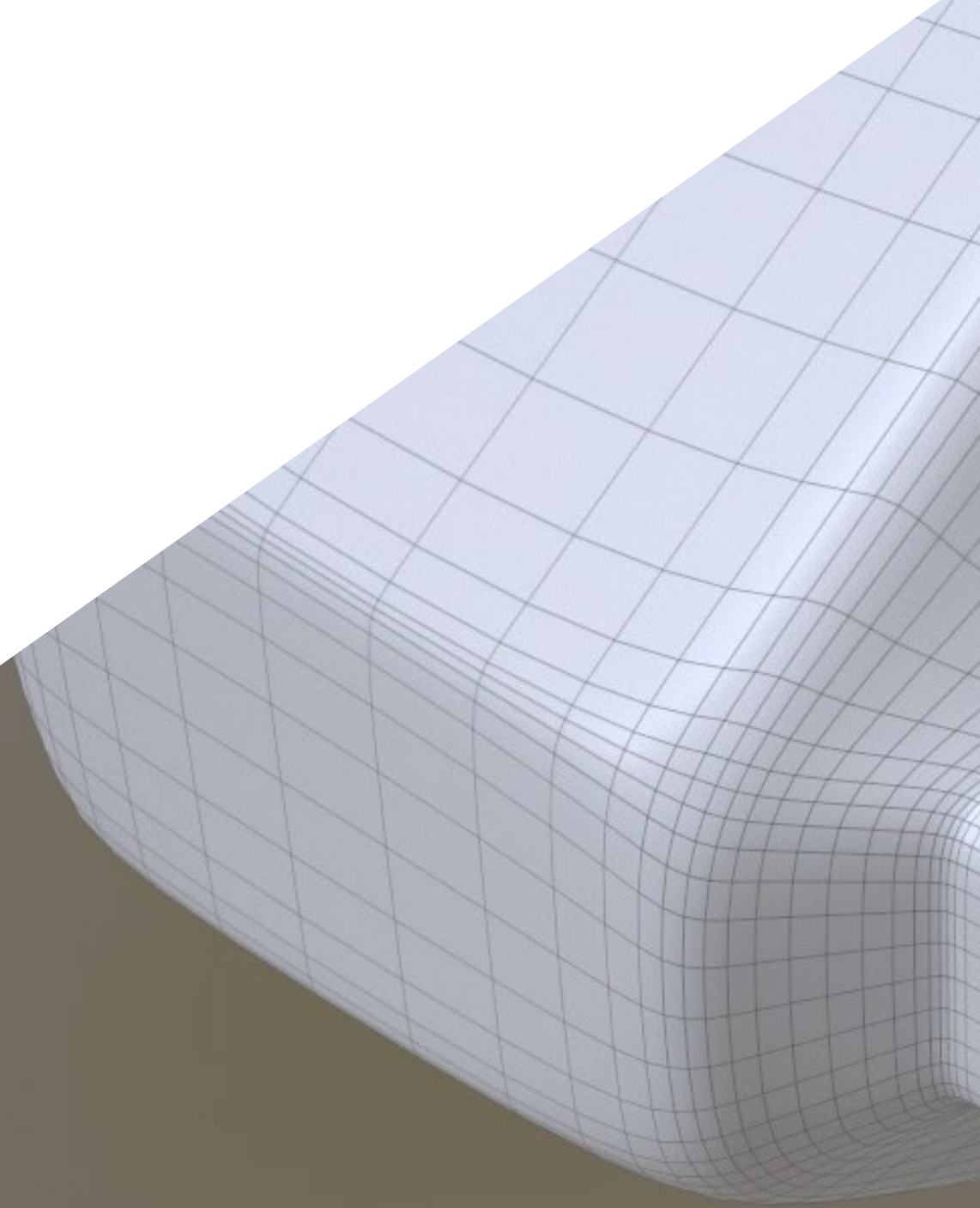
Certificate

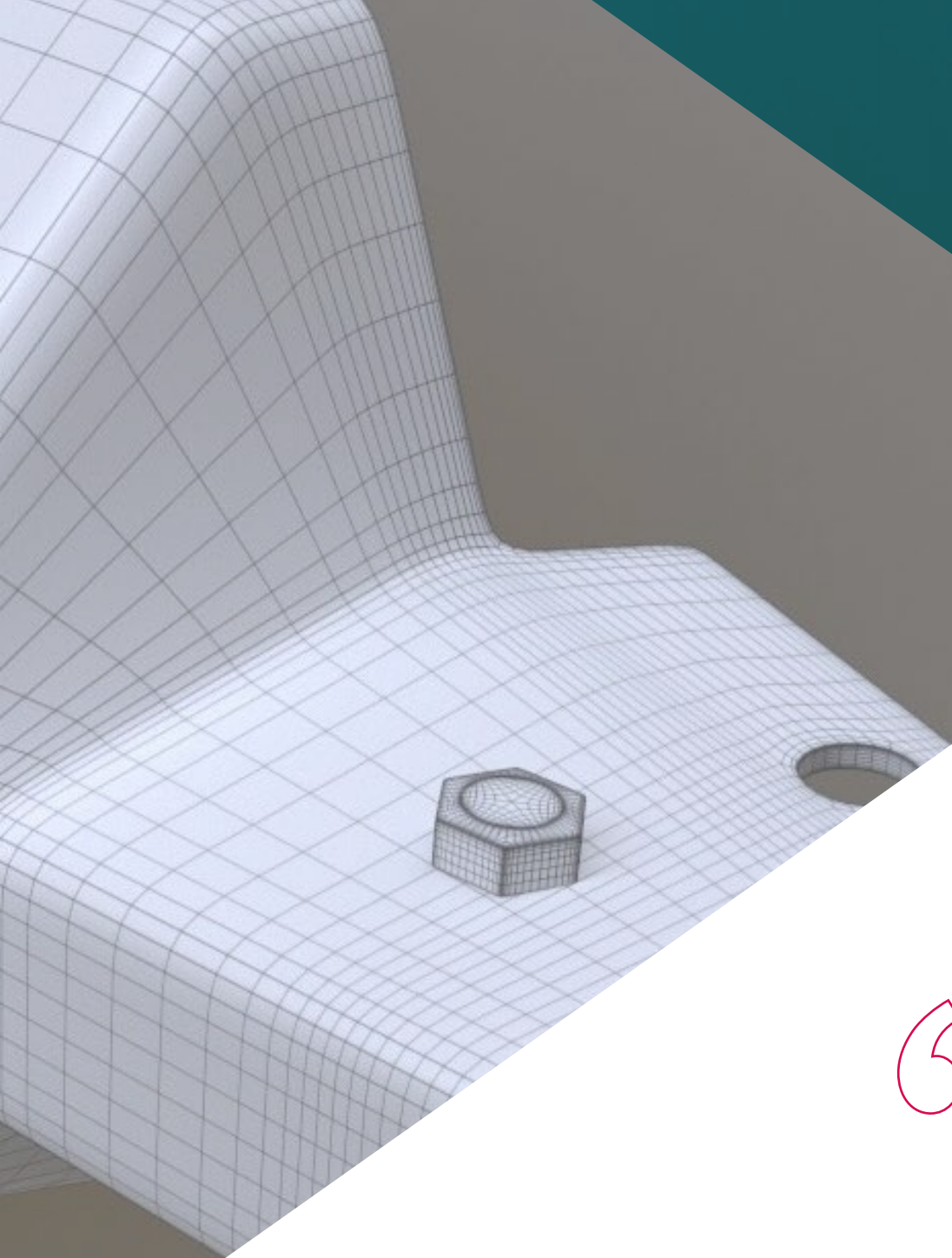
p. 28

01

Introduction

The three-dimensional modeling software Rhinoceros is probably one of the fastest growing and most consolidated in recent decades. Its great capabilities allow Rhino modeling to be used in multiple fields, for example: creation of models or plans, models for 3D printing or animation and video games. As the fields of application increase, so does the need for professionals with advanced skills and abilities in 3D design with Rhino. This 6-week educational program provides the keys to use the most complex configurations of this tool and apply them to new and more demanding professional challenges.





“

With this advanced Rhino modeling education plan, you will be able to face new and more demanding professional challenges”

Through this Postgraduate Certificate in advanced modeling in Rhino, the student is offered a deeper learning experience with this software. It is an educational program developed to go deeper into the more advanced configurations of the program so that the user can perform more sophisticated and complex modeling. The mechanisms used in the three-dimensional modeling process with Rhino ensure higher quality results.

The content of the course is based on an in-depth study of the application of techniques to advanced models and a detailed explanation of how the component parts of an advanced model work, all through the advanced modeling of a motorcycle with all its elements, including the axles that allow the mobility of this figure. Therefore, you work and acquire skills to order and work with the different parts of a complex model. In addition, it is possible to identify how the details are adjusted.

All this material is offered in a 6-week educational program in a completely online format, which gives access to all didactic and pedagogical materials on the virtual platform. In addition, TECH Technological University has designed this type of program so that they can be accredited with a direct system that allows them to obtain the final degree only by completing the educational plan, without the need to submit a final project or work.

This **Postgraduate Certificate in Advanced Modeling in Rhino** contains the most complete and up-to-date program on the market. The most important features include:

- ◆ The development of practical cases presented by experts in 3D Modeling in Rhino
- ◆ The graphic, schematic, and practical contents with which they are created, provide practical information on the disciplines that are essential for professional practice
- ◆ Practical exercises where the self-assessment process can be carried out to improve learning
- ◆ Its special emphasis on innovative methodologies
- ◆ Theoretical lessons, questions to the expert, debate forums on controversial topics, and individual reflection assignments
- ◆ Content that is accessible from any fixed or portable device with an Internet connection



Achieve more professional and accomplished finishes in your modeling with Rhinoceros thanks to this convenient online program”

“

Fully online and adapted to your own time and process: this Postgraduate Certificate will allow you to become an expert in Rhino modeling in the easiest way”

Learn in an eminently practical way to perform complex modeling with Rhino from TECH Technological University.

Achieving more elaborate and precise modeling with Rhinoceros will not be a problem for you after this training.

The program's teaching staff includes professionals from the sector who contribute their work experience to this educational program, as well as renowned specialists from leading societies and prestigious universities.

Its multimedia content, developed with the latest educational technology, will provide the professional with situated and contextual learning, i.e., a simulated environment that will provide an immersive education programmed to learn in real situations.

This program is designed around Problem-Based Learning, whereby the professional must try to solve the different professional practice situations that arise throughout the program. For this purpose, the student will be assisted by an innovative interactive video system created by renowned experts.



02 Objectives

In order for the graduate student to be able to create complex modeling with all its parts and mechanical components, mobility or whatever is necessary, this training focuses on the clear objective that the Rhino user knows how to handle it at an advanced level. Thanks to the specialized tools offered in modeling, rendering, analysis and fabrication in a wide variety of disciplines, all the learning can be applied to the design and development of any project required.



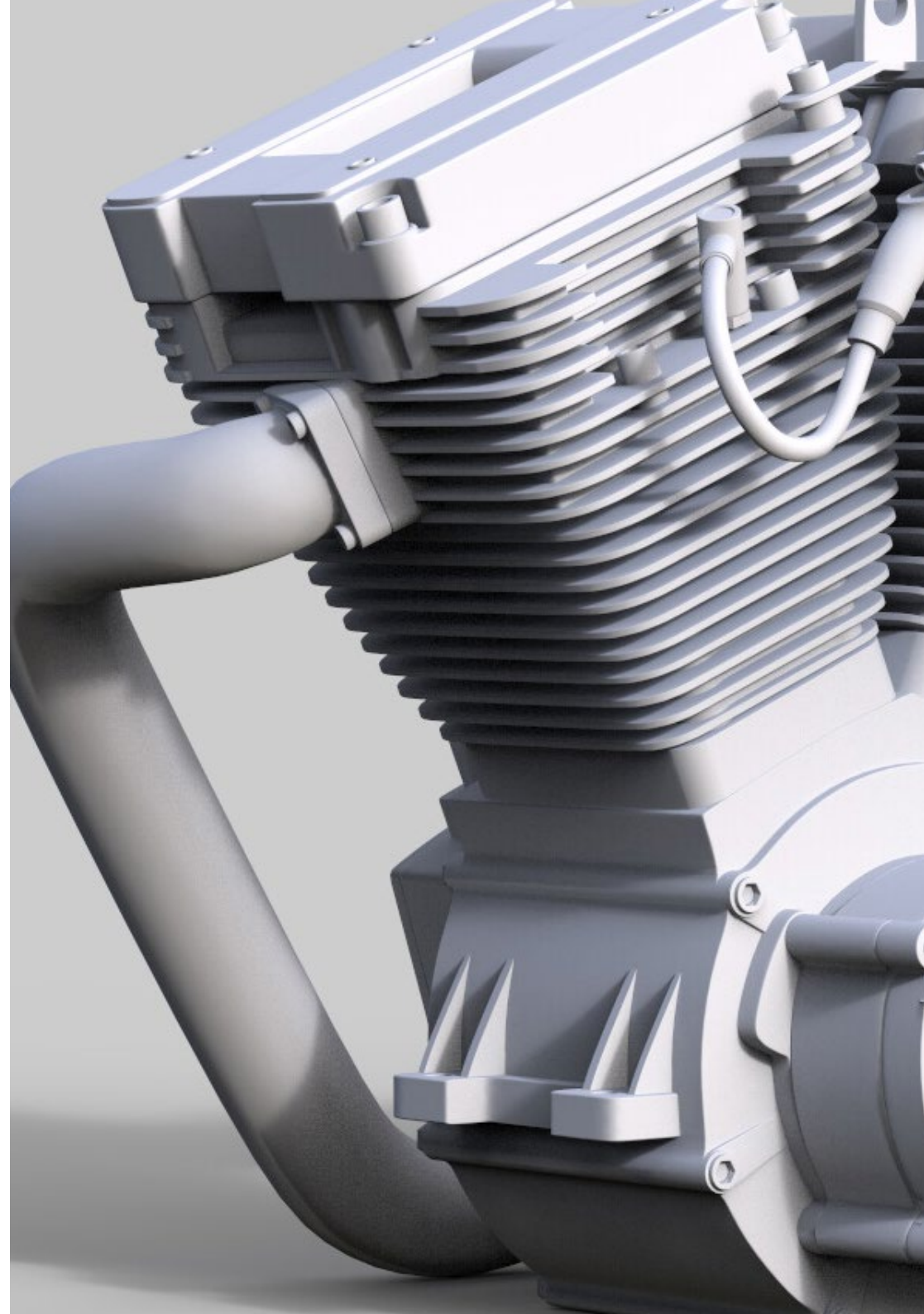
“

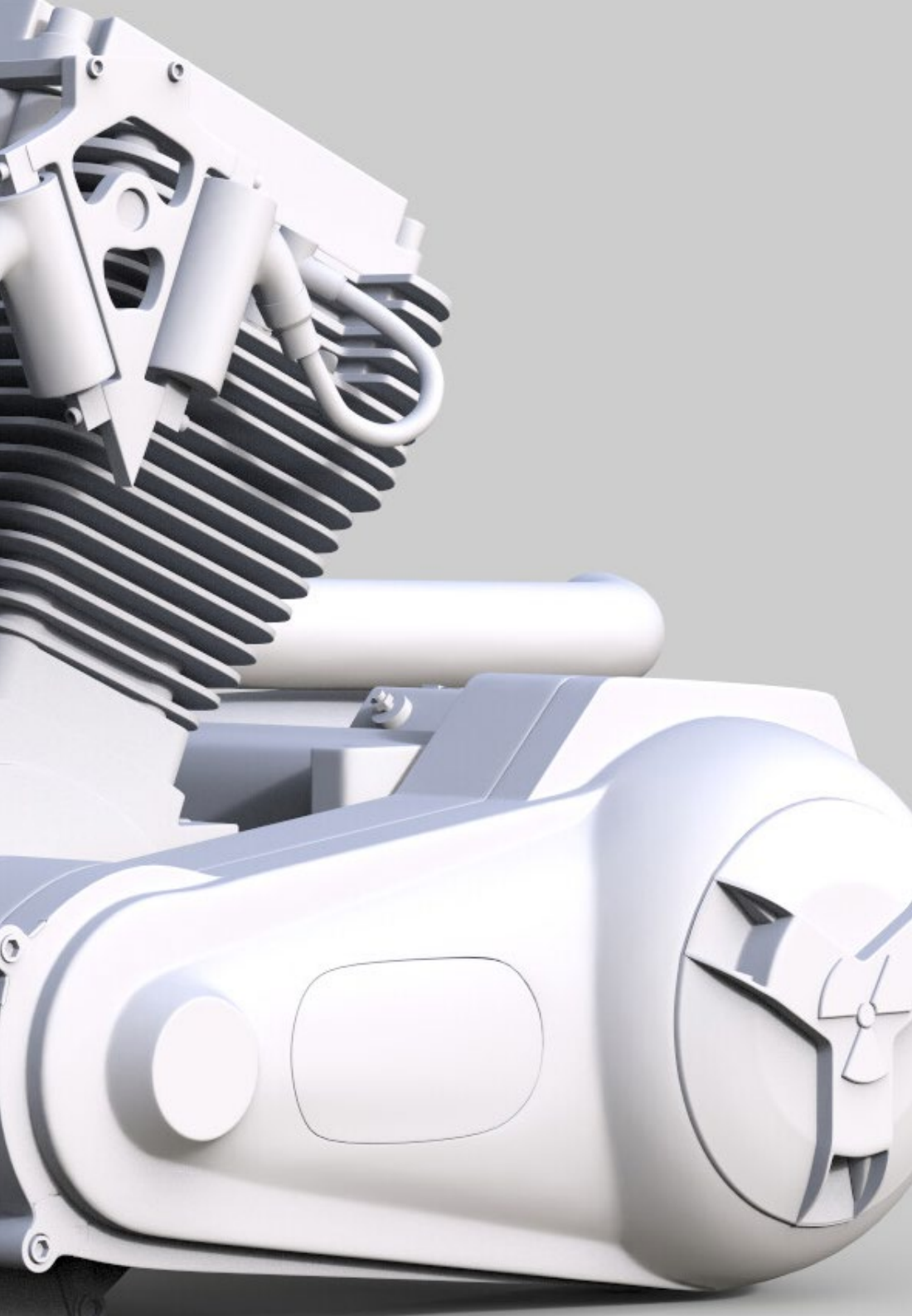
Apply the knowledge acquired in this Postgraduate Certificate to the design and development of any project that is put in front of you”



General Objectives

- ◆ Learn in depth and in an advanced way the 3D modeling through Rhino software
- ◆ Delve into the theory of shape creation in order to develop shape masters
- ◆ Learn in detail the techniques of Rhino software
- ◆ Generate designs for different industries and their application
- ◆ Be a technical expert and/or artist in Rhino software
- ◆ Know all the tools involved in the 3D modeling profession





Specific Objectives

- ◆ Learn in depth about the application of techniques to advanced models
- ◆ Understand in detail how the component parts of an advanced model work
- ◆ Work with different parts of a complex model
- ◆ Acquire skills to sort a complex model
- ◆ Identify how the details fit

“

Deepen your knowledge of the most advanced techniques in Rhino with this fully online training”

03

Course Management

The management and teaching staff of this Postgraduate Certificate is made up of prestigious professionals in three-dimensional and digital modeling, who also have a demonstrable research career. Their expertise provides students with an updated syllabus with the most avant-garde and applicable knowledge in professional development, who will be able to develop new skills and learn about the most internationally demanded Rhino platform tools.





“

*It is supported by a faculty
with great expertise in the field
of three-dimensional modeling”*

Management



Mr. Salvo Bustos, Gabriel Agustín

- ◆ 3D Artist at 3D VISUALIZATION SERVICE INC
- ◆ 3D Production for Boston Whaler
- ◆ 3D Modeler at Shay Bonder Multimedia TV Production Company
- ◆ Audiovisual Producer at Digital Film
- ◆ Product Designer for Escencia de los Artesanos by Eliana M
- ◆ Industrial Designer Specializing in Products. National University of Cuyo
- ◆ Exhibitor at the Regional Visual Arts Salon Vendimia
- ◆ Digital Composition Seminar. National University of Cuyo
- ◆ National Congress of design and production. CPRODI

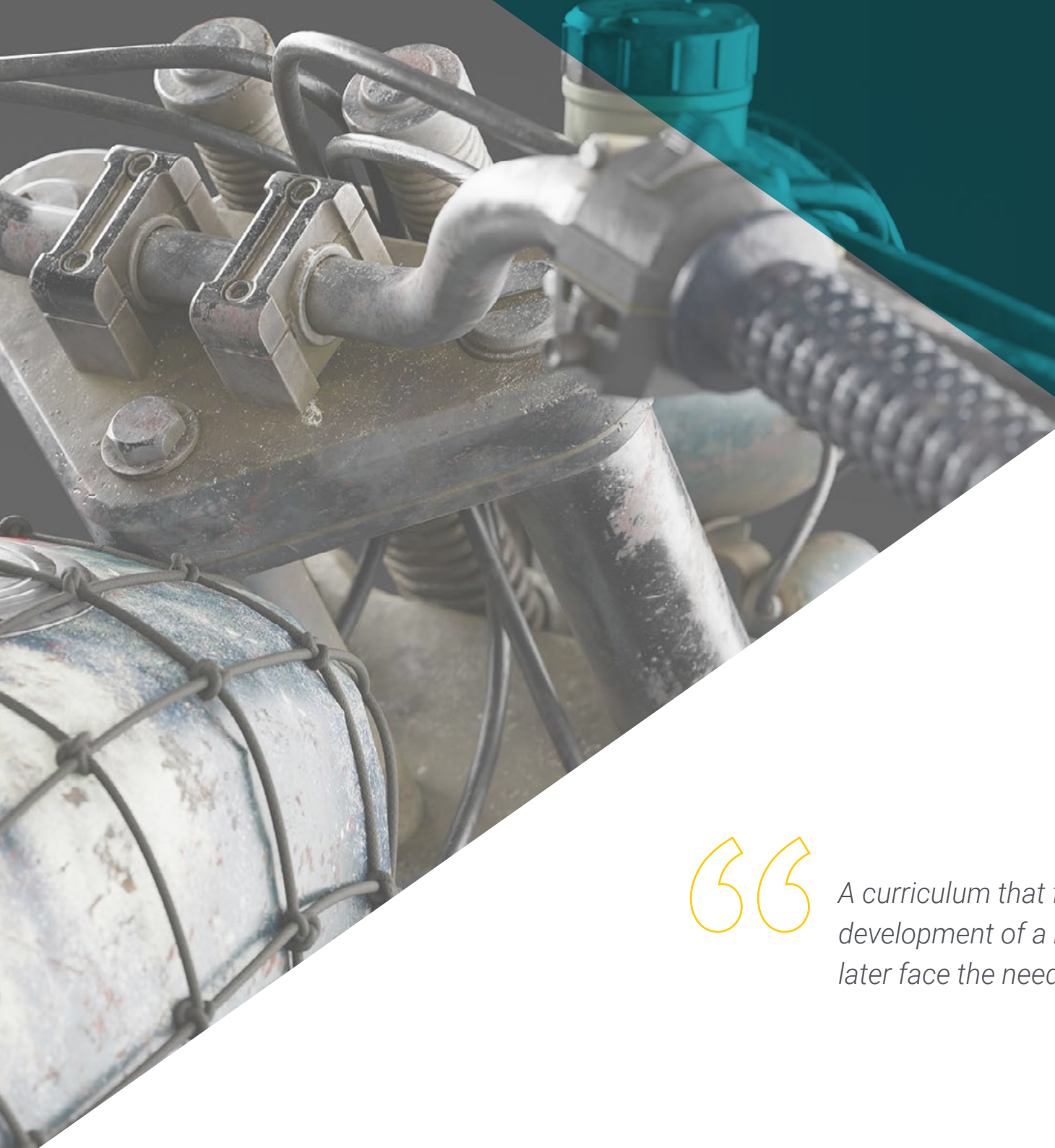


04

Structure and Content

This Postgraduate Certificate is organized with the purpose of creating an advanced model with Rhinoceros software, for which the first section will describe the modeling and the following sections will describe the component parts of the model. All Rhino tools will be explained in order to be able to put into practice the knowledge acquired and face the needs that arise in the real professional field.





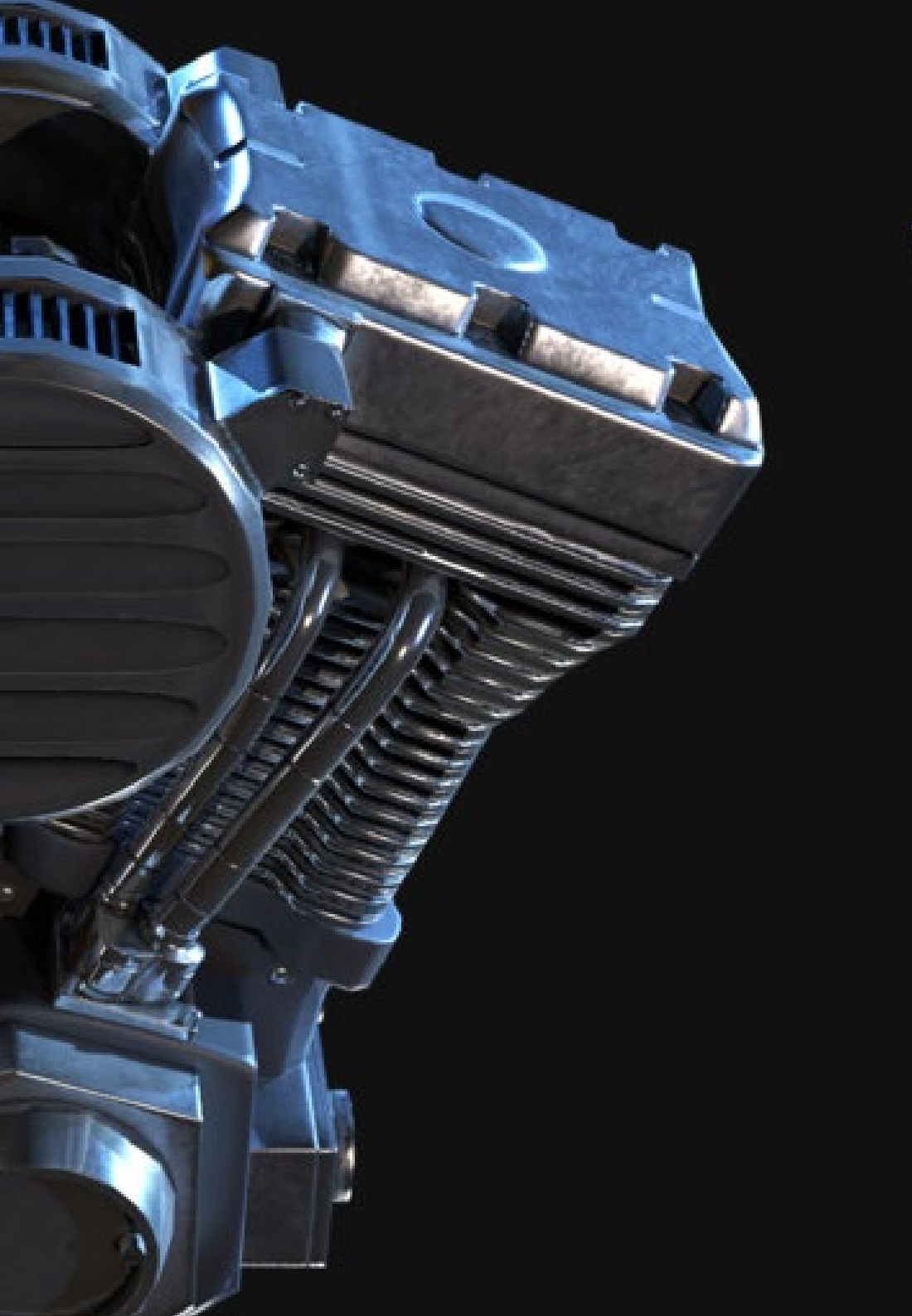
“

A curriculum that focuses on the practical development of a model, so that students can later face the needs that arise in professional life”

Module 1. Advanced Modeling in Rhino

- 1.1. Motorcycle Modeling
 - 1.1.1. Importing Reference Images
 - 1.1.2. Modeling of Rear Tire
 - 1.1.3. Modeling of Rear Rim
- 1.2. Mechanical Components of Rear Axle
 - 1.2.1. Creating the Braking System
 - 1.2.2. Building the Transmission Chain
 - 1.2.3. Modeling the Chain Cover
- 1.3. Engine Modeling
 - 1.3.1. Creation of the Body
 - 1.3.2. Adding Mechanical Elements
 - 1.3.3. Incorporating Technical Details
- 1.4. Modeling the Main Deck
 - 1.4.1. Modeling Curves and Surfaces
 - 1.4.2. Modeling the Deck
 - 1.4.3. Cutting the Frame
- 1.5. Modeling the Upper Area
 - 1.5.1. Building the Seat
 - 1.5.2. Creating Front End Details
 - 1.5.3. Creating Back End Details
- 1.6. Functional Parts
 - 1.6.1. Gasoline Tank
 - 1.6.2. Rear Lights
 - 1.6.3. Front Lights
- 1.7. Building the Front Axle
 - 1.7.1. Brake System and Wheel Rim
 - 1.7.2. Fork
 - 1.7.3. Handlebar





- 1.8. Building the Front Axle II
 - 1.8.1. Grips
 - 1.8.2. Brake Cables
 - 1.8.3. Instruments
- 1.9. Adding Details
 - 1.9.1. Refining the Main Body
 - 1.9.2. Adding the Muffler
 - 1.9.3. Adding the Pedals
- 1.10. Final Components
 - 1.10.1. Modeling the Windshield
 - 1.10.2. Modeling the Support
 - 1.10.3. Final Details



Are you convinced yet? This is the easiest and most convenient degree in Rhino Advanced Modeling that you will find in the academic market"

05 Methodology

This academic program offers students a different way of learning. Our methodology uses a cyclical learning approach: **Relearning**.

This teaching system is used, for example, in the most prestigious medical schools in the world, and major publications such as the **New England Journal of Medicine** have considered it to be one of the most effective.





“

Discover Relearning, a system that abandons conventional linear learning, to take you through cyclical teaching systems: a way of learning that has proven to be extremely effective, especially in subjects that require memorization"

Case Study to contextualize all content

Our program offers a revolutionary approach to developing skills and knowledge. Our goal is to strengthen skills in a changing, competitive, and highly demanding environment.

“

At TECH, you will experience a learning methodology that is shaking the foundations of traditional universities around the world”



You will have access to a learning system based on repetition, with natural and progressive teaching throughout the entire syllabus.



The student will learn to solve complex situations in real business environments through collaborative activities and real cases.

A learning method that is different and innovative

This TECH program is an intensive educational program, created from scratch, which presents the most demanding challenges and decisions in this field, both nationally and internationally. This methodology promotes personal and professional growth, representing a significant step towards success. The case method, a technique that lays the foundation for this content, ensures that the most current economic, social and professional reality is taken into account.

“*Our program prepares you to face new challenges in uncertain environments and achieve success in your career”*

The case method has been the most widely used learning system among the world's leading Information Technology schools for as long as they have existed. The case method was developed in 1912 so that law students would not only learn the law based on theoretical content. It consisted of presenting students with real-life, complex situations for them to make informed decisions and value judgments on how to resolve them. In 1924, Harvard adopted it as a standard teaching method.

What should a professional do in a given situation? This is the question that you are presented with in the case method, an action-oriented learning method. Throughout the course, students will be presented with multiple real cases. They will have to combine all their knowledge and research, and argue and defend their ideas and decisions.

Relearning Methodology

TECH effectively combines the Case Study methodology with a 100% online learning system based on repetition, which combines different teaching elements in each lesson.

We enhance the Case Study with the best 100% online teaching method: Relearning.

In 2019, we obtained the best learning results of all online universities in the world.

At TECH you will learn using a cutting-edge methodology designed to train the executives of the future. This method, at the forefront of international teaching, is called Relearning.

Our university is the only one in the world authorized to employ this successful method. In 2019, we managed to improve our students' overall satisfaction levels (teaching quality, quality of materials, course structure, objectives...) based on the best online university indicators.



In our program, learning is not a linear process, but rather a spiral (learn, unlearn, forget, and re-learn). Therefore, we combine each of these elements concentrically.

This methodology has trained more than 650,000 university graduates with unprecedented success in fields as diverse as biochemistry, genetics, surgery, international law, management skills, sports science, philosophy, law, engineering, journalism, history, and financial markets and instruments. All this in a highly demanding environment, where the students have a strong socio-economic profile and an average age of 43.5 years.

Relearning will allow you to learn with less effort and better performance, involving you more in your training, developing a critical mindset, defending arguments, and contrasting opinions: a direct equation for success.

From the latest scientific evidence in the field of neuroscience, not only do we know how to organize information, ideas, images and memories, but we know that the place and context where we have learned something is fundamental for us to be able to remember it and store it in the hippocampus, to retain it in our long-term memory.

In this way, and in what is called neurocognitive context-dependent e-learning, the different elements in our program are connected to the context where the individual carries out their professional activity.



This program offers the best educational material, prepared with professionals in mind:



Study Material

All teaching material is produced by the specialists who teach the course, specifically for the course, so that the teaching content is highly specific and precise.

These contents are then applied to the audiovisual format, to create the TECH online working method. All this, with the latest techniques that offer high quality pieces in each and every one of the materials that are made available to the student.



Classes

There is scientific evidence suggesting that observing third-party experts can be useful.

Learning from an Expert strengthens knowledge and memory, and generates confidence in future difficult decisions.



Practising Skills and Abilities

They will carry out activities to develop specific skills and abilities in each subject area. Exercises and activities to acquire and develop the skills and abilities that a specialist needs to develop in the context of the globalization that we are experiencing.



Additional Reading

Recent articles, consensus documents and international guidelines, among others. In TECH's virtual library, students will have access to everything they need to complete their course.





Case Studies

Students will complete a selection of the best case studies chosen specifically for this program. Cases that are presented, analyzed, and supervised by the best specialists in the world.



Interactive Summaries

The TECH team presents the contents attractively and dynamically in multimedia lessons that include audio, videos, images, diagrams, and concept maps in order to reinforce knowledge.

This exclusive educational system for presenting multimedia content was awarded by Microsoft as a "European Success Story".



Testing & Retesting

We periodically evaluate and re-evaluate students' knowledge throughout the program, through assessment and self-assessment activities and exercises, so that they can see how they are achieving their goals.



06

Certificate

The Postgraduate Certificate in Advanced Modeling in Rhino guarantees students, in addition to the most rigorous and up-to-date education, access to a Postgraduate Certificate issued by TECH Technological University.



“

Successfully complete this program and receive your university qualification without having to travel or fill out laborious paperwork”

This **Postgraduate Certificate in Advanced Modeling in Rhino** contains the most complete and up-to-date program on the market.

After the student has passed the assessments, they will receive their corresponding **Postgraduate Certificate** issued by **TECH Technological University** via tracked delivery*.

The certificate issued by **TECH Technological University** will reflect the qualification obtained in the Postgraduate Certificate, and meets the requirements commonly demanded by labor exchanges, competitive examinations, and professional career evaluation committees.

Title: **Postgraduate Certificate in Advanced in Rhino Modeling**

Official N° of Hours: **150 h.**



*Apostille Convention. In the event that the student wishes to have their paper certificate issued with an apostille, TECH EDUCATION will make the necessary arrangements to obtain it, at an additional cost.

future
health confidence people
education information tutors
guarantee accreditation teaching
institutions technology learning
community commitment
personalized service innovation
knowledge present
online training
development language
classroom



Postgraduate Certificate Advanced Modeling in Rhino

- » Modality: **online**
- » Duration: **6 weeks**
- » Certificate: **TECH Technological University**
- » Dedication: **16h/week**
- » Schedule: **at your own pace**
- » Exams: **online**

Postgraduate Certificate Advanced Modeling in Rhino

