

Postgraduate Certificate World Regional Geography





Postgraduate Certificate World Regional Geography

- » Modality: online
- » Duration: 6 weeks
- » Certificate: TECH Global University
- » Credits: 6 ECTS
- » Schedule: at your own pace
- » Exams: online

Website: www.techtute.com/us/geography-history/postgraduate-certificate/world-regional-geography

Index

01

Introduction

p. 4

02

Objectives

p. 8

03

Structure and Content

p. 12

04

Methodology

p. 16

05

Certificate

p. 24

01

Introduction

This intensive program has been developed by vastly experienced professionals in the field to specialize students in world regional geography. This program journeys through Africa, America, Europe, Asia and Oceania, their morphology and activity, to update student knowledge based on the latest scientific evidence provided by the age of satellites and technological precision instruments.





The Postgraduate Certificate in World Regional Geography is aimed at those who are interested in learning more about the world around us"

This program in World Regional Geography addresses the different territories of geography while ensuring students have a working knowledge of various geospatial techniques.

Urban environments, sustainability or migratory movements, are flows of human development that are circumscribed to their regions in specific ways, thus affecting the morphology of the territories themselves. Cultural geography, sensitive to the technology mentioned above, is key at a time when digital technologies permeate all spheres of our lives and substantially change our communication and geographical positioning in the world.

This program is aimed at those interested in attaining a higher level of knowledge of world and European geography. Take advantage of the opportunity to take this educational program in a 100% online format, without having to give up obligations, and making it easy to continue studying. Update your knowledge and obtain your Postgraduate Certificate to continue growing both personally and professionally.

This **Postgraduate Certificate in World Regional Geography** contains the most complete and up-to-date program on the market. The most important features include:

- ▶ 100 simulated scenarios presented by experts in geography
- ▶ Its graphic, schematic and practical contents with which they are conceived, provide scientific and practical information on the history of the world
- ▶ News on the latest discoveries in the history of our civilizations
- ▶ Contains practical exercises where the self-evaluation process can be carried out to improve learning
- ▶ Interactive learning system based on the case method and its application to real practice
- ▶ Complementary theoretical lessons, questions to the expert, debate forums on controversial topics, and individual reflection assignments
- ▶ Content that is accessible from any fixed or portable device with an Internet connection



Gain in-depth knowledge of today's world from a geographical perspective and from the hand of professionals in the sector"

“

This 100% online Postgraduate Certificate in World Regional Geography will allow you to update your knowledge of humanity in a practical way, without sacrificing the maximum scientific and academic rigor”

The teaching staff includes professionals in geography and history, who pour into this program the experience of their work, in addition to recognized specialists belonging to reference societies and prestigious universities.

Thanks to its multimedia content developed with the latest educational technology, they will allow the professional a situated and contextual learning, that is to say, a simulated environment that will provide an immersive learning programmed to train in real situations.

The program design is based on Problem-Based Learning, whereby students must try to solve the different professional practice situations that arise throughout the course. To that end, they will be assisted by an innovative, interactive video system created by renowned experts in geography who have extensive teaching experience.

Make the most of the latest educational technology to get up to date on world regional geography without leaving the home.

Discover the reality of the world and human behavior with the utmost academic rigor.



02 Objectives

This program is aimed at those interested in conducting a detailed study of the world around us, orography, geopolitics or human behavior in the distribution and activity of human populations. Our students will update on the trends in population development, studying issues that constitute the forefront of the discipline in depth.





“

*Reach the level of knowledge
you desire and master
geography at a global scale”*

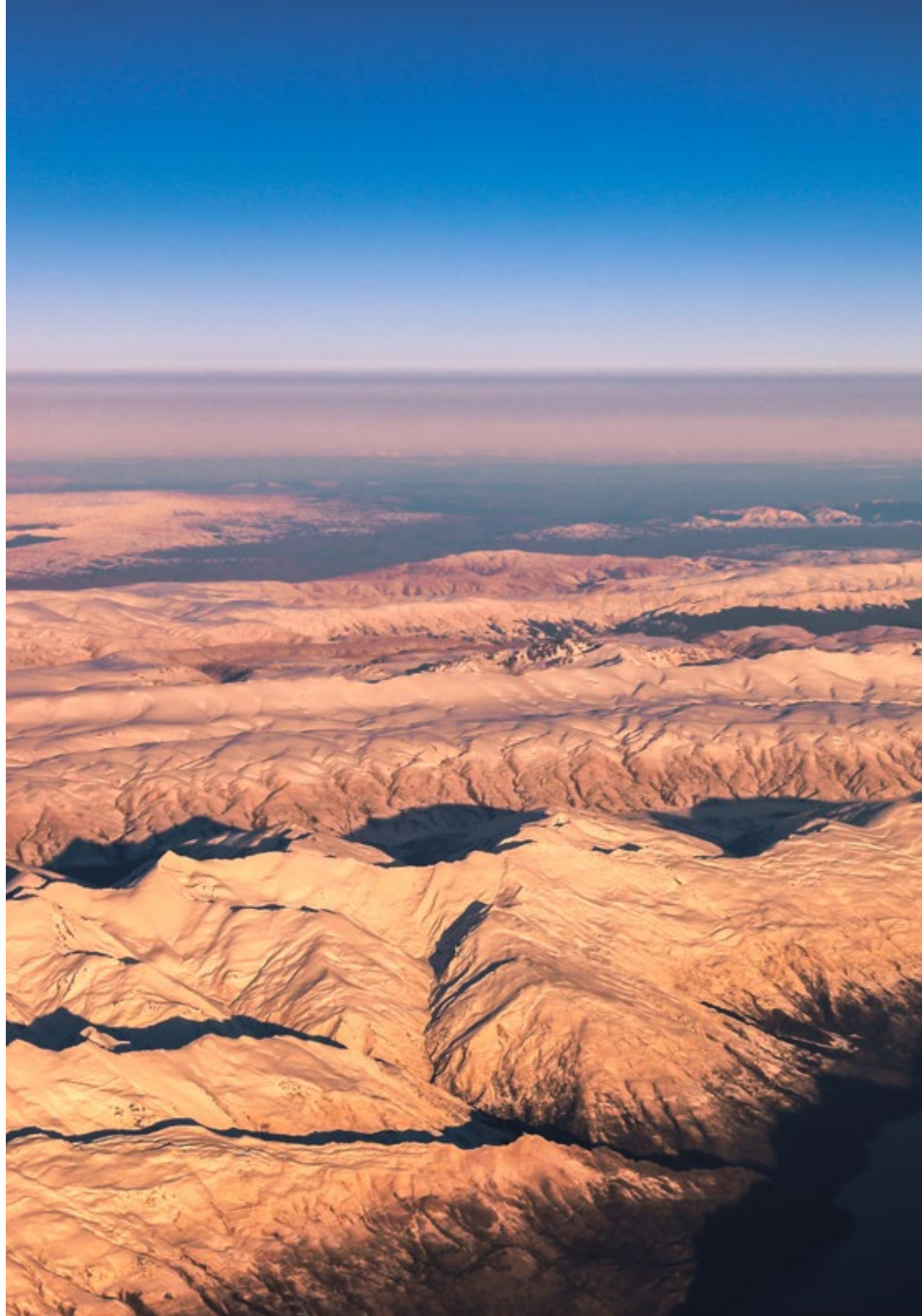


General Objective

- Attain the level of knowledge required to master world geography at the physical and human levels from a global perspective, with special emphasis on the European context and a vision of the urban organization of territories

“

A boost to your CV that will give you the competitiveness of the best prepared professionals in the labor market"





Specific Objectives

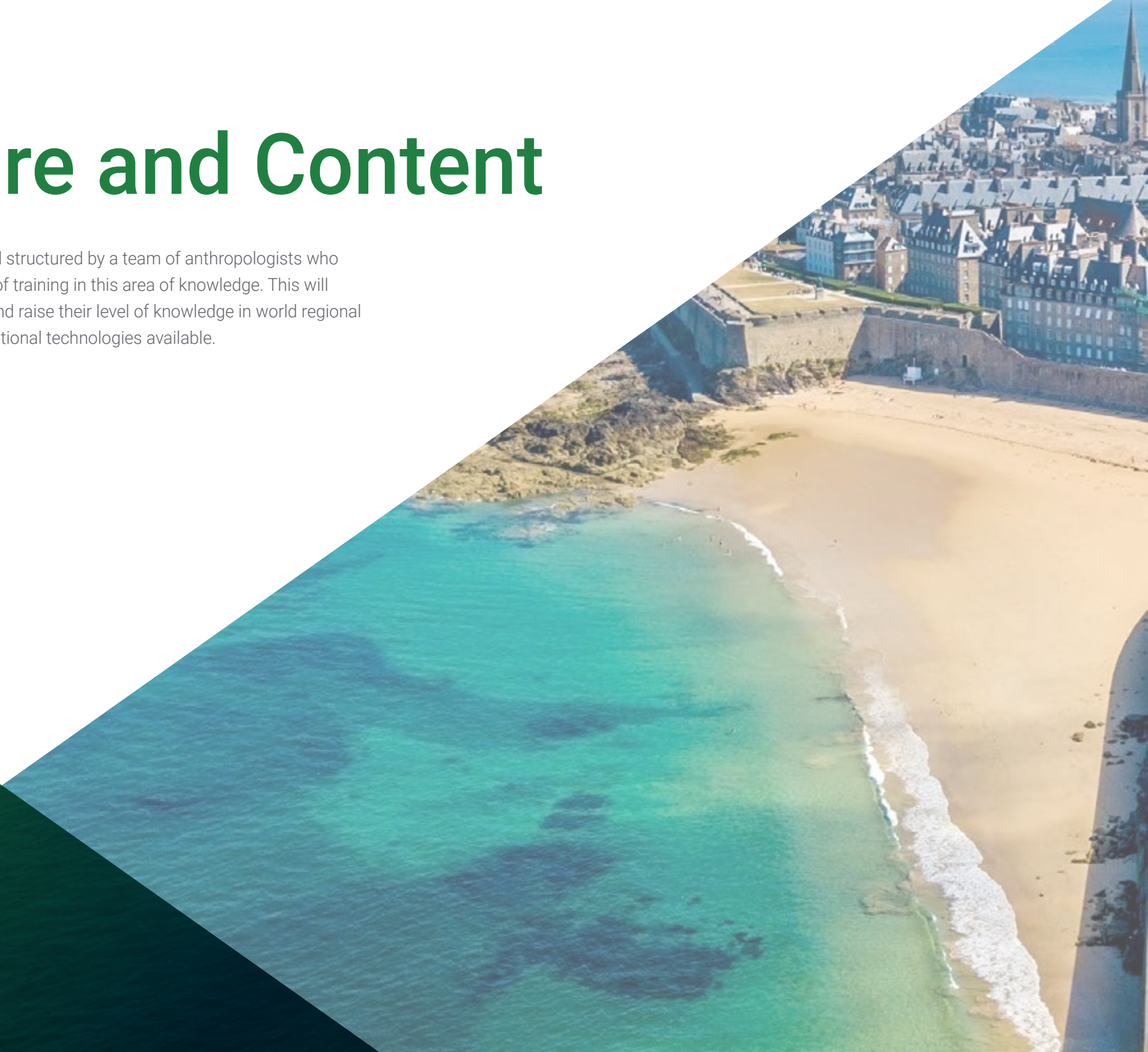
Module 1. World Regional Geography

- Analyze and interpret the geographic reality of the world today
- Explain the importance of the physical environment in the configuration and development of a country and in the configuration of a regional demographic
- Discuss past dynamics and processes that affect the current configuration of large regional demographics
- Characterize the geographical peculiarities of regional spaces of underdeveloped and emerging countries

03

Structure and Content

The content has been designed and structured by a team of anthropologists who are aware of the current relevance of training in this area of knowledge. This will enrich students on a human level and raise their level of knowledge in world regional geography through the latest educational technologies available.





“

*This Postgraduate Certificate
in World Regional Geography
contains the most complete
and up-to-date educational
program on the market”*

Module 1. World Regional Geography

- 1.1. The Evolution of Geographical Space
 - 1.1.1. The Conception of Geographical Space
 - 1.1.2. Types of Space
 - 1.1.3. The Complexity and Diversity of a Constantly Evolving Terrestrial Space
- 1.2. Structural Developmental Characteristics
 - 1.2.1. Developing Countries
 - 1.2.2. Characteristics of Developing Countries
- 1.3. North America
 - 1.3.1. Political-Territorial Reality
 - 1.3.2. Economic Reality
- 1.4. Underdeveloped Countries
 - 1.4.1. Concept of Underdevelopment
 - 1.4.2. Characteristics of Underdeveloped Countries
- 1.5. Russia and the Commonwealth of Independent States (CIS)
 - 1.5.1. The Role of the CIS
 - 1.5.2. CIS Organization

“ A unique, key, and decisive educational experience to boost your professional development ”



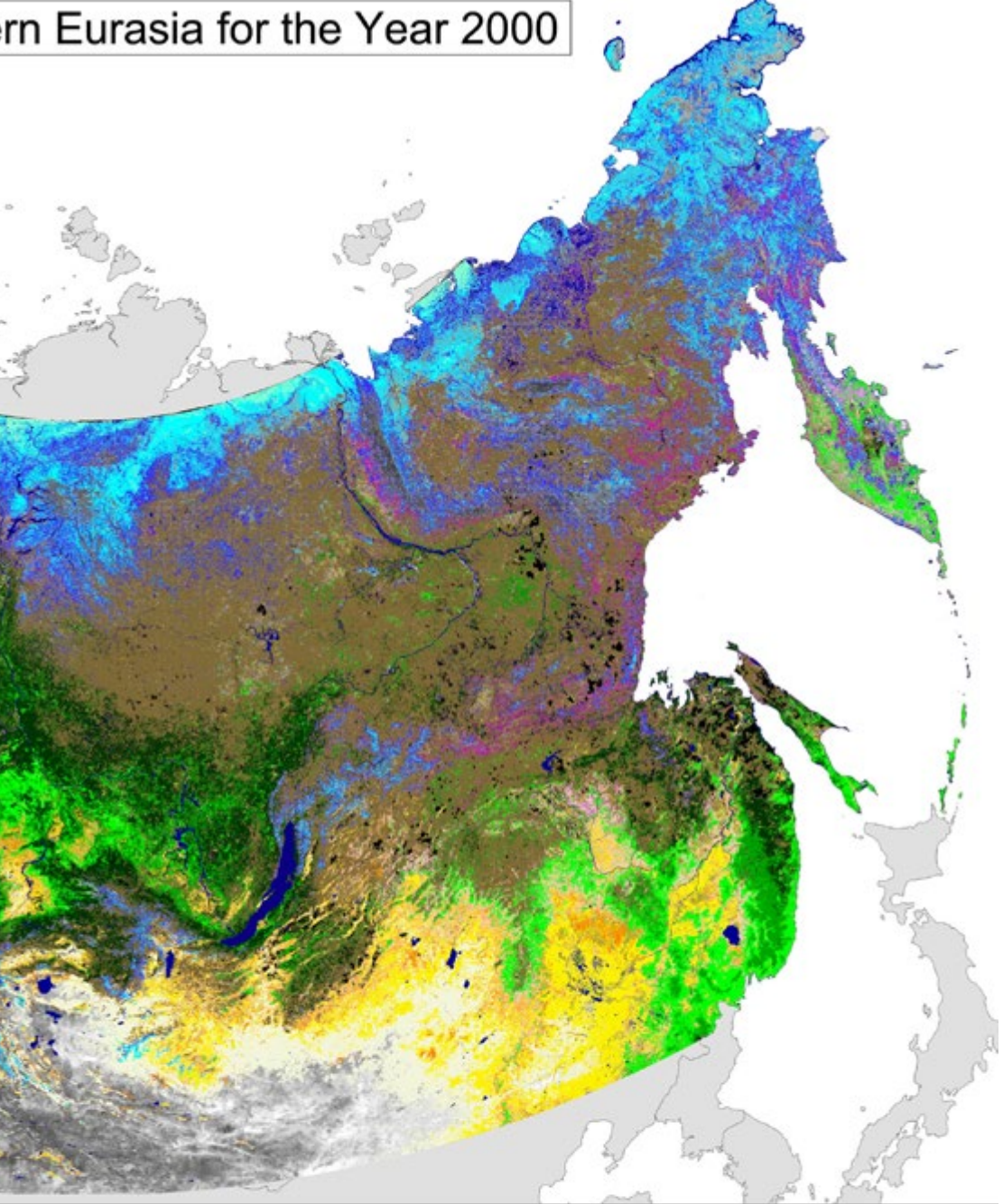
Legend

<p>WETLANDS / ВОДНО-БОЛОТНЫЕ КОМПЛЕКСЫ</p> <ul style="list-style-type: none"> Wetland Forest Wetland Shrub Wetland Grass Wetland Tundra 	<p>WETLANDS / ВОДНО-БОЛОТНЫЕ КОМПЛЕКСЫ</p> <ul style="list-style-type: none"> Wetland Forest Wetland Shrub Wetland Grass Wetland Tundra 	<p>WETLANDS / ВОДНО-БОЛОТНЫЕ КОМПЛЕКСЫ</p> <ul style="list-style-type: none"> Wetland Forest Wetland Shrub Wetland Grass Wetland Tundra 	<p>WETLANDS / ВОДНО-БОЛОТНЫЕ КОМПЛЕКСЫ</p> <ul style="list-style-type: none"> Wetland Forest Wetland Shrub Wetland Grass Wetland Tundra
------------------------------------------------------------------------------------------------------------------------------------------------------------------------------------------	------------------------------------------------------------------------------------------------------------------------------------------------------------------------------------------	------------------------------------------------------------------------------------------------------------------------------------------------------------------------------------------	------------------------------------------------------------------------------------------------------------------------------------------------------------------------------------------

Map Info

This map of Northern Eurasia's land cover has been created in partnership with Russian Academy of Sciences' Centre for Earth Observation and Remote Sensing. The map is based on data from the Earth Observation satellite SPOT 4, L-band sensor, and is derived from VEGETATION data. The map shows the water content of surface, directional reflectance, and other parameters.

Настоящая карта типов земного покрова Северной Евразии была создана в партнерстве с Центром Европейской Академии Наук в сотрудничестве с Центром Российской Академии Наук. Карта получена в результате обработки данных с спутника SPOT 4, инструмента классификации основных типов земного покрова с использованием данных, характеризующих фенологическую и анізотропные свойства отражения земной поверхности.



- 1.6. China
 - 1.6.1. Territorial Organization of the People's Republic of China
 - 1.6.2. From Socialism to Capitalism
 - 1.6.3. China in the New Economic World Order
- 1.7. Latin America
 - 1.7.1. Introduction to the Economic Reality in Latin America
 - 1.7.2. Characteristics of the Expansionary Stage Growth Model
 - 1.7.3. Crisis, Adjustment and Structural Reforms in the 1980s
 - 1.7.4. Difficulties in Achieving Stable Economic Growth
- 1.8. Sub-Saharan Africa
 - 1.8.1. Subregions in Sub-Saharan Africa
 - 1.8.2. Countries Most in Need
- 1.9. Arab-Islamic Countries
 - 1.9.1. States and Territories
 - 1.9.2. Institutional Shortcomings
 - 1.9.3. Islam and Market Economy
- 1.10. Current Geographical Reality
 - 1.10.1. Spatial Imbalances and Inequalities

Information
 developed at European Commission's Joint Research Centre for Forest Ecology and Productivity. The mapping project with use of data obtained by the VEGETATION and cover classes have been identified with series of indices, in order to characterise phenology of vegetation, distance properties and snow duration.
 Карта создана Объединенным Исследовательским Центром по Проблемам Экологии и Продуктивности в рамках проекта Global Land Cover 2000 по данным спутника VEGETATION. Метод создания карты включал использование набора улучшенных продуктов динамику растительности, уровень влагоудержания, а также длительность залегания снежного покрова.

Contact Details

<p>Dr. Sergey A. Bartalev Boreal Ecosystems Monitoring Laboratory Space Research Institute Russian Academy of Sciences 84/32 Profsoyuznaya str. Moscow, 117997, Russia E-mail: bartalev@icp902.iki.rssi.ru Fax: 007 095 913 30 40</p>	<p>Acad. Alexander S. Isaev and Dr. Dmitry V. Ershov Centre for Forest Ecology and Productivity Russian Academy of Sciences 84/32 Profsoyuznaya str. Moscow, 117997, Russia E-mails: isaev@cepl.rssi.ru; ershov@is.rssi.ru Fax: 007 095332 29 17</p>	<p>Dr. Alan S. Belward Global Vegetation Monitoring Institute for Environment and Sustainability, Joint Research Centre, Ispra, 21020, Italy email : alan.belward@jrc. fax : +39-0332-789073</p>
------------------------------------------------------------------------------------------------------------------------------------------------------------------------------------------------------------------------------------------------------------------------------------------------------------------------------------------------------------------------------------------	------------------------------------------------------------------------------------------------------------------------------------------------------------------------------------------------------------------------------------------------------------------------------------------------------------------------------------------------------------------------------------------------------------------------------	-----------------------------------------------------------------------------------------------------------------------------------------------------------------------------------------------------------------------------------------------------------------------------------------------------------------------------------------------------

Digital datasets can be downloaded from : <http://www.gvm.jrc.it/glc2000>
 Developed as part of the Global Land Cover 2000 project, coordinated by the Global Vegetation Monitoring Unit of the European Commission Joint Research Centre



04

Methodology

This academic program offers students a different way of learning. Our methodology uses a cyclical learning approach: **Relearning**.

This teaching system is used, for example, in the most prestigious medical schools in the world, and major publications such as the **New England Journal of Medicine** have considered it to be one of the most effective.





“

Discover Relearning, a system that abandons conventional linear learning, to take you through cyclical teaching systems: a way of learning that has proven to be extremely effective, especially in subjects that require memorization"

Case Study to contextualize all content

Our program offers a revolutionary approach to developing skills and knowledge. Our goal is to strengthen skills in a changing, competitive, and highly demanding environment.

“

At TECH, you will experience a learning methodology that is shaking the foundations of traditional universities around the world”



You will have access to a learning system based on repetition, with natural and progressive teaching throughout the entire syllabus.



A learning method that is different and innovative

This TECH program is an intensive educational program, created from scratch, which presents the most demanding challenges and decisions in this field, both nationally and internationally. This methodology promotes personal and professional growth, representing a significant step towards success. The case method, a technique that lays the foundation for this content, ensures that the most current economic, social and professional reality is taken into account.

“*Our program prepares you to face new challenges in uncertain environments and achieve success in your career”*

The student will learn to solve complex situations in real business environments through collaborative activities and real cases.

The case method has been the most widely used learning system among the world's leading Geography and History schools for as long as they have existed. The case method was developed in 1912 so that law students would not only learn the law based on theoretical content. It consisted of presenting students with real-life, complex situations for them to make informed decisions and value judgments on how to resolve them. In 1924, Harvard adopted it as a standard teaching method.

What should a professional do in a given situation? This is the question we face in the case method, an action-oriented learning method. Throughout the program, students will be presented with multiple real cases. They will have to combine all their knowledge and research, and argue and defend their ideas and decisions.

Relearning Methodology

TECH effectively combines the Case Study methodology with a 100% online learning system based on repetition, which combines 8 different teaching elements in each lesson.

We enhance the Case Study with the best 100% online teaching method: Relearning.

In 2019, we obtained the best learning results of all online universities in the world.

At TECH, you will learn using a cutting-edge methodology designed to train the executives of the future. This method, at the forefront of international teaching, is called Relearning.

Our university is the only one in the world authorized to employ this successful method. In 2019, we managed to improve our students' overall satisfaction levels (teaching quality, quality of materials, course structure, objectives...) based on the best online university indicators.



In our program learning is not a linear process, but rather a spiral (learn, unlearn, forget, and re-learn). Therefore, we combine each of these elements concentrically.

With this methodology, we have trained more than 650,000 university graduates with unprecedented success in fields as diverse as biochemistry, genetics, surgery, international law, management skills, sports science, philosophy, law, engineering, journalism, history, markets, and financial instruments. All this in a highly demanding environment, where the students have a strong socio-economic profile and an average age of 43.5 years.

Relearning will allow you to learn with less effort and better performance, involving you more in your training, developing a critical mindset, defending arguments, and contrasting opinions: a direct equation for success.

From the latest scientific evidence in the field of neuroscience, not only do we know how to organize information, ideas, images and memories, but we know that the place and context where we have learned something is fundamental for us to be able to remember it and store it in the hippocampus, to retain it in our long-term memory.

In this way, and in what is called neurocognitive context-dependent e-learning, the different elements in our program are connected to the context where the individual carries out their professional activity.



This program offers the best educational material, prepared with professionals in mind:



Study Material

All teaching material is produced by the specialists who teach the course, specifically for the course, so that the teaching content is highly specific and precise.

These contents are then adapted in audiovisual format, to create the TECH online working method. All this, with the latest techniques that offer high quality pieces in each and every one of the materials that are made available to the student.



Classes

There is scientific evidence suggesting that observing third-party experts can be useful.

Learning from an Expert strengthens knowledge and memory, and generates confidence in future difficult decisions.



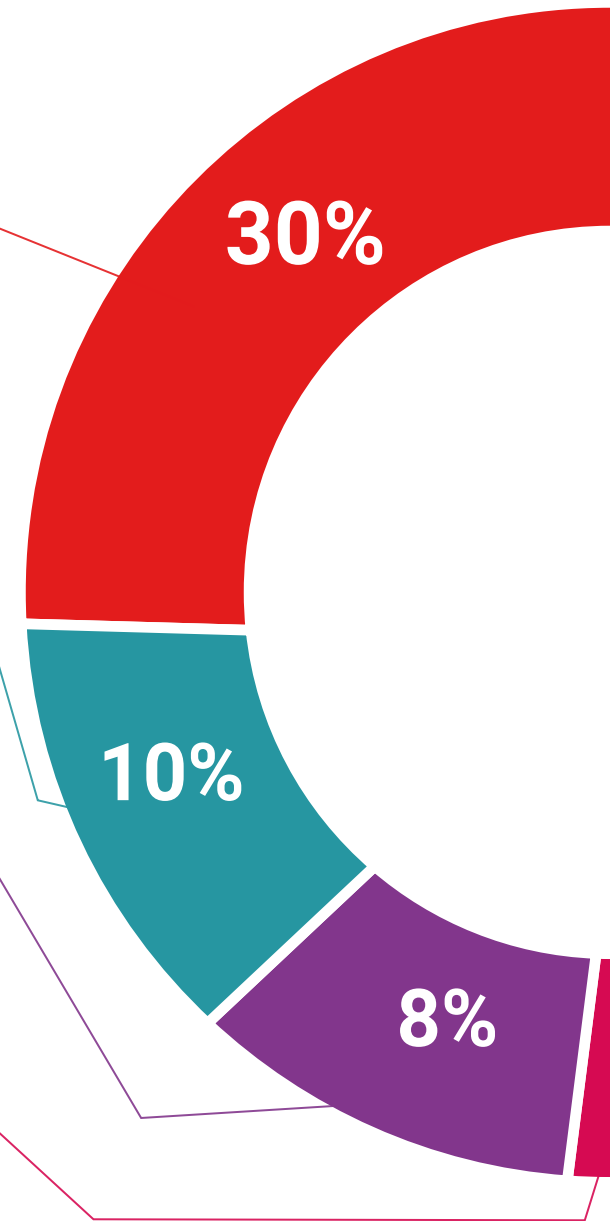
Practising Skills and Abilities

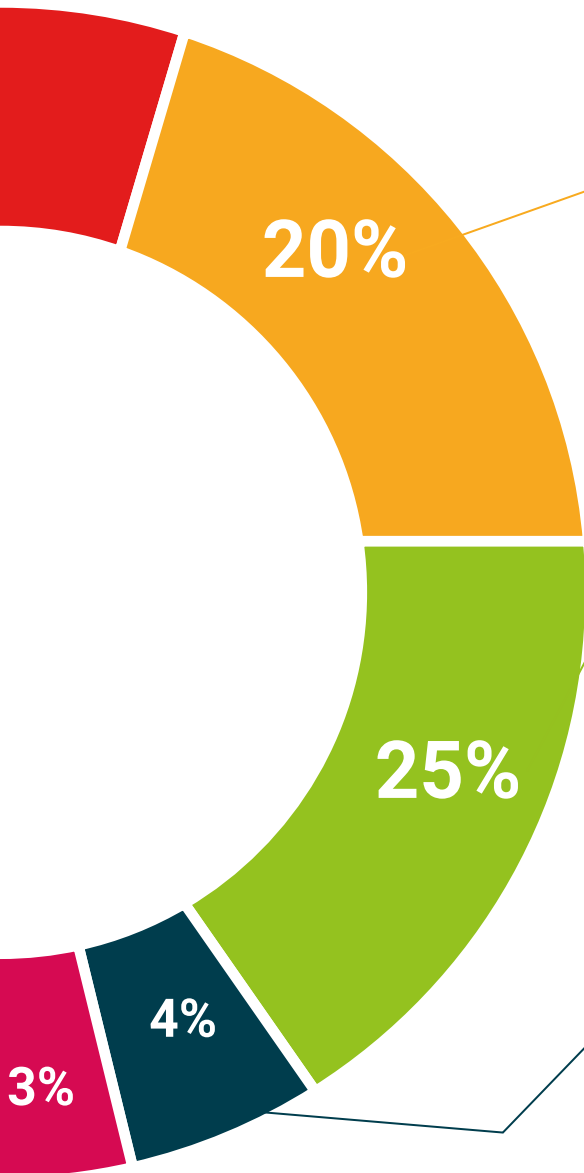
They will carry out activities to develop specific skills and abilities in each subject area. Exercises and activities to acquire and develop the skills and abilities that a specialist needs to develop in the context of the globalization that we are experiencing.



Additional Reading

Recent articles, consensus documents and international guidelines, among others. In TECH's virtual library, students will have access to everything they need to complete their course.





Case Studies

Students will complete a selection of the best case studies chosen specifically for this program. Cases that are presented, analyzed, and supervised by the best specialists in the world.



Interactive Summaries

The TECH team presents the contents attractively and dynamically in multimedia lessons that include audio, videos, images, diagrams, and concept maps in order to reinforce knowledge.

This exclusive educational system for presenting multimedia content was awarded by Microsoft as a "European Success Story".



Testing & Retesting

We periodically evaluate and re-evaluate students' knowledge throughout the program, through assessment and self-assessment activities and exercises, so that they can see how they are achieving their goals.



05 Certificate

The Postgraduate Certificate in World Regional Geography guarantees students, in addition to the most rigorous and up-to-date education, access to a Postgraduate Certificate issued by TECH Global University.



“

Add to your qualifications a Postgraduate Certificate in World Regional Geography: A highly qualified added value for any professional in the field”

This program will allow you to obtain your **Postgraduate Certificate in World Regional Geography** endorsed by **TECH Global University**, the world's largest online university.

TECH Global University is an official European University publicly recognized by the Government of Andorra ([official bulletin](#)). Andorra is part of the European Higher Education Area (EHEA) since 2003. The EHEA is an initiative promoted by the European Union that aims to organize the international training framework and harmonize the higher education systems of the member countries of this space. The project promotes common values, the implementation of collaborative tools and strengthening its quality assurance mechanisms to enhance collaboration and mobility among students, researchers and academics.

This **TECH Global University** title is a European program of continuing education and professional updating that guarantees the acquisition of competencies in its area of knowledge, providing a high curricular value to the student who completes the program.

Title: **Postgraduate Certificate in World Regional Geography**

Modality: **online**

Duration: **6 weeks**

Accreditation: **6 ECTS**



future
health confidence people
education information tutors
guarantee accreditation teaching
institutions technology learning
community commitment
personalized service innovation
knowledge present
development language
virtual classroom



Postgraduate Certificate World Regional Geography

- » Modality: online
- » Duration: 6 weeks
- » Certificate: TECH Global University
- » Credits: 6 ECTS
- » Schedule: at your own pace
- » Exams: online

Postgraduate Certificate World Regional Geography