

# Postgraduate Certificate Planning of Social Intervention





## Postgraduate Certificate Planning of Social Intervention

- » Modality: online
- » Duration: 6 weeks
- » Certificate: TECH Global University
- » Credits: 6 ECTS
- » Schedule: at your own pace
- » Exams: online

Website: [www.techtitute.com/us/humanities/postgraduate-certificate/planning-social-intervention](http://www.techtitute.com/us/humanities/postgraduate-certificate/planning-social-intervention)

# Index

01

Introduction

---

*p. 4*

02

Objectives

---

*p. 8*

03

Structure and Content

---

*p. 12*

04

Methodology

---

*p. 16*

05

Certificate

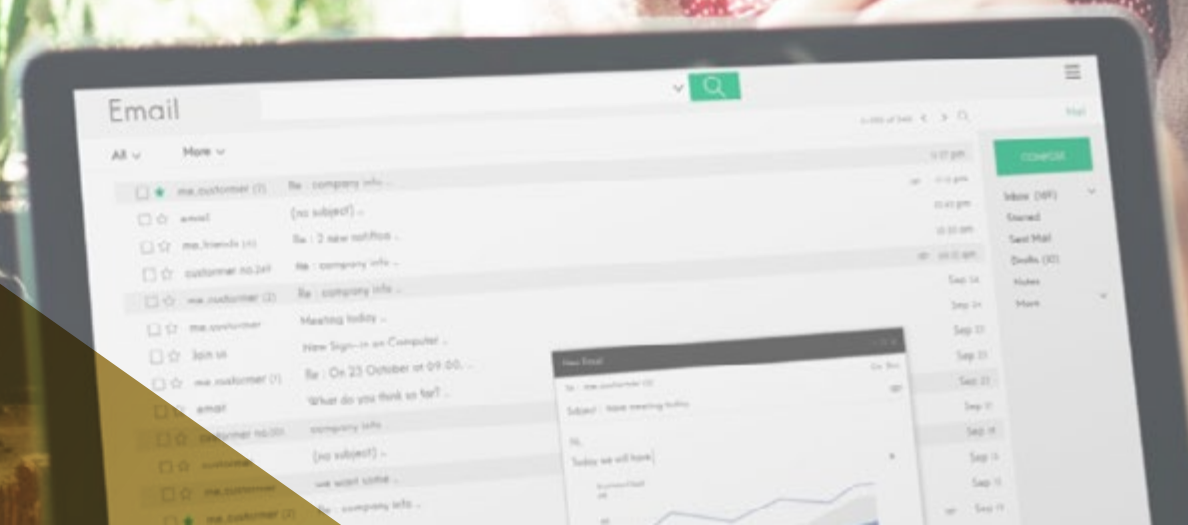
---

*p. 24*

# 01

# Introduction

Nowadays, the planning of Social Intervention has become an essential area to address social problems efficiently and effectively. That is why this degree is of great importance for all those professionals who wish to consolidate their update in this area. In this sense, the program aims to provide students with the knowledge and tools necessary to plan, design and manage social projects, as well as to evaluate their impact on society. In addition, the degree is taught 100% online, with the pedagogical methodology of Relearning and a great flexibility to organize academic resources, allowing students to adapt their preparation to their needs and schedules.







“

*Develop the main methodologies in Social Planning and launch your career with TECH”*

The planning of Social Intervention is a fundamental tool for the development of effective and sustainable social policies, being of vital importance to address the social problems that affect the general population. That is why this Postgraduate Certificate provides the necessary tools to master and apply Social Intervention in various contexts, always from a critical and reflective perspective.

This way, topics such as the identification of needs and resources, the development and implementation of social projects and the evaluation of social impact are addressed. In addition, current social policies and emerging trends in Social Planning are examined. But the best thing is that this degree is taught 100% online, with a pedagogical methodology based on Relearning, which allows a more effective and flexible preparation for the student.

Through this methodology, the most important concepts are reiterated throughout the syllabus, achieving an organic and lasting learning. In addition, it encourages active student participation and offers great flexibility to organize academic resources according to individual needs.

The **Postgraduate Certificate in Planning of Social Intervention** contains the most complete and up-to-date program on the market. The most important features include:

- ♦ Development of case studies presented by experts in Planning of Social Intervention
- ♦ The graphic, schematic, and practical contents with which they are created, provide practical information on the disciplines that are essential for professional practice
- ♦ Practical exercises where self-assessment can be used to improve learning
- ♦ Its special emphasis on innovative methodologies
- ♦ Theoretical lessons, questions to the expert, debate forums on controversial topics, and individual reflection assignments
- ♦ Content that is accessible from any fixed or portable device with an Internet connection



*Access the most complete  
multimedia library you will find on  
Planning of Social Intervention”*



*Addresses the meaning of  
Interdisciplinarity or Intersectoriality  
in Social Intervention"*

The program's teaching staff includes professionals from sector who contribute their work experience to this educational program, as well as renowned specialists from leading societies and prestigious universities.

Its multimedia content, developed with the latest educational technology, will provide the professional with situated and contextual learning, i.e., a simulated environment that will provide an immersive education programmed to learn in real situations.

The design of this program focuses on Problem-Based Learning, by means of which the professional must try to solve the different professional practice situations that are presented throughout the academic course. For this purpose, the student will be assisted by an innovative interactive video system created by renowned experts.

*Position yourself as a leading  
sociologist with a unique  
online degree in the market.*

*Get up to date in a booming  
sector and strengthen your  
sociological research.*



# 02 Objectives

TECH has established a series of specific objectives for the Postgraduate Certificate in Planning of Social Intervention, with the sole purpose of ensuring that graduates acquire practical skills and a broad vision to direct their professional efforts. Always based on the latest research, the program covers a wide range of topics ranging from techniques and analysis for planning these processes to the main theoretical perspectives.







“

*Master the different stages of Planning of Social Intervention achieving the objectives of the degree"*



## General Objectives

---

- ♦ Explore applied sociology in different fields of research, organization and social change
- ♦ Analyze the current sociological currents to identify spaces for intervention and action
- ♦ Make use of the most rigorous methods and techniques in the field of applied sociology

“

*Determine the importance of participatory designs thanks to the new skills you will develop”*







## Specific Objectives

- ♦ To understand the meaning of interdisciplinarity, intersectorality, sustainability and participation in social intervention
- ♦ To know the main methodologies of social planning
- ♦ To assume an ethical commitment in the planning of social intervention

# 03

## Structure and Content

The didactic materials of this program have been designed following the educational methodology of Relearning, which is used in TECH to ensure that the student tackles the workload in an effective manner. Because Social Intervention is a broad and complex field of study, the most important concepts are presented throughout the syllabus in a repetitive manner, resulting in more beneficial and natural learning for the student. This also saves many hours of study time, allowing the student to spend time exploring complementary topics of interest.







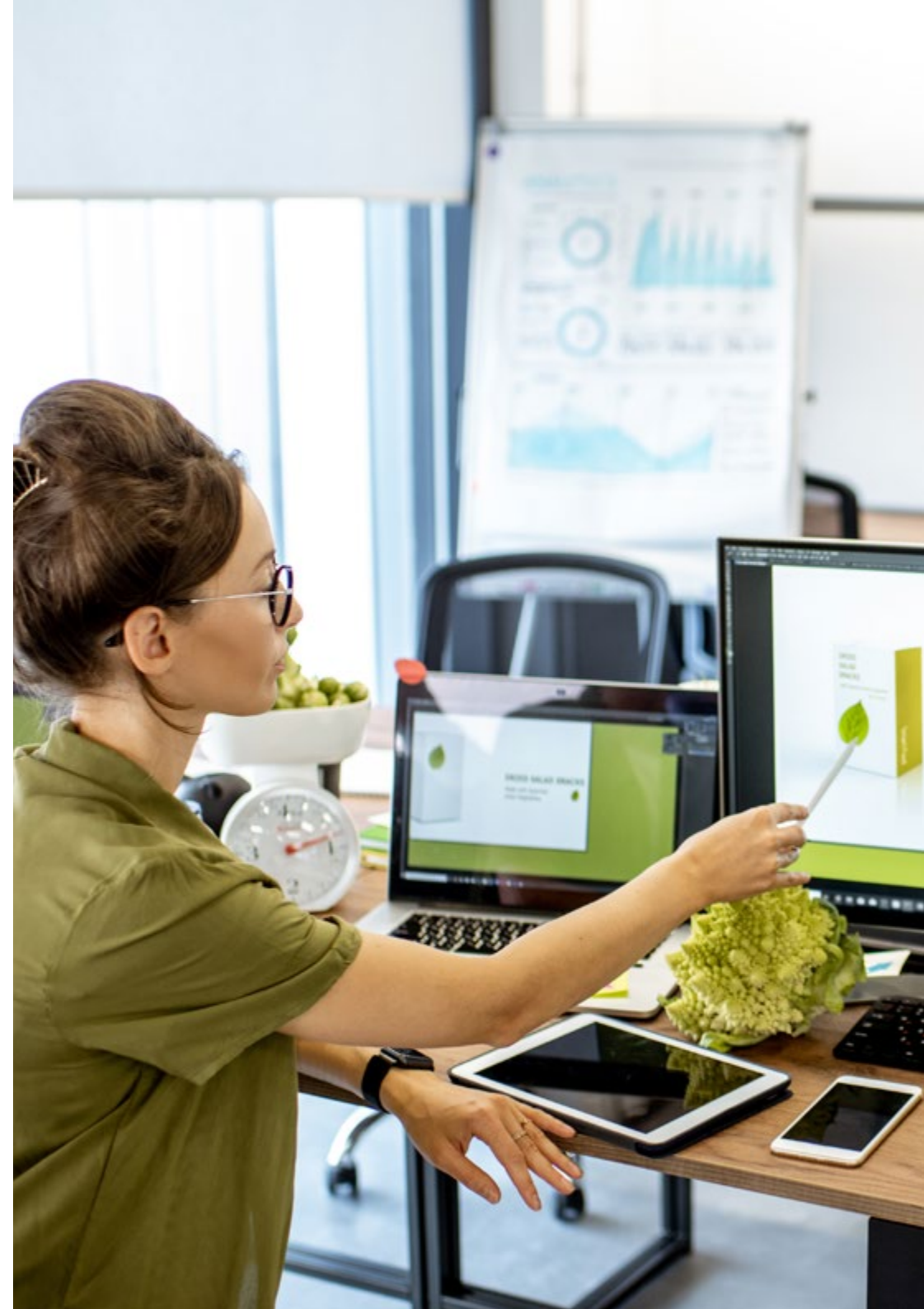
“

*A highly dynamic curriculum packed with interactive resources on Social Intervention”*



## Module 1. Planning of Social Intervention

- 1.1. The Role Played by Sociology in Social Intervention
  - 1.1.1. Object and Purposes
  - 1.1.2. Interdisciplinarity
  - 1.1.3. Main Theoretical Perspectives
- 1.2. The Agents of Social Intervention
  - 1.2.1. Occupations
  - 1.2.2. Levels
  - 1.2.3. Features
- 1.3. Planning Stages
  - 1.3.1. Application Contexts
  - 1.3.2. Diagnosis and Prognosis
  - 1.3.3. Initial and Emergent Design
- 1.4. Participatory Design
  - 1.4.1. Importance of the Participatory Design
  - 1.4.2. Participatory – Action Research
  - 1.4.3. Participatory Process
- 1.5. Tools and Techniques for Social intervention Planning
  - 1.5.1. Planning of Social Intervention
  - 1.5.2. Delphi Method
  - 1.5.3. Participatory Techniques for Design
- 1.6. The Evaluation of the Social Intervention
  - 1.6.1. Importance of Assessment
  - 1.6.2. Types of Assessments
  - 1.6.3. Typologies of Indicators
- 1.7. The Logical Framework Approach and The Cooperation Projects
  - 1.7.1. Scope Mapping
  - 1.7.2. Person-Centered Care
  - 1.7.3. Needs Assessment





- 1.8. Quality Indicators
  - 1.8.1. Importance of Indicators
  - 1.8.2. Indicators in Design
  - 1.8.3. Plan and Implementation Indicators
- 1.9. Cross-Cutting Keys in Design
  - 1.9.1. What are Cross-Cutting Keys
  - 1.9.1. Design of Plans, Programs and Projects
  - 1.9.2. Theory of a Program: Change and Action
- 1.10. Application of the Community Psychology and Sociology in the Study of the Intervention Sectors
  - 1.10.1. Old Age.
  - 1.10.2. Family and Minors
  - 1.10.3. Cultural Conflicts

“

*A decisive specialization that will only require 180 hours of your time and can be combined with all your obligations”*

04

# Methodology

This academic program offers students a different way of learning. Our methodology uses a cyclical learning approach: **Relearning**.

This teaching system is used, for example, in the most prestigious medical schools in the world, and major publications such as the **New England Journal of Medicine** have considered it to be one of the most effective.





“

*Discover Relearning, a system that abandons conventional linear learning, to take you through cyclical teaching systems: a way of learning that has proven to be extremely effective, especially in subjects that require memorization"*

## Case Study to contextualize all content

Our program offers a revolutionary approach to developing skills and knowledge. Our goal is to strengthen skills in a changing, competitive, and highly demanding environment.

“

*At TECH, you will experience a learning methodology that is shaking the foundations of traditional universities around the world"*



*You will have access to a learning system based on repetition, with natural and progressive teaching throughout the entire syllabus.*





*The student will learn to solve complex situations in real business environments through collaborative activities and real cases.*

### A learning method that is different and innovative

This TECH program is an intensive educational program, created from scratch, which presents the most demanding challenges and decisions in this field, both nationally and internationally. This methodology promotes personal and professional growth, representing a significant step towards success. The case method, a technique that lays the foundation for this content, ensures that the most current economic, social and professional reality is taken into account.

“*Our program prepares you to face new challenges in uncertain environments and achieve success in your career*”

The case method has been the most widely used learning system among the world's leading Humanities schools for as long as they have existed. The case method was developed in 1912 so that law students would not only learn the law based on theoretical content. It consisted of presenting students with real-life, complex situations for them to make informed decisions and value judgments on how to resolve them. In 1924, Harvard adopted it as a standard teaching method.

What should a professional do in a given situation? This is the question we face in the case method, an action-oriented learning method. Throughout the program, the studies will be presented with multiple real cases. They will have to combine all their knowledge and research, and argue and defend their ideas and decisions.

## Relearning Methodology

TECH effectively combines the Case Study methodology with a 100% online learning system based on repetition, which combines 8 different teaching elements in each lesson.

We enhance the Case Study with the best 100% online teaching method: Relearning.

*In 2019, we obtained the best learning results of all online universities in the world.*

At TECH you will learn using a cutting-edge methodology designed to train the executives of the future. This method, at the forefront of international teaching, is called Relearning.

Our university is the only one in the world authorized to employ this successful method. In 2019, we managed to improve our students' overall satisfaction levels (teaching quality, quality of materials, course structure, objectives...) based on the best online university indicators.



In our program, learning is not a linear process, but rather a spiral (learn, unlearn, forget, and re-learn). Therefore, we combine each of these elements concentrically. With this methodology we have trained more than 650,000 university graduates with unprecedented success in fields as diverse as biochemistry, genetics, surgery, international law, management skills, sports science, philosophy, law, engineering, journalism, history, markets, and financial instruments. All this in a highly demanding environment, where the students have a strong socio-economic profile and an average age of 43.5 years.

*Relearning will allow you to learn with less effort and better performance, involving you more in your training, developing a critical mindset, defending arguments, and contrasting opinions: a direct equation for success.*

From the latest scientific evidence in the field of neuroscience, not only do we know how to organize information, ideas, images and memories, but we know that the place and context where we have learned something is fundamental for us to be able to remember it and store it in the hippocampus, to retain it in our long-term memory.

In this way, and in what is called neurocognitive context-dependent e-learning, the different elements in our program are connected to the context where the individual carries out their professional activity.



This program offers the best educational material, prepared with professionals in mind:



### Study Material

All teaching material is produced by the specialists who teach the course, specifically for the course, so that the teaching content is highly specific and precise.

These contents are then applied to the audiovisual format, to create the TECH online working method. All this, with the latest techniques that offer high quality pieces in each and every one of the materials that are made available to the student.



### Classes

There is scientific evidence suggesting that observing third-party experts can be useful.

Learning from an Expert strengthens knowledge and memory, and generates confidence in future difficult decisions.



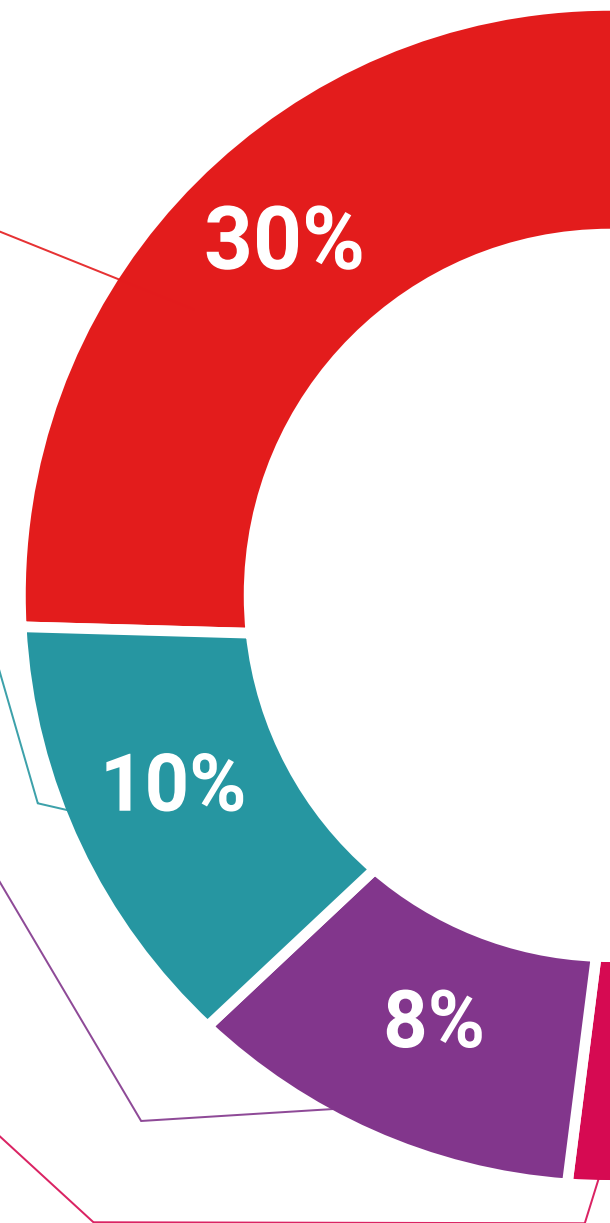
### Practising Skills and Abilities

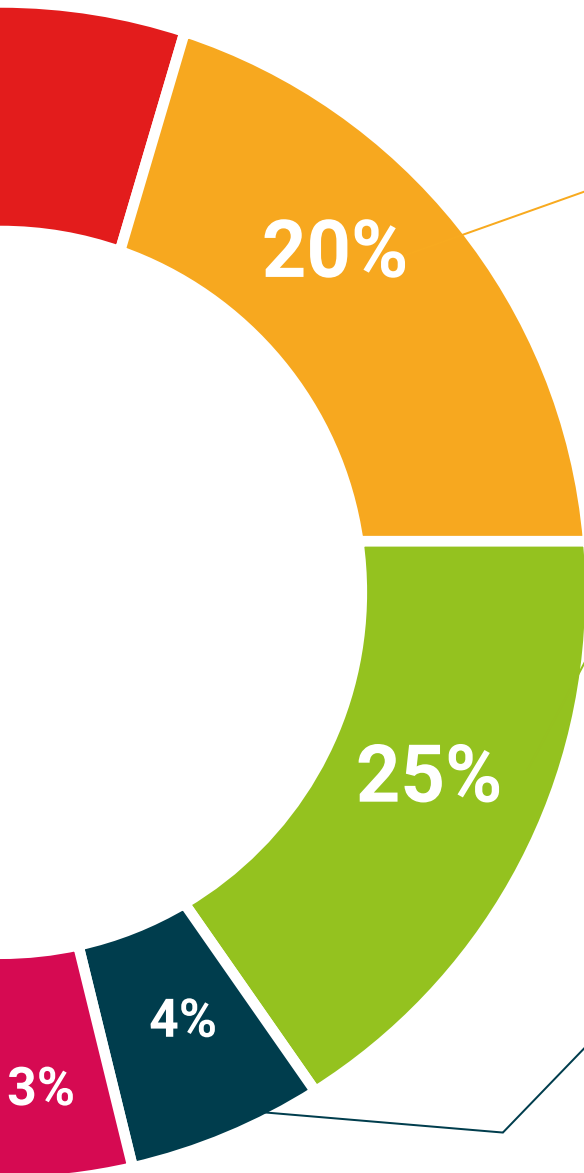
They will carry out activities to develop specific skills and abilities in each subject area. Exercises and activities to acquire and develop the skills and abilities that a specialist needs to develop in the context of the globalization that we are experiencing.



### Additional Reading

Recent articles, consensus documents and international guidelines, among others. In TECH's virtual library, students will have access to everything they need to complete their course.





#### Case Studies

Students will complete a selection of the best case studies chosen specifically for this program. Cases that are presented, analyzed, and supervised by the best specialists in the world.



#### Interactive Summaries

The TECH team presents the contents attractively and dynamically in multimedia lessons that include audio, videos, images, diagrams, and concept maps in order to reinforce knowledge.

This exclusive educational system for presenting multimedia content was awarded by Microsoft as a "European Success Story".



#### Testing & Retesting

We periodically evaluate and re-evaluate students' knowledge throughout the program, through assessment and self-assessment activities and exercises, so that they can see how they are achieving their goals.





05

# Certificate

The Postgraduate Certificate in Planning of Social Intervention guarantees students, in addition to the most rigorous and up-to-date education, access to a Postgraduate Certificate issued by TECH Global University.



“

*Successfully complete this program and receive your university qualification without having to travel or fill out laborious paperwork”*

This program will allow you to obtain your **Postgraduate Certificate in Planning of Social Intervention** endorsed by **TECH Global University**, the world's largest online university.

**TECH Global University** is an official European University publicly recognized by the Government of Andorra ([official bulletin](#)). Andorra is part of the European Higher Education Area (EHEA) since 2003. The EHEA is an initiative promoted by the European Union that aims to organize the international training framework and harmonize the higher education systems of the member countries of this space. The project promotes common values, the implementation of collaborative tools and strengthening its quality assurance mechanisms to enhance collaboration and mobility among students, researchers and academics.

This **TECH Global University** title is a European program of continuing education and professional updating that guarantees the acquisition of competencies in its area of knowledge, providing a high curricular value to the student who completes the program.

Title: **Postgraduate Certificate in Planning of Social Intervention**

Modality: **online**

Duration: **6 weeks**

Accreditation: **6 ECTS**



future  
health confidence people  
education information tutors  
guarantee accreditation teaching  
institutions technology learning  
community commitment  
personalized service innovation  
knowledge present quality  
development language  
virtual classroom



## Postgraduate Certificate Planning of Social Intervention

- » Modality: online
- » Duration: 6 weeks
- » Certificate: TECH Global University
- » Credits: 6 ECTS
- » Schedule: at your own pace
- » Exams: online



# Postgraduate Certificate Planning of Social Intervention

