

Postgraduate Certificate Philosophical Greek



Postgraduate Certificate Philosophical Greek

- » Modality: online
- » Duration: 12 weeks
- » Certificate: TECH Technological University
- » Dedication: 16h/week
- » Schedule: at your own pace
- » Exams: online

Website: <https://www.techtitute.com/pk/humanities/postgraduate-certificate/philosophical-greek>

Index

01

Introduction

p. 4

02

Objectives

p. 8

03

Structure and Content

p. 12

04

Methodology

p. 16

05

Certificate

p. 24

01

Introduction

For the humanist and the philosopher, knowledge of classical Greek is a highly interesting skill, because it implies direct access to the knowledge contained in original texts, eliminating the mediation of translation. Thanks to a complete Postgraduate Certificate, with an intensive program students, will be able to study with total comfort from their own computer. All this, with the reassurance provided by the most prestigious online university in the world.



“

A program created to introduce the philosopher to the use of classical Greek as an advanced working tool"

With this Postgraduate Certificate you will learn the fundamentals of classical Greek, with a study oriented towards its philosophical use, with the objective of enabling the translation and direct understanding of classical texts. An eminently practical Postgraduate Certificate that will add value and a qualification to your CV.

This academic process aims to provide students with the professional and personal skills to practically apply their learning, being able to address contemporary problems and carry out a complete philosophical analysis of them.

This Postgraduate Certificate will also teach students the most effective study methods for this subject.

If you seek self-improvement, to achieve a positive change at a personal level, to interact with the best and belong to a new generation of professionals capable of performing their work anywhere in the world, this may be the path for you.

A Postgraduate Certificate fully compatible with other work, personal, teaching or study commitments. Its system and teaching approach will flexibly adjust to student needs throughout the course. Consequently, the results are much more efficient, since study will not become an unbearable burden, but rather, a stimulating and easy challenge to undertake and bring to fruition.

This **Postgraduate Certificate in Philosophical Greek** contains the most complete and up-to-date program on the market. The most important features include:

- ♦ The examination of case studies to apply the theoretical content to real life situations
- ♦ Graphic, schematic, and practical contents which provide scientific and practical information on the disciplines that are essential for professional practice
- ♦ The inclusion of practical exercises where the self-evaluation process can be carried out to improve learning
- ♦ An algorithm-based interactive learning system for decision-making in the situations that are presented to the student
- ♦ Special emphasis on practical learning
- ♦ All of this will be complemented by theoretical lessons, questions to the expert, debate forums on controversial topics, and individual reflection assignments
- ♦ Content that is accessible from any fixed or portable device with an internet connection



This Postgraduate Certificate will allow you to grow as a philosophy professional and as a humanist, significantly expanding your capacity for analysis and philosophical understanding”

“

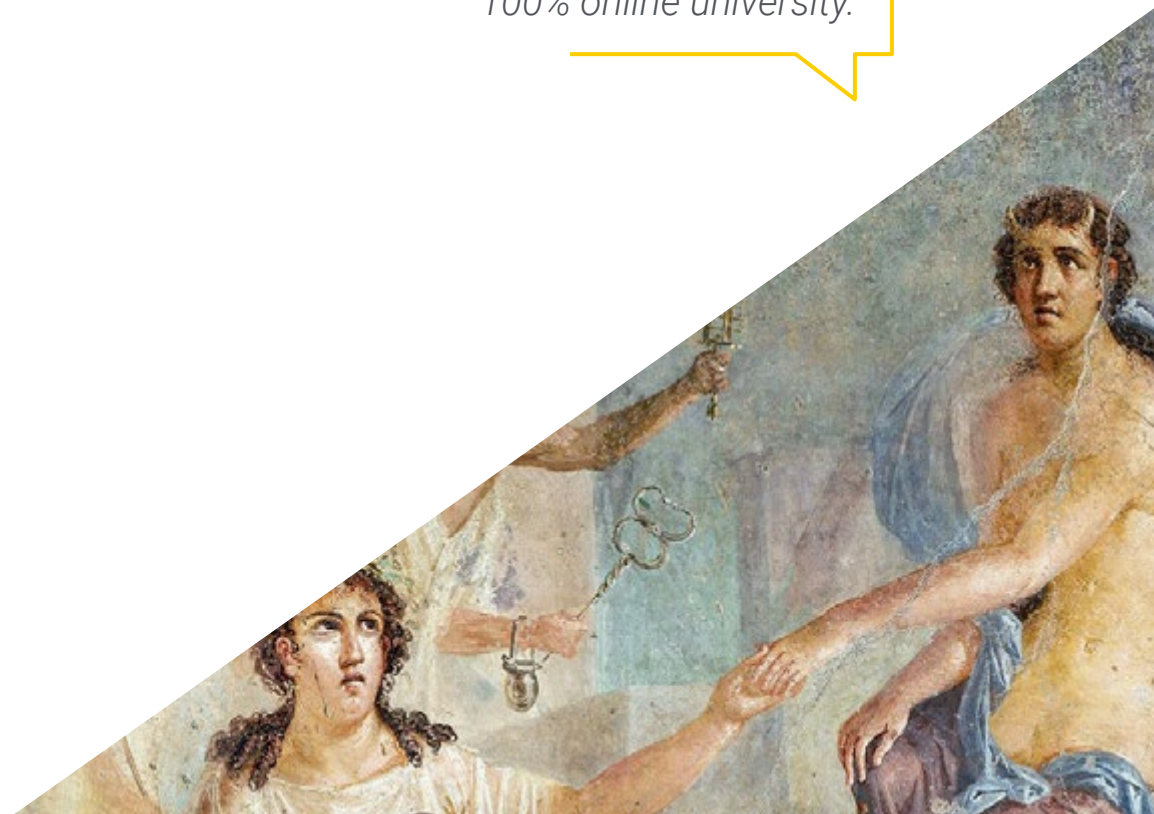
Study with the greatest University of the technological era and you will form part of an institution with a vocation of service, aware of the current needs of society, the world, and particularly of the individual”

This Postgraduate Certificate is created to ensure you can study in a simple, efficient and flexible way, with the superior quality of an advanced academic program.

Study with the technical and human excellence of the world's largest 100% online university.

TECH Technological University offers the most innovative, creative and unique offering, in a dynamic, adept and internationally recognized institution. With a space to exchange ideas, experience and reflections. Students will be able to share their learning experience, through forums and other collaborative tools, all 100% online.

TECH supports its students at all times thanks to an involved and committed teaching team. The teaching team transmits their expertise in their professional performance, working from a real, lively and dynamic context. Above all, it explores the student's critical side, their ability to question things, their problem-solving competence, their interpersonal skills.



02 Objectives

With this Postgraduate Certificate, students will be walked through the essential contents to approach this discipline effectively, learning to undertake analyses, dissertations, presentations, debates or publications related to the subject matter, with the support of the most comprehensive knowledge, with which you will learn and enjoy the benefits of a course designed to optimize your work time to the maximum.





“

A Postgraduate Certificate created to allow your study of Classical Greek to be combined with your daily life, with the utmost flexibility"

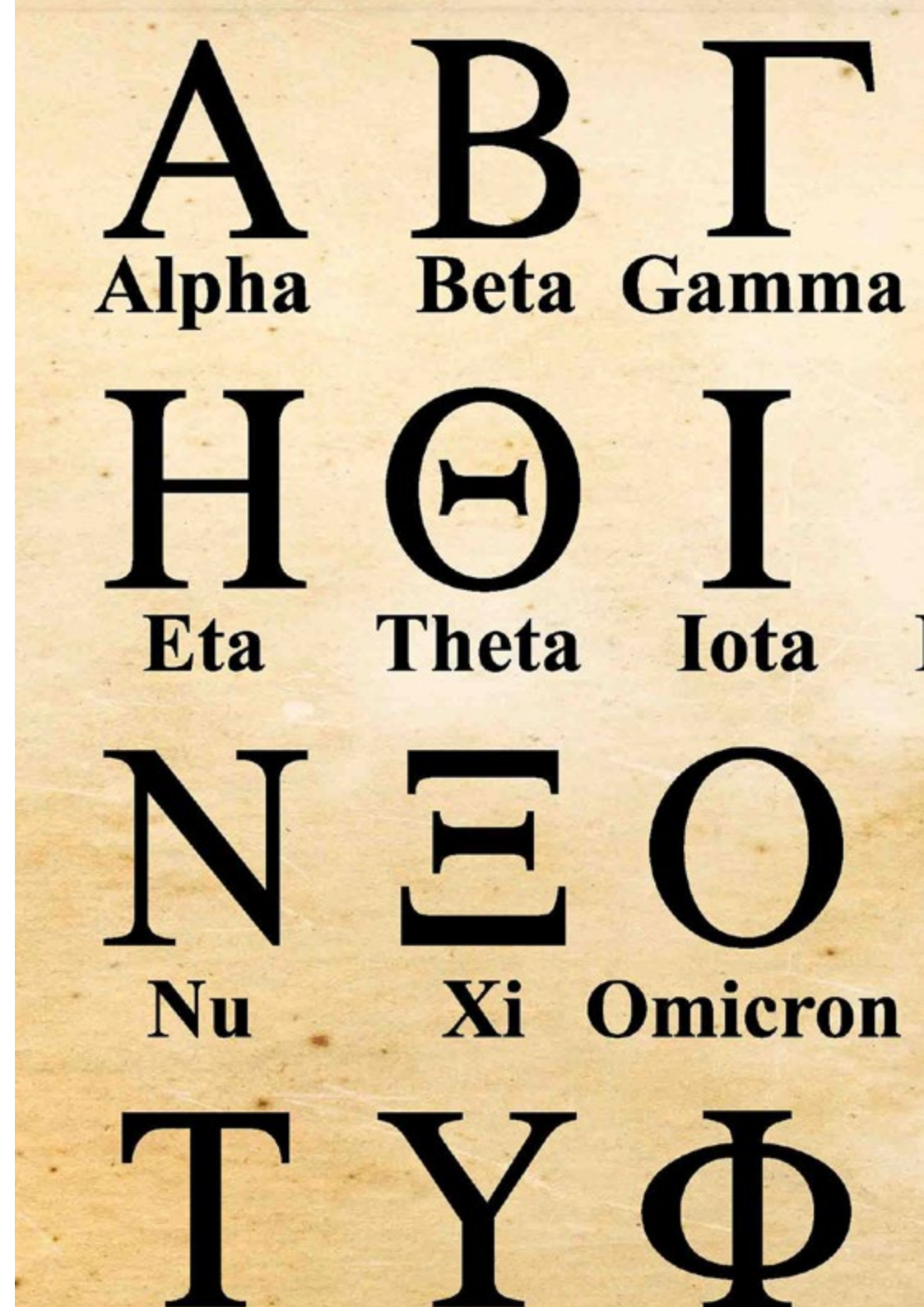


General Objectives

- Acquire a rigorous philosophical method, shaped by ordered thought and the capacity for dialog, putting this into practice
- Possess adequate tools to study philosophical subjects
- Conduct fruitful scientific work
- Structure the diverse philosophical contents that will become evident in daily work environments
- Develop a mental structure and appropriate conceptual frameworks that forge philosophical criteria rooted in Christian tradition, including principles, methods and contents
- Shape students' unique identity as Christian thinkers



The profile of the humanistic professional has reached the highest levels of professionalism. Activate a growth in your competence and don't get left behind"



Δ **Ε** **Ζ**
Delta **Epsilon** **Zeta**

Κ **Λ** **Μ**
Kappa **Lambda** **Mu**

Π **Ρ** **Σ**
Pi **Rho** **Sigma**

Χ **Ψ** **Ω**



Specific Objectives

- Know the basic concepts of syntax in this language
- Be able to achieve aural comprehension and pronunciation of the Greek alphabet
- Achieve reading comprehension of written texts in Greek
- Be able to express oneself in written form in the target language
- Translate texts using the knowledge acquired in this module
- Understand phonetic, syntactic and morphological elements of the classical Greek language
- Establish etymological, semantic and syntactic relationships between classical Greek and English
- Translate sentences and paragraphs from Classical Greek into English and from English into Classical Greek
- Know the correct meaning of the many frequently used Greek locutions that are used in English

03

Structure and Content

This complete course will lead students to acquire the most comprehensive knowledge available, bringing them closer to excellence in the humanistic field. The syllabus has been designed to meet the criteria of high academic impact of this Postgraduate Certificate, and incorporates new teaching approaches that aim to maintain motivation and interest, which are essential to achieving the learning objectives. A high-quality teaching model that sets TECH apart.





A complete journey through the key concepts to know and understand the historical evolution of philosophy"

Module 1. Greek I

- 1.1. Introduction to the Study of the Greek Language
 - 1.1.1. The Greek Alphabet: Phonetic Correspondence with the English Language
 - 1.1.2. Classic Pronunciation
 - 1.1.3. Spelling Signs and Transcription of Greek Words
 - 1.1.4. Lexical Components
 - 1.1.5. Cultural Component: The Geographical and Cultural Scope of Ancient Greece
- 1.2. Textual Grammar of the Descriptive Sequence
 - 1.2.1. Concept of Nominal Inflection: Cases and Functions, the Article
 - 1.2.2. Nominative and genitive of the three declensions, nouns, adjectives and article, singular and plural
 - 1.2.3. The Verb Eimi: Present and Indicative Imperfect Tense; and Present Tense of Verbs in Omega
 - 1.2.4. The Structure of the Predicative and Attributive Sentence Functions: Subject, Attribute, Nominal Predicate and Determinative Complement
 - 1.2.5. Textual Cohesion Conjunctions (Copulative, Adversative and Disjunctive) and/or Discourse Connectors: kai, kai, kai, de, men, de, de, alla, h
- 1.3. Textual Grammar of the Explanatory Sequence
 - 1.3.1. Transitive and Enunciative Sentence
 - 1.3.2. Transitive Verbs: Imperfect Tense of the Indicative of Verbs in Omega
 - 1.3.3. Dative and Accusative of the 3 Declensions. Nouns and Adjectives and Article: Singular and Plural
 - 1.3.4. Prepositions with Dative (en, sun) and with Accusative (eij, pros) Functions: Indirect, Direct and Circumstantial Complement
 - 1.3.5. Textual Cohesion: Causal Conjunctions or Connectors: oti, disti,





Module 2. Greek II

- 2.1. Textual Grammar of the Instructional Sequence
 - 2.1.1. Imperative Sentence
 - 2.1.2. Transitive Verbs: Present Subjunctive, Imperative and Future Indicative of Active Voice
 - 2.1.3. Vocatives of the Three Declensions, Nouns and Adjectives Functions: Interpellated Subject, Direct Complement and Circumstantial Complement
 - 2.1.4. Prepositions with Genitive
 - 2.1.5. Textual Cohesion Adverbs
- 2.2. Textual Grammar of the Narrative Sequence
 - 2.2.1. Declarative Sentence
 - 2.2.2. Verbs in the Aorist of Indicative of the Active Voice
 - 2.2.3. Degrees of the Adjective: Positive, Comparative, Superlative
 - 2.2.4. Discourse Connectors: Ilative or Conclusive Conjunctions such as a)/ra, dh/,ou)/koun, ou)kou=n and Temporal Conjunctions such as pote/.to/te, pa/lai, pri/n etc.
- 2.3. Textual Grammar of the Diagonal Sequence
 - 2.3.1. Direct Interrogative Sentence The Affirmative Sentence (Assertion)
 - 2.3.2. Interrogative Pronouns (ti/f, ti/; po/suf, How Many; poi/of, Which; po/terof, Which of Two)
 - 2.3.3. Demonstrative Pronouns (au(to/f, e) kei=nof. Azllof, Exterof)
 - 2.3.4. Past Perfect Indicative Active Voice
 - 2.3.5. Interrogative Nexus: h)=, a)= pa, a)=r ou), ou)/koun. Affirmative Nexus: nai/, ge, dh/, ma/ list



The most intensive and complete Postgraduate Certificate in Philosophical Greek on the online teaching market"

04

Methodology

This academic program offers students a different way of learning. Our methodology uses a cyclical learning approach: **Relearning**.

This teaching system is used, for example, in the most prestigious medical schools in the world, and major publications such as the **New England Journal of Medicine** have considered it to be one of the most effective.



“

Discover Relearning, a system that abandons conventional linear learning, to take you through cyclical teaching systems: a way of learning that has proven to be extremely effective, especially in subjects that require memorization"

Case Study to contextualize all content

Our program offers a revolutionary approach to developing skills and knowledge. Our goal is to strengthen skills in a changing, competitive, and highly demanding environment.

“

At TECH, you will experience a learning methodology that is shaking the foundations of traditional universities around the world”



You will have access to a learning system based on repetition, with natural and progressive teaching throughout the entire syllabus.



The student will learn to solve complex situations in real business environments through collaborative activities and real cases.

A learning method that is different and innovative

This TECH program is an intensive educational program, created from scratch, which presents the most demanding challenges and decisions in this field, both nationally and internationally. This methodology promotes personal and professional growth, representing a significant step towards success. The case method, a technique that lays the foundation for this content, ensures that the most current economic, social and professional reality is taken into account.

“*Our program prepares you to face new challenges in uncertain environments and achieve success in your career*”

The case method has been the most widely used learning system among the world's leading Humanities schools for as long as they have existed. The case method was developed in 1912 so that law students would not only learn the law based on theoretical content. It consisted of presenting students with real-life, complex situations for them to make informed decisions and value judgments on how to resolve them. In 1924, Harvard adopted it as a standard teaching method.

What should a professional do in a given situation? This is the question we face in the case method, an action-oriented learning method. Throughout the program, the studies will be presented with multiple real cases. They will have to combine all their knowledge and research, and argue and defend their ideas and decisions.

Relearning Methodology

TECH effectively combines the Case Study methodology with a 100% online learning system based on repetition, which combines 8 different teaching elements in each lesson.

We enhance the Case Study with the best 100% online teaching method: Relearning.

In 2019, we obtained the best learning results of all online universities in the world.

At TECH you will learn using a cutting-edge methodology designed to train the executives of the future. This method, at the forefront of international teaching, is called Relearning.

Our university is the only one in the world authorized to employ this successful method. In 2019, we managed to improve our students' overall satisfaction levels (teaching quality, quality of materials, course structure, objectives...) based on the best online university indicators.



In our program, learning is not a linear process, but rather a spiral (learn, unlearn, forget, and re-learn). Therefore, we combine each of these elements concentrically. With this methodology we have trained more than 650,000 university graduates with unprecedented success in fields as diverse as biochemistry, genetics, surgery, international law, management skills, sports science, philosophy, law, engineering, journalism, history, markets, and financial instruments. All this in a highly demanding environment, where the students have a strong socio-economic profile and an average age of 43.5 years.

Relearning will allow you to learn with less effort and better performance, involving you more in your training, developing a critical mindset, defending arguments, and contrasting opinions: a direct equation for success.

From the latest scientific evidence in the field of neuroscience, not only do we know how to organize information, ideas, images and memories, but we know that the place and context where we have learned something is fundamental for us to be able to remember it and store it in the hippocampus, to retain it in our long-term memory.

In this way, and in what is called neurocognitive context-dependent e-learning, the different elements in our program are connected to the context where the individual carries out their professional activity.



This program offers the best educational material, prepared with professionals in mind:



Study Material

All teaching material is produced by the specialists who teach the course, specifically for the course, so that the teaching content is highly specific and precise.

These contents are then applied to the audiovisual format, to create the TECH online working method. All this, with the latest techniques that offer high quality pieces in each and every one of the materials that are made available to the student.



Classes

There is scientific evidence suggesting that observing third-party experts can be useful.

Learning from an Expert strengthens knowledge and memory, and generates confidence in future difficult decisions.



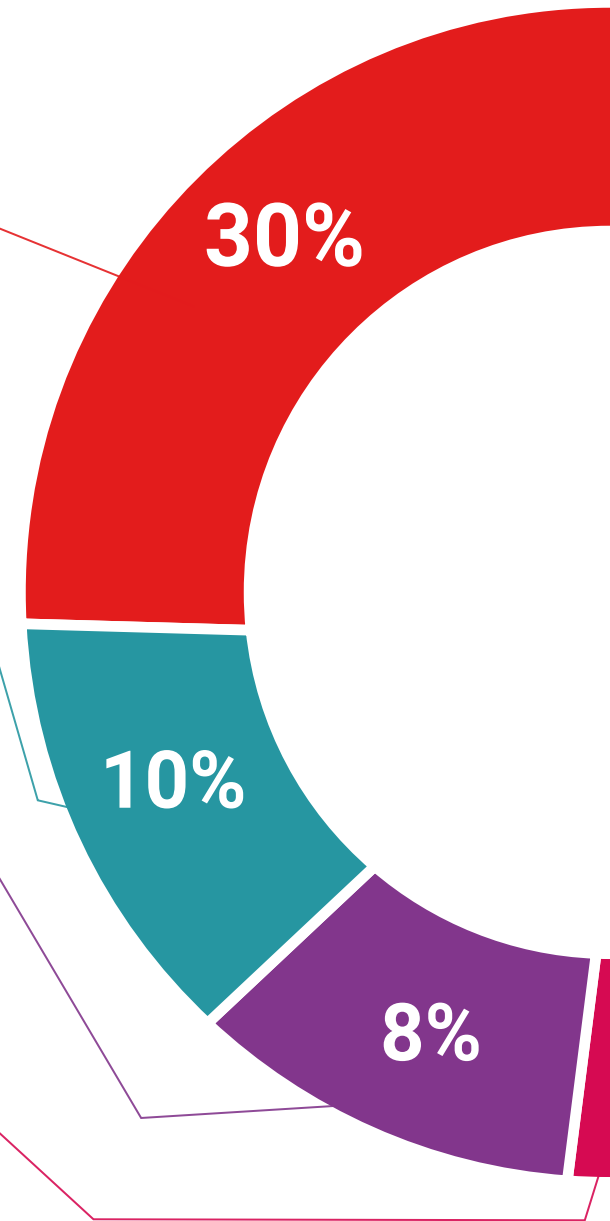
Practising Skills and Abilities

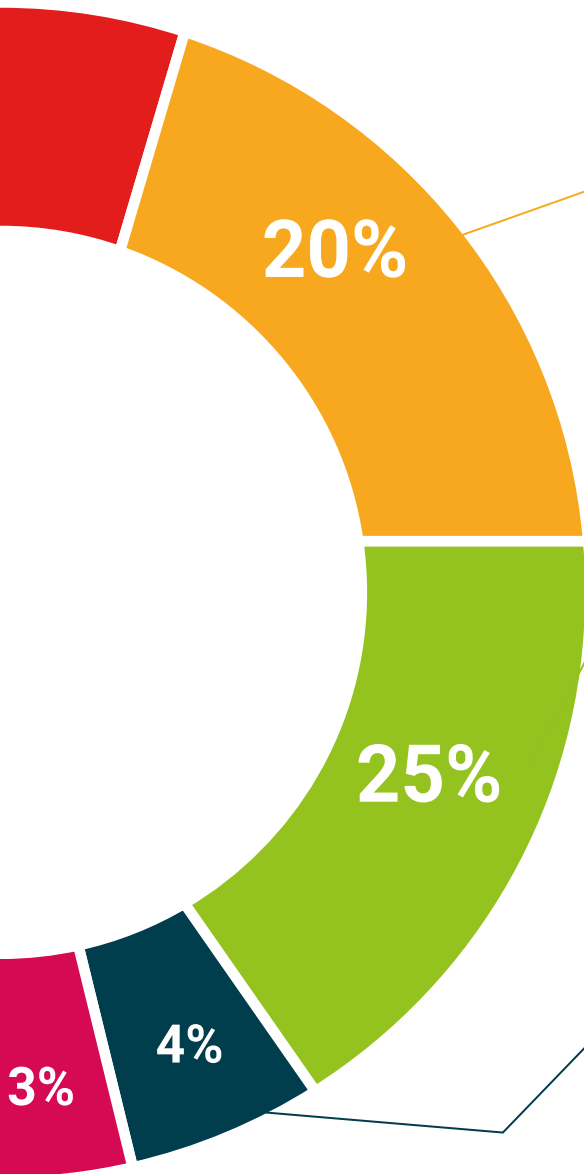
They will carry out activities to develop specific skills and abilities in each subject area. Exercises and activities to acquire and develop the skills and abilities that a specialist needs to develop in the context of the globalization that we are experiencing.



Additional Reading

Recent articles, consensus documents and international guidelines, among others. In TECH's virtual library, students will have access to everything they need to complete their course.





Case Studies

Students will complete a selection of the best case studies chosen specifically for this program. Cases that are presented, analyzed, and supervised by the best specialists in the world.



Interactive Summaries

The TECH team presents the contents attractively and dynamically in multimedia lessons that include audio, videos, images, diagrams, and concept maps in order to reinforce knowledge.

This exclusive educational system for presenting multimedia content was awarded by Microsoft as a "European Success Story".



Testing & Retesting

We periodically evaluate and re-evaluate students' knowledge throughout the program, through assessment and self-assessment activities and exercises, so that they can see how they are achieving their goals.



05 Certificate

The Postgraduate Certificate in Philosophical Greek guarantees students, in addition to the most rigorous and up-to-date education, access to a Postgraduate Certificate issued by TECH Technological University.



“

Successfully complete this program and receive your university qualification without having to travel or fill out laborious paperwork"

This **Postgraduate Certificate in Philosophical Greek** contains the most comprehensive and up-to-date program on the market.

After the student has passed the assessments, they will receive their corresponding **Postgraduate Certificate** issued by **TECH Technological University** via tracked delivery*.

The certificate issued by **TECH Technological University** will reflect the qualification obtained in the Postgraduate Certificate, and meets the requirements commonly demanded by labor exchanges, competitive examinations and professional career evaluation committees.

Title: **Postgraduate Certificate in Philosophical Greek**

Official N° of Hours: **250 h.**



*Apostille Convention. In the event that the student wishes to have their paper certificate issued with an apostille, TECH EDUCATION will make the necessary arrangements to obtain it, at an additional cost.

future
health confidence people
education information tutors
guarantee accreditation teaching
institutions technology learning
community commitment
personalized service innovation
knowledge present quality
development languages
classroom



Postgraduate Certificate Philosophical Greek

- » Modality: online
- » Duration: 12 weeks
- » Certificate: TECH Technological University
- » Dedication: 16h/week
- » Schedule: at your own pace
- » Exams: online

Postgraduate Certificate Philosophical Greek

