

Postgraduate Certificate

Philosophical Anthropology of Life and Human Affectivity





Postgraduate Certificate Philosophical Anthropology of Life and Human Affectivity

- » Modality: **online**
- » Duration: **6 weeks**
- » Certificate: **TECH Global University**
- » Credits: **6 ECTS**
- » Schedule: **at your own pace**
- » Exams: **online**

Website: www.techtute.com/us/philosophy/postgraduate-certificate/philosophical-anthropology-life-human-affectivity

Index

01

Introduction

p. 4

02

Objectives

p. 8

03

Structure and Content

p. 12

04

Methodology

p. 16

05

Certificate

p. 24

01

Introduction

Philosophical anthropology has developed, from the study of human life and affectivity, lines of thought that seek to explain many aspects that other disciplines cannot explain. This program is a unique opportunity for the students to immerse themselves in this field of study. With a comprehensive work program that, from the student's computer, will allow them to learn efficiently and comfortably. All this, with the reassurance provided by the most prestigious online university in the world.



“

A broad and complete Postgraduate Certificate on the philosophical developments arising from the study of human affectivity and the life of men and women as affective beings"

The goal of this program is to analyze man from a philosophical point of view. For this purpose, the constitutive elements of the human species will be studied and defined.

From this starting point, the Postgraduate Certificate will take the student through the study of the cognitive, volitional and affective aspects that constitute humanity.

However, in addition, with this program, the professional will be able to learn with the most effective systems for the study of this subject.

If the goal is to improve oneself, achieve a positive change on a personal level, interact with the best and belong to the new generation of professionals capable of developing their work anywhere in the world, this may be the way to go.

A Postgraduate Certificate fully compatible with other work, personal, teaching or study commitments. From the start, in its teaching approaches, to the end, in its assessments, the system will be flexible to the student's needs. Consequently, the results are much more efficient, since the study will not become an unbearable burden, but rather, a stimulating and easy challenge to undertake and bring to fruition.

This **Postgraduate Certificate in Philosophical Anthropology of Life and Human Affectivity** contains the most complete and up-to-date program on the market. The most important features include:

- ♦ Practical cases to apply the theoretical content to real life situations
- ♦ The graphic, schematic, and practical contents with which they are created provide scientific and practical information on the disciplines that are essential for professional practice
- ♦ It contains practical exercises where the self-assessment process can be carried out to improve learning
- ♦ Algorithm-based interactive learning system for decision-making in the situations that are presented to the student
- ♦ Special emphasis on practical learning
- ♦ All of this will be complemented by theoretical lessons, questions to the expert, debate forums on controversial topics, and individual reflection assignments
- ♦ Content that is accessible from any fixed or portable device with an Internet connection



This Postgraduate Certificate will allow you to grow as a professional in philosophy and as a humanist, significantly expanding your capacity for analysis and philosophical understanding”

“

Study with the largest university of the technological era and you will be part of an entity with a vocation of service, aware of the current needs of society, globally, and of the individual, in particular"

At TECH Global University we offer you the most innovative, creative and different proposal, in a dynamic institution with talent and international recognition. With a space to exchange ideas, experience and reflections. The professional will be able to share the experience in the study, through forums and other collaborative tools 100% online.

TECH Global University accompanies the student at all times thanks to an involved and committed faculty. The university's teaching staff transmits what they do in their professional performance, working from a real, lively and dynamic context. But, above all, the critical side of the student is explored, their ability to question things, their competence in problem solving, their interpersonal skills.

This Postgraduate Certificate is created to ensure you can study in a simple, efficient and flexible way, with the superior quality of an advanced academic program.

The constitutive elements of the human species, under the critical view of anthropological philosophy.



02

Objectives

With this Postgraduate Certificate, the professional will be prepared through the essential contents in the approach to this discipline, learning to carry out analyses, dissertations, presentations, debates or publications related to this subject, with the support of the most complete knowledge. A program with which the student will learn while enjoying the benefits of a program designed to optimize their work time to the maximum.



“

All the necessary learning to make you an expert in Philosophical Anthropology of Life and Human Affectivity, in a Postgraduate Certificate of the highest quality"



General Objectives

- ♦ Acquire a rigorous philosophical method, shaped by the order in thought and the capacity for dialog, as well as putting it into practice
- ♦ Possess the adequate tools to study philosophical subjects
- ♦ Conduct fruitful scientific work
- ♦ Structure the various philosophical contents that will become evident in daily work environments
- ♦ Develop a mental structure and appropriate conceptual frameworks that structure philosophical criteria rooted in Christian tradition, including principles, methods and contents
- ♦ Shape students' specific identity as Christian thinkers





Specific Objectives

- ♦ Analyze the study of man from a philosophical point of view
- ♦ Analyze the human phenomenon in order to highlight the constitutive elements of man
- ♦ Understand the philosophical meaning of the question of the human being, pointing out the themes of human life, uniquely human behavior and the cognitive, volitional and affective dynamism of man
- ♦ Raise human problems and discuss their implications in everyday life
- ♦ Identify anthropological conceptions diffused in cultural expressions



The profile of the humanistic professional has reached the highest levels of professionalism. Activate your competence growth and don't get left behind"

03

Structure and Content

This complete educational program will lead the student to the acquisition of the most complete knowledge in this field, approaching excellence in the humanistic field. The program has been designed taking into account the high educational impact criteria of this Postgraduate Certificate, and the new teaching approaches that aim to maintain the motivation and interest necessary to achieve the learning objectives. A high-quality teaching model that differentiates TECH Global University.



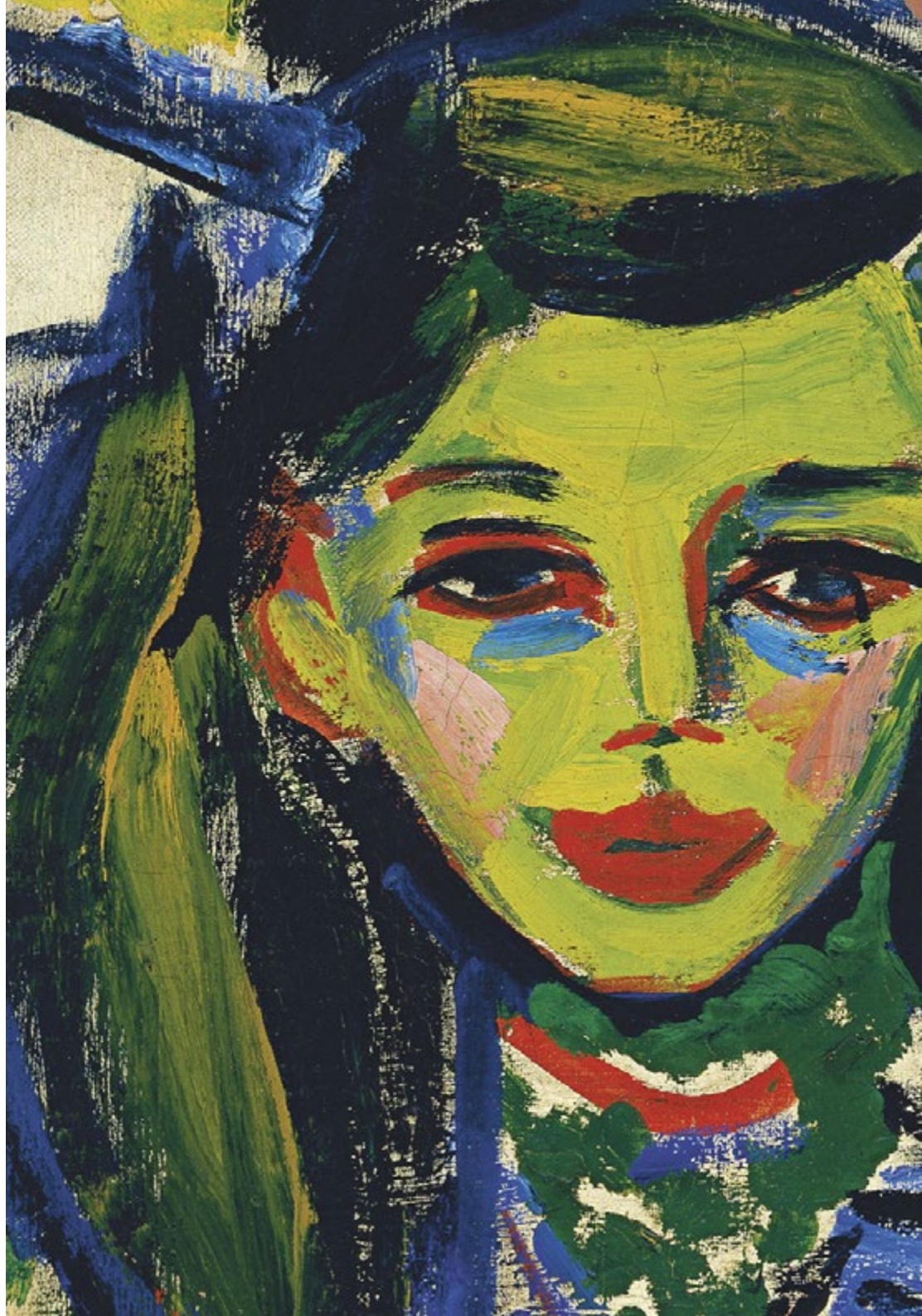
A large, stylized silhouette of a human head in profile, facing right. The silhouette is filled with a gradient of blue and teal colors. The background is divided into several geometric sections: a dark green triangle at the top right, a brown triangle at the bottom right, and a white triangle at the bottom left. In the bottom left corner, there is a small white icon of a person's head and shoulders inside a blue circle.

“

A syllabus created to gradually lead you to acquire the maximum knowledge in Philosophical Anthropology of Life and Human Affectivity, with the security of the highest quality teaching materials"

Module 1. Philosophical Anthropology

- 1.1. Introduction
 - 1.1.1. Human Beings as a Mystery
 - 1.1.2. The Nature and Method of Philosophical Anthropology
 - 1.1.3. Historical Overview of the Conception of Humans
- 1.2. Human Life
 - 1.2.1. Historical Conceptions of Human Life
 - 1.2.2. The Vital Principle and the Degrees of Life
 - 1.2.3. The Origin of Human Life
 - 1.2.4. Hominization Process: Evolutionary Theories and Assessment
 - 1.2.5. The Principle of Human Life
- 1.3. The Phenomenology of Human Behavior
 - 1.3.1. Attempts to Explain Human Behavior
 - 1.3.2. Phenomena Specific to Humans
 - 1.3.3. Animal Instinct and Human Instinct
- 1.4. Human Knowledge
 - 1.4.1. Human Knowledge in General
 - 1.4.2. External Sensations
 - 1.4.3. Internal Perception
 - 1.4.4. Intellectual Knowledge
 - 1.4.5. Self-Conscience
 - 1.4.6. Spirituality of Intellectual Knowledge



- 1.5. Human Desire
 - 1.5.1. Human Desire in General
 - 1.5.2. Sentient Tendencies
 - 1.5.3. Human Will
 - 1.5.4. Process of Volition
 - 1.5.5. Freedom and Love
 - 1.5.6. Spirituality of the Human Will
- 1.6. Human Affectivity
 - 1.6.1. Human Affectivity in General
 - 1.6.2. Emotions
 - 1.6.3. Feelings
 - 1.6.4. Pleasure and Pain

“

The most intensive and complete Postgraduate Certificate in Philosophical Anthropology of Life and Human Affectivity in the online educational market"

04

Methodology

This academic program offers students a different way of learning. Our methodology uses a cyclical learning approach: **Relearning**.

This teaching system is used, for example, in the most prestigious medical schools in the world, and major publications such as the **New England Journal of Medicine** have considered it to be one of the most effective.



“

Discover Relearning, a system that abandons conventional linear learning, to take you through cyclical teaching systems: a way of learning that has proven to be extremely effective, especially in subjects that require memorization"

Case Study to contextualize all content

Our program offers a revolutionary approach to developing skills and knowledge. Our goal is to strengthen skills in a changing, competitive, and highly demanding environment.

“

At TECH, you will experience a learning methodology that is shaking the foundations of traditional universities around the world"



You will have access to a learning system based on repetition, with natural and progressive teaching throughout the entire syllabus.



The student will learn to solve complex situations in real business environments through collaborative activities and real cases.

A learning method that is different and innovative

This TECH program is an intensive educational program, created from scratch, which presents the most demanding challenges and decisions in this field, both nationally and internationally. This methodology promotes personal and professional growth, representing a significant step towards success. The case method, a technique that lays the foundation for this content, ensures that the most current economic, social and professional reality is taken into account.

“*Our program prepares you to face new challenges in uncertain environments and achieve success in your career*”

The case method has been the most widely used learning system among the world's leading Humanities schools for as long as they have existed. The case method was developed in 1912 so that law students would not only learn the law based on theoretical content. It consisted of presenting students with real-life, complex situations for them to make informed decisions and value judgments on how to resolve them. In 1924, Harvard adopted it as a standard teaching method.

What should a professional do in a given situation? This is the question we face in the case method, an action-oriented learning method. Throughout the program, the studies will be presented with multiple real cases. They will have to combine all their knowledge and research, and argue and defend their ideas and decisions.

Relearning Methodology

TECH effectively combines the Case Study methodology with a 100% online learning system based on repetition, which combines 8 different teaching elements in each lesson.

We enhance the Case Study with the best 100% online teaching method: Relearning.

In 2019, we obtained the best learning results of all online universities in the world.

At TECH you will learn using a cutting-edge methodology designed to train the executives of the future. This method, at the forefront of international teaching, is called Relearning.

Our university is the only one in the world authorized to employ this successful method. In 2019, we managed to improve our students' overall satisfaction levels (teaching quality, quality of materials, course structure, objectives...) based on the best online university indicators.



In our program, learning is not a linear process, but rather a spiral (learn, unlearn, forget, and re-learn). Therefore, we combine each of these elements concentrically. With this methodology we have trained more than 650,000 university graduates with unprecedented success in fields as diverse as biochemistry, genetics, surgery, international law, management skills, sports science, philosophy, law, engineering, journalism, history, markets, and financial instruments. All this in a highly demanding environment, where the students have a strong socio-economic profile and an average age of 43.5 years.

Relearning will allow you to learn with less effort and better performance, involving you more in your training, developing a critical mindset, defending arguments, and contrasting opinions: a direct equation for success.

From the latest scientific evidence in the field of neuroscience, not only do we know how to organize information, ideas, images and memories, but we know that the place and context where we have learned something is fundamental for us to be able to remember it and store it in the hippocampus, to retain it in our long-term memory.

In this way, and in what is called neurocognitive context-dependent e-learning, the different elements in our program are connected to the context where the individual carries out their professional activity.



This program offers the best educational material, prepared with professionals in mind:



Study Material

All teaching material is produced by the specialists who teach the course, specifically for the course, so that the teaching content is highly specific and precise.

These contents are then applied to the audiovisual format, to create the TECH online working method. All this, with the latest techniques that offer high quality pieces in each and every one of the materials that are made available to the student.



Classes

There is scientific evidence suggesting that observing third-party experts can be useful.

Learning from an Expert strengthens knowledge and memory, and generates confidence in future difficult decisions.



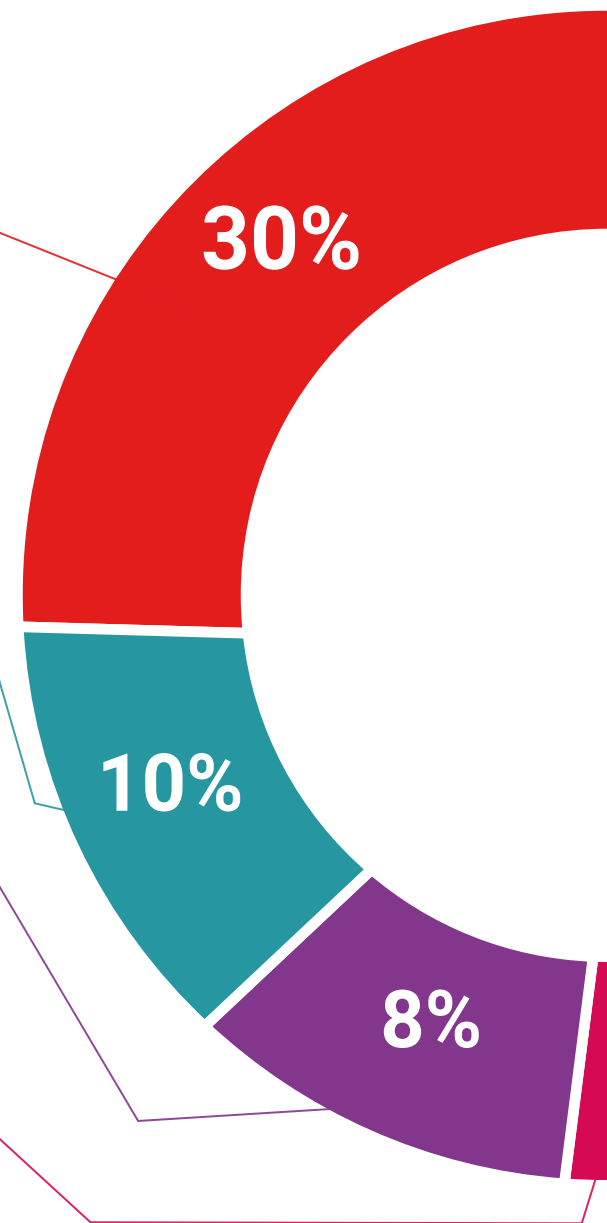
Practising Skills and Abilities

They will carry out activities to develop specific skills and abilities in each subject area. Exercises and activities to acquire and develop the skills and abilities that a specialist needs to develop in the context of the globalization that we are experiencing.



Additional Reading

Recent articles, consensus documents and international guidelines, among others. In TECH's virtual library, students will have access to everything they need to complete their course.





Case Studies

Students will complete a selection of the best case studies chosen specifically for this program. Cases that are presented, analyzed, and supervised by the best specialists in the world.



Interactive Summaries

The TECH team presents the contents attractively and dynamically in multimedia lessons that include audio, videos, images, diagrams, and concept maps in order to reinforce knowledge.

This exclusive educational system for presenting multimedia content was awarded by Microsoft as a "European Success Story".



Testing & Retesting

We periodically evaluate and re-evaluate students' knowledge throughout the program, through assessment and self-assessment activities and exercises, so that they can see how they are achieving their goals.



05

Certificate

The Postgraduate Certificate in Philosophical Anthropology of Life and Human Affectivity guarantees students, in addition to the most rigorous and up-to-date education, access to a Postgraduate Certificate issued by TECH Global University.



“

Successfully complete this program and receive your university qualification without travel or laborious paperwork”

This program will allow you to obtain your **Postgraduate Certificate in Philosophical Anthropology of Life and Human Affectivity** endorsed by **TECH Global University**, the world's largest online university.

TECH Global University is an official European University publicly recognized by the Government of Andorra ([official bulletin](#)). Andorra is part of the European Higher Education Area (EHEA) since 2003. The EHEA is an initiative promoted by the European Union that aims to organize the international training framework and harmonize the higher education systems of the member countries of this space. The project promotes common values, the implementation of collaborative tools and strengthening its quality assurance mechanisms to enhance collaboration and mobility among students, researchers and academics.

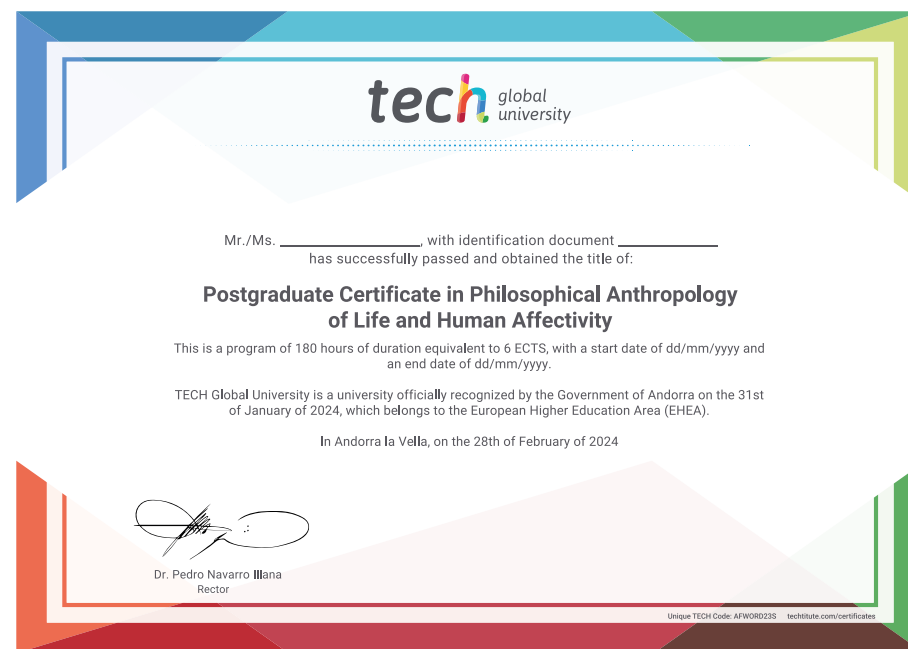
This **TECH Global University** title is a European program of continuing education and professional updating that guarantees the acquisition of competencies in its area of knowledge, providing a high curricular value to the student who completes the program.

Title: **Postgraduate Certificate in Philosophical Anthropology of Life and Human Affectivity**

Modality: **online**

Duration: **6 weeks**

Accreditation: **6 ECTS**



future
health confidence people
education information tutors
guarantee accreditation teaching
institutions technology learning
community commitment
personalized service innovation
knowledge present
development language
virtual classroom



Postgraduate Certificate
Philosophical
Anthropology of Life
and Human Affectivity

- » Modality: online
- » Duration: 6 weeks
- » Certificate: TECH Global University
- » Credits: 6 ECTS
- » Schedule: at your own pace
- » Exams: online

Postgraduate Certificate

Philosophical Anthropology of Life and Human Affectivity