

Postgraduate Certificate Metaphysical Theology



Postgraduate Certificate Metaphysical Theology

- » Modality: online
- » Duration: 6 weeks
- » Certificate: TECH Technological University
- » Schedule: at your own pace
- » Exams: online

Website: www.techtitute.com/in/humanities/postgraduate-certificate/metaphysical-theology

Index

01

Introduction

p. 4

02

Objectives

p. 8

03

Structure and Content

p. 12

04

Methodology

p. 16

05

Certificate

p. 24

01

Introduction

Analyzing God with the thinking tools of philosophy is one of the challenges that this branch of human knowledge faces. In this program, TECH Technological University offers a complete tour through the great questions that this issue has raised throughout history. Through a complete program, with an intensive syllabus and with your own computer, you will be able to learn efficiently and comfortably. All this, with the reassurance provided by the most prestigious online university in the world.





BIBLE

“

A complete learning about the philosophical study on the absolute being, which will open the doors to the professional for analytical thinking on this issue”

This Postgraduate Certificate develops the historical itinerary of philosophical reflection on God. With this course, the professional will be able to access the philosophical way of working that refers to the argumentation and debate on the existence of God.

In addition, you will learn how to understand the role of God in the world and in the life of the human being and you will acquire the necessary arguments to explain the existence and essence of God.

With an interdisciplinary approach, the philosophy professional will learn a range of deliberation methods that will enable them to analyze specific cases, being able to apply the same reasoning to any future challenges that may arise forthwith.

In addition, with this Postgraduate Certificate, you will learn with the most effective systems for the study of this subject.

If the goal is to improve oneself, achieve a positive change on a personal level, interact with the best and belong to the new generation of professionals capable of developing their work anywhere in the world, this may be the way to go.

A Postgraduate Certificate fully compatible with other work, personal, teaching or study commitments. From the start, in its teaching approaches, to the end, in its assessments, the system will be flexible to the student's needs. Consequently, the results are much more efficient, since the study will not become an unbearable burden, but rather, a stimulating and easy challenge to undertake and bring to fruition.

This **Postgraduate Certificate in Metaphysical Theology** contains the most complete and up-to-date program on the market. Its most notable features are:

- ♦ Practical cases to apply the theoretical content to real life situations
- ♦ The graphic, schematic, and practical contents with which they are created provide scientific and practical information on the disciplines that are essential for professional practice
- ♦ It contains practical exercises where the self-assessment process can be carried out to improve learning
- ♦ Algorithm-based interactive learning system for decision-making in the situations that are presented to the student
- ♦ Special emphasis on practical learning
- ♦ All of this will be complemented by theoretical lessons, questions to the expert, debate forums on controversial topics, and individual reflection assignments
- ♦ Content that is accessible from any fixed or portable device with an Internet connection



This Postgraduate Certificate will allow you to grow as a professional in philosophy and as a humanist, significantly expanding your capacity for analysis and philosophical understanding”

“

Study with the largest university of the technological era and you will be part of an entity with a vocation of service, aware of the current needs of society, globally, and of the individual, in particular"

At TECH Technological University we offer you the most innovative, creative and different proposal, in a dynamic institution with talent and international recognition. With a space to exchange ideas, experience and reflections. The professional will be able to share the experience in the study, through forums and other collaborative tools 100% online.

TECH Technological University accompanies the student at all times thanks to an involved and committed faculty. The university's teaching staff transmits what they do in their professional performance, working from a real, lively and dynamic context. But, above all, the critical side of the student is explored, their ability to question things, their competence in problem solving, their interpersonal skills.

This Postgraduate Certificate is created to ensure you can study in a simple, efficient and flexible way, with the superior quality of an advanced academic program.

To learn how to face the problem of the existence of God, their essence and relationship with the world, as an object of study of philosophy.



02

Objectives

With this Postgraduate Certificate, the professional will be prepared through the essential contents in the approach to this discipline, learning to carry out analyses, dissertations, presentations, debates or publications related to this subject, with the support of the most complete knowledge. A program with which you will learn while enjoying the benefits of a program designed to optimize your work time to the maximum.



“

Learn to work as a philosopher and to engage in dissertations, analyses and debates about the figure of God and the relationship to the world"



General Objectives

- ♦ Acquire a rigorous philosophical method, shaped by the order in thought and the capacity for dialog, as well as putting it into practice
- ♦ Possess the adequate tools to study philosophical subjects
- ♦ Conduct fruitful scientific work
- ♦ Structure the various philosophical contents that will become evident in daily work environments
- ♦ Develop a mental structure and appropriate conceptual frameworks that structure philosophical criteria rooted in Christian tradition, including principles, methods and contents
- ♦ Shape students' specific identity as Christian thinkers





Specific Objectives

- ♦ Pose the question of God as a philosophical problem
- ♦ Critically present the historical itinerary of philosophical reflections on God
- ♦ Philosophically discuss the existence and nature of absolute being
- ♦ Understand the role that God plays in the world and in the human life
- ♦ Possess sufficient arguments to explain the existence and essence of God



Activate your competency growth and place yourself at the forefront among the best prepared contemporary humanists"

03

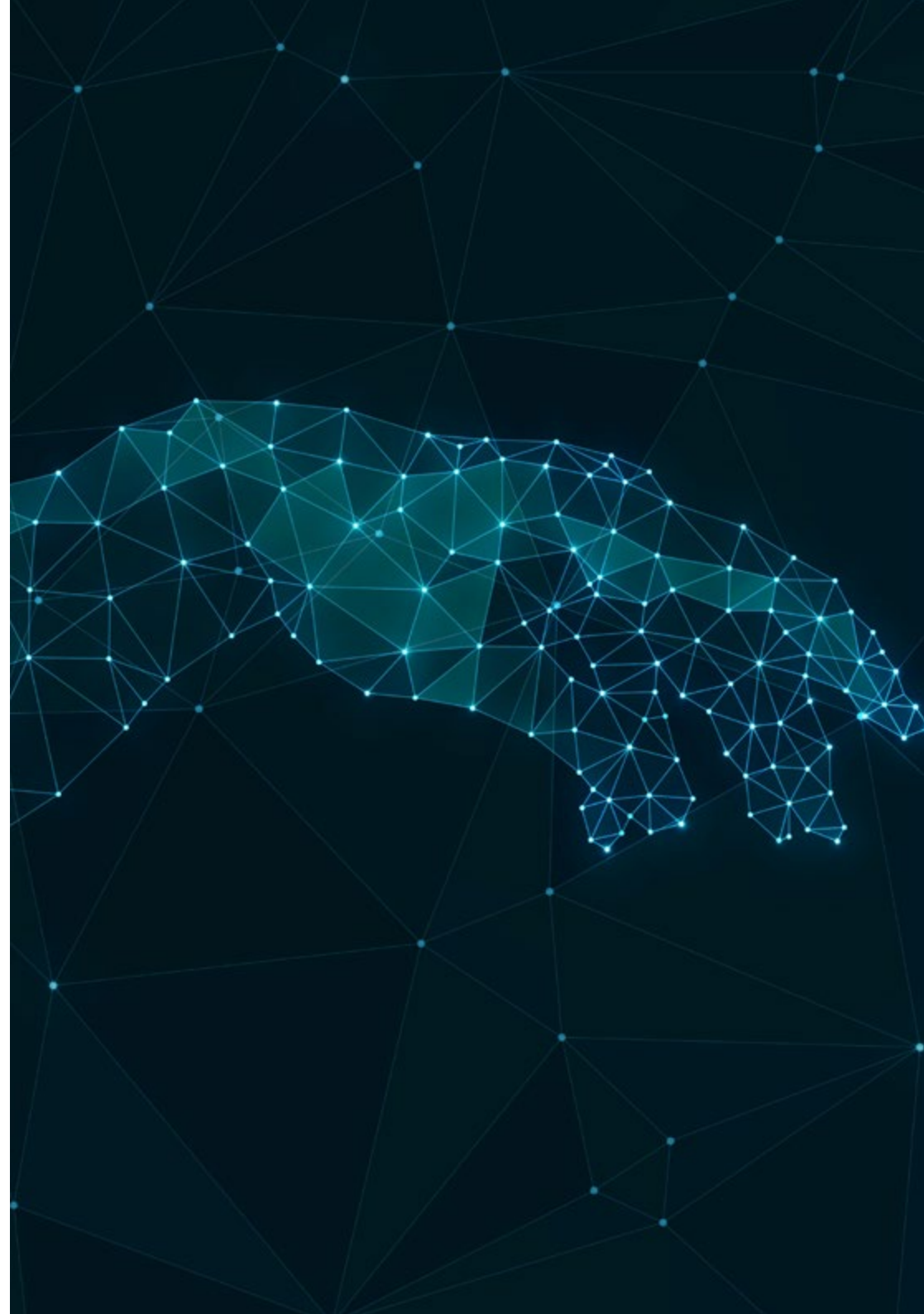
Structure and Content

This complete academic package will lead the student to the acquisition of the most comprehensive knowledge in this subject, bringing them closer to excellence in the humanistic field. The syllabus has been designed to meet the criteria of high academic impact of this Postgraduate Certificate, and incorporates new teaching approaches that aim to maintain motivation and interest, which are essential to achieving the learning objectives. A high-quality teaching model that differentiates TECH Technological University.



Module 1. Metaphysics III

- 1.1. Introduction
 - 1.1.1. The Philosophical Study of Absolute Being
 - 1.1.2. God, Humans and Being
 - 1.1.3. Natural and Supernatural Theology
- 1.2. God as a Problem
 - 1.2.1. The Rejection of God: Atheism and Its Forms; Sociological, Psychological and Philosophical Arguments; Discussion of Atheism
 - 1.2.2. The Witnesses of the Absolute: Basic Forms of the Affirmation of God; the Affirmation of God in Religions; the Question of God in the History of Philosophy
 - 1.2.3. The Philosophical Question of God: Conditions of Possibility of Knowing God; the Traces of the World that Point to God; in Search of the True God
- 1.3. On the Existence of God
 - 1.3.1. The Existence of God as a Problem: The Challenge of the Kantian Critique; Delimitation of the Problem; Possibility and Necessity for Demonstration; Metaphysical Nature of Philosophical Demonstration based on Causality; Typology of Philosophical Demonstration
 - 1.3.2. The Ontological Argument: History and Critical Evaluation
 - 1.3.3. The Five Thomistic Ways to Prove the Existence of God: Text and Critical Evaluation
 - 1.3.4. Anthropological Arguments: Intuitionism, Argument *Ex Veritate*, Argument *Ex Moralitate*, Arguments based on Human Spiritual Dynamism, Historical Argument, Argument from the Testimony of the Mystics
 - 1.3.5. General Assessment of the Philosophical Proofs of the Existence of God



- 1.4. On the Essence of God
 - 1.4.1. Human Knowledge of the Divine Nature: Ineffability of God; Analogy; Human Language about God
 - 1.4.2. Entitative and Personal Attributes of the Divine Being: Simplicity, Spirituality, Subsistent Fullness of Being and Aseity; God and the Transcendental Properties of Being; Negative Attributes: Infinity, Immensity, Eternity; Personal Attributes: Intelligence, Will, Freedom, Power, Personality
- 1.5. God and the World
 - 1.5.1. Insufficient Models in the Relation Approach: Pantheism and Deism
 - 1.5.2. Principles of God's Relationship with the Universe: Divine Immanence and Transcendence
 - 1.5.3. Divine Operational Attributes with respect to the World: Creation, Preservation, Contest
- 1.6. God and Humans
 - 1.6.1. God and Human Liberty
 - 1.6.2. God and History
 - 1.6.3. God and Evil
 - 1.6.4. God as the Supreme Good and the Ultimate Foundation of Values



A Postgraduate Certificate with a special focus on the conversion of knowledge into real competencies through practice"

04

Methodology

This academic program offers students a different way of learning. Our methodology uses a cyclical learning approach: **Relearning**.

This teaching system is used, for example, in the most prestigious medical schools in the world, and major publications such as the **New England Journal of Medicine** have considered it to be one of the most effective.



“

Discover Relearning, a system that abandons conventional linear learning, to take you through cyclical teaching systems: a way of learning that has proven to be extremely effective, especially in subjects that require memorization"

Case Study to contextualize all content

Our program offers a revolutionary approach to developing skills and knowledge. Our goal is to strengthen skills in a changing, competitive, and highly demanding environment.

“

At TECH, you will experience a learning methodology that is shaking the foundations of traditional universities around the world"



You will have access to a learning system based on repetition, with natural and progressive teaching throughout the entire syllabus.



The student will learn to solve complex situations in real business environments through collaborative activities and real cases.

A learning method that is different and innovative

This TECH program is an intensive educational program, created from scratch, which presents the most demanding challenges and decisions in this field, both nationally and internationally. This methodology promotes personal and professional growth, representing a significant step towards success. The case method, a technique that lays the foundation for this content, ensures that the most current economic, social and professional reality is taken into account.

“*Our program prepares you to face new challenges in uncertain environments and achieve success in your career”*

The case method has been the most widely used learning system among the world's leading Humanities schools for as long as they have existed. The case method was developed in 1912 so that law students would not only learn the law based on theoretical content. It consisted of presenting students with real-life, complex situations for them to make informed decisions and value judgments on how to resolve them. In 1924, Harvard adopted it as a standard teaching method.

What should a professional do in a given situation? This is the question we face in the case method, an action-oriented learning method. Throughout the program, the studies will be presented with multiple real cases. They will have to combine all their knowledge and research, and argue and defend their ideas and decisions.

Relearning Methodology

TECH effectively combines the Case Study methodology with a 100% online learning system based on repetition, which combines 8 different teaching elements in each lesson.

We enhance the Case Study with the best 100% online teaching method: Relearning.

In 2019, we obtained the best learning results of all online universities in the world.

At TECH you will learn using a cutting-edge methodology designed to train the executives of the future. This method, at the forefront of international teaching, is called Relearning.

Our university is the only one in the world authorized to employ this successful method. In 2019, we managed to improve our students' overall satisfaction levels (teaching quality, quality of materials, course structure, objectives...) based on the best online university indicators.



In our program, learning is not a linear process, but rather a spiral (learn, unlearn, forget, and re-learn). Therefore, we combine each of these elements concentrically. With this methodology we have trained more than 650,000 university graduates with unprecedented success in fields as diverse as biochemistry, genetics, surgery, international law, management skills, sports science, philosophy, law, engineering, journalism, history, markets, and financial instruments. All this in a highly demanding environment, where the students have a strong socio-economic profile and an average age of 43.5 years.

Relearning will allow you to learn with less effort and better performance, involving you more in your training, developing a critical mindset, defending arguments, and contrasting opinions: a direct equation for success.

From the latest scientific evidence in the field of neuroscience, not only do we know how to organize information, ideas, images and memories, but we know that the place and context where we have learned something is fundamental for us to be able to remember it and store it in the hippocampus, to retain it in our long-term memory.

In this way, and in what is called neurocognitive context-dependent e-learning, the different elements in our program are connected to the context where the individual carries out their professional activity.



This program offers the best educational material, prepared with professionals in mind:



Study Material

All teaching material is produced by the specialists who teach the course, specifically for the course, so that the teaching content is highly specific and precise.

These contents are then applied to the audiovisual format, to create the TECH online working method. All this, with the latest techniques that offer high quality pieces in each and every one of the materials that are made available to the student.



Classes

There is scientific evidence suggesting that observing third-party experts can be useful.

Learning from an Expert strengthens knowledge and memory, and generates confidence in future difficult decisions.



Practising Skills and Abilities

They will carry out activities to develop specific skills and abilities in each subject area. Exercises and activities to acquire and develop the skills and abilities that a specialist needs to develop in the context of the globalization that we are experiencing.



Additional Reading

Recent articles, consensus documents and international guidelines, among others. In TECH's virtual library, students will have access to everything they need to complete their course.





Case Studies

Students will complete a selection of the best case studies chosen specifically for this program. Cases that are presented, analyzed, and supervised by the best specialists in the world.



Interactive Summaries

The TECH team presents the contents attractively and dynamically in multimedia lessons that include audio, videos, images, diagrams, and concept maps in order to reinforce knowledge.

This exclusive educational system for presenting multimedia content was awarded by Microsoft as a "European Success Story".



Testing & Retesting

We periodically evaluate and re-evaluate students' knowledge throughout the program, through assessment and self-assessment activities and exercises, so that they can see how they are achieving their goals.



05

Certificate

The Postgraduate Certificate in Metaphysical Theology guarantees students, in addition to the most rigorous and up-to-date education, access to a Postgraduate Certificate issued by TECH Technological University.



“

Successfully complete this program and receive your university qualification without having to travel or fill out laborious paperwork”

This **Postgraduate Certificate in Metaphysical Theology** contains the most complete and up-to-date program on the market.

After the student has passed the assessments, they will receive their corresponding **Postgraduate Certificate** issued by **TECH Technological University** via tracked delivery*.

The certificate issued by **TECH Technological University** will reflect the qualification obtained in the Postgraduate Certificate, and meets the requirements commonly demanded by labor exchanges, competitive examinations and professional career evaluation committees.

Title: **Postgraduate Certificate in Metaphysical Theology**

Official N° of hours: **125 h.**



*Apostille Convention. In the event that the student wishes to have their paper certificate issued with an apostille, TECH EDUCATION will make the necessary arrangements to obtain it, at an additional cost.

future
health confidence people
education information tutors
guarantee accreditation teaching
institutions technology learning
community commitment
personalized service innovation
knowledge present
development language
classroom



Postgraduate Certificate Metaphysical Theology

- » Modality: **online**
- » Duration: **6 weeks**
- » Certificate: **TECH Technological University**
- » Schedule: **at your own pace**
- » Exams: **online**

Postgraduate Certificate Metaphysical Theology