

# Postgraduate Certificate Landscaping Projects





## Postgraduate Certificate Landscaping Projects

- » Modality: online
- » Duration: 6 weeks
- » Certificate: TECH Technological University
- » Dedication: 16h/week
- » Schedule: at your own pace
- » Exams: online

Website: [www.techtitute.com/pk/engineering/postgraduate-certificate/landscaping-projects](http://www.techtitute.com/pk/engineering/postgraduate-certificate/landscaping-projects)

# Index

01

Introduction

---

*p. 4*

02

Objectives

---

*p. 8*

03

Course Management

---

*p. 12*

04

Structure and Content

---

*p. 16*

05

Methodology

---

*p. 20*

06

Certificate

---

*p. 28*

# 01

# Introduction

Thinking and designing an architectural work requires specific parameters in terms of environmental aspects, even if this is not the purpose. But when talking about landscaping projects, it is an area that has been revolutionizing the architectural sector over the years. In this sense, you will find a vision guided to man's benefit, space and nature. Accordingly, this field of study has been given great relevance worldwide, which is why this important program has been created, to offer the professional exclusive and advanced material on the different strategies for integrating natural elements in landscape design. For this, the student will have the convenience and flexibility of the 100% online pedagogical format.





“

*In this program you will find a guided vision of sustainability and natural preservation from Landscape Architecture"*

For the execution of a landscaping project, nowadays the architect will be able to achieve environmental objectives such as the conservation of ecological processes and the improvement of the micro-climate. This is done through the application of techniques of low economic, environmental and social impact such as the increase of biodiversity, the use of recycled water and the use of nearby resources. Professionals in this sector have been implementing a series of techniques and methods so that the place in which they work is connected with nearby spaces to be worked and, therefore, amplify their environmental improvement effects.

In this way, research in this field has evolved over the years providing an improvement in the spaces which human beings inhabit, making it clear that professionals in Architecture must be up to date in this area of knowledge. For this reason, this program will provide the expert with the most current tools on Landscaping Projects and will deepen in the concepts and advanced principles of design applied to Landscape.

Students will strengthen their knowledge in specific areas related to the differentiation and management in the construction and execution processes in Landscape Architecture projects. A program that integrates a qualified teaching staff with great experience in the sector, supported by audiovisual content that offers the highest quality, which are dynamic methods that enhance the academic experience, with the convenience of the online mode.

In this sense, TECH Technological University guarantees excellence and comfort, since this program offers the most complete update and the best standards, therefore being a program of great flexibility as it only requires an electronic device with an Internet connection, easily accessing the virtual platform from the comfort of your home or wherever you are.

This **Postgraduate Certificate in Landscaping Projects** contains the most complete and up-to-date program on the market. The most important features include:

- ◆ The development of practical cases presented by experts in Engineering focused on Landscape Architecture
- ◆ The graphic, schematic and practical contents with which it is conceived combine scientific and practical information on those disciplines that are essential for professional practice
- ◆ Practical exercises where the self-assessment process can be carried out to improve learning
- ◆ Its special emphasis on innovative methodologies
- ◆ Theoretical lessons, questions to the expert, debate forums on controversial topics, and individual reflection assignments
- ◆ The availability of access to the contents from any fixed or portable device with Internet connection



*At TECH Technological University, you will implement innovative techniques for environmental improvement in the construction and modification of spaces"*

“

*Environmental protection is one of the main challenges in the field of Architecture. Therefore, you will acquire skills that will propel your career to change”*

The program includes in its teaching staff professionals of the field who pour into this training the experience of their work, in addition to recognized specialists from reference societies and prestigious universities.

Its multimedia content, developed with the latest educational technology, will allow the professional a situated and contextual learning, that is, a simulated environment that will provide an immersive training programmed to train in real situations.

The design of this program focuses on Problem-Based Learning, in which the professional will have to try to solve the different professional practice situations that will arise throughout the academic course. This will be done with the help of an innovative system of interactive videos made by renowned experts.

*Graduates will expand their knowledge in the planning and execution of design projects in Landscape Architecture.*

*With the support of didactic tools and advanced content provided by TECH Technological University, you will reach the top in Landscape Architecture Projects.*



# 02

# Objectives

This academic program has been specifically designed to provide the graduate with the most recent developments in the field of Landscape Architecture. That is why TECH Technological University provides different tools of academic innovation, guaranteeing the success of the program. Upon completion of this Postgraduate Certificate, students will have broadened their skills in the analysis and evaluation of the viability and sustainability of proposed designs in economic, social and environmental terms.







“

*TECH Technological University guarantees you the best academic resources, assuring your success in the completion of this Postgraduate Certificate in Landscaping Projects"*



## General Objectives

---

- ◆ Delve into the concepts and advanced principles of design applied to the landscape
- ◆ Develop visual representation and graphic communication skills in the field of Landscape Architecture
- ◆ Delve into the planning and execution of design projects in Landscape Architecture
- ◆ Approach different strategies for ecological conservation and restoration
- ◆ Differentiate and manage the processes of construction and execution of Landscape Architecture projects
- ◆ Integrate Landscape management strategies and practices to preserve the health and beauty of natural and built environments





## Specific Objectives

---

- ◆ Discern the stages and processes involved in the development of a design project in Landscape Architecture
- ◆ Deepen in design methodologies, such as research, concept generation and planning
- ◆ Delve into different strategies for integrating natural and built elements in landscape design
- ◆ Analyze and evaluate the feasibility and sustainability of proposed designs in economic, social and environmental terms

“

*In this program you will develop skills in graphic communication in the field of Landscape Architecture”*

03

# Course Management

TECH Technological University provides students with a first class education thanks to the didactic material that helps the academic process to have the expected results, successfully achieving the development of the program. In this way, the graduate will have access to advanced content created by a faculty specialized in Landscape Design and Management, Graphic Design and Architecture. Its solid experience and foundations in this area of knowledge will allow the graduate to respond to questions that arise during the course of the program.



“

*With TECH Technological University you will reach the top by working with a team of professionals who will provide you with a solid knowledge in the field of Architecture”*

## Management



### Mr. Librero López, Ricardo

- ◆ CEO and founder of GreenerLand
- ◆ Technical Director of the Atlantic Botanical Garden of Gijón
- ◆ Coordinator of Landscaping Projects at the Universal Exposition of Seville in 1992
- ◆ Postgraduate Certificate in Management and Landscape Design by the Complutense University of Madrid
- ◆ Member of the Spanish Association of Landscape Architects

## Professors

### Mr. Camargo Casali, Daniel

- ◆ CEO and founder of D + D Solutions
- ◆ Architect in the development team of the Master Plan of Contents of the EXPO ANTALYA
- ◆ Designer and collaborator of ABBSOLUTE GROUP
- ◆ Architect Designer of Martyr's Memorial Project in Amman, Jordan
- ◆ Architect in the elaboration of the Master Plan for the Universal Exposition of Seville in 1992
- ◆ Graduate in Architecture from the University of Buenos Aires



# 04

# Structure and Content

This Postgraduate Certificate has been designed and oriented according to the latest studies and research in the architectural field, created to provide an exclusive material regarding functional concepts in the layout and implementation of projects such as reduction and increase of breezes, insecurity reduction, minimizing water consumption, among others. All this, through the various audiovisual tools that provide the dynamism and great attractiveness for the development of this university program.





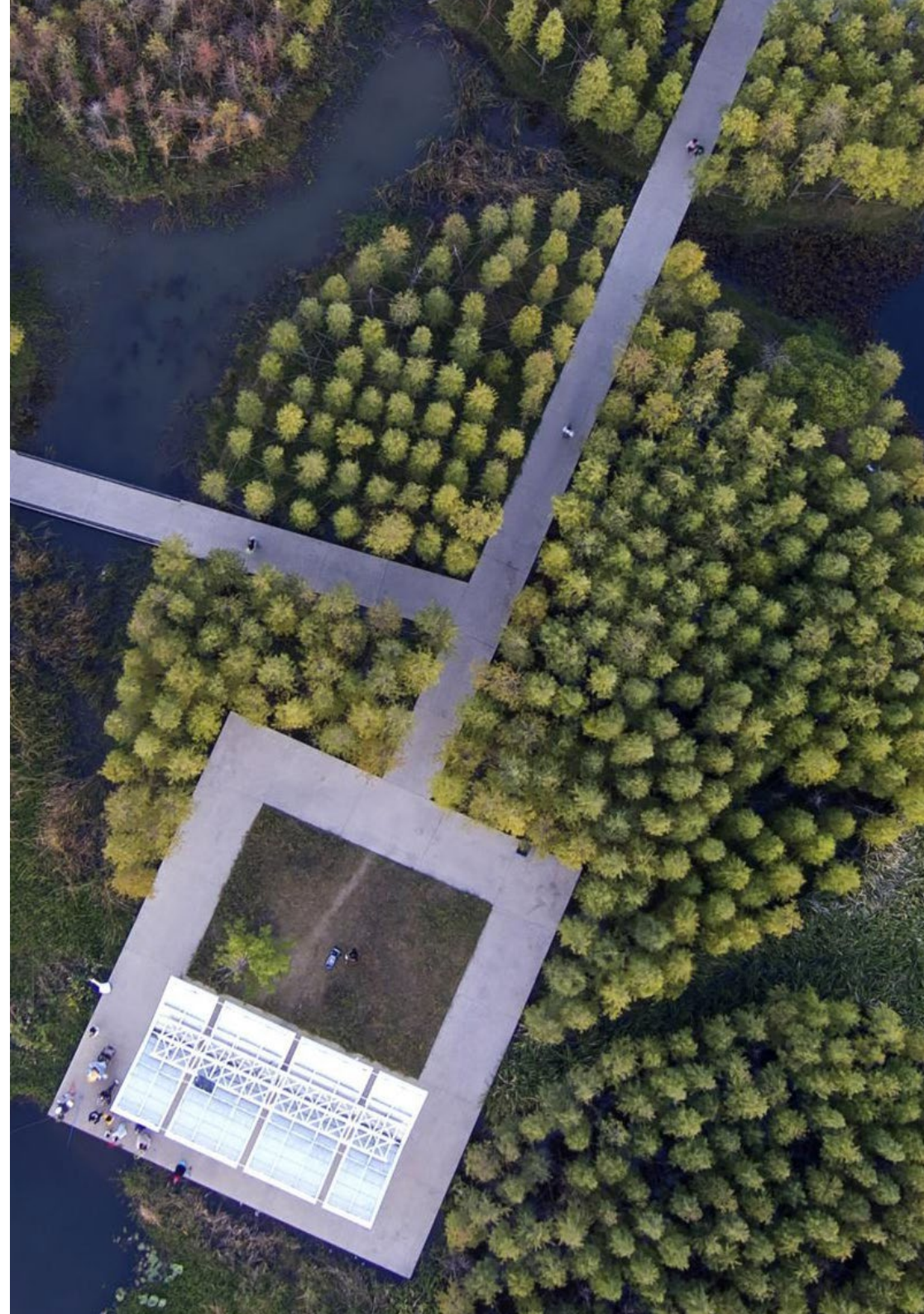


“

*A syllabus of the highest level designed  
by a faculty specialized in Architecture  
and Graphic Design”*

## Módulo 1. The Landscaping project. Drafting the Project

- 1.1. The Landscape Program
  - 1.1.1. Type of Clients: Public, Institutional, Private
  - 1.1.2. Client Needs: Make a List of Desires or Needs
  - 1.1.3. Landscape Program
  - 1.1.4. Estimated Economic Volume
- 1.2. Site Inventory
  - 1.2.1. Topography
  - 1.2.2. Infrastructure Connection (Type and characteristics)
  - 1.2.3. Existing Trees and Elements
  - 1.2.4. Location, Climate and Orientation
  - 1.2.5. Soil Analysis
  - 1.2.6. Geological Study, if Construction is Required
  - 1.2.7. Water Analysis if not Potable
  - 1.2.8. Analysis of Surrounding Vegetation
  - 1.2.9. Study of the Site in Relation to the Edges
  - 1.2.10. Local, Regional or National Legislation Affecting the Site
  - 1.2.11. Elaboration of the Current State Plan
- 1.3. Site Analysis
  - 1.3.1. Combining the Program with the Survey Data to Establish the Basis of the Design
  - 1.3.2. Analysis Plan: Vitas, Orientation, Shadows, Soils
  - 1.3.3. Focal Points
  - 1.3.4. List of Existing or Missing Infrastructure
  - 1.3.5. Preliminary Zoning
  - 1.3.6. Elements to be Removed
  - 1.3.7. Elements to be Preserved
- 1.4. Conceptualization
  - 1.4.1. General Philosophical Concepts
    - 1.4.1.1. Serious-Frivolous
    - 1.4.1.2. Active-Passive
    - 1.4.1.3. Introspective-Extroverted
    - 1.4.1.4. Interactive-Solidary
    - 1.4.1.5. Surprising-Obvious



- 1.4.2. Functional Concepts
  - 1.4.2.1. Reducing Erosion
  - 1.4.2.2. Increasing Drainage
  - 1.4.2.3. Prevent Vandalism
  - 1.4.2.4. Reduce Maintenance
  - 1.4.2.5. Minimize Water Consumption
  - 1.4.2.6. Reduce Solar Incidence
  - 1.4.2.7. Reduce or Increase Breezes
- 1.4.3. Choice of Style
  - 1.4.3.1. Classic
  - 1.4.3.2. Modern
  - 1.4.3.3. Minimalist
  - 1.4.3.4. Naturalized
- 1.5. Types of Landscaping Projects. Urban Landscape
  - 1.5.1. Single-family Gardens
  - 1.5.2. Urban Developments
  - 1.5.3. Garden Cities
  - 1.5.4. Urban Green Spaces. Streets, Squares, Gardens
  - 1.5.5. Parks, Metropolitan Parks, Periurban Parks, Naturalized Spaces
  - 1.5.6. Urban and School Gardens
  - 1.5.7. Gardens for People with Special Needs
- 1.6. Types of Landscaping Projects. Rural Landscape / Natural Landscape
  - 1.6.1. Natural Parks and Deterrent Parks
  - 1.6.2. Coastal Landscapes. Natural Spaces, Protection of Dunes Ports and Promenades
  - 1.6.3. Restoration of Degraded Areas. Mines, Sealing of Waste Dumps
  - 1.6.4. Design of River Banks
  - 1.6.5. Design of Linear Infrastructure (Highways, Railroad Lines, Greenways)
  - 1.6.6. Recovery of Desertified Areas
- 1.7. Types of Landscaping Projects. Special Projects
  - 1.7.1. Cultural and Heritage Landscapes. ICONS
  - 1.7.2. Restoration of Historic Gardens
  - 1.7.3. Botanical Garden Design
  - 1.7.4. Design of Theme Parks and Exhibitions
- 1.8. Graphic Representation Shots
  - 1.8.1. Preparation of Drawings According to the Type of Customer and Contract
  - 1.8.2. Drawing Formats
  - 1.8.3. Initial Sketches. Sketches
  - 1.8.4. General Drawings. Zoning General Floor Plan. Content According to the Type of Customer
  - 1.8.5. Infrastructure Plans. (Drainage, Water System, Lighting)
  - 1.8.6. Civil Works Plans
  - 1.8.7. Plantation Plans
  - 1.8.8. Furniture Plans
  - 1.8.9. Detail Drawings
  - 1.8.10. Perspectives and/or Renderings, Normally Contracted Separately
- 1.9. Technical Documentation
  - 1.9.1. Depending on the Scope of the Assignment and the Type of Client
  - 1.9.2. Differences Between Preliminary Design, Basic Design and Execution Design
  - 1.9.3. Memory List of Materials
  - 1.9.4. General Technical Specifications
  - 1.9.5. Specific Technical Specifications
  - 1.9.6. Administrative Specifications (Usually Provided by the Contracting Administration)
  - 1.9.7. Measurements and Budgets
- 1.10. Programs of Measurements and Budgets
  - 1.10.1. Price Databases
  - 1.10.2. Concept of Unit Prices, Composite Prices and Decomposed Prices
  - 1.10.3. Specific Measurement and Budgeting Software
  - 1.10.4. Menfis Example

05

# Methodology

This academic program offers students a different way of learning. Our methodology uses a cyclical learning approach: **Relearning**.

This teaching system is used, for example, in the most prestigious medical schools in the world, and major publications such as the **New England Journal of Medicine** have considered it to be one of the most effective.





“

*Discover Relearning, a system that abandons conventional linear learning, to take you through cyclical teaching systems: a way of learning that has proven to be extremely effective, especially in subjects that require memorization"*

## Case Study to contextualize all content

Our program offers a revolutionary approach to developing skills and knowledge. Our goal is to strengthen skills in a changing, competitive, and highly demanding environment.

“

*At TECH, you will experience a learning methodology that is shaking the foundations of traditional universities around the world”*



*You will have access to a learning system based on repetition, with natural and progressive teaching throughout the entire syllabus.*



*The student will learn to solve complex situations in real business environments through collaborative activities and real cases.*

### A learning method that is different and innovative

This TECH program is an intensive educational program, created from scratch, which presents the most demanding challenges and decisions in this field, both nationally and internationally. This methodology promotes personal and professional growth, representing a significant step towards success. The case method, a technique that lays the foundation for this content, ensures that the most current economic, social and professional reality is taken into account.

“*Our program prepares you to face new challenges in uncertain environments and achieve success in your career”*

The case method is the most widely used learning system in the best faculties in the world. The case method was developed in 1912 so that law students would not only learn the law based on theoretical content. It consisted of presenting students with real-life, complex situations for them to make informed decisions and value judgments on how to resolve them. In 1924, Harvard adopted it as a standard teaching method.

What should a professional do in a given situation? This is the question that you are presented with in the case method, an action-oriented learning method. Throughout the program, the studies will be presented with multiple real cases. They will have to combine all their knowledge and research, and argue and defend their ideas and decisions.

## Relearning Methodology

TECH effectively combines the Case Study methodology with a 100% online learning system based on repetition, which combines 8 different teaching elements in each lesson.

We enhance the Case Study with the best 100% online teaching method: Relearning.

*In 2019, we obtained the best learning results of all online universities in the world.*

At TECH, you will learn using a cutting-edge methodology designed to train the executives of the future. This method, at the forefront of international teaching, is called Relearning.

Our university is the only one in the world authorized to employ this successful method. In 2019, we managed to improve our students' overall satisfaction levels (teaching quality, quality of materials, course structure, objectives...) based on the best online university indicators.





In our program, learning is not a linear process, but rather a spiral (learn, unlearn, forget, and re-learn). Therefore, we combine each of these elements concentrically.

This methodology has trained more than 650,000 university graduates with unprecedented success in fields as diverse as biochemistry, genetics, surgery, international law, management skills, sports science, philosophy, law, engineering, journalism, history, and financial markets and instruments. All this in a highly demanding environment, where the students have a strong socio-economic profile and an average age of 43.5 years.

*Relearning will allow you to learn with less effort and better performance, involving you more in your training, developing a critical mindset, defending arguments, and contrasting opinions: a direct equation for success.*

From the latest scientific evidence in the field of neuroscience, not only do we know how to organize information, ideas, images and memories, but we know that the place and context where we have learned something is fundamental for us to be able to remember it and store it in the hippocampus, to retain it in our long-term memory.

In this way, and in what is called neurocognitive context-dependent e-learning, the different elements in our program are connected to the context where the individual carries out their professional activity.



This program offers the best educational material, prepared with professionals in mind:



### Study Material

All teaching material is produced by the specialists who teach the course, specifically for the course, so that the teaching content is highly specific and precise.

These contents are then applied to the audiovisual format, to create the TECH online working method. All this, with the latest techniques that offer high quality pieces in each and every one of the materials that are made available to the student.



### Classes

There is scientific evidence suggesting that observing third-party experts can be useful.

Learning from an Expert strengthens knowledge and memory, and generates confidence in future difficult decisions.



### Practising Skills and Abilities

They will carry out activities to develop specific skills and abilities in each subject area. Exercises and activities to acquire and develop the skills and abilities that a specialist needs to develop in the context of the globalization that we are experiencing.



### Additional Reading

Recent articles, consensus documents and international guidelines, among others. In TECH's virtual library, students will have access to everything they need to complete their course.





**Case Studies**

Students will complete a selection of the best case studies chosen specifically for this program. Cases that are presented, analyzed, and supervised by the best specialists in the world.



**Interactive Summaries**

The TECH team presents the contents attractively and dynamically in multimedia lessons that include audio, videos, images, diagrams, and concept maps in order to reinforce knowledge.

This exclusive educational system for presenting multimedia content was awarded by Microsoft as a "European Success Story".



**Testing & Retesting**

We periodically evaluate and re-evaluate students' knowledge throughout the program, through assessment and self-assessment activities and exercises, so that they can see how they are achieving their goals.



06

# Certificate

The Postgraduate Certificate in Landscaping Projects guarantees students, in addition to the most rigorous and up-to-date education, access to a Postgraduate Certificate issued by TECH Technological University.



“

*Successfully complete this program and receive your university qualification without having to travel or fill out laborious paperwork”*

This **Postgraduate Certificate in Landscaping Projects** contains the most complete and up-to-date program on the market.

After the student has passed the assessments, they will receive their corresponding **Postgraduate Certificate** issued by **TECH Technological University** via tracked delivery\*.

The certificate issued by **TECH Technological University** will reflect the qualification obtained in the Postgraduate Certificate, and meets the requirements commonly demanded by labor exchanges, competitive examinations, and professional career evaluation committees.

Title: **Postgraduate Certificate in Landscaping Projects**

Official N° of Hours: **150 h.**



\*Apostille Convention. In the event that the student wishes to have their paper certificate issued with an apostille, TECH EDUCATION will make the necessary arrangements to obtain it, at an additional cost.

future  
health confidence people  
education information tutors  
guarantee accreditation teaching  
institutions technology learning  
community commitment  
personalized service innovation  
knowledge present  
development language  
virtual classroom



## Postgraduate Certificate Landscaping Projects

- › Modality: online
- › Duration: 6 weeks
- › Certificate: TECH Technological University
- › Dedication: 16h/week
- › Schedule: at your own pace
- › Exams: online

# Postgraduate Certificate Landscaping Projects